

Serveur Académique Lausannois SERVAL serval.unil.ch

Author Manuscript

Faculty of Biology and Medicine Publication

This paper has been peer-reviewed but does not include the final publisher proof-corrections or journal pagination.

Published in final edited form as:

Title: Defining the role of common variation in the genomic and biological architecture of adult human height.

Authors: Wood AR et al.

Nat Genet. 2014 Nov;46(11):1173-86. doi: 10.1038/ng.3097.

In the absence of a copyright statement, users should assume that standard copyright protection applies, unless the article contains an explicit statement to the contrary. In case of doubt, contact the journal publisher to verify the copyright status of an article.



HHS Public Access

Author manuscript

Nat Genet. Author manuscript; available in PMC 2015 May 01.

Published in final edited form as:

Nat Genet. 2014 November ; 46(11): 1173–1186. doi:10.1038/ng.3097.

Defining the role of common variation in the genomic and biological architecture of adult human height

A full list of authors and affiliations appears at the end of the article.

Abstract

Using genome-wide data from 253,288 individuals, we identified 697 variants at genome-wide significance that together explain one-fifth of heritability for adult height. By testing different numbers of variants in independent studies, we show that the most strongly associated ~2,000, ~3,700 and ~9,500 SNPs explained ~21%, ~24% and ~29% of phenotypic variance. Furthermore, all common variants together captured the majority (60%) of heritability. The 697 variants clustered in 423 loci enriched for genes, pathways, and tissue-types known to be involved in growth and together implicated genes and pathways not highlighted in earlier efforts, such as signaling by fibroblast growth factors, WNT/beta-catenin, and chondroitin sulfate-related genes. We identified several genes and pathways not previously connected with human skeletal growth, including mTOR, osteoglycin and binding of hyaluronic acid. Our results indicate a genetic architecture for human height that is characterized by a very large but finite number (thousands) of causal variants.

Height is a classical polygenic trait that has provided general insights into the genetic architecture of common human traits and diseases, and into the prospects and challenges of different methods used to identify genetic risk factors. Studies consistently estimate that the additive genetic contribution to normal variation in adult height (“narrow sense heritability”) is approximately 80%^{1–3}. Previous analysis of genome-wide association studies (GWAS) of adult height showed that common variants together account for 50% of this heritable contribution to height variation^{4,5}. The most recent GWAS of adult height identified 180 loci, which together highlighted many genes relevant to human skeletal growth that had not been implicated in previous studies⁶. Common variants in these loci, however, only accounted for 10% of the phenotypic variation (~12% of heritability). Here, we report results from a GWAS meta-analysis of adult height in 253,288 individuals of European ancestry. We show that additive contributions of fewer than 10,000 SNPs (at $P < 5 \times 10^{-3}$) can account for 36% of the heritability of adult height. Variants reaching genome-wide significance ($P < 5 \times 10^{-8}$) in this larger study (697 SNPs) clustered in loci, were substantially enriched for regulatory variants, and implicated multiple known and previously unknown genes and pathways relevant to growth. More broadly, our results provide evidence that increasing GWAS sample sizes to the order of 100,000s, now plausible for many common

Users may view, print, copy, and download text and data-mine the content in such documents, for the purposes of academic research, subject always to the full Conditions of use: http://www.nature.com/authors/editorial_policies/license.html#terms

Correspondence to: Peter M Visscher; Joel N Hirschhorn; Timothy M Frayling.

*These authors contributed equally

†These authors jointly directed the work

traits, will likely continue to identify the variants and loci that close the “missing heritability” gap, whilst improving knowledge of the biology of those traits.

Results

The overall analysis strategy is illustrated in Supplementary Figure 1. We first performed a GWAS meta-analysis of adult height using summary statistics from 79 studies consisting of 253,288 individuals of European ancestry (Online Methods). We identified 697 SNPs that reached genome-wide significance ($P < 5 \times 10^{-8}$) using an approximate conditional and joint multiple-SNP (COJO) analysis⁷ in GCTA⁸ (Online Methods) which takes linkage disequilibrium (LD) between SNPs into account (Supplementary Table 1; Supplementary Figs. 2–3). The 697 SNPs clustered in 423 loci, with a locus defined as one or multiple jointly associated SNPs located within ± 1 Mb of each other. Most of these 697 SNPs are uncorrelated although those in close physical proximity (e.g. < 1 Mb) may be in partial LD (see Supplementary Table 1 for LD between adjacent pairs of the 697 SNPs). The clustering of signals was non-random (empirical enrichment of 1.4 fold, $P < 1 \times 10^{-4}$) with 90, 26 and 31 loci containing 2, 3 and 4 signals respectively, (Supplementary Note and Supplementary Tables 1 and 2). We observed strong evidence of clustering of association signals within loci across a range of locus sizes, from 100kb to 1.25Mb, but the clustering was almost entirely driven by variants within 250kb of index SNPs (Supplementary Note and Supplementary Table 2). As shown in Figure 1 and Supplementary Figure 4, in some loci, multiple signals cluster tightly around a single gene, whereas in other cases, the clustering of associated variants is likely due to multiple different height-related genes being in close proximity.

Of the 697 SNPs, 403 were represented on the MetaboChip array⁹. Using data from 80,067 individuals genotyped on the MetaboChip array from 37 independent studies, we observed very strong evidence of concordance of effect sizes between the MetaboChip and GWAS samples ($P = 1.9 \times 10^{-160}$); and $>99\%$ of variants were directionally consistent between MetaboChip and GWAS (Online Methods, Supplementary Note, and Supplementary Table 3).

We observed a large genome-wide ‘inflation’ factor of the test statistic for association even after we corrected each study’s test statistics by its individual inflation factor (single $\lambda_{GC} = 1.94$). At least two phenomena could have contributed to this observation. First, as described previously¹⁰, highly polygenic models of inheritance are expected to increase the genomic inflation factor to levels comparable to what we observe. Second, height is particularly susceptible to confounding by population ancestry (stratification), which can also lead to inflation of the test statistics. We addressed these possibilities by comparing our results with those obtained using more stringent corrections for stratification (linear mixed models), and with results obtained in subsets of studies in which a purely family-based analysis was feasible, and by performing a within-family prediction analysis which partitioned the variance in the genetic predictor into the contributions of true associations and population stratification.

Our linear mixed model (LMM) analyses, performed in a subset of 15 individual studies comprising 59,380 individuals, provided strong evidence that the inflated statistics were

driven predominantly by the highly polygenic nature of the trait. This approach utilizes a genomic relationship matrix (GRM) calculated through genome-wide SNP data to correct for distant relatedness between all pairs of individuals within a study. This resulted in a single λ_{GC} of 1.20. This value was entirely consistent with the single λ_{GC} of 1.20 obtained from the standard GWAS analysis of the same individuals and a single λ_{GC} of 1.94 obtained from the full 253,288 individuals (Supplementary Table 4). Because this approach may be overly conservative for a strongly genetic and highly polygenic trait, each study additionally repeated the analyses for each chromosome using a GRM generated from the remaining 21 chromosomes, or in the case of the largest study (WGHS) repeating the analysis for all odd numbered chromosomes using a GRM generated from the even numbered chromosomes and vice versa. The single λ_{GC} inflation factor for this analysis, 1.23, was also entirely consistent with the standard GWAS results (Online Methods, Supplementary Note, and Supplementary Table 4).

Our family based analyses also provided strong evidence that the inflated statistics are driven predominantly by the highly polygenic nature of height. We assessed whether variants that reached genome-wide significance after single GC correction replicated in family-based analyses of up to 25,849 samples (effective sample size 14,963, using methods that are immune to stratification (Online Methods, Supplementary Note, and Supplementary Tables 5 and 6). We identified genome-wide significant associations from a meta-analysis that excluded the family-based samples, and tested these associations for replication in the family-based samples; a lower rate of replication than expected could be due to inflation of effect sizes in the discovery sample from the “winner’s curse” and/or stratification. Of 416 genome-wide significant SNPs representing multiple signals selected after exclusion of family-based studies, 371 SNPs had a consistent direction of effect (compared with 208 expected by chance, and 400 expected in the absence of any inflation of estimated effect sizes), and 142 replicated with $P < 0.05$ (compared with 21 expected by chance, and 210 expected in the absence of effect size inflation; Supplementary Table 5). These analyses (particularly the directional consistency) shows that most of the loci represent true associations, but also shows that there is a modest inflation in the effect size estimates, due to stratification and/or the winner’s curse. To distinguish between these possibilities, we repeated this analysis, substituting for the family-based samples a random set of studies with similar total effective sample size. The number of replicating loci was only slightly lower in the family-based cohorts than in the random samples (Supplementary Table 5, 12–17 fewer replications attributable to stratification at different P -value thresholds). This indicates that most of the modest inflation in effect estimates is due to the winner’s curse, that a small amount of inflation is due to residual stratification, and that few (upper limit ~15–25; Supplementary Note and Supplementary Table 5) if any of the loci that reach genome-wide significance after single GC correction are likely to be complete false positives due to stratification (that is, no real association whatsoever with height).

Variance explained by SNPs at different significance levels

Having established that single GC correction is sufficient to identify SNPs that are likely to be truly associated with height, we next performed a series of analyses using GWAS data from five independent validation studies to quantify the fraction of phenotypic variance

explained by SNPs selected from the GCTA-COJO analyses⁷ of the meta-analysis data, which excluded data from the validation studies, at a range of statistical thresholds, and to quantify the accuracy of predicting height using these selected SNPs (Online Methods). We first developed a new method that uses within-family prediction to partition the variance of the SNP-based predictor into components due to real SNP effects, errors in estimating SNP effects, and population stratification (Online Methods), and applied the method to data on full-sib pairs from three of the five validation studies (Online Methods). Consistently across the three studies, all the partitioned variance components increased as a less stringent significance level was used for SNP selection in the discovery sample and the error variance increased more dramatically than the genetic variance when more SNPs selected at a less significance level were included in the predictor (Fig. 2a–c). We demonstrated the partitioning of variance due to population stratification by the within-family prediction analyses with and without adjusting for principal components (PCs) (Supplementary Fig. 5). The results again confirmed that the impact of population stratification on the top associated SNPs was minor and demonstrated that the variation in the predictor due to true SNP effect, estimation error and population stratification was quantifiable. We next inferred, using these partitioned variance components from the within-family prediction analysis, how well different selected sets of SNPs would predict height in independent samples. We showed that the observed prediction accuracy (squared correlation between phenotype and predictor, R^2) in five different population-based cohorts was highly consistent with the values inferred from the within-family based analyses, with prediction accuracy peaking at ~17% using the ~1,900 SNPs reaching $P < 5 \times 10^{-5}$ (Fig. 2d). Finally we estimated variance explained by the selected SNPs in population-based studies using the GCTA-GREML method^{4,8} (Fig. 2e). The results showed that ~670 SNPs at $P < 5 \times 10^{-8}$ and ~9,500 SNPs at $P < 5 \times 10^{-3}$ captured ~16% and ~29% of phenotypic variance respectively (Table 1), which was also consistent with the estimates inferred from the within-family prediction analysis. As shown in equation [19], prediction R^2 is not equal to the variance explained but a function of the variance of true SNP effects and the error variance in estimating SNP effects, in the absence of population structure. This is demonstrated in Figure 2, where at thresholds below genome-wide significance, variance explained is higher than the prediction accuracy, because the latter is deflated both by imprecise estimates of effect sizes (estimation errors) and by inclusion of SNPs that are not associated with height. The estimate of variance explained by all the HapMap3 (ref. 11) SNPs without SNP selection was ~50% (Table 1), consistent with previous estimates^{4,5}. Thus, a group of ~9,500 SNPs (representing <1% of common SNPs) selected at $P < 5 \times 10^{-3}$, explained ~29% of phenotypic variance. Since ~50% of phenotypic variance is explained by all common SNPs, the selected set of SNPs, despite being limited to <1% of common SNPs, accounts for the majority of variance attributable to all common SNPs (29/50 ~ 60%). This set of ~9,500 SNPs strongly clustered with the newly established height loci: 1,704 (19%) variants were located within 250kb of one of the 697 genome-wide associated SNPs, suggesting that a substantial fraction of “missing heritability” is within already identified loci. This clustering of additional variants within identified loci was confirmed in a parallel analysis based on two left-out studies where we observed that SNPs in closer physical proximity with the top associated SNPs explained disproportionately more variance (Online Methods and Supplementary Fig. 6).

Larger GWAS identifies new biologically relevant genes and pathways

Having shown that ~1% of variants can account for the majority of heritability attributable to common variation, we next considered whether the expanded set of height-associated variants could be used to identify the genomic features and biological pathways of most relevance to normal variation in adult height. To test whether our GWAS could implicate new biology, we used established and novel approaches to test whether the height-associated loci were enriched for functionally relevant variants, genes, pathways, and tissues.

As with the 180 variants identified in our previous analysis, the 697 variants were non-randomly distributed with respect to functional and putatively functional regions of the genome (Online Methods). We observed that height associated variants were enriched for non-synonymous SNPs (nsSNPs) (empirical enrichment of 1.2 fold, $P=0.02$), cis-regulatory effects in blood (empirical enrichment of 1.5 fold, $P=0.03$), a curated list of genes that underlie monogenic syndromes of abnormal skeletal growth¹² (empirical enrichment 1.4 fold, $P=0.013$), associations with apparently unrelated complex traits in the NHGRI GWAS catalog (empirical enrichment 2.6 fold, $P<1\times 10^{-4}$) and functional chromatin annotations in multiple tissues and cell types (empirical enrichment 1.8 fold, $P<1\times 10^{-3}$) (Supplementary Note and Supplementary Tables 7–11).

The greater resolution of height associated variants provided by increased sample size, combined with improved gene prioritization and gene set enrichment approaches, identified multiple new tissues, gene sets and specific genes that are highly likely to be involved in the biology of skeletal growth. Specifically, using a variety of established and novel pathway methods, we identified ~3 times as many enriched pathways and prioritized ~5 times as many genes (including genes newly prioritized in previously identified loci) compared to results derived from identical pathway methods to the previous GWAS of 133,000 individuals (Table 2).

We first focused on existing pathway and gene prioritization methods: (1) MAGENTA¹³, a method designed to identify gene sets enriched in GWAS data, and (2) GRAIL¹⁴, which uses published literature to highlight connections between likely relevant genes within GWAS loci. As expected, the GRAIL and MAGENTA analyses confirmed several previously identified gene sets and pathways clearly relevant to skeletal growth, but in the larger sample they also provided evidence for additional known and novel genes, gene sets and protein complexes not identified in our previous smaller study (for example, FGF signaling, WNT signaling, osteoglycin, and other genes related to bone or cartilage development) (Supplementary Tables 12–13 and Supplementary Fig. 7).

To obtain more detailed insight into height biology, we applied DEPICT, a novel data-driven integrative method that uses gene sets reconstituted based on large scale expression data to prioritize genes and gene sets, and also to identify tissues enriched in highly expressed genes from associated loci (Pers *et al. in preparation*; Online Methods and Supplementary Note). The DEPICT analysis highlighted 2,330 reconstituted gene sets (after pruning for high levels of redundancy). These gene sets both confirmed and extended the MAGENTA and GRAIL findings, and identified novel pathways not identified in our previous height GWAS (for example regulation of beta-catenin, biology related to

glycosaminoglycans such as chondroitin sulfate and hyaluronic acid, and mTOR signaling) (Supplementary Table 14). Gene sets identified based on 327 strictly novel height variants (>1Mb from the 180 known variants loci) highly resembled gene sets highlighted by the already known 180 loci (Spearman's rank correlation coefficient between gene set enrichment Z-scores $r=0.91$, $P=2\times 10^{-16}$). Thus, the variants discovered through increased sample size continued to highlight specific and relevant growth-associated gene sets, while the combined analysis of both old and new loci provided the additional power needed to identify new gene sets (Table 3 and Supplementary Table 14).

The DEPICT analysis also prioritized tissues and individual genes. We found that genes within associated height loci were enriched for expression in tissues related to chondrocytes (cartilage, joint capsule, synovial membrane, and joints; $P<5.5\times 10^{-9}$, $FDR<0.001$), and other musculoskeletal, cardiovascular, and endocrine tissue-types ($FDR<0.05$) (Fig. 3; Supplementary Fig. 8; Supplementary Table 15). We also showed that a subset of the 697 height associated SNPs that represented lead cis-eQTLs in blood defined 75 genes that were collectively enriched for expression in cartilage ($P=0.008$) (Supplementary Note and Supplementary Table 8).

We used DEPICT to prioritize 649 genes (at $FDR<0.05$) within height-associated loci (Table 3 and Supplementary Table 16). Of these 649 genes, 202 genes (31%) were either significant in the GRAIL analysis (Supplementary Tables 13 and 16) and/or overlapped with a list of abnormal skeletal growth syndromes that we assembled from the OMIM database¹² ($n=40$; Supplementary Tables 9 and 16). Many other newly prioritized genes had additional supporting evidence (Supplementary Table 16), including specific expression in the growth plate¹², and/or connections to relevant pathways (for example: *GLI2* and *LAMA5* [hedgehog signaling]; *FRS2* [FGF signaling]; *AXIN2*, *NFATC1*, *CTNNB1*, *FBXW11*, *WNT4*, *WNT5A* and *VANGL2* [WNT/beta-catenin signaling]; *SMAD3* and *MTOR* [TGF-beta and/or mTOR signaling]; *WWP2/miR140*, *IBSP*, *SHOX2* and *SP3* [required in mice for proper bone and cartilage formation]; *CHYS1*, *DSE* and *PCOLCE2* [glycosaminoglycan/collagen metabolism]; *SCARA3*, *COPZ2*, *TBX18*, *CRISPLD1* and *SLIT3* [differential expression in growth plate and predicted to be in highly relevant pathways]).

DEPICT also prioritizes genes that are new candidates for playing a role in skeletal growth. The genes newly and strongly implicated in this study included not only genes with obvious relationships to skeletal biology, such as *SOX5* and collagen genes, but also genes that have no clear published connection to skeletal growth, and likely represent as yet unknown biology (Table 3 and Supplementary Table 16). DEPICT strongly prioritized genes that do not have published annotations related to growth-related pathways but are predicted to be in gene sets that are both enriched in the associated loci and clearly connected to growth. These include genes newly predicted to be in pathways related to cartilage or bone development (*FAM101A*, *CRISPLD1* and the noncoding RNA *LINC00476*), collagen or extracellular matrix (*GLT8D2*, *CCDC3*, and *ZCCHC24*), histone demethylation (*ATAD2B* and *TSTD2*) and other genes predicted to have skeletal phenotypes but not currently annotated as belonging to relevant pathways (*ARSJ*, *PSKH1*, *COPZ2*, *ADAMTS17* and the microRNA cluster *MIR17HG*). Of note, mutations in both *ADAMTS17* and *MIR17HG* have been identified as causes of syndromic short stature in humans^{15,16}.

As suggested by the prioritization of *ADAMTS17* and *MIR17HG*, it is possible that some of the newly highlighted genes may also underlie new syndromes of abnormal skeletal growth. As a further proof of principle, the second entry on our list of prioritized genes (Table 3 and Supplementary Table 16), *CHSY1*, was not a known monogenic gene in the OMIM database¹² when we assembled our list, but mutations in this gene have since been shown to cause a syndrome including brachydactyly and short stature^{17,18}. Thus, the novel DEPICT method, applied to the larger GWAS data set, not only identified similar biology to GRAIL and MAGENTA but also implicated a large number of additional genes, gene sets and pathways that are likely important in skeletal biology and human growth.

Discussion

By performing a large GWAS study on adult height, a highly heritable polygenic trait, we have provided answers to several current questions of relevance to the genetic study of polygenic diseases and traits. First, we showed that by conducting larger GWAS, we can identify SNPs that explain a substantial proportion of the heritability attributable to common variants. As hypothesized by Yang *et al.* (2010), the heritability directly accounted for by variants identified by GWAS and inferred by whole-genome estimation approaches are converging with increasing sample size. The variance explained by genome-wide significant SNPs has increased from 3–5% with discovery samples of ~25,000 (ref. 19) to 10% with a discovery sample size of ~130,000 (ref. 6) to 16% with a discovery sample size of 250,000 (this study), and the variance explained from all captured common SNPs is ~50%^{4,5}. The variance explained by genome-wide significant SNPs on a chromosome is also proportional to its length, consistent with the conclusion made by Yang *et al.*⁵ using all SNPs (Supplementary Fig. 9). Our new results show that ~21%, ~24% and ~29% of phenotypic variance in independent validation samples is captured by the best ~2,000, ~3,700 and ~9,500 SNPs respectively selected in the discovery samples (Table 1), and that the correlation between actual and predicted height in independent samples from the same population has increased to 0.41 (maximum prediction $R^2 = 0.41^2 = 0.17$, Fig. 2d). The results are consistent with a genetic architecture for human height that is characterized by a very large but finite number (thousands) of causal variants, located throughout the genome but clustered in both a biological and genomic manner. Such a genetic architecture may be described as pseudo-infinitesimal, and may characterize many other polygenic traits and diseases. There is also strong evidence of multiple alleles at the same locus segregating in the population and for associated loci to overlap with Mendelian forms, suggesting a large but finite genomic mutational target for height, and effect sizes ranging from minute (<1mm; ~0.01 SDs) to gigantic (>300mm; >3 SDs, in the case of monogenic mutations).

It has been argued that the biological information emerging from GWA studies will become less relevant as sample sizes increase, because as thousands of associated variants are discovered, the range of implicated genes and pathways will lose specificity and cover essentially the entire genome²⁰. If this were the case, then increasing sample sizes would not help to prioritize follow up studies aimed at identifying and understanding new biology, and the associated loci would blanket the entire genome. Our study provides strong evidence to the contrary: the identification of many 100's and even 1000's of associated variants can continue to provide biologically relevant information. In other words, the variants identified

in larger sample sizes both display a stronger enrichment of pathways clearly relevant to skeletal growth and prioritize many additional new and relevant genes. Furthermore, the associated variants are often non-randomly and tightly clustered (typically separated by <250 kb), resulting in the frequent presence of multiple associated variants in a locus. The observations that genes and especially pathways are now beginning to be implicated by multiple variants suggests that the larger set of results retain biological specificity but that at some point, a new set of associated variants will largely highlight the same genes, pathways and biological mechanisms as have already been seen. This endpoint (which we have not clearly reached for height) could be considered analogous to reaching “saturation” in model organism mutagenesis screens, where new alleles typically map to previously identified genes²¹.

We have identified a large number of gene sets and pathways that are enriched for associations with height. Although the number of gene sets and pathways is large, many are overlapping and likely represent multiple annotations of a much smaller set of core biological mechanisms. We also highlight individual genes within associated loci as being relevant to skeletal growth, including candidates for contributing to syndromes of abnormal skeletal growth; for example, we strongly implicated *CHSY1*, recently identified as an underlying cause of a monogenic syndrome with short stature and brachydactyly^{17,18}. The lists of prioritized genes and pathways should therefore provide a rich trove of data for future studies of skeletal growth; to facilitate such studies, we have made our results (including genome-wide association results and complete list of highlighted genes and pathways) publicly available. Based on the results of large genetic studies of height, we anticipate that increasing the number of associated loci for other traits and diseases could yield similarly rich lists that would generate new biological hypotheses and motivate future research into the basis of human biology and disease.

URLs

The Genetic Investigation of Anthropometric Traits (GIANT) Consortium, http://www.broadinstitute.org/collaboration/giant/index.php/GIANT_consortium; The Mouse Genetics Initiative, www.informatics.jax.org

ONLINE METHODS

Genome-wide association study meta-analysis

We combined height summary association statistics from 79 genome-wide association (GWA) studies in a meta-analysis of 253,288 individuals using the same methods and studies as previously described⁶ and additional studies as described in Supplementary Tables 17–19. A total of 2,550,858 autosomal SNPs were meta-analyzed using inverse-variance fixed effects method using METAL²².

GCTA-COJO: conditional and joint multiple SNPs analysis

We used GCTA-COJO analysis^{7,8} to select the top associated SNPs. This method uses the summary statistics from the meta-analysis and LD correlations between SNPs estimated from a reference sample to perform a conditional association analysis⁷. The method starts

with an initial model of the SNP that shows the strongest evidence of association across the whole genome. It then implements the association analysis conditioning on the selected SNP(s) to search for the top SNPs one-by-one iteratively via a stepwise model selection procedure until no SNP has a conditional P -value that passes the significance level. Finally, all the selected SNPs are fitted jointly in the model for effect size estimation. We used 6,654 unrelated individuals from the ARIC cohort as the reference sample for LD estimation. There were ~3.0M SNPs included in the original meta-analysis. We included in this analysis only the SNPs (~2.48M) on HapMap2 and with sample size > 50,000. We used the genome-wide significance level $P < 5 \times 10^{-8}$ (as reported in Supplementary Table 1).

Metabochip replication

We combined height summary association statistics from 37 independent studies genotyped using Illumina's Metabochip array⁹ in a meta-analysis of 80,067 individuals of European ancestry (Supplementary Tables 20–22). Each study tested association between each genotyped SNP and the same QC procedures, height transformations, adjustment, and inheritance model as described for the GWA analysis. Genomic control correction was applied to results for each study prior to meta-analysis, using a set of 4,427 SNPs associated with QT interval to control study-specific inflation factors. We used the inverse-variance fixed effects meta-analysis method.

Validation – linear mixed model (LMM) based association analysis

Each of 15 studies (59,380 individuals) used genome-wide SNP information to calculate a genomic relationship matrix (GRM) for all pairs of individuals and used this to correct association statistics for cryptic relatedness and population stratification. Each study used a linear mixed model as implemented in the software EMMAX²³. Meta-analysis was performed as described for the standard GWAS and using a single GC correction. Each study additionally repeated the analyses for each chromosome using a GRM generated from the remaining 21 chromosomes, or in the case of the largest study (WGHS) repeating the analysis for all odd numbered chromosomes using a GRM generated from the even numbered chromosomes and vice versa. Each study then combined association results from the 22 or 2 parts of the genome into one set of data and we repeated the single GC meta-analysis.

Validation – within family (transmission) association analyses

A pure transmission based analysis was performed in seven cohorts for SNPs representing 416 signals of association (Supplementary Note), selected after repeating meta-analysis excluding these studies, with single GC correction. Filtering of low imputation quality SNPs in the studies was followed by inverse variance method of meta-analysis of the family based results. Because of the presence of related individuals, family based studies have lower power at a given sample size. For each study, we calculated the effective sample size (the size of a sample of unrelated individuals that would have the equivalent power; see Supplementary Note and Winkler *et al.*²⁴). Estimation of winner's curse in our data set was performed by repeating the meta-analysis excluding either the family-based studies or excluding random sets of studies from GIANT matched by effective sample size to the

family based studies. Independent genome-wide significant loci were selected from each meta-analysis. Power for replication in the excluded samples was estimated at different P -value thresholds and the deficit in replications (number of replications expected minus number observed) was calculated. The contribution of the winner's curse to the deficit in replications was estimated as the average deficit across the three sets of random non-family-based cohorts. By subtracting this from the deficit observed for the family-based cohorts, we estimated the lack of replication that could be attributed to stratification (either inflation of effect size for true associations, or false positive associations).

Variance and heritability explained

We used GCTA-COJO analysis (Online Methods) to select the top associated SNPs at a range of stringent significance levels (5×10^{-3} , 5×10^{-4} , 5×10^{-5} , ..., 5×10^{-8}) for estimation and prediction analyses. We then quantified the variance explained by those selected SNPs using a three-stage analysis, i.e. within-family prediction, GCTA-GREML analysis and population based prediction, in five validation studies (B-PROOF, FRAM, QIMR, TwinGene and WTCCC-T2D). To avoid sample overlap, we repeated the main GWAS meta-analysis and the multiple-SNP analysis five times, each time excluding one of the five validation studies. This approach ensured complete independence between data used to discover SNPs, and data used to estimate how much variance in height these SNPs explained and how well they predicted height. For the within-family prediction analyses, we selected 1,622, 2,758 and 1,597 pairs of full sibs from the QIMR, TwinGene and FRAM cohorts, respectively, with one sib pair per family. For the whole-genome estimation and prediction analyses, we used GCTA-GRM⁸ to estimate the genetic relatedness between individuals and selected unrelated individuals with pairwise genetic relatedness < 0.025 in each of the five studies, i.e. B-PROOF ($n = 2,555$), FRAM ($n = 1,145$), QIMR ($n = 3,627$), TwinGene ($n = 5,668$) and WTCCC-T2D ($n = 1,914$).

Within-family prediction analysis

We used the SNPs selected from GCTA-COJO analysis to create a genetic predictor (also called "genetic profile score") for each of all the full sibs using PLINK²⁵. We then adjusted the genetic predictor by the first 20 principal components (PCs) generated from the principal component analysis (PCA)²⁶. By comparing the predictors within and between families, we partitioned the variance in the predictor analysis into components due to real SNP effects (V_g), errors in estimating SNP effects (V_e), and population structure ($C_g + C_e$), as described in the Online Methods below.

We calculated the weighted average of each of the four (co)variance components over the three cohorts by their sample size, i.e. $\sum_i (V_{g(i)} n_i) / \sum_i (n_i)$ with the subscript i indicating the cohort and n being the sample size. From the results of these partitioning analyses within families we can infer what the prediction R^2 (Equation 19 in Online Methods below) and what the proportion of variance explained by SNPs (i.e. V_g/V_P with V_P being the phenotypic variance) would be in a sample of unrelated individuals when using the same set of SNPs. We then tested these inferred values in unrelated samples.

GCTA-GREML analysis

We performed the GREML analysis⁴ in GCTA⁸ to estimate the variance explained by the selected SNPs (h^2_g) in each of the five validation studies. This method fits the effects of a set of SNPs simultaneously in a model as random effects and estimates the genetic variance captured by all the fitted SNPs without testing the significance of association of any single SNPs. We combined the estimates of h^2_g from the five studies by the inverse-variance approach, i.e. $\sum_i (h^2_{g(i)}/SE^2_i)/\sum_i (1/SE^2_i)$.

Population-based prediction analysis

We created a genetic predictor using the selected SNPs for the unrelated individuals in each of the five validation studies. We then calculated the squared correlation (R^2) between phenotype and predictor in each validation study, and calculated the weighted average of the prediction R^2 by the sample size across the five studies, i.e. $\sum_i (R^2_i n_i)/\sum_i (n_i)$.

Theory and method to partition the variance in a genetic predictor

Under the assumption of an additive genetic model, the phenotype of a quantitative trait can be written as

$$y+g+\varepsilon=\sum_i x_i b_i+\varepsilon \quad [1]$$

where y is the trait phenotype, g is the total genetic effect of all SNPs, x is an indicator variable for SNP genotypes, b is the SNP effect, and ε is the residual.

From this model, the additive genetic variance is

$$\text{var}(g)=\sum_i \text{var}(x_i) b_i^2+\sum_i \sum_{j(i \neq j)} \text{cov}(x_i, x_j) b_i b_j \quad [2]$$

with the first component being the expected value of additive genetic variance under linkage equilibrium (LE) and second component being the deviation from the expected value could be caused by linkage disequilibrium (LD), population structure or selection²⁷.

Considering a pair of full siblings in a family, the additive genetic covariance between the sibs is

$$\text{cov}(g_1, g_2)=\text{cov}\left(\sum_i x_{1i} b_i, \sum_i x_{2i} b_i\right)=\sum_i \text{cov}(x_{1i}, x_{2i}) b_i^2+\sum_i \sum_{j(i \neq j)} \text{cov}(x_{1i}, x_{2j}) b_i b_j \quad [3]$$

For full sibs,

$$\text{cov}(x_{1i}, x_{2i})=1/2 \text{var}(x_i),$$

$\text{cov}(x_{1i}, x_{2j}) = \frac{1}{2}\text{cov}(x_i, x_j)$ for SNPs that are in LD, and

$\sum_i \sum_{j(i \neq j)} \text{cov}(x_{1i}, x_{2j}) b_i b_j = \sum_i \sum_{j(i \neq j)} \text{cov}(x_i, x_j) b_i b_j$ for SNPs that are not in LD (as shown by both empirical and simulation results).

Let $V_g = \sum_i \text{var}(x_i) b_i^2 + \sum_i \sum_{j(i \neq j)} \text{cov}(x_i, x_j) b_i b_j$ | (SNPs are in LD), and

$C_g = \sum_i \sum_{j(i \neq j)} \text{cov}(x_i, x_j) b_i b_j$ | (SNPs are not in LD but correlated due to population structure)

Therefore, the genetic variance is

$$\text{var}(g) = V_g + C_g \quad [4]$$

The genetic covariance between a pair of full-sibs is

$$\text{cov}(g_1, g_2) = \frac{1}{2} V_g + C_g \quad [5]$$

If we take a set of SNPs with their effects estimated from GCTA-COJO analysis (Online Methods), and create a predictor using these SNPs in an independent validation sample, we can write the predictor as

$$\hat{g} = \sum_i x_i \hat{b}_i \quad [6]$$

where \hat{b} is the estimate of b with $\hat{b} = b + e$ with e being the error in estimating b .

If we assume b and e are independent and denote $V_e = \sum_i \text{var}(x_i) e_i^2$ and

$C_e = \sum_i \sum_{j(i \neq j)} \text{cov}(x_i, x_j) e_i e_j$, the variance of the predictor is

$$\begin{aligned} \text{var}(\hat{g}) &= \text{var}(\sum_i x_i \hat{b}_i) = \sum_i \text{var}(x_i) \hat{b}_i^2 + \sum_i \sum_{j(i \neq j)} \text{cov}(x_i, x_j) \hat{b}_i \hat{b}_j \\ &= \sum_i \text{var}(x_i) b_i^2 + \sum_i \text{var}(x_i) e_i^2 + \sum_i \sum_{j(i \neq j)} \text{cov}(x_i, x_j) b_i b_j + \sum_i \sum_{j(i \neq j)} \text{cov}(x_i, x_j) e_i e_j \quad [7] \\ &= V_g + V_e + C_g + C_e \end{aligned}$$

The covariance between the predictors of a pair of full-sibs is

$$\begin{aligned} \text{cov}(\hat{g}_1, \hat{g}_2) &= \text{cov}(\sum_i x_{1i} \hat{b}_i, \sum_i x_{2i} \hat{b}_i) = \frac{1}{2} \sum_i \text{var}(x_i) \hat{b}_i^2 + \sum_i \sum_{j(i \neq j)} \text{cov}(x_{1i}, x_{2j}) \hat{b}_i \hat{b}_j \quad [8] \\ &= \frac{1}{2} V_g + \frac{1}{2} V_e + C_g + C_e \end{aligned}$$

The covariance between the true phenotype and the predictor of a same individual is

$$\text{cov}(y, \hat{g}) = \text{cov}(g + \varepsilon, g + e) = \text{var}(g) = V_g + C_g \quad [9]$$

The covariance between the true phenotype of one sib and the predictor of the other sib is

$$\begin{aligned} \text{cov}(y_1, \hat{g}_2) &= \text{cov}(g_1 + \varepsilon_1, g_2 + e_2) \\ &= \frac{1}{2} \sum_i \text{var}(x_i) b_i^2 + \sum_i \sum_{j(i \neq j)} \text{cov}(x_i, x_j) b_i b_j = \frac{1}{2} V_g + C_g \quad [10] \end{aligned}$$

If we define $\hat{g} = \hat{g}_1 - \hat{g}_2$ and $y = y_1 - y_2$,

$$\text{var}(\Delta \hat{g}) = \text{var}(\hat{g}_1) + \text{var}(\hat{g}_2) - 2\text{cov}(\hat{g}_1, \hat{g}_2) = V_g + V_e \quad [11]$$

$$\text{cov}(\Delta y, \Delta \hat{g}) = \text{cov}(y_1, \hat{g}_1) + \text{cov}(y_2, \hat{g}_2) - \text{cov}(y_1, \hat{g}_2) - \text{cov}(y_2, \hat{g}_1) = V_g \quad [12]$$

We therefore can calculate these four parameters as

$$V_g = \text{cov}(\Delta y, \Delta \hat{g}) \quad [13]$$

$$V_e = \text{var}(\Delta \hat{g}) - V_g \quad [14]$$

$$C_g = \text{cov}(y, \hat{g}) - V_g \quad [15]$$

$$C_e = 2\text{cov}(\hat{g}_1, \hat{g}_2) - \text{var}(\hat{g}) - C_g \quad [16]$$

where V_g can be interpreted as the variance explained by real SNP effects, C_g is the covariance between predictors attributed to the real effects of SNPs that are not in LD but correlated due to population stratification, V_e is the accumulated variance due to the errors in estimating SNP effects, and C_e is the covariance between predictors attributed to errors in estimating the effects of SNPs that are correlated due to population stratification.

To assess the prediction accuracy, we usually perform a regression analysis of the real phenotype against the predictor, i.e.

$$y = \beta_0 + \hat{g} \beta_1 + \varepsilon \quad [17]$$

so that the regression slope is actually

$$\beta = \text{cov}(y, \hat{g}) / \text{var}(\hat{g}) = (V_g + C_g) / (V_g + V_e + C_g + C_e) \quad [18]$$

with the regression R^2 being

$$R^2 = (V_g + C_g)^2 / (V_g + V_e + C_g + C_e) \quad [19]$$

In the absence of population structure,

$$R^2 = V_g^2 / (V_g + V_e) \quad [20]$$

Variance explained by SNPs in proximity to the top associated SNPs

We performed analyses to quantify the variance explained by SNPs in close physical proximity to the top associated SNPs in 9,500 unrelated individuals (pairwise genetic relatedness < 0.025) from a combined dataset of the QIMR and TwinGene cohorts. As in previous analyses, to avoid sample overlap between discovery and validation studies, we repeated the discovery meta-analysis excluding the QIMR and TwinGene cohorts, and identified 643 genome-wide significant SNPs from the GCTA-COJO analysis of the summary statistics using ARIC data for LD estimation. We used GCTA-GREML analysis^{4,8} to quantify the phenotypic variance explained by all the common SNPs (MAF > 0.01) within 100Kb, 500Kb or 1Mb of the 643 genome-wide significant SNPs. We show in Supplementary Figure 6a that there are 104K, 423K and 745K SNPs within 100Kb, 500Kb and 1Mb of the top associated SNPs, which explain 20.8% (s.e. = 1.3%), 25.7% (s.e. = 1.8%) and 29.5% (s.e. = 2.2%) of phenotypic variance, respectively. We then applied a regression-based approach²⁸ to adjust for LD between SNPs. The estimates of variance explained after LD-adjustment were slightly higher than those without adjustment, and the ratio of between the estimates with and without LD-adjustment was consistently ~1.05 regardless of the window size (Supplementary Fig. 6a). However, the difference is small.

We then sought to investigate whether or not there is an enrichment of additional association signals at the top associated loci. We varied the window size from 20Kb to 50Kb, 100Kb, 150Kb, 200Kb, 300Kb, 400Kb, 500Kb, 750Kb and 1Mb, and fitted a two-component model in GCTA-GREML analysis, with the first component being the top associated SNPs and the second component being the rest of SNPs within the window. We found that the per-SNP variance explained excluding the top SNPs (variance explained by the second component divided by the number of SNPs included in this component) decreased with the size of window (Supplementary Fig. 6b), implying that SNPs in closer physical proximity to the top associated SNPs tend to explain disproportionately more variance.

Enrichment of associated SNPs in ENCODE regions, loci containing OMIM genes, eQTLs and nsSNPs

To identify putative causal variants among the height-associated markers, we explored whether the height-associated SNPs were in strong LD ($r^2 > 0.8$) with non-synonymous coding variants in 1000 Genomes Project CEU Phase 1 data, showed an effect on whole blood gene expression levels, were located within ENCODE-annotated regions, were within loci harboring monogenic growth genes, or had previously been associated with other complex traits in NHGRI GWAS catalog ($P < 5 \times 10^{-8}$) (Supplementary Tables 7–11). To estimate the empirical assessment of enrichment for listed features we used 10,000

permutations of random sets of SNPs matched to the pruned ($LD\ r^2>0.1$) 628 height-associated SNPs by the number of nearby genes (within a distance of $LD\ r^2>0.5$), physical distance to nearest gene, and minor allele frequency.

Enrichment of genes in associated loci in known and novel pathways

Data-Driven Expression-Prioritized Integration for Complex Traits (DEPICT) analysis—The DEPICT method (T.H.P. *et al.*, unpublished data; see Geller *et al.*²⁹ for an earlier application of DEPICT) relies on pre-computed predictions of gene function based on a heterogeneous panel of 77,840 expression arrays (Fehrmann *et al.*, manuscript in review; ref. 30), 5,984 molecular pathways (based on 169,810 high-confidence experimentally derived protein-protein interactions³¹), 2,473 phenotypic gene sets (based on 211,882 gene-phenotype pairs from the Mouse Genetics Initiative (see URLs)), 737 Reactome pathways³², 5,083 Gene Ontology terms¹⁴, and 184 KEGG pathways³³. The method leverages these predictions to extend the functional annotations of genes, including genes that previously had only a few or no functional annotations. DEPICT facilitates the analysis of GWAS data by (1) assessing whether genes in associated loci are enriched in tissue-specific expression, (2) identifying reconstituted gene sets that are enriched in genes from associated loci, and (3) systematically identifying the most likely causal gene(s) at a given locus (see Supplementary Note for a more detailed description of DEPICT). In order to run DEPICT, we first clumped the summary statistics from the meta-analysis using 500kb flanking regions, $r^2>0.1$, and excluded SNPs with $P\ 5\times 10^{-8}$, which resulted in 628 SNPs. We then mapped genes to each of the 628 best-associated SNPs. For a given SNP, this was accomplished by including all genes that resided within $LD\ r^2>0.5$ boundaries of that SNP, and always including the nearest gene, to its locus gene set. We used a locus definition that was calibrated using the GWAS data for height levels presented in this paper and optimized capture of known monogenic genes for those traits. We merged overlapping loci, and excluded loci that mapped near or within the major histocompatibility complex locus (chromosome 6, location: 20 to 40 Mb), which resulted in a list of 566 non-overlapping loci that were used as input to DEPICT. HapMap Project Phase II CEU genotype data was used for all LD calculations.

GRAIL and MAGENTA analysis—The GRAIL¹⁴ algorithm was run using the LD pruned ($r^2>0.1$) 628 SNPs without correcting for gene size, and using text-mining data up to December 2006 (default setting). MAGENTA¹³ was run with the single genomic control adjusted summary statistics as input using default settings and excluding the HLA region.

Supplementary Material

Refer to Web version on PubMed Central for supplementary material.

Authors

Andrew R Wood^{1,*}, Tonu Esko^{2,3,4,5,*}, Jian Yang^{6,7,*}, Sailaja Vedantam^{3,4,*}, Tune H Pers^{3,4,5,8,*}, Stefan Gustafsson^{9,10,*}, Audrey Y Chu¹¹, Karol Estrada^{4,12,13}, Jian'an Luan¹⁴, Zoltán Kutalik^{15,16,17}, Najaf Amin¹⁸, Martin L Buchkovich¹⁹, Damien C Croteau-Chonka^{19,20}, Felix R Day¹⁴, Yanan Duan²¹, Tove Fall^{9,10,22}, Rudolf

Fehrmann²³, Teresa Ferreira²⁴, Anne U Jackson²⁵, Juha Karjalainen²³, Ken Sin Lo²⁶, Adam E Locke²⁵, Reedik Mägi^{2,24}, Evelin Mihailov^{2,27}, Eleonora Porcu²⁸, Joshua C Randall^{24,29}, André Scherag^{30,31}, Anna AE Vinkhuyzen⁶, Harm-Jan Westra²³, Thomas W Winkler³², Tsegaselassie Workalemahu³³, Jing Hua Zhao¹⁴, Devin Absher³⁴, Eva Albrecht³⁵, Denise Anderson³⁶, Jeffrey Baron³⁷, Marian Beekman^{38,39}, Ayse Demirkan^{18,40}, Georg B Ehret^{41,42}, Bjarke Feenstra⁴³, Mary F Feitosa⁴⁴, Krista Fischer², Ross M Fraser⁴⁵, Anuj Goel^{24,46}, Jian Gong⁴⁷, Anne E Justice⁴⁸, Stavroula Kanoni⁴⁹, Marcus E Kleber^{50,51}, Kati Kristiansson⁵², Unhee Lim⁵³, Vaneet Lotay⁵⁴, Julian C Lui³⁷, Massimo Mangino⁵⁵, Irene Mateo Leach⁵⁶, Carolina Medina-Gomez^{12,57,58}, Michael A Nalls⁵⁹, Dale R Nyholt⁶⁰, Cameron D Palmer^{3,4}, Dorota Pasko¹, Sonali Pechlivanis³⁰, Inga Prokopenko^{24,61,62}, Janina S Ried³⁵, Stephan Ripke^{13,63}, Dmitry Shungin^{64,65,66}, Alena Stancáková⁶⁷, Rona J Strawbridge⁶⁸, Yun Ju Sung⁶⁹, Toshiko Tanaka⁷⁰, Alexander Teumer⁷¹, Stella Trompet^{72,73}, Sander W van der Laan⁷⁴, Jessica van Setten⁷⁵, Jana V Van Vliet-Ostaptchouk⁷⁶, Zhaoming Wang^{77,78,79,80}, Loïc Yengo^{81,82,83}, Weihua Zhang^{84,85}, Uzma Afzal^{84,85}, Johan Ärnlöv^{9,10,86}, Gillian M Arscott⁸⁷, Stefania Bandinelli⁸⁸, Amy Barrett⁶¹, Claire Bellis⁸⁹, Amanda J Bennett⁶¹, Christian Berne⁹⁰, Matthias Blüher^{91,92}, Jennifer L Bolton⁴⁵, Yvonne Böttcher⁹¹, Heather A Boyd⁴³, Marcel Bruinenberg⁹³, Brendan M Buckley⁹⁴, Steven Buyske^{95,96}, Ida H Caspersen⁹⁷, Peter S Chines⁹⁸, Robert Clarke⁹⁹, Simone Claudi-Boehm¹⁰⁰, Matthew Cooper³⁶, E Warwick Daw⁴⁴, Pim A De Jong¹⁰¹, Joris Deelen^{38,39}, Graciela Delgado⁵⁰, Josh C Denny¹⁰², Rosalie Dhonukshe-Rutten¹⁰³, Maria Dimitriou¹⁰⁴, Alex SF Doney¹⁰⁵, Marcus Dörr^{77,106}, Niina Eklund^{52,107}, Elodie Eury^{81,82,83}, Lasse Folkersen⁶⁸, Melissa E Garcia¹⁰⁸, Frank Geller⁴³, Vilmantas Giedraitis¹⁰⁹, Alan S Go¹¹⁰, Harald Grallert^{35,111,112}, Tanja B Grammer⁵⁰, Jürgen Gräßler¹¹³, Henrik Grönberg²², Lisette C.P.G.M. de Groot¹⁰³, Christopher J Groves⁶¹, Jeffrey Haessler⁴⁷, Per Hall²², Toomas Haller², Goran Hallmans¹¹⁴, Anke Hannemann⁷⁸, Catharina A Hartman¹¹⁵, Maija Hassinen¹¹⁶, Caroline Hayward¹¹⁷, Nancy L Heard-Costa^{118,119}, Quinta Helmer^{38,120,121}, Gibran Hemani^{6,7}, Anjali K Henders⁶⁰, Hans L Hillege^{56,122}, Mark A Hlatky¹²³, Wolfgang Hoffmann^{77,124}, Per Hoffmann^{125,126,127}, Oddgeir Holmen¹²⁸, Jeanine J Houwing-Duistermaat^{38,120}, Thomas Illig^{111,129}, Aaron Isaacs^{18,130}, Alan L James^{131,132}, Janina Jeff⁵⁴, Berit Johansen⁹⁷, Åsa Johansson¹³³, Jennifer Jolley^{134,135}, Thorhildur Juliusdottir²⁴, Juhani Juntila¹³⁶, Abel N Kho¹³⁷, Leena Kinnunen⁵², Norman Klopp^{111,129}, Thomas Kocher¹³⁸, Wolfgang Kratzer¹³⁹, Peter Lichtner¹⁴⁰, Lars Lind¹⁴¹, Jaana Lindström⁵², Stéphane Lobbens^{81,82,83}, Mattias Lorentzon¹⁴², Yingchang Lu^{54,143}, Valeriya Lyssenko¹⁴⁴, Patrik KE Magnusson²², Anubha Mahajan²⁴, Marc Maillard¹⁴⁵, Wendy L McArdle¹⁴⁶, Colin A McKenzie¹⁴⁷, Stela McLachlan⁴⁵, Paul J McLaren^{148,149}, Cristina Menni⁵⁵, Sigrun Merger¹⁰⁰, Lili Milani², Alireza Moayyeri⁵⁵, Keri L Monda^{48,150}, Mario A Morken⁹⁸, Gabriele Müller¹⁵¹, Martina Müller-Nurasyid^{35,152,153,154}, Arthur W Musk¹⁵⁵, Narisu Narisu⁹⁸, Matthias Nauck^{77,78}, Ilja M Nolte¹²², Markus M Nöthen^{126,127}, Laticia Oozageer⁸⁴, Stefan Pilz^{156,157}, Nigel W Rayner^{24,29,61}, Frida Renstrom⁶⁴, Neil R Robertson^{24,61}, Lynda M Rose¹¹, Ronan Rousset^{158,159,160}, Serena Sanna²⁸, Hubert Scharnagl¹⁶¹, Salome Scholtens¹²², Fredrick R Schumacher¹⁶², Heribert Schunkert^{154,163}, Robert A

Scott¹⁴, Joban Sehmi^{84,85}, Thomas Seufferlein¹³⁹, Jianxin Shi¹⁶⁴, Karri Silventoinen¹⁶⁵, Johannes H Smit^{166,167}, Albert Vernon Smith^{168,169}, Joanna Smolonska^{23,122}, Alice V Stanton¹⁷⁰, Kathleen Stirrups^{29,49}, David J Stott¹⁷¹, Heather M Stringham²⁵, Johan Sundström¹⁴¹, Morris A Swertz²³, Ann-Christine Syvänen^{9,172}, Bamidele O Tayo¹⁷³, Gudmar Thorleifsson¹⁷⁴, Jonathan P Tyrer¹⁷⁵, Suzanne van Dijk¹², Natasja M van Schoor¹⁵⁶, Nathalie van der Velde^{12,176}, Diana van Heemst^{38,73}, Floor VA van Oort¹⁷⁷, Sita H Vermeulen^{178,179}, Niek Verweij⁵⁶, Judith M Vonk¹²², Lindsay L Waite³⁴, Melanie Waldenberger¹¹¹, Roman Wennauer¹⁸⁰, Lynne R Wilkens⁵³, Christina Willenborg^{181,182}, Tom Wilsgaard¹⁸³, Mary K Wojczynski⁴⁴, Andrew Wong¹⁸⁴, Alan F Wright¹¹⁷, Qunyuan Zhang⁴⁴, Dominique Arveiler¹⁸⁵, Stephan JL Bakker¹⁸⁶, John Beilby^{87,187}, Richard N Bergman¹⁸⁸, Sven Bergmann^{16,17}, Reiner Biffar¹⁸⁹, John Blangero⁸⁹, Dorret I Boomsma¹⁹⁰, Stefan R Bornstein¹¹³, Pascal Bovet^{191,192}, Paolo Brambilla¹⁹³, Morris J Brown¹⁹⁴, Harry Campbell⁴⁵, Mark J Caulfield¹⁹⁵, Aravinda Chakravarti⁴¹, Rory Collins⁹⁹, Francis S Collins⁹⁸, Dana C Crawford^{196,197}, L Adrienne Cupples^{118,198}, John Danesh¹⁹⁹, Ulf de Faire²⁰⁰, Hester M den Ruijter^{74,201}, Raimund Erbel²⁰², Jeanette Erdmann^{181,182}, Johan G Eriksson^{52,203,204}, Martin Farrall^{24,46}, Ele Ferrannini^{205,206}, Jean Ferrières²⁰⁷, Ian Ford²⁰⁸, Nita G Forouhi¹⁴, Terrence Forrester¹⁴⁷, Ron T Gansevoort¹⁸⁶, Pablo V Gejman²⁰⁹, Christian Gieger³⁵, Alain Golay²¹⁰, Omri Gottesman⁵⁴, Vilmundur Gudnason^{168,169}, Ulf Gyllenstein¹³³, David W Haas²¹¹, Alistair S Hall²¹², Tamara B Harris¹⁰⁸, Andrew T Hattersley²¹³, Andrew C Heath²¹⁴, Christian Hengstenberg^{154,163}, Andrew A Hicks^{215,216}, Lucia A Hindorf²¹⁷, Aroon D Hingorani²¹⁸, Albert Hofman^{57,58}, G Kees Hovingh²¹⁹, Steve E Humphries²²⁰, Steven C Hunt²²¹, Elina Hypponen^{222,223,224}, Kevin B Jacobs^{79,80}, Marjo-Riitta Jarvelin^{85,225,226,227,228,229}, Pekka Jousilahti⁵², Antti M Jula⁵², Jaakko Kaprio^{52,107,230}, John JP Kastelein²¹⁹, Manfred Kayser^{57,231}, Frank Kee²³², Sirkka M Keinänen-Kiukaanniemi^{233,234}, Lambertus A Kiemeneij^{178,235}, Jaspal S Kooner^{84,236,237}, Charles Kooperberg⁴⁷, Seppo Koskinen⁵², Peter Kovacs^{91,92}, Aldi T Kraja⁴⁴, Meena Kumari²³⁸, Johanna Kuusisto²³⁹, Timo A Lakka^{116,240,241}, Claudia Langenberg^{14,238}, Loic Le Marchand⁵³, Terho Lehtimäki²⁴², Sara Lupoli^{243,244}, Pamela AF Madden²¹⁴, Satu Männistö⁵², Paolo Manunta^{245,246}, André Marette^{247,248}, Tara C Matise⁹⁶, Barbara McKnight²⁴⁹, Thomas Meitinger¹⁵⁴, Frans L Moll²⁵⁰, Grant W Montgomery⁶⁰, Andrew D Morris¹⁰⁵, Andrew P Morris^{2,24,251}, Jeffrey C Murray²⁵², Mari Nelis², Claes Ohlsson¹⁴², Albertine J Oldehinkel¹¹⁵, Ken K Ong^{14,184}, Willem H Ouwehand^{134,135}, Gerard Pasterkamp⁷⁴, Annette Peters^{111,154,253}, Peter P Pramstaller^{215,216,254}, Jackie F Price⁴⁵, Lu Qi^{20,255}, Olli T Raitakari^{256,257}, Tuomo Rankinen²⁵⁸, DC Rao^{44,69,214}, Treva K Rice^{69,214}, Marylyn Ritchie²⁵⁹, Igor Rudan^{45,260}, Veikko Salomaa⁵², Nilesh J Samani^{261,262}, Jouko Saramies²⁶³, Mark A Sarzynski²⁵⁸, Peter EH Schwarz^{113,264}, Sylvain Sebert²²⁹, Peter Sever²⁶⁵, Alan R Shuldiner^{266,267}, Juha Sinisalo²⁶⁸, Valgerdur Steinthorsdottir¹⁷⁴, Ronald P Stolk¹²², Jean-Claude Tardif^{26,269}, Anke Tönjes^{91,92}, Angelo Tremblay²⁷⁰, Elena Tremoli²⁷¹, Jarmo Virtamo⁵², Marie-Claude Vohl^{248,272}, The electronic medical records and genomics (eMERGE) consortium²⁷³, The MIGen Consortium^{274,275}, The PAGE Consortium^{275,276}, The Lifelines Cohort Study^{275,277}, Philippe

Amouyel²⁷⁸, Folkert W Asselbergs^{218,279,280}, Themistocles L Assimes¹²³, Murielle Bochud^{191,192}, Bernhard O Boehm^{100,281}, Eric Boerwinkle²⁸², Erwin P Bottinger⁵⁴, Claude Bouchard²⁵⁸, Stéphane Cauchi^{81,82,83}, John C Chambers^{84,85,236}, Stephen J Chanock⁷⁹, Richard S Cooper¹⁷³, Paul IW de Bakker^{75,283,284}, George Dedoussis¹⁰⁴, Luigi Ferrucci⁷⁰, Paul W Franks^{64,65,255}, Philippe Froguel^{62,81,82,83}, Leif C Groop^{107,285}, Christopher A Haiman¹⁶², Anders Hamsten⁶⁸, M Geoffrey Hayes¹³⁷, Jennie Hui^{87,187,222}, David J. Hunter^{20,255,286}, Kristian Hveem¹²⁸, J Wouter Jukema^{72,280,287}, Robert C Kaplan²⁸⁸, Mika Kivimaki²³⁸, Diana Kuh¹⁸⁴, Markku Laakso²³⁹, Yongmei Liu²⁸⁹, Nicholas G Martin⁶⁰, Winfried März^{50,161,290}, Mads Melbye^{43,123}, Susanne Moebus³⁰, Patricia B Munroe¹⁹⁵, Inger Njølstad¹⁸³, Ben A Oostra^{18,130,291}, Colin NA Palmer¹⁰⁵, Nancy L Pedersen²², Markus Perola^{2,52,107}, Louis Pérusse^{248,270}, Ulrike Peters⁴⁷, Joseph E Powell^{6,7}, Chris Power²²⁴, Thomas Quertermous¹²³, Rainer Rauramaa^{116,241}, Eva Reinmaa², Paul M Ridker^{11,292}, Fernando Rivadeneira^{12,57,58}, Jerome I Rotter²⁹³, Timo E Saaristo^{294,295}, Danish Saleheen^{199,296,297}, David Schlessinger²⁹⁸, P Eline Slagboom^{38,39}, Harold Snieder¹²², Tim D Spector⁵⁵, Konstantin Strauch^{35,153}, Michael Stumvoll^{91,92}, Jaakko Tuomilehto^{52,299,300,301}, Matti Uusitupa^{302,303}, Pim van der Harst^{23,56,280}, Henry Völzke^{77,124}, Mark Walker³⁰⁴, Nicholas J Wareham¹⁴, Hugh Watkins^{24,46}, H-Erich Wichmann^{305,306,307}, James F Wilson⁴⁵, Pieter Zanen³⁰⁸, Panos Deloukas^{29,49,309}, Iris M Heid^{32,35}, Cecilia M Lindgren^{4,24}, Karen L Mohlke¹⁹, Elizabeth K Speliotes³¹⁰, Unnur Thorsteinsdottir^{174,311}, Inês Barroso^{29,312,313}, Caroline S Fox¹¹⁸, Kari E North^{48,314}, David P Strachan³¹⁵, Jacques S. Beckmann^{16,17,316}, Sonja I Berndt⁷⁹, Michael Boehnke²⁵, Ingrid B Borecki⁴⁴, Mark I McCarthy^{24,61,317}, Andres Metspalu^{2,27}, Kari Stefansson^{174,311}, André G Uitterlinden^{12,57,58}, Cornelia M van Duijn^{18,57,58,130}, Lude Franke²³, Cristen J Willer^{318,319,320}, Alkes L. Price^{4,286,321}, Guillaume Lettre^{26,269}, Ruth JF Loos^{14,54,143,322}, Michael N Weedon¹, Erik Ingelsson^{9,10,24}, Jeffrey R O'Connell²⁶⁶, Goncalo R Abecasis^{25,‡}, Daniel I Chasman^{11,292,‡}, Michael E Goddard^{323,324,‡}, Peter M Visscher^{6,7,‡}, Joel N Hirschhorn^{3,4,5,‡}, and Timothy M Frayling^{1,‡}

Affiliations

¹Genetics of Complex Traits, University of Exeter Medical School, University of Exeter, Exeter EX1 2LU, UK ²Estonian Genome Center, University of Tartu, Tartu 51010, Estonia ³Division of Endocrinology, Genetics and Basic and Translational Obesity Research, Boston Children's Hospital, Boston, MA 02115, USA ⁴Broad Institute of the Massachusetts Institute of Technology and Harvard University, Cambridge 02142, MA, USA ⁵Department of Genetics, Harvard Medical School, Boston, MA 02115, USA ⁶Queensland Brain Institute, The University of Queensland, Brisbane 4072, Australia ⁷The University of Queensland Diamantina Institute, The Translation Research Institute, Brisbane 4012, Australia ⁸Center for Biological Sequence Analysis, Department of Systems Biology, Technical University of Denmark, Lyngby 2800, Denmark ⁹Science for Life Laboratory, Uppsala University, Uppsala 75185, Sweden ¹⁰Department of Medical Sciences, Molecular Epidemiology, Uppsala University, Uppsala 75185, Sweden ¹¹Division of Preventive Medicine, Brigham and Women's Hospital, Boston, MA 02215, USA ¹²Department

of Internal Medicine, Erasmus Medical Center, 3015GE Rotterdam, The Netherlands ¹³Analytic and Translational Genetics Unit, Massachusetts General Hospital and Harvard Medical School, Boston, MA, USA ¹⁴MRC Epidemiology Unit, University of Cambridge, Institute of Metabolic Science, Addenbrooke's Hospital, Hills Road, Cambridge, CB2 0QQ, UK ¹⁵Institute of Social and Preventive Medicine (IUMSP), Centre Hospitalier Universitaire Vaudois (CHUV), Lausanne 1010, Switzerland ¹⁶Swiss Institute of Bioinformatics, Lausanne 1015, Switzerland ¹⁷Department of Medical Genetics, University of Lausanne, Lausanne 1005, Switzerland ¹⁸Genetic Epidemiology Unit, Department of Epidemiology, Erasmus University Medical Center, 3015 GE Rotterdam, The Netherlands ¹⁹Department of Genetics, University of North Carolina, Chapel Hill, NC 27599, USA ²⁰Channing Division of Network Medicine, Department of Medicine, Brigham and Women's Hospital and Harvard Medical School, Boston, MA 02115, USA ²¹Division of Statistical Genomics, Department of Genetics Washington University School of Medicine, St. Louis, MO, USA ²²Department of Medical Epidemiology and Biostatistics, Karolinska Institutet, Stockholm 17177, Sweden ²³Department of Genetics, University Medical Center Groningen, University of Groningen, 9700 RB Groningen, The Netherlands ²⁴Wellcome Trust Centre for Human Genetics, University of Oxford, Oxford OX3 7BN, UK ²⁵Center for Statistical Genetics, Department of Biostatistics, University of Michigan, Ann Arbor, MI 48109, USA ²⁶Montreal Heart Institute, Montreal, Quebec H1T 1C8, Canada ²⁷Institute of Molecular and Cell Biology, University of Tartu, Tartu 51010, Estonia ²⁸Istituto di Ricerca Genetica e Biomedica (IRGB), Consiglio Nazionale delle Ricerche, Cagliari, Sardinia 09042, Italy ²⁹Wellcome Trust Sanger Institute, Hinxton, Cambridge CB10 1SA, UK ³⁰Institute for Medical Informatics, Biometry and Epidemiology (IMIBE), University Hospital Essen, Essen, Germany ³¹Clinical Epidemiology, Integrated Research and Treatment Center, Center for Sepsis Control and Care (CSCC), Jena University Hospital, Jena, Germany ³²Department of Genetic Epidemiology, Institute of Epidemiology and Preventive Medicine, University of Regensburg, D-93053 Regensburg, Germany ³³Harvard School of Public Health, Department of Nutrition, Harvard University, Boston, MA 2115, USA ³⁴HudsonAlpha Institute for Biotechnology, Huntsville, AL 35806, USA ³⁵Institute of Genetic Epidemiology, Helmholtz Zentrum München - German Research Center for Environmental Health, D-85764 Neuherberg, Germany ³⁶Telethon Institute for Child Health Research, Centre for Child Health Research, The University of Western Australia, Western Australia 6008, Australia ³⁷Section on Growth and Development, Program in Developmental Endocrinology and Genetics, Eunice Kennedy Shriver National Institute of Child Health and Human Development, National Institutes of Health, Bethesda, MD 20892, USA ³⁸Netherlands Consortium for Healthy Aging (NCHA), Leiden University Medical Center, Leiden 2300 RC, The Netherlands ³⁹Department of Molecular Epidemiology, Leiden University Medical Center, 2300 RC Leiden, The Netherlands ⁴⁰Department of Human Genetics, Leiden University Medical Center, 2333 ZC Leiden, The Netherlands ⁴¹Center for Complex Disease Genomics, McKusick-Nathans Institute of Genetic Medicine, Johns Hopkins University School

of Medicine, Baltimore, MD 21205, USA ⁴²Cardiology, Department of Specialties of Internal Medicine, Geneva University Hospital, Geneva 1211, Switzerland ⁴³Department of Epidemiology Research, Statens Serum Institut, Copenhagen DK-2300, Denmark ⁴⁴Department of Genetics, Washington University School of Medicine, St. Louis, MO 63110, USA ⁴⁵Centre for Population Health Sciences, University of Edinburgh, Teviot Place, Edinburgh, EH8 9AG, Scotland, UK ⁴⁶Division of Cardiovascular Medicine, Radcliffe Department of Medicine, University of Oxford, Oxford OX3 9DU, UK ⁴⁷Division of Public Health Sciences, Fred Hutchinson Cancer Research Center, Seattle, WA 98109, USA ⁴⁸Department of Epidemiology, University of North Carolina at Chapel Hill, Chapel Hill, NC 27599, USA ⁴⁹William Harvey Research Institute, Barts and The London School of Medicine and Dentistry, Queen Mary University of London, EC1M 6BQ UK ⁵⁰Vth Department of Medicine (Nephrology, Hypertensiology, Endocrinology, Diabetology, Rheumatology), Medical Faculty of Mannheim, University of Heidelberg, Germany ⁵¹Department of Internal Medicine II, Ulm University Medical Centre, D-89081 Ulm, Germany ⁵²National Institute for Health and Welfare, FI-00271 Helsinki, Finland ⁵³Epidemiology Program, University of Hawaii Cancer Center, Honolulu, HI USA ⁵⁴The Charles Bronfman Institute for Personalized Medicine, Icahn School of Medicine at Mount Sinai, New York, NY 10029, USA ⁵⁵Department of Twin Research and Genetic Epidemiology, King's College London, London SE1 7EH, UK ⁵⁶Department of Cardiology, University Medical Center Groningen, University of Groningen, 9700RB Groningen, The Netherlands ⁵⁷Netherlands Consortium for Healthy Aging (NCHA), 3015GE Rotterdam, The Netherlands ⁵⁸Department of Epidemiology, Erasmus Medical Center, 3015GE Rotterdam, The Netherlands ⁵⁹Laboratory of Neurogenetics, National Institute on Aging, National Institutes of Health, Bethesda, MD 20892, USA ⁶⁰QIMR Berghofer Medical Research Institute, Queensland 4006, Australia ⁶¹Oxford Centre for Diabetes, Endocrinology and Metabolism, University of Oxford, Oxford OX3 7LJ, UK ⁶²Department of Genomics of Common Disease, School of Public Health, Imperial College London, Hammersmith Hospital, London, UK ⁶³Stanley Center for Psychiatric Research, Broad Institute of MIT and Harvard, Cambridge, MA 02142, USA ⁶⁴Department of Clinical Sciences, Genetic & Molecular Epidemiology Unit, Lund University Diabetes Center, Skåne University Hospital, Malmö 205 02, Sweden ⁶⁵Department of Public Health and Clinical Medicine, Unit of Medicine, Umeå University, Umeå 901 87, Sweden ⁶⁶Department of Odontology, Umeå University, Umeå 901 85, Sweden ⁶⁷University of Eastern Finland, FI-70210 Kuopio, Finland ⁶⁸Atherosclerosis Research Unit, Center for Molecular Medicine, Department of Medicine, Karolinska Institutet, Stockholm 17176, Sweden ⁶⁹Division of Biostatistics, Washington University School of Medicine, St. Louis, MO 63110, USA ⁷⁰Translational Gerontology Branch, National Institute on Aging, Baltimore MD 21225, USA ⁷¹Interfaculty Institute for Genetics and Functional Genomics, University Medicine Greifswald, D-17475 Greifswald, Germany ⁷²Department of Cardiology, Leiden University Medical Center, 2300 RC Leiden, The Netherlands ⁷³Department of Gerontology and Geriatrics, Leiden University Medical Center, 2300 RC Leiden,

The Netherlands ⁷⁴Experimental Cardiology Laboratory, Division Heart and Lungs, University Medical Center Utrecht, 3584 CX Utrecht, The Netherlands ⁷⁵Department of Medical Genetics, University Medical Center Utrecht, 3584 CX Utrecht, The Netherlands ⁷⁶Department of Endocrinology, University of Groningen, University Medical Center Groningen, Groningen, 9700 RB, The Netherlands ⁷⁷DZHK (Deutsches Zentrum für Herz-Kreislaufforschung – German Centre for Cardiovascular Research), partner site Greifswald, D-17475 Greifswald, Germany ⁷⁸Institute of Clinical Chemistry and Laboratory Medicine, University Medicine Greifswald, D-17475 Greifswald, Germany ⁷⁹Division of Cancer Epidemiology and Genetics, National Cancer Institute, National Institutes of Health, Bethesda, MD 20892, USA ⁸⁰Core Genotyping Facility, SAIC-Frederick, Inc., NCI-Frederick, Frederick, MD 21702, USA ⁸¹CNRS UMR 8199, F-59019 Lille, France ⁸²European Genomic Institute for Diabetes, F-59000 Lille, France ⁸³Université de Lille 2, F-59000 Lille, France ⁸⁴Ealing Hospital NHS Trust, Middlesex UB1 3HW, UK ⁸⁵Department of Epidemiology and Biostatistics, Imperial College London, London W2 1PG, UK ⁸⁶School of Health and Social Studies, Dalarna University, Falun, Sweden ⁸⁷PathWest Laboratory Medicine of Western Australia, NEDLANDS, Western Australia 6009, Australia ⁸⁸Geriatric Unit, Azienda Sanitaria Firenze (ASF), Florence, Italy ⁸⁹Department of Genetics, Texas Biomedical Research Institute, San Antonio, TX, USA ⁹⁰Department of Medical Sciences, Endocrinology, Diabetes and Metabolism, Uppsala University, Uppsala 75185, Sweden ⁹¹IFB Adiposity Diseases, University of Leipzig, D-04103 Leipzig, Germany ⁹²Department of Medicine, University of Leipzig, D-04103 Leipzig, Germany ⁹³LifeLines, University Medical Center Groningen, University of Groningen, 9700 RB Groningen, The Netherlands ⁹⁴Department of Pharmacology and Therapeutics, University College Cork, Cork, Ireland ⁹⁵Department of Statistics & Biostatistics, Rutgers University, Piscataway, N.J. USA ⁹⁶Department of Genetics, Rutgers University, Piscataway, N.J. USA ⁹⁷Department of Biology, Norwegian University of Science and Technology, Trondheim, Norway ⁹⁸Genome Technology Branch, National Human Genome Research Institute, NIH, Bethesda, MD 20892, USA ⁹⁹Clinical Trial Service Unit, Epidemiological Studies Unit, Nuffield Department of Population Health, University of Oxford, Oxford OX3 7LF, UK ¹⁰⁰Division of Endocrinology, Diabetes and Metabolism, Ulm University Medical Centre, D-89081 Ulm, Germany ¹⁰¹Department of Radiology, University Medical Center Utrecht, Utrecht, The Netherlands ¹⁰²Department of Biomedical Informatics, Vanderbilt University, Nashville, TN 37232, USA ¹⁰³Department of Human Nutrition, Wageningen University, Wageningen, The Netherlands ¹⁰⁴Department of Dietetics-Nutrition, Harokopio University, Athens, Greece ¹⁰⁵Medical Research Institute, University of Dundee, Ninewells Hospital and Medical School, Dundee DD1 9SY, UK ¹⁰⁶Department of Internal Medicine B, University Medicine Greifswald, D-17475 Greifswald, Germany ¹⁰⁷Institute for Molecular Medicine, University of Helsinki, FI-00014 Helsinki, Finland ¹⁰⁸Laboratory of Epidemiology and Population Sciences, National Institute on Aging, NIH, Bethesda, MD 20892, USA ¹⁰⁹Department of Public Health and Caring Sciences, Geriatrics, Uppsala University, Uppsala 75185, Sweden ¹¹⁰Kaiser

Permanente, Division of Research, Oakland, CA 94612, USA ¹¹¹Research Unit of Molecular Epidemiology, Helmholtz Zentrum München - German Research Center for Environmental Health, D-85764 Neuherberg, Germany ¹¹²German Center for Diabetes Research (DZD), Neuherberg, Germany ¹¹³Department of Medicine III, University Hospital Carl Gustav Carus, Technische Universität Dresden, D-01307 Dresden, Germany ¹¹⁴Department of Public Health and Clinical Medicine, Unit of Nutritional Research, Umeå University, Umeå 90187, Sweden ¹¹⁵Department of Psychiatry, University of Groningen, University Medical Center Groningen, Groningen, The Netherlands ¹¹⁶Kuopio Research Institute of Exercise Medicine, Kuopio, Finland ¹¹⁷MRC Human Genetics Unit, Institute of Genetics and Molecular Medicine, University of Edinburgh, Western General Hospital, Edinburgh, EH4 2XU, Scotland, UK ¹¹⁸National Heart, Lung, and Blood Institute, the Framingham Heart Study, Framingham MA 01702, USA ¹¹⁹Department of Neurology, Boston University School of Medicine, Boston, MA 02118, USA ¹²⁰Department of Medical Statistics and Bioinformatics, Leiden University Medical Center, 2300 RC Leiden, The Netherlands ¹²¹Faculty of Psychology and Education, VU University Amsterdam, Amsterdam, The Netherlands ¹²²Department of Epidemiology, University Medical Center Groningen, University of Groningen, 9700 RB Groningen, The Netherlands ¹²³Department of Medicine, Stanford University School of Medicine, Stanford, CA 94305, USA ¹²⁴Institute for Community Medicine, University Medicine Greifswald, D-17475 Greifswald, Germany ¹²⁵Division of Medical Genetics, Department of Biomedicine, University of Basel, Basel, Switzerland ¹²⁶Department of Genomics, Life & Brain Center, University of Bonn, Bonn, Germany ¹²⁷Institute of Human Genetics, University of Bonn, Bonn, Germany ¹²⁸Department of Public Health and General Practice, Norwegian University of Science and Technology, Trondheim 7489, Norway ¹²⁹Hannover Unified Biobank, Hannover Medical School, Hannover, D-30625 Hannover, Germany ¹³⁰Center for Medical Systems Biology, Leiden, The Netherlands ¹³¹Department of Pulmonary Physiology and Sleep Medicine, NEDLANDS, Western Australia 6009, Australia ¹³²School of Medicine and Pharmacology, University of Western Australia, CRAWLEY 6009, Australia ¹³³Uppsala University, Department of Immunology, Genetics & Pathology, SciLifeLab, Rudbeck Laboratory, SE-751 85, Uppsala, Sweden ¹³⁴Department of Haematology, University of Cambridge, Cambridge CB2 0PT, UK ¹³⁵NHS Blood and Transplant, Cambridge CB2 0PT, UK ¹³⁶Department of Medicine, University of Oulo, Oulo, Finland ¹³⁷Department of Medicine, Northwestern University Feinberg School of Medicine, Chicago, IL 60611, USA ¹³⁸Unit of Periodontology, Department of Restorative Dentistry, Periodontology and Endodontology, University Medicine Greifswald, D-17475 Greifswald, Germany ¹³⁹Department of Internal Medicine I, Ulm University Medical Centre, D-89081 Ulm, Germany ¹⁴⁰Institute of Human Genetics, Helmholtz Zentrum München - German Research Center for Environmental Health, D-85764 Neuherberg, Germany ¹⁴¹Department of Medical Sciences, Cardiovascular Epidemiology, Uppsala University, Uppsala 75185, Sweden ¹⁴²Centre for Bone and Arthritis Research, Department of Internal Medicine and Clinical Nutrition, Institute of Medicine, Sahlgrenska Academy, University of

Gothenburg, Gothenburg 413 45, Sweden ¹⁴³The Genetics of Obesity and Related Metabolic Traits Program, The Icahn School of Medicine at Mount Sinai, New York, NY 10029, USA ¹⁴⁴Steno Diabetes Center A, S, Gentofte DK-2820, Denmark ¹⁴⁵Service of Nephrology, Department of Medicine, Lausanne University Hospital (CHUV), Lausanne 1005, Switzerland ¹⁴⁶School of Social and Community Medicine, University of Bristol, Bristol BS8 2BN, UK ¹⁴⁷Tropical Metabolism Research Unit, Tropical Medicine Research Institute, The University of the West Indies, Mona, Kingston 7, Jamaica ¹⁴⁸Global Health Institute, Department of Life Sciences, École Polytechnique Fédérale de Lausanne, Lausanne, Switzerland ¹⁴⁹Institute of Microbiology, University Hospital and University of Lausanne, Lausanne 1011, Switzerland ¹⁵⁰The Center for Observational Research, Amgen, Inc., Thousand Oaks, CA 91320, USA ¹⁵¹Center for Evidence-based Healthcare, University Hospital Carl Gustav Carus, Technische Universität Dresden, D-01307 Dresden, Germany ¹⁵²Department of Medicine I, University Hospital Grosshadern, Ludwig-Maximilians-Universität, D-81377 Munich, Germany ¹⁵³Institute of Medical Informatics, Biometry and Epidemiology, Chair of Genetic Epidemiology, Ludwig-Maximilians-Universität, D-85764 Neuherberg, Germany ¹⁵⁴Deutsches Forschungszentrum für Herz-Kreislaufkrankungen (DZHK) (German Research Centre for Cardiovascular Research), Munich Heart Alliance, D-80636 Munich, Germany ¹⁵⁵Department of Respiratory Medicine, Sir Charles Gairdner Hospital, NEDLANDS, Western Australia 6009, Australia ¹⁵⁶Department of Epidemiology and Biostatistics, EMGO Institute for Health and Care Research, VU University Medical Center, Amsterdam, The Netherlands ¹⁵⁷Department of Internal Medicine, Division of Endocrinology and Metabolism, Medical University of Graz, 8036 Graz, Austria ¹⁵⁸Diabetology-Endocrinology-Nutrition, AP-HP, Bichat Hospital, F-75018 Paris, France ¹⁵⁹INSERM, U872, Centre de Recherche des Cordeliers, F-75006 Paris, France ¹⁶⁰Paris Diderot University, F-75018 Paris, France ¹⁶¹Clinical Institute of Medical and Chemical Laboratory Diagnostics, Medical University of Graz, Graz 8036, Austria ¹⁶²Department of Preventive Medicine, Keck School of Medicine, University of Southern California, Los Angeles, CA, USA ¹⁶³Deutsches Herzzentrum München, Technische Universität München, D-80636 Munich, Germany ¹⁶⁴National Cancer Institute, Bethesda, MD, USA ¹⁶⁵Department of Sociology, University of Helsinki, Helsinki FI-00014, Finland ¹⁶⁶EMGO Institute for Health and Care Research, VU University, 1081BT Amsterdam, The Netherlands ¹⁶⁷Department of Psychiatry, Neuroscience Campus, VU University Amsterdam, Amsterdam, The Netherlands ¹⁶⁸Icelandic Heart Association, Kopavogur 201, Iceland ¹⁶⁹University of Iceland, Reykjavik 101, Iceland ¹⁷⁰Molecular & Cellular Therapeutics, Royal College of Surgeons in Ireland, 123 St Stephens Green, Dublin 2, Ireland ¹⁷¹Institute of Cardiovascular and Medical Sciences, Faculty of Medicine, University of Glasgow, Glasgow G12 8TA, UK ¹⁷²Department of Medical Sciences, Molecular Medicine, Uppsala University, Uppsala 75144, Sweden ¹⁷³Department of Public Health Sciences, Stritch School of Medicine, Loyola University of Chicago, Maywood, IL 61053, USA ¹⁷⁴deCODE Genetics, Amgen inc., Reykjavik 101, Iceland ¹⁷⁵Department of Oology, University of Cambridge, Cambridge CB2 0QQ, UK

¹⁷⁶Department of Internal Medicine section of Geriatrics, Academic Medical Center, Amsterdam, The Netherlands ¹⁷⁷Department of Child and Adolescent Psychiatry, Psychology, Erasmus University Medical Centre, 3000 CB Rotterdam, The Netherlands ¹⁷⁸Department for Health Evidence, Radboud University Medical Centre, 6500 HB Nijmegen, The Netherlands ¹⁷⁹Department of Genetics, Radboud University Medical Centre, 6500 HB Nijmegen, The Netherlands ¹⁸⁰Department of Clinical Chemistry, Ulm University Medical Centre, D-89081 Ulm, Germany ¹⁸¹Deutsches Forschungszentrum für Herz-Kreislaferkrankungen (DZHK) (German Research Centre for Cardiovascular Research), partner site Hamburg/Lubeck/Kiel, Lubeck, Germany ¹⁸²Institut für Integrative und Experimentelle Genomik, Universität zu Lübeck, D-23562 Lübeck, Germany ¹⁸³Department of Community Medicine, Faculty of Health Sciences, UiT The Arctic University of Tromsø, Tromsø, Norway ¹⁸⁴MRC Unit for Lifelong Health and Ageing at UCL, London WC1B 5JU, UK ¹⁸⁵Department of Epidemiology and Public Health, EA3430, University of Strasbourg, Faculty of Medicine, Strasbourg, France ¹⁸⁶Department of Internal Medicine, University Medical Center Groningen, University of Groningen, 9700RB Groningen, The Netherlands ¹⁸⁷Pathology and Laboratory Medicine, The University of Western Australia, Western Australia 6009, Australia ¹⁸⁸Cedars-Sinai Diabetes and Obesity Research Institute, Los Angeles, CA, USA ¹⁸⁹Department of Prosthetic Dentistry, Gerostomatology and Dental Materials, University Medicine Greifswald, D-17475 Greifswald, Germany ¹⁹⁰Biological Psychology, VU University Amsterdam, 1081BT Amsterdam, The Netherlands ¹⁹¹Institute of Social and Preventive Medicine (IUMSP), Centre Hospitalier Universitaire Vaudois and University of Lausanne, Lausanne, Switzerland ¹⁹²Ministry of Health, Victoria, Republic of Seychelles ¹⁹³Laboratory Medicine, Hospital of Desio, department of Health Sciences, University of Milano, Bicocca, Italy ¹⁹⁴Clinical Pharmacology Unit, University of Cambridge, Addenbrooke's Hospital, Hills Road, Cambridge CB2 2QQ, UK ¹⁹⁵Clinical Pharmacology and Barts and The London Genome Centre, William Harvey Research Institute, Barts and The London School of Medicine and Dentistry, Queen Mary University of London, Charterhouse Square, London EC1M 6BQ, UK ¹⁹⁶Center for Human Genetics Research, Vanderbilt University Medical Center, Nashville TN 37203, USA ¹⁹⁷Department of Molecular Physiology and Biophysics, Vanderbilt University, Nashville, TN 37232, USA ¹⁹⁸Department of Biostatistics, Boston University School of Public Health, Boston, MA 02118, USA ¹⁹⁹Department of Public Health and Primary Care, University of Cambridge, Cambridge, UK ²⁰⁰Division of Cardiovascular Epidemiology, Institute of Environmental Medicine, Karolinska Institutet, Stockholm, Sweden, Stockholm 17177, Sweden ²⁰¹Julius Center for Health Sciences and Primary Care, University Medical Center Utrecht, 3584 CX Utrecht, The Netherlands ²⁰²Clinic of Cardiology, West-German Heart Centre, University Hospital Essen, Essen, Germany ²⁰³Department of General Practice and Primary Health Care, University of Helsinki, FI-00290 Helsinki, Finland ²⁰⁴Unit of General Practice, Helsinki University Central Hospital, Helsinki 00290, Finland ²⁰⁵Department of Internal Medicine, University of Pisa, Pisa, Italy ²⁰⁶CNR Institute of Clinical Physiology, University of Pisa, Pisa, Italy ²⁰⁷Department of

Cardiology, Toulouse University School of Medicine, Rangueil Hospital, Toulouse, France ²⁰⁸Robertson Center for Biostatistics, University of Glasgow, Glasgow, UK ²⁰⁹NorthShore University HealthSystem, Evanston, IL, University of Chicago, Chicago, IL, USA ²¹⁰Service of Therapeutic Education for Diabetes, Obesity and Chronic Diseases, Geneva University Hospital, Geneva CH-1211, Switzerland ²¹¹Vanderbilt University School of Medicine, Department of Medicine, Pharmacology, Pathology, Microbiology and Immunology, Nashville, Tennessee, USA ²¹²Leeds MRC Medical Bioinformatics Centre, University of Leeds, UK ²¹³Institute of Biomedical & Clinical Science, University of Exeter, Barrack Road, Exeter, EX2 5DW ²¹⁴Department of Psychiatry, Washington University School of Medicine, St. Louis, MO 63110, USA ²¹⁵Center for Biomedicine, European Academy Bozen, Bolzano (EURAC), Bolzano 39100, Italy ²¹⁶Affiliated Institute of the University of Lübeck, D-23562 Lübeck, Germany ²¹⁷Division of Genomic Medicine, National Human Genome Research Institute, National Institutes of Health, Bethesda, MD, USA ²¹⁸Institute of Cardiovascular Science, University College London, WC1E 6BT, UK ²¹⁹Department of Vascular Medicine, Academic Medical Center, Amsterdam, The Netherlands ²²⁰Centre for Cardiovascular Genetics, Institute Cardiovascular Sciences, University College London, London WC1E 6JJ, UK ²²¹Cardiovascular Genetics Division, Department of Internal Medicine, University of Utah, Salt Lake City, Utah 84108, USA ²²²School of Population Health and Sansom Institute for Health Research, University of South Australia, Adelaide 5000, Australia ²²³South Australian Health and Medical Research Institute, Adelaide, Australia ²²⁴Centre for Paediatric Epidemiology and Biostatistics, UCL Institute of Child Health, London WC1N 1EH, UK ²²⁵National Institute for Health and Welfare, FI-90101 Oulu, Finland ²²⁶MRC Health Protection Agency (HPE) Centre for Environment and Health, School of Public Health, Imperial College London, UK ²²⁷Unit of Primary Care, Oulu University Hospital, FI-90220 Oulu, Finland ²²⁸Biocenter Oulu, University of Oulu, FI-90014 Oulu, Finland ²²⁹Institute of Health Sciences, FI-90014 University of Oulu, Finland ²³⁰Hjelt Institute Department of Public Health, University of Helsinki, FI-00014 Helsinki, Finland ²³¹Department of Forensic Molecular Biology, Erasmus MC, 3015GE Rotterdam, The Netherlands ²³²UKCRC Centre of Excellence for Public Health (NI), Queens University of Belfast, Northern Ireland ²³³Faculty of Medicine, Institute of Health Sciences, University of Oulu, Oulu, Finland ²³⁴Unit of General Practice, Oulu University Hospital, Oulu, Finland ²³⁵Department of Urology, Radboud University Medical Centre, 6500 HB Nijmegen, The Netherlands ²³⁶Imperial College Healthcare NHS Trust, London W12 0HS, UK ²³⁷National Heart and Lung Institute, Imperial College, London W12 0NN, UK ²³⁸Department of Epidemiology and Public Health, UCL London, WC1E 6BT, UK ²³⁹Department of Medicine, Kuopio University Hospital and University of Eastern Finland, FI-70210 Kuopio, Finland ²⁴⁰Department of Physiology, Institute of Biomedicine, University of Eastern Finland, Kuopio Campus, Kuopio, Finland ²⁴¹Department of Clinical Physiology and Nuclear Medicine, Kuopio University Hospital and University of Eastern Finland, Kuopio, Finland ²⁴²Department of Clinical Chemistry, Fimlab Laboratories and School of

Medicine University of Tampere, FI-33520 Tampere, Finland ²⁴³Department of Health Sciences, University of Milano, I 20142, Italy ²⁴⁴Fondazione Filarete, Milano I 20139, Italy ²⁴⁵Division of Nephrology and Dialysis, San Raffaele Scientific Institute, Milano I 20132, Italy ²⁴⁶Università Vita-Salute San Raffaele, Milano I 20132, Italy ²⁴⁷Institut Universitaire de Cardiologie et de Pneumologie de Québec, Faculty of Medicine, Laval University, Quebec, QC G1V 0A6, Canada ²⁴⁸Institute of Nutrition and Functional Foods, Laval University, Quebec, QC G1V 0A6, Canada ²⁴⁹Department of Biostatistics, University of Washington, Seattle, WA 98195, USA ²⁵⁰Department of Surgery, University Medical Center Utrecht, 3584 CX Utrecht, The Netherlands ²⁵¹Department of Biostatistics, University of Liverpool, Liverpool L69 3GA, UK ²⁵²Department of Pediatrics, University of Iowa, Iowa City, Iowa IA 52242, USA ²⁵³Institute of Epidemiology II, Helmholtz Zentrum München - German Research Center for Environmental Health, Neuherberg, Germany, D-85764 Neuherberg, Germany ²⁵⁴Department of Neurology, General Central Hospital, Bolzano 39100, Italy ²⁵⁵Department of Nutrition, Harvard School of Public Health, Boston, Massachusetts, USA ²⁵⁶Department of Clinical Physiology and Nuclear Medicine, Turku University Hospital, FI-20521 Turku, Finland ²⁵⁷Research Centre of Applied and Preventive Cardiovascular Medicine, University of Turku, FI-20521 Turku, Finland ²⁵⁸Human Genomics Laboratory, Pennington Biomedical Research Center, Baton Rouge, LA 70808, USA ²⁵⁹Center for Systems Genomics, The Pennsylvania State University, University Park, PA 16802, USA ²⁶⁰Croatian Centre for Global Health, Faculty of Medicine, University of Split, 21000 Split, Croatia ²⁶¹Department of Cardiovascular Sciences, University of Leicester, Glenfield Hospital, Leicester LE3 9QP, UK ²⁶²National Institute for Health Research (NIHR) Leicester Cardiovascular Biomedical Research Unit, Glenfield Hospital, Leicester, LE3 9QP, UK ²⁶³South Carelia Central Hospital. 53130 Lappeenranta. Finland ²⁶⁴Paul Langerhans Institute Dresden, German Center for Diabetes Research (DZD), Dresden, Germany ²⁶⁵International Centre for Circulatory Health, Imperial College London, London W2 1PG, UK ²⁶⁶Program for Personalized and Genomic Medicine, and Division of Endocrinology, Diabetes and Nutrition, University of Maryland School of Medicine, Baltimore, MD 21201, USA ²⁶⁷Geriatric Research and Education Clinical Center, Veterans Administration Medical Center, Baltimore, MD 21201, USA ²⁶⁸HUCH Heart and Lungcenter, Department of Medicine, Helsinki University Central Hospital, FI-00290 Helsinki, Finland ²⁶⁹Université de Montréal, Montreal, Quebec H1T 1C8, Canada ²⁷⁰Department of Kinesiology, Laval University, Quebec, QC G1V 0A6, Canada ²⁷¹Dipartimento di Scienze Farmacologiche e Biomolecolari, Università di Milano & Centro Cardiologico Monzino, IRCCS, Milan 20133, Italy ²⁷²Department of Food Science and Nutrition, Laval University, Quebec, QC G1V 0A6, Canada ²⁷³The electronic medical records and genomics (eMERGE) consortium ²⁷⁴Myocardial Infarction Genetics (MIGen) Consortium ²⁷⁵Membership to this consortium is provided below ²⁷⁶Population Architecture using Genomics and Epidemiology Consortium ²⁷⁷The LifeLines Cohort Study, University of Groningen, University Medical Center Groningen, Groningen, The Netherlands ²⁷⁸Institut Pasteur de Lille; INSERM, U744; Université de Lille 2;

F-59000 Lille, France ²⁷⁹Department of Cardiology, Division Heart and Lungs, University Medical Center Utrecht, 3584 CX Utrecht, The Netherlands ²⁸⁰Durrer Center for Cardiogenetic Research, Interuniversity Cardiology Institute Netherlands-Netherlands Heart Institute, 3501 DG Utrecht, The Netherlands ²⁸¹Lee Kong Chian School of Medicine, Imperial College London and Nanyang Technological University, Singapore, 637553 Singapore, Singapore ²⁸²Health Science Center at Houston, University of Texas, Houston, TX, USA ²⁸³Department of Medicine, Division of Genetics, Brigham and Women's Hospital, Harvard Medical School, Boston, MA 02115, USA ²⁸⁴Department of Epidemiology, University Medical Center Utrecht, Utrecht, The Netherlands ²⁸⁵Lund University Diabetes Centre and Department of Clinical Science, Diabetes & Endocrinology Unit, Lund University, Malmö 221 00, Sweden ²⁸⁶Harvard School of Public Health, Department of Epidemiology, Harvard University, Boston, MA 2115, USA ²⁸⁷Interuniversity Cardiology Institute of the Netherlands (ICIN), Utrecht, the Netherlands ²⁸⁸Albert Einstein College of Medicine. Department of epidemiology and population health, Belfer 1306, NY 10461, USA ²⁸⁹Center for Human Genetics, Division of Public Health Sciences, Wake Forest School of Medicine, Winston-Salem, NC 27157, USA ²⁹⁰Synlab Academy, Synlab Services GmbH, Mannheim, Germany ²⁹¹Department of Clinical Genetics, Erasmus University Medical Center, Rotterdam, The Netherlands ²⁹²Harvard Medical School, Boston, MA 02115, USA ²⁹³Institute for Translational Genomics and Population Sciences, Los Angeles BioMedical Research Institute at Harbor-UCLA Medical Center, Torrance, CA, USA ²⁹⁴Finnish Diabetes Association, Kirjoniementie 15, FI-33680 Tampere, Finland ²⁹⁵Pirkanmaa Hospital District, Tampere, Finland ²⁹⁶Center for Non-Communicable Diseases, Karachi, Pakistan ²⁹⁷Department of Medicine, University of Pennsylvania, Philadelphia, USA ²⁹⁸Laboratory of Genetics, National Institute on Aging, Baltimore, MD 21224, USA ²⁹⁹Instituto de Investigacion Sanitaria del Hospital Universitario LaPaz (IdiPAZ), Madrid, Spain ³⁰⁰Diabetes Research Group, King Abdulaziz University, Jeddah, Saudi Arabia ³⁰¹Centre for Vascular Prevention, Danube-University Krems, 3500 Krems, Austria ³⁰²Department of Public Health and Clinical Nutrition, University of Eastern Finland, Finland ³⁰³Research Unit, Kuopio University Hospital, Kuopio, Finland ³⁰⁴Institute of Cellular Medicine, Newcastle University, Newcastle NE1 7RU, UK ³⁰⁵Institute of Medical Informatics, Biometry and Epidemiology, Chair of Epidemiology, Ludwig-Maximilians-Universität, D-85764 Munich, Germany ³⁰⁶Klinikum Grosshadern, D-81377 Munich, Germany ³⁰⁷Institute of Epidemiology I, Helmholtz Zentrum München - German Research Center for Environmental Health, Neuherberg, Germany, D-85764 Neuherberg, Germany ³⁰⁸Department of Pulmonology, University Medical Center Utrecht, Utrecht, The Netherlands ³⁰⁹King Abdulaziz University, Jeddah 21589, Saudi Arabia ³¹⁰Department of Internal Medicine, Division of Gastroenterology, and Department of Computational Medicine and Bioinformatics, University of Michigan, Ann Arbor, MI 48109 ³¹¹Faculty of Medicine, University of Iceland, Reykjavik 101, Iceland ³¹²University of Cambridge Metabolic Research Laboratories, Institute of Metabolic Science, Addenbrooke's Hospital, Cambridge CB2 0QQ, UK ³¹³NIHR Cambridge

Biomedical Research Centre, Institute of Metabolic Science, Addenbrooke's Hospital, Cambridge CB2 0QQ, UK ³¹⁴Carolina Center for Genome Sciences, University of North Carolina at Chapel Hill, Chapel Hill, NC 27599, USA ³¹⁵Division of Population Health Sciences & Education, St George's, University of London, London SW17 0RE, UK ³¹⁶Service of Medical Genetics, CHUV University Hospital, Lausanne, Switzerland ³¹⁷Oxford NIHR Biomedical Research Centre, Oxford University Hospitals NHS Trust, Oxford, OX3 7LJ, UK ³¹⁸Department of Internal Medicine, Division of Cardiovascular Medicine, University of Michigan, Ann Arbor, MI, USA ³¹⁹Department of Computational Medicine and Bioinformatics, University of Michigan, Ann Arbor, MI, USA ³²⁰Department of Human Genetics, University of Michigan, Ann Arbor, MI, USA ³²¹Harvard School of Public Health, Department of Biostatistics, Boston, MA 02115, USA ³²²The Mindich Child Health and Development Institute, Icahn School of Medicine at Mount Sinai, New York, NY 10029, USA ³²³Biosciences Research Division, Department of Primary Industries, Victoria 3083, Australia ³²⁴Department of Food and Agricultural Systems, University of Melbourne, Victoria 3010, Australia

Acknowledgments

A full list of acknowledgments appears in the Supplementary Note.

References

1. Fisher RA. The correlation between relatives on the supposition of Mendelian inheritance. *Trans R Soc.* 1918; 52:399–433.
2. Silventoinen K, et al. Heritability of adult body height: a comparative study of twin cohorts in eight countries. *Twin Res.* 2003; 6:399–408. [PubMed: 14624724]
3. Visscher PM, et al. Assumption-free estimation of heritability from genome-wide identity-by-descent sharing between full siblings. *PLoS Genet.* 2006; 2:e41. [PubMed: 16565746]
4. Yang J, et al. Common SNPs explain a large proportion of the heritability for human height. *Nat Genet.* 2010; 42:565–9. [PubMed: 20562875]
5. Yang J, et al. Genome partitioning of genetic variation for complex traits using common SNPs. *Nat Genet.* 2011; 43:519–25. [PubMed: 21552263]
6. Lango Allen H, et al. Hundreds of variants clustered in genomic loci and biological pathways affect human height. *Nature.* 2010; 467:832–8. [PubMed: 20881960]
7. Yang J, et al. Conditional and joint multiple-SNP analysis of GWAS summary statistics identifies additional variants influencing complex traits. *Nat Genet.* 2012; 44:369–75. S1–3. [PubMed: 22426310]
8. Yang J, Lee SH, Goddard ME, Visscher PM. GCTA: a tool for genome-wide complex trait analysis. *Am J Hum Genet.* 2011; 88:76–82. [PubMed: 21167468]
9. Voight BF, et al. The metabochip, a custom genotyping array for genetic studies of metabolic, cardiovascular, and anthropometric traits. *PLoS Genet.* 2012; 8:e1002793. [PubMed: 22876189]
10. Yang J, et al. Genomic inflation factors under polygenic inheritance. *Eur J Hum Genet.* 2011; 19:807–12. [PubMed: 21407268]
11. Altshuler DM, et al. Integrating common and rare genetic variation in diverse human populations. *Nature.* 2010; 467:52–8. [PubMed: 20811451]
12. Lui JC, et al. Synthesizing genome-wide association studies and expression microarray reveals novel genes that act in the human growth plate to modulate height. *Hum Mol Genet.* 2012; 21:5193–201. [PubMed: 22914739]

13. Segre AV, Groop L, Mootha VK, Daly MJ, Altshuler D. Common inherited variation in mitochondrial genes is not enriched for associations with type 2 diabetes or related glycaemic traits. *PLoS Genet.* 2010; 6
14. Raychaudhuri S, et al. Identifying relationships among genomic disease regions: predicting genes at pathogenic SNP associations and rare deletions. *PLoS Genet.* 2009; 5:e1000534. [PubMed: 19557189]
15. de Pontual L, et al. Germline deletion of the miR-17 approximately 92 cluster causes skeletal and growth defects in humans. *Nat Genet.* 2011; 43:1026–30. [PubMed: 21892160]
16. Morales J, et al. Homozygous mutations in ADAMTS10 and ADAMTS17 cause lenticular myopia, ectopia lentis, glaucoma, spherophakia, and short stature. *Am J Hum Genet.* 2009; 85:558–68. [PubMed: 19836009]
17. Li Y, et al. Temtamy preaxial brachydactyly syndrome is caused by loss-of-function mutations in chondroitin synthase 1, a potential target of BMP signaling. *Am J Hum Genet.* 2010; 87:757–67. [PubMed: 21129728]
18. Tian J, et al. Loss of CHSY1, a secreted FRINGE enzyme, causes syndromic brachydactyly in humans via increased NOTCH signaling. *Am J Hum Genet.* 2010; 87:768–78. [PubMed: 21129727]
19. Visscher PM. Sizing up human height variation. *Nat Genet.* 2008; 40:489–90. [PubMed: 18443579]
20. Goldstein DB. Common genetic variation and human traits. *N Engl J Med.* 2009; 360:1696–8. [PubMed: 19369660]
21. Nüsslein-Volhard C, Wieschaus E, Kluding H. Mutations affecting the pattern of the larval cuticle in *Drosophila melanogaster*: zygotic loci on the second chromosome. *Roux's Arch Dev Biol.* 1984; 193:267–282.
22. Willer CJ, Li Y, Abecasis GR. METAL: fast and efficient meta-analysis of genomewide association scans. *Bioinformatics.* 2010; 26:2190–1. [PubMed: 20616382]
23. Kang HM, et al. Variance component model to account for sample structure in genome-wide association studies. *Nat Genet.* 2010; 42:348–54. [PubMed: 20208533]
24. Winkler TW, et al. Quality control and conduct of genome-wide association meta-analyses. *Nat Protoc.* 2014; 9:1192–212. [PubMed: 24762786]
25. Purcell S, et al. PLINK: a tool set for whole-genome association and population-based linkage analyses. *Am J Hum Genet.* 2007; 81:559–75. [PubMed: 17701901]
26. Price AL, et al. Principal components analysis corrects for stratification in genome-wide association studies. *Nat Genet.* 2006; 38:904–9. [PubMed: 16862161]
27. Lynch, M.; Walsh, B. *Genetics and Analysis of Quantitative Traits.* Sinauer Associates, Incorporated; 1998.
28. Gusev A, et al. Quantifying missing heritability at known GWAS loci. *PLoS Genet.* 2013; 9:e1003993. [PubMed: 24385918]
29. Geller F, et al. Genome-wide association analyses identify variants in developmental genes associated with hypospadias. *Nat Genet.* 2014
30. Cvejic A, et al. SMIM1 underlies the Vel blood group and influences red blood cell traits. *Nat Genet.* 2013; 45:542–5. [PubMed: 23563608]
31. Lage K, et al. A human phenome-interactome network of protein complexes implicated in genetic disorders. *Nat Biotechnol.* 2007; 25:309–16. [PubMed: 17344885]
32. Croft D, et al. Reactome: a database of reactions, pathways and biological processes. *Nucleic Acids Res.* 2011; 39:D691–7. [PubMed: 21067998]
33. Kanehisa M, Goto S, Sato Y, Furumichi M, Tanabe M. KEGG for integration and interpretation of large-scale molecular data sets. *Nucleic Acids Res.* 2012; 40:D109–14. [PubMed: 22080510]

AUTHOR CONTRIBUTIONS

Steering Committee Overseeing the Consortium

G.R.A., T.L.A., I.B., S.I.B., M. Boehnke, I.B.B., P.D., C.S.F., T.M.F, L.C.G., I.M.H., J.N.H., D.J.H., E.I., R.C.K., R.J.F.L., M.I.M., K.L. Mohlke, K.E.N., J.R.O., D. Schlessinger, D.P.S., U.T., C.M.v.D.

Writing Group (wrote, edited and commented on manuscript)

S.I.B., D.I.C., A.Y.C., T.E., T.M.F., J.N.H., E.I., T.H.P., S.V., P.M.V., M.N.W., A.R.W., J.Y.

Data preparation group (checked and prepared data from contributing cohorts for meta-analyses)

D. C. Croteau-Chonka, F.R.D., T.E., T. Fall, T. Ferreira, S.G., I.M.H., Z.K., C.M.L., A.E.L., R.J.F.L., J. Luan, R.M., J.C.R., A. Scherag, E.K.S., S.V., T.W.W., A.R.W., T. Workalemahu.

Height meta-analyses group (GWAS and Metabochip) (analyses specific to the manuscript)

T.E., T.M.F. (chair), S.V., P. M. V., A.R.W. (lead - meta-analyses), J.Y. (lead - joint effects and approximate conditional analyses).

Mixed linear model analyses

J.S.B., M. Boehnke, D.I.C., A.Y.C., K.E., T.M.F. (chair), S.G., J.N.H., J.H.Z., E.I., A.U.J., Z.K., R.J.F.L., J. Luan, A. Metspalu, E.M., J.R.O., A.L.P., A.G.U., S.V., P.M.V., M.N.W., A.R.W. (lead), J.Y.

Large lambda group

T.M.F., J.N.H., P.M.V., M.E. Goddard, A.L.P, M.N.W., J.Y., G.R.A., H.M.K.

Family transmission analyses

G.R.A., N.A., I.B.B., Y.D., C.M.v.D., J.N.H. (chair), E.I., J.R.O., E.P., S.V. (lead), P.M.V., J.Y.

Variance, heritability, and prediction analyses

K.E., M.E.G., M.I.M., A.A.E.V., P.M.V. (chair), M.N.W., A.R.W., J.Y. (lead)

Biological Enrichment and Pathway analyses

T.E. (lead - biological enrichment analyses), J.N.H. (chair), T.H.P. (lead - pathway analyses).

ENCODE working group

M.L.B., G.L. (chair), K.S.L.

Gene expression (eQTL) working group

T.E. (chair), L. Franke, J. Karjalainen, J.C.L., A. Metspalu, E.R., J.E.P., H. Westra (lead)

Other Contributions

(DEPICT) R.F., L. Franke, J. Karjalainen, T.H.P.

Project Design, Management and Coordination of Contributing Studies***Previous GWAS studies***

(AGES) V. Gudnason, T.B.H.; (AMISH) A.R.S., (ARIC) K.E.N.; (B58C T1D CONTROLS) D.P.S.; (B58C WTCCC) D.P.S.; (BRIGHT) M.J.B., N.J.S.; (CAPS) E.I.; (CHS) J.I.R.; (COLAUS) J.S.B. S. Bergmann; (CROATIA-Vis) I.R.; (deCODE) K. Stefansson, U.T.; (DGI) L.C.G.; (EGCUT) A. Metspalu; (EPIC-Norfolk) N.J.W.; (FENLAND) N.J.W.; (Finnish Twin Cohort) J. Kaprio, K. Silventoinen; (FRAM) L.A.C.; (FUSION) R.N.B., M. Boehnke; (GerMIFS I) J.E., C. Hengstenberg; (GerMIFS II) H. Schunkert; (H2000) S. Koskinen; (HFPS) D.J.H.; (KORA S4) C.G., A.P.; (MICROS) A.A.H., P.P.P.; (NFBC66) M.J., S. Sebert; (NHS) D.J.H.; (NSPHS) U.G.; (NTRNESDA) D.I.B.; (ORCADES) H.C.; (PLCO) S.I.B., S.J.C.; (RSI) C.M.v.D., A. Hofman, M. Kayser, F. Rivadeneira, A.G.U.; (RUNMC) L.A.K.; (SardiNIA) G.R.A.; (SASBAC) E.I.; (SHIP) R.B., H.V.; (WGHS) P.M.R.; (WTCCC-CAD) A.S.H., N.J.S.; (WTCCC-T2D) C.M.L., M.I.M., (Young Finns Study (YFS)) T.L., O.T.R.

New GWAS studies

(ASCOT) M.J.C., P.S.; (ATCG) P.I.W.d.B., D.W.H.; (Athero-Express Biobank Studies) F.W.A., H.M.d.R., F.L.M., G.P.; (B-PROOF) R.D., L.C.P.G.M.d.G., N.M.v.S., N.v.d.V.; (BLSA) L. Ferrucci; (CLHNS) K.L. Mohlke, (COROGENE) M.P., J. Sinisalo; (DESIR) S. Cauchi, P.F., (DNBS) M. Melbye, J.C.M. (EGCUT) A.Metspalu, (EMERGE) M.G.H., (ERF) B.A.O., C.M.v.D.; (FamHS) I.B.B., (FINGESTURE) J. Tardif; (GOOD) C.O.; (HBCS) J.G.E.; (Health ABC) T.B.H., Y. Liu; (HERITAGE Family Study) C. Bouchard, D.C.R., M. A. Sarzynski, (InCHIANTI) L. Ferrucci, T.M.F.; (IPM) E.P.B., R.J.F.L., (LLS) P.E. Slagboom; (LOLIPOP) J.C.C., J.S.K.; (MGS) P.V.G.; (NELSON) P.I.W.d.B., P.Z., (PLCO2) S.I.B., S.J.C., (PREVEND) P.v.d.H., (PROCARDIS) H. Watkins, (PROSPER/PHASE) I.F., J.W.J.; (QFS) C. Bouchard, A. Marette, L.P., M.V., (QIMR) A.C.H., N.G.M., G.W.M., (RISC) E.F., T.M.F, A. Golay, M. Walker; (RS II) A. Hofman, M. Kayser, F. Rivadeneira, A.G.U.; (RS III) A. Hofman, M. Kayser, F. Rivadeneira, A.G.U.; (SHIP-TREND) R.B., H.V.; (SORBS) A. Tönjes; (TRAILS) A.J.O., H. Snieder; (TWINGENE) E.I.; (TwinsUK) T.D.S.;

Metabochip studies

(ADVANCE) T.L.A., T.Q.; (AMC-PAS) G.K.H., P.D.; (ARIC) E.B., K.E.N., (B1958C) E.H., C.P.; (BHS) J. Beilby, J. Hui; (CARDIOGENICS) P.D., W.H.O., H. Schunkert; (DESIR) S. Cauchi, P.F.; (DGE DietGeneExpression) B.J.; (DIAGEN) S.R.B., P.E.H.S., (DILGOM) P.J., A.M.J., S. Männistö, M.P., S. Salomaa; (DPS) M.U.; (DR's EXTRA)

T.A.L., R. Rauramaa; (DUNDEE – GoDARTS) C.N.A.P.; (EAS) J.F.P.; (EGCUT) A. Metspalu; (EMIL (SWABIA)) B.O.B., (FBPP) A.C., R.S.C., S.C.H.; (FIN-D2D 2007) S.M.K., T.E.S.; (FUSION 2) F.S.C., J. Saramies, J. Tuomilehto, (GLACIER) P.W.F., (GxE) R.S.C., J.N.H., C.A.M.; (HNR) R.E., P. Hoffmann, S. Moebus, (HUNT 2) K.H.; (IMPROVE) U.d.F., A. Hamsten, S.E.H., E.T.; (KORA S3) T.M., H. Wichmann; (KORA S4) K. Strauch; (Leipzig) M.S.; (LURIC) W.M.; (MEC) C.A. Haiman, L.L.M.; (METSIM) J. Kuusisto, M. Laakso; (MORGAM) P.A., D. Arveiler, P. Brambilla; J.F., F.K., J.V.; (NSHD) D.K.; (PIVUS) E.I.; (PROMIS) J. Danesh, P.D., D. Saleheen; (ScarfSheep) A. Hamsten; (SPT) R.S.C., J.N.H., C.A.M. (STR) E.I., (Tandem) M. Bochud, P. Bovet; (THISEAS) G. Dedoussis, P.D.; (Tromsø) I.N.; (ULSAM) E.I., (WHI) C.K., U.P.; (Whitehall) A.D.H., M. Kivimaki, N.J.W.; (WTCCC-T2D) C.M.L., M.I.M.

Genotyping of Contributing Studies

Previous GWAS studies

(AGES) A.V. Smith; (B58C T1D CONTROLS) W.L.M.; (B58C WTCCC) W.L.M.; (CAPS) H. Grönberg; (CROATIA-Vis) C. Hayward; (EGCUT) M. Nelis; (EPIC-Norfolk) N.J.W.; (FENLAND) N.J.W.; (Finnish Twin Cohort) J. Kaprio; (KORA S3) T.I., M. Müller-Nurasyid; (MICROS) A.A.H; (NFBC66) M.J; (ORCADES) A.F.W.; (PLCO) S.J.C.; (RSI) K.E., C. Medina-Gomez, F. Rivadeneira, A.G.U.; (SASBAC) P. Hall; (SHIP) A. Hannemann, M. Nauck; (WGHS) D.I.C., L.M.R.; (WTCCC-CAD) A.S.H. N.J.S.; (WTCCC-T2D) A.T.H, M.I.M.; (Young Finns Study (YFS)) T.L., O.T.R.

New GWAS studies

(ASCOT) P.B.M.; (ATCG) P.I.W.d.B., D.W.H., P.J.M.; (Athero-Express Biobank Study) S.W.v.d.L.; (CLHNS) D. C. Croteau-Chonka; (DESIR) E.E., S. Lobbens; (EGCUT) T.E., L.M.; (EMERGE) D. C. Crawford, M.G.H.; (ERF) A.I., B.A.O., C.M.v.D.; (FamHS) I.B.B., M.F.F., A.T.K., M.K.W, Q.Z; (GOOD) C.O., M. Lorentzon; (Health ABC) Y. Liu; (HERITAGE Family Study) M. A. Sarzynski; (HYPERGENES) S. Lupoli.; (IPM) E.P.B.; (LifeLines) M.A. Swertz; (LLS) J. Deelen, Q.H.; (LOLIPOP) J.C.C., J.S.K; (NELSON) J. Smolonska; (PLCO2) S.J.C., K.B.J., Z.W.; (PREVEND) P.v.d.H., I.M.L., (PROCARDIS) M.F., A. Goel; (PROSPER/PHASE) J.W.J., D.J.S., S.T.; (QFS) C. Bellis, J. Blangero; (QIMR) A.K.H.; (SHIP-TREND) A. Hannemann, M. Nauck; (RSII) K.E., C. Medina-Gomez, F. Rivadeneira, A.G.U.; (RSIII) K.E., C. Medina-Gomez, F. Rivadeneira, A.G.U.; (TRAILS) M. Bruinenberg, C.A. Hartman; (TWINGENE) A. Hamsten, N.L.P.; (TwinsUK) M. Mangino, A. Moayyeri; (WGHS) D.I.C., L.M.R.

MetaboChip studies

(ADVANCE) D. Absher, T.L.A., T.Q.; (AMCPAS) K. Stirrups; (ARIC) E.B., K.E.N.; (B1958C) N.R.R., C.J.G. T.J.; (BHS) G.M.A., J. Hui; (CARDIOGENICS) K. Stirrups; (DESIR) E.E., S. Lobbens; (DGE DietGeneExpression) B.J.; (DIAGEN) M.A.M.; (DUNDEE - GoDARTS) A.J.B., C.N.A.P., N.W.R.; (EAS)

J.F.W.; (EGCUT) T.E., L.M.; (ELY) N.G.F., C.L., R.J.F.L., K.K.O, R.A.S, N.J.W; (EMIL (SWABIA)) B.O.B.; (EPIC-Norfolk) N.G.F, C.L., R.J.F.L., K.K.O, R.A.S, N.J.W; (FBPP) A.C.; (FENLAND) N.G.F, C.L., R.J.F.L., K.K.O, R.A.S, N.J.W; (FIN-D2D 2007) P.S.C.; (FUSION 2) L.K.; (GLACIER) I.B., (HNR) M.M.N.; (HUNT 2) N.N.; (KORA S3) N.K., M. Waldenberger; (KORA S4) H. Grallert, P.L.; (Leipzig) Y.B., P.K.; (LURIC) M.E.K.; (MEC) C.A. Haiman, L.A.H.; (NSHD) D.K., K.K.O., A.W.; (PIVUS) E.I., C. Berne, L.L., J. Sundström, (PROMIS) K. Stirrups; (STR) N.L.P., (Tandem) G.B.E., M. Maillard, (THISEAS) K. Stirrups; (Tromsø) P.S.C.; (ULSAM) J.Ä., E.I., A. Syvänen; (WHI) C.K., U.P.; (Whitehall) C.L.; (WTCCC-T2D) A.T.H, M.I.M.

Phenotype Coordination of Contributing Studies

Previous GWAS studies

(AMISH) A.R.S. (B58C T1D CONTROLS) D.P.S.; (B58C WTCCC) D.P.S.; (BRIGHT) M.J.B., N.J.S.; (CAPS) H. Grönberg; (CHS) R.C.K.; (CROATIA-Vis) I.R.; (DGI) V. Lyssenko; (EGCUT) A. Metspalu; (EPIC-Norfolk) N.J.W.; (FENLAND) N.J.W.; (Finnish Twin Cohort) J. Kaprio, (KORA S4) A.P.; (NFBC66) M.J.; (NTRNESDA) J.H.S.; (ORCADES) A.F.W.; (PLCO) S.I.B.; (RSI) A. Hofman, F. Rivadeneira, A.G.U.; (SASBAC) P. Hall; (SHIP) M. Dörr, W.H., T.K.; (UKBS-CC) J. Jolley; (WGHS) D.I.C., L.M.R, A.Y.C.; (WTCCC-CAD) A.S.H., N.J.S.; (WTCCC-T2D) A.B., A.T.H.; (Young Finns Study (YFS)) T.L., O.T.R.

New GWAS studies

(ASCOT) M.J.C., P.S., A.V. Stanton; (ATCG) D.W.H.; (Athero-Express Biobank Study) F.L.M., J.E.P.V.; (BLSA) S. Bandinelli; (DESIR) R. Roussel; (DNBC) H.A.B., B.F., F.G., (EGCUT) T.E., A. Metspalu; (eMERGE) J.C.D., A.N.K., (ERF) B.A.O., C.M.v.D.; (FamHS) I.B.B., M.F.F.; (FINGESTURE) J. Junttila; (GOOD) C.O., M. Lorentzon; (HBCS) J.G.E.; (Health ABC) M.E. Garcia, T.B.H., M.A.N.; (HERITAGE Family Study) C. Boucard; (HYPERGENES) P.M.; (InCHIANTI) S. Bandinelli, L. Ferrucci; (IPM) O.G., (LifeLines) S. Scholtens, M.A. Swertz, J.M.V.; (LLS) D.v.H; (LOLIPOP) J.C.C., J.S.K., U.A., L.O., J. Sehmi; (NELSON) P.A.D.J.; (PLCO2) S.I.B.; (PREVEND) S.J.L.B., R.T.G., H.L.H; (PROCARDIS) R. Clarke, R. Collins, M.F., A. Hamsten; (PROSPER/PHASE) J.W.J., I.F., B.M.B.; (QFS) A. Tremblay; (QIMR) A.K.H., A.C.H., P.A.F.M., N.G.M., G.W.M.; (RSII) A. Hofman, Rivadeneira, A.G.U.; (RSIII) A. Hofman, Rivadeneira, A.G.U.; (SORBS) A. Tönjes; (SHIP-TREND) M. Dörr, W.H., T.K.; (TRAILS) C.A. Hartman, R.P.S., F.V.v.O.; (TWINGENE) P.K.E.M., N.L.P.; (TwinsUK) M. Mangino, C. Menni; (WGHS) D.I.C., L.M.R.

Metabochip studies

(ADVANCE) A.S.G., M.A.H., (AMCPAS) J.J.P.K.; (ARIC) E.B.; (B1958C) E.H., C.P.; (BHS) A.L.J., A.W.M.; (DESIR) R. Roussel; (DGE DietGeneExpression) B.J.; I.H.C.; (DIAGEN) J. Gräßler, G.M.; (DPS) J. Lindström; (DR's EXTRA) M.H., (DUNDEE - GoDARTS) A.S.F.D., A.D.M. C.N.A.P.; (EAS) S. McLachlan; (EGCUT) T.E., A. Metspalu; (EMIL (SWABIA)) B.O.B., S. Claudi-Boehm, W. Kratzer, S. Merger, T.S.,

R.W.; (FBPP) R.S.C., S.C.H.; (GLACIER) G. Hallmans; (GxE) T. Forrester, B.O.T.; (HNR) R.E., S. Moebus; (HUNT 2) O.H., (KORA S3) H. Wichmann; (Leipzig) M. Blüher; (MEC) L.R.W.; (METSIM) H.M.S.; (NSHD) D.K.; (PIVUS) C. Berne, E.I., L.L., J. Sundström, (PROMIS) D. Saleheen; (SPT) T. Forrester, B.O.T.; (STR) N.L.P.; (Tandem) M. Bochud, P. Bovet; (THISEAS) S. Kanoni; (Tromsø) T. Wilsgaard; (ULSAM) J.Ä., V. Giedraitis, E.I.; (WHI) C.K., U.P.; (Whitehall) M. Kumari; (WTCCC-T2D) A.B., A.T.H.

Data Analysis

Previous GWAS studies

(AGES) A.V. Smith; (ARIC) K.L. Monda, K.E.N.; (B58C T1D CONTROLS) D.P.S.; (B58C WTCCC) D.P.S.; (CAPS) E.I.; (CHS) R.C.K., B.M.; (COLAUS) S. Bergmann, Z.K.; (CROATIA-Vis) C. Hayward; (deCODE) V. Steinthorsdottir, G.T.; (EGCUT) M. Nelis; (EPIC-Norfolk) J.H.Z.; (FENLAND) J. Luan; (FRAM) L.A.C., N.L.H.; (FUSION) C.J.W.; (GerMIFS II) C.W.; (H2000) N.E.; (HPFS) L.Q.; (NHS) L.Q. (NSPHS) A. Johansson; (PLCO) S.I.B.; (RSI) K.E., C. Medina-Gomez, F. Rivadeneira, A.G.U.; (RUNMC) S.H.V.; (SardinIA) S. Sanna; (SASBAC) E.I.; (SEARCH) J.P.T.; (SHIP) A. Teumer; (WGHS) D.I.C., L.M.R., A.Y.C.; (WTCCC-T2D) A.P.M., T. Ferreira; A. Mahajan, R.M.

New GWAS studies

(ATCG) P.I.W.d.B., P.J.M., S.R.; (Athero-Express Biobank Studies) S.W.v.d.L.; (B-PROOF) S.v.D.; (BHS) M.C.; (BSA) T.T.; (CLHNS) D. C. Croteau-Chonka, (DESIR) S. Cauchi, L.Y., (DNBC) B.F., F.G.; (EGCUT) T.E., K.F., T.H., R.M.; (eMERGE) M.G.H.; (ERF) N.A., A.D.; (FamHS) M.F.F.; (GOOD) C.O., M. Lorentzon; (HBSC) N.E.; (Health ABC) M.A.N.; (HERITAGE Family Study) C. Bouchard, M. A. Sarzynski, D.C.R., T.R., T.K.R., Y.J.S., (HYPERGENES) S. Lupoli; (InCHIANTI) D.P., T.T., A.R.W.; (IPM) J. Jeff, V. Lotay, Y. Lu; (LifeLines) I.M.N., J.V.V.V.; (LLS) M. Beekman, J.J.H.; (LOLIPOP) W.Z.; (MGS) J. Shi, (NELSON) S.R., J.v.S.; (PLCO2) S.I.B., Z.W.; (PREVEND) P.v.d.H., I.M.L., N.V.; (PROCARDIS) A. Goel; (PROSPER/PHASE) I.F., B.M.B., S.T.; (QFS) J. Blangero, L.P.; (QIMR) G. Hemani, D.R.N., J.E.P.; (RISC) D.P., A.R.W.; (RSII) K.E., C. Medina-Gomez, F. Rivadeneira, A.G.U.; (RSIII) K.E., C. Medina-Gomez, F. Rivadeneira, A.G.U.; (SHIP-TREND) A. Teumer; (SORBS) R.M., (TRAILS) H. Snieder; (TWINGENE) E.I., S.G.; (TwinsUK) M. Mangino; (WGHS) D.I.C., L.M.R.

MetaboChip Studies

(ADVANCE) D. Absher, T.L.A., L.L.W.; (AMCPAS) S. Kanoni; (ARIC) S. Buyske, A.E.J., K.E.N.; (B1958C) T. Ferreira; (BHS) D. Anderson; (CARDIOGENICS) S. Kanoni; (DESIR) S. Cauchi, L.Y.; (DGE DietGeneExpression) I.H.C.; (DIAGEN) A.U.J., G.M.; (DILGOM) K.K.; (DUNDEE) T. Ferreira; (EAS) J.L.B., R.M.F.; (EGCUT) T.E., K.F., E.M.; (ELY) J. Luan; (EMIL (SWABIA)) B.O.B.; (EPIC-Norfolk) J. Luan, (FBPP) A.C., G.B.E.; (FENLAND) J. Luan; (GLACIER) F. Renstrom, D. Shungin; (GxE) C.D.P., (HNR) S. Pechlivanis, A. Scherag; (IMPROVE) L. Folkersen, R.J.S.; (KORA S3) J.S.R.; (KORA S4) E.A.; (Leipzig) A. Mahajan, I.P.; (LURIC) G. Delgado, T.B.G., M.E.K., S. Pilz, H. Scharnag; (MEC) U.L., F.R.S.; (METSIM) A. Stancáková; (NSHD) A.W., J. Luan;

(PIVUS) S.G., E.I.; (PROMIS) S. Kanoni; (ScarfSheep) R.J.S.; (SPT) C.D.P. (STR) E.I., S.G.; (TANDEM) G.B.E.; (THISEAS) M. Dimitriou; (ULSAM) S.G., E.I.; (WHI) J. Gong, J. Haessler, M.R.; (Whitehall) J. Luan; (WTCCC-T2D) A.P.M., T. Ferreira; A. Mahajan, R.M.

Author Manuscript

Author Manuscript

Author Manuscript

Author Manuscript

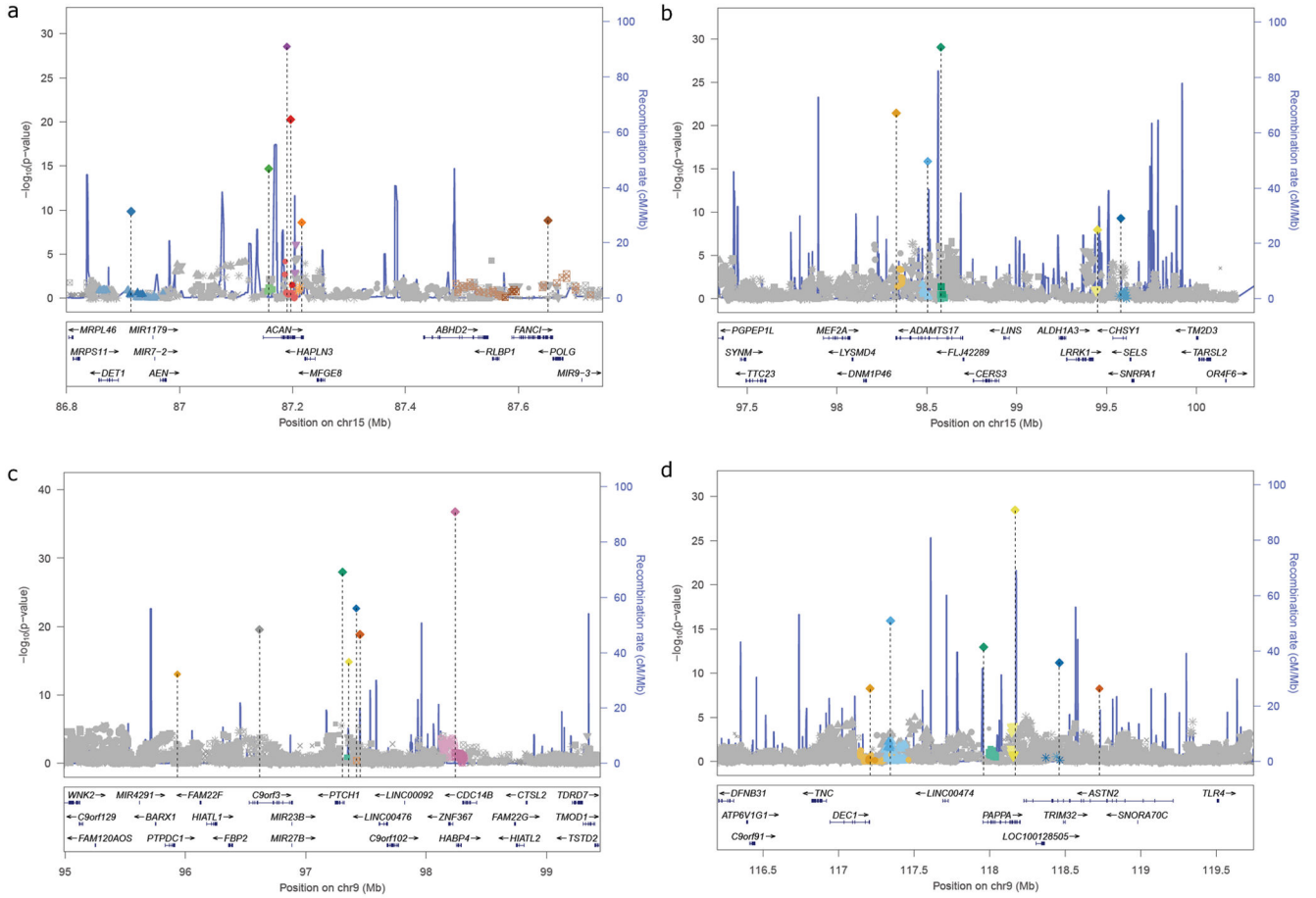


Figure 1. Regional association plots for loci with multiple association signals
 Panels a to d highlight examples of multiple signals after approximate conditional joint multiple-SNP analysis GCTA-COJO analysis. SNPs are shaded and shaped based on the index SNP with which they are in strongest LD ($r^2 > 0.4$). Panels a–c show the majority of signals clustering in and around a single gene (*ACAN*, *ADAMTS17*, *PTCH1*, respectively) whereas panel d shows the multiple signals clustering through proximity.

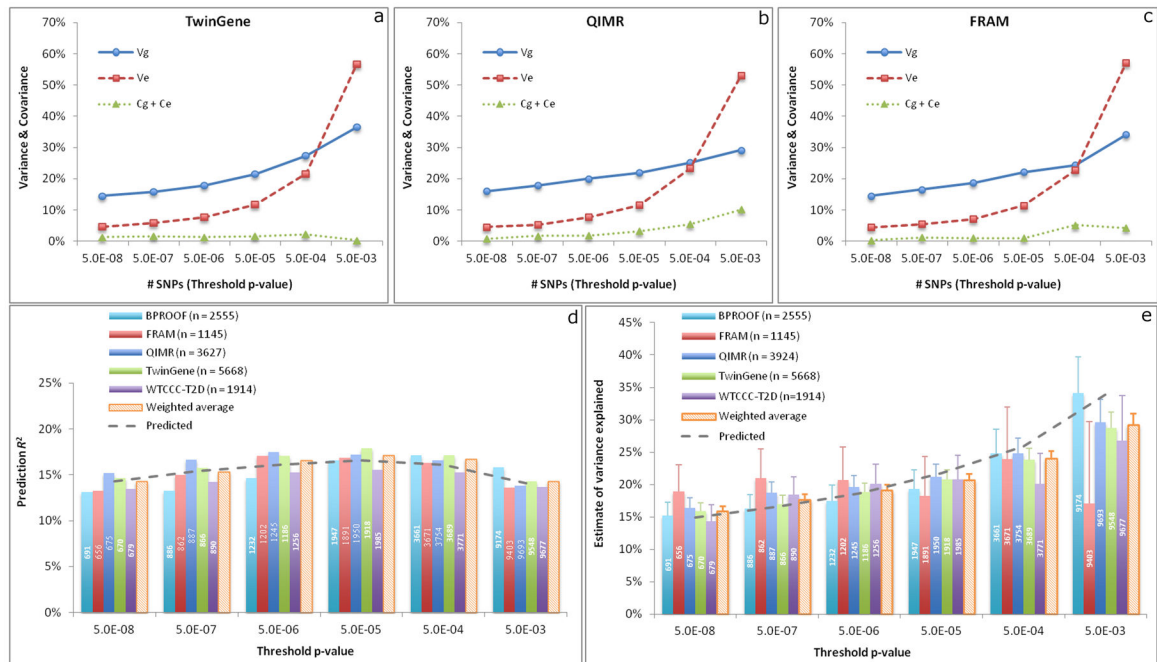


Figure 2. Quantifying the variance explained by height associated SNPs at different levels of significance

The SNPs were selected from the approximate conditional and joint multiple SNPs association analysis using GCTA-COJO analysis with the target cohort being excluded from the meta-analysis. **a, b, c**, Partitioning the variance in the SNP-derived genetic predictor using a within-family analysis. The SNP-based predictor was adjusted by the first 20 PCs. The four variance-covariance components V_g , V_e , C_g and C_e are defined in Online Methods. **d**, Accuracy of predicting phenotype by the genetic predictor in unrelated individuals. The prediction R^2 shown on the y-axis is the squared correlation between phenotype and predictor. The SNP-based predictor was adjusted by the first 20 PCs. The solid line is the average prediction R^2 weighted by sample size over the five cohorts. The dashed line is the prediction accuracy inferred from the within-family prediction analysis (Equation 19 in Online Methods). **e**, The variance explained by the SNPs was estimated by the whole-genome estimation method in GCTA. The phenotype was adjusted by the first 20 PCs. Each error bar represents the standard error of the estimate. The estimates from all the five cohorts (B-PROOF, FRAM, QIMR, TwinGene and WTCCC-T2D) were averaged by the inverse-variance approach. The dashed line is the variance explained inferred from the within-family prediction analysis. In panels **d** and **e**, the number shown in each column is the number of SNPs used in the analysis.

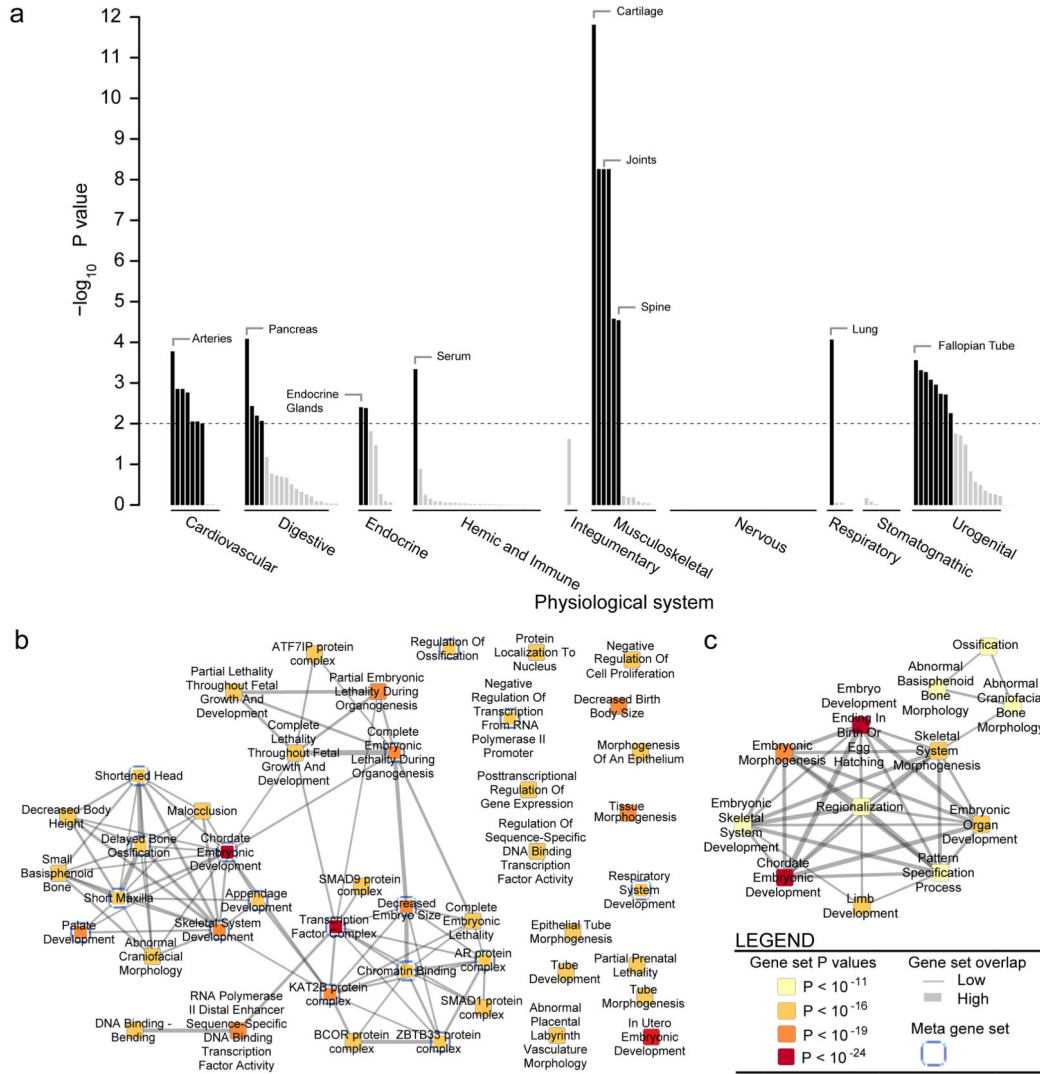


Figure 3. Tissue enrichment combined with pruned gene set network

Genes within genome-wide significant height associated loci enriched for several relevant tissue annotations as well as gene sets. **a**, Genes in associated loci tended to be highly expressed in tissues related to chondrocytes and osteoblasts (cartilage, joints, and spine), and other musculoskeletal, cardiovascular and endocrine tissue-types. The analysis was conducted based on the DEPICT method and 37,427 human microarray samples. Tissue annotations are sorted by physiological system and significance. Significantly enriched ($FDR < 0.05$) tissues are color-coded in black. **b**, Significantly enriched reconstituted gene sets (P -value $< 1 \times 10^{-11}$, $FDR < 1 \times 10^{-5}$) identified by DEPICT. Nodes represent reconstituted gene sets and are color-coded by statistical significance. Edge thickness between nodes is proportional to degree of gene overlap as measured by the *Jaccard* index. Nodes with gene overlap greater than 25% were collapsed into single meta nodes and marked by blue borders. **c**, reconstituted gene sets comprised by the Chordate Embryonic Development meta node,

which represented several gene sets relevant to human height (e.g. ossification, embryonic skeletal system development, and limb development).

Author Manuscript

Author Manuscript

Author Manuscript

Author Manuscript

Table 1
Estimates of variance explained by SNPs selected at different significance levels

The SNPs were selected by an approximate conditional and joint multiple-SNP analysis (GCTA-COJO) of the summary statistics from the meta-analysis. The target cohort for variance estimation was excluded from the meta-analysis.

Threshold	QIMR (<i>n</i> = 3,924)			FRAM (<i>n</i> = 1,145)			TwinGene (<i>n</i> = 5,668)			WTCCC-T2D (<i>n</i> = 1,914)			B-PROOF(<i>n</i> = 2,555)			Weighted average			<i>b</i> Pred.
	#SNP	<i>h</i> ² _g	SE	#SNP	<i>h</i> ² _g	SE	#SNP	<i>h</i> ² _g	SE	#SNP	<i>h</i> ² _g	SE	#SNP	<i>h</i> ² _g	SE	<i>h</i> ² _g	SE	<i>h</i> ² _g	
5E-8	675	0.164	0.016	656	0.190	0.040	670	0.159	0.013	679	0.143	0.025	691	0.152	0.021	0.159	0.008	0.149	
5E-7	887	0.187	0.017	862	0.210	0.045	866	0.170	0.013	890	0.184	0.028	886	0.162	0.022	0.176	0.009	0.166	
5E-6	1245	0.196	0.018	1202	0.207	0.050	1186	0.188	0.014	1256	0.201	0.030	1232	0.175	0.024	0.190	0.009	0.186	
5E-5	1950	0.212	0.020	1891	0.183	0.060	1918	0.208	0.015	1985	0.208	0.037	1947	0.194	0.029	0.206	0.010	0.218	
5E-4	3754	0.248	0.024	3671	0.239	0.080	3689	0.239	0.017	3771	0.201	0.047	3661	0.248	0.037	0.240	0.013	0.259	
5E-3	9693	0.297	0.035	9403	0.171	0.126	9548	0.287	0.025	9677	0.267	0.070	9174	0.341	0.055	0.292	0.018	0.339	
†HM3	1.08M	0.473	0.086	1.06M	0.313	0.291	1.12M	0.522	0.060	0.97M	0.534	0.170	1.09M	0.463	0.126	0.498	0.044		

^aThe estimates from all the five cohorts were averaged by the inverse-variance approach i.e. $\sum_i (h^2_{g(i)} SE_i^2) / \sum_i (1/SE_i^2)$;

^bthe predicted variance explained by the selected SNPs (*V_g*) from the within-family prediction analysis;

^cSNPs from HapMap3 project¹¹.

Table 2

Comparison of prioritized variants, loci, biology and variance explained from GWASs on human stature with 130,000 individuals (previously published in Lango Allen *et al.*, 2010) and with 250,000 individuals (this paper).

	Height GWAS with 130,000 samples (Lango Allen <i>et al.</i> , Yang <i>et al.</i>) [*]	Height GWAS with 253,288 samples
<i>SNP based comparisons</i>		
GWAS significant SNPs	199	697
Genomic loci [#] (+/- 1Mb)	180	423
Loci [#] with multiple signals	19	147
Secondary associations in loci [#]	19	273
<i>Biological annotation (DEPICT at FDR < 0.05)</i>		
Prioritized genes	92	649
Loci ^{&} with prioritized gene	74 (43%)	422 (75%)
Pruned gene sets and protein-protein complexes [%]	813	2,330
Tissues and cell-types	5	43
<i>Variance explained</i>		
GWAS significant SNPs	10%	16%
Deep list of SNPs at 1×10^{-3}	13%	29%
All common SNPs	45% ^{**}	50%
<i>Heritability explained</i>		
GWAS significant SNPs	12.5%	20%
Deep list of SNPs at 1×10^{-3}	16%	36%
All common SNPs	56% ^{**}	62.5%

* Counts, numbers and estimates for Lango Allen *et al.* are taken from respective publication.

[#] Genomic loci defined by distance: +/- 1Mb from index height SNP

[&] Genomic loci defined by LD: $r^2 > 0.5$ from index height SNP

[%] After clumping of similar gene sets and pathways

^{**} Yang et al. *Nat Genet* **42**, 565–9 (2010).

Table 3

Significantly prioritized novel human growth associated genes

The table lists 20 genes prioritized by DEPICT. Genes are ranked by the number of lines of supporting evidence and the DEPICT P -value (Supplementary Table 16). Because 20 of the 30 top-ranked genes were in a curated list of genes known to cause syndromes of skeletal¹², these “OMIM genes” are not shown here. The top fifteen genes with prior literature support (based on GRAIL) are shown, followed by the top five novel genes. Each gene is accompanied by the significantly enriched reconstituted gene sets in which it appears in (DEPICT gene set enrichment analysis). Abbreviations; (GO – Gene Ontology; MP – Mice Phenotypes from Mouse Genome Informatics database; *InWeb* – protein-protein interaction complexes; KEGG and REACTOME databases).

Locus (height SNP)	Gene symbol	New locus	Prioritization P -value	Levels of biological annotation	Top ranking reconstituted gene sets
Genes with prior literature support (GRAIL)					
rs10748128	<i>FRS2</i>	N	1.0×10^{-16}	7	PI 3K cascade (REACTOME, $P=6.2 \times 10^{-13}$); Chronic Myeloid Leukemia (KEGG, $P=1.6 \times 10^{-12}$); Response To Fibroblast Growth Factor Stimulus (GO, $P=5.4 \times 10^{-11}$);
rs2166898	<i>GLI2</i>	Y	4.4×10^{-16}	7	Growth Factor Binding (GO, $P=2.6 \times 10^{-14}$); Regulation Of Osteoblast Differentiation (GO, $P=2.3 \times 10^{-11}$); WNT-Protein Binding (GO, $P=1.9 \times 10^{-12}$)
rs526896-rs9327705	<i>TBX4</i>	N	9.9×10^{-9}	7	Short Mandible (MP, $P=3.3 \times 10^{-19}$); Respiratory System Development (GO, $P=3.1 \times 10^{-17}$); Abnormal Ulna Morphology (MP, $P=1.9 \times 10^{-15}$)
rs16860216	<i>SOX8</i>	N	0.016	7	Small Thoracic Cage (MP, $P=6.9 \times 10^{-14}$); Short Ribs (MP, $P=2.7 \times 10^{-8}$); Short Sternum (MP, $P=6.5 \times 10^{-7}$)
rs1199734	<i>LATS2</i>	Y	1.0×10^{-16}	6	Partial Lethality Throughout Fetal Growth And Development (MP, $P=1.2 \times 10^{-18}$); Growth Factor Binding (GO, $P=2.6 \times 10^{-14}$); TGF β 1 protein complex (<i>InWeb</i> , $P=6.3 \times 10^{-15}$)
rs12323101	<i>PDS5B</i>	N	1.0×10^{-16}	6	Chromatin Binding (GO, $P=6.4 \times 10^{-17}$); Nuclear Hormone Receptor Binding (GO, $P=2.4 \times 10^{-12}$); RBBP4 protein complex (<i>InWeb</i> , $P=1.3 \times 10^{-11}$); WNT16 protein complex (<i>InWeb</i> , $P=1.9 \times 10^{-8}$)
rs6746356	<i>SP3</i>	Y	1.0×10^{-16}	6	BCOR protein complex (<i>InWeb</i> , $P=2.7 \times 10^{-17}$); AFF2 protein complex (<i>InWeb</i> , $P=4.5 \times 10^{-7}$); Intracellular Steroid Hormone Receptor Signaling Pathway (GO, $P=9.0 \times 10^{-6}$)
rs3923086	<i>AXIN2</i>	Y	2.2×10^{-16}	6	Signaling By Transforming Growth Factor Beta (KEGG, $P=3.8 \times 10^{-15}$); WNT Receptor Signaling Pathway (GO, $P=6.9 \times 10^{-14}$); Polydactyly (MP, $P=1.5 \times 10^{-10}$)
rs3790086	<i>LITBP1</i>	N	1.3×10^{-13}	6	Abnormal Skeleton Morphology (MP, $P=1.1 \times 10^{-15}$); TGF Beta Signaling Pathway (KEGG, $P=3.8 \times 10^{-15}$); Growth Factor Binding (GO, $P=2.6 \times 10^{-14}$)
rs2034172	<i>WNT5A</i>	Y	4.3×10^{-13}	6	Partial Lethality Throughout Fetal Growth And Development (MP, $P=1.2 \times 10^{-18}$); Tissue Morphogenesis (GO, $P=4.1 \times 10^{-20}$); Abnormal Skeleton Morphology (MP, $P=1.1 \times 10^{-15}$)
rs3915129	<i>CTNNB1</i>	Y	3.5×10^{-12}	6	AR protein complex (<i>InWeb</i> , $P=8.9 \times 10^{-17}$); TCEB1 protein complex (<i>InWeb</i> , $P=1.5 \times 10^{-11}$); GTF2I protein complex (<i>InWeb</i> , $P=4.6 \times 10^{-11}$)

Locus (height SNP)	Gene symbol	New locus	Prioritization P-value	Levels of biological annotation	Top ranking reconstituted gene sets
rs12330322	<i>BMP2</i>	N	5.6×10^{-10}	6	Transcription Factor Binding (<i>GO</i> , $P=4.7 \times 10^{-26}$); Complete Embryonic Lethality During Organogenesis (<i>MP</i> , $P=4.9 \times 10^{-21}$); Short Mandible (<i>MP</i> , $P=3.3 \times 10^{-16}$)
rs10958476-rs6999671	<i>BMP6</i>	N	2.9×10^{-8}	6	Small Basipheneoid Bone (<i>MP</i> , $P=8.9 \times 10^{-17}$); TGF Beta Signaling Pathway (<i>KEGG</i> , $P=3.8 \times 10^{-15}$); Growth Factor Binding (<i>GO</i> , $P=2.6 \times 10^{-14}$)
rs564914	<i>SOX5</i>	Y	4.6×10^{-7}	6	Disproportionate Dwarf (<i>MP</i> , $P=1.8 \times 10^{-13}$); Abnormal Cartilage Morphology (<i>MP</i> , $P=1.9 \times 10^{-13}$); Short Limbs (<i>MP</i> , $P=2.8 \times 10^{-13}$)
rs17807185	<i>WNT4</i>	Y	4.6×10^{-7}	6	Morphogenesis Of An Epithelium (<i>GO</i> , $P=2.3 \times 10^{-17}$); Gland Development (<i>GO</i> , $P=5.4 \times 10^{-16}$); Basal Cell Carcinoma (<i>KEGG</i> , $P=1.5 \times 10^{-12}$)
Novel genes without prior evidence					
rs8042424	<i>CHSY1</i>	N	1.0×10^{-16}	7	Abnormal Cartilage Morphology (<i>MP</i> , $P=1.9 \times 10^{-13}$); Abnormal Bone Ossification (<i>MP</i> , $P=2.1 \times 10^{-12}$); Signaling by Transforming Growth Factor Beta (<i>REACTOME</i> , $P=5.9 \times 10^{-9}$)
rs7652177	<i>FNDC3B</i>	N	1.0×10^{-16}	5	Abnormal Spongiotrophoblast Layer Morphology (<i>MP</i> , $P=3.2 \times 10^{-16}$); Decreased Length Of Long Bones (<i>MP</i> , $P=2.7 \times 10^{-12}$); ITGB1 protein complex (<i>InWeb</i> , $P=5.2 \times 10^{-8}$)
rs7284476	<i>TRIOBP</i>	Y	1.0×10^{-16}	5	Negative Regulation Of Cell Proliferation (<i>GO</i> , $P=4.3 \times 10^{-17}$); Abnormal Vitelline Vasculature Morphology (<i>MP</i> , $P=1.7 \times 10^{-15}$); Beta-Catenin Binding (<i>GO</i> , $P=3.0 \times 10^{-5}$)
rs2149163-rs3927536	<i>BNC2</i>	N	1.0×10^{-16}	5	Short Ulna (<i>MP</i> , $P=4.7 \times 10^{-13}$); Abnormal Joint Morphology (<i>MP</i> , $P=8.6 \times 10^{-11}$); Regulation Of Chondrocyte Differentiation (<i>GO</i> , $P=2.9 \times 10^{-9}$)
rs3790086	<i>WWP2</i>	Y	1.0×10^{-16}	5	Cartilage Development (<i>GO</i> , $P=2.0 \times 10^{-19}$); Chondrocyte Differentiation (<i>GO</i> , $P=3.0 \times 10^{-15}$); Signaling By Platelet-Derived Growth Factor (<i>REACTOME</i> , $P=4.8 \times 10^{-10}$)