

Serveur Académique Lausannois SERVAL serval.unil.ch

Publisher's version PDF

Faculty of Biology and Medicine Publication

Originally published at:

Title: Transcatheter aortic valve implantation in failed bioprosthetic surgical valves.

Authors: Dvir D, Webb JG, Bleiziffer S, Pasic M, Waksman R, Kodali S, Barbanti M, Latib A, Schaefer U, Rodés-Cabau J, Treede H, Piazza N, Hildick-Smith D, Himbert D, Walther T, Hengstenberg C, Nissen H, Bekerredjian R, Presbitero P, Ferrari E, Segev A, de Weger A, Windecker S, Moat NE, Napodano M, Wilbring M, Cerillo AG, Brecker S, Tchetché D, Lefèvre T, De Marco F, Fiorina C, Petronio AS, Teles RC, Testa L, Laborde JC, Leon MB, Kornowski R, Valve-in-Valve International Data Registry Investigators.

Journal: JAMA

Year: 2014 Jul

Volume: 312

Issue: 2

Pages: 162-70

Copyright (year) American Medical Association. All rights reserved.

Original Investigation

Transcatheter Aortic Valve Implantation in Failed Bioprosthetic Surgical Valves

Danny Dvir, MD; John G. Webb, MD; Sabine Bleiziffer, MD; Miralem Pasic, MD, PhD; Ron Waksman, MD; Susheel Kodali, MD; Marco Barbanti, MD; Azeem Latib, MD; Ulrich Schaefer, MD; Josep Rodés-Cabau, MD; Hendrik Treede, MD; Nicolo Piazza, MD, PhD; David Hildick-Smith, MD; Dominique Himbert, MD; Thomas Walther, MD; Christian Hengstenberg, MD; Henrik Nissen, MD, PhD; Raffi Bekeredjian, MD; Patrizia Presbitero, MD; Enrico Ferrari, MD; Amit Segev, MD; Arend de Weger, MD; Stephan Windecker, MD; Neil E. Moat, FRCS; Massimo Napodano, MD; Manuel Wilbring, MD; Alfredo G. Cerillo, MD; Stephen Brecker, MD; Didier Tchetche, MD; Thierry Lefèvre, MD; Federico De Marco, MD; Claudia Fiorina, MD; Anna Sonia Petronio, MD; Rui C. Teles, MD; Luca Testa, MD; Jean-Claude Laborde, MD; Martin B. Leon, MD; Ran Kornowski, MD; for the Valve-in-Valve International Data Registry Investigators

IMPORTANCE Owing to a considerable shift toward bioprosthesis implantation rather than mechanical valves, it is expected that patients will increasingly present with degenerated bioprostheses in the next few years. Transcatheter aortic valve-in-valve implantation is a less invasive approach for patients with structural valve deterioration; however, a comprehensive evaluation of survival after the procedure has not yet been performed.

OBJECTIVE To determine the survival of patients after transcatheter valve-in-valve implantation inside failed surgical bioprosthetic valves.

DESIGN, SETTING, AND PARTICIPANTS Correlates for survival were evaluated using a multinational valve-in-valve registry that included 459 patients with degenerated bioprosthetic valves undergoing valve-in-valve implantation between 2007 and May 2013 in 55 centers (mean age, 77.6 [SD, 9.8] years; 56% men; median Society of Thoracic Surgeons mortality prediction score, 9.8% [interquartile range, 7.7%-16%]). Surgical valves were classified as small (≤ 21 mm; 29.7%), intermediate (>21 and <25 mm; 39.3%), and large (≥ 25 mm; 31%). Implanted devices included both balloon- and self-expandable valves.

MAIN OUTCOMES AND MEASURES Survival, stroke, and New York Heart Association functional class.

RESULTS Modes of bioprosthesis failure were stenosis ($n = 181$ [39.4%]), regurgitation ($n = 139$ [30.3%]), and combined ($n = 139$ [30.3%]). The stenosis group had a higher percentage of small valves (37% vs 20.9% and 26.6% in the regurgitation and combined groups, respectively; $P = .005$). Within 1 month following valve-in-valve implantation, 35 (7.6%) patients died, 8 (1.7%) had major stroke, and 313 (92.6%) of surviving patients had good functional status (New York Heart Association class I/II). The overall 1-year Kaplan-Meier survival rate was 83.2% (95% CI, 80.8%-84.7%; 62 death events; 228 survivors). Patients in the stenosis group had worse 1-year survival (76.6%; 95% CI, 68.9%-83.1%; 34 deaths; 86 survivors) in comparison with the regurgitation group (91.2%; 95% CI, 85.7%-96.7%; 10 deaths; 76 survivors) and the combined group (83.9%; 95% CI, 76.8%-91%; 18 deaths; 66 survivors) ($P = .01$). Similarly, patients with small valves had worse 1-year survival (74.8% [95% CI, 66.2%-83.4%]; 27 deaths; 57 survivors) vs with intermediate-sized valves (81.8%; 95% CI, 75.3%-88.3%; 26 deaths; 92 survivors) and with large valves (93.3%; 95% CI, 85.7%-96.7%; 7 deaths; 73 survivors) ($P = .001$). Factors associated with mortality within 1 year included having small surgical bioprosthesis (≤ 21 mm; hazard ratio, 2.04; 95% CI, 1.14-3.67; $P = .02$) and baseline stenosis (vs regurgitation; hazard ratio, 3.07; 95% CI, 1.33-7.08; $P = .008$).

CONCLUSIONS AND RELEVANCE In this registry of patients who underwent transcatheter valve-in-valve implantation for degenerated bioprosthetic aortic valves, overall 1-year survival was 83.2%. Survival was lower among patients with small bioprostheses and those with predominant surgical valve stenosis.

JAMA. 2014;312(2):162-170. doi:10.1001/jama.2014.7246

+ Author Video Interview at jama.com

+ Supplemental content at jama.com

Author Affiliations: Author affiliations are listed at the end of this article.

Group Information: The Valve-in-Valve International Data Registry Investigators are listed in eTable 1 in the Supplement.

Corresponding Author: Danny Dvir, MD, St Paul's Hospital, 1081 Burrard St, Vancouver, BC V6Z 1Y6, Canada (ddvir@providencehealth.bc.ca).

Surgical aortic valve replacements increasingly use bioprosthesis implants rather than mechanical valves.¹ Structural valve deterioration can result in leaflet degeneration and failure, as evidenced by valve stenosis, regurgitation, or a combination of both.²⁻⁴ Owing to a considerable shift toward bioprosthesis implantation, it is expected that patients will increasingly present with degenerated bioprostheses. Treatment of patients with failed bioprostheses is a clinical challenge. Although reoperation is considered the standard of care, these patients are frequently elderly, and repeat cardiac surgery carries significant morbidity and mortality risks.^{5,6}

Transcatheter aortic valve replacement has become an alternative, less invasive treatment for patients at high surgical risk with severe symptomatic native aortic valve stenosis.⁷⁻¹¹ Previous reports have demonstrated the feasibility of treating degenerated bioprostheses with transcatheter heart valves inside failed surgical valves (eFigure 1 in the Supplement).¹²⁻¹⁶ Preliminary data from the Valve-in-Valve International Data (VIVID) Registry revealed that although procedural success was achieved in 93.1% of patients, the valve-in-valve procedure included several safety and efficacy concerns.¹⁷ However, a comprehensive long-term evaluation of valve-in-valve procedures of a larger group of patients with considerable follow-up has not yet been performed.

Methods

Registry Design

The VIVID Registry was initiated in December 2010 and was designed to collect data on valve-in-valve procedures using mainly self-expandable CoreValve (Medtronic) and balloon-expandable Edwards SAPIEN devices (Edwards Lifesciences). Valve-in-valve procedures performed using other transcatheter devices or implanted in positions other than the aortic valve were not included in the current analyses. We collected data retrospectively for cases performed before registry initiation and prospectively thereafter. A total of 55 centers from Europe, North America, Australia, New Zealand, and the Middle East contributed data (eTable 1 in the Supplement). Data were collected for cases performed between 2007 and May 2013 using a dedicated case report form. All inconsistencies were resolved directly with local investigators and on-site data monitoring. All patients gave written informed consent to a transcatheter aortic valve-in-valve procedure. The inclusion of patients was approved in each center by a local ethics committee.

Definitions

Prediction of patient operative mortality after conventional surgical valve replacement was calculated using the Society of Thoracic Surgeons (STS) score (<http://riskcalc.sts.org/de.aspx>) and the LogEuroSCORE (<http://www.euroscore.org/calcold.html>). Mechanism of bioprosthetic valve failure (ie, stenosis, regurgitation, or combined) was evaluated according to the criteria of the American Society of Echocardiography.¹⁸ Patients with at least a moderate degree

of both stenosis and regurgitation were included in the combined group. Other patients were categorized according to the primary mechanism of failure, either in the stenosis group or in the regurgitation group. Body surface area was calculated using the Mosteller formula. Internal diameter of a surgical valve was derived from its label size and manufacturer charts.¹⁹ In cases for which label size was unknown, internal diameter was defined according to available imaging modes, such as computed tomography or transesophageal echocardiography. Major clinical end points were assessed according to the Valve Academic Research Consortium criteria.²⁰ Early postimplantation hemodynamic data were obtained from either intraprocedural or first postprocedural echocardiogram. Post-valve-in-valve severe prosthetic-patient mismatch (PPM) was defined in cases that had a postprocedure effective aortic orifice area divided by body surface area of less than 0.65 cm²/m².²¹

Statistical Analysis

Results are presented as mean (standard deviation) for continuous variables with normal distribution, as median (interquartile range) for continuous variables without normal distribution, and as number (percentage) for categorical data. The *t* test was used to compare normally distributed continuous variables between the devices used during the valve-in-valve procedure and the Wilcoxon rank sum test was used for variables not normally distributed. One-way analysis of variance was used to compare the stenosis, regurgitation, and combined groups for normally distributed continuous variables and the Kruskal-Wallis test was used for non-normally distributed data. The χ^2 and Fisher exact tests were used to compare categorical variables. Time-to-event curves using the Kaplan-Meier method were calculated. Results were compared using the log-rank statistic. High postprocedural gradients were defined as those having mean gradients of at least 20 mm Hg.²⁰ Variables entered into bivariable models included sex, age, baseline echocardiographic parameters (ie, left ventricular ejection fraction), STS score, baseline renal failure, bioprosthetic type (stented vs stentless) and size, device used during the valve-in-valve procedure, and procedural access. Three semiparametric Cox proportional hazards regression analyses were conducted. The first was an overall analysis and the others were time-segmented analyses. For the latter, the hazard function was used as a guide to determine approximate time points for the end of the early phase of hazard and the beginning of the late phase. This occurred at approximately 30 days. Therefore, piece-wise time-segmented Cox analyses were performed for 2 periods. For one pair of analyses, deaths occurring within the first 30 postoperative days were analyzed, with follow-up beyond that time set to 30 days; then deaths beyond 30 days were analyzed. Characteristics included in the multivariable model for 1-year death were bioprosthesis label size, mechanism of failure, procedural access, and STS score. The results of the multivariable analysis are presented as hazard ratios (HRs) for 1-year mortality with 95% confidence intervals. A 2-sided *P* < .05 was considered statistically significant. Statistical analysis was performed using SPSS version 20.0 statistical software (IBM SPSS Inc).

Table 1. Baseline Characteristics at the Time of Valve-in-Valve Procedure

Characteristics	Mechanism of Surgical Valve Failure				P Value	Device Used		P Value
	All (n = 459)	Stenosis (n = 181)	Regurgitation (n = 139)	Combined (n = 139)		Self-Expandable (n = 213)	Balloon-Expandable (n = 246)	
Age, mean (SD), y	77.6 (9.8)	78.8 (7.8)	77.1 (10.6)	76.6 (11.1)	.10	77.6 (10)	77.6 (9.7)	.95
Men, No. (%)	257 (56)	87 (48)	93 (66.9)	77 (55.4)	.002	113 (53.1)	144 (58.5)	.25
Height, mean (SD), cm	167.2 (9.8)	167.1 (9.9)	168.1 (9.7)	166.5 (9.8)	.20	166.9 (10)	167.4 (9.7)	.59
Weight, mean (SD), kg	73.9 (15.2)	77.6 (16.5)	72 (13.3)	70.8 (14.1)	<.001	73.7 (15)	74 (15.4)	.84
BMI, mean (SD) ^a	26.4 (4.8)	27.7 (4.8)	25.4 (3.9)	25.5 (4.2)	<.001	26.4 (4.6)	26.3 (4.4)	.78
BSA, mean (SD), m ²	1.85 (0.22)	1.89 (0.24)	1.83 (0.2)	1.8 (0.21)	.002	1.84 (0.22)	1.85 (0.23)	.76
LogEuroSCORE, median (IQR), % ^b	29 (19.1-42.3)	29.8 (20-39.9)	25.7 (16-41.9)	30.3 (22.3-44.7)	.18	29 (18.6-38.7)	29 (19.3-44.2)	.48
STS score, median (IQR), % ^b	10 (6.2-16.1)	9.9 (6.1-13.9)	9.9 (5.8-15.6)	10.8 (7.1-18.4)	.33	11 (6.2-17.3)	9.3 (6.1-14.1)	.13
Diabetes mellitus, No. (%)	125 (28.7)	69 (40.1)	28 (21.2)	28 (21.4)	.001	62 (31.1)	63 (26.5)	.29
Peripheral vascular disease, No. (%)	114 (26.1)	53 (30.6)	31 (23.5)	30 (22.9)	.22	37 (17.4)	77 (31.3)	<.001
Chronic renal failure, No. (%) ^c	224 (48.8)	80 (44.2)	71 (51.1)	72 (51.8)	.37	81 (38)	140 (56.9)	<.001
Previous stroke/TIA, No. (%)	51 (11.7)	23 (13.3)	17 (12.8)	12 (9.2)	.52	24 (12.2)	27 (11.3)	.76
>1 Previous SAVR, No. (%)	62 (13.5)	16 (8.8)	23 (16.5)	23 (16.5)	.06	27 (12.7)	35 (14.2)	.63
NYHA functional class, No. (%)								
II	35 (7.8)	14 (7.7)	10 (7.2)	11 (7.9)	.97	15 (7)	20 (8.1)	.66
III	283 (61.9)	130 (71.8)	78 (56.1)	75 (54)	.001	124 (58.2)	159 (64.6)	.16
IV	141 (30.3)	37 (26.2)	51 (36.7)	53 (38.1)	.001	74 (34.7)	67 (27.2)	.08
Left ventricular ejection fraction, mean (SD), %	50.3 (13.1)	51.7 (12.9)	49.0 (13.1)	49.7 (13.3)	.16	49.1 (13.4)	51.2 (12.8)	.08

Abbreviations: BMI, Body mass index; BSA, body surface area; IQR, interquartile range; NYHA, New York Heart Association; SAVR, surgical aortic valve replacement; STS, Society of Thoracic Surgeons; TIA, transient ischemic attack.

^a Body mass index is calculated as weight in kilograms divided by height in meters squared.

^b Prediction of operative mortality after conventional surgical valve replacement (STS score: <http://riskcalc.sts.org/de.aspx>; LogEuroSCORE: <http://www.euroscore.org/calcold.html>). Range of scores is 0% to 100%; higher score indicates greater patient risk.

^c Calculated glomerular filtration rate <60 mL/min.

Results

Patient Demographics

Table 1 shows clinical characteristics of the 459 patients included in the registry. Mean age was 77.6 (SD, 9.8) years (range, 25-92 years) and 56% were men. The mechanism of failure of surgical bioprostheses was stenosis in 181 patients (39.4%), regurgitation in 139 (30.3%), and combined in 139 (30.3%). The balloon-expandable device was used in 246 patients (53.6%) and the self-expandable in 213 patients (46.4%). The distribution of failure mode differed between the balloon-expandable device group (stenosis, n = 106 [43.1%]; regurgitation, n = 61 [24.8%]; combined, n = 79 [32.1%]) and the self-expandable device group (stenosis, n = 75 [35.2%]; regurgitation, n = 78 [36.6%]; combined, n = 60 [28.2%]), as more regurgitant bioprostheses were treated by self-expandable device implantation ($P = .02$). There were no significant differences in surgical risk scores when patients were stratified according to mechanism of failure or according to the device used during the valve-in-valve procedure. The stenosis group had more women and higher patient body weight, body mass index, and body surface area levels in comparison with the other groups (Table 1).

Degenerated Bioprosthetic Valves and Characteristics of Valve-in-Valve Procedures

Patients included in the registry had 1 to 4 previous cardiac surgeries (Table 2 and eTable 2 in the Supplement). Surgical valve sizes were characterized as small (label size ≤ 21 mm; n = 133 [29%]), intermediate (>21 mm and <25 mm; n = 176 [38.3%]), large (≥ 25 mm; n = 139 [30.3%]), and unknown (n = 11 [2.4%]). Bioprostheses were either stented (n = 366 [79.7%]) or stentless (n = 93 [20.3%]). The stenosis group had more stented valves (95.6% vs 60.4% in the regurgitation group and 78.4% in the combined group; $P < .001$) and more small valves (37% vs 20.9% and 26.6%, respectively; $P = .005$). There was no significant difference between the self-expandable and balloon-expandable device groups in the rate of valve-in-valve procedures performed in small bioprostheses (31.9% vs 26.4%, respectively; $P = .19$).

Devices used included balloon-expandable 20-mm, 23-mm, 26-mm, and 29-mm sizes (58.9% SAPIEN XT) and self-expandable 23-mm, 26-mm, 29-mm, and 31-mm sizes. eTable 3 in the Supplement shows data on valve-in-valve procedural characteristics. Device delivery access included transfemoral (n = 270 [58.8%]), transapical (n = 171 [37.3%]), transaxillary (n = 13 [2.8%]), and direct aortic (n = 5 [1.1%]). The main ac-

Table 2. Surgical Valve Characteristics at the Time of Valve-in-Valve Procedure

Characteristics	Mechanism of Surgical Valve Failure				P Value	Device Used		P Value
	All (n = 459)	Stenosis (n = 181)	Regurgitation (n = 139)	Combined (n = 139)		Self-Expandable (n = 213)	Balloon-Expandable (n = 246)	
Time since last SAVR, median (IQR), y ^a	9 (6-12)	8 (5-11)	10(7-14)	10 (7-14)	.04	9 (7-13)	9 (6-12)	.08
Type, No. (%)					<.001			<.001
Stented	366 (79.7)	173 (95.6)	84 (60.4)	109 (78.4)		152 (71.4)	214 (87)	
Stentless	93 (20.3)	8 (4.4)	55 (29.6)	30 (21.6)		61 (28.6)	32 (13)	
Label size, No. (%)								
≤21 mm	133 (29)	67 (37)	29 (20.9)	37 (26.6)	.005	68 (31.9)	65 (26.4)	.19
>21 mm and <25 mm	176 (38.3)	74 (40.9)	43 (30.9)	59 (42.4)	.09	83 (39)	93 (37.8)	.80
≥25 mm	139 (30.3)	34 (18.8)	65 (46.8)	40 (28.8)	<.001	53 (24.9)	86 (35)	.02
Unknown	11 (2.4)	6 (3.3)	2 (1.4)	3 (2.2)	.54	9 (4.2)	2 (0.8)	.02
Internal diameter, No. (%)								
<20 mm	126 (27.5)	53 (29.3)	32 (23)	41 (41.7)	.37	66 (31)	60 (24.4)	.11
≥20 mm and <23 mm	230 (50.1)	102 (56.4)	64 (34.5)	64 (46)	.10	100 (46.5)	130 (52.8)	.21
≥23 mm	103 (22.4)	26 (14.4)	43 (30.9)	34 (24.5)	.002	46 (21.6)	57 (23.2)	.69
AV area, mean (SD), cm ²	0.95 (0.48)	0.69 (0.21)	1.48 (0.6)	0.91 (0.31)	<.001	0.99 (0.49)	0.91 (0.46)	.04
AV index, mean (SD), cm ² /m ^{2b}	0.51 (0.28)	0.38(0.13)	0.83 (0.37)	0.51(0.19)	<.001	0.55 (0.31)	0.49 (0.25)	.05
AV maximum gradient, mean (SD), mm Hg	60.8 (27.4)	75.2 (23.1)	34.3 (17.7)	64.6 (22.8)	<.001	59.7 (27.2)	61.8 (27.6)	.44
AV gradient, mean (SD), mm Hg	36.2 (18.4)	46.4 (16.1)	18.0 (10.1)	37.6 (14.9)	<.001	35 (18.5)	37.3 (18.3)	.21
AV regurgitation of at least moderate degree, No. (%) ^c	296 (64.5)	22 (12.2)	139 (100)	135 (97.1)	<.001	143 (67.1)	153 (63)	.27

Abbreviations: AV, aortic valve; IQR, interquartile range; SAVR, surgical aortic valve replacement.

^a Time interval between last SAVR and valve-in-valve procedure.

^b AV index = AV area (cm²)/patient body surface area (m²).

^c Evaluated according to the criteria of the American Society of Echocardiography.¹⁸

cess route in the self-expandable device group was transfemoral (n = 197 [92.5%]) while in the majority of the balloon-expandable device group was transapical (n = 171 [69.5%]; *P* < .001). Device retrieval was attempted in 10.3% of self-expandable procedures. A second transcatheter device was implanted in 5.7% of the total patients (self-expandable, 7.5% vs balloon-expandable, 4.1%; *P* = .05). Ostial coronary obstruction following valve-in-valve implantation occurred in 2% and was more frequent in the stenosis group (3.9%; *P* = .02).

Clinical Outcomes

The median duration of hospital stay after the procedure was 8 days (interquartile range, 5-12 days). At 30 days, 35 patients (7.6%) had died. Table 3 includes data on procedural outcomes. Patients in the stenosis group had a higher 30-day mortality rate (10.5% vs 4.3% in the regurgitation group and 7.2% in the combined group; *P* = .04). There were no differences between the self-expandable and balloon-expandable device groups in terms of mortality or stroke rates. The balloon-expandable device group had more major/life-threatening bleeding and more acute kidney injury events, while the self-expandable device group had more permanent pacemaker implantation. Aortic regurgitation of at least moderate degree was evident in 25 cases (5.4%) after valve-in-valve procedure and was more common in the regurgitation group (9.4% vs 2.8% in the stenosis group and 5% in the combined group; *P* = .04) and in the self-expandable device group (8.9% vs 2.4% in the balloon-expandable device group; *P* = .002).

The degree of postprocedure residual aortic stenosis was higher in the stenosis group, manifested by lower mean orifice area and higher mean gradient (orifice area, 1.37 [SD, 0.33] cm² and mean gradient, 18.5 [SD, 9.8] mm Hg vs 1.56 [SD, 0.51] cm² and 12 [SD, 6.7] mm Hg in the regurgitation group and 1.56 [SD, 0.65] cm² and 16.1 [SD, 8.3] mm Hg in the combined group, respectively; *P* < .001 for each comparison). Postprocedural gradients were assessed in 429 patients. Moderately elevated postprocedural gradients (mean gradients ≥20 mm Hg) were recorded in 115 patients (26.8%) (eFigure 2 in the Supplement). Elevated postprocedural gradients were more common with balloon-expandable devices in comparison with self-expandable devices (HR, 1.87; 95% CI, 1.21-2.9; *P* = .005); for small surgical valves, 41.2% vs 23.4% (*P* = .04) and for intermediate-sized valves, 35.8% vs 19.4% (*P* = .01), respectively. Severe PPM occurred in 31.8% of patients surviving aortic valve-in-valve procedure. The incidence of severe PPM was lower in patients with predominantly bioprosthesis regurgitation at baseline (19.3% vs 36.1% and 36.4% in those with predominant stenosis and combined failure, respectively; *P* = .03) and higher in patients who received a balloon-expandable device vs a self-expandable device (43.8% vs 15.2%, respectively; *P* < .001). One-year survival was not affected by having severe PPM (86.7% [95% CI, 77.6%-95.8%] vs 89.1% [95% CI, 82.2%-96%] in patients without severe PPM; *P* = .69).

Time-to-event curves are depicted in Figure 1. No patients were lost to follow-up. Median follow-up time was 301

Table 3. Clinical Outcomes

Outcomes	Mechanism of Surgical Valve Failure, No. (%)				P Value	Device Used, No. (%)		P Value
	All (n = 459)	Stenosis (n = 181)	Regurgitation (n = 139)	Combined (n = 139)		Self-Expandable (n = 213)	Balloon-Expandable (n = 246)	
Duration of hospital stay, median (IQR), d	8 (5-12)	7 (5-11)	7 (5-12)	8 (6-13)	.21	7 (5-12)	8 (6-13)	.07
Thirty-day outcomes								
Death, No. (%)	35 (7.6)	19 (10.5)	6 (4.3)	10 (7.2)	.04	15 (7)	20 (8.1)	.66
Cardiovascular death, No. (%)	30 (6.5)	16 (8.8)	5 (3.6)	9 (6.5)	.06	12 (5.6)	18 (7.3)	.47
NYHA functional class, No. (%)								
I/II	313 (92.6)	126 (91.3)	100 (94.3)	87 (92.6)	.83	160 (93)	153 (93.3)	.94
III/IV	25 (7.4)	12 (8.7)	6 (5.7)	7 (7.4)	.83	12 (7)	13 (7.8)	.94
Major stroke, No. (%) ^a	8 (1.7)	1 (0.6)	3 (2.2)	4 (2.9)	.26	2 (0.9)	6 (2.4)	.22
Death or major stroke, No. (%)	42 (9.2)	19 (10.5)	9 (6.5)	14 (10.1)	.42	17 (8)	25 (10.2)	.22
Major vascular complication, No. (%) ^a	42 (9.2)	14 (7.7)	10 (7.2)	18 (12.9)	.11	16 (7.5)	26 (10.6)	.26
Major/life-threatening bleeding, No. (%) ^a	37 (8.1)	20 (11)	5 (3.6)	12 (8.6)	.01	10 (4.7)	27 (11)	.01
Acute kidney injury type II/III, No. (%) ^a	34 (7.4)	16 (8.8)	10 (7.2)	8 (5.8)	.58	9 (4.2)	25 (10.2)	.02
Permanent pacemaker implantation, No. (%)	38 (8.3)	17 (9.4)	12 (8.6)	9 (6.5)	.63	26 (12.2)	12 (4.9)	.005
AV area, mean (SD), cm ²	1.47 (0.5)	1.37 (0.33)	1.56 (0.51)	1.56 (0.65)	.01	1.58 (0.41)	1.38 (0.54)	.001
AV index, mean (SD), cm ² /m ^{2b}	0.77 (0.25)	0.71 (0.15)	0.82 (0.23)	0.84 (0.35)	.004	0.83 (0.19)	0.74 (0.28)	.004
AV maximal gradient, mean (SD), mm Hg	28.3 (14.1)	32.2 (14.7)	22.4 (11.6)	29.1 (13.6)	<.001	26.2 (12.1)	30.3 (15.4)	.002
AV mean gradient, mean (SD), mm Hg	15.8 (8.9)	18.5 (9.8)	12 (6.7)	16.1 (8.3)	<.001	14.1 (7.3)	17.2 (9.7)	<.001
AV regurgitation of at least moderate degree, No. (%) ^c	25 (5.4)	5 (2.8)	13 (9.4)	7 (5)	.04	19 (8.9)	6 (2.4)	.002
Left ventricular ejection fraction, mean (SD), %	51.6 (11.5)	53.7 (9.9)	48.9 (11.6)	51.2 (12.9)	.002	51.2 (12.2)	51.7 (10.8)	.66
One-year outcomes								
Death, No. (%)	62 (16.8)	34 (23.4)	10 (8.8)	18 (16.1)	.01	25 (15)	37 (18.7)	.44
NYHA functional class, No. (%)								
I/II	163 (86.2)	62 (84.9)	46 (85.2)	55 (88.7)	.34	88 (81.6)	75 (82.4)	.89
III/IV	26 (13.8)	11 (15.1)	8 (14.8)	7 (11.3)	.34	10 (18.4)	16 (17.6)	.89
AV area, mean (SD), cm ²	1.38 (0.42)	1.28 (0.29)	1.51 (0.48)	1.36 (0.45)	.01	1.55 (0.41)	1.29 (0.39)	.006
AV maximal gradient, mean (SD), mm Hg	30 (14.7)	32.3 (14.9)	25.2 (15.4)	32.1 (12.5)	.005	25.3 (11.9)	33.3 (16)	<.001
AV mean gradient, mean (SD), mm Hg	16.9 (9.1)	18.3 (9.5)	13.8 (8.9)	18.4 (8)	.001	13.5 (7)	19.4 (9.6)	<.001

Abbreviations: AV, aortic valve; IQR, interquartile range; NYHA, New York Heart Association.

^a According to the Valve Academic Research Consortium definition.

^b AV index = AV area (cm²)/patient body surface area (m²).

^c Evaluated according to the criteria of the American Society of Echocardiography.¹⁸

days (interquartile range, 53-504 days). Overall 1-year Kaplan-Meier survival rate was 83.2% (95% CI, 80.8%-84.7%; 62 death events; 228 survivors). Patients in the stenosis group had worse 1-year survival (76.6%; 95% CI, 68.9%-83.1%; 34 deaths; 86 survivors) vs the regurgitation group (91.2%; 95% CI, 85.7%-96.7%; 10 deaths; 76 survivors) and the combined group (83.9%; 95% CI, 76.8%-91%; 18 deaths, 66 survivors) ($P = .01$). Similarly, patients with small valves had worse 1-year survival after valve-in-valve procedure (74.8%; 95% CI, 66.2%-83.4%; 27 deaths; 57 survivors) vs with intermediate-sized valves (81.8%; 95% CI, 75.3%-88.3%; 26 deaths; 92 survivors) or with large valves (93.3%; 95% CI, 85.7%-96.7%; 7 deaths; 73 survivors)

($P = .001$) (Figure 1, A and B). There was no significant difference in survival between patients undergoing self-expandable and balloon-expandable valve-in-valve procedures (Figure 1C). One-year mortality was higher among patients undergoing transapical procedures, those with STS scores higher than 20%, and those with a baseline left ventricular ejection fraction of less than 45% (eFigures 3-8 in the Supplement).

Figure 2 includes data on correlates for mortality within 1 year after valve-in-valve procedures. Independent correlates included small surgical bioprostheses (HR, 2.04; 95% CI, 1.14-3.67; $P = .02$), baseline surgical bioprosthesis stenosis (vs re-

gurgitation; HR, 3.07; 95% CI, 1.33-7.08; $P = .008$), transapical access (HR, 2.25; 95% CI, 1.26-4.02; $P = .006$), and STS score (per 1% increment; HR, 1.01; 95% CI, 1.00-1.01; $P < .001$). Independent correlates for early mortality (≤ 30 days) included small surgical bioprostheses (HR, 2.25; 95% CI, 1.03-4.93; $P = .04$) and for late mortality (>30 days) included baseline surgical bioprosthesis stenosis (HR, 3.33; 95% CI, 1.00-11.31; $P = .05$).

Discussion

The VIVID Registry is a multinational comprehensive evaluation of transcatheter valve implantations for failed surgical aortic bioprostheses. Survival after valve-in-valve procedures was associated with surgical valve size and mechanism of failure. Patients with baseline stenosis and those with small surgical valves had worse clinical outcomes after valve-in-valve procedures.

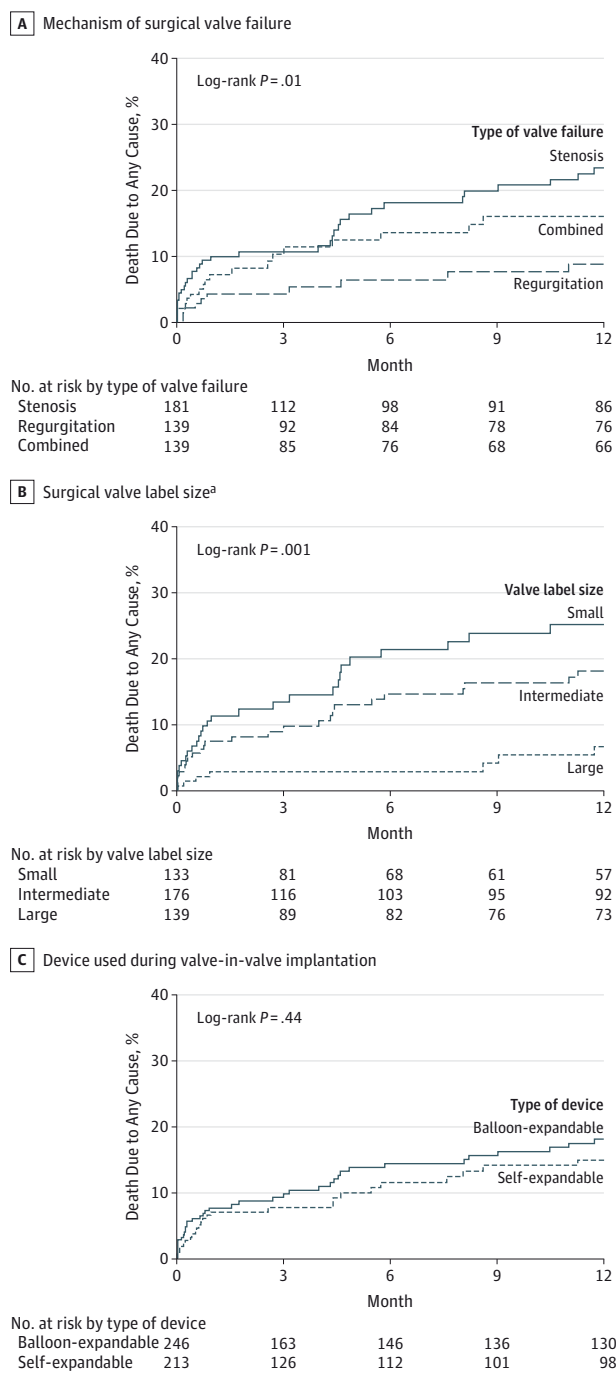
Mechanism of Failure of Bioprosthetic Valves and Valve-in-Valve Procedures

Valve-in-valve implantation should be considered a heterogeneous group of procedures, performed in widely diverse surgical valves with different degeneration modes.²² Bioprosthesis failure may present as stenosis that occurs as a consequence of calcification, pannus, or, less commonly, thrombosis. Failure may also present as regurgitation secondary to wear and tear or infection.^{23,24} The mode of failure in the VIVID registry was relatively balanced among stenosis, regurgitation, and a combination of both. Although there was no difference in patient age or calculated risk scores among the groups, clinical outcomes differed significantly. Higher mortality in the stenosis group could partially be attributed to higher rates of specific life-threatening procedural complications, such as ostial left main obstruction. Nevertheless, long-term dissimilarity between the groups could be a result of differences in baseline characteristics and postprocedural hemodynamics. After valve-in-valve implantation, patients with baseline stenosis had a lower valve area and higher gradients. Prosthetic-patient mismatch occurs when the effective orifice area is physiologically too small in relation to patient body size.²¹ In the current analysis, patients with predominantly surgical valve stenosis had larger body size measures (body weight, body mass index, and body surface area); nevertheless, they had smaller surgical valves implanted compared with the other groups. In patients undergoing surgical aortic valve replacement, lower effective orifice area in relation to body size is associated with lower left ventricular mass regression, less recovery in ventricular systolic function, and lower long-term survival.^{21,25-28}

Evaluation of Patients for Valve-in-Valve Procedures

Thorough assessment of candidates for valve-in-valve implantation is a key step to obtain optimal results.²² The current analysis highlights the need for meticulous evaluation of bioprosthesis mechanism of failure before attempting a valve-in-valve procedure. Patients who are diagnosed

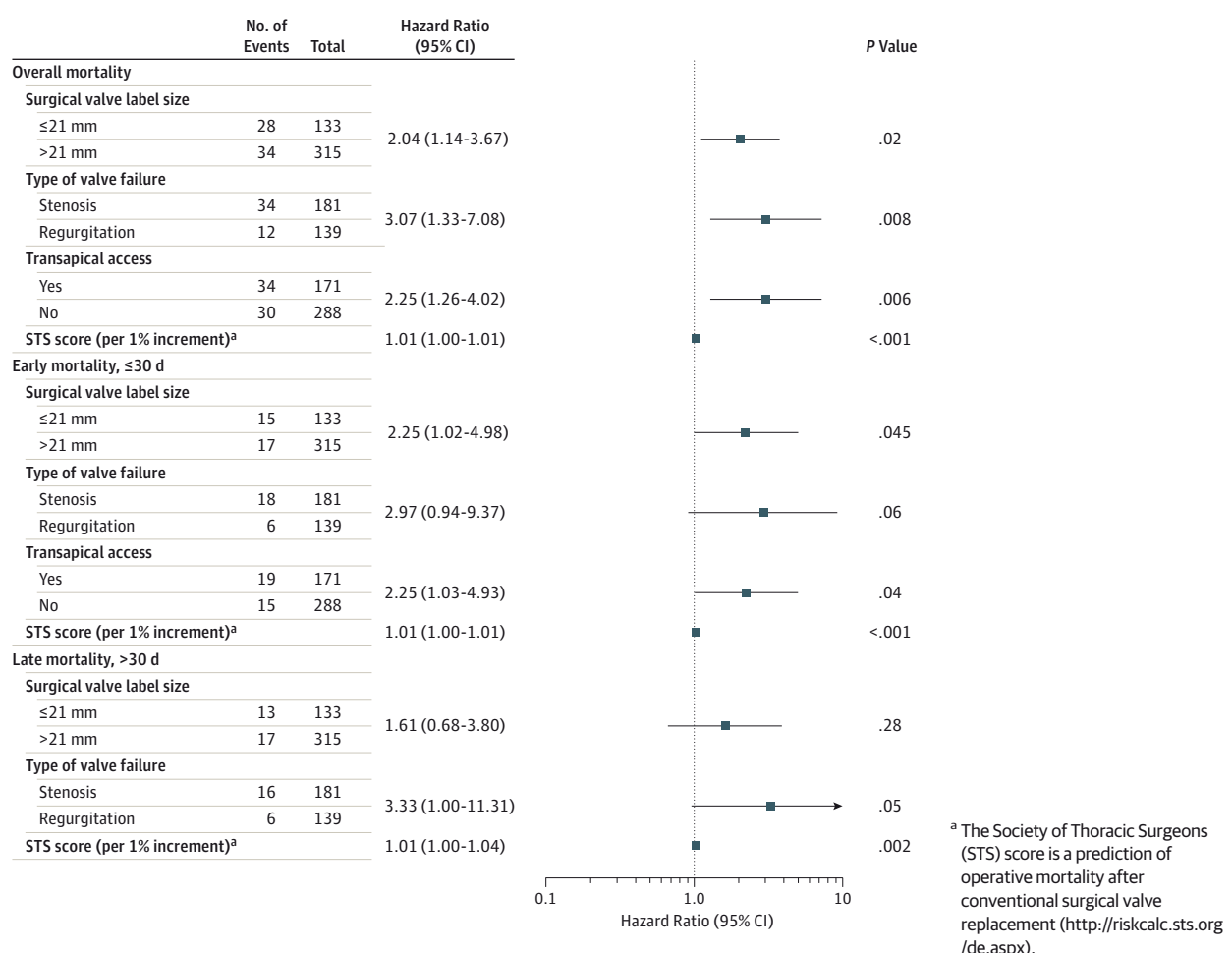
Figure 1. Time-to-Event Curves in Patients Undergoing Valve-in-Valve Procedures



^a Surgical valve sizes were as follows: small, label size ≤ 21 mm; intermediate, >21 mm and <25 mm; and large, ≥ 25 mm. In 11 patients (2.4%), label size was unknown.

as having failed surgical valves secondary to stenosis should be further separated into those with degenerated valves and those who have elevated gradients and small effective orifice area as a result of severe PPM with their surgical valve. Occasionally, it is clinically difficult to differentiate between

Figure 2. Results of Multivariable Analyses for Correlates for 1-Year Mortality After Valve-in-Valve Implantation



those entities, and a patient may have a combination of both. Small bioprostheses (label size ≤21 mm) have small effective orifice areas and the gradients across them are commonly high, even in the absence of structural degeneration, such as impaired leaflet mobility, significant calcification, or pannus.²⁹ Therefore, markers for stenosis in bioprostheses should lead to a more detailed assessment of previous echocardiographic examinations and changes in clinical status over years. It seems that the valve-in-valve approach should only be rarely offered to patients after implantation of small surgical valves without signs of valve degeneration, for which gradients are relatively stable over time.

Candidates with surgical valve regurgitation should be evaluated for the location of the leak. Significant paravalvular leak should not be treated by valve-in-valve implantation since no considerable change is expected in regurgitation severity.²² The current registry reveals an elevated rate of residual leak in the group of patients with baseline regurgitation (9.4%) in comparison with patients with predominantly stenosis (2.8%). Significant postprocedural regurgitation could be attributed to improper treatment of patients with predominantly paravalvular leak at baseline. Transesophageal echo-

cardiography is a key mode during this screening process and should be routinely performed for evaluating leak origin.

Implications for Cardiac Surgery

Increasing global valve-in-valve experience may affect cardiac surgery practice. The valve-in-valve approach may offer an effective, less invasive treatment for patients with failed surgical bioprostheses and, therefore, the trend toward implantation of bioprostheses in younger patients is expected to grow.¹ It is difficult to define an optimal cutoff age for bioprostheses implantation rather than mechanical valves.³⁰ However, surgeons should be aware that their technique is crucial to allow for the possibility of successful valve-in-valve implantation when bioprosthesis failure occurs years later. According to the VIVID Registry analysis, valve-in-valve outcomes are worse in patients with small surgical valves (label size ≤21 mm) and those with stenosis as the mechanism of failure; an attempt to address these limitations may possibly be made during the index procedure by providing the largest effective orifice area achievable. However, annular enlargement and other related techniques must balance the potential benefit of larger valve against described increase in operative complications.³¹⁻³³

Limitations

The valve-in-valve therapeutic approach represents a widely diverse heterogeneous group of procedures; hence, it is difficult to stratify patients according to each type of the numerous surgical valves treated. Nevertheless, stratification according to mechanism of failure and bioprostheses size showed a major influence on clinical outcomes after valve-in-valve implantation. Since specific label sizes of surgical valves such as the 19 mm were not common (2.4%), we were not powered to compare different surgical valve sizes without clustering cases into subgroups. Nevertheless, dividing surgical bioprostheses into small, intermediate, and large valve sizes, in accordance with previous reports, is clinically relevant and showed clinical significance when defining small valve size as those having a label size of 21 mm or smaller.^{34,35}

Study results reveal that PPM of the implanted transcatheter heart valve device during valve-in-valve procedures did not influence 1-year survival. However, analyses were limited by lack of echocardiographic data immediately after surgical implantation (median of 9 years before the valve-in-

valve procedure) that would have enabled evaluation of PPM of the implanted surgical valve. Therefore, a clear differentiation between degeneration of the surgical bioprosthesis and PPM is challenging.

Although dozens of baseline medical and echocardiographic parameters were included in the analyses (Table 1, Table 2, and Table 3 and eTables 2 and 3 in the Supplement), analyses is limited by lack of several parameters known to be related to clinical outcomes in patients with structural aortic valve disease, including left ventricular mass index, diastolic function, ischemic cardiomyopathy, and frailty.

Conclusions

In this registry of patients who underwent transcatheter valve-in-valve implantation for degenerated bioprosthetic aortic valves, overall 1-year survival was 83.2%. Survival was lower among patients with small bioprostheses and those with predominant surgical valve stenosis.

ARTICLE INFORMATION

Author Affiliations: St Paul's Hospital, Vancouver, British Columbia, Canada (Dvir, Webb, Barbanti); German Heart Center, Munich, Germany (Bleiziffer); Deutsches Herzzentrum Berlin, Berlin, Germany (Pasic); Washington Hospital Center, Washington, DC (Waksman); Columbia University Medical Center/New York Presbyterian Hospital and the Cardiovascular Research Foundation, New York, New York (Kodali, Leon); San Raffaele Scientific Institute, Milan, Italy (Latib); Asklepios Clinics St Georg, Hamburg, Germany (Schaefer); Quebec Heart and Lung Institute, Quebec City, Quebec, Canada (Rodés-Cabau); University Heart Center Hamburg, Hamburg, Germany (Treede); Department of Interventional Cardiology at McGill University Health Centre, Montreal, Quebec, Canada (Piazza); Sussex Cardiac Centre, Brighton, England (Hildick-Smith); Hospital Bichat, Paris, France (Himbert); Kerckhoff Heart Center, Bad Nauheim, Germany (Walther); Universitaetsklinikum Regensburg, Regensburg, Germany (Hengstenberg); Odense University Hospital, Odense, Denmark (Nissen); University of Heidelberg, Heidelberg, Germany (Bekeredjian); Hemodynamic and Invasive Cardiology Unit, IRCCS Istituto Clinico Humanitas, Milan, Italy. (Presbitero); University Hospital of Lausanne, Lausanne, Switzerland (Ferrari); Sheba Medical Center, Ramat Gan, Israel (Segev); Leids Universitair Medisch Centrum, Leiden, the Netherlands (de Weger); Bern University Hospital, Bern, Switzerland (Windecker); Royal Brompton Hospital, London, England (Moat); Department of Cardiac, Thoracic, and Vascular Sciences, University of Padua, Padua, Italy (Napodano); University Heart Center Dresden, Dresden, Germany (Wilbring); G. Pasquinucci Hospital, Massa, Italy (Cerillo); St George's Hospital, London, England (Brecker, Laborde); Clinique Pasteur, Toulouse, France (Tchetche); Hopital Jacques Cartier, Massy, France (Lefèvre); Ospedale Niguarda Ca'Granda, Milan, Italy (De Marco); Azienda Ospedaliera Spedali Civili di Brescia, Brescia, Italy (Fiorina); Azienda Ospedaliero-Universitaria Pisana, Pisa, Italy (Petronio); Hospital de Santa Cruz, Lisbon, Portugal (Teles); Clinical

Institute S. Ambrogio, Milan, Italy (Testa); Rabin Medical Center and Tel Aviv University, Tel Aviv, Israel (Kornowski).

Author Contributions: Dr Dvir had full access to all of the data in the study and takes responsibility for the integrity of the data and the accuracy of the data analysis.

Study concept and design: Dvir, Webb, Bleiziffer, Pasic, Barbanti, Latib, Hengstenberg, Presbitero, Brecker, Laborde, Kornowski.

Acquisition, analysis, or interpretation of data: Dvir, Webb, Pasic, Waksman, Kodali, Barbanti, Latib, Schaefer, Rodés-Cabau, Treede, Piazza, Hildick-Smith, Himbert, Walther, Hengstenberg, Nissen, Bekeredjian, Presbitero, Ferrari, Segev, Weger, Windecker, Moat, Napodano, Wilbring, Cerillo, Brecker, Tchetche, Lefèvre, De Marco, Fiorina, Petronio, Teles, Testa, Laborde, Leon, Kornowski.

Drafting of the manuscript: Dvir, Webb, Pasic, Laborde, Leon, Kornowski.

Critical revision of the manuscript for important intellectual content: Dvir, Webb, Bleiziffer, Pasic, Waksman, Kodali, Barbanti, Latib, Schaefer, Rodés-Cabau, Treede, Piazza, Hildick-Smith, Himbert, Walther, Hengstenberg, Nissen, Bekeredjian, Presbitero, Ferrari, Segev, Weger, Windecker, Moat, Napodano, Wilbring, Cerillo, Brecker, Tchetche, Lefèvre, De Marco, Fiorina, Petronio, Teles, Testa.

Statistical analysis: Dvir, Webb, Pasic, Barbanti, Napodano, Kornowski.

Administrative, technical, or material support: Dvir, Webb, Pasic, Schaefer, Treede, Piazza, Hildick-Smith, Hengstenberg, Nissen, Presbitero, Ferrari, Segev, Windecker, Wilbring, Cerillo, Brecker, Tchetche, De Marco, Fiorina, Leon, Kornowski.

Study supervision: Webb, Bleiziffer, Pasic, Waksman, Latib, Rodés-Cabau, Treede, Himbert, Walther, Bekeredjian, Brecker, Petronio, Testa, Kornowski.

Conflict of Interest Disclosures: All authors have completed and submitted the ICMJE Form for Disclosure of Potential Conflicts of Interest. Dr Webb reports grants and personal fees from Edwards Lifesciences. Dr Bleiziffer reports serving as proctor for Medtronic and JenaValve. Dr Kodali

reports consultancy for Edwards Lifesciences, Claret Medical, and Merrill Lifesciences and serving on the scientific advisory board for Thubrikar. Dr Latib reports serving on the scientific advisory board for Medtronic and as a consultant and proctor for Direct Flow Medical Inc. Dr Rodés-Cabau reports consultancy for Edwards Lifesciences and St Jude Medical. Dr Piazza reports receipt of grants and serving as a proctor for Medtronic. Dr Hildick-Smith reports personal fees from Medtronic, Edwards Lifesciences, and Boston Scientific. Dr Himbert reports serving as a consultant and proctor for Edwards Lifesciences and Medtronic. Dr Hengstenberg reports lecture/speakers bureau fees and travel reimbursement from Edwards Lifesciences. Dr Segev reports personal fees from Medtronic and Edwards Lifesciences. Dr Windecker reports receipt of grants from St Jude and Biotronik. Dr Moat reports personal fees from Medtronic. Dr Brecker reports serving as a proctor for Medtronic. Dr Lefèvre reports serving as a proctor and receipt of fees for Edwards Lifesciences and travel reimbursement from Directflow and Symetis. Dr Petronio reports serving as a proctor for Medtronic. Dr Teles reports personal fees from Medtronic, Abbott, and Cordis. No other disclosures were reported.

Additional Contributions: We thank Rebecca Torguson, MA, and Fang Chen, PhD, from Washington Hospital Center, Washington, DC, for their uncompensated assistance in analyzing the registry data.

REFERENCES

1. Brown JM, O'Brien SM, Wu C, Sikora JA, Griffith BP, Gammie JS. Isolated aortic valve replacement in North America comprising 108 687 patients in 10 years: changes in risks, valve types, and outcomes in the Society of Thoracic Surgeons National Database. *J Thorac Cardiovasc Surg*. 2009;137(1):82-90.
2. Brennan JM, Edwards FH, Zhao Y, et al; DECODE AVR Research Team. Long-term safety and effectiveness of mechanical vs biologic aortic valve prostheses in older patients: results from the

- Society of Thoracic Surgeons Adult Cardiac Surgery National Database. *Circulation*. 2013;127(16):1647-1655.
3. David TE, Ivanov J, Armstrong S, Feindel CM, Cohen G. Late results of heart valve replacement with the Hancock II bioprosthesis. *J Thorac Cardiovasc Surg*. 2001;121(2):268-277.
 4. Glower DD, Landolfo KP, Cheruvu S, et al. Determinants of 15-year outcome with 1119 standard Carpentier-Edwards porcine valves. *Ann Thorac Surg*. 1998;66(6)(suppl):S44-S48.
 5. Maganti M, Rao V, Armstrong S, Feindel CM, Scully HE, David TE. Redo valvular surgery in elderly patients. *Ann Thorac Surg*. 2009;87(2):521-525.
 6. Kirsch M, Nakashima K, Kubota S, Houël R, Hillion ML, Loisanche D. The risk of reoperative heart valve procedures in Octogenarian patients. *J Heart Valve Dis*. 2004;13(6):991-996.
 7. Leon MB, Smith CR, Mack M, et al; PARTNER Trial Investigators. Transcatheter aortic-valve implantation for aortic stenosis in patients who cannot undergo surgery. *N Engl J Med*. 2010;363(17):1597-1607.
 8. Smith CR, Leon MB, Mack MJ, et al; PARTNER Trial Investigators. Transcatheter vs surgical aortic-valve replacement in high-risk patients. *N Engl J Med*. 2011;364(23):2187-2198.
 9. Kodali SK, Williams MR, Smith CR, et al; PARTNER Trial Investigators. Two-year outcomes after transcatheter or surgical aortic-valve replacement. *N Engl J Med*. 2012;366(18):1686-1695.
 10. Makkar RR, Fontana GP, Jilaihawi H, et al; PARTNER Trial Investigators. Transcatheter aortic-valve replacement for inoperable severe aortic stenosis. *N Engl J Med*. 2012;366(18):1696-1704.
 11. Gilard M, Eltchaninoff H, Lung B, et al; FRANCE 2 Investigators. Registry of transcatheter aortic-valve implantation in high-risk patients. *N Engl J Med*. 2012;366(18):1705-1715.
 12. Webb JG, Wood DA, Ye J, et al. Transcatheter valve-in-valve implantation for failed bioprosthetic heart valves. *Circulation*. 2010;121(16):1848-1857.
 13. Khawaja MZ, Haworth P, Ghuran A, et al. Transcatheter aortic valve implantation for stenosed and regurgitant aortic valve bioprostheses CoreValve for failed bioprosthetic aortic valve replacements. *J Am Coll Cardiol*. 2010;55(2):97-101.
 14. Piazza N, Bleiziffer S, Brockmann G, et al. Transcatheter aortic valve implantation for failing surgical aortic bioprosthetic valve: from concept to clinical application and evaluation (part 2). *JACC Cardiovasc Interv*. 2011;4(7):733-742.
 15. Bedogni F, Laudisa ML, Pizzocri S, et al. Transcatheter valve-in-valve implantation using Corevalve Revalving System for failed surgical aortic bioprostheses. *JACC Cardiovasc Interv*. 2011;4(11):1228-1234.
 16. Eggebrecht H, Schäfer U, Treede H, et al. Valve-in-valve transcatheter aortic valve implantation for degenerated bioprosthetic heart valves. *JACC Cardiovasc Interv*. 2011;4(11):1218-1227.
 17. Dvir D, Webb J, Brecker S, et al. Transcatheter aortic valve replacement for degenerative bioprosthetic surgical valves: results from the global valve-in-valve registry. *Circulation*. 2012;126(19):2335-2344.
 18. Bonow RO, Carabello BA, Chatterjee K, et al; 2006 Writing Committee Members; American College of Cardiology/American Heart Association Task Force. Focused update incorporated into the ACC/AHA 2006 guidelines for the management of patients with valvular heart disease: a report of the American College of Cardiology/American Heart Association Task Force on Practice Guidelines. *Circulation*. 2008;118(15):e523-e661.
 19. Gurvitch R, Cheung A, Ye J, et al. Transcatheter valve-in-valve implantation for failed surgical bioprosthetic valves. *J Am Coll Cardiol*. 2011;58(21):2196-2209.
 20. Leon MB, Piazza N, Nikolsky E, et al. Standardized endpoint definitions for Transcatheter Aortic Valve Implantation clinical trials: a consensus report from the Valve Academic Research Consortium. *J Am Coll Cardiol*. 2011;57(3):253-269.
 21. Pibarot P, Dumesnil JG. Prosthesis-patient mismatch: definition, clinical impact, and prevention. *Heart*. 2006;92(8):1022-1029.
 22. Webb JG, Dvir D. Transcatheter aortic valve replacement for bioprosthetic aortic valve failure: the valve-in-valve procedure. *Circulation*. 2013;127(25):2542-2550.
 23. Nishida T, Tominaga R. A look at recent improvements in the durability of tissue valves. *Gen Thorac Cardiovasc Surg*. 2013;61(4):182-190.
 24. Wheatley DJ, Fisher J, Reece IJ, Spyt T, Breeze P. Primary tissue failure in pericardial heart valves. *J Thorac Cardiovasc Surg*. 1987;94(3):367-374.
 25. Head SJ, Mokhles MM, Osnabrugge RL, et al. The impact of prosthesis-patient mismatch on long-term survival after aortic valve replacement: a systematic review and meta-analysis of 34 observational studies comprising 27 186 patients with 133 141 patient-years. *Eur Heart J*. 2012;33(12):1518-1529.
 26. Flameng W, Herregods MC, Vercauteren M, Herijgers P, Bogaerts K, Meuris B. Prosthesis-patient mismatch predicts structural valve degeneration in bioprosthetic heart valves. *Circulation*. 2010;121(19):2123-2129.
 27. Tasca G, Mhagna Z, Perotti S, et al. Impact of prosthesis-patient mismatch on cardiac events and midterm mortality after aortic valve replacement in patients with pure aortic stenosis. *Circulation*. 2006;113(4):570-576.
 28. Urso S, Sadaba R, Vives M, et al. Patient-prosthesis mismatch in elderly patients undergoing aortic valve replacement: impact on quality of life and survival. *J Heart Valve Dis*. 2009;18(3):248-255.
 29. Rosenhek R, Binder T, Maurer G, Baumgartner H. Normal values for Doppler echocardiographic assessment of heart valve prostheses. *J Am Soc Echocardiogr*. 2003;16(11):1116-1127.
 30. Pibarot P, Dumesnil JG. Prosthetic heart valves: selection of the optimal prosthesis and long-term management. *Circulation*. 2009;119(7):1034-1048.
 31. Peterson MD, Borger MA, Feindel CM, David TE. Aortic annular enlargement during aortic valve replacement: improving results with time. *Ann Thorac Surg*. 2007;83(6):2044-2049.
 32. Castro LJ, Arcidi JM Jr, Fisher AL, Gaudiani VA. Routine enlargement of the small aortic root: a preventive strategy to minimize mismatch. *Ann Thorac Surg*. 2002;74(1):31-36.
 33. Sommers KE, David TE. Aortic valve replacement with patch enlargement of the aortic annulus. *Ann Thorac Surg*. 1997;63(6):1608-1612.
 34. Connolly HM, Oh JK, Schaff HV, et al. Severe aortic stenosis with low transvalvular gradient and severe left ventricular dysfunction: result of aortic valve replacement in 52 patients. *Circulation*. 2000;101(16):1940-1946.
 35. He GW, Grunkemeier GL, Gately HL, Furnary AP, Starr A. Up to 30-year survival after aortic valve replacement in the small aortic root. *Ann Thorac Surg*. 1995;59(5):1056-1062.