

# vaccine-specific CD8 T cells and increases regression of bladder tumor

Sonia Domingos-Pereira<sup>1</sup>, Rim Hojeij<sup>1</sup>, Erica Reggi<sup>1</sup>, Laurent Derré<sup>1</sup>, Mathieu F Chevalier<sup>1</sup>, Pedro Romero<sup>2</sup>, Patrice Jichlinski<sup>1</sup>, and Denise Nardelli-Haeffliger<sup>1,\*</sup>

<sup>1</sup>Dept. Urology; Lausanne University Hospital (CHUV); Lausanne, Switzerland; <sup>2</sup>Ludwig Center for Cancer Research of University of Lausanne; Lausanne, Switzerland

**Keywords:** bacterial immunostimulant, bladder cancer, combinatorial therapy, therapeutic vaccination, Salmonella Ty21a

**Abbreviations:** BCG, Bacillus Calmette Guerin; BMDC, bone marrow-derived dendritic cell; C5a, complement component 5a; ESL, E-selectin ligands; IVAG, intravaginal; IVES, intravesical; GM, genital mucosa; NMIBC, non-muscle invasive bladder cancer; PBS, phosphate buffered saline; PE, phycoerythrin; PIC, poly (I:C); s.c., subcutaneously; SEM, standard error of the mean; TLR, toll-like receptor; TUR, transurethral resection.

The efficacy of antitumoral responses can be increased using combinatorial vaccine strategies. We recently showed that vaccination could be optimized by local administration of diverse molecular or bacterial agents to target and augment antitumoral CD8 T cells in the genital mucosa (GM) and increase regression of cervical cancer in an animal model. Non muscle-invasive bladder cancer is another disease that is easily amenable to local therapies. In contrast to data obtained in the GM, in this study we show that intravesical (IVES) instillation of synthetic toll-like receptor (TLR) agonists only modestly induced recruitment of CD8 T cells to the bladder. However, IVES administration of Ty21a, a live bacterial vaccine against typhoid fever, was much more effective and increased the number of total and vaccine-specific CD8 T cells in the bladder approximately 10 fold. Comparison of chemokines induced in the bladder by either CpG (a TLR-9 agonist) or Ty21a highlighted the preferential increase in complement component 5a, CXCL5, CXCL2, CCL8, and CCL5 by Ty21a, suggesting their involvement in the attraction of T cells to the bladder. IVES treatment with Ty21a after vaccination also significantly increased tumor regression compared to vaccination alone, resulting in 90% survival in an orthotopic murine model of bladder cancer expressing a prototype tumor antigen. Our data demonstrate that combining vaccination with local immunostimulation may be an effective treatment strategy for different types of cancer and also highlight the great potential of the Ty21a vaccine, which is routinely used worldwide, in such combinatorial therapies.

## Introduction

Although cancer vaccines have been considered a promising therapeutic approach, their general lack of clinical efficacy as a single therapy argues for the use of combinatorial protocols. Even when antitumor T cells are generated, trafficking to the tumor site may be limited.<sup>1</sup> This can be improved by using appropriate vaccine administration routes, allowing targeting of relevant tumor sites through specific mucosal homing or cancer site retention programs.<sup>2-5</sup> An alternative approach, irrespective of the immunization route, is to enhance T-cell attraction to the tumor site through the local application of selected chemokines<sup>6</sup> or Toll-like receptor (TLR) agonists that are able to modify the expression of selectins, integrins, chemokines, and chemokine receptors.<sup>7,8</sup> Along this line, we recently reported that intravaginal (IVAG) administration of CpG (a TLR-9 agonist) resulted in

the accumulation of CD8 T cells co-expressing CCR5 and CXCR3 chemokine receptors and E-selectin ligands (ESL), most probably through CpG-induced expression of CCL5, CXCL9, CXCL10, CXCL11, and/or E-selectin.<sup>9</sup> Most importantly, in a murine model of cervical cancer, this strategy resulted in more efficient genital tumor regression than vaccination alone.<sup>9</sup> Moreover, we have also shown that live bacteria, such as *Salmonella* attenuated vaccine strains, are more potent immunostimulants than CpG for the recruitment of vaccine-specific CD8 T cells to the genital mucosa (GM) of mice.<sup>10</sup>

Here, we explore how such therapeutic approaches can be extended to other cancers. Bladder cancer is a common urologic malignancy that is in part caused by smoking habits and exposure to industrial chemicals and has an increased incidence in the elderly population.<sup>11</sup> Seventy percent of bladder cancers are diagnosed as non muscle-invasive and are

\*Correspondence to: Denise Nardelli-Haeffliger; Email: [dnardell@hospvd.ch](mailto:dnardell@hospvd.ch)  
Submitted: 09/23/2014; Revised: 02/02/2015; Accepted: 02/03/2015  
<http://dx.doi.org/10.1080/2162402X.2015.1016697>

treated by transurethral resection (TUR). However, they have a high propensity to recur and/or progress to invasive cancer. Interestingly, the association between tuberculosis and a lower frequency of cancer has led to use of the Bacillus Calmette Guerin (BCG) vaccine against tuberculosis as a standard intravesical (IVES) treatment after TUR for high-risk non muscle-invasive bladder cancer (NMIBC) to reduce both recurrence and progression.<sup>12,13</sup> Repeated BCG treatments are however associated with significant side effects and treatment resistance, arguing for alternative or complementary therapies such as vaccination.<sup>14</sup> In the absence of a murine bladder tumor model expressing a tumor antigen relevant in humans, we have used an orthotopic model expressing E7 as a prototype tumor antigen and a cognate E7 vaccine<sup>3</sup> to explore the ability of either synthetic or bacterial IVES TLR agonists to increase CD8 T-cell recruitment to the bladder and improve bladder tumor regression.

## Results

### IVES instillation of CpG after subcutaneous E7 vaccination modestly increased the number of total and vaccine-specific CD8 T cells in the bladder but did not influence bladder tumor regression

Groups of C57BL/6 mice were subcutaneously (s.c.) immunized with a long synthetic E7 peptide together with adjuvants<sup>15</sup> or additionally received an IVES instillation of CpG 5 d after immunization. Flow cytometric analysis of bladder cell suspensions at day 9 showed a significant (approximately 2-fold) increase in both total and vaccine-specific (TetE7<sup>+</sup>) CD8 T cells, but not in CD4 T cells (Fig. 1A), compared to the group that did not receive IVES CpG instillation. In contrast, systemic T cell levels were not affected (Table 1). IFN- $\gamma$  ELISPOT analysis confirmed the significant increase induced by IVES CpG ( $13 \pm 2$  [geometric mean  $\pm$  standard error of the mean] IFN- $\gamma$  secreting CD8 T cells/ $10^5$  bladder cells, compared to  $5 \pm 1$  in the absence of IVES immunostimulation,  $P < 0.01$ , Fig. 1B). This increase is, however, modest compared to the 5-fold increase we previously reported after IVAG CpG.<sup>9</sup> Furthermore, and in contrast to the data obtained in the GM,<sup>9</sup> successive IVES applications of CpG (days 6, 9, and 12) were not able to sustain a higher vaccine-specific CD8 T-cell response in the bladder (see day 15 in Fig. 1B). We further tested whether successive IVES CpG instillations after vaccination would enhance the regression of bladder tumors. For this purpose, mice were first IVES instilled with E7- and luciferase-expressing tumor cells (TC-1 luc) and at day 8, when bioluminescent tumors were detected, treated with vaccination alone or vaccination followed by IVES CpG treatment (3 doses at 5, 8 and 11 d after vaccination). IVES CpG alone had no effect on tumor regression compared to untreated mice. As expected, vaccination resulted in significant tumor regression and survival of 70% of the mice ( $P < 0.001$ ), although no benefit of the additional IVES CpG treatment was observed (Fig. 1C).

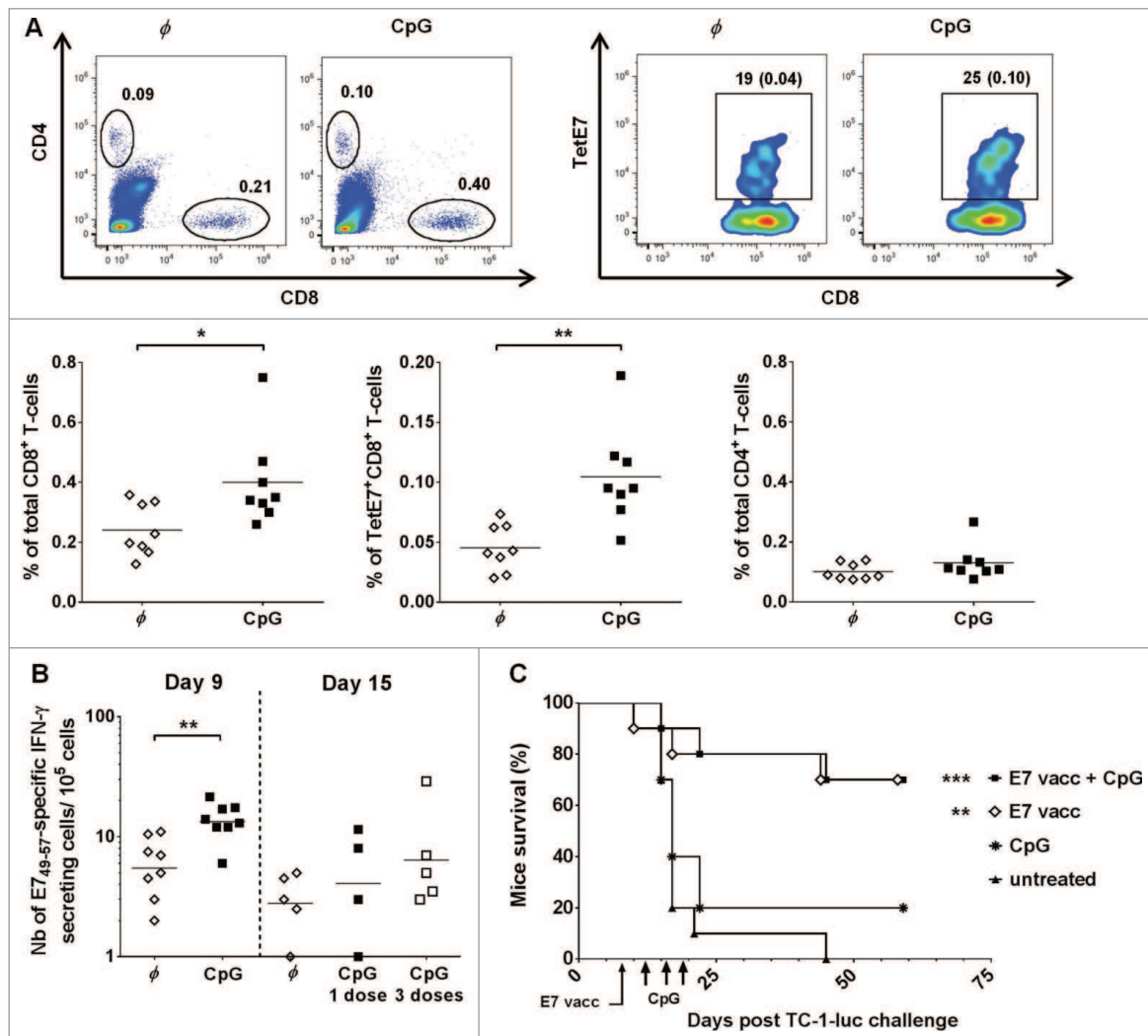
### Immunostimulation by IVES Ty21a live bacteria after vaccination greatly increased the number of total and vaccine-specific CD8 T cells in bladder

As the bladder may be more responsive to other TLR agonists, we decided to test the effects of a synthetic TLR-3 agonist, poly (I:C) (PIC), and 2 bacterial vaccines (BCG, which is used in NMIBC immunotherapy, and Ty21a, the live attenuated *Salmonella enterica* serovar Typhi vaccine against typhoid fever), as we had previously shown that IVAG-attenuated *Salmonella* strains increased the number of effector vaccine-specific CD8 T cells in the GM.<sup>10</sup> Groups of E7-vaccinated mice received IVES PIC, BCG, or Ty21a 5 d after vaccination. IFN- $\gamma$  ELISPOT analysis of bladder cell suspensions (Fig. 2) showed a significant (4- to 5-fold) increase in vaccine-specific effector CD8 T-cells following treatment with PIC ( $20 \pm 4$  IFN- $\gamma$ -secreting CD8 T cells/ $10^5$  bladder cells) and BCG ( $15 \pm 5$ ) compared to vaccination alone ( $4 \pm 1$ ,  $P < 0.01$  and  $P < 0.05$ , respectively). Interestingly, however, Ty21a bacteria resulted in a greater than 10-fold increase in the number of vaccine-specific effector CD8 T cells in bladder ( $58 \pm 9$  IFN- $\gamma$ -secreting CD8 T cells/ $10^5$  bladder cells;  $P < 0.0001$ ). Live Ty21a bacteria were required as heat-killed Ty21a bacteria were less efficient ( $24 \pm 3$  IFN- $\gamma$ -secreting CD8 T cells/ $10^5$  bladder cells Fig. 2,  $P < 0.01$  by Student t test). Flow cytometric analysis of IVES Ty21a paralleled the ELISPOT data with an approximately 10-fold increase in both total and vaccine-specific CD8 T-cells ( $P < 0.001$ ), confirming that the increase in IFN- $\gamma$ -secreting cells measured by ELISPOT corresponded to enhanced recruitment of CD8 T cells (Fig. 3A).

IVES Ty21a in the absence of vaccination induced an approximately 4-fold increase in total CD8 T cells in the bladder. Interestingly, a synergistic effect was observed between local immunostimulation and systemic vaccination with respect to the local recruitment of CD8 T cells; vaccination alone augmented the total number of CD8 T cells in the bladder approximately 3-fold, whereas combination with IVES Ty21a resulted in a 40-fold increase (mean of  $\sim 2\%$  of total CD8 T cells compared to 0.05% in naïve bladder). In contrast to CpG and PIC,<sup>9</sup> IVES Ty21a also induced a modest 3-fold increase in CD4 T-cells, either alone or following vaccination (Fig. 3A), but once again IVES immunostimulation had no systemic effect (Table 1). The increased number of vaccine-specific effector CD8 T cells in bladder was maintained at least until day 15 after a single IVES Ty21a dose ( $49 \pm 8/10^5$  bladder cells at day 9, compared to  $55 \pm 10$  at day 15) and successive IVES Ty21 resulted in a similar outcome (see Fig. 3B).

### IVES Ty21a immunostimulation preferentially induced C5a, CXCL5, CXCL2, CCL8, and CCL5

CD8 T cells accumulating in the GM upon IVAG CpG treatment were shown to co-express CXCR3 and CCR5 as well as ESL.<sup>9</sup> We first examined the levels of these chemokine receptors and ESL on the T cells that were attracted to the bladder upon IVES CpG or Ty21a (Fig. 4). Our data show that ESL was expressed on approximately 40% and 20% of CD4 and CD8 T cells in the bladder, respectively, and that both frequencies were significantly increased to 50–60% by IVES CpG or IVES Ty21a,



**Figure 1.** IVES CpG after E7 immunization modestly increased the number of E7-specific and total CD8 T cells in bladder but did not influence bladder tumor regression. Groups of female C57BL/6 mice were immunized s.c. with the E7 vaccine. Five days later, mice were either left untreated ( $\phi$ , white diamond) or received IVES with 1 (day 6, black square) or 3 (day 6, 9 and 12, white square) instillations of 100  $\mu$ g CpG. Bladder cell suspensions were prepared 3 d after the last IVES CpG and analyzed by flow cytometry (A) or by IFN- $\gamma$  ELISPOT assay (B). Representative flow cytometric analysis of bladder cells is shown in the upper panel of (A) and the percentage of TetE7+CD8+ T cells/total cells is indicated in parentheses. Horizontal bars represent mean percent in panel (A) and geometric mean percent in panel (B). Significant differences between groups of mice are indicated by \* $P < 0.05$  and \*\* $P < 0.01$ . Two groups of tumor-bearing mice were left untreated (black triangles) or received IVES CpG (black asterisk), while 2 other groups received s.c. E7 vaccine alone (white diamonds) or followed by IVES CpG (black square) (C). Significant differences in mouse survival between each treatment and control are indicated by \*\* $P = 0.0012$  and \*\*\* $P = 0.0003$  following an adjusted log-rank test.

suggesting that E-selectin may not be involved in preferential recruitment of CD8 T cells *versus* CD4 T cells by either IVES CpG or Ty21a in the bladder. CCR5 and CXCR3 were expressed on less than 25% of the CD4 T cells and were not significantly affected by IVES CpG or Ty21a. These chemokine receptors were expressed by approximately 40% of the CD8 T cells, with a slightly increased frequency after IVES CpG although this was not significant (40–55% for CCR5 and

45–55% for CXCR3) and was not affected by Ty21a. In all cases, less than 10% of the CD4 T cells co-expressed CCR5 and CXCR3, whereas IVES CpG slightly increased the frequency of CCR5<sup>+</sup>CXCR3<sup>+</sup>CD8 T cells (37% compared to 27% in unstimulated or IVES Ty21-treated bladder), which may account for the modest recruitment of CD8 T cells upon IVES CpG (Fig. 1B). This suggests that some CXCR3/CCR5 ligand chemokines (CCL5, CXCL9, CXCL10, and/or CXCL11) may be

**Table 1.** CD8 T-cell responses in the spleen of E7-vaccinated mice after challenge with different IVES immunostimulants

Ives immunostimulants	% of total CD8 <sup>a</sup>	% of TetE7 <sup>+</sup> CD8 <sup>a</sup>
None (n = 7)	14.0 ± 1.6	0.50 ± 0.12
CpG (n = 4)	10.7 ± 0.5	0.25 ± 0.03
PIC (n = 4)	15.9 ± 0.6	0.64 ± 0.23
BCG (n = 5)	11.9 ± 0.6	0.57 ± 0.13
Ty21a (n = 6)	12.6 ± 1.2	0.82 ± 0.19
Ty21a HK <sup>b</sup> (n = 3)	14.1 ± 0.5	0.72 ± 0.16

<sup>a</sup>mean ± SEM; <sup>b</sup>heat-killed.

induced by CpG. Knowledge of chemokine levels in the bladder is limited to chemokine expression data obtained upon repeated IVES instillation of BCG or lactobacillus<sup>16</sup> or upon IVES instillation of lipopolysaccharide.<sup>17</sup> To gain more insight, we used a chemokine protein array to determine the levels of 25 mouse chemokines 24 h after IVES instillation of phosphate buffered saline (PBS), CpG, or Ty21a (see Table 2). All tested chemokines could be detected in the bladder at variable levels over background (mean ± SD, 8.3 ± 3 pixels in PBS control animals). Interestingly, all of the ligands of CXCR3 and CCR5 were detected at low levels (9 to 12 pixels), with only CXCL10 being

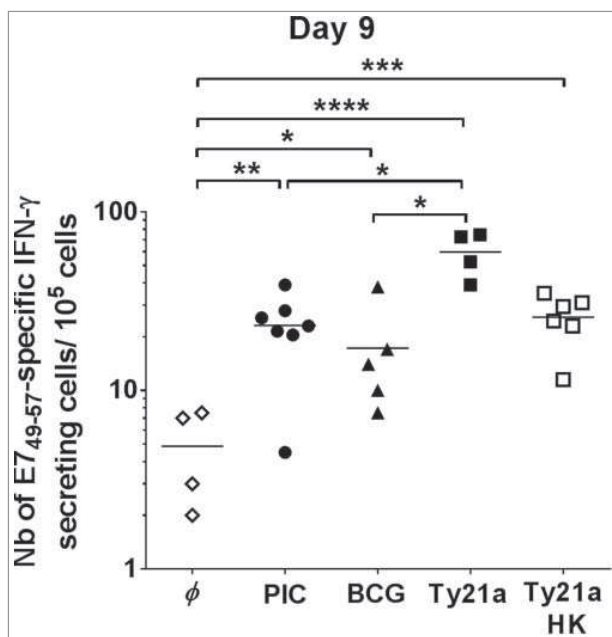
increased by IVES CpG (1.8-fold) but not by Ty21a, which is in agreement with the above findings. In addition, CCL6 and CCL9/10 were similarly induced by CpG and Ty21a (1.5- and 4- to 5-fold, respectively), suggesting that these chemokines are not involved in the specific recruitment of CD8 T cells upon IVES Ty21a. In contrast, complement component 5/5a (C5a), CXCL5, and CXCL2a were preferentially increased following Ty21a immunostimulation (1.4- to 2-fold). When considering the effect of IVES Ty21a on vaccination, comparison of the chemokine levels (Table 3) confirmed an increase in C5a and CXCL5 by IVES Ty21a, and also showed an increase in CCL8 and CCL5 (1.5- to 1.7-fold). We therefore examined the expression of receptors of C5a (C5aR), CXCL5 and CXCL2 (CXCR2), CCL8 and CCL5 (CCR1, Fig. 4 for CCR5) on CD4 and CD8 T cells in the bladder (Table 4). Our data show that fewer than 10% of either CD4 or CD8 T cells expressed these receptors; this proportion decreased upon IVES Ty21a with the exception of the percentage of C5aR-expressing CD4 T cells, which increased non-significantly (2-fold) to 35%. This suggests that the chemokines that are increased by IVES Ty21a may not directly mediate preferential attraction of CD8 T cells to the bladder.

#### IVES Ty21a immunostimulation after vaccination significantly improved bladder tumor regression and mouse survival

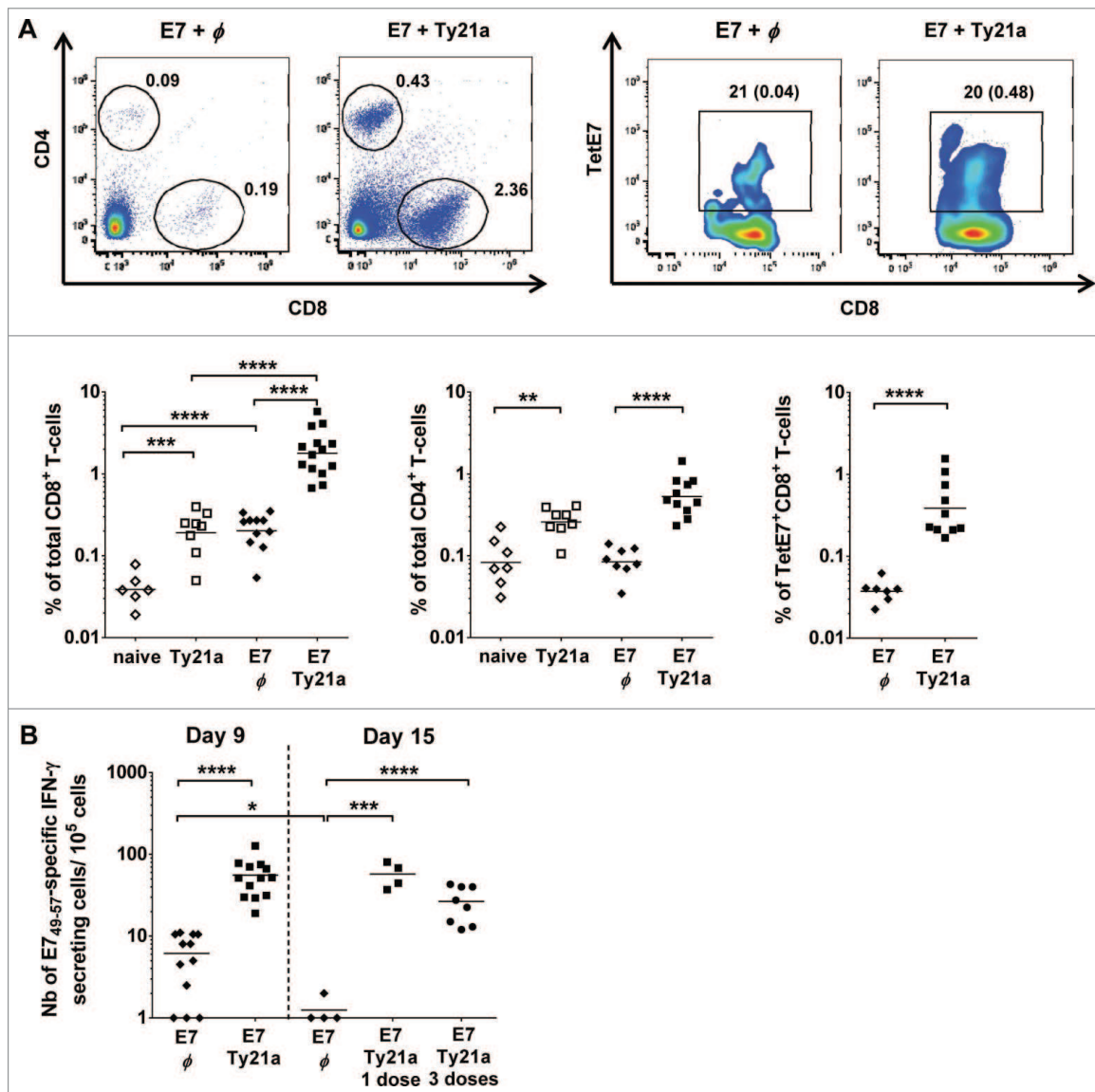
Finally, we evaluated the therapeutic impact of IVES Ty21a immunostimulation on bladder tumor regression. In the first experiment, groups of 10 bladder tumor-bearing mice received 3 consecutive IVES Ty21a doses at days 13, 16, and 19 alone or after vaccination (day 8), vaccination alone, or were left untreated (Fig. 5A). Our data show that both vaccination alone and the combinatorial treatment were significantly effective, resulting in 60% and 90% survival respectively ( $P < 0.01$  compared to untreated mice, adjusted log-rank test). In contrast, IVES Ty21a treatment alone was not significantly effective. Because our ELISPOT data showed similar vaccine-specific CD8 T cell recruitment upon a single IVES Ty21a administration, we further tested this protocol in a second experiment. Interestingly, the results roughly paralleled the previous experiment, resulting in 60% survival after vaccination alone and 90% survival with the combinatorial treatment (Fig. 5B), confirming that a single IVES Ty21a immunostimulation after vaccination is sufficient to increase antitumor T cells locally and provide almost full tumor regression. Importantly, our data show that, irrespective of the number of doses of IVES Ty21a used, the combinatorial treatment was significantly more efficient than vaccination alone ( $P < 0.05$  by Chi square test, Fig. 5C).

## Discussion

Despite intensive research, immunotherapy of cancer remains highly challenging and combination approaches are becoming more and more appealing to improve clinical outcomes. Using a preclinical model of bladder cancer, we show that IVES



**Figure 2.** Increase in E7-specific IFN- $\gamma$ -secreting cells in the bladder by different IVES immunostimulants after E7 immunization. Groups of female C57BL/6 mice were immunized s.c. with the E7 vaccine. Five days later, mice were either left untreated ( $\phi$ , white diamond) or received IVES PIC (black circles), BCG (black triangles), live Ty21a (black squares), or heat-killed Ty21a (white squares). After a further 3 days, bladder cell suspensions were prepared and analyzed by IFN- $\gamma$  ELISPOT assay. Horizontal bars represent geometric mean percent. Significant differences from control mice are indicated by \* $P < 0.05$ , \*\* $P < 0.01$ , or \*\*\*\* $P < 0.0001$ .

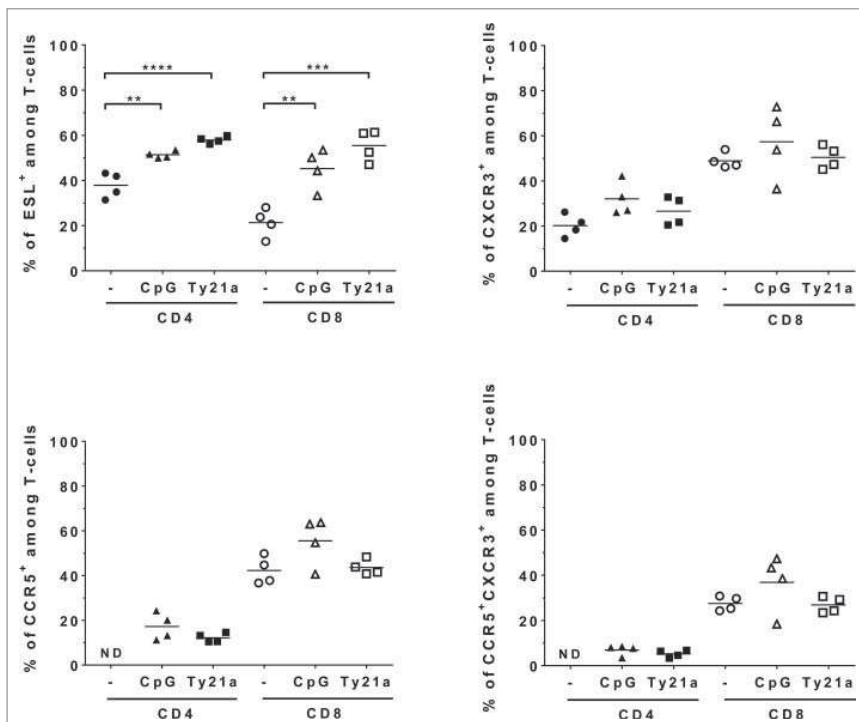


**Figure 3.** IVES Ty21a after E7 immunization strongly increased the number of T cells in bladder. Groups of naïve (white symbols) or s.c. E7-immunized (black symbols) female C57BL/6 mice received IVES Ty21a 5 days after vaccination in 1 (day 6, black square) or 3 (day 6, 9, and 12, black circles) instillations, or were left untreated ( $\phi$ , diamonds). Bladder cell suspensions prepared 3 d after the last treatment were analyzed by flow cytometry (A) or by IFN- $\gamma$  ELISPOT (B) assay. A representative flow cytometric analysis of bladder cells from vaccinated mice is shown in (A) (upper panel) and the percentage of TetE7+CD8+ T cells is indicated in parentheses. Horizontal bars represent geometric mean percent. Significant differences between groups of mice are indicated by \* $P < 0.05$  or \*\* $P < 0.01$ , \*\*\* $P < 0.001$ , or \*\*\*\* $P < 0.0001$ .

immunostimulation with Ty21a bacteria, but not CpG, after tumor antigen vaccination efficiently recruits vaccine-specific CD8 T cells to the bladder, resulting in tumor regression and 90% survival of the mice.

In contrast to the GM, the bladder turned out to be less responsive to the synthetic TLR-9 agonist CpG, at least in terms of induction of chemokines. The modest effect observed on CD8 T-cell recruitment to the bladder was associated with the

induction of fewer and different chemokines by CpG in the bladder (1.5- to 4-fold increase in CCL6, CCL9/10, and CXCL10) compared to the GM, in which 10- to 70-fold increases in CCL2, CCL3, CCL4, CXCL2, and CXCL10 were observed 24 h after IVAG CpG<sup>18</sup> whereas CCL9 and CCL6 were not affected or only poorly induced (1.6-fold at the RNA level for CCL6<sup>19</sup>). In contrast to CXCL10, which may be involved in the recruitment of CXCR3-expressing CD8 T cells, CCL6 and



**Figure 4.** Expression of chemokine receptors and ESL on T cells from bladder upon IVES immunostimulation. Groups of female C57BL/6 mice were immunized s.c. with the E7 vaccine. Five days later, mice were either left untreated (circles) or received IVES CpG (triangles) or Ty21a (squares). Bladder cell suspensions prepared 3 d after immunostimulation were analyzed by flow cytometry. Expression of chemokines and ESL among CD4 T cells (black symbols) or among CD8 T cells (white symbols) is shown. ND: not detectable. Horizontal bars represent geometric mean percent. Significant differences versus control mice are indicated by \*\* $P < 0.01$ , \*\*\* $P < 0.001$ , or \*\*\*\* $P < 0.0001$ .

CCL9 may attract CCR1-expressing macrophages or dendritic cells as shown in the inflamed lung<sup>20</sup> or in the bladder upon IVES BCG treatment.<sup>16</sup> This may account for the vaccination-unrelated tumor regression induced by IVES CpG or BCG in the MB49-bladder tumor model,<sup>21</sup> as well as by Ty21a (our unpublished data), which also induced CCL6 and CCL9 (Table 2). In turn, and in comparison to CpG, Ty21a uniquely induced C5a, CXCL5, and CXCL2, whereas CCL8 and CCL5 are further induced following vaccination. C5a (through the C5aR receptor) and CXCL5/CXCL2 (through the CXCR2 receptor) are primarily chemoattractants for neutrophils,<sup>22,23</sup> although they are also involved in T-cell migration to the intestinal mucosa<sup>24</sup> and to the brain,<sup>25,26</sup> whereas CCL5 and CCL8 can attract monocytes, NK cells, and activated T cells (through CCR5 and CCR1 receptors).<sup>27-29</sup> However, our data show a lower or similar percentage of C5aR-, CXCR2-, CCR1-, and CCR5-expressing CD8 T cells in the bladder with or without IVES Ty21a immunostimulation, suggesting an indirect effect of the cognate chemokines on the preferential increase in CD8 T cells in the bladder.

Ty21a may be mediated by TLR-5. In addition to TLR, it is noteworthy that *Salmonellae enterica* encode 2 type 3 secretion systems that allow the secretion of effector proteins able to trigger proinflammatory host responses and their injection into host cells.<sup>37</sup> It is possible that this secretion system may also contribute to T-cell recruitment in the bladder since live Ty21a were more efficient than heat-killed bacteria, although the TLR-agonist activities of the latter should be similar, or even increased in the case of flagellin.<sup>38</sup>

NMIBC is the most prevalent form of bladder cancer, which in turn represents the second most common urogenital cancer with a lifetime risk of 1 in 26 for men and 1 in 87 for women in the United States. The high recurrence/progression rate of NMIBC contributes considerably to the high socioeconomic burden associated with the management of these patients.<sup>39</sup> Ty21a is a vaccine strain against typhoid fever (Vivotif®) that has been used for decades by the oral route with an excellent safety record<sup>40</sup> and deserves investigation in NMIBC patients. Our data suggest that this vaccine should be added to the list of TLR agonists to be tested in oncologic indications.<sup>41</sup>

Bacteria were recognized as potential immunotherapeutic treatments against cancer more than 100 years ago by William Coley.<sup>30</sup> Later, the association between tuberculosis and a lower frequency of cancer led to use of the BCG vaccine against tuberculosis as a standard IVES treatment for NMIBC.<sup>13</sup> In our setting, we showed that IVES BCG after vaccination also increased the number of effector vaccine-specific CD8 T cells in the bladder, which prompted us to design a clinical trial in which vaccination with a tumor vaccine and IVES BCG are combined (NCT01498172 in ClinicalTrials.gov). This currently ongoing trial is aimed to assess the safety of the therapeutic combination as well as potential enhancement of innate and/or vaccine-specific T-cell responses both systemically and locally in the bladder. Our present findings, however, demonstrate the superior efficacy of Ty21a bacteria as an IVES immunostimulant. Both BCG, which are gram-positive bacteria, and *Salmonella*, which are gram-negative bacteria, can provide TLR-4<sup>31,32</sup> and TLR-9<sup>33,34</sup> agonists. BCG also contains an agonist of TLR-2, whereas *Salmonella* may engage TLR-5 through flagellin.<sup>35</sup> Interestingly, mucosal application of *Salmonella* flagellin induced CXCL2 in the lung,<sup>36</sup> suggesting that the increase in CXCL2 observed in the bladder upon IVES

**Table 2** Chemokine levels in bladder tissue upon IVES immunostimulation

Chemokine	PBS <sup>a</sup>	CpG (fold change <sup>b</sup> )	Ty21a (fold change)
CCL21	13.7	0.7	0.8
CXCL13	9.7	0.9	0.9
CCL6	49.5	<b>1.5</b>	<b>1.4</b>
C5/C5a	11.3	0.9	<b>1.6</b>
CCL28	9.2	0.9	1.0
Chemerin	24.5	0.9	1.0
CCL27	16.5	0.6	0.8
CXCL16	12.5	0.8	1.0
CCL11	12.1	0.7	0.9
CX3CL1	13.1	0.7	0.7
IL-16	51.6	0.5	0.6
CXCL10	10.9	<b>1.8</b>	1.0
CXCL11	10.4	0.8	1.0
CCL2	38.7	0.7	0.9
CXCL1	28.1	0.7	1.0
CXCL5	9.9	0.9	<b>2.0</b>
CCL8	12.0	1.0	1.1
CCL12	52.3	0.6	0.7
CCL22	15.4	0.6	0.7
CXCL9	12.3	0.7	0.8
CCL3/CCL4	10.0	0.9	1.0
CCL9/10	12.2	<b>4.0</b>	<b>5.4</b>
CXCL2	9.3	0.9	<b>1.4</b>
CCL5	9.3	0.9	1.2
CXCL12	15.3	0.8	0.8

<sup>a</sup>Chemokine levels are expressed as mean pixel density, all are significantly higher than background signal + 3SD.

<sup>b</sup>Relative change in chemokine levels between immunostimulant and PBS. Increased chemokine levels between immunostimulants and PBS  $\geq$  1.4-fold are indicated in bold.

**Table 3** Chemokine levels in bladder tissue upon vaccination and IVES immunostimulation

Chemokine	E7 vaccine <sup>a</sup>	E7+Ty21a (fold change <sup>b</sup> )
CCL21	11.1	0.8
CXCL13	6.4	1.1
CCL6	52.1	1.2
C5/C5a	9.7	<b>1.6</b>
CCL28	6.1	0.9
Chemerin	40.8	0.7
CCL27	12.2	1.0
CXCL16	9.0	1.2
CCL11	6.9	1.1
CX3CL1	8.3	1.0
IL-16	35.7	0.9
CXCL10	11.5	1.2
CXCL11	7.7	1.0
CCL2	41.3	0.9
CXCL1	18.1	1.0
CXCL5	5.8	<b>1.7</b>
CCL8	14.0	<b>1.5</b>
CCL12	40.5	1.0
CCL22	9.2	0.9
CXCL9	8.4	0.9
CCL3/CCL4	6.2	1.0
CCL9/10	20.5	<b>3.3</b>
CXCL2	4.9	1.2
CCL5	5.5	<b>1.7</b>
CXCL12	24.7	0.9

<sup>a</sup>Chemokine levels are expressed as mean pixel density; all are significantly higher than background signal + 3SD.

<sup>b</sup>Relative change in chemokine levels between vaccinated mice with and without IVES Ty21a. Increased chemokine levels between vaccinated mice with and without IVES Ty21a  $\geq$  1.5-fold are indicated in bold.

## Materials and Methods

### Immunization and IVES immunostimulation of mice

C57BL/6 wild-type female mice aged 7 to 10 weeks (Charles River) were used in compliance with ethical directives of the Swiss veterinary authorities. The E7<sub>34-98</sub> and E7<sub>49-57</sub> peptides were chemically synthesized by the Protein and Peptide Chemistry Facility of the Institute of Biochemistry (UNIL, Lausanne, Switzerland). Mice were immunized s.c. with the E7 vaccine<sup>42</sup> (50  $\mu$ g E7<sub>34-98</sub>, 0.4  $\mu$ g Heat Labile enterotoxin, kindly provided by Berna-Biotech, Bern,

Switzerland and 10  $\mu$ g CpG, [#1826; 5'-TCCATGACGT TCCTGACGTT-3', Coley Pharmaceutical Group]). IVES immunostimulation was performed by urethral catheterization of deeply anesthetized mice using Introcan 24G/3/4 (Braun, Melsungen, Germany) and instillation of 50  $\mu$ L/mouse of 100  $\mu$ g CpG, 100  $\mu$ g PIC (Sigma-Aldrich or Invivogen), 2–8  $\times$  10<sup>7</sup> CFU of BCG (OncoTICE), 1–5  $\times$  10<sup>8</sup> CFU of attenuated *Salmonella enterica* serovar Typhi Ty21a bacteria<sup>43</sup> (Berna-Biotech) grown to mid-log phase (OD<sub>600</sub> < 0.7) in Luria-Bertani broth (Difco BD).<sup>44</sup>

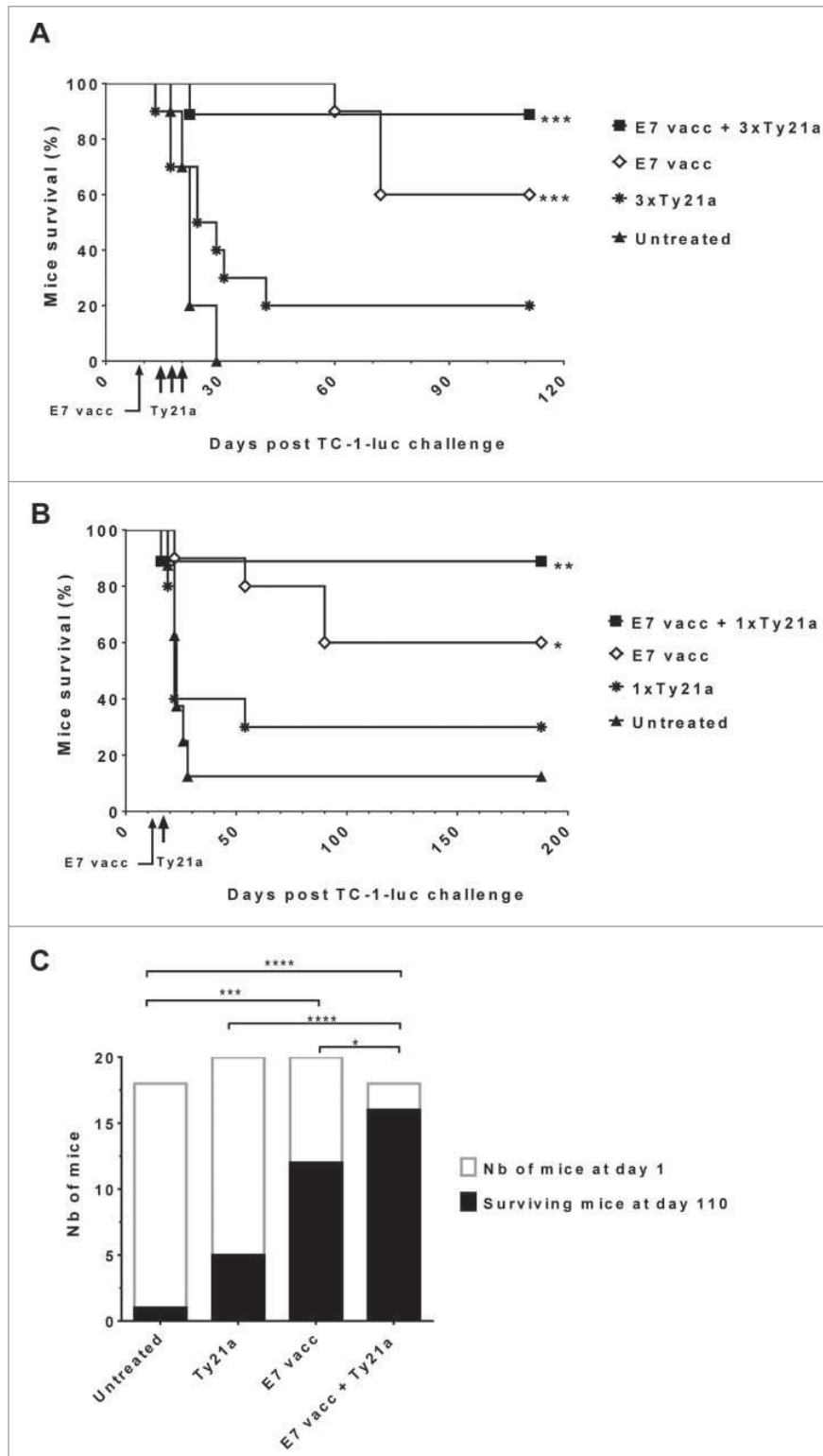
**Table 4** T cells expressing the indicated chemokine receptor in the bladder of E7-vaccinated mice that were IVES challenged with Ty21a

Immunostimulant IVES Chemokine receptor	% of total CD4 <sup>+</sup> <sup>a</sup>		% of total CD8 <sup>+</sup> <sup>a</sup>	
	None	Ty21a	None	Ty21a
C5aR (n = 8 <sup>b</sup> )	16.6 $\pm$ 2.6	34.6 $\pm$ 5.5	3.3 $\pm$ 0.4	8.1 $\pm$ 1.3
CXCR2 (n = 8 <sup>b</sup> )	10.1 $\pm$ 2.4	3.6 $\pm$ 1.1*	3.9 $\pm$ 1.3	2.7 $\pm$ 0.4
CCR1 (n = 8 <sup>b</sup> )	9.9 $\pm$ 0.1	2.4 $\pm$ 0.8**	6.5 $\pm$ 1.1	1.9 $\pm$ 0.1***

<sup>a</sup>mean  $\pm$  SEM

<sup>b</sup>without immunostimulant these chemokine receptors were below the level of detection in 4–5 mice

Significant differences between IVES treatment with Ty21a and no IVES treatment following an unpaired t-test are shown by \*P < 0.05, \*\*P < 0.01, and \*\*\*P < 0.001.



**Figure 5.** Ives Ty21a immunostimulation after immunization significantly improved bladder tumor regression and mouse survival. Eight groups of 8–10 tumor-bearing mice were either left untreated (black triangles) or received Ives Ty21a (black asterisk, by 3 instillations in **A** or 1 instillation in **B**), or s.c. E7 vaccine alone (white diamonds) or followed by Ty21a (black squares, 3 doses in **A** and 1 dose in **B**). Mouse survival curves are shown for each treatment (**A** and **B**). Significant differences in mouse survival between each treatment and the control are indicated by \* $P < 0.017$ , \*\* $P < 0.003$ , and \*\*\* $P < 0.0003$  following adjusted log-rank test. Data from both tumor protection assays were compiled and survival at day 110 is shown in (**C**). Significant differences between groups are indicated by \* $P < 0.05$ , \*\*\* $P < 0.001$ , and \*\*\*\* $P < 0.0001$  following  $\chi^2$  test.

previously described.<sup>45</sup> Briefly, splenocytes were obtained by mechanical dissociation, whereas the bladders were minced and digested stepwise with 0.5 mg/mL thermolysin (Roche) and 1 mg/mL collagenase/dispase (Roche).<sup>3</sup> Bone marrow-derived dendritic cells (BMDCs) were isolated using bone marrow cells collected from tibias and femurs of female C57BL/6 mice and cultured in the presence of 150 U/mL recombinant granulocyte-macrophage-colony stimulating-factor (R and D Systems).<sup>2</sup>

#### IFN- $\gamma$ ELISPOT assay

IFN- $\gamma$  ELISPOT assays were performed as described<sup>45</sup> using Multi-screen-HA 96-well plates (MAHA S4510, Millipore) anti-IFN- $\gamma$  monoclonal antibody (R4-6A2, Beckton Dickinson PharMingen), biotinylated anti-IFN- $\gamma$  monoclonal antibody (XMG1.2, Beckton Dickinson PharMingen), and Streptavidin-AP (Roche). In brief,  $3 \times 10^4$  BMDCs/well, used as antigen-presenting cells, were incubated for 1 h in duplicate with 1  $\mu$ g/mL of H-2D<sup>b</sup> restricted E7<sub>49–57</sub> peptide or medium alone (control wells) before addition of  $1 \times 10^5$  bladder cells and incubation for 16–24 h. E7-specific responses were defined as the number of

#### Preparation of murine cells

Mice were sacrificed by CO<sub>2</sub> inhalation and the spleen and bladder were harvested. Single-cell suspensions were obtained as

IFN- $\gamma$  spots/ $10^5$  cells in the E7-stimulated wells minus the number of IFN- $\gamma$  spots/ $10^5$  cells in the control wells (<3 spots/well).



### Tetramer and T-cell labeling

T-cell staining was performed as previously described<sup>2</sup> using phycoerythrin (PE)-conjugated E7<sub>49–57</sub> and L1<sub>165–173</sub> (as a control) H-2D<sup>b</sup>-restricted tetramers (TetE7 and TetL1, respectively, from TC-Metrix), allophycocyanine (APC)-labeled CD8 $\alpha$  (clone 53–6.7) and fluorescein isothiocyanate (FITC)-labeled CD4 (clone RM4-5) (both from eBioscience). TetE7<sup>+</sup>CD8<sup>+</sup> T cell percentages among total cells were calculated after subtraction of the background measured with control TetL1 (<5 events/bladder). Staining for chemokine receptors and ESL was performed using a 10-color flow cytometry protocol as previously described.<sup>9</sup> The monoclonal anti-mouse antibodies used were: PE/TXRD-anti-CD45/LCA (I3/2.3), PerCPCy5.5-anti-CD3 (17A2), AlexaFluor700-anti-CD4 (GK1.5), AlexaFluor488-anti-CCR5 (HM-CCR5), PE-Cy7-anti-CXCR3 (CXCR3-173), PE-Cy7-anti-C5aR (20/70) (Biolegend); APC-, PE/TXRD- or PE-Cy7-anti-CD8a (53–6.7, eBioscience); APC-anti-CXCR2 (242216), R and D Systems); PerCPCy5.5-anti CCR1 (C-20, Santa Cruz Biotechnology). For ESL staining, cells were incubated with 2  $\mu$ g of E-selectin/human IgG-Fc chimera (R and D Systems) and detected with an AlexaFluor647-anti-human IgG Fc $\gamma$ -specific antibody (Jackson ImmunoResearch). Dead cells were excluded by a Live/Dead Fixable Aqua Dead Cell staining kit (Invitrogen, Life Technologies).

Cell acquisition and analysis were performed using FACS Calibur (BD Biosciences) or Gallios Flow Cytometer (Beckman Coulter) and CellQuest Pro software Version 4.0.1 (BD Biosciences) or FlowJo software (Tree Star), respectively.

### Orthotopic bladder tumor model

TC-1 cells are primary mouse lung epithelial cells that were transduced with retroviral vectors expressing the oncogenes HaRas and HPV16 E6 and E7.<sup>46</sup> TC-1 cells expressing luciferase were then generated by lentiviral infection.<sup>47</sup> Bladder tumors were established as previously described.<sup>3</sup> Briefly, deeply anesthetized mice were instilled with  $2.5 \times 10^5$  TC-1-luc cells by urethral catheterization. Tumor growth was monitored by bioluminescence 15 minutes after intraperitoneal injection of D-luciferin (Promega; 150  $\mu$ g/g of body weight) in the Xenogen imaging system (Xenogen/IVIS Caliper Life Science, kindly provided by the cellular imaging facility, CIF/UNIL, Lausanne, Switzerland).

### References

- Gajewski TF, Woo SR, Zha Y, Spaepen R, Zheng Y, Corrales L, Spranger S. Cancer immunotherapy strategies based on overcoming barriers within the tumor microenvironment. *Curr Opin Immunol* 2013; 25:268–76; PMID:23579075; <http://dx.doi.org/10.1016/j.coi.2013.02.009>
- Decrausaz L, Domingos-Pereira S, Duc M, Bobst M, Romero P, Schiller JT, Jichlinski P, Nardelli-Haeffliger D. Parenteral but not mucosal immunization is able to induce regression of human papillomavirus associated genital tumors. *Int J Cancer* 2011; 129:762–72; PMID:21384340; <http://dx.doi.org/10.1002/ijc.25973>
- Domingos-Pereira S, Derré L, Warpelin-Decrausaz L, Haeffliger JA, Romero P, Jichlinski P, Nardelli-Haeffliger D. Intravaginal and subcutaneous immunization induced vaccine-specific CD8 T-cells and tumor-regression in the bladder. *J Urol* 2014; 191: 814–22.
- Nardelli-Haeffliger D, Dudda JC, Romero P. Vaccination route matters for mucosal tumors. *Sci Transl Med* 2013; 5:172fs4; PMID:23408051; <http://dx.doi.org/10.1126/scitranslmed.3005638>
- Sandoval F, Terme M, Nizard M, Badoual C, Bureau MF, Freyburger L, Clement O, Marcheteau E, Gey A, Fraise G, et al. Mucosal Imprinting of Vaccine-Induced CD8+ T Cells Is Crucial to Inhibit the Growth of Mucosal Tumors. *Sci Transl Med* 2013; 5:172ra20; PMID:23408053; <http://dx.doi.org/10.1126/scitranslmed.3004888>
- Shin H, Iwasaki A. A vaccine strategy that protects against genital herpes by establishing local memory T cells. *Nature* 2012; 491:463–7; PMID:23075848; <http://dx.doi.org/10.1038/nature11522>
- Matsushima H, Yamada N, Matsue H, Shimada S. TLR3-, TLR7-, and TLR9-mediated production of proinflammatory cytokines and chemokines from murine connective tissue type skin-derived mast cells but not from bone marrow-derived mast cells. *J Immunol* 2004; 173:531–41; PMID:15210814; <http://dx.doi.org/10.4049/jimmunol.173.1.531>
- Schaefer TM, Fahey JV, Wright JA, Wira CR. Innate immunity in the human female reproductive tract: antiviral response of uterine epithelial cells to the TLR3 agonist poly(I:C). *J Immunol* 2005; 174:992–1002; PMID:15634923; <http://dx.doi.org/10.4049/jimmunol.174.2.992>
- Domingos-Pereira S, Decrausaz L, Derre L, Bobst M, Romero P, Schiller JT, Jichlinski P, Nardelli-Haeffliger D. Intravaginal TLR agonists increase local vaccine-specific CD8 T cells and human papillomavirus-associated

### Chemokine array

Bladders were recovered 24 h after IVES immunostimulation with PBS, CpG, or Ty21a alone, or 5 d after E7 vaccination for Ty21a, and homogenized in 500  $\mu$ L PBS with protease inhibitors (10  $\mu$ g/mL aprotinin from bovine lung, 10  $\mu$ g/mL leupeptin hemisulfate salt, and 10  $\mu$ g/mL pepstatin A; all from Sigma-Aldrich). TritonX-100 (final concentration 1%, Sigma-Aldrich) was added after homogenization, and after 2 freeze-thaw cycles the samples were centrifuged at 10,000 g for 5 min to remove debris. Protein concentration was assessed using the BCA protein assay (Thermo Scientific). Chemokines were detected using the Proteome Profiler Array: Mouse Chemokine Array kit (R and D Systems), according to the manufacturer's instructions. Briefly, 150  $\mu$ g of protein (pooled from 3 bladders, 50  $\mu$ g each) was used for the assay. Detection of chemokine levels was performed using ImageJ software (NIH) and expressed as mean pixel density. Significant detection was determined as greater than the mean + 3 SD of pixel density of negative spots. Differences in the increased chemokine levels between the different conditions were considered significant when greater than or equal to the 99% confidence interval of the mean fold increases examined.

### Statistical analysis

Statistical analyses were performed using Prism 5.00 for Windows (GraphPad software). Single comparisons were performed by the Mann-Whitney test or by Student t test after log<sub>10</sub> normalization. Multiple comparisons were performed using one-way ANOVA and the Tukey Multiple Comparison Test. Other statistical tests are indicated in the text or figure legends.

### Disclosure of Potential Conflicts of Interest

Denise Nardelli Haeffliger is an inventor on patent PCT/IB2009/051372: "Method and Vaccine for optimizing the specific immune responses". The remaining authors declared no conflict of interest.

### Funding

This work was supported by the Swiss Cancer League (KFS 2808-08-2011) and the Swiss National Science Foundation (#31003A-135109 and 320030-153201, as well as 310030-130812 to PR).

- genital-tumor regression in mice. *Mucosal Immunol* 2013; 6:393-404; PMID:22968420; <http://dx.doi.org/10.1038/mi.2012.83>
10. Decrausaz L, Pythoud C, Domingos-Pereira S, Derré L, Jichlinski P, Nardelli-Haeffiger D. Intravaginal live attenuated *Salmonella* increase local anti-tumor vaccine-specific CD8 T cells. *Oncoimmunology* 2013; 2: e22944; PMID:23483225
  11. Kirkali Z, Chan T, Manoharan M, Algaba F, Busch C, Cheng L, Kiemeny L, Kriegmair M, Montironi R, Murphy WM, et al. Bladder cancer: epidemiology, staging and grading, and diagnosis. *Urology* 2005; 66:4-34; PMID:16399414; <http://dx.doi.org/10.1016/j.urol.2005.07.062>
  12. Ellen A, Schenk-Braat M, Bangma CH. Immunotherapy for superficial bladder cancer. *Cancer Immunol Immunother* 2005; 54:414-23; PMID:15565330; <http://dx.doi.org/10.1007/s00262-004-0621-x>
  13. Herr HW, Morales A. History of bacillus Calmette-Guerin and bladder cancer: an immunotherapy success story. *J Urol* 2008; 179:53-6; PMID:17997439; <http://dx.doi.org/10.1016/j.juro.2007.08.122>
  14. Chevalier MF, Nardelli-Haeffiger D, Domingos-Pereira S, Jichlinski P, Derre L. Immunotherapeutic strategies for bladder cancer. *Hum Vaccin Immunother* 2014; 10:977-81; PMID:24384699
  15. Decrausaz L, Revaz V, Bobst M, Corthésy B, Romero P, Nardelli-Haeffiger D. Induction of human papillomavirus oncogene-specific CD8 T-cell effector responses in the genital mucosa of vaccinated mice. *Int J Cancer* 2010; 126:2469-78; PMID:19816937
  16. Seow SW, Rahmat JN, Bay BH, Lee YK, Mahendran R. Expression of chemokine/cytokine genes and immune cell recruitment following the instillation of *Mycobacterium bovis*, bacillus Calmette-Guerin or *Lactobacillus rhamnosus* strain GG in the healthy murine bladder. *Immunology* 2008; 124:419-27; PMID:18217952; <http://dx.doi.org/10.1111/j.1365-2567.2007.02792.x>
  17. Saban MR, Hellmich H, Nguyen NB, Winston J, Hammond TG, Saban R. Time course of LPS-induced gene expression in a mouse model of genitourinary inflammation. *Physiol Genomics* 2001; 5:147-60; PMID:11285368
  18. Tengvall S, Lundqvist A, Eisenberg RJ, Cohen GH, Harandi AM. Mucosal administration of CpG oligodeoxynucleotide elicits strong CC and CXC chemokine responses in the vagina and serves as a potent Th1-tilting adjuvant for recombinant gD2 protein vaccination against genital herpes. *J Virol* 2006; 80:5283-91; PMID:16699008; <http://dx.doi.org/10.1128/JVI.02013-05>
  19. Lindqvist M, Nookaew I, Brinkenbergh I, Samuelson E, Thorn K, Nielsen J, Harandi AM. Unraveling molecular signatures of immunostimulatory adjuvants in the female genital tract through systems biology. *PLoS One* 2011; 6:e20448; PMID:21666746; <http://dx.doi.org/10.1371/journal.pone.0020448>
  20. Rose CE, Jr., Lannigan JA, Kim P, Lee JJ, Fu SM, Sung SS. Murine lung eosinophil activation and chemokine production in allergic airway inflammation. *Cell Mol Immunol* 2010; 7:361-74; <http://dx.doi.org/10.1038/cmi.2010.31>
  21. Mangsbo SM, Nanalca C, Essand M, Loskog A, Totterman TH. CpG therapy is superior to BCG in an orthotopic bladder cancer model and generates CD4+ T-cell immunity. *J Immunother* 2008; 31:34-42; PMID:18157010; <http://dx.doi.org/10.1097/CJI.0b013e3181587d29>
  22. Guo RF, Ward PA. Role of C5a in inflammatory responses. *Annu Rev Immunol* 2005; 23:821-52; PMID:15771587; <http://dx.doi.org/10.1146/annurev.immunol.23.021704.115835>
  23. Kobayashi Y. The role of chemokines in neutrophil biology. *Front Biosci* 2008; 13:2400-7; PMID:17981721; <http://dx.doi.org/10.2741/2853>
  24. Ohtsuka Y, Lee J, Stamm DS, Sanderson IR. MIP-2 secreted by epithelial cells increases neutrophil and lymphocyte recruitment in the mouse intestine. *Gut* 2001; 49:526-33; PMID:11559650; <http://dx.doi.org/10.1136/gut.49.4.526>
  25. Nataf S, Davoust N, Ames RS, Barnum SR. Human T cells express the C5a receptor and are chemoattracted to C5a. *J Immunol* 1999; 162:4018-23; PMID:10201923
  26. Liu YJ, Guo DW, Tian L, Shang DS, Zhao WD, Li B, Fang WG, Zhu L, Chen YH. Peripheral T cells derived from Alzheimer's disease patients overexpress CXCR2 contributing to its transendothelial migration, which is microglial TNF-alpha-dependent. *Neurobiol Aging* 2010; 31:175-88; PMID:18462836; <http://dx.doi.org/10.1016/j.neurobiolaging.2008.03.024>
  27. Gong X, Gong W, Kuhns DB, Ben-Baruch A, Howard OM, Wang JM. Monocyte chemoattractant protein-2 (MCP-2) uses CCR1 and CCR2B as its functional receptors. *J Biol Chem* 1997; 272:11682-5; PMID:9115216; <http://dx.doi.org/10.1074/jbc.272.18.11682>
  28. Luster AD. Chemokines-chemotactic cytokines that mediate inflammation. *N Engl J Med* 1998; 338:436-45; PMID:9459648; <http://dx.doi.org/10.1056/NEJM199802123380706>
  29. Ruffing N, Sullivan N, Sharmeen L, Sodroski J, Wu L. CCR5 has an expanded ligand-binding repertoire and is the primary receptor used by MCP-2 on activated T cells. *Cell Immunol* 1998; 189:160-8; PMID:9790730; <http://dx.doi.org/10.1006/cimm.1998.1379>
  30. McCarthy EF. The toxins of William B. Coley and the treatment of bone and soft-tissue sarcomas. *Iowa Orthop J* 2006; 26:154-8; PMID:16789469
  31. Li Q, Cherayil BJ. Role of Toll-like receptor 4 in macrophage activation and tolerance during *Salmonella enterica* serovar Typhimurium infection. *Infect Immun* 2003; 71:4873-82; PMID:12933828; <http://dx.doi.org/10.1128/IAI.71.9.4873-4882.2003>
  32. Mendez-Samperio P, Belmont L, Miranda E. *Mycobacterium bovis* BCG Toll-like receptors 2 and 4 cooperation increases the innate epithelial immune response. *Arch Med Res* 2008; 39:33-9; PMID:18067993; <http://dx.doi.org/10.1016/j.arcmed.2007.06.019>
  33. von Meyenn F, Schaefer M, Weighardt H, Bauer S, Kirschning CJ, Wagner H, Sparwasser T. Toll-like receptor 9 contributes to recognition of *Mycobacterium bovis* Bacillus Calmette-Guerin by Flt3-ligand generated dendritic cells. *Immunobiology* 2006; 211:557-65; PMID:16920494; <http://dx.doi.org/10.1016/j.imbio.2006.05.004>
  34. Magnusson M, Tobes R, Sancho J, Pareja E. Cutting edge: natural DNA repetitive extragenic sequences from gram-negative pathogens strongly stimulate TLR9. *J Immunol* 2007; 179:31-5; PMID:17579017; <http://dx.doi.org/10.4049/jimmunol.179.1.31>
  35. Gewirtz AT, Navas TA, Lyons S, Godowski PJ, Madara JL. Cutting edge: bacterial flagellin activates basolaterally expressed TLR5 to induce epithelial proinflammatory gene expression. *J Immunol* 2001; 167:1882-5; PMID:11489966; <http://dx.doi.org/10.4049/jimmunol.167.4.1882>
  36. Honko AN, Mizel SB. Mucosal administration of flagellin induces innate immunity in the mouse lung. *Infect Immun* 2004; 72:6676-9; PMID:15501801; <http://dx.doi.org/10.1128/IAI.72.11.6676-6679.2004>
  37. Hapfelmeier S, Stecher B, Barthel M, Kremer M, Muller AJ, Heikenwalder M, Stallmach T, Hensel M, Pfeffer K, Akira S, et al. The *Salmonella* pathogenicity island (SPI)-2 and SPI-1 type III secretion systems allow *Salmonella* serovar typhimurium to trigger colitis via MyD88-dependent and MyD88-independent mechanisms. *J Immunol* 2005; 174:1675-85; PMID:15661931; <http://dx.doi.org/10.4049/jimmunol.174.3.1675>
  38. Salamone GV, Petracca Y, Fuxman Bass JL, Rumbo M, Nahmod KA, Gabelloni ML, Vermeulen ME, Matteo MJ, Geffner JR, Trevani AS. Flagellin delays spontaneous human neutrophil apoptosis. *Lab Invest* 2010; 90:1049-59; PMID:20368700; <http://dx.doi.org/10.1038/labinvest.2010.77>
  39. Barocas DA, Globe DR, Colayco DC, Onyenwenyi A, Bruno AS, Bramley TJ, Spear RJ. Surveillance and treatment of non-muscle-invasive bladder cancer in the USA. *Adv Urol* 2012; 2012:421709; PMID:22645607; <http://dx.doi.org/10.1155/2012/421709>
  40. Begier EM, Burwen DR, Haber P, Ball R. Vaccine Adverse Event Reporting System Working G. Postmarketing safety surveillance for typhoid fever vaccines from the Vaccine Adverse Event Reporting System, July 1990 through June 2002. *Clin Infect Dis* 2004; 38:771-9; PMID:14999618; <http://dx.doi.org/10.1086/381548>
  41. Aranda F, Vacchelli E, Obrist F, Eggermont A, Galon J, Sautes-Fridman C, Cremer I, Henrik Ter Meulen J, Zitvogel L, Kroemer G, et al. Trial Watch: Toll-like receptor agonists in oncological indications. *Oncoimmunology* 2014; 3:e29179; PMID:25083332; <http://dx.doi.org/10.4161/onci.29179>
  42. Decrausaz L, Revaz V, Bobst M, Corthésy B, Romero P, Nardelli-Haeffiger D. Induction of Human Papillomavirus oncogene-specific CD8 T cell effector responses in the genital mucosa of vaccinated mice. *Int J Cancer* 2010; 126:2469-78; PMID:19816937
  43. Germanier R, Fürer E. Isolation and characterization of *gale* mutant Ty 21a of *Salmonella typhi*. A candidate strain for a live, oral typhoid vaccine. *J Infect Dis* 1975; 131:553-8; PMID:1092768; <http://dx.doi.org/10.1093/infdis/131.5.553>
  44. Fraillery D, Baud D, Pang SY, Schiller J, Bobst M, Zosso N, Ponci F, Nardelli-Haeffiger D. Ty21a expressing Human papillomavirus type 16 L1 as a potential live *Salmonella* vaccine against cervical cancer and typhoid fever. *Clin Vaccine Immunol* 2007; 14:1285-95; PMID:17687110; <http://dx.doi.org/10.1128/CVI.00164-07>
  45. Revaz V, Debonneville A, Bobst M, Nardelli-Haeffiger D. Monitoring of vaccine-specific gamma interferon induction in genital mucosa of mice by real-time reverse-transcription-PCR. *Clin Vacc Immunol* 2008; 5:757-64; PMID:18367582; <http://dx.doi.org/10.1128/CVI.00392-07>
  46. Lin KY, Guarneri FG, Staveleyocorroll KF, Levitsky HI, August JT, Pardoll DM, Wu TC. Treatment of established tumors with a novel vaccine that enhances major histocompatibility class II presentation of tumor antigen. *Cancer Res* 1996; 56:21-6; PMID:8548765
  47. Decrausaz L, Goncalves A-R, Domingos-Pereira S, Pythoud C, Stehle JC, Schiller J, Jichlinski P, Nardelli-Haeffiger D. A novel mucosal orthotopic murine model of Human papillomavirus-associated genital cancer. *Int J Cancer* 2011; 128:2105-13; PMID:20635385; <http://dx.doi.org/10.1002/ijc.25561>