

## SHORT GENOME REPORT

## Open Access



# Genome sequence of *Bradyrhizobium* sp. WSM1253; a microsymbiont of *Ornithopus compressus* from the Greek Island of Sifnos

Ravi Tiwari<sup>1</sup>, John Howieson<sup>1</sup>, Ron Yates<sup>1,2</sup>, Rui Tian<sup>1</sup>, Brittany Held<sup>3</sup>, Roxanne Tapia<sup>3</sup>, Cliff Han<sup>3</sup>, Rekha Seshadri<sup>4</sup>, T. B. K. Reddy<sup>4</sup>, Marcel Huntemann<sup>4</sup>, Amrita Pati<sup>4</sup>, Tanja Woyke<sup>4</sup>, Victor Markowitz<sup>5</sup>, Natalia Ivanova<sup>4</sup>, Nikos Kyrpides<sup>4,6</sup> and Wayne Reeve<sup>1\*</sup>

## Abstract

*Bradyrhizobium* sp. WSM1253 is a novel N<sub>2</sub>-fixing bacterium isolated from a root nodule of the herbaceous annual legume *Ornithopus compressus* that was growing on the Greek Island of Sifnos. WSM1253 emerged as a strain of interest in an Australian program that was selecting inoculant quality bradyrhizobial strains for inoculation of Mediterranean species of lupins (*Lupinus angustifolius*, *L. princei*, *L. atlanticus*, *L. pilosus*). In this report we describe, for the first time, the genome sequence information and annotation of this legume microsymbiont. The 8,719,808 bp genome has a G + C content of 63.09 % with 71 contigs arranged into two scaffolds. The assembled genome contains 8,432 protein-coding genes, 66 RNA genes and a single rRNA operon. This improved-high-quality draft rhizobial genome is one of 20 sequenced through a DOE Joint Genome Institute 2010 Community Sequencing Project.

**Keywords:** root-nodule bacteria, nitrogen fixation, rhizobia, *Ornithopus*

## Introduction

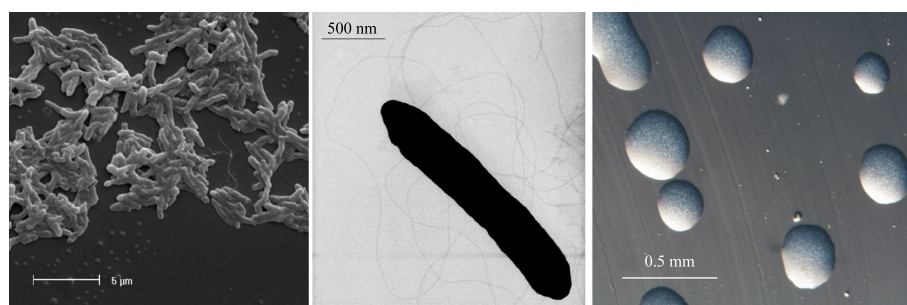
Root nodule bacteria are soil microorganisms that can establish a symbiotic relationship with hosts from the legume plant family *Leguminosae*. In this intimate relationship the bacteria fix atmospheric nitrogen into ammonia for the legume, in exchange for nutrients. With the continued discovery of a large number of organisms with this capability through the last century, the slow growing, non-acid producing root nodule bacteria were separated from the fast growing acid-producing forms and designated the bradyrhizobia [1]. The initial interest in the bradyrhizobia arose from the ability of strains to nodulate agriculturally important crops such as soybean and groundnut. Today the bradyrhizobia are known to nodulate a wide variety of legumes such as *Arachis hypogaea*, *Adenocarpus* spp., *Beta vulgaris*, *Chamaecytisus* spp., *Cytisus villosus*, *Entada koshunensis*, *Glycine* spp., *Dolichos lablab*, *Lespedeza* spp., *Lupinus* spp., *Ornithopus* spp., *Pachyrhizus erosus*, *Spartocytisus* spp. and *Teline* spp. [2–9].

Two agriculturally important legume genera form a symbiosis with *Bradyrhizobium* [10], the subject of this manuscript. *Lupinus* which is a large and diverse genus, and *Ornithopus*, which is a smaller forage legume genus, both nodulate and fix nitrogen with this bacterium. *Lupinus angustifolius* is commonly known as lupin in Europe and Australia, and lupine in North America, and its grain is widely used as an animal or human food. Lupins are either annual or perennial herbs, shrubs or trees [11]. *Ornithopus* is commonly known as serradella, and was originally confined to the Iberian peninsula and the Mediterranean basin, however it has become a valuable grazing plant adapted to low rainfall, acidic and infertile soils world-wide [12]. Hence, appropriate *Bradyrhizobium* inoculants are of particular value for the establishment of effective nitrogen-fixing symbioses with these legume genera.

In Australia, the challenge was to select inoculant strains that were optimal for N fixation in symbiosis with *Lupinus angustifolius* and several species of *Ornithopus*. These are all very important legumes in farming systems of Western Australia. They are cultivated on the same acid

\* Correspondence: [W.Reeve@murdoch.edu.au](mailto:W.Reeve@murdoch.edu.au)

<sup>1</sup>Centre for Rhizobium Studies, Murdoch University, Murdoch, Australia  
Full list of author information is available at the end of the article



**Fig. 1** Images of *Bradyrhizobium* sp. WSM1253 using scanning (Left) and transmission (Center) electron microscopy as well as light microscopy to visualize colony morphology on solid media (Right)

**Table 1** Classification and general features of *Bradyrhizobium* sp. WSM1253 [44, 45]

MIGS ID	Property	Term	Evidence code <sup>a</sup>
	Classification	Domain <i>Bacteria</i>	TAS [45]
		Phylum <i>Proteobacteria</i>	TAS [46]
		Class <i>Alphaproteobacteria</i>	TAS [47, 48]
		Order <i>Rhizobiales</i>	TAS [49]
		Family <i>Bradyrhizobiaceae</i>	TAS [50, 51]
		Genus <i>Bradyrhizobium</i>	TAS [1]
		Species sp.	IDA
		Strain: WSM1253	TAS [14]
	Gram stain	Negative	IDA
	Cell shape	Rod	IDA
	Motility	Motile	IDA
	Sporulation	Non-sporulating	NAS
	Temperature range	Mesophile	NAS
	Optimum temperature	28 °C	NAS
	pH range; Optimum	5-9; 7	NAS
	Carbon source	Varied	IDA
MIGS-6	Habitat	Soil, root nodule, on plant host	TAS [14]
MIGS-6.3	Salinity	Non-halophilie	NAS
MIGS-22	Oxygen requirement	Aerobic	TAS [14]
MIGS-15	Biotic relationship	free-living, symbiont	TAS [14]
MIGS-14	Pathogenicity	Non-pathogenic	NAS
MIGS-4	Geographic location	Greek Island of Sifnos	TAS [14]
MIGS-5	Nodule collection date	1991	IDA
MIGS-4.1	Latitude	39.975	IDA
MIGS-4.2	Longitude	24.743889	IDA
MIGS-4.4	Altitude	Not reported	IDA

<sup>a</sup>Evidence codes – IDA: Inferred from Direct Assay; TAS: Traceable Author Statement (i.e., a direct report exists in the literature); NAS: Non-traceable Author Statement (i.e., not directly observed for the living, isolated sample, but based on a generally accepted property for the species, or anecdotal evidence). These evidence codes are from the Gene Ontology project [52]

and sandy soils, and share microsymbionts [13]. Thus, it was important that any inoculant strain released for an individual legume species did not compromise the potential nitrogen fixation from the other legumes. *Bradyrhizobium* sp. WSM1253 emerged as a strain of interest in an Australian program that was selecting inoculant strains for Mediterranean species of lupins. Strain WSM1253 was isolated from a nodule of the herbaceous annual legume *Ornithopus compressus* in 1991 collected 2.5 km near of Kastro, towards Faros, on the Greek Island of Sifnos. This strain was found to be capable of high levels of nitrogen fixation across many species in the cross-nodulation complex of lupins and *Ornithopus*, being particularly effective on *L. princei* [14]. Here we present a preliminary description of the general features of the *Ornithopus compressus* microsymbiont *Bradyrhizobium* sp. WSM1253,

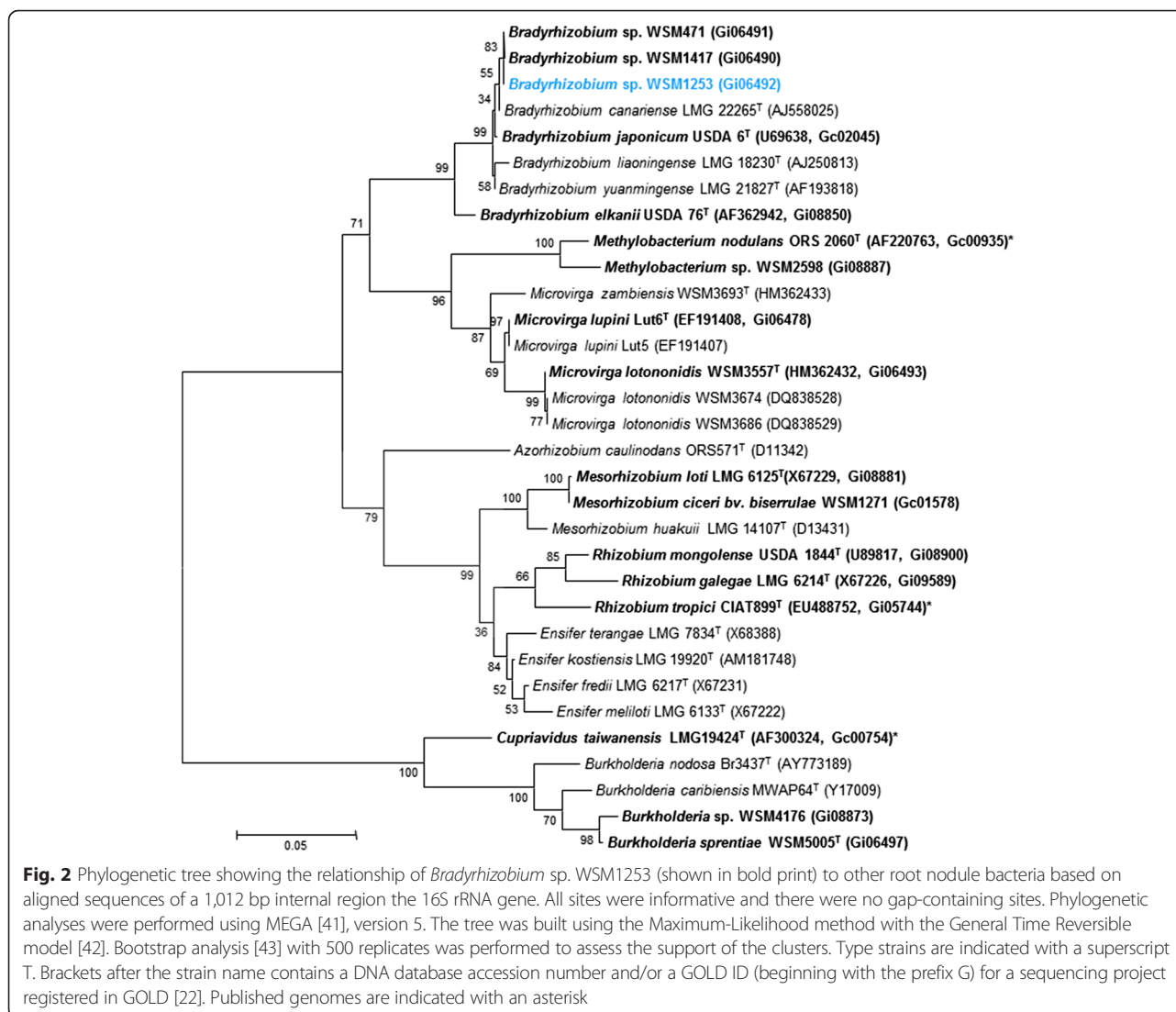
together with the description of the complete genome sequence and its annotation.

## Organism information

### Classification and features

*Bradyrhizobium* sp. WSM1253 is a motile, non-sporulating, non-encapsulated, Gram-negative rod in the order *Rhizobiales* of the class *Alphaproteobacteria*. The rod shaped form varies in size and dimensions of approximately 0.25  $\mu\text{m}$  in width and 1.5-2.0  $\mu\text{m}$  in length (Fig. 1 Left and Center). It is relatively slow growing, forming colonies after 6–7 days when grown on  $\frac{1}{2}$ LA [15], TY [16] or YMA [17] at 28 °C. Colonies on  $\frac{1}{2}$ LA are opaque, slightly domed and moderately mucoid with smooth margins (Fig. 1 Right).

Minimum Information about the Genome Sequence (MIGS) is provided in Table 1 and Additional file 1:



**Table 2** Compatibility of *Bradyrhizobium* sp. WSM1253 [14] with different wild and cultivated legume species

Species name	Family	Common name	Habit/Growth type	Nod	Fix
<i>Lupinus atlanticus</i>	Fabaceae	Atlas Lupin/Moroccan Lupin	Annual herbaceous	+	+
<i>Lupinus pilosus</i>	Fabaceae	Mountain blue lupin	Annual herbaceous	+	+
<i>Lupinus princei</i>	Fabaceae	Lupin	Annual herbaceous	+	+
<i>Ornithopus pinnatus</i>	Fabaceae	Sand Bird's-foot	Annual herbaceous	+	+
<i>Ornithopus sativus</i> Brot.	Fabaceae	common bird's-foot	Annual herbaceous	+	+
<i>Ornithopus compressus</i>	Fabaceae	Yellow serradella	Annual herbaceous	+	+

+, nodulation/fixation observed

Table S1. Strain WSM1253 shares 100 % (1369/1369 bp), 99.85 % (1367/1369 bp) and 99.48 % (1362/1369 bp) 16S rRNA sequence identity with *Bradyrhizobium* sp. WSM1417, *Bradyrhizobium* sp. BTA-1<sup>T</sup> and *Bradyrhizobium japonicum* USDA 6<sup>T</sup>, respectively as determined using NCBI BLAST analysis [18]. Figure 2 shows the phylogenetic neighbor-hood of *Bradyrhizobium* sp. WSM1253 in a 16S rRNA sequence based tree.

### Symbiotaxonomy

Few of the legumes of the Mediterranean basin introduced to agriculture elsewhere are nodulated by bacteria in the genus *Bradyrhizobium* [19]. Amongst the notable exceptions are *Lupinus* and *Ornithopus*, which are legume genera adapted specifically to conditions of acidity and infertility [20]. Further, these two quite different legumes share a common species of *Bradyrhizobium*, although their modes of infection and nodule structure differ substantially [21]. WSM1253 is unusual in being a highly effective microsymbiont for many species in the two legume genera discussed, including, *L. angustifolius*, *L. princei*, *L. atlanticus*, *L. pilosus*, *O. compressus*, *O. sativus* Brot. and *O. pinnatus* (Table 2). WSM1253 will therefore be a valuable strain to study the genetics of

nodulation and nitrogen fixation in legumes of vastly differing physiology.

### Genome sequencing information

#### Genome project history

This organism was selected for sequencing on the basis of its environmental and agricultural relevance to issues in global carbon cycling, alternative energy production, and biogeochemical importance, and is part of the Community Sequencing Program at the U.S. Department of Energy, Joint Genome Institute for projects of relevance to agency missions. The genome project is deposited in the Genomes OnLine Database [22] and the improved-high-quality draft genome sequence in IMG. Sequencing, finishing and annotation were performed by the JGI. A summary of the project information is shown in Table 3.

#### Growth conditions and genomic DNA preparation

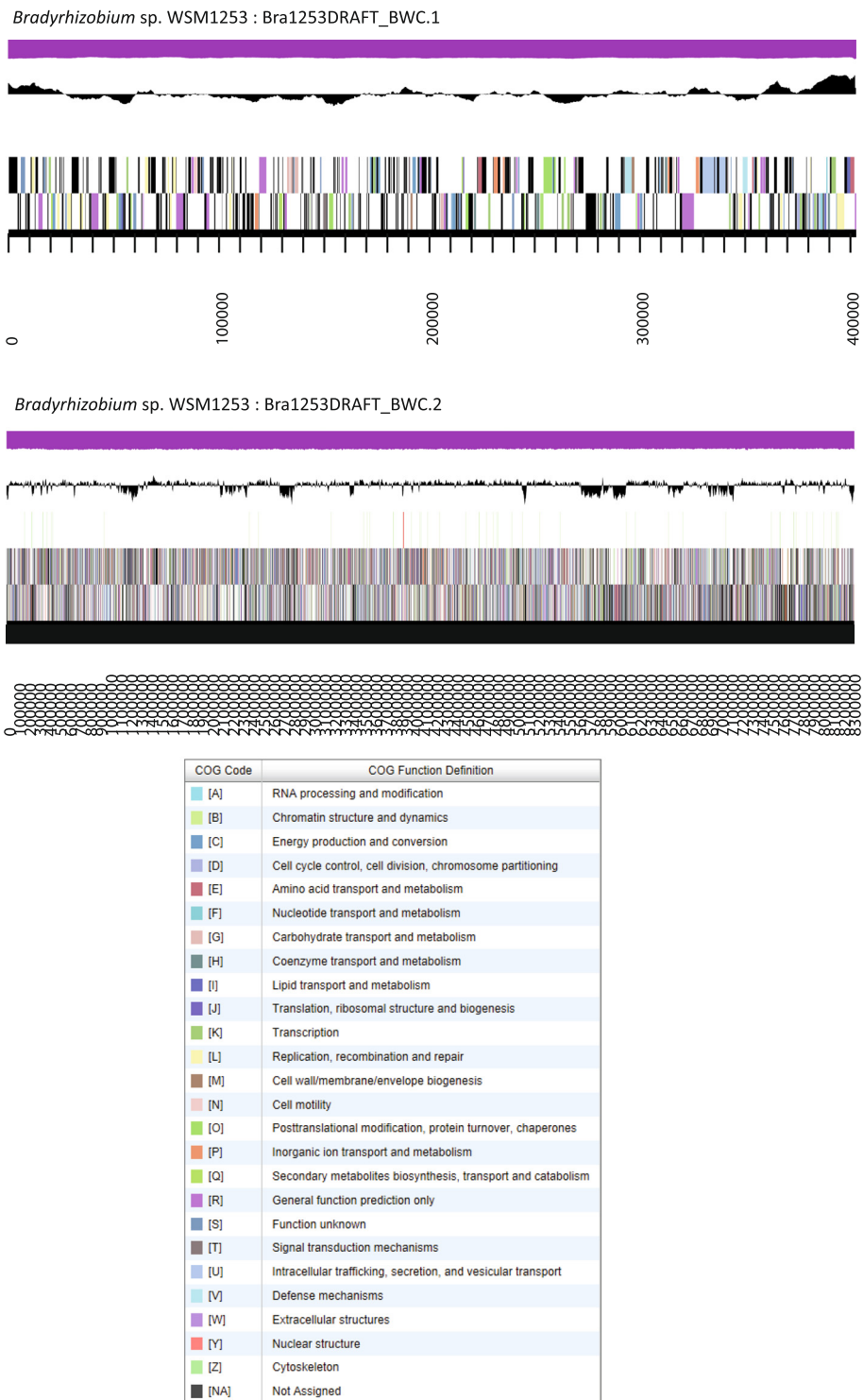
*Bradyrhizobium* sp. WSM1253 was grown on TY solid medium for 10 days, a single colony was selected and used to inoculate 5 ml TY broth medium. The culture was grown for 96 h on a gyratory shaker (200 rpm) at

**Table 3** Project information

MIGS ID	Property	Term
MIGS 31	Finishing quality	Improved-high-quality draft
MIGS 28	Libraries used	Illumina GAii and 454 FLX libraries
MIGS 29	Sequencing platforms	Illumina and 454
MIGS 31.2	Fold coverage	659.4 × Illumina; 8.4 × 454
MIGS 30	Assemblers	Velvet 1.0.13; Newbler 2.3
MIGS 32	Gene calling methods	Prodigal 1.4
	Locus Tag	Bra1253
	GenBank ID	AHMB01000000
	Genbank Date of Release	May 4, 2012
	GOLD ID	Gp0007394
	BIOPROJECT	PRJNA62341
MIGS 13	Project relevance	Symbiotic N2 fixation, agriculture
	Source Material Identifier	WSM1253

**Table 4** Genome statistics for *Bradyrhizobium* sp. WSM1253

Attribute	Value	% of Total
Genome size (bp)	8,719,808	100.00
DNA coding (bp)	7,446,464	85.40
DNA G + C (bp)	5,501,733	63.09
DNA scaffolds	2	100.00
Total genes	8,498	100.00
Protein coding genes	8,432	99.22
RNA genes	66	0.78
Pseudo genes	385	4.53
Genes in internal clusters	639	7.52
Genes with function prediction	5,682	66.89
Genes assigned to COGs	5,310	62.49
Genes with Pfam domains	6,484	76.30
Genes with signal peptides	948	11.16
Genes with transmembrane helices	1,953	22.98
CRISPR repeats	0	0.00



**Fig. 3** Graphical map of the two scaffolds from the genome of *Bradyrhizobium* sp. WSM1253. From bottom to the top of each scaffold: Genes on forward strand (color by COG categories), Genes on reverse strand (color by COG categories), RNA genes (tRNAs green, sRNAs red, other RNAs black), GC content, GC skew



28 °C [23]. Subsequently 1 ml was used to inoculate 60 ml TY broth medium and grown on a gyratory shaker (200 rpm) at 28 °C until OD 0.6 was reached. DNA was isolated from 60 ml of cells using a CTAB bacterial genomic DNA isolation method [24]. The quality of DNA was checked by 0.5 % agarose gel electrophoresis and its quantity by a NanoDrop ND-1000 Spectrophotometer (Nano Drop Technologies, Wilmington, USA). A DNA concentration of 500 ng/μl and OD 260/OD 280 of 1.90 was obtained.

### Genome sequencing and assembly

The draft genome of *Bradyrhizobium* sp. WSM1253 was generated at the DOE Joint Genome Institute using a combination of Illumina [25] and 454 technologies [26]. For this genome, we constructed and sequenced an Illumina GAii shotgun library which generated 77,541,190 reads totaling 5,893.1 Mbp, a 454 Titanium paired end library with an average insert size of 12 Kbp which generated 615,580 reads totaling 123.4 Mbp of 454 data. All general aspects of library construction and sequencing performed at the JGI [27]. The initial draft assembly contained 274 contigs in 2 scaffolds. The 454 Titanium standard data and the 454 paired end data were assembled

together with Newbler, version 2.3-PreRelease-6/30/2009. The Newbler consensus sequences were computationally shredded into 2 Kbp overlapping fake reads (shreds). Illumina sequencing data was assembled with VELVET, version 1.0.13 [28], and the consensus sequence was computationally shredded into 1.5 Kbp overlapping fake reads (shreds). We integrated the 454 Newbler consensus shreds, the Illumina VELVET consensus shreds and the read pairs in the 454 paired end library using parallel phrap, version SPS - 4.24 (High Performance Software, LLC). The software Consed [29–31] was used in the following finishing process. Illumina data was used to correct potential base errors and increase consensus quality using the software Polisher developed at JGI (Alla Lapidus, unpublished). Possible mis-assemblies were corrected using gapResolution (Cliff Han, unpublished), Dupfinisher [32], or sequencing cloned bridging PCR fragments with sub-cloning. Gaps between contigs were closed by editing in Consed, by PCR and by Bubble PCR (J-F Cheng, unpublished) primer walks. A total of 226 additional reactions were necessary to close gaps and to raise the quality of the finished sequence. The estimated genome size is 8.7 Mbp and the final assembly is based on 72.7 Mbp of 454 draft data which provides an average 8.4× coverage of the

**Table 5** Number of genes associated with general COG functional categories

Code	Value	% age	COG Category
J	235	3.83	Translation, ribosomal structure and biogenesis
A	0	0.00	RNA processing and modification
K	430	7.01	Transcription
L	1.53	2.50	Replication, recombination and repair
B	2	0.03	Chromatin structure and dynamics
D	39	0.64	Cell cycle control, cell division, chromosome partitioning
V	170	2.77	Defense mechanisms
T	270	4.40	Signal transduction mechanisms
M	322	5.25	Cell wall/membrane/envelope biogenesis
N	105	1.71	Cell motility
U	95	1.55	Intracellular trafficking, secretion, and vesicular transport
O	246	4.01	Posttranslational modification, protein turnover, chaperones
C	441	7.29	Energy production and conversion
G	418	6.82	Carbohydrate transport and metabolism
E	643	10.49	Amino acid transport and metabolism
F	94	1.53	Nucleotide transport and metabolism
H	322	5.25	Coenzyme transport and metabolism
I	387	6.31	Lipid transport and metabolism
P	361	5.89	Inorganic ion transport and metabolism
Q	261	4.26	Secondary metabolite biosynthesis, transport and catabolism
R	667	10.88	General function prediction only
S	360	5.87	Function unknown
-	3,188	37.51	Not in COGS

genome and 5,736.7 Mbp of Illumina draft data which provides an average 659.4× coverage of the genome.

### Genome annotation

Genes were identified using Prodigal [33], as part of the DOE-JGI genome annotation pipeline [34, 35] followed by a round of manual curation using GenePRIMP [36] for finished genomes and Draft genomes in fewer than 10 scaffolds. The predicted CDSs were translated and used to search the National Center for Biotechnology Information non-redundant database, UniProt, TIGR-Fam, Pfam, KEGG, COG, and InterPro databases. The tRNAScanSE tool [37] was used to find tRNA genes, whereas ribosomal RNA genes were found by searches against models of the ribosomal RNA genes built from SILVA [38]. Other non-coding RNAs such as the RNA components of the protein secretion complex and the RNase P were identified by searching the genome for the corresponding Rfam profiles using INFERNAL [39]. Additional gene prediction analysis and manual functional annotation was performed within the Integrated Microbial Genomes-Expert Review system [40] developed by the Joint Genome Institute, Walnut Creek, CA, USA.

### Genome properties

The genome is 8,719,808 nucleotides with 63.09 % GC content (Table 4) and comprised of 2 scaffolds (Fig. 3). From a total of 8,498 genes, 8,432 were protein encoding and 66 RNA only encoding genes. The majority of genes (66.86 %) were assigned a putative function whilst the remaining genes were annotated as hypothetical. The distribution of genes into COGs functional categories is presented in Table 5.

### Conclusions

*Bradyrhizobium* sp. WSM1253 was isolated from a nodule of the herbaceous annual legume *Ornithopus compressus* that was collected on the Greek Island of Sifnos. WSM1253 is rather unusual for a *Bradyrhizobium* strain in that it is highly efficient in nitrogen fixation for many species of *Lupinus* and *Ornithopus*, including *L. angustifolius*, *L. princei*, *L. atlanticus*, *L. pilosus*, *O. compressus*, *O. sativus* Brot. and *O. pinnatus*.

Phylogenetic analysis revealed that WSM1253 is most closely related to *Bradyrhizobium* sp. WSM1417. Strain WSM1417 was obtained from a *Lupinus* sp. nodule from Chile and differs from WSM1253 in that it cannot form an effective nitrogen-fixing symbiosis with *L. angustifolius*. The genomes of both of these strains have now been sequenced and this brings the total number of *Bradyrhizobium* genome depositions in IMG to 54; of these, strains which can symbiotically fix nitrogen have the nitrogenase-RXN MetaCyc pathway that is characterized by the multi-protein nitrogenase complex. However, strain WSM1253

is unique amongst these in that it can effectively fix nitrogen with many species of *Lupinus* (including *L. angustifolius*, *L. princei*, *L. atlanticus*, *L. pilosus*) and *Ornithopus compressus*. The genome attributes of *Bradyrhizobium* sp. WSM1253, in conjunction with other *Bradyrhizobium* genomes, will be important resources with which to build an understanding of interactions required for the successful establishment of effective symbioses with different species of *Lupinus* and *Ornithopus*.

### Additional file

**Additional file 1: Table S1.** Associated MIGS record. (DOC 73 kb)

### Abbreviations

½LA: half strength Lupin Agar; YMA: Yeast Mannitol Agar; TY: Tryptone Yeast extract Agar; GOLD: Genomes OnLine Database; CTAB: Cetyl trimethyl ammonium bromide.

### Competing interests

The authors declare that they have no competing interests.

### Authors' contributions

JH supplied the strain and background information for this project, RT supplied DNA to JGI and performed all imaging, RT and WR drafted the paper, all authors were either involved in sequencing the genome and/or editing the paper. All authors read and approved the final manuscript.

### Acknowledgements

This work was performed under the auspices of the US Department of Energy's Office of Science, Biological and Environmental Research Program, and by the University of California, Lawrence Berkeley National Laboratory under contract No. DE-AC02-05CH11231, Lawrence Livermore National Laboratory under Contract No. DE-AC52-07NA27344, and Los Alamos National Laboratory under contract No. DE-AC02-06NA25396. We gratefully acknowledge funding received from the Australian Government for an Australia India Senior Visiting Fellowship for Ravi Tiwari.

### Author details

<sup>1</sup>Centre for Rhizobium Studies, Murdoch University, Murdoch, Australia. <sup>2</sup>Department of Agriculture and Food, South Perth, Australia. <sup>3</sup>Los Alamos National Laboratory, Bioscience Division, Los Alamos, NM, USA. <sup>4</sup>DOE Joint Genome Institute, Walnut Creek, CA, USA. <sup>5</sup>Biological Data Management and Technology Center, Lawrence Berkeley National Laboratory, Berkeley, CA, USA. <sup>6</sup>Department of Biological Sciences, King Abdulaziz University, Jeddah, Saudi Arabia.

Received: 10 December 2014 Accepted: 25 November 2015

Published online: 30 November 2015

### References

- Jordan DC. Transfer of *Rhizobium-japonicum* Buchanan 1980 to *Bradyrhizobium* Gen-Nov, a genus of slow-growing, root nodule bacteria from leguminous plants. *Int J Syst Bacteriol.* 1982;32:136–9.
- Chahboune R, Carro L, Peix A, Barrijal S, Velazquez E, Bedmar EJ. *Bradyrhizobium cytisi* sp nov., isolated from effective nodules of *Cytisus villosus*. *Int J Syst Evol Micr.* 2011;61:2922–7.
- Chang YL, Wang JY, Wang ET, Liu HC, Sui XH, Chen WX. *Bradyrhizobium lablabi* sp nov., isolated from effective nodules of *Lablab purpureus* and *Arachis hypogaea*. *Int J Syst Evol Micr.* 2011;61:2496–502.
- Islam MS, Kawasaki H, Muramatsu Y, Nakagawa Y, Seki T. *Bradyrhizobium iriomotense* sp nov., isolated from a tumor-like root of the legume *Eintada koshunensis* from Iriomote Island in Japan. *Biosci Biotech Bioch.* 2008;72:1416–29.
- Kuykendall LD, Saxena B, Devine TE, Udell SE. Genetic diversity in *Bradyrhizobium-japonicum* Jordan 1982 and a proposal for *Bradyrhizobium-elkanii* Sp-Nov. *Can J Microbiol.* 1982;1992(38):501–5.

6. Ramirez-Bahena MH, Peix A, Rivas R, Camacho M, Rodriguez-Navarro DN, Mateos PF, et al. *Bradyrhizobium pachyrhizi* sp nov and *Bradyrhizobium jicamae* sp nov., isolated from effective nodules of *Pachyrhizus erosus*. *Int J Syst Evol Microb*. 2009;59:1929–34.
7. Rivas R, Willems A, Palomo JL, Garcia-Benavides P, Mateos PF, Martinez-Molina E, et al. *Bradyrhizobium betae* sp nov., isolated from roots of *Beta vulgaris* affected by tumour-like deformations. *Int J Syst Evol Microb*. 2004;54:1271–5.
8. Vinuesa P, Leon-Barrios M, Silva C, Willems A, Jarabo-Lorenzo A, Perez-Galdona R, et al. *Bradyrhizobium canariense* sp nov., an acid-tolerant endosymbiont that nodulates endemic genistoid legumes (*Papilionoideae*: *Genisteeae*) from the Canary Islands, along with *Bradyrhizobium japonicum* bv. *genistearum*, *Bradyrhizobium* genospecies alpha and *Bradyrhizobium* genospecies beta. *Int J Syst Evol Microb*. 2005;55:569–75.
9. Yao ZY, Kan FL, Wang ET, Wei GH, Chen WX. Characterization of rhizobia that nodulate legume species of the genus *Lespedeza* and description of *Bradyrhizobium yuanmingense* sp nov. *Int J Syst Evol Microb*. 2002;52:2219–30.
10. Stepkowski T, Zak M, Moulin L, Króliczak J, Golińska B, Narożna D, et al. *Bradyrhizobium canariense* and *Bradyrhizobium japonicum* are the two dominant rhizobium species in root nodules of lupin and serradella plants growing in Europe. *Syst Appl Microbiol*. 2011;34:368–75.
11. Ainouche AK, Bayer RJ. Phylogenetic relationships in *Lupinus* (*Fabaceae*: *Papilionoideae*) based on internal transcribed spacer sequences (ITS) of nuclear ribosomal DNA. *Am J Bot*. 1999;86:590–607.
12. Howieson JG, O'Hara GW, Carr SJ. Changing roles for legumes in Mediterranean agriculture: developments from an Australian perspective. *Field Crop Res*. 2000;65:107–22.
13. Nutt B. Serradella for acid soils in Western Australia. In: Michalk DL, Craig A, Collins WJ, editors. 2nd national Alternative Pasture Legumes Workshop; Coonawarra. 1994. p. 50–2.
14. Howieson JG, Reeve N, Yates RJ. The selection of effective *Bradyrhizobium* sp. (*Lupinus*) for new lupin and serradella species. In: Dracup M, Palta J, editors. Proceedings of the First Australian Lupin Technical Symposium. Perth: Department of Agriculture; 1994. p. 270–3.
15. Howieson JG, Ewing MA, D'antuono MF. Selection for acid tolerance in *Rhizobium meliloti*. *Plant Soil*. 1988;105:179–88.
16. Beringer JE. R factor transfer in *Rhizobium leguminosarum*. *J Gen Microbiol*. 1974;84:188–98.
17. Terpolilli JJ. Why are the symbioses between some genotypes of *Sinorhizobium* and *medicago* suboptimal for N<sub>2</sub> fixation? PhD Thesis, Murdoch University, Murdoch. 2009.
18. NCBI BLAST. [<http://blast.ncbi.nlm.nih.gov/Blast.cgi>]. Accessed 12 March 2012.
19. Howieson JG, Fillery I, Legocki AB, Sikorski MM, Stepkowski T, Minchin FR, et al. Nodulation, nitrogen fixation and nitrogen balance. In: Gladstones J, Hamblin J, Atkins C, editors. Lupins: production and utilisation. U.K.: CAB International; 1998. p. 149–80.
20. Gladstones JS. Observations on the environment and ecology of some annual legumes in southern Italy. *Plant Introduction Rev, Div Plant Industry, CSIRO*. 1973;9:9.
21. Dilworth MJ. The plant as the genetic determinant of leghaemoglobin production in the legume root nodule. *Biochimica et Biophysica Acta*. 1969; 184:432–41.
22. Liolios K, Mavromatis K, Tavernarakis N, Kyrpides NC. The Genomes On Line Database (GOLD) in 2007: status of genomic and metagenomic projects and their associated metadata. *Nucleic Acids Res*. 2008;36:D475–479.
23. Reeve WG, Tiwari RP, Worsley PS, Dilworth MJ, Glenn AR, Howieson JG. Constructs for insertional mutagenesis, transcriptional signal localization and gene regulation studies in root nodule and other bacteria. *Microbiology*. 1999;145:1307–16.
24. Protocols and sample preparation information. [<http://jgi.doe.gov/collaborate-with-jgi/pmo-overview/protocols-sample-preparation-information/>]
25. Bennett S. *Solexa Ltd. Pharmacogenomics*. 2004;5:433–8.
26. Margulies M, Egholm M, Altman WE, Attiya S, Bader JS, Bemben LA, et al. Genome sequencing in microfabricated high-density picolitre reactors. *Nature*. 2005;437:376–80.
27. JGI: Joint Genome Institute. [<http://www.jgi.doe.gov>]
28. Zerbino DR. Using the Velvet *de novo* assembler for short-read sequencing technologies. *Curr Protoc Bioinformatics*. 2010;Chapter 11:Unit 11–15.
29. Ewing B, Green P. Base-calling of automated sequencer traces using phred. II. Error probabilities. *Genome Res*. 1998;8:186–94.
30. Ewing B, Hillier L, Wendl MC, Green P. Base-calling of automated sequencer traces using phred. I. Accuracy assessment. *Genome Res*. 1998;8:175–85.
31. Gordon D, Abajian C, Green P. Consed: a graphical tool for sequence finishing. *Genome Res*. 1998;8:195–202.
32. Han C, Chain P. Finishing repeat regions automatically with Dupfinisher. In: Proceeding of the 2006 international conference on bioinformatics & computational biology. Edited by Valafar HRAH. Las Vegas, Nevada, USA: CSREA Press; 2006. p. 141–46.
33. Hyatt D, Chen GL, Locascio PF, Land ML, Larimer FW, Hauser LJ. Prodigal: prokaryotic gene recognition and translation initiation site identification. *BMC Bioinformatics*. 2010;11:119.
34. Mavromatis K, Ivanova NN, Chen IM, Szeto E, Markowitz VM, Kyrpides NC. The DOE-JGI Standard operating procedure for the annotations of microbial genomes. *Stand Genomic Sci*. 2009;1:63–7.
35. Chen IM, Markowitz VM, Chu K, Anderson I, Mavromatis K, Kyrpides NC, et al. Improving microbial genome annotations in an integrated database curation. *Plos One*. 2013;8:e54859.
36. Pati A, Ivanova NN, Mikhailova N, Ovchinnikova G, Hooper SD, Lykidis A, et al. GenePRIMP: a gene prediction improvement pipeline for prokaryotic genomes. *Nat Methods*. 2010;7:455–7.
37. Lowe TM, Eddy SR. tRNAscan-SE: a program for improved detection of transfer RNA genes in genomic sequence. *Nucleic Acids Res*. 1997;25:955–64.
38. Pruesse E, Quast C, Knittel K, Fuchs BM, Ludwig W, Peplies J, et al. SILVA: a comprehensive online resource for quality checked and aligned ribosomal RNA sequence data compatible with ARB. *Nucleic Acids Res*. 2007;35:7188–96.
39. Infernal: inference of RNA alignments. [<http://infernal.janelia.org/>]
40. Markowitz VM, Mavromatis K, Ivanova NN, Chen IM, Chu K, Kyrpides NC. IMG ER: a system for microbial genome annotation expert review and curation. *Bioinformatics*. 2009;25:2271–8.
41. Tamura K, Peterson D, Peterson N, Stecher G, Nei M, Kumar S. MEGA5: Molecular Evolutionary Genetics Analysis using Maximum Likelihood, Evolutionary Distance, and Maximum Parsimony Methods. *Mol Biol Evol*. 2011;28:2731–9.
42. Nei M, Kumar S. *Molecular Evolution and Phylogenetics*. New York: Oxford University Press; 2000.
43. Felsenstein J. Confidence limits on phylogenies: an approach using the bootstrap. *Evolution*. 1985;39:783–91.
44. Field D, Garrity G, Gray T, Morrison N, Selengut J, Sterk P, et al. Towards a richer description of our complete collection of genomes and metagenomes "Minimum Information about a Genome Sequence" (MIGS) specification. *Nature Biotechnol*. 2008;26:541–7.
45. Woese CR, Kandler O, Wheelis ML. Towards a natural system of organisms: proposal for the domains Archaea, Bacteria, and Eucarya. *Proc Nat Acad Sci USA*. 1990;87:4576–9.
46. Garrity GM, Bell JA, Lilburn T. Phylum XIV. *Proteobacteria*. In: Garrity GM, Brenner DJ, Krieg NR, Staley JT, editors. *Bergey's Manual of Systematic Bacteriology*. Volume 2. 2nd ed. New York: Springer - Verlag; 2005. p. 1.
47. Garrity GM, Bell JA, Lilburn T. Class I. *Alphaproteobacteria*. In: Garrity GM, Brenner DJ, Krieg NR, Staley JT, editors. *Bergey's Manual of Systematic Bacteriology*. 2nd ed. New York: Springer - Verlag; 2005.
48. Validation of publication of new names and new combinations previously effectively published outside the IJSEM. List no. 106. *Int J Syst Evol Microbiol*. 2006; 56:1–6.
49. Kuykendall LD. Order VI. *Rhizobiales* ord. nov. In: Garrity GM, Brenner DJ, Krieg NR, Staley JT, editors. *Bergey's Manual of Systematic Bacteriology*. 2nd ed. New York: Springer - Verlag; 2005. p. 324.
50. Garrity GM, Bell JA, Lilburn T. Family VII. *Bradyrhizobiaceae*. In: Brenn DJ, editor. *Bergey's Manual of Systematic Bacteriology*. Volume 2. 2nd ed. 2005. p. 438.
51. Validation of publication of new names and new combinations previously effectively published outside the IJSEM. List no. 106. *Int J Syst Evol Microbiol*. 2005; 55:2235–2238.
52. Ashburner M, Ball CA, Blake JA, Botstein D, Butler H, Cherry JM, et al. Gene ontology: tool for the unification of biology. The Gene Ontology Consortium. *Nature Genet*. 2000;25:25–9.