



# PIGLET MORTALITY IN DANISH ORGANIC HERDS

---

Lena Rangstrup-Christensen, DVM, PhD Fellow

Department of Animal Science, Aarhus University, Denmark

Supervisors:

Jan Tind Sørensen & Lene Juul Pedersen

A U

AARHUS  
UNIVERSITY  
SCIENCE AND TECHNOLOGY

LENA RANGSTRUP-CHRISTENSEN  
DVM, PHD FELLOW

---

IPWC 2015  
29 APRIL 2015



# THE PROJECT

---

- ▶ **Why?** An estimated preweaning mortality between 25 and 40%
- ▶ **What?** Identifying piglet mortality risk factors in Danish organic herds
- ▶ **How?**
  1. Registrations on the piglet mortality during one year
  2. Necropsies on a sample of dead piglets

# ON-FARM MORTALITY REGISTRATIONS

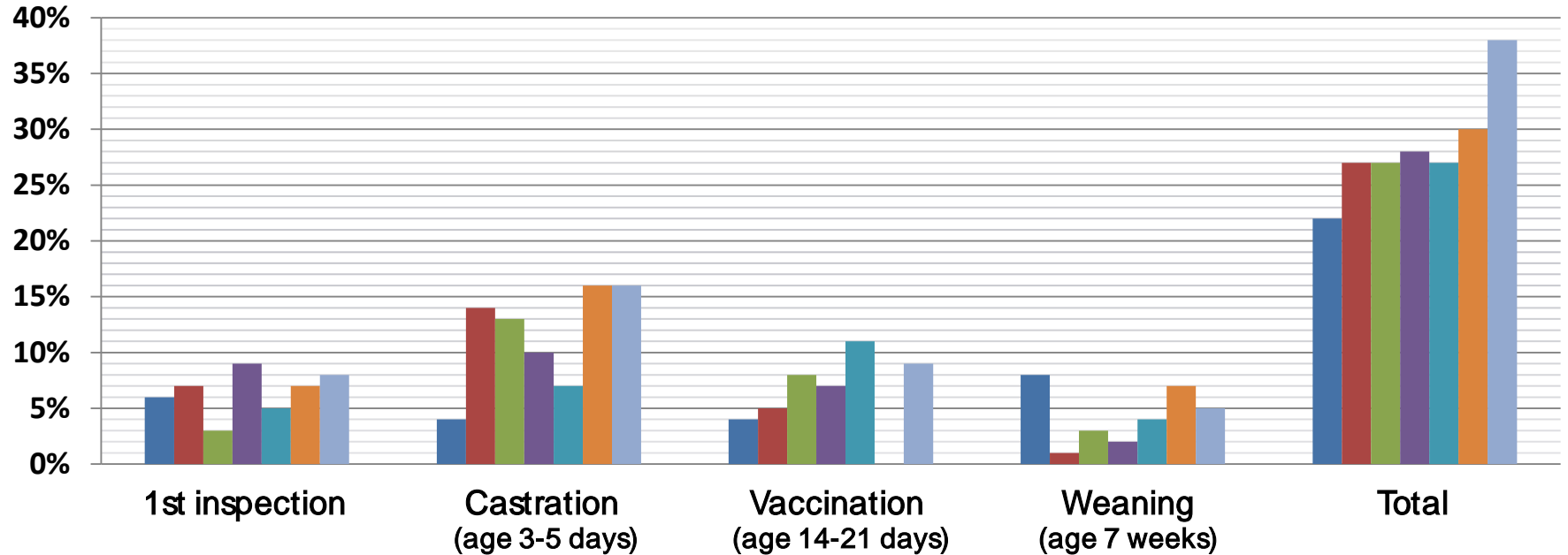
- ▶ A pocket sized booklet.
- ▶ Sows: Parity, body condition, lameness etc.
- ▶ Counting and registration of piglets;
  - 1st inspection after birth
  - Castration (or 3-5 days after birth)
  - Vaccination (or 14-21 days after birth)
  - Weaning (7 weeks after birth)
- ▶ June 2014 until May 2015.

Registrations on approximately 6000 farrowings

Hold:			774	911	635	642	705
So nr.	520		63	26	115	65	44
Hytte	73		2	1	4	4	3
Laag nr	5						
Fen nr/fælles fold							
Indsæt foremark			15/2	25/2	14/1	25/2	13/2
Dato	13/2		7	7	3	2	3
hæthed (D-1) + Huld (2-4)	3		24/2	24/2	24/2	24/2	24/2
Føring, dato	24/2						
L. tilsyn efter føring, dato							
Føring			3		6	2	1
Dødfødt	5		1	5	1	5	1
Døde efter føring (S/A)			20	3	18	24	22
Levendefødt	19		2				
Heraf små (max. 23 cm)			2				
Indtil kastrering			5	+9	-3	-6	
Kuldsjævnng +/-	-1		17	14	14	14	15
Gylte			24	24	24	24	24
Antal pætter	14		14	12	14	12	13
Kastrering							
Kastrering dato	30/2						
Antal grise v./start	14						
Aliv. efter optæl, antal							
Evt. kuldsjævnng +/-			7			-2	-2
Førgæld/vaccination			13/2	1	13/2	9/2	13/2
Dato	13/2		13		10	12	13
Antal grise	13						
Fravæning			24/2	4/2	24/2	24/2	24/2
Dato	24/2		11	2	12	12	13
Antal grise frav. soen	12						
Noter (evt. optæl*)				SUR		aliv?	

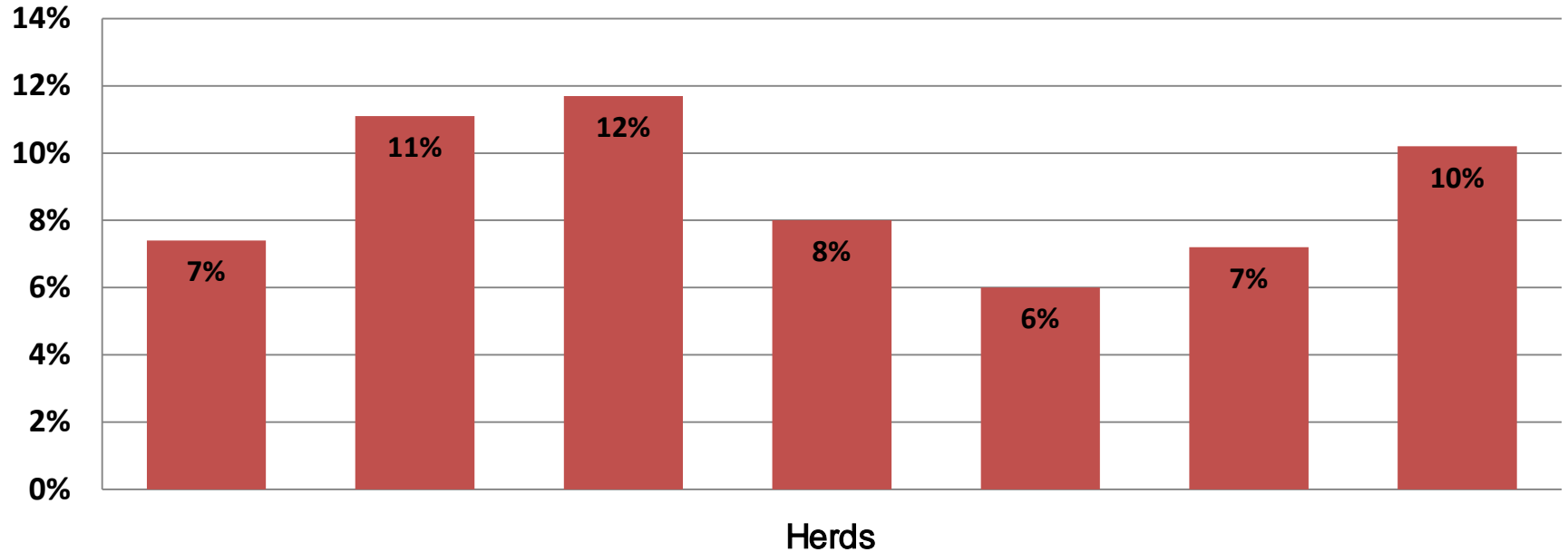


# PREWEANING MORTALITY - SUMMER 2014





# STILLBORN PIGLETS – SUMMER 2014





# LITTER SIZE - SUMMER 2014

---

Herds							
Total litter size	15,90	17,62	17,58	14,73	15,71	14,90	15,07
Live born	14,72	15,66	15,53	13,55	14,77	13,83	13,54
Stillborn	1,18	1,96	2,05	1,18	0,94	1,07	1,53

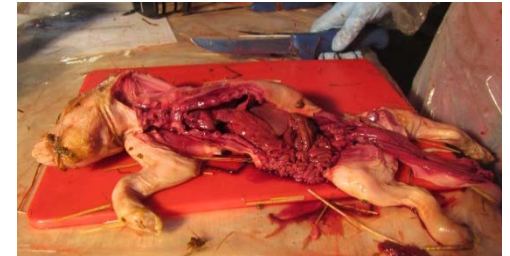


# NECROPSIES

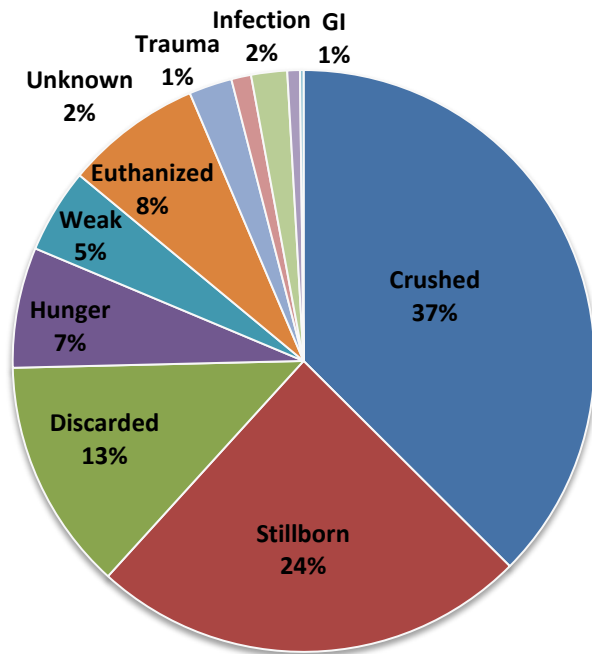
---

- ▶ Dead piglets from approximately 25 sows on each farm.
- ▶ 4 seasonal collection periods.
- ▶ Necropsies performed at the farms.
- ▶ Cause of death, body condition, stomach content etc.

**Necropsies on approximately 4000 piglets**

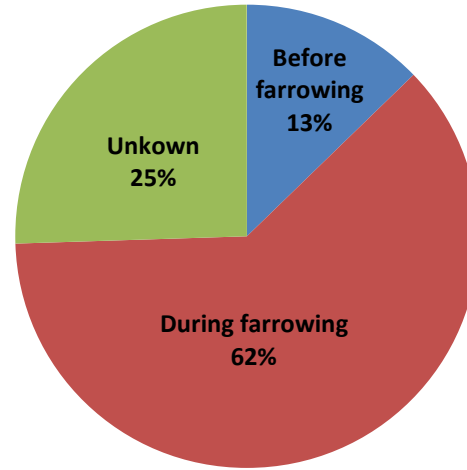
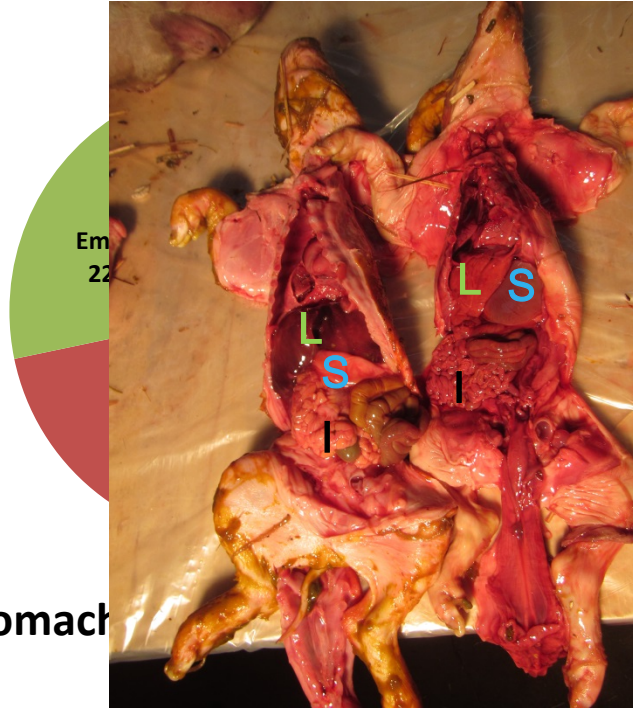


# NECROPSIES - SUMMER 2014





# NECROPSIES - SUMMER 2014



Time of death - Stillborn piglets

# SUMMARY PRELIMINARY RESULTS

---

- ▶ On farm mortality registrations – high mortality
  - › Hot summer in 2014!
- ▶ Necropsies
  - › Crushed piglets represent the largest group of diagnoses
  - › The majority of the crushed piglets had suckled before dying
  - › The majority of stillborn piglets die during the farrowing





# PERSPECTIVES

---

- ▶ Influence of sows parity, body condition and lameness?
- ▶ Enhanced survival if born in a small rather than in large litter?
- ▶ Higher mortality in piglets with many stillborn litter mates?
- ▶ Are small piglets more prone to crushing?
- ▶ Different patterns in mortality depending on season?
- ▶ Influence of management factors such as the use of nursing sows?



# THANK YOU FOR YOUR ATTENTION!

---



A U

AARHUS  
UNIVERSITY  
SCIENCE AND TECHNOLOGY

LENA RANGSTRUP-CHRISTENSEN  
DVM, PHD FELLOW

IPWC 2015  
29 APRIL 2015