

ROYAL SOCIETY
OPEN SCIENCE

rsos.royalsocietypublishing.org

Research



CrossMark
click for updates

Cite this article: Nicholson DB, Holroyd PA, Valdes P, Barrett PM. 2016 Latitudinal diversity gradients in Mesozoic non-marine turtles. *R. Soc. open sci.* **3**: 160581. <http://dx.doi.org/10.1098/rsos.160581>

Received: 5 August 2016

Accepted: 24 October 2016

Subject Category:

Earth science

Subject Areas:

palaeontology/biogeography/ecology

Keywords:

latitudinal biodiversity gradient, Testudinata, subsampling, genus richness, geographical range

Author for correspondence:

David B. Nicholson

e-mail: david.nicholson@nhm.ac.uk

Electronic supplementary material is available online at <https://dx.doi.org/10.6084/m9.figshare.c.3571563>.

THE ROYAL SOCIETY
PUBLISHING


Latitudinal diversity gradients in Mesozoic non-marine turtles

David B. Nicholson¹, Patricia A. Holroyd², Paul Valdes³ and Paul M. Barrett¹

¹Department of Earth Sciences, The Natural History Museum, Cromwell Road, London SW7 5BD, UK

²Museum of Paleontology, University of California, 1101 Valley Life Sciences Building, Berkeley, CA 94720, USA

³School of Geographical Sciences, University of Bristol, University Road, Bristol BS8 1SS, UK

 DBN, 0000-0002-1296-5673; PMB, 0000-0003-0412-3000

The latitudinal biodiversity gradient (LBG)—the pattern of increasing taxonomic richness with decreasing latitude—is prevalent in the structure of the modern biota. However, some freshwater taxa show peak richness at mid-latitudes; for example, extant Testudines (turtles, terrapins and tortoises) exhibit their greatest diversity at 25° N, a pattern sometimes attributed to recent bursts of climatically mediated species diversification. Here, we test whether this pattern also characterizes the Mesozoic distribution of turtles, to determine whether it was established during either their initial diversification or as a more modern phenomenon. Using global occurrence data for non-marine testudinate genera, we find that subsampled richness peaks at palaeolatitudes of 15–30° N in the Jurassic, 30–45° N through the Cretaceous to the Campanian, and from 30° to 60° N in the Maastrichtian. The absence of a significant diversity peak in southern latitudes is consistent with results from climatic models and turtle niche modelling that demonstrate a dearth of suitable turtle habitat in Gondwana during the Jurassic and Late Cretaceous. Our analyses confirm that the modern testudinate LBG has a deep-time origin and further demonstrate that LBGs are not always expressed as a smooth, equator-to-pole distribution.

1. Introduction

The modern latitudinal biodiversity gradient (LBG), with a tropical peak in species richness that declines polewards, is the predominant biogeographical pattern on the Earth [1,2]. It shows remarkable consistency across taxonomic groups and

© 2016 The Authors. Published by the Royal Society under the terms of the Creative Commons Attribution License <http://creativecommons.org/licenses/by/4.0/>, which permits unrestricted use, provided the original author and source are credited.

habitats [1,2] and exceptions are rare (e.g. [3]). Although this fundamental and global macroecological pattern has been assumed to be conserved through deep time, recent analyses of Mesozoic and Cenozoic organismal distributions have indicated that this may not be the case [4]. A modern-type LBG can only be identified unequivocally during several Palaeozoic intervals and over the past 30 Myr [4]: indeed, that of Cenozoic North American land mammals has been established for only 4 Myr [5]. In all cases, it is generally associated with global icehouse conditions [4,5].

Extant Testudines (turtles, terrapins and tortoises, referred to as turtles collectively herein) are an exception to the modern LBG. This clade shows a complex, asymmetric pattern with a pronounced diversity peak at 25°N and the absence of a major peak in the Southern Hemisphere [6,7]. It has been posited that this Northern Hemisphere peak in richness is a consequence of either an underlying pattern of decreasing range size at lower latitudes in combination with geographical centre of origin at these latitudes [7], or a set of complex correlations among temperature, land area, and phylogenetic and biogeographic history [6]. However, modern data do not allow us to choose between these alternatives. Moreover, prior studies of turtle latitudinal distributions have not attempted to determine whether this pattern has a deep-time origin or whether it is a consequence of more recent climatic and geographical factors.

Mapping fossil occurrences, placing them within their environmental contexts and assessing species richness within latitudinal bins through time (usually using various forms of subsampling methods) have all been used to test for the existence of a modern-type LBG in deep time [8]. Here, we analyse an occurrence dataset of Mesozoic non-marine testudinate genera to test two hypotheses: (i) Did Mesozoic turtle genus richness vary with palaeolatitude through time?; and, if so, (ii) Was a modern-type LBG established in this earlier greenhouse world? We also compare testudinate latitudinal distributions with those previously published for other Mesozoic vertebrates (dinosaurs [9] and pseudosuchians [10]) and discuss potential factors that may have influenced these patterns. Understanding the processes governing biogeographic distributions over extended spatial and temporal scales, which are accessible only via the fossil record, can help us to quantify the likely risks of and responses of extant species to contemporary climate change, in terms of identifying possible future extinctions, extirpations, range changes and changes to adaptations in niche exploitation [11–15].

2. Methods

2.1. Data

Following a period of additional data entry and revision by the authors, data on fossil turtle occurrences were drawn from the Paleobiology Database (PBDB; www.paleobiodb.org) via the Fossilworks portal (<http://fossilworks.org>) on 2 August 2016 using the search terms Testudinata and Mesozoic, comprising 1862 occurrences of 271 genera in 1103 PBDB collections (electronic supplementary material, Dataset S1, sheet 1) [16]. Occurrences of marine taxa, ootaxa (fossil eggs) and other ichnotaxa (as listed in [17]) were removed, leaving 1506 occurrences of 192 genera in 894 PBDB collections (electronic supplementary material, Dataset S1, sheet 2). Two temporal binning schemes were used. For both raw and subsampled richness estimates, data were partitioned into 15° palaeolatitudinal bands for the Maastrichtian (Maas), Campanian (Camp), Berriasian–Santonian (rCret), Jurassic (Jur) and Triassic (Tr) bins. Palaeolatitudinal estimates were generated by the Fossilworks website from the present-day coordinates of each collection, based on tectonic plate rotations from the PALEOMAP Project (www.scotese.com). Unique genera were counted for each bin. We selected genera in order to use the most stable taxonomy while maximizing the available occurrences. Palaeolatitudinal bands of 15° were the smallest feasible geographical divisions for statistically meaningful sample sizes per bin. A second binning scheme for the generalized least-squares (GLS) regressions (see below) split the data into Jurassic, Early Cretaceous and Late Cretaceous. Unique turtle-bearing formation (TurtBF) names were counted for each bin. Where occurrences did not have a named formation, the group name was inserted instead if this was certain not to artificially inflate the formation count (i.e. other named formations from that group were not in the dataset), or by the collection/locality name if no other deposits from that age or geographical area existed in the dataset, with justification for these decisions noted in electronic supplementary material, Dataset S1. A separate download of Mesozoic Tetrapoda, similarly limited to include only non-marine taxon occurrences and exclude ichnotaxa (as used in [18]), provided counts of tetrapod-bearing collections (TetBC) for the GLS regressions. It is worth noting that, in the Mesozoic, with the exception of the now-extinct Nanhsiungchelyidae and some other stem-turtles, non-marine turtles were largely

associated with freshwater habitats, with the origin of modern land tortoises (Testudinidae) in the Palaeogene [19].

Non-marine area (NMA), i.e. the area comprising both land and terrestrial freshwater aquatic ecosystems, was calculated in 5° latitudinal bands from a set of palaeogeographic reconstructions from each relevant geological stage. These reconstructions used the same methodology as previous work [20]. These 5° latitudinal bands were combined into 15° bands and the geometric mean of the land area calculated for each of the time bins analysed in the GLS (electronic supplementary material, Dataset S1, sheet 4 and Dataset S2).

Data on the latitudinal distribution of extant turtle species were taken from Angielczyk *et al.* [6]. These data were re-binned from species to genus level and from 5° to 15° latitudinal bins, in order to match the binning strategy used for the fossil turtles. From these data a new statistic, number of genera divided by \log_{10} non-marine area per latitudinal band, was calculated as an alternative way of measuring richness per unit area and that can be used to compare with fossil richness and distribution data.

2.2. Analyses

Raw genus richness and subsampled genus richness was calculated for each time bin (Tr, Jur, rCret, Camp, Maas) and each 15° latitudinal band. Subsampled richness was estimated with Shareholder Quorum Subsampling (SQS) [21], using Perl script version 4.3, available in the supplementary material of Benson *et al.* [17], in order to account for unevenness in sampling.

Multiple generalized least-squares regression models were calculated using the `gls()` function of the `nlme` package [22] in R [23]. The response variable of raw counts of genus richness through latitude for each time bin (Jurassic, Early Cretaceous and Late Cretaceous) was analysed in the following combinations: (i) turtle-bearing formation counts (TurtBF), used here as a proxy for the diversity of available habitats, as the lithologies and sedimentary features representing different depositional settings in different areas are typically recognized by different formation names; (ii) counts of non-marine tetrapod-bearing collections (TetBC), a proxy for sampling opportunity, showing the potential for fossil bone of any type to be recovered from a particular locality [24]; (iii) non-marine area (NMA), a proxy for the extent of freshwater aquatic and terrestrial areas potentially available as turtle habitat and reflecting the changing distribution and extent of land masses through time; (iv) TurtBF + NMA; (v) TetBC + NMA and (vi) an intercept-only null model. To determine the best predictors, a preferred model from each set was identified by the second-order Akaike information criterion (AICc) weight, which contains a correction for small sample sizes [25,26] using the `aictab()` function of the `AICcmodavg` package [27] in R. Model *p*-values were computed by comparing the model with the null model for the response variable using an ANOVA. The R^2 reported is the generalized R^2 of Nagelkerke [28], calculated manually from the GLS output of the models and null models, using the formula expressed in the supplementary information of Mannion *et al.* [9].

3. Results

The palaeolatitudinal distribution of Mesozoic turtles extends both further north and south than today, from approximately 72° N to 76° S (figures 1 and 2). As previously reported [18], the absence of turtles from the highest northern palaeolatitudes (from which other tetrapods have been sampled) indicates real extrinsic limits on their distribution rather than a sampling bias. Raw genus richness peaks at 30–45° N in all time bins except the Maastrichtian, which has peak richness at 45–60° N (figure 1c). A similar pattern is recovered from subsampled richness, with the exception that the Jurassic peak occurs further south at 15–30° N (figure 1d). The Southern Hemisphere contributes fewer occurrences to the dataset than the Northern Hemisphere in all time bins (figure 1a) with very low numbers of genera and an essentially flat LBG.

Generalized least-squares (GLS) regressions on observed genus counts per latitudinal band for the Early and Late Cretaceous indicate that different models explain the observed distributional patterns at different times (table 1). For the Jurassic, the null (intercept-only) model is preferred with a sample size corrected Akaike Information Criterion (AICc) weight of 0.98 ($R^2 = 0.947$, $p < 0.0001$), despite generalized R^2 values of 0.915 and 0.683 for the turtle-bearing formations (TurtBF) and tetrapod-bearing collections (TetBC) models, respectively. The Jurassic non-marine area (NMA) model performed very poorly (generalized $R^2 = 0.002$) and the AICc of the TurtBF + NMA and TetBC + NMA models was incalculable, due to the number of parameters being one less than the number of observation points. For the Early Cretaceous the TurtBF model is strongly preferred, with an AICc weight of 0.94 and generalized

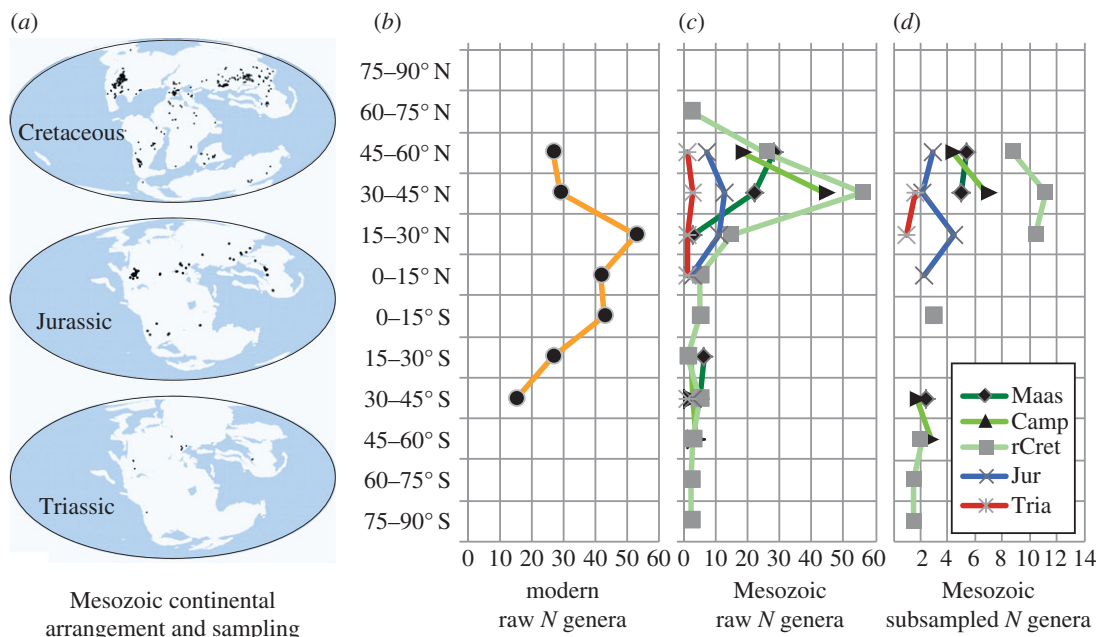


Figure 1. Latitudinal generic richness of non-marine turtles in the Recent and Mesozoic. (a) Palaeocontinental reconstructions from <http://fossilworks.org> [29]. Black dots indicate the positions of non-marine turtle-bearing collections in the database. (b) Raw counts of Recent non-marine turtle genera by latitude, based on data from [6]. (c) Raw counts of Mesozoic non-marine turtle genera by latitude. (d) Subsampled estimates of relative non-marine turtle generic richness using Shareholder Quorum Subsampling (SQS). Maas, Maastrichtian; Camp, Campanian; rCret, Berriasian–Santonian; Jur, Jurassic; Tria, Triassic. N.B. As these time bins vary greatly in length, it is inappropriate to compare values between them. Values should only be compared across latitude within each time bin.

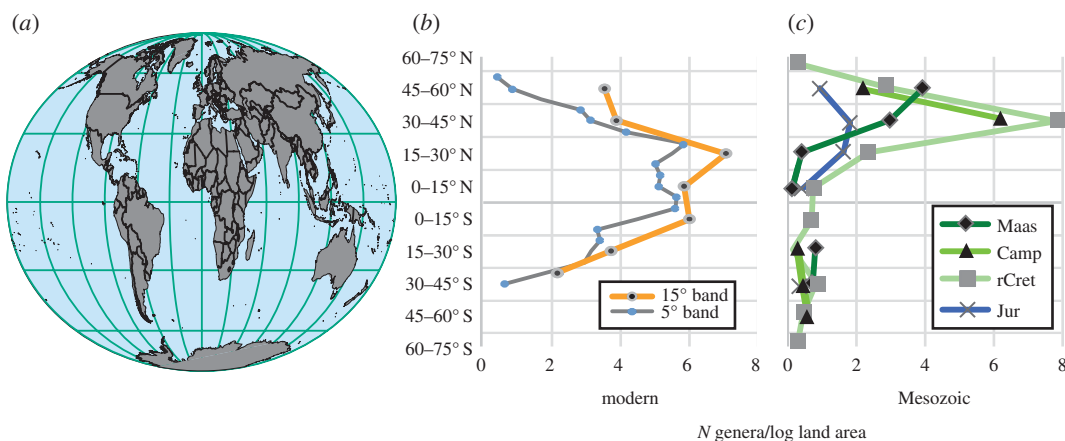


Figure 2. Raw counts of non-marine turtle genera by latitude divided by \log_{10} land area. (a) Recent global continental configuration modified from <http://fossilworks.org> [29]. (b) Recent data from [6], taken at genus level and re-binned at 5° (blue dots) and 15° (black dots) latitudinal bands, and divided by Recent \log_{10} land area. (c) Mesozoic non-marine turtle genera by 15° latitudinal bands, and divided by \log_{10} palaeo-land area. Abbreviations as in figure 1.

R^2 of 0.931, and second preference given to the TetBC + NMA model (AICc weight = 0.04) which, despite having a higher R^2 value (0.937), was heavily penalized for over-fitting. For the Late Cretaceous the marginally preferred model is TetBC (AICc weight = 0.78, $R^2 = 0.948$) with TurtBF in second place (AICc weight = 0.18, $R^2 = 0.924$, $p < 0.0001$). Between time bins, TetBC had lowest significance as an explanatory variable in the Jurassic ($R^2 = 0.683$, $p = 0.0165$), high significance in the Early Cretaceous ($R^2 = 0.839$, $p = 0.0001$) and greatest significance in the Late Cretaceous (see above). The NMA-only models performed poorly in all time bins.

Table 1. Comparison of generalized least-squares (GLS) regression models for observed non-marine turtle genus richness in 15° latitudinal bands for the Late Cretaceous, Early Cretaceous and Jurassic. TurtBF, non-marine turtle-bearing formations; TetBC, non-marine tetrapod-bearing collections; NMA, non-marine area; R^2 , generalized R^2 ; AICc, second-order Akaike information criterion; w_i , AICc weight; LL, log-likelihood.

model sets	R^2	p -value	AICc	Δ AICc	w_i	LL
Late Cretaceous						
genus diversity ~ TetBC	0.948	<0.0001	0.15	0.00	0.78	5.92
genus diversity ~ TurtBF	0.924	<0.0001	3.11	2.95	0.18	4.45
genus diversity ~ TetBC + NMA	0.965	<0.0001	6.29	6.14	0.04	7.52
genus diversity ~ TurtBF + NMA	0.924	<0.0001	12.44	12.29	0.00	4.45
null	—	—	18.14	17.99	0.00	−5.87
genus diversity ~ NMA	0.086	0.3978	23.02	22.87	0.00	−5.51
Early Cretaceous						
genus diversity ~ TurtBF	0.931	<0.0001	−0.66	0.00	0.94	5.73
genus diversity ~ TurtBF + NMA	0.937	<0.0001	5.79	6.45	0.04	6.10
genus diversity ~ TetBC	0.839	0.0001	7.01	7.67	0.02	1.89
genus diversity ~ TetBC + NMA	0.868	0.0001	12.37	13.03	0.00	2.81
null	—	—	18.62	19.28	0.00	−6.31
genus diversity ~ NMA	0.407	0.0301	18.72	19.38	0.00	−3.96
Jurassic						
null	—	—	15.22	0.00	0.98	−2.61
genus diversity ~ TurtBF	0.915	0.0005	22.92	7.70	0.02	3.54
genus diversity ~ TetBC	0.683	0.0165	29.48	14.26	0.00	0.26
genus diversity ~ NMA	0.002	0.919	35.21	19.99	0.00	−2.61
genus diversity ~ TurtBF + NMA	0.915	0.0021	∞	∞	0.00	3.54
genus diversity ~ TetBC + NMA	0.69	0.0534	∞	∞	0.00	0.32

4. Discussion

In the Mesozoic greenhouse world, non-marine turtles ranged further north and south than in the modern day (see also [18]). Triassic turtles achieved a worldwide distribution, but are too rare to reveal any latitudinal patterns. By contrast, Jurassic turtles show contrasting peaks between raw (30–45° N) and subsampled (15–30° N) genus richness, but exhibit the earliest evidence of a mid-latitude, Northern Hemisphere diversity peak. In the Cretaceous, the peak in both raw and subsampled generic richness was further north at 30–45° N (rather than 15–30° N as seen today [6]), and the raw data suggest that it may have shifted even further north to 45–60° N during the Maastrichtian although this peak is less pronounced in the subsampled data (figure 1c). These results are consistent with other studies that have demonstrated that LBGs are not constant through time, but are dynamic patterns that are strongly affected by changes in global climatic regimes [4,15]. They cannot be regarded as fixed global patterns for all taxa, contrary to widely held assumptions, nor can we expect future LBGs to necessarily retain a tropical to subtropical peak [4], within the climatic constraints imposed by the biological limitations of ectothermy and obligate ovipary [30]. Similar to the pattern in extant turtles [6], we found a global diversity peak at mid-latitudes in the Northern Hemisphere. The subtle shift of the peak to 45–60° N in the Maastrichtian subsampled richness coincides with a well-documented northward expansion of taxa in North America at this time [31]. This range expansion might have been driven by short-term continental scale temperature increases from the Early to Late Maastrichtian that enabled some turtles to increase their ranges [31,32]. The persistence of peak richness at mid-latitudes in the Northern Hemisphere throughout the Mesozoic, despite turtles having a wider latitudinal range than at present [18], and the evidence for a propensity for range expansion in response to climate change in both

the Cretaceous [31] and more recent times [15], suggests that persistent abiotic mechanisms control these latitudinal patterns.

Differences in sampling intensity among regions may influence the patterns recovered by a global analysis; for example, it is plausible that the mid-latitude northern peak might be driven primarily by the fossil record from the more intensively sampled North American land mass in which the most occurrences are recorded. However, the eastern half of the Northern Hemisphere contributes more genera (Triassic, $n = 4$; Jurassic, $n = 20$; Cretaceous, $n = 90$) to the dataset than the western half (Triassic, $n = 2$; Jurassic, $n = 7$; Cretaceous, $n = 54$), so the peaks we find in taxonomic richness are not driven simply by the land mass with most occurrences. Similarly, it may be tempting to attribute the absence of a Southern Hemispheric peak in genus richness to the smaller number of occurrences available, even though the modern turtle LBG also lacks a southern peak [6]. However, climatic niche modelling indicates that, at least during the Maastrichtian, habitats with the combination of temperature and precipitation favoured by turtles were rare in Gondwana [33]. Moreover, during the Late Jurassic, large swathes of the Gondwanan mid-latitudes were covered by desert [34], which is also incompatible with high turtle diversity. This lack of suitable ecospace suggests that the absence of a Southern Hemispheric richness peak might be a genuine signal, controlled by biological and environmental factors, rather than a sampling issue.

Determining the factors that best explain the patterns observed in the turtle data revealed that, in strong contrast with previous work on Mesozoic dinosaurs [9], non-marine area did not contribute to the best predictive models (table 1). The comparative lack of importance of non-marine area probably reflects the fact that it is a poor proxy measure for available turtle habitats: indeed, dividing the raw counts of genera by \log_{10} non-marine area has negligible effect on the genus richness profile in either the Recent or Mesozoic (figure 2). Many Mesozoic non-marine turtles are freshwater aquatic and some are inferred to be obligately aquatic [35]. Today, freshwater ecosystems comprise only a small proportion of total non-marine land area, with estimates ranging from approximately 0.8% to approximately 3% of the Earth's surface [36]. Areas of greatest taxonomic richness for extant turtles are associated with extensive river/wetland habitats [37], and several studies of other aquatic vertebrates have shown only partial concordance between areas of high terrestrial and high aquatic richness [38].

Extant crocodylians and their extinct relatives have an extensive fossil record and are potentially better ecological analogues for turtles than dinosaurs; like turtles, many members of this clade are freshwater aquatic and all are ectotherms. Mannion *et al.* [10] recovered a tropical peak in subsampled pseudosuchian genus richness in the Triassic and evidence of high diversity in individual low-palaeolatitude formations during the Cretaceous, a pattern that is replicated today. The strong contrast between the pseudosuchian LBG and that of both Mesozoic and extant turtles may be due, in part, to greater morphological and ecological variation among Mesozoic than Recent pseudosuchians, as some extinct members of the clade (e.g. notosuchians, protosuchians) exploited fully terrestrial niches [39,40], or to different climatic preferences between pseudosuchians and turtles [41].

The association between high modern turtle taxic richness and large river systems may explain, in part, our finding that the number of turtle-bearing formations is one of the best predictors of past taxonomic richness. Terrestrial geological formations typically comprise rocks within a single sedimentary basin that correspond to ancient watersheds. Therefore, as we sample more formations, we also sample more ancient watersheds and would expect taxonomic richness to increase (as the number of watersheds is a key predictor for modern turtle richness [6]). However, it is difficult to say whether this effect is eclipsed by the well-known covariance of fossil-bearing formations and taxonomic richness in the fossil record [42], which may be indicated by the strong predictive power of the sampling proxy (tetrapod-bearing collections) in the Early and Late Cretaceous models.

In modern biomes, LBGs for taxa associated with freshwater habitats are generally less steep than those found in terrestrial or marine habitats [1,43]. These differences may be attributable to the more even distribution of freshwater biome area between temperate and tropical zones [1,44] or greater concentration of taxonomic richness in key freshwater ecoregions [38]. Furthermore, several aquatic vertebrate and invertebrate groups depart from the expected pattern of high low-latitude richness, showing either flat diversity (Caudata and Trichoptera [45]), greater richness in temperate regions (Ephemeroptera, Plecoptera, amphipod crustaceans, shredder detritivores [45,46]) or other complex patterns (aquatic plants [43]).

Although current data cannot be used to test all of the hypotheses proposed for the formation of the modern turtle LBG [6,7], these Mesozoic data do allow us to eliminate some suggested mechanisms. Our finding that richness is not a function of land area allows us to reject hypotheses that suggest that the modern gradient is a simple function of greater geographical area in the tropics [43]. Rather the more

equable climates of the Mesozoic allowed expansion of the latitudinal range of turtles [18] and probably led to novel combinations of the abiotic factors that influence freshwater ecosystems [41]. Comparison of the latitudinal richness patterns of Mesozoic and modern turtles strongly suggests that today's pattern is one that became established early in testudinate history, potentially as early as the Jurassic, and the limited geographical shifts we observe may reflect extended niche conservatism through time [15,47–51]. Moreover, climate appears to have had a profound influence on turtle distributions and may account for the asymmetrical global distribution of the turtle LBG around the equator, in the Mesozoic at least.

Data accessibility. The datasets and code supporting this article have been uploaded as part of the electronic supplementary material.

Authors' contributions. D.B.N., P.A.H. and P.M.B. designed the research and wrote the paper; D.B.N. and P.A.H. expanded and updated occurrence data within the Paleobiology Database; P.V. provided palaeogeographic reconstructions; D.B.N. performed the statistical analyses. All authors revised and gave final approval of the manuscript for publication.

Competing interests. We have no competing interests.

Funding. This work was funded by NERC grant no. NE/J020613/1, awarded to P.M.B.

Acknowledgements. We thank Amy Waterson, Daniella Schmidt, Kenneth Johnson, Margaret Collinson, Paul Markwick, Al McGowan, Brian Rankin, Matthew Vavrek and Roger Benson for useful discussions. Other major contributors to the published data compilation in the Paleobiology Database were Matthew Carrano, Roger Benson, John Alroy, Phil Mannion, John Tennant, Kaitlin Maguire and Mark Uhen. We thank Donald Brinkman, Philip Mannion and Robert Burroughs for their helpful and constructive reviews, and Paul Markwick (GTECH, Leeds, UK) for data on palaeogeographical reconstructions. This is Paleobiology Database publication no. 271.

References

- Hillebrand H. 2004 On the generality of the latitudinal diversity gradient. *Am. Nat.* **163**, 192–211. (doi:10.1086/381004)
- Krug AZ, Jablonski D, Valentine JW, Roy K. 2009 Generation of Earth's first-order biodiversity pattern. *Astrobiology* **9**, 113–124. (doi:10.1089/ast.2008.0253)
- Wiens JJ. 2007 Global patterns of diversification and species richness in amphibians. *Am. Nat.* **170**, S86–S106. (doi:10.1086/519396)
- Mannion PD, Upchurch P, Benson RBJ, Goswami A. 2014 The latitudinal biodiversity gradient through deep time. *Trends Ecol. Evol.* **29**, 42–50. (doi:10.1016/j.tree.2013.09.012)
- Marcot JD, Fox DL, Niebuhr SR. 2016 Late Cenozoic onset of the latitudinal diversity gradient of North American mammals. *Proc. Natl Acad. Sci. USA* **113**, 7189–7194. (doi:10.1073/PNAS.1524750113)
- Angielczyk KD, Burroughs RW, Feldman CR. 2015 Do turtles follow the rules? Latitudinal gradients in species richness, body size, and geographic range area of the world's turtles. *J. Exp. Zool. B Mol. Dev. Evol.* **324B**, 270–294. (doi:10.1002/jez.b.22602)
- Hecnar SJ. 1999 Patterns of turtle species' geographic range size and a test of Rapoport's rule. *Ecography* **22**, 436–446. (doi:10.1111/j.1600-0587.1999.tb00580.x)
- Jablonski D, Belanger CL, Berke SK, Huang S, Krug AZ, Roy K, Tomasovych A, Valentine JW. 2013 Out of the tropics, but how? Fossils, bridge species, and thermal ranges in the dynamics of the marine latitudinal diversity gradient. *Proc. Natl Acad. Sci. USA* **110**, 10 487–10 494. (doi:10.1073/pnas.1308997110)
- Mannion PD, Benson RBJ, Upchurch P, Butler RJ, Carrano MT, Barrett PM. 2012 A temperate palaeodiversity peak in Mesozoic dinosaurs and evidence for Late Cretaceous geographical partitioning. *Glob. Ecol. Biogeogr.* **21**, 898–908. (doi:10.1111/j.1466-8238.2011.00735.x)
- Mannion PD, Benson RBJ, Carrano MT, Tennant JP, Judd J, Butler RJ. 2015 Climate constrains the evolutionary history and biodiversity of crocodylians. *Nat. Commun.* **6**, 8438. (doi:10.1038/ncomms9438)
- Root TL, Price JT, Hall KR, Schneider SH, Rosenzweig C, Pounds JA. 2003 Fingerprints of global warming on wild animals and plants. *Nature* **421**, 57–60. (doi:10.1038/nature01309.1)
- Visser ME. 2008 Keeping up with a warming world; assessing the rate of adaptation to climate change. *Proc. R. Soc. B* **275**, 649–659. (doi:10.1098/rspb.2007.0997)
- Quintero I, Wiens JJ. 2013 Rates of projected climate change dramatically exceed past rates of climatic niche evolution among vertebrate species. *Ecol. Lett.* **16**, 1095–1103. (doi:10.1111/ele.12144)
- Pateman RM, Hill JK, Roy DB, Fox R, Thomas CD. 2012 Temperature-dependent alterations in host use drive rapid range expansion in a butterfly. *Science* **336**, 1028–1030. (doi:10.1126/science.1216980)
- Rödger D *et al.* 2013 Evaluating the significance of paleophylogeographic species distribution models in reconstructing Quaternary range-shifts of Nearctic chelonians. *PLoS ONE* **8**, e72855. (doi:10.1371/journal.pone.0072855)
- Carrano MT, Alroy J, Benson R. 2016 Taxonomic occurrences of Mesozoic Testudinata recorded in Fossilworks, the Evolution of Terrestrial Ecosystems Database, and the Paleobiology Database. See <http://fossilworks.org>.
- Benson RBJ, Butler RJ, Alroy J, Mannion PD, Carrano MT, Lloyd GT. 2016 Near-stasis in the long-term diversification of Mesozoic tetrapods. *PLoS Biol.* **14**, e1002359. (doi:10.1371/journal.pbio.1002359)
- Nicholson DB, Holroyd PA, Benson RBJ, Barrett PM. 2015 Climate-mediated diversification of turtles in the Cretaceous. *Nat. Commun.* **6**, 7848. (doi:10.1038/ncomms8848)
- Claude J, Tong H. 2004 Early Eocene testudinoid turtles from Saint Papoul, France, with comments on the early evolution of Testudinoidea. *Oryctos* **5**, 3–45.
- Markwick PJ, Valdes PJ. 2004 Palaeo-digital elevation models for use as boundary conditions in coupled ocean–atmosphere GCM experiments: a Maastrichtian (late Cretaceous) example. *Palaeogeogr. Palaeoclimatol. Palaeoecol.* **213**, 37–63. (doi:10.1016/j.palaeo.2004.06.015)
- Alroy J. 2010 Geographical, environmental and intrinsic biotic controls on Phanerozoic marine diversification. *Palaeontology* **53**, 1211–1235. (doi:10.1111/j.1475-4983.2010.01011.x)
- Pinheiro J, Bates D, DebRoy S, Sarkar D, R Core Team. 2015 nlme: linear and nonlinear mixed effects models. R package version 3.1-121. See <http://cran.r-project.org/package=nlme>.
- R Core Team. 2015 *R: a language and environment for statistical computing*. Vienna, Austria: R Foundation for Statistical Computing.
- Butler RJ, Brusatte SL, Andres B, Benson RBJ. 2012 How do geological sampling biases affect studies of morphological evolution in deep time? A case study of pterosaur (Reptilia: Archosauria) disparity. *Evolution* **66**, 147–162. (doi:10.1111/j.1558-5646.2011.01415.x)
- Akaike H. 1974 A new look at the statistical model identification. *IEEE Trans. Automat. Contr.* **19**, 716–723. (doi:10.1109/TAC.1974.1100705)
- Burnham KP, Anderson DR. 2002 *Model selection and multimodel inference: a practical information-theoretic approach*, 2nd edn. Berlin, Germany: Springer.
- Mazerolle MJ. 2015 AICcmodavg: model selection and multimodel inference based on (Q)AIC(c). R package version 2.0-3. See <https://cran.r-project.org/web/packages/AICcmodavg/AICcmodavg.pdf>.

28. Nagelkerke NJD. 1991 A note on a general definition of the coefficient of determination. *Biometrika* **78**, 691–692. (doi:10.1093/biomet/78.3.691)
29. Alroy J. 2016 Online paleogeographic map generator. See <http://fossilworks.org/cgi-bin/bridge.pl?action=mapForm>.
30. Ihlow F, Dambach J, Engler JO, Flecks M, Hartmann T, Nekum S, Rajaei H, Rödder D. 2012 On the brink of extinction? How climate change may affect global chelonian species richness and distribution. *Glob. Change Biol.* **18**, 1520–1530. (doi:10.1111/j.1365-2486.2011.02623.x)
31. Brinkman DB. 2003 A review of nonmarine turtles from the Late Cretaceous of Alberta. *Can. J. Earth Sci.* **40**, 557–571. (doi:10.1139/e02-080)
32. Holroyd PA, Wilson GP, Hutchison JH. 2014 Temporal changes within the latest Cretaceous and early Paleogene turtle faunas of northeastern Montana. *Geol. Soc. Am. Spec. Pap.* **503**, 299–312. (doi:10.1130/2014.2503(11))
33. Waterson AM, Schmidt DN, Valdes PJ, Holroyd PA, Nicholson DB, Farnsworth A, Barrett PM. 2016 Modelling the climatic niche of turtles: a deep-time perspective. *Proc. R. Soc. B* **283**, 1839. (doi:10.1098/rspb.2016.1408)
34. Sellwood BW, Valdes PJ. 2006 Mesozoic climates: general circulation models and the rock record. *Sedimentary Geol.* **190**, 269–287. (doi:10.1016/j.sedgeo.2006.05.013)
35. Holroyd PA, Hutchison JH. 2002 Patterns of geographic variation in latest Cretaceous vertebrates: evidence from the turtle component. *Geol. Soc. Am. Spec. Pap.* **361**, 177–190. (doi:10.1130/0-8137-2361-2)
36. Downing JA *et al.* 2006 The global abundance and size distribution of lakes, ponds, and impoundments. *Limnol. Oceanogr.* **51**, 2388–2397. (doi:10.4319/lo.2006.51.5.2388)
37. Buhlmann KA, Akre TSB, Iverson JB, Karapatakis D, Mittermeier RA, Georges A, Rhodin AGJ, van Dijk PP, Gibbons JW. 2009 A global analysis of tortoise and freshwater turtle distributions with identification of priority conservation areas. *Chelonian Conserv. Biol.* **8**, 116–149. (doi:10.2744/CCB-0774.1)
38. Abell R, Thieme M, Ricketts TH, Olwero N, Ng R, Petry P, Dinerstein E, Revenga C, Hoekstra J. 2011 Concordance of freshwater and terrestrial biodiversity. *Conserv. Lett.* **4**, 127–136. (doi:10.1111/j.1755-263X.2010.00153.x)
39. Sertich JJW, Groenke JR. 2010 Appendicular skeleton of *Simosuchus clarki* (Crocodyliformes: Notosuchia) from the Late Cretaceous of Madagascar. *Mem. Soc. Vertebr. Paleontol.* **10**, 122–153. (doi:10.1080/02724634.2010.532674)
40. Parrish JM. 1987 The origin of crocodylian locomotion. *Paleobiology* **13**, 396–414. (doi:10.1017/S0094837300009003)
41. Markwick PJ. 2007 The palaeogeographic and palaeoclimatic significance of climate proxies for data-model comparisons. In *Deep-time perspectives of climate change: marrying the signal from computer models and biological proxies* (eds M Williams, AM Haywood, FJ Gregory, DN Schmidt), pp. 251–312. Micropaleontological Society Special Publication. London, UK: The Geological Society.
42. Benton MJ, Dunhill AM, Lloyd GT, Marx FG. 2011 Assessing the quality of the fossil record: insights from vertebrates. *Geol. Soc. Lond. Spec. Publ.* **358**, 63–94. (doi:10.1144/SP358.6)
43. Willig MR, Kaufman DM, Stevens RD. 2003 Latitudinal gradients of biodiversity: pattern, process, scale, and synthesis. *Annu. Rev. Ecol. Evol. Syst.* **34**, 273–309. (doi:10.1146/annurev.ecolsys.34.012103.144032)
44. Wetzel RG. 2001 *Limnology: lake and river ecosystems*, 3rd edn. New York, NY: Elsevier Academic Press.
45. Pearson RG, Boyero L. 2009 Are tropical streams really different? *J. North Am. Benthol. Soc.* **28**, 397–403. (doi:10.1899/08)
46. Boyero L *et al.* 2011 Global distribution of a key trophic guild contrasts with common latitudinal diversity patterns. *Ecology* **92**, 1839–1848. (doi:10.1890/10-2244.1)
47. Pyron RA, Burbrink FT. 2009 Can the tropical conservatism hypothesis explain temperate species richness patterns? An inverse latitudinal biodiversity gradient in the New World snake tribe Lamproleptini. *Glob. Ecol. Biogeogr.* **18**, 406–415. (doi:10.1111/j.1466-8238.2009.00462.x)
48. Wiens JJ, Sukumaran J, Pyron RA, Brown RM. 2009 Evolutionary and biogeographic origins of high tropical diversity in Old World frogs (Ranidae). *Evolution* **63**, 1217–1231. (doi:10.1111/j.1558-5646.2009.00610.x)
49. Buckley LB *et al.* 2010 Phylogeny, niche conservatism and the latitudinal diversity gradient in mammals. *Proc. R. Soc. B* **277**, 2131–2138. (doi:10.1098/rspb.2010.0179)
50. Giehl ELH, Jarenkow JA. 2012 Niche conservatism and the differences in species richness at the transition of tropical and subtropical climates in South America. *Ecography* **35**, 933–943. (doi:10.1111/j.1600-0587.2011.07430.x)
51. Romdal TS, Araújo MB, Rahbek C. 2013 Life on a tropical planet: niche conservatism and the global diversity gradient. *Glob. Ecol. Biogeogr.* **22**, 344–350. (doi:10.1111/j.1466-8238.2012.00786.x)