



THE UNIVERSITY *of* EDINBURGH

Edinburgh Research Explorer

Genomic Prediction of Resistance to Pasteurellosis in Gilthead Sea Bream (*Sparus aurata*) Using 2b-RAD Sequencing

Citation for published version:

Palaikostas, C, Ferrareso, S, Franch, R, Houston, RD & Bargelloni, L 2016, 'Genomic Prediction of Resistance to Pasteurellosis in Gilthead Sea Bream (*Sparus aurata*) Using 2b-RAD Sequencing' G3, vol. 6, no. 11, pp. 3693-3700. DOI: 10.1534/g3.116.035220

Digital Object Identifier (DOI):

[10.1534/g3.116.035220](https://doi.org/10.1534/g3.116.035220)

Link:

[Link to publication record in Edinburgh Research Explorer](#)

Document Version:

Publisher's PDF, also known as Version of record

Published In:

G3

Publisher Rights Statement:

Copyright © 2016 Author et al.

This is an open-access article distributed under the terms of the Creative Commons Attribution 4.0 International License (<http://creativecommons.org/licenses/by/4.0/>), which permits unrestricted use, distribution, and reproduction in any medium, provided the original work is properly cited.

General rights

Copyright for the publications made accessible via the Edinburgh Research Explorer is retained by the author(s) and / or other copyright owners and it is a condition of accessing these publications that users recognise and abide by the legal requirements associated with these rights.

Take down policy

The University of Edinburgh has made every reasonable effort to ensure that Edinburgh Research Explorer content complies with UK legislation. If you believe that the public display of this file breaches copyright please contact openaccess@ed.ac.uk providing details, and we will remove access to the work immediately and investigate your claim.



Genomic prediction of resistance to pasteurellosis in gilthead sea bream (*Sparus aurata*) using 2b-RAD sequencing

Christos Palaiokostas^{†*}, Serena Ferrareso^{†*}, Rafaella Franch[‡], Ross D. Houston[†] and Luca Bargelloni^{‡,1}

[†]The Roslin Institute and Royal (Dick) School of Veterinary Studies, University of Edinburgh, Easter Bush, Midlothian, EH25 9RG, Scotland, United Kingdom,

[‡]Department of Comparative Biomedicine and Food Science, University of Padova, viale dell'Università 16, 35020 Legnaro, Italy, *Equal contribution

ABSTRACT Gilthead sea bream (*Sparus aurata*) is a species of paramount importance to the Mediterranean aquaculture industry, with an annual production exceeding 140,000 metric tonnes. Pasteurellosis due to the Gram-negative bacterium *Photobacterium damsela* subsp. *piscicida* (Phdp) causes significant mortality, especially during larval and juvenile stages, and poses a serious threat to bream production. Selective breeding for improved resistance to pasteurellosis is a promising avenue for disease control, and the use of genetic markers to predict breeding values can improve the accuracy of selection, and allow accurate calculation of estimated breeding values (EBV) of non-challenged animals. In the current study, a population of 825 sea bream juveniles, originating from a factorial cross between 67 broodfish (32 sires; 35 dams), were challenged by 30 min immersion with 1×10^5 CFU virulent Phdp. Mortalities and survivors were recorded and sampled for genotyping by sequencing. The 2b-RAD sequencing approach was used to generate genome-wide SNP genotypes for all samples. A high-density linkage map containing 12,085 SNPs grouped into 24 linkage groups (consistent with the karyotype) was constructed. The heritability of surviving days (censored data) was 0.22 (95% highest density interval: 0.11-0.36) and 0.28 (95% highest density interval: 0.17-0.4) using the pedigree and the genomic relationship matrix respectively. A genome wide association study did not reveal individual SNPs significantly associated with resistance at a genome wide significance level. Genomic prediction approaches were tested to investigate the potential of the SNPs obtained by 2bRAD for estimating breeding values for resistance. The accuracy of the genomic prediction models ($r = 0.38 - 0.46$) outperformed the traditional BLUP approach based on pedigree records ($r = 0.30$). Overall results suggest that major quantitative trait loci (QTL) affecting resistance to pasteurellosis were not present in this population, but highlight the effectiveness of 2b-RAD genotyping by sequencing for genomic selection in a mass spawning fish species.

KEYWORDS

2b-RAD
Aquaculture
Breeding
High-Throughput sequencing

INTRODUCTION

Infectious diseases are a major threat to the profitability, sustainability and welfare status of farmed fish production (Yáñez *et al.*

2014). Gilthead sea bream (*Sparus aurata*) is one of the most important farmed fish in Mediterranean countries, with an annual production of approximately 146,000 metric tonnes (FEAP <http://www.feap.info/default.asp?SHORTCUT=582>). Pasteurellosis due to *Photobacterium damsela* subsp. *piscicida* is one of the primary disease problems faced by the sea bream aquaculture industry. High levels of mortality (90 – 100 %) are frequently observed, especially in periods where water temperature rise above 18°C, with larvae and juveniles being most susceptible (Noya *et al.* 1995;

Copyright © 2016 C. Palaiokostas *et al.* *et al.*

Manuscript compiled: Sunday 18th September, 2016%

¹ Department of Comparative Biomedicine and Food Science, University of Padova, viale dell'Università 16, 35020 Legnaro, Italy. Email: luca.bargelloni@unipd.it

Magarinos *et al.* 2001). Selection for improved genetic resistance in aquaculture breeding schemes is a valuable tool to help prevent or reduce disease outbreaks, especially where effective therapeutic agents or vaccines are lacking (Bishop and Woolliams 2014). Moderate to high heritabilities have been estimated for resistance to many common diseases, indicating that rapid genetic progress can be made through selective breeding (Odegård *et al.* 2011). In addition, recent technological advances in genome-wide sequencing and genotyping technology offer the potential of deriving more accurate estimated breeding values for individual selection candidates, as compared to the classical breeding approach where breeding values are typically estimated at a family level (Goddard and Hayes 2009). The application of genomic data to breeding is particularly valuable for disease resistance, which is typically expensive or impossible to measure on the selection candidates themselves. While marker-assisted selection for major disease resistance loci has been well documented in Atlantic salmon (*Salmo salar*) breeding programmes (Houston *et al.* 2008, 2010; Moen *et al.* 2009), few successful examples exist for other farmed finfish species. Genomic prediction uses genome-wide markers to estimate breeding values, and can deliver significant improvements in selection accuracy compared to traditional pedigree-based approaches, even for traits with a polygenic architecture (Odegård *et al.* 2014; Tsai *et al.* 2015, 2016; Vallejo *et al.* 2016).

Previous studies into the genetic resistance to pasteurellosis in sea bream have detected resistance QTL using microsatellite markers (Antonello *et al.* 2009; Massault *et al.* 2010). However, these studies were restricted by the low resolution of microsatellite markers, as compared to the high density SNP genotypes offered by SNP arrays (Houston *et al.* 2014) or genotyping by sequencing approaches (Davey *et al.* 2011). Restriction-site associated DNA (RAD) sequencing is a reduced representation high-throughput sequencing technique for the concurrent detection and genotyping of SNP markers in multiplexed samples with a unique nucleotide barcode (Baird *et al.* 2008). RAD sequencing and similar genotyping by sequencing techniques rely on digestion of the genomic DNA with a restriction enzyme, and subsequent high-depth sequencing of the flanking regions. These techniques have been applied in several studies of aquaculture species to generate high-density linkage maps (Gonen *et al.* 2014; Palaiokostas *et al.* 2013b,a, 2015a,b) and perform genome wide association studies (GWAS) in a cost-efficient manner (Campbell *et al.* 2014). A flexible and easily-streamlined variation of RAD sequencing named 2b-RAD sequencing utilises type IIB restriction enzymes to cleave genomic DNA upstream and downstream of the target site (Wang *et al.* 2012). In theory, 2b-RAD samples all the endonuclease recognition sites for sequencing, circumventing potential biases that may result from the size selection step in the original RAD protocol (Puritz *et al.* 2014). 2b-RAD data have also been applied for genetics studies in aquaculture species, for example to test genomic prediction in a limited number of Yesso scallop (*Patinopecten yessoensis*) families (Dou *et al.* 2016).

In this study, we used 2b-RAD sequencing to identify and genotype genome-wide SNPs in juvenile sea bream challenged with virulent Phdp bacteria, and recorded for survival time. A high-density SNP linkage map was constructed and a GWAS was performed to test the association between individual loci and resistance to pasteurellosis. Finally, genomic prediction of resistance was tested using several genomic selection models and marker densities to evaluate its potential in selection for improved resistance to pasteurellosis in sea bream.

MATERIALS AND METHODS

Sample collection and preparation

The experimental population used in the present experiment was part of a larger group of juvenile sea bream that were subjected to an experimental challenge with Phdp to estimate heritability of disease resistance as reported (Antonello *et al.* 2009). Fish were provided by the fish farm Valle Ca' Zuliani (Monfalcone, Italy). All broodstock fish were originally sampled from wild populations. Fertilized eggs were collected on the same day (year 2006) from natural mass spawning events occurring in four different broodstock tanks, therefore all fish had approximately the same age. Each broodstock tank contained 50-60 fish with a sex ratio 3:1 females:males. Approximately 10,000 eggs were collected, pooled, and kept in a separate tank without any size sorting until 110 days old. All fish were then transferred to the Istituto Zooprofilattico Sperimentale delle Venezie (Legnaro, Italy) for the experimental challenge. Fish were divided into two aerated tanks (A and B) each with 800 l of re-circulating seawater (salinity 35 ppt). Water temperature was maintained at 19°C. After 1 week of acclimation, fish were experimentally infected with a highly virulent strain of Phdp (strain 249/ittio99) as described in Antonello *et al.* (2009). Mortality was monitored daily for 19 days (Table S1). Mortality levels were nearly identical for both tanks, and only fish from tank A were included in the current study. Fish used in the challenge originated from 67 broodfish (32 sires; 35 dams). As already described (Antonello *et al.* 2009; Massault *et al.* 2010), parentage analysis was carried out using a panel of nine microsatellite loci (Table S2).

2b-RAD library preparation and sequencing

A total of 892 2b-RAD libraries (67 parents and 825 juveniles) were constructed by following the protocol reported by Wang *et al.* 2012 with some modifications (Pecoraro *et al.* 2016). Template DNA for each individual (500 ng) was digested in 6 µl reaction volume using 1 U *AlfI* at 37°C for 1 h followed by enzyme heat inactivation at 65°C for 20 min. The ligation reaction was performed by combining 5 µl of digested DNA with 20 µl of a ligation master mix containing 0.4 µM each of two library-specific adaptors (with fully degenerate cohesive ends 5'-NN-3') 0.2 mM ATP (NEB) and 1000 U T4 DNA ligase (CABRU, Arcore, Italy). Ligation was carried out at 16°C for 3 h with subsequent heat inactivation for 10 min at 65°C.

Sample-specific barcodes were designed through a Barcode generator program (http://comailab.genomecenter.ucdavis.edu/index.php/Barcode_generator). 50 µl PCR reactions were prepared containing 12 µl of ligated DNA product, 0.2 µl M of each primer, 0.3 mM dNTP, 5X Phusion HF buffer and 2 U Phusion high-fidelity DNA polymerase (NEB). Each library was PCR amplified using the following conditions: 13 cycles of 95°C for 5 s, 60°C for 20 s and 72°C for 5 s.

Adaptor and primer sequences were those reported in Wang *et al.* (2012). PCR products were purified using the SPRIselect purification kit (Beckman Coulter, Pasadena, CA, USA) and quantified through a Qubit 2.0 Fluorometer (Invitrogen). The quality of all amplicon libraries was checked at 1.8% agarose gel. Additionally, the quality of 10% of randomly-selected libraries, was also assessed by running them on an Agilent 2100 Bioanalyzer.

Individual libraries were pooled into equimolar amounts by adopting two different multiplexing strategies for parents (24 libraries / pool) and offspring (48 libraries / pool). The quality of each pool was verified on Agilent 2100 Bioanalyzer. Finally, pooled libraries were sequenced on an Illumina HiSeq2500 platform (Illumina, San Diego, CA, USA) using 50 base single-end sequencing

■ **Table 1 Gilthead sea bream linkage map**

LG	No. markers	Length (cM)
1	607	202
2	602	192
3	558	183
4	560	206
5	554	182
6	536	167
7	530	159
8	522	171
9	521	138
10	518	197
11	508	147
12	499	142
13	500	200
14	489	156
15	485	162
16	484	121
17	480	163
18	470	164
19	471	154
20	461	157
21	455	134
22	454	130
23	452	157
24	366	115
Total	12,089	3,899

(v3 chemistry).

Genotyping RAD alleles

Quality and adapters trimming of sequenced reads were performed by running a customized script (Pauletto *et al.* 2016; Pecoraro *et al.* 2016), obtaining 34-bp long fragments. SNP calling was performed using STACKS v1.23 (Catchen *et al.* 2011).

For each family/cross, individual genotypes were constructed using components of the STACKS pipeline as follows: i) for each individual, *ustacks* program was employed for building loci from all QC passed reads using the following parameters $-m10 - M2 - N3$ for parents and $-m5 - M2 - N3$ for offspring, ii) a catalog of loci unique for all families/crosses was constructed by using all parents' reads on *cstacks* program, then iii) each set of parents / offspring per cross was matched separately against such a catalogue (*sstacks* program) followed by genotype assignment by setting the following parameters on *genotypes* program: $-c - -min_hom_seqs\ 7 - -max_het_seqs\ 0.05$.

Unique tags created by STACKS were mapped against a draft assembly of *Sparus aurata* genome (L. Bargelloni, personal com-

munication). Mapping analysis was carried out by means of CLC Genomic Workbench 7.5 with stringent criteria (length fraction = 0.9; similarity fraction = 0.9; nonspecific match handling= ignore).

Linkage map construction

Linkage map construction was performed using Lep-Map v2 (Rastas *et al.* 2013). Quality control was performed for each full sibling family by excluding SNPs with minor allele frequency below 0.05 and those deviating from expected Mendelian segregation ($P < 0.001$). Linkage groups were formed using a minimum LOD threshold value of 8 in the 'SeparateChromosomes' module, allowing a maximum distance between consecutive SNPs of 50 cM. Marker order within each linkage group was performed using the 'OrderMarkers' module, where the likelihood of marker order is computed by using a hidden Markov model (Rastas *et al.* 2013). Map distances were calculated in centiMorgans (cM) using the Kosambi mapping function.

Trait definition and heritability estimation

Heritability of surviving days was estimated with the R/BGLR software (Pérez and de Los Campos 2014) using both the pedigree-based and the genomic relationship matrix. The animal model was applied:

$$y = \mu + Zu + e,$$

where y vector of recorded phenotypes (days to death; animals surviving at the end of the experiment treated as missing values sampled from corresponding truncated normal distribution with the resulting values being higher or equal to 20), μ vector of the intercept, Z incidence matrix relating phenotypes with the random animal effects, u is the vector of animal effects $N(0, A\sigma_g^2)$ with either A corresponding to the pedigree-based relationship matrix or G the corresponding genomic relationship matrix, and σ_g^2 the additive genetic variance. Finally, e is a vector of residuals. The G matrix was estimated according to VanRaden (2008) using the kin function of the R/synbreed package (Wimmer *et al.* 2012) (File S1). The additive genetic variance was estimated by applying Markov Chain Monte Carlo (MCMC) using a prior following the inverse-scaled χ^2 distribution (df=5), using 10M iterations out of which the first 10% were discarded, and values were stored every 1,000 iterations thereafter. Convergence of the resulting posterior distribution was assessed both visually (inspecting the resulting MCMC plots) and analytically with the Geweke diagnostic using R/boa v1.1.7 (Smith 2007). Heritability for the number of surviving days was estimated using the following formula:

$$h^2 = \frac{\sigma_g^2}{\sigma_g^2 + \sigma_e^2}$$

where σ_g^2 the estimated additive genetic variance and σ_e^2 the residual variance.

Genome wide association analysis (GWAS)

To test the association between individual SNPs and resistance to pasteurellosis (measured as surviving days), a GWAS was performed using R/rrBLUP (Endelman 2011). The mixed model applied (Yu *et al.* 2006) had the following format:

$$y = X\alpha + Zu + e$$

where y is the vector of the phenotypes (surviving days or overall survival), α is the vector of unknown marker effects, u is the vector of animal random effects $N(0, G\sigma_g^2)$ and e is the vector of residuals. The matrix G represents the genomic relationship matrix as described above, and σ_g^2 the additive genetic variance estimated using REML. X and Z are incidence matrices relating y to α and u , respectively. According to the above model additive SNP effects are treated as fixed effects, with the inclusion of the random animal effect to decrease spurious associations due to (genomic) relationships between the animals (Yu *et al.* 2006). The genome-wide significance threshold for the estimated additive SNP effects was calculated using a Bonferroni correction (0.05 / N), where N represents the number of QC-filtered SNPs across the entire genome.

Genomic Prediction

A genomic prediction approach was conducted to quantify the accuracy of the breeding values estimated using the SNP markers to predict the phenotypic trait values (surviving days). SNPs with > 15% missing genotypes were removed in order to minimize impact of imputed genotypes, since used software cannot handle missing genotypes. Missing values of the remaining SNPs were imputed using R/synbreed (Wimmer *et al.* 2012). Genomic breeding values were estimated using rrBLUP, BayesA, BayesB (Meuwissen *et al.* 2001) and BayesC (Habier *et al.* 2011) models using the R/BGLR

(Pérez and de Los Campos 2014) software. The above models differ in regard to the prior distribution of the marker effects. Briefly, rrBLUP by using the Gaussian distribution, induces homogenous shrinkage across markers, while in BayesA the usage of a scaled-t distribution induces marker size effect shrinkage allowing for variable marker effect sizes. Models BayesB and BayesC also perform variable selection, with the difference between the two being the usage of a scaled-t or a Gaussian prior density respectively (Meuwissen *et al.* 2001; de los Campos *et al.* 2013). To compare the accuracy of genomic EBVs to the pedigree-based EBVs, pedigree-based BLUP (PBLUP) (Henderson 1975) was applied to calculate breeding values using the same software. The general form of the fitted models was the following:

$$y = \eta + \epsilon,$$

The linear predictor η in the case of rrBLUP, BayesA, BayesB and BayesC had the following general form:

$$\eta = 1\mu + X_1\beta_1,$$

where μ is the intercept, X_1 the design matrix relating the phenotypes to the markers, β_1 is the vector of marker effects with corresponding priors depending on the model used. Marker coding followed the format where the heterozygotes were coded as 1 and the two alternate homozygotes as 0 and 2. The linear predictor η in the case of pedigree BLUP had the following form:

$$\eta = 1\mu + u,$$

where u is the animal random effect vector $N(0, A\sigma_g^2)$ with the matrix A representing the pedigree estimated relationship matrix. The parameters of the above models were estimated through MCMC (110,000 iterations; burn-in: 10,000; thin: 100).

Assessment of the accuracy of breeding value predictions was conducted according to the following procedure. The data set was randomly split into a training set ($n = 578$ animals) and a validation set ($n = 200$). The above was repeated 100 times with the obtained prediction accuracies being adjusted for the trait heritability for each tested model. The genomic estimated breeding values (GEBV) for each replicate of the validation data set were estimated as:

$$GEBV = Xu,$$

where X the incidence matrix relating GEBV with SNP genotypes and u the vector of estimated SNP effects from the corresponding training data set. The accuracy of the estimated GEBV was approximated as:

$$r = (GEBV, y) / h,$$

where y the vector of recorded phenotypes and h the square root of the heritability. In all tested scenarios the heritability estimated using the genomic relationship matrix was used. Reported accuracies for each tested model refer to the mean accuracy of the above-mentioned 100 replicates of validation data sets. In order to test the predictive ability of varying SNP densities, the above procedure was followed using (i) SNPs spaced > 1 cM apart (2,614 SNPs) or (ii) SNPs spaced > 5 cM apart (705 SNPs) on the linkage map.

Data Availability

Raw reads were deposited in EBI repository under project ID SRP081498. Table S1 contains the phenotypic data. Table S2 contains the pedigree. Table S3 and S4 contain summary of obtained reads for parental and offspring samples respectively. Table S5 contains the location of the linkage map SNPs. Table S6 contains the genotypic data. File S1 contains customized R script used for genomic prediction.

RESULTS

Disease challenge

The challenged population consisted of 75 full sibling families with a mean family size of 10, originating from a factorial cross between 67 broodfish (32 sires; 35 dams). The largest full-sib family consisted of 114 animals, while the smallest had only 2 animals (3 full-sib families). The overall survival at the end of the pasteurellosis challenge was 4.7%. Observed mortality levels showed three distinct peaks on day 7 (10.4 % loss), day 11 (14 % loss) and day 15 (5.7 % loss) followed by a steady reduction in daily mortality rate (Figure 1).

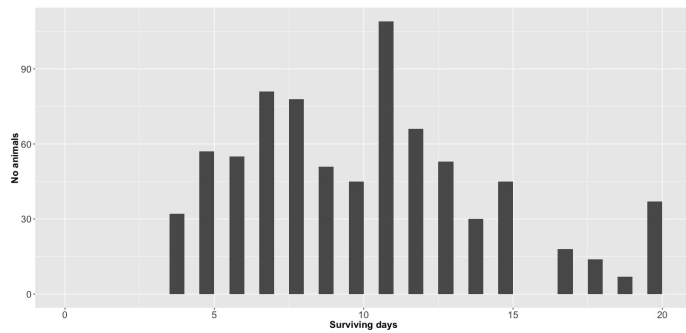


Figure 1 . Distribution of surviving days across disease challenge. Frequency of mortalities per day during 19 days of challenge. Survivors were assigned a value of 20.

Genotyping RAD alleles

The mean number of raw reads was 8.76 million (M) and 4.51 M while the number of reads passing QC was 7.74 M (88 %) and 3.69 M (81 %) for parents (Table S3) and offspring (Table S4), respectively. The STACKS catalogue consisted of 202,598 unique 2b-RAD loci, of which 73,876 contained at least one SNP in the parents (EBI repository SRP081498). To confirm the identity of loci created by STACKS, the 202,598 tags of the catalog were mapped against a *Sparus aurata* draft reference genome assembly (unpublished data). A high percentage of 2b-RAD loci were successfully mapped, with 93.5 % of tags showing a unique match to the reference genome. In order to maximise the number of informative SNPs and minimise the amount of missing or erroneous data, RAD-tags that were retrieved in at least 75% of the samples, and that carried only one or two SNPs were retained. 48 animals with missing data > 30% were excluded from subsequent analysis. A total of 21,974 putative SNPs were finally used for construction of the genetic map from 777 disease challenged offspring (genotypic missing data < 30%) and their corresponding 67 parents.

Linkage Map

The linkage map consisted of 12,085 SNPs that were grouped into 24 linkage groups, in accordance with gilthead sea bream karyotype, with a total map length of 3,899 cM (Table 1, Figure 2; Table S5). The remaining SNPs (9,889) either failed to pass QC filters, or were not placed on the resulting linkage groups during mapping, and these were discarded. The female and male maps were comparable with total lengths of 3,822 cM and 4,010 cM respectively. The number of SNPs per chromosome ranged between 366 to 607 (mean = 503; s.d = 53), while linkage group length ranged between 115 and 202 cM (mean = 162; s.d = 26). The correlation between number of SNPs and corresponding chromosome map length was 0.74 (n = 24 linkage groups).

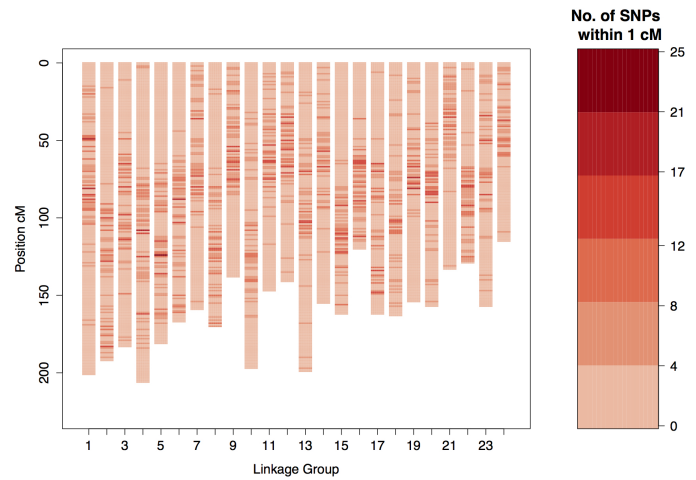


Figure 2 The Gilthead sea bream linkage map. The heatmap on the right side provides scale of colour coding for the size of SNP clusters.

Heritability estimation and Genome wide association analysis (GWAS)

The heritability of surviving days (censored data) was 0.22 (95% highest density interval: 0.11-0.36) and 0.28 (95% highest density interval: 0.17-0.4) using the pedigree and the genomic relationship matrix respectively of the 777 disease challenged offspring. No SNPs surpassed the Bonferroni-corrected genome-wide significance threshold ($P = 4.1 \times 10^{-6}$; $\alpha = 0.05$; Table S6). The SNPs with the lowest p-values ($P < 10^{-3}$) were located in linkage groups 1 - 3, 10, 17, 20 and 21 (Figure 3).

Genomic Prediction

Genomic prediction was tested as a means of obtaining breeding values, and compared to prediction using a pedigree-based approach (File S1). The prediction was conducted using genotype information from 11,239 SNP markers (passed QC filters set for genomic prediction) for the 777 disease challenged animals that were randomly split in training (n=578) and validation (n=200) datasets. The application of all the genomic prediction models resulted in higher accuracies than those achieved using pedigree-based BLUP (Table 2). Prediction accuracy with PBLUP was 0.3, and versus 0.38 to 0.46 for the genomic prediction models, with highest accuracy being observed using the BayesA method. Prediction accuracy dropped when more sparse SNP marker datasets were used with the last scenario (utilizing SNPs > 5cM apart) giving similar accuracies with the ones obtained by using the pedigree-based BLUP. In the scenario of utilizing only SNPs located more than 1 cM apart on the linkage map (2,614 SNPs) accuracies ranged between 0.3 and 0.36, with the highest accuracy obtained using rrBLUP. For the dataset utilizing only SNPs located more than 5 cM apart (705 SNPs) accuracies ranged between 0.29 - 0.31 with highest accuracies obtained using rrBLUP and BayesA.

DISCUSSION

Gilthead sea bream (*Sparus aurata*) is a farmed species of paramount importance for Mediterranean aquaculture. While vaccines can offer some protection against pasteurellosis, the low immune competence observed in larval and juvenile stages renders this protection only temporary (Antonello *et al.* 2009). Breeding for

■ **Table 2 Genomic prediction accuracies for surviving days**

Model	Accuracy ^a	Accuracy SNPs 1cM apart ^b	Accuracy SNPs 5cM apart ^c
pBLUP	0.3 (se)	-	-
rrBLUP	0.44 (se ^d ± 0.04)	0.36 (se ± 0.03)	0.31 (se ± 0.04)
BayesA	0.46 (se ± 0.03)	0.35 (se ± 0.03)	0.31 (se ± 0.04)
BayesB	0.38 (se ± 0.03)	0.30 (se ± 0.04)	0.29 (se ± 0.03)
BayesC	0.44 (se ± 0.04)	0.35 (se ± 0.04)	0.29 (se ± 0.03)

^a Analysis included 12,085 SNPs

^b Analysis included 2,614 SNPs

^c Analysis included 705 SNPs

^d standard error

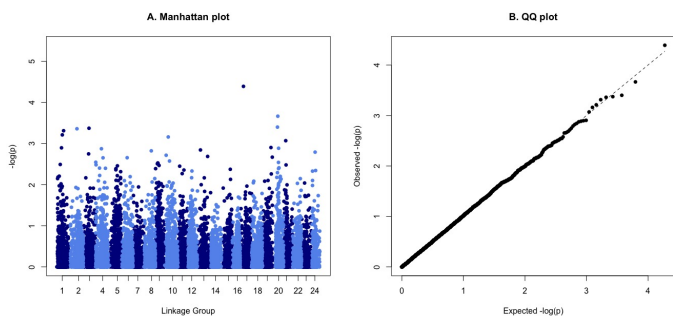


Figure 3 A Manhattan plot highlighting the association between individual SNPs and surviving days. (B). A QQ plot showing the relationship between the observed and expected $-\log(P)$ values from the GWAS.

improved genetic resistance offers an additional and complementary tool to combat losses due to this disease. While traditional family-based selective breeding is applied in sea bream, it cannot utilise within-family genetic variation in the trait. Applying genomic information into selective breeding schemes raises the possibility of selecting directly for favourable alleles at major QTL (marker-assisted selection) or incorporating all markers in the prediction of breeding values (genomic selection). As such, genomics-enabled breeding can expedite the rate of genetic gain, and can potentially reduce the need for yearly trait recording. However, to enable these benefits, substantial genomic resources are typically required (e.g. a high density SNP genotyping platform), which sea bream is currently lacking. This is likely to change in the near future as the reference genome sequence and associated genomic tools/data become available. In the meantime, RAD sequencing and similar techniques can readily be applied to generate genome-wide SNP marker datasets even in the absence of such genomic resources (Baird *et al.* 2008).

High-density SNP linkage maps have been constructed for several aquaculture species, and are useful for both QTL positioning and reference genome assembly (Gonen *et al.* 2014; Palaiokostas *et al.* 2013b,a, 2015b). The most recent linkage map of sea bream consists mainly of microsatellites (Tsigenopoulos *et al.* 2014), lacking the necessary resolution for successful implementation of GWAS and genomic prediction. In the current study, we present the first high-density linkage map for this species, consisting of 12,085 SNPs on 24 linkage groups, which is consistent with the karyotype. The genetic map presented here spans 3,899 cM, while

the previous map of (Tsigenopoulos *et al.* 2014) has a total length of 1769.7 cM, which may reflect the larger number of markers used in the current study. This trend of increase in map distance with increased marker density was observed with previous sea bass (*Dicentrarchus labrax*) linkage maps (Chistiakov *et al.* 2005, 2008; Palaiokostas *et al.* 2015b).

The estimated heritability of resistance was moderate (0.22 and 0.28 for the different models) compared to those previously reported for disease resistance traits in various aquaculture species (Odegård *et al.* 2011). Nonetheless, successful implementation even in the case of low heritability traits in breeding programs is still possible, as demonstrated in livestock (Heringstad *et al.* 2003). Also, since heritability of mortality traits are frequency dependent, with maximal values reported at intermediate mortality levels (Bishop and Woolliams 2014), the low survival rate in the current study may have resulted in an underestimate, and analysis of additional challenge and field data is merited.

The GWAS results pointed to a polygenic or oligogenic genetic architecture for resistance to pasteurellosis, with no genome-wide significant QTL identified, with the lowest P values indicative of putative suggestive QTL on linkage groups 1 - 3, 10, 17, 20 and 21. Unfortunately the lack of an integrated linkage map for sea bream does not allow direct comparison of the previously described resistance QTL (Massault *et al.* 2010) with the current study. Furthermore no major QTL were identified in the above study, with the largest QTL for surviving days explaining approximately 4 % of the phenotypic variance. The fact that genomic prediction using all tested models gave similar prediction accuracies, a phenomenon often observed in the study of polygenic traits (Meuwissen *et al.* 2001; Kizilkaya *et al.* 2010) seem to support the hypothesis of polygenic resistance. Nevertheless, since the selected priors will influence the output of the Bayesian models (Gianola 2013), interpretation of genetic architecture based on these results should be treated with caution. Additionally, the moderate sample size in the current study is likely to limit the statistical power to detect small to medium size effect QTL. Further, the low mortality level precludes effective estimation of genetic parameters for survival per se, and the genetic correlation between survival time (days to death) and overall survival is unknown.

The results from the genomic prediction approach were encouraging for practical implementation of selective breeding for genetic resistance in sea bream, with the genomic prediction models outperforming traditional BLUP. The advantage of the genomic-based models was retained also when only SNPs at 1cM location intervals were used, which may be useful for reducing genotyping costs and improving cost-effectiveness. However, due to the limited number

of families in the current study, the training and validation sets contain closely related animals, which will increase the accuracy of prediction. Additional testing of genomic prediction at varying marker densities on separate and preferably larger populations would be required to ascertain the appropriate density for commercial application of genomic selection. The benefit of genomic prediction over a pedigree-based approach is likely to be due to the ability to capture within-family genetic variation. In mass-spawning species such as sea bream, in which family size and structure is difficult to control, this approach is likely to be particularly advantageous. Overall, the current study demonstrates that SNP markers generated via 2b-RAD are effective at capturing the genetic variation in a complex trait in a sea bream breeding population. This approach is likely to be useful in other species with less-developed genomic tools, and provides further evidence that incorporation of genomic selection is likely to result in significant improvement in selection accuracy and genetic gain compared to traditional family selection in aquaculture breeding.

Conclusion

2b-RAD sequencing was applied to investigate genetic resistance to pasteurellosis in gilthead sea bream. The SNP data generated were applied to create the first high-density linkage map for sea bream. Only suggestive QTLs were detected, implying that resistance to pasteurellosis has an oligogenic-polygenic architecture for the studied population. Genomic prediction using the 2b-RAD genotype data was effective, with substantial improvement in prediction accuracy over the pedigree-based model. This highlights the utility of genotyping by sequencing for genomic prediction of disease resistance in aquaculture species, and its potential to apply genomic selection in commercial breeding programs.

ACKNOWLEDGEMENTS

This work is part of the project “Genomic technologies for the 21st century aquaculture industry: an integrated approach to improve fish growth and health (GenTechAqua)”, granted to L.B by the Fondazione Cassa di Risparmio Padova e Rovigo in the framework of the call “Progetti di Eccellenza 2009-2010”. CP and RH are supported by funding from the European Union’s Seventh Framework Programme (FP7 2007-2013) under grant agreement no. 613611 (FISHBOOST). RH is supported by the Bioscience and Biotechnology Research Council (BBSRC) funds BB/J004235/1 and BB/J004324/1.

AUTHOR CONTRIBUTIONS

SF and RF carried out DNA extractions, 2bRAD library preparation and sequence data processing. LB conceived the study, contributed to designing the experiments, analysing the data. CP and RH designed the quantitative genetic analyses. CP conducted the genetic analysis. All authors contributed to drafting the ms. *ibibliographyexample-bibliography*

LITERATURE CITED

Antonello, J., C. Massault, R. Franch, C. Haley, C. Pellizzari, G. Bovo, T. Patarnello, D. J. de Koning, and L. Bargelloni, 2009 Estimates of heritability and genetic correlation for body length and resistance to fish pasteurellosis in the gilthead sea bream (*Sparus aurata* L.). *Aquaculture* **298**: 29–35.

Baird, N. a., P. D. Etter, T. S. Atwood, M. C. Currey, A. L. Shiver, Z. a. Lewis, E. U. Selker, W. a. Cresko, and E. a. Johnson, 2008

Rapid SNP discovery and genetic mapping using sequenced RAD markers. *PLoS one* **3**: e3376.

Bishop, S. C. and J. A. Woolliams, 2014 Genomics and disease resistance studies in livestock. *Livestock science* **166**: 190–198.

Campbell, N. R., S. E. LaPatra, K. Overturf, R. Towner, and S. R. Narum, 2014 Association mapping of disease resistance traits in rainbow trout using restriction site associated DNA sequencing. *G3 (Bethesda, Md.)* **4**: 2473–81.

Catchen, J. M., A. Amores, P. Hohenlohe, W. Cresko, and J. H. Postlethwait, 2011 Stacks: building and genotyping Loci de novo from short-read sequences. *G3 (Bethesda, Md.)* **1**: 171–82.

Chistiakov, D. A., B. Hellemans, C. S. Haley, A. S. Law, C. S. Tsigenopoulos, G. Kotoulas, D. Bertotto, A. Libertini, and F. A. M. Volckaert, 2005 A microsatellite linkage map of the European sea bass *Dicentrarchus labrax* L. *Genetics* **170**: 1821–6.

Chistiakov, D. A., C. S. Tsigenopoulos, J. Lagnel, Y.-M. Guo, B. Hellemans, C. S. Haley, F. A. M. Volckaert, and G. Kotoulas, 2008 A combined AFLP and microsatellite linkage map and pilot comparative genomic analysis of European sea bass *Dicentrarchus labrax* L. *Animal genetics* **39**: 623–34.

Davey, J. W., P. a. Hohenlohe, P. D. Etter, J. Q. Boone, J. M. Catchen, and M. L. Blaxter, 2011 Genome-wide genetic marker discovery and genotyping using next-generation sequencing. *Nature reviews. Genetics* **12**: 499–510.

de los Campos, G., J. M. Hickey, R. Pong-Wong, H. D. Daetwyler, and M. P. L. Calus, 2013 Whole-genome regression and prediction methods applied to plant and animal breeding.

Dou, J., X. Li, Q. Fu, W. Jiao, Y. Li, T. Li, Y. Wang, X. Hu, S. Wang, and Z. Bao, 2016 Evaluation of the 2b-RAD method for genomic selection in scallop breeding. *Scientific reports* **6**: 19244.

Endelman, J. B., 2011 Ridge Regression and Other Kernels for Genomic Selection with R Package rrBLUP.

Gianola, D., 2013 Priors in whole-genome regression: The Bayesian alphabet returns. *Genetics* **194**: 573–596.

Goddard, M. E. and B. J. Hayes, 2009 Mapping genes for complex traits in domestic animals and their use in breeding programmes. *Nature reviews. Genetics* **10**: 381–391.

Gonen, S., N. R. Lowe, T. Cezard, K. Gharbi, S. C. Bishop, and R. D. Houston, 2014 Linkage maps of the Atlantic salmon (*Salmo salar*) genome derived from RAD sequencing. *BMC genomics* **15**: 166.

Habier, D., R. L. Fernando, K. Kizilkaya, and D. J. Garrick, 2011 Extension of the bayesian alphabet for genomic selection. *BMC bioinformatics* **12**: 186.

Henderson, C. R., 1975 Best linear unbiased estimation and prediction under a selection model. *Biometrics* **31**: 423–447.

Heringstad, B., G. Klemetsdal, and T. Steine, 2003 Selection responses for clinical mastitis and protein yield in two Norwegian dairy cattle selection experiments. *Journal of dairy science* **86**: 2990–2999.

Houston, R. D., C. S. Haley, A. Hamilton, D. R. Guy, J. C. Mota-Velasco, A. A. Gheyas, A. E. Tinch, J. B. Taggart, J. E. Bron, W. G. Starkey, B. J. McAndrew, D. W. Verner-Jeffreys, R. K. Paley, G. S. E. Rimmer, I. J. Tew, and S. C. Bishop, 2010 The susceptibility of Atlantic salmon fry to freshwater infectious pancreatic necrosis is largely explained by a major QTL. *Heredity* **105**: 318–327.

Houston, R. D., C. S. Haley, A. Hamilton, D. R. Guy, A. E. Tinch, J. B. Taggart, B. J. McAndrew, and S. C. Bishop, 2008 Major quantitative trait loci affect resistance to infectious pancreatic necrosis in Atlantic salmon (*Salmo salar*). *Genetics* **178**: 1109–15.

Houston, R. D., J. B. Taggart, T. Cézard, M. Bekaert, N. R. Lowe, A. Downing, R. Talbot, S. C. Bishop, A. L. Archibald, J. E. Bron,

- D. J. Penman, A. Davassi, F. Brew, A. E. Tinch, K. Gharbi, and A. Hamilton, 2014 Development and validation of a high density SNP genotyping array for Atlantic salmon (*Salmo salar*). *BMC genomics* **15**: 90.
- Kizilkaya, K., R. L. Fernando, and D. J. Garrick, 2010 Genomic prediction of simulated multibreed and purebred performance using observed fifty thousand single nucleotide polymorphism genotypes. *Journal of animal science* **88**: 544–51.
- Magarinos, B., N. Couso, M. Noya, P. Merino, and A. E. Toranzo, 2001 Effect of temperature on the development of pasteurellosis in carrier gilthead seabream *Sparus aurata* /. *Aquaculture* pp. 17–21.
- Massault, C., R. Franch, C. Haley, D. J. De Koning, H. Bovenhuis, C. Pellizzari, T. Patarnello, and L. Bargelloni, 2010 Quantitative trait loci for resistance to fish pasteurellosis in gilthead sea bream (*Sparus aurata*). *Animal genetics* pp. 191–203.
- Meuwissen, T. H. E., B. J. Hayes, and M. E. Goddard, 2001 Prediction of Total Genetic Value Using Genome-Wide Dense Marker Maps. *Genetics* **157**: 1819–1829.
- Moen, T., M. Baranski, A. K. Sonesson, and S. Kjø glum, 2009 Confirmation and fine-mapping of a major QTL for resistance to infectious pancreatic necrosis in Atlantic salmon (*Salmo salar*): population-level associations between markers and trait. *BMC genomics* **10**: 368.
- Noya, M., B. Magariños, and J. Lamas, 1995 Interactions between peritoneal exudate cells (PECs) of gilthead seabream (*Sparus aurata*) and *Pasteurella piscicida*. A morphological study. *Aquaculture* **131**: 11–21.
- Odegård, J. r., M. Baranski, B. Gjerde, and T. Gjedrem, 2011 Methodology for genetic evaluation of disease resistance in aquaculture species: Challenges and future prospects. *Aquaculture Research* **42**: 103–114.
- Odegård, J. r., T. Moen, N. Santi, S. A. Korsvoll, S. Kjø glum, and T. H. E. Meuwissen, 2014 Genomic prediction in an admixed population of Atlantic salmon (*Salmo salar*). *Frontiers in genetics* **5**: 402.
- Palaiokostas, C., M. Bekaert, A. Davie, M. E. Cowan, M. Oral, J. B. Taggart, K. Gharbi, B. J. McAndrew, D. J. Penman, and H. Migaud, 2013a Mapping the sex determination locus in the Atlantic halibut (*Hippoglossus hippoglossus*) using RAD sequencing. *BMC genomics* **14**: 566.
- Palaiokostas, C., M. Bekaert, M. G. Khan, J. B. Taggart, K. Gharbi, B. J. McAndrew, and D. J. Penman, 2015a A novel sex-determining QTL in Nile tilapia (*Oreochromis niloticus*). *BMC genomics* **16**: 1383.
- Palaiokostas, C., M. Bekaert, M. G. Q. Khan, J. B. Taggart, K. Gharbi, B. J. McAndrew, and D. J. Penman, 2013b Mapping and Validation of the Major Sex-Determining Region in Nile Tilapia (*Oreochromis niloticus* L.) Using RAD Sequencing. *PLoS ONE* **8**.
- Palaiokostas, C., M. Bekaert, J. B. Taggart, K. Gharbi, B. J. McAndrew, B. Chatain, D. J. Penman, and M. Vandeputte, 2015b A new SNP-based vision of the genetics of sex determination in European sea bass (*Dicentrarchus labrax*). *Genetics, selection, evolution : GSE* **47**: 68.
- Pauletto, M., L. Carraro, M. Babbucci, R. Lucchini, L. Bargelloni, and B. Cardazzo, 2016 Extending RAD tag analysis to microbial ecology: A comparison between MultiLocus Sequence Typing and 2b-RAD to investigate *Listeria monocytogenes* genetic structure. *Molecular Ecology Resources* **16**: 823–835.
- Pecoraro, C., M. Babbucci, A. Villamor, R. Franch, C. Papetti, B. Leroy, S. Ortega-Garcia, J. Muir, J. Rooker, F. Arocha, H. Murua, I. Zudaire, E. Chassot, N. Bodin, F. Tinti, L. Bargelloni, and A. Cariani, 2016 Methodological assessment of 2b-RAD genotyping technique for population structure inferences in yellowfin tuna (*Thunnus albacares*). *Marine Genomics* **25**: 43–48.
- Pérez, P. and G. de Los Campos, 2014 Genome-Wide Regression & Prediction with the BGLR Statistical Package. *Genetics* .
- Puritz, J. B., M. V. Matz, R. J. Toonen, J. N. Weber, D. I. Bolnick, and C. E. Bird, 2014 Demystifying the RAD fad. *Molecular ecology* **23**: 5937–42.
- Rastas, P., L. Paulin, I. Hanski, R. Lehtonen, and P. Auvinen, 2013 Lep-MAP: fast and accurate linkage map construction for large SNP datasets. *Bioinformatics (Oxford, England)* **29**: 3128–34.
- Smith, B. J., 2007 boa : An R Package for MCMC Output Convergence. *Journal of Statistical Software* **21**: 1–37.
- Tsai, H.-Y., A. Hamilton, A. E. Tinch, D. R. Guy, J. E. Bron, J. B. Taggart, K. Gharbi, M. Stear, O. Matika, R. Pong-Wong, S. C. Bishop, and R. D. Houston, 2016 Genomic prediction of host resistance to sea lice in farmed Atlantic salmon populations. *Genetics Selection Evolution* **48**: 47.
- Tsai, H.-Y., A. Hamilton, A. E. Tinch, D. R. Guy, K. Gharbi, M. J. Stear, O. Matika, S. C. Bishop, and R. D. Houston, 2015 Genome wide association and genomic prediction for growth traits in juvenile farmed Atlantic salmon using a high density SNP array. *BMC genomics* **16**: 969.
- Tsigenopoulos, C. S., B. Louro, D. Chatziplis, J. Lagnel, E. Vogiatzi, D. Loukovitis, R. Franch, E. Sarropoulou, D. M. Power, T. Patarnello, C. C. Mylonas, A. Magoulas, L. Bargelloni, A. Canario, and G. Kotoulas, 2014 Second generation genetic linkage map for the gilthead sea bream *Sparus aurata* L. *Marine genomics* **18**: 77–82.
- Vallejo, R. L., T. D. Leeds, B. O. Fragomeni, G. Gao, A. G. Hernandez, I. Misztal, T. J. Welch, G. D. Wiens, and Y. Palti, 2016 Evaluation of Genome-Enabled Selection for Bacterial Cold Water Disease Resistance Using Progeny Performance Data in Rainbow Trout: Insights on Genotyping Methods and Genomic Prediction Models. *Frontiers in Genetics* **7**: 96.
- Wang, S., E. Meyer, J. K. McKay, and M. V. Matz, 2012 2b-RAD: a simple and flexible method for genome-wide genotyping. *Nature Methods* **9**: 808–810.
- Wimmer, V., T. Albrecht, H.-J. Auinger, and C.-C. Schön, 2012 synbreed: a framework for the analysis of genomic prediction data using R. *Bioinformatics (Oxford, England)* **28**: 2086–7.
- Yáñez, J. M., R. D. Houston, and S. Newman, 2014 Genetics and genomics of disease resistance in salmonid species. *Frontiers in genetics* **5**: 415.
- Yu, J., G. Pressoir, W. H. Briggs, I. Vroh Bi, M. Yamasaki, J. F. Doebley, M. D. McMullen, B. S. Gaut, D. M. Nielsen, J. B. Holland, S. Kresovich, and E. S. Buckler, 2006 A unified mixed-model method for association mapping that accounts for multiple levels of relatedness. *Nature genetics* **38**: 203–208.