



THE UNIVERSITY *of* EDINBURGH

Edinburgh Research Explorer

Quality of Life in patients with Advanced Cancer – Differential association with performance status and the systemic inflammatory response

Citation for published version:

Laird, B, Fallon, M, Hjermstad, M, Harden, S, Kaasa, S, Klepstad, P & McMillan, D 2016, 'Quality of Life in patients with Advanced Cancer – Differential association with performance status and the systemic inflammatory response' *Journal of Clinical Oncology*, vol. 34, no. 23, pp. 2769-2775. DOI: 10.1200/JCO.2015.65.7742

Digital Object Identifier (DOI):

[10.1200/JCO.2015.65.7742](https://doi.org/10.1200/JCO.2015.65.7742)

Link:

[Link to publication record in Edinburgh Research Explorer](#)

Document Version:

Publisher's PDF, also known as Version of record

Published In:

Journal of Clinical Oncology

Publisher Rights Statement:

Deposit permitted by the publisher.

General rights

Copyright for the publications made accessible via the Edinburgh Research Explorer is retained by the author(s) and / or other copyright owners and it is a condition of accessing these publications that users recognise and abide by the legal requirements associated with these rights.

Take down policy

The University of Edinburgh has made every reasonable effort to ensure that Edinburgh Research Explorer content complies with UK legislation. If you believe that the public display of this file breaches copyright please contact openaccess@ed.ac.uk providing details, and we will remove access to the work immediately and investigate your claim.



Quality of Life in Patients With Advanced Cancer: Differential Association With Performance Status and Systemic Inflammatory Response

Barry J.A. Laird, Marie Fallon, Marianne J. Hjermsstad, Sharon Tuck, Stein Kaasa, Pål Klepstad, and Donald C. McMillan

Barry J.A. Laird, Marianne J. Hjermsstad, Stein Kaasa, and Pål Klepstad, Norwegian University of Science and Technology; Pål Klepstad, Trondheim University Hospital, Trondheim; Marianne J. Hjermsstad and Stein Kaasa, Oslo University Hospital, Oslo, Norway; Barry J.A. Laird, Marie Fallon, and Sharon Tuck, University of Edinburgh, Edinburgh; and Donald C. McMillan, University of Glasgow, Glasgow, United Kingdom.

Published online ahead of print at www.jco.org on June 27, 2016.

Supported by Contract No. 037777 from the Norwegian Research Council and the European Union's 6th Framework (biobank data collection).

Authors' disclosures of potential conflicts of interest are found in the article online at www.jco.org. Author contributions are found at the end of this article.

Corresponding author: Barry J.A. Laird, MD, Institute of Genetics and Molecular Medicine, University of Edinburgh, Western General Hospital, Edinburgh, EH4 2XR, United Kingdom; e-mail: barry.laird@ed.ac.uk.

© 2016 by American Society of Clinical Oncology

0732-183X/16/3423w-2769w/\$20.00

DOI: 10.1200/JCO.2015.65.7742

ABSTRACT

Purpose

Quality of life is a key component of cancer care; however, the factors that determine quality of life are not well understood. The aim of this study was to examine the relationship between quality of life parameters, performance status (PS), and the systemic inflammatory response in patients with advanced cancer.

Methods

An international biobank of patients with advanced cancer was analyzed. Quality of life was assessed at a single time point by using the European Organisation for Research and Treatment of Cancer Quality of Life Questionnaire C-30 (EORTC QLQ-C30). PS was assessed by using the Eastern Cooperative Oncology Group (ECOG) classification. Systemic inflammation was assessed by using the modified Glasgow Prognostic Score (mGPS), which combines C-reactive protein and albumin. The relationship between quality of life parameters, ECOG PS, and the mGPS was examined.

Results

Data were available for 2,520 patients, and the most common cancers were GI (585 patients [22.2%]) and pulmonary (443 patients [17.6%]). The median survival was 4.25 months (interquartile range, 1.36 to 12.9 months). Increasing mGPS (systemic inflammation) and deteriorating PS were associated with deterioration in quality-of-life parameters ($P < .001$). Increasing systemic inflammation was associated with deterioration in quality-of-life parameters independent of PS.

Conclusion

Systemic inflammation was associated with quality-of-life parameters independent of PS in patients with advanced cancer. Further investigation of these relationships in longitudinal studies and investigations of possible effects of attenuating systemic inflammation are now warranted.

J Clin Oncol 34:2769-2775. © 2016 by American Society of Clinical Oncology

INTRODUCTION

Clinical trials in oncology have changed in the past 30 years. The initial evaluation criteria for clinical trials focused on tumor size, time to progression, and survival. However, over the past three decades, there has been an evolution toward the inclusion of quality-of-life parameters, and these are now recognized as a key component in clinical trial evaluations.^{1,2} Indeed, the vast majority of clinical trials now report quality-of-life parameters as either primary or secondary end points, and trials that improve quality of life in patients with cancer are of increasing interest, particularly in patients with advanced cancer in

whom the scope for improving survival has proved to be limited.

One of the most common instruments used to assess quality of life is the European Organisation for the Research and Treatment of Cancer Quality of Life Questionnaire C30 (EORTC QLQ-C30),³ which has been used in more than 9,000 clinical trials.² The EORTC QLQ-C30 assesses various patient-reported outcomes, including level of functioning, overall or global quality of life, and symptoms such as pain and depression.

Physical functioning is clearly a key component of quality of life and is usually assessed objectively by using performance status (PS) scales.^{4,5} Moreover, because of its clear prognostic

value for survival, PS is used to guide the clinician regarding the most appropriate treatment for patients with advanced cancer. As early as the first century, Celsus' *De Medicina* described the cardinal signs of inflammation as a key component of pain and disease.⁶ These early observations are now supported by recent consistent evidence that pain and other symptoms are related to systemic inflammation in the cancer setting.^{7,8}

The presence of systemic inflammation is also recognized to have independent prognostic value in patients with cancer. In particular, the combination of C-reactive protein (CRP) and albumin (termed the modified Glasgow Prognostic Score [mGPS]) has been shown to have prognostic value complementary to PS in patients with advanced cancer.⁹⁻¹² In patients near the end of life, both PS and the systemic inflammatory response are affected, and therefore deteriorating quality of life may be affected by decreasing PS, systemic inflammation, or both. The question is: How do PS and the systemic inflammatory response interact with patient-reported outcome measures (PROMs) of quality of life? If these PROMs were shown to be associated specifically with PS and/or systemic inflammation, then this would provide valuable insight into their etiology. Furthermore, it would enable key components of quality of life to be targeted by using interventions that improve PS and/or attenuate systemic inflammation.

The aim of this study was therefore to evaluate key components of quality of life (by using PROMs) and to examine their relationship to PS and the systemic inflammatory response. The hypothesis being examined was that systemic inflammation is associated with quality of life independent of PS.

METHODS

Study Sample

An international biobank of adult patients with cancer was analyzed. These data were collected prospectively at a single time point from multiple centers across Europe.^{13,14} Patients were age 18 years or older, had metastatic or locoregional cancer, and were recruited from both inpatient and outpatient settings by using a convenience sampling approach. Patients who could not communicate in the primary language at the study center and/or had a psychiatric diagnosis with cognitive impairment were excluded. All patients provided written informed consent for their data to be stored and assessed, with ethical approval accordingly.

Procedure and Assessment

All patients had age, sex, primary cancer type, presence of metastatic disease, and PS recorded. Data were collected on quality-of-life variables by using PROMs from the EORTC QLQ-C30 version 3.³ The following were assessed: global health status, role function, cognitive function, physical function, emotional function, social function, fatigue, nausea and vomiting, pain, dyspnea, insomnia, appetite, constipation, and diarrhea.

Systemic inflammation was measured by using CRP and albumin and was taken by venous blood sampling at point of consent. The limit of detection of CRP was < 5 mg/L, and all samples (CRP and albumin) were analyzed at a central laboratory. The mGPS was calculated as follows:

- CRP ≤ 10 mg/L = 0
- CRP > 10 mg/L = 1
- CRP > 10 mg/L and albumin < 35 g/L = 2

Increasing mGPS score is related to increasing systemic inflammation, and these cutoffs are based on previous studies that examined the mGPS.⁹

Statistical Analysis

Key patient demographic characteristics were described. If a variable was considered binary and/or categorical, then the number and percentage across the patient population are presented. The normality of the data of the EORTC-QLQ-C30 scales was examined by using Q-Q plots (Data Supplement). The plots indicated that it was reasonable to present parametric statistics.

If a variable was considered continuous, then the mean and standard deviation are presented (unless otherwise specified). All statistical testing was conducted at the 5% significance level and 95% CIs are reported throughout. Because of the large number of comparisons depicted in Tables 1 and 2, the Bonferroni correction was applied, and statistical significance was taken as $P < .001$.

Assessment of PROMs was performed by using the EORTC QLQ-C30 scales calculated by the scoring procedures as described by Aaronson et al.^{3,15} EORTC QLQ-C30 scales were analyzed as discrete categories representing underlying continuous constructs. A high score on a global health or functional scale represents a high or healthy level of functioning; a high score on the symptom scale represents a high level of symptoms. Differences in EORTC scales were interpreted as having little, moderate, or substantial effect clinically, on the basis of a change of > 5 to 10, 10 to 20, or > 20 points, respectively.^{16,17} To facilitate analysis, Karnofsky PS was transformed as described by Ma et al¹⁸ into Eastern Cooperative Oncology Group (ECOG) PS groupings. The mGPSs were grouped by using thresholds described previously.

To examine the relationship between PROMs and ECOG PS, a series of χ^2 tests for trend were used. Similar analysis was performed to examine the relationship between PROMs and mGPS. A multivariate logistic regression analysis was also performed by using selected functional and symptom scales separately to help predict mGPS in the ECOG PS 0-1 cohort.

To examine whether any of the statistically significant EORTC QLQ-C30 parameters were individually associated with mGPS in the ECOG PS 0-1 cohort, multivariate logistic regression analysis was carried out for functional and symptom scales separately. Backward elimination regression was performed in which the significance level to stay in the model was set at 0.1. All analyses were performed in SPSS Version 21.0 (SPSS, Chicago, IL).

RESULTS

Of the complete biobank data (N = 3,311), data on systemic inflammation and PS were available for 2,520 patients. EORTC QLQ-C30 data were available for approximately 2,200 patients. Patient demographic characteristics are provided in Table 3. The most common cancer types were GI (585 patients [23.2%]) and pulmonary (443 patients [17.6%]). The mean age was 62.4 years (standard deviation, 12.21 years), and the median survival was 4.25 months (interquartile range, 1.36 to 12.9 months). The majority of patients were inpatients (1,947 [77.3%]), and the median PS was 2 (interquartile range, 1 to 3). In all, 1,830 patients (72.6%) had metastatic disease.

The relationship between PROMs (global health, role function, cognitive function, physical function, emotional function, and social function), PS, and systemic inflammation is depicted in Table 1. Deteriorating PS and increasing mGPS (systemic inflammation) were individually associated with a worsening in all EORTC PROMs ($P < .001$ and $P < .001$, respectively, for all PROMs). In particular, there was a deterioration in global health outcomes across mGPSs independent of PS (ie, PS 0-1 category: mGPS 0, 56.3; mGPS 1, 51.1; mGPS 2, 45.3; $P < .001$). A similar

Systemic Inflammation Affects Quality of Life

Table 1. Relationship Between EORTC QLQ-C30 Global Health Status/Functional Scales (discrete categories) and ECOG PS and mGPS

ECOG PS	mGPS												P
	0			1			2			All			
	Total No.	Mean	SD	Total No.	Mean	SD	Total No.	Mean	SD	Total No.	Mean	SD	
Global health													
0-1	313	56.3	23.7	148	51.1	23.1	197	45.3	21.6	658	51.8	23.4	< .001
2	295	44.9	23.6	211	40.4	20.3	398	37.2	23.2	904	40.5	22.9	< .001
3	119	40.1	24.4	65	33.2	21.5	326	34.8	23.5	510	35.8	23.6	.062
4	26	31.4	25.4	6	30.6	16.4	80	31.5	24.4	112	31.4	24.1	.983
All	753	48.4	24.9	430	42.9	22.4	1,010	37.6	23.5	2,184	42.3	24.2	< .001
P	< .001			< .001			< .001			< .001			
Role													
0-1	315	56.5	32.7	148	47.0	31.0	198	38.4	32.1	661	48.9	33.0	< .001
2	297	32.1	30.4	211	30.4	27.6	398	24.7	28.0	906	28.5	28.9	.001
3	120	19.7	26.0	69	15.9	25.3	333	15.3	23.6	522	16.4	24.4	.099
4	27	7.4	16.2	6	8.3	20.4	80	8.1	15.9	113	8.0	16.1	.848
All	759	39.3	34.0	434	33.4	30.4	1,009	23.0	28.3	2,202	30.7	31.7	< .001
P	< .001			< .001			< .001			< .001			
Cognitive													
0-1	314	78.9	22.9	149	78.2	22.7	199	74.6	24.0	662	77.4	23.2	.050
2	296	69.3	25.5	212	70.9	23.7	400	64.6	27.1	908	67.6	25.9	.013
3	119	61.6	27.0	68	63.2	28.0	332	58.7	28.1	519	60.0	27.8	.242
4	26	61.5	27.8	6	72.2	25.1	80	49.4	28.0	112	53.4	28.4	.035
All	755	71.8	25.6	435	72.2	24.5	1,011	63.4	27.8	2,201	68.0	26.7	< .001
P	< .001			< .001			< .001			< .001			
Physical													
0-1	315	69.2	20.3	149	63.7	23.1	205	58.7	24.0	663	64.8	22.5	< .001
2	298	48.7	22.5	216	46.1	20.1	439	43.2	21.5	914	45.7	21.6	.001
3	119	24.0	21.4	69	26.3	24.0	415	22.5	19.8	520	23.3	20.8	.345
4	27	9.4	17.2	6	14.4	32.2	153	13.2	16.8	113	12.4	17.8	.353
All	759	51.9	27.6	440	48.5	25.6	1,212	37.0	25.8	2,210	44.5	27.3	< .001
P	< .001			< .001			< .001			< .001			
Emotional													
0-1	314	73.4	23.4	149	72.1	22.8	199	69.6	24.0	662	71.9	23.5	.080
2	296	67.9	23.9	212	71.0	20.9	400	66.5	26.4	908	68.0	24.5	.371
3	119	68.3	26.4	67	60.2	24.4	332	64.9	26.7	518	65.1	26.4	.374
4	26	66.8	23.8	6	66.7	24.2	80	59.1	25.9	112	61.3	25.4	.160
All	755	70.2	24.3	434	69.7	22.5	1,011	65.9	26.1	2,200	68.2	24.9	< .001
P	.011			.002			.003			< .001			
Social													
0-1	314	65.5	29.9	149	57.6	30.4	198	50.5	32.6	661	59.3	31.5	< .001
2	296	46.6	31.3	211	49.8	30.2	400	41.0	31.7	907	44.9	31.4	.012
3	119	49.0	35.7	67	43.3	35.8	330	40.2	32.7	516	42.6	33.9	.016
4	26	44.9	35.5	6	19.4	22.2	80	38.7	32.0	112	39.1	32.6	.537
All	755	54.8	32.9	433	51.0	31.6	1,008	42.4	32.4	2,196	48.3	32.9	< .001
P	< .001			< .001			.001			< .001			

NOTE. The columns of P values show the χ^2 test for trend results examining the relationship between modified Glasgow Prognostic Score (mGPS) and the global health/patient-reported outcome measures (PROMs) discrete categories for each performance status group separately. The rows of P values show the χ^2 test for trend results examining the relationship between performance status and global health/PROMs discrete categories for each mGPS group separately.

Abbreviations: ECOG PS, Eastern Cooperative Oncology Group performance status; EORTC QLQ-C30, European Organisation for Research and Treatment of Cancer Quality of Life Questionnaire C-30; SD, standard deviation.

pattern was also seen with role, physical, and social outcome measures ($P < .001$).

Because it was anticipated that patient-assessed physical function (EORTC) and clinician-assessed PS (ECOG) both reflect activity level, the relationship between them was examined and is shown in Figure 1. The Spearman rank correlation was -0.61 ($P < .001$). This shows that as PS deteriorated (ie, increasing ECOG score), patient-assessed physical function score decreased.

The relationship between symptom components of quality of life (fatigue, nausea, pain, dyspnea, sleep, appetite, constipation, and diarrhea), PS, and systemic inflammation is depicted in

Table 2. Deteriorating PS and increasing mGPS (systemic inflammation) were individually associated with a worsening of almost all symptoms: fatigue ($P < .001$ and $P < .001$, respectively), nausea ($P < .001$ and $P < .001$, respectively), pain ($P < .001$ and $P < .001$, respectively), dyspnea ($P < .001$ and $P < .001$, respectively), and appetite ($P < .001$ and $P < .001$, respectively). However, a worsening in constipation symptoms was associated with deteriorating PS only ($P < .001$). In particular, there was a deterioration in fatigue across mGPS categories, despite having good PS (ie, PS 0-1 category: mGPS 0, 44.5; mGPS 1, 51.6; mGPS 2, 57.2; $P < .001$). A similar pattern was also seen with pain, appetite, and diarrhea ($P < .001$).

Table 2. Relationship Between EORTC QLQ-C30 Symptom Scales (discrete categories) and ECOG PS and mGPS

ECOG PS	mGPS												<i>P</i>
	0			1			2			All			
	Total No.	Mean	SD	Total No.	Mean	SD	Total No.	Mean	SD	Total No.	Mean	SD	
Fatigue													
0-1	315	44.5	25.8	149	51.6	24.0	199	57.2	25.8	663	49.9	25.9	< .001
2	296	59.3	23.7	212	62.7	23.5	401	68.7	24.4	909	64.2	24.3	< .001
3	120	65.2	24.7	68	70.3	23.2	333	68.2	24.4	521	67.8	24.3	.330
4	26	68.4	23.5	6	74.1	25.0	80	71.7	22.2	112	71.0	22.5	.551
All	757	54.4	26.2	435	60.2	24.5	1,013	66.5	24.9	2,205	61.1	25.8	< .001
<i>P</i>		< .001			< .001			< .001			< .001		
Nausea													
0-1	314	15.5	23.1	149	14.5	20.4	199	20.9	24.6	662	16.9	23.1	.017
2	297	22.2	27.2	215	21.4	24.5	401	29.5	31.3	913	25.2	28.7	< .001
3	120	18.3	25.0	68	27.0	29.4	334	23.3	27.0	522	22.6	26.9	.152
4	26	17.9	24.0	6	33.3	36.5	81	24.5	29.8	113	23.5	28.9	.381
All	757	18.6	25.2	438	20.1	24.5	1,015	25.4	28.7	2,210	22.0	26.9	< .001
<i>P</i>		.109			< .001			.935			< .001		
Pain													
0-1	315	37.1	30.3	149	51.1	31.2	199	52.0	32.2	663	44.7	31.9	< .001
2	297	54.1	30.5	215	60.1	28.2	401	61.5	30.5	913	58.8	30.1	.002
3	120	56.5	31.3	69	68.8	26.8	333	62.9	28.3	522	62.2	29.0	.100
4	26	55.8	35.9	6	77.8	32.8	81	65.4	27.7	113	63.9	30.2	.212
All	758	47.5	31.9	439	58.7	29.7	1,014	60.4	30.2	2,211	55.6	31.2	< .001
<i>P</i>		< .001			< .001			< .001			< .001		
Dyspnea													
0-1	314	23.0	27.6	149	27.7	30.9	199	28.5	32.4	662	25.7	29.9	.036
2	295	28.7	32.3	215	33.2	34.2	400	37.8	35.6	910	33.7	34.4	.001
3	119	34.5	33.0	69	41.5	36.8	331	37.5	34.2	519	37.3	34.3	.552
4	26	30.8	31.2	6	44.4	45.5	81	45.7	39.2	113	42.2	38.1	.089
All	754	27.3	30.7	439	32.8	33.9	1,011	36.5	35.1	2,204	32.6	33.6	< .001
<i>P</i>		.001			.004			< .001			< .001		
Sleep													
0-1	315	28.8	30.7	149	31.1	32.0	199	34.5	33.7	663	31.0	31.6	.046
2	296	36.5	33.1	214	35.8	33.8	401	36.7	34.7	911	36.4	34.0	.931
3	120	35.6	34.5	66	34.8	32.3	331	31.7	33.0	517	33.0	33.2	.249
4	26	30.8	35.2	6	16.7	27.9	81	28.8	33.2	113	28.6	33.3	.892
All	757	32.9	32.6	435	33.8	32.3	1,012	34.0	33.9	2,204	33.6	33.1	.514
<i>P</i>		.041			.585			.072			.834		
Appetite													
0-1	314	28.7	31.9	149	32.9	34.2	199	47.4	35.3	662	35.2	34.4	< .001
2	297	39.8	36.9	213	44.0	35.8	398	55.9	37.4	908	47.9	37.5	< .001
3	120	36.1	34.7	68	56.4	34.7	333	54.3	36.5	521	50.4	36.6	< .001
4	26	43.6	36.2	6	44.4	45.5	81	55.6	36.1	113	52.2	36.7	.132
All	757	34.7	34.9	436	42.1	36.0	1,011	53.7	36.7	2,204	44.9	36.9	< .001
<i>P</i>		.001			< .001			.086			< .001		
Constipation													
0-1	313	29.1	33.8	149	35.6	34.1	199	36.3	36.0	661	32.7	34.7	.015
2	297	41.2	37.3	213	42.7	35.8	400	46.3	39.2	910	43.8	37.9	.071
3	118	46.3	36.7	68	56.9	36.0	329	41.9	37.5	515	44.9	37.4	.107
4	26	53.8	41.2	6	38.9	49.1	79	44.7	38.8	111	46.5	39.8	.347
All	754	37.4	36.7	436	42.4	36.0	1,007	42.8	38.1	2,197	40.9	37.3	.003
<i>P</i>		< .001			< .001			.214			< .001		
Diarrhea													
0-1	314	16.7	26.5	149	13.2	23.5	199	26.3	33.3	662	18.8	28.5	.001
2	297	19.5	31.2	212	16.7	28.0	398	22.2	30.7	907	20.0	30.3	.203
3	117	17.1	28.6	67	13.4	27.3	329	20.6	33.3	513	18.8	31.6	.197
4	26	14.1	23.4	6	5.6	13.6	80	16.3	27.6	112	15.2	26.0	.625
All	754	17.8	28.7	434	14.8	26.3	1,006	22.0	31.9	2,194	19.1	29.9	.002
<i>P</i>		.905			.925			.011			.506		

NOTE. The columns of *P* values show the χ^2 test for trend results examining the relationship between modified Glasgow Prognostic Score (mGPS) and the global health/patient-reported outcome measures (PROMs) discrete categories for each performance status group separately. The rows of *P* values show the χ^2 test for trend results examining the relationship between performance status and global health/PROMs discrete categories for each mGPS group separately.

Abbreviations: ECOG PS, Eastern Cooperative Oncology Group performance status; EORTC QLQ-C30, European Organisation for Research and Treatment of Cancer Quality of Life Questionnaire C-30; SD, standard deviation.

Table 3. Patient Demographic Characteristics (N = 2,520)		
Characteristic	No.	%
Age, years		
< 65	1,382	54.8
65-74	704	27.9
≥ 75	434	17.2
Sex		
Male	1,304	51.7
Female	1,216	48.3
Primary cancer site		
Breast	341	13.5
Urologic	423	16.8
Gynecologic	154	6.1
GI	585	23.2
Hematologic	133	5.3
Head and neck	106	4.2
Pulmonary	443	17.6
Other	335	13.3
Spread		
None	302	12.0
Locoregional	388	15.4
Metastases	1,830	72.6
Place of care		
Inpatient	1,947	77.3
Outpatient	573	22.8
ECOG performance score		
0-1	682	27.1
2	994	39.4
3	646	25.6
4	198	7.9
mGPS		
0	807	32.0
1	501	19.9
2	1,212	48.1

Abbreviations: ECOG, Eastern Cooperative Oncology Group; mGPS, modified Glasgow Prognostic Score.

Of the significant function scales (ie, role function, physical function, and social function) on mGPS, only role function was independently associated with the mGPS (odds ratio [OR], 0.986; 95% CI, 0.980 to 0.991; $P < .001$). Of the significant symptom scales (ie, fatigue, pain, and appetite) on mGPS, only fatigue (OR, 1.009; 95% CI, 1.002 to 1.017; $P = .018$) and appetite (OR, 1.012; 95% CI, 1.006 to 1.017; $P < .001$) were independently associated with the mGPS.

Of those independently associated (eg, in ECOG PS 0-1 category) with mGPS, role function, fatigue, and appetite had differences of 18.1 points (32.0%), 12.7 points (22.2%), and 18.7 points (39.4%) across mGPS categories, consistent with clinically meaningful deterioration in quality of life.

DISCUSSION

To the best of our knowledge, this is the first study to examine how the combination of PS (ECOG) and systemic inflammation (mGPS) relates to functional and symptom scales of quality of life in patients with advanced cancer. In particular, the results of this study show a clear and consistent relationship between worsening of quality-of-life parameters, such as global health, role, physical and social functioning, and fatigue, pain, appetite symptoms with increased systemic inflammation, independent of good PS. Taken

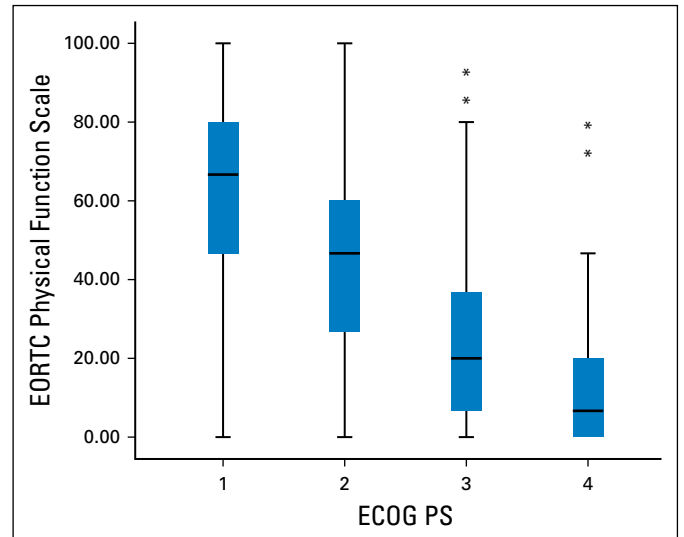


Fig 1. Box and whisker plot showing the relationship between European Organization for Research and Treatment of Cancer (EORTC) Quality of Life Questionnaire C-30 physical function scale and Eastern Cooperative Oncology Group performance status (ECOG PS). Spearman rank correlation was -0.61 ($P < .001$). (*) Outlier values that are greater than $1.5 \times$ interquartile range.

together, the results of this large cohort study suggest that the presence of a systemic inflammatory response is associated with functional decline and may be a factor associated with the deterioration of quality of life in patients with advanced cancer.

The implications of these results are several and profound. First, given that the same combination of ECOG PS and the mGPS has previously been shown to effectively predict survival rates in patients with advanced cancer,¹⁰ this objectively ties the deterioration of different PROMs to the deterioration of likely survival. Therefore, for the first time, the combination of ECOG PS and mGPS provides a simple framework for the study of quality of life and the impact of symptom control on survival in patients with advanced cancer.

Second, the findings support the rationale that attenuation of the systemic inflammatory response may improve quality of life in patients with cancer.¹⁹ The systemic inflammatory response in patients with cancer primarily reflects an upregulation of the innate immune/inflammatory response. Whether this results primarily from proinflammatory cytokines from tumor cells, stromal cells, inflammatory cells, or a combination is not yet clear. Given these results and their role in elaborating the systemic inflammatory response and changes in tissue metabolism, the interleukin-6 (IL-6)/Janus kinase/signal transducer and activator of transcription (JAK/STAT) pathway is a plausible mediator of the deterioration of PS and quality of life in patients with advanced cancer.^{20,21} This approach is the subject of ongoing clinical trials and will provide new insight into whether the relationship between the systemic inflammatory response and quality of life is causal in nature.²⁰ Indeed, it is our hope that our results will stimulate further studies to examine the nature of the relationship between the components of the EORTC QLQ-C30, ECOG PS, and the mGPS in clinical trial data.

These persuasive arguments challenge the traditional paradigm in advanced cancer of treating symptoms once they have developed. This is in contrast to other disease groups (eg, cardiovascular disease, diabetes, and rheumatology) in which treatment is aimed at prevention

or risk reduction of disease sequelae.^{22,23} Because there is an attitude of therapeutic nihilism that refractory cancer symptoms (eg, difficult-to-control pain, fatigue, and cachexia) are an inevitable consequence of advanced disease, there has been a failure to advance the research agenda in symptom management. Now there is a sound rationale for a proactive or preventative approach to treating symptoms in advanced cancer and the systemic inflammatory response is a feasible target for this.

Emerging evidence seems to support this rationale. To illustrate, the beneficial effects on cancer cachexia in non-small-cell lung cancer have been reported by using tocilizumab (an IL-6 receptor antibody), IL-6 having a seminal role in tumorigenesis.²⁴ Further downstream in the innate immunity pathway, JAK1 inhibition by using ruxolitinib improved symptoms in patients with myelofibrosis.²⁵ Future clinical trials that target inflammation through both specific and broad immunomodulatory approaches and that have quality-of-life parameters as primary end points are now warranted.

In patients near the end of life, both PS and the systemic inflammatory response are altered, and therefore poorer quality of life may be a result of poorer PS, systemic inflammation, or both. A possible alternative explanation is that systemic inflammation merely reflects the tumor burden and that it is the tumor-specific molecular processes that drive both the alterations in PS and the systemic inflammatory response. However, over the last 15 years, there has been an evolution in the thinking of how tumors grow and disseminate: from the earlier work in which the intrinsic characteristics of the tumor were considered to largely determine the process²⁶ to an understanding that local²⁷ and systemic inflammatory responses²⁸ play a key role in disease progression and survival in patients with cancer.

This concept is consistent with recent progress in the area of immuno-oncology and suggests a more complex tumor-host interaction. The systemic inflammatory response is now recognized to have prognostic value, independent of tumor stage, in patients with cancer.⁹ In particular, the combination of CRP and albumin to form a cumulative systemic inflammation-based prognostic score (mGPS) has been shown to have prognostic value complementary to PS in patients with advanced cancer in whom tumor stage has less value.⁹⁻¹² That the systemic inflammatory response is associated with a poorer quality of life, even in patients with good PS, suggests an inflammatory basis, at least in part, to changes in quality of life and PROMs in patients with advanced cancer. Furthermore, it suggests that immune interventions that attenuate systemic inflammation may improve key components of quality of life.

The main limitation of this study is that other factors (eg, oncology treatment) may have affected the quality-of-life parameters reported. However, the size of the population studied combined with the heterogeneity of the primary cancer types suggest that they would have been unlikely to affect the quality-of-life parameters. In addition, the convenience sampling approach in the primary data collection resulted in small numbers of patients with ECOG PS 4 category, but this may reflect that such patients are too unwell to participate in clinical trials. In this study, the associations reported cannot be interpreted as having causal relationship.

Another interesting aspect is whether patient-assessed measures are comparable to physician-assessed measures: EORTC QLQ-C30 Physical Function versus ECOG PS. In this study, there was a strong negative correlation ($r_s = -0.61$; $P < .001$) between the patient-assessed physical function (EORTC) and clinician-assessed PS (ECOG), that is, as physical function score decreases (worsens) PS increases (gets worse).²⁹ This seems to confirm that the patient and physician are both assessing a similar quality-of-life domain.

Several function scales (role function, physical function, and social function) were associated with the mGPS independent of good ECOG PS. However, on multiple regression analysis, only role function was independently associated with the mGPS. Similarly, several symptom scales (fatigue, pain, and appetite) were associated with the mGPS independent of ECOG PS. However, on multiple regression analysis, only fatigue and appetite symptoms were independently associated with the mGPS. Taken together, our results suggest that the systemic inflammatory response plays a role in the deterioration of quality of life in patients with advanced cancer. In addition, the findings suggest that, independent of good PS, the systemic inflammatory response has its main effect on appetite, fatigue, and role functioning of patients with advanced cancer. Further longitudinal and interventional studies are required to tease out the nature of these independent relationships.

In conclusion, the results of this study in a large international cohort highlight the relationship between systemic inflammatory response and deterioration of quality of life, independent of PS, in patients with advanced cancer. These results have significant implications for better understanding and improving treatment of the deterioration of quality of life commonly experienced in patients with advanced cancer. The increasing implementation of immunotherapies in the treatment of advanced cancer provide a fertile ground for expanding the role of these therapies in improving patients' quality of life. After all, in patients with advanced cancer, optimizing quality of life is the central tenet of cancer care.

AUTHORS' DISCLOSURES OF POTENTIAL CONFLICTS OF INTEREST

Disclosures provided by the authors are available with this article at www.jco.org.

AUTHOR CONTRIBUTIONS

Conception and design: Barry J.A. Laird, Donald C. McMillan

Administrative support: Stein Kaasa, Pål Klepstad

Provision of study materials or patients: Marianne J. Hjermstad, Stein Kaasa, Pål Klepstad

Collection and assembly of data: Barry J.A. Laird, Marianne J. Hjermstad, Stein Kaasa, Pål Klepstad

Data analysis and interpretation: All authors

Manuscript writing: All authors

Final approval of manuscript: All authors

REFERENCES

1. Fayers PM, Machin D: *Quality of Life: The Assessment, Analysis and Interpretation of Patient-Reported Outcomes* (ed 2). Chichester, United Kingdom, John Wiley & Sons, 2007
2. Velikova G, Coens C, Efficace F, et al: Health-related quality of life in EORTC clinical trials: 30 years of progress from methodological developments to making a real impact on oncology practice. *Eur J Cancer* 10:141-149, 2012
3. Aaronson NK, Ahmedzai S, Bergman B, et al: The European Organization for Research and Treatment of Cancer QLQ-C30: A quality-of-life instrument for use in international clinical trials in oncology. *J Natl Cancer Inst* 85:365-376, 1993
4. MacLeod C (ed): *The clinical evaluation of chemotherapeutic agents in cancer*, in *Evaluation of Chemotherapeutic Agents*. New York, NY, Columbia University Press, 1949, pp 196
5. Buccheri G, Ferrigno D, Tamburini M: Karnofsky and ECOG performance status scoring in lung cancer: A prospective, longitudinal study of 536 patients from a single institution. *Eur J Cancer* 32A:1135-1141, 1996
6. Wallach D, Kang TB, Kovalenko A: Concepts of tissue injury and cell death in inflammation: A historical perspective. *Nat Rev Immunol* 14:51-59, 2014
7. Laird BJ, Scott AC, Colvin LA, et al: Cancer pain and its relationship to systemic inflammation: An exploratory study. *Pain* 152:460-463, 2011
8. Laird BJ, McMillan DC, Fayers P, et al: The systemic inflammatory response and its relationship to pain and other symptoms in advanced cancer. *Oncologist* 18:1050-1055, 2013
9. McMillan DC: The systemic inflammation-based Glasgow Prognostic Score: A decade of experience in patients with cancer. *Cancer Treat Rev* 39:534-540, 2013
10. Laird BJ, Kaasa S, McMillan DC, et al: Prognostic factors in patients with advanced cancer: A comparison of clinicopathological factors and the development of an inflammation-based prognostic system. *Clin Cancer Res* 19:5456-5464, 2013
11. Miura T, Matsumoto Y, Hama T, et al: Glasgow prognostic score predicts prognosis for cancer patients in palliative settings: A subanalysis of the Japan-prognostic assessment tools validation (J-ProVal) study. *Support Care Cancer* 23:3149-3156, 2015
12. de Paula Pantano N, Paiva BS, Hui D, et al: Validation of the Modified Glasgow Prognostic Score in advanced cancer patients receiving palliative care. *J Pain Symptom Manage* 51:270-277, 2016
13. Klepstad P, Fladvad T, Skorpen F, et al: Influence from genetic variability on opioid use for cancer pain: A European genetic association study of 2294 cancer pain patients. *Pain* 152:1139-1145, 2011
14. Hjermstad MJ, Lie HC, Caraceni A, et al: Computer-based symptom assessment is feasible in patients with advanced cancer: Results from an international multicenter study, the EPCRC-CSA. *J Pain Symptom Manage* 44:639-654, 2012
15. Johnson C, Aaronson N, Blazeby J, et al: *Guidelines for Developing Questionnaire Modules*. (ed 4). Brussels, Belgium, EORTC Quality of Life Group, 2011
16. Fayers PM, Aaronson NK, Bjordal K, et al: *EORTC QLQ-C30 Scoring Manual* (ed 3). Brussels, Belgium, European Organisation for Research and Treatment of Cancer, 2001
17. Osoba D, Rodrigues G, Myles J, et al: Interpreting the significance of changes in health-related quality-of-life scores. *J Clin Oncol* 16:139-144, 1998
18. Ma C, Bandukwala S, Burman D, et al: Interconversion of three measures of performance status: An empirical analysis. *Eur J Cancer* 46:3175-3183, 2010
19. Diakos CI, Charles KA, McMillan DC, et al: Cancer-related inflammation and treatment effectiveness. *Lancet Oncol* 15:e493-e503, 2014
20. Roxburgh CS, McMillan DC: Therapeutics targeting innate immune/inflammatory responses through the interleukin-6/JAK/STAT signal transduction pathway in patients with cancer. *Transl Res* 167:61-66, 2016
21. Sala D, Sacco A: Signal transducer and activator of transcription 3 signaling as a potential target to treat muscle wasting diseases. *Curr Opin Clin Nutr Metab Care* 19:171-176, 2016
22. Weiss U: Inflammation. *Nature* 454:427, 2008
23. Mantovani A, Allavena P, Sica A, et al: Cancer-related inflammation. *Nature* 454:436-444, 2008
24. Ando K, Takahashi F, Kato M, et al: Tocilizumab, a proposed therapy for the cachexia of Interleukin-6-expressing lung cancer. *PLoS One* 9:e102436, 2014
25. Verstovsek S, Mesa RA, Gotlib J, et al: A double-blind, placebo-controlled trial of ruxolitinib for myelofibrosis. *N Engl J Med* 366:799-807, 2012
26. Hanahan D, Weinberg RA: The hallmarks of cancer. *Cell* 100:57-70, 2000
27. Hanahan D, Weinberg RA: Hallmarks of cancer: The next generation. *Cell* 144:646-674, 2011
28. McAllister SS, Weinberg RA: The tumour-induced systemic environment as a critical regulator of cancer progression and metastasis. *Nat Cell Biol* 16:717-727, 2014
29. Evans JD: *Straightforward Statistics for the Behavioral Sciences*. Pacific Grove, CA, Brooks/Cole Publishing, 1996

AUTHORS' DISCLOSURES OF POTENTIAL CONFLICTS OF INTEREST

Quality of Life in Patients With Advanced Cancer: Differential Association With Performance Status and Systemic Inflammatory Response

The following represents disclosure information provided by authors of this manuscript. All relationships are considered compensated. Relationships are self-held unless noted. I = Immediate Family Member, Inst = My Institution. Relationships may not relate to the subject matter of this manuscript. For more information about ASCO's conflict of interest policy, please refer to www.asco.org/rwc or jco.ascopubs.org/site/ifc.

Barry J.A. Laird

No relationship to disclose

Marie Fallon

Honoraria: GW Pharmaceuticals

Speakers' Bureau: Mundipharma

Research Funding: Pfizer, Mundipharma, GW Pharmaceuticals

Travel, Accommodations, Expenses: Mundipharma, Astellas Pharma

Marianne J. Hjermstad

No relationship to disclose

Sharon Tuck

No relationship to disclose

Stein Kaasa

No relationship to disclose

Pål Klepstad

No relationship to disclose

Donald C. McMillan

No relationship to disclose