



# THE UNIVERSITY *of* EDINBURGH

## Edinburgh Research Explorer

### Role for migratory wild birds in the global spread of avian influenza H5N8

**Citation for published version:**

Lycett, S, Bodewes, R, Pohlmann, A, Banks, J, Bányai, K, Boni, MF, Bouwstra, R, Breed, AC, Brown, IH, Chen, H, Dán, Á, DeLiberto, TJ, Diep, N, Gilbert, M, Hill, S, Ip, HS, Ke, CW, Kida, H, Killian, ML, Koopmans, MP, Kwon, J-H, Lee, D-H, Lee, JY, Lu, L, Monne, I, Pasick, J, Pybus, OG, Rambaut, A, Robinson, TP, Sakoda, Y, Zohari, S, Song, C-S, Swayne, DE, Torchetti, MK, Tsai, H-J, Fouchier, RAM, Beer, M, Woolhouse, M & Kuiken, T 2016, 'Role for migratory wild birds in the global spread of avian influenza H5N8' *Science*, vol. 354, no. 6309, pp. 213-217. DOI: 10.1126/science.aaf8852

**Digital Object Identifier (DOI):**

[10.1126/science.aaf8852](https://doi.org/10.1126/science.aaf8852)

**Link:**

[Link to publication record in Edinburgh Research Explorer](#)

**Document Version:**

Peer reviewed version

**Published In:**

Science

**Publisher Rights Statement:**

This is the author's peer-reviewed manuscript as accepted for publication

**General rights**

Copyright for the publications made accessible via the Edinburgh Research Explorer is retained by the author(s) and / or other copyright owners and it is a condition of accessing these publications that users recognise and abide by the legal requirements associated with these rights.

**Take down policy**

The University of Edinburgh has made every reasonable effort to ensure that Edinburgh Research Explorer content complies with UK legislation. If you believe that the public display of this file breaches copyright please contact [openaccess@ed.ac.uk](mailto:openaccess@ed.ac.uk) providing details, and we will remove access to the work immediately and investigate your claim.



# 1           **Role for migratory wild birds in the global spread of avian influenza H5N8**

2  
3                           The Global Consortium for H5N8 and Related Influenza Viruses\*†

## 4   **Abstract**

5 Avian influenza viruses affect both poultry production and public health. A subtype H5N8 (clade  
6 2.3.4.4) virus, following an outbreak in poultry in South Korea in 2013/2014, rapidly spread worldwide  
7 in 2014/2015. Our analysis of H5N8 viral sequences, epidemiological investigations, waterfowl  
8 migration, and poultry trade showed that long-distance migratory birds can play a major role in the  
9 global spread of avian influenza viruses. Further, we found that the haemagglutinin of clade 2.3.4.4  
10 virus was remarkably promiscuous, creating reassortants with multiple neuraminidase subtypes.  
11 Improving our understanding of the circumpolar circulation of avian influenza viruses in migratory  
12 waterfowl will help to provide early warning of threats from avian influenza to poultry, and potentially  
13 human, health.

## 14 15   **One Sentence Summary**

16 Interdisciplinary analysis showed a major role for long-distance migratory birds in the global spread of  
17 avian influenza virus H5N8 via (sub)arctic breeding areas.

---

\*To whom correspondence should be addressed: Thijs Kuiken. E-mail: t.kuiken@erasmusmc.nl

†All authors with their affiliations appear at the end of this paper

18 In 2014, highly pathogenic avian influenza (HPAI) virus of the subtype H5N8 caused disease  
19 outbreaks in poultry in Asia, Europe and North America (1–3). Avian influenza viruses are a threat  
20 both to global poultry production and to public health; they have the potential to cause severe disease  
21 in people, and to adapt to transmit efficiently in human populations (4). This was the first time since  
22 2005 that a single subtype of HPAIV had spread over such a large geographical area, and that a  
23 Eurasian HPAI virus had spread to North America. The rapid global spread of HPAI H5N8 virus  
24 outbreaks raised the question by which routes the virus had been transmitted.

25

26 The segment encoding for the haemagglutinin (HA) surface protein of the HPAI H5N8 viruses is a  
27 descendant of the HPAI H5N1 virus (A/Goose/Guangdong/1/1996), first detected in China in 1996 (5).  
28 Since then, HPAI H5N1 viruses have become endemic in poultry populations in several countries.  
29 The H5 viruses have developed new characteristics by mutation and by reassortment with other avian  
30 influenza (AI) viruses, both in poultry and wild birds. In 2005-2006, HPAI H5N1 spread from Asia to  
31 Europe, the Middle East, and Africa during the course of a few months. While virus spread  
32 traditionally had been attributed to transport of infected poultry, infected poultry products, or HPAI-  
33 virus-contaminated materials, several observations in the 2005-2006 epidemic suggested that wild  
34 birds also might have carried the virus to previously unaffected areas (6).

35

36 A HPAI H5N8 virus with genes from viruses of the influenza A (H5N1) A/Goose/Guangdong/1/1996  
37 lineage was first detected in birds at live bird markets in China in 2010 (1). This HPAI H5N8 virus was  
38 a reassortant virus with the HA gene segment from HPAI H5N1 virus and other gene segments from  
39 multiple other AI viruses circulating in eastern China (1), and is now categorized as HPAI H5 virus  
40 clade 2.3.4.4 (7). This clade is unusually promiscuous and has been found in combination with six  
41 different neuraminidase (NA) segments, and multiple H5Nx viruses may be circulating at the same  
42 time and in the same region (8, 9). The propensity of HPAI H5 virus clade 2.3.4.4 to form novel  
43 subtypes capable of rapid, global spread is a major concern.

44

45 HPAI H5N8 virus caused a large avian influenza outbreak in poultry in South Korea in the winter of  
46 2013/2014, and subsequently spread to Japan, North America, and Europe, causing outbreaks there  
47 between autumn 2014 and spring 2015 (**Table S1**). However, it is not clear by which routes HPAI  
48 H5N8 virus spread so rapidly around the world. Although there have been reports on parts of these  
49 outbreaks (1, 2, 10) and speculation on possible routes of transmission (3), no comprehensive global  
50 analysis has yet been performed.

51

52 The goal of this study was to analyse the available genetic, epidemiological and ornithological data for  
53 evidence of the relative contributions from poultry trade and from wild bird movements (3, 6) for the  
54 global spread of clade 2.3.4.4 during 2014-2015. For this purpose, we performed phylogeographic  
55 analysis of HPAI H5N8 viruses detected in wild birds and poultry from this global outbreak. In  
56 addition, we analysed migration patterns of wild birds found infected with HPAI H5N8 virus,

57 epidemiological investigations of HPAI H5N8 virus outbreaks, and poultry trade records from  
58 countries where HPAI H5N8 virus was reported (11).

59

60 Initial phylogenetic analysis was performed using HA sequences from HPAI H5 clade 2.3.4.4 viruses  
61 of poultry and wild birds from around the world between 2004 and 2015, including subtypes H5N1,  
62 H5N2, H5N3, H5N5, H5N6 and H5N8. From 2004 to 2012, clade 2.3.4.4 viruses were circulating  
63 predominantly in Eastern Asia (China) with some transmission to South Eastern Asia (**Figures 1 and**  
64 **S1**). During this period, transmission involving domestic anseriforms (ducks and geese) appears to  
65 dominate, although some contribution from domestic galliforms (chickens and turkeys) and short-  
66 distance migratory anseriforms (e.g. mallard ducks) is also evident (**Figure 1**). Unlike H5 segments  
67 from other clades, which are mostly found as H5N1, the HPAI H5 segment of the clade 2.3.4.4  
68 viruses reassort frequently, acquiring NA segments from co-circulating low pathogenic avian influenza  
69 (LPAI) subtypes, including N5 (from 2006-2010), N2 (from 2008-2012), and N8 (from 2010), and more  
70 recently N6 (from 2013) (8). To indicate the host species and regions in which the reassortments are  
71 thought to have occurred, a reassortment measure was calculated using the number of branches in  
72 the posterior set of phylogenetic trees for which the NA-subtype changed whilst the host species and  
73 region traits remained the same (normalized by branch lengths). This measure suggests that most of  
74 the observed reassortants were generated in domestic anseriforms (**Figure S2**), and particularly  
75 domestic anseriforms in Eastern Asia (China) within the time period 2004-2012 (**Figure S3**).

76

77 The time to the most recent common ancestor (TMRCA) for the HA segment of all clade 2.3.4.4 HPAI  
78 H5N8 sequences was estimated as June 2010 (95% highest posterior density (HPD): Jan-Oct 2010);  
79 the TMRCA for the corresponding NA segments was similar (Sep 2010, 95% HPD: Apr-Dec 2010).  
80 Clade 2.3.4.4 HA H5N8 sequences were found in two subclades (**Figure 1**). The smaller and earlier  
81 subclade (a in **Figure 1**) contained the first sequenced 2.3.4.4 HPAI H5N8 virus  
82 (A/Duck/Jiangsu/k1203/2010[H5N8]). The larger and more recent subclade (b in **Figure 1**) contained  
83 sequences from outbreaks in South Korea and other countries included in this study, and which  
84 caused multiple HPAI outbreaks in 2014 and 2015 globally. The TMRCA of subclade b was  
85 September 2013 for both HA (95% HPD: Jul-Nov 2013) and NA (95% HPD: May-Nov 2013).  
86 Consistent with earlier findings (1, 10), the phylogeny indicates that HPAI H5N8 was introduced into  
87 South Korea by long-distance migrant anseriforms that acquired it from the pool of HPAI H5 viruses  
88 circulating in domestic anseriforms in Eastern Asia (China), although we formally cannot exclude the  
89 possibility that HPAI H5 viruses were circulating in unsampled locations (**Figure 1**).

90

91 Distinct, well-supported clades were identified in South Korea, likely originating in the transmission of  
92 HPAI H5N8 viruses from long-distance migrants to other wild and domestic birds (10). One clade (c in  
93 **Figure 1**) was ancestral to the European outbreak and another (d in **Figure 1**) was ancestral to the  
94 North American outbreak. Again, we cannot exclude the possibility that viruses from these subclades  
95 were present in unsampled locations.

96

97 More detailed phylogenetic analyses, using only clade 2.3.4.4 H5N8 HA sequences with location  
98 coordinates, showed that the virus spread along two main long-distance migration routes: one from  
99 the east Asia coast/Korean peninsula, north to the Arctic coast of the Eurasian continent, then west to  
100 Europe; and the other north from the Korean peninsula, then east across the Bering Strait, and south  
101 along the north-west coast of the North American continent to Canada and the USA (**Figure 2** and  
102 **Movie S1**). The reconstruction did not indicate any spread between Europe and North America. The  
103 TMRCA for European HA segments was August 2014 (95% HPD: Jul-Oct 2014), and September-  
104 October 2014 (95% HPD: Aug-Nov 2014) for the North American HA segments (**Table S2a-b**). Similar  
105 results were found from analysis of the NA segments (**Table S2c-d**). There were also four separate  
106 introductions into Japan, the first estimated around February 2014 (ancestral date of single virus  
107 A/Chicken/Kumamoto/1-7/2014), and then three more, all with TMRCAs in October-November 2014.  
108 The sequences from one of the Japanese introductions were most closely related to sequences from  
109 Taiwan, and those from another to the Russian (A/wigeon/Sakha/1/2014) and European sequences.

110

111 The phylogenetic data were also used to infer the ancestral host categories of the most recent  
112 common ancestor of the European and North American outbreak sequences, thus providing evidence  
113 for which host type had introduced the viruses into those areas (**Figures 3, S4 and S5, Table S2**).  
114 The most likely ancestral host category for the North American outbreak for both HA and NA  
115 segments was long-distance migrants (HA: 66% and NA: 84%). A similar result was obtained for  
116 Europe (HA: 66% and NA: 70%).

117

118 Several wild bird species with known HPAI H5N8 sequences were long-distance migrants at different  
119 stages of their migratory cycle depending on time and place found (**Table S3**): five of the nine species  
120 found in South Korea in winter 2013/2014 were long-distance migrants at their wintering sites or on  
121 spring migration. Both in North America and Europe, two of the four species found in winter  
122 2014/2015 were long-distance migrants at their wintering sites or on autumn migration (11)(**Tables S4**  
123 **and S5, Figure S6**).

124

125 The April 2014 HPAI H5N8 virus outbreak in Japan had different characteristics to the later outbreaks  
126 in North America and Europe. The Japan outbreak was the only one that was contemporaneous with  
127 the outbreak in South Korea and no wild birds were found positive for HPAI H5N8 virus in Japan  
128 during that outbreak.

129

130 Qualitative analysis of data from outbreak investigations on affected poultry farms in North America,  
131 Europe and Japan (11) (**Table S6**) showed that the likelihood of virus introduction via contaminated  
132 water, feed and poultry was negligible (Germany). Furthermore, no links between the outbreaks in  
133 one country and those in other countries could be attributed to personnel contacts or trade of live  
134 animals, feed, or products of animal origin (Germany, The Netherlands, United Kingdom, Hungary).  
135 Many affected poultry farms were located in areas where wild waterfowl are abundant (Germany, The  
136 Netherlands, United Kingdom, Italy, Canada). Direct contact with infected wild birds (USA) or indirect

137 contact with materials (e.g., bedding material, boots, wheels of vehicles) contaminated with wild bird  
138 faeces was considered the most likely route of introduction into poultry holdings (USA, Germany, The  
139 Netherlands, United Kingdom, Italy). In some outbreaks, the source of infection was unknown or  
140 inconclusive (Japan, Hungary).

141

142 We reviewed FAO data (12) for 2011 to 2013 on export and import of live domestic ducks and  
143 chickens of affected countries to estimate the risk of spread of HPAI virus from South Korea to other  
144 countries via international poultry trade (**Table S7**). Data on the export of live poultry from North  
145 Korea and Mongolia, also in East Asia, were not available from FAO. Although all countries (Japan,  
146 Canada, USA, Germany, Netherlands, United Kingdom, Italy, Hungary) where HPAI H5N8 virus  
147 emerged between November 2014 and February 2015 imported live chickens and live domestic  
148 ducks in 2013, South Korea reported the export of a low number of live chickens and no export of live  
149 domestic ducks, although unreported cross-border trade cannot be excluded. Nevertheless, based on  
150 these data, it seems unlikely that international trade in live poultry played a major role in the long-  
151 distance spread of South Korean clade HPAI H5N8 virus during the winter of 2014/2015.

152

153 Our analysis, using four different sources of data, indicates that the main routes of large-scale  
154 geographical spread of HPAI H5N8 virus were most probably via long-distance flights of infected  
155 migratory wild birds, first in spring 2014 from South Korea or other unsampled locations in the region  
156 to northern breeding grounds, and then in autumn 2014 from these breeding grounds along migration  
157 routes to wintering sites in North America and Europe.

158

159 Recognition of a likely role of wild birds in the spread of HPAI reinforces the need to improve  
160 biosecurity on poultry farms and to exclude wild birds from the immediate vicinity of poultry farms.  
161 Culling wild birds, draining or disinfecting wetlands would not be effective because these viruses  
162 disseminate on rapid time scales over very large distances, making reactive interventions of this kind  
163 impractical and ineffective, as well as contravening commitments made by signatory countries to the  
164 Convention on Migratory Species and the Ramsar Convention on Wetlands.

165

166 The potential role of wild birds in the circumpolar circulation of influenza viruses does point to the  
167 need to increase our knowledge about the connectedness at the vast circumpolar (sub)arctic breeding  
168 areas between migratory waterfowl populations originating from different wintering areas. Surveillance  
169 of waterfowl at the crossroads of migratory flyways to wintering areas in Europe, Asia, and North  
170 America would inform epidemiological risk analysis and provide early warning of specific HPAI threats  
171 to poultry, and potentially human, health.

172

## 173 **References and Notes**

174

- 175 1. Y.-J. Lee *et al.*, Novel reassortant influenza A(H5N8) viruses, South Korea, 2014. *Emerg.*  
176 *Infect. Dis.* **20**, 1087–9 (2014).

- 177 2. D.-H. Lee *et al.*, Intercontinental Spread of Asian-Origin H5N8 to North America through  
178 Beringia by Migratory Birds. *J. Virol.* **89**, 6521–4 (2015).
- 179 3. J. H. Verhagen, S. Herfst, R. A. M. Fouchier, Infectious disease. How a virus travels the world.  
180 *Science.* **347**, 616–7 (2015).
- 181 4. M. Richard, M. de Graaf, S. Herfst, Avian influenza A viruses: from zoonosis to pandemic.  
182 *Future Virol.* **9**, 513–524 (2014).
- 183 5. X. Xu, Subbarao, N. J. Cox, Y. Guo, Genetic characterization of the pathogenic influenza  
184 A/Goose/Guangdong/1/96 (H5N1) virus: similarity of its hemagglutinin gene to those of H5N1  
185 viruses from the 1997 outbreaks in Hong Kong. *Virology.* **261**, 15–9 (1999).
- 186 6. B. Olsen *et al.*, Global patterns of influenza a virus in wild birds. *Science.* **312**, 384–8 (2006).
- 187 7. World Health Organization (WHO), Evolution of the influenza A(H5) haemagglutinin:  
188 WHO/OIE/FAO H5 Working Group reports a new clade designated 2.3.4.4, (available at  
189 [www.who.int/influenza/gisrs\\_laboratory/h5\\_nomenclature\\_clade2344/en/](http://www.who.int/influenza/gisrs_laboratory/h5_nomenclature_clade2344/en/)).
- 190 8. E. de Vries *et al.*, Rapid Emergence of Highly Pathogenic Avian Influenza Subtypes from a  
191 Subtype H5N1 Hemagglutinin Variant. *Emerg. Infect. Dis.* **21**, 842–6 (2015).
- 192 9. J. S. Hall, R. J. Dusek, E. Spackman, Rapidly Expanding Range of Highly Pathogenic Avian  
193 Influenza Viruses. *Emerg. Infect. Dis.* **21**, 1251–2 (2015).
- 194 10. S. C. Hill *et al.*, Wild waterfowl migration and domestic duck density shape the epidemiology of  
195 highly pathogenic H5N8 influenza in the Republic of Korea. *Infect. Genet. Evol.* **34**, 267–77  
196 (2015).
- 197 11. Materials and Methods are included in the Supplementary Materials.
- 198 12. Food and Agriculture Organization of the United Nations (FAO), FAOSTAT  
199 (<http://faostat3.fao.org>).
- 200 13. A. J. Drummond, M. A. Suchard, D. Xie, A. Rambaut, Bayesian phylogenetics with BEAUti and  
201 the BEAST 1.7. *Mol. Biol. Evol.* **29**, 1969–73 (2012).
- 202 14. P. Lemey, A. Rambaut, A. J. Drummond, M. A. Suchard, Bayesian phylogeography finds its  
203 roots. *PLoS Comput. Biol.* **5**, e1000520 (2009).
- 204 15. P. Lemey, A. Rambaut, J. J. Welch, M. A. Suchard, Phylogeography takes a relaxed random  
205 walk in continuous space and time. *Mol. Biol. Evol.* **27**, 1877–85 (2010).

206

## 207 **Acknowledgements**

208 This study was financially supported by the European Commission H2020 programme under contract  
209 number 643476 ([www.compare\\_europe.eu](http://www.compare_europe.eu)) (to A.P., J.B., A.B., I.B., M.P.K., A.R., R.A.M.F., M.B.,  
210 M.W., T.K.), the U. S. Geological Survey Ecosystems Mission Area (to H.S.I.), NIH grant number  
211 (1R01AI101028-02A1) (to M.G.), ESEI UrbanZoo programme (G1100783/1), BBSRC-ZELS ZooLink  
212 (BB/L019019/1) programme, and CGIAR Research Programme on Agriculture for Nutrition and  
213 Health (A4NH) (to T.P.R.), Canadian Food Inspection Agency (to J.P.), Hungarian Academy of  
214 Sciences Lendület (Momentum) program (to K.B.). SJL is supported by the University of Edinburgh  
215 Chancellor's Fellowship scheme, the Roslin Institute BBSRC strategic programme grant  
216 (BB/J004227/1) and the Centre of Expertise in Animal Disease Outbreaks (EPIC). We gratefully

217 acknowledge the authors, originating and submitting laboratories of the sequences from GISAID's  
218 EpiFlu™ Database on which this research is based. All contributors of data may be contacted directly  
219 via the GISAID website (www.gisaid). The accession numbers (Genbank, GISAID, and/or workset  
220 identification numbers) of all genetic sequences used in this study are provided in Table S9, and are  
221 accessible from the website of GISAID (www.gisaid). We acknowledge Yohannes Berhane and  
222 Tamiko Hisanaga for sequencing the Canadian virus isolates and Guus Koch for his technical advice  
223 on the poultry outbreaks in the Netherlands. The funders had no role in study design, data collection  
224 and interpretation, or the decision to submit the work for publication. Any use of trade products or firm  
225 names is for descriptive purposes and does not imply endorsement by the US government.

226

227 **The Global Consortium for H5N8 and Related Influenza Viruses:** Samantha J. Lycett,<sup>1\*</sup> Rogier  
228 Bodewes,<sup>2\*</sup> Anne Pohlmann,<sup>3</sup> Jill Banks,<sup>4</sup> Krisztián Bányai,<sup>5</sup> Maciej F. Boni,<sup>6,7</sup> Ruth Bouwstra,<sup>8,9</sup>  
229 Andrew C. Breed,<sup>10</sup> Ian H. Brown,<sup>4</sup> Hualan Chen,<sup>11</sup> Ádám Dán,<sup>12</sup> Thomas J. DeLiberto,<sup>13</sup> Nguyen  
230 Diep,<sup>7</sup> Marius Gilbert,<sup>14,15</sup> Sarah Hill,<sup>16</sup> Hon S. Ip,<sup>17</sup> Chang Wen Ke,<sup>18</sup> Hiroshi Kida,<sup>19</sup> Mary Lea  
231 Killian,<sup>20</sup> Marion P. Koopmans,<sup>21</sup> Jung-Hoon Kwon,<sup>22</sup> Dong-Hun Lee,<sup>23</sup> Joo Yeon Lee,<sup>24</sup> Lu Lu,<sup>25</sup>  
232 Isabella Monne,<sup>26</sup> John Pasick,<sup>27,28</sup> Oliver G. Pybus,<sup>16</sup> Andrew Rambaut,<sup>29</sup> Timothy P. Robinson,<sup>30</sup>  
233 Yoshihiro Sakoda,<sup>31</sup> Siamak Zohari,<sup>32</sup> Chang-Seon Song,<sup>21</sup> David E. Swayne,<sup>22</sup> Mia Kim Torchetti,<sup>19</sup>  
234 Hsiang-Jung Tsai,<sup>33</sup> Ron A.M. Fouchier,<sup>21</sup> Martin Beer,<sup>3</sup> Mark Woolhouse,<sup>29†</sup> Thijs Kuiken.<sup>21†</sup>

235

236 <sup>1</sup>The Roslin Institute, University of Edinburgh, Edinburgh EH25 9RG, UK. <sup>2</sup>Faculty of Veterinary  
237 Medicine, University of Utrecht, 3584 CL Utrecht, The Netherlands. <sup>3</sup>Institute of Diagnostic Virology,  
238 Friedrich Loeffler Institut, D-17493 Greifswald-Insel Riems, Germany. <sup>4</sup>Virology Department, Animal  
239 and Plant Health Agency, Woodham Lane, Addlestone KT15 3NB, UK. <sup>5</sup>Institute for Veterinary  
240 Medical Research, Centre for Agricultural Research, Hungarian Academy of Sciences, H1143  
241 Budapest, Hungary. <sup>6</sup>Centre for Tropical Medicine, Nuffield Department of Medicine, University of  
242 Oxford, Oxford OX3 7FZ, UK. <sup>7</sup>Oxford University Clinical Research Unit, Wellcome Trust Major  
243 Overseas Programme, Ho Chi Minh City, Vietnam. <sup>8</sup>Department of Virology, Central Veterinary  
244 Institute, Wageningen University and Research Centre, 8221 RA Lelystad, The Netherlands. <sup>9</sup>Current  
245 address: Animal Health Service, 7400 AA Deventer, The Netherlands. <sup>10</sup>Department of  
246 Epidemiological Sciences, Animal and Plant Health Agency, Woodham Lane, Addlestone KT15 3NB,  
247 UK. <sup>11</sup>Harbin Veterinary Research Institute, Chinese Academy of Agricultural Sciences, 150001  
248 Harbin, China. <sup>12</sup>Veterinary Diagnostic Directorate, National Food Chain Safety Office, H1149  
249 Budapest, Hungary. <sup>13</sup>National Wildlife Research Center, Wildlife Services, US Department of  
250 Agriculture, Fort Collins, CO 80521, USA. <sup>14</sup>Spatial Epidemiology Laboratory (SpELL), Université  
251 Libre de Bruxelles, B-1050 Brussels, Belgium. <sup>15</sup>Fonds National de la Recherche Scientifique, B-1000  
252 Brussels, Belgium. <sup>16</sup>Department of Zoology, University of Oxford, OX1 3PS Oxford, UK. <sup>17</sup>Wildlife  
253 Disease Diagnostic Laboratories Branch, National Wildlife Health Center, US Geological Survey,  
254 Madison, WI 53711, USA. <sup>18</sup>Institute of Microbiology, Center for Diseases Control and Prevention of

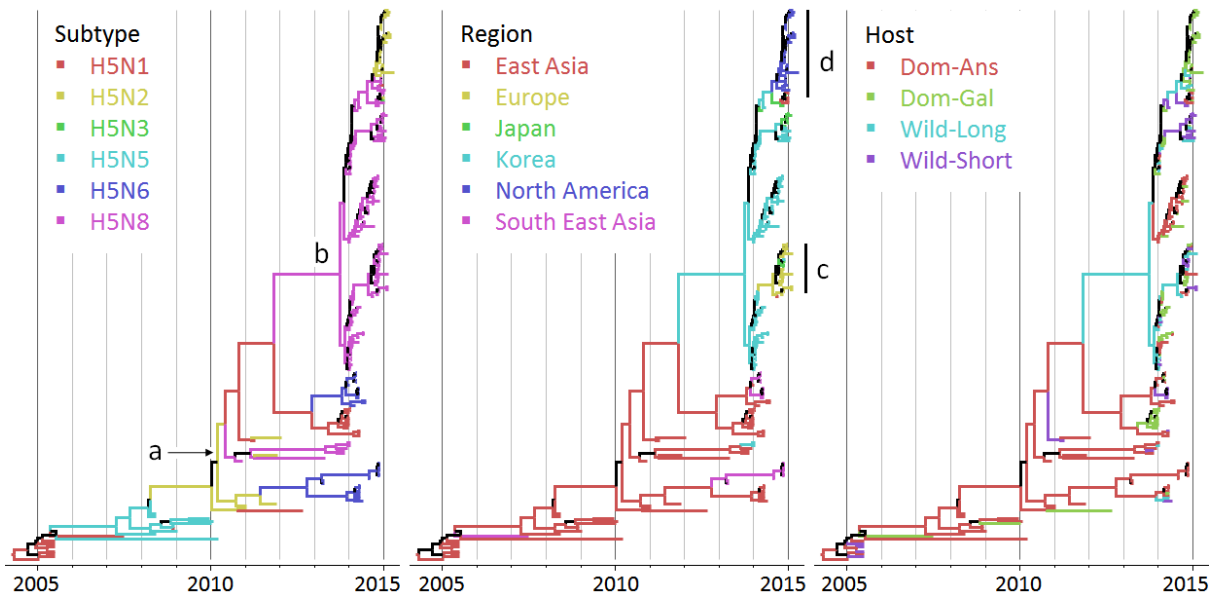
---

\* These authors contributed equally to this work.

† These authors contributed equally to this work.



255 Guangdong Province, 511430 Guangzhou, China. <sup>19</sup>Hiroshi Kida, Research Center for Zoonosis  
256 Control, Hokkaido University, Sapporo, Hokkaido 001-0020, Japan. <sup>20</sup>National Veterinary Services  
257 Laboratories, Veterinary Services, US Department of Agriculture, Ames, IA 50010, USA.  
258 <sup>21</sup>Department of Viroscience, Erasmus University Medical Center, 3015 CN Rotterdam, The  
259 Netherlands. <sup>22</sup>Avian Disease Laboratory, College of Veterinary Medicine, Konkuk University, Seoul  
260 143-701, Republic of Korea. <sup>23</sup>Southeast Poultry Research Laboratory, US Department of Agriculture,  
261 Athens, GA 30605, USA. <sup>24</sup>Division of Influenza Virus, Centers for Disease Control and Prevention,  
262 Cheongwon, Republic of Korea. <sup>25</sup>Institute of Evolutionary Biology, University of Edinburgh, Edinburgh  
263 EH9 3JT, UK. <sup>26</sup>Research and Innovation Department, Istituto Zooprofilattico Sperimentale delle  
264 Venezie, 10-35020 Legnaro (Padova), Italy. <sup>27</sup>National Centre for Foreign Animal Disease, Canadian  
265 Food Inspection Agency, Winnipeg, MB R3E 3M4, Canada. <sup>28</sup>Current address: Canadian Food  
266 Inspection Agency, Guelph, ON N1G 4S9, Canada. <sup>29</sup>Centre for Immunity, Infection and Evolution,  
267 University of Edinburgh, Edinburgh EH9 3FL, UK. <sup>30</sup>Livestock Systems and Environment (LSE),  
268 International Livestock Research Institute (ILRI), P.O. Box 30709, 00100 Nairobi, Kenya. <sup>31</sup>Graduate  
269 School of Veterinary Medicine, Hokkaido University, Sapporo, Hokkaido 060-0818, Japan.  
270 <sup>32</sup>Department of Virology, Immunobiology and Parasitology, National Veterinary Institute, SE-751 89  
271 Uppsala, Sweden. <sup>33</sup>Animal Health Research Institute, Council of Agriculture, New Taipei City 25158,  
272 Taiwan.  
273  
274



275

276

277

278

279

280

281

282

283

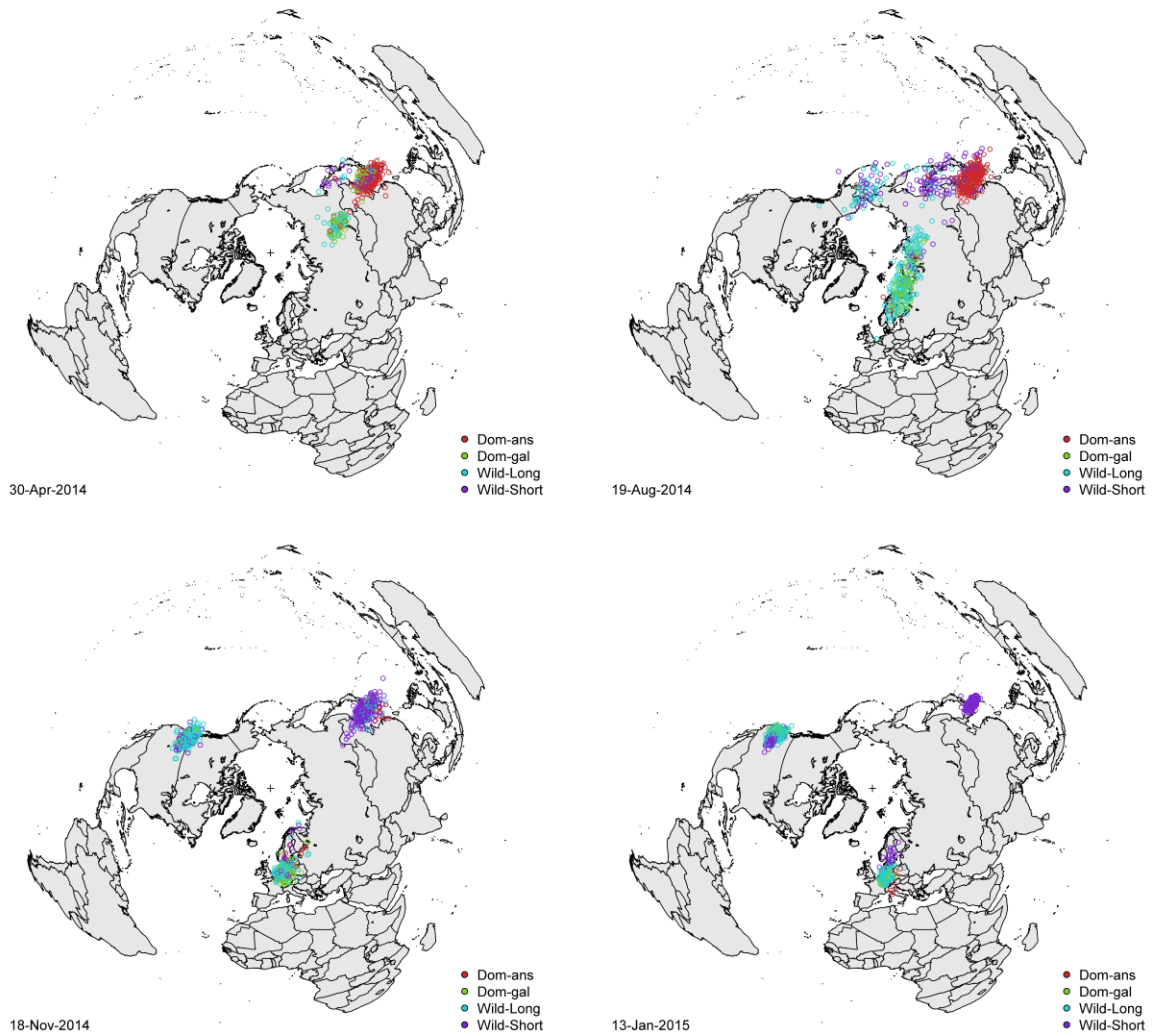
284

285

286

287

**Figure 1.** Maximum clade credibility (MCC) time scaled phylogenetic tree of multi-subtype HA sequences colored by subtype, region and host-type traits. The clades marked a and b contain H5N8 sequences, and c and d contain sequences from Europe and North America, respectively. The displayed MCC tree was obtained from a posterior set of trees inferred using BEAST (13) with the SRD06 nucleotide substitution model, uncorrelated relaxed clock model and constant population size tree prior. The branches are colored according to the most probable ancestral trait, and ancestral traits were inferred by a symmetric (subtype and region) or asymmetric discrete trait model (host-type) upon the posterior tree set (14). Host-types are Dom-Ans (red): domestic anseriform birds, Dom-Gal (green): domestic galliform birds, Wild-Long (blue): long-distance migratory wild birds, Wild-Short (purple): short-distance migratory wild birds.

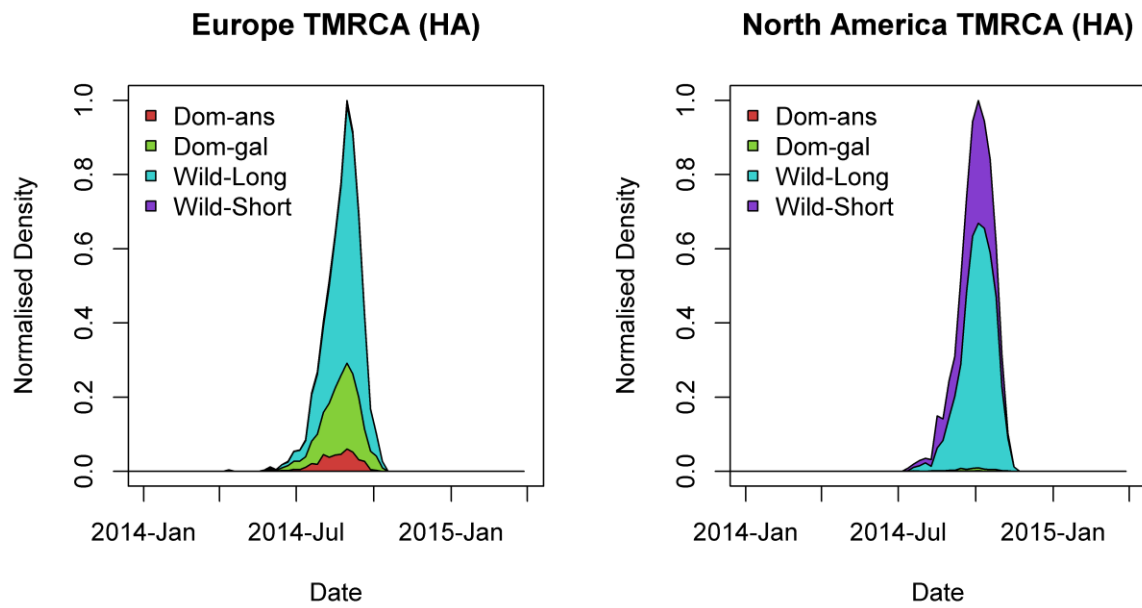


288

289 **Figure 2.** Reconstruction of the transmission route using phylogenetic data only from H5N8 HA  
 290 sequences. At each time slice, the host-type and location coordinates on the branches of the posterior  
 291 set of phylogenetic trees are inferred and plotted as a cloud of points. The host-type was inferred by  
 292 discrete trait model (as Figure 1) (14), and the continuous location coordinates were inferred using a  
 293 homogeneous Brownian motion diffusion model (15). The map projection used is the azimuthal  
 294 equidistant projection, centred on the North Pole, which is marked with a + sign. In this projection, all  
 295 points on the map are at proportionately correct distances and at the correct direction from the North  
 296 pole. Color key as for Fig. 1; see also Movie 1.

297

298



299

300 **Figure 3.** Posterior distributions of time to most recent common ancestor (TMRCA) of HA sequences  
 301 from Europe and North America with H5N8 subtype only, including Host type reconstructions, based  
 302 upon a posterior set of phylogenetic trees generated as in Fig 1. Color key as for Fig. 1.

303

304 **Supplementary Materials**

305 Materials and Methods

306 Figures S1-S6

307 Tables S1-S10

308 Movie S1

309 References 16-59