

## Forensic analysis of spanish 2015 and 2016 national elections

Fernández-Gracia, J; Lacasa, L

<https://arxiv.org/abs/1607.02841>

For additional information about this publication click this link.

<http://qmro.qmul.ac.uk/xmlui/handle/123456789/15783>

Information about this research object was correct at the time of download; we occasionally make corrections to records, please therefore check the published record when citing. For more information contact [scholarlycommunications@qmul.ac.uk](mailto:scholarlycommunications@qmul.ac.uk)

# Forensic analysis of spanish 2015 and 2016 national elections

Juan Fernández-Gracia<sup>1,\*</sup> and Lucas Lacasa<sup>2,†</sup>

<sup>1</sup>*Harvard T.H. Chan School of Public Health, Harvard University, 677 Huntington Ave, Boston, MA 02115 (USA)*

<sup>2</sup>*School of Mathematical Sciences, Queen Mary University of London, Mile End Road E14NS London (UK)*

(Dated: July 12, 2016)

In this paper we present a forensic analysis of the vote counts of spanish national elections that took place in December 2015 and their sequel in June 2016. Vote counts are extracted at the level of municipalities, yielding an unusually high resolution dataset with over 8000 samples. We address the frequencies of the first and second significant digits in vote counts and explore the conformance of these distributions at three different levels of aggregation to Benford's law for each of the main political parties. The results and interpretations are mixed and vary across different levels of aggregation, finding a general good quantitative agreement at the national scale for both municipalities and precincts but finding systematic nonconformance at the level of individual precincts. We further explore the co-occurring statistics of voteshare and turnout, finding a mild tendency in the clusters of the conservative party to smear out towards the area of high turnout and voteshare, what has been previously interpreted as a possible sign of incremental fraud. In every case results are qualitatively similar between 2015 and 2016 elections.

## I. INTRODUCTION AND DATASETS

In the last decade and in parallel with the improvement of computational resources and the possibility of accessing, storing and manipulating massive digital records easily, the political science community has engaged with the task of producing quantitative and systematic methods to detect irregularities in electoral results [1]. In this work we analyze the vote count statistics obtained in the spanish national elections that took place in December 2015 as well as in their sequel of June 2016. Since the end of 2014, the emergence of new parties such as the anti-austerity Podemos and the rise of other ones such as Ciudadanos (C's) challenged an already decadent bipartidist system, as was evidenced by the highly fragmented total voteshare in 2015. These results further defined a new type of political equilibrium in Spain, where the quest for alliances across parties was required to form a workable majority. Unfortunately this situation was not achieved and the parliament was unable to build the necessary coalitions to make a workable majority, what triggered the onset of new elections only six months after the previous ones, in June 2016. These special and unique conditions, together with the fact that the polls and electoral surveys preceding and on the day of the elections showed an unusually high discrepancy with the actual results motivates the use of some of the recently developed techniques for elections forensic analysis to scrutinize any source of irregularity in these elections.

High resolution vote count data (at several levels of aggregation down to the level of municipalities) have been extracted from the official webpage of the Ministerio Del Interior [2] (spanish ministry of home affairs) for both 2015 and 2016 elections. For concreteness we have focused on vote counts on congress and discarded senate (see Fig. 1 for a guide of the type of data available from the ministry of home affairs website).

In this work we have considered two different approaches. The first study addresses the deviation or conformance of vote counts statistics to the so-called Benford's law [6, 9] that predicts that the first significant digits in some datasets (including vote counts) should follow an inverse-logarithmic distribution. The rationale for this analysis is that statistically significant deviations between the empirical distribution and the theoretical one point us toward electoral irregularities. These irregularities might in turn be due either to unintentional mismanagement of the voting process and/or to fraud. This type of analysis only flags the existence of such irregularities and gives no judgment on what was the cause for such irregularity. To complement this study, we then explore the presence and detection of sources of incremental and extreme fraud from the co-occurring statistics of vote and turnout numbers, following a recent study [12].

The rest of the paper goes as follows: in section II we introduce Benford's law along with the precise types of statistical tests that have been proposed in the realm of election forensics, and we present the results obtained from these tests for both the December 2015 and June 2016 elections at three different levels of aggregation. The main results and

---

\*Electronic address: jfernand@hsph.harvard.edu

†Electronic address: l.lacasa@qmul.ac.uk



Datos de las 00:15 del 27 de junio de 2016  
Escrutado 100%

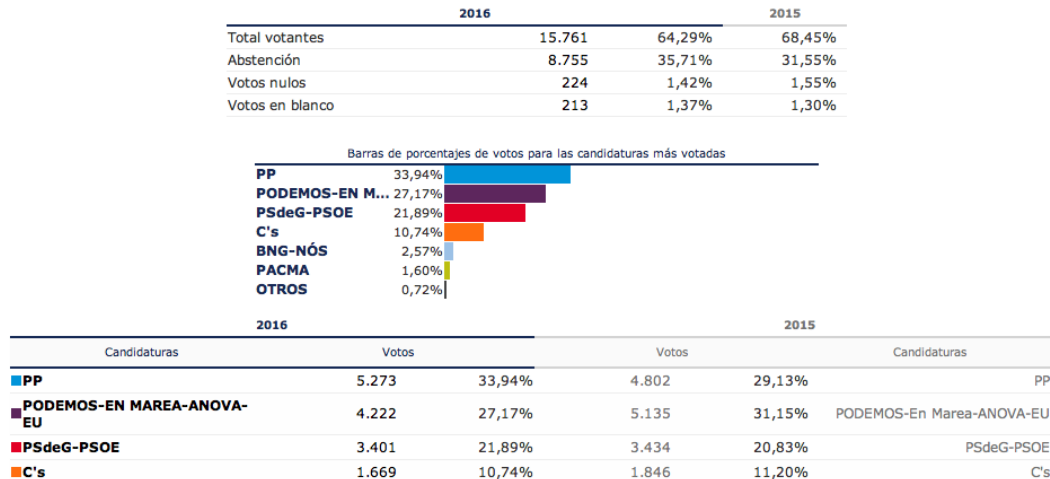


FIG. 1: Sample municipality (Arteixo) along with vote count statistics, as reported in the Ministerio del Interior official webpage [2].

interpretations on this first study are reported in this section and additional material and analysis are shown in an appendix. In section III we present the second study that addresses the co-occurring statistics of vote and turnout numbers. Finally, in section IV we provide some discussion and conclude.

## II. BENFORD'S LAW

The first significant digit (or leading digit) of a number is defined as its non-zero leftmost digit (for instance the leading digit of 123 is 1 whereas the leading digit of 0.025 is 2). The so-called Benford's law is an empirical statistical law stating that in particular types of numeric datasets the probability of finding an entry whose first significant digit is  $d$  decays logarithmically as

$$P(d) = \log_{10}(1 + 1/d), \quad (1)$$

where  $\log_{10}$  stands here for the decimal logarithm (note that trivially  $\sum_{d=1}^9 P(d) = 1$ ). Perhaps counterintuitively, this law is quite different from the expected distribution arising from an uncorrelated random process (e.g. coin tossing or extracting numbers at random from an urn) which would yield a uniform distribution where every leading digit would be equally likely to appear. The logarithmically decaying shape given in eq.1 was empirically found first in 1881 by astronomer Simon Newcomb and later popularized and exhaustively studied by Frank Benford [3]. Empirical datasets that comply to Benford's law emerge in as disparate places as for stock prizes or physical constants, and some mathematical sequences such as binomial arrays or some geometric sequences have been shown to conform to Benford. A possible origin of this law has been rigorously explained by Hill [4], who proved a central limit-type theorem by which random entries picked from random distributions form a sequence whose leading digit distribution converges to Benford's law. Another explanation comes from the theory of multiplicative processes, as it is well known that power-law distributed stochastic processes follow Benford's law for the specific case of a density  $1/x$  (see [5] and references therein for details). In practice, this law is expected to emerge in a range of empirical datasets where part or all of the following criteria hold: (i) the data ranges a broad interval encompassing several orders of magnitude rather uniformly, (ii) the data are the outcome of different random processes with different probability densities, (iii) the data are the result of one or several multiplicative processes.

Mainly advocated by Nigrini [6], the application of Benford's law to detect fraud and irregularities -by observing anomalous and statistically significant deviations from eq.1 for datasets which otherwise should conform to that distribution- has become popular in recent years, and from now on we quote this a 1BL test. Mansilla [7] and Roukema [8] applied this methodology to assess Mexican and Iranian vote count results respectively. On the other hand, Mebane [9] advocates instead to look at the second significant digit (which follows an extended version of

Benford's law [10]) and argues that the frequencies of election vote counts at precinct level approximate a Benford distribution for the second digit, and accordingly mismanaged or fraudulent manipulation of vote counts would induce a statistically significant deviation in the distribution of the second leading digit, detected by a simple Pearson  $\chi^2$  goodness of fit test. Mebane applied this so-called 2BL test to assess the cases of Florida 2004 and Mexico 2006, and other authors have subsequently applied this in many other occasions (see [11] and references therein). In this case the theoretical distribution takes a more convoluted shape than eq.1, namely

$$P_2(d) = \sum_{k=1}^9 \log_{10} \left( 1 + \frac{1}{10k + d} \right), \quad (2)$$

and a good numerical approximation [10, 11] is given by

$$P_2(d) \simeq (0.11968, 0.11389, 0.10882, 0.10433, 0.10031, 0.09668, 0.09337, 0.09035, 0.08757, 0.08500).$$

We start by exploring 1BL and 2BL tests applied to vote count statistics nationally using the fine-grained data given by splitting vote counts at the level of municipalities (with over 8000 samples, vote counts ranging in about five orders of magnitude). Results for the 1BL are shown in the left panels of Fig. 2 (left panel depicts results for the 2015 elections while the right panel does the same for the 2016 case). As expected the distributions seem to be close to Benford's law for all political parties, at least visually, and there are no obvious differences between 2015 and 2016. To have a better quantitative understanding, we have made use of two statistics: (i) the classical Pearson's  $\chi^2$  and (ii) the mean absolute deviation (MAD) test as proposed by Nigrini [6]. In both cases the null hypothesis  $H_0$  is that data conform to Benford's law. The former statistic reads

$$\chi^2 = N \sum_{d=m}^9 \frac{[P_{\text{obs}}(d) - P_{\text{th}}(d)]^2}{P_{\text{th}}(d)},$$

where  $P_{\text{th}}(d)$  and  $P_{\text{obs}}(d)$  are the theoretical and observed relative frequencies of each digit and  $m = 1$  for 1BL and  $m = 0$  for 2BL. This statistic has 8 degrees of freedom for 1BL and 9 for 2BL (as in this latter case the digit zero has to be incorporated as a candidate) and is to be compared to certain critical values, such that if  $\chi^2 > \chi_{n,a}^2$  then  $H_0$  is rejected with the selected level of confidence level  $a$ . For  $n = 8$  degrees of freedom, the critical values at the 95% and 99% are 15.507 and 20.090 respectively, whereas for  $n = 9$  degrees of freedom the critical values at the 95% and 99% are 16.919 and 21.666 respectively.

The mean absolute deviation is defined as

$$\text{MAD} = \frac{1}{10 - m} \sum_{d=m}^9 |P_{\text{obs}}(d) - P_{\text{th}}(d)|,$$

where  $m$  is the initial digit (1 for 1BL, 0 for 2BL). Whereas this statistic lacks clear cut-off values, Nigrini provides the following rule of thumb for 1BL: MAD between 0 and 0.004 implies close conformity; from 0.004 to 0.008 acceptable conformity; from 0.008 to 0.012 marginally acceptable conformity; and, finally, greater than 0.012, nonconformity. To the best of our knowledge, the critical values for MAD have not yet been established for 2BL so all over this work we will assume the same ones as for 1BL.

Results for 1BL can be found in table I. We conclude that for the Pearson  $\chi^2$  test,  $H_0$  cannot be rejected with sufficiently high confidence in three out of the four main political parties but the  $\chi^2$  result for PP is consistently large and suggests rejection of the null hypothesis with a confidence of 99%. These results are in contrast with those found using the MAD statistic, where according to Nigrini all political parties conform to Benford's law (PP only showing acceptable conformity and the rest showing close conformity).

The results on 2BL are shown in the right panels of Fig. 2 and test statistics are summarized again in table I. These suggest an overall conformance to the second digit law, with exception flagging nonconformance raised by  $\chi^2$  that rejects  $H_0$  at 95% for Podemos (2015), Unidos-Podemos (2016) and PSOE (2015).

### A. Individual analysis at the precincts level

In order to give a closer look to the vote count distributions we now explore the statistics taking place at each separate precinct. At this point we need to recall that among other criteria Benford's law is expected to emerge

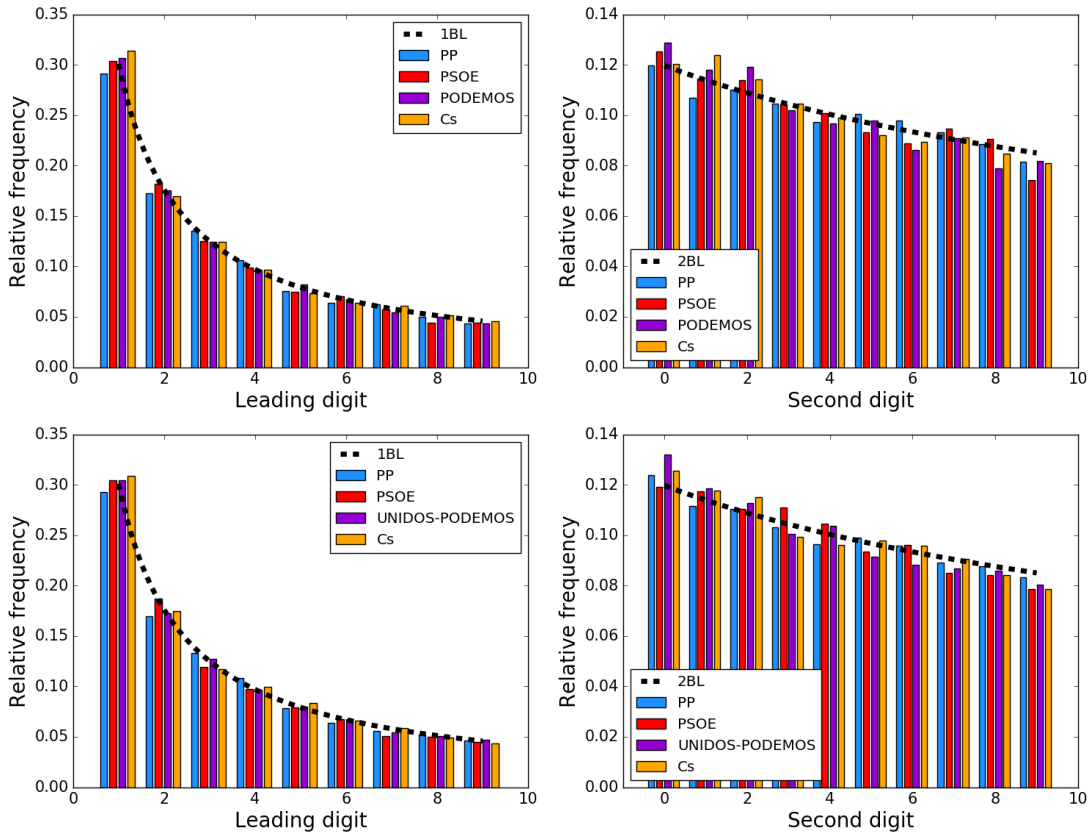


FIG. 2: Histograms of relative frequencies for the first (left panels) and second (right panels) significant digits of the four most important political parties vote counts over municipalities (more than 8000 in each case) for the 2015 (upper panels) and 2016 (bottom panels) elections

Year	Political party	# observations	$\chi^2$ 1BL	MAD 1BL	$\chi^2$ 2BL	MAD 2BL
2015	PP	8182	23.079	0.0052	8.737	0.0027
2016	PP	8186	21.408	0.0046	4.142	0.0021
2015	PSOE	8135	13.486	0.0030	17.648	0.0038
2016	PSOE	8121	15.040	0.0033	13.065	0.0038
2015	Podemos & Co.	7927	4.845	0.0020	21.329	0.0050
2016	Unidos Podemos	8056	3.537	0.0019	18.314	0.0048
2015	C's	8037	11.933	0.0036	10.934	0.0034
2016	C's	8001	9.671	0.0033	10.951	0.0039

TABLE I: Statistical tests of conformance to Benford's law for the first (1BL) and second (2BL) significant digit distribution for the vote counts of each political party (at the level of municipalities), along with  $\chi^2$  and MAD statistics. In blue we highlight the datasets where the null hypothesis can be rejected with 95% confidence but not with 99% and in red cases for which where the null hypothesis can be rejected with more than 99% confidence according to  $\chi^2$ . On the basis of MAD statistic the null hypothesis of conformance to Benford's laws cannot be rejected for any case.

in datasets where data range several orders of magnitude. This hypothesis was fulfilled at the national scale as the population of municipalities ranges several orders of magnitude ( $\mathcal{O}(1) - \mathcal{O}(10^5)$ , see Table IV) if we consider all of them. However this is not straightforward at the precinct level, where the number of municipalities is highly heterogeneous from precinct to precinct. In Fig. 14 (appendix) we have checked that the number of orders of magnitude that vote counts span at the precinct level is indeed linearly correlated with the number of municipalities the precinct contains ( $R^2 = 0.47$ ). This means that the larger the number of municipalities considered in a single analysis, the more we should expect data to conform to Benford's law.

That being said, for each and every precinct in Spain we proceed to extract the frequencies of the first and second significant digits found for all the municipalities inside that precinct, and make a goodness of fit test between these empirical distributions and 1BL and 2BL using both  $\chi^2$  and MAD statistics. Results on 1BL are summarized for

Year	Political party	test	$\chi^2$	MAD
2015	PP	1BL	12.71	0.0455
2016	PP	1BL	7.13	0.0329
2015	PP	2BL	7.79	0.0325
2016	PP	2BL	7.43	0.0333
2015	PSOE	1BL	3.78	0.02628
2016	PSOE	1BL	2.90	0.0220
2015	PSOE	2BL	20.90	0.0541
2016	PSOE	2BL	4.15	0.0222
2015	Podemos & Co.	1BL	4.45	0.02638
2016	Unidos Podemos	1BL	7.09	0.0344
2015	Podemos & Co.	2BL	3.29	0.0168
2016	Unidos Podemos	2BL	8.46	0.0359
2015	C's	1BL	4.81	0.02433
2016	C's	1BL	5.24	0.0270
2015	C's	2BL	15.39	0.0474
2016	C's	2BL	8.86	0.0289

TABLE II:  $\chi^2$  values of conformance to 1BL and 2BL for each political party extracted from the analysis performed when we aggregate votes at the precinct level.

the case of  $\chi^2$  in the left panels of 3 and in the appendix Fig. 9, finding an overall good conformance to 1BL at the precinct level. Conversely, MAD statistics (Fig. 8 in the appendix) say just the opposite, suggesting systematic non-conformance. As for the 2BL test, there exists a strong deviation from the expected distribution (right panels of Fig. 3 for  $\chi^2$  and appendix Fig.8 for MAD), and both statistics consistently reject the null hypothesis of conformance to Benford's law for all political parties.

Now, note that at each individual precinct we expect statistics to be a priori poorer than at the national scale, as the average number of municipalities per precinct is of the order of  $\mathcal{O}(10^2)$  (see table IV for details), that is, one order of magnitude smaller. As MAD does not include any correction term that depends on the sample set, one should therefore take the results associated to MAD with a pinch of salt. This is not necessarily the case for the  $\chi^2$  as this latter statistic takes into account in its definition the number of samples. In any case, in order to assess whether the strong nonconformance to 2BL at this level of aggregation is just due to finite size effects we explore the dependence of both the  $\chi^2$  and MAD results on the precinct's size. Accordingly, in Fig. 4 we plot for each precinct its  $\chi^2$  and MAD result as a function of the number of municipalities present in that precinct. As expected, we find that MAD suffers from finite size effects and is over conservative for small sample sizes, however this effect is rather weak and not enough to explain the systematic nonconformance to 2BL. In the case of the  $\chi^2$  statistic we observe quite the opposite effect: the larger the number of municipalities in a given precinct, the more likely the null hypothesis to be rejected. An equivalent size dependence analysis for the 1BL test is reported in the appendix Fig. 13.

### B. Aggregate analysis at the precincts level

To round off our analysis with a third level of aggregation, we explore conformance to 1BL and 2BL when vote counts are aggregated per precinct. In this case we only have 52 samples (52 precincts) so we expect the distributions to be more noisy. From the previous analysis, we learned that MAD suffers from finite size effects so we expect MAD to be more conservative than  $\chi^2$  at this level of aggregation. In Fig. 5 we show the results for 2016 and we refer the readers to the appendix Fig. 15 to find analogous results for 2015, which don't show substantial differences at the qualitative level. As expected the distributions show larger fluctuations and, in absolute terms, deviate more from the theoretical laws (depicted in dashed lines). In table II we depict the  $\chi^2$  and MAD statistics, which, again as expected, show inconsistent results: while  $\chi^2$  systematically cannot be rejected with above 95% confidence level, in turn MAD systematically suggests nonconformity. We conclude that this level of aggregation is less informative than previous ones.

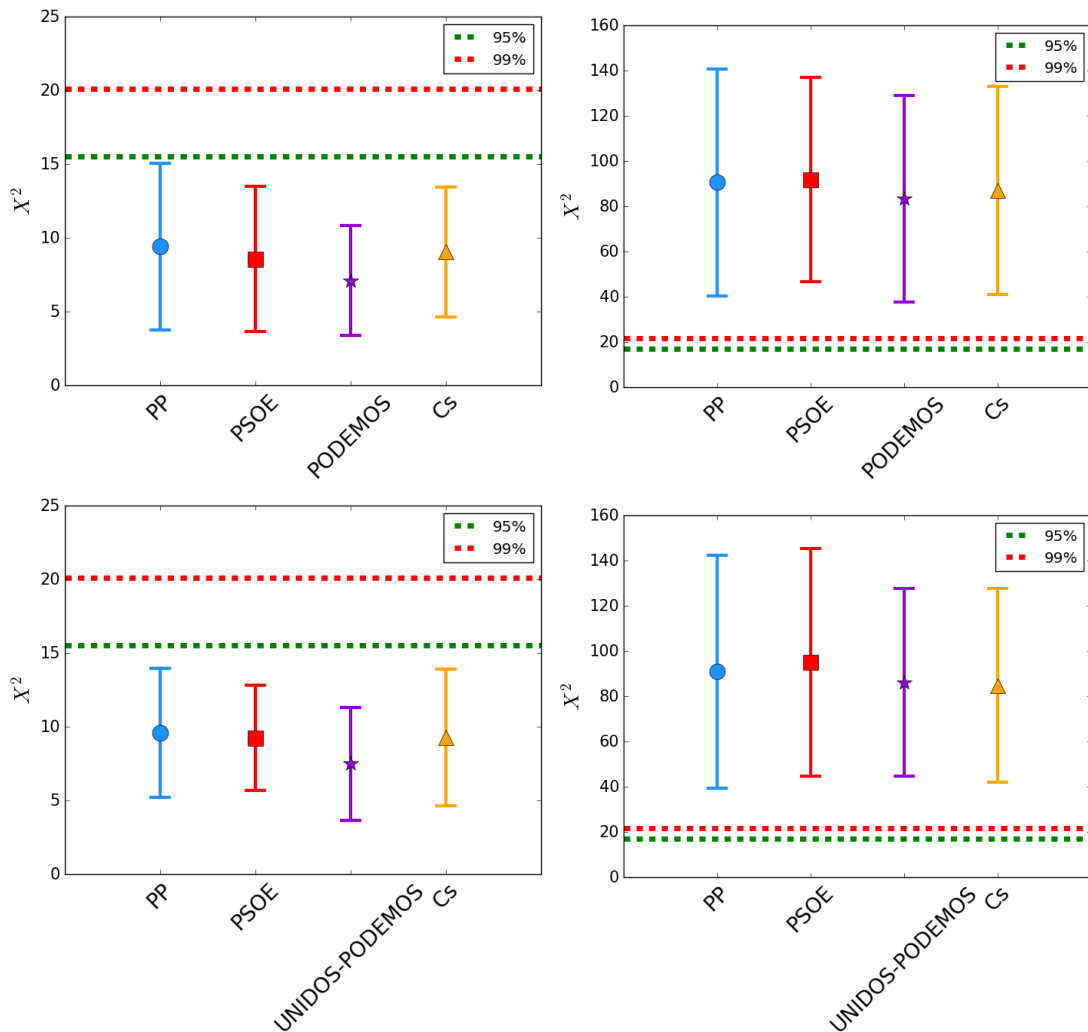


FIG. 3: Summary of Pearson  $\chi^2$  goodness of fit to 1BL (left panels) and 2BL (right panels) for 2015 (upper panels) and 2016 (bottom panels) extracted from analysis of each individual precinct (each precinct contains a different number of municipalities and shows a precise distribution and an associated  $\chi^2$ , so here we plot the mean  $\pm$  standard deviation over all spanish precincts (excluding Ceuta and Melilla, precincts with a single municipality) for the main parties. In every case the critical values for rejection at the 95 and 99% confidence level are shown. Interestingly, in the case of 1BL for a large majority we accept conformance to Benford’s law, whereas in the case of 2BL for a large majority the null hypothesis is rejected. Results based on MAD suggest that neither 1BL nor 2BL is accepted (Fig. 8 in the appendix).

### III. HEAT MAPS

Our second analysis is inspired by a recent study [12] that explore the co-occurring statistics of vote and turnout numbers and the associated double mechanism of incremental and extreme fraud by plotting two dimensional histograms (heat maps) reporting, for a given political party, the percentage of vote (voteshare) it got as compared to the percentage of participation. According to Klimek and co-authors, incremental fraud occurs when with a given rate, ballots for one party are added to the urn and/or votes for other parties are taken away, and this mechanism is revealed when the histograms smear out towards the top right corner of the histograms. On the other hand, extreme fraud (which corresponds to reporting a complete turnout and almost all votes for a single party) emerges when the distribution transitions from unimodal to bimodal and one of the modes corresponding to a cluster that concentrates close to that corner of 100% participation (complete turnout) and very large vote percentage. They applied these statistical principles to several national elections, concluding that in the cases of Russia and Uganda fraudulent manipulation was the most likely underlying mechanism. In Fig. 6 we plot such heat maps for the 2016 case for all four political parties. Data for PSOE, Unidos-Podemos and C’s do not show any sign of fraudulent manipulation. In the

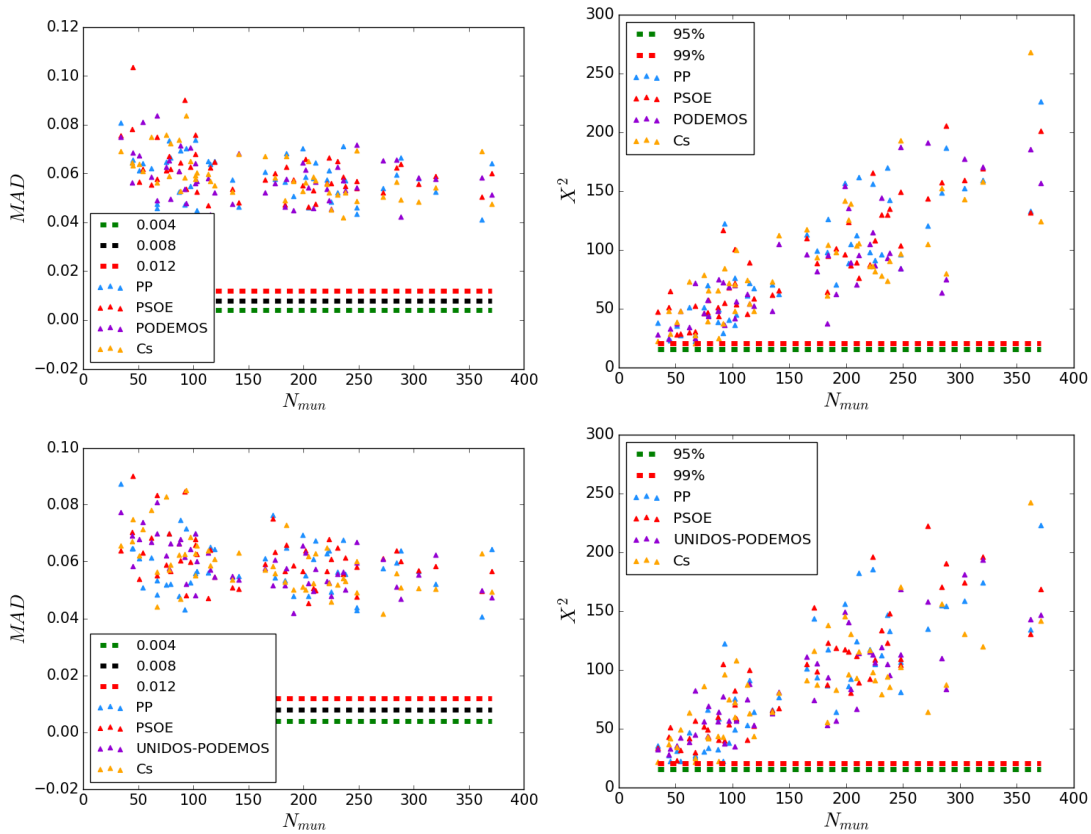


FIG. 4: Scatter plot of the MAD (left panels) and  $\chi^2$  (right panels) statistics extracted from the 2BL test of each precinct as a function of the number of municipalities in each precinct (2015 results are shown in the top panels and 2016 ones are shown in the bottom panels, with no obvious differences). In the case of MAD, we find a weak negative correlation as expected, but this correlation is not enough to explain the systematic nonconformance to 2BL. In the case of  $\chi^2$ , the effect is quite the opposite, and nonconformance is stronger as the size of the precinct increases, thereby suggesting that nonconformance to 2BL at this level of aggregation is a genuine result and not a spurious effect of finite size statistics.

case of PP results are less clear, as there indeed exists a (rather weak) tendency of the data to smear out towards the top right corner (results for 2015 are very similar and have been reported in appendix Fig. 16). We don't find any sign of systematic extreme fraud, although it is worth stating that we have found a small subset of municipalities with complete turnout which without exception gather very large percentage of votes towards the same party (PP, table III). Nevertheless a closer inspection reveals that these municipalities are extremely small and thus total turnout and large voteshare (or even consensus) in one political option is not strange.

A further interesting peculiarity for the case of the conservative party PP is the existence of two clusters of municipalities (bimodal distribution) that gathers two different voting strategies: one relatively small, located at small voteshare and the other one at high voteshare, which is more spread out (we don't observe bimodality for the rest of political parties). We have labeled municipalities according to which cluster they belong (assigning a brown label for the larger cluster and a turquoise label for the smaller one) and plotted them in Fig. 7. Just by visual inspection we can appreciate that the category linked with the smaller cluster is mainly formed by Catalonia and the Basque Country (regions with pro-independence aspirations and a strong nationalist tradition) and some further municipalities in regions that have been considered PSOE strongholds historically.

#### IV. DISCUSSION

In this work we have studied the statistical properties of vote counts in the Spanish national elections that took place in December 2015 and June 2016, focusing on already established methods for election forensics. For the 2016 case, the unusually high discrepancy found between electoral surveys preceding and on the day of the elections (26th June) and the actual electoral results have been a source of debate and controversy in Spanish media. To the



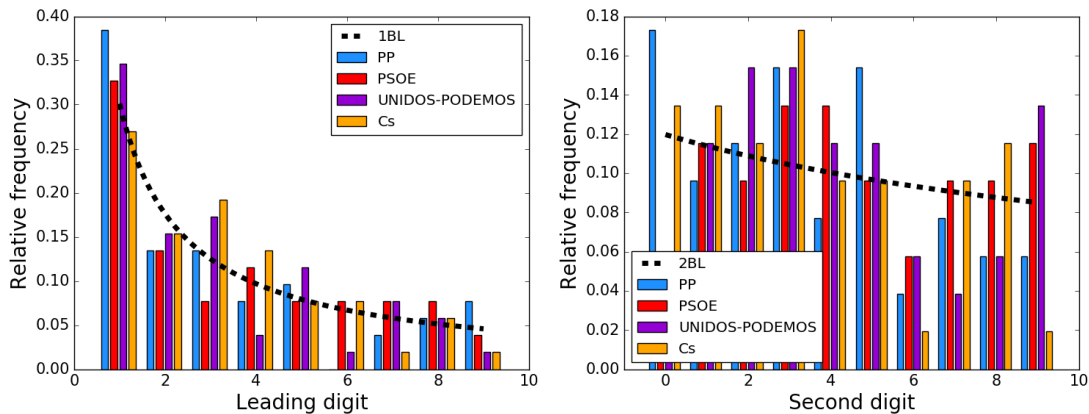


FIG. 5: Histograms of relative frequencies for the first (left panel) and second (right panel) significant digits for the main political parties vote counts aggregated over precincts, for the case of 2016 (2015 is shown in appendix Fig. 15)

Year	Municipality	Population	Political party
2015	Castilnuevo (Guadalajara)	7	PP
2015	Valdemadera (La Rioja)	7	PP
2016	Castilnuevo (Guadalajara)	7	PP
2016	Rebollosa de Jadraque (Guadalajara)	9	PP
2016	Congostrina (Guadalajara)	10	PP
2016	La Vid de Bureba (Burgos)	11	PP
2016	Portillo de Soria (Soria)	12	PP
2016	Valdemadera (La Rioja)	7	PP

TABLE III: List of municipalities with complete turnout where a single party got 100% of the votes.

best of our knowledge, this work constitutes the first systematic analysis of its kind for Spanish elections. The first and general conclusion we have extracted is that the voting distributions don't show any systematic and significant change between the 2015 and the 2016 elections, as all statistical results are qualitatively identical. This is in line with the original analysts' thesis that were discussed soon after it was learned that Spain had to go into a second election given the inability of the parliament to find a suitable coalition, but at odds with most of the polls and surveys of vote intention which were predicting a much different scenario as 26th June approached.

The first analysis is based on the hypothesis that under clean conditions, vote count data should conform to Benford's law. At the national scale we have found a general good qualitative and quantitative conformance to Benford's law for the first (1BL) and second (2BL) digits, with small deviations only occurring for 1BL in the conservative party, where the null hypothesis can be rejected at 99% confidence in both years according to the standard Pearson  $\chi^2$  hypothesis test, a result which is not confirmed using an alternative test (mean absolute deviation) proposed by Nigrini. For 2BL only  $\chi^2$  flags up some concerns at the 95% confidence level for Podemos / Unidos-Podemos, but the null hypothesis cannot be rejected at 99% and again in this case, MAD statistic is less conservative and accepts the null hypothesis for every party.

If we change the resolution and explore results for each individual precinct, results show a completely different story: conformance to 1BL is accepted according to  $\chi^2$  but systematically rejected according to MAD, and conformance to 2BL is consistently rejected according to both  $\chi^2$  and MAD statistics for every precinct and every political party. We have also shown that these are genuine results that cannot be associated to a lack of statistics. Finally, by aggregating vote counts per precinct and analyzing conformance to 1BL and 2BL at this level of aggregation, we obtain inconsistent and therefore inconclusive results, as  $\chi^2$  cannot reject the null hypothesis above 95% confidence level systematically but conversely MAD suggests systematic nonconformance. This lack of consistency raises the question about what level of aggregation might be better-suited for BL-type analysis and which statistic is more reliable when assessing the goodness of fit, issues that certainly deserve further investigation.

Given the somewhat mixed results and acknowledging that the applicability of Benford's law tests to election forensic is not completely free from controversy [13, 14], as a complementary analysis we have further explored the correlations between percentage of participation and percentage of votes for each municipality, plotting two-dimensional histograms to detect the presence of so-called incremental and/or extreme fraud as described by Klimek et al. [12]. Our results suggest that the results for PSOE, Unidos-Podemos and C's are apparently free from these mechanisms

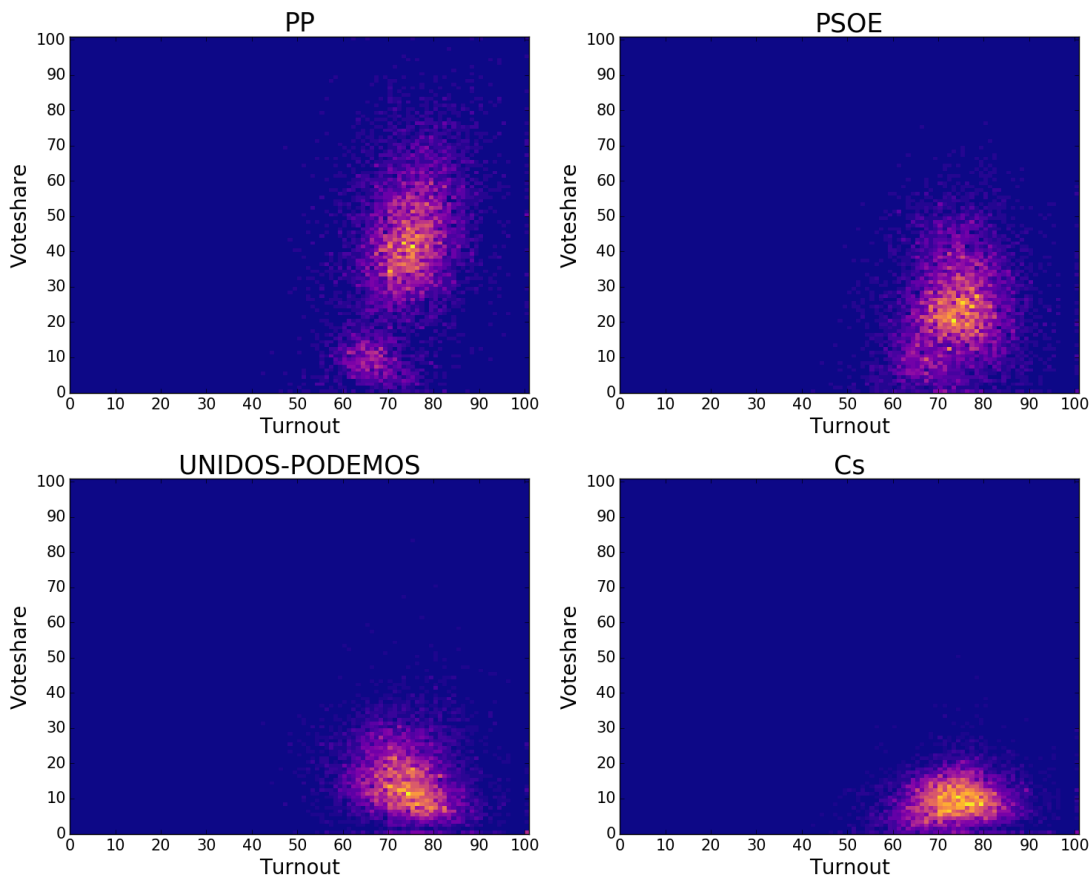


FIG. 6: Heatmaps plotting the percentage (in color scale) of municipalities where a given political party has received a certain percentage of votes, as a function of the relative participation. These are results from the 2016 elections, the 2015 case is reported in Fig.16. According to Klimek et al. [12] a smear out of the cluster towards the top-right corner of the heat map is a sign of incremental fraud, whereas extreme fraud would occur for bimodal distributions where a cluster emerges at the top-right corner.

whereas in the case of PP we find a weak evidence of cluster smearing out similarly to what Klimek et al. refer to incremental fraud, an evidence which needs to be studied in more detail. The heat map of the conservative party also shows two clusters instead of a single one hence bimodality in the voteshare tendency: there exist two different groups of municipalities, including a small one where the tendency is to give a small voteshare to PP and a larger one where the voteshare takes larger values. Interestingly, according to a spatial analysis we have been able to confirm that the low voteshare cluster typically corresponds to regions which are considered nationalist (Catalonia, Basque Country) where the strength of regional options outperforms those that prevail at a nationwide scale.

All in all, these results suggest that further investigations and enquiries should be conducted in order to confirm and clarify the presence or absence of some of these apparent irregularities, to elucidate their source and quantify their impact in election results. On this respect, systematic comparative studies with historical spanish data and analogous data (analysis at different levels of aggregation) from other similar democratic countries are needed.

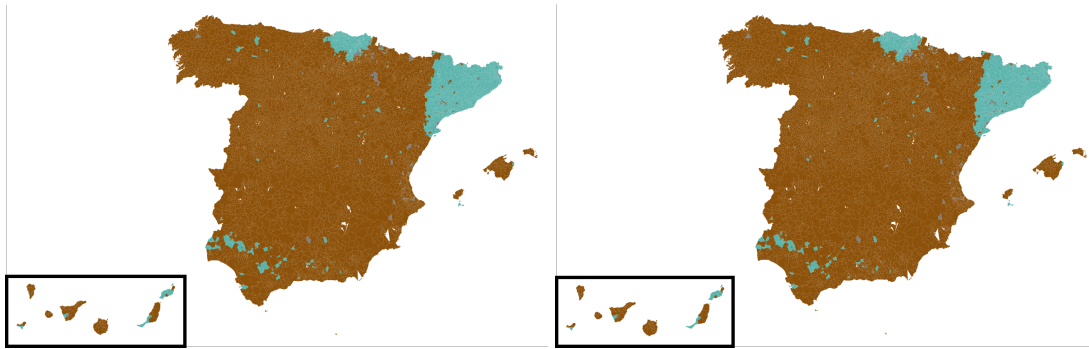


FIG. 7: Focusing on the bimodal distribution for the conservative party that emerges in the heat map of Fig. 6, here we show in a spatial map of Spain where we assign a brown color to those municipalities that belong to the larger cluster (high voteshare) and a turquoise color to those that belong to the smaller cluster (low voteshare). We find that the low voteshare cluster are predominantly linked with Catalunya and the Basque Country, the two areas of Spain with some independentist aspirations. No obvious change is perceived between 2015 and 2016

### Acknowledgments

We thank M.Antonia Tugores for her helpful assistance in the data gathering process.

- 
- [1] R.M. Alvarez, T.E. Hall, S.D. Hyde, *Election Fraud: Detecting and Deterring Electoral Manipulation* (Brookings Institution Press, Washington, D.C, 2008)
  - [2] <http://www.interior.gob.es/informacion-electoral>
  - [3] F. Benford, The law of anomalous numbers. *Proc. Am. Philos. Soc.* 78 (1938), pp.551-572.
  - [4] T.P. Hill, A statistical derivation of the significant-digit law, *Stat. Sci.* 10 (1995) pp.354-363.
  - [5] B. Luque and L. Lacasa, The first digits of prime numbers and Riemann zeta zeros, *Proc. Roy. Soc. A* 465 (2009) pp.2197-2216.
  - [6] M.J. Nigrini, *Benford's Law: Applications for Forensic Accounting, Auditing, and Fraud Detection* (John Wiley & Sons, 2012).
  - [7] R. Mansilla, Analisis de los resultados electorales a partir de la ley de Benford, <http://www.fisica.unam.mx/octavio>.
  - [8] B.F. Roukema, Benford's Law Anomalies in the 2009 Iranian Election. Torun Centre for Astronomy: Nicolaus Copernicus University (2009).
  - [9] Election Forensics: Vote Counts and Benford's Law (Political Methodology Society, University of California, Davis, CA) (2006).
  - [10] T.P. Hill, The Significant-Digit Phenomenon, *The American Mathematical Monthly* 102, 4 (1995) pp. 322-327.
  - [11] C. Breunig, A. Goerres, Searching for electoral irregularities in an established democracy: Applying Benford's law tests to Bundestag elections in Unified Germany, *Electoral Studies* 30 (2011) pp.534-545.
  - [12] S.Klimek, Y. Yegorov, R. Hanel, and S. Thurner, Statistical detection of systematic election irregularities, *Proc. Natl. Acad. Sci. USA* 109, 41 (2012).
  - [13] JD Deckert, M Myagkov, PC Ordeshook Benford's Law and the detection of election fraud. *Polit Anal* 19 (2011) pp.245-268.
  - [14] WR Mebane, Comment on "Benford's Law and the detection of election fraud", *Polit Anal* 19 (2011) pp.269-272

V. APPENDIX

In this appendix we depict several additional figures and tables that complement the main study (see the main text for references to each of these figures).

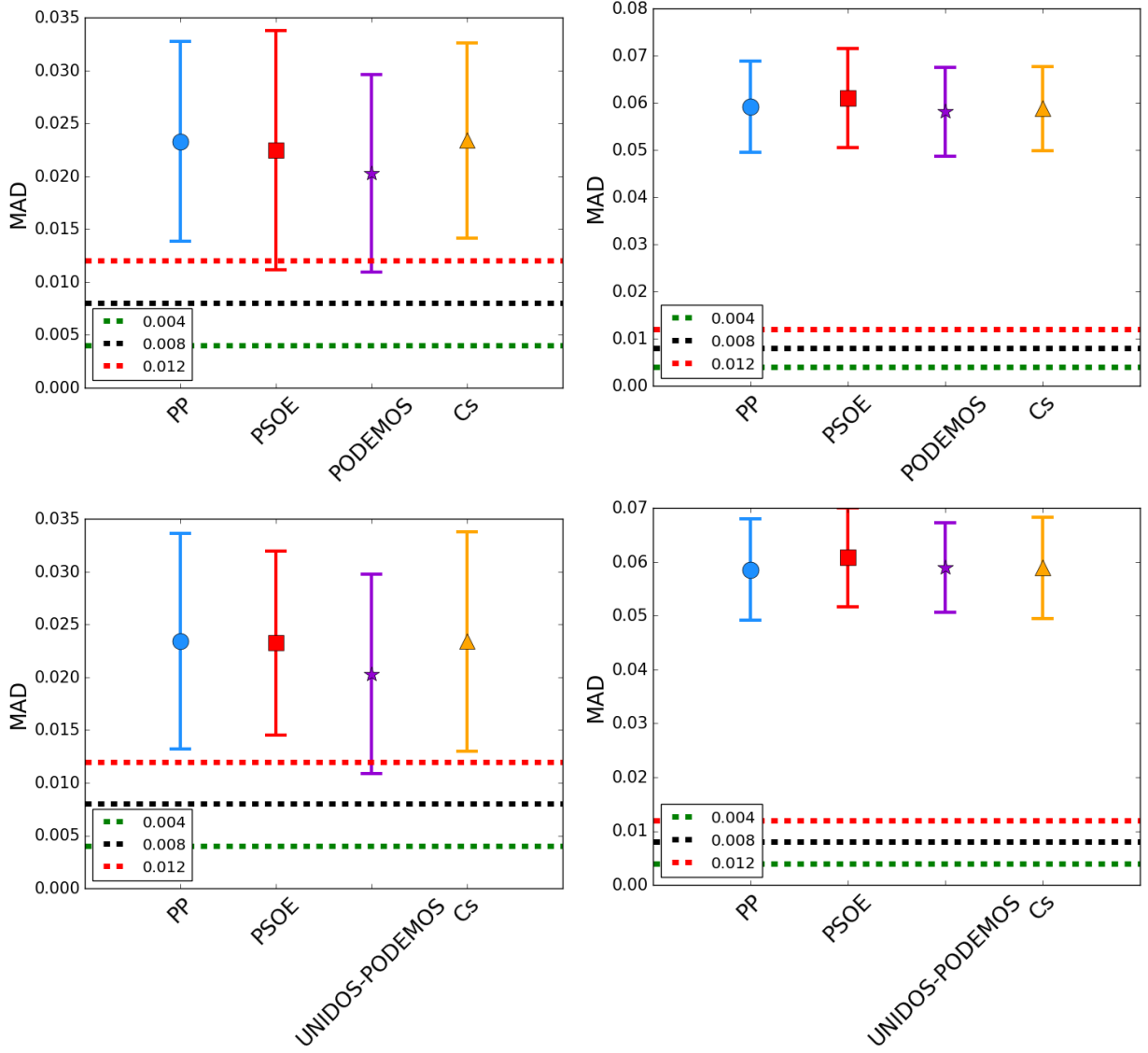


FIG. 8: Summary of MAD goodness of fit to 1BL (left panels) and 2BL (right panels) for 2015 (top panels) and 2016 (bottom panels), performed individually at each precinct (each precinct shows a precise distribution and an associated MAD, so here we plot the mean  $\pm$  standard deviation over all spanish precincts, excluding Ceuta and Melilla, precincts with a single municipality). In every case the critical values for rejection at the 95 and 99% confidence level are shown. Interestingly, in the case of 1BL for a large majority we accept conformance to Benford's law, whereas in the case of 2BL for a large majority the null hypothesis is rejected. All these results are consistent with the hypothesis test based on MAD (supplementary information)

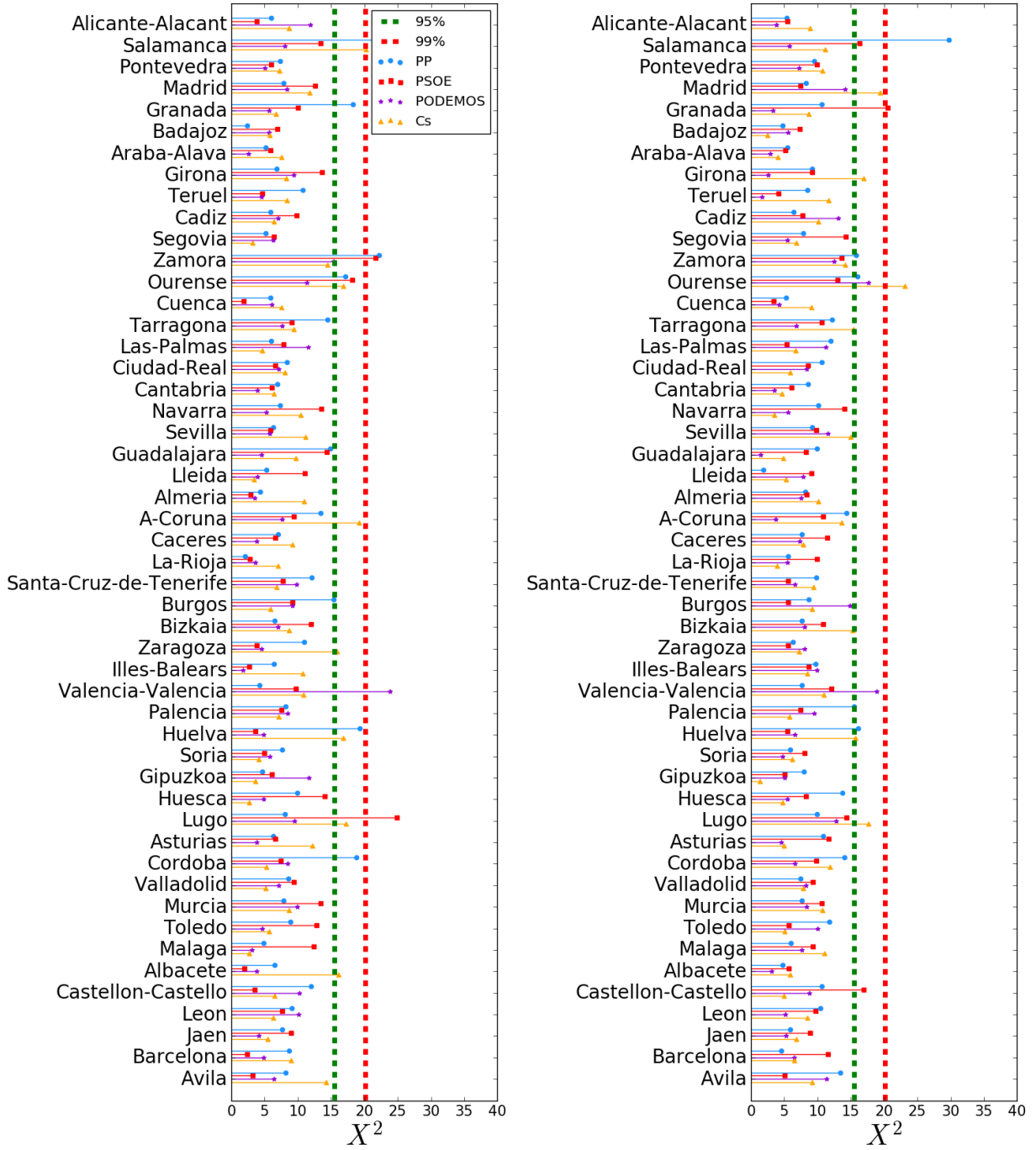


FIG. 9:  $\chi^2$  values of the goodness of fit to 1BL for 2015 (left panel) and 2016 (right panel) at the aggregation level of precincts. In every case the critical values for rejection at the 95 and 99% confidence level are shown. For a large majority we accept conformance to Benford's law. Note that results are inconsistent with the hypothesis test based on MAD as reported in Fig. 10.

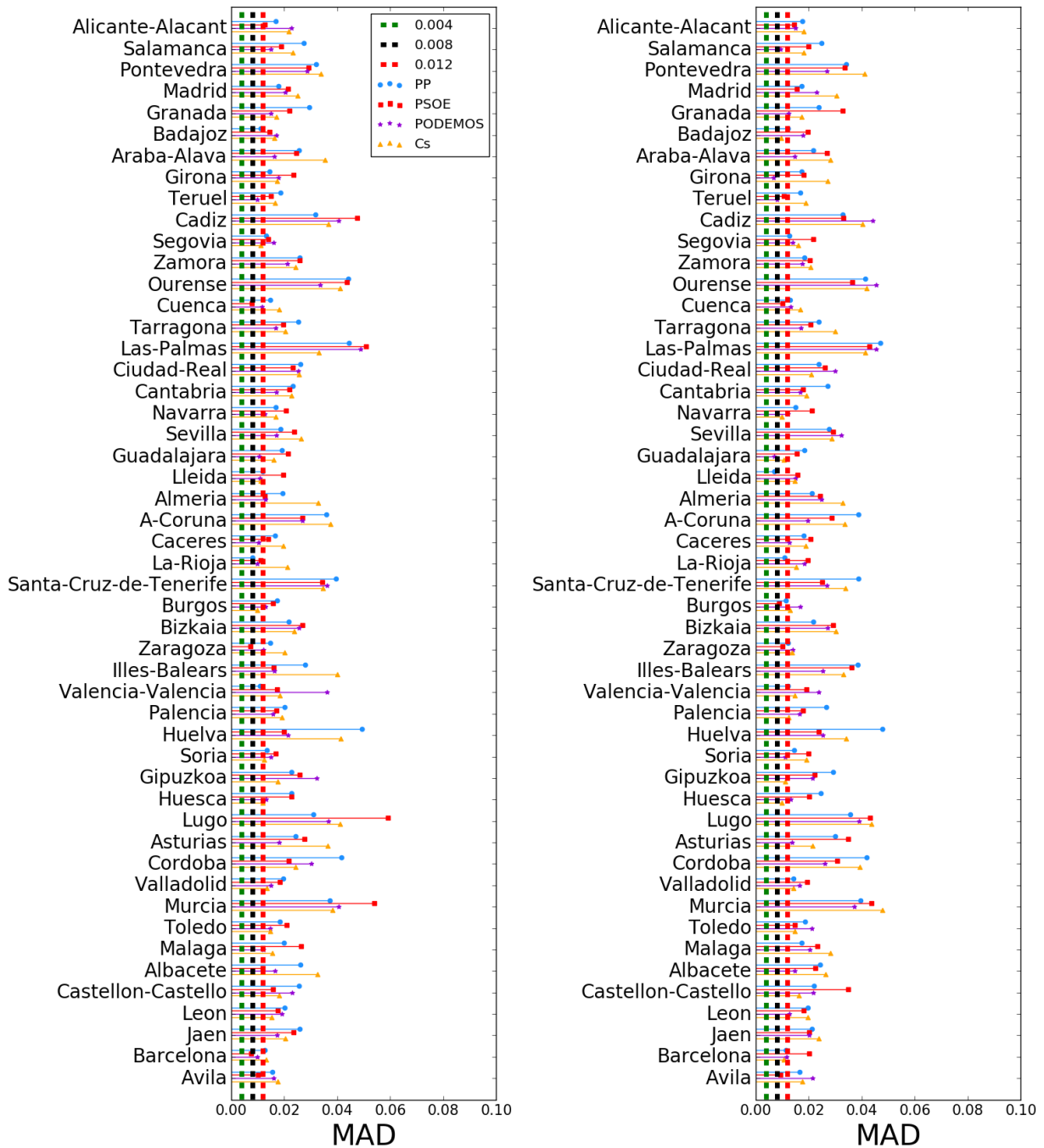


FIG. 10: MAD values of the goodness of fit to 1BL for 2015 (left panel) and 2016 (right panel) at the aggregation level of precincts. In every case the critical values for rejection at the 95 and 99% confidence level are shown. For a large majority we reject conformance to Benford's law at the precinct level according to MAD, this result being inconsistent with the one found for Pearson's  $\chi^2$  statistic.

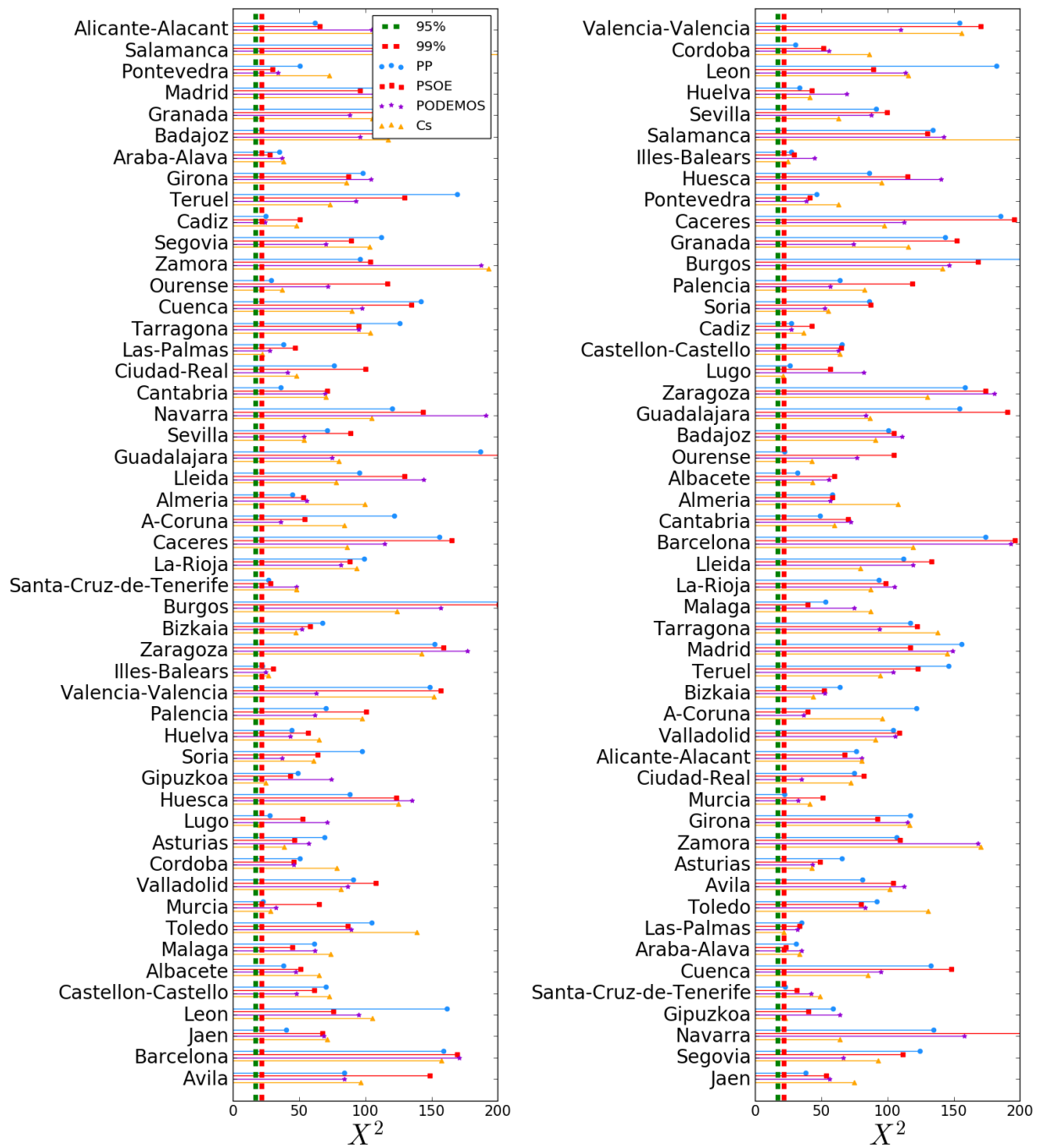


FIG. 11:  $\chi^2$  values of the goodness of fit to 2BL for 2015 (left panel) and 2016 (right panel) at the aggregation level of precincts. In every case the critical values for rejection at the 95 and 99% confidence level are shown. Virtually in all cases the null hypothesis is rejected. All these results are consistent with the hypothesis test based on MAD reported in Fig. 12.

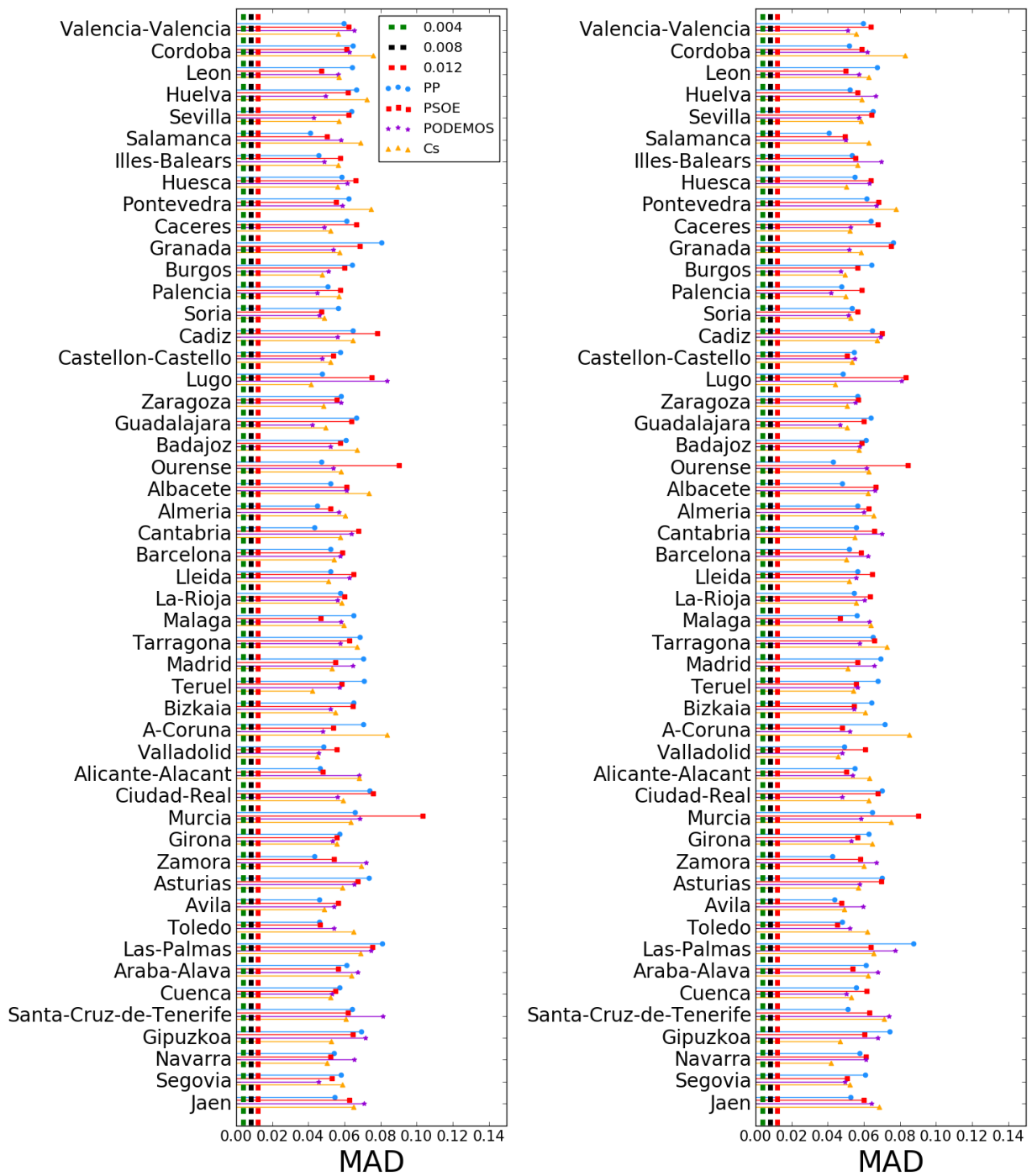


FIG. 12: MAD values of the goodness of fit to 2BL for 2015 (left panel) and 2016 (right panel) at the aggregation level of precincts. In every case the critical values for rejection at the 95 and 99% confidence level are shown. Virtually in all cases the null hypothesis is rejected.



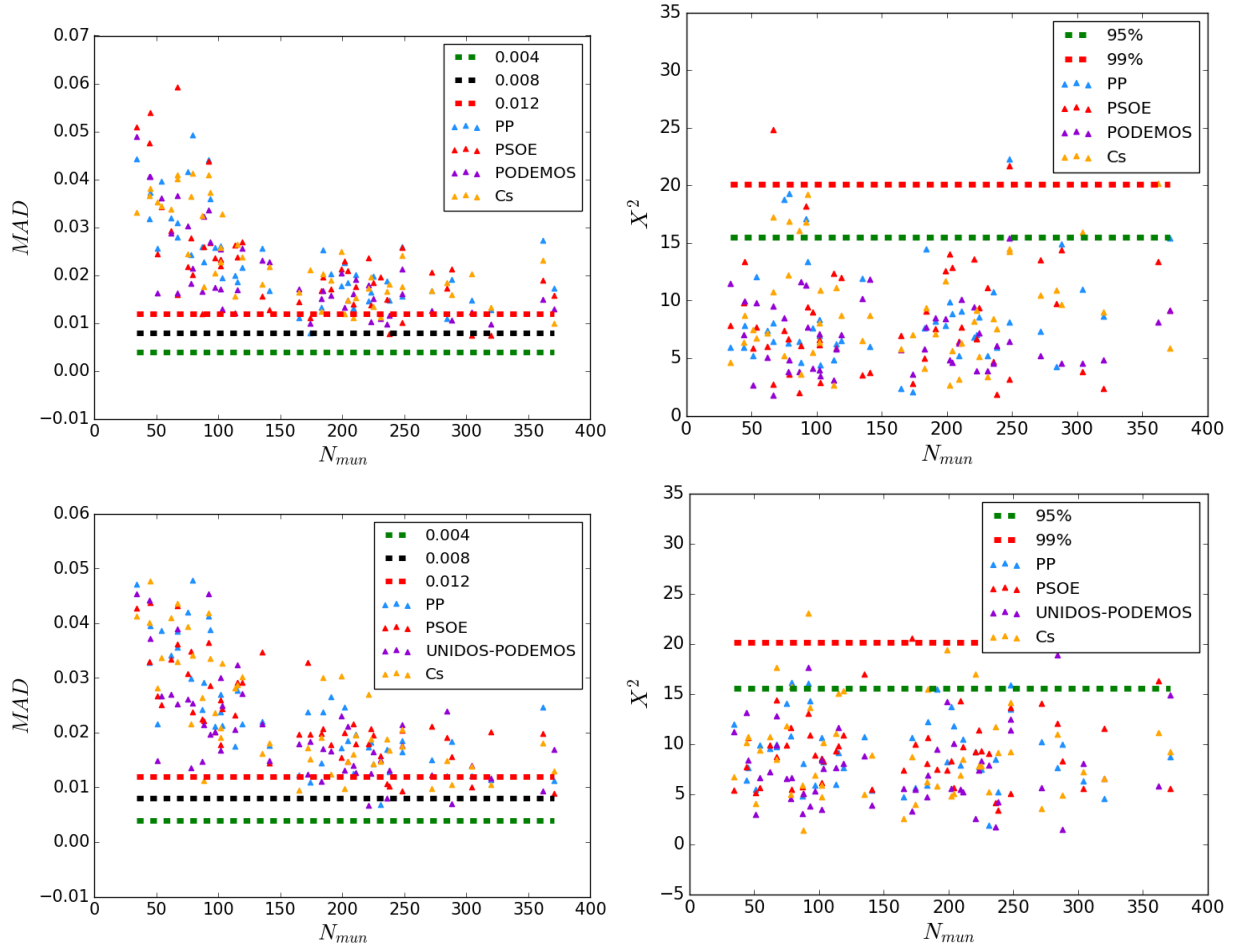


FIG. 13: Scatter plot of the MAD (left panels) and  $\chi^2$  (right panels) statistics extracted from the 1BL test of each precinct as a function of the number of municipalities in each precinct for year 2015 (top panels) and 2016 (bottom panels). In the case of MAD, we find a negative correlation as expected, but this correlation is not enough to explain the systematic nonconformance to 1BL. In the case of  $\chi^2$  there is no perceivable size effect.

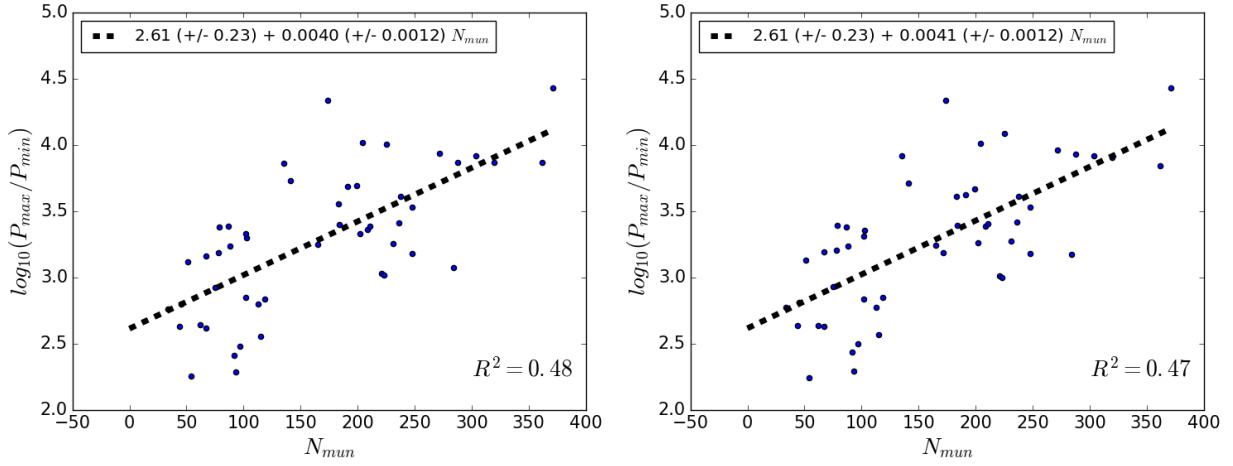


FIG. 14: Scatter plot of the number of orders of magnitude spanned by the voting populations of a precinct as a function of the number of municipalities in each precinct, for 2015 (left) and 2016 (right). We find a positive correlation with  $R^2 \approx 0.47$  suggesting that the "size" of a precinct in terms of the number of municipalities explains with 47% of the variation in the support (in terms of orders of magnitude) of the number of votes (the larger the number of municipalities, the more likely that the number of votes take values from a larger number of orders of magnitude). The coefficient of 0.004 indicates that, on average, when we move from a precinct with  $x$  municipalities to one with  $x + 100$ , the ratio of the biggest population to the smallest is 2.5 times bigger.

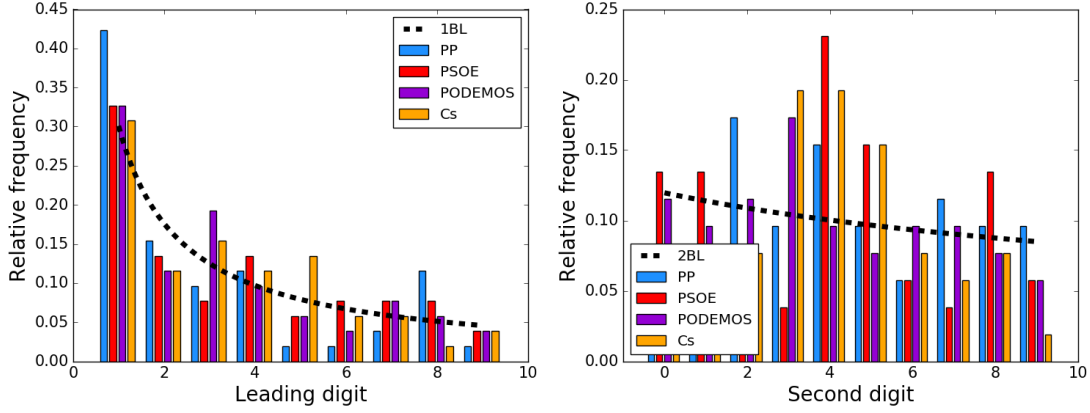


FIG. 15: Histograms of relative frequencies for the first (left panel) and second (right panel) significant digits for the main political parties vote counts aggregated over precincts, for the case of 2015.

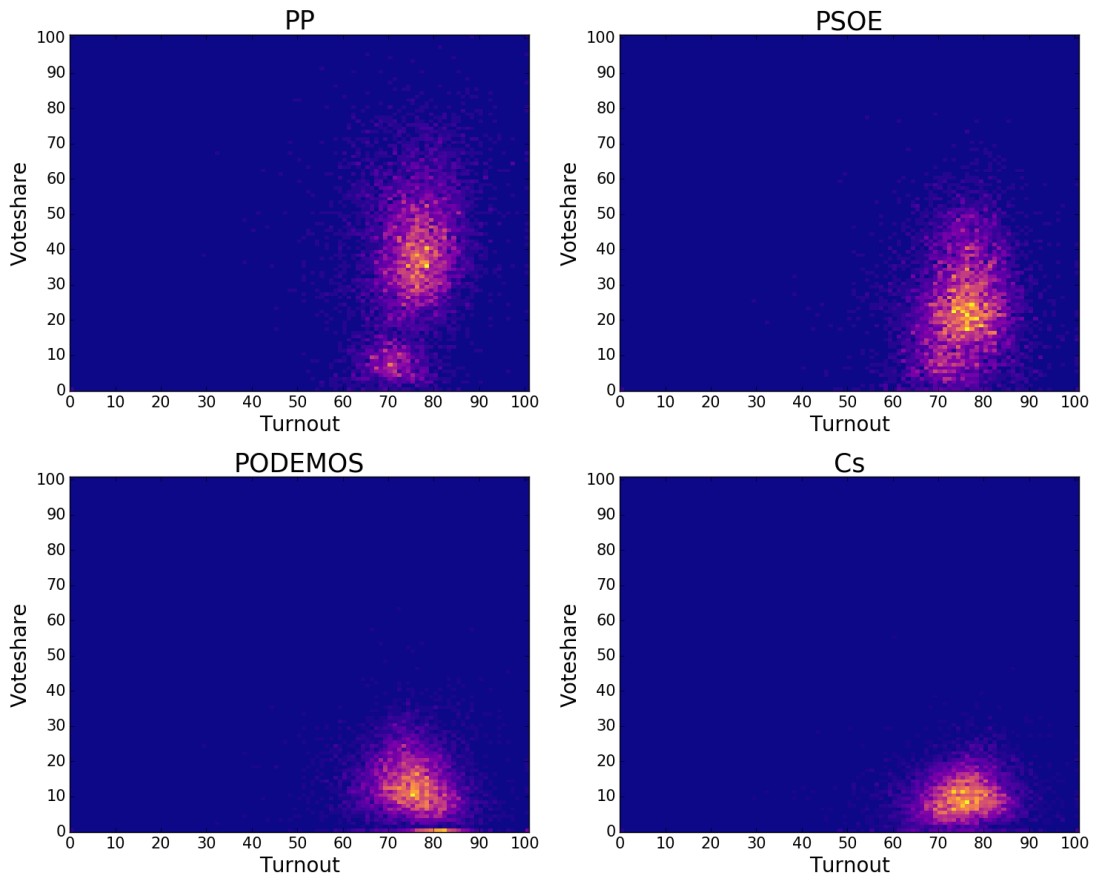


FIG. 16: Heatmaps plotting the percentage (in color scale) of municipalities where a given political party has received a certain percentage of votes, as a function of the relative participation. These are results associated to December 2015 elections. According to Klimek et al. [12] a smear out of the cluster towards the top-right corner of the heat map is a sign of incremental fraud, whereas extreme fraud would occur for bimodal distributions where a cluster emerges at the top-right corner.

Precinct	$N_{\text{mun}}$	Range 2015	Range 2016
Cadiz	44	383–162564	376–162111
Tarragona	184	36–89136	36–89031
A-Coruna	93	1020–196251	1007–196492
Zaragoza	304	12–98267	12–98399
Valencia-Valencia	284	37–43858	39–58015
Leon	211	42–101272	40–100862
Avila	248	13–43810	13–43759
Gipuzkoa	88	85–145679	85–145167
Granada	172	57–182735	119–182450
La-Rioja	174	5–108493	5–108755
Lugo	67	186–76951	183–77209
Castellon-Castello	135	16–116252	14–116049
Jaen	97	297–89693	285–89487
Cordoba	75	305–255629	301–255476
Barcelona	320	25–184321	23–182889
Araba-Alava	51	140–183368	136–183559
Valladolid	225	24–243129	20–242609
Teruel	236	10–25834	10–25959
Ourense	92	331–85240	314–85329
Palencia	191	13–63236	15–63072
Navarra	272	17–145462	16–145189
Asturias	78	146–223974	139–223268
Huelva	79	47–111520	45–111093
Pontevedra	62	535–232242	542–232465
Soria	183	8–28459	7–28540
Madrid	199	36–176867	38–176527
Sevilla	115	272–97848	266–98048
Huesca	202	18–38062	21–37988
Illes-Balears	67	192–275448	178–275883
Lleida	231	51–90807	48–90289
Cantabria	102	64–135418	66–135258
Murcia	45	492–308510	482–309387
Malaga	113	133–83852	142–84163
Ciudad-Real	102	81–57081	84–57248
Cuenca	238	10–40719	10–40722
Caceres	223	70–72783	75–74773
Segovia	209	17–38948	16–38867
Guadalajara	288	8–58795	7–59179
Girona	221	59–63288	62–63305
Salamanca	362	16–116942	17–117091
Almeria	103	70–139271	62–139412
Bizkaia	119	116–78875	111–78573
Toledo	204	6–61813	6–61731
Santa-Cruz-de-Tenerife	54	887–159534	919–159695
Albacete	87	54–130156	55–130572
Alicante-Alacant	141	44–234975	46–234691
Las-Palmas	34	508–292289	496–292504
Badajoz	165	63–111575	66–114755
Zamora	248	34–51358	34–51049
Burgos	371	5–134171	5–133923

TABLE IV: List of precincts with their number of different municipalities and the voting population ranges (by voting population we mean the number of possible voters). The largest cities, such as Madrid, Barcelona, Bilbao, Sevilla, Valencia, Zaragoza and Malaga have been subsequently divided into electoral districts and we have treated these latter districts as municipalities.