



## **Development and validation of an ultra-high performance LC-MS/MS assay for intracellular SN-38 in human solid tumour cell lines: comparison with a validated HPLC-fluorescence method.**

Ghazaly, E; Perry, J; Kitromilidou, C; Powles, T; Joel, S

Copyright © 2015 Elsevier B.V. or its licensors or contributors

For additional information about this publication click this link.

<http://qmro.qmul.ac.uk/xmlui/handle/123456789/9727>

Information about this research object was correct at the time of download; we occasionally make corrections to records, please therefore check the published record when citing. For more information contact [scholarlycommunications@qmul.ac.uk](mailto:scholarlycommunications@qmul.ac.uk)

Development and validation of an ultra-high performance LCMSMS assay for intracellular SN38 in human solid tumour cell lines Comparison with a validated HPLC-fluorescence method

ARTICLE in JOURNAL OF CHROMATOGRAPHY. B,  
ANALYTICAL TECHNOLOGIES IN THE BIOMEDICAL AND  
LIFE

SCIENCES · OCTOBER 2014; 969:213-8.

DOI: [10.1016/j.jchromb.2014.08.024](https://doi.org/10.1016/j.jchromb.2014.08.024)

1  
2  
3  
4  
5  
6  
7  
8  
9  
10  
11  
12  
13  
14  
15  
16  
17  
18  
19  
20  
21  
22  
23  
24  
25  
26  
27  
28  
29  
30  
31  
32  
33  
34  
35  
36  
37  
38  
39  
40  
41  
42  
43  
44  
45  
46  
47  
48  
49  
50  
51  
52  
53  
54  
55  
56  
57  
58  
59  
60  
61  
62  
63  
64  
65

**Title:**

**Development and validation of an ultra-high performance LC-MS/MS assay for intracellular SN-38 in human solid tumour cell lines: comparison with a validated HPLC-fluorescence method**

**Authors:**

Essam Ghazaly\*†<sup>1</sup>, Jackie Perry†<sup>1</sup>, Christiana Kitromilidou<sup>2</sup>, Thomas Powles<sup>2</sup> and Simon Joel<sup>1</sup>.

**Addresses**

<sup>1</sup> Centre for Haemato-Oncology, Barts Cancer Institute, Queen Mary University of London, London EC1M 6BQ, UK.

<sup>2</sup> Centre for Experimental Cancer Medicine, Barts Cancer Institute, Queen Mary University of London, London EC1M 6BQ, UK.

\* Correspondence to Dr Essam Ghazaly, [e.a.ghazaly@qmul.ac.uk](mailto:e.a.ghazaly@qmul.ac.uk)

† These authors contributed to the work equally and should be regarded as co-first authors

1  
2  
3  
4  
5  
6  
7  
8  
9  
10 **Abstract**  
11  
12  
13  
14

15  
16 A simple and rapid ultra-high performance liquid chromatography-mass  
17 spectrometry/mass spectrometry (UPLC-MS/MS) method has been developed for  
18 measuring intracellular concentrations of the anticancer agent 7-ethyl-10-  
19 hydroxycamptothecin (SN-38) in tumour cells using camptothecin (CPT) as internal  
20 standard. SN-38 extraction was carried out using acidified acetonitrile. SN-38 and CPT  
21 were separated on a PFP column using gradient elution with acidified water and  
22 acetonitrile. SN-38 and CPT were quantified using a triple quadrupole mass spectrometry  
23 system. Least square regression calibration lines were obtained with average correlation  
24 coefficients of  $R^2 = 0.9993 \pm 0.0016$ . The lower limit of detection (LOD) and lower limit  
25 of quantification (LOQ) for SN-38 were 0.1 and 0.3 ng/ml, respectively. CPT recovery  
26 was  $98.5 \pm 13\%$  and SN-38 recoveries at low quality control (LQC, 5ng/ml) and high  
27 quality control (HQC, 500ng/ml) were  $89 \pm 6\%$  and  $95 \pm 8\%$ , respectively. The intra- and  
28 inter-day imprecision for LQC was 6.0 and 9.2%, and for HQC was 4.7 and 7.1%.,  
29 respectively. The method was compared to a validated high performance liquid  
30 chromatography-fluorescent method. In addition, the method has been successfully  
31 applied to determine the intracellular accumulation of SN-38 investigating the transport  
32 through ABCB1 (P-gp) and ABCG2 (BCRP) efflux pumps in colorectal cancer cell lines.  
33  
34  
35  
36  
37  
38  
39  
40  
41  
42  
43  
44  
45  
46  
47  
48  
49  
50  
51  
52  
53  
54  
55  
56  
57  
58  
59  
60  
61  
62  
63  
64  
65

1  
2  
3  
4  
5  
6  
7  
8  
9  
10  
11  
12  
13  
14  
15  
16  
17  
18  
19  
20  
21  
22  
23  
24  
25  
26  
27  
28  
29  
30  
31  
32  
33  
34  
35  
36  
37  
38  
39  
40  
41  
42  
43  
44  
45  
46  
47  
48  
49  
50  
51  
52  
53  
54  
55  
56  
57  
58  
59  
60  
61  
62  
63  
64  
65

**Keywords**

SN-38; ultra-high performance LC-MS/MS; HPLC-fluorescence; method validation;  
method comparison.

## 1. Introduction

Irinotecan is mainly used in the treatment of colorectal cancer either alone or in combination with other drugs. SN-38 is the active metabolite of irinotecan (**Figure 1**). Irinotecan is converted to 7-ethyl-10-hydroxycamptothecin (SN-38) by human carboxylesterase (hCE) [1]. Irinotecan belongs to a class of anti-cancer drugs known as topoisomerase I poisons. Topoisomerase I enzymes allow DNA to relax by causing single stranded breaks, unwinding of DNA for replication to occur, and then re-annealing of the DNA double helix. If single stranded breaks remain due to the binding of SN-38, it ultimately leads to apoptosis of the affected cell.

SN-38 can undergo glucuronic acid conjugation and thus detoxification to form SN-38 glucuronide inside the body. The extent to which this occurs can greatly alter the side effects of irinotecan therapy such as diarrhoea [2]. Polymorphisms of UDP-glucuronosyltransferase (UGT) 1A1 enzyme can be associated with accumulation of SN-38 with increased risk of toxicity [3]. Therefore, plasma concentrations of SN-38 could serve as a useful marker predicting toxicity when irinotecan is given to cancer patients. In addition, intracellular concentrations of SN-38 are also thought to vary due to efflux of SN-38 via drug efflux pumps such as breast cancer-related protein (ABCG2). This efflux system may vary between tumour types and confers resistance to the drug [4]. So, measuring intracellular SN-38 could serve as an additional marker for drug activity/toxicity in patients.

1  
2  
3  
4 Previous HPLC quantitative methods described for SN-38 were mainly for plasma or  
5 liposomes as opposed to intracellular measurements [5-14]. Some of the plasma methods  
6  
7 were adapted to quantify intracellular SN-38 but without full validation of the optimised  
8  
9 methods [15,16]. Other groups [17,18] have successfully developed specific methods for  
10  
11 intracellular measurements. However, these methods were aimed primarily at separating  
12  
13 the lactone and hydroxy forms of SN-38 and involved complex chromatography leading  
14  
15 to long run times. In addition, SN-38 peak tailing was notable despite the use of ion  
16  
17 pairing. Therefore, we have developed and validated this novel ultra-high performance  
18  
19 liquid chromatography-mass spectrometry/mass spectrometry (UPLC-MS/MS) method  
20  
21 specifically for the determination of intracellular total SN-38 (hydroxy + lactone); with the  
22  
23 aims of shortening the run time and improving SN-38 peak resolution. The method was  
24  
25 developed using a pentafluoryl phenyl (PFP) UPLC column which allowed fast analysis  
26  
27 and good peak shape without the need for ion-pairing agents. Moreover, the method  
28  
29 applicability was tested in a panel of colorectal cancer cell lines and the results were  
30  
31 compared to a validated high performance liquid chromatography-fluorescent (HPLC-  
32  
33 Flu) method which have been used in a number of previous studies [4,19,20].  
34  
35  
36  
37  
38  
39  
40  
41  
42  
43  
44

## 45 **2. Material and methods**

### 46 **2.1 Materials**

47  
48  
49  
50  
51  
52  
53  
54  
55  
56 SN-38, CPT-(s)-(+)-Camptothecin, Ciclosporin A, Fumitremorgin C, Sodium dodecyl  
57  
58 sulphate (SDS) GC grade, Hanks balanced salt solution and Dulbecco's modified Eagles  
59  
60  
61  
62  
63  
64  
65

1  
2  
3  
4 Medium were all obtained from Sigma Aldrich, (Dorset, UK). AnalaR grade HCl and  
5  
6 NaH<sub>2</sub>PO<sub>4</sub> were obtained from VWR, (West Sussex, UK). Trypsin was purchased from  
7  
8 Invitrogen, (Paisley, UK). LC-MS grade formic acid (FA), water, methanol and  
9  
10 acetonitrile (ACN) were all obtained from Fisher Scientific, (Loughborough, UK) and  
11  
12 SN-38 from Pfizer, (Cambridge, UK). HT29, and SW620 cell lines were obtained from  
13  
14 the American Type Culture Collection (Teddington, Middlesex, UK). HCT116 was  
15  
16 obtained from the European Collection of Cell Cultures (Wiltshire, UK)  
17  
18  
19  
20  
21  
22

## 23 **2.2 Instrumentation, chromatographic and mass spectrometry conditions**

24  
25  
26  
27  
28 SN-38 and CPT were separated on an Accela UPLC system, Thermo Scientific, (Hemel  
29  
30 Hempstead, UK) equipped with Kinetex 1.7 µm PFP, LC Column 100 × 2.1 mm obtained  
31  
32 from Phenomenex, (Macclesfield, Cheshire, UK). Gradient elution was employed using a  
33  
34 mobile phase of 0.1% FA in water (buffer A) and 0.1% FA in ACN (buffer B) as follows:  
35  
36 Buffer A = 70% at 0 min, from 70 to 10% over 2 minutes, held at 10% for 1 minute, from  
37  
38 10 to 70% over 0.1 minutes, ending with 70% for 3 minutes, all at a flow rate of 250  
39  
40 µl/min.  
41  
42  
43  
44

45  
46 Triple-stage-quadrupole mass spectrometry (TSQ) Vantage system, Thermo Scientific,  
47  
48 (Hemel Hempstead, UK) equipped with an electrospray ion source was used for mass  
49  
50 detection. Samples were analyzed in the Multiple Reaction Monitoring (MRM), positive  
51  
52 mode at a spray voltage of 3500 V. Nitrogen was used as sheath and auxiliary gases at a  
53  
54 flow rate of 30 and 10 arbitrary units, respectively. Argon was used as collision gas with  
55  
56 pressure of 1.5 mTorr. The optimum transitional daughter ion mass and collision energy  
57  
58  
59  
60  
61  
62  
63  
64  
65



1  
2  
3  
4 for SN-38 was: m/z 393.1 → 349.4 (collision energy 25V) and for CPT: m/z 349.1 →  
5  
6  
7 305.4 (collision energy 23V). Data acquisition and chromatography analysis were carried  
8  
9  
10 out using Xcalibur software version 2.2 from Thermo Scientific, UK.

11  
12  
13  
14 The HPLC-Flu system consisted of Perkin Elmer series 200 HPLC system (Perkin Elmer,  
15  
16  
17 Cambridge, UK) equipped with Luna ODS, C18(2), 3 µm, 150 × 4.6mm ID, from  
18  
19  
20 Phenomenex (Macclesfield, Cheshire, UK), fitted with a C18 security guard cartridge  
21  
22  
23 also from Phenomenex (Macclesfield, Cheshire, UK). Analytes were eluted using an  
24  
25  
26 isocratic mobile phase consisting of 50 mM NaH<sub>2</sub>PO<sub>4</sub> buffer (pH 3.1) containing 10 mM  
27  
28  
29 SDS 65%: ACN 35%. At a flow rate of 1 ml/min. Analytes were detected using Perkin  
30  
31  
32 Elmer series 200 HPLC fluorescence detector equipped with a xenon lamp operating at  
33  
34  
35 wavelengths of 380 and 540 nm for excitation and emission, respectively. Data  
36  
37  
38 acquisition and chromatography analysis was carried out using Turbochrom software  
39  
40  
41 version 6.2.1 from Perkin Elmer (Cambridge, UK).

### 42 **2.3 Cell extraction procedure**

43  
44  
45  
46 Cell samples were pelleted by centrifugation at 600 g, each containing 6 million cells.  
47  
48  
49 After removal of supernatant, 200µl of 50% ACN containing 0.5% FA and 1 µg/ml CPT  
50  
51  
52 was added to each sample, vortexed for 60 seconds and placed on ice for 30 min to allow  
53  
54  
55 protein precipitation to occur. Samples were then spun at 10,000 g, 4 °C, for 10 min to  
56  
57  
58 pellet the cell precipitate. 150µl supernatant was then transferred into LC-MS vials and  
59  
60  
61 10 µl injected directly into the UPLC-MS system.  
62  
63  
64  
65

1  
2  
3  
4  
5  
6  
7 **2.4 Preparation of standards and controls**  
8  
9

10  
11 SN-38 and CPT stock solutions were prepared at 1 mg/ml by dissolving in DMSO and  
12 chloroform/methanol (4:1 vol:vol), respectively.  
13  
14

15  
16  
17  
18 Working standards of SN-38 at the following concentrations 0.1, 0.3, 1, 3, 10, 30, 100,  
19 300 and 1000 ng/ml were prepared by diluting SN-38 stock in pooled drug free cell  
20 pellets. Quality control samples (QC) of 5, 50 and 500 ng/ml were prepared by dilution of  
21 SN-38 stock in pooled drug free cell pellets.  
22  
23  
24  
25  
26  
27

28  
29  
30  
31 Linearity of the assay was determined by injecting the working standards into the UPLC  
32 system. The peak area of each analyte concentration was divided by the peak area of CPT  
33 internal standard. The resultant ratio was then plotted against the concentration using a  
34 weighted ( $1/x^2$ ) quadratic least square regression model, where x is the concentration and  
35 y is the peak area ratio.  
36  
37  
38  
39  
40  
41  
42  
43  
44

45 **2.5 Sensitivity**  
46  
47

48  
49  
50 The lower limited of detection (LOD) was determined as the concentration of extracted  
51 SN-38 that had a peak area ratio 3 times higher than the baseline noise. The lower limit of  
52 quantitation (LOQ) was determined as the lowest conc. of extracted SN-38 with  
53 imprecision < 10% and inaccuracy <15%.  
54  
55  
56  
57  
58  
59  
60  
61  
62  
63  
64  
65

1  
2  
3  
4  
5  
6  
7  
8  
9  
10  
11  
12  
13  
14  
15  
16  
17  
18  
19  
20  
21  
22  
23  
24  
25  
26  
27  
28  
29  
30  
31  
32  
33  
34  
35  
36  
37  
38  
39  
40  
41  
42  
43  
44  
45  
46  
47  
48  
49  
50  
51  
52  
53  
54  
55  
56  
57  
58  
59  
60  
61  
62  
63  
64  
65

## **2.6 Imprecision and inaccuracy**

Interday imprecision was determined by extraction and analysis of three QC samples of known concentration 5 ng/ml (Low Quality Control; LQC), 50 (Middle Quality Control; MQC) and 500 ng/ml (High Quality Control; HQC) over 6 different days.

Intraday imprecision was determined by extraction and analysis of 6 replicates of each of the two QC samples within the same run.

Inaccuracy was determined by calculating the percentage deviation of the measured concentration from the nominal values of each QC sample.

## **2.7 Extraction recovery**

Extraction efficiency (%) was determined at two QC levels (LQC and HQC) by dividing the peak areas from extracted samples with those from spiked post-extracted blank cell extract samples at the same QC concentration. Recovery of the CPT was determined in the same way at a concentration of 1 µg/ml.

## **2.8 Specificity for SN-38 and CPT**

1  
2  
3  
4 Specificity was evaluated by injecting blank mobile phase to conform that no peaks were  
5  
6 co-eluting at the positions of SN-38, CPT. This was also repeated with drug free (blank)  
7  
8 cell extract.  
9

## 10 11 12 13 14 **2.9 Stability**

15  
16  
17  
18  
19 Stability of SN-38 and CPT were evaluated by repeated injection of standards after freeze  
20  
21 thaw cycles over a 3 month period of time.  
22

## 23 24 25 26 **2.10 Application of method**

27  
28  
29  
30  
31 This method was used to determine intracellular SN-38 concentrations in human cancer  
32  
33 cell lines derived from colon cancer (HT29, HCT116 and SW620) in the presence and  
34  
35 absence of fumitremorgin C (a known ABCG2 efflux inhibitor) and Ciclosporin A (P-gp  
36  
37 efflux inhibitor).  
38

39  
40  
41  
42  
43 Cells were grown in appropriate media in 90 ml flasks, trypsinized and counted prior to  
44  
45 the experiment. Samples of each cell line were then distributed to Falcon tubes at a  
46  
47 concentration of 2 million cells /ml (3 ml in each falcon tube). Each sample was then  
48  
49 treated with 0.1µM SN-38, with and without 10µM ciclosporin or 5 µM Fumitremorgin  
50  
51 C. Incubated at 37°C for 2hrs to allow uptake/efflux to occur, after which, samples were  
52  
53 spun at 600 g, 4°C, for 6min to pellet cells. After removal of supernatant the cells were  
54  
55 washed once in ice cold hanks and transferred into 1.7ml Eppendorf tubes. Samples were  
56  
57  
58  
59  
60  
61  
62  
63  
64  
65

1  
2  
3  
4 then re-spun at 600 g, 4°C, for 6 min to pellet cells. Cell extraction procedure was then  
5  
6 carried out as previously described in section 2.3.  
7  
8  
9

### 10 11 **3. Results**

#### 12 13 14 15 16 **3.1 Method development and optimisation**

17 Two different UPLC columns (PFP and HILIC) were investigated. SN-38 and CPT could  
18  
19 not be chromatographically separated on the HILIC column (Kinetex HILIC, 2.1 ×  
20  
21 100mm) using 80% acetonitrile isocratic elution at a flow rate of 250µl. SN-38 peak full  
22  
23 width at half maximum height (FWHM) was 0.1 minutes and retention time was 1.15  
24  
25 minutes (data not shown). These results suggested that SN-38 was not retained enough on  
26  
27 the HILIC column as the void time on this system was expected to be 0.96 minutes.  
28  
29 However, the PFP column produced efficient retention and sharp peaks using a simple  
30  
31 mobile phase gradient of water and ACN (Figure 2). Finally, the gradient was optimized  
32  
33 to achieve high throughput analysis.  
34  
35  
36  
37  
38  
39  
40  
41  
42  
43

#### 44 **3.2 Extraction recovery**

45  
46 Extraction recoveries were reproducible and consistent across 6 independent experiments  
47  
48 (total of 203 samples) with mean values of  $98.5 \pm 13\%$  for CPT. SN-38 recoveries at  
49  
50 LQC and HQC (total of 24 samples) was  $89 \pm 6\%$  and  $95 \pm 8\%$ , respectively.  
51  
52  
53  
54  
55

#### 56 **3.3 Standard curves and linearity**

57  
58  
59  
60  
61  
62  
63  
64  
65

1  
2  
3  
4 The mean response factor across 6 experiments (standards were run in duplicate) was  
5  
6  
7  $239.5 \pm 18.2$  (Stdev). The average  $r^2$  was  $0.9993 \pm 0.0016$ . (**Table 1**). The imprecision at  
8  
9 the 0.1 ng/ml concentration was not acceptable (34.1%), so this calibrator point was  
10  
11 removed from the standard curve used in quantifying intracellular SN-38.  
12  
13

### 14 15 16 **3.4 Imprecision and Inaccuracy** 17

18  
19 Intra-day imprecision was less than 6.0% over 6 experiments. Highest imprecision was  
20  
21 noted with LQC. The mean measured value for the LQC was  $5.1 \pm 0.3$  with inaccuracy of  
22  
23 1.2%. The mean measured concentration for HQC was 492.0 with inaccuracy of -1.6%  
24  
25 (**Table 2**).  
26  
27

28  
29  
30  
31 Inter-day imprecision were less than 9.2% across 6 experiments. The mean measured  
32  
33 value for the LQC was  $5.1 \pm 0.5$  with inaccuracy of 1.9%. The mean measured  
34  
35 concentration for HQC was 491.5 with inaccuracy of -1.7% (**Table 2**).  
36  
37

### 38 39 40 41 **3.5 Sensitivity** 42

43  
44 As shown in **Figure 2 (E) and Table 1**, although SN-38 was detectable at a  
45  
46 concentration of 0.1ng/ml, the imprecision at this concentration exceeded 10%. Therefore  
47  
48 LOQ was identified as 0.3 ng/ml and LOD identified as 0.1 ng/ml. The impression at  
49  
50 LOQ and LOD was 8 and 34%, respectively.  
51  
52

### 53 54 55 **3.6 Specificity** 56 57 58 59 60 61 62 63 64 65

1  
2  
3  
4 Extracted blank cell extract showed no peaks eluting at the retention times of SN-38 and  
5  
6 CPT (1.75 and 1.89 minutes, respectively). **Figure 3 (D & G)** shows example  
7  
8 chromatograms for blank cell extracts with no co-eluting compounds at the expected  
9  
10 retention time of SN-38 and CPT, respectively.  
11  
12  
13  
14

### 15 16 **3.7 Freeze-thaw stability** 17 18 19 20

21 The results of the stability experiments are shown in **Table 3**. SN-38 stock solution was  
22  
23 found to be stable at  $-40^{\circ}\text{C}$  for 3 months with a concentration difference of less than 5%  
24  
25 after 3 months of storage. The analytical method is therefore proved to be applicable for  
26  
27 routine analysis over this period of time.  
28  
29  
30  
31  
32

### 33 **3.8 Method Application** 34 35

36 **Figure 3** shows that Cyclosporin A had little effect on the accumulation of SN-38 in the  
37  
38 three colorectal cell lines with significant increase of 57% in HT29 cell line ( $p < 0.05$ ).  
39  
40 These results suggest that ABCB1 has a minor role in SN-38 efflux. However,  
41  
42 Fumitremorgin C (a specific ABCG2 inhibitor) resulted in a dramatic increase in SN-38  
43  
44 intracellular concentrations in all colorectal cell lines with 4.3, 2.1 and 3.1 fold increase  
45  
46 in HT29, HCT116 and SW620 cell lines, respectively. Combined administration of  
47  
48 cyclosporin A and fumitremorgin C did not result in more SN-38 accumulation compared  
49  
50 to fumitremorgin C alone treatment. These results suggest that SN-38 efflux in colorectal  
51  
52 cell lines is mainly via ABCG2.  
53  
54  
55  
56  
57  
58  
59  
60  
61  
62  
63  
64  
65

### 3.9 UPLC-MS/MS Vs HPLC-Flu Method Comparison

This novel UPLC-MS/MS method resulted in sharp peak shapes for both SN-38 and CPT. FWHM for SN-38 and CPT was >0.1 minute for UPLC-MS method compared to 0.2 and 0.3 minutes, respectively for the HPLC-Flu method. The retention times obtained for the UPLC-MS method were 1.75 and 1.89 minutes for SN-38 and CPT, respectively compared to 3.7 and 4.6 minutes for the HPLC-Flu. This resulted in a shorter total run time for the UPLC-MS method (6 minutes compared to 7 minutes for HPLC-Flu). In addition, the UPLC-MS method had higher sensitivity with LOQ value of 0.3 ng/ml compared to 1 ng/ml for HPLC-Flu. The fluorescent detection of the HPLC-Flu method was saturated at a SN-38 concentration of 300 ng/ml, while the mass spectrometry detector of the UPLC-MS method detected SN-38 concentrations up to 10,000 ng/ml without saturation. Therefore, this novel UPLC-MS method covered a wider dynamic range (0.3-1000ng/ml compared to 1-200 ng/ml for HPLC-Flu). Imprecision and inaccuracy values were < 10% for both methods. The two methods were used to determine intracellular SN-38 concentrations in a panel of colorectal cancer cell lines. The results were then compared using Bland-Altman analysis in order to determine the degree of agreement between the two methods (**Figure 3D**). The average bias between the two methods was close to zero (0.16 ng/ml). In addition, the 95% limits of agreement were between +8.29 and -7.97 ng/ml.



1  
2  
3  
4  
5  
6  
7  
8  
9  
10  
11  
12  
13  
14  
15  
16  
17  
18  
19  
20  
21  
22  
23  
24  
25  
26  
27  
28  
29  
30  
31  
32  
33  
34  
35  
36  
37  
38

## 4. Conclusion

The method described in this work is the first UPLC-MS method to be developed specifically for intracellular quantification of SN-38. The extraction method is simple and reproducible with high extraction yield. The method is highly sensitive, precise and accurate. A good separation was achieved with excellent peak resolution and minimal peak tailing without using any ion pairing agents. Moreover, the chromatography run time was shorter permitting high sample throughput. This method has been successfully applied to the measurement of intracellular SN-38 accumulation in a number of colorectal cell lines studying SN-38 efflux. In all the studied cell lines, SN-38 efflux was found to be mainly regulated by ABCG2 with minimal contribution of ABCB1. These results suggest that the newly developed UPLC-MS method is ideally suited for this type of analysis.

## Acknowledgment

39  
40  
41  
42  
43  
44  
45  
46  
47  
48  
49

The authors would like to thank Professor David Perrett, Bioanalysis, William Harvey Research Institute, Queen Mary University of London, for assistance in editing this manuscript.

## Figure Captions

50  
51  
52  
53  
54  
55  
56  
57  
58  
59  
60  
61  
62  
63  
64  
65

**Figure 1.** Chemical structure of irinotecan (A) and SN-38 (B)

1  
2  
3  
4 **Figure 2.** Examples of mass spectral analysis of SN-38 (A) and CPT (B). Typical  
5 standard curve for SN-38 is also shown (C) with quadratic curve fit. Example  
6 chromatograms produced using HT29 colon cancer cells, with blank cell extract with no  
7 SN-38 (D), lower limit of detection (LOD) at 0.1 ng/ml SN-38 (E) and SN-38  
8 accumulation at 33 ng/ml (F). The internal standard CPT chromatograms are also shown  
9 in double blank cell extract (G) with no CPT and CPT concentration of 1 µg/ml added to  
10 the extraction solution (H).  
11  
12  
13  
14  
15  
16  
17  
18  
19  
20  
21  
22

23 **Figure 3.** Intracellular accumulation of SN-38 before and after treatment with ABCB1  
24 (P-gp) inhibitor, ciclosporin (CA), ABCG2 (BRCP) inhibitor fumtremorgin C (FMC) and  
25 a combination of CA + FMC in three colorectal cell lines HT29, HCT116 and SW620  
26 corresponding to Figure A, B and C, respectively (NS = non-significant, \* = significant  
27 with  $p < 0.05$  and \*\*\* = significant with  $p < 0.001$ ). Bland Altman plot showing the  
28 agreement in determining the SN-38 intracellular concentrations in the three colorectal  
29 cell lines between the UPLC-MS and HPLC-Flu is also shown (D)  
30  
31  
32  
33  
34  
35  
36  
37  
38  
39  
40  
41  
42  
43  
44  
45  
46  
47  
48  
49  
50  
51  
52  
53  
54  
55  
56  
57  
58  
59  
60  
61  
62  
63  
64  
65

1  
2  
3  
4 References  
5  
6  
7  
8

- 9 [1] K. Ohtsuka, S. Inoue, M. Kameyama, A. Kanetoshi, T. Fujimoto, K. Takaoka, Y.  
10 Araya, A. Shida, Lung Cancer 41 (2003) 187.  
11  
12 [2] C.F. Stewart, W.C. Zamboni, W.R. Crom, P.J. Houghton, Cancer Chemother  
13 Pharmacol 40 (1997) 259.  
14  
15 [3] Y. Ando, H. Saka, M. Ando, T. Sawa, K. Muro, H. Ueoka, A. Yokoyama, S.  
16 Saitoh, K. Shimokata, Y. Hasegawa, Cancer Res 60 (2000) 6921.  
17  
18 [4] J. Perry, E. Ghazaly, C. Kitromilidou, E.H. McGrowder, S. Joel, T. Powles, Mol  
19 Cancer Ther 9 (2010) 3322.  
20  
21 [5] D.L. Warner, T.G. Burke, J Chromatogr B Biomed Sci Appl 691 (1997) 161.  
22  
23 [6] W. Guo, A. Ahmad, S. Khan, F. Dahhani, Y.F. Wang, I. Ahmad, J Chromatogr B  
24 Analyt Technol Biomed Life Sci 791 (2003) 85.  
25  
26 [7] J.A. Zhang, T. Xuan, M. Parmar, L. Ma, S. Ugwu, S. Ali, I. Ahmad, Int J Pharm  
27 270 (2004) 93.  
28  
29 [8] E. Cecchin, G. Corona, S. Masier, P. Biason, G. Cattarossi, S. Frustaci, A.  
30 Buonadonna, A. Colussi, G. Toffoli, Clin Cancer Res 11 (2005) 6901.  
31  
32 [9] S. Khan, A. Ahmad, W. Guo, Y.F. Wang, A. Abu-Qare, I. Ahmad, J Pharm  
33 Biomed Anal 37 (2005) 135.  
34  
35 [10] X. Yang, Z. Hu, S.Y. Chan, B.C. Goh, W. Duan, E. Chan, S. Zhou, J Chromatogr  
36 B Analyt Technol Biomed Life Sci 821 (2005) 221.  
37  
38 [11] T. Xuan, J.A. Zhang, I. Ahmad, J Pharm Biomed Anal 41 (2006) 582.  
39  
40  
41  
42  
43  
44  
45  
46  
47  
48  
49  
50  
51  
52  
53  
54  
55  
56  
57  
58  
59  
60  
61  
62  
63  
64  
65

1  
2  
3  
4  
5  
6  
7  
8  
9  
10  
11  
12  
13  
14  
15  
16  
17  
18  
19  
20  
21  
22  
23  
24  
25  
26  
27  
28  
29  
30  
31  
32  
33  
34  
35  
36  
37  
38  
39  
40  
41  
42  
43  
44  
45  
46  
47  
48  
49  
50  
51  
52  
53  
54  
55  
56  
57  
58  
59  
60  
61  
62  
63  
64  
65

[12] T. Bansal, A. Awasthi, M. Jaggi, R.K. Khar, S. Talegaonkar, *Talanta* 76 (2008) 1015.

[13] M.T. Baylatry, A.C. Joly, J.P. Pelage, L. Bengrine-Lefevre, J.L. Prugnaud, A. Laurent, C. Fernandez, *J Chromatogr B Analyt Technol Biomed Life Sci* 878 (2010) 738.

[14] G. Ahn, D.M. Park, J.W. Park, H.Y. Kim, J.Y. Cho, S.J. Rhee, I.J. Jang, H.K. Kim, *Biomed Chromatogr* (2014).

[15] H. Minderman, K.L. O'Loughlin, L. Pendyala, M.R. Baer, *Clin Cancer Res* 10 (2004) 1826.

[16] A.M. Di Francesco, A. Riccardi, G. Barone, S. Rutella, D. Meco, R. Frapolli, M. Zucchetti, M. D'Incalci, C. Pisano, P. Carminati, R. Riccardi, *Biochem Pharmacol* 70 (2005) 1125.

[17] G. Boyd, J.F. Smyth, D.I. Jodrell, J. Cummings, *Anal Biochem* 297 (2001) 15.

[18] Z.P. Hu, X.X. Yang, X. Chen, E. Chan, W. Duan, S.F. Zhou, *J Chromatogr B Analyt Technol Biomed Life Sci* 850 (2007) 575.

[19] C. Kitromilidou, E. Ghazaly, S. Joel, T. Powles, *Annals of Oncology* 23 (2012) 35.

[20] C. Kitromilidou, D. McDonald, P. Cutillas, E. Ghazaly, J. Perry, B. Csaba, S. Joel, T. Powles, *Cancer Research* 72 (2012) 1792.

- An UPLC-MS/MS method was developed for measuring intracellular concentrations SN-38
- SN-38 was separated using a pentafluorophenyl UPLC column
- Fast analysis and good peak shape obtained without the need for ion-pairing agents.
- Method was used to investigate SN-38 efflux in colorectal cancer cell lines.
- The method results were compared to a validated HPLC- fluorescent method.

Figure 1A)

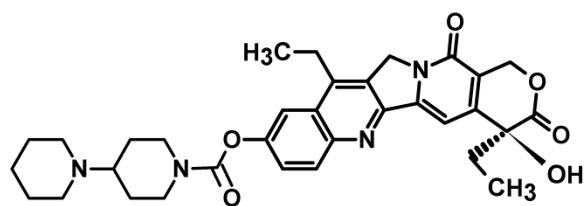
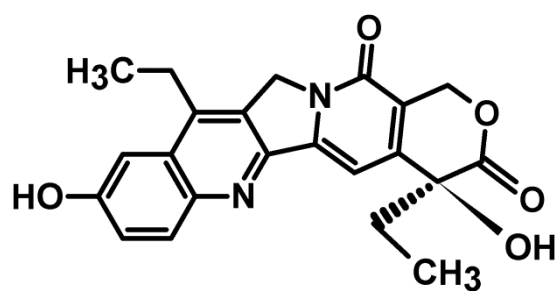
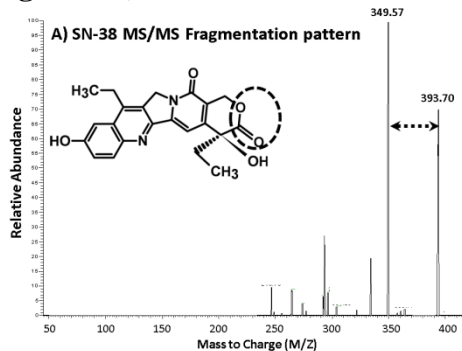


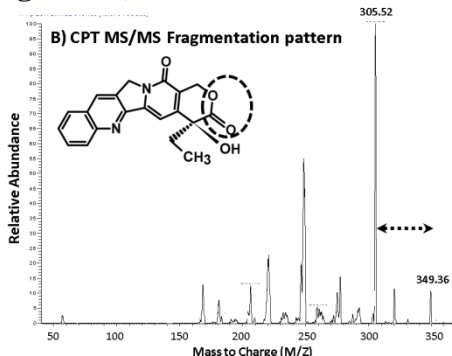
Figure 1B)



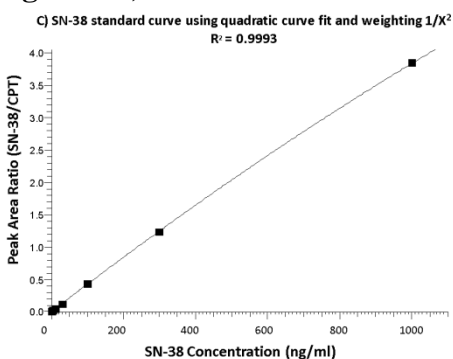
**Figure 2A)**



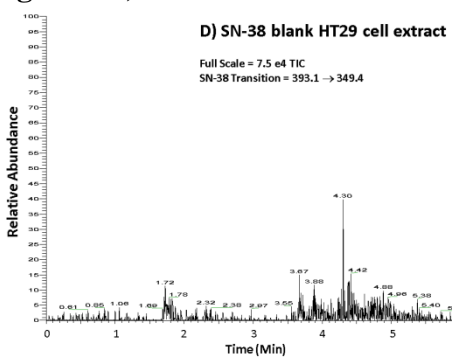
**Figure 2B)**



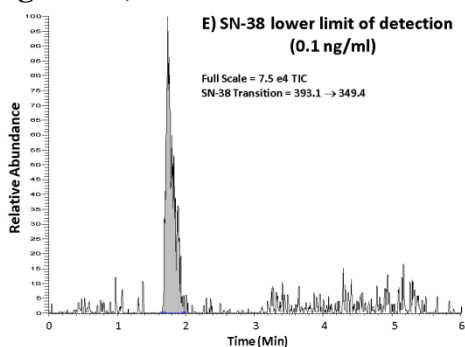
**Figure 2C)**



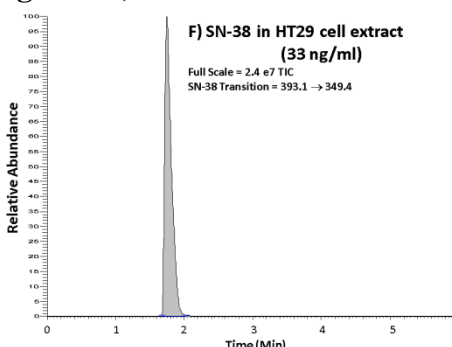
**Figure 2D)**



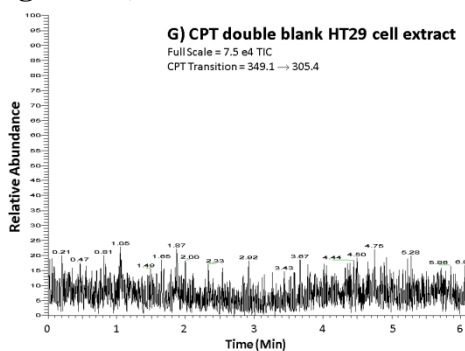
**Figure 2E)**



**Figure 2F)**



**Figure 2G)**



**Figure 2H)**

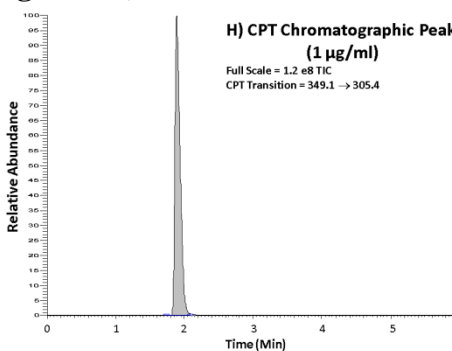


Figure 3A)

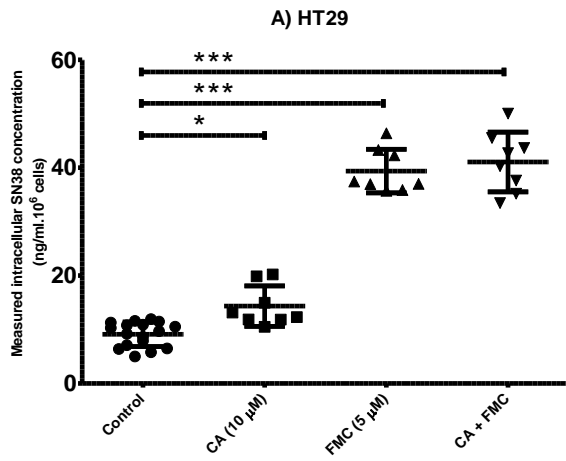


Figure 3B)

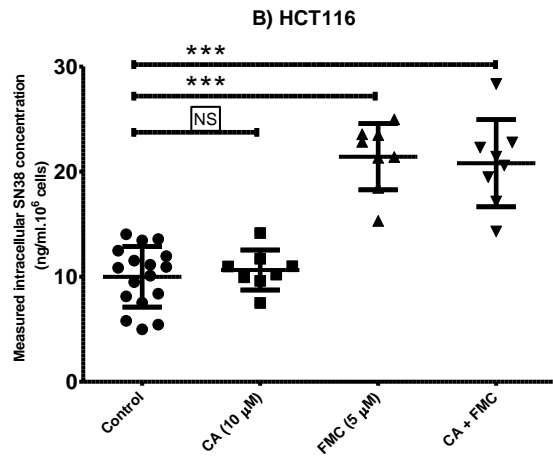


Figure 3C)

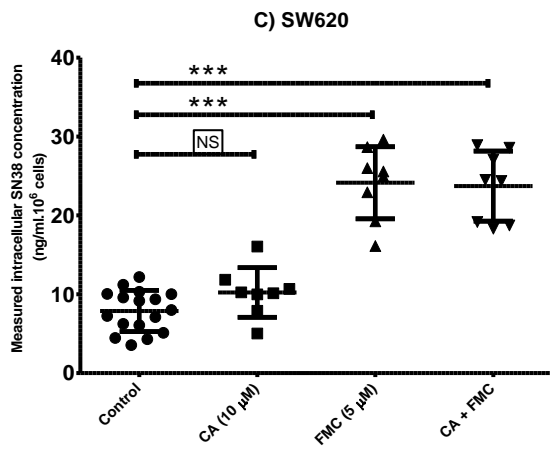


Figure 3D)

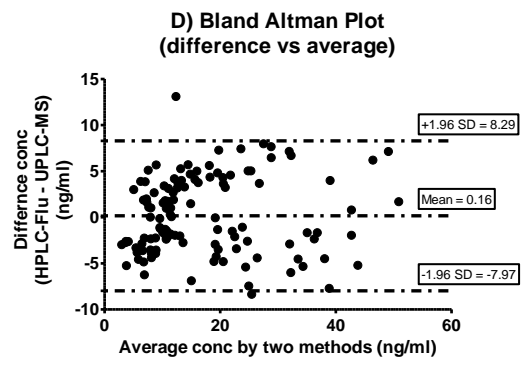




Table 1, Measured Vs Theoretical concentrations of SN-38 standards along with Imprecision (CV) and Inaccuracy (percentage error).

Theoretical Standards	Mean of the Measured standards	Imprecision (CV)	Inaccuracy (Error %)
0.1	0.11	34.1	6.2
0.3	0.33	8.2	8.9
1	0.98	8.9	-2.2
3	3.06	7.3	1.9
10	9.34	7.8	-6.6
30	30.41	8.1	1.4
100	95.58	7.4	-4.4
300	306.21	7.0	2.1
1000	965.74	3.0	-3.4

Table 2. Intra- and inter-day imprecision of SN-38.

	Intraday (n=6)			Interday (n=6)		
	LQC	MQC	HQC	LQC	MQC	HQC
Theoretical value (ng/ml)	5.0	50.0	500.0	5.0	50.0	500.0
Mean measured value (ng/ml)	5.1	48.5	492.0	5.1	49.4	491.5
SD	0.3	0.9	23.5	0.5	1.5	35.1
Imprecision (CV)	6.0	1.9	4.7	9.2	2.9	7.1
Inaccuracy (Error %)	1.2	3.0	-1.6	1.9	-1.2	-1.7

Table 3. SN-38 stability experiments carried out on 3 cycles over a period of 90 days.

	Std 30	Std 3
Cycle 1	32.715	3.097
Cycle 2	30.93	3.16
Cycle 3	32.40	3.14
Mean	32.01	3.13
Std	0.95	0.03
Imprecision (CV)	2.98	0.95
Inaccuracy (Error %)	-2.01	-0.13