



Strathprints Institutional Repository

Wood, Sarahjane and Halbert, G. W. and Florence, A. (2016) Achieving immediate release dosage forms using DoE and injection moulding. In: First I2APM International Symposium, 2016-11-30 - 2016-12-01, University of Strathclyde. ,

This version is available at <http://strathprints.strath.ac.uk/59592/>

Strathprints is designed to allow users to access the research output of the University of Strathclyde. Unless otherwise explicitly stated on the manuscript, Copyright © and Moral Rights for the papers on this site are retained by the individual authors and/or other copyright owners. Please check the manuscript for details of any other licences that may have been applied. You may not engage in further distribution of the material for any profitmaking activities or any commercial gain. You may freely distribute both the url (<http://strathprints.strath.ac.uk/>) and the content of this paper for research or private study, educational, or not-for-profit purposes without prior permission or charge.

Any correspondence concerning this service should be sent to Strathprints administrator: strathprints@strath.ac.uk

Sarahjane Wood¹, G.W. Halbert^{1,2} & A. Florence¹

¹The EPSRC Centre for Innovative Manufacturing in Continuous Manufacturing and Crystallisation, The Strathclyde Institute of Pharmacy and Biomedical Sciences, The University of Strathclyde, Glasgow, UK.

²The Cancer Research UK Formulation Unit, the Strathclyde Institute of Pharmacy and Biomedical Sciences, the University of Strathclyde, Glasgow, UK.

Workflow:



Powder blends



Hot Melt Extrusion



Extrudate



Injection Moulding



Dosage forms

Aim: to produce a solid oral dosage form that is both immediate release and has a homogeneous API dispersion

Polymer problem:

- Dosage forms produced using polymers via 3D printing or Injection Moulding do not behave in the same way as standard compressed powder tablets.
- Compressed powders have the ability to break apart of disintegrate increasing the particle surface area to produce an immediate release of API
- Due to the complex polymer matrix this does not occur but instead either swelling of the polymer where the drug can diffuse out or a slow erosion process
- Both these methods can hinder the release of drug
- To try and increase drug release rates disintegrating agents can be introduced to the formulation which can either produce larger holes within the polymer matrix when the agent dissolves or quicken the erosion process
- This study investigates a variety of disintegrating agents and small molecules to assess their suitability to increase the rate of the erosion process of Polyvinyl Alcohol (PVA)

DSC:

- The figure on the left (figure 4a) shows the DSC trace for the first heating cycle.
- A small endotherm can be observed at approximately 117°C corresponding to the melting of Carvedilol. The peak is of relatively low intensity due to the small concentration of drug present in the powder blend.
- The second heat cycle on the right (figure 4b) shows no events due to the drug becoming amorphous and dissolving into the polymer.
- There is no degradation occurring for any of the disintegrating agents.
- DSC traces were obtained for raw PVA at different molecular weights (data not shown) to determine which to use in the DoE. From this and solubility data PVA at Mw 13,000 was chosen.

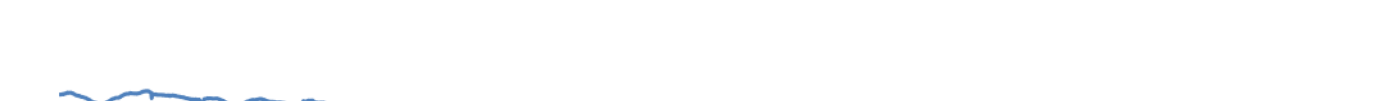
Cellulose Blend 1st Heat Cycle

30 80 130 180



Cellulose Blend 2nd Heat Cycle

30 80 130 180



Glycine Blend 1st Heat Cycle

30 80 130 180



Glycine Blend 2nd Heat Cycle

30 80 130 180



Figure 3a: DSC traces for Cellulose blend (top) and Glycine blend (bottom) obtained from the first heat cycle 20-200°C

Figure 3b: DSC traces for Cellulose blend (top) and Glycine blend (bottom) obtained from the second heat cycle 20-200°C

Hot Stage Microscope:

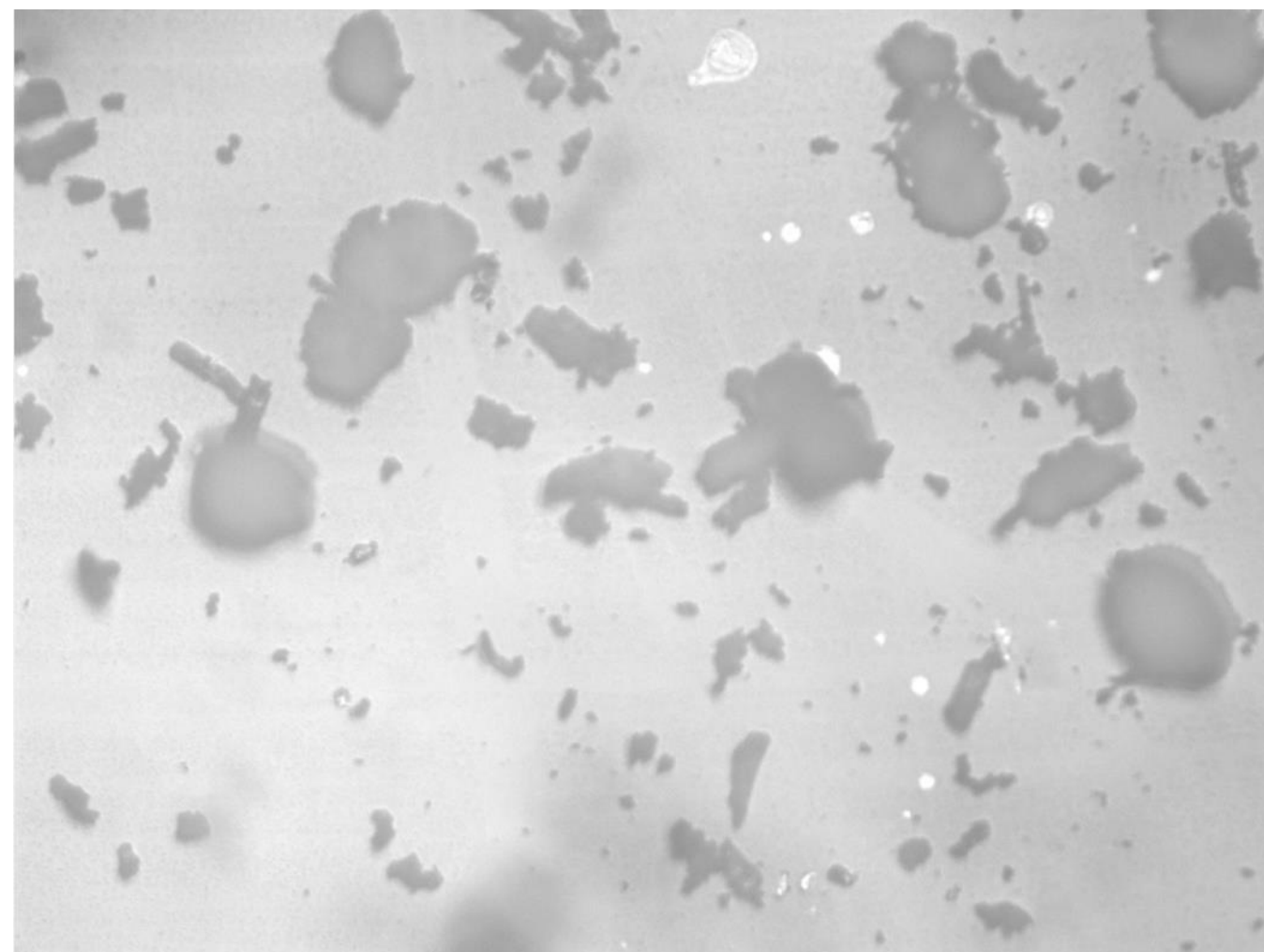


Fig 1a: Cellulose before heating

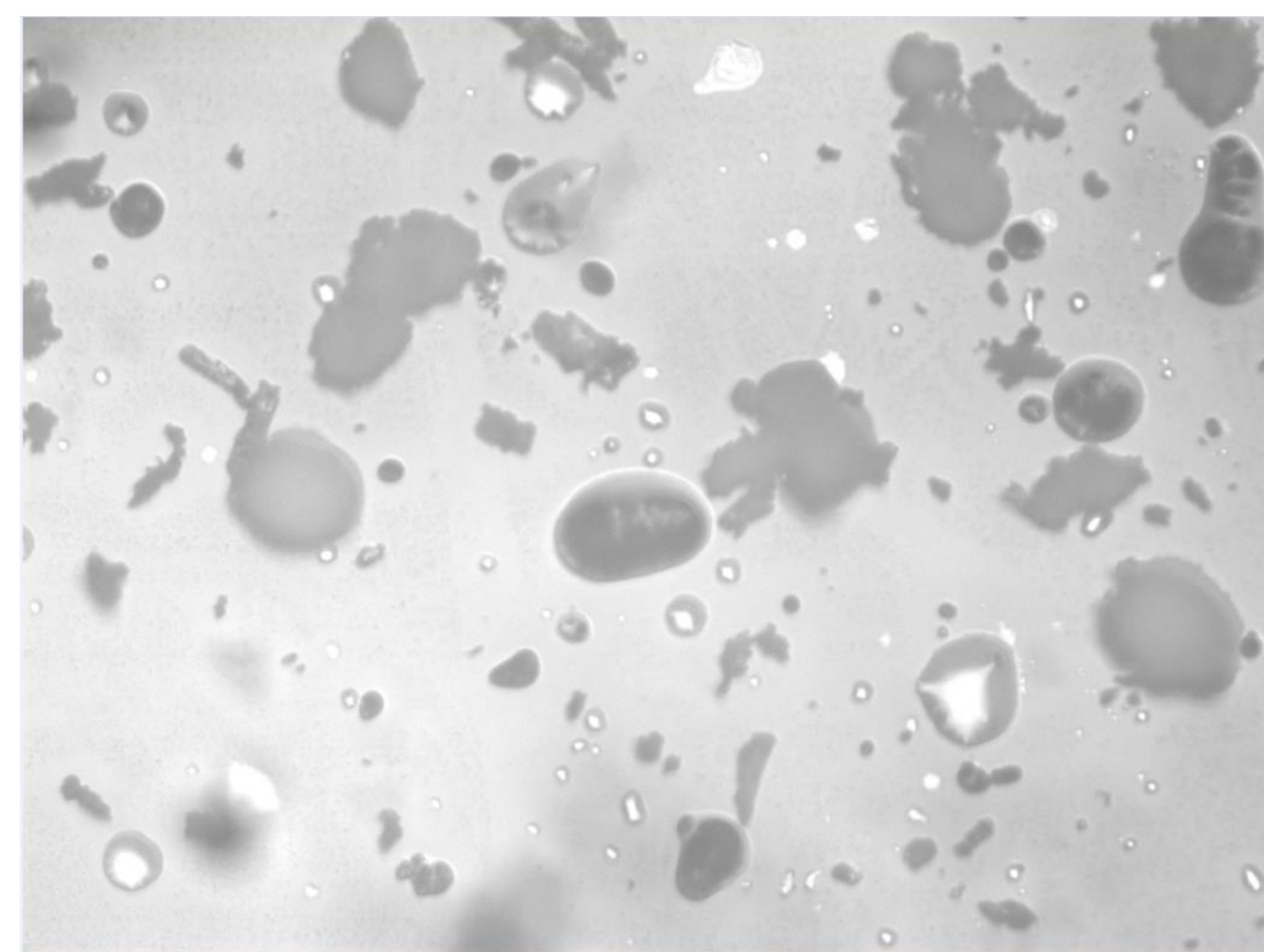


Fig 1b: Cellulose blend showing the melting of carvedilol



Fig 1c: Glycine at 200°C before hold time

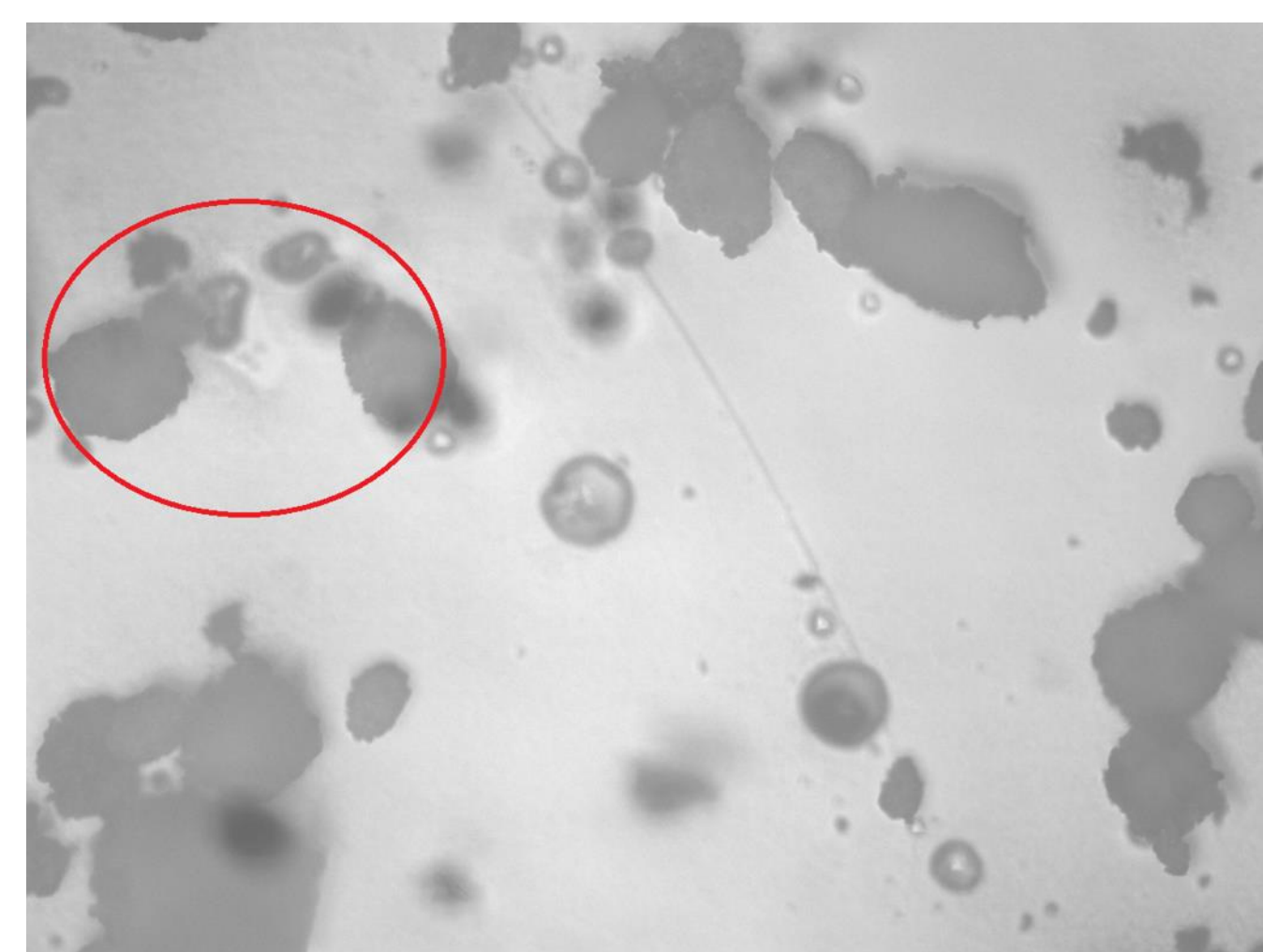


Fig 1d: Glycine at 200°C after hold time

The melting of carvedilol (approx. 117°C) was observed for all powder blends as expected according to the DSC traces (figure 3). However other events could be seen as the temperature reached the maximum 200°C for blends containing Glycine and Klucel HXF. This is assumed to be degradation of the disintegrating agent.

Design of Experiments:

Figure 2: After excluding 3 disintegrating agents from the initial DSC and HSM screen: NaCl, Glycine, Cellulose, Klucel ELF and Klucel HXF will be further analysed for their effectiveness as a disintegrant

Exp No	Exp Name	Run Order	Incl/Excl	API (%)	Disintegrating Agents (%)
1	N1	6	Incl	1	0
2	N2	5	Incl	20	0
3	N3	3	Incl	1	10
4	N4	4	Incl	20	10
5	N5	2	Incl	10.5	5
6	N6	1	Incl	10.5	5

Conclusion & Future Work:

- Using the combination of HME and Injection Moulding solid oral dosage forms can be produced however due to compaction pressure and the slowly eroding properties of the polymers-immediate release can be difficult to achieve.
- Introducing disintegrating agents to the formulation is one possible route of increasing the dissolution of the dosages.
- Design of Experiments is a useful statistical tool to obtain the most information from a minimum number of experiments.
- The DSC and Hot Stage Microscope indicated that all agents chosen were compatible at the temperature chosen to extrude at.
- A pharmaceutically irrelevant compound, small molecule, natural polymer and high and low molecular weight synthetic polymers were chosen.
- The next steps is to extrude the formulations mentioned in figure 3 and to measure the disintegrating time of the strand produced.

Acknowledgments:

The author would like to thank Elanor Brammer, Dr Tariq Islam and Prof. Gavin W. Halbert for their work and expertise on this project. An acknowledgement also to Ashland for supplying materials used in this study. Also a thank you to the EPSRC Doctoral Training Centre for Innovative Manufacturing in Continuous Manufacturing and Crystallisation for funding this work.

References:

1. Claeys, B., Bruyn, S. D., Hansen, L., Beer, T. D., Remon, J. P., and Vervaeck, C. (2014). "Release characteristics of polyurethane tablets containing dicarboxylic acids as release modifiers – a case study with diprophylline." *International Journal of Pharmaceutics*, 477(1-2), 244-250
2. Claeys, B., Vervaeck, A., Hillewaere, X. K. D., Possemiers, S., Hansen, L., De Beer, T., Remon, J. P., and Vervaeck, C. (2015). "Thermoplastic polyurethanes for the manufacturing of highly dosed oral sustained release matrices via hot melt extrusion and injection molding." *European Journal of Pharmaceutics and Biopharmaceutics*, 90, 44-52.
3. Quinten, T., Andrews, G., Beer, T., Saerens, L., Bouquet, W., Jones, D., Hornsby, P., Remon, J., and Vervaeck, C. (2012). "Preparation and Evaluation of Sustained-Release Matrix Tablets Based on Metoprolol and an Acrylic Carrier Using Injection Moulding." *AAPS PharmSciTech*, 13(4), 1197-1211.
4. Quinten, T., Gonnissen, Y., Adriaens, E., De Beer, T., Cnudde, V., Masschaele, B., Van Hoorebeke, L., Siepmann, J., Remon, J. P., and Vervaeck, C. (2009). "Development of injection moulded matrix tablets based on mixtures of ethylcellulose and low-substituted hydroxypropylcellulose." *European journal of pharmaceutical sciences : official journal of the European Federation for Pharmaceutical Sciences*, 37(3-4), pp.207-216