



## Strathprints Institutional Repository

**Telford, Rory and Galloway, Stuart and Stephen, Bruce and Elders, Ian (2016) Diagnosis of series DC arc faults - a machine learning approach. IEEE Transactions on Industrial Informatics. ISSN 1551-3203 (In Press) ,**

This version is available at <http://strathprints.strath.ac.uk/58843/>

**Strathprints** is designed to allow users to access the research output of the University of Strathclyde. Unless otherwise explicitly stated on the manuscript, Copyright © and Moral Rights for the papers on this site are retained by the individual authors and/or other copyright owners. Please check the manuscript for details of any other licences that may have been applied. You may not engage in further distribution of the material for any profitmaking activities or any commercial gain. You may freely distribute both the url (<http://strathprints.strath.ac.uk/>) and the content of this paper for research or private study, educational, or not-for-profit purposes without prior permission or charge.

Any correspondence concerning this service should be sent to Strathprints administrator: [strathprints@strath.ac.uk](mailto:strathprints@strath.ac.uk)

# Diagnosis of Series DC Arc Faults – A Machine Learning Approach

Rory Telford, Stuart Galloway, Bruce Stephen, *Senior Member, IEEE*, and Ian Elders

**Abstract**— Increasing prevalence of DC sources and loads has resulted in DC distribution being re-considered at a micro-grid level. However, in comparison to AC systems, the lack of a natural zero crossing has traditionally meant that protecting DC systems is inherently more difficult – this protection issue is compounded when attempting to diagnose and isolate fault conditions. One such condition is the series arc fault, which poses significant protection issues as their presence negates the logic of overcurrent protection philosophies. This paper proposes the *IntelArc* system to accurately diagnose series arc faults in DC systems. *IntelArc* combines time-frequency and time domain extracted features with hidden Markov models to discriminate between nominal transient behavior and arc fault behavior across a variety of operating conditions. Preliminary testing of the system is outlined with results showing that the system has the potential for accurate, generalized, diagnosis of series arc faults in DC systems.

**(Index Terms)** – Fault diagnosis, arc discharges, DC power systems, hidden Markov models, wavelet transforms

## I. INTRODUCTION

The prevalence of DC distribution is a consequence of an increasing reliance on distributed renewable energy sources, higher penetrations of electric vehicles and storage systems, and an overall rise in DC loads such as computers, solid-state lighting and building networks [1]. This prevailing trend is not limited to land-based systems, as attempts to further optimize aircraft [2] and shipboard systems [3] using the more-electric and all-electric concepts has also given rise to an increased dependence on DC distribution within such ad-hoc configurations. In general, employing DC distribution over AC has the potential to reduce losses in feeders, provide improved power quality, enhance reliability and reduce the number of power conversion stages [4]. However, ensuring that the distribution network is properly protected throughout fault conditions is a principal challenge which must be addressed before these perceived benefits are fully realized. It is well established that the lack of a natural zero crossing means that the protection of DC systems is inherently more difficult to achieve in comparison to AC systems [5]; furthermore, protecting DC systems from fault conditions that have traditionally been difficult to detect exacerbates this protection challenge. The series arc fault is one such fault condition that poses significant protection issues [6].

Series arc faults occur in series with loads at unintended points of discontinuity within an electrical circuit [7]. These circuit imperfections often emerge as a contact separation or

loose connection– in harsh operating environments vibration often results in series arcing exhibiting intermittent behavior.

These faults introduce additional impedance between source and load, and the resultant decrease in network current means they are particularly difficult to detect using conventional overcurrent protection practices. At DC levels, the increased probability of a sustained arcing event means they present a significant fire hazard. Their presence has been known to affect the secure and reliable distribution of power in photovoltaic [8], aircraft [9], and shipboard [10] systems.

Previous systems have been developed that aim to detect the onset of series arc fault conditions, however, major challenges still exist with regards to increasing overall accuracy of detection and establishing generalized systems that can accurately diagnose faults across a variety of operating conditions. This paper proposes *IntelArc*, an intelligent diagnostic system that aims to address these challenges. *IntelArc* is based on the Hidden Markov Model (HMM) [11], and uses features extracted from network data in both the time and time-frequency domains.

The next section of the paper describes arc faults, including difficulties in detecting series conditions and previously proposed diagnostic systems. Section III discusses the suitability and benefits of using HMM for arc fault diagnosis (AFD). Section IV describes the method of the *IntelArc* system, and elaborates on: an arc fault model used for generation of synthetic training data; extraction and selection of fault features from the training data; and, HMM training. Section V uses two case studies to test and validate the *IntelArc* method and conclusions are provided in Section VI.

## II. SERIES ARC FAULTS & EXISTING DIAGNOSTIC SYSTEMS

Normal arcing events occur during mechanical switching operation of circuit breakers and contactors [12] – these devices are designed to withstand arc formation and normal arcing is typically highly transient and unsustainable. Conversely, arc current through ionized gas during fault events may be fully sustained; the high heat generated can lead to partial volatilization of the conductors and increases the risk of fire to surrounding insulation [13]. There are many conditions which may cause an arc fault, including [7]:

- Chemical, electrical and mechanical deterioration of wiring and interconnections.
- Presence of moisture or fluids on the insulation enabling leakage currents to create small electrical discharges across voids to other conductors: this condition is termed *wet arc tracking*.
- Loose terminal connections.

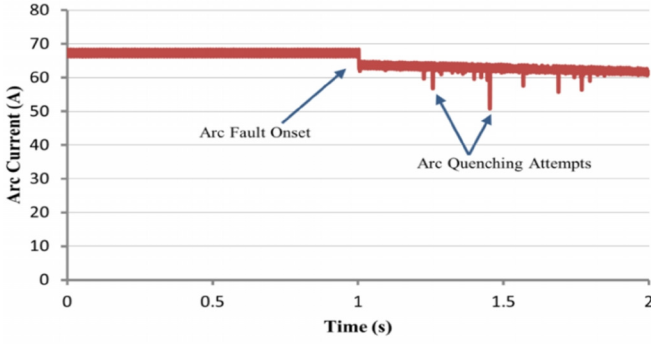


Fig. 1: Example of a sustained series arc current waveform.

Arc faults are categorized as either parallel or series - this paper focuses solely on the detection and diagnosis of series arc fault conditions. Series arcing usually begins with either chemical corrosion of pin-socket connections or loose connections in series with loads. A significant detection issue with the series arc fault is the fact that, as the ionized gap is in series with the load, fault current actually decreases below load rated current and well below relay trip curves.

In DC supplied systems there is no natural current zero. As a result, arcing conditions are more sustainable and, potentially, more dangerous - a typical series arc current waveform in a DC system is illustrated in Fig. 1, where arcing over a sustained period is evident. This waveform was captured using a network model of a 270VDC rectifier interfaced system supplying a purely resistive load - the fault model described in Section IV (A) was implemented in this network model to characterize arc fault conditions. The hazards that series DC arc fault events pose to safety and reliability of supply, combined with the associated detection difficulties, has resulted in significant scope for the development of accurate diagnostic systems to mitigate their impact.

Systems for diagnosing arc faults are classified as either mechanical or electrical [14]. Electrical based systems extract arc features in the time [15], frequency [16] or time-frequency [17] domains, and algorithms analyze these extracted features to determine the presence of arcing events. The transient, non-stationary, characteristics of arcing conditions means that systems that rely on time-frequency domain extractions hold the most promise for accurate diagnosis of arc fault conditions.

Series DC AFD systems based on all three feature extraction methods have been proposed in the literature. Guo *et al.* [18] defined a system that identifies a period of time between a sudden drop in load current and arc ignition as an arc precursor time. Kilroy *et al.* [19] developed a system based on averaging load current signals over time periods. Momoh [20] proposed a system that used spectral energy from nominal and fault events to train separate artificial neural networks (ANN). Other time domain and frequency domain series DC AFD methods are outlined in [21-23]. Yunmei *et al.* [24] described a system based on time-frequency domain features that utilized the energy of extracted wavelet transform (WT) [25] coefficients for fault diagnosis. Yao *et al.* [26] developed a system based on time and time-frequency features for

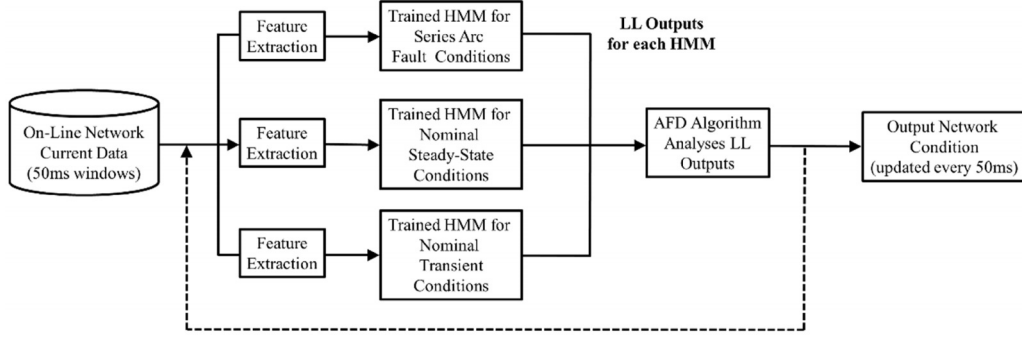
application to representative DC microgrid networks. The system used statistics calculated from current data, and coefficients extracted using the WT, for fault diagnosis.

Despite the development of multiple AFD systems, major challenges still exist concerning maintaining high diagnostic accuracy across a range of operating conditions. Accurately diagnosing faults that are often highly intermittent and cause reductions in system current is already a difficult task - attempting to develop an accurate and generalized diagnostic system is a significant challenge. Reliance on algorithms that compare extracted features with basic thresholds, as the majority of these systems do, will not suffice in meeting this challenge based on robustness to noise alone. Consequently, this paper proposes IntelArc, a machine learning (ML) based system that uses extracted features to train HMM and increases the potential for an accurate and generalized diagnostic performance.

### III. HMM BASED ARC FAULT DIAGNOSIS

A range of ML techniques have the potential to diagnose series DC arc faults, including; ANN [20], support vector machines (SVM) [27] and Bayesian networks [28]. HMMs [11] can be used in classification problems associated with noisy time-series data even though they do not have exact domain knowledge of the problem [29]. Traditional applications of HMM are in speech, handwriting and gesture recognition [30]. More recently, they have been applied in classifying patterns in process trend analysis [31], machine condition monitoring [29] and AC transmission/distribution networks [32, 33] - they have not previously been applied for diagnosis of series DC arc faults. HMMs assume that the system modeled is a Markov process with unobserved (*hidden*) states, and that system data is a noisy observation of this process.

The main benefit of applying HMMs in this application area is their suitability for detection of non-stationary signals - this feature makes them ideal for diagnosis of faults that exhibit highly transient characteristics. The flexible choice of observation model, a Gaussian mixture distribution for example, makes them robust to noise and removes the need for normalization constants, which could otherwise result in different scaling factors between training and test data sets, hampering generalization capability. As probabilistic models, HMMs also provide a log-likelihood (LL) metric that quantifies the probability of various fault hypotheses - this form of diagnostic explanation is not provided by ANNs for example, which would only provide a binary classification or regression with no accompanying confidence metric. The probabilistic formulation is also attractive from the perspective of combining models, which can be performed through well-understood axioms of probabilistic inference. An HMM based system is also highly scalable and can be readily updated (i.e. without retraining multiple models) to include models of emergent system conditions. Through formal model selection procedures, over-fitting of HMMs can be avoided - while choice of the most likely model could be by optimizing LL, using Bayesian information criterion (BIC) [30] instead ensures the fit is not overly representative of the training examples by penalizing model complexity.



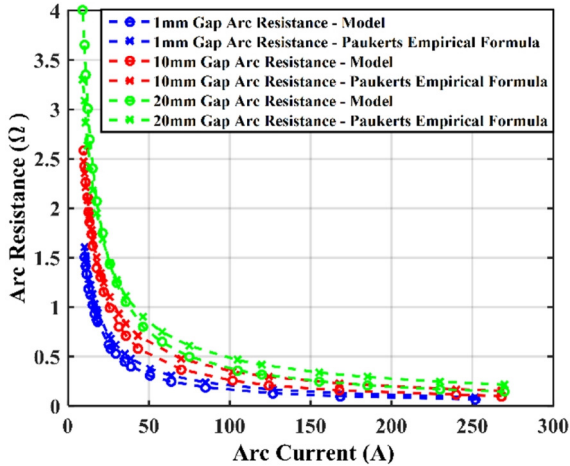
**Fig. 2:** Outline of IntelArc method - only three trained HMM are illustrated for brevity: these relate to models of nominal steady-state, nominal transient and series arc fault conditions respectively. In practice, further HMM relating to different conditions could be trained and implemented within the framework

#### IV. INTELARC – METHOD OVERVIEW

Fig. 2 outlines the method of the proposed IntelArc system. The system utilizes a framework of trained HMM relating to different network conditions. Features are extracted from windows of network current data and applied to each trained HMM within the framework for inference of series arc faults. Current can be sampled at various locations throughout the network and each load current window covers 50ms of system operation. Each HMM outputs a LL measure which quantifies the similarity of on-line data with the trained parameters of the HMM. An algorithm analyses the LL output of each HMM every 50ms, and the system outputs an alarm if there is sufficient evidence to suggest the presence of arc fault conditions – 50ms was deemed a sufficient length of time to safely diagnose and isolate arcing conditions and also decrease the probability of false detections. The process is repeated as new windows of current data become available.

##### A. Generation of Arc Fault Data

A software model was used for generation of arc fault data. The model was proposed by Uriarte *et al.* - a complete description of the model is provided in [34]. The model was designed to represent arcing conditions between electrodes that separate at a constant speed and eventually dwell at a fixed distance. Arc voltage, current, and resistance outputs were compared to similar DC arc models within literature [35] to assess similarity and thus ensure that it is accurately representative of series DC arc conditions.



**Fig.3:** Comparison of model outputs with Paukert's formulas.

The model is a hyperbolic approximation of dynamic arc voltage and current that assumes arc impedance is predominantly resistive. Non-intermittent fluctuations in voltage and current are used to represent unsuccessful quenching attempts. Arc voltage gradient of the model i.e. how voltage varies with arc gap was compared with previously defined values by both Browne (12V/cm) [36] and Strom (13.4V/cm) [35].

Average gradient of the model was  $\approx 10\text{V/cm}$ . Despite exhibiting slightly lower values, there is agreement with Browne and Strom's models, particularly for smaller electrode gaps.  $V-I$  characteristics of fixed length arcs are generally considered to be inverse and non-linear below a current transition level. For arc currents above this level (which is defined to be in the region of 10-13A for small electrode gaps [37]), voltage increases only minimally with current. Evaluation of model  $V-I$  behavior showed minimal agreement with lower current characteristics, although it did accurately characterize voltage for current ranges above the transition level. In this sense, an associated caveat of the model is that voltage output at arc currents below  $\approx 10\text{A}$  are less accurate.

Paukert [38] defined a formula that quantified arc impedance; a comparison between model impedance and this formula for various electrode gaps is provided in Fig. 3. The general non-linear characteristic of arc impedance was captured within the model where resistance increases significantly at lower current values and becomes almost constant at higher current. There is also acceptable agreement with Stokes, albeit with arc resistance slightly lower for corresponding current magnitudes – this suggests that arc voltage magnitude is slightly lower than the empirical formula proposed.

Arcing current frequency spectrums up to 200 kHz were observed within data simulated in the basic system model described in the following sub-section using the fast Fourier transform (FFT) – spectrums across different fault conditions are illustrated in Fig. 4. Analysis of the spectrums highlighted greater energy content at higher harmonic levels under arcing conditions in comparison to nominal background noise. Indeed, there is roughly a 25dB disparity at a frequency as low as 10 kHz. FFT results were comparable to those presented in [39]. Overall, these comparisons validate accuracy of the fault model with a sole inconsistency concerning  $V-I$  characteristics at low current levels. However, voltage gradients, arc

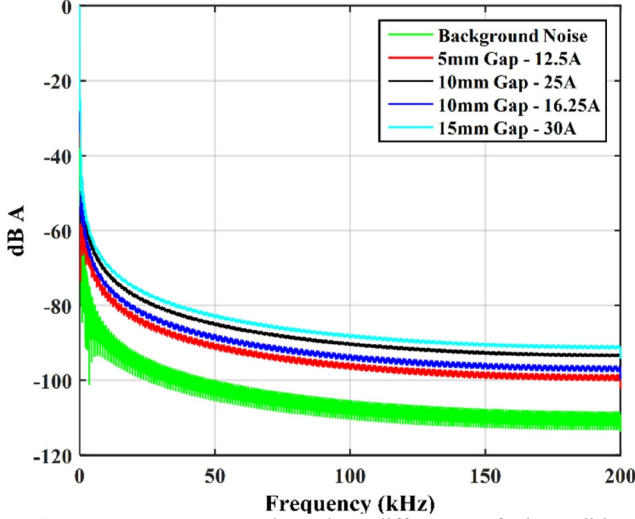


Fig. 4: Frequency spectrums throughout different arc fault conditions.

impedance and frequency characteristics showed relative agreement. Generation of intermittent series fault data was required to test IntelArc's ability to accurately diagnose intermittent events. Hence, the sustained fault model proposed in [34] was extended to include fault intermittency. This extension includes functionality that randomly switches the voltage developed across a sustained arc fault from arc voltage to zero to represent intermittent separation of contactors – the process of initiating a sustained fault and then switching voltage across the fault to zero at a random time after fault onset can be reproduced multiple times throughout one simulation run of the model to create intermittent conditions.

#### B. Arc Fault Feature Extraction & Selection

In ML based diagnostic systems, features extracted from data should be optimally discriminative between the different conditions/behaviors under consideration [40]. Extracting features in the time-frequency domain highlights the frequency components that are present at particular points of time in a signal - the transient characteristics of arc faults means that, theoretically, there should be relatively significant differences between the time-frequency extracted features of nominal and fault conditions. The discrete WT (DWT) extracts different bands of frequencies from a signal through successive filtering and down-sampling. Different bands of high frequencies are output as *detail coefficient* levels whereas bands of low frequencies are output as *approximate coefficient* levels [41]. Analyzing how the detail and approximate coefficient levels vary throughout different system conditions was the main goal of feature selection. For further information on DWT theory refer to [41].

Training data was simulated using a basic system model comprising a six pulse passive diode rectifier feeding an either purely resistive or reactive load. AC input to the rectifier was 230VAC, with frequency varying between 50-400Hz throughout different simulation runs, to provide 270VDC to the load. Fault conditions were initiated on the load feeder using randomized instances of the intermittent arc model described and validated in the previous sub-section: speed of electrode separation was randomized between 5 and 25mm/s, and the distance at which the electrodes dwell was randomized

between 1 and 15mm. System current is sampled at 20 kHz and has 5 kHz noise – the noise model is Gaussian distributed with 0 mean and 0.001 variance that is sampled every 20ms throughout each simulation to model sensor noise. 5 kHz was chosen as this lies in the middle of the observed 0-10 kHz bandwidth of a 20 kHz sampled signal. The following subsections describe feature extraction and selection from the simulated training data.

#### 1- Time-Frequency Domain Extraction – Approximate Coefficients

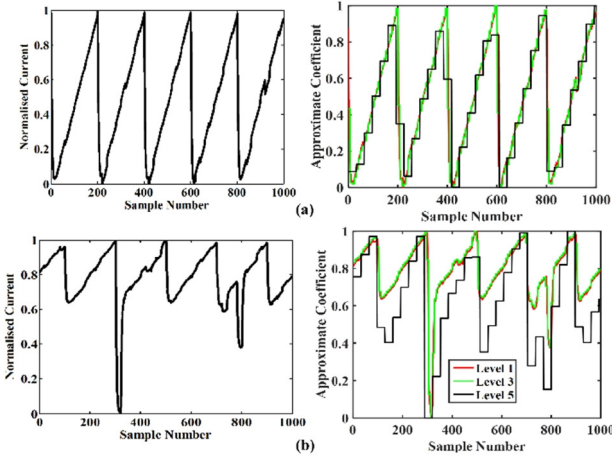
Fig. 5 (a) illustrates a training data example of a 50ms window of normalized system current throughout nominal conditions (left) with the associated level 1, 3 and 5 extracted DWT approximate coefficients (right). Transient features are ideally extracted using a DWT mother wavelet [46] that possesses sharp characteristics and, consequently, the db2 mother wavelet was selected. Coefficients were extracted from the current data using MATLABs wavelet toolbox [44]. DC ripple, as a result of an upstream rectifier, is evident in the sampled current. The approximate coefficients extract the time-frequency response across the lower frequency sub-bands and high frequency noise is filtered out as the levels increase and sub-bands get both lower and narrower. In contrast, Fig. 5 (b) shows an example of normalized current data during arc fault conditions with associated extracted approximate coefficients. The sudden decrease in load current is a result of an unsuccessful quenching attempt that, in comparison to Fig. 5 (a), significantly changes the magnitude and shape of the approximate coefficients during fault conditions.

Diagnostic systems based on HMM rely on features that capture temporal dynamics – modeling the distribution of the approximate coefficients using a Gaussian mixture model (GMM) [30] enables the dynamics of each coefficient to be assessed through designation of each data sample to a particular mixture. As an example, GMMs of approximate level 1 coefficients were developed using the nominal and series arc fault training data to analyze the dynamics across each condition and determine features that increase discrimination capabilities - these are illustrated in Fig. 6 (a) and Fig. 6 (b) respectively. The following steps were undertaken throughout GMM development:

- Analysis of the distribution of DWT coefficients for each condition - a non-parametric Kernel density estimation was used to determine general shape of the distribution.
- Use of Gaussian distributions to analyse the probability of coefficients falling between specified ranges in the data - the example in Fig. 6 shows four different Gaussians that model the distribution of four different ranges in the data, although this number may vary depending on desired resolution.

Within the fault condition GMM there is significant disparity between the areas of each Gaussian mixture with an increased probability of coefficients exhibiting magnitudes close to one. In comparison to nominal conditions, the number of transitions between mixtures across a sequence of data samples is likely to be significantly less. These differing characteristics highlighted that approximate coefficients are a useful feature for discriminating between nominal and series





**Fig. 5:** Examples of DC current and associated DWT extractions for (a) nominal conditions and (b) arc fault conditions.

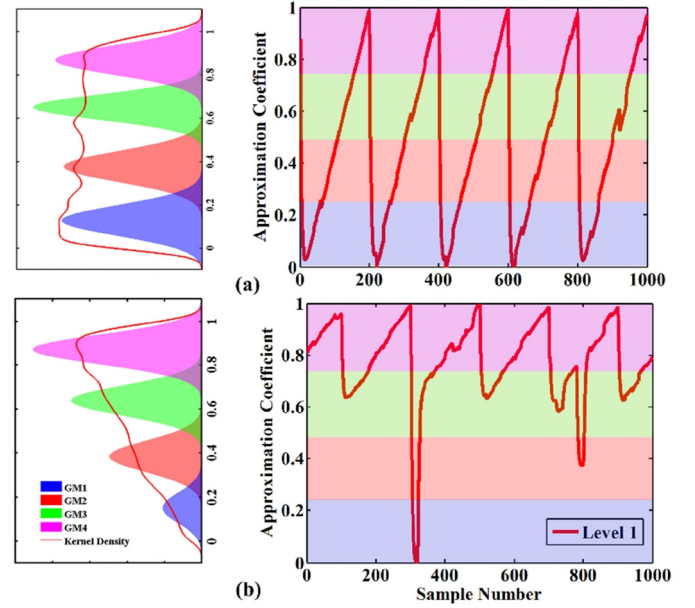
arc fault conditions. Selecting the levels of coefficients was necessary to optimize detection accuracy and limit feature redundancy. It was evident from analysis of the extracted DWT approximations that coefficients begin to level out as the levels increase and the frequency sub-bands get closer to zero – the examples in Fig. 5 emphasize the flatness of Level 5 coefficients in comparison to Levels 1 and 3. This is not ideal as the distributions begin to cluster within certain regions and this reduces the number of transitions during nominal conditions. Consequently, DWT approximate coefficient levels 1, 2 and 3 were selected as suitable features for AFD to minimize the effect of extremely low frequency bands on detection accuracy.

## 2- Time-Frequency Domain Extraction – Detail Coefficients

Transient arc fault signals contain high frequency components that are also potentially useful for detection. The DWT detail coefficients, which extract high frequency components, are therefore an important feature to consider. Similar to the case of approximate coefficients, it is necessary to select detail coefficients that optimally discriminate between various conditions.

Fig. 7 illustrates GMMs of detail level 1 coefficients for both nominal and fault conditions extracted from 50ms windows of normalized current data during each condition. Current during nominal conditions contains both DC ripple and measurement noise; DC ripple results in level 1 and 3 coefficient increases every 12.5ms (or 200 samples for a 20 kHz sampled signal). Measurement noise also increases the magnitude of detail coefficients although, as noise is random, the coefficient increases are less predictable. 5 kHz noise has a notable effect on level 3, whereas level 1 is less affected.

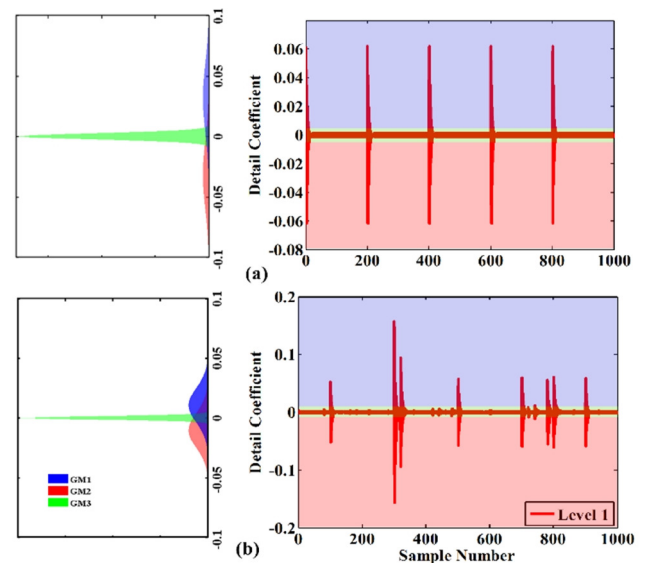
During fault conditions the detail coefficients are mainly affected by the arc fault transients, and coefficient increases are particularly evident at the lower levels - relative to nominal system conditions, coefficient magnitude increases at lower levels are significantly more prominent under fault conditions. The increased probability of higher coefficient magnitudes results in a greater number of transitions between mixture components in a GMM of fault conditions – in comparison, the GMM of nominal condition data has



**Fig. 6:** Model of the DWT approximate extractions using a GMM for (a) nominal conditions and (b) arc fault conditions.

significantly less transitions between mixtures. The differences in detail coefficients between conditions confirm they are an excellent feature for use in the HMM based IntelArc. Analysis of each detail level showed that levels 3-5 did not optimize discrimination between each condition as they do not capture the higher frequency transients present throughout arc fault events.

In practice, noise from power electronic converters will not be limited to 5 kHz and may be present across the entire 0-10 kHz observable bandwidth. Noise between 5-10 kHz will have an effect on lower level detail extractions; however, the salient higher frequency signatures of arcing will still be present within these features and they will remain useful for diagnosis. This is not the case at increased detail levels as the higher



**Fig. 7:** Model of the DWT detail extractions using a GMM for (a) nominal conditions and (b) arc fault conditions.

frequency components are filtered out - their inclusion in IntelArc will likely impair detection. Consequently, the number of DWT detail extractions is limited to lower levels with only levels 1 and 2 being selected as suitable features.

### 3- Summary of Arc Fault Feature Extraction and Selection

The process of modeling the probability distributions of extracted coefficients under different network conditions is critical for using HMM for AFD as it enables appreciation of the coefficient dynamics under each network condition and simplifies the HMM training stage. While previously proposed systems [26] have used WT extracted features for AFD, the studies outlined here, to the best of knowledge, are not available in literature.

The author's studies determined that the three approximate and two detail DWT coefficients extracted from system current with a 20 kHz sampling frequency would be utilized for series DC arc fault detection within the IntelArc system.

Time domain features were also extracted using statistical analysis of the windows of system current data. Specifically, a time domain feature based on a moving average across 50ms windows was extracted. Calculation of the moving average limits DC ripple and separates the normalized data into distinct regions for each condition. Signals are also generally smoother with the majority of high frequency noise removed. The feature is complementary to the WT coefficients as the general distinctions between nominal and fault conditions are highlighted.

### C. HMM Training

Feature selection determined that six feature vectors in total were used to train each HMM. These features included:

- DWT approximation coefficient levels 1, 2 and 3.
- DWT detail coefficient levels 1 and 2.
- Moving average of system current.

The number of hidden states and mixture components for each HMM within the system are summarized in Table I. The increased number of hidden states in the nominal steady-state model is a consequence of the WT approximation features as a greater number of states emphasize higher transition rates. Limiting the number of hidden states and mixture components of the fault and nominal transient models reduces the risk of over fitting the models to training examples; over fitting the nominal steady-state model is less of an issue as data under this condition is likely to be more consistent across a range of network scenarios. The Expectation-Maximization algorithm [30] was used for model training.

### D. AFD Algorithm

Accurate AFD within IntelArc is dependent on correct interpretation of the LL outputs of each trained HMM - this sub-section provides examples of these outputs throughout various network conditions and describes the algorithm for analyzing them to infer network condition. On-line application of IntelArc involves the use of features extracted from 50ms windows of current data being recursively applied to each trained HMM. Sliding windows with an interval of 10ms and overlap of 40ms are applied to the fault and nominal HMM,

TABLE I  
No. of Hidden States and Mixtures within each HMM.

HMM Model	No. of Hidden States	No. of Mixtures
Nominal Steady-State	10	10
Nominal Transient	4	4
Series DC Arc Fault	6	6

while 50ms consecutive windows are applied to the nominal transient HMM. The algorithm analyses the LL outputs of each HMM at 50ms intervals – hence five LL outputs from the nominal and fault models and one LL output from the nominal transient HMM are analyzed at each interval. The use of sliding windows is advantageous for detection of intermittent arc events as there is increased potential for detection of changes in fault current across shorter time frames.

Fig. 8 (a) illustrates a typical example of DC network current across steady-state, nominal transient and intermittent series arc fault conditions: a simple load switch models a nominal transient event and is evident at roughly 4 seconds while intermittent arcing events develop at roughly 9 seconds and results in periods of decreased system current. Both the duration of each intermittent fault event and the level of current reduction are variable, and the aim of the system is to diagnose these highly variable events in real-time. The corresponding LL outputs of each trained HMM are illustrated in Fig. 8 (b). The only points in time throughout the 10s period where the LL of the nominal model is not greater than both the fault and transient model LLs are during the load switching event and the intermittent arcing events.

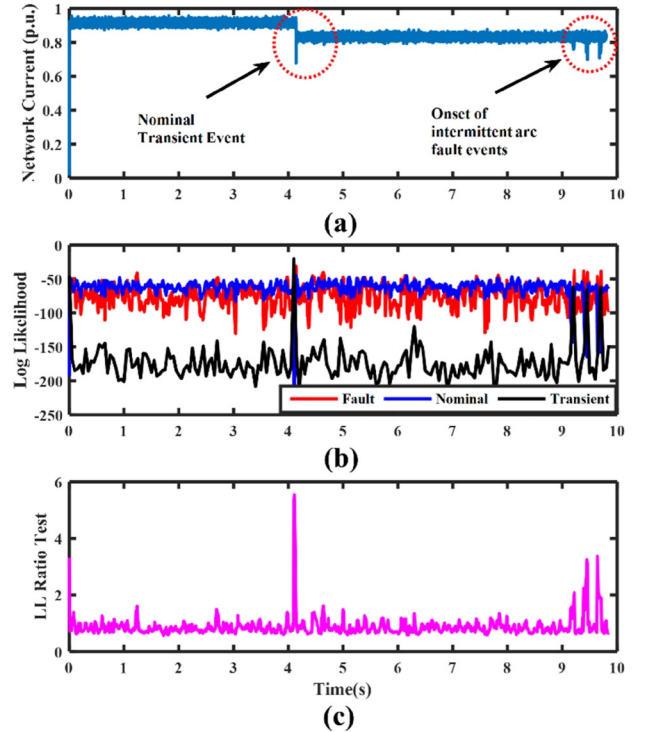


Fig. 8: (a) Example of network current throughout various conditions (b) corresponding LL outputs of trained HMM (c) LL Ratio Test. Note the increase at 4s caused by the nominal transient event – the corresponding LL increase of the transient model beyond the nominal and fault models at this point results in no fault being diagnosed.

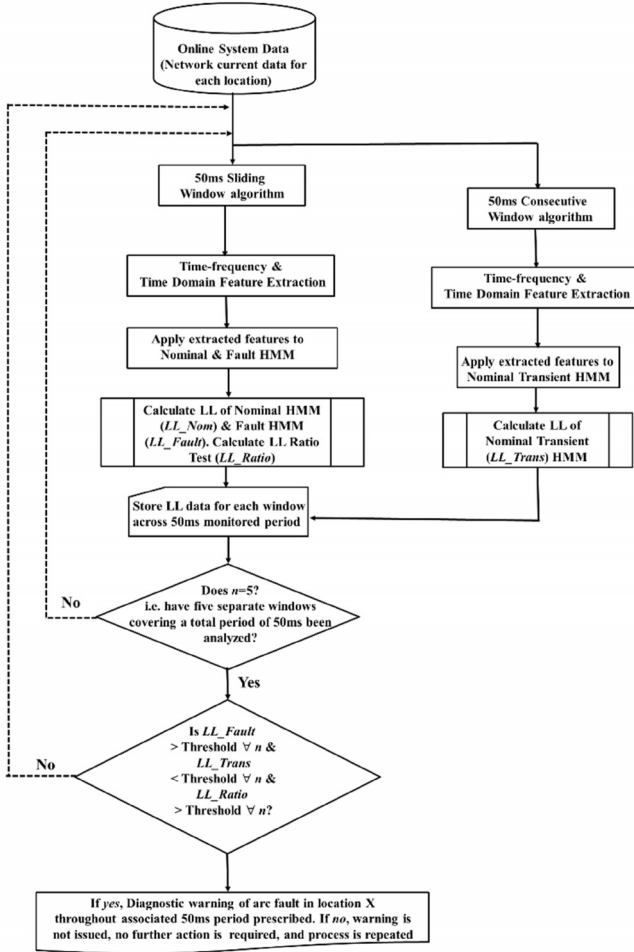


Fig. 9: Summary of the complete IntelArc method

During the load switching event, the LL of the nominal model decreases which could potentially indicate the presence of a fault; however, the simultaneous LL increase of the nominal transient model results in a fault not being diagnosed in this instance. In comparison, throughout the intermittent arcing events, the LL of the fault model increases beyond that of the nominal and transient models, which is indicative that arc fault conditions are present and hence diagnosis of a fault is prescribed by the system.

Another useful measure used that indicates an increased probability of fault presence is a LL ratio test [30] between the nominal and fault models – this ratio quantifies the difference between the two hypotheses, and points in time where it is greater than one may imply series arc fault conditions. An illustration of the LL ratio test for this example is provided in Fig. 8 (c).

A summary of the complete IntelArc method, including application of network data to each trained HMM and the algorithm for interpretation of the model outputs is illustrated in Fig. 9. The algorithm compares the LL outputs to predetermined thresholds to determine if there is a significant probability of series arc fault presence during each 50ms observational period. If all of the specifications described in Fig. 9 are not met, nominal operation is assumed.

Predetermined thresholds were set through analysis of HMM LL outputs across different operational scenarios.

Normalization ensures IntelArc is generally neutral to different levels of DC ripple and current magnitude. However performance may be affected by different forms of reactive loading. Differences in inductive and capacitive loading may impact setting of LL thresholds and it is therefore imperative that diagnostic performance is assessed across different types of load – the case studies in the following section investigate these issues.

## V. CASE STUDIES

The two case studies described in this section were used to evaluate and validate diagnostic accuracy of IntelArc. The basis of the first case study is the repeated injection of intermittent series arc faults into a DC power network model for generation of test data where the time of fault onset (s) is known; the test data is input to the system for inference of network condition, and its outputs are compared with known behavior to verify accuracy and detection time. The second case study used fault data generated using a representative DC testbed to test IntelArc accuracy.

### A. Case Study 1 - DC network model & testing methodology

The DC test network model on which arc faults were injected is illustrated in Fig. 10. MATLAB Simulink/SimPower Systems [48] and associated block libraries were used to model the network – the arc fault model, described in Section IV, could be implemented at any desired location in the network model using the drag and drop functionality of the software. The fault model is capable of producing a wide range of conditions and, as such, enabled the generalization capabilities of the method to be tested. Network topology includes a distribution busbar fed from a rectifier that, in turn, provides DC power to two load centers through separate feeders. This basic network architecture may be representative of low voltage DC microgrids that are either interconnected with a main grid [1] or stand-alone e.g. within an aircraft or shipboard system [2, 43]. The passive rectifier has either 230VAC input to commute to 270VDC or 115VAC input to commute to 28VDC – these are typical distribution levels in aerospace applications. Lumped element models consisting of resistors, inductors and capacitors were used to model resistive and reactive loads. The two load centers are directly interfaced to the system and do not include additional conversion stages. Series arc faults were modeled on the load feeders and current through the feeder is sampled at either the load centers or the busbar. Practically, it would be more suitable for current to be sampled at the main distribution busbar to relieve hardware issues - measurements would be communicated to a central data acquisition system for processing which in turn would communicate to protection devices in the event of fault detection. As part of the case study, a total of sixty model simulations were run for generation of individual test cases, where each simulation lasted 10 seconds. Each test case includes: periods of nominal steady-state behavior on both load feeders; nominal transient events on both feeders; and series intermittent arc fault behavior on one feeder. The current profile in Fig. 8 (a) is a typical example of simulated current on the faulted feeder throughout one of the test cases. Nominal transient events are modelled through basic



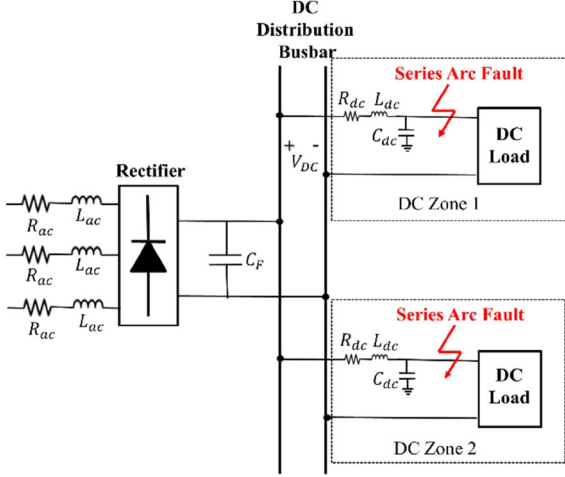


Fig. 10: Test DC network model architecture

TABLE II  
Test DC Network model parameters.

Network Model Parameter	Value
AC line Resistance, $R_{ac}$	0.641 $\Omega$ /km
DC line Resistance, $R_{dc}$	0.641 $\Omega$ /km
AC Line Inductance, $L_{ac}$	0.34 mH/km
DC Line Inductance, $L_{dc}$	0.34 mH/km
DC Line Capacitance, $C_{dc}$	0.1 $\mu$ F/km
DC side filter Capacitance, $C_F$	1mF
DC Voltage level, $V_{DC}$	270VDC or 28 VDC
Load Resistance	Ranged between 2 and 25 $\Omega$
Load Inductance	Ranged between 1.25 and 7mH
Load Capacitance	Ranged between 0.1 and 7 $\mu$ F
DC Feeder Length	Ranged between 45 and 90m

switching of loads within the load centers. To fully test the generalization capabilities of IntelArc, network parameters such as feeder lengths, fault location along the feeder, onset and duration of each fault event, load types and voltage levels were varied throughout each simulation run, and 5 kHz Gaussian noise was added to the sampled current to model sensor noise - a description of the network model parameters is provided in Table II. Forty tests were conducted at 270VDC and twenty were conducted at 28VDC. This case study does not consider switching noise from active power converters. Each 10 second test case was divided accordingly into individual data windows and applied sequentially to the AFD system as described in Section IV (D).

## 2- Case Study 1 Results

Results of the sixty individual test cases are summarized in Table III. In total, 59 out of 60 test cases were correctly diagnosed equating to overall accuracy of 98.3% and an average detection time from fault onset of 57.1ms: the incorrectly diagnosed test case was the result of a false positive (FP) during a nominal transient event under inductive loading. 97.5% of 270VDC tests were accurately diagnosed while 100% of the arcing events at 28VDC were accurately identified. This basic case study has highlighted various attributes of the proposed system, including:

- Detection of variable duration intermittent arcing events.

- Detection of arcing events with variable decreases in load current magnitude.
- Detection across a range of load currents.
- Accurate detection of all intermittent fault events.
- Some instances of nominal system transients result in false detection.
- Acceptable detection time.

Original testing highlighted a higher rate of FPs as a result of nominal transients. This was attributed to the LL of the nominal steady-state model significantly decreasing at the transient event (as expected) before increasing to a value more associated with fault conditions immediately after the switching event, which results in the system incorrectly diagnosing the presence of an arc fault. To alleviate this problem, it was determined that diagnosis of a fault event cannot be made for 100ms after a transient event has been diagnosed. Trade-offs do exist between false detection, non-detection and detection time. LL thresholds may be tuned to improve issues surrounding the rate of FPs although this may lead to non-detection of some intermittent events (there was no occurrence of false negatives in the test cases) as well as an increased detection time. Future work will continue to optimize thresholds to improve accuracy and refine reliability of the method to move towards commercial application.

IntelArc operated effectively under different types of reactive loading although further testing should be undertaken with capacitive loading to fully assess the impact it may have on system performance. It is generally assumed [44] that detection within highly capacitive networks is more challenging as the resistance to changes in load voltage impacts the arcing noise signatures. A similar line of discussion extends to the type of load interface whereby the internal control of power electronic converters can also alter fault current dynamics [44].

## B. Case Study 2

The IntelArc method has also been tested using data generated within a DC network testbed which has means of inducing series arc faults. These initial experimental studies have tested the methods ability to accurately diagnose faults in the presence of converter and measurement noise. A one-line diagram of the testbed is illustrated in Fig. 11 and photographs depicting various system elements are provided in Fig. 12. The setup consists of a four-quad active rectifier providing DC power to a main busbar through two solid-state power controllers (SSPCs). Two separate loads, a directly interfaced resistive load bank and two parallel motors interfaced using a buck-boost DC/DC converter, are connected to the main busbar. Two current measurements are taken at each respective feeder and a voltage measurement is taken at the main bus bar. This equipment and configuration is limited to a maximum of 40V, 320W which allows representation of low voltage DC networks. As part of the case study, series arc faults were induced between the source and busbar with use of a fault throwing unit that consists of a stepper motor intermittently separating two contacts [34] – see Fig. 12 (b).

Table III  
Summary of Case Study 1 Results

Load Type	Load Interface	Voltage Level (VDC)	No. of Tests	No. of correct diagnoses	Diagnosis Accuracy (%)	Summary of incorrect diagnoses	Average Detection Time (ms)	Average Duration of arcing event (ms)
Inductive	Rectifier	270	30	29	96.67	1xFP	56.9	97
		28	10	10	100	-	55.5	89
Capacitive	Rectifier	270	10	10	100	-	62.4	104.4
		28	10	10	100	-	53.7	101.2
		Totals	60	59	98.3	-	57.1	97.905

Also, switching within the variable load bank was used to capture nominal transient behavior. Electrical current data sampled at 20 kHz was captured at the source feeder using an oscilloscope during steady state, series arc fault and nominal load switching behaviors. This data was used to test the accuracy of the IntelArc method that was trained using data generated from the software model described in Section IV.

Current data captured at the source feeder and the corresponding diagnostic outputs of IntelArc are illustrated in Fig. 13. Within this test example, the nominal load switch did not result in false diagnosis, while the intermittent fault conditions were accurately diagnosed. Five tests have been conducted with the onset of arcing occurring at two different power levels outlined in Table IV – IntelArc accurately identified the onset of fault conditions in each test case and load switching behavior did not result in FPs.

The next significant step would be implementing IntelArc onto the microcontroller. Testbed data would be collected, processed and analyzed using the integrated microcontroller to allow diagnosis of series arc faults in real time. In the event of fault detection, control signals would be communicated to SSPCs to isolate the fault and thus test time between fault onset and isolation.

### C. Comparison of IntelArc with existing AFD methods

The hybrid DWT and time-domain detection method proposed in [26] was shown to be accurate at low current and low voltages. However, accuracy at 240 and 300VDC with 25A system current was only 40% and 60% respectively and only sustained, not intermittent, faults are considered. Also, testing under reactive loading was not undertaken. Case Study 1 highlighted the ability of IntelArc to detect accurately across 270VDC and 28VDC levels and different forms of reactive loading. Detection time is the order of 100ms – almost double the average detection time of IntelArc. Test results of the ANN method utilizing FFT features in [20] showed limited accuracy in fault cases in comparison to IntelArc, as only 40% of five fault scenarios were accurately diagnosed. Testing did not consider nominal transient behavior. The main limitation of frequency domain extractions of non-stationary transient arc fault signals is there is no representation of how the frequency contributions change throughout time.

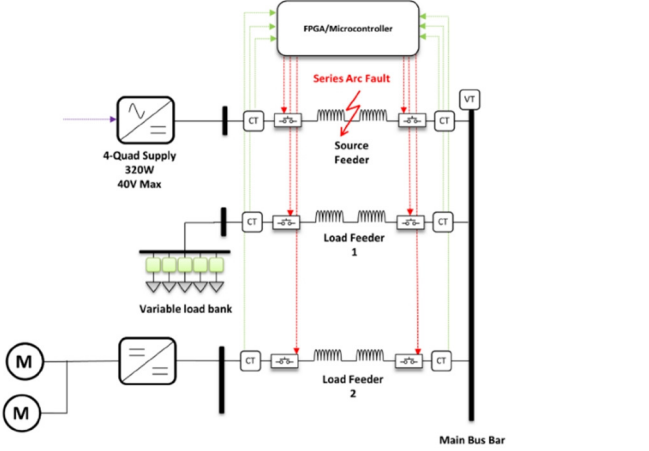


Fig. 11: One-line diagram of DC testbed setup

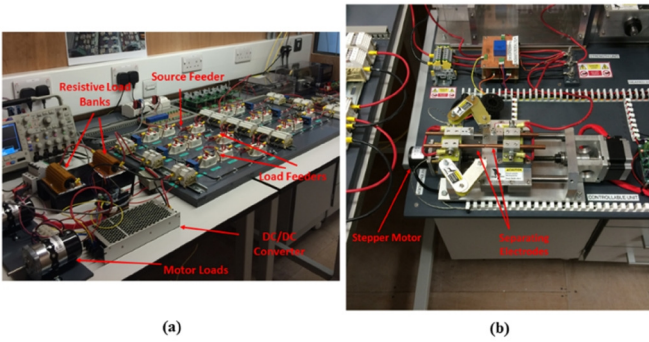


Fig. 12: (a) Depiction of various components within the experimental DC testbed configuration and (b) Series arc fault throwing unit

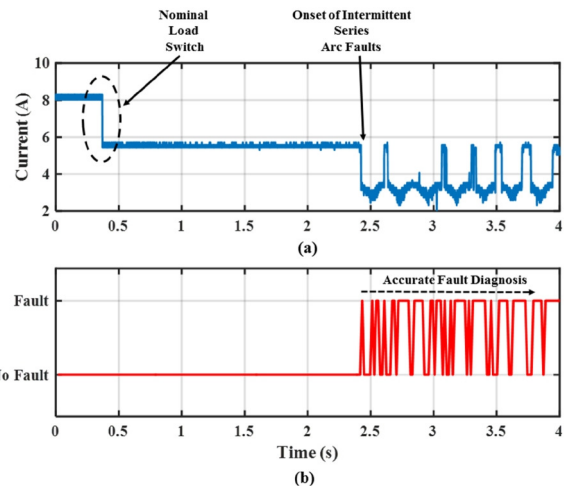


Fig. 13: (a) Experimental data captured using the DC testbed. Within this test case, a nominal load switch occurred at 0.4 s and the onset of intermittent series arcing occurred at 2.4s (b) Corresponding diagnostic outputs of the IntelArc outputs. IntelArc is not affected by the nominal load switch and accurately detects arcing at the appropriate time.

Table IV  
Summary of Case Study 2 Results

Voltage Level (V)	Current Level (A)	No. of Tests	IntelArc Accuracy (%)
33	5.5	3	100
28	8	2	100

The DWT analysis method in [24] claims high accuracy, although generalization is not proven as test results are only provided at 28VDC levels and values of load impedance are unchanged throughout testing. The method relies on observation of a certain number of abnormal events over a 100ms period – thus, minimal detection time will be 100ms.

A benefit of HMMs is the minimal computation effort required during calculation of LL statistics. IntelArc would be computationally inexpensive as only the trained parameters, and not associated training data, of each HMM are required for hardware implementation. The basis of the algorithm itself are the Viterbi algorithm [47] for calculating the LL of each HMM and the DWT for feature extraction – the Viterbi algorithm has computational complexity of  $O(N^2T)$ , where  $T$  is the number of hidden states in each model, and the 1-D db2 DWT has linear complexity  $O(N)$ . The overall effect of computational complexity on fault detection time is an avenue for further investigation and will be assessed with further hardware implementation.

Overall, the IntelArc method, that combines DWT feature extractions with HMM, provides an excellent platform for accurate, generalized and robust diagnosis of series DC arc faults.

## VI. CONCLUSIONS

This paper has proposed IntelArc, a series AFD system for application to DC networks, which is based on HMM and utilizes time-frequency and time domain features extracted from network current data. The choice of advanced ML method was motivated by the need to improve diagnostic accuracy and generalize across a range of network operating conditions. In particular, analysis of the temporal dynamics of DWT coefficients and their use for implementation within the HMM based system determined the ranges of detail and approximate coefficients that would optimize system performance. Two case studies validated accuracy of the method. IntelArc can now be further tested in the DC testbed with the benefit of using an accurate arc fault software model. In this context, development would remain software based with utilization of data from the validated arc fault model to train the respective fault HMM; parameters and algorithms would be integrated onto a microcontroller and the methods ability to isolate faults would be tested in real-time. Accelerating IntelArc through technology readiness levels (TRL) will require further consideration of the effect that noise emissions and interference from system devices have on detection accuracy. Deployment within compact DC networks, with current sensors located at the closest upstream busbar, means that transmitted fault signals and data should remain uncorrupted. However, further consideration will also be given to this issue at higher TRL.

The aspect of software development for hardware application would be of significant importance and benefit;

while the ability of ML approaches for various forms of fault diagnosis are well documented [45], the main drawback of their approach is a requirement for fault data, which is often unavailable. Access to an accurate series arc fault model that enables instances of fault data to be readily available, and from which a generalized, accurate AFD system could be developed, is of significant advantage. The adoption of DC distribution is prevailing, and this paper has shown the potential for IntelArc to improve reliability and security of supply within such networks through diagnosis and isolation of hazardous, and difficult to detect, series arc fault conditions.

## REFERENCES

- [1] D. Salomonsson, *et al.*, 'Protection of low-voltage DC microgrids', IEEE Trans. Power Del., vol. 24, no. 3, pp. 1045-1053, Jul. 2009
- [2] S.D.A. Fletcher *et al.*, 'Determination of protection system requirements for DC unmanned aerial vehicle electrical power networks for enhanced capability and survivability', IET Electr. Syst. Transp., vol. 1, no. 4, pp. 137-147, Dec. 2011
- [3] H. Hamilton and N.N. Schulz, 'DC protection on the electric ship', in *IEEE Electric Ships Technologies Symp.*, Arlington, VA, May 2007, pp. 294-300
- [4] D.J. Hammerstrom, 'AC versus DC distribution systems: Did we get it right?' in *IEEE Power Engineering Society General Meeting*, Tampa, FL, Jun. 2007, doi: [10.1109/PES.2007.386130](https://doi.org/10.1109/PES.2007.386130)
- [5] S.D.A. Fletcher *et al.*, 'Optimizing the role of unit and non-unit protection methods within DC microgrids' IEEE Trans. Smart Grid, vol. 3, no. 4, pp. 2079-2087, Dec. 2012
- [6] X. Yao *et al.*, 'Impact evaluation of series DC arc faults in DC microgrids', in *Applied Power Electronics Conf. and Expo.*, Charlotte, NC, Mar. 2015, pp. 2953-2958
- [7] B.G. Moffat *et al.*, 'Failure mechanisms of legacy aircraft wiring and interconnects', IEEE Trans. Dielectr. Electr. Insul. vol. 15, no. 6, pp. 808-822, Jun. 2008
- [8] J. Johnson and J. Kang, 'Arc fault detector algorithm evaluation method utilizing pre-recorded arcing signatures', in *IEEE Photovoltaic Specialists Conf.*, Austin, TX, Jun. 2012, doi: [10.1109/PVSC.2012.6317856](https://doi.org/10.1109/PVSC.2012.6317856)
- [9] M. Faifer *et al.*, 'A method for the detection of series arc faults in DC aircraft power networks', in *IEEE Instrumentation and Measurement Technology Conf.*, Minneapolis, MN, May 2013, pp. 778-783
- [10] J.D. Herbst *et al.*, 'Flexible test bed for MVDC and HFAC electric ship power system architectures for navy ships', in *IEEE Electric Ships Technologies Symp.*, Alexandria, VA, Apr. 2011, pp. 66-71
- [11] L.R. Rabiner, 'A tutorial on hidden Markov models and selected applications in speech recognition', Proc. IEEE, vol. 77, no. 2, pp. 257-286, Feb. 1989
- [12] V.V. Terzija and H.J. Koglin, 'On the modelling of long arc in still air and arc resistance calculation', IEEE Trans. Power Del. vol. 19, no. 3, pp. 1012-1017, Jul. 2004
- [13] D. Li *et al.*, 'A method for residential series arc fault detection and identification', in *IEEE Conf. on Electrical Contacts*, Vancouver, BC, Sep. 2009, pp. 8-14
- [14] G. Liu *et al.*, 'A survey on arc fault detection and wire fault location for aircraft wiring systems', SAE Int. Jour. Aerosp., vol. 1, no. 1, pp. 903-914, Jan. 2008
- [15] J.C. Zeurcher and D.L. McClanahan, 'Apparatus and method for real time determination of arc fault energy, location and type', US Patent 7 068 045, Jun. 27, 2006
- [16] M.T. Parker *et al.*, 'Electric arc monitoring systems', U.S. Patent 6 772 0777, Aug. 3 2004
- [17] M. Michalik *et al.*, 'High impedance fault detection in distribution networks with use of wavelet based algorithm', IEEE Trans. Power Del., vol. 21, no. 4, pp. 1793-1802, Oct. 2006
- [18] S.Y. Guo *et al.*, 'DC arc detection and prevention circuit and method', U.S. Patent 6 683 766, Jan. 27, 2004
- [19] D.G. Kilroy and W.H. Oldenburg, 'DC arc fault detection and protection' US Patent 2007/0 133 135, Dec. 5, 2006



- [20] J.A. Momoh and R. Button, 'Design and analysis of aerospace dc arcing faults using fast Fourier transformation and artificial neural network', in *IEEE Power Eng. and Soc. General Meeting*, Toronto, Canada, 2003, doi: 10.1109/PES.2003.1270407
- [21] M. Dargatz and M. Fornage, 'Method and apparatus for detection and control of dc arc faults', U.S. Patent 8 179 147, May 15, 2012
- [22] J. Zeurcher *et al.*, 'Detection of arcing in dc electrical systems' U.S. Patent 2004/0 027 749, Feb. 12, 2004
- [23] Y. Ohta and H. Isoda, 'Arc detecting device and aircraft equipped therewith', E.U. Patent 2 120 306, Nov. 18, 2009
- [24] G. Yunmei *et al.*, 'Wavelet packet analysis applied in detection of low voltage dc arc fault', in *IEEE Conf. on Industrial Electronics and Applications*, Xi'an, China, 2009, pp. 4013-4016
- [25] 'The wavelet tutorial', [Online]. Available: [http://person.hst.aau.dk/enk/ST8/wavelet\\_tutorial.pdf](http://person.hst.aau.dk/enk/ST8/wavelet_tutorial.pdf) [Accessed: 16-Jul-2015]
- [26] X. Yao *et al.*, 'Characteristic study and time-domain discrete wavelet transform based hybrid detection of series DC arc fault', *IEEE Trans. Power Electron.*, vol. 29, no. 6, pp. 3103-3115, Jun. 2014
- [27] M. Sarlak and S.M. Shahtrash, 'SVM based method for high impedance fault detection in distribution networks', *Int. J. for Comp. and Math. in Electr. and Electronic Eng.*, vol. 30, no. 2, pp. 431-450, 2011
- [28] O.J. Mengshoel *et al.*, 'Probabilistic model-based diagnosis: An electrical power system case study', *IEEE Trans. Syst. Man Cybernet. A, Syst. Humans*, vol. 40, no. 5, pp. 874-885, Sep. 2010
- [29] Q. Miao and V. Makis, 'Condition monitoring and classification of rotating machinery using wavelets and hidden Markov models', *Mechanical Syst. and Signal Process.*, vol. 21, no. 2, pp. 840-855, Feb. 2007
- [30] K.P. Murphy, 'Machine Learning: A probabilistic perspective', MIT Press, 2012
- [31] K.C. Kwon and J.H. Kim, 'Accident identification in nuclear power plants using hidden Markov models', *Eng. App. of Artificial Intel.*, vol. 12, no. 4, pp. 491-501, Aug. 1999
- [32] T.K. Abdel-Galil *et al.*, 'Disturbance classification using hidden Markov models and vector quantization', *IEEE Trans. Power Del.*, vol. 20, no. 3, pp. 2129-2135, Jul. 2005
- [33] N. Perera and A.D. Rajapakse, 'Development and hardware implementation of a fault transients recognition system', *IEEE Trans. Power Del.*, vol. 27, no. 1, pp. 40-52, Jan. 2012
- [34] F.M. Uriarte *et al.*, 'A DC arc model for series faults in low voltage microgrids', *IEEE Trans. Smart Grid*, vol.3, no.4, pp.2063-2070, Dec. 2012
- [35] R.F. Ammerman *et al.*, 'DC arc models and incident-energy calculations', *IEEE Trans. Ind. Appl.*, vol. 46, no.5, pp.1810-1819, Sep. 2010
- [36] T.E. Browne, 'The electric arc as a circuit element', *Journal of the Electrochemical Soc.*, vol.102, no.1, pp. 27-37, 1955
- [37] A.D. Stokes and W.T. Oppenlander, 'Electric arcs in open air', *J. of Physics D: Applied Physics*, vol.24, no.1, pp.26-35, Jan. 1991
- [38] J. Paukert, 'The arc voltage and arc resistance of LV fault arcs', in *Proc. Int. Switching Arc Phenomenon Symp.*, Lodz, Poland, 1993
- [39] J. Johnson and K. Armijo, 'Parametric study of PV arc-fault generation methods and analysis of conducted DC spectrum', in *IEEE Photovoltaic Specialist Conf.*, Denver, CO, Jun. 2014, pp. 3543-3548
- [40] S.Khalid *et al.*, 'A survey of feature selection and extraction techniques in machine learning', in *Science and Inf. Conf.*, London, UK, Aug. 2014, pp. 372-378
- [41] R.X. Gao and R.Yan, 'From Fourier Transform to Wavelet Transform: a historical perspective' in *Wavelets: Theory and Applications for Manufacturing*, Springer Science, 2011, Ch. 2, pp. 17-32
- [42] 'Wavelet Toolbox', [Online]. Available: <http://uk.mathworks.com/products/wavelet/> [Accessed: 03-Feb-2016]
- [43] X.Feng *et al.*, 'Multi-agent system based real time fault management for all-electric ship power systems in DC zone level', *IEEE Trans. Power Syst.*, vol. 27, no.4, pp. 1719-1728, Nov. 2012
- [44] 'Codes and Standards for PV Arc Fault Mitigation'. [Online]. Available: [http://energy.sandia.gov/wp-content/gallery/uploads/Bower\\_Arc-PV\\_Codes-Detection-mitigation.pdf](http://energy.sandia.gov/wp-content/gallery/uploads/Bower_Arc-PV_Codes-Detection-mitigation.pdf) [Accessed: 04-Feb-2016]
- [45] W.G. Fenton *et al.*, 'Fault diagnosis of electronic systems using intelligent techniques: A review', *IEEE Trans. Syst. Man Cybern. C, Appl. Rev.*, vol.31, no.3, pp. 269- 281, Aug. 2001
- [46] Z. Wang *et al.*, 'Arc fault signal detection – Fourier transformation vs. wavelet decomposition techniques using synthesized data', in *Photovoltaic Specialist Conf.*, Denver, CO, 2014, pp. 3239-3244
- [47] G.D. Forney Jr., 'The Viterbi algorithm', *Proc. IEEE*, vol. 61, no. 3, pp. 268-278, 1973
- [48] 'Simscape Power Systems'. [Online]. Available: <http://uk.mathworks.com/products/simpower/>. [Accessed: 20-Sep-2016].



**Rory Telford** is a Research Assistant within the Institute for Energy and Environment at University of Strathclyde where he received his BEng and MSc degrees in Electronic and Electrical Engineering in 2008 and 2011 respectively. He is currently pursuing the Ph.D. degree in Electronic and Electrical Engineering from the University of Strathclyde. His research interests include application of AI techniques, data driven fault diagnostics and power system modeling and analysis.



**Stuart Galloway** is a Reader within the Institute for Energy and Environment. He obtained his MSc and PhD degrees in mathematics from the University of Edinburgh in 1994 and 1998 respectively. His research interests include power system optimization, numerical methods and simulation of novel electrical architectures.



**Bruce Stephen (M'09, SM'14)** currently holds the post of Senior Research Fellow within the Institute for Energy and Environment at the University of Strathclyde. He received his B.Sc. from Glasgow University and M.Sc. and PhD degrees from the University of Strathclyde. His research interests include power system condition monitoring, renewable integration and characterizing low voltage network behaviour.



**Ian Elders** obtained his BEng(Hons) and PhD from the University of Strathclyde, Glasgow in 1994 and 2002 respectively. He is currently a Research Fellow with the University of Strathclyde, and most recently has carried out research in collaboration with Rolls-Royce and SP Energy Networks. His research interests include the design, planning, monitoring, and management of smart distribution systems.