

Body-mass index and all-cause mortality: individual-participant-data meta-analysis of 239 prospective studies in four continents



The Global BMI Mortality Collaboration*



Summary

Background Overweight and obesity are increasing worldwide. To help assess their relevance to mortality in different populations we conducted individual-participant data meta-analyses of prospective studies of body-mass index (BMI), limiting confounding and reverse causality by restricting analyses to never-smokers and excluding pre-existing disease and the first 5 years of follow-up.

Methods Of 10 625 411 participants in Asia, Australia and New Zealand, Europe, and North America from 239 prospective studies (median follow-up 13.7 years, IQR 11.4–14.7), 3 951 455 people in 189 studies were never-smokers without chronic diseases at recruitment who survived 5 years, of whom 385 879 died. The primary analyses are of these deaths, and study, age, and sex adjusted hazard ratios (HRs), relative to BMI 22.5–<25.0 kg/m².

Findings All-cause mortality was minimal at 20.0–25.0 kg/m² (HR 1.00, 95% CI 0.98–1.02 for BMI 20.0–<22.5 kg/m²; 1.00, 0.99–1.01 for BMI 22.5–<25.0 kg/m²), and increased significantly both just below this range (1.13, 1.09–1.17 for BMI 18.5–<20.0 kg/m²; 1.51, 1.43–1.59 for BMI 15.0–<18.5) and throughout the overweight range (1.07, 1.07–1.08 for BMI 25.0–<27.5 kg/m²; 1.20, 1.18–1.22 for BMI 27.5–<30.0 kg/m²). The HR for obesity grade 1 (BMI 30.0–<35.0 kg/m²) was 1.45, 95% CI 1.41–1.48; the HR for obesity grade 2 (35.0–<40.0 kg/m²) was 1.94, 1.87–2.01; and the HR for obesity grade 3 (40.0–<60.0 kg/m²) was 2.76, 2.60–2.92. For BMI over 25.0 kg/m², mortality increased approximately log-linearly with BMI; the HR per 5 kg/m² units higher BMI was 1.39 (1.34–1.43) in Europe, 1.29 (1.26–1.32) in North America, 1.39 (1.34–1.44) in east Asia, and 1.31 (1.27–1.35) in Australia and New Zealand. This HR per 5 kg/m² units higher BMI (for BMI over 25 kg/m²) was greater in younger than older people (1.52, 95% CI 1.47–1.56, for BMI measured at 35–49 years vs 1.21, 1.17–1.25, for BMI measured at 70–89 years; $p_{\text{heterogeneity}} < 0.0001$), greater in men than women (1.51, 1.46–1.56, vs 1.30, 1.26–1.33; $p_{\text{heterogeneity}} < 0.0001$), but similar in studies with self-reported and measured BMI.

Interpretation The associations of both overweight and obesity with higher all-cause mortality were broadly consistent in four continents. This finding supports strategies to combat the entire spectrum of excess adiposity in many populations.

Funding UK Medical Research Council, British Heart Foundation, National Institute for Health Research, US National Institutes of Health.

Copyright © The Author(s). Published by Elsevier Ltd. This is an Open Access article under the CC-BY license.

Introduction

The worldwide prevalence of overweight and obesity is high and is increasing.^{1,2} WHO estimates that more than 1.3 billion adults worldwide are overweight, defined by WHO as a body-mass index (BMI) of 25–<30 kg/m², and a further 600 million are obese (BMI ≥30 kg/m²).³ Appropriate analyses of large-scale prospective studies with prolonged follow-up generally indicate that both overweight and obesity are associated with increased mortality, as is underweight (defined conservatively by WHO as BMI <18.5 kg/m²). However, it is not known how such associations vary across major global regions, an uncertainty relevant to international strategies for overweight and obesity.⁴ Most previous analyses have focused on people living in one particular country or continent,^{5–12} even though associations with

overweight and underweight might differ from one population to another.

Estimation of the relationships between BMI and mortality in various populations can help to assess the adverse physiological effects of excessive adiposity (and the adverse physiological effects of various determinants of low BMI). However, reliable estimates of the causal relevance of BMI to mortality need to limit the effects of reverse causality, because chronic disease and smoking can themselves affect BMI. To help achieve more valid estimates, prospective studies of BMI and mortality should, when possible, exclude: smokers, participants who already have some chronic disease at recruitment that could affect BMI, and those dying within 5 years of recruitment.^{13–16}

The Global BMI Mortality Collaboration was established to provide a standardised comparison of

Published Online

July 13, 2016

[http://dx.doi.org/10.1016/S0140-6736\(16\)30175-1](http://dx.doi.org/10.1016/S0140-6736(16)30175-1)

See Online/Comment

[http://dx.doi.org/10.1016/S0140-6736\(16\)30949-7](http://dx.doi.org/10.1016/S0140-6736(16)30949-7)

*Members of the writing committee are listed at the end of the paper and a full list of investigators is provided in the appendix

Correspondence to:

Prof John Danesh, Department of Public Health and Primary Care, University of Cambridge, Cambridge CB1 8RN, England, UK
gbmc@phpc.cam.ac.uk

See Online for appendix

Research in context

Evidence before this study

A previous study has claimed that relative to normal weight (defined by WHO as a body-mass index [BMI] of 18.5–<25.0 kg/m²), overweight (BMI 25.0–<30.0 kg/m²) and grade 1 obesity (30.0–<35.0 kg/m²) are not associated with higher all-cause mortality. However, reliable estimates of the causal relevance of BMI to mortality should limit the effects of reverse causality, because chronic disease and smoking can themselves affect BMI. To help achieve such estimates, we established the Global BMI Mortality Collaboration, which involved analysis of individual-participant data from about 10.6 million adults in 239 prospective studies in 32 countries in Asia, Australia and New Zealand, Europe, or North America, about 4 million of whom were never-smokers without chronic disease at recruitment who were still being followed up at least 5 years afterwards.

Added value of this study

The Global BMI Mortality Collaboration has combined several features to help guide international public health policy. First, it involved a detailed and standardised comparison of the associations of BMI with mortality across prospective studies in

four continents. Second, this analysis has been comprehensive, entailing data from 97% of eligible participants in relevant prospective cohort studies. Third, the study further subdivided the WHO's normal BMI range, which is excessively wide. Finally, the study's approach should have reduced the potentially distorting effects of smoking and ill health on BMI because the primary analyses were of never-smokers without previous disease who survived at least 5 years.

Implications of all the available evidence

This analysis has shown that both overweight and obesity (all grades) were associated with increased all-cause mortality. In the BMI range above 25 kg/m² (the upper limit of the WHO's normal range), the relationship of BMI to mortality was strong and positive in every global region we studied (except perhaps south Asia, where numbers of deaths were small), lending support to strategies to combat the entire spectrum of excess adiposity worldwide. Our results challenge recent suggestions that overweight and moderate obesity are not associated with higher mortality, bypassing speculation about hypothetical protective metabolic effects of increased body fat in apparently healthy individuals.

associations of BMI with mortality across different populations. It includes individual-participant data for 10.6 million adults in 239 prospective cohort studies in 32 countries, mainly located in Asia, Australia and New Zealand, Europe, or North America, about 4 million of whom were never-smokers without reported chronic diseases (mainly cardiovascular disease, cancer, or chronic respiratory disease) at recruitment and who were still being followed up 5 years afterwards.

Methods

Search strategy and selection criteria

In 2013, over 500 investigators (appendix pp 49, 50) from over 300 institutions in 32 countries agreed an analysis plan for combining individual-participant data from contributing studies. This prespecified analysis plan is provided in the appendix (pp 51–53). The goal was to produce reliable estimates of potentially causal associations of overweight and obesity with mortality using data from studies in several regions. The prespecified analysis methods were designed to maximise the internal validity by reducing the scope for bias. This Article follows PRISMA for Individual Patient Data reporting guidelines (appendix pp 54, 55).¹⁷

We sought data from large prospective studies (≥100 000 participants at baseline) or large multicohort consortia (total ≥100 000 participants at baseline). We identified studies published from January, 1970, to January, 2015, through systematic literature searches and discussion with investigators (appendix pp 56, 57). Electronic searches were done with MEDLINE, Embase,

and Scopus, and with the terms “body-mass index”, “mortality” or “death”, “cohort” or “prospective”, and combinations of the words “risk”, “relative”, “ratio”, “hazard”, or “rate”. Prospective cohort studies or consortia thereof were eligible if they: (1) had information about weight, height, age, and sex; (2) did not select participants on the basis of having any previous chronic disease; (3) recorded overall or cause-specific deaths; and (4) had accrued 5 years or more of median follow-up. We identified only two eligible studies that were unable to contribute (appendix p 37).^{18,19} Details of the included studies are provided in the appendix (pp 3–14). The contributing studies classified deaths according to the primary cause (or, in its absence, the underlying cause), on the basis of coding from the International Classification of Diseases, revisions 8–10, to at least three digits (appendix p 15), or according to study-specific classification systems. Ascertainment of outcomes was generally based on death certificates, supplemented in some studies by additional data.

The appendix (p 37) describes the inclusion and exclusion criteria. We excluded participants with a BMI of less than 15 kg/m² or 60 kg/m² or more, or baseline age younger than 20 years or older than 90 years. To limit residual confounding by smoking and bias due to effects of pre-existing disease on baseline BMI (ie, reverse causality), the primary analysis was restricted to never-smokers without specific known chronic diseases at baseline (eg, cardiovascular disease, cancer, or respiratory diseases), and omitted the first 5 years of follow-up.

Statistical analysis

Associations of all-cause mortality with BMI depend not only on the associations of specific causes of death with BMI in different regions (which might differ quantitatively), but also on how relatively common each specific cause of death is in the particular region (which can differ substantially by region and over time). Hence, the association of all-cause mortality with BMI might differ in regions with different underlying mortality patterns. Therefore, the prespecified primary analysis was stratified by five major geographical regions, three with extensive data (east Asia, Europe, and North America) and two with more limited data (Australia and New Zealand, and south Asia). Data from some or all regions are shown separately, in the main text or in the appendix.

Each study (or consortium of studies) analysed individual-participant data according to a common analytical plan with SAS version 9.3 (SAS Institute, Cary, NC, USA) or Stata version 12 (StataCorp, College Station, TX, USA) provided by the coordinating centres. These

separate results were then meta-analysed at Cambridge University, UK. To facilitate standardised comparisons with other meta-analyses, we calculated hazard ratios (HRs) for mortality in the six WHO-defined baseline BMI categories: underweight (15.0–<18.5 kg/m²), normal (18.5–<25.0 kg/m²; the reference category for analyses of these six BMI groups), overweight (25–<30.0 kg/m²), and obesity grade 1 (30.0–<35.0 kg/m²), grade 2 (35.0–<40.0 kg/m²), and grade 3 (40.0–<60.0 kg/m²).²⁰ Because, however, most people are of normal weight or overweight, these two categories were subdivided, yielding nine groups (15.0–<18.5 kg/m²; 18.5–<20.0 kg/m²; 20.0–<22.5 kg/m²; 22.5–<25.0 kg/m², the reference category for analyses of nine BMI groups; 25.0–<27.5 kg/m²; 27.5–<30.0 kg/m²; 30.0–<35.0 kg/m²; 35.0–<40.0 kg/m²; and 40.0–<60.0 kg/m²). The BMI group with the largest number of participants was chosen as the reference group.

Study-specific log HRs in specific BMI categories were pooled by inverse-variance-weighted random-effects

	Underweight (15.0– <18.5 kg/m ²)	Normal weight (18.5– <25.0 kg/m ²)	Overweight (25.0– <30.0 kg/m ²)	Obesity grade 1 (30.0– <35.0 kg/m ²)	Obesity grade 2 (35.0– <40.0 kg/m ²)	Obesity grade 3 (40.0– <60.0 kg/m ²)
Crude analysis with no exclusions*						
Participants/deaths	292 003/68 455	5 586 892/810 838	3 467 617/526 098	946 257/144 871	237 223/36 113	92 458/15 399
HR (95% CI)	1.82 (1.74–1.91)	1.00 (0.98–1.02)	0.95 (0.94–0.97)	1.17 (1.16–1.18)	1.49 (1.47–1.51)	1.95 (1.90–2.01)
Participants without known disease at baseline†						
Participants/deaths	255 000/52 789	4 922 817/631 488	2 916 978/388 781	756 075/102 315	183 689/24 556	696 88/10 321
HR (95% CI)	1.81 (1.72–1.91)	1.00 (0.98–1.02)	0.95 (0.95–0.96)	1.18 (1.16–1.20)	1.52 (1.48–1.55)	2.05 (1.98–2.13)
Participants without known chronic disease at baseline, adjusted for smoking status‡						
Participants/deaths	245 080/51 170	4 751 019/618 881	2 826 687/381 617	733 108/100 113	178 130/23 945	67 593/10 002
HR (95% CI)	1.70 (1.61–1.80)	1.00 (0.98–1.02)	0.99 (0.98–1.00)	1.25 (1.23–1.27)	1.63 (1.59–1.66)	2.24 (2.15–2.33)
Participants without known chronic disease at baseline, adjusted for smoking status, and excluding the first 5 years of follow-up§						
Participants/deaths	208 044/33 817	4 234 052/496 310	2 513 128/312 450	641 237/80 037	152 741/18 737	56 232/7 659
HR (95% CI)	1.60 (1.51–1.70)	1.00 (0.98–1.02)	1.03 (1.01–1.04)	1.31 (1.29–1.33)	1.70 (1.67–1.74)	2.36 (2.27–2.45)
The primary prespecified analysis: never-smokers without known chronic disease at baseline—excluding the first 5 years of follow-up¶						
Participants/deaths	114 091/12 726	2 145 550/192 523;	1 250 103/130 293;	330 840/37 318	80 827/9 179	30 044/3 840
HR (95% CI)	1.47 (1.39–1.55)	1.00 (0.98–1.02)	1.11 (1.10, 1.11)	1.44 (1.41–1.47)	1.92 (1.86–1.98)	2.71 (2.55–2.86)

CI=confidence interval. Cls were calculated with floating variance estimates (reflecting independent variability within each group, including the reference group). Reference group is normal weight (18.5–<25.0 kg/m²). All analyses are adjusted for age and sex. Baseline BMI categories were defined by WHO. BMI=body-mass index. HR=hazard ratio. *237 studies; 10 622 450 participants; 1 601 774 deaths. †236 studies; 9 104 247 participants; 1 210 250 deaths. ‡234 studies; 8 801 617 participants; 1 185 728 deaths. §213 studies; 7 805 434 participants; 949 010 deaths. ¶189 studies; 3 951 455 participants; 385 879 deaths.

Table 1: Effects of successively stricter precautions against bias on analyses of six WHO defined groups of BMI versus all-cause mortality

	15.0– <18.5 kg/m ²	18.5– <20.0 kg/m ²	20.0– <22.5 kg/m ²	22.5– <25.0 kg/m ²	25.0– <27.5 kg/m ²	27.5– <30.0 kg/m ²	30.0– <35.0 kg/m ²	35.0– <40.0 kg/m ²	40.0– <60.0 kg/m ²
Participants/deaths	114 091/12 726	230 749/20 989	838 907/72 701	1075 894/98 833	821 303/84 952	428 800/45 341	330 840/37 318	80 827/9 179	30 044/3 840
HR (95% CI)	1.51 (1.43–1.59)	1.13 (1.09–1.17)	1.00 (0.98–1.02)	1.00 (0.99–1.01)	1.07 (1.07–1.08)	1.20 (1.18–1.22)	1.45 (1.41–1.48)	1.94 (1.87–2.01)	2.76 (2.60–2.92)

189 studies; 3 951 455 participants; 385 879 deaths. The primary prespecified analysis in never-smokers without known chronic disease at baseline, excluding the first 5 years of follow-up (with normal weight and overweight categories further subdivided into: 18.5–<20.0 kg/m², 20.0–<22.5 kg/m², 22.5–<25.0 kg/m², 25.0–<27.5 kg/m², and 27.5–<30.0 kg/m²). Cls were calculated using floating variance estimates (reflecting independent variability within each group, including the reference group). Reference group is 22.5–<25.0 kg/m². All analyses are adjusted for age and sex. Baseline BMI categories were defined by WHO. BMI=body-mass index. HR=hazard ratio.

Table 2: Nine groups of BMI versus all-cause mortality, with use of the primary prespecified analysis

meta-analyses (an extension of the DerSimonian and Laird procedure) and plotted against the mean BMI value within each category. Sensitivity analyses used other statistical methods (eg, fixed-effect models). To enable comparisons across BMI groups irrespective of the choice of a reference group, a floating variance estimate (reflecting independent variability within each group, including the reference group) was attributed to each category using Plummer's

method and used to calculate group-specific confidence intervals.²¹

To estimate the BMI levels at which mortality risk was lowest (ie, the nadir), weighted linear regression yielded the best-fitting second-degree fractional polynomial model relating pooled log HRs to pooled mean BMI levels (weighted by the inverse of the floating variance of the log HR), and the minimum of this polynomial was

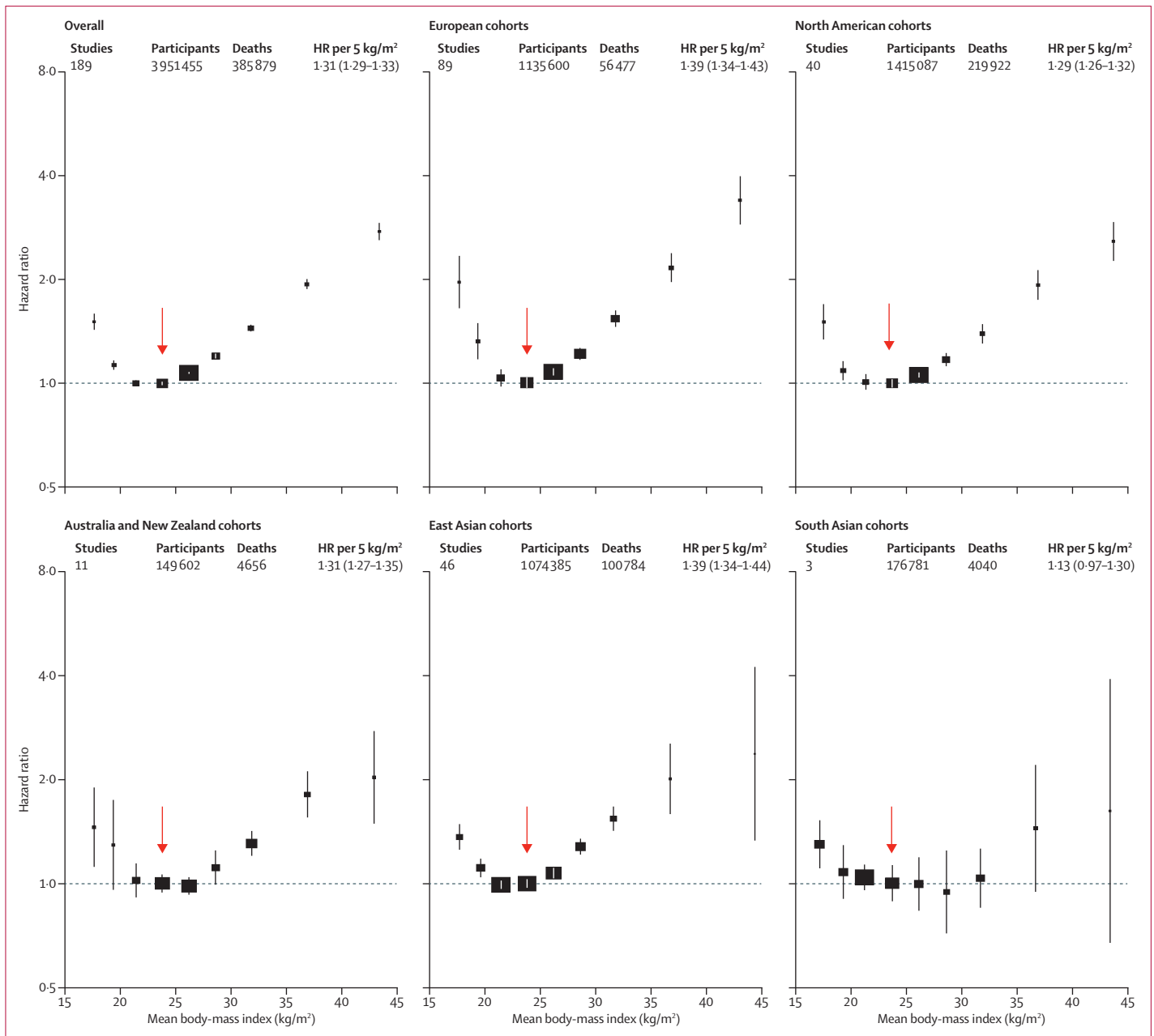


Figure 1: Association of body-mass index with all-cause mortality, by geographical region

Boxes are plotted against the mean BMI in each group. The HR per 5 kg/m² higher body-mass index (BMI) and its 95% CI are calculated only for BMI more than 25.0 kg/m². Analyses restricted to never-smokers without pre-existing chronic disease, excluding the first 5 years of follow-up. The reference category is shown with the arrow and is 22.5–<25.0 kg/m². CIs are from floating variance estimates (reflecting independent variability within each category, including reference). Areas of squares are proportional to the information content (ie, inverse of the floating variance). HR=hazard ratio.

the nadir. We assessed all-cause mortality and its main components, coronary heart disease, stroke, other cardiovascular disease, cancer, and respiratory disease (appendix p 15). HRs were calculated separately within each study with Cox regression models stratified for baseline age and sex (appendix pp 51–53), with participants contributing from the baseline survey in crude analyses or from year 5 in the primary analyses. HRs in sex-specific and baseline-age-specific groups (and, when appropriate, by trial groups) were combined across studies.²² To avoid over-fitting of statistical models, studies with ten or fewer deaths from a particular cause were excluded from meta-analyses of that cause.^{23,24}

Because the associations of BMI with mortality were approximately log-linear above a BMI of 25 kg/m², we calculated HRs per 5 kg/m² higher BMI increase by inverse-variance-weighted regression of the pooled log HRs on mean BMI values in each category.¹⁷ For all-cause mortality, we estimated population-attributable fractions for underweight, overweight, and obesity by combining the proportional excess mortality (X_0 , X_1 , and X_2 , where $X=HR-1$) in these BMI categories with the corresponding prevalences (P_0 , P_1 , and P_2 , taken from Global Burden of Disease²⁵ region-specific prevalences). The population-attributable fractions for overweight and obesity are then P_1X_1/k and P_2X_2/k , where $k=1+P_0X_0+P_1X_1+P_2X_2$. Between-study heterogeneity was quantified by the I^2 statistic.²⁶ We used two-sided *p* values and 95% CIs.

Role of the funding source

The funders of the study had no role in study design, data collection, data analysis, data interpretation, or writing of the report. SK, PG, EDA, and JD had access to all the data, and, together with SNB and FBH, were responsible for the decision to submit for publication.

Results

Of 10625411 participants from 239 studies (median follow-up 13.7 years, IQR 11.4–14.7), 3951455 people in 189 studies were never-smokers without specific chronic diseases at recruitment who survived 5 years, of whom 385879 died. To limit bias, the prespecified primary analyses involved this restricted population. To avoid merging importantly different risks, many of these primary analyses further subdivided the WHO-defined normal and overweight BMI categories, yielding nine BMI groups rather than six.

Table 1 shows the substantial relevance of successively stricter exclusions, going from crude analyses of about 10.6 million to prespecified analyses of about 4 million adults. With BMI in only six groups, the whole range from 18.5 kg/m² to less than 25 kg/m² is the reference group, and HRs were: underweight 1.47 (95% CI 1.39–1.55), overweight 1.11 (1.10–1.11), grade 1 obesity 1.44 (1.41–1.47), grade 2 obesity 1.92 (1.86–1.98), grade 3 obesity 2.71 (2.55–2.86), and any obesity 1.64 (1.61–1.67; appendix pp 16, 17, 25). With normal and overweight groups more finely subdivided, however, BMI 22.5 kg/m² to less than 25.0 kg/m² becomes the reference group, and with this more precise reference group, the HRs for grade 1, 2, and 3 obesity increased slightly (table 1, 2). Mortality was lowest in the BMI range from 20.0 kg/m² to less than 25.0 kg/m², and was significantly increased just below this BMI range and in the overweight range just above it (table 2).

In these prespecified analyses of almost 4 million adults, the HRs for overweight and for obesity grade 1 were broadly similar across different geographical regions (Europe, North America, east Asia, and Australia and New Zealand; numbers of deaths in south Asia were too small to be reliable), but the HRs for underweight

	15.0– <18.5 kg/m ²	18.5– <20.0 kg/m ²	20.0– <22.5 kg/m ²	22.5– <25.0 kg/m ²	25.0– <27.5 kg/m ²	27.5– <30.0 kg/m ²	30.0– <35.0 kg/m ²	35.0– <40.0 kg/m ²	40.0– <60.0 kg/m ²
Europe*									
Participants/deaths	13398/675	42584/1508	199369/7449	306566/13278	249929/12850	153147/8935	127536/8386	32749/2424	10322/972
HR (95% CI)	1.79 (1.63–1.97)	1.25 (1.14–1.38)	1.02 (0.97–1.07)	1.00 (0.97–1.03)	1.07 (1.06–1.09)	1.21 (1.18–1.25)	1.52 (1.45–1.58)	1.99 (1.87–2.12)	3.04 (2.84–3.27)
North America†									
Participants/deaths	22028/3846	67114/8597	274883/36200	359022/54995	317721/53464	168183/28471	149807/25348	39379/6299	16950/2702
HR (95% CI)	1.51 (1.34–1.70)	1.09 (1.02–1.16)	1.01 (0.96–1.06)	1.00 (0.97–1.03)	1.06 (1.04–1.07)	1.17 (1.12–1.22)	1.39 (1.30–1.49)	1.93 (1.74–2.13)	2.58 (2.26–2.93)
East Asia‡									
Participants/deaths	46979/7178	94409/10206	301242/27537	336758/28755	194857/17070	72133/6950	25658/2753	1941/231	408/104
HR (95% CI)	1.36 (1.25–1.49)	1.11 (1.04–1.18)	0.99 (0.97–1.02)	1.00 (0.97–1.03)	1.07 (1.04–1.11)	1.28 (1.21–1.35)	1.54 (1.42–1.67)	2.01 (1.59–2.54)	2.38 (1.33–4.24)
<i>p</i> value for heterogeneity§	0.0045	0.28	0.42	..	0.89	0.46	0.20	0.48	<0.0001
<p>Normal weight and overweight are subdivided, and the reference category is BMI 22.5 kg/m² to less than 25.0 kg/m². Numbers of studies, participants, and deaths are shown after exclusions from these prespecified principal analyses. CIs were calculated using floating variance estimates (reflecting independent variability within each group, including the reference group). Results from studies in south Asia and Australia and New Zealand are in figure 1, with details in the appendix (p 20). *89 studies; 1135600 participants; 56477 deaths. †40 studies; 1415087 participants; 219922 deaths. ‡46 studies; 1074385 participants; 100784 deaths. §<i>p</i> value for heterogeneity is for all three regions.</p>									
<p>Table 3: Nine BMI groups versus all-cause mortality in never-smokers, excluding chronic disease at baseline and 5 years of follow-up in geographical regions with more than 1 million participants</p>									

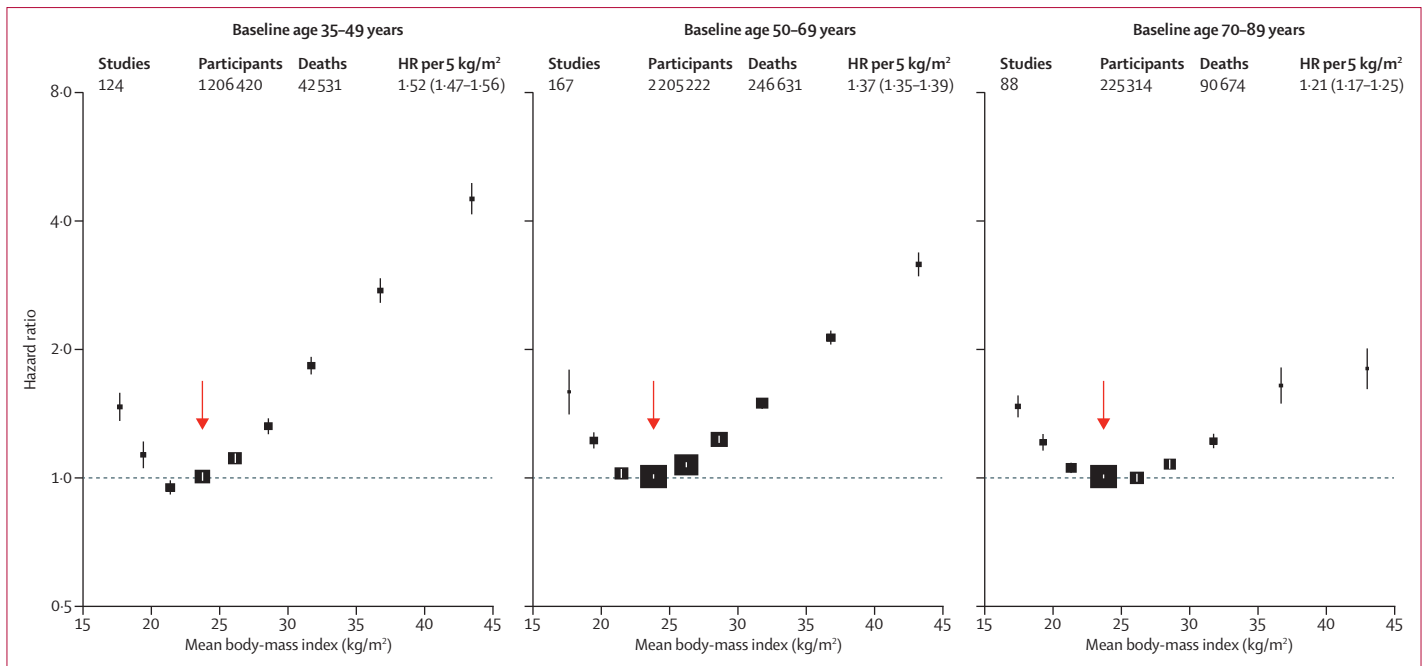


Figure 2: Association of body-mass index with all-cause mortality, by baseline age group

The HR per 5 kg/m² higher body-mass index (BMI) and its 95% CI are calculated only for BMI more than 25.0 kg/m². Analyses restricted to never-smokers without pre-existing chronic disease, and excluding the first 5 years of follow-up, and include data from all geographical regions. The reference category is shown with the arrow and is 22.5–<25.0 kg/m². CIs are from floating variance estimates (reflecting independent variability within each category, including the reference category). Areas of squares are proportional to the information content. Analyses by baseline age and the three main geographical regions are in the appendix (p 38). HR=hazard ratio.

and grade 3 obesity appeared somewhat higher in Europe than in east Asia (figure 1, table 3, appendix pp 16–21).

Combining all regions, the HRs for overweight and obesity were higher at younger ages than older ages, and in men than women (figures 2 and 3); this finding held in each major geographical region (appendix pp 22–24 38–40). In each region, BMI was non-linearly associated with all-cause mortality, with nadir at BMI 20.0 kg/m² to less than 25.0 kg/m² and excess mortality in underweight, overweight, and at BMI 18.5 kg/m² to less than 20.0 kg/m², at the lower end of the WHO-defined normal range. The nadir depended on age, and was BMI=22 kg/m² for baseline age 35–49 years, BMI=23 kg/m² for baseline age 50–69 years, and BMI=24 kg/m² for baseline age 70–89 years.

Population-attributable fractions for all-cause mortality due to overweight or obesity were 19% in North America, 16% in Australia and New Zealand, and 14% in Europe, but only 5% in east Asia (appendix p 25). For BMI 25 kg/m² or more, the association of BMI with all-cause mortality was approximately log-linear, and of similar strength in each region (except perhaps south Asia, where numbers of deaths were small), with HR per 5 kg/m² units higher BMI 1.31 (95% CI 1.29–1.33) overall, 1.39 (1.34–1.44) in east Asia, 1.39 (1.34–1.43) in Europe, 1.29 (1.26–1.32) in North America, and 1.31 (1.27–1.35) in Australia and New Zealand. The HR decreased with age from 1.52 (1.47–1.56) for ages 35–49 years at baseline to 1.21

(1.17–1.25) for ages 70–89 years at baseline (trend $p < 0.0001$; appendix p 26). The HR was 1.51 (1.46–1.56) for men versus 1.30 (1.26–1.33) for women (heterogeneity $p < 0.0001$; figure 3). Hence, a given increase in BMI is associated with a far greater absolute mortality increase in men than in women (appendix p 45). As there were far more women than men, particularly among obese people, the HR among all participants was similar to the HR just among women.

For each major cause of death, BMI was non-linearly associated with mortality in each major region we studied (appendix pp 27–29, 41, 42). Above 25 kg/m², BMI was strongly positively related to coronary heart disease, stroke, and respiratory disease mortality, and moderately positively related to cancer mortality (figure 4); these findings were broadly similar in Europe, North America, and east Asia (appendix pp 28, 29). Within WHO's wide normal BMI range (18.5–<25.0 kg/m²) the main geographical difference was that, in east Asia, mortality from coronary heart disease had its nadir at 18.5–<20.0 kg/m², lower than in other regions (appendix p 28). In all regions, underweight was associated with substantially higher respiratory disease mortality and somewhat higher mortality from coronary heart disease, stroke, and cancer (figure 4). HRs comparing underweight versus normal-weight cardiovascular disease mortality were more extreme in Europe than elsewhere (appendix pp 28, 29).

Compared with the strict primary analyses described above, crude analyses that ignored smoking and any

effects of prior disease at baseline, and did not exclude the first 5 years of follow-up, yielded different (presumably substantially biased) results, with exaggerated HRs for underweight, inverted HRs for overweight, and less than half of the excess risk for grade 1 obesity suggested by the strict primary analyses (tables 1, 2, appendix p 43).

In sensitivity analyses (appendix pp 30–36, 46–48), HRs were little changed in analyses that used fixed effect models or restricted follow-up to years 5–15; considered age at risk rather than age at baseline; adjusted additionally for race or excluded participants with diabetes at baseline; used only studies with baseline data for both sexes; used only studies with baseline data for heart disease, stroke, and cancer; or subdivided studies by mean baseline BMI or median recruitment year (HRs were somewhat higher in studies starting before 1990 than those after 1990, but meta-regression of HRs on year of recruitment was not significant). HRs did not vary substantially between larger and smaller studies, between studies with measured and self-reported BMI, or between occupational and other studies.

Discussion

Associations between BMI and mortality can help to estimate the public health impact of excess adiposity only if the estimated relationships are not substantially distorted by the effects of smoking or ill health on BMI. Hence, our primary analyses were of never-smokers without previous disease who survived at least 5 years. Both overweight and obesity were associated with increased all-cause mortality. In the BMI range above 25 kg/m² (ie, above the upper limit of the WHO's normal range) the relationship to mortality was steep in every global region we studied, except perhaps south Asia where numbers of deaths were small.²⁷

Our primary analyses challenge previous suggestions that overweight (25–<30 kg/m²) and grade 1 obesity (30–<35 kg/m²) are not associated with higher mortality,²⁸ bypassing speculation about hypothetical protective metabolic effects of increased body fat in apparently healthy individuals.²⁹ In particular, the findings here contrast with those of a 2013 review that claimed that, relative to normal weight, grade 1 obesity was not associated with excess all-cause mortality and that overweight was associated with lower all-cause mortality.²⁸ That review could not, however, control for the biases controlled for in our analysis. Indeed, the results of the current analysis (eg, table 1, table 2, and appendix pp 16, 17) show how the limited ability of that literature-based review to control for bias could have accounted for its misleading findings. Our study was able to reproduce such findings when conducting crude analyses with inadequate control of reverse causality, but not when we conducted appropriately strict analyses.

Despite broadly similar overall findings across different continents, we found some differences. HRs per 5 kg/m²

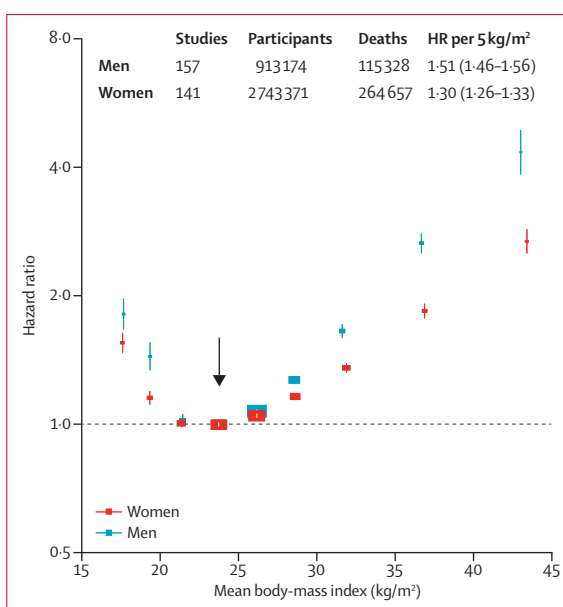


Figure 3: Association of body-mass index with all-cause mortality, by sex

The HR per 5 kg/m² higher body-mass index (BMI) and its 95% CI are calculated only for BMI more than 25.0 kg/m². Analyses restricted to never-smokers without pre-existing chronic disease, excluding the first 5 years of follow-up, and include data from all geographical regions. The reference category is shown with the arrow and is 22.5–<25.0 kg/m². CIs are from floating variance estimates (reflecting independent variability within each category, including reference). Areas of squares are proportional to the information content. Analyses by sex and the three main geographical regions (east Asia, Europe, and North America) are in the appendix (p 39). HR=hazard ratio.

higher BMI above 25 kg/m² appeared to be somewhat greater in Europe than in North America. In each major region we studied, HRs were substantially higher at younger than at older ages, although the absolute excess mortality was higher in older people. HRs were substantially higher in men than in women, consistent with previous observations that, at equivalent BMI levels, men have greater insulin resistance, ectopic (eg, liver) fat levels, and type 2 diabetes prevalence.³⁰ Our primary analyses of never-smokers included, however, far more women than men, particularly at higher BMI levels. Hence, our HRs for obesity (and, above 25.0 kg/m², the excess HR per 5 kg/m² increase in BMI) mainly describe effects in women, despite the substantially larger HRs in men. Our HRs for grade 1 obesity (male 1.70, female 1.37; appendix p 22) suggest that men have almost double the proportional excess mortality of women—but, as age-specific death rates are typically more than 50% higher in men, the absolute excess death rate associated with grade 1 obesity is about three times as great in men (appendix p 45).

Because the prevalence of obesity differs by region, for all-cause mortality there was wide variation across regions in the approximate population-attributable fraction due to overweight and obesity. These findings suggest that if the overweight and obese population had WHO-defined normal levels of BMI, the proportion of premature deaths

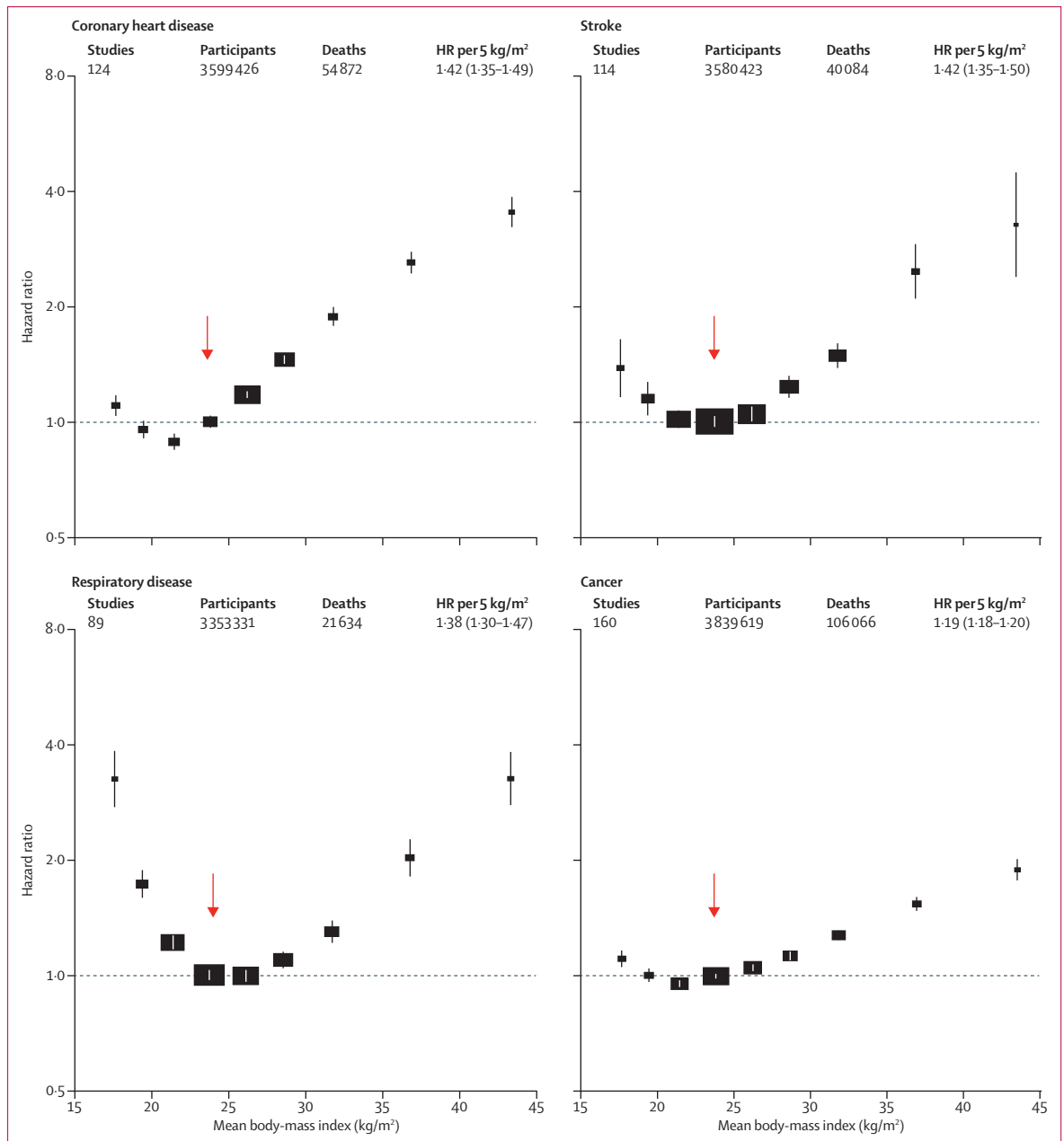


Figure 4: Association of body-mass index with mortality, by major underlying cause

The HR per 5 kg/m² higher body-mass index (BMI) and its 95% CI are calculated only for BMI more than 25.0 kg/m². Analyses restricted to never-smokers without pre-existing chronic disease, excluding the first 5 years of follow-up, and include data from all geographical regions. The reference category is shown with the arrow and is 22.5-25.0 kg/m². CIs are from floating variance estimates (reflecting independent variability within each category, including reference). Areas of squares are proportional to the information content. Analyses of cause-specific mortality by three geographical regions (east Asia, Europe, and North America) are in the appendix (pp 41, 42).

that could be avoided would be about one in five in North America, one in six in Australia and New Zealand, one in seven in Europe, and one in 20 in east Asia, assuming that the associations of overweight and obesity with mortality in our primary analyses largely reflect causal effects. Moreover, BMI is increasing in many populations, so the pattern of high mortality from adiposity in North America

might become typical elsewhere.³¹ At the opposite extreme, there was a substantially higher mortality not only among those in WHO's underweight category, but also in those with BMI 18.5 kg/m² to <20 kg/m², suggesting that in excessively lean adult populations underweight remains a cause for concern. We have no information about whether the BMI in underweight individuals was always low.

Our primary analyses used three main approaches to help avoid bias. First, we restricted analysis to never-smokers to avoid residual confounding by smoking as far as possible because merely adjusting for smoking habits would be unlikely to eliminate important residual biases due to the effect on BMI of different intensities of smoking.¹³ Second, we sought to exclude people known to have specific pre-existing chronic diseases (although full information about this variable was often unavailable). Finally, we omitted the initial 5 years of follow-up from the analysis because diseases at baseline that might cause death over the next 5 years could result in reverse causation (where lower BMI at recruitment is the result, rather than the cause, of the underlying pathology).^{14–16}

Our findings are consistent with other (albeit less precise) studies that have used effective methods to reduce potential bias in evaluations of a causal relationship between excess BMI and mortality, such as Mendelian randomisation analyses,^{32,33} other instrumental variable analyses,³⁴ and a meta-analysis of randomised trials.³⁵ Our findings are also broadly consistent with the stricter analyses done in a 2015 study³⁶ of 12 million Korean adults and with a 2016 review that attempted to limit the effects of reverse causality.³⁷

The most important limitation is that our only measure of adiposity was BMI, so we could not directly address aspects of body composition such as visceral fat or fat distribution,^{38,39} nor could we consider modification of HRs by metabolic factors.⁴⁰ Such factors might have different effects in different populations because, at the same BMI, people of Asian ancestry might have higher amounts of body fat and greater risk of developing metabolic diseases than people of European ancestry.⁴¹ Moreover, south Asia, Africa, and Latin America were either unrepresented or poorly represented, and large studies in those areas might yield different findings. The study-specific results were in general not adjusted for ethnicity or for socioeconomic status. We did not adjust for regression dilution because previous surveys have reported high levels of concordance in replicate BMI measures taken from the same adults some years apart.⁴²

There are, however, particular strengths. Compared with single-country studies, we enhanced generalisability by combining findings from 239 studies across four continents. We had access to data for about 97% of the participants in the studies eligible for this analysis (giving large numbers and negligible bias from unavailability of particular studies), we used a prespecified analysis plan, we analysed individual-participant data to avoid the potentially important limitations of literature-based reviews,⁴³ and we analysed clinically relevant subpopulations reliably, exploiting the considerable statistical power of the study. We avoided potential over-adjustment by not adjusting for variables (eg, diabetes status and physical activity) that could mediate associations between BMI and mortality.⁴⁴ Finally, our results were robust to a variety of sensitivity analyses.

We conclude that wherever overweight and obesity are common their associations with higher all-cause mortality are broadly similar in different populations, supporting strategies to combat the entire spectrum of excessive adiposity worldwide.

Contributors

All of the authors contributed to data collection, and the design, analysis, interpretation, and re-drafting of this paper. EDA, SNB, DW, SK, BJC, RH, SL, MW, JD, and FBH drafted the study protocol and analysis plan. SK, PG, and DW conducted the combined statistical analysis. EDA, SNB, RP, JD, and FBH drafted the manuscript.

The Global BMI Mortality Collaboration

*Writing Committee (*equal contribution)*—Emanuele Di Angelantonio (University of Cambridge, Cambridge, UK)*; Shilpa N Bhupathiraju (Harvard TH Chan School of Public Health, Harvard University, Boston, MA, USA)*; David Wormser (University of Cambridge, Cambridge, UK)*; Pei Gao (University of Cambridge, Cambridge, UK and Peking University, Beijing, China)*; Stephen Kaptoge (University of Cambridge, Cambridge, UK)*; Amy Berrington de Gonzalez (National Cancer Institute, Bethesda, MD, USA)*; Benjamin J Cairns (University of Oxford, Oxford, UK)*; Rachel Huxley (Curtin University, Perth, Australia)*; Chandra L Jackson (Harvard Medical School, Harvard University, Boston, MA, USA)*; Grace Joshy (Australian National University, Canberra, Australia)*; Sarah Lewington (University of Oxford, Oxford, UK)*; JoAnn E Manson (Harvard TH Chan School of Public Health and Harvard Medical School, Harvard University, Boston, MA, USA)*; Neil Murphy (Imperial College London, London, UK)*; Alpa V Patel (American Cancer Society, Atlanta, GA, USA)*; Jonathan M Samet (University of Southern California, Los Angeles, CA, USA)*; Mark Woodward (University of Oxford, Oxford, UK; University of Sydney, NSW, Australia; and Johns Hopkins University, Baltimore, MD, USA)*; Wei Zheng (Vanderbilt University Medical Center, Nashville, TN, USA)*; Maigen Zhou (Chinese Center for Disease Control and Prevention, Beijing, China)*; Narinder Bansal (University of Cambridge, Cambridge, UK); Aurelio Barricarte (Navarre Public Health Institute and Consortium for Biomedical Research in Epidemiology and Public Health, Pamplona, Spain); Brian Carter (American Cancer Society, Atlanta, GA, USA); James R Cerhan (Mayo Clinic, Rochester, MN, USA); Rory Collins (University of Oxford, Oxford, UK); George Davey Smith (University of Bristol, Bristol, UK); Xianghua Fang (Capital Medical University, Beijing, China); Oscar H Franco (University Medical Center Rotterdam, Rotterdam, Netherlands); Jane Green (University of Oxford, Oxford, UK); Jim Halsey (University of Oxford, Oxford, UK); Janet S Hildebrand (American Cancer Society, Atlanta, GA, USA); Keum Ji Jung (Yonsei University, Seoul, Korea); Rosemary J Korda (Australian National University, Canberra, Australia); Dale F McLerran (Fred Hutchinson Cancer Research Center, Seattle, WA, USA); Steven C Moore (National Cancer Institute, Bethesda, MD, USA); Linda M O’Keeffe (University of Cambridge, Cambridge, UK); Ellie Paige (University of Cambridge, Cambridge, UK); Anna Ramond (University of Cambridge, Cambridge, UK); Gillian K Reeves (University of Oxford, Oxford, UK); Betsy Rolland (National Cancer Institute, Bethesda, MD, USA); Carlotta Sacerdote (University of Turin, Center for Cancer Prevention, Turin, Italy); Naveed Sattar (University of Glasgow, Glasgow, UK); Eleni Sofianopoulou (University of Cambridge, Cambridge, UK); June Stevens (University of North Carolina, Chapel Hill, NC, USA); Michael Thun (American Cancer Society, Atlanta, GA, USA); Hirotsugu Ueshima (Shiga University of Medical Science, Shiga, Japan); Ling Yang (University of Oxford, Oxford, UK); Young Duk Yun (Health Insurance Policy Research Institute, Seoul, South Korea); Peter Willeit (University of Cambridge, Cambridge, UK and Medical University Innsbruck, Innsbruck, Austria); Emily Banks (Australian National University, Canberra, ACT, Australia)*; Valerie Beral (University of Oxford, Oxford, UK)*; Zhengming Chen (University of Oxford, Oxford, UK)*; Susan M Gapstur (American Cancer Society, Atlanta, GA, USA)*; Marc J Gunter (International Agency for Research on Cancer, Lyon, France)*; Patricia Hartge (National Cancer Institute, Bethesda, MD, USA)*; Sun Ha Jee (Yonsei University, Seoul, Korea)*; Tai-Hing Lam (University of Hong Kong, Hong Kong, China)*; Richard Peto (University of Oxford, Oxford, UK)*; John D Potter (Massey

University, Wellington, New Zealand)*; Walter C Willett (Harvard TH Chan School of Public Health and Harvard Medical School, Harvard University, Boston, MA, USA)*; Simon G Thompson (University of Cambridge, Cambridge, UK)*; John Danesh (University of Cambridge, Cambridge, UK)*; Frank B Hu (Harvard TH Chan School of Public Health and Harvard Medical School, Harvard University, Boston, MA, USA)*.

Declaration of interests

EDA received research funding from UK Medical Research Council, British Heart Foundation, National Institute of Health Research, NHS Blood and Transplant, European Commission Framework Programme during the conduct of the study; and personal fees from Elsevier (France). Since January, 2014, DW has been a full-time employee of F. Hoffmann-La Roche and received personal fees and holding shares in F. Hoffmann-La Roche. PG received grants from Recruitment Program for Young Professionals in China and British Heart Foundation. BJC, JG, GKR, and VB received research funding from Cancer Research UK and Medical Research Council. BJC received funding from the British Heart Foundation Centre of Research Excellence, Oxford. MW received personal fees from Novartis and Amgen. OHF received research funding from Nestle and Metagenics. RJK received grants from National Health and Medical Research Council. NS received personal fees from AstraZeneca, Boehringer Ingelheim, and Janssen. EB received grants from National Health and Medical Research Council of Australia and National Heart Foundation of Australia. SGT received grants from UK Medical Research Council and British Heart Foundation. JD has received research funding from the British Heart Foundation, NIHR Cambridge Comprehensive Biomedical Research Centre, BUPA Foundation, diaDexus, European Research Council, European Union, Evelyn Trust, Fogarty International Centre, GlaxoSmithKline, Merck, National Heart, Lung and Blood Institute, National Institute for Health Research, National Institute of Neurological Disorders and Stroke, NHS Blood and Transplant, Novartis, Pfizer, UK Medical Research Council, and Wellcome Trust. All other members of the writing committee declare no competing interests.

Acknowledgments

This paper is dedicated to the memory of Gary Whitlock, who contributed much to developing the collaboration. Global BMI Mortality Collaboration provides links to websites of the component studies (or consortia), many of which describe their funding. The coordinating centre at the University of Cambridge was funded by the UK Medical Research Council (G0800270), British Heart Foundation (SP/09/002), British Heart Foundation Cambridge Cardiovascular Centre of Excellence, and National Institute for Health Research Cambridge Biomedical Research Centre. The work of the coordinating centre at the Harvard TH Chan School of Public Health was funded by grants P01 CA87969, UM1 CA167626, UM1 CA167552, DK58845, P30 DK046200, and U54 CA155626 from the National Institutes of Health. This research has been conducted using the UK Biobank resource.

References

- Ng M, Fleming T, Robinson M, et al. Global, regional, and national prevalence of overweight and obesity in children and adults during 1980–2013: a systematic analysis for the Global Burden of Disease Study 2013. *Lancet* 2014; **384**: 766–81.
- NCD Risk Factor Collaboration (NCD-RisC). Trends in adult body-mass index in 200 countries from 1975 to 2014: a pooled analysis of 1698 population-based measurement studies with 19.2 million participants. *Lancet* 2016; **387**: 1377–96.
- WHO. Obesity and overweight. Fact sheet N°311. Geneva: World Health Organization, 2015.
- WHO expert consultation. Appropriate body-mass index for Asian populations and its implications for policy and intervention strategies. *Lancet* 2004; **363**: 157–63.
- Asia Pacific Cohort Studies Collaboration. Body mass index and cardiovascular disease in the Asia-Pacific region: an overview of 33 cohorts involving 310 000 participants. *Int J Epidemiol* 2004; **33**: 751–58.
- Berrington de Gonzalez A, Hartge P, Cerhan JR, et al. Body-mass index and mortality among 1.46 million white adults. *N Engl J Med* 2010; **363**: 2211–19.
- Jee SH, Sull JW, Park J, et al. Body-mass index and mortality in Korean men and women. *N Engl J Med* 2006; **355**: 779–87.

- Patel AV, Hildebrand JS, Gapstur SM. Body mass index and all-cause mortality in a large prospective cohort of white and black US adults. *PLoS One* 2014; **9**: e109153.
- Pischon T, Boeing H, Hoffmann K, et al. General and abdominal adiposity and risk of death in Europe. *N Engl J Med* 2008; **359**: 2105–20.
- Prospective Studies Collaboration. Body-mass index and cause-specific mortality in 900 000 adults: collaborative analyses of 57 prospective studies. *Lancet* 2009; **373**: 1083–96.
- The Emerging Risk Factors Collaboration. Separate and combined associations of body-mass index and abdominal adiposity with cardiovascular disease: collaborative analysis of 58 prospective studies. *Lancet* 2011; **377**: 1085–95.
- Zheng W, McLerran DF, Rolland B, et al. Association between body-mass index and risk of death in more than 1 million Asians. *N Engl J Med* 2011; **364**: 719–29.
- Bamia C, Trichopoulos A, Lenas D, Trichopoulos D. Tobacco smoking in relation to body fat mass and distribution in a general population sample. *Int J Obes Relat Metab Disord* 2004; **28**: 1091–96.
- Manson JE, Stampfer MJ, Hennekens CH, Willett WC. Body weight and longevity: a reassessment. *JAMA* 1987; **257**: 353–58.
- Singh PN, Wang X. Simulation study of the effect of the early mortality exclusion on confounding of the exposure-mortality relation by preexisting disease. *Am J Epidemiol* 2001; **154**: 963–71.
- Willett WC, Hu FB, Thun M. Overweight, obesity, and all-cause mortality. *JAMA* 2013; **309**: 1681–82.
- Stewart LA, Clarke M, Rovers M. Preferred reporting items for a systematic review and meta-analysis of individual participant data: the prisma-IPD statement. *JAMA* 2015; **313**: 1657–65.
- Park SY, Wilkens L, Murphy S, Monroe K, Henderson B, Kolonel L. Body mass index and mortality in an ethnically diverse population: the Multiethnic Cohort Study. *Eur J Epidemiol* 2012; **27**: 489–97.
- Lin WY, Tsai SL, Albu JB, et al. Body mass index and all-cause mortality in a large Chinese cohort. *Can Med Assoc J* 2011; **183**: E329–36.
- NHLBI Expert Panel on the Identification, Evaluation, and Treatment of Overweight and Obesity in Adults. Clinical guidelines on the identification, evaluation, and treatment of overweight and obesity in adults—the evidence report. *Obes Res* 1998; **6** (suppl 2): 51S–209.
- Plummer M. Improved estimates of floating absolute risk. *Stat Med* 2004; **23**: 93–104.
- Jackson D, White IR, Thompson SG. Extending DerSimonian and Laird's methodology to perform multivariate random effects meta-analyses. *Stat Med* 2010; **29**: 1282–97.
- Preston SH, Mehta NK, Stokes A. Modeling obesity histories in cohort analyses of health and mortality. *Epidemiology* 2013; **24**: 158–66.
- Thompson S, Kaptoge S, White I, Wood A, Perry P, Danesh J. Statistical methods for the time-to-event analysis of individual participant data from multiple epidemiological studies. *Int J Epidemiol* 2010; **39**: 1345–59.
- Stevens G, Singh G, Lu Y, et al. National, regional, and global trends in adult overweight and obesity prevalences. *Popul Health Metr* 2012; **10**: 22.
- Higgins JP, Thompson SG. Quantifying heterogeneity in a meta-analysis. *Stat Med* 2002; **21**: 1539–58.
- Jensen MD, Ryan DH, Apovian CM, et al. 2013 AHA/ACC/TOS guideline for the management of overweight and obesity in adults: a report of the American College of Cardiology/American Heart Association Task Force on Practice Guidelines and The Obesity Society. *Circulation* 2014; **129** (suppl 2): S102–38.
- Flegal KM, Kit BK, Orpana H, Graubard BI. Association of all-cause mortality with overweight and obesity using standard body mass index categories: a systematic review and meta-analysis. *JAMA* 2013; **309**: 71–82.
- Doehner W, Clark A, Anker SD. The obesity paradox: weighing the benefit. *Eur Heart J* 2010; **31**: 146–48.
- Sattar N. Gender aspects in type 2 diabetes mellitus and cardiometabolic risk. *Best Pract Res Clin Endocrinol Metab* 2013; **27**: 501–07.
- Gillman MW, Ludwig DS. How early should obesity prevention start? *N Engl J Med* 2013; **369**: 2173–75.
- Nordstgaard BG, Palmer TM, Benn M, et al. The effect of elevated body mass index on ischemic heart disease risk: causal estimates from a Mendelian randomisation approach. *PLoS Med* 2012; **9**: e1001212.

For more on Gary Whitlock see *Perspectives Lancet* 2014; **383**: 1458

For the Global BMI Mortality Collaboration see <http://www.phpc.cam.ac.uk/ceu/research/global-bmi-mortality-collaboration>

- 33 Hagg S, Fall T, Ploner A, et al. Adiposity as a cause of cardiovascular disease: a Mendelian randomization study. *Int J Epidemiol* 2015; **44**: 578–86.
- 34 Davey Smith G, Sterne JA, Fraser A, Tynelius P, Lawlor DA, Rasmussen F. The association between BMI and mortality using offspring BMI as an indicator of own BMI: large intergenerational mortality study. *BMJ* 2009; **339**: b5043.
- 35 Kritchevsky SB, Beavers KM, Miller ME, et al. Intentional weight loss and all-cause mortality: a meta-analysis of randomized clinical trials. *PLoS One* 2015; **10**: e0121993.
- 36 Yi SW, Ohrr H, Shin SA, Yi JJ. Sex-age-specific association of body mass index with all-cause mortality among 12·8 million Korean adults: a prospective cohort study. *Int J Epidemiol* 2015; **44**: 1696–705.
- 37 Aune D, Sen A, Prasad M, et al. BMI and all cause mortality: systematic review and non-linear dose-response meta-analysis of 230 cohort studies with 3·74 million deaths among 30·3 million participants. *BMJ* 2016; **353**: i2156.
- 38 Bohm A, Heitmann BL. The use of bioelectrical impedance analysis for body composition in epidemiological studies. *Eur J Clin Nutr* 2013; **67**: S79–85.
- 39 Britton KA, Massaro JM, Murabito JM, Kreger BE, Hoffmann U, Fox CS. Body fat distribution, incident cardiovascular disease, cancer, and all-cause mortality. *J Am Coll Cardiol*. 2013; **62**: 921–25.
- 40 Kramer CK, Zinman B, Retnakaran R. Are metabolically healthy overweight and obesity benign conditions? A systematic review and meta-analysis. *Ann Intern Med* 2013; **159**: 758–69.
- 41 Chan JN, Malik V, Jia W. Diabetes in Asia: epidemiology, risk factors, and pathophysiology. *JAMA* 2009; **301**: 2129–40.
- 42 Wormser D, White IR, Thompson SG, Wood AM. Within-person variability in calculated risk factors: comparing the aetiological association of adiposity ratios with risk of coronary heart disease. *Int J Epidemiol* 2013; **42**: 849–59.
- 43 Stewart LA, Clarke MJ. Practical methodology of meta-analyses (overviews) using updated individual patient data. Cochrane Working Group. *Stat Med* 1995; **14**: 2057–79.
- 44 Van Gaal LF, Mertens IL, De Block CE. Mechanisms linking obesity with cardiovascular disease. *Nature* 2006; **444**: 875–80.