

IL-25/IL-33-responsive T_H2 cells characterize nasal polyps with a default T_H17 signature in nasal mucosa



Emily P. S. Lam, PhD,^{a,h} Harsha H. Kariyawasam, FRCP, PhD,^{b,h,*} Batika M. J. Rana, PhD,^{c,h*} Stephen R. Durham, MD, FRCP,^{d,h} Andrew N. J. McKenzie, PhD,^c Nicholas Powell, MRCP, PhD,^e Nara Orban, MD,^d Melissa Lennartz-Walker, MSc,^{a,h} Claire Hopkins, FRCS (ORL-HNS),^g Sun Ying, MD, PhD,^a Joanne Rimmer, FRCS (ORL-HNS),^b Valerie J. Lund, MD, FRCS,^b David J. Cousins, PhD,^{f,h,‡} and Stephen J. Till, FRCP, PhD^{a,h,‡} London, Cambridge, and Leicester, United Kingdom

Background: Chronic rhinosinusitis with nasal polyposis (CRSwNP) in Western countries is characterized by eosinophilia, IgE production, and T_H2 cytokine expression. Type 2 innate lymphoid cells from polyps produce IL-5 and IL-13 in response to IL-25 and IL-33, although the relevance of this axis to local mucosal T-cell responses is unknown. **Objective:** We sought to investigate the role of the IL-25/IL-33 axis in local mucosal T-cell responses in patients with CRSwNP.

From ^athe Division of Asthma, Allergy and Lung Biology, Guy's Hospital, King's College London; ^bthe Allergy and Medical Rhinology Section, Royal National Throat Nose Ear Hospital, University College London; ^cthe Medical Research Council Laboratory of Molecular Biology, Cambridge; ^dthe Section of Allergy and Clinical Immunology, National Heart and Lung Institute, Imperial College London; ^ethe Division of Transplantation Immunology and Mucosal Biology and Medical Research Council Centre for Transplantation, King's College London; ^fthe Department of Infection, Immunity and Inflammation, NIHR Leicester Respiratory Biomedical Research Unit, Leicester Institute for Lung Health, University of Leicester; ^gthe Department of ENT, Guy's and St Thomas' Hospital, London; and ^hthe Medical Research Council and Asthma UK Centre in Allergic Mechanisms of Asthma, London.

*These authors contributed equally to this work.

‡These authors contributed equally to this work.


S.J.T. was supported by a Clinician Scientist Fellowship from The Health Foundation and Academy of Medical Sciences and an HEFCE Clinical Senior Lectureship Award. B.M.J.R. and E.P.S.L. were supported by MRC-Asthma UK PhD studentships. D.J.C. was supported by grants from the Medical Research Council and Asthma UK. This research was also supported by the National Institute for Health Research (NIHR) Biomedical Research Centre at Guy's and St Thomas' NHS Foundation Trust and King's College London and the NIHR Leicester Respiratory Biomedical Research Unit. The views expressed are those of the author(s) and not necessarily those of the NHS, the NIHR or the Department of Health.

Disclosure of potential conflict of interest: A. N. J. McKenzie receives research support from Janssen, GlaxoSmithKline, and AstraZeneca, royalties and patents from Janssen. N. Powell receives consulting fees from Abbvie and Actavis and receives travel support from Actavis and Ferring. C. Hopkins serves as a consultant for Acclarent and speaker for Acclarent and Medtronic. Valerie J. Lund receives research support from GlaxoSmithKline, Optinose, and the National Institute for Health Research (NIHR); speaker's fees from MSD; and royalties from Elsevier. D. J. Cousins receives research support from Medical Research Council, Asthma UK, the NIHR, and GlaxoSmithKline. S. J. Till serves as a paid consultant for ALK-Abelló and receives speaker fees from Thermo Fisher. The rest of the authors declare that they have no relevant conflicts of interest.

Received for publication February 20, 2015; revised October 1, 2015; accepted for publication October 9, 2015.

Available online December 10, 2015.

Corresponding author: Stephen J. Till, FRCP, PhD, Division of Asthma, Allergy and Lung Biology, King's College London, Guy's Hospital, London SE1 9RT, United Kingdom. E-mail: stephen.till@kcl.ac.uk.

 The CrossMark symbol notifies online readers when updates have been made to the article such as errata or minor corrections

0091-6749

© 2015 The Authors. Published by Elsevier Inc. on behalf of the American Academy of Allergy, Asthma & Immunology. This is an open access article under the CC BY license (<http://creativecommons.org/licenses/by/4.0/>).

<http://dx.doi.org/10.1016/j.jaci.2015.10.019>

Methods: Polyp tissue and blood were obtained from patients undergoing nasal polypectomy. Control nasal biopsy specimens and blood were obtained from healthy volunteers. Tissue was cultured in a short-term explant model. T-cell surface phenotype/intracellular cytokines were assessed by means of flow cytometry. T-cell receptor variable β -chain analysis was performed with the immunoSEQ assay. Microarrays were performed for gene expression analysis.

Results: IL-25 receptor (IL-17RB)-expressing T_H2 effector cells were identified in nasal polyp tissue but not the healthy nasal mucosa or periphery. IL-17RB⁺CD4⁺ polyp-derived T_H2 cells coexpressed ST2 (IL-33 receptor) and responded to IL-25 and IL-33 with enhanced IL-5 and IL-13 production. Within IL-17RB⁺CD4⁺ T cells, several identical T-cell receptor variable β -chain complementarity-determining region 3 sequences were identified in different subjects, suggesting clonal expansion driven by a common antigen. Abundant IL-17-producing T cells were observed in both healthy nasal mucosal and polyp populations, with T_H17-related genes the most overexpressed compared with peripheral blood T cells. **Conclusion:** IL-25 and IL-33 can interact locally with IL-17RB⁺ST2⁺ polyp T cells to augment T_H2 responses in patients with CRSwNP. A local T_H17 response might be important in healthy nasal mucosal immune homeostasis. (J Allergy Clin Immunol 2016;137:1514-24.)

Key words: Chronic rhinosinusitis with nasal polyps, nasal mucosa, IL-25, IL-33, IL-17RB, ST2, T-cell phenotype, T_H2 cells, T_H17 cells, T-cell receptor V β repertoire, microarray

Chronic rhinosinusitis with nasal polyposis (CRSwNP) is an umbrella term for a heterogeneous group of inflammatory disorders characterized by persistent polypoid inflammation of the sinonasal mucosa (≥ 12 weeks) and nasal obstruction.¹ Symptoms are often severe and only partially responsive to treatment, and disease is commonly associated with difficult-to-treat asthma.^{1,2} There is an urgent unmet clinical need to understand the immunopathology of CRSwNP. Several studies have indicated regional variation in CRSwNP endotypes. Western countries show a predominance of eosinophilic T_H2-associated polyps, and *Staphylococcus aureus* superantigens have been implicated in driving the T_H2 response.³⁻⁵ Conversely, CRSwNP in patients from southern Asia is associated with neutrophilic infiltration and a local T_H1/T_H17 signature.^{3,4,6} Although potential sources of proeosinophilic cytokines in patients with CRSwNP include T cells, type 2 innate lymphoid cells (ILC2s),

Abbreviations used

AIM2: Absent in melanoma 2
 CDR3: Complementarity-determining region 3
 CRSwNP: Chronic rhinosinusitis with nasal polyposis
 CRTH2: Chemoattractant receptor-homologous molecule expressed on T_H2 cells
 ILC2: Type 2 innate lymphoid cell
 TCR Vβ: T-cell receptor variable β-chain

mast cells, and eosinophils, the local immune mechanisms regulating cytokine production remain poorly understood. Relatively little is also known of T-cell responses in the healthy nasal mucosa, although the local microenvironment appears to suppress T_H2 responses.⁷

Recently, the epithelial cell-derived cytokines IL-25 and IL-33, acting through their respective receptors IL-17RB and ST2, have been implicated in promoting T_H2 responses in animal models of allergic inflammation.⁸⁻¹⁰ Expression of IL-17RB has been demonstrated on human peripheral blood T_H2 cells differentiated *in vitro* by thymic stromal lymphopoietin-treated dendritic cells and on freshly isolated CD4⁺ T cells from patients with Churg-Strauss syndrome.^{11,12} IL-25 is also expressed within the bronchial mucosa of asthmatic patients and in the skin during allergen-induced late responses.^{11,13} Furthermore, ILC2s coexpress IL-17RB and ST2 and produce IL-5 and IL-13 in response to IL-25 and IL-33.^{14,15} ST2 is associated with T_H2 immune responses in mice,^{16,17} and expression is increased in ILC2s and eosinophils from patients with CRSwNP.¹⁸⁻²⁰ In human subjects baseline levels of IL-33 mRNA in epithelial cells derived from treatment-recalcitrant nasal polyps are increased compared with levels in cells derived from treatment-responsive nasal polyps.²¹ However, the local mucosal T-cell response in patients with CRSwNP and the potential interaction of T cells in the nasal mucosa with IL-25 or IL-33 have not been explored.

Therefore we hypothesized that the IL-25/IL-33 axis is involved in directing local mucosal T_H2 responses in patients with eosinophilic CRSwNP. To test this hypothesis, we extensively phenotyped nasal T-cell responses from tissue explants of patients with CRSwNP and healthy control subjects.

METHODS

Detailed methods used in this study and reagent sources can be found in the **Methods** section in this article's Online Repository at www.jacionline.org. Clinical and demographic data for patients with CRSwNP and healthy volunteers are shown in **Table E1** in this article's Online Repository at www.jacionline.org.

RESULTS

Nasal polyp explant T cells are of an effector memory phenotype

The majority of donor-matched polyp- and peripheral blood-derived CD4⁺ and CD8⁺ T cells were determined to be αβ T cells. γδ T cells formed a minimal proportion of the T-cell population (see **Fig E1** and **Table E2** in this article's Online Repository at www.jacionline.org). After short-term culture, both polyp and blood populations expressed high levels of CD45RO, which is consistent with a memory phenotype after restimulation. The majority of T cells in polyp cultures expressed significantly

less CD62 ligand and CCR7 compared with blood T cells and displayed higher expression of CD49a, an integrin expressed by tissue-resident memory cells,^{22,23} suggesting that nasal polyp-derived T cells were predominately of an effector memory phenotype.²⁴

T_H17 and T_H2 cytokine profiles are detected in nasal polyps

Intracellular cytokine staining was performed on CD4⁺ T cells expanded from polyp explants and peripheral blood in parallel to establish the T_H cell cytokine profile. CD4⁺ T cells derived from polyps expressed significantly higher percentages of IL-17⁺ and IL-22⁺ cells together with T_H2 cytokine (IL-5, IL-9, and IL-13)-producing cells (**Fig 1, A and B**), all of which showed negligible expression in expanded peripheral blood CD4⁺ T cells from the same donors. In addition, coexpression of IL-17 with IL-22 and IFN-γ was detected (see **Fig E2** in this article's Online Repository at www.jacionline.org). A significantly higher percentage of polyp T cells produced the proinflammatory cytokine TNF-α, although IFN-γ expression was equivalent in CD4⁺ T cells from both sources.

T_H2 cytokine production is specific to CRSwNP, but T_H17 cytokines are produced by nasal T cells from normal and inflamed tissue

We next examined whether this cytokine expression profile in polyp explants was disease or tissue specific. Therefore T-cell phenotypes were compared with those from nasal mucosal biopsy specimens from healthy volunteers. IL-17 was produced by a comparable percentage of T cells derived from healthy nasal and nasal polyp explants (**Fig 1, C**) and confirmed at the protein level in cell-culture supernatants. Minimal IL-13⁺ cells were observed in the healthy nasal mucosa (**Fig 1, C**). Although IL-4 expression was not examined by using flow cytometry, significantly increased IL-4 levels, in addition to IL-5 and IL-13 levels, were detected in the supernatants of polyp explant cultures compared with those seen in healthy nasal mucosa explants (see **Fig E3** in this article's Online Repository at www.jacionline.org).

IL-17RB is expressed by *in vitro* T_H2-polarized but not T_H1-polarized cells

The IL-25 receptor IL-17RB is associated with T_H2 cells and the promotion of T_H2 responses.^{9,11} We sought to examine IL-17RB expression in homogenous human T_H1/T_H2 CD4⁺ populations differentiated from naive peripheral blood T cells, as previously described.²⁵ Differentiated cells were highly polarized toward a T_H1 (IFN-γ⁺, T-box transcription factor [T-bet]⁺, and IL-12 receptor β2 [IL-12Rβ2]⁺) or T_H2 (IL-4⁺, IL-5⁺, GATA-3⁺, and chemoattractant receptor-homologous molecule expressed on T_H2 cells [CRTH2]⁺) phenotype, and a significant increase in *IL17RB* gene expression was observed in T_H2 versus T_H1 cell lines (**Fig 2, A**). IL-17RB expression increased with time in *in vitro* T_H2-polarized T-cell cultures only (**Fig 2, B and C**), which followed similar kinetics to type 2 cytokine production (data not shown). Furthermore, IL-17RB expression was correlated with IL-13 expression in T_H2 cell cultures (**Fig 2, D**). Together, these data suggest IL-17RB to be a robust marker of human T_H2 cells.

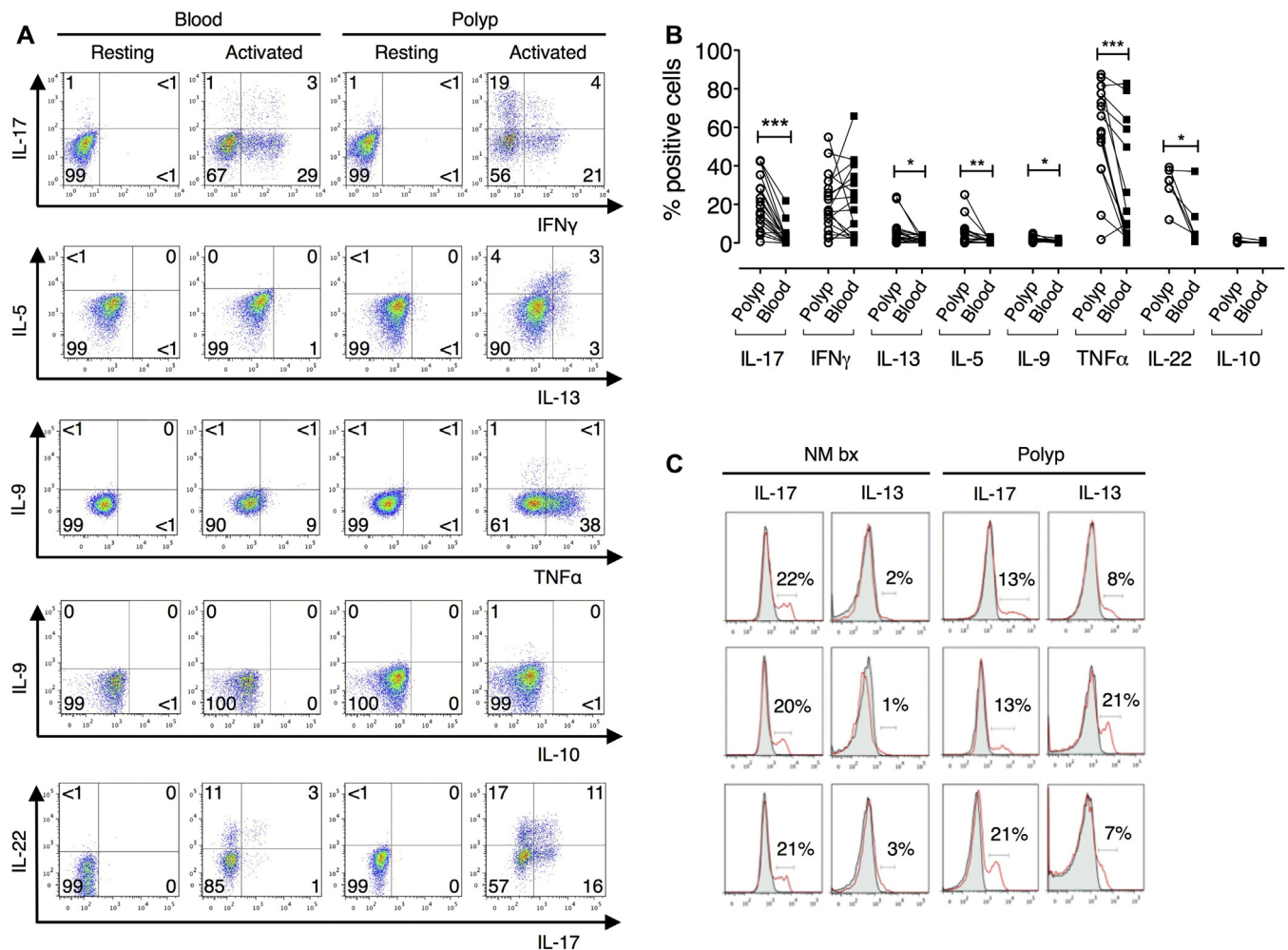


FIG 1. Differential expression of T_H2/T_H17 cytokines by polyp- and normal nasal mucosa-derived $CD4^+$ cells. **A**, Representative staining on paired $CD4^+$ blood and polyp cells. **B**, Percentages of polyp versus blood $CD4^+$ cells producing cytokines (Wilcoxon matched-pairs signed-rank test, $n = 6-18$). **C**, IL-17 and IL-13 histograms for $CD4^+$ biopsy and polyp cells ($n = 3$). Each row indicates an individual subject. Gray, Resting; red, activated. NM bx, Healthy nasal mucosa biopsy specimen. * $P < .05$, ** $P < .01$, and *** $P < .001$.

IL-17RB⁺ cells are a distinct T_H2 cell population present in nasal polyps

We next examined whether T-cell expression of IL-17RB is also a feature of target organ tissue $CD4^+$ cells in eosinophilic polyps. A substantial proportion of polyp $CD4^+$ T cells expressed IL-17RB, whereas negligible IL-17RB expression was observed in matched peripheral blood or healthy nasal mucosal specimens (Fig 3). Coexpression of IL-17RB with the T_H2 -associated prostaglandin D_2 receptor CRTH2 (Fig 3, B) was also detected, but IL-17RB expression was negligible on T_H1 -associated CCR6⁺ or T_H1 -associated CXCR3⁺ cells. Consistent with the high frequency of IL-17⁺ cells, an abundance of CCR6-expressing cells was also found in both healthy nasal mucosa and polyp explants (Fig 3, A and C). $CD8^+$ cells showed similar surface molecule expression patterns to $CD4^+$ cells, although lower percentages of cells positive for the surface molecules examined were generally observed (see Fig E4 in this article's Online Repository at www.jacionline.org).

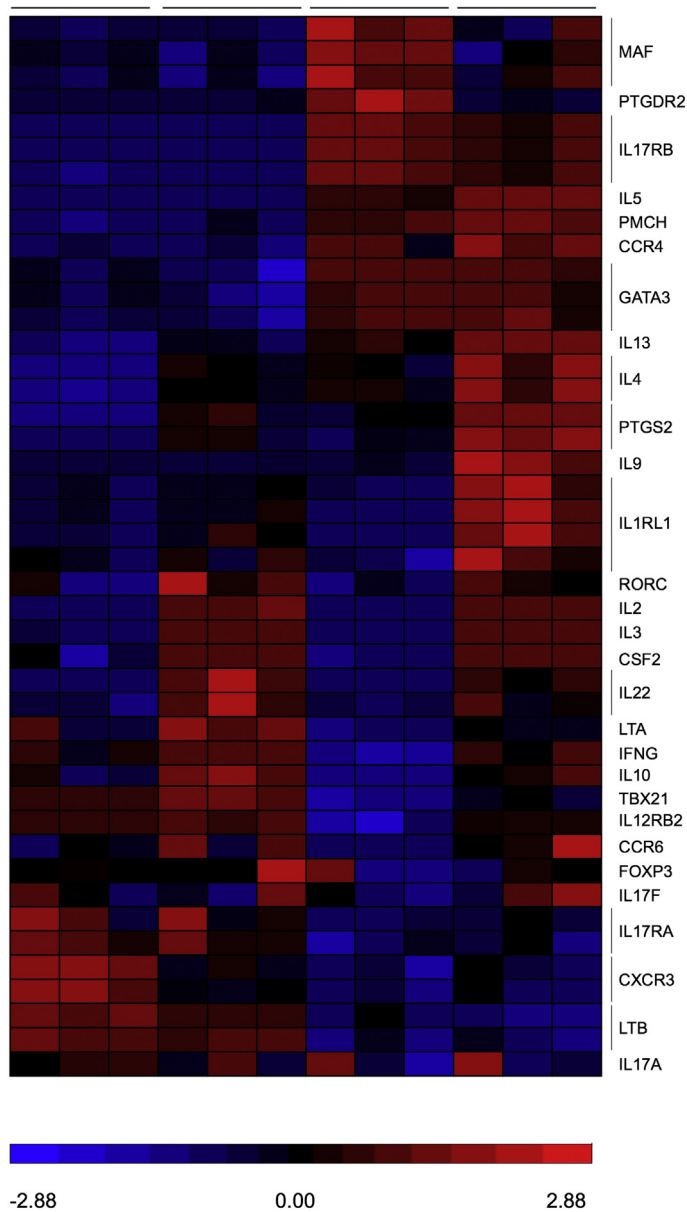
Although short-term cultures were used to generate sufficient cell numbers for experimentation, flow cytometric analysis of

polyp tissue T cells immediately after collagenase digestion confirmed IL-17RB expression was not a culture artifact (see Fig E5 in this article's Online Repository at www.jacionline.org). Furthermore, percentages of T_H2 and IL-17-producing cells were increased in digested polyp- versus blood-derived cells, which is consistent with findings from explant cultures.

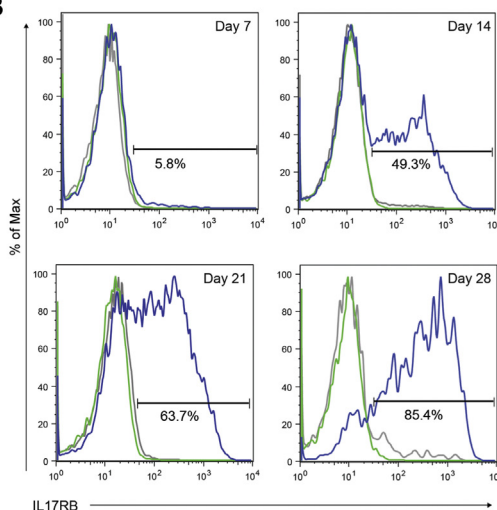
IL-17RB⁺ $CD4^+$ cells derived from nasal polyp explants represent *in vivo* differentiated memory T_H2 cells

To further address the phenotype of IL-17RB⁺ $CD4^+$ cells from nasal polyp explants, explant-derived cells were sorted by means of fluorescence-activated cell sorting for IL-17RB⁺ $CD4^+$ expression after short-term expansion. IL-17RB⁻ $CD4^+$ cells were also sorted for comparison. T_H2 -associated genes, including *IL4*, *IL5*, *IL9*, *IL13*, and *GATA3*, showed considerable upregulation in activated IL-17RB⁺ $CD4^+$ versus activated IL-17RB⁻ $CD4^+$ cells (Fig 4, A), with differential expression for a majority of these genes reaching statistical significance

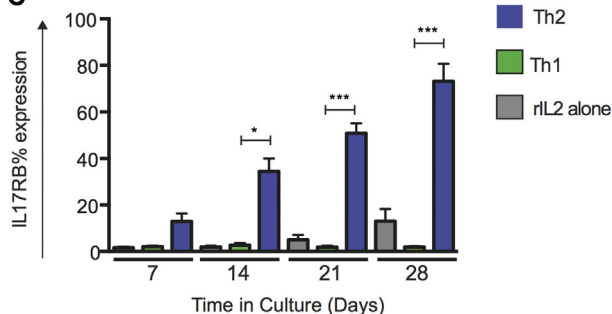
A Th1-Resting Th1-Activated Th2-Resting Th2-Activated



B Th2 Th1 rIL2 alone



C



D

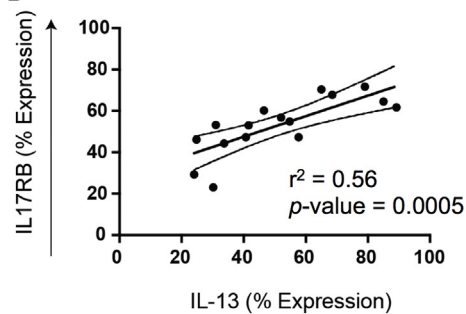


FIG 2. IL-17RB is a marker of T_H2 cells. **A**, Comparison of activated T_H1 versus T_H2 samples identified 292 differentially expressed genes. The heat map shows selected T_H1/T_H2 -associated genes. **B**, Representative data for IL-17RB expression by $CD4^+$ cells cultured with IL-2/ T_H1/T_H2 differentiation conditions. **C**, Mean frequency of IL-17RB $^+$ cells in culture over time (T_H1/T_H2 , n = 7-11; rIL-2 alone, n = 3-6). **D**, Linear regression analysis of IL-17RB/IL-13 expression in T_H2 conditions (n = 4). * $P < .05$ and *** $P < .001$.

(see Table E3 in this article's Online Repository at www.jacionline.org). Furthermore, correspondingly lower expression of T_H1 -associated genes, including *IFNG*, *LTA*, and *CCL3*, was identified. Moreover, the genes for promelanin-concentrating hormone and prostaglandin-endoperoxide synthase 2 were preferentially expressed in IL-17RB $^+$ cells in line with data from *in vitro* polarized T_H2 cultures (Fig 2, A) and previously published findings.^{26,27} Microarray-based gene expression results were confirmed by using quantitative RT-PCR analysis (see Fig E6 in this article's Online Repository at www.jacionline.org).

IL-17RB $^+$ cells predominantly and selectively produce T_H2 cytokines

We next examined whether IL-17RB expression colocalized with T_H2 cytokines in nasal polyp explant T-cell cultures. Fig 4, B, shows the percentage of cells expressing IL-17RB when segregated by cytokine production. IL-5-producing, IL-13-producing, and IL-5/IL-13-coproducing cells were approximately 5 times more likely to coexpress IL-17RB compared with T_H1/T_H17 cytokine-producing cells (ie, 52% of IL-5-producing cells were IL-17RB $^+$, whereas 8% of IFN- γ -producing cells were IL-17RB $^+$). In addition, IL-17RB $^+$ cells were accountable for

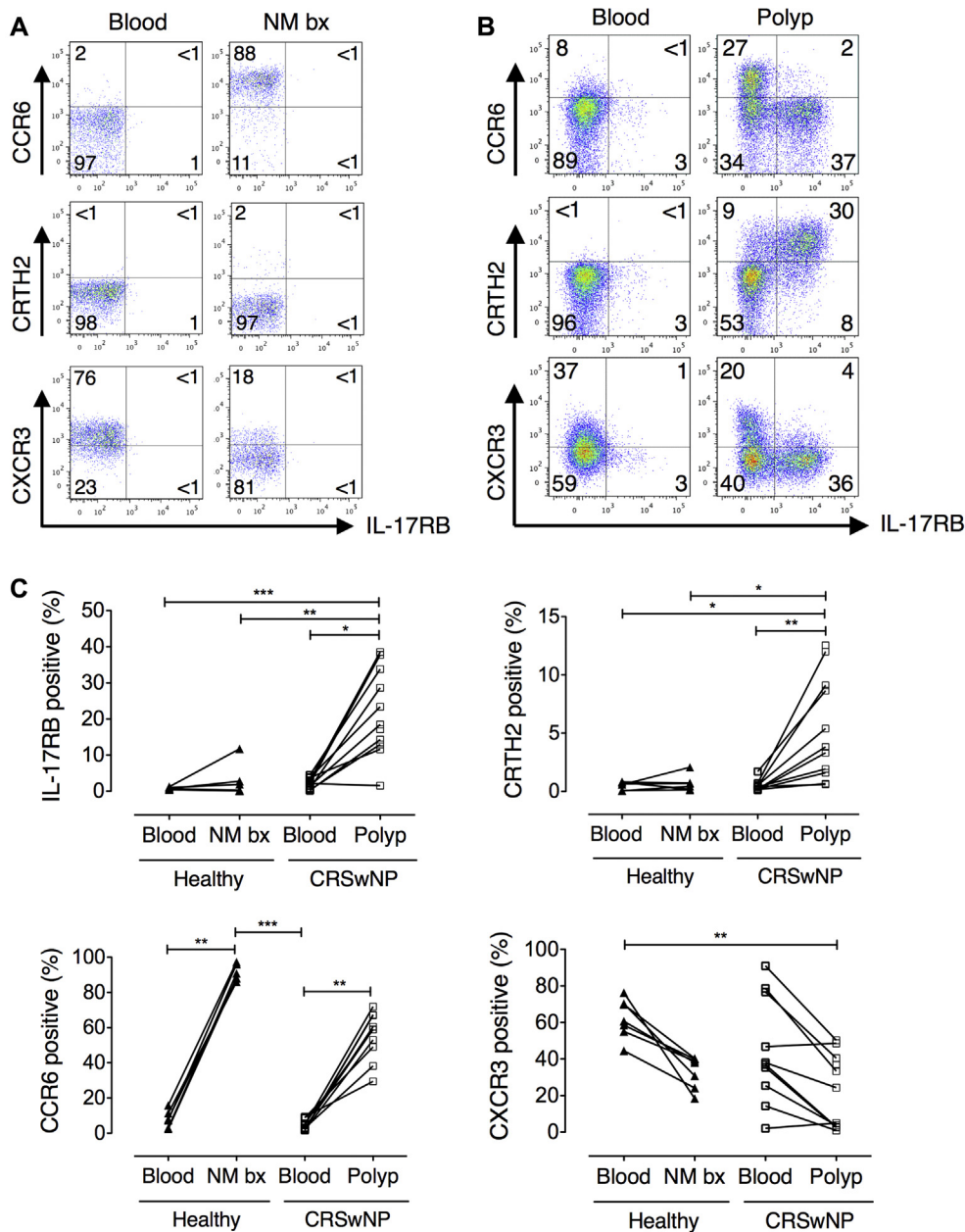


FIG 3. IL-17RB is expressed exclusively by polyp CD4⁺ T cells. **A** and **B**, Representative staining for T-cell phenotypic markers by polyp, healthy nasal biopsy, and paired peripheral blood cells. **C**, Expression of phenotypic markers by CD4⁺ T cells derived from blood and nasal tissue of healthy volunteers ($n = 7$) or patients with CRSwNP ($n = 11$; Kruskal-Wallis test with Dunn multiple comparison test). * $P < .05$, ** $P < .01$, and *** $P < .001$.

the majority of IL-5/IL-13-coproducing T cells (59%; Fig 4, B). Notably, percentages of IFN- γ - and IL-17-producing cells were significantly lower in the IL-17RB⁺ population compared with those in the IL-17RB⁻ population. A similar trend was observed for TNF- α and IL-22.

The IL-33 receptor ST2 is also expressed by IL-17RB⁺ cells

T cells from nasal polyp explants were next examined for mRNA expression of the IL-33 receptor ST2. Expression of transmembrane and soluble isoforms (sST2) of ST2, as measured by using

quantitative RT-PCR, were increased in activated IL-17RB⁺ cells compared with IL-17RB⁻ cells (Fig 4, C), suggesting that IL-17RB⁺ T cells might also be IL-33 responsive.

IL-17RB and ST2 are functional and potentiate T_H2 cytokine production by nasal polyp T cells

T_H2 cytokine expression was determined by means of flow cytometry in polyp explants cultured in the presence of recombinant human IL-25 or IL-33 to evaluate whether IL-17RB and ST2 expressed on polyp T cells were functional (Fig 4, D). Recombinant cytokines were added either on the

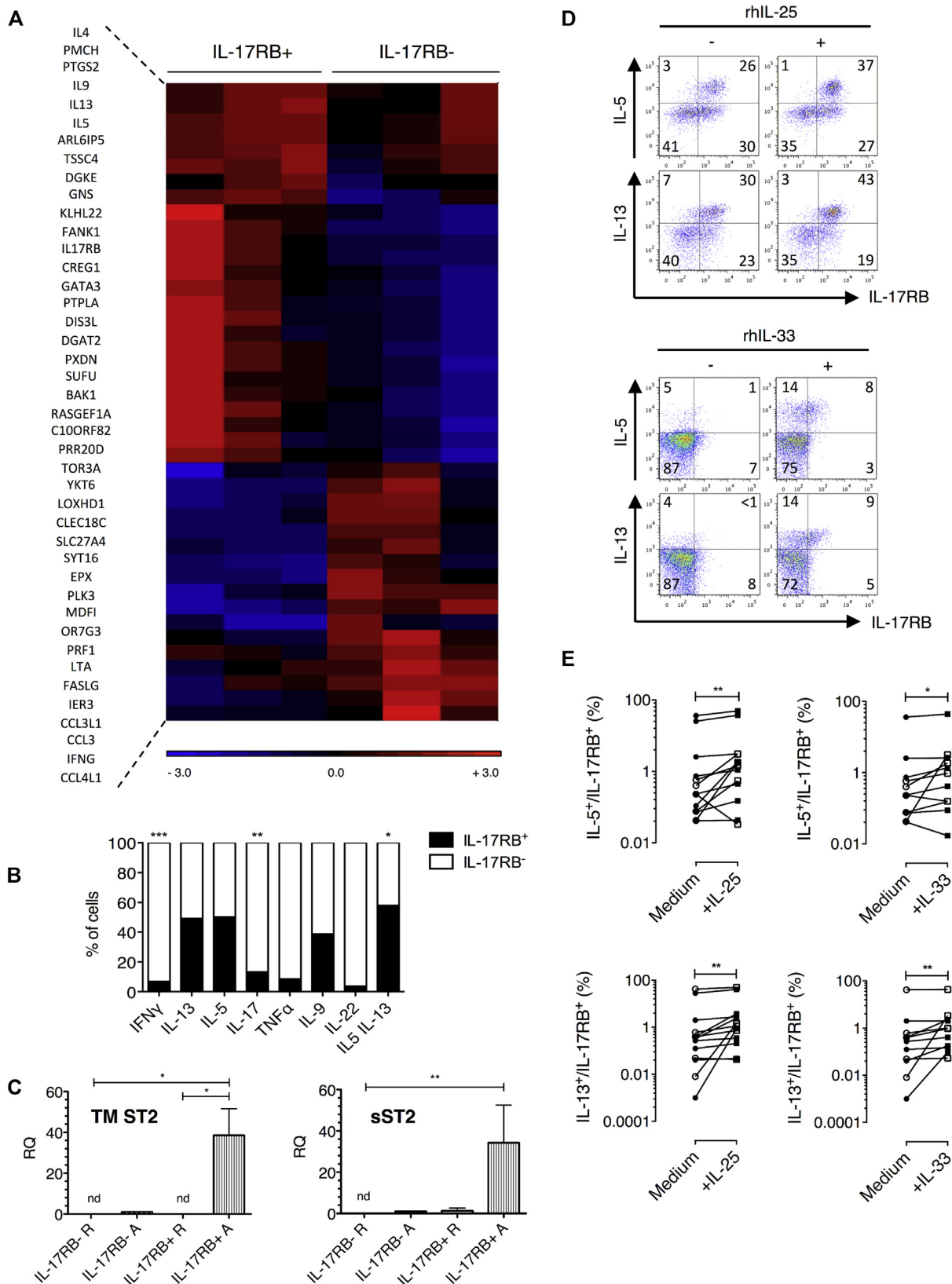


FIG 4. Polyp-derived CD4⁺IL-17RB⁺ cells have a T_H2 profile and respond to IL-25 and IL-33. **A**, Heat map of 42 differentially expressed genes in polyp IL-17RB⁺ versus IL-17RB⁻ cells (n = 3). **B**, Cytokine-producing cells coexpressing IL-17RB (n = 5-13). **C**, Transmembrane and soluble ST2 mRNA expression (n = 4; Mann-Whitney test). **D**, Representative staining for polyp CD4⁺ cells with or without IL-25/IL-33. **E**, IL-5⁺/IL-13⁺ cells coexpressing IL-17RB with or without IL-25/IL-33. Open symbols, Day 0 addition (n = 5); solid symbols, day 7 addition (n = 8). The Wilcoxon test was used. *P < .05, **P < .01, and ***P < .001.

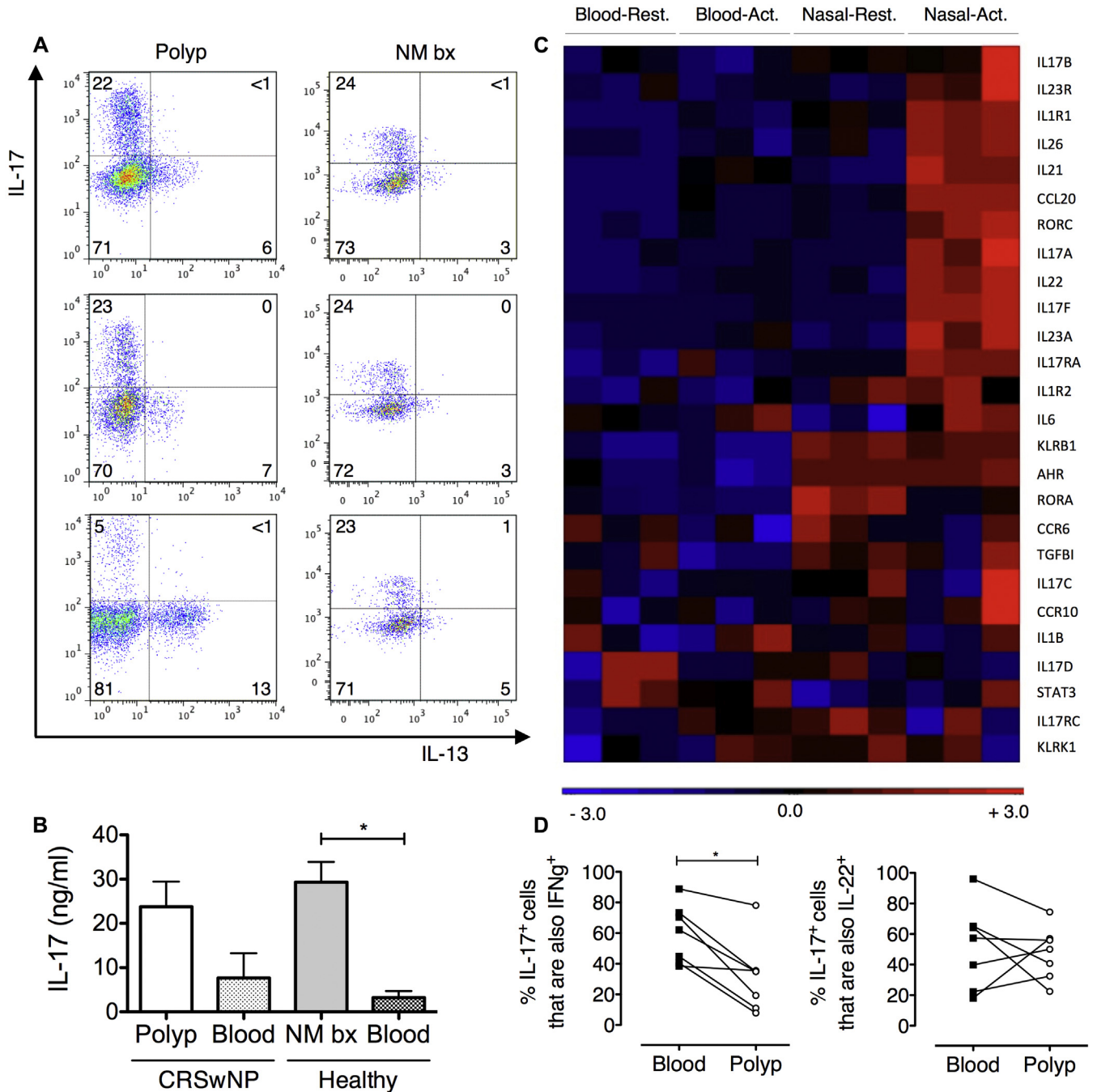


FIG 5. A T_H17 signature characterizes $CD4^+$ T cells of the healthy nasal mucosa. **A**, Representative IL-13/IL-17 staining in polyp and healthy nasal mucosa biopsy specimen (NM bx) $CD4^+$ cells ($n = 3$). **B**, IL-17 expression in explant culture supernatants ($n = 7$, mean + SEM; Mann-Whitney test). **C**, Heat map of T_H17 genes in NM bx versus blood $CD4^+$ cells ($n = 3$). **D**, IL-17 coexpression with IFN- γ /IL-22 in blood versus polyp $CD4^+$ cells ($n = 6$; Wilcoxon matched-pairs signed-rank test). * $P < .05$.

day of explantation or day 7 after stimulation. Analysis was performed 7 days later. Addition of IL-25 induced a mean 1.5-fold increase in the percentage of $IL-17RB^+IL-5^+CD4^+$ T cells and a 1.4-fold increase in the percentage of $IL-17RB^+IL-13^+CD4^+$ T cells in explant cultures (Fig 4, E). Addition of IL-33 had a comparable effect to IL-25, with a mean 1.4-fold increase in the percentage of $IL-17RB^+IL-$

5^+CD4^+ T cells and a 1.2-fold increase in the percentage of $IL-17RB^+IL-13^+CD4^+$ T cells. Time of recombinant cytokine addition had no effect on the response of $IL-17RB^+ST2^+$ cells. Addition of IL-25 to polyp-derived T cells at day 7 after stimulation was still associated with a significant increase in $IL-17RB^+IL-5^+$ and $IL-17RB^+IL-13^+$ $CD4^+$ T-cell counts (data not shown).

TABLE I. TCR V β repertoire analysis of IL-17RB^{+/-} cells

Patient ID Cell population	HKP020		HKP023		HKP026		HKP036	
	IL-17RB ⁺	IL-17RB ⁻	IL-17RB ⁺	IL-17RB ⁻	IL-17RB ⁺	IL-17RB ⁻	IL-17RB ⁺	IL-17RB ⁻
Total clones (productive)	4,871	1,146	969	3,801	1,896	443,183	2,435	47,486
Unique clones (no.)	33	91	28	97	55	6,475	113	1,759
Shared clones	0		1		25		11	
Common clones								
CASSLNTGYEQYF	+	-	+	+	+	-	-	-
CASSYPGEAFF	+	-	+	-	-	-	+	-

Numbers of unique TCR clones present in sorted polyp-derived CD4⁺IL-17RB⁺ and CD4⁺IL-17RB⁻ populations analyzed by using the immunoSEQ assay are shown (n = 4 separate donors). Amino acid sequences represent CDR3 regions of 2 common clones identified within the IL-17RB⁺ population of at least 3 of the 4 donors.

Nasal polyp epithelium and eosinophils express IL-25

Cellular sources of IL-25 within nasal polyp tissue were investigated by using immunohistochemistry. Immunostaining was observed in the epithelium of nasal polyps but not in healthy control biopsy tissue (see Fig E7, A, in this article's Online Repository at www.jacionline.org). Furthermore, a significantly higher number of IL-25⁺ cells were present in the polyp submucosa (see Fig E7, B). These cells were identified to be eosinophils based on cell morphology (see Fig E7, C). In contrast, immunoreactive IL-33 was detected in both nasal polyp and healthy biopsy tissue, with immunostaining indicating a predominantly epithelial and endothelial pattern of expression (see Fig E8 in this article's Online Repository at www.jacionline.org).

IL-17RB⁺ and IL-17RB⁻ cells have distinct T-cell receptor specificities with common T-cell receptor clones exhibited by IL-17RB⁺ cells

We next examined whether nasal IL-17RB⁺CD4⁺T_H2 cells in patients with CRSwNP represent oligoclonal populations driven by *in vivo* antigen or superantigen expansion. Clonality was examined by T-cell receptor variable β -chain (TCR V β) analysis with the immunoSEQ assay and compared in IL-17RB⁺CD4⁺ and IL-17RB⁻CD4⁺ cells sorted from nasal polyp explant cultures of 4 patients with CRSwNP. No skewing of TCR V β family use was observed (data not shown), but sequencing of complementarity-determining region 3 (CDR3) regions revealed that polyp IL-17RB⁺CD4⁺ cells contained a smaller number of unique clones compared with IL-17RB⁻CD4⁺ cells in all 4 cases analyzed (Table I). Additionally, less than 1% of sequenced clones were present within both IL-17RB⁺CD4⁺ and IL-17RB⁻CD4⁺ populations. Remarkably, 2 distinct common clones in IL-17RB⁺CD4⁺ T cells, identified to belong to the V β 5.2 and V β 6 families by using immunoSEQ analysis, were present in 3 of 4 patients with CRSwNP studied. Overall, these results suggest that polyp IL-17RB⁺CD4⁺ T cells have undergone clonal expansion and that common epitopes might drive this process, even in different patients.

T_H17 cells are the default T_H cell phenotype in normal nasal mucosal immunity

Given the abundant expression of IL-17 by CD4⁺ T cells derived from the healthy nasal mucosa in addition to nasal polyps, these cells were characterized further. In agreement with CCR6 and IL-17RB expression data (Fig 3), no coexpression

of IL-17 and IL-13 was detected (Fig 5, A). In supernatants of CD3/CD28-stimulated T cells, IL-17 was produced by T cells derived from both healthy nasal mucosa and polyp tissue but not peripheral blood-derived T cells from the same patients (Fig 5, B).

CD4⁺ T-cell populations were also sorted from paired nasal explant and peripheral blood cultures for transcriptome profiling (see Fig E9 in this article's Online Repository at www.jacionline.org). Preferential expression of T_H17-associated genes was observed in activated nasal CD4⁺ cells. Of note, the 5 genes that were most highly overexpressed in nasal versus peripheral blood CD4⁺ T cells were all T_H17 associated: *IL17F*, *IL22*, *CCL20*, *KLRB1* (CD161), and *IL1R1* (see Table E4 in this article's Online Repository at www.jacionline.org). Significant overexpression of the gene for the DNA-sensing inflammasome component absent in melanoma 2 (*AIM2*) was also observed in nasal mucosal T cells. Analysis of additional selected T_H17-associated genes further revealed preferential expression of *IL17A*, *IL21*, *IL23*, *IL23R*, aryl hydrocarbon receptor (*AHR*), and *RORC* (Fig 5, C) by activated nasal CD4⁺ cells. These data suggest that the healthy, homeostatic T-cell response in the nasal mucosa is associated with a strong T_H17 signature compared with the periphery.

T_H17 cells in nasal polyps have a potentially protective immune homeostatic role associated with reduced IFN- γ coexpression

T_H17 cells can coproduce IFN- γ and IL-22. IL-17/IFN- γ double-positive cells have been associated with a pathogenic proinflammatory phenotype, whereas IL-17/IL-22 double-positive cells have been reported to have protective properties by inducing expression of antimicrobial peptides.²⁸⁻³⁰ Lower coexpression of IFN- γ by IL-17⁺ T cells from polyp explants was found compared with that seen in blood-derived cells (Fig 5, D). No difference was observed in the percentages of IL-17⁺ cells coexpressing IL-22.

DISCUSSION

Recently, ILC2s have been identified in nasal polyps,^{18,19,31} and the presence of T_H2 cells in white patients with CRSwNP has been demonstrated.³² However, the local T-cell response itself remains relatively uncharacterized. Here, using a short-term explant model to expand and study T cells from surgical specimens, we report a significant population of IL-17RB-expressing T_H2 cells in nasal polyps with a gene expression profile akin to that of highly polarized T_H2 cells.^{25,26} Approximately 50% of

IL-5⁺IL-13⁺ polyp-derived CD4⁺ T cells expressed IL-17RB, suggesting IL-17RB⁺ cells represent a subset of T_{H2} cells.

We demonstrate that IL-17RB⁺CD4⁺ cells from polyps express mRNA for both transmembrane and soluble isoforms of ST2 on activation and respond to both IL-25 and IL-33 with augmented IL-5 and IL-13 production. ST2 expression by *in vitro* differentiated human peripheral blood T_{H2} cells has been described,³³ and both IL-25 and IL-33 receptors are expressed and functional on human and murine ILC2s.^{14,18,19,34} However, the role of these pathways in human mucosal T-cell responses has not been examined. These data now establish a direct link of IL-25, IL-33, and T_{H2} cells in human disease and suggest that IL-17RB⁺ST2⁺ T_{H2} cells likely contribute to CRSwNP pathogenesis through the IL-25/IL-33 axis. We found increased IL-25 immunostaining in polyps, localizing to eosinophils and epithelial cells, which is consistent with previously published reports¹¹⁻¹³ and in agreement with the increased IL-25 mRNA expression seen in patients with eosinophilic CRSwNP reported by Iinuma et al.³⁵ In addition, constitutive expression of IL-33 was detected in epithelium and endothelium of both healthy and polyp nasal tissue, which is in line with mRNA expression studies.^{31,36,37} These findings suggest that these cells might be endogenous sources of IL-25 and IL-33 in nasal polyps. However, the mechanism of IL-33 release is yet to be elucidated.

Colonization with *S aureus* in nasal polyposis is associated with high levels of IgE,³⁸ and *S aureus* superantigens, such as staphylococcal enterotoxin B, can drive the T_{H2}-type response in eosinophilic polyps.^{5,39} Here we demonstrate that nonrandom segregation of unique CDR3 clones occurs with 2 CDR3 clones present in the IL-17RB⁺ population in 3 of 4 samples analyzed. Although these results require confirmation in a larger study, they are suggestive of oligoclonality in the TCR V β repertoire within the IL-17RB⁺ polyp T-cell population and indicate possible expansion by common antigens in different patients. Routine skin prick testing in these patients with CRSwNP did not identify coincidental sensitization to a common aeroallergen (data not shown). Furthermore, the V β 5.2 and V β 6 families are reported to be preferentially expressed by cutaneous lymphocyte-associated antigen-positive cells responding to the superantigen staphylococcal enterotoxin A in patients with atopic dermatitis and induced by the toxic shock syndrome toxin 1 superantigen, respectively.^{40,41} Although speculative, this raises the possibility that local IL-17RB⁺ T_{H2} cells in patients with CRSwNP undergo antigen-specific expansion in response to common but as yet undefined epitopes with an additional non-antigen-specific component mediated by superantigens.

We demonstrate that the T_H response in the healthy nasal mucosa is heavily biased toward T_{H17} responses compared with the periphery. Although we did not examine the relative dominance of the T_{H17} phenotype compared with other T_H cell phenotypes, we observed that the 5 most overexpressed genes in normal nasal mucosal T cells compared with peripheral blood T cells were all strongly T_{H17} associated. We propose that a significant population of nasal T cells differentiate into T_{H17} cells *in vivo*, with the propensity to produce IL-17 and related cytokines should they become activated *in vivo*.⁴² We hypothesize that this T_{H17} phenotype represents a key part of the nasal mucosal host defense response. Priming of autologous monocytes with pathogens, such as *S aureus* and *Candida albicans*, induces

T_{H17} responses in naive human T cells,⁴³ suggesting that chronic exposure of the nasal mucosa to nonpathogenic and pathogenic microorganisms, such as *Staphylococcus epidermidis*, *S aureus*, and corynebacteria, could be the mechanism behind this response.

Within the T cells derived from healthy nasal tissue, we found that transcripts encoding IL-17F and IL-22 were the most highly upregulated. IL-17A and IL-17F are homologous molecules sharing 55% amino acid identity.⁴⁴ Both induce expression of numerous chemokines, cytokines, and adhesion molecules, although IL-17A is more effective at inducing inflammatory gene expression.^{28,45-47} IL-17F is expressed by a wide variety of tissue, including in the lung,^{47,48} and can also potentiate IL-22-induced expression of antimicrobial peptides.²⁸ Thus the presence of T cells able to produce IL-17F and IL-22 is suggestive of a function for these cells in nasal mucosal immune homeostasis. Microarray analysis also identified overexpression of AIM2 mRNA in nasal explant CD4⁺ T cells. The AIM2 inflammasome is activated by intracellular pathogens, leading to caspase-1-dependent IL-1 β secretion.^{49,50} Further studies will be needed to examine whether this innate pathway is functional in nasal T_{H17} cells.

Our study has some limitations. For example, memory T cells were phenotyped after short-term expansion. Therefore it is possible that a proportion of CD45RA⁺ peripheral blood T cells acquired CD45RO expression during culture and might have retained some of their baseline CD62 ligand and CCR7 expression characteristics. In addition, IL-17RB-expressing T cells were mainly characterized after *in vitro* expansion. Analysis of freshly isolated IL-17RB⁺ T cells from digested polyps was hampered by low cell numbers and lower IL-17RB expression, possibly reflecting the effects of enzymatic digestion, and therefore data were obtained from fewer cases. The IL-17RB mAb used in these studies did not prove suitable for immunohistochemical analysis, and further studies will be needed for *in vivo* expression analysis of IL-17RB. Finally, the effect of IL-25 and IL-33 stimulation on T_{H2} responses *in vitro* was modest, although the concentrations of recombinant IL-25 and IL-33 used in this study were similar to previously published reports.^{12,35}

Nonetheless, our data establish a biological link between IL-17RB expression and responsiveness to IL-25 in T_{H2} cells derived from polyps. Further optimized culture studies will be needed to characterize this response fully. Although 2 recent studies have reported the existence of IL-17RB⁺ cells in patients with CRSwNP,^{35,51} our findings represent the first direct colocalization of IL-17RB with T_{H2} cells.³⁵

In conclusion, we identify functional IL-17RB as a marker of local T_{H2} cells present in chronically inflamed nasal polyp tissue from patients with CRSwNP. Coexpression of ST2 by these cells, in addition to ILC2s, indicates that the IL-25/IL-17RB and IL-33/ST2 pathways could be attractive therapeutic targets. In addition, these data also provide novel insights into mechanisms of nasal immune homeostasis and suggest a role for T_{H17} cells in this process.

We thank Drs Mikila Jacobson and Cailong Fang for assistance with immunohistochemistry and the staff of the BRC Flow Core Facility and Genomics Facility at Guy's and St Thomas' NHS Trust for assistance with cell sorting and microarrays. We also thank Dr Paul Lavender for assistance with microarray studies and Professor Andrew Wardlaw for critical reading of the manuscript.

Key messages

- For the first time, we show that local IL-17RB⁺ T_H2 cells in nasal polyps coexpress ST2 and that both receptors function, in response to their respective ligands IL-25 and IL-33, to potentiate T_H2 cytokine production.
- IL-17RB⁺ T_H2 cells express common TCR clones, which is suggestive of recognition, clonal expansion, or both of T cells driven by a common antigen or antigens in patients with CRSwNP.
- T_H17 cells are present in the nasal mucosa as part of the normal homeostatic immune response.

REFERENCES

1. Fokkens WJ, Lund VJ, Mullol J, Bachert C, Alobid I, Baroody F, et al. European Position Paper on Rhinosinusitis and Nasal Polyps 2012. *Rhinol Suppl* 2012;23: 1-298, 3 p preceding table of contents.
2. Williamson PA, Vaidyanathan S, Clearie K, Barnes M, Lipworth BJ. Airway dysfunction in nasal polyposis: a spectrum of asthmatic disease? *Clin Exp Allergy* 2011;41:1379-85.
3. Van Zele T, Claeys S, Gevaert P, Van Maele G, Holtappels G, Van Cauwenberge P, et al. Differentiation of chronic sinus diseases by measurement of inflammatory mediators. *Allergy* 2006;61:1280-9.
4. Zhang N, Van Zele T, Perez-Novo C, Van Bruaene N, Holtappels G, DeRuyck N, et al. Different types of T-effector cells orchestrate mucosal inflammation in chronic sinus disease. *J Allergy Clin Immunol* 2008;122:961-8.
5. Bachert C, Zhang N, Patou J, van Zele T, Gevaert P. Role of staphylococcal superantigens in upper airway disease. *Curr Opin Allergy Clin Immunol* 2008; 8:34-8.
6. Peterson S, Poposki JA, Nagarkar DR, Chustz RT, Peters AT, Suh LA, et al. Increased expression of CC chemokine ligand 18 in patients with chronic rhinosinusitis with nasal polyps. *J Allergy Clin Immunol* 2012;129:119-27, e1-9.
7. Till S, Jopling L, Wachholz P, Robson R, Qin S, Andrew D, et al. T cell phenotypes of the normal nasal mucosa: induction of Th2 cytokines and CCR3 expression by IL-4. *J Immunol* 2001;166:2303-10.
8. Tamachi T, Maezawa Y, Ikeda K, Kagami S, Hatano M, Seto Y, et al. IL-25 enhances allergic airway inflammation by amplifying a TH2 cell-dependent pathway in mice. *J Allergy Clin Immunol* 2006;118:606-14.
9. Angkasekwinai P, Park H, Wang YH, Wang YH, Chang SH, Corry DB, et al. Interleukin 25 promotes the initiation of proallergic type 2 responses. *J Exp Med* 2007;204:1509-17.
10. Kurowska-Stolarska M, Kewin P, Murphy G, Russo RC, Stolarski B, Garcia CC, et al. IL-33 induces antigen-specific IL-5+ T cells and promotes allergic-induced airway inflammation independent of IL-4. *J Immunol* 2008;181:4780-90.
11. Wang YH, Angkasekwinai P, Lu N, Voo KS, Arima K, Hanabuchi S, et al. IL-25 augments type 2 immune responses by enhancing the expansion and functions of TSLP-DC-activated Th2 memory cells. *J Exp Med* 2007;204:1837-47.
12. Terrier B, Bieche I, Maisonobe T, Laurendeau I, Rosenzweig M, Kahn JE, et al. Interleukin-25: a cytokine linking eosinophils and adaptive immunity in Churg-Strauss syndrome. *Blood* 2010;116:4523-31.
13. Corrigan CJ, Wang W, Meng Q, Fang C, Eid G, Caballero MR, et al. Allergen-induced expression of IL-25 and IL-25 receptor in atopic asthmatic airways and late-phase cutaneous responses. *J Allergy Clin Immunol* 2011;128: 116-24.
14. Neill DR, Wong SH, Bellosi A, Flynn RJ, Daly M, Langford TK, et al. Nuocytes represent a new innate effector leukocyte that mediates type-2 immunity. *Nature* 2010;464:1367-70.
15. Salimi M, Barlow JL, Saunders SP, Xue L, Gutowska-Owsiak D, Wang X, et al. A role for IL-25 and IL-33-driven type-2 innate lymphoid cells in atopic dermatitis. *J Exp Med* 2013;210:2939-50.
16. Xu D, Chan WL, Leung BP, Huang Fp, Wheeler R, Piedrafita D, et al. Selective expression of a stable cell surface molecule on type 2 but not type 1 helper T cells. *J Exp Med* 1998;187:787-94.
17. Schmitz J, Owyang A, Oldham E, Song Y, Murphy E, McClanahan TK, et al. IL-33, an interleukin-1-like cytokine that signals via the IL-1 receptor-related protein ST2 and induces T helper type 2-associated cytokines. *Immunity* 2005; 23:479-90.
18. Mjosberg JM, Trifari S, Crellin NK, Peters CP, van Drunen CM, Piet B, et al. Human IL-25- and IL-33-responsive type 2 innate lymphoid cells are defined by expression of CRTH2 and CD161. *Nat Immunol* 2011;12:1055-62.
19. Shaw JL, Fakhri S, Citardi MJ, Porter PC, Corry DB, Kheradmand F, et al. IL-33-responsive innate lymphoid cells are an important source of IL-13 in chronic rhinosinusitis with nasal polyps. *Am J Respir Crit Care Med* 2013;188: 432-9.
20. Baba S, Kondo K, Kanaya K, Suzukawa K, Ushio M, Urata S, et al. Expression of IL-33 and its receptor ST2 in chronic rhinosinusitis with nasal polyps. *Laryngoscope* 2014;124:E115-22.
21. Reh DD, Wang Y, Ramanathan M Jr, Lane AP. Treatment-recalcitrant chronic rhinosinusitis with polyps is associated with altered epithelial cell expression of interleukin-33. *Am J Rhinol Allergy* 2010;24:105-9.
22. Chapman TJ, Topham DJ. Identification of a unique population of tissue-memory CD4+ T cells in the airways after influenza infection that is dependent on the integrin VLA-1. *J Immunol* 2010;184:3841-9.
23. Purwar R, Campbell J, Murphy G, Richards WG, Clark RA, Kupper TS. Resident memory T cells (T_{RM}) are abundant in human lung: diversity, function, and antigen specificity. *PLoS One* 2011;6:e16245.
24. Sallusto F, Lenig D, Forster R, Lipp M, Lanzavecchia A. Two subsets of memory T lymphocytes with distinct homing potentials and effector functions. *Nature* 1999;401:708-12.
25. Cousins DJ, Lee TH, Staynov DZ. Cytokine coexpression during human Th1/Th2 cell differentiation: direct evidence for coordinated expression of Th2 cytokines. *J Immunol* 2002;169:2498-506.
26. Sandig H, McDonald J, Gilmour J, Arno M, Lee TH, Cousins DJ. Human Th2 cells selectively express the orexigenic peptide, pro-melanin-concentrating hormone. *Proc Natl Acad Sci U S A* 2007;104:12440-4.
27. Tanaka K, Ogawa K, Sugamura K, Nakamura M, Takano S, Nagata K. Cutting edge: differential production of prostaglandin D2 by human helper T cell subsets. *J Immunol* 2000;164:2277-80.
28. Liang SC, Tan XY, Luxenberg DP, Karim R, Dunussi-Joannopoulos K, Collins M, et al. Interleukin (IL)-22 and IL-17 are coexpressed by Th17 cells and cooperatively enhance expression of antimicrobial peptides. *J Exp Med* 2006; 203:2271-9.
29. Bending D, De la Pena H, Veldhoen M, Phillips JM, Uyttenhove C, Stockinger B, et al. Highly purified Th17 cells from BDC2.5NOD mice convert into Th1-like cells in NOD/SCID recipient mice. *J Clin Invest* 2009;119:565-72.
30. Boniface K, Blumenschein WM, Brovont-Porth K, McGeachy MJ, Basham B, Desai B, et al. Human Th17 cells comprise heterogeneous subsets including IFN-gamma-producing cells with distinct properties from the Th1 lineage. *J Immunol* 2010;185:679-87.
31. Miljkovic D, Bassiouni A, Cooksley C, Ou J, Hauben E, Wormald PJ, et al. Association between group 2 innate lymphoid cells enrichment, nasal polyps and allergy in chronic rhinosinusitis. *Allergy* 2014;69:1154-61.
32. Derycke L, Eyerich S, Van Crombrugge G, Pérez-Novo C, Holtappels G, Deruyck N, et al. Mixed T helper cell signatures in chronic rhinosinusitis with and without polyps. *PLoS One* 2014;9:e97581.
33. Lecart S, Lecoite N, Subramaniam A, Alkan S, Ni D, Chen R, et al. Activated, but not resting human Th2 cells, in contrast to Th1 and T regulatory cells, produce soluble ST2 and express low levels of ST2L at the cell surface. *Eur J Immunol* 2002;32:2979-87.
34. Price AE, Liang HE, Sullivan BM, Reinhardt RL, Eislely CJ, Erle DJ, et al. Systemically dispersed innate IL-13-expressing cells in type 2 immunity. *Proc Natl Acad Sci U S A* 2010;107:11489-94.
35. Iinuma T, Okamoto Y, Yamamoto H, Inamine-Sasaki A, Ohki Y, Sakurai T, et al. Interleukin-25 and mucosal T cells in noneosinophilic and eosinophilic chronic rhinosinusitis. *Ann Allergy Asthma Immunol* 2015;114:289-98.
36. Kamekura R, Kojima T, Takano K, Go M, Sawada N, Himi T. The role of IL-33 and its receptor ST2 in human nasal epithelium with allergic rhinitis. *Clin Exp Allergy* 2012;42:218-28.
37. Moussion C, Ortega N, Girard JP. The IL-1-like cytokine IL-33 is constitutively expressed in the nucleus of endothelial cells and epithelial cells in vivo: a novel "alarmin"? *PLoS One* 2008;3:e3331.
38. Van Zele T, Gevaert P, Watelet JB, Claeys G, Holtappels G, Claeys C, et al. *Staphylococcus aureus* colonization and IgE antibody formation to enterotoxins is increased in nasal polyposis. *J Allergy Clin Immunol* 2004;114:981-3.
39. Patou J, Gevaert P, Van Zele T, Holtappels G, van Cauwenberge P, Bachert C. *Staphylococcus aureus* enterotoxin B, protein A, and lipoteichoic acid stimulations in nasal polyps. *J Allergy Clin Immunol* 2008;121:110-5.
40. Davison S, Allen M, Vaughan R, Barker J. Staphylococcal toxin-induced T cell proliferation in atopic eczema correlates with increased use of superantigen-reactive Vβ-chains in cutaneous lymphocyte-associated antigen (CLA)-positive lymphocytes. *Clin Exp Immunol* 2000;121:181-6.

41. Wang M, Shi P, Yue Z, Chen B, Zhang H, Zhang D, et al. Superantigens and the expression of T-cell receptor repertoire in chronic rhinosinusitis with nasal polyps. *Acta Otolaryngol* 2008;128:901-8.
42. Wan Q, Kozhaya L, ElHed A, Ramesh R, Carlson TJ, Djuretic IM, et al. Cytokine signals through PI-3 kinase pathway modulate Th17 cytokine production by CCR6+ human memory T cells. *J Exp Med* 2011;208:1875-87.
43. Zielinski CE, Mele F, Aschenbrenner D, Jarrossay D, Ronchi F, Gattorno M, et al. Pathogen-induced human TH17 cells produce IFN-gamma or IL-10 and are regulated by IL-1beta. *Nature* 2012;484:514-8.
44. Maggi L, Santarlasci V, Capone M, Peired A, Frosali F, Crome SQ, et al. CD161 is a marker of all human IL-17-producing T-cell subsets and is induced by RORC. *Eur J Immunol* 2010;40:2174-81.
45. Yang XO, Chang SH, Park H, Nurieva R, Shah B, Acero L, et al. Regulation of inflammatory responses by IL-17F. *J Exp Med* 2008;205:1063-75.
46. Ishigame H, Kakuta S, Nagai T, Kadoki M, Nambu A, Komiyama Y, et al. Differential roles of interleukin-17A and -17F in host defense against mucoc epithelial bacterial infection and allergic responses. *Immunity* 2009;30:108-19.
47. Kawaguchi M, Kokubu F, Fujita J, Huang SK, Hizawa N. Role of interleukin-17F in asthma. *Inflamm Allergy Drug Targets* 2009;8:383-9.
48. Starnes T, Robertson MJ, Sledge G, Kelich S, Nakshatri H, Broxmeyer HE, et al. Cutting edge: IL-17F, a novel cytokine selectively expressed in activated T cells and monocytes, regulates angiogenesis and endothelial cell cytokine production. *J Immunol* 2001;167:4137-40.
49. Fernandes-Alnemri T, Yu JW, Datta P, Wu J, Alnemri ES. AIM2 activates the inflammasome and cell death in response to cytoplasmic DNA. *Nature* 2009;458:509-13.
50. Rathinam VA, Jiang Z, Waggoner SN, Sharma S, Cole LE, Waggoner L, et al. The AIM2 inflammasome is essential for host defense against cytosolic bacteria and DNA viruses. *Nat Immunol* 2010;11:395-402.
51. Shin HW, Kim DK, Park MH, Eun KM, Lee M, So D, et al. IL-25 as a novel therapeutic target in nasal polyps of patients with chronic rhinosinusitis. *J Allergy Clin Immunol* 2015;135:1476-85.e7.