

CORRECTION

# Correction: A Role for Na<sup>+</sup>,K<sup>+</sup>-ATPase $\alpha$ 1 in Regulating Rab27a Localisation on Melanosomes

Antonia E. G. Booth, Abul K. Tarafder, Alistair N. Hume, Chiara Recchi, Miguel C. Seabra

[Fig 7](#), “Rab38 localisation to melanosomes is unaffected following ATP1a1 depletion,” is an inadvertent duplication of panel A in Figure 6. Please view [Fig 7](#) here.

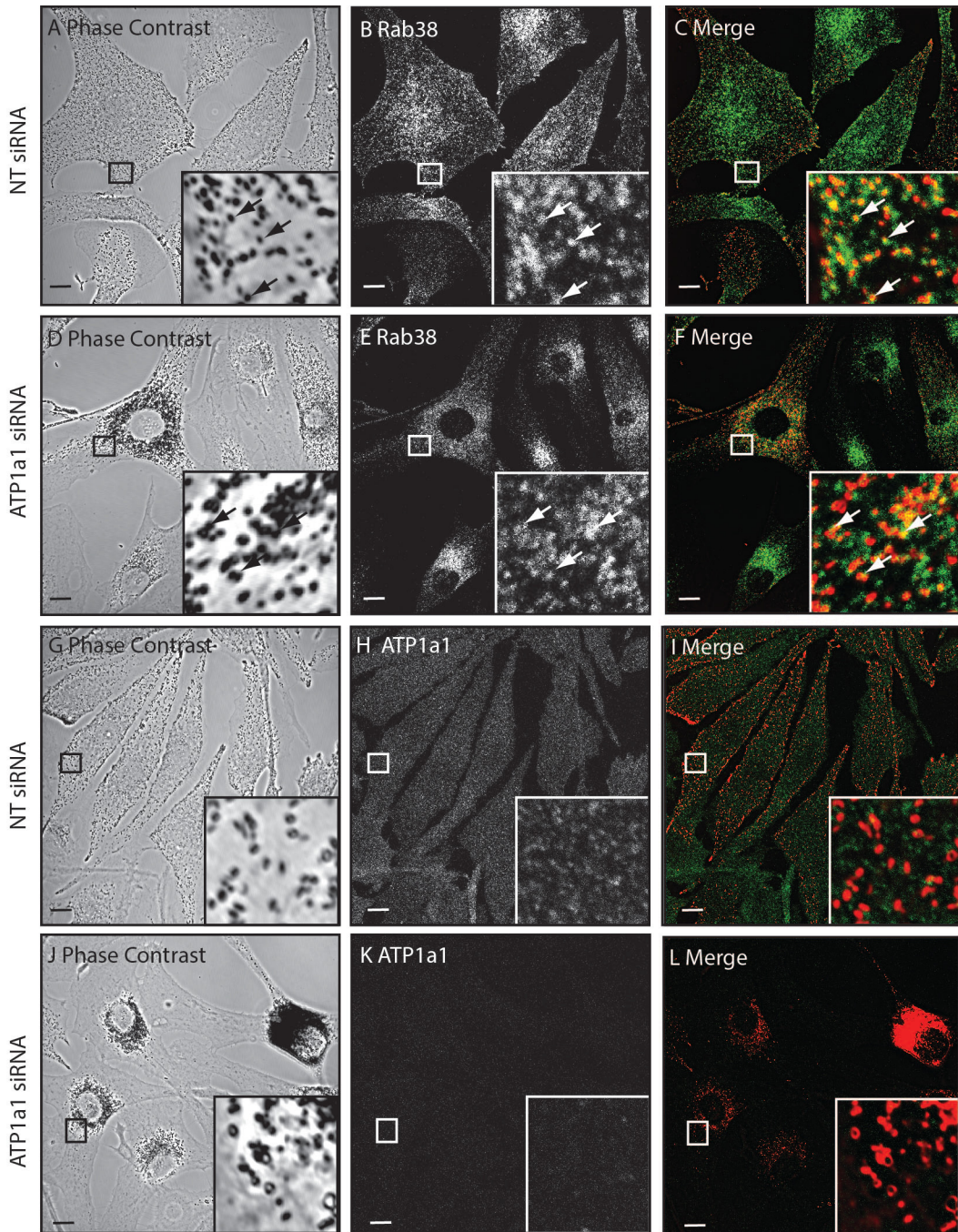


## OPEN ACCESS

**Citation:** Booth AEG, Tarafder AK, Hume AN, Recchi C, Seabra MC (2016) Correction: A Role for Na<sup>+</sup>, K<sup>+</sup>-ATPase  $\alpha$ 1 in Regulating Rab27a Localisation on Melanosomes. PLoS ONE 11(2): e0148719. doi:10.1371/journal.pone.0148719

**Published:** February 3, 2016

**Copyright:** © 2016 Booth et al. This is an open access article distributed under the terms of the [Creative Commons Attribution License](#), which permits unrestricted use, distribution, and reproduction in any medium, provided the original author and source are credited.



**Fig 7. Rab38 localisation to melanosomes is unaffected following ATP1a1 depletion.** Melan-INK4a cells were treated with either NT or ATP1a1 siRNA and cultured for 72 h. Cells were fixed with PFA, permeabilised and immunolabelled with antibodies to Rab38 or ATP1a1. Phase contrast panels show melanosome distribution (A, D, G, J), immunostaining is shown for Rab38 (B and E) and ATP1a1 (H and K). In the merge panels (C, F, I, L) the pigment is inverted and pseudo-coloured red to aid co-localisation with the green immunofluorescence signals. Insets are a higher magnification of the boxed area. Arrows indicate co-localisation between pigment and Rab38 (C and F). Scale bar represents 10  $\mu$ m.

doi:10.1371/journal.pone.0148719.g001

## Reference

1. Booth AEG, Tarafder AK, Hume AN, Recchi C, Seabra MC (2014) A Role for Na<sup>+</sup>,K<sup>+</sup>-ATPase  $\alpha$ 1 in Regulating Rab27a Localisation on Melanosomes. PLoS ONE 9(7): e102851. doi:[10.1371/journal.pone.0102851](https://doi.org/10.1371/journal.pone.0102851) PMID: [25051489](https://pubmed.ncbi.nlm.nih.gov/25051489/)