



University of Dundee

Global impact of bronchiectasis and cystic fibrosis

Redondo, Margarida; Keyt, Holly; Dhar, Raja; Chalmers, James D.

Published in:
Breathe

DOI:
[10.1183/20734735.007516](https://doi.org/10.1183/20734735.007516)

Publication date:
2016

Document Version
Publisher's PDF, also known as Version of record

[Link to publication in Discovery Research Portal](#)

Citation for published version (APA):

Redondo, M., Keyt, H., Dhar, R., & Chalmers, J. D. (2016). Global impact of bronchiectasis and cystic fibrosis. *Breathe*, 12(3), 222-235. DOI: 10.1183/20734735.007516

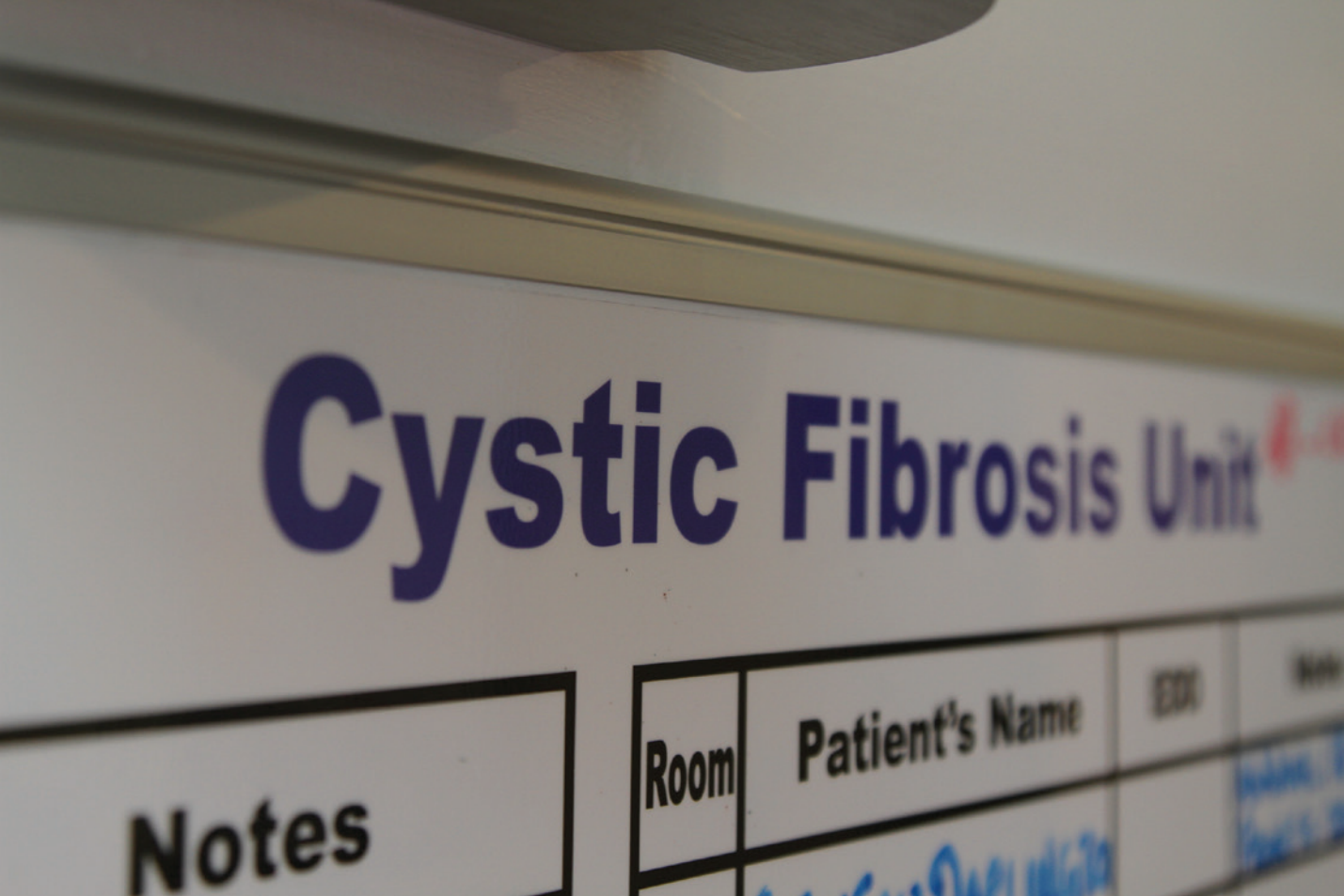
General rights

Copyright and moral rights for the publications made accessible in Discovery Research Portal are retained by the authors and/or other copyright owners and it is a condition of accessing publications that users recognise and abide by the legal requirements associated with these rights.

- Users may download and print one copy of any publication from Discovery Research Portal for the purpose of private study or research.
- You may not further distribute the material or use it for any profit-making activity or commercial gain.
- You may freely distribute the URL identifying the publication in the public portal.

Take down policy

If you believe that this document breaches copyright please contact us providing details, and we will remove access to the work immediately and investigate your claim.



Credit: Sheffield Teaching Hospitals NHS Foundation Trust

Educational aims

- To recognise the clinical and radiological presentation of the spectrum of diseases associated with bronchiectasis.
- To understand variation in the aetiology, microbiology and burden of bronchiectasis and cystic fibrosis across different global healthcare systems.



Margarida Redondo¹, Holly Keyt², Raja Dhar³, James D. Chalmers⁴



¹Pulmonology Dept, Centro Hospitalar de Sao Joao, Porto, Portugal.

²University of Texas Health Science Center at San Antonio, San Antonio, TX, USA.

³Fortis Hospital, Kolkata, West Bengal, India.

⁴Scottish Centre for Respiratory Research, University of Dundee, Ninewells Hospital and Medical School, Dundee, UK.



jchalmers@dundee.ac.uk



@EMBARCnetwork



www.linkedin.com/company/embarc-the-european-bronchiectasis-register

Global impact of bronchiectasis and cystic fibrosis

Bronchiectasis is the term used to refer to dilatation of the bronchi that is usually permanent and is associated with a clinical syndrome of cough, sputum production and recurrent respiratory infections. It can be caused by a range of inherited and acquired disorders, or may be idiopathic in nature. The most well recognised inherited disorder in Western countries is cystic fibrosis (CF), an autosomal recessive condition that leads to progressive bronchiectasis, bacterial infection and premature mortality. Both bronchiectasis due to CF and bronchiectasis due to other conditions are placing an increasing burden on healthcare systems internationally. Treatments for CF are becoming more effective leading to more adult patients with complex healthcare needs. Bronchiectasis not due to CF is becoming increasingly recognised, particularly in the elderly population. Recognition is important and can lead to identification of the underlying cause, appropriate treatment and improved quality of life. The disease is highly diverse in its presentation, requiring all respiratory physicians to have knowledge of the different “bronchiectasis syndromes”. The most common aetiologies and presenting syndromes vary depending on geography, with nontuberculous mycobacterial disease predominating in some parts of North America, post-infectious and idiopathic disease predominating in Western Europe, and post-tuberculosis bronchiectasis dominating in South Asia and Eastern Europe.

Ongoing global collaborative studies will greatly advance our understanding of the international impact of bronchiectasis and CF.

Cite as: Redondo M, Keyt H, Dhar R, *et al.* Global impact of bronchiectasis and cystic fibrosis. *Breathe* 2016; 12: 222–235.



@ERSpublications

Bronchiectasis and CF: disabling diseases with a growing impact worldwide

<http://ow.ly/U0S0302ocv3>

What is bronchiectasis?

Bronchiectasis is an anatomical description, referring to abnormal widening of the bronchi which may be caused by a wide range of inherited and acquired disorders [1–3].

Radiologically, bronchiectasis is most easily identified by computed tomography (CT) [3]. At any level, the diameter of the bronchi should be less than the adjacent blood vessel (known as the bronchoarterial ratio) [4]. An increase in the diameter of the bronchus, and a failure of the

bronchus to taper normally as it goes out towards the periphery of the lung, is diagnostic of bronchiectasis. Other radiological features that may accompany bronchiectasis include bronchial wall thickening, mucus plugging, tree-in-bud abnormalities, air trapping, mosaicism and emphysema [4, 5]. None of these features are required for diagnosis.

Bronchial dilatation is cylindrical when mild, varicose when more severe and cystic when most severe (figure 1) [4–6].

When the term of bronchiectasis is used to refer to a disease rather than a radiological appearance,



© ERS 2016

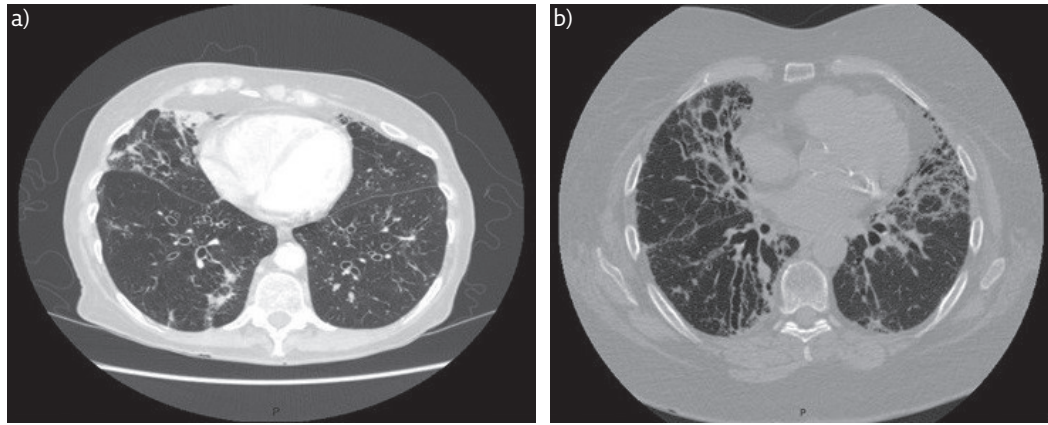


Figure 1 Radiological heterogeneity of bronchiectasis. Two patients are shown: a) a patient with moderate idiopathic bronchiectasis demonstrating predominantly cylindrical dilatation, and b) a patient with severe disease and *Pseudomonas aeruginosa* colonisation demonstrating widespread varicose and cystic bronchial dilatation.

it describes a clinical syndrome of cough, sputum production and recurrent respiratory tract infections [1, 2, 7]. Dilatation of the bronchi leads to failure of normal mucociliary clearance, which may be exacerbated by abnormally thick mucus such as in cystic fibrosis (CF) [8–10]. The airways become colonised with bacteria, which promotes recruitment of neutrophils and other inflammatory cells that further damage the airway through complex mechanisms that include the release of cytokines/chemokines, proteases and antimicrobial peptides that combine to promote mucus hypersecretion, failure of bacterial killing, airway remodelling and failure of ciliary function [10–14]. This establishes “the vicious cycle of bronchiectasis”, which has been well described [13]. Whether failure of mucociliary clearance, inflammation or infection occurs first to initiate the cycle is unclear, and it is likely the initiating event is different depending on the underlying cause of bronchiectasis [14–16].

What causes bronchiectasis?

The majority of cases of bronchiectasis are not due to CF, so-called non-CF bronchiectasis [17]. Bronchiectasis therefore represents a final common pathway of a large number of disorders [15–19].

Post-infectious bronchiectasis occurs when bronchiectasis develops in adults or children following a severe infection [19]. This may arise following pneumonia, and is described frequently following infection with *Mycobacterium tuberculosis*. Nontuberculous mycobacteria (NTM), such as *M. avium* and *M. abscessus*, are strongly associated with bronchiectasis and CF, although in the case of non-CF bronchiectasis is not always clear whether NTM is cause or a complication of bronchiectasis [20, 21]. Viral infections are also described as a cause of bronchiectasis [22]. Bronchiectasis is an important complication of primary immunodeficiencies such as common

variable immunodeficiency, where it is presumed that recurrent infections lead to progressive lung damage [23]. It is important to be aware that, although typically presenting in children, immunodeficiencies may be first diagnosed in adulthood.

A large number of connective tissue diseases (CTDs) have been associated with bronchiectasis [24, 25]. The association between rheumatoid arthritis and bronchiectasis is well described, with 2–10% of rheumatoid arthritis patients being affected. Sjögren’s syndrome, systemic lupus erythematosus, ankylosing spondylitis, scleroderma and vasculitis have all been reported to have a higher incidence of bronchiectasis than that expected in the general population [24]. In many cases associated with CTD, the patient may be entirely asymptomatic. The significance of abnormal bronchial dilatation in the absence of symptoms in patients with CTD is unclear.

Inflammatory bowel diseases (IBD), both ulcerative colitis and Crohn’s disease are associated with bronchiectasis [26]. Airway involvement in IBD is thought to be rare (reported at ~0.2% in an IBD clinic) and progresses through chronic bronchitis, without radiological bronchiectasis, through inflammatory bronchorrhea (which can be very large volume, *e.g.* >100 mL·day⁻¹) to classical bronchiectasis [26].

Allergic bronchopulmonary aspergillosis (ABPA) is an important cause of bronchiectasis to identify, because it has a specific treatment that can improve symptoms and prevent the development of severe bronchiectasis [27, 28]. Patients typically have a history of asthma (or CF) and present with cough and sputum (often with thick plugs and large volumes) with deteriorating symptoms of asthma including wheeze and exacerbations. Patients may have fleeting infiltrates on chest radiography with segmental, lobar or lung collapse. The bronchiectasis is typically proximal, but this is not universal [1]. Diagnosis depends on demonstrating a specific hypersensitivity response

to *Aspergillus fumigatus* (or occasionally other fungi) on laboratory testing.

Inhaled foreign bodies, lung tumours and other obstructive lesions can cause localised bronchiectasis, and consequently bronchoscopy is advised where bronchiectasis affects a single lobe [1].

There are a number of congenital or inherited causes of bronchiectasis, most of which are rare.

CF is an autosomal recessive condition affecting 1–10 per 100000 people across Europe. One in 25 Caucasians are carriers of mutations known to cause CF [29]. The carrier frequency in other ethnic groups is lower and consequently the prevalence of the disease is lower. It is a multi-system disorder resulting from mutations in the cystic fibrosis transmembrane conductance regulator (CFTR) [30]. The majority of cases are now detected through newborn screening in Western countries, although diagnosis in adulthood in cases initially thought to be “non-CF” bronchiectasis is not uncommon [1, 30]. CF should be excluded in all children presenting with bronchiectasis and in adults presenting under the age of 40 years, in those with upper lobe bronchiectasis (figure 2), in those with extrapulmonary manifestations (malabsorption, pancreatitis or intestinal obstruction), and in those with *Staphylococcus aureus*, *Pseudomonas aeruginosa* or NTM [1, 2, 9].

CF has a special importance, because of the huge morbidity associated with the disease, which despite great advances in its treatment still has a life expectancy of only 40–50 years [31]. When it was first recognised as a distinct disease in 1938, patients with CF were expected to live only for a matter of months [32]. As antibiotic therapy and pancreatic enzyme replacement were developed in the mid-20th century, life expectancy and quality of life improved; however, these patients continued to die in adolescence or early adulthood. The past three decades of international

translational research and refinement in the practice of caring for patients with CF, however, has resulted in further advances in nutritional therapy, targeted inhaled anti-pseudomonal agents and airway clearance, and most recently CFTR modulators that open the possibility of correcting the basic pathophysiological mechanism of CF [33]. The cumulative effect of such research and development is that many patients with CF can now expect to take on the tasks of everyday adult life such as finishing school, joining the workforce and starting families. CF is now a model of how specialist care, translational research and interaction between healthcare providers, pharmaceutical industry and charities can drive improvements in life expectancy and quality of life for patients [8, 29–33].

Primary ciliary dyskinesia (PCD) is also an autosomal recessive disease [34]. The prevalence of the disease is unknown and likely to be greatly underestimated due to the absence of widely available screening tests. The disease may be diagnosed in childhood, or may be identified in late adulthood, with of cases reported beyond the sixth decade of life [35, 36]. The classical presentation of PCD includes childhood onset of respiratory symptoms, recurrent otitis media and sinusitis. Approximately half of patients with this classic presentation will have dextrocardia [35]. Other forms of congenital abnormalities may be present such as complex congenital heart disease, oesophageal atresia, biliary atresia or hydrocephalus. Infertility may be present. Young’s syndrome is a rare subset of PCD defining the combination of bronchiectasis, rhinosinusitis and reduced fertility (azoospermia).

α_1 -antitrypsin deficiency (AATD) lung disease is typically characterised by airflow obstruction, but a significant number of patients have bronchiectasis [37, 38]. ~40% of patients have chronic bronchitis and sputum production [37]. In one series from the UK of 74 subjects with PiZ AATD, 20 had radiological and clinically significant bronchiectasis [38]. Since bronchiectasis is typically not the only feature of AATD, screening for AATD in unselected patients with bronchiectasis has limited value [39]. Nevertheless, AATD should be suspected in patients presenting at a young age with prominent emphysema and airflow obstruction, particularly in the presence of basal emphysema on CT [1].

Myeloma and haematological malignancy are rarely described in association with bronchiectasis, but there is a perception that this group of patients are becoming more prevalent. McSHANE *et al.* [40] studied 16 patients with haematological malignancy in a US series. Cases associated with bronchiectasis included acute lymphocytic leukaemia, chronic lymphocytic leukaemia, acute monocyte leukaemia, chronic monocytic leukaemia, non-Hodgkin lymphoma and Waldenstrom’s macroglobulinaemia. Graft *versus* host disease following stem cell transplantation is a recognised cause of bronchiectasis, but in this series nearly half



Figure 2 High-resolution CT scanning in a 27 year old patient with homozygous $\Delta F508$ CF. Bilateral upper lobe bronchiectasis is evident, with mosaicism. The scan also showed extensive emphysema.

of patients had not received stem cell transplantation and so it is likely defective immune function directly related to the haematological malignancy contributes to the development of bronchiectasis [40, 41]. All patients with bronchiectasis should be screened with a full blood count and measurement of serum immunoglobulins, which may detect primary and secondary immunodeficiency. Serum electrophoresis and Bence Jones protein in urine are used to screen for myeloma [1].

Gastro-oesophageal reflux disease (GORD) and aspiration are reported to be causes of bronchiectasis, although this association has been poorly studied and it is difficult to ascertain to what extent GORD is a genuine aetiology because it is so prevalent in the general population. Some data suggests GORD may be a disease modifier more than an aetiology [42, 43].

HIV infection may predispose to bronchiectasis through susceptibility to recurrent infections [44]. There is also a strong link between HIV infection and tuberculosis (TB) or NTM infection, both of which are strongly linked to bronchiectasis [44, 45]. In the era of highly active anti-retroviral therapy, opportunistic infections are less common but the impact of HIV on the immune response is also highly relevant. HIV patients have a higher prevalence of smoking than the general population and are more vulnerable to smoking-related lung damage and the development of chronic obstructive pulmonary disease (COPD) [45]. Therefore, in addition to being more susceptible to a number of disorders associated with bronchiectasis, even in the absence of these, patients with HIV appear to have a higher incidence of bronchiectasis than expected in the general population [46].

Yellow nail syndrome is a very rare orphan disease characterised by the triad of yellow nails, chronic respiratory disease and primary lymphedema (often presenting as pleural effusion). Males and females are equally affected and patients will usually develop symptoms in late childhood/early adulthood, although diagnosis may be delayed until very late in life. The triad is not always present, as nail changes can occur without respiratory involvement, and similarly lymphedema may be absent [47].

Mounier-Kuhn syndrome (also known as tracheobronchomegaly) is a congenital disorder

characterised by marked dilation of the trachea and proximal bronchiectasis. It is more frequent in men and often presents in early adulthood with typical symptoms of bronchiectasis, including recurrent infections, cough and sputum production. It occurs due to atrophy of the elastic fibres of the trachea and main bronchi leading to tracheobronchial flaccidity, dilatation and collapse. It is likely to have a genetic basis but a causative gene has yet to be identified (figure 3) [48].

Radiological bronchiectasis without symptoms should be differentiated from clinically significant bronchiectasis. Some studies report a very high rate of bronchiectasis in healthy nonsmokers. For example, WINTER *et al.* [49] conducted CT scans in 47 healthy persons older than 65 years and 24 persons aged 30–50 years, and reported bronchiectasis in 14.9% of those aged >65 years. In the oldest patients aged <75 years, 19.1% had bronchiectasis. MATSUOKA *et al.* [4] performed high-resolution CT in 85 patients without known respiratory disease and reported the presence of bronchiectasis (defined as a bronchoarterial ratio >1) in 41% of subjects older than 65 years. Since none of these patients had symptoms, this suggests a very high frequency of asymptomatic mild bronchial dilatation in the elderly [4]. Bronchoarterial ratio increased with age and smoking also appeared to increase the ratio in the elderly population [4].

This list of causes is not exhaustive, but outlines both the most frequent causes of bronchiectasis in children and adults while also emphasising the highly variable clinical presentation of these diseases (table 1). Despite extensive clinical, radiological and immunological characterisation, as recommended by consensus guidelines, 30–70% of patients are classified as idiopathic bronchiectasis following testing [2–5].

What are the links with “traditional” airway diseases (COPD and asthma)?

There is overlap between COPD and asthma (sometimes referred to as asthma–COPD overlap syndrome (ACOS)) and there is clearly also overlap between bronchiectasis and COPD (sometimes called bronchiectasis–COPD overlap syndrome (BCOS)) [50–52]. A large proportion of patients with bronchiectasis will be initially diagnosed with COPD or asthma. In the recent series described by QUINT *et al.* [53], using a large primary care database in the UK to study the prevalence of bronchiectasis, 42.5% of patients with bronchiectasis had a coexisting diagnosis of asthma and 36.1% had a coexisting diagnosis of COPD. Whether this represents genuine co-diagnosis, or whether there is a degree of misdiagnosis is unclear. There is clear overlap between these three disorders (figure 4); therefore, a patient presenting to primary care with

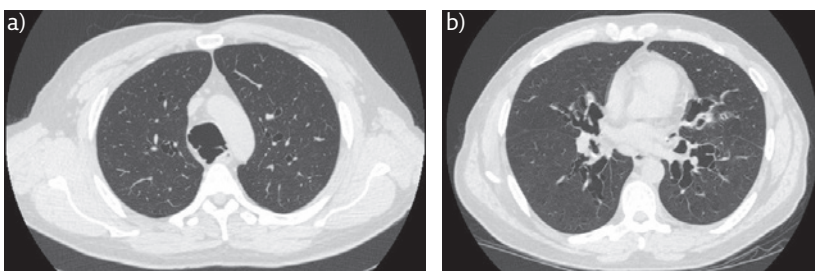


Figure 3 Two images from the same individual with tracheobronchomegaly showing a) gross tracheal dilatation and b) severe central bronchiectasis.

Table 1 Selected causes of bronchiectasis with their reported prevalence

Aetiology of bronchiectasis	Proportion of adult patients affected	Typical clinical features
Idiopathic	20–60%	Variable presentation
Post-infective	20–40%	History of severe infection in the affected lobe(s) or historical infection [#]
Post-TB	<2% in developed countries Dominant cause in Eastern Europe, Asia and possibly other regions	History of TB with cavitation and lung damage
ABPA	1–10%	History of asthma, sputum plugs, wheezing, response to corticosteroids and demonstration of specific allergy to <i>Aspergillus</i> Central bronchiectasis
CTD	1–10%	Evidence of systemic CTD (most frequently rheumatoid arthritis)
Immunodeficiency	<5%	May be evidence of nonpulmonary infections or unusual microorganisms
CF	<1% in “non-CF” adult clinics	Upper lobe bronchiectasis, extrapulmonary features, male infertility, malabsorption Isolation of <i>P. aeruginosa</i> , <i>S. aureus</i> or NTM
PCD	<2% but may be underestimated due to limited testing	Middle or lower lobe disease, history of otitis media and rhinosinusitis, early age of onset
Yellow nail syndrome	<1%	Yellow nails, pleural effusion
Tracheobronchomegaly	<1%	Characteristic radiological appearance of tracheal dilatation and central bronchiectasis
NTM infection	2–50%	Middle lobe nodular bronchiectatic disease More common in females May be scoliosis, pectus excavatum and low BMI
HIV infection	<1%	No characteristic phenotype
Haematological malignancy	<1%	Frequent respiratory tract infections
AATD	<1%	Paraseptal emphysema, airflow obstruction
Inhaled foreign body	<1%	Single lobe disease
COPD[¶]	2–60%	Mild bilateral lower lobe disease with emphysema and history of cigarette smoking
Asthma[¶]	1–50%	Not well described
Gastro-oesophageal reflux or aspiration[¶]	N/A	Bilateral lower lobe or isolated right lower lobe bronchiectasis Not clearly identified as an aetiology

BMI: body mass index; N/A: not available. #: reverse causation and recall bias make these estimates unreliable; ¶: whether these are true causes of bronchiectasis is debated. Prevalence rate data were extracted from [1, 12, 15–19].

cough, sputum production and airflow obstruction on spirometry is likely to be initially diagnosed with COPD, particularly if they have a smoking history [54]. Triggers for further investigation may be a failure to respond to standard treatment, frequent exacerbations, large volume sputum production, isolation of Gram-negative organisms in sputum, or severity of COPD that seems out of proportion to the reported smoking history [55]. The same applies to asthma where a high prevalence of bronchiectasis is likely to represent both a degree of misdiagnosis and coexistence of the two

conditions at the same time as well as potentially chronic inflammation in asthma leading to the development of bronchiectasis [56, 57].

The prevalence of bronchiectasis in COPD patients is highly variable in the literature. The largest series such as the ECLIPSE cohort (n=2164) report a frequency of 5% in Global Initiative for Chronic Obstructive Lung Disease (GOLD) stage III and 7% in GOLD stage IV disease [58]. However, how bronchiectasis was radiologically defined in this cohort is not clear [58]. Another large cohort, COPDgene (n=3636), has reported a prevalence

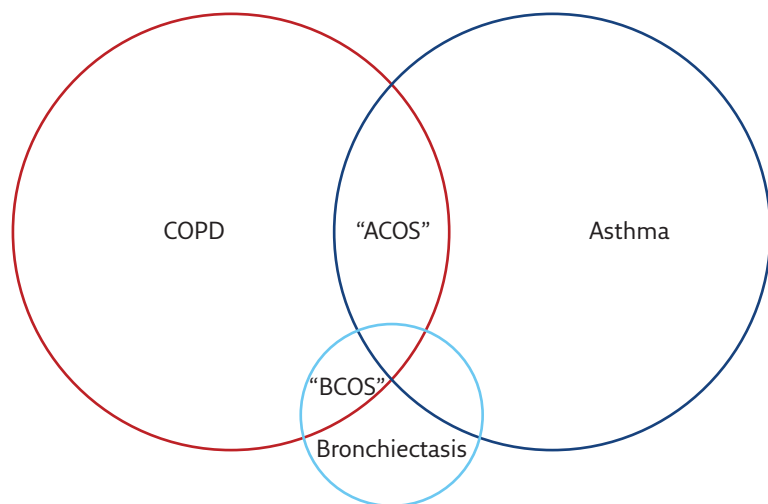


Figure 4 Venn diagram illustrating the overlap between COPD, asthma and bronchiectasis.

of 20.8% in COPD patients, with an association between radiological bronchiectasis and exacerbations and worse forced expiratory volume in 1 s (FEV₁) [59]. While this may imply a high frequency of bronchiectasis, when put into the context of the study by MATSUOKA *et al.* [4] (discussed earlier) suggesting 41% of asymptomatic healthy adults aged >65 years have radiological bronchiectasis, it cannot be said for certain whether COPD patients have a greater frequency of bronchiectasis than the general population [4].

Nevertheless, there is a consistent trend across multiple studies for bronchiectasis to be more frequent as airflow obstruction becomes more severe [60]. It has also been suggested that COPD and bronchiectasis together are associated with greater rates of bacterial colonisation and even death, although this is not a consistent finding and a recent meta-analysis pointed to some publication bias (where smaller studies with large effects were being preferentially published) [60]. Looking at this association from a bronchiectasis perspective, rather than from the point of view of COPD, where a bronchiectasis patient has airflow obstruction or a clinical diagnosis of COPD, there is a significantly increased risk of death demonstrated across multiple studies [61–63].

There are less data available regarding asthma. PAGANIN *et al.* [57] performed high-resolution CT scanning on 70 patients with allergic and 56 patients with non-allergic asthma. They demonstrated cylindrical bronchiectasis in up to 80% of patients with severe non-allergic asthma and nearly 50% of patients with severe allergic asthma [57]. In patients with mild disease, the corresponding rates were ~50 and ~20%, respectively. The authors concluded that bronchiectasis is common and related to the severity of asthma. Recently, asthma has been proposed as a contributor to exacerbations of bronchiectasis [56]. Again, because asthma is common in the general population, it is difficult to determine to what

extent asthma is a cause rather than a coexisting condition. Applying the Bradford-Hill concepts for causality, there remains much work to be done in this area (table 2).

The association between asthma and CF bronchiectasis is similarly unclear, as the overlap in symptomatology and variable airflow obstruction makes diagnosis challenging. Further obfuscating the diagnosis is the recognition of bronchial hyper-responsiveness in CF cohorts and bronchiectasis cohorts [64, 65]. Despite this, many patients with CF and bronchiectasis are treated with inhaled corticosteroids and other typical asthma therapies without well-established evidence of benefit [66]. Further research is needed to establish best practices of care for these patients.

What is the clinical presentation of bronchiectasis?

Bronchiectasis has a highly variable clinical presentation, as it is a disorder that can affect any age from young children to the very elderly, males and females, and it is present in all ethnic groups. As such, it is not possible to describe a single typical clinical presentation. Some examples are discussed below which illustrate the clinical heterogeneity of the condition.

Example 1

A 62-year-old woman, who is a lifelong nonsmoker, presents with a 5-year history of cough and sputum production. The symptoms have become worse recently. She was diagnosed with asthma and given an inhaled corticosteroid, which has had little effect. She improves with antibiotics, but her symptoms recur a few days after stopping antibiotics. Spirometry shows an FEV₁ of 88% predicted, with no airflow obstruction. Sputum culture grows *Haemophilus influenzae*. A high-resolution CT is performed and shows bilateral lower lobe bronchiectasis.

Although it would be important in this case to exclude other possible causes of bronchiectasis, this is the typical presentation of a patient with “idiopathic” bronchiectasis [1]. 60–80% of bronchiectasis patients are female, and presentation is very common between the ages of 50–70 years [62, 63, 67]. The reasons for this preponderance in post-menopausal females are unknown. The delay in diagnosis is common. The good, but short-lived response to antibiotics is also a common feature that should raise suspicion of bronchiectasis [1].

Example 2

A 71-year-old woman, who is a lifelong nonsmoker, presents with a 2-year history of cough,

Table 2 Bradford-Hill criteria for causality applied to the association between COPD, asthma and bronchiectasis

Bradford Hill criteria	COPD	Asthma
Strength of association/ effect size	Some studies report strong associations but may have methodological limitations	Strong association demonstrated
Consistency/reproducibility	Reported by several studies with most reporting a high prevalence	Reported by several studies with most reporting a high prevalence
Specificity	Lacking, as there are often other possible causes present	Lacking, as there are often other possible causes present
Temporality	Rarely demonstrated	Rarely demonstrated
Biological gradient	Clearly demonstrated across multiple studies that as COPD becomes more severe bronchiectasis is more prevalent	Some evidence that bronchiectasis is more common in more severe asthma
Plausibility	Both COPD and bronchiectasis are characterised by neutrophilic inflammation and share common features and therefore probably some common pathophysiology	Strong association between bronchiectasis and ABPA proves an association with eosinophilic inflammation, therefore association with asthma is highly plausible
Coherence	Not fully testable	Not fully testable
Experiment	Experimental models of COPD are generally poor and conclusions cannot be drawn	Experimental models of asthma do not show features of bronchiectasis
Analogy	COPD fits the model of the vicious cycle of bronchiectasis, being characterised by airway inflammation, infection and airway damage	Asthma fits the model of the vicious cycle of bronchiectasis, being characterised by airway inflammation, infection and airway damage

which was largely unproductive, and recent shortness of breath and weight loss. Her current BMI is 18.3 kg·m⁻². She undergoes a high-resolution CT scan which shows localised bronchiectasis in the right middle lobe with a nodular appearance. She produces two sputum samples that are negative for typical bacterial pathogens and grow no Mycobacteria. Nevertheless, due to clinical suspicion she underwent a bronchoscopy, with the washings isolating *M. avium*.

A high index of suspicion is required for NTM as it may present in patients without this typical “Lady Windermere syndrome” history. Patients are typically middle aged or elderly females and may have scoliosis and a low BMI [68]. The middle lobe or lingular bronchiectasis and nodular changes are classical, but are not required for diagnosis and so all patients with bronchiectasis should have sputum tested for NTM at diagnosis and during a clinical deterioration. Sputum cultures are sometimes negative for NTM even in those patients with active infection, either due to poor quality samples or low bacterial loads present; therefore, bronchoscopic sampling should be considered in patients with a high index of suspicion, as in this case [68].

Example 3

A 24-year-old man presents with cough and sputum production and persistent rhinosinusitis. His chest radiograph is normal, but a high-resolution CT scan suggests bilateral bronchiectasis. BMI is normal, and there is no suggestion

of malabsorption and no history of neonatal distress or respiratory infections. There is no family history of respiratory problems. There is a history of recurrent otitis media during childhood leading to unilateral hearing loss.

This patient has PCD. Although it would be appropriate to exclude CF and immunodeficiency, the history of rhinosinusitis and middle ear infections is typical and these features are almost universal in some series of PCD. Although most cases will be detected in childhood it is important to have a high index of suspicion in patients presenting in early adulthood with bronchiectasis [69].

Clinical impact of bronchiectasis

Bronchiectasis has a major impact on patients in terms of symptoms, exacerbations and quality of life. In severe cases, bronchiectasis is also associated with a life expectancy shorter than that of the general population [70]. In specialist centres, ~50% of patients will die from respiratory complications such as respiratory failure and respiratory infections, with 50% dying from nonrespiratory causes [62].

Mortality rates have been reported at 2–5% over 2 years, 10–30% at 5 years and up to 35% at 15 years [61, 62, 70].

Patients may experience 0–12 exacerbations per year, with the average in most series being between one and three exacerbation per year [71–73]. Severe exacerbations requiring hospital

admission and intravenous antibiotics have a greater impact in terms of healthcare costs, as well as in terms of long-term prognosis as they are associated with more significant lung function decline and increased mortality [62].

The St George's Respiratory Questionnaire has been extensively used in bronchiectasis as in other respiratory diseases allowing a comparison of the burden of bronchiectasis to other disorders. In this sense, the quality of life impairment seen in bronchiectasis is equivalent to that observed in idiopathic pulmonary fibrosis or moderate-to-severe COPD [12].

The impact of bronchiectasis is highly variable. Mild disease is characterised by the absence of bacterial colonisation, infrequent exacerbations, less radiological extension and fewer symptoms. While features of severe disease include colonisation with *P. aeruginosa*, frequent and severe exacerbations, severe breathlessness and lung function impairment with more extensive radiological disease [62, 74]. A scoring system incorporating these variables, named the Bronchiectasis Severity Index, has been developed to guide prognostication in bronchiectasis and has been extensively validated in Europe, China and in other healthcare systems [62, 75, 76].

While there is a move towards managing bronchiectasis in specialised clinics or centres in some countries, such as the UK, this is unusual in the majority of countries worldwide. Some patients with more severe bronchiectasis are cared for in CF clinics. A survey by the European Bronchiectasis Network (EMBARC) of 231 European centres suggested that the majority (52%) managed patients in general respiratory clinics [77].

Clinical impact of CF

In the mid-20th century CF was recognised, but was usually fatal in early childhood because of a combination of respiratory infections and non-pulmonary complications such as malabsorption and intestinal obstruction [8, 9]. Progressive improvements in care over time, including the development of pancreatic enzyme replacement, improved nutrition, systemic antibiotic treatment, mucocactive treatments and the recognition and treatment of infection with *P. aeruginosa* have driven remarkable improvements in life expectancy [8, 9, 78]. Key to these developments has been the establishment of specialised care centres and robust standards of care [79].

CF is now in the process of changing from a predominantly "paediatric" disease to one where the major burden of care is in adults [9]. The median survival reported from the US and other national registries is ~40 years, and is expected to rise further in the coming years [9].

Despite these improvements there remains a very high burden of disease and treatment

associated with CF. Care is highly complex and multisystem including provision for nutrition/dietetics, CF-related diabetes, CF-related liver disease, psychology, physiotherapy and all aspects related to the care of pulmonary complications. Complications of CF in adulthood are most frequently pulmonary, and include severe exacerbations, respiratory failure, pneumothorax, massive haemoptysis and requirement for lung transplantation [8, 9, 79]. CF care requires centralisation and concentration of expertise. The European Cystic Fibrosis Society standards of care describe the optimal make-up, size and facilities available in a specialist CF centre. Specialist CF centres should typically care for more than 100 patients [79].

Bronchiectasis and CF in Europe

Current prevalence estimates for bronchiectasis, excluding CF, are highly variable across different healthcare systems. German data report a rate of 67 per 100000 while accepting this may be an underestimate [80]. Recent UK data suggests the condition is surprisingly common with rates of prevalence of 566 per 100000 for women in the most recent year of data (2013). Rates were even higher when limited to the population aged >65 years, approaching 1% of the population [53]. Whether these UK data are applicable more widely across Europe is not known.

Data suggest that there is some variability regarding the aetiologies across Europe. Post-infectious bronchiectasis is the most commonly identified aetiology across European countries, although the data suggest that is more frequent in the southern countries (Greece, Italy and Spain) [16]. A recent analysis from Greece found that the leading cause of disease was post-TB, reflecting the higher rates of TB prevalence in Eastern or South-east Europe compared with Western Europe, from where the bulk of publications on bronchiectasis have arisen to date [81–83].

CF is more prevalent in Europe, North America and Australasia, and occurs mainly in children of European descent [84]. Across the European countries, Ireland has the highest incidence rate, while the UK and Italy have also a high incidence of CF [85]. Eastern Europe (Poland, Bulgaria and Romania) and Baltic countries (Latvia and Lithuania) have a much lower incidence [84, 85].

Bronchiectasis and CF in North America

There are more than 28000 people in the USA with CF. These patients are cared for in regional, multidisciplinary CF centres accredited by the CF Foundation. Tremendous advances in diagnostics

and therapeutics over the past two decades have resulted in a shift in demographics in the USA such that the majority of patients with CF are now >18 years of age [86].

While patients with CF are generally cared for by centres accredited by a well-organised system, the majority of patients with non-CF bronchiectasis in the USA are cared for by pulmonologists in settings varying from general pulmonary practice to dedicated, but not standardised, bronchiectasis clinics. In 2007, the COPD Foundation Bronchiectasis and NTM Research Registry was established to better characterise the burden of disease in the USA and to coordinate research efforts. This collaborative initiative has approximately a dozen participating sites including academic research institutions, which are referral centres for refractory or challenging cases and have particular experience in caring for difficult-to-treat infectious aetiologies, such as NTM [87]. Earlier prevalence estimates of non-CF bronchiectasis in the USA were ~52 per 100000, which is close to the European Union definition of an orphan disease (50 per 100000). More recently, Seitz *et al.* [88] reported a prevalence in the Medicare outpatient claims database of 370 per 100000, with the highest prevalence occurring in females aged 80–84 years (prevalence of 537 per 100000).

The rates of NTM lung disease in patients with non-CF bronchiectasis in the USA have been highly variable, but are reported to range from 10 to 30% with an overall increasing trend [89]. There may be some bias in these rates as data are collected from referral centres with regional expertise in caring for NTM disease. The rates of NTM in CF patients in the USA have been reported to range from 10 to 20% with considerable geographic variation [90].

Bronchiectasis and CF in Asia

Bronchiectasis is a relatively common disease in the Asia-Pacific region. However, there is scant research interest and hence the true prevalence is unknown. The disease is underdiagnosed and many patients are diagnosed as COPD or asthma. The disease is thought to be more prevalent in those of lower socioeconomic status where immunisation rates are low [91, 92]. Bronchiectasis is very common in indigenous Australians and particularly in children [93].

Hong Kong government statistics show a hospital admission rate of ~16.4 per 100000, and the mortality rate was 1 per 100000 population in 1990 [94]. Under-reporting is a major problem because bronchiectasis patients are treated primarily on an outpatient basis.

Idiopathic disease still seems to be the commonest cause of bronchiectasis, as in the West, but there is a much higher rate of post-TB

bronchiectasis in some Asian countries. Among 100 patients with bronchiectasis analysed in Hong Kong 82% were found to have idiopathic disease and 8% had post-TB bronchiectasis [95]. The low rate of post-TB bronchiectasis reflects the effective TB control programme in Hong Kong. Preliminary data from the Indian bronchiectasis registry (EMBARC India; unpublished data) also shows that idiopathic disease is the most common cause, even though the incidence of post-TB bronchiectasis is much higher in India compared with Hong Kong. Epidemiological data from Thailand shows that post-TB bronchiectasis is the most common cause in that country [96]. Studies emerging from Hong Kong, Busan in South Korea and EMBARC India show that *P. aeruginosa* is the commonest organism infecting the airways of patients with bronchiectasis [97]. *M. avium* complex pulmonary disease with nodules and bronchiectasis is also increasingly recognised in Asia including Japan [98]. NTM, which included *M. kansasii* and *M. chelonae*, were found in 6% of cases from Thailand [96].

Classical CF, with pancreatic insufficiency and progressive lung disease, is rare in the non-white population despite the greater presence of F508 mutation among the indigenous South Asian population [99]. The prevalence of classical CF in Japan is 1 in 350000, while sporadic cases have been reported from indigenous Sri Lankans, Indians, Pakistanis, Chinese, American-Indians, black Africans, Malays and Arabs [100, 101].

Management

Treatment of bronchiectasis and CF is beyond the scope of this review. Nevertheless, the treatment of each can be considered in terms of correcting the underlying cause where possible, which in CF now includes the possibility to correct or modulate the underlying defect. Thereafter management is directed towards treatment of bronchial infection, including oral and inhaled antibiotics for stable disease and prompt treatment of exacerbations, anti-inflammatory therapy, and chest clearance including physiotherapy and mucoactive drugs. For further information there are several reviews and guidelines on these topics [1, 2, 79].

Future directions

Bronchiectasis and CF are rapidly developing fields. The epidemiology of bronchiectasis is being increasingly understood with a large contribution from registry initiatives worldwide. The European Bronchiectasis Registry (EMBARC) is a European Respiratory Society initiative to stimulate clinical research in this neglected field and has operated a registry since early 2015 [102]. At the time of writing more than 3000 patients have been enrolled

Self-evaluation questions

- 1 Regarding the aetiological diagnosis of bronchiectasis, which of the following is true?
 - a) Bronchiectasis affecting a single lobe is nearly always post-infectious
 - b) The only mandatory investigation for all bronchiectasis patients is serum immunoglobulin
 - c) CF should be excluded in all children and adults presenting with bronchiectasis
 - d) It is inappropriate to test for AATD in patients with bronchiectasis, regardless of the clinical presentation
 - e) NTM infection is strongly associated with bronchiectasis and it is important to rule out NTM in patients with bronchiectasis
- 2 Considering the impact of bronchiectasis, which of the following is false?
 - a) Exacerbations of bronchiectasis not due to CF account for a large proportion of the economic impact on the healthcare systems
 - b) As a result of the complex and multisystemic involvement of CF, treatment and follow-up care in specialist centres with multidisciplinary care teams is recommended.
 - c) The impact of bronchiectasis not due to CF is highly variable, with mild disease being characterised by infrequent exacerbations and the presence of *P. aeruginosa* colonisation
 - d) CF is no longer just the childhood disease it was years ago; today, the median survival is ~40 years old
 - e) Airflow obstruction is associated with increased mortality in patients with non-CF bronchiectasis
- 3 A 26-year-old female presents for evaluation of a cough productive of thick mucus plugs, wheezing and difficult-to-control asthma. High-resolution CT demonstrates central bronchiectasis and bronchial wall thickening with mucus plugging to the right upper lobe. What is the test most likely to reveal the diagnosis?
 - a) Mannitol challenge test
 - b) Sweat chloride test and CF genetics
 - c) Serum total IgE and IgE to *Aspergillus*
 - d) Serum rheumatoid factor
 - e) Flexible bronchoscopy
- 4 A 37-year-old male presents with bilateral upper lobe bronchiectasis. He complains of persisting cough and large sputum volumes. He developed symptoms in his early 20's and was unsuccessfully treated for asthma with inhaled corticosteroids. He is married with no children and works in a factory. He gets brief relief from antibiotics but symptoms rapidly recur. The most recent sputum culture grew *S. aureus*. He denies any other medical history. What is the most likely underlying diagnosis?
 - a) NTM infection
 - b) HIV infection
 - c) Asthma associated bronchiectasis
 - d) CF
 - e) Common variable immunodeficiency
- 5 Which of the following statements regarding geographical associations is not true?
 - a) NTM infection is more common as a cause of bronchiectasis in the USA than in Western Europe
 - b) The most common cause of bronchiectasis in India is post-infectious bronchiectasis
 - c) CF is a disease primarily affecting persons of European descent
 - d) The incidence of bronchiectasis is high in indigenous Australians
 - e) Bronchiectasis is underdiagnosed in East and South-east Asia compared with Europe and North America

from more than 20 countries. Importantly, this initiative is also working with and supporting epidemiological research worldwide. This includes EMBARC India, the Indian bronchiectasis registry, which will generate the first population-based data on the characteristics and treatment of bronchiectasis in South Asia, and the Australian Lung Foundation registry, which will provide important data in both adults and children from Australasia. In the USA, the US NTM and bronchiectasis registry has enrolled more than 2000 patients at the time of writing [87]. Such international efforts are building on the success and contribution of US and European CF registries, which have been exceptionally important in understanding the natural history of CF and also in supporting randomised

clinical trials of new therapies [103]. Ultimately the goal of all these epidemiological efforts must be to produce better standards of care and better treatments for our patients. An EMBARC task force recently reported on 22 research priorities for bronchiectasis agreed between expert physicians and patients aimed at driving such improvements. These included better epidemiology, improved provision of care and priority randomised clinical trials [104].

Conclusion

Bronchiectasis is a radiological abnormality that is associated with a wide range of clinical disorders including infectious, inflammatory and congenital

disorders, including CF. Each individual disorder may be rare, but together the clinical problem is common and growing. All respiratory physicians should be aware of the clinical presentation and

potential underlying causes of bronchiectasis in order to ensure appropriate early diagnosis and optimal treatment.

Support statement

This work was supported by EMBARC, a European Respiratory Society Clinical Research Collaboration and EMBARC India, an initiative of EMBARC and the Respiratory Research Network of India (RRNI).

Conflict of interest

Disclosures can be found alongside this article at breathe.ersjournals.com

References

- Pasteur MC, Bilton D, Hill AT. British Thoracic Society guideline for non-CF bronchiectasis. *Thorax* 2010; 65: Suppl., i1-i58.
- Chalmers JD, Aliberti S, Blasi F. Treatment of bronchiectasis in adults. *Eur Respir J* 2015; 45: 1446-1462.
- Amaral RH, Schuler Nin C, de Souza VV, et al. Computed tomography in the diagnosis of bronchiectasis. *Eur Respir J* 2015; 46: 576-577.
- Matsuoka S, Uchiyama K, Shima H, et al. Bronchoarterial ratio and bronchial wall thickness on high-resolution CT in asymptomatic subjects: correlation with age and smoking. *AJR Am J Roentgenol* 2003; 180: 513-518.
- Reiff DB, Wells AU, Carr DH, et al. CT findings in bronchiectasis: limited value in distinguishing between idiopathic and specific types. *AJR Am J Roentgenol* 1995; 165: 261-267.
- Chalmers JD, McHugh BJ, Doherty CJ, et al. Vitamin-D deficiency is associated with chronic bacterial colonisation and disease severity in non-CF bronchiectasis. *Thorax* 2012; 68: 39-47.
- Bronchiectasis. In: Gibson J, Lodenkemper R, Sibille Y, et al., eds. *The European Lung White Book*. 2nd Edn. Sheffield, European Respiratory Society, 2013; pp. 176-183.
- Burgel PR, Bellis G, Olesen HV, et al. Future trends in cystic fibrosis demography in 34 European countries. *Eur Respir J* 2015; 46: 133-141.
- Stephenson AL, Tom M, Berthiaume Y, et al. A contemporary survival analysis of individuals with cystic fibrosis: a cohort study. *Eur Respir J* 2015; 45: 670-679.
- Barr HL, Halliday N, Cámara M, et al. *Pseudomonas aeruginosa* quorum sensing molecules correlate with clinical status in cystic fibrosis. *Eur Respir J* 2015; 46: 1046-1054.
- Chalmers JD, Smith MP, McHugh B, et al. Short and long term antibiotic therapy reduces airway and systemic inflammation in non-CF bronchiectasis. *Am J Respir Crit Care Med* 2012; 186: 657-665.
- Chalmers JD, Hill AT. Mechanisms of immune dysfunction and bacterial persistence in non-cystic fibrosis bronchiectasis. *Mol Immunol* 2013; 55: 27-34.
- Cole PJ. Inflammation: a two-edged sword - the model of bronchiectasis. *Eur J Respir Dis Suppl* 1986; 147: 6-15.
- Garratt LW, Sutanto EN, Ling KM, et al. Matrix metalloproteinase activation by free neutrophil elastase contributes to bronchiectasis progression in early cystic fibrosis. *Eur Respir J* 2015; 46: 384-394.
- Kelly MG, Murphy S, Elborn JS. Bronchiectasis in secondary care: a comprehensive profile of a neglected disease. *Eur J Intern Med* 2003; 14: 488-492.
- Lonni S, Chalmers JD, Goeminne PC, et al. Etiology of non-cystic fibrosis bronchiectasis in adults and its relationship to severity. *Ann Am Thorac Soc* 2015; 12: 1764-1770.
- Chalmers JD, Elborn JS. Reclaiming the name 'bronchiectasis'. *Thorax* 2015; 70: 399-400.
- McShane PJ, Naureckas ET, Streck ME. Bronchiectasis in a diverse US population: effects of ethnicity on etiology and sputum culture. *Chest* 2012; 142: 159-167.
- Anwar GA, McDonnell MJ, Worthy SA, et al. Phenotyping adults with non-cystic fibrosis bronchiectasis: a prospective observational cohort study. *Respir Med* 2013; 107: 1001-1007.
- Albrecht C, Ringshausen F, Ott S, et al. Should all adult cystic fibrosis patients with repeated nontuberculous mycobacteria cultures receive specific treatment? A 10-year case-control study. *Eur Respir J* 2016; 47: 1575-1577.
- Yeung MW, Khoo E, Brode SK, et al. Health-related quality of life comorbidities and mortality in pulmonary nontuberculous mycobacterial infections: a systematic review. *Respirology* 2016; 21: 1015-1025.
- Wurzel DF, Mackay IM, Marchant JM, et al. Adenovirus species C is associated with chronic suppurative lung diseases in children. *Clin Infect Dis* 2014; 59: 34-40.
- Verma N, Grimbacher B, Hurst JR. Lung disease in primary antibody deficiency. *Lancet Respir Med* 2015; 3: 651-660.
- Dhasmana DJ, Wilson R. Bronchiectasis and autoimmune disease. In: Floto RA, Haworth CS, eds. *Bronchiectasis (ERS Monograph)*. Sheffield, European Respiratory Society, 2011; pp. 192-210.
- Perry E, Stenton C, Kelly C, et al. RA autoantibodies as predictors of rheumatoid arthritis in non-cystic fibrosis bronchiectasis patients. *Eur Respir J* 2014; 44: 1082-1085.
- Camus PH, Colby TV. Bronchiectasis associated with inflammatory bowel disease. In: Floto RA, Haworth CS, eds. *Bronchiectasis (ERS Monograph)*. Sheffield, European Respiratory Society, 2011; pp. 163-177.
- Agarwal R, Aggarwal AN, Sehgal IS, et al. Utility of IgE (total and *Aspergillus fumigatus* specific) in monitoring for response and exacerbations in allergic bronchopulmonary aspergillosis. *Mycoses* 2016; 59: 1-6.
- Agarwal R, Aggarwal AN, Dhooria S, et al. A randomized trial of glucocorticoids in acute-stage allergic bronchopulmonary aspergillosis complicating asthma. *Eur Respir J* 2016; 47: 490-498.
- Braido F, Baiardini I, Sumneresi M, et al. Public awareness of cystic fibrosis: results from a national pragmatic survey. *Eur Respir J* 2015; 46: 264-267.
- Castellani C, Massie J, Sontag M, et al. Newborn screening for cystic fibrosis. *Lancet Respir Med* 2016; in press [DOI: 10.1016/S2213-2600(16)00053-9].
- George PM, Banya W, Pareek N, et al. Improved survival at low lung function in cystic fibrosis: cohort study from 1990 to 2007. *BMJ* 2011; 342: d1008.
- Davis PB. Cystic fibrosis since 1938. *Am J Respir Crit Care Med* 2006; 173: 475-482.

Suggested answers

1. e.
2. c.
3. c.
4. d.
5. b.

33. Dilokthornsakul P, Hansen RN, Campbell JD. Forecasting US ivacaftor outcomes and cost in cystic fibrosis patients with the G551D mutation. *Eur Respir J* 2016; 47: 1697-1705.
34. Bush A, Cole P, Harii M, *et al.* Primary ciliary dyskinesia: diagnosis and standards of care. *Eur Respir J* 1998; 12: 982-988.
35. Turner JA, Corkey CW, Lee JY, *et al.* Clinical expression of immotile cilia syndrome. *Pediatrics* 1981; 67: 805-810.
36. Lucas JS, Behan L, Dunn Galvin A, *et al.* A quality-of-life measure for adults with primary ciliary dyskinesia: QOL-PCD. *Eur Respir J* 2015; 46: 375-383.
37. Tobin MJ, Cook PJ, Hutchison DC. Alpha 1 antitrypsin deficiency: the clinical and physiological features of pulmonary emphysema in subjects homozygous for Pi type Z. A survey by the British Thoracic Association. *Br J Dis Chest* 1983; 77: 14-27.
38. Parr DG, Guest PG, Reynolds JH, *et al.* Prevalence and impact of bronchiectasis in alpha1-antitrypsin deficiency. *Am J Respir Crit Care Med* 2007; 176: 1215-1221.
39. Pasteur MC, Helliwell SM, Houghton SJ, *et al.* An investigation into causative factors in patients with bronchiectasis. *Am J Respir Crit Care Med* 2000; 162: 1277-1284.
40. McShane P, Patel N, MacMahon H, *et al.* Bronchiectasis in hematologic malignancy. *Chest* 2011; 140: 458A.
41. Morehead RS. Bronchiectasis in bone marrow transplantation. *Thorax* 1997; 52: 392-393.
42. Mandal P, Morice AH, Chalmers JD, *et al.* Symptoms of airway reflux predict exacerbations and quality of life in bronchiectasis. *Respir Med* 2013; 107: 1008-1013.
43. McDonnell MJ, Ahmed M, Das J, *et al.* Hiatus hernias are correlated with increased severity of non-cystic fibrosis bronchiectasis. *Respirology* 2015; 20: 749-757.
44. Nimmo C, Capocci S, Honeyborne I, *et al.* Airway bacteria and respiratory symptoms are common in ambulatory HIV-positive UK adults. *Eur Respir J* 2015; 46: 1208-1211.
45. Rossouw TM, Anderson R, Feldman C. Impact of HIV infection and smoking on lung immunity and related disorders. *Eur Respir J* 2015; 46: 1781-1795.
46. Verghese A, al-Samman M, Nabhan D, *et al.* Bacterial bronchitis and bronchiectasis in human immunodeficiency virus infection. *Arch Intern Med* 1994; 154: 2086-2091.
47. Kurin M, Wiesen J, Mehta AC. Yellow nail syndrome: a case report and review of treatment options. *Clin Respir J* 2015; in press [DOI: 10.1111/crj.12354].
48. Casso G, Schoettler P. Tracheobronchomegaly. *N Engl J Med* 2016; 374: e14.
49. Winter DH, Manzini M, Salge JM, *et al.* Aging of the lungs in asymptomatic lifelong nonsmokers: findings on HRCT. *Lung* 2015; 193: 283-290.
50. de Marco R, Marcon A, Rossi A, *et al.* Asthma, COPD and overlap syndrome: a longitudinal study in young European adults. *Eur Respir J* 2015; 46: 671-679.
51. Rodrigo-Troyano A, Suarez-Cuartin G, Peiro M, *et al.* *Pseudomonas aeruginosa* resistance patterns and clinical outcomes in hospitalised exacerbations of COPD. *Respirology* 2016; in press [DOI: 10.1111/resp.12825].
52. Blasi F, Chalmers JD, Aliberti S. COPD and bronchiectasis: phenotype, endotype or comorbidity. *COPD* 2014; 11: 603-604.
53. Quint JK, Millett ER, Joshi M, *et al.* Changes in the incidence, prevalence and mortality of bronchiectasis in the UK from 2004 to 2013: a population based cohort study. *Eur Respir J* 2016; 47: 186-193.
54. Hurst JR, Elborn JS, De Soyza A. COPD-bronchiectasis overlap syndrome. *Eur Respir J* 2015; 45: 310-313.
55. Hill AT, Pasteur M, Cornford C, *et al.* Primary care summary of the British Thoracic Society guideline on the management of non-cystic fibrosis bronchiectasis. *Prim Care Respir J* 2011; 20: 135-140.
56. Mao B, Yang JW, Lu HW, *et al.* Asthma and bronchiectasis exacerbation. *Eur Respir J* 2016; 47: 1680-1686.
57. Paganin F, Seneterre E, Chanez P, *et al.* Computed tomography of the lungs in asthma: influence of disease severity and etiology. *Am J Respir Crit Care Med* 1996; 153: 110-114.
58. Agusti A, Calverley PM, Celli B, *et al.* Characterisation of COPD heterogeneity in the ECLIPSE cohort. *Respir Res* 2010; 11: 122.
59. Stewart JL, Maselli DJ, Anzueto A, *et al.* Clinical impact of CT radiological feature of bronchiectasis in the COPD-gene cohort. *Am J Respir Crit Care Med* 2012; 185: Suppl., A3656.
60. Ni Y, Shi G, Yu Y, *et al.* Clinical characteristics of patients with chronic obstructive pulmonary disease with comorbid bronchiectasis: a systematic review and meta-analysis. *Int J Chron Obstruct Pulmon Dis* 2015; 10: 1465-1475.
61. Goeminne PC, Nawrot TS, Ruttens D, *et al.* Mortality in non-cystic fibrosis bronchiectasis: a prospective cohort analysis. *Respir Med* 2014; 108: 287-296.
62. Chalmers JD, Goeminne P, Aliberti S, *et al.* Derivation and validation of the bronchiectasis severity index: an international multicentre observational study. *Am J Respir Crit Care Med* 2014; 189: 576-585.
63. Chalmers JD, McHugh BJ, Doherty C, *et al.* Mannose-binding lectin deficiency and disease severity in non-cystic fibrosis bronchiectasis: a prospective study. *Lancet Respir Med* 2013; 1: 224-232.
64. van Haren EH, Lammers JW, Festen J, *et al.* Bronchial vagal tone and responsiveness to histamine, exercise and bronchodilators in adults with cystic fibrosis. *Eur Respir J* 1992; 5: 1083-1088.
65. Rodwell LT, Anderson SD. Airway responsiveness to hyperosmolar saline challenge in cystic fibrosis: a pilot study. *Pediatric Pulmonol* 1996; 21: 282-289.
66. Welsh EJ, Evans DJ, Fowler SJ, *et al.* Interventions for bronchiectasis: an overview of Cochrane systematic reviews. *Cochrane Database Syst Rev* 2015; 14: CD010337.
67. De Soyza A, Pavord I, Elborn JS, *et al.* A randomised, placebo-controlled study of the CXCR2 antagonist AZD5069 in bronchiectasis. *Eur Respir J* 2015; 46: 1021-1032.
68. Park IK, Olivier KN. Nontuberculous mycobacteria in cystic fibrosis and non-cystic fibrosis bronchiectasis. *Semin Respir Crit Care Med* 2015; 36: 217-224.
69. Lucas J, Leigh MW. Diagnosis of primary ciliary dyskinesia: searching for a gold standard. *Eur Respir J* 2014; 44: 1418-1422.
70. Loebinger MR, Wells AU, Hansell DM, *et al.* Mortality in bronchiectasis: a long-term study assessing the factors influencing survival. *Eur Respir J* 2009; 34: 843-849.
71. Sibila O, Suarez-Cuartin G, Rodrigo-Troyano A, *et al.* Secreted mucins and airway bacterial colonization in non-CF bronchiectasis. *Respirology* 2015; 20: 1082-1088.
72. Mandal P, Chalmers JD, Graham C, *et al.* Atorvastatin as a stable treatment in bronchiectasis: a randomised controlled trial. *Lancet Respir Med* 2014; 2: 455-463.
73. Rogers GB, Zain NM, Bruce KD, *et al.* A novel microbiota stratification system predicts future exacerbations in bronchiectasis. *Ann Am Thorac Soc* 2014; 11: 496-503.
74. Finch S, McDonnell MJ, Abo-Leyah H, *et al.* A comprehensive analysis of the impact of *Pseudomonas aeruginosa* colonization on prognosis in adult bronchiectasis. *Ann Am Thorac Soc* 2015; 12: 1602-1611.
75. Guan WJ, Chen RC, Zhong NS. The bronchiectasis severity index and FACED score for bronchiectasis. *Eur Respir J* 2016; 47: 382-384.
76. Guan WJ, Gao YH, Xu G, *et al.* Bronchodilator response in adults with bronchiectasis: correlation with clinical parameters and prognostic implications. *J Thorac Dis* 2016; 8: 14-23.
77. Chalmers JD, Polverino E, De Soyza A, *et al.* Heterogeneity in bronchiectasis service provision in Europe: baseline data from the European Bronchiectasis Registry (EMBARC). *Eur Respir J* 2015; 46: Suppl. 59, PA374.
78. Döring G, Hoiby N, Consensus Study Group. Early intervention and prevention of lung disease in cystic fibrosis: a European consensus. *J Cyst Fibros* 2004; 3: 67-91.
79. Smyth AR, Bell SC, Bojcin S, *et al.* European Cystic Fibrosis Society standards of care: best practice guidelines. *J Cyst Fibros* 2014; 13: Suppl., S23-S42.
80. Ringshausen FC, de Roux A, Diel R, *et al.* Bronchiectasis in Germany: a population-based estimation of disease prevalence. *Eur Respir J* 2015; 46: 1805-1807.

81. Dimakou K, Triantafyllidou C, Toumbis M, *et al.* Non CF-bronchiectasis: aetiologic approach, clinical, radiological, microbiological and functional profile in 277 patients. *Respir Med* 2016; 116: 1–7.
82. Falzon D, Mirzayev F, Wares F, *et al.* Multidrug-resistant tuberculosis around the world: what progress has been made? *Eur Respir J* 2015; 45: 150–160.
83. Pym AS, Diacon AH, Tang SJ, *et al.* Bedaquiline in the treatment of multidrug- and extensively drug-resistant tuberculosis. *Eur Respir J* 2016; 47: 564–574.
84. Mehtaa G, Macek M, Mehtaa A. Cystic fibrosis across Europe: EuroCareCF analysis of demographic data from 35 countries. *J Cyst Fibros* 2010; 9: Suppl., S5–S21.
85. Begum M, Lwison G, Wright J, *et al.* European non-communicable respiratory disease research, 2002–13: bibliometric study of outputs and funding. *PLoS One* 2016; 11: e0154197.
86. Cystic Fibrosis Foundation. Patient Registry Annual Data Report 2014. Bethesda, Cystic Fibrosis Foundation, 2015. www.cff.org/2014-Annual-Data-Report.pdf
87. Aksamit TR, Carretta E, Daley CL, *et al.* The Bronchiectasis Research Registry: a collaborative research cohort for non-cystic fibrosis bronchiectasis. *Am J Respir Crit Care Med* 2012; 185: Suppl., A3654.
88. Seitz AE, Olivier KN, Adjemian J, *et al.* Trends in bronchiectasis among Medicare beneficiaries in the United States, 2000 to 2007. *Chest* 2012; 142: 432–439.
89. Mirsaeidi M, Hadid W, Ericoussi B, *et al.* Non-tuberculous mycobacterial disease is common in patients with non-cystic fibrosis bronchiectasis. *Int J Infect Dis* 2013; 17: e1000–e1004.
90. Adjemian J, Olivier KN, Prevots DR. Nontuberculous mycobacteria among patients with cystic fibrosis in the United States: screening practices and environmental risk. *Am J Respir Crit Care Med* 2014; 190: 581–586.
91. Tsang KW, Tipoe GL. Bronchiectasis: not an orphan disease in the East. *Int J Tuberc Lung Dis* 2004; 8: 691–702.
92. Edwards EA, Asher MI, Byrnes CA. Paediatric bronchiectasis in the twenty-first century: experience of a tertiary children's hospital in New Zealand. *J Paediatr Child Health* 2003; 39: 111–117.
93. Chang AB, Grimwood K, Maguire G, *et al.* Management of bronchiectasis and chronic suppurative lung disease in indigenous children and adults from rural and remote Australian communities. *Med J Aust* 2008; 189: 386–393.
94. Chan-Yeung M, Lai CKW, Chan K-S, *et al.* The burden of lung disease in Hong Kong: a report from the Hong Kong Thoracic Society. *Respirology* 2008; 13: Suppl., S133–S165.
95. Tsang KW, Lam SK, Lam WK, *et al.* High seroprevalence of *Helicobacter pylori* in active bronchiectasis. *Am J Respir Crit Care Med* 1998; 158: 1047–1051.
96. Palwatwchai A, Chaoprasong C, Vattanatham A, *et al.* Clinical, laboratory findings and microbiologic characterization of bronchiectasis in Thai patients. *Respirology* 2002; 7: 63–66.
97. Lee YM. The clinical characteristics of patients with non-CF bronchiectasis. *Chest* 2011; 140: Suppl., 459A.
98. Tanaka E, Amitani R, Niimi A, *et al.* Yield of computed tomography and bronchoscopy for the diagnosis of *Mycobacterium avium* complex pulmonary disease. *Am J Respir Crit Care Med* 1997; 155: 2041–2046.
99. Kabra M, Kabra SK, Ghosh M, *et al.* Is the spectrum of mutations in Indian patients with cystic fibrosis different? *Am J Med Genet* 2000; 93: 161–163.
100. Yamashiro Y, Shimizu T, Oguchi S, *et al.* The estimated incidence of cystic fibrosis in Japan. *J Pediatr Gastroenterol Nutr* 1997; 24: 544–547.
101. Bowler IM, Estlin EJ, Littlewood JM. Cystic fibrosis in Asians. *Arch Dis Child* 1993; 68: 120–122.
102. Chalmers JD, Aliberti S, Polverino E, *et al.* The EMBARC European Bronchiectasis Registry: protocol for an international observational study. *ERJ Open Res* 2016; 2: 00081–2015.
103. Viviani L, Zolin A, Mehta A, *et al.* The European Cystic Fibrosis Society Patient Registry: valuable lessons learned on how to sustain a disease registry. *Orphanet J Rare Dis* 2014; 9: 81.
104. Aliberti S, Masefield S, Polverino E, *et al.* Research priorities in bronchiectasis: a consensus statement from the EMBARC Clinical Research Collaboration. *Eur Respir J* 2016; 48: 632–647.