



**University of Dundee**

**Bitter Melon (*Momordica charantia*) Extract Inhibits Tumorigenicity and Overcomes Cisplatin-Resistance in Ovarian Cancer Cells Through Targeting AMPK Signaling Cascade**

Yung, Mingo M H; Ross, Fiona A.; Hardie, D. Grahame; Leung, Thomas H Y; Zhan, Jinbiao; Ngan, Hextan Y S; Chan, David W.

*Published in:*  
Integrative Cancer Therapies

*DOI:*  
[10.1177/1534735415611747](https://doi.org/10.1177/1534735415611747)

*Publication date:*  
2016

*Document Version*  
Publisher's PDF, also known as Version of record

[Link to publication in Discovery Research Portal](#)

*Citation for published version (APA):*

Yung, M. M. H., Ross, F. A., Hardie, D. G., Leung, T. H. Y., Zhan, J., Ngan, H. Y. S., & Chan, D. W. (2016). Bitter Melon (*Momordica charantia*) Extract Inhibits Tumorigenicity and Overcomes Cisplatin-Resistance in Ovarian Cancer Cells Through Targeting AMPK Signaling Cascade. *Integrative Cancer Therapies*, 15(3), 376-389. DOI: 10.1177/1534735415611747

**General rights**

Copyright and moral rights for the publications made accessible in Discovery Research Portal are retained by the authors and/or other copyright owners and it is a condition of accessing publications that users recognise and abide by the legal requirements associated with these rights.

- Users may download and print one copy of any publication from Discovery Research Portal for the purpose of private study or research.
- You may not further distribute the material or use it for any profit-making activity or commercial gain.
- You may freely distribute the URL identifying the publication in the public portal.

# Bitter Melon (*Momordica charantia*) Extract Inhibits Tumorigenicity and Overcomes Cisplatin-Resistance in Ovarian Cancer Cells Through Targeting AMPK Signaling Cascade

Integrative Cancer Therapies  
2016, Vol. 15(3) 376–389  
© The Author(s) 2015  
Reprints and permissions:  
sagepub.com/journalsPermissions.nav  
DOI: 10.1177/1534735415611747  
ict.sagepub.com



Mingo M. H. Yung, PhD<sup>1</sup>, Fiona A. Ross, PhD<sup>2</sup>, D. Grahame Hardie, PhD<sup>2</sup>, Thomas H. Y. Leung, PhD<sup>1</sup>, Jinbiao Zhan, PhD<sup>3</sup>, Hextan Y. S. Ngan, MD, FRCOG<sup>1</sup>, and David W. Chan, PhD<sup>1</sup>

## Abstract

**Objective.** Acquired chemoresistance is a major obstacle in the clinical management of ovarian cancer. Therefore, searching for alternative therapeutic modalities is urgently needed. Bitter melon (*Momordica charantia*) is a traditional dietary fruit, but its extract also shows potential medicinal values in human diabetes and cancers. Here, we sought to investigate the extract of bitter melon (BME) in antitumorigenic and cisplatin-induced cytotoxicity in ovarian cancer cells. **Methods.** Three varieties of bitter melon were used to prepare the BME. Ovarian cancer cell lines, human immortalized epithelial ovarian cells (HOSEs), and nude mice were used to evaluate the cell cytotoxicity, cisplatin resistance, and tumor inhibitory effect of BME. The molecular mechanism of BME was examined by Western blotting. **Results.** Cotreatment with BME and cisplatin markedly attenuated tumor growth *in vitro* and *in vivo* in a mouse xenograft model, whereas there was no observable toxicity in HOSEs or in nude mice *in vivo*. Interestingly, the antitumorigenic effects of BME varied with different varieties of bitter melon, suggesting that the amount of antitumorigenic substances may vary. Studies of the molecular mechanism demonstrated that BME activates AMP-activated protein kinase (AMPK) in an AMP-independent but CaMKK (Ca<sup>2+</sup>/calmodulin-dependent protein kinase)-dependent manner, exerting anticancer effects through activation of AMPK and suppression of the mTOR/p70S6K and/or the AKT/ERK/FOXMI (Forkhead Box M1) signaling cascade. **Conclusion.** BME functions as a natural AMPK activator in the inhibition of ovarian cancer cell growth and might be useful as a supplement to improve the efficacy of cisplatin-based chemotherapy in ovarian cancer.

## Keywords

bitter melon, *Momordica charantia*, AMPK activator, cisplatin, ovarian cancer, chemoresistance

## Introduction

Ovarian cancer is the fifth most common cancer in the female population in the United States, accounting for approximately 5% of all cancers diagnosed among women.<sup>1-4</sup> The conventional course of therapy is maximal surgical debulking of the tumor mass followed by a combination of taxane and platinum-based chemotherapy.<sup>5</sup> Despite 70% of patients initially responding well to treatment, the emergence of drug resistance and side effects has rendered a wide variety of the currently available chemotherapeutic agents ineffective,<sup>6</sup> and the 5-year survival rate remains less than 40%.<sup>1-3,5,7,8</sup> Hence, there is a compelling need to explore novel therapeutic interventions for this disease.

The present studies were aimed at identification of alternative therapeutic approaches to enhance the efficacy of current chemotherapeutic regimes using nontoxic nutraceuticals that have health benefits beyond their normal nutritional properties.<sup>9</sup> Bitter melon (*Momordica charantia*),

<sup>1</sup>The University of Hong Kong, Hong Kong SAR, P R China

<sup>2</sup>University of Dundee, Dundee, Scotland, UK

<sup>3</sup>Zhejiang University, Hangzhou, P R China

### Corresponding Author:

David W. Chan, Department of Obstetrics and Gynaecology, LKS Faculty of Medicine, The University of Hong Kong, L747 Laboratory Block, 21 Sassoon Road, Pokfulam, Hong Kong.  
Email: dwchan@hku.hk

which is a popular herb in ancient folk medicines in China, India, Southeast Asia, and Central America, has received much global recognition not only because of its remarkable hypoglycemic effects, but also because of its recently recognized anticancer effects. The findings that bitter melon exhibits anticancer properties is reminiscent of metformin, a derivative of a natural plant product, originally developed as an insulin-sensitizing and antihyperglycemic drug used in the treatment of type II diabetes mellitus.<sup>10</sup> Recently, it has been suggested that the anticancer effects of metformin<sup>11,12</sup> might be a result of its capability to stimulate AMP-activated protein kinase (AMPK).<sup>13</sup> AMPK is a cellular energy sensor that plays an important role in the maintenance of energy homeostasis in response to external stresses.<sup>14,15</sup> Recent studies have suggested that AMPK reprograms cancer cell metabolism and inhibits cell proliferation in various human cancers.<sup>16,17</sup> Our previous investigations have demonstrated that growth of cervical cancer cells is significantly suppressed by a number of pharmacological activators of AMPK, such as metformin, AICAR, and A23187, by reducing the Wnt/ $\beta$ -catenin<sup>18</sup> and AKT/FOXO3a/Forkhead Box M1 (FOXM1)<sup>19</sup> signaling cascades. However, because of the toxic side effects of conventional AMPK activators such as metformin, which can cause lactic acidosis and gastrointestinal side effects,<sup>20,21</sup> the use of nontoxic, natural AMPK activators may be preferable to combat the development of ovarian cancer and chemoresistance.

Recent studies have suggested that extract of bitter melon (BME) contains triterpenoids and possesses the ability to activate AMPK and induce GLUT4 translocation<sup>9,22</sup>; however, its antitumor effects and the underlying molecular mechanisms are not totally clear. BME has potent antitumor activity against different cancer cells, probably because of the presence of some of its active components, including triterpenoids such as cucurbitacin B (cucB) and kuguacin J. Triterpenoids from a wide range of botanicals have already been confirmed to possess antiproliferative<sup>23-25</sup> and anti-invasive<sup>26,27</sup> features. More than 50 triterpenoids indeed have been extracted from bitter melon; however, their biological functions have yet to be investigated in detail. Recently, it had been reported that cucB, a triterpenoid from *Cucurbitaceae* vegetables, existed in the seeds of bitter melon as well and had induced cell cycle arrest and apoptosis in human colon adenocarcinoma cancer cells.<sup>25</sup> Another triterpenoid, kuguacin J, which accounts for only around 1.6% of bitter melon leaf extract, had been shown to significantly inhibit cancer and/or carcinogenesis by causing cell cycle arrest at the G1 phase and inducing apoptosis in pre-initiated or initiated tumor cells. In more advanced tumors, kuguacin J not only had the ability to sensitize chemoresistant cancer cells to anticancer drug-induced cell death, but also to successfully block tumor progression and metastasis, implying that natural compounds from BME might be useful in the development of chemopreventive as well as chemotherapeutic agents.

In this study, we examined the anticancer effects of BME and compared the tumor-suppressive properties of different varieties of bitter melon. Studies of the molecular mechanism revealed that BME acts as a natural AMPK activator, increasing AMPK through  $\text{Ca}^{2+}$ /calmodulin-dependent protein kinase- $\beta$  (CaMKK $\beta$ ) signaling in an AMP-independent manner, which in turn represses both mTOR/p70S6K and AKT/ERK/FOXM1 signals. It is important to note that based on the nontoxic nature of BME, we explored the possibility of using BME as a potential supplement to improve the efficacy of cisplatin-based chemotherapy in ovarian cancer.

## Materials and Methods

### Cell Culture, BME, and Drugs

Ovarian cancer cell lines A2780cp, A2780s, C13\*, OV2008 (provided by Professor B. K. Tsang, Department of Obstetrics and Gynecology, University of Ottawa, Canada; authentication of cell lines carried out by in-house STR DNA profiling analysis), SKOV3, OVCA433, ES2 (American Type Culture Collection, Rockville, MD), and 2 human immortalized epithelial ovarian cells (HOSEs), HOSE17-1 and HOSE 96-9-18 (provided by Professor G. S. W. Tsao, Department of Anatomy, The University of Hong Kong), were used in this study. Cells were maintained in Dulbecco's Modified Eagle's Medium (Invitrogen Life Technologies, Carlsbad, CA) supplemented with 10% (volume/volume [v/v]) fetal bovine serum (Invitrogen, Gibco, Gaithersburg, MD, USA) and 100 U/mL penicillin/streptomycin (Invitrogen Life Technologies, Carlsbad, CA) in an incubator at 37°C with humidified atmosphere of 5%  $\text{CO}_2$  and 95% air. Three varieties of young bitter melon (not yet ripe) such as Thailand, Chinese, and Taiwanese were purchased from the supermarket (Supplementary Figure S1, available at <http://ict.sagepub.com/supplemental>). After being washed and deseeded, bitter melon extract (BME) of each variety was extracted according to the method described in previous publications.<sup>28,29</sup> Briefly, BME was extracted by a household blender and centrifuged at 500g at 4°C for half an hour (Supplementary Figure S1). The supernatant was filtered using a 0.22  $\mu\text{m}$  syringe filter and stored in aliquots at -80°C for future use. As needed, 0.25% to 10% (v/v in medium) of pure BME was used for *in vitro* and *in vivo* studies. The BME samples were stored at the Department of Obstetrics and Gynecology, University of Hong Kong. AMPK activators AICAR, A23187, and metformin and the CaMKK $\beta$  inhibitor STO-609 were obtained from Tocris Bioscience (Bristol, UK).

### HEK-293 Cells Expressing Tetracycline-Inducible AMPK- $\gamma$ 2 (Wild Type or Mutant) and RNAi-Mediated AMPK $\alpha$ 1 Knockdown

DNA encoding full-length human AMPK- $\gamma$ 2 was amplified with primers designed to encode a 5'-BamHI site and a

C-terminal FLAG tag followed by an XhoI site. The resulting polymerase chain reaction (PCR) product was cloned into the pcDNA5/FRT (Flp recombinase target)/TO plasmid (Invitrogen) to create the plasmid pcDND5/FRT/TO/ $\gamma$ 2. The R531G mutation was created in this plasmid using the QuikChange Site-Directed Mutagenesis system (Stratagene). T-Rex HEK293 cells containing a single FRT site (Invitrogen) were transfected with Fugene6 (Promega, Madison, WI, USA) using the plasmids POG44 encoding Flp recombinase (Invitrogen) and pcDND5/FRT/TO/ $\gamma$ 2 at a ratio of 9:1. After 48 hours, the cells were detached using trypsin and replated in medium containing hygromycin B (200  $\mu$ g/mL) and blasticidin (15  $\mu$ g/mL). The medium was replaced every 3 days until cell foci could be identified, and individual foci were then selected and expanded. The expression of FLAG-tagged AMPK- $\gamma$ 2 was checked using Western blotting with anti-FLAG antibodies (Sigma-Aldrich, St Louis, MO). Expression of AMPK- $\gamma$ 2 (wild-type, AMP-sensitive [WT] or AMP/ADP-insensitive R531G mutant [RG]) was induced with tetracycline (1  $\mu$ g/mL) for 48 hours. To knockdown human AMPK $\alpha$ 1, the TriFECTa RNAi Kit, which contains 3 siRNAs specifically targeting human AMPK $\alpha$ 1, was purchased from IDT (Integrated DNA Technologies, Inc, Iowa). Cell transfection was carried out using LipofectAMINETM 2000 (Invitrogen) according to the manufacturer's instructions. The universal negative control siRNA (IDT) was used as scrambled control, and Western blotting was used to verify the expression of AMPK $\alpha$ 1.

### RNA Extraction and Real-Time Quantitative Reverse Transcription PCR (qPCR)

Total RNA was extracted using TRIzol reagent (Invitrogen) according to the manufacturer's instructions. Complementary DNA (cDNA) was synthesized using a reverse transcription reagent kit (Applied Biosystems, Foster City). The expression level of *FOXMI* was evaluated by qPCR in an ABI PRISM 7500 system (Applied Biosystems) using Taqman gene expression assays: human *FOXMI* (Assay ID: Hs00153543\_m1). Human *18S* rRNA (Assay ID: Hs99999901\_m1) was used as an internal control.

### Western Blot Analysis

Proteins in cell lysates were separated by 10% SDS-PAGE and transferred to polyvinylidene-difluoride membranes. The membranes were blotted with 5% skimmed milk and subsequently probed overnight at 4°C with primary antibodies specific for anti-p-AMPK $\alpha$ , anti-AMPK $\alpha$ 1, anti-AMPK $\alpha$ , anti-p-AKT, anti-AKT, anti-p-p70S6K, anti-p-mTOR, anti-mTOR (Cell Signaling, Beverly, MA), anti-p-ERK, anti-ERK, anti-FOXMI (Santa Cruz Biotechnology, Inc, Santa Cruz, CA), and anti- $\beta$ -actin (Sigma-Aldrich, St Louis, MO) and then incubated with horseradish peroxidase conjugated goat antirabbit

or antimouse secondary antibody (Amersham, Uppsala, Sweden). Immunodetection was performed with enhanced chemiluminescence reagent solution (Amersham ECL) and visualized by medical X-ray film.

### Cell Proliferation and Focus Formation Assays

An XTT cell proliferation kit (Roche, Basel, Switzerland) was used to measure cell viability according to the manufacturer's protocol. Three independent experiments were performed in triplicate. For focus formation assay, approximately 1000 to 3000 cells were cultured in each well of a 6-well plate and treated with different drugs. After incubation at 37°C in an incubator for 2 weeks, colonies were stained with crystal violet and counted.

### Wound Healing and Matrigel Cell Migration and Invasion Assays

For wound healing assays, an equal amount of cells was grown as a monolayer to 90% confluence in a 6-well plate. The cells were pretreated with 10  $\mu$ g/mL mitomycin C for 2 hours, and a wound was then scratched with a sterile 200  $\mu$ L pipette tip in each well. After washing each well with phosphate buffered saline (PBS), cells were treated with drugs and incubated at 37°C in a humidified, 5% CO<sub>2</sub> atmosphere. The width of each wound was monitored at specific time intervals, with the relative velocity of cell migration being calculated by dividing the width over time.

For Matrigel cell migration and invasion assays (Millipore), 300  $\mu$ L of cell suspension containing  $1 \times 10^6$  cells/mL in serum-free medium was added to each insert. The medium (500  $\mu$ L) containing 10% fetal bovine serum was added to the lower chamber as a chemoattractant. After 1 to 2 days, the migrated cells were stained and counted by microscopy.

### Fluorescence-Activated Cell Sorting

Cell cycle analysis was carried out to elucidate cell cycle arrest and apoptosis induced by AMPK activator or BME by means of propidium iodide staining and flow cytometry. Ovarian cancer cells were initially suspended in serum-free medium and subsequently seeded into 6-well plates at a density of  $0.5 \times 10^6$  viable cells per well. The cells were incubated overnight at 37°C in an incubator with a humidified atmosphere of 5% CO<sub>2</sub> and 95% air. The full medium together with either AMPK activator or BME was applied to the cells on the next day, and the plates were incubated overnight as before. Cell pellets were collected by centrifugation at 1500g for 5 minutes and fixed in cold 70% ethanol. The cells were analyzed by a flow cytometer (BD Biosciences), and the number of cells in each phase of the cell cycle was quantified by Modfit software.

## In Vivo Tumorigenicity Assay

To study the *in vivo* consequences of BME on tumor development,  $1 \times 10^6$  ovarian cancer cells ES2 were implanted subcutaneously into the right flank of 5-week old BALB/cAnN-nu female nude mice in groups of 5. Intraperitoneal administration of BME was, therefore, started to pretreat the mice for 2 days, and afterward cisplatin treatment was initiated every other day for a total of 6 injections. Treatment with BME was continued during cisplatin treatment. For the control group, PBS was injected intraperitoneally at the same times. The sizes of tumors were determined at the time of each injection utilizing a digital slide caliper and were evaluated using the following formula: Volume =  $[(\text{Width} + \text{Length}) \div 2]^3 \times \pi/6$ . All experimental procedures described in this report were submitted to and approved by The Committee on the Use of Live Animals in Teaching and Research (CULATR number: 2560-11) of the University of Hong Kong.

## Data Analysis

The Student *t* test was used to analyze parametric data, whereas the Mann-Whitney test was used for nonparametric data. A *P* value  $\leq .05$  was considered significant.

## Results

### BME Specifically Inhibits Ovarian Cancer Cell Growth

Given that a known AMPK activator such as metformin mediated growth inhibitory effects on human ovarian cancer cells (Supplementary Figure S2A, available at <http://ict.sagepub.com/supplemental>), we examined whether a potential natural AMPK activator, BME, could mediate the same effect. Several human ovarian cancer cell lines were treated with different dilutions (0%, 0.25%, 0.5, and 1%, v/v) of Chinese BME, so that the majority of the cells could maintain appropriate viability and their respective proliferation rates could be measured by XTT cell proliferation assay for 5 days. After BME treatment, growth of A2780cp ( $P \leq .05$ ), A2780s ( $P \leq .05$ ), C13\* ( $P < .05$ ), and OV2008 ( $P \leq .05$ ) cells was significantly inhibited from 20% to 87% compared with controls, but there was no significant effect on the proliferation of immortalized human ovarian surface epithelial (HOSE 17-1) cells (Figure 1A). In addition, focus formation assays showed that the number of colonies was markedly reduced by 30% and 70% in A2780cp and C13\* cells, respectively, whereas there was no effect using HOSE17-1 cells (Figure 1B). These results show that BME functions similarly to a known pharmacological activator of AMPK in attenuating cell growth of human ovarian cancer cells while having no cytotoxic effects on normal ovarian epithelial cells.

### BME Induces Cell Growth Arrest and Apoptosis in Ovarian Cancer Cells

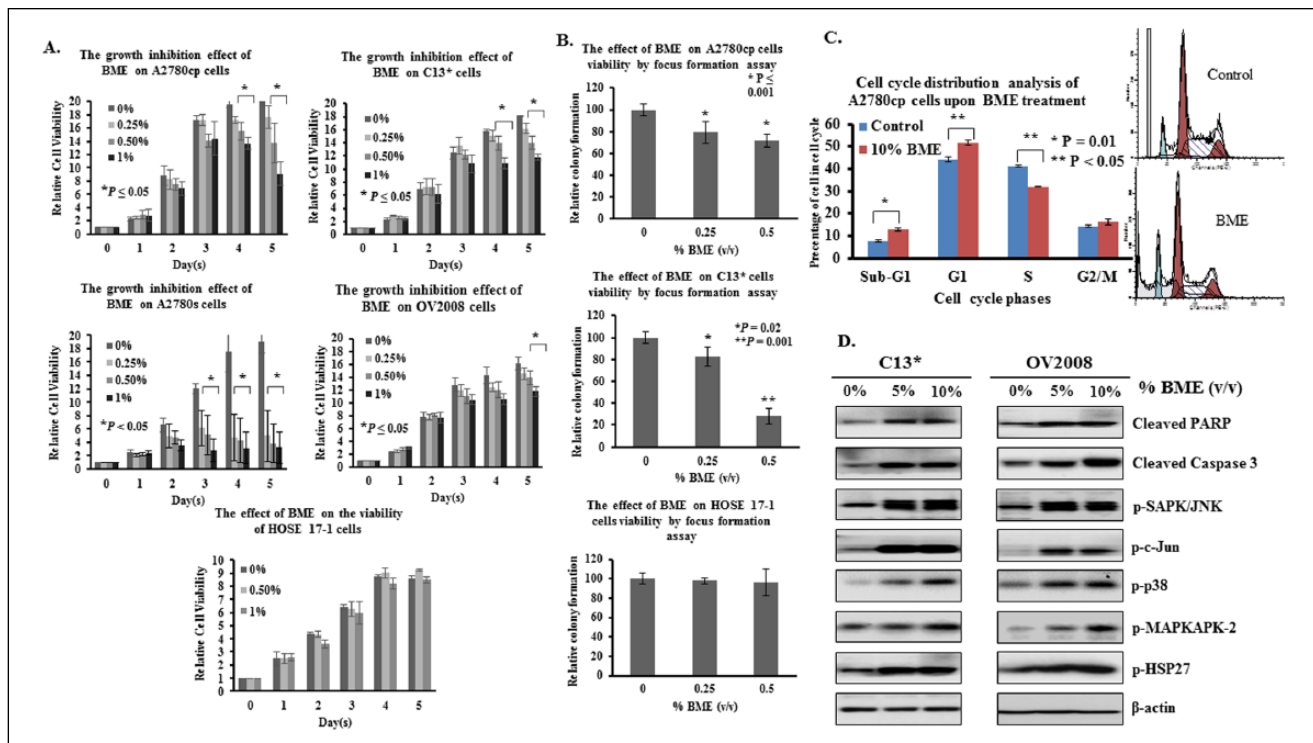
Because long-term inhibitory effects of BME on cell viability of human ovarian carcinoma cells were observed, we examined whether it modulates cell cycle progression and induces apoptotic cell death in a manner similar to known pharmacological activators of AMPK (Supplementary Figure S2B). Similar to metformin, treatment for 24 hours with 10% (v/v) Chinese BME of the ovarian cancer cell line A2780cp yielded a small but significant increase in cells arrested in the G1 phase and a decrease in cells in the S phase compared with untreated controls (Figure 1C). On the other hand, apoptotic cell death of A2780cp cells after BME treatment was also elevated, as indicated by the 40% increase in the sub-G1 cell content compared with untreated controls (Figure 1C). Furthermore, Western blot analysis demonstrated that treatment with 5% or 10% (v/v) Chinese BME increased cleavage of PARP and caspase 3, both markers of apoptosis, in both C13\* and OV2008 cells (Figure 1D). Additionally, 5% or 10% (v/v) Chinese BME enhanced the phosphorylation of SAPK/JNK, c-Jun, p38, MAPKAPK-2, and HSP27 in C13\* and OV2008 cells, suggesting that BME induced apoptosis in human ovarian cancer cells via intrinsic apoptotic mechanisms.

### BME Inhibits Migration and Invasion of Ovarian Cancer Cells

Previous studies have reported that activation of AMPK by AICAR or metformin not only inhibits cell proliferation but also retards cell migration,<sup>30,31</sup> which might further enhance its capacity for tumor suppression. Thus, it was of interest to determine whether BME impaired migration and invasion of human ovarian cancer cells. In this study, the ovarian cancer cell line SKOV3, a higher migratory cell line, was subjected to BME treatment. Wound healing assays showed that the wound closure rate of SKOV3 cells was significantly slowed by BME in a concentration-dependent manner, yielding 40% to 50% reduction of cell migration on treatment with 5% and 10% (v/v) Chinese BME (Figure 2A). In addition, transwell cell migration assays showed that around 50% reduction in cell migration of SKOV3 cells was caused by 5% or 10% (v/v) Chinese BME treatment, compared with untreated controls (Figure 2B). Moreover, transwell invasion assays showed that the number of cells that invaded through the matrigel was reduced by ~60% in SKOV3 cells treated with 10% BME (Figure 2C).

### BME Inhibits Tumor Growth of Ovarian Cancer Cells In Vivo

We next determined whether BME could impair tumor growth in a mouse xenograft tumor model. An interesting



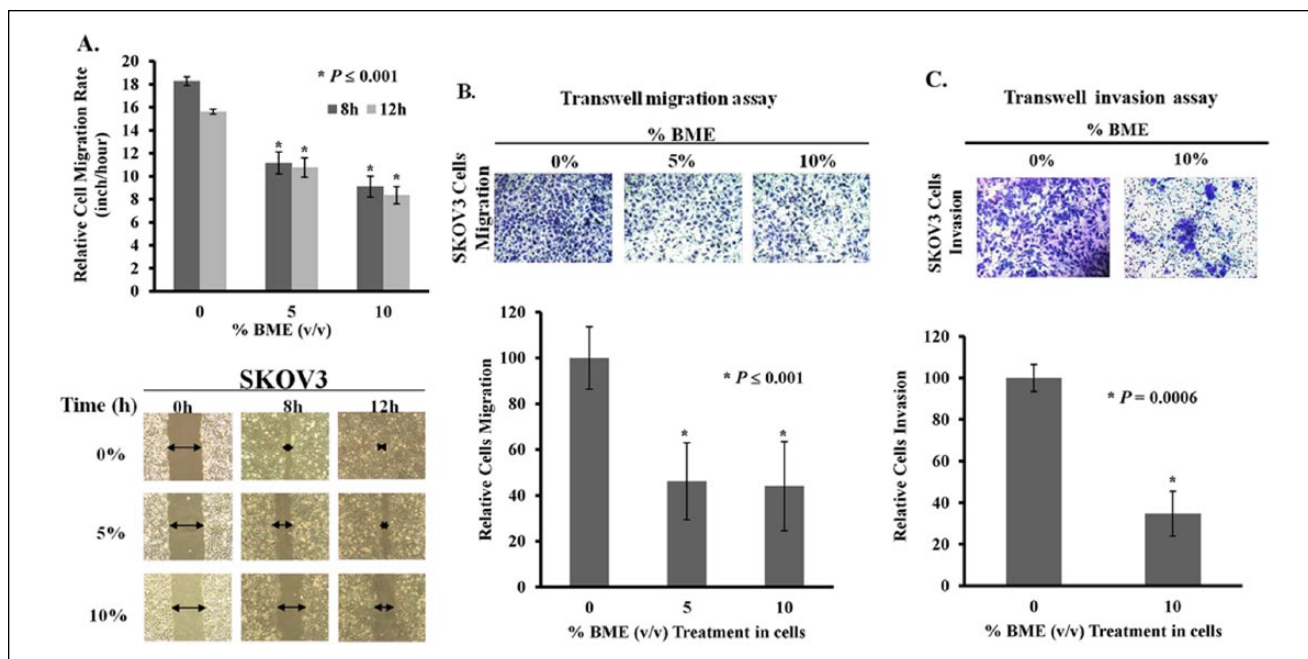
**Figure 1.** BME impairs cell growth and induces cell cycle arrest and apoptosis in ovarian cancer cells. (A) Concentration-dependent inhibition of cell proliferation in A2780cp ( $P \leq .05$ ), A2780s ( $P \leq .05$ ), C13\* ( $P < .05$ ), and OV2008 ( $P \leq .05$ ) cells treated with Chinese BME for 5 days was seen using XTT assays, whereas no inhibition was observed in HOSE cells. (B) Focus formation assay demonstrating a significant reduction of the number of colonies formed in A2780cp and C13\* cells treated with 0.25% and 0.5% (volume/volume [v/v]) Chinese BME, with no apparent inhibition of colony formation in HOSE cells. (C) Upper: A2780cp cells were rapidly treated with 10% (v/v) Chinese BME for 24 hours, and the extent of cell cycle arrest and apoptosis was estimated by propidium iodide-based flow cytometry. Lower: C13\* and OV2008 cells were treated with 5% and 10% (v/v) Chinese BME for 24 hours, and Western blot analysis was performed to examine the effects on cleavage of caspase 3 and PARP, and phosphorylation of SAPK/JNK, c-Jun, p38, MAPKAPK-2, and HSP27. Representative cropped blots are presented. Abbreviations: BME, extract of bitter melon; HOSE, human immortalized epithelial ovarian cells.

finding from a recent study was that Thai bitter ground fruits contained monofunctional phase II enzyme inducers that stimulated phase II enzymes and inhibited mono-oxygenase in rat liver, whereas a Chinese variety only contained bioactive compounds capable of affecting mono-oxygenase in rats.<sup>32</sup> Given the diverse effects exerted by different varieties of bitter melon, different varieties of BME may also have differing efficacies in inhibiting ovarian tumor growth. In this study, a highly metastatic ovarian cancer cell line, ES2, was inoculated subcutaneously into female nude mice, and when a palpable tumor was formed, 10% (v/v) BME from bitter melon of Taiwanese or Chinese varieties was administered intraperitoneally every 2 days, with a total of 6 injections. As shown in Figure 3A, Taiwanese and Chinese BME significantly suppressed tumor growth by 1.4- to 2-fold, respectively, compared with the PBS-treated controls. The tumor weights displayed 40% to 70% reductions on day 12 in the Taiwanese and Chinese BME-treated groups (Figures 3B and 3C). These findings are consistent with our *in vitro* tumor growth results and further support our notion

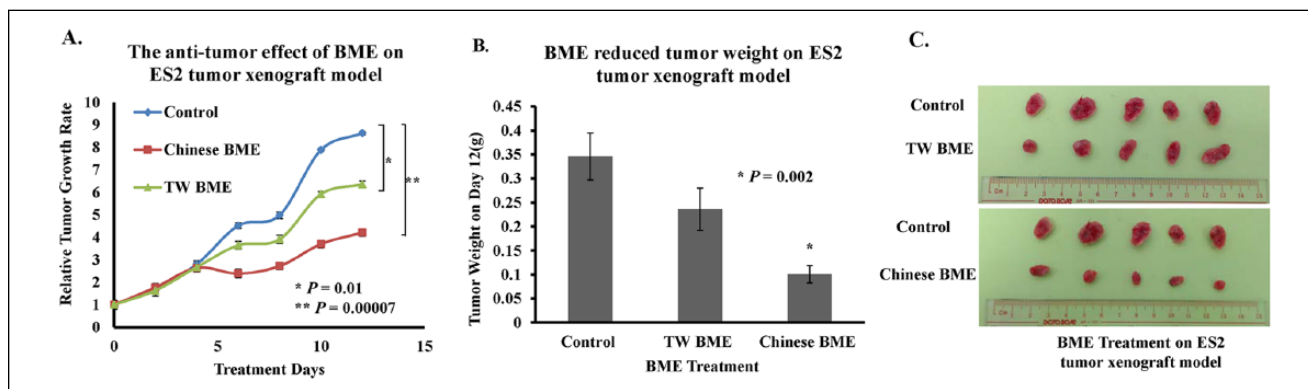
that different varieties of BME have strong suppressive capacity in ovarian cancer tumor growth *in vivo*.

### Different Varieties of Bitter Melon Have Different Capacities to Sensitize Ovarian Cancer Cells to Cisplatin/Taxol-Induced Cell Cytotoxicity

Despite the efficacy of platinum-based drugs such as cisplatin in killing cancer cells, development of cellular resistance to these drugs causes obstacles in the clinical management of the disease.<sup>33,34</sup> Recent evidence has indicated that pharmacological activators of AMPK such as metformin could enhance cisplatin-induced cell cytotoxicity.<sup>35</sup> Considering the speculation that BME acts as a potential natural AMPK activator that inhibits ovarian cancer cell growth, it was of interest to explore whether BME could enhance cisplatin-mediated cell cytotoxicity. In this study, two cisplatin-resistant cell lines, A2780cp and C13\*, were treated with Chinese BME and cisplatin. Treatment with either 0.5% to



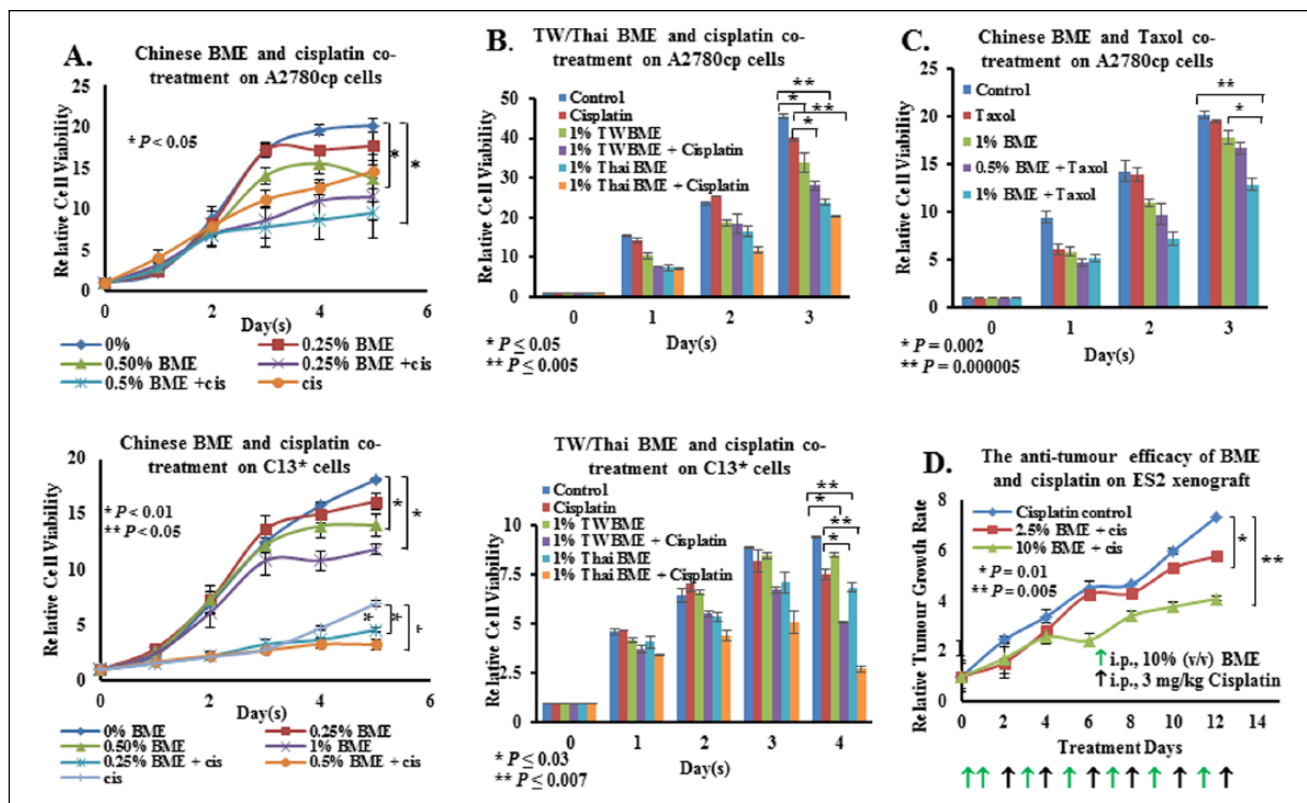
**Figure 2.** Bitter melon extract (BME) inhibits ovarian cancer cell migration and invasion. (A) Wound healing assays demonstrating that there was a marked retardation in wound closure rate of SKOV3 cells treated with 5% and 10% (v/v) Chinese BME compared with untreated controls over a time course of 12 hours ( $*P \leq .001$ ). The width of the wound is indicated by arrows in the photographs; 3 independent experiments were performed. (B) Transwell migration assay showed that SKOV3 cells with Chinese BME treatment (5% and 10%) exhibited a significant reduction in the number of cells penetrating through the membrane as compared with untreated controls ( $*P \leq .001$ ). (C) SKOV3 cells treated with Chinese BME (10%) showed less invaded cells through the matrigel as compared with the control ( $*P = .0006$ ). The numbers of migrated or invaded cells in 3 randomly chosen fields were counted for 3 independent experiments, and the normalized numerical data were presented in bar charts with error bars.



**Figure 3.** Bitter melon extract (BME) from different varieties of bitter melon displays significant antitumor effects in an ES2 xenograft mouse tumor model. (A) ES2 cells were subcutaneously injected into the right flank of female nude mice. On the seventh day after tumor cell injection, treatments with 10% (v/v) Taiwanese (TW) and Chinese BME (100  $\mu$ L) were initiated and carried on every other day, with a total of 6 injections. Treatment with 10% (v/v) TW ( $*P = .01$ ) and Chinese BME ( $**P = .00007$ ) in PBS resulted in a slower rate of tumor growth as compared with PBS-treated controls. The tumor volume of each group was measured for 12 days and expressed as the mean  $\pm$  SEM from 5 mice. (B) Chinese and Taiwanese BME markedly diminished (28%-71%) tumor weight, when compared with controls, on day 12. (C) Photographs illustrate that excised tumors from nude mice subcutaneously injected with ovarian cancer cell lines ES2 exhibited tumor stasis after BME injection, as evidenced by the smaller tumor sizes.

1% (v/v) BME was equivalent to a high dose of cisplatin (3  $\mu$ g/mL) in suppressing the cell proliferation of A2780cp and C13\* cells, whereas cotreatment with BME and cisplatin

further enhanced cisplatin-mediated cell cytotoxicity by  $\sim$ 2-fold (Figure 4A). Next, the effect of BMEs from 2 other varieties—that is, Taiwanese and Thai—on chemoresistance



**Figure 4.** BME synergistically enhanced cisplatin-mediated cell cytotoxicity of chemoresistant ovarian cancer cells. (A) XTT cell proliferation assay demonstrated that the growth rates of A2780cp and C13\* cells were significantly reduced after treatment with BME. The growth inhibitory effect was more obvious when cells were treated with BME plus cisplatin, rather than cisplatin or BME alone. (B) Different varieties of bitter melon—Taiwanese (TW) and Thailand (Thai)—when administered with cisplatin (1.5  $\mu\text{g}/\text{mL}$ ), exerted similar synergistic growth inhibitory effects on the viability of the chemoresistant ovarian cancer cell lines, A2780cp and C13\*. (C) BME could synergistically enhance cell cytotoxicity of taxol (1  $\text{ng}/\text{mL}$ ) in chemoresistant ovarian cancer cells. (D) BME displayed antitumor growth of an ES2 mouse xenograft tumor model. ES2 cells were inoculated subcutaneously in the right flank of female nude mice. On the seventh day of tumor cell injection, BME and cisplatin (3  $\text{mg}/\text{kg}$  body weight) were intraperitoneally injected into the nude mice on alternate days for a total of 6 injections each. BME administration not only significantly reduced tumor growth but also enhanced cisplatin-induced cytotoxicity, as evidenced by a smaller tumor size.

was examined. Treated with a lower concentration of cisplatin (1.5  $\mu\text{g}/\text{mL}$ ), there was only a slight inhibition of cell growth in both A2780cp and C13\* (Figure 4B). However, the cell growth of both cell lines was reduced by 18% to 30% on treatment with 1% (v/v) Taiwanese or Thai BME (Figure 4B). Cotreatment with either Taiwanese or Thai BME and cisplatin (1.5  $\mu\text{g}/\text{mL}$ ) further enhanced inhibition of cell growth by 40% to 50% compared with cisplatin alone, in both cell lines (Figure 4B). Interestingly, cotreatment with 1% (v/v) Chinese BME and taxol (1  $\text{ng}/\text{mL}$ ) also significantly inhibited A2780cp cell growth by 50%, compared with either treatment alone (Figure 4C).

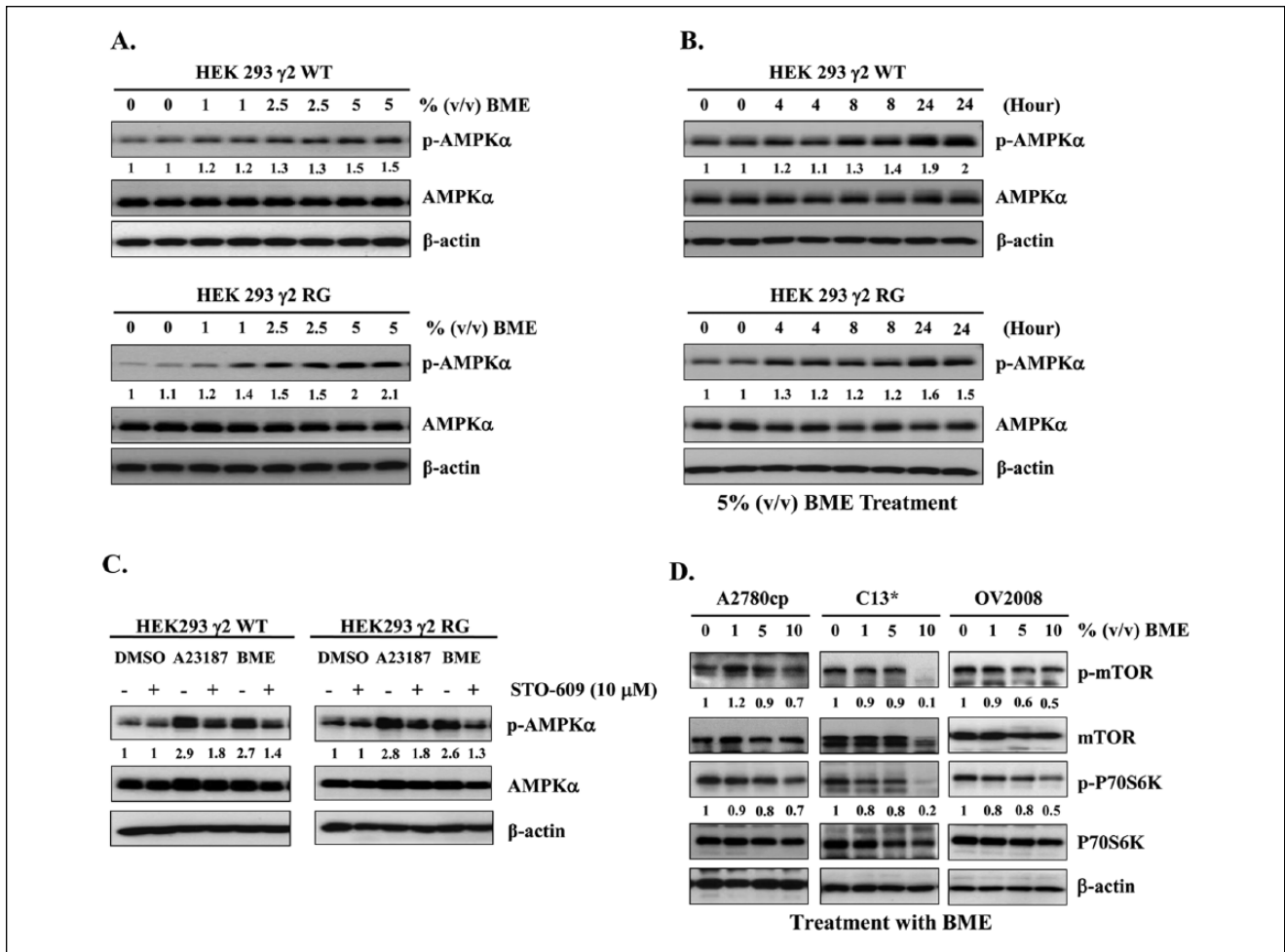
To further investigate whether BME enhanced cisplatin-induced cell cytotoxicity against ovarian cancer cells in an *in vivo* tumor model, ES2 tumor-bearing nude mice were intraperitoneally injected with Chinese BME (2.5% and 10%, v/v) and cisplatin (3  $\mu\text{g}/\text{kg}$ ) every alternate day for 12 days. Consistent with the *in vitro* data, BME further reduced,

in a dose-dependent manner, cisplatin-mediated tumor growth retardation by 25% to 50% compared with cisplatin alone (Figure 4D).

### BME Activates AMPK and Suppresses mTOR in an AMP-Independent Manner via the CaMKK $\beta$ Pathway

Many AMPK activators are secondary metabolites of plants that act as inhibitors of mitochondrial function, in which case AMPK activation is induced by increased cellular ratios of AMP to ATP or ADP to ATP and is accompanied by decreases in cellular oxygen uptake.<sup>36</sup> We studied the mechanism of activation of AMPK by BME using isogenic HEK293 cell lines expressing AMPK complexes containing either WT cells or RG cells. These were similar to cell lines constructed previously,<sup>36</sup> except that expression of the





**Figure 5.** BME functions as a natural CaMKK $\beta$ /AMPK activator, repressing mTOR signaling activity in an AMP-independent manner. (A) Western blot analysis revealed that phosphorylation of Thr172 on AMPK increased in response to Chinese BME (1%, 2.5%, and 5%, volume/volume [v/v]) in both WT and RG HEK-293 cells. Representative cropped blots are presented for the 2 groups. (B) As in (A) but showing a time course with 5% (v/v) BME. (C) A CaMKK $\beta$  inhibitor blocked BME-mediated Thr172 phosphorylation in WT and RG cells. Treatment with STO-609 (10  $\mu$ M) blocked Thr172 phosphorylation induced by BME and A23187 (2  $\mu$ M; 8 hours). Representative cropped blots are presented for the 2 groups. (D) Western blot analysis showing that the phosphorylation of mTOR and p70S6K was decreased in ovarian cancer cell lines—that is, A2780cp, C13\*, and OV2008—treated with 1%, 5%, and 10%, v/v Chinese BME for 24 hours. Representative cropped blots are presented.

Abbreviations: BME, bitter melon extract; CaMKK $\beta$ , Ca<sup>2+</sup>/calmodulin-dependent protein kinase- $\beta$ ; AMPK, AMP-activated protein kinase; WT, wild-type, AMP-sensitive AMPK- $\gamma 2$ ; RG, AMP/ADP-insensitive R531G mutant AMPK- $\gamma 2$ .

AMPK- $\gamma 2$  was tetracycline inducible because we have found that cells stably expressing the RG mutant are unstable and lose the mutant protein on repeated passaging (Supplementary Figure S3, available at <http://ict.sagepub.com/supplemental>). BME was similar to A23187 and increased Thr172 phosphorylation on AMPK in both WT and RG cells in a concentration- and time-dependent manner (Figures 5A and 5B), indicating that BME activates AMPK via an AMP-independent mechanism rather than by increasing cellular AMP or ADP (Supplementary Figure S3). AMPK can also be phosphorylated and activated in an Ca<sup>2+</sup>-dependent and AMP-independent manner by CaMKK $\beta$ ,<sup>37</sup> so

we examined whether CaMKK $\beta$  is involved in BME-mediated AMPK activation. Consistent with this, the cell-permeable CaMKK inhibitor STO-609 completely blocked Thr172 phosphorylation in response to the calcium ionophore A23187 (positive control) as well as BME in both WT and RG cells (Figure 5C). On the other hand, it is known that LKB1/AMPK signaling is one of the most well-known upstream regulators of mTOR signaling.<sup>38</sup> Previous findings from our laboratory have shown that activation of AMPK by agents such as metformin could inhibit ovarian cancer cell growth by repressing the mTOR signaling pathway.<sup>35</sup> As expected, Western blotting revealed that treatment of the ovarian cancer cell lines

A2780cp, C13\*, and OV2008 with 5% or 10% (v/v) Chinese BME for 24 hours yielded a marked reduction in phosphorylation of both mTOR (Ser2448) and its downstream target p70S6K (Ser371; Figure 5D). Collectively, these findings demonstrate that BME induces AMPK activation via the CaMKK $\beta$  pathway in an AMP-independent manner, whereas the activated AMPK then impairs cell growth and ovarian cancer cell metabolism, at least in part, via inhibition of mTOR signaling.

### BME Also Suppresses the AKT/ERK/FOXM1 Signaling Cascade

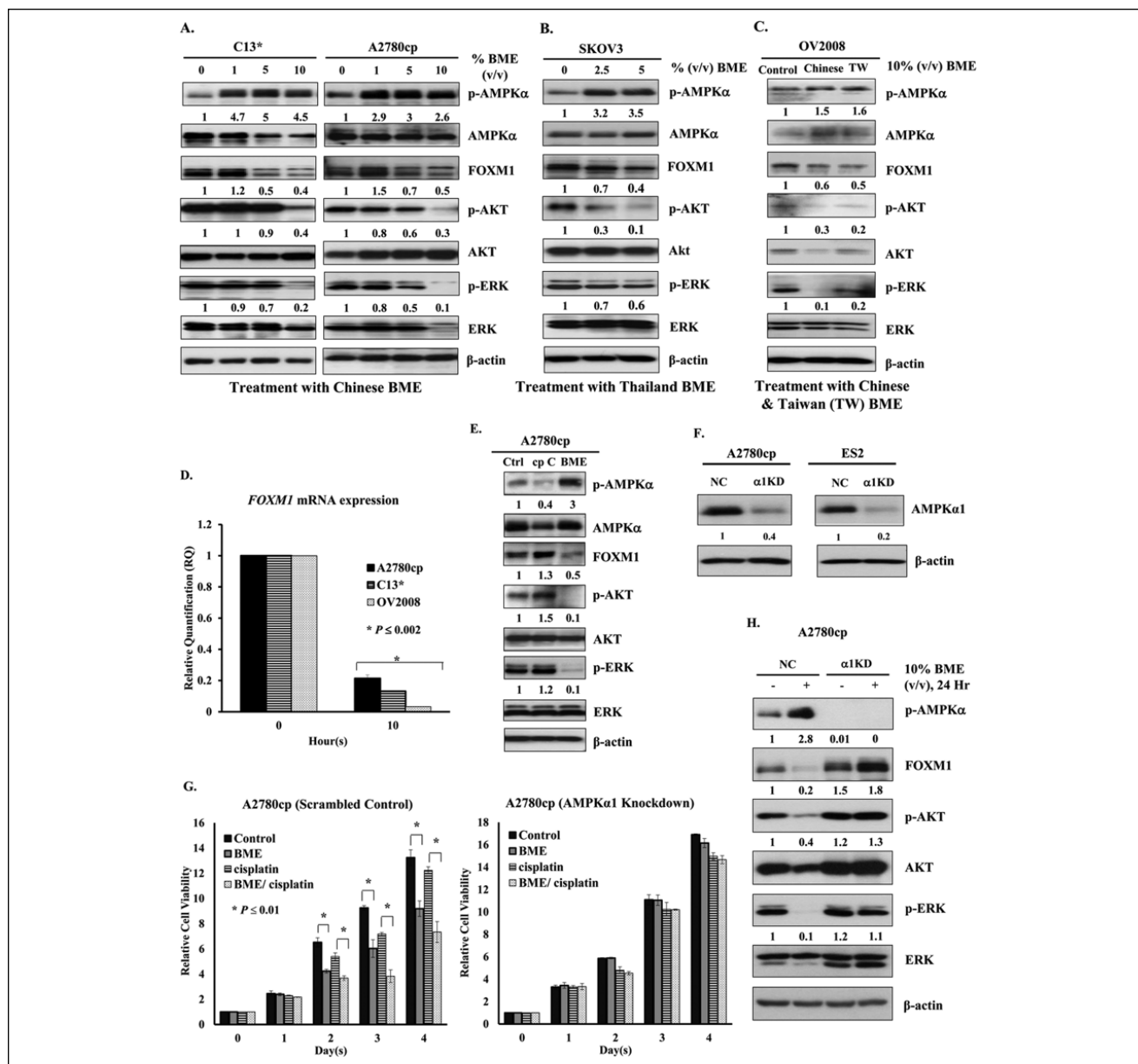
Our previous studies have shown that pharmacological AMPK activators such as A23187, AICAR, and metformin cause inhibition of human cervical cancer cell growth by repressing AKT/FOXO3a/FOXM1 signaling.<sup>19</sup> Similarly, these AMPK activators, as well as hypoxia, not only activated AMPK but also inhibited expression of FOXM1 in ovarian cancer cells (Supplementary Figure S4, available at <http://ict.sagepub.com/supplemental>). To test whether BME could mediate similar effects in human ovarian cancer cell lines, A2780cp and C13\* cells were treated with different concentrations and varieties of BME. After treatment with Chinese BME (1%, 5%, and 10%, v/v), the expression level of FOXM1 and phosphorylation of AKT (Ser473) and ERK decreased, whereas phosphorylation of AMPK at Thr172 was concomitantly elevated (Figure 6A). Similar effects were observed in SKOV3 and OV2008 cells treated with Thailand BME (2.5% and 5%, v/v; Figure 6B) or Taiwanese BME (10%, v/v; Figure 6C). Additionally, qPCR analysis demonstrated that the mRNA expression level of *FOXM1* in A2780cp, C13\*, and OV2008 cells was markedly reduced after treatment with BME (5%, v/v) for 10 hours (Figure 6D). To exclude off-target effects of AMPK activators, the AMPK inhibitor compound C was applied. After treatment with compound C (10  $\mu$ M), the expression of p-AMPK $\alpha$  (Thr172) was significantly attenuated, whereas the expression of FOXM1 and phosphorylation of AKT (Ser473) and ERK were moderately increased in A2780cp cells as compared with the control (Figure 6E). Thus, AMPK activation reduced the expression of FOXM1 at both the protein and mRNA levels via the AKT/ERK signaling cascade. To further demonstrate that BME causes growth inhibition of ovarian cancer cells through activation of the AMPK signaling pathway, the AMPK activity was specifically suppressed by siRNA-mediated knockdown of AMPK $\alpha$ . As expected, knockdown of AMPK $\alpha$ 1 (dominant isoform; Figure 6F) could significantly reduce the suppressive effect of Chinese BME (1%, v/v) on ovarian cancer cell growth (Figure 6G). It is important to note that the enhanced cancer cell growth mediated by cotreatment of Chinese BME (1%, v/v) and cisplatin (2  $\mu$ g/mL) was remarkably reduced in AMPK $\alpha$ 1 knockdown cells as compared with the scrambled

control in a cisplatin-resistant cell line, A2780cp (Figure 6G). Indeed, Western blot analysis confirmed that there was no reduction in the expression of FOXM1 and phosphorylation of AKT (Ser473) and ERK in A2780cp cells with AMPK $\alpha$ 1 knockdown cells after treatment with 10% (v/v) Chinese BME for 24 hours, as compared with the vector control (Figure 6H). These findings support our notion that activation of AMPK by natural AMPK activator BME suppresses the cell growth of ovarian cancer through suppressing the AKT/ERK/FOXM1 signaling cascade.

### Discussion

Bitter melon has been utilized as a hypoglycemic and anti-diabetic agent in Chinese and Indian Ayurvedic traditional medicine for hundreds of years.<sup>39</sup> Emerging evidence has suggested that many other dietary phytochemicals, such as resveratrol and curcumin have anticancer effects by targeting cancer cell metabolism,<sup>29,40</sup> and the antitumor activity of bitter melon has recently begun to attract attention.<sup>41</sup> For instance, the crude extract from the fruits of bitter melon induced cell cycle arrest and promoted apoptosis in adrenocortical cancer cells NCI H295R<sup>42</sup> and breast cancer cells MCF-7 and MDA-MB-231.<sup>29</sup> Additionally, leaf BMEs had been documented to impede the proliferation of rat prostate cancer cells PLS10.<sup>43</sup> These results suggest that BME not only has the ability to reduce cancer progression, but also has the potential to prevent ovarian cancer development. In this study, we confirmed the capacity of BME to suppress proliferation, migration, and invasion of ovarian cancer cells. Notably, BME showed no obvious toxicity in normal ovarian epithelial cells (HOSEs) or nude mice but enhanced the cytotoxicity of cisplatin in ovarian cancer cells, both *in vitro* and *in vivo*. It is important to note that our mechanistic studies are the first to show that BME differs from other xenobiotic AMPK activators, in that it activates AMPK in an AMP-independent manner through CaMKK $\beta$  signaling. Such BME-mediated AMPK activation significantly inhibits ovarian cancer cell growth by repressing both mTOR/P70S6K and AKT/ERK/FOXM1 cascades.

We and others have previously reported that pharmacological AMPK activators such as metformin impair cell proliferation of various human cancers.<sup>18,19,44</sup> In this study, we demonstrated that BME functions as a natural AMPK activator and executes both cytostatic and cytotoxic effects on ovarian cancer cells while not being toxic in normal immortalized ovarian epithelial cells (HOSEs) or nude mice (data not shown). Similar to metformin, BME induces cell cycle arrest and promotes apoptosis in ovarian cancer cells, causing arrest at the G0/G1 phase and increasing the sub-G1 population of apoptotic cells. Induction of apoptosis was also revealed by elevated expression of other apoptotic markers, such as cleavage of caspase 3 and PARP.



**Figure 6.** BME acts as a natural AMPK activator to repress FOXM1 expression via impairment of the AKT/ERK/FOXM1 signaling cascade. (A) Western blot analysis showing that the phosphorylation of Thr172 on AMPK was increased, whereas the levels of FOXM1 and the phosphorylation of AKT and ERK were reduced in ovarian cancer cell lines—that is, A2780cp and C13\*—treated with Chinese BME (1%, 5%, and 10%, volume/volume [v/v]) for 24 hours. Representative cropped blots processed in parallel are presented. (B) AMPK was activated after treatment of SKOV3 cells with Thai BME (2.5% and 5%, v/v). (C) Expression of FOXM1 was decreased significantly and phosphorylation of AKT and ERK was reduced after treatment of OV2008 cells with Taiwanese BME (10%, v/v). (D) qPCR analysis demonstrating that FOXM1 mRNA level of A2780cp, C13\*, and OV2008 cells was markedly reduced when treated with Chinese BME (5%, v/v) for 24 hours; 18S RNA was used as an internal control. (E) Suppression of AMPK activity relieves AMPK-mediated FOXM1 inhibition. Western blot analysis showing that AKT/ERK/FOXM1 signaling increased when A2780cp cells were treated by the AMPK inhibitor, compound C (10  $\mu$ M), whereas the level of AKT/ERK/FOXM1 signaling decreased when A2780cp cells were treated with Chinese BME (10%, v/v). Representative cropped blots are presented for the 2 groups. (F) Depletion of the endogenous AMPK $\alpha$ 1 ( $\alpha$ 1KD) by siRNA knockdown approach in ovarian cancer cell lines such as A2780cp and ES2; NC represents the scrambled control. (G) XTT cell proliferation assay demonstrated that the growth rate of A2780cp cells with AMPK $\alpha$ 1 knockdown was not suppressed by the treatment of BME (1%, v/v) as compared with the scrambled control. Additionally, the growth inhibitory effect was more obvious in A2780cp scrambled control cotreated with Chinese BME (1%, v/v) and cisplatin (2  $\mu$ g/mL), whereas there was no significant reduction of cell growth in AMPK $\alpha$ 1 knockdown A2780cp cells when cotreated with the same condition. (H) Western blot analysis showing that AKT/ERK/FOXM1 signaling slightly increased when AMPK $\alpha$ 1 knockdown A2780cp cells ( $\alpha$ 1 KD) were treated with/without Chinese BME (10%, v/v) for 24 hours, as compared with the scrambled control (NC). Abbreviations: BME, bitter melon extract; AMPK, AMP-activated protein kinase; qPCR, reverse transcription polymerase chain reaction.

Tumor metastasis and invasiveness are two very challenging issues for ovarian cancer patients. To address the functional role of BME in ovarian cancer metastasis, we examined its effect on ovarian cancer cell motility. Our findings clearly demonstrate that BME markedly suppresses cell migration and the invasive properties of ovarian cancer cells, suggesting that BME may possess not only antitumor but also antimetastatic function in ovarian cancer.

The differing abilities among the varieties of BME in suppressing ovarian cancer cell tumorigenicity and chemoresistance are another interesting finding in this study. Kusamran et al<sup>32</sup> have recently reported that Thai bitter melon contains more bioactive substances than the Chinese variety that inhibit some mono-oxygenases, displaying chemopreventive potential, indicating that the presence of anti-tumorigenic substances in BME may vary among different varieties. Indeed, numerous reports have documented that bitter melon contains many bioactive substances, nutrients, and phytochemicals, such as crude protein, minerals, and flavonoids, in leaves from different varieties and at different stages of maturity.<sup>45</sup> Hence, its ability to activate AMPK as well its antitumor activity may vary. Thus, cucurbitane-type triterpenoids,<sup>46</sup> kuguaglycoside C,<sup>47</sup> MAP30,<sup>41</sup> and kuguacin J<sup>48</sup> from bitter melon have all been shown to exhibit antitumor effects on various human cancer cells. It is important to note that recent studies have documented that triterpenoids (BMTs) such as BMT1 and BMT17 derived from BME possess the capacity for activation of AMPK.<sup>9,49</sup> An aglycone form of cucurbitane triterpenoid, cucurbitacin E, has been reported to induce autophagy in human cancer cells through upregulating AMPK activity.<sup>50</sup> Moreover, other triterpenoids such as momordicine I, momordicine II, kuguaglycoside G, and cucurbitacin I in bitter melon juice have also showed antitumorigenic effects on pancreatic carcinoma through activation of the AMPK pathway.<sup>51</sup> These studies suggest that there are potential bioactive substances in BME used as AMPK activators in antitumor application.

Many conventional AMPK activators such as metformin, berberine, resveratrol, and rosiglitazone are secondary plant metabolites or xenobiotics activating AMPK by suppressing mitochondrial function and thus increasing cellular AMP to ADP and ADP to ATP ratios.<sup>52,53</sup> In contrast, we are the first to demonstrate that BME activates AMPK in an AMP-independent manner because it triggered Thr172 phosphorylation equally in HEK293 cells stably, overexpressing either WT cells or RG cells.<sup>52</sup> Interestingly, frequent mutations and deletions of LKB1 are found in human cancers,<sup>54-56</sup> and our previous study demonstrated that loss of LKB1 reduced the efficacy of AMP- and LKB1-dependent activators such as AICAR in inhibiting tumor cell growth.<sup>57</sup> However, CaMKK $\beta$  provides an alternative pathway to activate AMPK in an LKB1-independent manner.<sup>58</sup> Using the WT and RG HEK293 cells, we provide convincing evidence that BME activates AMPK via CaMKK $\beta$ -dependent

signaling only; this has not been reported thus far. Recent evidence has shown that CaMKK $\beta$  is highly expressed and maybe used as a promising target for human cancers.<sup>59-61</sup> This may provide an advantage, in that BME will activate AMPK and suppress the mTOR signaling cascade even in tumor cells lacking LKB1. Furthermore, CaMKK $\beta$  is known to be expressed in host cells important in ovarian cancer, such as adipocytes.<sup>62</sup> Adipocytes in close proximity to ovarian cancer cells are thought to provide the latter with fatty acids, supporting the growth of the tumors.<sup>63,64</sup> It is possible that BME also activates AMPK in adipocytes, which is known to inhibit lipolysis,<sup>65,66</sup> and may, therefore, deprive the tumor cells of nutrients derived from these neighboring cells.

Accumulating evidence has shown that the upregulation of FOXM1 is involved in the development of various human cancers.<sup>67-71</sup> It is known that the aberrant activation of AKT and the increased expression of FOXM1 are remarkably associated with chemoresistance of human cancers.<sup>72,73</sup> Coincidentally, we have recently reported that pharmacological activators of AMPK are able to repress the cell growth of cervical cancer by targeting FOXM1 in an AKT/FOXO3a/FOXM1 signaling cascade.<sup>19</sup> In this study, BME has been shown to sensitize two cisplatin-resistant ovarian cancer cell lines, A2780cp and C13\*, to cisplatin-induced cytotoxicity. In our previous study<sup>74</sup> and the present one, we clearly demonstrated that the inhibitory effect of cisplatin resistance of ovarian cancer cells by BME is through the AKT/FOXM1 signaling cascade. Moreover, our results showed that activation of AMPK either by pharmacological activators, by hypoxic stress, or by BME all not only reduce mTOR expression but also FOXM1 expression by suppressing the AKT/ERK signaling pathway, thereby impairing growth and chemoresistance of ovarian cancer cells. It is hoped that this targeted therapy may be able to overcome the problem of chemoresistance in ovarian cancer.

## Conclusion

Our findings suggest that BME not only functions as a potential AMPK activator to prevent ovarian cancer progression and metastasis but could also be used as a supplement to enhance the efficacy of cisplatin-based chemotherapy in ovarian carcinoma. It is important to note that BME acts through a mechanism different from that of other pharmacological activators of AMPK and appears to be nontoxic; it may thus avoid side effects such as the lactic acidosis exhibited by AMPK activators that act by inhibiting mitochondrial function, such as metformin and phenformin.

## Acknowledgments

We thank Professor B. K. Tsang, Department of Obstetrics and Gynecology, University of Ottawa, Canada, for providing ovarian cancer cell lines A2780cp, A2780s, C13\*, and OV2008.

## Declaration of Conflicting Interests

The author(s) declared no potential conflicts of interest with respect to the research, authorship, and/or publication of this article.

## Funding

The author(s) disclosed receipt of the following financial support for the research, authorship, and/or publication of this article: This study was supported by Wong Cheek She Charitable Foundation and also Seed Funding Programme for Basic Research of The University of Hong Kong, Grant No. 201210159041 awarded to DWC. FAR and DGH were supported by a Senior Investigator Award from the Wellcome Trust (UK).

## References

1. Parmar MK, Ledermann JA, Colombo N, et al. Paclitaxel plus platinum-based chemotherapy versus conventional platinum-based chemotherapy in women with relapsed ovarian cancer: the ICON4/AGO-OVAR-2.2 trial. *Lancet*. 2003;361:2099-2106.
2. Laios A, O'Toole SA, Flavin R, et al. An integrative model for recurrence in ovarian cancer. *Mol Cancer*. 2008;7:8.
3. Al Rawahi T, Lopes AD, Bristow RE, et al. Surgical cytoreduction for recurrent epithelial ovarian cancer. *Cochrane Database Syst Rev*. 2013;(2):CD008765.
4. Siegel R, Ma J, Zou Z, Jemal A. Cancer statistics, 2014. *CA Cancer J Clin*. 2014;64:9-29.
5. Ali AY, Farrand L, Kim JY, et al. Molecular determinants of ovarian cancer chemoresistance: new insights into an old conundrum. *Ann N Y Acad Sci*. 2012;1271:58-67.
6. Limtrakul P, Pitchakarn P, Suzuki S, Kuguacin J, a triterpenoid from *Momordica charantia* linn: a comprehensive review of anticarcinogenic properties. In: Tonissen K, ed. *Carcinogenesis*. Rijeka, Croatia: INTECH; 2013:275-296.
7. Wang V, Li C, Lin M, et al. Ovarian cancer is a heterogeneous disease. *Cancer Genet Cytogenet*. 2005;161:170-173.
8. Kikkawa F, Nawa A, Ino K, Shibata K, Kajiyama H, Nomura S. Advances in treatment of epithelial ovarian cancer. *Nagoya J Med Sci*. 2006;68:19-26.
9. Iseli TJ, Turner N, Zeng XY, et al. Activation of AMPK by bitter melon triterpenoids involves CaMKKbeta. *PLoS One*. 2013;8:e62309.
10. Melchior WR, Jaber LA. Metformin: an antihyperglycemic agent for treatment of type II diabetes. *Ann Pharmacother*. 1996;30:158-164.
11. Ogunleye AA, Ogston SA, Morris AD, Evans JM. A cohort study of the risk of cancer associated with type 2 diabetes. *Br J Cancer*. 2009;101:1199-1201.
12. Evans JM, Donnelly LA, Emslie-Smith AM, Alessi DR, Morris AD. Metformin and reduced risk of cancer in diabetic patients. *BMJ*. 2005;330:1304-1305.
13. Fogarty S, Hardie DG. Development of protein kinase activators: AMPK as a target in metabolic disorders and cancer. *Biochim Biophys Acta*. 2010;1804:581-591.
14. Hardie DG, Ashford ML. AMPK: regulating energy balance at the cellular and whole body levels. *Physiology*. 2014;29:99-107.
15. Hardie DG. AMPK: a target for drugs and natural products with effects on both diabetes and cancer. *Diabetes*. 2013;62:2164-2172.
16. Shackelford DB, Shaw RJ. The LKB1-AMPK pathway: metabolism and growth control in tumour suppression. *Nat Rev Cancer*. 2009;9:563-575.
17. Faubert B, Boily G, Izreig S, et al. AMPK is a negative regulator of the Warburg effect and suppresses tumor growth in vivo. *Cell Metab*. 2012;17:113-124.
18. Kwan HT, Chan DW, Cai PC, et al. AMPK activators suppress cervical cancer cell growth through inhibition of DVL3 mediated Wnt/beta-catenin signaling activity. *PLoS One*. 2013;8:e53597.
19. Yung MM, Chan DW, Liu VW, Yao KM, Ngan HY. Activation of AMPK inhibits cervical cancer cell growth through AKT/FOXO3a/FOXO1 signaling cascade. *BMC Cancer*. 2013;13:327.
20. Kirpichnikov D, McFarlane SI, Sowers JR. Metformin: an update. *Ann Intern Med*. 2002;137:25-33.
21. Forrester MB. Adult metformin ingestions reported to Texas poison control centers, 2000-2006. *Hum Exp Toxicol*. 2008;27:575-583.
22. Yu Y, Zhang XH, Ebersole B, Ribnicky D, Wang ZQ. Bitter melon extract attenuating hepatic steatosis may be mediated by FGF21 and AMPK/Sirt1 signaling in mice. *Sci Rep*. 2013;3:3142.
23. Lavhale MS, Kumar S, Mishra SH, Sitasawad SL. A novel triterpenoid isolated from the root bark of *Ailanthus excelsa* Roxb (tree of heaven), AECHL-1 as a potential anti-cancer agent. *PLoS One*. 2009;4:e5365.
24. Sun C, Zhang M, Shan X, et al. Inhibitory effect of cucurbitacin E on pancreatic cancer cells growth via STAT3 signaling. *J Cancer Res Clin Oncol*. 2010;136:603-610.
25. Yasuda S, Yogosawa S, Izutani Y, Nakamura Y, Watanabe H, Sakai T. Cucurbitacin B induces G2 arrest and apoptosis via a reactive oxygen species-dependent mechanism in human colon adenocarcinoma SW480 cells. *Mol Nutr Food Res*. 2010;54:559-565.
26. Yanamandra N, Berhow MA, Konduri S, et al. Triterpenoids from *Glycine max* decrease invasiveness and induce caspase-mediated cell death in human SNB19 glioma cells. *Clin Exp Metastasis*. 2003;20:375-383.
27. Weng CJ, Chau CF, Chen KD, Chen DH, Yen GC. The anti-invasive effect of lucidenic acids isolated from a new *Ganoderma lucidum* strain. *Mol Nutr Food Res*. 2007;51:1472-1477.
28. Nerurkar PV, Lee YK, Nerurkar VR. *Momordica charantia* (bitter melon) inhibits primary human adipocyte differentiation by modulating adipogenic genes. *BMC Complement Altern Med*. 2010;10:34.
29. Ray RB, Raychoudhuri A, Steele R, Nerurkar P. Bitter melon (*Momordica charantia*) extract inhibits breast cancer cell proliferation by modulating cell cycle regulatory genes and promotes apoptosis. *Cancer Res*. 2010;70:1925-1931.
30. Stone JD, Narine A, Shaver PR, Fox JC, Vuncannon JR, Tulis DA. AMP-activated protein kinase inhibits vascular smooth muscle cell proliferation and migration and vascular remodeling following injury. *Am J Physiol Heart Circ Physiol*. 2013;304:H369-H381.

31. Ferla R, Haspinger E, Surmacz E. Metformin inhibits leptin-induced growth and migration of glioblastoma cells. *Oncol Lett.* 2012;4:1077-1081.
32. Kusamran WR, Ratanavila A, Tepsuwan A. Effects of neem flowers, Thai and Chinese bitter melon fruits and sweet basil leaves on hepatic monooxygenases and glutathione S-transferase activities, and in vitro metabolic activation of chemical carcinogens in rats. *Food Chem Toxicol.* 1998;36:475-484.
33. Pinto AL, Lippard SJ. Binding of the antitumor drug cis-diamminedichloroplatinum(II) (cisplatin) to DNA. *Biochim Biophys Acta.* 1985;780:167-180.
34. Lippard SJ, Hoeschele JD. Binding of cis- and trans-dichlorodiammineplatinum(II) to the nucleosome core. *Proc Natl Acad Sci U S A.* 1979;76:6091-6095.
35. Li C, Liu VW, Chan DW, Yao KM, Ngan HY. LY294002 and metformin cooperatively enhance the inhibition of growth and the induction of apoptosis of ovarian cancer cells. *Int J Gynecol Cancer.* 2012;22:15-22.
36. Hawley SA, Ross FA, Chevtzoff C, et al. Use of cells expressing gamma subunit variants to identify diverse mechanisms of AMPK activation. *Cell Metab.* 2010;11:554-565.
37. Hawley SA, Pan DA, Mustard KJ, et al. Calmodulin-dependent protein kinase kinase-beta is an alternative upstream kinase for AMP-activated protein kinase. *Cell Metab.* 2005;2:9-19.
38. Wullschlegel S, Loewith R, Hall MN. TOR signaling in growth and metabolism. *Cell.* 2006;124:471-484.
39. Yin J, Zhang H, Ye J. Traditional Chinese medicine in treatment of metabolic syndrome. *Endocr Metab Immune Disord Drug Targets.* 2008;8:99-111.
40. Khan N, Afaq F, Mukhtar H. Apoptosis by dietary factors: the suicide solution for delaying cancer growth. *Carcinogenesis.* 2007;28:233-239.
41. Fang EF, Zhang CZ, Wong JH, Shen JY, Li CH, Ng TB. The MAP30 protein from bitter melon (*Momordica charantia*) seeds promotes apoptosis in liver cancer cells in vitro and in vivo. *Cancer Lett.* 2012;324:66-74.
42. Brennan VC, Wang CM, Yang WH. Bitter melon (*Momordica charantia*) extract suppresses adrenocortical cancer cell proliferation through modulation of the apoptotic pathway, steroidogenesis, and insulin-like growth factor type 1 receptor/RAC-alpha serine/threonine-protein kinase signaling. *J Med Food.* 2012;15:325-334.
43. Pitchakarn P, Ogawa K, Suzuki S, et al. *Momordica charantia* leaf extract suppresses rat prostate cancer progression in vitro and in vivo. *Cancer Sci.* 2010;101:2234-2240.
44. Li C, Liu VW, Chiu PM, Yao KM, Ngan HY, Chan DW. Reduced expression of AMPK-beta1 during tumor progression enhances the oncogenic capacity of advanced ovarian cancer. *Mol Cancer.* 2014;13:49.
45. Popovich DG, Li L, Zhang W. Bitter melon (*Momordica charantia*) triterpenoid extract reduces preadipocyte viability, lipid accumulation and adiponectin expression in 3T3-L1 cells. *Food Chem Toxicol.* 2010;48:1619-1626.
46. Hsu C, Hsieh CL, Kuo YH, Huang CJ. Isolation and identification of cucurbitane-type triterpenoids with partial agonist/antagonist potential for estrogen receptors from *Momordica charantia*. *J Agric Food Chem.* 2011;59:4553-4561.
47. Tabata K, Hamano A, Akihisa T, Suzuki T. Kuguaglycoside C, a constituent of *Momordica charantia*, induces caspase-independent cell death of neuroblastoma cells. *Cancer Sci.* 2012;103:2153-2158.
48. Pitchakarn P, Suzuki S, Ogawa K, et al. Induction of G1 arrest and apoptosis in androgen-dependent human prostate cancer by kuguacin J, a triterpenoid from *Momordica charantia* leaf. *Cancer Lett.* 2011;306:142-150.
49. Cheng HL, Huang HK, Chang CI, Tsai CP, Chou CH. A cell-based screening identifies compounds from the stem of *Momordica charantia* that overcome insulin resistance and activate AMP-activated protein kinase. *J Agric Food Chem.* 2008;56:6835-6843.
50. Zha QB, Zhang XY, Lin QR, et al. Cucurbitacin E induces autophagy via downregulating mTORC1 signaling and upregulating AMPK activity. *PLoS One.* 2015;10:e0124355.
51. Kaur M, Deep G, Jain AK, et al. Bitter melon juice activates cellular energy sensor AMP-activated protein kinase causing apoptotic death of human pancreatic carcinoma cells. *Carcinogenesis.* 2013;34:1585-1592.
52. Hawley SA, Ross FA, Chevtzoff C, et al. Use of cells expressing gamma subunit variants to identify diverse mechanisms of AMPK activation. *Cell Metab.* 2010;11:554-565.
53. Hardie DG, Ross FA, Hawley SA. AMP-activated protein kinase: a target for drugs both ancient and modern. *Chem Biol.* 2012;19:1222-1236.
54. Ji H, Ramsey MR, Hayes DN, et al. LKB1 modulates lung cancer differentiation and metastasis. *Nature.* 2007;448:807-810.
55. Sanchez-Cespedes M. A role for LKB1 gene in human cancer beyond the Peutz-Jeghers syndrome. *Oncogene.* 2007;26:7825-7832.
56. Huang FY, Kwok YK, Lau ET, Tang MH, Ng TY, Ngan HY. Genetic abnormalities and HPV status in cervical and vulvar squamous cell carcinomas. *Cancer Genet Cytogenet.* 2005;157:42-48.
57. Yu SY, Chan DW, Liu VW, Ngan HY. Inhibition of cervical cancer cell growth through activation of upstream kinases of AMP-activated protein kinase. *Tumour Biol.* 2009;30:80-85.
58. Hawley SA, Pan DA, Mustard KJ, et al. Calmodulin-dependent protein kinase kinase-beta is an alternative upstream kinase for AMP-activated protein kinase. *Cell Metab.* 2005;2:9-19.
59. Lee CR, Chun JN, Kim SY, et al. Cyclosporin A suppresses prostate cancer cell growth through CaMKKbeta/AMPK-mediated inhibition of mTORC1 signaling. *Biochem Pharmacol.* 2012;84:425-431.
60. Rokhlin OW, Taghiyev AF, Bayer KU, et al. Calcium/calmodulin-dependent kinase II plays an important role in prostate cancer cell survival. *Cancer Biol Ther.* 2007;6:732-742.
61. Frigo DE, Howe MK, Wittmann BM, et al. CaM kinase kinase beta-mediated activation of the growth regulatory kinase AMPK is required for androgen-dependent migration of prostate cancer cells. *Cancer Res.* 2011;71:528-537.
62. Gormand A, Henriksson E, Strom K, Jensen TE, Sakamoto K, Goransson O. Regulation of AMP-activated protein kinase by LKB1 and CaMKK in adipocytes. *J Cell Biochem.* 2011;112:1364-1375.

63. Nieman KM, Romero IL, Van Houten B, Lengyel E. Adipose tissue and adipocytes support tumorigenesis and metastasis. *Biochim Biophys Acta*. 2013;1831:1533-1541.
64. Nieman KM, Kenny HA, Penicka CV, et al. Adipocytes promote ovarian cancer metastasis and provide energy for rapid tumor growth. *Nat Med*. 2011;17:1498-1503.
65. Garton AJ, Campbell DG, Carling D, Hardie DG, Colbran RJ, Yeaman SJ. Phosphorylation of bovine hormone-sensitive lipase by the AMP-activated protein kinase: a possible antilipolytic mechanism. *Eur J Biochem*. 1989;179:249-254.
66. Daval M, Diot-Dupuy F, Bazin R, et al. Anti-lipolytic action of AMP-activated protein kinase in rodent adipocytes. *J Biol Chem*. 2005;280:25250-25257.
67. Chan DW, Hui WW, Cai PC, et al. Targeting GRB7/ERK/FOXM1 signaling pathway impairs aggressiveness of ovarian cancer cells. *PLoS One*. 2012;7:e52578.
68. Teh MT, Wong ST, Neill GW, Ghali LR, Philpott MP, Quinn AG. FOXM1 is a downstream target of Gli1 in basal cell carcinomas. *Cancer Res*. 2002;62:4773-4780.
69. Madureira PA, Varshochi R, Constantinidou D, et al. The Forkhead box M1 protein regulates the transcription of the estrogen receptor alpha in breast cancer cells. *J Biol Chem*. 2006;281:25167-25176.
70. Douard R, Moutereau S, Pernet P, et al. Sonic Hedgehog-dependent proliferation in a series of patients with colorectal cancer. *Surgery*. 2006;139:665-670.
71. Chan DW, Yu SY, Chiu PM, et al. Over-expression of FOXM1 transcription factor is associated with cervical cancer progression and pathogenesis. *J Pathol*. 2008;215:245-252.
72. Carr JR, Park HJ, Wang Z, Kiefer MM, Raychaudhuri P. FoxM1 mediates resistance to herceptin and paclitaxel. *Cancer Res*. 2010;70:5054-5063.
73. Kwok JM, Peck B, Monteiro LJ, et al. FOXM1 confers acquired cisplatin resistance in breast cancer cells. *Mol Cancer Res*. 2010;8:24-34.
74. Lok GT, Chan DW, Liu VW, et al. Aberrant activation of ERK/FOXM1 signaling cascade triggers the cell migration/invasion in ovarian cancer cells. *PLoS One*. 2011;6:e23790.