



Standard PK/PD concepts can be applied to determine a dosage regimen for a macrolide: the case of tulathromycin in the calf

| | |
|-------------------------------|---|
| Journal: | <i>Journal of Veterinary Pharmacology and Therapeutics</i> |
| Manuscript ID | JVPT-2016-2282 |
| Manuscript Type: | Original Article |
| Date Submitted by the Author: | 19-Jan-2016 |
| Complete List of Authors: | Toutain, Pierre; Ecole Nationale Veterinaire de Toulouse, POTTER, Timothy Jonh; The Royal Veterinary College Pelligand, Ludovic; Royal Veterianry College, Veterinary Basic Sciences Lacroix, Marlene; Ecole National Veterinaire de Toulouse, Illambas, Joanna; The Royal Veterinary College Lees, Peter |
| | |

SCHOLARONE™
Manuscripts

View

1
2
3
4 **Standard PK/PD concepts can be applied to determine a dosage regimen for a**
5
6 **macrolide: the case of tulathromycin in the calf**
7

8
9 P.-L.Toutain^{1*}, T. Potter^{2#a}, L. Pelligand², M. Lacroix¹, J. Illambas^{2#b}, P. Lees²
10
11

12
13
14
15
16
17
18 ¹ *École Nationale Vétérinaire de Toulouse, UMR 1331 Toxalim INRA, 23, Chemin*
19 *des Capelles-BP 87614, 31076 Toulouse Cedex 03, France.*
20
21

22
23 ² *The Royal Veterinary College, Hawkshead Campus, Hatfield, Herts., AL9 7TA,*
24 *United Kingdom*
25
26

27
28 ^{#a} *Current address: Westpoint Veterinary Group, Dawes Farm, Bognor Road,*
29 *Warnham, Sussex, RH12 3SH, United Kingdom*
30
31

32
33 ^{#b} *Current address: Zoetis, Global Development & Operations, VMRD, Hoge Wei 10,*
34 *B-1930 Zaventem, Belgium*
35
36
37
38
39
40
41

42 **Corresponding author: Pierre-Louis Toutain*
43
44

45 E-mail to : pltoutain@wanadoo.fr Fax: +33 561 19 39 17
46
47

48 **Short running title: PK/PD for dosage regimen for tulathromycin in calf**
49
50

51 **Key words: Tulathromycin; PK/PD; dosage regimen; Monte Carlo simulation**
52
53
54
55
56
57
58
59
60

1 Abstract

2 The pharmacokinetic (PK) profile of tulathromycin, administered to calves
3 subcutaneously at the dose rate of 2.5 mg/kg, was established in serum, inflamed
4 (exudate) and non-inflamed (transudate) fluids in a tissue cage model. The PK profile
5 of tulathromycin was also established in pneumonic calves. For *Mannheimia*
6 *haemolytica* and *Pasteurella multocida*, tulathromycin Minimum Inhibitory
7 Concentrations (MIC) were approximately 50 times lower in calf serum than in
8 Mueller Hinton Broth. The breakpoint value of the PK/pharmacodynamic (PD) index
9 ($AUC_{(0-24h)}/MIC$) to achieve a bactericidal effect was estimated from *in vitro* time-kill
10 studies to be approximately 24 h for *M. haemolytica* and *P. multocida*. A population
11 model was developed from healthy and pneumonic calves and, using Monte Carlo
12 simulations, PK/PD cut-offs required for the development of Antimicrobial
13 Susceptibility Testing (AST) were determined. The population distributions of
14 tulathromycin doses were established by Monte Carlo Computation (MCC). The
15 computation predicted a Target Attainment Rate (TAR) for a tulathromycin dose rate
16 of 2.5 mg/kg of 66% for *M. haemolytica* and 87% for *P. multocida*. The findings
17 indicate that free tulathromycin concentrations in serum suffice to explain the efficacy
18 of single dose tulathromycin in clinical use, and that a dosage regimen can be
19 computed for tulathromycin using classical PK/PD concepts.

21 Introduction

22 Good clinical efficacy and bacteriological cure with macrolides in human and animal
23 medicine are commonly achievable with plasma/serum concentrations that are lower,
24 even much lower, than the *in vitro* MICs for major lung pathogens. This is the case

1
2
3 25 for tulathromycin (Nowakowski, Inskeep et al., 2004), gamithromycin (Huang,
4
5 26 Letendre et al., 2010) and tildipirosin (Menge, Rose et al., 2012), three agents of the
6
7 27 triamilide sub-class, licensed for farm animal use. Because of the disparity between
8
9 28 *in vivo* plasma concentration and *in vitro* MICs, the application of classical PK/PD
10
11 29 concepts to macrolides has frequently been challenged. This has led some authors
12
13 30 and regulatory authorities to claim that there is no plasma concentration-effect
14
15 31 relationship for macrolides. A corollary has been to propose that dosages for clinical
16
17 32 use can only be established in a clinical setting using a dose-titration approach.
18
19 33 However, an alternative to this view is to question the value and applicability of the *in*
20
21 34 *vitro* MIC data obtained in matrices optimized for bacterial growth, as for example in
22
23 35 Mueller Hinton Broth (MHB). This issue is addressed in this article.
24
25
26
27

28 36 To explain the clinical efficacy of macrolides at recommended dose rates,
29
30 37 alternatives to the PK/PD paradigm have been proposed. For example, many authors
31
32 38 have proposed that lung tissue concentration is more relevant than that in
33
34 39 plasma/serum, in determining outcome of treatment with macrolides. For
35
36 40 tulathromycin, the drug investigated in the present paper, lung homogenate
37
38 41 concentrations in pigs and calves were more than 50-fold higher than corresponding
39
40 42 plasma concentrations (Nowakowski, Inskeep et al., 2004; Villarino, Lesman et al.,
41
42 43 2013). However, it is now widely accepted that lung homogenate is not the biophase
43
44 44 for lung infections (Mouton, Theuretzbacher et al., 2008; Villarino, Brown et al., 2013;
45
46 45 Villarino, Lesman et al., 2013; Villarino, Lesman et al., 2013; Villarino, Brown et al.,
47
48 46 2014). The two pathogens considered in this article, *Pasteurella multocida* and
49
50 47 *Mannheimia haemolytica*, are strictly extracellular pathogens and pulmonary
51
52 48 epithelial lining fluid (PELF) is the main location for such extracellular organisms. In
53
54 49 some studies, PELF concentrations have exceeded the plasma non-protein bound
55
56
57
58
59
60

1
2
3 50 concentrations, leading to a view of the lung as a local drug “reservoir”, able to
4
5 51 control the local extracellular concentration. However, *in vivo* conditions are dynamic
6
7 52 and any (very slow) release of drug from the lung (very long half-life) would be
8
9 53 unable to maintain an effective local extracellular concentration. Consequently, the
10
11 54 lungs should, rather, be viewed not as a “reservoir” but as a “sump”. According to
12
13 55 Kiem and Schentag (Kiem & Schentag, 2008), it is the lysis of cells (containing high
14
15 56 drug concentrations) during the bronchoalveolar lavage procedure required to collect
16
17 57 PELF that explains high PELF drug concentrations. Therefore, these authors,
18
19 58 consider the high drug concentrations in PELF to be artefactual.
20
21
22
23

24 59 Many reports have shown that macrolides may accumulate in high concentrations in
25
26 60 neutrophils and macrophages (Scorneaux & Shryock, 1998; Scorneaux & Shryock,
27
28 61 1999; Villarino, Brown et al., 2013). Uptake by and subsequent off-loading of drug,
29
30 62 for example azithromycin, from these cells *in vivo* has been proposed as a
31
32 63 mechanism of drug delivery to the biophase (Gladue, Bright et al., 1989; Mandell &
33
34 64 Coleman, 2001; Bosnar, Kelneric et al., 2005). However, *in vivo* evidence to support
35
36 65 this hypothesis is entirely lacking and it may also be questioned on theoretical
37
38 66 grounds using mass balance considerations. Even assuming that the entire
39
40 67 circulating neutrophil pool is in the lung extracellular water (about 2×10^{11} cells
41
42 68 corresponding to a volume of 6mL for a 50kg calf) and also that the total macrolide
43
44 69 content is immediately released, the neutrophil pool would be unable to dynamically
45
46 70 control the local biophase concentration over the several days of the claimed
47
48 71 duration of drug efficacy. We conclude that it is most improbable that these cells can
49
50 72 be accorded the role of “truck-containing bullets off-loading their drug content” and
51
52 73 targeting the biophase, thereby achieving *in vivo* high local and sustained drug
53
54 74 concentrations (Toutain, 2009). This opinion is consistent with the fact that, using
55
56
57
58
59
60

1
2
3 75 microdialysis techniques, it has been shown that inflammation generally does not
4
5 76 increase local antimicrobial drug (AMD) concentrations (Muller, dela Pena et al.,
6
7 77 2004).

8
9
10 78 In light of the challenges to the applicability of the PK/PD paradigm to macrolides, the
11
12 79 aim of this study was to generate PK and PD data for tulathromycin for *M.*
13
14 80 *haemolytica* and *P. multocida* in calves to show that it is possible to establish
15
16 81 therapeutically relevant *in vivo* PK/PD relationships for a macrolide, as for any AMD
17
18 82 (Toutain, del Castillo et al., 2002; Toutain & Lees, 2004). More specifically, using a
19
20 83 population PK model of tulathromycin disposition, we have estimated PK/PD cut-offs
21
22 84 of tulathromycin to compare their Target Attainment Rate (TAR) with the current
23
24 85 clinical breakpoints (BP) used for Antimicrobial Susceptibility Testing (AST) in cattle.
25
26 86 Finally, using MIC distributions of *M. haemolytica* and *P. multocida*, we have
27
28 87 generated by Monte Carlo computation (MCC) the population distribution of the
29
30 88 tulathromycin doses to determine the corresponding TAR for the currently marketed
31
32 89 dose of 2.5 mg/kg. This has provided a comparison of results obtained using a
33
34 90 PK/PD approach with the dose derived from the dose titration approach.
35
36
37
38
39
40
41
42

43

92 **Materials and Methods**

93 **Animals and procedures**

44
45
46
47
48 94 This study was carried out in strict accordance with the recommendations in the
49
50 95 Guide for the Care and Use of Laboratory Animals of the National Institutes of
51
52 96 Health. The protocol was approved by the Ethics and Welfare Committee of the
53
54 97 Royal Veterinary College and the UK Home Office (Project License 70/6986) and all
55
56 98 efforts were made to minimize suffering.
57
58
59
60

99

100 A PK study was conducted in 10 healthy female Aberdeen Angus calves and 16
101 calves that were subjected to an experimental pulmonary infection. For healthy
102 calves, body weights were in the range 145-204 kg and ages ranged from 79-131
103 days. Tissue cages were implanted subcutaneously in the paralumbar fossa, under
104 general anesthesia, as described by Sidhu et al. (Sidhu, Shojaee Aliabadi et al.,
105 2003). Tulathromycin (Draxxin[®], Pfizer Animal Health, Sandwich, Kent, UK) was
106 injected subcutaneously into the flank at a dose rate of 2.5 mg/kg at zero time. Also
107 at zero time, 0.5 mL of 1% w/v sterile lambda carrageenan solution in saline
108 (Viscarin, Marine Colloids, Springfield, Ill, U.S.A.) was injected into a single tissue
109 cage. This cage was used to harvest exudate. A second, unstimulated cage was
110 used to collect non-inflammatory fluid (transudate).

111 A pneumonia model using *M. haemolytica* type A1; ref M 7/2 was used in 16 two-
112 week old Holstein Friesian bull calves. Upon arrival, animals were treated with a
113 single subcutaneous dose of florfenicol 40 mg/kg bodyweight (Nuflor, Schering-
114 Plough Animal Health, Middlesex, UK), to ensure freedom from sub-clinical
115 infections. Animals were weaned at 5-6 weeks of age, after which they were group
116 housed until the start of the study. The calves were 12-13 weeks of age at the
117 commencement of the study. A *M. haemolytica* inoculum containing $1.27-9.60 \times 10^9$
118 cfu/mL was used to induce pneumonia as previously described (Sarasola, Jernigan
119 et al., 2002).

120

121 Sampling procedures

122 For healthy calves, blood samples (10 mL volume) were collected, protected from
123 light, from a jugular vein, into vacutainers (Becton, Dickinson and Company, Oxford,
124 Oxon, U.K.) without anticoagulant, before and regularly up to 336 h after injection of
125 tulathromycin. Exudate and transudate samples (1.5 mL volume) were collected,
126 protected from light, before and regularly up to 336 h after dosing. All samples were
127 centrifuged (2000 g for 10 min at 4°C) and supernatants stored at -70°C prior to
128 assay for tulathromycin concentration and for measurement of *ex vivo* antibacterial
129 activity. For experimentally infected calves, blood samples were collected regularly
130 from time 0 to 48 h after injection of tulathromycin and samples were processed as
131 described for the healthy calves.

132

133 Analysis of tulathromycin in serum, exudate and transudate

134 Serum, exudate and transudate samples were assayed for tulathromycin, using a
135 tandem mass spectrometry method, adapted from Scheuch *et al.* (Scheuch, Spieker
136 *et al.*, 2007).

137 The methods were validated according to the published guideline (Committee for
138 medicinal products for human use (CHMP), 2011). Selectivity was checked for each
139 matrix. A quadratic model weighted by $1/X^2$ was selected over the calibration range
140 5-1000 ng/mL. Intra-day and inter-day precisions were less than 15% and the
141 accuracy ranged from 102 to 106%. The lower limit of quantification (LLOQ) was 5
142 ng/mL with a precision of 8% and an accuracy of 105%. The processed extracts of
143 tulathromycin were stable in the autosampler at room temperature for at least 24 h.

144

145 Pharmacokinetic-pharmacodynamic modelling of *in vitro* time-kill data

146 PK/PD modelling of *in vitro* time-kill data was undertaken to compute the BP value of
147 the PK/PD index ($AUC_{(0-24h)}/MIC$) selected to express tulathromycin *in vivo* activity
148 i.e. its bacteriostatic, bactericidal or 4 \log_{10} decrease in count potency. Data from
149 previously reported time-kill studies, using both MHB and calf serum as matrices,
150 were used for PK/PD modelling (see for details (Lees, Illambas et al., 2016)). Briefly,
151 six isolates each of the species *M. haemolytica* and *P. multocida* were investigated,
152 using tulathromycin concentrations corresponding to 0.25, 0.5, 1, 2 and 4 x multiples
153 of MIC. The bacterial growth, after 24 h incubation in the absence or presence of a
154 given tulathromycin concentration (expressed as \log_{10} cfu/mL subtracted from the
155 initial inoculum count \log_{10} cfu/mL), was measured as the response to the
156 tulathromycin *in vitro* activity (dependent variable); the ratios of $AUC_{(0-24h)}/MIC$ were
157 calculated for each isolate at each of the five tulathromycin concentrations tested and
158 these comprised the independent variable for fitting data to a sigmoidal E_{max} model to
159 estimate parameters of tulathromycin efficacy and potency (Equation 1).

$$160 \quad E = E_0 + \frac{E_{max} \times C^N}{EC_{50}^N + C^N} \quad (1)$$

161 where E is the bacterial growth for a given concentration of tulathromycin; E_0 is the
162 corresponding bacterial growth in the absence of drug (control samples); E_{max} (the
163 efficacy parameter) is the maximum antimicrobial growth inhibition determined as the
164 change in \log_{10} cfu/mL over 24 h incubation; EC_{50}^N (the potency parameter) is the
165 $AUC_{(0-24h)}/MIC$ value providing 50% of the maximum antibacterial effect; C (the
166 independent variable) is the concentration term (expressed as $AUC_{(0-24h)}/MIC$); and N
167 is the Hill coefficient. The $AUC_{(0-24h)}/MIC$ corresponding to a bacteriostatic effect

1
2
3 168 ($E=0$, no change from initial inoculum count), a bactericidal effect ($E=-3$, a $3\log_{10}$
4
5 169 reduction from initial inoculum count) or ($E=-4$ a $4\log_{10}$ reduction from initial inoculum
6
7 170 count) were computed by solving equation 1 for each isolate of each organism in
8
9 171 MHB and serum (Aliabadi & Lees, 2001; Lees, Shojaee Aliabadi et al., 2004).
10
11
12
13
14

172

173 **Pharmacokinetic analyses**

174 Tulathromycin concentration-time data in serum, exudate and transudate in individual
175 calves were analyzed using the WIN-NONLIN regression program (Pharsight
176 Corporation, Mountain View, CA, USA) submitted to non-compartmental analysis
177 using the statistical moment approach.

178 A more advanced population analysis was carried out with Phoenix (Phoenix
179 WinNonlin 6.3 and NLME1.2; Certara, L.P., St. Louis, MO, USA) to analyze
180 simultaneously the serum concentrations obtained from the 10 control calves and the
181 16 calves subjected to an experimental infection. The more specific goal of the
182 population analysis was to develop a basic model of tulathromycin disposition in
183 calves, in order to compute the PK/PD cut-off values that could be used
184 subsequently to select a clinical BP for an AST that will be adapted to the calf. As the
185 BP for any AST is always a single value (for a given species and a given pathogen) a
186 PK model including different co-variates was not required for this objective.
187 Nevertheless, we explored the health status (pneumonic vs. control calves) as a
188 relevant co-variate to assess the influence, if any, of an experimentally induced
189 pneumonia on tulathromycin disposition in the calf.

1
2
3 190 The selected structural model was a bi-exponential model for an extravascular route
4
5 191 of administration. The parameterisation was carried out in terms of macroconstants
6
7 192 corresponding to equation 2:
8
9

$$10 \quad Y(t) = A \times EXP(-\alpha \times t) + B \times EXP(-\beta \times t) - (A + B) \times EXP(-KA \times t) \quad (2)$$

11
12 194 Where A and B (ng/mL) are intercepts and Ka , $Alpha$ and $Beta$ are slopes (1/h) with
13
14
15 195 $Ka > alpha > beta$. The estimated fixed parameters (the thetas vector) are reported as
16
17 196 their typical values (tv). The second component of a mixed effect model is the
18
19 197 random component (random effect). The Between Subject Variability (BSV) was
20
21 198 modeled using an exponential model of the form:
22
23

$$24 \quad \theta_i = \theta_1 \times EXP(\eta_i) \quad (3)$$

25
26
27 200 where θ_i is the value of theta in the i^{th} animal, θ_1 is the typical population value of
28
29 201 this theta and η_i , the deviation (noted eta) associated to the i^{th} animal from the
30
31 202 corresponding theta population value. The distribution of the etas was assumed to
32
33 203 be normal with a mean of 0 and a variance ω^2 .
34
35
36
37 204

38
39 205 A full covariance matrix of the etas was estimated. From the diagonal of this matrix,
40
41 206 formed by the variance terms in the log-domain, we estimated the BSV using
42
43 207 equation 4 which converts the variance to a coefficient of variation (CV%) in the
44
45 208 original scale.
46
47

$$48 \quad CV(\%) = 100 \times \sqrt{EXP(\omega^2) - 1} \quad (4)$$

49
50
51
52 210 The full matrix of the etas was used for the subsequent Monte Carlo simulations.
53
54
55
56
57
58
59
60

1
2
3 211 The residual model which reflects unexplained variability after controlling for other
4
5 212 sources of variability (analytical imprecision, departure from the model) was a
6
7 213 multiplicative (proportional) model with ε the error term having a mean of 0 and a
8
9 214 variance σ^2 .

11
12 215 Parameter estimation with associated standard errors (SE), as a measure of the
13
14 216 precision of the estimation, was based on minimizing an objective function value
15
16 217 using maximum likelihood estimation. A Quasi-Random Parametric Expectation
17
18 218 Maximization (QRPEM) was selected for this estimation. Shrinkage of random effects
19
20 219 towards the means was calculated for the η s and ε , allowing use of Empirical
21
22 220 Bayes Estimates -based diagnostic (Karlsson & Savic, 2007).

23
24
25
26 221 Monte Carlo simulations with the basic model were performed to generate 1,040 data
27
28 222 sets from 0 to 336 h with a step of 6 h. These simulated serum tulathromycin
29
30 223 concentration profiles were used to determine the PK/PD cut-off values and the
31
32 224 distribution of the apparent clearance, which was used for the population dose
33
34 225 computation.

35 36 37 38 39 40 41 227 **Population Dosage prediction**

42
43 228 The adequacy of the current dosage of tulathromycin (2.5 mg/kg) was explored by
44
45 229 computing population doses covering different TAR i.e. different percentages of the
46
47 230 population to assess the ability of a PK/PD model to validate or not the current dose
48
49 231 for tulathromycin. For AMDs for which the PK/PD index that best predicts efficacy is
50
51 232 $AUC_{(0-24h)}/MIC$, the following equation can be used (Equation 5).

52
53
54
55
56 233
$$Dose_{(for\ 10\ days\ of\ activity)} = \frac{Cl_{for\ 10\ days} \times SF \times MIC_{distribution}}{fu \times F} \quad (5)$$

1
2
3 234 Where $Dose$ is the amount of AMD to be administered to guarantee an activity of
4
5 235 tulathromycin over 10 days for a given TAR (see Discussion for the selection of this
6
7 236 10 days duration); $Cl_{for\ 10\ days}$ is the population distribution of the apparent plasma
8
9
10 237 clearance (Cl/F) as obtained in our population PK analysis; SF is a scaling factor
11
12 238 without units, obtained by dividing the BP value of the PK/PD index i.e. $AUC_{(0-24h)}$
13
14 239 $/MIC$, by 24 h, permitting computation of a SF of 1 for the present analysis; this
15
16 240 indicates that, to achieve a bactericidal action, the average serum concentration of
17
18 241 tulathromycin should be equal to the MIC (see (Toutain, Bousquet-Melou et al., 2007)
19
20 242 for further explanation on derivation of the SF from $AUC_{(0-24h)}/MIC$); f_u is the free
21
22 243 drug fraction (Anonymous, 2005) (the binding to serum protein is low, with the bound
23
24 244 fraction ranging from 0.32 to 0.39 in cattle) and we incorporated in equation 5 f_u as
25
26 245 a uniform distribution between 0.61 and 0.68. For the MIC distributions, the results of
27
28 246 a survey kindly provided by J. Watts (Zoetis) giving the MIC distribution of *P.*
29
30 247 *multocida* and *M. haemolytica* from the years 2004 to 2010, obtained in artificial
31
32 248 broth, were used. We first selected all the MICs equal to or less than the BP
33
34 249 proposed by the CLSI i.e. 16 $\mu\text{g}/\text{mL}$; this value is, according to CLSI, the susceptible
35
36 250 pathogen population that clinically can be successfully treated with tulathromycin and
37
38 251 that should therefore be considered to compute a dose. The percentage of
39
40 252 susceptible pathogens was 89.82% and 91.11% for *M. haemolytica* (n=2233 strains)
41
42 253 and *P. multocida* (n=2483 strains), respectively. The MHB MICs were then
43
44 254 transformed into vectors of equivalent MICs in serum by dividing all reported MICs
45
46 255 by a factor of 50 i.e. by the SF previously determined when comparing MICs in the
47
48 256 two matrices (Lees, Illambas et al., 2016).
49
50
51
52
53
54
55
56
57
58
59
60

1
2
3 258 Dosage distribution was computed using MCC (n=5000) in Oracle Crystal Ball
4
5 259 (Oracle Corporation, Redwood Shores, CA, USA) and the range of TAR from 0 to
6
7 260 90% of cases for which a range of dose levels are able to achieve an average serum
8
9 261 concentration equal to the MIC over the 10 days. The dose level corresponding to a
10
11 262 TAR of 90% was considered as the population dose of tulathromycin, given the
12
13 263 actual susceptible MIC distribution and assuming activity duration of 10 days. Finally,
14
15 264 a sensitivity analysis was carried out to apportion the overall variability of the dose
16
17 265 distributions either to the PK variables (clearance, fu) or to the PD variability (MIC).
18
19 266 Figure 1 gives a flowchart of the different steps for data collection and analysis.
20
21
22

23 **Fig.1**
24
25
26

269 **Statistical analyses**

270 PK variables are presented as geometric, harmonic or arithmetic means, as
271 appropriate, and SEM. Mean differences in $AUC_{(0-24h)}/MIC$ ratios determined in MHB
272 compared with those determined in serum for bacteriostatic, bactericidal and $4\log_{10}$
273 reductions in count were compared by ANOVA.
274

275 **Results**

276 **Calf *in vivo* study**

277 ***Tulathromycin concentrations in serum, exudate and transudate (NCA analysis)*** 278

279 The mean (+SEM) concentrations of tulathromycin are presented in Fig. 2 (serum, 0-
280 15 h) and Fig. 3 (serum, exudate and transudate, 0-336 h). Maximum concentration
281 (C_{max}) of tulathromycin (0.69 $\mu\text{g/mL}$) was often observed at the first sampling time (10
282 min). Concentrations exceeded 0.40 $\mu\text{g/mL}$ up to 12 h and were still quantifiable

1
2
3 283 (mean = 0.025 µg/mL) at 336 h. Serum terminal half-life was 84.0 h and mean
4
5 284 residence time (MRT) was 91.4 h (Table 1).
6

7 **Fig. 2**

8
9 **Fig. 3**

10
11
12 287

13
14
15 288 Penetration of tulathromycin into and clearance from carrageenan-induced exudate
16
17 289 and transudate were dissimilar. Concentrations (C_{max}) and areas under curves
18
19 290 ($AUC_{(0-last)}$) were higher in exudate than in transudate; 0.24 and 0.12 µg/mL for C_{max}
20
21 291 ($P<0.05$) and 18.4 and 8.58 µg.h/mL for $AUC_{(0-last)}$ ($P<0.05$). More importantly, for
22
23 292 both non-vascular fluids concentrations and areas were lower than in serum at all
24
25 293 sampling times, $P<0.01$ (for serum C_{max} = 0.75 µg/mL and $AUC_{(0-last)}$ = 45.1 µg.h/mL)
26
27 294 indicating a lack of tulathromycin accumulation in an inflammatory fluid compared to
28
29 295 serum (see discussion). However, mean values of MRT were similar for all three
30
31 296 fluids, indicating that a state of equilibrium was achieved between the tissue cages
32
33 297 and serum.
34
35
36
37
38
39
40

41 **Pharmacokinetic-pharmacodynamic surrogates**

42
43 300 PK/PD integration established the surrogates, C_{max}/MIC , $T>MIC$, $AUC_{(0-24h)}/MIC$ and
44
45 301 $AUC_{(0-\infty)}/MIC$ for tulathromycin, derived from *in vivo* concentrations in the PK study
46
47 302 ($n=10$) and *in vitro* MICs ($n=6$ for each species) measured in serum. Based on the
48
49 303 geometric mean serum MICs of 0.04 µg/mL for both *P. multocida* and *M.*
50
51 304 *haemolytica*, C_{max}/MIC (18.75 ± 0.11), $AUC_{(0-24h)}/MIC$ ($238\pm 5.8h$), $AUC_{(0-\infty)}/MIC$ ratios
52
53 305 ($1198\pm 6.3h$) and $T>MIC$ ($281\pm 17.5h$) indicated that serum concentrations of
54
55
56
57
58
59
60

1
2
3 306 tulathromycin would be predicted to have a high level of activity against the six
4
5 307 strains each of *P. multocida* and *M. haemolytica* investigated.
6
7

8 308 **In vitro PK/PD modelling to establish the breakpoint value of $AUC_{(0-24h)}/MIC$**

9
10 309 The BP value of the PK/PD index was required to compute a dose (SF of equation
11
12 310 5); for both *M. haemolytica* and *P. multocida* geometric mean MIC values were 2.07
13
14 311 $\mu\text{g/mL}$ ($n = 6$ per species) in MHB and 0.04 $\mu\text{g/mL}$ ($n = 6$) in calf serum (Lees,
15
16 312 Illambas et al., 2016). For both matrices and both organisms, the *in vitro* time-kill data
17
18 313 provided typical BP estimates of $AUC_{(0-24h)}/MIC$ required to produce, after 24 h
19
20 314 exposure, three levels of growth inhibition (Table 2). A strong bactericidal effect was
21
22 315 observed with a steep concentration-effect relationship. For both *M. haemolytica* and
23
24 316 *P. multocida* $AUC_{(0-24h)}/MIC$ values providing a $3\log_{10}$ reduction in count were
25
26 317 approximately 24 h in both serum and MHB. The same result expressed in term of
27
28 318 multiples of MIC was approximately 1 and we selected for the MCS an overall
29
30 319 average BP of 24 h for the PK/PD index (*i.e.* a SF equal to 1 in equation 5).
31
32
33
34
35

36 320 The reported AUC/MIC values (in h) are proportionality factors between the
37
38 321 experimental MIC (MIC_{exp}) and the average MHB or the average serum
39
40 322 tulathromycin concentration to achieve a bacteriostatic or a bactericidal effect e.g.
41
42 323 the $AUC_{(0-24h)}/MIC$ of 17.15 h providing a bacteriostatic effect in MHB indicates that
43
44 324 the corresponding average concentration over 24 h in MHB was
45
46 325 $17.15\text{h}/24\text{h}=0.71$ times the MIC and that the bactericidal effect in serum was obtained
47
48 326 with a concentration of $38.44\text{h}/24\text{h}$ or 1.6 times the MIC.
49
50
51

52 327
53
54
55
56
57
58
59
60

328 Population analysis

329 Figure 4 shows the Visual Predictive Check (VPC) *i.e.* the observed serum
330 concentration (ng/ml) vs. time (h) and observed and predicted quantiles; this is the
331 most useful diagnostic plot for the assessment of model adequacy. Typical values of
332 the primary structural parameters of the model (thetas), the secondary parameters
333 (AUC and half-life), their associated Standard Error (SE) and the SD of the residual
334 for the basic model are given in **Table 3**; for all calves, the *t_v* of the terminal half-life
335 was 84.8 h (CV 4.8%) and the *t_v* of the population AUC was 46,291 ng*h/mL (CV
336 11.5%) *i.e.* very similar values to those computed by the NCA with the 10 control
337 calves. The estimates of shrinkage were relatively small or moderate and provided
338 support for the reliability of the estimates of the random effects. Coefficient of
339 variation (CV%) of the variance of the etas expressing the BSV are given in Table 4.
340 They were relatively large for A, alpha and Ka and the inclusion in the model of the
341 covariate health status largely reduced these CV% (**Table 4**).

342 A and B (ng/mL) are intercepts and Ka, Alpha and Beta are slopes (1/h) with
343 $Ka > \alpha > \beta$. CV% was the standard error percentage calculated as $100 * SE /$
344 $Parameter\ Value$ indicating the reliability of the model. Proportional residual error
345 was 24.5% and the epsilon shrinkage was 0.05375.

346 **Fig.4**

347
348 Using the basic structural model, the serum disposition curves (Individual Predicted
349 values based on individual ETAs) of 1,040 calves were simulated (serum
350 concentrations predicted from time 0 to 336 h with a step of 6 h). These 1,040
351 simulations were subjected to a NCA, and partial areas (from 0 to 24h, 0 to 48h...up
352 to 0 to 240h) were computed; then the corresponding mean serum concentrations

1
2
3 353 over these time intervals were calculated. Next, the corresponding quantiles (5 to
4
5 354 95%) were established (Table 5). These serum concentrations can be viewed as the
6
7 355 PK/PD cut-offs for these time intervals and for a selected TAR. For example, if the
8
9 356 claimed duration of tulathromycin activity is 240 h and if a TAR of 90% is expected,
10
11 357 the PK/PD cut-off is 83 ng/mL, indicating that for 90% of the calves it can be
12
13 358 guaranteed that the average serum concentration of tulathromycin will be at least 83
14
15
16 359 ng/mL over the first 10 days following tulathromycin administration at the nominal
17
18 360 dosage of 2.5mg/kg. As the ratio of MIC obtained in MHB:serum is approximately
19
20 361 50:1, the PK/PD cut-off for a TAR of 90% for an expected duration of activity of 240 h
21
22 362 is 4.15 µg/mL for MHB, a value lower than the current clinical breakpoint of CLSI (16
23
24 363 µg/mL) (Lees, Illambas et al., 2016) but consistent with EMEA opinion (Committee for
25
26 364 medicinal products for veterinary use (CVMP), 2003) (see Discussion).
27
28
29
30
31

32 366 **Dosage computation**

33
34 367 From the MCS, using parameters of the basic model, the corresponding 1,040
35
36 368 apparent serum clearance values were computed ($\text{Dose}/\text{AUC}_{(0-\text{inf})}$) with Dose = the
37
38 369 standard tulathromycin dose of 2.5mg/kg. The distribution of these 1,040 serum
39
40 370 clearances (L/kg/day) was right-skewed and this distribution was normalized by a log
41
42 371 transformation (log of the mean clearance of 0.287 and SD of 0.53252). The mean
43
44 372 clearance for the 10 days selected for solving equation 5 was 2.589 in the LN
45
46 373 domain. The distribution of MICs, after transformation by a scaling factor of 50 to take
47
48 374 into account the serum effect, is presented in Figure 5.
49
50

51
52 375 Figures 6 and 7 illustrate the non-cumulative and cumulative distributions of doses
53
54 376 for *M. haemolytica* and *P. multocida*, respectively. For a TAR of 90%, the computed
55
56 377 dose for *M. haemolytica* was 5.3mg/kg, indicating that, with this dose, the average
57
58
59
60

1
2
3 378 serum concentration of tulathromycin over the first 240 h following administration of
4
5 379 this dose will be equal to the MIC of *M. haemolytica* in 90% of calves. For the
6
7 380 nominal dose of 2.5mg/kg, the corresponding TAR for *M. haemolytica* was 65.9%.
8
9 381 For a TAR of 90%, the computed dose for *P. multocida* was 2.52 mg/kg and for the
10
11 382 nominal dose of 2.50 mg/kg, the TAR was 87.2%.

12
13
14 383 **Fig. 5**

15
16
17 384 **Fig 6**

18
19
20 385 **Fig. 7**

21
22
23 386 To identify the main sources of variability amongst the factors controlling the dose
24
25 387 (plasma clearance, MICs or fu), a sensitivity analysis was performed to apportion
26
27 388 variability to these three factors. The main source of variability for *P. multocida* was
28
29 389 MIC (76.7%); the BSV of serum clearance was lower (23.0%) and the variability of fu
30
31 390 was negligible. For *M. haemolytica*, results were very similar with 70.3% of the
32
33 391 variability due to the MIC distribution and 29.2% to the BSV of clearance, indicating
34
35 392 that the data should be relevant for different cattle populations.
36
37
38
39

40
41 393

42 43 394 **Discussion**

44
45 395 The principal findings of the present study are that: (i) contrary to previous claims, the
46
47 396 dosage of tulathromycin can be documented using standard PK/PD concepts; (ii) the
48
49 397 recommended dose of tulathromycin (2.5mg/kg) is consistent with our calculated
50
51 398 population doses, with computed TARs of 66% and 87% for a 2.50 mg/kg dose for *M.*
52
53 399 *haemolytica* and *P. multocida*, respectively; (iii) tulathromycin did not accumulate in
54
55 400 inflammatory exudate in comparison with serum concentrations; (iv) the BP value of
56
57
58
59
60

1
2
3 401 the PK/PD index *i.e.* the $AUC_{(0-24h)}/MIC$ was approximately 24 h, indicating that
4
5 402 tulathromycin has a potent bactericidal effect for a concentration approximately equal
6
7 403 to the MIC; (v) PK/PD cut-offs are consistent with the current BPs of AST issued by
8
9 404 the CLSI and EMA; and (vi) the main source of variability to take into account to
10
11 405 determine a dose for a given animal is of PD origin (MIC) and not the actual
12
13 406 tulathromycin exposure.
14
15
16
17

407

18 408 The aim of this study was to determine the adequacy (or not) of the currently
19
20 409 recommended dosage of tulathromycin (2.5mg/kg) for calves, by computing a
21
22 410 population dose covering a range of TARs *i.e.* the aim was to assess the ability of a
23
24 411 standard PK/PD model to determine a dose for tulathromycin for different
25
26 412 percentages (up to 95%) of the population. The present PK/PD approach clearly
27
28 413 indicated the therapeutic relevance of serum concentration; and the data further
29
30 414 suggest that other explanations for the efficacy of tulathromycin, including high local
31
32 415 intracellular pulmonary concentration or a specific transportation of the drug by
33
34 416 macrophages or neutrophils to the extracellular biophase in the lung (as discussed in
35
36 417 the Introduction) do not need to be invoked. The dose of tulathromycin was first (prior
37
38 418 to licensing) determined in field studies and was based primarily on clinical efficacy,
39
40 419 because it was considered that the clinical efficacy for this drug could not be derived
41
42 420 from a PK/PD relationship. The present data provide clear evidence that standard
43
44 421 PK/PD concepts would, in fact, have fully sufficed to derive an appropriate dosage for
45
46 422 tulathromycin. The crucial proviso, however, is that, for the PK/PD integration and
47
48 423 modelling approaches to be valid, MICs have to be determined in serum and not, as
49
50 424 is routine and almost universal, in an artificial medium such as MHB. We therefore
51
52 425 conclude that what should be questioned for macrolides is the utilization of *in vitro*
53
54
55
56
57
58
59
60

1
2
3 426 MICs in a non-biological fluid such as MHB, when establishing PK/PD relationships
4
5 427 as a basis for dosage determination.
6

7 428 The main limitation to our computations is the selected value of the SF used to
8
9 429 transform MICs derived from the epidemiological survey and obtained in broth, into
10
11 430 equivalent MICs in serum. A factor of 50 was used, based on broth:serum MIC ratios
12
13 431 for tulathromycin reported in our previous paper (Lees, Illambas et al., 2016). This
14
15 432 revealed a very large serum effect on the potency of tulathromycin, as had been
16
17 433 previously reported by others (Godinho, Keane et al., 2005). For example, Godhino
18
19 434 et al (Godinho, 2008) obtained a lower broth:serum MIC ratio (up to 16) but in the
20
21 435 presence of only 40% bovine serum (rather than the 100% serum used in the present
22
23 436 study).
24
25
26

27 437 As the ratio MHB:serum MIC is approximately 50, the PK/PD cut-off (in MHB) for a
28
29 438 TAR of 90% for an expected duration of activity of 240 h is 4.15 µg/mL, a value
30
31 439 almost four times lower than the current clinical BP of the CLSI (16 µg/mL) but more
32
33 440 consistent with the [EMA/CVMP BP](#) of ≤ 8 µg/mL (Committee for medicinal products for
34
35 441 veterinary use (CVMP), 2003) supporting the validity of our PK/PD approach.
36
37
38

39 442 The second possible limitation of our computations is the limited number of animals
40
41 443 that were considered in the population analysis (n=26) with the possibility of having
42
43 444 excluded some relevant variability factors (for example breed of animal).
44

45
46 445 Nevertheless, we are confident in the overall conclusions, because the sensitivity
47
48 446 analysis showed clearly that the impact of the PK variability is minimal in comparison
49
50 447 with that of PD origin (the epidemiological MICs). Moreover, our population model
51
52 448 included both healthy and diseased animals and it was previously reported that there
53
54 449 were no statistically significant differences in tulathromycin PK between pre-ruminant
55
56 450 calves and adult cattle (Committee for medicinal products for veterinary use (CVMP),
57
58
59
60

1
2
3 451 2003). It is concluded that our PK population model was sufficiently robust for the
4
5 452 purpose of deriving PK/PD cut-offs and population dose distributions.
6
7

8 453 For single dose administration of a long acting formulation, computation of a dose
9
10 454 using a PK/PD approach requires estimation of the duration of action. To the best of
11
12 455 our knowledge, this duration has not been experimentally determined for cattle.
13

14 456 However, in pigs duration of effectiveness of tulathromycin was determined in a
15
16
17 457 pulmonary–disease challenge model, using *Actinobacillus pleuropneumoniae* by
18
19 458 administering a single dose of tulathromycin from 11 to 3 days before the challenge
20
21 459 (Waag, Bradford et al., 2008). These authors concluded that a single dose of
22
23 460 tulathromycin provides up to 9 days of protection against death and severe morbidity.
24

25
26 461 For the calves used in this study, we define *a priori* the activity period as that for
27
28 462 which the average serum concentration of tulathromycin was lower than the
29
30 463 EMA/CVMP BP of 8 µg/mL in MHB (equivalent to 160 ng/mL in serum). The MCSs
31
32 464 indicated that the average concentration over the first 10 days following a dose of 2.5
33
34 465 mg/kg was 184 ng/mL and this duration was selected to explore the population dose
35
36 466 distribution, although any other duration could be investigated using this approach.
37
38
39

40 467 Computation of a PK/PD dose also requires selection of an appropriate PK/PD index
41
42 468 and determination of its BP value. From the rate and extent of killing of *M.*
43
44 469 *haemolytica* and *P. multocida* by tulathromycin in time-kill studies, the actions were
45
46 470 judged to be, for the former, concentration-dependent in MHB and co-dependent in
47
48 471 serum and, for the latter, co-dependent in both matrices (Lees, Illambas et al., 2016).
49

50 472 Therefore, for both bacterial species, the use of AUC/MIC as a PK/PD surrogate
51
52 473 for/predictor of efficacy is justified (Thomas, Forrest et al., 1998; Schentag, 2000;
53
54 474 Evans, 2005). It should be noted that the time-kill studies were conducted with initial
55
56 475 inoculum counts of the order of 10^6 to 10^7 cfu/mL *i.e.* for an inoculum size likely to be
57
58
59
60

1
2
3 476 relatively high when considering a natural infection; according to Roof (ROOF, 2011)
4
5 477 the total CFU of pathogens in the entire lung for cattle with identified pathogens
6
7 478 ranged from 2×10^7 – 2×10^8 CFU for *P.multocida* and 9×10^6 – 9×10^8 CFU for *M.*
8
9 479 *haemolytica*, indicating that our time-kill curves were indeed obtained with a an
10
11 480 appropriate inoculum size, regarding a natural infection. However, for
12
13 481 metaphylaxis/control conditions, for which a lower pathogen load is expected, lower
14
15 482 concentrations of tulathromycin in the biophase are likely to be required, thus
16
17 483 indicating that our results are conservative enough to cover all infectious conditions.
18
19

20
21 484 The present findings confirm, in part, previous publications on the PK of
22
23 485 tulathromycin (Nowakowski, Inskeep et al., 2004; Evans, 2005). After subcutaneous
24
25 486 dosing, a terminal half-life of 90 h was reported by these authors, and in this study
26
27 487 half-life was 84 h. However, corresponding $AUC_{(0-last)}$ values were 16.0 $\mu\text{g}\cdot\text{h}/\text{mL}$
28
29 488 [1,33] and 45.1 $\mu\text{g}\cdot\text{h}/\text{mL}$ [this study], where $AUC_{(0-last)}$ was measured over similar
30
31 489 times. The causes of these differences are unknown. Our data further extends the
32
33 490 results of earlier workers, by establishing the distribution of tulathromycin into
34
35 491 extravascular fluids (exudate and transudate) in a tissue cage model. This model
36
37 492 provides a means of sampling inflammatory exudate to allow comparison of the time
38
39 493 course and magnitude of drug penetration into an inflamed (exudate), a non-inflamed
40
41 494 (transudate) fluid and in serum (Higgins, Lees et al., 1984; Sidhu, Shojaee Aliabadi et
42
43 495 al., 2003). Exudate concentrations were always lower than serum concentration,
44
45 496 indicating that there was no specific accumulation of this drug in an inflammatory
46
47 497 biophase, as advocated by those assuming a special delivery of tulathromycin in
48
49 498 inflammatory fluid by accumulation of macrophages or neutrophils.
50
51
52
53
54

55
56 499
57
58
59
60

1
2
3 500 **Conclusions**
4
5

6 501 Based on PK/PD modelling, the present study predicts, that the current marketed
7
8 502 dose of tulathromycin is appropriate and that serum concentrations achieved with this
9
10 503 dosage is biologically and clinically relevant. Recourse to consideration of the high
11
12 504 concentration of tulathromycin in lung homogenate or to a specific transport of the
13
14 505 drug by leucocytes into the biophase is not necessary, and this conclusion
15
16 506 recognizes that the relevant matrix to estimate MIC is serum.
17
18
19
20
21 507
22
23
24
25
26
27
28
29
30
31
32
33
34
35
36
37
38
39
40
41
42
43
44
45
46
47
48
49
50
51
52
53
54
55
56
57
58
59
60

Conflict of interest statement

P Lees has acted as a consultant to Pfizer Animal Health. He has not consulted ever for Zoetis, only the predecessor company Pfizer on another drug. L. Pelligand has received funding from Zoetis Ltd for non-related studies on maropitant in the dog. None of the other authors has a financial or personal relationship with other people or organizations that could inappropriately influence or bias the contents of the paper.

This does not alter our adherence to PLOS ONE policies on sharing data and materials.

Acknowledgements

Tulathromycin was kindly supplied by Pfizer Animal Health Ltd.

References

- Aliabadi, F.S. & Lees, P. (2001) Pharmacokinetics and pharmacodynamics of danofloxacin in serum and tissue fluids of goats following intravenous and intramuscular administration. *American Journal of Veterinary Research*, **62**(12), 1979-1989.
- Anonymous (2005). *Freedom information summary. Original new animal drug application. Draxxin injectable solution (Tulathromycin)*. In Freedom information summary. Original new animal drug application. Draxxin injectable solution (Tulathromycin) Ed Administration, F.a.D. pp. 1-57. PFIZER.
- Bosnar, M., Kelneric, Z., Munic, V., Erakovic, V. & Parnham, M.J. (2005) Cellular uptake and efflux of azithromycin, erythromycin, clarithromycin, telithromycin, and cethromycin. *Antimicrobial Agents and Chemotherapy*, **49**(6), 2372-2377.
- Committee for medicinal products for human use (CHMP) (2011). *Guideline on bioanalytical method validation*. In Guideline on bioanalytical method validation pp. 1-23. European Medicines Agency, London.

- 1
2
3 Committee for medicinal products for veterinary use (CVMP) (2003). *Scientific discussion -*
4 *Draxxin*. In *Scientific discussion - Draxxin* pp. 1-31. European Medicines
5 Agency, London.
- 6 Evans, N.A. (2005) Tulathromycin: an overview of a new triamilide antibiotic for
7 livestock respiratory disease. *Veterinary therapeutics : research in applied*
8 *veterinary medicine*, **6**(2), 83-95.
- 9 Gladue, R.P., Bright, G.M., Isaacson, R.E. & Newborg, M.F. (1989) In vitro and in
10 vivo uptake of azithromycin (CP-62,993) by phagocytic cells: possible
11 mechanism of delivery and release at sites of infection. *Antimicrobial Agents*
12 *and Chemotherapy*, **33**(3), 277-282.
- 13 Godinho, K.S. (2008) Susceptibility testing of tulathromycin: interpretative
14 breakpoints and susceptibility of field isolates. *Veterinary Microbiology*, **129**(3-
15 4), 426-432.
- 16 Godinho, K.S., Keane, S.G., Nanjiani, I.A., Benchaoui, H.A., Sunderland, S.J., Jones,
17 M.A., Weatherley, A.J., Gootz, T.D. & Rowan, T.G. (2005) Minimum inhibitory
18 concentrations of tulathromycin against respiratory bacterial pathogens
19 isolated from clinical cases in European cattle and swine and variability arising
20 from changes in in vitro methodology. *Veterinary therapeutics : research in*
21 *applied veterinary medicine*, **6**(2), 113-121.
- 22 Higgins, A.J., Lees, P. & Wright, J.A. (1984) Tissue-cage model for the collection of
23 inflammatory exudate in ponies. *Res Vet Sci*, **36**(3), 284-289.
- 24 Huang, R.A., Letendre, L.T., Banav, N., Fischer, J. & Somerville, B. (2010)
25 Pharmacokinetics of gamithromycin in cattle with comparison of plasma and
26 lung tissue concentrations and plasma antibacterial activity. *Journal of*
27 *Veterinary Pharmacology and Therapeutics*, **33**(3), 227-237.
- 28 Karlsson, M.O. & Savic, R.M. (2007) Diagnosing model diagnostics. *Clinical*
29 *Pharmacology and Therapeutics*, **82**(1), 17-20.
- 30 Kiem, S. & Schentag, J.J. (2008) Interpretation of antibiotic concentration ratios
31 measured in epithelial lining fluid. *Antimicrobial Agents and Chemotherapy*,
32 **52**(1), 24-36.
- 33 Lees, P., Illambas, J., Potter, T., Pelligand, L., Rycroft, A. & Toutain, P.L. (2016)
34 What is the true in vitro potency and efficacy of tulathromycin against
35 *Mannheimia haemolytica* and *Pasteurella multocida* ? *Journal of Veterinary*
36 *Pharmacology and Therapeutics*, **submitted**.
- 37 Lees, P., Shojaee Aliabadi, F. & Toutain, P.L. (2004) PK-PD modelling: an alternative
38 to dose titration studies for antimicrobial drug dosage selection. *The*
39 *Regulatory Affairs Journal Pharma*, **15**(3), 175-180.
- 40 Mandell, G.L. & Coleman, E. (2001) Uptake, transport, and delivery of antimicrobial
41 agents by human polymorphonuclear neutrophils. *Antimicrobial Agents and*
42 *Chemotherapy*, **45**(6), 1794-1798.
- 43 Menge, M., Rose, M., Bohland, C., Zschiesche, E., Kilp, S., Metz, W., Allan, M.,
44 Ropke, R. & Nurnberger, M. (2012) Pharmacokinetics of tildipirosin in bovine
45 plasma, lung tissue, and bronchial fluid (from live, nonanesthetized cattle).
46 *Journal of Veterinary Pharmacology and Therapeutics*, **35**(6), 550-559.
- 47 Mouton, J.W., Theuretzbacher, U., Craig, W.A., Tulkens, P.M., Derendorf, H. & Cars,
48 O. (2008) Tissue concentrations: do we ever learn? *Journal of Antimicrobial*
49 *Chemotherapy*, **61**(2), 235-237.
- 50 Muller, M., dela Pena, A. & Derendorf, H. (2004) Issues in pharmacokinetics and
51 pharmacodynamics of anti-infective agents: distribution in tissue. *Antimicrobial*
52 *Agents and Chemotherapy*, **48**(5), 1441-1453.
- 53
54
55
56
57
58
59
60

- 1
2
3 Nowakowski, M.A., Inskeep, P.B., Risk, J.E., Skogerboe, T.L., Benchaoui, H.A.,
4 Meinert, T.R., Sherington, J. & Sunderland, S.J. (2004) Pharmacokinetics and
5 lung tissue concentrations of tulathromycin, a new triamilide antibiotic, in
6 cattle. *Veterinary therapeutics : research in applied veterinary medicine*, **5**(1),
7 60-74.
- 8
9 ROOF, C. (2011). *Qualification and quantification of bacterial pathogen load in acute*
10 *bovine respiratory disease cases* In Qualification and quantification of bacterial
11 pathogen load in acute bovine respiratory disease cases Kansas State
12 University, Manhattan, Kansas.
- 13 Sarasola, P., Jernigan, A.D., Walker, D.K., Castledine, J., Smith, D.G. & Rowan, T.G.
14 (2002) Pharmacokinetics of selamectin following intravenous, oral and topical
15 administration in cats and dogs. *Journal of Veterinary Pharmacology and*
16 *Therapeutics*, **25**(4), 265-272.
- 17 Schentag, J.J. (2000) Clinical pharmacology of the fluoroquinolones: studies in
18 human dynamic/kinetic models. *Clinical Infectious Diseases*, **31 Suppl 2**, S40-
19 44.
- 20
21 Scheuch, E., Spieker, J., Venner, M. & Siegmund, W. (2007) Quantitative
22 determination of the macrolide antibiotic tulathromycin in plasma and broncho-
23 alveolar cells of foals using tandem mass spectrometry. *Journal of*
24 *chromatography. B, Analytical technologies in the biomedical and life*
25 *sciences*, **850**(1-2), 464-470.
- 26
27 Scoreneaux, B. & Shryock, T.R. (1998) Intracellular accumulation, subcellular
28 distribution and efflux of tilmicosin in swine phagocytes. *Journal of Veterinary*
29 *Pharmacology and Therapeutics*, **21**(4), 257-268.
- 30
31 Scoreneaux, B. & Shryock, T.R. (1999) Intracellular accumulation, subcellular
32 distribution, and efflux of tilmicosin in bovine mammary, blood, and lung cells.
33 *Journal of Dairy Science*, **82**(6), 1202-1212.
- 34
35 Sidhu, P., Shojaee Aliabadi, F., Andrews, M. & Lees, P. (2003) Tissue chamber
36 model of acute inflammation in farm animal species. *Res Vet Sci*, **74**(1), 67-
37 77.
- 38
39 Thomas, J.K., Forrest, A., Bhavnani, S.M., Hyatt, J.M., Cheng, A., Ballow, C.H. &
40 Schentag, J.J. (1998) Pharmacodynamic evaluation of factors associated with
41 the development of bacterial resistance in acutely ill patients during therapy.
42 *Antimicrobial Agents and Chemotherapy*, **42**(3), 521-527.
- 43
44 Toutain, P.L. (2009). *PK/PD approach for antibiotics: tissue or blood drug levels to*
45 *predict antibiotic efficacy*. In PK/PD approach for antibiotics: tissue or blood
46 drug levels to predict antibiotic efficacy Eds Riviere, J.E. & Fink Gremmels, J.
47 pp. 19-21. *Journal of Veterinary Pharmacology and Therapeutics*, Leipzig,
48 Germany.
- 49
50 Toutain, P.L., Bousquet-Melou, A. & Martinez, M. (2007) AUC/MIC: a PK/PD index
51 for antibiotics with a time dimension or simply a dimensionless scoring factor?
52 *Journal of Antimicrobial Chemotherapy*, **60**(6), 1185-1188.
- 53
54 Toutain, P.L., del Castillo, J.R.E. & Bousquet-Mélou, A. (2002) The pharmacokinetic-
55 pharmacodynamic approach to a rational dosage regimen for antibiotics.
56 *Research in Veterinary Science*, **73**(2), 105-114.
- 57
58 Toutain, P.L. & Lees, P. (2004) Integration and modelling of pharmacokinetic and
59 pharmacodynamic data to optimize dosage regimens in veterinary medicine.
60 *Journal of Veterinary Pharmacology and Therapeutics*, **27**(6), 467-477.
- 61
62 Villarino, N., Brown, S.A. & Martin-Jimenez, T. (2013) The role of the macrolide
63 tulathromycin in veterinary medicine. *Veterinary journal*, **198**(2), 352-357.

- 1
2
3 Villarino, N., Brown, S.A. & Martin-Jimenez, T. (2014) Understanding the
4 pharmacokinetics of tulathromycin: a pulmonary perspective. *Journal of*
5 *Veterinary Pharmacology and Therapeutics*, **37**(3), 211-221.
- 6 Villarino, N., Lesman, S., Fielder, A., Garcia-Tapia, D., Cox, S., Lucas, M., Robinson,
7 J., Brown, S.A. & Martin-Jimenez, T. (2013) Pulmonary pharmacokinetics of
8 tulathromycin in swine. Part 2: Intra-airways compartments. *Journal of*
9 *Veterinary Pharmacology and Therapeutics*, **36**(4), 340-349.
- 10 Villarino, N., Lesman, S., Fielder, A., Garcia-Tapia, D., Cox, S., Lucas, M., Robinson,
11 J., Brown, S.A. & Martin-Jimenez, T. (2013) Pulmonary pharmacokinetics of
12 tulathromycin in swine. Part I: Lung homogenate in healthy pigs and pigs
13 challenged intratracheally with lipopolysaccharide of *Escherichia coli*. *Journal*
14 *of Veterinary Pharmacology and Therapeutics*, **36**(4), 329-339.
- 15 Waag, T.A., Bradford, J.R., Lucas, M.J., Rooney, K.A., Nutsch, R.G., Lechtenberg,
16 K.F. & Smothers, C.D. (2008) Duration of effectiveness of tulathromycin
17 injectable solution in an *Actino bacillus pleuropneumoniae* respiratory-disease
18 challenge model in swine. *Journal of Swine Health and Production*, **16**(3), 126-
19 130.
20
21
22
23
24
25
26
27
28
29
30
31
32
33
34
35
36
37
38
39
40
41
42
43
44
45
46
47
48
49
50
51
52
53
54
55
56
57
58
59
60

Table 1. Pharmacokinetic variables for tulathromycin in serum, exudate and transudate in calves

| Variable (units) | Serum | | Exudate | | Transudate | |
|---|-------|------|---------|-------|------------|-------|
| | Mean | SEM | Mean | SEM | Mean | SEM |
| C_{max} (µg/mL) | 0.75 | 0.11 | 0.24 | 0.016 | 0.12 | 0.016 |
| T_{max} (h)* | 2.20 | 1.18 | 19.7 | 2.89 | 18.0 | 3.69 |
| T_½ (h)** | 84.0 | 3.61 | 123.3 | 10.33 | 92.1 | 9.36 |
| AUC_(0-last) (µg.h/mL) | 45.1 | 5.84 | 18.4 | 1.99 | 8.58 | 0.85 |
| AUC_(0-∞) (µg.h/mL) | 47.9 | 6.31 | 20.0 | 2.24 | 9.50 | 0.89 |
| MRT_(0-last) (h) | 91.4 | 2.88 | 87.2 | 3.54 | 83.6 | 6.39 |
| Cl/F (mL/kg/h) | 52.1 | 7.51 | - | - | - | - |

Geometric mean unless stated and SEM (n=10) *Arithmetic mean; **Harmonic mean.

T_{max}: Time following dosing at which the maximum concentration (C_{max}) occurred.

T_½: Terminal Half-life

AUC_(0-last): Area under the concentration-time graph from 0 to the last sampling time

AUC_(0-∞): Area under the concentration-time graph from 0 to infinity

MRT: Mean residence time

Cl/F: Clearance scaled by bioavailability

Table 2. Results obtained from the killing curve assay.

| Variables | <i>Mannheimia haemolytica</i> | | | | <i>Pasteurella multocida</i> | | | |
|--|-------------------------------|-------|----------------|-------|------------------------------|-------|----------------|------|
| | MHB | | Serum | | MHB | | Serum | |
| | Mean | SD | Mean | SD | Mean | SD | Mean | SD |
| Log E_{max} (cfu/mL) | -4.53 | 0.66 | -5.12 | 1.43 | -5.06 | 1.41 | -4.51 | 2.03 |
| Log E₀ (cfu/mL) | 1.87 | 0.49 | 1.97 | 1.03 | 1.4 | 1.04 | 2.84 | 1.95 |
| Log E_{max}-log E₀ (cfu/mL) | -6.40 | 0.58 | -7.09 | 1.97 | -6.46 | 0.97 | -7.37 | 0.75 |
| Bacteriostatic (AUC_{0-24h}/MICexp)(h) | 17.15 | 7.14 | 19.75 | 14.72 | 18.45 | 11.59 | 17.28 | 9.23 |
| Bactericidal (AUC_{0-24h}/MICexp) (h) | 21.04 | 8.39 | 38.44 | 30.35 | 23.7 (n=5) | 18.03 | 22.72 (n=5) | 1.98 |
| 4log₁₀ reduction in (AUC_{0-24h}/MICexp) (h) | 24.86 (n=5) | 10.58 | 32.16 (n=4) | 11.6 | 17.19 (n=4) | 9.45 | 28.83 (n=5) | 3.71 |

Data (mean, SD, n=6 unless stated) for three levels of growth inhibition of *M. haemolytica* and *P. multocida* by tulathromycin in Mueller Hinton broth (MHB) and serum.

Table 3. Population parameters for tulathromycin disposition in calves.

| Parameter | Estimate | SE | CV% |
|--|-----------------|-----------|------------|
| tvKa | 10.7 | 2.75 | 25.6 |
| tvA | 389 | 123 | 31.7 |
| tvAlpha | 0.2252 | 0.073 | 32.4 |
| tvB | 365 | 39 | 10.6 |
| tvBeta | 0.008172 | 0.00040 | 4.8 |
| SD of the proportional residual error (eps) | 0.245175 | 0.00683 | 2.8 |

Typical values (tv) of the structural parameters of the population model (thetas), their associated Standard Error (SE) and Coefficient of Variation (CV%) and the SD of the residual for the model.

Table 4. Between Subject Variability (BSV) of tulathromycin disposition in calves.

| ETA | η_{Ka} | η_A | η_{Alpha} | η_B | η_{Beta} |
|--|-------------|----------|----------------|----------|---------------|
| No covariate | 129 | 344 | 224 | 53 | 8 |
| With the health status as covariate | 109 | 154 | 122 | 52 | 7.8 |

Coefficient of variation (CV%) of the variance of the etas (η) indicating the magnitude of the BSV for the model without covariate and model with the health status as covariate

For Peer Review

Table 5. PK/PD cut-offs for tulathromycin in calves.

| Percentiles (%) | Intervals (h) | | | | | | | | | |
|-----------------|---------------|------------|------------|------------|------------|------------|------------|-----------|-----------|-----------|
| | 0-24 | 0-48 | 0-72 | 0-96 | 0-120 | 0-144 | 0-168 | 0-192 | 0-216 | 0-240 |
| 95 | 142 | 132 | 120 | 109 | 99 | 91 | 84 | 78 | 72 | 67 |
| 90 | 172 | 160 | 145 | 132 | 122 | 111 | 103 | 96 | 89 | 83 |
| 80 | 210 | 200 | 183 | 167 | 153 | 140 | 129 | 119 | 111 | 104 |
| 70 | 244 | 229 | 209 | 192 | 176 | 162 | 150 | 139 | 129 | 121 |
| 60 | 278 | 263 | 242 | 222 | 204 | 188 | 174 | 161 | 150 | 140 |
| 50 | 316 | 300 | 277 | 255 | 234 | 217 | 201 | 186 | 172 | 161 |
| 40 | 356 | 337 | 312 | 287 | 264 | 245 | 227 | 210 | 196 | 183 |
| 30 | 408 | 389 | 360 | 331 | 305 | 283 | 262 | 244 | 228 | 214 |
| 20 | 476 | 453 | 419 | 384 | 354 | 329 | 305 | 283 | 263 | 245 |
| 10 | 586 | 555 | 518 | 480 | 445 | 412 | 384 | 359 | 334 | 312 |
| 5 | 685 | 653 | 611 | 566 | 525 | 488 | 454 | 424 | 396 | 370 |

These values are the average serum concentrations (ng/mL) of tulathromycin over 10 incremental time intervals (0-24h, 0-48h....0-240h) that are at least achieved by a given percentage of the calf population (Target Attainment Rate from 5 to 95%) after a single subcutaneous administration of tulathromycin at a dose rate of 2.5 mg/kg. These values should be multiplied by 50 to give the equivalent PK/PD cut-offs in MHB. For example, for 90% TAR and a duration of 0-240 h serum concentration = 4,150 ng/mL and for 50% TAR and a time interval of 0-120 h serum concentration = 11,700 ng/mL.

Fig.1. Flow chart of the main steps of sample collection, data analysis and results outputs for the PK/PD analysis of tulathromycin in calves.

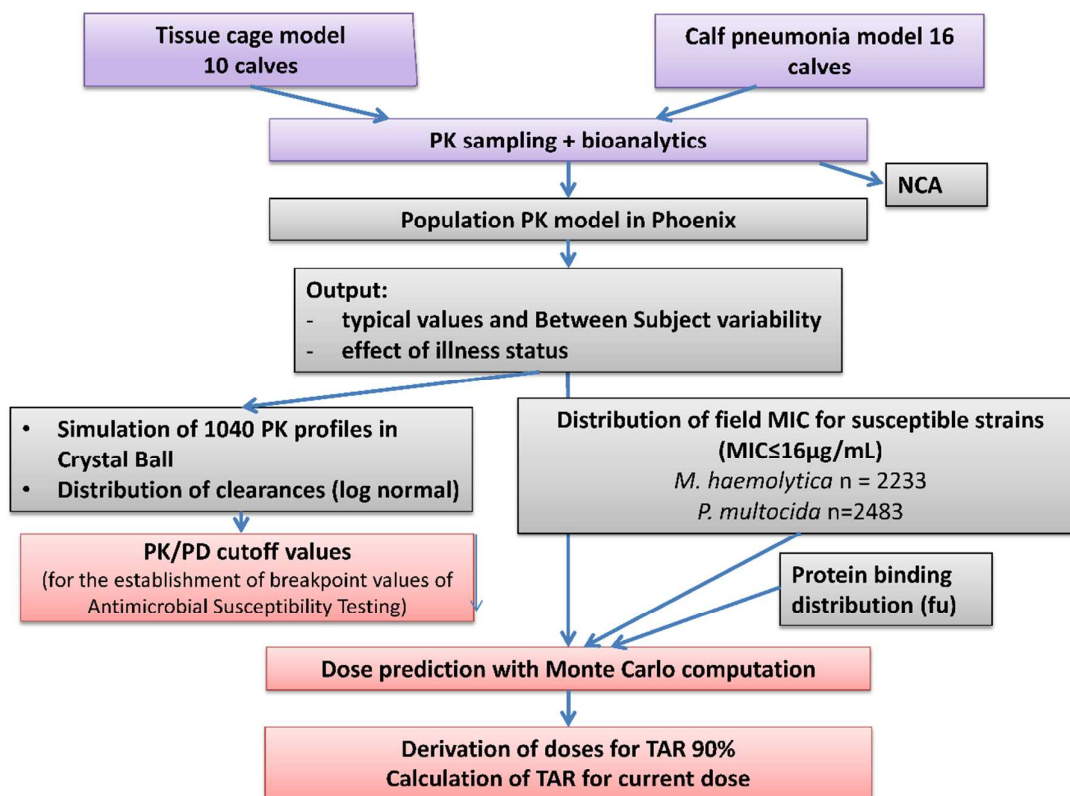


Fig. 2. Tulathromycin concentration in serum over the first 12 h after subcutaneous administration of tulathromycin in calves. Mean + SEM tulathromycin concentration in serum from 0 to 12 h after subcutaneous injection of tulathromycin at a dose rate of 2.5mg/kg.

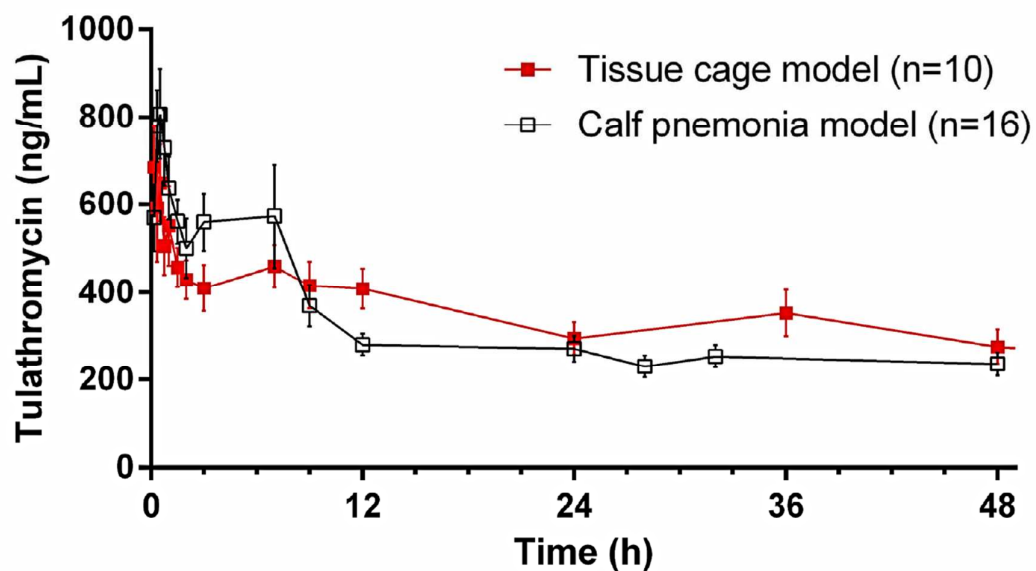
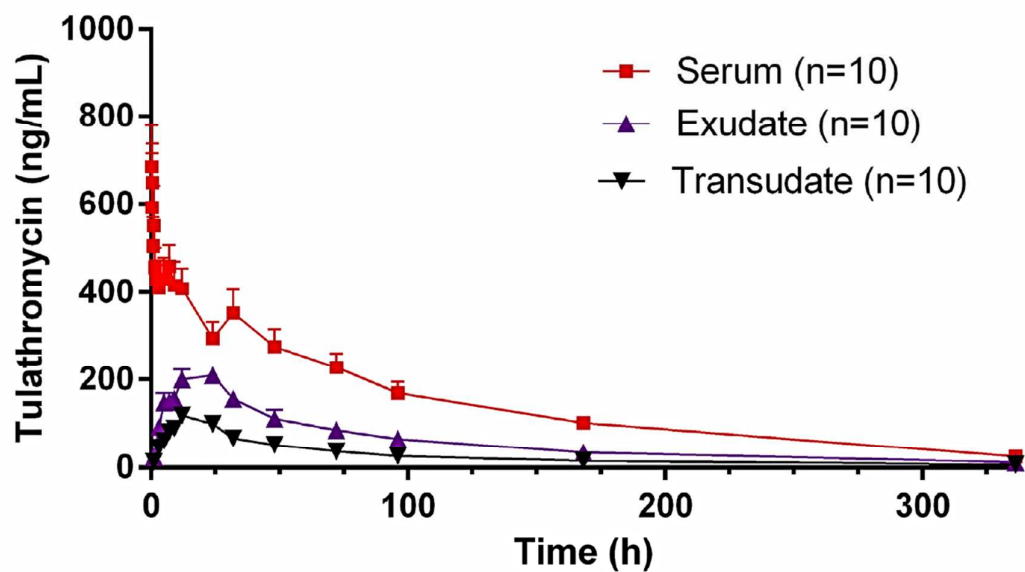
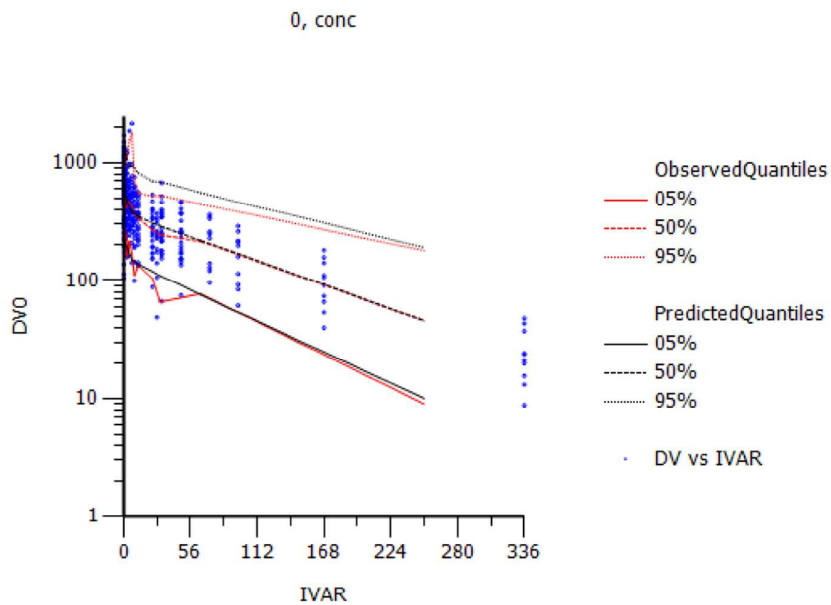


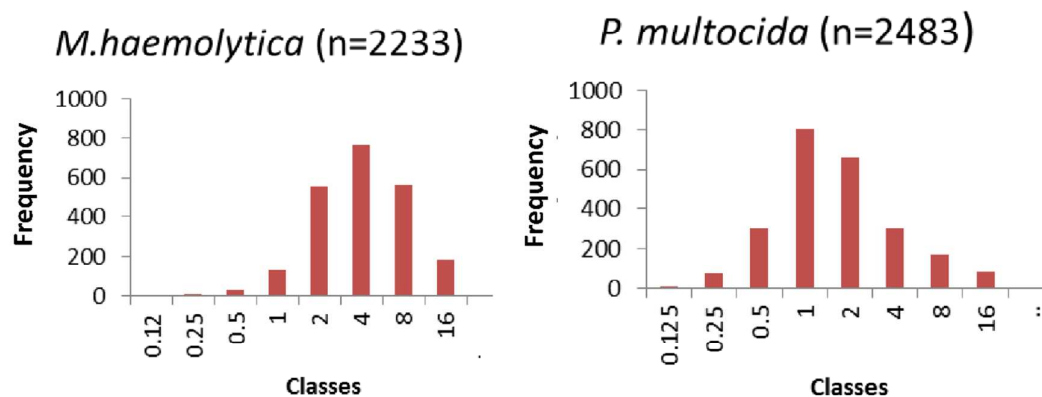
Fig.3. Tulathromycin concentrations in serum, exudate and transudate over 336 h after subcutaneous administration of tulathromycin in calves. Mean + SEM tulathromycin concentrations in serum, exudate and transudate for calves after subcutaneous injection of tulathromycin at a dose rate of 2.5mg/kg.



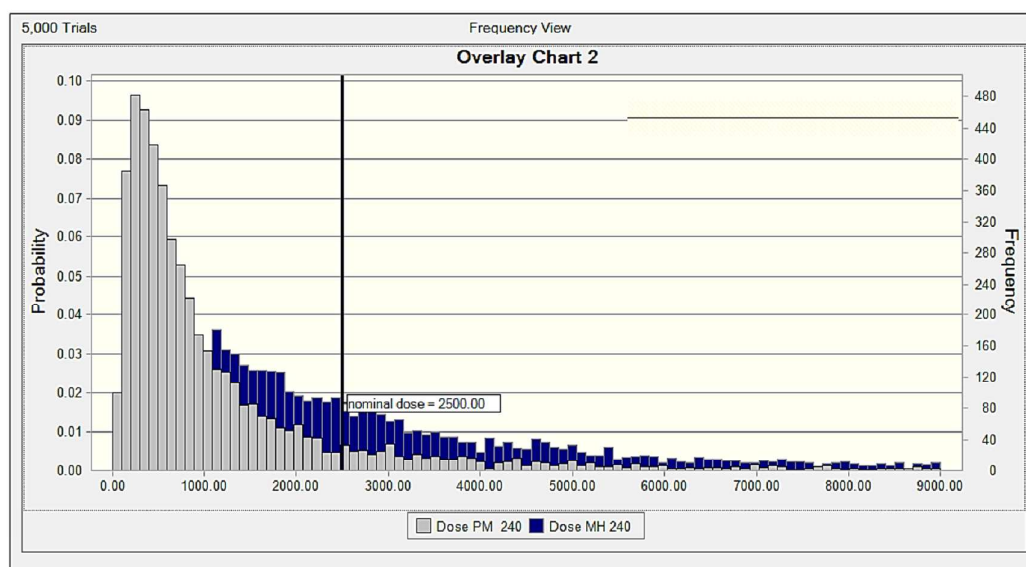
1
2
3 **Fig. 4: Visual Predictive Check: Observed plasma concentration (ng/ml) vs. time (h)**
4 **and observed and predicted quantiles.** This diagnostic plot illustrates the observed (red) 5,
5 50 and 95% quantiles superimposed with the predictive check quantiles (black) 5, 50 and
6 95% over the observed serum concentrations (blue symbols).
7
8
9
10
11
12
13
14
15
16
17
18
19
20
21
22
23
24
25
26
27
28
29
30
31
32
33
34
35
36
37
38
39
40
41
42
43
44
45
46
47
48
49
50
51
52
53
54
55
56
57
58
59
60



1
2
3 **Fig. 5. MIC distribution of *M. haemolytica* and *P. multocida*.** Frequency of Minimum
4 Inhibitory Concentrations (MICs) for tulathromycin against bovine respiratory pathogens *P.*
5 *multocida* (n=2483) and *M. haemolytica* (n=2233). The isolates were from the Zoetis
6 surveillance program and were isolated from years 2004 to 2010. MICs ($\mu\text{g/mL}$) were
7 obtained in Mueller Hinton Broth; results are given for only susceptible strains according to
8 the CLSI clinical breakpoint (MICs $\leq 16\mu\text{g/mL}$)
9
10
11
12
13
14
15
16
17
18
19
20
21
22
23
24
25



1
2
3
4
5 **Fig. 6. Population distributions of tulathromycin doses.** Comparison of the two
6 population distributions of tulathromycin doses, as predicted by a population PK/PD model
7 for *P. multocida* (grey) and *M. haemolytica* (blue) for duration of action of 240 h. The vertical
8 bar indicates the nominal dose of 2.5 mg/kg. Dose (0 to 9000 µg/kg) is indicated on the X
9 axis.
10
11
12
13
14
15
16
17
18
19
20
21
22
23
24
25
26
27
28
29
30
31
32
33
34
35
36
37
38
39
40
41
42
43
44
45
46
47
48
49
50
51
52
53
54
55
56
57
58
59
60



ew

1
2
3
4
5 **Fig. 7. Cumulative population distributions of tulathromycin doses.** Comparison of the
6 two cumulative distributions of doses of tulathromycin, as predicted by a population PK/PD
7 model for *P. multocida* (grey) and *M. haemolytica* (blue) for a duration of action of 240 h in
8 terms of Target Attainment Rate (Y axis: 0-100%). The vertical bar indicates the nominal
9 dose of 2.5 mg/kg. Dose (0 to 9000 µg/kg) is indicated on the X axis.
10
11
12
13
14
15
16
17
18
19
20

