

Savadogo, G., Souares, A., Sié, A., Parmar, D., Bibeau, G. & Sauerborn, R. (2015). Using a community-based definition of poverty for targeting poor households for premium subsidies in the context of a community health insurance in Burkina Faso. *BMC Public Health*, 15, p. 84. doi: 10.1186/s12889-014-1335-4



**CITY UNIVERSITY  
LONDON**

[City Research Online](#)

**Original citation:** Savadogo, G., Souares, A., Sié, A., Parmar, D., Bibeau, G. & Sauerborn, R. (2015). Using a community-based definition of poverty for targeting poor households for premium subsidies in the context of a community health insurance in Burkina Faso. *BMC Public Health*, 15, p. 84. doi: 10.1186/s12889-014-1335-4

**Permanent City Research Online URL:** <http://openaccess.city.ac.uk/6514/>

### **Copyright & reuse**

City University London has developed City Research Online so that its users may access the research outputs of City University London's staff. Copyright © and Moral Rights for this paper are retained by the individual author(s) and/ or other copyright holders. All material in City Research Online is checked for eligibility for copyright before being made available in the live archive. URLs from City Research Online may be freely distributed and linked to from other web pages.

### **Versions of research**

The version in City Research Online may differ from the final published version. Users are advised to check the Permanent City Research Online URL above for the status of the paper.

### **Enquiries**

If you have any enquiries about any aspect of City Research Online, or if you wish to make contact with the author(s) of this paper, please email the team at [publications@city.ac.uk](mailto:publications@city.ac.uk).

This Provisional PDF corresponds to the article as it appeared upon acceptance. Fully formatted PDF and full text (HTML) versions will be made available soon.

## Using a community-based definition of poverty for targeting poor households for premium subsidies in the context of a community health insurance in Burkina Faso

*BMC Public Health*

doi:10.1186/s12889-014-1335-4

Germain Savadogo (germain\_savadogo@hotmail.com)  
Aurelia Souarès (souares@uni-heidelberg.de)  
Ali Sié (alisie.crsn@fasonet.bf)  
Divya Parmar (Divya.Parmar@city.ac.uk)  
Gilles Bibeau (gilles.bibeau2@sympatico.ca)  
Rainer Sauerborn (rainer.sauerborn@urz.uni-heidelberg.de)

Published online: 06 February 2015

**ISSN** 1471-2458

**Article type** Research article

**Submission date** 10 September 2014

**Acceptance date** 22 December 2014

**Article URL** <http://dx.doi.org/10.1186/s12889-014-1335-4>

Like all articles in BMC journals, this peer-reviewed article can be downloaded, printed and distributed freely for any purposes (see copyright notice below).

Articles in BMC journals are listed in PubMed and archived at PubMed Central.

For information about publishing your research in BMC journals or any BioMed Central journal, go to <http://www.biomedcentral.com/info/authors/>

# Using a community-based definition of poverty for targeting poor households for premium subsidies in the context of a community health insurance in Burkina Faso

Germain Savadogo<sup>1,2,\*</sup>

\* Corresponding author

Email: germain\_savadogo@hotmail.com

Aurelia Souarès<sup>2</sup>

Email: souares@uni-heidelberg.de

Ali Sié<sup>1</sup>

Email: alisie.crsn@fasonet.bf

Divya Parmar<sup>3</sup>

Email: Divya.Parmar@city.ac.uk

Gilles Bibeau<sup>4</sup>

Email: gilles.bibeau2@sympatico.ca

Rainer Sauerborn<sup>2</sup>

Email: rainer.sauerborn@urz.uni-heidelberg.de

<sup>1</sup> Centre de Recherche en Santé de Nouna, Nouna, Burkina Faso

<sup>2</sup> Institute of Public Health, University of Heidelberg, INF 324 69120 Heidelberg, Germany

<sup>3</sup> School of Health Sciences, City University, London, UK

<sup>4</sup> Department of Anthropology, University of Montreal, Montreal, Canada

## Abstract

### Background

One of the biggest challenges in subsidizing premiums of poor households for community health insurance is the identification and selection of these households. Generally, poverty assessments in developing countries are based on monetary terms. The household is regarded as poor if its income or consumption is lower than a predefined poverty cut-off. These measures fail to recognize the multi-dimensional character of poverty, ignoring community members' perception and understanding of poverty, leaving them voiceless and powerless in the identification process. Realizing this, the steering committee of Nouna's health insurance devised a method to involve community members to better define 'perceived' poverty, using

this as a key element for the poor selection. The community-identified poor were then used to effectively target premium subsidies for the insurance scheme.

## **Methods**

The study was conducted in the Nouna's Health District located in northwest Burkina Faso. Participants in each village were selected to take part in focus-group discussions (FGD) organized in 41 villages and 7 sectors of Nouna's town to discuss criteria and perceptions of poverty. The discussions were audio recorded, transcribed and analyzed in French using the software NVivo 9.

## **Results**

From the FGD on poverty and the subjective definitions and perceptions of the community members, we found that poverty was mainly seen as scarcity of basic needs, vulnerability, deprivation of capacities, powerlessness, voicelessness, indecent living conditions, and absence of social capital and community networks for support in times of need. Criteria and poverty groups as described by community members can be used to identify poor who can then be targeted for subsidies.

## **Conclusion**

Policies targeting the poorest require the establishment of effective selection strategies. These policies are well-conditioned by proper identification of the poor people. Community perceptions and criteria of poverty are grounded in reality, to better appreciate the issue. It is crucial to take these perceptions into account in undertaking community development actions which target the poor. For most community-based health insurance schemes with limited financial resources, using a community-based definition of poverty in the targeting of the poorest might be a less costly alternative.

## **Keywords**

Self-assessment, Participatory, Poverty, Wealth, Community, Burkina Faso

## **Background**

The fight against poverty remains a universal concern [1-4]. In most developing countries, poverty issues are mainly addressed with regard to the implementation of national strategic plans for poverty alleviation [5-9]. In the 1970s, definitions of poverty focused mainly on income [10-14] and were often based on a comparison of individuals' income and consumption with some defined thresholds, below which individuals were considered poor [15,16]. New layers of complexity in the definition of poverty were added in the 1980s, including some non-monetary aspects [17-21]. Poverty is associated not only with insufficient income or weak consumption, but also with insufficient outcomes in respect to health, nutrition, literacy, deficient social relations, insecurity, low self-esteem and powerlessness [22-29].

Increasingly, a qualitative approach to an understanding of poverty is emerging, involving the cultural and socio-economic aspects, along with the individual perceptions of population [30-33]. The complexity of measuring poverty mirrors the plural character of its definition [21,25-29,34,35]. This complexity increases where participatory methods are used and framed in building on the indicators of poverty defined by the target population [36-41]. Indeed in the 1990s, emphasis was put on how poor people themselves viewed their situation [20,39,42]. The local population that lives and works in the same community is in a position to observe the economic status of fellow community members over a long period and can be considered to be a better judge to assess levels of wealth [43-46].

It is now universally recognized that poverty is a complex and multidimensional issue [17,21,25-27,29,34,35,47]. It is generally defined in relation to a given context, which may be global, regional, national, local or individual [48-52]. It has become the norm not to limit research in that area by considering only the monetary aspects of poverty [35].

In the context of scarcity of resources, support for disadvantaged groups requires that the poor individuals are identified correctly and that their needs are well understood [20,53-55]. Acknowledging the ways a given community defines poverty may be critical in how members of the community choose coping strategies [56-58]. Community-based definitions of poverty were required in various rural settings to target poor people and to address poverty issues. Indeed, Rai showed how Governments and aid agencies could reduce the costs in targeting the poor by using community information [39]. Community concepts of poverty have been used to provide premium exemption in the Ghana National Health Insurance Scheme [46]. A community wealth ranking was performed in Nouna, Burkina Faso, to target poor households for enrolment subsidies [40]. Collins, in Niagara Falls, Canada, tried to understand poverty from those who are poor [55]. A series of researches put emphasis on the voices of the poor in addressing poverty issues [59-62]. In Indonesia, the poor were targeted using three approaches, among them community wealth ranking [63]. Community Strategic Visioning was used as a method to define and address poverty in rural Montana [64].

In 2004, a community-based health insurance (CBHI) was launched in the Nouna's health district in Burkina Faso with the main purpose of improving access to health care. The enrolment was at the household level and households were required to renew their membership yearly [65-68]. Enrolment among the poor households was very low throughout and financial barriers were mentioned as the main reason for not enrolling in the scheme [40,69]. In response to this, in 2006, the CBHI steering committee decided to provide premium subsidies to poor households [40]. In 2007, a method of self-assessment named community wealth ranking (CWR) was used to identify the poor households in each community [40,70-72].

The CWR's method briefly entailed three sequential steps: First, a focus-group discussion (FGD) with knowledgeable people within the community was conducted to understand the key local criteria or characteristics of poverty and then to apply these criteria to identify main poverty groups in the community. Second, the households ranking was conducted. In this exercise, cards with the names of household heads (HHH) were divided into three different color piles. This ranking of households was performed separately by 3 key-informants, each one with a pile of card. These key informants were selected by the participants of the FGD as being knowledgeable of the socio-economic status of each HHH in the village or the Nouna's sub-sector. In the last step, consensus among the key informants was reached. Three types of consensus were noted: Either there was an agreement in the rankings of households, or a

pairwise agreement; or again, the HHHs were selected by only one of the three key-informants. In that last case, the names of HHH were reviewed together by all the three key-informants, to ensure that they all agreed on their assigned rank. The list of selected HHHs for subsidies was elaborated and announced to the participants in the FGD [40,72].

The consensual community-based definition of poverty was the key-element used by each key-informant to classify the HHH in the predetermined poverty groups. The useful contribution of the community allowed the steering committee of the CBHI scheme to use this method to identify poor households for premium subsidies to enroll in CBHI.

This paper aims to provide a new set of poverty criteria, based on community perception, which could be used to build systematic indicators for surveys aimed at measuring and alleviating poverty in the Nouna region.

Targeting the poor using a community-based definition of poverty, as stated in the paper, could also be useful for most community health insurances in the region with limited financial resources. Finally, the paper attempts to contribute to the debate in the research area about how poverty should be defined. The alternative definitions of poverty provided by community members, that are not in purely financial terms, are highlighted. The paper presents the definition, criteria and poverty groups defined by community members for targeting the poor in Nouna's health district.

## **Methods**

This is a descriptive and exploratory study using qualitative methods.

### **Study area**

Our study took place in 2009, in 41 villages and 7 sectors of Nouna's town, located in Nouna's Health Demographic Surveillance Site (NHDSS) with an area of 1756,244 km<sup>2</sup>. It should be noted that Nouna's town is a semi-rural setting [73]. The NHDSS was established in Nouna's Health District, which is one of the six districts of the health region of Mouhoun. The region is a dry orchard savannah and has a sub-Saharan climate with a mean annual rainfall of 796 mm (range 483–1,083 mm) over the past five decades [73]. It covers the administrative boundaries of the province of Kossi with an area of 7464.44 km<sup>2</sup>. The NHDSS has 34 peripheral health facilities (CSPS) and a district hospital (CMA). The mostly rural population of the multi-ethnic Kossi's province consists predominantly of subsistence farmers and cattle keepers [73]. The dilapidated road network made economic activity difficult throughout the province (See Additional file 1).

### **Study population**

The study target population consisted of all the HHH regardless of gender or membership status to the insurance scheme in the 41 villages and 7 sectors of Nouna's town where CBHI was implemented. The household was defined as the socio-economic unit in which individuals live together, share resources and jointly satisfy their needs under the authority of a HHH [74]. The database of NHDSS was used to identify all the 7,807 heads of household in 2009, in the settlement area of CBHI. The main ethnic groups in the study setting were the Marka (38%), Bwaba (25%), Mossi (18%), Fulani (8%) and Samo (7%) [73]. The Dioula

language serves as a lingua franca, permitting communication between the different ethnic groups in this region [73]. In terms of religious beliefs, the study population consists of Muslims, Catholics and Protestants.

## **Method**

Focus Group Discussions (FGD) were conducted in 41 villages and 24 sub-sectors of Nouna's town, totaling 65 FGDs. Seven sectors of Nouna's town were divided into sub-sectors due to the large number of households in these sectors.

### a) Size and composition of participants for the FGD

The number of participants in FGD met the following premises: a small group (less than 4 participants) could be less productive because participants are more sensitive to the dynamic exchanges between them. On the other hand, a larger group (more than 12 participants) could be difficult to control with a high risk for participants to become shy, leading to the creation of sub-groups and to the deterioration of the conversation [75,76]. Thus, the FGD size was between 4 and 12 participants. On average, we had 10 participants per FGD.

The FGD participants had lived long enough in the community and had a good knowledge of the socio-economic status of each household. They could be opinion leaders like the chief of the village, religious leaders, elders, etc. They could also be leaders of associations or groups like farming cooperative, artisan groups and associations of women. The FGD participants included both men and women regardless of age, ethnicity and religion. The women in the NHDSS have previously been involved in mixed FGD, where both men and women participate, and therefore, were comfortable voicing their opinions in such discussions. Women represented about 1/3 of the participants in our FGD.

### b) Information strategies

The Social Mobilization Unit of the CBHI, operating at different levels (central and local), informed the community members about the community wealth ranking exercise and gave information about the venue and time when it would be undertaken in the village. Community members were also informed via local radio networks and door-to-door information was conveyed by local contacts of the CBHI scheme. When appropriate, drummers were used for announcing the meetings in the villages.

### c) Running of FGD:

The field workers in NHDSS knew the two main spoken languages (Dioula and Bwamu) in the study setting. They had extensive experience in conducting FGD in this region. After a consensus among the participants on the language, the principal investigator and field workers facilitated the discussions. The discussions were mainly conducted in Dioula, but we noticed that some participants felt more comfortable in giving their point of view in Bwamu, which is the second main spoken language.

The participants were asked to discuss their ideas on poverty – how they define poverty, criteria they use to differentiate poverty groups and the terms they use for describing poverty. Exchanges conducted with participants on various topics related to poverty were consensus-

based. The main criteria provided by the participants to define poverty were listed and presented to them in order to get their consensus.

d) Data analysis:

The discussions during the FGDs were audio recorded and then translated and transcribed into French by transcribing agents knowledgeable in the two main local languages in which the FGDs were held. The transcripts were then typed by the Data Entry Unit of CRSN.

The Content analysis, aiming to categorize verbal data for the purpose of classification, summarization and tabulation, was used to account for what was said by participants in the most possible objective and reliable way. Two levels were considered for the content analysis, one was descriptive about the data and the other interpretative about what the data meant.

After reading the transcripts, semantic units, or themes, were extracted, based on the frequency of use by participants to express an idea or opinion. These themes were subsequently classified into categories, or containers, related to the objectives of the study. In our study, the categories were consistent with the poverty criteria as defined by the community members.

The manual coding method was used to label data in Nvivo. First, some emerging themes in terms of the frequency of use were put into containers called free nodes. Then, from the text, the related recurrent themes were dragged and dropped into the nodes. Some free nodes, therefore, were grouped into tree nodes according to the research objectives. Some direct, representative and relevant quotations were used verbatim within the text to enlighten emerging themes. The software NVivo 9.2 (QSR property limited. From 1999 to 2011) was used for this qualitative analysis. Analysis was done by the principal investigator.

e) Ethical approval

The study protocol was approved by the institutional Research Ethics Committee of CRSN (2005–005 /CLE/CRSN) and as a component of D2 project by the ethical committee of the University of Heidelberg (Medical school) under the number (130 / 2002). FGD participants' consent was obtained before the start of each FGD. Emphasis was on the confidentiality of data within each village, in order to avoid information leaking from one village to another, and also to avoid disclosing information about poorest households.

## Results

In general, poverty was seen in this study area as scarcity of basic needs, vulnerability, deprivation of capacities, powerlessness, voicelessness, indecent living conditions, and absence of social capital and community networks for support in times of need. The definition of poverty was mostly associated to the geographical, social and cultural contexts of daily life by the participants. A HHH and farmer in the village of Barakuy reported: 'The wealthy in one village may be considered poor if we change the benchmark' (Male, HHH, 41 years old). This assertion was also raised by several participants in many other villages. The complexity of poverty issues was also raised when we tried to define and identify those poor or wealthy. The village's informer in Bourasso who participated in many activities and



studies implemented in the village stated 'In a meeting if you ask the poor to raise their hand, no one will do it. In the meantime if you direct the question to the wealthy ones, the behaviour will be the same' (Male, 48 years old).

### **Local names and meanings of poverty**

The word poverty, when translated into local languages, carried different connotations. In their local languages, communities used words that were full of meaning in their ways of designating poor and rich people. The names provided to point out a poor person were basically a description of the situation or the behavior of that person. According to the various ethnic groups, the commonly used names and meanings given to poor people are listed in Table 1.

**Table 1 Local names full of meanings of poverty**

Local languages	Local names of the poor	Translation into English « literal » and « meanings »	Local name of the wealthy	Translation into English « literal » et « meanings »
Dioula	Déssébagato	«déssê = has tried in vain/ bagato = person » « <i>the one who is not able, who has not succeed, who has failed</i> »	Nafolotigui	« nafolo = wealth/tigui = owner » « <i>The one who has wealth, who has the fortune</i> »
	Faantan (word from Faangatan)	« faanga = authority, power/ tan = lack » « <i>The one who is powerless, who has nothing</i> »	Faanman (word from Faangaman)	«faanga = authority, power/ man = owner » « <i>the one who is leader, who has power and wealth</i> »
	Tiguèlankoro	«tiguê = hands/ lankoro = empty» « <i>the one who owns nothing</i> »	Séétigui	« sée = capability, power/ tigui = owner » « <i>the one who is able, who has power</i> »
			Fintigui	« fin = thing/ tigui = owner » « <i>the owner, the one who has wealth</i> »
			waritigui	« wari = money/ tigui = owner » « <i>the one who has money, the wealthy</i> »
Marka	Paantan (word from Paangatan)	« paanga = authority, power/ tan = lack » « <i>the one who owns nothing, who is a needy</i> »	Paaman (word from Paangaman)	«paanga = authority,power/man = owner » « <i>the one who is leader, who has power and wealth</i> »
Moré	Nongsoaba	« nongo = tribulation/ soaba = owner » « <i>the one who,suffer, who is a needy</i> »	Pinti	« pin = thing/ ti = owner » « <i>the owner</i> »
	Taalga	« taalga = a needy» « <i>the one who has nothing, who has to beg to survive</i> »	Raakanre(word from Rahawakanre)	«kanre = prosperity/ rahawa = the man » « <i>the one who thrives, who has happiness</i> »
			Liguidisoaba	«liguidi = money/ soaba = owner » « <i>the one who has money, who is wealthy</i> »
			Arzeksoaba	« arzeka = fortune, prosperity/ soaba = owner » « <i>the one who thrives, who can afford</i> »
Bwamu	Baabasso	« baaba = needy/ so = owner » « <i>the one who is a needy, who has to beg to survive</i> »	Séébasso	« sééba = capability, power/so = owner » « <i>the one who is able</i> »
	Fioro	« fio = needy/ ro = owner »	Biobasso	«bioba = thing/ so = owner » « <i>the owner, the one who has wealth</i> »
Fulani		« <i>the one who is a needy, who has to beg to survive</i> »		
	Taalka	« taalga = needy» « <i>the one who has nothing, who is a needy</i> »	Djomdjawdi	« djawdi = wealth/djom = owner » « <i>the one who has wealth, who has power</i> »
	Missikina	« Missi = beef/kina = lack » « <i>the one who doesn't own beef</i> »	Djomnadjê	« nadjê = beef/djom = owner » « <i>the one who owns beefs</i> »
Samo	Nyaagoodo Douoba (word from Dounbamba)	« Nyaagaade = needy/ do = owner » « <i>the one who is a needy</i> » « doun = will/bamba = non achieved » « <i>the one who cannot solve his own problem without any support</i> »	Padina	« Pa = money/ dina = owner » « <i>the one who has money, who is wealthy</i> »

## Number and types of poverty groups identified

The participants in the FGDs were asked to identify the numbers and types of poverty groups in their villages or Nouna's sub-sectors. The results showed that 61 (94%) FGDs identified mainly three poverty groups: poor, intermediates and wealthy households. Only 3 (5%) FGDs referred to two poverty groups: poor and wealthy; and 1 FGD listed four types of poverty groups: very poor, poor, intermediate and wealthy.

## Relative poverty criteria for each poverty group

The links between the identified poverty groups and the related criteria is summarized in Table 2.

**Table 2 Relative poverty criteria for each poverty group**

Poverty groups	Very poor	Poor	Intermediate	Wealthy
<b>Criteria</b>				
Has insufficient food	++	+		
Has nothing	++	+		
Is not in good health status preventing to work	++	+		
Is unable to solve his own problem by himself	++	+		
Has no money	++	+		
Is unable fill his medical prescriptions	++	+		
Has no social network	++	+		
Is not owner of livestock	++	+		
Wear poor clothes and live in poor conditions	++	+		
Is very old and without support	++	+		
Has no poultry	++	+		
Has enough food			+	++
Can do or get anything			+	++
Is in good health status			+	++
Is able to solve his own problem and help somebody else			+	++
Has enough money			+	++
Is owner of livestock			+	++
Has nice clothes and good living conditions			+	++
Can use health services			+	++

+: The cross indicates that a link exists between the criterion and the poverty group.

++: The two crosses indicate that a strong link exists between the criterion and the poverty group.

The shaded area: indicates that the criterion is not related to the poverty group.

## *Poor group*

The criteria that defined a person as poor were mainly: Has insufficient food, has nothing, is not in good health status preventing work, is unable to solve his own problems by himself. Besides this main group of poverty criteria, some others were also mentioned by community members to refer to the poor: has no money, is unable to fill his medical prescriptions, has no social network, is not an owner of livestock, wears poor clothes and lives in poor conditions, is very old and without any support, and has no poultry. The FGD's participants decided that anyone who fulfils at least one of the poverty criteria mentioned by them is defined as 'poor'.

All these criteria contributed to making the poor powerlessness, voicelessness and vulnerable. Some criteria were classified as "others" and were related to the misfortune, the lack of

means of transportation and the disappointment of the poor people. The above information were translated into an algorithm to define poverty in the study area (see Figure 1).

---

**Figure 1 Algorithm of the definition of poverty by community in Nouna, Burkina Faso.**

→: contributes to. ↔: are interconnected.

---

Not having a sufficient daily meal for a household was identified as the criterion which mainly emerged from the discussions with the participants to designate the poor. This was stated by many participants, among them a farmer in the village of Boune who said: ‘The poor is the one who cannot get his daily meal and eat his fill’ (Farmer, male, 54 years old). Beside insufficient food, the absence of ownership, translated into having nothing by community members, was mentioned several times. Poverty was also related to the poor health status of the household’s head. Indeed, in order to perform their farming activities for most of them, the HHHs needed to be in good physical and mental health. Otherwise, they were considered poor, as pointed out by a farmer in the village of Bourasso: ‘The poor is the one who is lying down, who cannot do anything and who cannot even get up to work’ (Farmer, male, 49 years old). The poor were also seen as unable to solve their own problems, making them dependent on the community. A female HHH and farmer in the Village of Dara raised the fact that the poor had no point of view in the main decisions of the village, otherwise, even if they gave their opinion, it was not considered: ‘When you are poor, you are not considered, nobody wants to invite you for the meetings in the village; you rather stay at home because they will never consider what you would have said even if you were there’ (Female, HHH, 37 years old).

The percentage in the use of these criteria by community members to designate the poor during the 65 FGDs are showed by Figure 2.

---

**Figure 2 Percentage in the use of criteria to define poverty.**

---

***Intermediate group***

The intermediate HHH were those who had their daily meal, those who did not need to beg, in respect to food, materials of agricultural work, means of travel, etc. This group is characterized by those who have sufficient means for themselves, but may not be able to help needy ones: This was illustrated by a male, local head of CBHI in the village of Labarani: ‘People in intermediate group can get their daily food; they are not considered poor, but they are not however considered rich’ (Male, 39 years old).

***Wealthy group***

The last group is composed of the wealthy households that are characterized by the opposite of all that was cited for the preceding groups.

From the debates with community members, it came up that the wealthy fulfilled at least one of the following wealth criteria: is able to solve his own problem and help someone else, has enough money, is owner of livestock, has enough food, can do or get anything.

Besides the main criteria, the wealthy were also designated by another category of criteria: has enough food, can do or get anything, is in good health status, wear nice clothes and good life condition, can use health services.

Some criteria of wealth classified as “others” referred to: Has modern transportation means like motorcycle and car and has built a house in block. Wealthy people are self-sufficient in their life. They are able to cope with their own problems and those from needy ones, said a housewife in Lei’s Village. ‘In our village, if you see someone who can solve his own problem and additionally can support poor is called wealthy’ (Female, 35 years old).

‘The livestock are part of the wealth, since money is not a tree that can be planted and reap the fruit. These are things that we can barter or we sell them to get enough money and become wealthy’ (Male, 43 years old). This assertion, which highlights the ownership of livestock as evidence of wealth, was from a male and HHH who was both a farmer and stockbreeder in Diamasso’s village.

Likewise, community members put great emphasis on the importance of health in their everyday life as noted a farmer and chief of Solimana village. ‘The wealthy is the one who is healthy since health is the most important wealth’ (Male, 61 years old). They also focused on school knowledge and monthly wages for those in the sectors of Nouna town to designate the wealthy. A jobless man without any school degree, asserted: ‘For us, someone who can be called wealthy is the one who has monthly pay, who has some school knowledge’ (Male, 36 years old).

The following Figure 3 showed the percentage in the use of these criteria by community members to designate the wealthy during the 65 FGDs implemented.

---

**Figure 3 Percentage in the use of criteria to define wealthy.**

---

### **Relative poverty criteria for each poverty group**

When we applied the local definition of poverty provided by the community members, the groups most exposed to poverty were identified. Although community members believed that poverty makes no difference and could affect anybody in general, they recognized, nevertheless, that poverty tended to affect mainly the elders, followed by the ill and disabled people who could no longer work, the women, and finally orphans and children without support.

## **Discussion**

Discussing poverty issues in a community is a very sensitive subject and needs to be approached with great caution. Mckendrick stated, in the case of UK, that talking about poverty is never neutral and the language may be sexist, ageist, racist or homophobic if not used appropriately [77,78]. Some other authors also noted the sensitive nature of poverty [79-82].

Community members in Nouna identified mainly three poverty groups: poor, intermediates and wealthy. We noted that only one FGD indicated 4 poverty groups including the very poor. But on the other side, no FGD mentioned the wealthiest group as a poverty group to be

considered since they rejected the fact that there were wealthiest people among them. We also noted that these community members did not make any great difference between the poor and the very poor. For them the two groups faced the same difficulties with only slight differences. The Food and Agriculture Organization of the United Nations (FAO), in a study implemented in the Horn of Africa, also found three poverty groups: the lowest levels of Wealth Index, the intermediate Wealth Index and the high Wealth Index [83]. Kalisa in Rwanda studied the characterization of farming systems in southern Rwanda and found three wealth categories among the farmers: Well-off farmer, Intermediate farmer and the Poor farmer [84].

The community-based definition of poverty that we used in our study allowed us to better understand poverty from the view of the community. Souares, in Nouna, targeted the poor households for insurance enrolment subsidies by using a community-based definition of poverty [40]. The same exercise was performed in Ghana by Aryeetey who also used the community concepts of poverty to provide premium exemptions in Ghana National Health insurance scheme [46]. Many other authors have also used this community-based definition of poverty to target the poor [39,55,63,80].

Making community central to the definition of perceived poverty was guided by the fact that community members might have a better feeling for poverty and might understand all the arguments for that. This was also mentioned by some other authors [43,46,85,86].

We were convinced that the poverty criteria provided by community members reflected a realistic situation experienced by them. They were the ones concerned with poverty issues, so they were the ones in the best position to express what they felt in their own words and languages.

Most of the criteria highlighted in our study referring to the poor, like the insufficient daily meal, the ill-health ...etc., were also mentioned in the study of Aryeetey in Ghana. 'The poorest were unable to afford three meals daily and meals were often made up of cooked cassava...' [46]. She also indicated, as we mentioned in our study, that it was common to see the poorest wearing miss-matched old plastic bathroom slippers and worn out, often dirty clothes.

In our study we pointed out that poor people were sometimes excluded from the main decision making because of their poverty status. This situation was also noticed by Aryeetey in Ghana. 'The poorest people were usually not included in group decision making processes either at the family or community level' [46].

Our study showed, as did several other authors, that involving community members in the definition of poverty may allow poor people to make their voices heard [20,59,60,86-90], as they are often not considered in their own society. This situation of marginalization was highlighted in 2010 by Salmen [91,92]. Narayan in 2000 [54] recognized that economically marginalized groups also tend to be socially marginalized. In Kenya, Cameroon, Gabon and Zambia, he reported previously that poor people felt powerless and that they were generally voiceless [93].

In the 41 villages where our study took place, the concepts of monetary incomes and expenses remain little utilized. So using community concepts to define poverty was more informative for our study than using a monetary assessment.

The same observation was made by Saul in 1999. The community's way of defining poverty is, thus, very important and quite relevant, in so far as the main determinants of formal poverty assessment, such as incomes and expenses, are not generally well-known in monetary terms in this rural context [94]. Coudouel also found in her research that measuring intrahousehold allocations and inequality was difficult, since the available data typically failed to directly capture individual spending and consumption [95].

Alatas found in Indonesia that the results of community-based methods were more strongly correlated with individual community members' self-assessments of their own status than a metric of poverty based purely on consumption [63]. This has also been highlighted by Chambers and Salmen [37,92].

Our study also highlighted, as Chambers did, some aspects of poverty referring to "vulnerability and powerlessness", which are not captured in conventional surveys [36,37,96,97]. The scarcity of basic needs as referring to the poor was also indicated by many authors [7,91,98-100].

We might assert about the process aimed at targeting the poor, that using the understanding of "who was poor" and "what were the defined poverty groups" provided by community members as key-elements for the selection of those poor, was less costly in terms of time and resources. Chambers, in 1994, published that this community-based method appeared to be an important cost-effective alternative to the normal surveys, particularly with regard to the time and budget used for the surveys [37].

We would like to mention three implications regarding our research. The first implication is the important role and place of community members in defining 'perceived' poverty and towards poverty alleviation in Nouna health district. Poverty was mainly defined by community members outside traditional economic descriptions, this should lead policies in Burkina Faso to put greater emphasis on the contribution of Community in defining poverty and targeting poor for poverty alleviation. The contribution of the paper to the debate about how poverty should be defined, might then be considered. The second implication is that, using community-based definitions of poverty in targeting the poor for subsidies or exemption within a community, may be cost-effective for organizations, like community-based health insurances, with limited financial resources. The third implication is that our research provides a new set of poverty criteria as seen and perceived by the community that could be used to build systematic indicators for surveys aiming to measure and alleviate poverty in the Nouna region. Indeed, Burkina Faso in its Strategy for Accelerated Growth and Sustainable Development (SCADD) from 2011 through 2015, which replaced the Poverty Reduction Strategy Paper, aims to alleviate extreme poverty and hunger as specific objective number 2 [101]. Our research could help Burkina Faso policy-makers better target the poor and more effectively address poverty issues in community areas.

We are confident that any policy or program addressing poverty issues in a specific community should consider how that specific community defines poverty.

Some limitations of our study should be mentioned, since we made the choice of inviting knowledgeable people within the community to discuss on its behalf. It was certain that the participants invited to take part in the discussions for the definition of poverty and poverty groups gave their own perceptions and concepts, which might be identical or slightly different from the general community view. Also, the study listed some relevant criteria

referring to poverty within the community, without building systematic indicators for a poverty survey. Some nuances between poverty groups ‘poor vs. very poor’ and ‘intermediate vs. wealthy’ were not easy to define by community members.

## **Conclusion**

The definition of poverty by community members to be used in the targeting of the poor, seems to be one of the most adequate ways in a setting where people live in a community, sharing daily realities, like in Nouna’s health district. For most community-based health insurance schemes with limited financial resources, and particularly the CBHI in Nouna, using a community-based definition of poverty in the targeting of the poorest might be a less costly alternative.

Our study allowed us to elicit a new set of criteria that could be used to build systematic indicators for surveys aiming to measure and alleviate poverty in the Nouna region. This research could help Burkina Faso policy-makers better target the poor and more effectively address poverty issues in community areas, by taking into account the perceptions and criteria of poverty as seen and defined by these communities in addition to applying the unified questionnaire on basic welfare indicators already in use in the country.

In the context of establishing subsidies for the poor in a particular community, the involvement of this community in defining who is eligible and the targeting of these eligible people may appear to be an essential element for the acceptance of the potential subsidies.

Indeed the targeting of the poor in Nouna’s health district, using community definition of poverty, aimed to provide insurance premium subsidies to those selected as poor.

We assert that policies aiming at poverty alleviation in a given community, should consider the contribution of that community in defining and alleviating poverty. Our study attempts to contribute to the debate in area of research about how poverty should be defined.

## **Abbreviations**

CBHI: Community-based health insurance; CLE: Comité Local d’Ethique; CMA: Centre Médical avec Antenne chirurgicale; CSPS: Centre de Santé et de Promotion Sociale; CRSN: Centre de Recherche en Santé de Nouna; CWR: Community wealth ranking; FAO: Food and agriculture organization of the United Nations; FGD: Focus group discussion; HHH: Head of household; IMF: International monetary fund; MAED: Ministère des Affaires Economiques et du Développement (Niger); MED: Ministère de l’Economie et du Développement (Burkina Faso); NHDSS: Nouna health demographic surveillance site; QSR: Qualitative solutions and research; SCADD: Strategy for accelerated growth and sustainable development; UN: United Nations; UNDP: United Nations development programme; VS: Versus.

## **Competing interests**

The authors declare that they have no competing interests.



## **Authors' contributions**

SG: carried out the field research, performed the qualitative analysis, and drafted the manuscript. SAu: participated in the design of the study and the analysis, revised critically the manuscript. SAi: participated in the design of the study, revised the manuscript. PD: helped for the analysis, revised critically the manuscript. BG: revised critically the different versions of the manuscript. SR: conceived the study, assisted in the analysis and contributed parts of the respective text. All authors read and approved the final manuscript.

## **Acknowledgements**

This paper has been written with both the technical and financial support of the University of Heidelberg in Germany and the Centre de Recherche en Santé de Nouna in Burkina Faso.

We are also grateful to INDEPTH Network for accepting improving our skills in scientific writing area.

We would finally like to thank all the people who contributed directly or indirectly to making this paper possible, however we refrain from citing them for fear of omitting any.

## **Funding**

The work was supported by the Deutsche Forschungsgemeinschaft (German Research Foundation) through the Sonderforschungsbereich 544 'Control of Tropical Infectious Diseases' and the German Academic Exchange Service.

## **References**

1. Mestrum F. Poverty reduction and sustainable development. *Environ Dev Sustain.* 2003;5:41.
2. Sumner A, Tawari M. The MDGs and Beyond. In: *After 2015 Int Dev Policy a Crossroads.* 2009. p. 43–73.
3. Gentilini U, Webb P: How are we doing on poverty and hunger reduction? A new measure of country performance. *Food Policy* 2008;521–532.
4. UNDP. *Millennium Development Goals: A Compact among Nations to End Human Poverty.* New York: Oxford University Press; 2003. p. 375.
5. Cissoko Ramatou KT. Participation des acteurs sociaux et gouvernance d'Etat, le cas du cadre stratégique de lutte contre la pauvreté au Mali. *Polit africaine.* 2005;99:142–54.
6. Assilamehoo E. Le processus d'élaboration du document stratégique de réduction de la pauvreté au Bénin. *Afr Contemp.* 2003;208:31–45.
7. Shaffer P, Shaffer P. *New Thinking on Poverty: Implications for Poverty Reduction Strategies*, vol. 65. UN: Department of Economics and Social Affairs; 2008. p. 33.

8. Ellis F, Mdoe N. Livelihood and rural poverty reduction in Tanzania. *World Dev.* 2003;31:1367–84.
9. Mackinnon J, Reinikka R: Lessons from Uganda on Strategies to Fight Poverty. World Bank, Policy Res. Work Pap, 2000, p.51. <http://dx.doi.org/10.1596/1813-9450-2440>
10. Ruggles P, Williams R. Longitudinal measures of poverty: accounting for income and assets over time. *Rev Income Wealth.* 1989;35:225–43.
11. Madden D. Relative or absolute poverty lines: a new approach. *Rev Income Wealth.* 2000;46:181–99.
12. Ali AG. Dealing with poverty and income distribution issues in developing countries: cross-regional experiences. *J Afr Econ.* 1998;7:77–115.
13. Ram R. Roles of income and inequality in poverty reduction: recent cross-country evidence. *J Int Dev.* 2007;19:919–26.
14. Thorne D. Poverty and income in Appalachia. *J Appalach Stud.* 2004;10:341–57.
15. Rojas M. Experienced poverty and income poverty in Mexico: a subjective well-being approach. *World Dev.* 2008;36:1078–93.
16. Simler KR, Arndt C. Poverty comparisons with absolute poverty lines estimated from survey data. *Rev Income Wealth.* 2007;53:275–94.
17. Belhadj B, Limam M. Unidimensional and multidimensional fuzzy poverty measures: new approach. *Econ Model.* 2012;29:995–1002.
18. Nolan B, Whelan CT. Using non-monetary deprivation indicators to analyze poverty and social exclusion: lessons from Europe? *J Policy Anal Manag.* 2010;29:305–25.
19. Sameti M, Esfahani R, Haghghi H. Theories of poverty: a comparative analysis. *arabianjbmrcm.* 2012;1:1–16.
20. Serr K. Voices from the bottom. *Aust Soc Work.* 2004;57:137–49.
21. Bresson F, Labar K. A multidimensional analysis of poverty in China from 1991 to 2006. *China Econ Rev.* 2011;22:646–68.
22. Undp. Human development report 2011. *Hum Dev.* 2011;21:45–68.
23. Lok-dessallien R: Review of Poverty Concepts and Indicators. UNDP Soc Dev Poverty Elimin Div Poverty Reduct Ser from <http://www.undp.org/povertypublicationspovReview.pdf> 1999:21.
24. Alkire S, Foster J. Counting and multidimensional poverty measurement. *J Public Econ.* 2011;95:476–87.

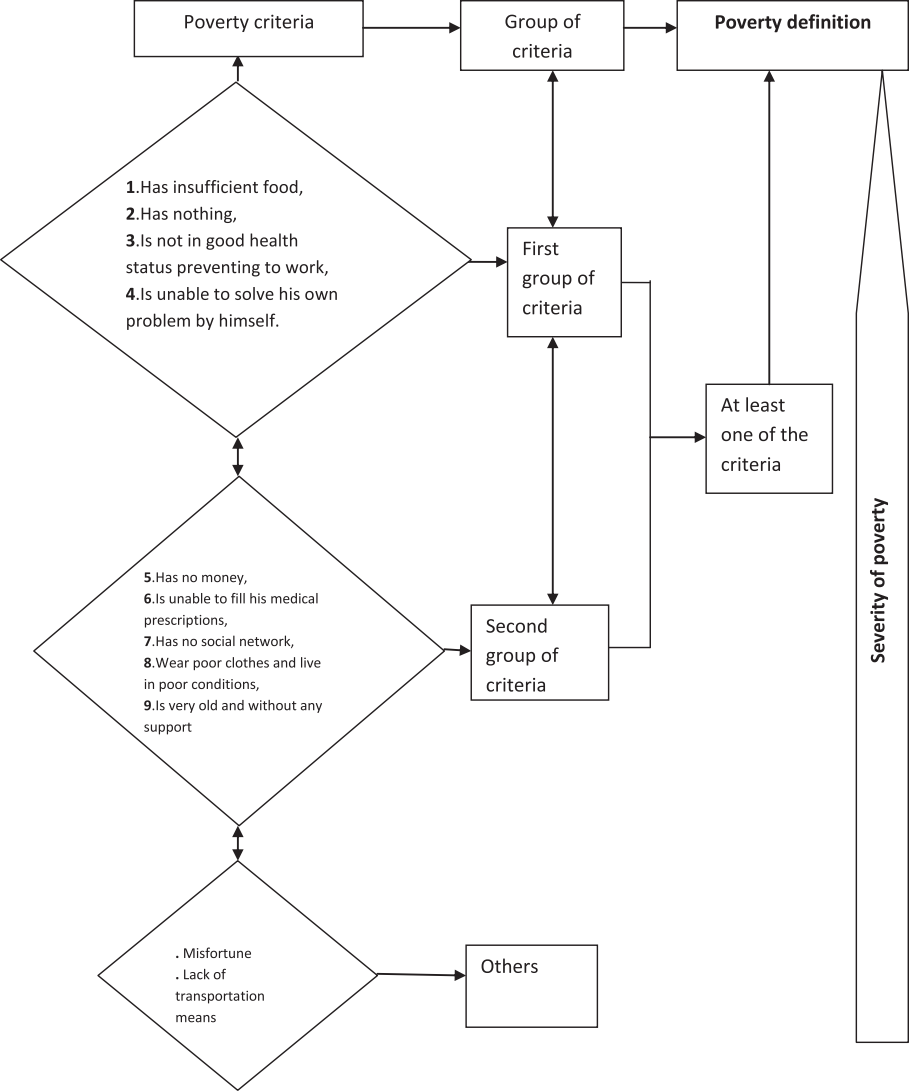
25. Bossert W, Chakravarty SR, D'Ambrosio C. Multidimensional poverty and material deprivation with discrete data. *Rev Income Wealth*. 2013;59:29–43.
26. Cohen A. The multidimensional poverty assessment tool: a new framework for measuring rural poverty. *Dev Pract*. 2010;20:887–97.
27. Alkire S, Roche JM, Seth S: Multidimensional Poverty Index 2013. OPHI 2013:1–8.
28. Deutsch J, Silber J. Measuring multidimensional poverty: an empirical comparison of various approaches. *Rev Income Wealth*. 2005;51:145–74.
29. Abraham RA, Kumar KSK. Multidimensional poverty and vulnerability. *Econ Polit Wkly*. 2008;43(77):79–87.
30. Kreidl M. Perceptions of poverty and wealth in western and post-communist countries. *Soc Justice Res*. 2000;13:151–76.
31. Schimmel J. Development as happiness: the subjective perception of happiness and UNDP's analysis of poverty, wealth and development. *J Happiness Stud*. 2009;10:93–111.
32. Aoki O. Perceptions of poverty in Japan: constructing an image of relative poverty contrasted against an image of extreme poverty. *J Poverty*. 2007;11:5–14.
33. Hartog J. Poverty and the measurement of individual welfare: a review of A. J. M. Hagenars' "The Perception of Poverty." *J Hum Resour*. 1988;23:243–66.
34. Bhuiya A, Mahmood SS, Rana AKMM, Wahed T, Ahmed SM, Chowdhury AMR. A multidimensional approach to measure poverty in rural Bangladesh. *J Health Popul Nutr*. 2007;25:134–45.
35. World Bank. *World Development Report 1990*, vol. 4. New York: Oxford University; 1990. p. 10–1.
36. Chambers R, Mascarenhas J, Malhotra KC, Poffenberger M, Arunabha B, Debal D, Johansson L, Holben A, Cabarle B, Zazueta A: Rapid Rural Appraisal (RRA) and Participatory Rural Appraisal (PRA) in Asia, Africa and Latin America. *For Trees People Newsl*. 1992:4–35.
37. Chambers R. Participatory rural appraisal (PRA): challenges, potentials and paradigm. *World Dev*. 1994;22:1437–54.
38. Narayan-Parker D: Ch. 9: Participatory Rural Development. In *Agric Environ Perspect Sustain Rural Dev*; 1998.
39. Rai AS. Targeting the poor using community information. *J Dev Econ*. 2002;69:71–83.
40. Souares A, Savadogo G, Dong H, Parmar D, Sié A, Sauerborn R. Using community wealth ranking to identify the poor for subsidies: a case study of community-based health insurance in Nouna, Burkina Faso. *Health Soc Care Community*. 2010;18:363–8.

41. Chambers R. The origins and practice of participatory rural appraisal. *World Dev.* 1994;22:953–69.
42. Misturelli F, Heffernan C. Perceptions of poverty among poor livestock keepers in Kenya: a discourse analysis approach. *J Int Dev.* 2001;13:863–75.
43. Ravallion M, Lokshin M. Identifying welfare effects from subjective questions. *Economica.* 2008;68:335–57.
44. Ravallion M. How relevant is targeting to the success of an antipoverty program? *World Bank Res Obs.* 2009;24:205–31.
45. Kabubo-Mariara J, Ndenge GK, Mwabu DK. Determinants of children’s nutritional status in Kenya: evidence from demographic and health surveys. *J Afr Econ.* 2009;18:363–87.
46. Aryeetey GC, Jehu-Appiah C, Kotoh AM, Spaan E, Arhinful DK, Baltussen R, et al. Community concepts of poverty: an application to premium exemptions in Ghana’s National Health Insurance Scheme. *Global Health.* 2013;9:12.
47. Heyer J. The complexities of rural poverty in sub-Saharan Africa. *Oxford Agrar Stud.* 1996;24:281–97.
48. Bourguignon F, Chakravarty S. The measurement of multidimensional poverty. *J Econ Inequal.* 2003;1:25–49.
49. Amis P. Attacking poverty: but what happened to urban poverty and development? *J Int Dev.* 2001;13:353–60.
50. Dayal E. Rural poverty in India: a regional analysis. *J Rural Stud.* 1989;5:87–98.
51. Wodon QT. Regional poverty lines, poverty profiles, and targeting. *Appl Econ Lett.* 1999;6:809–12.
52. Daimon T. The spatial dimension of welfare and poverty: lessons from a regional targeting programme in Indonesia. *Asian Econ J.* 2001;15:345–67.
53. Zhang Y, Wan G. How precisely can we estimate vulnerability to poverty? *Oxford Dev Stud.* 2009;82:277–87.
54. Narayán D: La voz de los pobres?' Hay alguien que nos escuche. *Publicación del Banco Mundial 1ra ed(en español) México Ediciones Mundi Prensa 2000:30.*
55. Collins SB. An understanding of poverty from those who are poor. *Action Res.* 2005;3:9–31.
56. Ashley C, Boyd C, Goodwin H. Pro-poor tourism : putting poverty at the heart of the tourism agenda. *Significance.* 2000;51:1–6.
57. Blake J. Overcoming the “value-action gap” in environmental policy: tensions between national policy and local experience. *Local Environ.* 1999;4:257–78.

58. Chokor BA. Perception and response to the challenge of poverty and environmental resource degradation in rural Nigeria: case study from the Niger Delta. *J Environ Psychol.* 2004;24:305–18.
59. Johnson H. Voices of the poor. Can anyone hear us? *J Int Dev.* 2001;13:377–9.
60. Narayan-Parker D. *Voices of the Poor: Poverty and Social Capital in Tanzania*, vol. 20. Washington, D.C: World Bank Publications; 1997. p. 80. xi.
61. Narayan D, Chambers R, Shah MK, Petesch P. *Voices of the Poor: Crying out for Change*, vol. 2. New York: Oxford University Press; 2000. p. 314.
62. Smit W, Carey S, Mayekiso M, Zondi P. *Voices of the Poor: Synthesis and Recommendations*. Cape Town: Development Action Group; 2007. p. 1–28.
63. Alatas V, Banerjee A, Olken BA, Tobias J, Hanna R. Targeting the poor: evidence from a field experiment in Indonesia. *Am Econ Rev.* 2012;102:1206–40.
64. Lachapelle P, Austin E, Clark D. Community strategic visioning as a method to define and address poverty: an analysis from select rural Montana communities. *J Ext.* 2010;48:13.
65. De Allegri M, Kouyaté B, Becher H, Gbangou A, Pokhrel S, Sanon M, et al. Understanding enrolment in community health insurance in sub-Saharan Africa: a population-based case-control study in rural Burkina Faso. *Bull World Health Organ.* 2006;84:852–8.
66. De Allegri M, Sanon M, Sauerborn R. “To enrol or not to enrol?”: A qualitative investigation of demand for health insurance in rural West Africa. *Soc Sci Med.* 2006;62:1520–7.
67. Dong H, Mugisha F, Gbangou A, Kouyate B, Sauerborn R. The feasibility of community-based health insurance in Burkina Faso. *Health Policy (New York).* 2004;69:45–53.
68. Sommerfeld J, Sanon M, Kouyaté BA, Sauerborn R. Perceptions of risk, vulnerability, and disease prevention in rural Burkina Faso: implications for community-based health care and insurance. *Hum Organ.* 2002;61:139–46.
69. Dong H, De Allegri M, Gnawali D, Souares A, Sauerborn R. Drop-out analysis of community-based health insurance membership at Nouna, Burkina Faso. *Health Policy.* 2009;92:174–9.
70. Kevane M, Conning J. Community-based targeting mechanisms for social safety nets: a critical review. *World Dev.* 2002;30:375–94.
71. Adams AM, Evans TG, Mohammed R, Farnsworth J. Socioeconomic stratification by wealth ranking: Is it valid? *World Dev.* 1997;25:1165–72.
72. Savadogo G, Souares A, Sié A, Sauerborn R. Les indigents et la mutuelle de santé de Nouna (Province de la Kossi). In: *Les Indigents Polit santé en Afrique Expériences enjeux conceptuels*, Investigat. Louvain la neuve: Editions Academia l’Harmattan. 2013. p. 407–25.

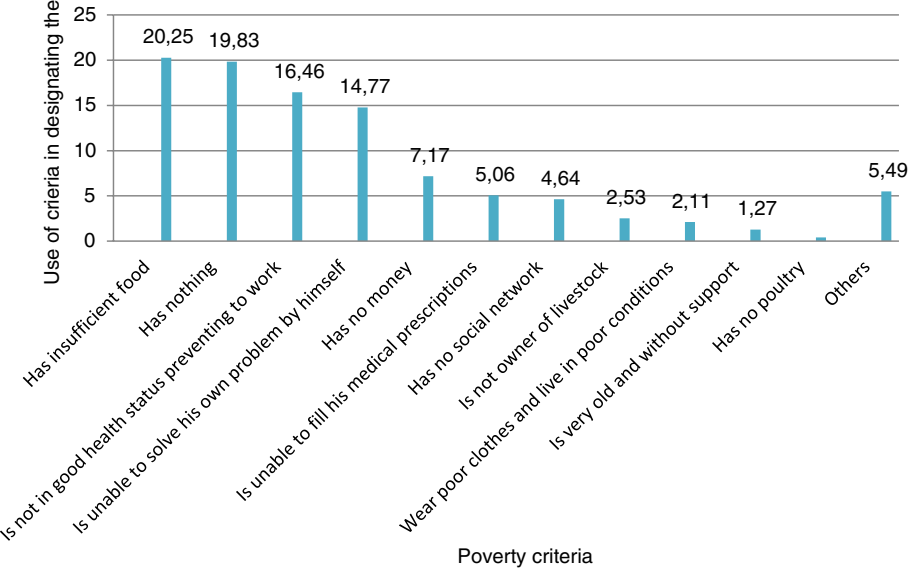
73. Sié A, Louis VR, Gbangou A, Müller O, Niamba L, Stieglbauer G, Yé M, Kouyaté B, Sauerborn R, Becher H: The Health and Demographic Surveillance System (HDSS) in Nouna, Burkina Faso, 1993–2007. *Glob Health Action* 2010, 3. doi: 10.3402/gha.v3i0.5284
74. Würthwein R, Gbangou A, Kouyaté B, Mugisha F, Yé YBH. The Nouna Health District Household Survey – Design and Implementation. Heidelberg: University of Heidelberg; 2001. p. 1–41 [SFB 544: Control of Tropical Infectious Diseases].
75. Wong LP. Focus group discussion: a tool for health and medical research. *Singapore Med J*. 2008;49:256–60. quiz 261.
76. Morgan DL. *Focus Groups as Qualitative Research*. 2nd ed. London: SAGE; 1997.
77. Mckendrick J. *Writing and Talking about Poverty*. Glasgow: Scottish Centre for Regeneration; 2011.
78. McKendrick JH, Sinclair S, Anthea Irwin H, O'Donnell GS, Dobbie L. How the Media in the UK Represents Poverty and Its Effect on Wider Public Understanding. The media. Glasgow: Joseph Rowntree Foundation; 2008.
79. Bastos A, Pereirinha J, Casaca SF, Nunes F. Women and poverty: a gender-sensitive approach. *J Socio Econ*. 2009;38:764–78.
80. Dasgupta I, Kanbur R. Community and anti-poverty targeting. *J Econ Inequal*. 2005;3:281–302.
81. Cocauthrey A. *La Pauvreté Endémique En Afrique: Quelles Solutions Durables?: Le Cas de La Vallée Du Bandama En Côte d'Ivoire*. Paris: L'Harmattan; 2009. p. 201.
82. Firfirey N, Carolissen R. "I Keep Myself Clean... At Least when You See Me, You Don't Know I Am Poor": Student Experiences of Poverty in South African Higher Education. *South African J High Educ*. 2010;24:987–1002.
83. FAO. *Wealth Index Mapping in the Horn of Africa*. Rome: FAO Publications; 2011.
84. Alain K. *Characterisation of farming systems in southern Rwanda*. Kigali: University of Kigali; 2007.
85. Makoka D, Kaplan M. *Poverty and Vulnerability - An Interdisciplinary Approach*. Paper n° 6964, Centre for Development Research. Bonn: University of Bonn; 2005. p. 30. <http://mpira.ub.uni-muenchen.de/6964/>.
86. Herrera J, Razafindrakoto M, Roubaud F. *The determinants of subjectifs poverty: a comparative analysis between Madagascar and Peru*. Paris: DIAL; 2006. p. 20.
87. Akindola RB. Towards a definition of poverty: poor people's perspectives and implications for poverty reduction. *J Dev Soc*. 2009;25:121–50.
88. Holden A, Sonne J, Novelli M. *Tourism and poverty reduction: an interpretation by the poor of Elmina, Ghana*. *Tour Plan Dev*. 2011;8:317–34.

89. Lwanga-Ntale C, McClean K. The face of chronic poverty in Uganda from the poor's perspective: constraints and opportunities. *J Hum Dev.* 2004;5:177–94.
90. Smeeding T. Poor people in rich nations: the United States in comparative perspective. *J Econ Perspect.* 2006;20:69–90.
91. Townsend P. What is poverty? An historical Perspective, pp. In: *What is poverty? Concepts Meas.* Brasilia: International Poverty Centre; 2006. p. 5–6.
92. Salmen LF: *Participatory Poverty Assessment: Incorporating Poor People's Perspectives into Poverty Assessment.* Washington DC; 1995. [Social Development Paper Series]
93. Narayan-Parker DA. *Learning from the Poor: A Participatory Assessment in Kenya.* Washington, D.C: The World Bank; 1996 [Social Development Papers].
94. Morris SS, Carletto C, Hoddinott J, Christiaensen LJ. Validity of rapid estimates of household wealth and income for health surveys in rural Africa. *J Epidemiol Community Health;* 2000;54:381–7.
95. Coudouel A, Hentschel J, Wodon Q. Poverty measurement and analysis. In: *Poverty Reduct Strateg Pap Sourceb.* 2004. p. 27–74.
96. Webber LM, Ison RL. Participatory rural appraisal design: conceptual and process issues. *Agricultural system.* 1995;47:107–31.
97. Johnston D. Participatory rural appraisal - methodology and applications - Mukherjee. *N J Peasant Stud.* 1995;23:149–51.
98. Grootaert C. Poverty and basic needs fulfilment in Africa during structural change: evidence from Cote d'Ivoire. *World Dev.* 1994;22:1521–34.
99. Weigel VB. The basic needs approach: overcoming the poverty of homo oeconomicus. *World Dev.* 1986;14:1423–34.
100. Streeten P. Basic needs: some unsettled questions. *World Dev.* 1984;12:973–8.
101. Burkina Faso: *Strategy for Accelerated Growth and Sustainable Development 2011–2015; IMF Country Report 12/123; 2011 - cr12123.pdf*  
[<http://www.imf.org/external/pubs/ft/scr/2012/cr12123.pdf>]

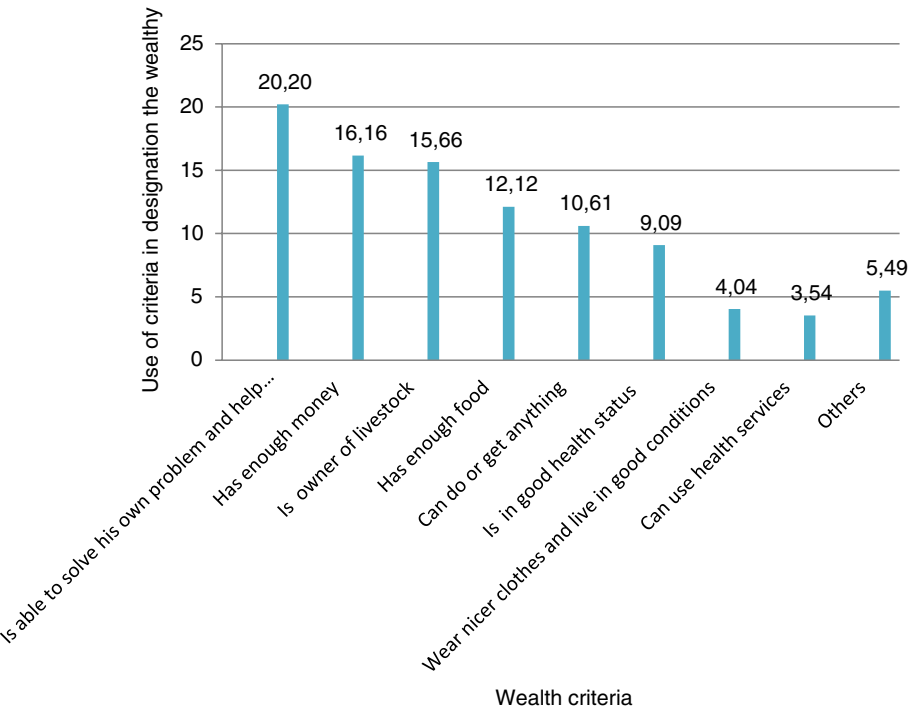




# Percentage in the use of criteria to designate the poor



# Percentage in the use of criteria to designate the wealthy



## **Additional files provided with this submission:**

**Additional file 1.** MAP of Nouna Health Demographic Surveillance Site (291k)  
<http://www.biomedcentral.com/content/supplementary/s12889-014-1335-4-s1.pdf>