

Journal of Glaciology

<http://journals.cambridge.org/JOG>

Additional services for ***Journal of Glaciology***:

Email alerts: [Click here](#)

Subscriptions: [Click here](#)

Commercial reprints: [Click here](#)

Terms of use : [Click here](#)

Air temperature distribution and energy-balance modelling of a debris-covered glacier

THOMAS E. SHAW, BEN W. BROCK, CATRIONA L. FYFFE, FRANCESCA PELLICCIOTTI, NICK RUTTER and FABRIZIO DIOTRI

Journal of Glaciology / *FirstView* Article / March 2016, pp 1 - 14

DOI: 10.1017//jog.2016.31, Published online: 11 March 2016

Link to this article: http://journals.cambridge.org/abstract_S0022143016000319

How to cite this article:

THOMAS E. SHAW, BEN W. BROCK, CATRIONA L. FYFFE, FRANCESCA PELLICCIOTTI, NICK RUTTER and FABRIZIO DIOTRI Air temperature distribution and energy-balance modelling of a debris-covered glacier. *Journal of Glaciology*, Available on CJO 2016 doi:10.1017//jog.2016.31

Request Permissions : [Click here](#)

Air temperature distribution and energy-balance modelling of a debris-covered glacier

THOMAS E. SHAW,¹ BEN W. BROCK,¹ CATRIONA L. FYFFE,²
FRANCESCA PELLICCIOTTI,^{1,3} NICK RUTTER,¹ FABRIZIO DIOTRI⁴

¹Department of Geography, Northumbria University, Newcastle, UK

²Institute of Science and the Environment, University of Worcester, Worcester, UK

³Institute of Environmental Engineering, ETH Zurich, Zurich, Switzerland

⁴Agenzia Regionale per la Protezione dell'Ambiente (ARPA) della Valle d'Aosta, Sez. Agenti Fisici, Aosta, Italy

Correspondence: T. E. Shaw <thomas.shaw@northumbria.ac.uk>

ABSTRACT. Near-surface air temperature is an important determinant of the surface energy balance of glaciers and is often represented by a constant linear temperature gradients (TGs) in models. Spatio-temporal variability in 2 m air temperature was measured across the debris-covered Miage Glacier, Italy, over an 89 d period during the 2014 ablation season using a network of 19 stations. Air temperature was found to be strongly dependent upon elevation for most stations, even under varying meteorological conditions and at different times of day, and its spatial variability was well explained by a locally derived mean linear TG (MG–TG) of $-0.0088^{\circ}\text{C m}^{-1}$. However, local temperature depressions occurred over areas of very thin or patchy debris cover. The MG–TG, together with other air TGs, extrapolated from both on- and off-glacier sites, were applied in a distributed energy-balance model. Compared with piecewise air temperature extrapolation from all on-glacier stations, modelled ablation, using the MG–TG, increased by <1%, increasing to >4% using the environmental 'lapse rate'. Ice melt under thick debris was relatively insensitive to air temperature, while the effects of different temperature extrapolation methods were strongest at high elevation sites of thin and patchy debris cover.

KEYWORDS: Debris-covered glacier, air temperature, energy balance, surface melt

1. INTRODUCTION

Glaciers in high altitude, mountainous regions are a highly important source of fresh water for major river systems (Li and Williams, 2008; Immerzeel and others, 2014); however, modelling the future availability of such resources is often hampered by insufficient data or poor understanding of localised meteorological conditions. Near-surface air temperature (T_a), typically measured at a height of 2 m, is considered the most important control on energy exchange over a snow or ice surface (Petersen and others, 2013) due to its controls on many components of the energy balance. However, the spatial distribution of this variable over glaciers is unknown and thus often estimated from a single off-glacier location using simple, uniform lapse rates.

Lapse rates (referred to here as temperature gradients (TGs)), which define a variable dependency on elevation, are the most common method of distributing T_a in model studies (Marshall and others, 2007; Petersen and Pellicciotti, 2011; Wheler and others, 2014). An environmental 'lapse rate' (ELR = $-0.0065^{\circ}\text{C m}^{-1}$) is often applied in the absence of measured values to extrapolate T_a across a glacier (Arnold and others, 2006; Machguth and others, 2006; Nolin and others, 2010). The application of a temporally constant and spatially homogenous free-air TG has, however, been questioned for glacierised basins, particularly at high altitude where the effect of terrain cannot be neglected (Marshall and others, 2007; Gardner and others, 2009; Minder and others, 2010; Petersen and others, 2013).

Marshall and others (2007) identify that both surface and atmospheric conditions affect the spatio-temporal patterns

of T_a and a constant single station TG may not account for these changes. Above a melting debris-free ice surface, the variations in TGs have been documented to become less negative (i.e. reflect smaller changes of T_a with elevation) as a result of katabatic development in the boundary layer (Greuell and Böhm, 1998; Shea and Moore, 2010; Petersen and Pellicciotti, 2011; Ayala and others, 2015). As many studies force models from off-glacier locations, the T_a variability within the katabatic boundary layer is often unaccounted for, leading to overestimation of temperatures when extrapolated on glacier (Shea and Moore, 2010). While little is known about the development of meteorological conditions over debris-covered glaciers, katabatic winds are generally absent due to the lack of a 0°C surface and the movement of air being dominated by surface convection from debris cover heating under fine conditions (Brock and others, 2010). A number of factors are considered to affect T_a over debris cover such as debris thickness (Foster and others, 2012), wind speed and topographic exposure (Fujita and Sakai, 2000; Brock and others, 2010) though data have typically been limited to a few automatic weather station (AWS) sites.

The vertical TG averaged between two AWS on Miage Glacier was found to be -0.0080 for the 2006 ablation season though with considerable temporal variations attributable to differential debris heating resulting from topographical shading and time of day (Brock and others, 2010). Similar average TGs ($-0.0075^{\circ}\text{C m}^{-1}$) were found by Mihalcea and others (2006) on Baltoro Glacier, Karakoram. The authors found that TGs over Baltoro Glacier were more negative

during the evening and at night and became less negative during the day, partially connected to the variability in wind speed.

Thicker supraglacial debris has been found to lead to higher T_a over debris-covered glaciers (Brock and others, 2010; Foster and others, 2012). Brock and others (2010) conclude that T_a variations on Miage Glacier are dominated by convective heating from the debris surface, though they only assess T_a from two AWS locations. Fujita and Sakai (2000) found more negative TGs over debris-covered compared with debris-free areas of Lirung Glacier, Nepal Himalaya. TGs were more negative over debris during the day as a result of the storage and release of heat from the debris layer. This is in contrast to the findings of Mihalcea and others (2006). However, this difference is also controlled by variations in meteorological and surface conditions, whereby cloudy and wet conditions and areas of thinner debris reduce the convective influences. Difficulty in parameterising T_a TGs over debris is therefore exacerbated by the formation of cloud in high altitude mountain environments as well as the variations in debris thickness and surface features such as crevasses and ice cliffs (Han and others, 2010; Reid and Brock, 2014).

While some studies have increased the understanding of T_a distribution across debris-free glaciers by using more observations (i.e. Petersen and Pellicciotti, 2011; Ayala and others, 2015), to our knowledge, only one study has provided such a quantity of data for debris-covered glaciers (Ragettli and others, 2015) and none have investigated the importance of debris cover to an energy-balance model. This work therefore aims to address these issues by employing a dense network of stations over an Alpine debris-covered glacier to understand the spatio-temporal variability of T_a , identify its main controls and physical drivers and evaluate its impact on modelled melt totals.

2. STUDY SITE

Miage Glacier is a large ($\sim 9.5 \text{ km}^2$) valley glacier in the Western Italian Alps, located at the southwest flank of the Mont Blanc Massif ($45^\circ 47' \text{ N}$, $06^\circ 52' \text{ E}$). Miage Glacier has steep tributaries feeding its main body; Dome Glacier, Bionnassay Glacier and Tête Carrée Glacier. It has an elevation range of $\sim 2900 \text{ m}$ with its lowest elevation at 1736 m . The glacier follows a northwest to southeast direction confined by the valley walls until it enters Val Veny, whereby it bends towards the northeast and splits into three lobes. The lower tongue (comprising a northern, southern and smaller central lobe) is flanked by lateral moraines up to 200 m high (Deline, 2005). Of the 9.5 km^2 area of the glacier, $\sim 4.5 \text{ km}^2$ is covered by continuous debris cover, with 4.6 km^2 classified as 'clean' ice or snow and the remaining transitional area (0.3 km^2) referred to as dirty ice (Fyffe and others, 2014). The continuous debris mantle comprises a mix of lithology, mainly dominated by gneiss, schist and granite.

3. DATA

3.1. Meteorological data

Near-surface T_a were measured across the glacier at 18 locations with Gemini Tinytag (TT) dataloggers (Fig. 1, Table 1) with standard PB-5001 thermistor probes or temperature

relative humidity (T-RH) probes (accuracy ± 0.20 and $\pm 0.35^\circ \text{C}$, respectively). Each probe was housed in naturally ventilated Campbell Scientific MET20/21 radiation shields and mounted on a 2 m Onset tripod (Fig. 2). All stations including an off-glacier (OG) site covered an elevation range of $\sim 750 \text{ m}$ (Fig. 3).

Distributed T_a data were supported by two full energy-balance AWS on the upper (UWS) and lower (LWS) glacier with similar instruments to those used by Brock and others (2010) and Fyffe and others (2014). The common observation period of this investigation was 1 July until 27 September 2014 (89 days). Hardware failure resulted in the absence of LWS data throughout July (excluding T_a measured by a TT logger) and as such, LWS data were only provided from 1 August onwards. UWS data were available for the full observation period. TT data were sampled every 5 s and recorded in 10 min intervals. AWS data were sampled every 1 s and logged in 30 min intervals. All data were averaged into hourly values for analysis. Precipitation data were provided by the Regione Autonoma Valle d'Aosta AWS proximal to the Lex Blanche (LB) Glacier (2162 m , $\sim 4 \text{ km}$ west of LWS).

3.2. Air temperature inter-comparison

In order to ensure accurate quantification of differences in T_a measured between sites on the glacier, TT loggers were tested under near-identical conditions for 3 different inter-comparison tests. The first 2 tests (INT1 and INT2) were able to assess the differences in T_a recorded under receipt of high shortwave radiation (clear skies) and absence of wind which generally promotes the highest errors associated with the radiation shield type (± 0.50 and $\pm 0.75^\circ \text{C}$ for MET21 and MET20, respectively). Multiple TT thermistors were housed in single radiation shields and mounted to the same tripod, recording 10 min values for a 24 h period. These tests revealed maximum T_a differences to be $\sim 0.14^\circ \text{C}$, within the manufacturer error range for the loggers ($\pm 0.20^\circ \text{C}$). INT3 was conducted prior to on-glacier setup, in the proglacial area at La Visaille from 7–9 April 2014 (Fig. 1), logging at 10 minute intervals. This test was conducted for a 40 h period during mixed weather conditions and overlying continuous snow cover in a forest clearing. The results of INT3 revealed larger variations in T_a between loggers, likely the result of difficulty in gaining near-identical testing conditions for all sensors and the role of localised shading from trees. Differences were largest for a rapid transition from cloudy to clear sky conditions, which demonstrated the differences $> 1^\circ \text{C}$ for the less accurate T-RH loggers, though were considerably less when averaged into hourly values consistent with the on-glacier measurements in this study (maximum differences $\sim 0.40^\circ \text{C}$). However, excluding this short period of time, differences remained close to the manufacturer error, and thus the values given by these loggers can be considered reflective of the T_a variations across Miage Glacier. The logger type and radiation shield for each station is provided in Table 1.

3.3. Ablation data

At each temperature station a low conductivity 2 m PVC stake was used as a measure of ablation for the common observation period. The stakes were typically located within $\sim 10 \text{ m}$ of the temperature station in an area that was relatively flat but also as representative as possible of the

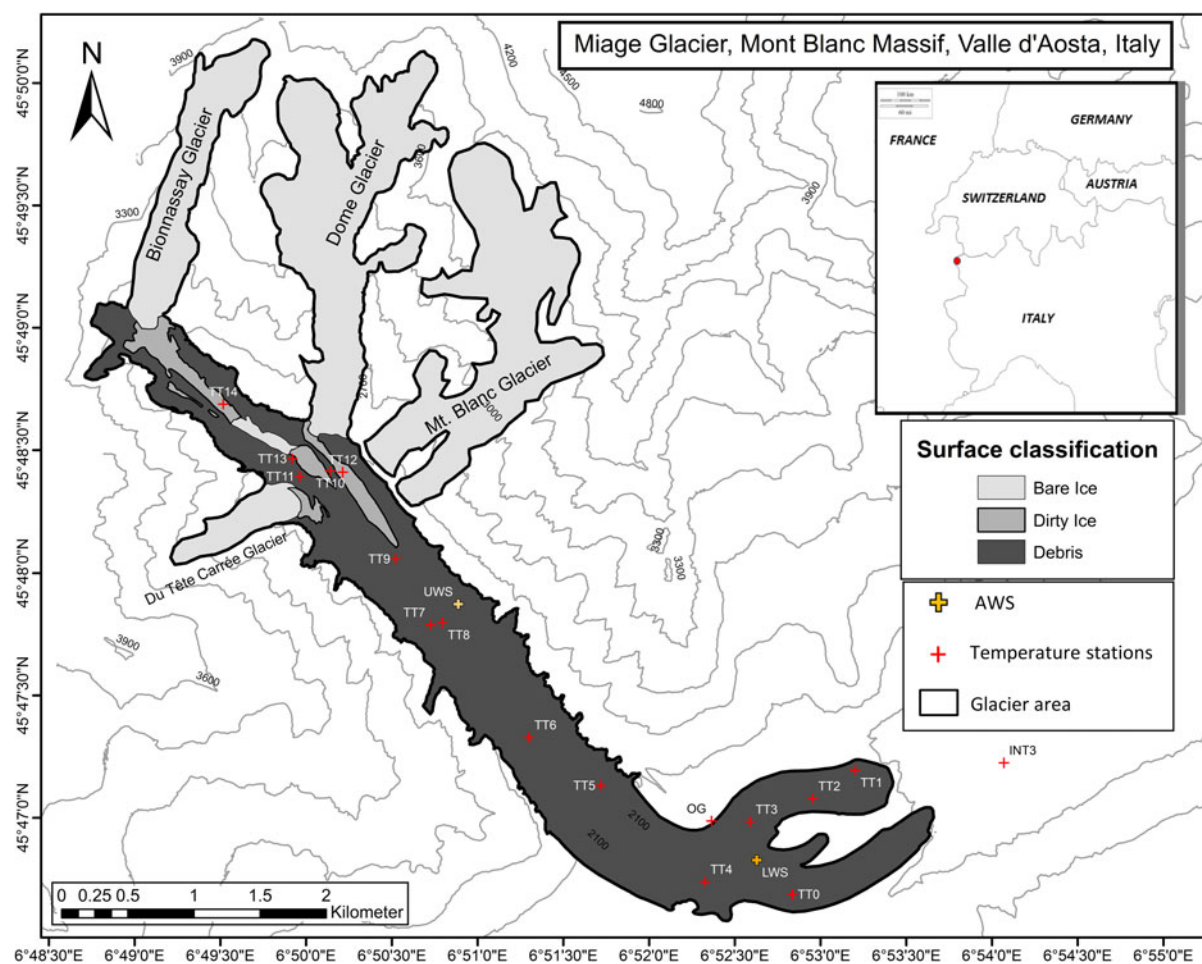


Fig. 1. Map of the Miage Glacier with the positions of TT(*n*) stations, INT3 setup and surface classification. Inset shows position within Western Europe. Contours are shown in 300 m intervals.

debris surface characteristics beneath the station. The debris was removed to allow holes to be drilled into the ice using a strengthened Kovacs ice drill, the initial depth of the stake

was measured from the top to the surface of the ice and the debris was replaced as naturally as possible. Water equivalent ablation for the 14 stakes was calculated assuming an

Table 1. Miage Glacier TT/AWS station setup and descriptive statistics

Name	Dual/T–RH	Radiation shield	Elevation	Debris Thickness	Mean T_a	Standard deviation T_a	Absolute min T_a	Absolute max T_a
			m	cm	°C	°C	°C	°C
OG	T-RH	MET20	1997	N/A	9.7	3.4	0.6	21.7
TT0	Dual	MET20	1974	—	10.2	3.5	2.5	22.4
TT1	T-RH	MET20	1844	70	11.3	3.7	2.4	24.1
TT2	Dual	MET21	1900	28.5	10.6	4.2	1.8	23.6
TT3	T-RH	MET20	1986	26	9.8	3.5	0.9	22.1
TT4	Dual	MET21	2038	15	9.5	3.3	0.8	21.1
TT5	T-RH	MET20	2115	10	8.8	3.4	0.3	20.9
TT6	Dual	MET21	2210	12	8.6	3.5	−0.1	19.8
TT7	Dual	MET21	2269	3	6.5	3.2	−1.1	16.9
TT8	Dual	MET21	2308	9 (37)	7.5	3.2	−0.6	19.5
TT9	Dual	MET21	2346	5 (12)	7.0	3.1	−0.9	16.3
TT10	T-RH	MET20	2413	23	6.3	2.9	−1.4	15.6
TT11	Dual	MET20	2413	17	6.1	2.7	−1.4	14.4
TT12	T-RH	MET20	2400	<0.5	5.6	3.1	−1.6	14.7
TT13	Dual	MET21	2446	7	6.2	2.9	−0.9	17.3
TT14	Dual	MET20	2585	2	4.7	2.6	−3.0	12.2
LWS	Dual	MET20	2015	27	9.8	3.4	0.8	21.8
UWS	Dual	41303-5A	2292	14	7.6	3.4	−0.7	18.8
INT3	ALL	ALL	1606	—	—	—	—	—

Elevation recorded by Trimble Juno handheld GPS. T–RH, air temperature and RH sensor; Dual, air and surface temperature sensors. UWS T–RH is provided by a Vaisala HMP-45A sensor.



Fig. 2. (a) TT13 as an example of the temperature station in the field (image taken 14:20, 30th June, 2014) and (b) OG station and ground conditions.

ice density of 890 kg m^{-3} (Brock and others, 2010; Fyffe and others, 2014). For TT14, initial stake drilling was into thick snow cover. Snow ablation was converted to water equivalent using the snow density gained from measurements at TT2 in April 2014, averaging 510 kg m^{-3} from a 60-cm deep snow pit. Dates of ablation measurements are shown in Table 2.

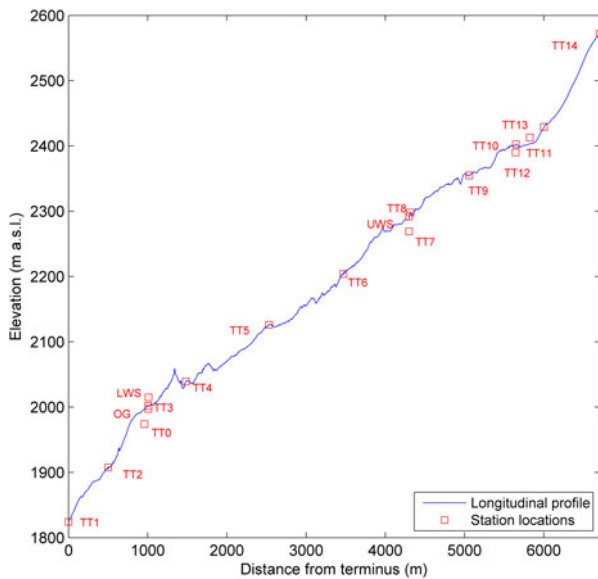


Fig. 3. Longitudinal profile of the Miage Glacier given as the distance from the north lobe terminus (m) and the relative locations of AWS and TT stations. The peak at $\sim 1400 \text{ m}$ is the result of large debris deposits on the glacier bend. Elevation data are derived from a 2010 Lidar survey. Note: vertical scale is exaggerated.

4. METHODS

4.1. TG analyses

To establish the effect of differing meteorological conditions on near-surface T_a gradients, the data were stratified according to temperature, cloud conditions, wind speed and direction and day/night conditions (Table 3). Cloud cover fraction was based on the ratio of potential clear sky (E_{cs}) to estimated (E_a) atmospheric emissivity following Petersen and others (2013) and Juszak and Pellicciotti (2013). The ratio, based upon the initial formula of Brutsaert (1975), developed by Marty and Philipona (2000) is calculated for E_a

$$E_a = \frac{lw \downarrow}{\sigma T^4}, \quad (1)$$

where T is T_a in Kelvin, $lw \downarrow$ is incoming longwave radiation (watt per square metre (W m^{-2})) and σ is the Stefan Boltzmann constant. E_{cs} is given by

$$E_{cs} = k_{AD} + kl \left(\frac{e_a}{T} \right)^{1/8}, \quad (2)$$

where kl is a location-dependent coefficient given by manually selecting clear-sky hours from the dataset, e_a is water vapour pressure (Pa) and k_{AD} is an altitude-dependent coefficient for clear-sky emittance for a completely dry atmosphere following Marty and Philipona (2000). Cloud cover varies between 0 (where $E_a = E_{cs}$) and 1 ($E_a = 1$). The hourly values were then classified according to Petersen and others (2013) where C0 represents clear sky ($0 \leq n < 0.1$), C1 represents low fractions of cloud ($0.1 \leq n < 0.4$), C2 represents high fractions of cloud ($0.4 \leq n < 0.8$) and C3 which is considered completely overcast ($n \geq 0.8$). This classification was limited to the measurement of incoming longwave radiation at UWS, and as such does not account for the heterogeneous development of cloud across the glacier. However, the availability of incoming longwave radiation from CNR4 data at LWS and visual assessment of cloud from time-lapse cameras at both AWS generally support the classifications given by the above methodology.

4.2. Application of T_a TGs in a distributed melt model

T_a was distributed using gradients of air temperature, TG ($^{\circ}\text{C m}^{-1}$) given by regression against elevation or between station pairs as

$$\text{TG} = \frac{T_{a2} - T_{a1}}{Z2 - Z1} = \frac{\delta T_a}{\delta Z}, \quad (3)$$

where $T_a(n)$ defines the TT(n) air temperature record and $Z(n)$ is the respective elevation of the stations. This investigation follows the convention whereby positive TGs indicate an increase in temperature with elevation. The 'all-data' T_a distribution for this investigation utilises all on-glacier records of air temperature (except TT0) with a piecewise TG in elevation increments from 1844 to 2585 m a.s.l following Petersen and Pellicciotti (2011). This all-data dataset (hereafter referred to as AD_d) applies the TG between station pairs along the glacier (see Fig. 1) which varies with every time step. A TG between LWS and UWS data (AWS_d) and the upper and lower most TT stations over debris (TT1–TT13_d) were also employed for comparison. To account for

Table 2. Ablation stake measurement periods given for each stake at the corresponding TT station in dd.mm

Stake	Measurement period			
	July	July–August	August	August–September
TT1	01.07–07.07	07.07–11.08	11.08–16.08	16.08–29.09
TT2	01.07–07.07	07.07–11.08	11.08–16.08	—
TT3	01.07–07.07	07.07–11.08	11.08–16.08	—
TT4	02.07–07.07	07.07–11.08	11.08–16.08	16.08–29.09
TT5	02.07–08.07	08.07–09.08	09.08–15.08	—
TT6	02.07–08.07	08.07–09.08	09.08–15.08	—
TT7	03.07–08.07	08.07–09.08	09.08–15.08	—
TT8	03.07–08.07	08.07–09.08	09.08–15.08	15.08–28.09
TT9	03.07–08.07	08.07–09.08	09.08–15.08	15.08–28.09
TT10	03.07–08.07	08.07–09.08	09.08–15.08	15.08–28.09
TT11	03.07–12.07	12.07–09.08	09.08–15.08	15.08–28.09
TT12	03.07–08.07	—	09.08–15.08	15.08–28.09
TT13	03.07–12.07	12.07–09.08	09.08–15.08	—
TT14	03.07–12.07	—	09.08–15.08	—

Missing values indicate where full melt out of the stakes had occurred.

the differences from melt model simulations (following section), distributed T_a fields were further derived from:

- (1) Temporally constant piecewise TGs, where all stations were employed (CNL_d). This extrapolation method accounts for the spatial variability in T_a for the full elevation range but keeps a constant TG between station pairs where the mean value of the whole season are used.
- (2) Constant glacier-wide TGs where T_a was extrapolated from single locations, LWS (a representative debris thickness of an on-glacier site) and off-glacier sites OG and nearby LB AWS. Constant linear TGs are those which either represents the average values calculated for Miage Glacier, the published value for debris-covered Baltoro Glacier (Mihalcea and others, 2006) or the commonly adopted ELR.
- (3) The AD_d dataset but with the inclusion of a temperature depression at sites within topographic troughs between the central/medial moraines (hereafter TR_d). Trough

areas were identified with three-dimensional visual interpretation from a 2010 LiDAR DEM and manually digitised in ArcGIS. T_a was reduced within these areas using the TT7–TT8 regression equation.

- (4) Constant TGs from individual stations as with (2) but where the strength of the constant value across the glacier was determined by the time of day (hourly average TG) or cloud factor (C0–C3). These extrapolation methods are hereafter referred to as $z-c_d$, where z is the site of extrapolation and c is the condition classification (i.e. LWS-C_d for T_a forced from LWS by a cloud fraction TG).

All distribution methods are summarised in Table 4.

4.3. Model approach

This investigation applies a modified version of the distributed debris-energy-balance (DEB) model developed by Fyfe and others (2014). The full details are therefore not repeated

Table 3. Description and value range for conditional classifications

Classification	Description	Range	Justification
D0	Night time hours	21:00–07:00 (inclusive of)	(Based upon average daylight hours and sharp changes in average T_a bell curves)
D1	Day time hours	08:00–20:00 (inclusive of)	
$W < 1$	Low wind speeds	$\leq 1 \text{ m s}^{-1}$	Lower extreme subset
$5 > W > 1$	Mid-range wind speeds	$1-5 \text{ m s}^{-1}$	The remaining intermediate data
$W > 5$	High wind speeds	$> 5 \text{ m s}^{-1}$	Upper extreme subset
C0	Clear sky hours	$0 \leq n < 0.1$	Following that of Petersen and others (2013)
C1	Partly cloudy hours	$0.1 \leq n < 0.4$	Following that of Petersen and others (2013)
C2	Mostly cloudy hours	$0.4 \leq n < 0.8$	Following that of Petersen and others (2013)
C3	Overcast	$0.8 \leq n$	Following that of Petersen and others (2013)
Up glacier	Up-glacier wind (UWS)	90–180°	Visual interpretation of wind direction
Down glacier	Down-glacier wind (UWS)	290–20°	Visual interpretation of wind direction
T0	Time-slice	01:00–06:00	—
T1	Time-slice	07:00–12:00	—
T2	Time-slice	13:00–18:00	—
T3	Time-slice	19:00–00:00	—
T_a high	High-temperature hours	$T_a > = 10.7^\circ\text{C}$	Upper 20th percentile of data
T_a mid	Mid-range temperature hours	$5.3^\circ\text{C} < T_a < 10.7^\circ\text{C}$	The remaining data
T_a low	Low-temperature hours	$T_a < = 5.3^\circ\text{C}$	Lower 20th percentile of data

Table 4. Air temperature distribution methods for Miage glacier, 2014, with description of data (number of observations in parentheses) and the total range of lapse rate values for each method

Name	Data (<i>n</i>)	Lapse rate range °C m ⁻¹
OP _d	All on-glacier TT and AWS data (31 670)*	-0.6257 to +0.1488
TT1–TT13 _d	TT1–TT13 lapse rate (4270)*	-0.0185 to +0.0034
AWS _d	All AWS data (4270)*	-0.0239 to +0.0129
CNL _d	Interval means of on-glacier data (31 670)*	-0.0447 to +0.0255
LWS-MG _d	From LWS only with Miage average LR (2135)	-0.0088
LWS-BT _d	From LWS only with Baltoro average LR (2135)	-0.0075
LWS-ELR _d	From LWS only with ELR (2135)	-0.0065
OG-MG _d	From OG only with Miage average LR (2135)	-0.0088
OG-BT _d	From OG only with Baltoro average LR (2135)	-0.0075
OG-ELR _d	From OG only with ELR (2135)	-0.0065
LB-MG _d	From LB only with Miage average LR (2135)	-0.0088
LB-BT _d	From LB only with Baltoro average LR (2135)	-0.0075
LB-ELR _d	From LB only with Miage average LR (2135)	-0.0065
TR _d	OP _d with topographic <i>T_a</i> depressions (31 670)*	-0.6257 to +0.1488
LWS-C _d	From LWS, variable with cloud (2135)	-0.0076 to -0.0106
OG-C _d	From OG, variable with cloud (2135)	-0.0076 to -0.0106
LB-C _d	From LB, variable with cloud (2135)	-0.0076 to -0.0106
LWS-H _d	From LWS, variable by hour (2135)	-0.0067 to -0.0111
OG-H _d	From OG, variable by hour (2135)	-0.0067 to -0.0111
LB-H _d	From LB, variable by hour (2135)	-0.0067 to -0.0111

*Identifies distribution methods that apply piece-wise lapse rates or where the lapse rate varies with each time step and thus the absolute max/min values are much larger. Lower weather station (LWS), OG and LB sites were the forcing locations for constant linear lapse rates.

here, though the main components and key adjustments to the model are explored in this section.

The original model structure calculates sub-debris ablation rates across the glacier using the DEB model of Reid and Brock (2010). Key meteorological variables, including T_a , wind speed and net radiation were distributed across the glacier and ablation (a) was calculated according to the surface cover type (debris, clean or dirty ice and snow) over a 30 m × 30 m cell area with an hourly time step

$$a = \frac{\Delta t}{\rho_w L_f} [S_{\text{net}} + L_{\text{net}} + H + LE + P + C_i], \quad (4)$$

where S_{net} and L_{net} are the respective net fluxes of shortwave and longwave radiation, H and LE are the turbulent fluxes of sensible and latent heat, and P is the heat flux provided by rain. These sources of energy were multiplied by the latent heat of fusion (L_f) and the density of water (ρ_w) for a given timestep (Δt). The conductive heat flux to the base of the debris (C_i) was only calculated for debris surfaces and was calculated by DEB model based upon the temperature gradient through the debris layer (Reid and Brock, 2010).

A grid of the glacier outline was digitised from 2009 DigitalGlobe satellite imagery in ArcGIS software including the Bionnassay, Tête Carrée and Dome glaciers as part of Miage Glacier. For calculation of melt, the Mont Blanc Glacier was excluded from the glacier outline as its tributary no longer forms part of Miage Glacier. Areas of dirty ice and patchy debris are based upon an assessment of satellite imagery and field observations within the transition zone at the tributary area, though in general, surface cover classifications differ only slightly from that proposed by Fyffe and others (2014). Areas of crevassing and large ice cliffs over the glacier were identified following Reid and Brock (2014), whereby slope angles were generated and digitised from a 2 m resolution 2010 LiDAR DEM and used as areas

of increased surface roughness (from a value of 0.007–0.05 m, following Fyffe and others, 2014), where the feature size was large enough to be accounted for in the cell resolution. Areas with multiple smaller crevasses were clustered under one digitised polygon for this reason.

The primary DEM for this model was derived from an airborne LiDAR survey in 2008, provided by the Regione Autonoma Valle d'Aosta. It has a higher spatial resolution of 10 m, which was resampled to a 30 m cell size and projected onto the WGS84 UTM 32N coordinate system. From this DEM a shading routine was incorporated to account for the calculation of diffuse radiation before the influence of cloud cover following the equation of Brock and Arnold (2000). Binary grids were created utilising the hill shade algorithm in ArcGIS. Due to the small variations in shading between individual days, every day within a week was shaded with the hourly shading variations for the first day of that week. This was designed for computational efficiency of grid production and model input. For unshaded cells, proportions of direct and diffuse radiation were calculated using the slope and aspect of each cell and from solar zenith and azimuth angles for different hours of the day using a Sun position algorithm (Reda and Andreas, 2008).

Snow cover data were supplied at a 500 m resolution from MODISA1 for days where cloud cover was generally absent over the glacier area. Daily snow cover grids were produced by interpolating the snow cover data between cloud-free days. The Tête Carrée tributary and upper regions of the Dome and Bionnassay glaciers were assumed to be permanently snow covered based on satellite observations. Occurrence of snow-fall events during the ablation season typically extended to elevations no lower than TT9 (2346 m) and were generally limited to the tributary area up glacier. Following Fyffe and others (2014), the model determines the values of emissivity, roughness and albedo based upon surface cover classification,

whereby a snowmelt model is applied for 100% coverage of snow. For fractional snow cover, both the snowmelt model and the model of the surface type beneath are run with melt apportioned accordingly.

The distributed energy-balance model was run 19 times, with varying methods of T_a estimation described in the previous section. Wind speed was assigned as a constant value from LWS and UWS for the respective lower and upper areas of the glacier, divided by the elevation of TT5 (2115 m), which was considered realistic given the topographically unconfined nature of the glacier at elevations lower than this site. For missing LWS data at the start of the season, all energy-balance equations were forced with data from the UWS. Due to topographical shading of UWS during hours of the morning (0700–0900) and evening (1800–20000), this gave a generally unrealistic value of shortwave radiation which was therefore calculated from the theoretical maximum transmittance through the atmosphere after attenuation due to Rayleigh scatter, aerosols and ozone following Pellicciotti and others (2011) for July. Due to highly similar values at sites TT1, TT3 and OG and small data gaps for TT12, RH was extrapolated only from four, more spatially representative stations, TT1, TT5, UWS and TT10 and held constant above TT10. Surface RH was calculated from the Magnus–Tetens approximation using a dew-point temperature and radiative surface temperature from both AWS sites.

Debris thickness was estimated as a residual of the surface energy balance using surface temperatures derived from ASTER thermal imagery (Foster and others, 2012). Given the greater thickness of the upper-glacier (above TT13) debris at the valley sides compared with that at TT9, the debris thickness in this model at elevations >2370 m (the highest measurement in Foster and others, 2012) was given by simple nearest neighbour extrapolation in ArcGIS giving thickness values ranging from 2 to 6 cm.

5. RESULTS

5.1. Air temperature variations and meteorological controls

The 2014 Miage glacier ablation season was characterised by wet conditions and an average T_a of 8.1°C across all station observations, with extremes of -3.0 and 24.1°C (Table 1). The distribution of T_a was strongly related to elevation on the glacier with highly significant ($p = 0.01$) linear correlations for mean, maximum and minimum values as well as for the averages of the 10th and 90th percentiles (Fig. 4). The main exceptions to this are the low outliers at TT7 (thin debris) and TT12 (dirty ice) which reflect localised cooling associated with thin/patchy debris cover. The average localised TG (hereafter referred to as MG-TG) for Miage Glacier was found to be $-0.0088^\circ\text{C m}^{-1}$, similar to Koxkar debris-covered glacier, China ($-0.0080^\circ\text{C m}^{-1}$; Han and others, 2008; Juen and others, 2014) although for a shorter ablation period (May–September in Han and others, 2008).

Interestingly, the relation between T_a and elevation is strong for all types of meteorological conditions (Fig. 5). TGs derived from the slope coefficients for all stations are more negative under clear skies compared with those under cloudy conditions, a difference between C0 and C3 of $0.0027^\circ\text{C m}^{-1}$. Variations in wind speed and up/down-

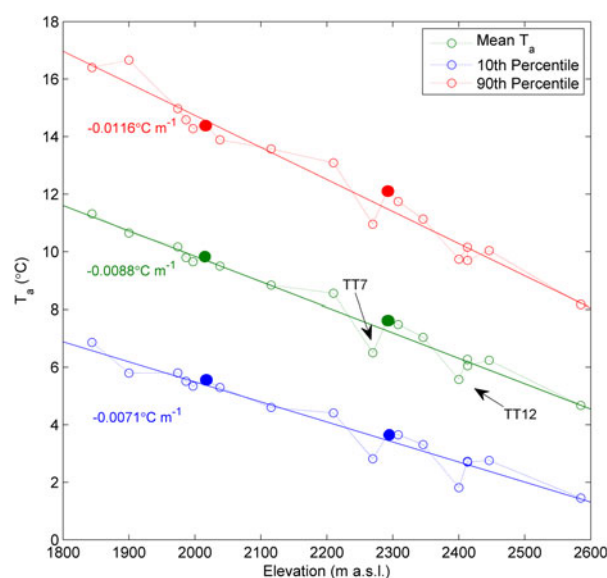


Fig. 4. Mean (green), and upper (red) and lower (blue) 10th percentiles of T_a for all TT stations and AWS (filled circles) against elevation on the Miage Glacier for the common observation period. TT7 and TT12 marked as anomalous means against elevation. Lines of best fit and slope coefficients are given for each data group.

glacier flow at UWS had little impact on the strength of relationship with elevation, where a lower R^2 value for high wind speeds (0.89) was likely attributable to a small number of observations (120). Generally, low wind speeds tend to coincide with lower average T_a and less negative ($-0.0079^\circ\text{C m}^{-1}$) TGs across the glacier. The scale of the TG increases with overall air temperature, but remains strongly related to elevation. The TT7 and TT12 anomalies are easily distinguishable for all conditions, particularly for C1 classifications (green circles in Fig. 5).

Figure 6 shows the comparison of hourly TGs in this study with the daily pattern between both AWS sites during the same period in 2006 from Brock and others (2010). TGs for 2014 were lowest overnight at $\sim -0.0070^\circ\text{C m}^{-1}$, but increase sharply to $-0.0100^\circ\text{C m}^{-1}$ or more during daylight hours in response to insolation-driven heating of the debris, which leads to warmer T_a . This warming effect was greatest on the lower glacier due to both thicker debris cover and less topographic shading compared with the upper glacier. The high number of station observations presented in this study reduces the strong increase in the late morning gradient from localised shading shown by the 2006 data.

5.2. Air temperature estimation with TGs

Measured T_a values were found to be estimated well by the linear TG between the lower (TT1) and uppermost (TT13) stations over debris (Fig. 7). The TT1–TT13 TG was found to overestimate at TT7 and TT12 sites, particularly during the night, and also to overestimate by up to 1°C during the daytime at TT11. The estimation of T_a using the ELR is applicable to the lower glacier area at close proximity to LWS but at elevations greater than TT4/TT5, daytime values were significantly overestimated.

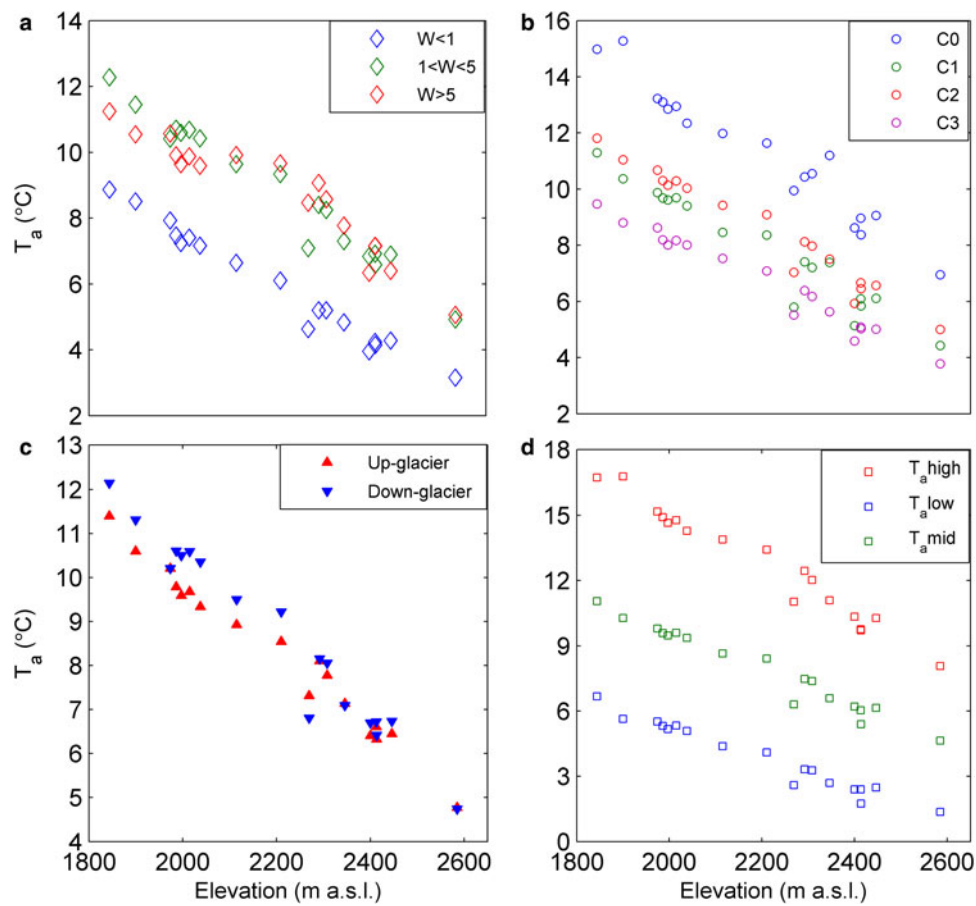


Fig. 5. Average T_a ($^{\circ}\text{C}$) against elevation (m a.s.l.) for different meteorological conditions described in Table 3. (a) Wind speed (m/s^{-1}). (b) Cloud cover where C0 = clear sky, C1 = partly cloudy, C2 = mostly cloudy and C3 = overcast. (c) Wind direction. (d) T_a percentiles (lower and upper 20th) for average of all stations. Meteorological variables (excluding T_a) are measured only at UWS. Y-axes vary.

Contrary to the typical overestimation of T_a from off-glacier extrapolation for debris-free glaciers (e.g. Shea and Moore, 2010), Miage Glacier demonstrates a general absence of the typical boundary layer cooling effect under positive ambient air temperatures, due to the warming effect of debris (Takeuchi and others, 2001). The on-glacier T_a at LWS matches and even exceeds the off-glacier measurements at OG and LB. For the season average, T_a at LWS was $\sim 0.2^{\circ}\text{C}$ warmer than OG (within the error range of the TT sensors); though up to 1°C warmer under cloudy conditions. Figure 8 demonstrates the extrapolation of the MG-TG ($-0.0088^{\circ}\text{C m}^{-1}$) from LWS, OG and LB for selected stations and while some variation in the estimated T_a exists for the mid-morning, the choice of on-glacier/off-glacier forcing location results in little overall difference.

5.3. Ablation measurements

Ablation for the 1 July–9 August period was generally greater than 9th August–27 September for most TT sites, with the exception of three of the up-glacier sites (Fig. 9a). This was partly due to absence of data for some stakes during the final part of the field season (green bars) and potential errors derived from short measurement periods (7 d) for all stakes at the beginning of August–September (Müller and Keeler, 1969; Munro, 1989; Pellicciotti and others, 2005). The beginning of this period was nevertheless characterised by a high number of intense rainfall events (daily total on

26th August of 41 mm, recorded at LB, equivalent to $>16\%$ of the season total) with greater than average wind speeds and slightly positive net longwave radiation. By comparison, the July–August period experienced the greatest

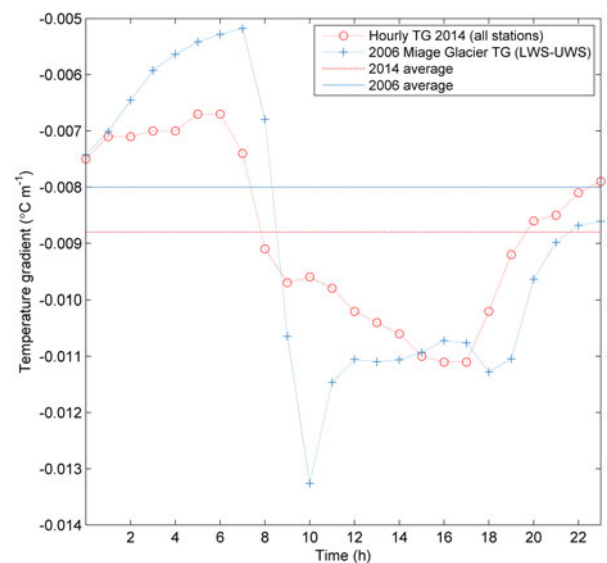


Fig. 6. Hourly average 2014 (all data) and 2006 (LWS–UWS) Miage Glacier TGs ($\text{TG} = ^{\circ}\text{C m}^{-1}$). 2006 data derived from Brock and others (2010). Horizontal lines show the averages for both years.

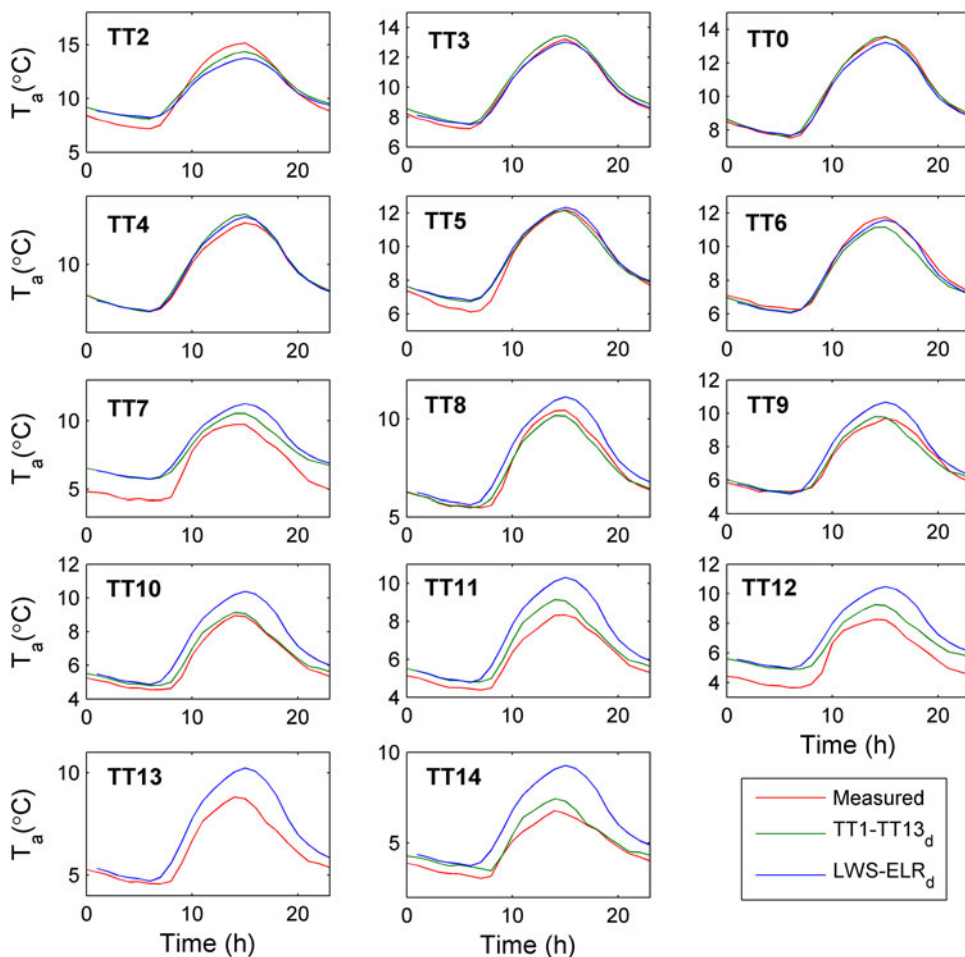


Fig. 7. Average hourly T_a by station measured (red line) and estimated using a TG derived from the highest and lowest on-glacier stations over debris (green line) and from the LWS-ELR (blue line). Y-axis scale ranges vary.

frequency of clear sky conditions, the warmest average T_a (8.5°C compared with 7.6°C for the latter period) and the most negative TGs. Thin debris sites at TT7 and TT9 and

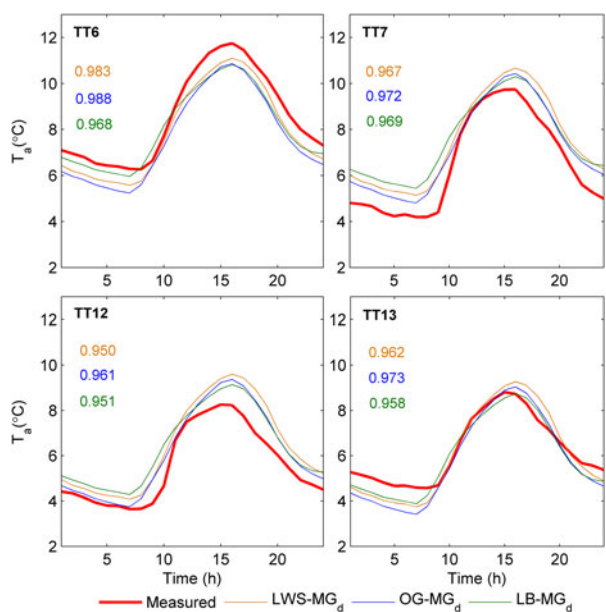


Fig. 8. On/OG forcing for T_a at selected sites compared with measured average hourly values (red). R^2 values given for each forcing as a fit to the measured values.

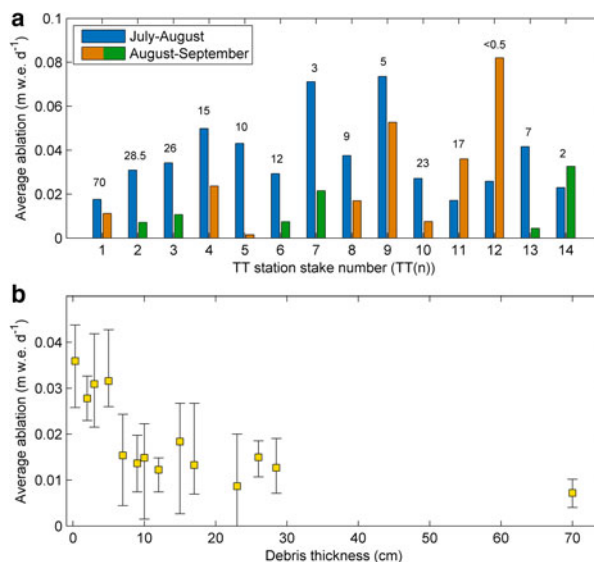


Fig. 9. (a) Ablation stake melt rates (m w.e. d⁻¹) for combined periods and (b) the relationship with debris thickness (cm) at each site. Square boxes indicate the mean of each stake site and the total range for common observation period shown by the vertical error bars. Green bars in (a) indicate where stake melt out had occurred for the August-September period and therefore values are given only for a short (1 week) period in August. The July-August (August-September) period combines the former (latter) two subperiods of Table 2.

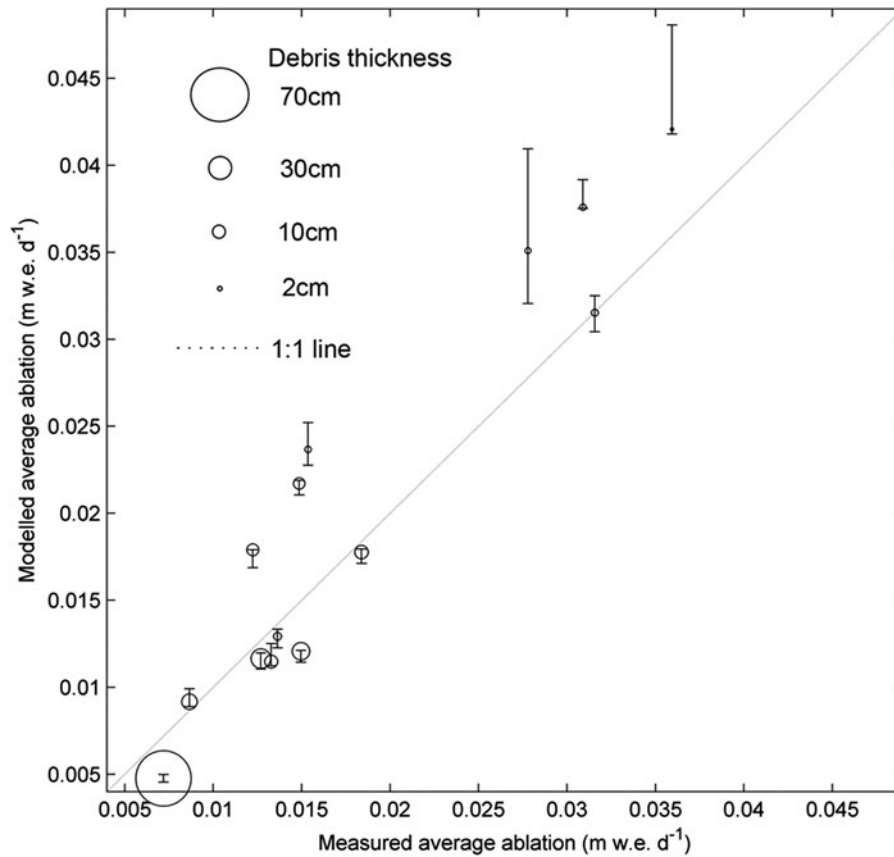


Fig. 10. Measured vs modelled daily average ablation (m w.e. d^{-1}) by stake where the circle size indicates the thickness of the debris cover and the error bars represent the total range of modelled ablation according to the various TG inputs as shown in Table 4. Error bars for measured ablation are not shown for visualisation purposes, though we consider a reasonable error margin of 0.05 m for the season total ($\sim 0.0005 \text{ m w.e. d}^{-1}$).

dirty ice site TT12 demonstrate the most rapid ablation. The relationship of mean ablation to debris thickness generally follows the established pattern of the declining limb of the \Ostrem curve (\Ostrem , 1959), although the increased ablation for very thin debris ('effective thickness') is not apparent for the stake measurements (Fig. 9b).

6. MODEL RESULTS

6.1. Model fit to ablation data

Figure 10 demonstrates the relationship between mean daily modelled and measured ablation (m w.e. d^{-1}) for all stake locations for their respective measurement time periods. Results show a generally good fit of the model, with a RMSE of $0.0047 \text{ m w.e. d}^{-1}$ for the AD_d run without any model tuning (original parameters from Fyffe and others (2014)). Considering the daily averages, the model tends to underestimate ablation rates for thicker debris cover (larger circles) and overestimate for thinner debris and dirty ice.

In common with Fyffe and others (2014), variations in T_a appear to have only a small effect upon modelled melt variability under thick debris cover. The variability in daily average ablation from different TGs (error bars) tends to increase with the magnitude of melt rate, in that thinner debris and higher elevation areas that melt faster are also more sensitive to T_a (i.e. TT12 and TT9). Overestimates in melt typically occur more for higher elevation sites, where

the effect of both thin debris and T_a extrapolation from constant TGs become more pronounced. Forcing the energy-balance model with the LWS data and the standard TG (ELR) results in the greatest modelled melt errors (RMSE of $0.0058 \text{ m w.e. d}^{-1}$).

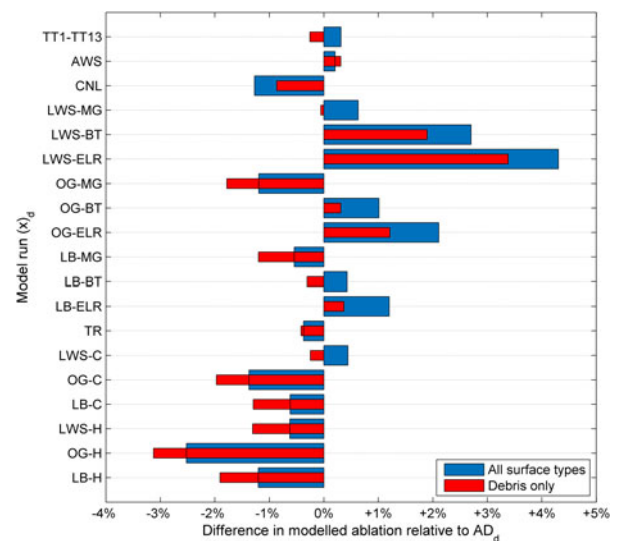


Fig. 11. Difference in glacier-wide ablation relative to AD_d for all model runs (as shown in Table 4) expressed as a percentage. Blue (red) bars represent all surface types (debris only) below 2600 m.

6.2. Glacier-wide model output

In order to compare different T_a model runs with AD_d where data are available and not assumed, glacier-wide analysis of T_a variations to model output are considered only at elevations <2600 m a.s.l. (\sim TT14). Results show that the glacier is generally insensitive to low magnitude temperature variations over debris cover (Fig. 11). The largest increase in modelled ablation relative to AD_d is +4.3% for LWS-ELR_d. Of greatest significance is that the application of the MG-TG extrapolated from LWS (LWS-MG_d), results in an increase of $<1\%$ from the AD_d run with similar performance as with TGs accounting for cloud cover effects (LWS-C_d). Overestimates of ablation are mostly attributable to debris-free model cells.

Differences in calculated melt rates were dominated by the role of sensible heat fluxes and net longwave radiation. The total change in distributed values of these fluxes however was small when compared with AD_d and were again only noteworthy for areas of thinner debris where temperature differences were larger between model runs (i.e. TT7). For example, maximum differences in sensible heat flux across the glacier between AD_d and LWS-MG_d were ~ 10 W m⁻² for debris thicknesses of 2 cm. Further description of modelled differences is thus detailed only with regards to the calculated melt rate as a percentage relative to AD_d .

The importance of applying a locally derived constant TG is apparent. Decreasing the TG from -0.0088 (Miage Glacier) to $-0.0075^\circ\text{C m}^{-1}$ (Baltoro Glacier – Mihalcea and others, 2006) increases total ablation for all surfaces by 2.1% when forced from LWS. Making the TG less negative from -0.0088 to $-0.0065^\circ\text{C m}^{-1}$ (ELR) results in a total increase of 3.7%. Extrapolating T_a from OG sites results in a satisfactory model performance relative to AD_d . Surprisingly, forcing air temperature from the OG site results in a decrease in modelled ablation of 1.8% (LWS/OG-MG_d – Fig. 11) despite only a small disparity in average T_a ($\sim 0.2^\circ\text{C}$). This is likely explained by the greater difference in on- and off-glacier temperatures during the daytime (Fig. 8), when melt rates were highest.

A piecewise application of constant temporal TGs (CNL_d) was found to have little impact on the modelled ablation. Differences relative to AD_d were found to be approximately -1% , and mostly the result of inversions in T_a at TT7. Due to the strong dependency of T_a on elevation for all hours of the day, temporally variable TGs were shown to be less relevant for modelling than in previous studies of debris-free glaciers (Petersen and Pellicciotti, 2011). Even the application of an hourly average TG for the season (Fig. 11) performed slightly worse than the assumption of the MG-TG forced from an on-glacier location (LWS-MG_d), and all result in a decrease in modelled ablation relative to AD_d , discussed in the following section. Forcing the model only with data from the two AWS (AWS_d) or two TT stations (TT1–TT13_d) resulted in little overall difference to the model.

Reduction of T_a in topographic hollows for the TR_d model run accounted for a total decrease in ablation of 0.37%. Thus, despite variations associated with locally thin debris being unaccounted for in the application of a constant TG, the overall impact on total melt from the glacier is small.

7. DISCUSSION

Data demonstrating that a locally derived, temporally constant and spatially homogenous TG (MG-TG) adequately

accounts for the variations in T_a across Miage Glacier contrasts with results for many debris-free glaciers (Gardner and others, 2009; Petersen and Pellicciotti, 2011; Petersen and others, 2013; Ayala and others, 2015). The MG-TG is similar to that found for the debris-covered Koxkar Glacier (Han and others, 2008) and in a previous year for Miage Glacier (Brock and others, 2010). The presence of a supraglacial debris layer that convectively heats the lower atmosphere through a flux of sensible heat and longwave radiation is a strong control on T_a and is generally related to the thickness of the debris mantle (Brock and others, 2010; Foster and others, 2012). Miage Glacier has an inverse relation between elevation and debris thickness, particularly for the differences between the upper glacier (which is also topographically shaded during mid-morning and late evening) and thicknesses exceeding 1 m on the tongue. It is likely that the control of debris heating and its variance with elevation acts to reinforce the strong linear TG (MG-TG) found from regression with all on-glacier stations. Furthermore, this elevation dependency was found to be very strong and statistically significant when tested under different meteorological conditions (i.e. wind speed/cloud cover – Table 3). The TG was more negative for clear sky conditions when debris heating was maximised on the lower glacier compared with thinner debris at higher elevations. However, even under overcast (C3) conditions, when solar heating of the debris is suppressed, TGs still exceed that of the ELR and are comparable with those found for debris-covered Baltoro Glacier in the Karakoram (Mihalcea and others, 2006).

An interesting and somewhat counterintuitive finding for this work is the superior model performance of the MG-TG to a TG that varies as an hourly average (i.e. Fig. 6). It was found that although the hourly average TGs represent the average for the season, for days when overcast conditions dominated, application of a more negative daytime TG led to significant under-estimations in T_a at higher elevations which were better modelled by the MG-TG. This result is in contrast to the findings for a debris-free glacier, where temporally variable TGs were considered important for accurately quantifying ablation (Petersen and Pellicciotti, 2011). Furthermore, forcing the MG-TG from LWS (LWS-MG_d) in the model outperformed TGs dependent on an hourly cloud factor (Juszek and Pellicciotti, 2013; Petersen and others, 2013). It is likely that the cloud factor poorly represents the variations of cloud development across the whole glacier during partly cloudy (C1) hours. It is possible that partly cloudy hours reflect warmer T_a partly due to convective heating from the debris in preceding hours when shortwave radiation was direct, which may then act to skew the overall average TG of each cloud factor.

On-glacier T_a was compared with two proximal off-glacier sites, revealing an absence of the glacier-boundary effect reported for debris-free ice surfaces (Greuell and Böhm, 1998; Shea and Moore, 2010). Previous work has found that over debris, katabatic wind is generally absent (Brock and others, 2010), though to the authors knowledge, no studies have investigated this boundary layer effect in detail. On-glacier T_a at LWS was found to exceed that of OG by $\sim 0.2^\circ\text{C}$ on average, and up to 1°C under cloudy conditions. The release of heat from debris is a likely cause of these differences for C3 conditions as the locations of LWS and OG are very similar (see Fig. 1). This finding may have

important implications for future melt modelling studies over debris that utilise off-glacier station data.

Areas of thin debris cover experience more rapid rates of ablation (such as that measured at TT9 and TT12) and are also more sensitive to T_a variations and the choice of temperature distribution method. Importantly, with the exclusion of ice cliffs, areas of thinner debris and exposed ice are evident only up-glacier, and as such forcing T_a from on-glacier/OG locations near the glacier terminus results in more pronounced effects of constant TGs (i.e. TT12 – Fig. 7). Site selection for distributed energy-balance studies utilising only single on-glacier stations over debris may therefore be important and requires consideration of a representative glacier area. The choice of LWS as the on-glacier site for single station TGs was due to the debris thickness representing an approximate average for the glacier (Brock and others, 2010; Foster and others, 2012).

T_a was found to be locally depressed over thin debris sites (i.e. TT7) due to removal of the insulating effect of thicker debris, a positive sensible heat flux (towards the surface) and lower longwave emission from the surface. Differences in low ablation beneath thick moraine debris (TT8) and high ablation under thin debris in ‘intermoraine’ troughs enhance the topographic variation and leads to cold air drainage into areas such as TT7 possibly as an extension of katabatic flow from debris-free up-glacier surfaces. These local temperature depressions are only found on the upper part of the debris-covered zone, as gravitational redistribution of debris quickly infills the valleys down glacier, eliminating both the local cooling effect and systematic topographic variation. However, incorporating these T_a depressions into the model resulted in a maximum of 0.37% less total ablation relative to AD_d . These effects appear very small compared with the overall ablation differences in this study, though they were parameterised only with the knowledge of T_a at this one location and were modelled simply as a function of elevation using the regression relationship between TT8 and TT7 which is unlikely to fully account for the boundary layer processes at work. Furthermore, the effects of this potential cold air drainage could vary due to the scale of the topographic troughs and the increased fetch of the wind down glacier.

In general, it has been found that variation in T_a has only a small effect on the overall modelled ablation as a result of the strong control of supraglacial debris thickness. Fyffe and others (2014) found a slightly greater sensitivity of Miage Glacier to artificial increases in T_a , though accounted for the glacier tributaries including steep bare ice seracs (e.g. Mont Blanc Glacier) with high surface roughness values and thus large increases in calculated sensible heat flux. The sensitivity to T_a was found here to be quite small in comparison with findings of model sensitivity to debris thermal conductivity and emissivity of Miage Glacier (Reid and Brock, 2010).

A common approach is to model ablation using empirical temperature-index models that place greater emphasis on T_a , even given the separation of a shortwave radiation term (Pellicciotti and others, 2005). The work presented here demonstrates the suitability of a linear TG in deriving air temperature for a distributed energy-balance model of a debris-covered glacier and provides some analysis of why a linear TG is appropriate. Future work could benefit from testing the common assumptions found in this work with a more

simplicistic debris enhanced temperature-index model (Ragettli and others, 2015).

8. CONCLUSIONS

Near-surface air temperature (T_a) was monitored on the debris-covered Miage Glacier using a dense network of 19 stations over a period of 89 days in summer, 2014. Results from >31 000 hourly observations over a ~750 m elevation range reveal a strong, statistically significant relationship of T_a with elevation under all meteorological conditions. In the absence of data, model studies for debris-free glaciers typically extrapolate T_a from a single off-glacier station assuming a constant linear TG of $-0.0065^\circ\text{C m}^{-1}$ (Arnold and others, 2006; Nolin and others, 2010), which has been shown to poorly account for the boundary layer effects over bare ice (Petersen and others, 2013; Ayala and others, 2015). In contrast, this study finds that application of a locally derived, constant TG (MG–TG) over debris acts as a suitable estimation of T_a . The MG–TG during the 2014 ablation season ($-0.0088^\circ\text{C m}^{-1}$) is found to match that for a previous year (Brock and others, 2010) and at debris-covered glaciers in different parts of the world (Han and others, 2008), leading to the possibility of model transferability where meteorological data are available and knowledge of debris thickness is accounted for. Due to the convective heating over the debris surface, the application of the ELR is generally unsuitable for distributing T_a to higher elevations where large overestimates occur, although produces only maximum differences of 4.3% compared with an all-data model run with piecewise extrapolation between all on-glacier stations. The absence of a distinct glacier-boundary layer effect over debris results in only a small difference between on-glacier and off-glacier T_a forcing and thus we conclude that distributing T_a from an off-glacier location is thought to be generally acceptable for debris-covered glaciers. For ice beneath thicker debris, sensitivity to T_a variations is dampened and the effects of less negative TGs (ELR) are typically smaller. However, for areas of thin and patchy debris within the upper reaches of Miage Glacier (~TT9/TT12) where the effects of constant TGs are more pronounced and ablation is measurably more rapid, the sensitivity to T_a in the model is greater. Considering the data intensive nature of this study, understanding the importance of T_a within more simplistic empirical ablation models would be a suitable progression.

T_a lower than that estimated by the MG–TG occurred at an ‘intermoraine’ valley site of thin debris cover, suggesting boundary layer cooling and possible cold air drainage may be locally important. Thus, while differences shown here are small and rather insignificant to the modelling of Miage glacier; the effect may be more significant at other sites with more extensive regions of ‘intermoraine’ debris. Considering the strong governance of debris thickness in a distributed energy-balance model, future work should emphasise the study of debris thickness variations and its evolution in time and space.

ACKNOWLEDGEMENTS

T. Shaw is the recipient of a Natural Environment Research Council (NERC) research studentship. We thank M. Vagliasindi and J.P. Fosson of Fondazione Montagna Sicura for logistical support at the field site and W. Smith

and Northumbria University undergraduate students for assistance in setting up and taking down the stations. The air temperature data from the Lex Blanche station and the VDA DEM were kindly provided by Regione Autonoma Valle d'Aosta (Modello Altimetrico Digitale della Regione Autonoma Valle d'Aosta aut. n. 1156 del 28.08.2007). The airborne LiDAR data (2010 DEM) were provided by the NERC Airborne Research and Survey Facility (projects GB07–09 and GB07–10). We thank P. Deline for advice and extensive logistical support and I. Juszak for help with derivation of cloud factors. Finally, we thank scientific editor T. Mölg and two anonymous reviewers who helped to improve the quality of the manuscript.

REFERENCES

- Arnold NS, Rees WG, Hodson AJ and Kohler J (2006) Topographic controls on the surface energy balance of a high Arctic valley glacier. *J. Geophys. Res.*, **111**(F2), F02011 (doi: 10.1029/2005JF000426)
- Ayala A, Pellicciotti F and Shea JM (2015) Modelling 2 m air temperatures over mountain glaciers: exploring the influence of katabatic cooling and external warming. *J. Geophys. Res. Atmos.*, **120**, 1–19 (doi: 10.1002/2015JD023137)
- Brock BW and Arnold NS (2000) A spreadsheet-based (Microsoft Excel) point surface energy balance model for glacier and snow melt studies. *Earth Surf. Process. Landf.*, **25**, 649–658
- Brock BW and *et al.* (2010) Meteorology and surface energy fluxes in the 2005–2007 ablation seasons at the Miage debris-covered glacier, Mont Blanc Massif, Italian Alps. *J. Geophys. Res.*, **115**(D9), D09106 (doi: 10.1029/2009JD013224)
- Brutsaert W (1975) On a derivable formula for longwave radiation from clear sky. *Water Resour. Res.*, **11**(3), 742–744
- Deline P (2005) Change in surface debris cover on Mont Blanc massif glaciers after the “Little Ice Age” termination. *Holocene*, **15**(2), 302–309 (doi: 10.1191/0959683605hl809rr)
- Foster LA, Brock BW, Cutler MEJ and Diotri F (2012) Instruments and Methods A physically based method for estimating supraglacial debris thickness from thermal band remote-sensing data. *J. Glaciol.*, **58**(210), 677–691 (doi: 10.3189/2012jog11194)
- Fujita K and Sakai A (2000) Air temperature environment on the debris-covered area of Lirung Glacier, Langtang Valley, Nepal Himalayas. *IAHS Publ. 264 (Symposium at Seattle 2000 – Debris-Covered Glaciers)*, 83–88
- Fyffe CL and *et al.* (2014) A distributed energy-balance melt model of an alpine debris-covered glacier. *J. Glaciol.*, **60**(221), 587–602 (doi: 10.3189/2014jog13148)
- Gardner AS and *et al.* (2009) Near-surface temperature temperature gradients over arctic glaciers and their implications for temperature downscaling. *J. Clim.*, **22**(16), 4281–4298 (doi: 10.1175/2009JCLI28451)
- Greuell W and Böhm R (1998) 2 m temperatures along melting mid-latitude glaciers, and implications for the sensitivity of the mass balance to variations in temperature. *J. Glaciol.*, **44**(146), 9–20
- Han H and *et al.* (2008) Near-surface meteorological characteristics on the Koxkar Baxi Glacier, Tianshan. *J. Glaciol. Geocryol.*, **30**, 967–975
- Han H, Wng J, Wei J and Liu S (2010) Backwasting rate on debris-covered Koxkar glacier, Tuomuer mountain, China. *J. Glaciol.*, **56**(196), 287–296 (doi: 10.3189/002214310791968430)
- Immerzeel WW, Petersen L, Ragetti S and Pellicciotti F (2014) The importance of observed gradients of air temperature and precipitation for modeling runoff from a glacierised watershed in the Nepalese Himalayas. *Water Resour. Res.*, **50**(3), 2212–2226 (doi: 10.1002/2013WR014506)
- Juen M, Mayer C, Lambrecht A, Han H and Liu S (2014) Impact of varying debris cover thickness on ablation: a case study for Koxkar Glacier in the Tien Shan. *Cryosphere*, **8**(2), 377–386 (doi: 10.5194/tc-8-377-2014)
- Juszak I and Pellicciotti F (2013) A comparison of parameterizations of incoming longwave radiation over melting glaciers: model robustness and seasonal variability. *J. Geophys. Res. Atmos.*, **118**(8), 3066–3084 (doi: 10.1002/jgrd50277)
- Li X and Williams MW (2008) Snowmelt runoff modelling in an arid mountain watershed, Tarim Basin, China. *Hydrol. Proc.*, **22**, 3931–3940 (doi: 10.1002/hyp)
- Machguth H, Paul F, Hoelzle M and Haerberli W (2006) Distributed glacier mass-balance modelling as an important component of modern multi-level glacier monitoring. *Ann. Glaciol.*, **43**, 335–343 (doi: 10.3189/172756406781812285)
- Marshall SJ, Sharp MJ, Burgess DO and Anslow FS (2007) Near-surface-temperature temperature gradients on the Prince of Wales Icefield, Ellesmere Island, Canada: implications for regional downscaling of temperature. *Int. J. Climatol.*, **27**, 385–398. (doi: 10.1002/joc)
- Marty C and Philipona R (2000) The clear-sky index to separate clear-sky from cloudy-sky situations in climate research. *Geophys. Res. Lett.*, **27**(17), 2649–2652
- Mihalcea C and *et al.* (2006) Ice ablation and meteorological conditions on the debris-covered area of Baltoro glacier, Karakoram, Pakistan. *Ann. Glaciol.*, **43**, 292–300 (doi: 10.3189/172756406781812104)
- Minder JR, Mote PW and Lundquist JD (2010) Surface temperature temperature gradients over complex terrain: lessons from the Cascade Mountains. *J. Geophys. Res.*, **115**(D14), D14122 (doi: 10.1029/2009JD013493)
- Müller BF and Keeler CM (1969) Errors in short-term ablation measurements on melting ice surfaces. *J. Glaciol.*, **8**(52), 91–105
- Munro BDS (1989) Surface roughness and bulk heat transfer on a glacier: comparison with eddy correlation. *J. Glaciol.*, **35**(121), 343–348
- Nolin AW, Phillippe J, Jefferson A and Lewis SL (2010) Present-day and future contributions of glacier runoff to summertime flows in a Pacific Northwest watershed: implications for water resources. *Water Resour. Res.*, **46**(12), 1–14 (doi: 10.1029/2009WR008968)
- Østrem G (1959) Ice melting under a thin layer of Moraine, and the existence of ice cores in moraine ridges. *Geogr. Ann.*, **41**(4), 228–230
- Pellicciotti F and *et al.* (2005) An enhanced temperature-index glacier melt model including the shortwave radiation balance: development and testing for Haut Glacier d'Arolla, Switzerland. *J. Glaciol.*, **51**(175), 573–587
- Pellicciotti F, Raschle T, Huerlimann T, Carenzo M and Burlando P (2011) Transmission of solar radiation through clouds on melting glaciers: a comparison of parameterizations and their impact on melt modelling. *J. Glaciol.*, **57**(202), 367–381
- Petersen L and Pellicciotti F (2011) Spatial and temporal variability of air temperature on a melting glacier: atmospheric controls, extrapolation methods and their effect on melt modeling, Juncal Norte Glacier, Chile. *J. Geophys. Res.*, **116**(D23), D23109 (doi: 10.1029/2011JD015842)
- Petersen L, Pellicciotti F, Juszak I, Carenzo M and Brock BW (2013) Suitability of a constant air temperature temperature gradient over an Alpine glacier: testing the Greuell and Böhm model as an alternative. *Ann. Glaciol.*, **54**(63), 120–130 (doi: 10.3189/2013AoG63A477)
- Ragetti S and *et al.* (2015) Unraveling the hydrology of a Himalayan watershed through integration of high resolution in-situ data and remote sensing with an advanced simulation model. *Adv. Water Resour.*, **78**, 94–111 (doi: 10.1016/j.advwatres.2015.01.013)
- Reda I and Andreas A (2008) Solar Position Algorithm for Solar Radiation Applications, National Renewable Energy Laboratory, Technical Report NREL/TP-560-34302, US Department of Energy, Oak Ridge
- Reid TD and Brock BW (2010) An energy-balance model for debris-covered glaciers including heat conduction through the debris layer. *J. Glaciol.*, **56**(199), 903–916
- Reid TD and Brock BW (2014) Assessing ice-cliff backwasting and its contribution to total ablation of debris-covered Miage glacier, Mont Blanc massif, Italy. *J. Glaciol.*, **60**(219), 3–13 (doi: 10.3189/2014jog131045)

- Shea JM and Moore RD (2010) Prediction of spatially distributed regional-scale fields of air temperature and vapor pressure over mountain glaciers. *J. Geophys. Res.*, **115**(D23), D23107 (doi: 10.1029/2010JD014351)
- Takeuchi Y, Kayastha RB, Naito N, Kadota T and Izumi K (2001) Comparison of meteorological features in the debris-free and debris-covered areas of Khumbu Glacier, Nepal Himalayas, in the premonsoon season, 1999. *Bull. Glaciol. Res.*, **18**, 15–18
- Wheler BA, Maccougall AH, Petersen EI and Kohfeld KE (2014) Effects of temperature forcing provenance and extrapolation on the performance of an empirical Glacier-Melt model. *Arct. Antarct. Alpine Res.*, **46**(2), 379–393

MS received 9 June 2015 and accepted in revised form 2 November 2015