

Proceeding

SCESCM 2012 Sustainable Civil Engineering Structures and Construction Materials

Yogyakarta, September 11 – 13, 2012

Editors :

Priyosulistyo, Suhendro B., Kanie S., Satyarno I., Senjutichai T.,
Triwiyono A., Sulistyo D., Siswosukarto S., Awaludin A.

Departement of Civil and Environmental Engineering
Faculty of Engineering
Universitas Gadjah Mada



ORGANIZING ASSOCIATION :



EDITORS :

Priyosulistyo
Bambang Suhendro
Shunji Kanie
Iman Satyarno
Teerapong Senjutichai
Andreas Triwiyono
Djoko Sulistyono
Suprpto Siswosukarto
Ali Awaludin

Published by :

Department of Civil and Environmental Engineering
Universitas Gadjah Mada, Yogyakarta, INDONESIA
Website : <http://tsipil.ugm.ac.id>
Tel : +62-274-545675
Fax : +62-274-545676

ISBN : 978-602-95687-7-6



Copyright ©2012 by Department of Civil and Environmental Engineering, UGM

The texts of the papers in this volume were set individually by the authors or under their supervision. Only minor corrections to the text may have been carried out by the publisher. By submitting the paper in the 1st International Conference on Sustainable Civil Engineering Structures and Construction Management, the authors agree that they are fully responsible to obtain all the written permission to reproduce figures, tables, and text from copyrighted material. The authors are also responsible to give sufficient credit included in the figures, legends, or tables. The organizer of the conference, reviewers of the papers, editors, and the publisher of the proceedings are not responsible for any copyright infringement and the damage they may cause.



ORGANIZING ASSOCIATION

Departement of Civil and Environmental Engineering
Faculty of Engineering
Universitas Gadjah Mada, Indonesia

Division of Engineering and Policy for Sustainable Environment
Faculty of Engineering
Hokkaido University, Japan

Institute of Concrete Structures and Building Materials (IMB)
Faculty of Civil Engineering, Geo, and Environmental Sciences
Karlsruhe Institute of Technology, Germany

CONFERENCE CHAIRS

Prof. Bambang Suhendro, Universitas Gadjah Mada
Prof. Tamon Ueda, Hokkaido University

CONFERENCE SCIENTIFIC COMMITTEE

Prof. Priyosulistyo, Indonesia (chair)
Prof. Shunji Kanie, Japan
Prof. Iswandi Imran, Indonesia
Prof. Benjamin Lumantarna, Indonesia
Prof. I Gusti Putu Raka, Indonesia
Prof. Teerapong Senjuntichai, Thailand
Prof. Mohd Zamin Jumaat, Malaysia
Prof. Iman Satyarno, Indonesia
Prof. Harald S Mueller, Germany
Assoc. Prof. Teng Susanto, Singapore
Prof. Toshiro Hayashikawa, Japan
Prof. Widiadjana Merati, Indonesia
Prof. Tamon Ueda, Japan
Prof. Donguk Choi, Korea
Prof. Somnuk Tengtermsirikul, Thailand
Prof. Y W Chan, Taiwan
Assoc. Prof. Monica Snow, USA
Assoc. Prof. Bambang Supriyadi, Indonesia
Assoc. Prof. Indra Djati Sidi, Indonesia
Dr. Biemo W Soemardi, Indonesia
Dr. Terry Webb, New Zealand

CONFERENCE ORGANIZING COMMITTEE

Dr. –Ing. Andreas Triwiyono

Dr. Muslikh

Dr. –Ing. Djoko Sulisty

Suprpto Siswosukarto, Ph.D

Toriq Agus Ghuzdewan, MSCE

M. Fauzie Siswanto, M.Sc

Arief Setiawan Budi Nugroho, Ph.D

Ali Awaludin, Ph.D

Ashar Saputra, Ph.D

Akhmad Aminullah, Ph.D

Rr. Astin Prinawati, S.T.

CONFERENCE SPONSORS

- HAKI, Indonesian Society of Civil and Structural Engineering
- PII, Institution of Engineers Indonesia
- JSCE, Japan Society of Civil Engineers
- ACF, Asian Concrete Federation
- PT. Indocement Tunggal Prakarsa
- PT. Holcim Indonesia
- PT. Adhi Karya (Persero), Tbk.



Asian Concrete Federation





Dear Participants,

A year preparation for The 1st International Conference on Sustainable Civil Engineering Structures and Construction Materials has already been elapsed. Announcement for abstracts and full papers submission has also been delivered through electronic mail to many related domestic and foreign universities as well as public / private institutions in Europe and Asian Countries since the beginning of this year. Up to the closing date of the abstract submission, more than 63 abstracts have been submitted from the USA, the UK, the Germany, the Switzerland, the Japan, the Taiwan, the Singapore, the Thailand, the Pakistan and the Iran.

But unfortunately, for many reasons not all participants submitting their abstracts proceeded with their full papers on the appointed date. For this reason the organizing committee decided to extend the period of the submission. As the number of the submitted full papers was less than we expected, not all reviewers were involved in the review process. The organizing committee realizes that providing a good quality of papers is not just a matter of writing itself, but a comprehensive knowledge. Therefore, the organizing committee does understand to prospective participants whom are not able to finish writing on the scheduled date. The organizing committee still think that a number of 44 full papers will be reasonably enough to host this International Conference for the first time. The organizing committee do believes that in the next International Conference on SCESCM, the adequate time for preparing full papers can be accommodated by the organizing committee for involvement of more participants.

As the chairperson of scientific committee, anyway, would like to thank for the generosity and help of the reviewers who have reviewed and delivered their comments. I also would like to say sorry to all reviewers for any inconvenience that may happen during this review process.

Prof. Priyosulistyo

Chairperson of Scientific Committee The 1st International Conference on SCESCM



Cover Page	i
Editor Page	ii
Conference Organization	iii
Preface	v
Welcoming Speech	vi
Table of Contents	viii
Keynote & Invited Speakers	
1. Sustainable Design Approaches – From Durable Concrete to Service Life Design for Concrete Structures <i>Harald S. Müller</i>	2
2. The Role of Structural Health Monitoring in Sustainability of Civil Engineering Structures <i>Bambang Suhendro</i>	16
3. Service Life Prediction of Concrete Structures Under Combine Effects <i>Tamon Ueda</i>	26
4. Utilization of Existing Buildings as Vertical Evacuation Facility at Indonesia Tsunami Potential Areas <i>Iman Satyarno</i>	36
5. Effect of Change of Stiffness and Damping on the Strength Prediction of Reinforced Concrete Building Structures Using Microtremor Analysis <i>Priyosulistyo</i>	46
6. Sustainable Development in Vulnerable Environments : Difficulties in Cold Regions Engineering and Construction <i>Shunji Kanie</i>	53
7. The Latest Development of Green Concrete in Indonesia <i>Iswandi Imran</i>	62
8. Development of Seismic Risk Based Design for Buildings in Indonesia <i>Indra Djati Sidi</i>	70
Structural Engineering	
1. Forensic Engineering on Cause of Tunnel Roof Cave-In Triggered by Simultaneous Blasting in Dam Project, West Java, Indonesia <i>C.A. Makarim, D. Junaidy, G. Andika Pratama</i>	77
2. Solving Structural Optimization Problem Using Bare-Bones Particle Swarm Optimization <i>D.K. Wibowo, M-Y. Cheng, D. Prayogo</i>	82
3. Analytical Investigation of Seismic Performance of Viaduct Bridge System with Seismic Isolation Bearing and Another Hybrid Rigid Frame Connections <i>R. Al Sehnawi, A. Nakajima, H, Al Sadeq</i>	90
4. Continous and Automatic 3-D Dam Monitoring Using Robotic Total Station : A Case Study at Sermo Dam, Yogyakarta <i>Sunantyo T.A., Suryolelono K. B., Djawahir F., Adhi A.D., Swastana A.</i>	98
5. FE Analysis and Centrifugal Test of Raft Foundation in Ground Subsidence Condition <i>T. V. Tran., T. Boonyatee., M. Kimura</i>	106

6. Experimental Study on Confinement Effect of Hoop Reinforcing Bar for New Shear Connector Using Steel Pipe <i>Y. Matsuo, T. Ueda, H. Furuuchi, R. Yamaguchi, K. Nakayama</i>	112
7. Puching Shear Behavior of Overlay Strengthened RC Slab Under Traveling Wheel-Type Fatigue Loading <i>Y. Shimanaka, T. Ueda, H. Furuuchi, D. Zhang, T. Tamura, S-C. Lim</i>	117
8. Lateral Load-Slip Curve of Steel-wood-steel Bolted Timber Joints Composed of Several Layers with Different Specific Gravities <i>E. Pesudo, A. Awaludin, B. Suhendro</i>	124
9. Finite Element Modeling of the Transition Zone Between Aggregate and Mortar in Concrete <i>Han Ay Lie, Parang Sabdono, Joko Purnomo</i>	130
10. Shear Strength of Normal to High Strength Concrete Walls <i>J. Chandra, S. Teng</i>	138
11. Nonlinear Analysis of Reinforced Concrete Beams Using FEM with Smeared Crack Approach, Mohr's Failure Criteria, and The Tomaszewicz Model <i>Sri Tudjono, Ilham Maulana, Lie Hendri Hariwijaya</i>	146
12. Flutter Analysis of Cable Stayed Bridge <i>Sukamta</i>	154
13. Lesson Learned From The Damage Of Academic Buildings Due To Earthquake in Padang, Sumatera <i>Djoko Sulistyto, Suprpto Siswosukarto, Priyosulistyo, Andreas Triwiyono, Ashar Saputra, Fauzie Siswanto</i>	157
14. The Flexural Behavior in Perpendicular Direction of Concrete Brick Walls with Wiremesh Reinforcement and Their Application for Simple Houses <i>N. Wardah, A. Triwiyono, Muslikh</i>	166

Material Engineering

1. Mechanical Properties of Gunny Sack Fiber Concrete <i>Antonius, Himawan Indarto, Devita Kurniastuti</i>	172
2. Development and Optimization of Cement Based Grouting Materials <i>R. Breiner, E. Bohner, H. S. Müller</i>	177
3. A Review on Test Results of Mechanical Properties of Bamboo <i>I.G.L.B. Eratodi, A. Triwiyono, A. Awaludin, T.A. Prayitno</i>	186
4. Application of Wood Stave Pipeline in Seropan Caves <i>A. Hayuniati, A. Awaludin, B. Suhendro</i>	193
5. The Characteristic of Ultrasonic Pulse Velocity (UPV) On Mortar With Polypropylene Fibers As Additives <i>Faqih Ma'arif, Priyosulistyo, Hrc</i>	199
6. Precast Concrete Construction : A Green Construction Case Study : Comparison of Construction Energy and Environmental Influence in Low Cost Housing Construction in Batam <i>Hari Nugraha Nurjaman, Haerul Sitepu, H.R. Sidjabat</i>	207
7. Evaluation of ISO 22157-2 Test Method for Tension Parallel to Grain of Petung Bamboo (Dendrocalamus asper) <i>I.S. Irawati, B. Suhendro, A. Saputra, T.A. Prayitno</i>	216
8. Compression Fracture Energy of Cement Treated Sands <i>K. A. Tariq, T. Maki</i>	223
9. Effects of Steel and Polypropylene Fiber Addition on Interface Bond Strength Between Normal Concrete Substrate and Self-Compacting Concrete Topping <i>Slamet Widodo, Iman Satyarno, Sri Tudjono</i>	228
10. Influence Of Portland Cement Paste Quantity and Quality on Early Age Compressive Strength of Mortar <i>Yohannes Lim</i>	236

11. Study on the Durability of Alkali Activated Binder and Geopolymer Concrete – Chloride Permeability and Carbonation <i>Andi Arham Adam, David W. Law, Tom Molyneaux, Indubhushan Patnakuni</i>	240
12. Long-Term Durability Performance of Green Concrete for the Marine Environment <i>T. Y. Darren Lim, Susanto Teng</i>	247
13. Design and Production of FRP Composite Roofing Sheets <i>Djoko Setyanto, Jamasri, Bambang Suhendro, Alva Edy Tontowi</i>	254
14. The Effect of Leaching of CCB4 Preservative Material on Tensile Strength of 2 Species of Bamboo <i>M. Fauzie Siswanto, Hrc. Priyosulistyo, Suprpto, T.A. Prayitno</i>	260
15. Artificial Intelligence Approaches for Optimizing High-Performance Concrete Mix Design <i>D. Prayogo, M.-Y. Cheng, D. K. Wibowo</i>	267
16. Determination of Tensile Properties of Concrete at Early Ages on Large Scale Specimens <i>Suprpto Siswosukarto</i>	274
17. Use of Bamboo For House Retrofitting In Padang Post-Earthquake 30 September 2009 <i>Etri Suhelmidawati, Wendi Boy, Riki Adriadi, Rekana Zamzarena</i>	281
18. Research on the Influence of Coal Ash as Filler in Paved Mixed AC-WC <i>Syaiful, Setiana Mulyawan</i>	287
19. Development of Structural Walls Made from LVL Sengon (<i>Paraserianthes falcaria</i>) : Basic Mechanical Properties <i>A. Awaludin</i>	299
20. Waste Utilization of Coal Ash and Tailings as Bricks <i>Arif Susanto, Hendrikus Budyanto, Edi Putro</i>	303

Construction Management

21. Reliability-based ME-MCDA for Sustainable Global Energy Supply Technology Assessment : Net Energy Balance and Density Considerations <i>Citra Satria Ongkowijoyo</i>	307
22. Minimizing Construction Cost and CO2 Emission Problem by Imitating the Behavior of Ant Colony <i>D. Prayogo, M.-Y. Cheng, D. K. Wibowo</i>	316
23. Value Engineering In Construction Method Rusunawa Prototype Building 5 Floor <i>Dwi Dinariana, Imia Lukito</i>	321
24. Model of Public Private Partnerships for Develop Settlement Infrastructure in Jakarta <i>Fitri Suryani, Tommy Ilyas, Suyono Dikun, Suparti A. Salim</i>	327
25. Community –Based Flood Hazards Mapping for Risk Reduction in Flood Prone Areas : Case Study at Kudus Regency, Kudus <i>Catur Basuki Setyawan</i>	334
26. Multicriteria Decision Making of Power Plant and its Impact on The Living Standard Using Extended Graph Theory and Matrix Method Under Fuzzy Environment <i>Citra Satria Ongkowijoyo</i>	347

Effects of Steel and Polypropylene Fiber Addition on Interface Bond Strength between Normal Concrete Substrate and Self-Compacting Concrete Topping

Slamet Widodo

Doctoral Student at Department of Civil Engineering, Diponegoro University, Semarang, Indonesia

Iman Satyarno

Department of Civil and Environmental Engineering, Gadjah Mada University, Yogyakarta, Indonesia

Sri Tudjono

Department of Civil Engineering, Diponegoro University, Semarang, Indonesia

Abstract: Based on facts that the composite action in semi-precast and strengthened structural system depends on the bond strength of the interface between concrete faces of different ages, this preliminary research is aimed to investigate effects of mixed polypropylene (PPF) and steel fiber (SF) addition on the hardened properties of Self-Compacting Concrete (SCC) and its bond strength when used as topping layer on normal concrete substrate. Effects of hybrid fiber addition on the hardened properties of SCC were investigated based on the compressive, splitting tensile and flexural strength of concrete specimens which is tested in 28 days of age. In the next step, the tensile and shear strength of the interface were evaluated using indirect splitting tensile and bi-surface shear test method. In this research, fiber addition were prepared using 1 kg/m^3 PPF and various SF addition ranging from 15 kg/m^3 , 20 kg/m^3 , 25 kg/m^3 and 30 kg/m^3 . Test results indicate that hybrid fiber addition does not affect the compressive strength significantly but it leads positive improvement to the splitting tensile and flexural strength of hardened SCC and also improve the bond strength between SCC and normal concrete. Hybrid fiber addition of 1 kg/m^3 PPF which is combined with 20 kg/m^3 SF can be suggested as optimum composition for Hybrid Fiber Reinforced Self-Compacting Concrete (HyFRSCC) that will be used as topping or overlay material based on its hardened properties and interface strength.

Keywords: SCC, hardened properties, interface strength, polypropylene, steel fiber.

1 INTRODUCTION

In construction field, the problem that related with different ages of concrete layers, both for new structures, strengthening and rehabilitation of existing ones become more prominent. Proper bond strength at the interface is required for composite action between new and old concrete. The strength capacity of tensile and shear stresses at the interface between concrete faces of different ages is very

important to create force transfer between pre-cast elements, including add in-situ concrete to pre-cast elements or to existing cast-in-place sections. Even for conventional reinforced concrete construction in which entirely cast-in-situ structures, construction joints are sometimes unavoidable due to geometric or technical considerations. Figure 1 and Figure 2 illustrates the working stresses which can be observed in concrete interface for common structural application.

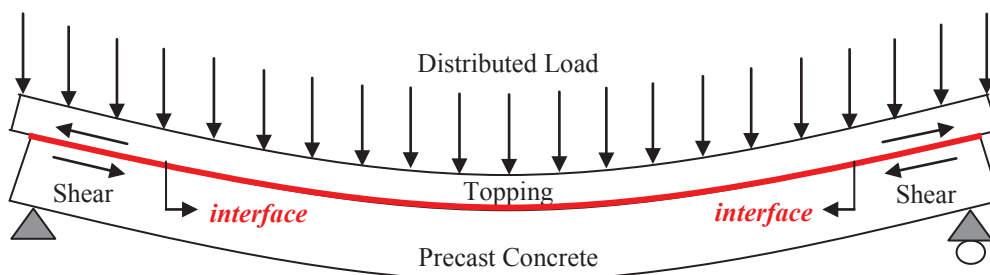


Figure 1. Horizontal shear stress along the interface of a composite flexural member

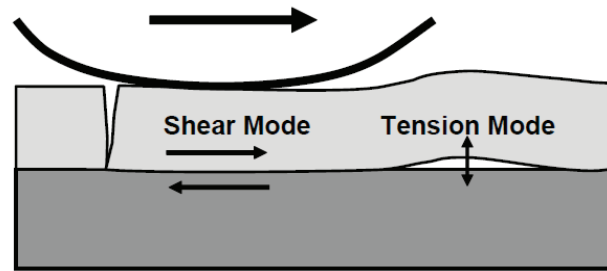


Figure 2. Adhesion stress modes in the upper pavement layers under service conditions (Raab and Partl, 2004)

Nowadays, semi-precast, repair and strengthening technique for concrete structures has been widely used, including of thin layer application of fiber reinforced concrete (FRC) onto the old concrete layer. Addition of steel fibers generally contributes on the energy absorbing mechanism (bridging action), while non-metallic fibers offer its ability to delay the formation of micro-cracks and avoid catastrophic breaking and also has much lower density (Sivakumar and Santhanam, 2007). In order to optimized the benefits of fiber addition in concrete construction, the application of different fiber types into fresh concrete

mixes was introduced and commonly known as hybrid fiber reinforced concrete (HyFRC). It becomes more popular in these recent years and expected to provide better physical and mechanical properties in concrete construction.

Another benefit that possibly obtained by fibers addition in concrete mixture is reducing cracks potential of concrete due to the restrained shrinkage (Hwang and Khayat, 2008). This type of shrinkage mostly found in topping or overlay cases that caused by the difference of shrinkage rate between substrate and topping or overlay layer as shown in Figure 3.

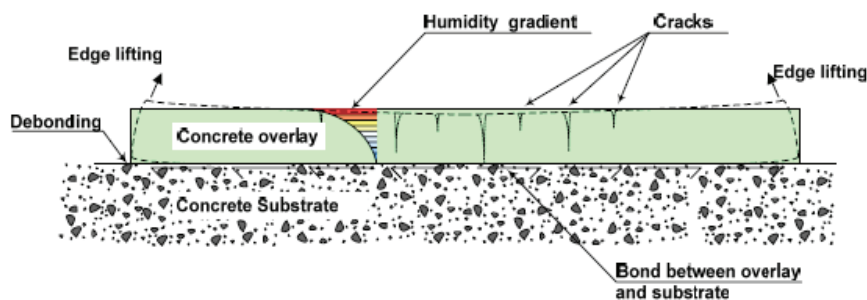


Figure 3. Cracking and edge lifting of a concrete overlay exposed to shrinkage (Carlsworld, 2006)

In the other hand, a continuous development and application of self-compacting concrete (SCC) technology is growing rapidly. The use of SCC offers considerable benefits for thin topping and overlay works due to its ability to flow, spread, and compacting by its own weight. Fibers addition offers positive effects for their ability to limit concrete shrinkage cracks at early age and to enhance some of the concrete properties, but fibers addition in SCC mixes also resulted negative effects on the flowability and passing-ability of fresh SCC (Widodo, 2010). Therefore, proper concrete composition of fiber reinforced self-compacting concrete should be identified.

Based on facts that the performance of semi-precast and strengthened structural system depends on the bonding behavior between old and new concretes, this preliminary research aimed to investigate the effects of hybrid fiber (mixed polypropylene and steel fibers) addition on compressive, splitting tensile and flexural strength of hardened SCC. Furthermore, effects of fiber addition on interface tensile and shear bond strength of HyFRSCC which used as topping or overlay layer on normal concrete substrate is also wanted to be known. Therefore, the optimum addition of hybrid fiber into SCC mixes which aimed to be used as topping or overlay layer can be predicted based on the experimental results.

2. EXPERIMENTAL WORKS

2.1. Materials and Mix Proportion

In this research, polypropylene (PPF) and steel fibers (SF) were chosen and mixed as hybrid fiber. Polypropylene used due to its inexpensive, inert in high pH cementitious environment and easy to disperse. In this research, monofilament polypropylene with 18 μm diameter, 12 mm length, and 0.91 g/cm^3 density were used. Steel fiber chosen as the macro fiber based on its proven ability on the energy absorbing mechanism (bridging action), and its ease to be found. The steel fiber that applied in this research is straight type local steel fiber having 25 mm length, and 0.7 mm of diameter.

The mixtures were prepared with Pozzolan Portland Cement (PPC). Continuously graded crushed

aggregate which has specific gravity of 2.48 and maximum size of 20 mm was used as coarse aggregate as is commonly used the case in SCC mixes. Coarse aggregates were washed to remove fine sandy particles that can hinder the rheological properties of the fresh concrete. Well-graded natural sand which has specific gravity of 2.65 was employed as the fine aggregate. Silica fume, polycarboxylate based superplasticizer, Air Entraining Agent (AEA), and set retarder were also utilized as concrete admixtures in this research. Fiber addition were applied using 1 kg/m^3 of polypropylene fibers (based on the optimum PPF addition that achieved in the previous preliminary research), and various steel fiber addition of 15 kg/m^3 , 20 kg/m^3 , 25 kg/m^3 and 30 kg/m^3 into the mixes. Detail of mixes proportion can be found in the following Table 1.

Table 1. Mix Proportion

Material	Mix Type				
	A	B	C	D	E
Water (lt/m^3)	227.00	227.00	227.00	227.00	227.00
Portland Cement (kg/m^3)	490.00	490.00	490.00	490.00	490.00
Silica fume (kg/m^3)	25.80	25.80	25.80	25.80	25.80
Coarse Aggregate (kg/m^3)	575.00	575.00	575.00	575.00	575.00
Sand (kg/m^3)	950.00	950.00	950.00	950.00	950.00
Superplasticizer (lt/m^3)	4.28	4.28	4.28	4.28	4.28
Air Entraining Agent (lt/m^3)	0.30	0.30	0.30	0.30	0.30
Set Retarder (lt/m^3)	1.45	1.45	1.45	1.45	1.45
Polypropylene (kg/m^3)	1.00	1.00	1.00	1.00	1.00
Steel fibers (kg/m^3)	0.00	15.00	20.00	25.00	30.00

2.2. Test Methods

Fresh properties of SCC were evaluated using slump flow test which is usually required a minimum flow diameter of 600 mm for SCC mixes (EFNARC, 2005). In the first stage of experiment, the compressive, splitting tensile and flexural strength of SCC specimens was investigated. Concrete samples were cured with water immersion method for 28 days.

In the next step, the interface tensile and shear bond strength of HyFRSCC which is used as topping or overlay layer on normal concrete substrate is also investigated. The substrate designed based on Indonesia National Standard of normal concrete mix design with 27 MPa of compressive strength. Concrete substrates were immersed in water for 28 days, and then the topping or overlay layer poured on the SSD substrate, and cured for the next 28 days for interface bond strength tests.

Compressive strength tests for all the variants of concrete mixes with different fiber contents were done on three cylinders of 150 mm in diameter and 300 mm length, according to ASTM C-39. Flexural strength tested based on SNI 03-4154-1996 while Brazilian Tensile Strength test was carried out on three cylinders based on ASTM C-496. The tensile and flexural strength of hardened concrete was taken as the average of those three specimens for each variant.

The interface tensile strength evaluated based on Brazilian tensile strength test which is shown in Figure 4(a). For the interface shear bond strength evaluation, the concrete specimens tested using bi-surface shear test with 150x150x150 mm cubes which is proposed by Momayez et al (2005). The bi-surface shear test method is shown in Figure 4(b). As the results, the interface tensile and shear strength taken as the average of those three specimens for each variant.



(a) Indirect Tensile Test



(b) Bi-surface Shear Test

Figure 4. Interface Bond Strength Test

3. RESULT AND DISCUSSION

3.1. Fresh Concrete Properties

The fresh properties of SCC mixes were evaluated using Slump flow Test set. The measurement of fresh

concrete characteristic using slump flow test is shown in Figure 5. Flowability characteristic of SCC mixes determined based on the average those two main diameters of the spread of fresh concrete using a conventional slump cone.



Figure 5. Slump flow measurement

The results of the fresh concrete spread diameter which resulted from slump flow test can be found in the following Table 2. Based on the results, it can be

observed that the flowability (Slump Flow) of SCC decreases when the presence of polypropylene and steel fiber increased.

Table 2. Slump flow test results

Mix Type	Shortest Flow Diameter (cm)	Longest Flow Diameter (cm)	Average Flow Diameter (cm)
A	67.00	69.00	68.00
B	59.00	63.50	61.25
C	59.00	62.50	60.75
D	58.00	59.00	58.50
E	54.00	56.00	55.00

3.2. Mechanical Properties

Table 3 shows the compressive, splitting tensile and flexural strength of the hardened concrete specimens which are added with various steel fiber dosages into

fresh concrete mixes that contain 0.10% volume fraction of polypropylene fiber which is equal to $\pm 1 \text{ kg/m}^3$, and measured after 28 days of curing.

Table 3. Effects of Hybrid Fiber Addition on Hardened Self-Compacting Concrete Properties

Mix Type	Compressive Strength (MPa)	Splitting Tensile Strength (MPa)	Flexural Strength (MPa)
A	36.00	3.15	3.43
B	34.75	3.40	3.70
C	36.83	4.16	3.99
D	36.15	4.08	3.81
E	32.82	3.33	3.70

Figure 6, Figure 7 and Figure 8 shows the effects of hybrid fiber content on compressive, splitting tensile and flexural strength of the hardened concrete respectively. Test results show that the compressive strength not affected significantly by hybrid fiber addition while the splitting tensile and flexural

strength of concrete samples increase in accordance with the increase of hybrid fiber content up to the fiber combination of 1 kg/m^3 of polypropylene and 20 kg/m^3 of steel fiber.

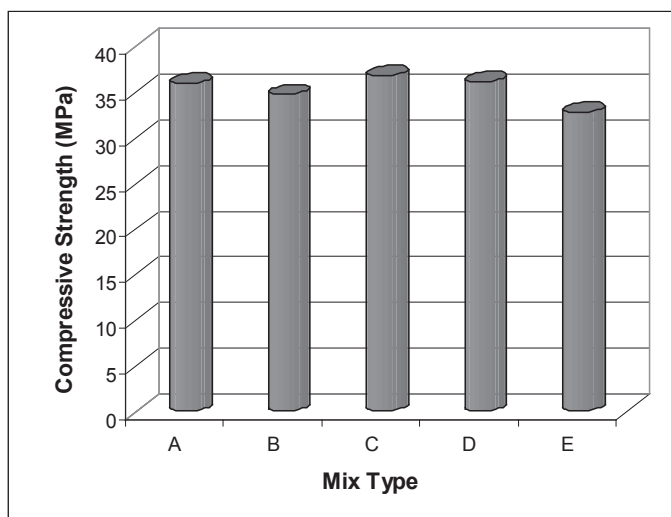


Figure 6. Effects of Hybrid Fiber Addition on Self-Compacting Concrete Compressive Strength

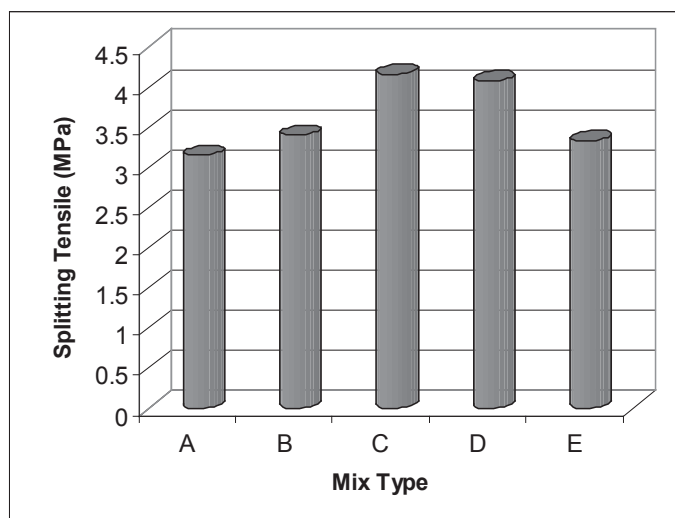


Figure 7. Effects of Hybrid Fiber Addition on Self-Compacting Concrete Splitting Tensile Strength

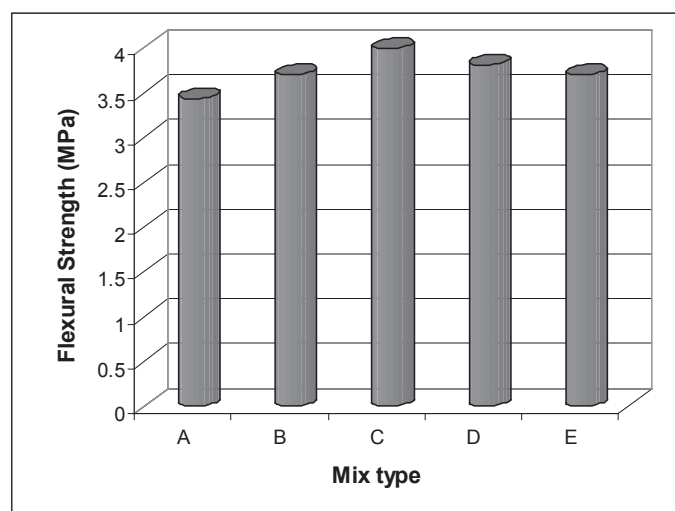


Figure 8. Effects of Hybrid Fiber Addition on Self-Compacting Concrete Flexural Strength

The improvement of splitting tensile up to 32.06% and flexural strength up to 16.33% can be achieved, due to the fact that steel fiber able to bridge the macro-cracks while polypropylene fiber bridges micro-cracks of which growth can be controlled. This leads to a higher strength of the hardened concrete. If the fibers addition passes over the optimum value, the instability of the fresh concrete samples can be observed and realized earlier when these mixes do not spread perfectly in the slump-flow tests. This condition could probably leads to a decrease in concrete strength.

3.3. Interface Bond Strength

Table 4, Figure 9 and Figure10 shows the effect of hybrid fiber addition on indirect tensile and shear bond strength of the interface between normal concrete substrate and fiber reinforced self-compacting concrete topping. The SCC mixes were added with various steel fiber dosages into fresh concrete which is containing 0.10% volume fraction of polypropylene fiber that equal to $\pm 1 \text{ kg/m}^3$. The interface bond strength was measured at 28 days of age after the topping layers cast and cured.

Table 4. Effects of Fiber Addition in the Topping Layer on the Interface Bond Strength between Concrete Faces

Mix Type	Indirect Tensile Strength (MPa)	Shear Strength (MPa)
A	0.444	1.200
B	0.964	2.089
C	0.998	2.267
D	0.871	1.756
E	0.912	1.970

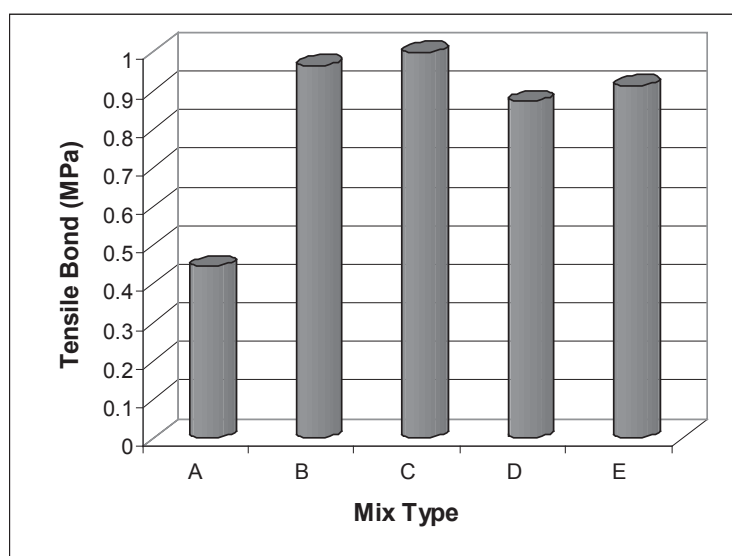


Figure 9. Effects of Hybrid Fiber Addition on Interface Tensile Strength between Self-Compacting Concrete Topping on Normal concrete Substrate

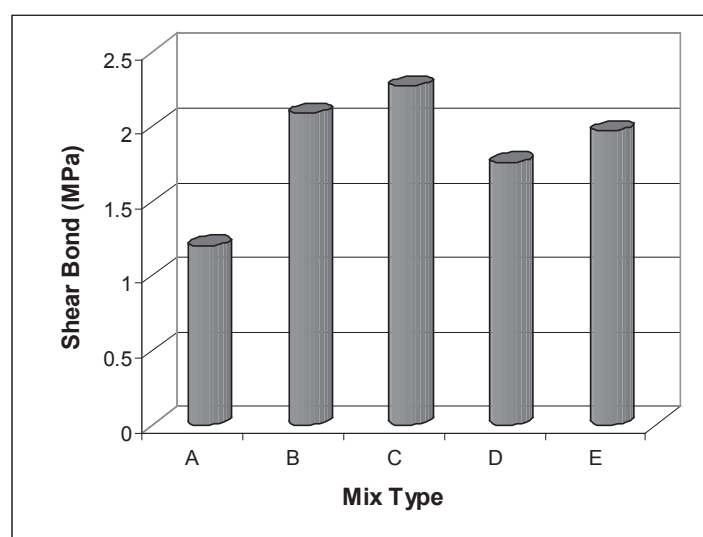


Figure 10. Effects of Hybrid Fiber Addition on Interface shear Strength between Self-Compacting Concrete Topping on Normal concrete Substrate

The improvement of interface indirect tensile up to 124.77% and the interface shear strength up to 88.92% can be achieved, due to the fact that hybrid fibers having better ability in reducing cracks potential of concrete due to restrained shrinkage. This leads to a higher strength of the interface between concrete faces. When the fibers addition passes over the optimum value, the instability of the fresh concrete mixes which was visually observed earlier in the slump-flow tests may have negative effect that lead to a decrease in concrete interface strength.

4. CONCLUSIONS

1. Flowability (Slump Flow) of SCC decreases when the presence of polypropylene and steel fiber increased.
2. The compressive strength of self-compacting concrete samples can not increased significantly by hybrid fiber addition into the mixes.
3. The splitting tensile strength of self-compacting concrete shows 32.06% improvement with an addition of hybrid fibers containing 1 kg/m³ of polypropylene and 20 kg/m³ of steel fiber.
4. The flexural strength of self-compacting concrete increases 16.33% with the application of hybrid fibers that combine 1 kg/m³ of polypropylene and 20 kg/m³ of steel fiber.
5. The interface indirect tensile bond strength between normal concrete substrate and self-compacting concrete topping can be improved up to 124.77% with an addition of hybrid fibers which contain 1 kg/m³ of polypropylene and 20 kg/m³ of steel fiber.
6. Test results indicate that interface shear bond strength between normal concrete substrate and self-compacting concrete topping increases up to 88.92% when hybrid fibers applied with 1 kg/m³ of polypropylene and 20 kg/m³ of steel fiber.

REFERENCES

Carlswärd, J. (2006). "Shrinkage cracking of steel fibre reinforced self compacting concrete overlays Test methods and theoretical modeling." *Doctoral Thesis*, Luleå University of Technology.

EFNARC. (2002). *Specification & guidelines for self-compacting concrete, English ed.* Norfolk UK: European Federation for Specialist Construction Chemicals and Concrete Systems.

EFNARC. (2005). *The European guidelines for self-compacting concrete specification, Production and Use.* Norfolk UK: European Federation for Specialist Construction Chemicals and Concrete Systems.

Okamura, H. and Ouchi, M. (2003). "Self-compacting concrete." *Journal of Advance Concrete Technology*, Vol. 1, No. 1, pp. 5-15.

Hwang, S.D., and Khayat, K.H. (2008). "Effect of mixture composition on restrained shrinkage cracking of self-consolidating concrete used in repair." *ACI Materials Journal*, V. 105, pp. 499-509.

Hsie, M., Tu, C., Song, P.S. (2008). "Mechanical properties of polypropylene hybrid fiber-reinforced concrete." *Materials Science and Engineering A 494*, pp. 153-157.

Momayez, A., Ehsani, M.R., Ramezani pour, A.A., and Rajaie, H. (2005). "Comparison of methods for evaluating bond strength between concrete substrate and repair materials." *Cement and Concrete Research 35*, pp. 748-757.

Momayez, A., Ramezani pour, A.A., Rajaie, H., and Ehsani, M.R. (2004). "Bi-surface shear test for evaluating bond between existing and new concrete." *ACI Materials Journal V. 101, No. 2, March-April 2004*, pp. 99-106.

Sivakumar, A., and Santhanam, M. (2007). "Mechanical properties of high strength concrete reinforced with metallic and non-metallic fibres." *Cement & Concrete Composites 29*, pp. 603-608.

Raab, C., and Partl, M.N. (2004). "Interlayer shear performance: experience with different pavement structures." *3rd Eurasphalt & Eurobitume Congress*. Vienna.

Widodo, S. (2010). "Experimental study on some fresh and mechanical properties of polypropylene fiber reinforced self compacting concrete." *Media Teknik Sipil Volume 10 Nomor 2*, pp.65-70.