



12-1-2004


A Framework for the Coordination of Legged Robot Gaits

Joel D. Weingarten
University of Michigan

Richard E. Groff
University of California, Berkeley

Daniel E. Koditschek
University of Pennsylvania, kod@seas.upenn.edu

Follow this and additional works at: http://repository.upenn.edu/ease_papers

 Part of the [Electrical and Computer Engineering Commons](#), and the [Systems Engineering Commons](#)

Recommended Citation

Joel D. Weingarten, Richard E. Groff, and Daniel E. Koditschek, "A Framework for the Coordination of Legged Robot Gaits", . December 2004.

Copyright 2004 IEEE. Reprinted from *Proceedings of the 2004 IEEE Conference on Robotics, Automation and Mechatronics*, Volume 2, pages 679-686.

This material is posted here with permission of the IEEE. Such permission of the IEEE does not in any way imply IEEE endorsement of any of the University of Pennsylvania's products or services. Internal or personal use of this material is permitted. However, permission to reprint/republish this material for advertising or promotional purposes or for creating new collective works for resale or redistribution must be obtained from the IEEE by writing to pubs-permissions@ieee.org. By choosing to view this document, you agree to all provisions of the copyright laws protecting it.

NOTE: At the time of publication, author Daniel Koditschek was affiliated with the University of Michigan. Currently (July 2005), he is a faculty member in the Department of Electrical and Systems Engineering at the University of Pennsylvania.

A Framework for the Coordination of Legged Robot Gaits

Abstract

This paper introduces a framework for representing, generating, and then tuning gaits of legged robots. We introduce a convenient parametrization of gait generators as dynamical systems possessing designer specified stable limit cycles over an appropriate torus. This parametrization affords a continuous selection of operation within a coordination design plane, inspired by biology, spanned by axes that determine the mix of "feedforward/feedback" and "centralized/decentralized" control. Tuning the gait generator parameters through repeated physical experiments with our robot hexapod, RHex, determines the appropriate operating point - the mix of feedback and degree of control decentralization - to achieve significantly increased performance relative to the centralized feedforward operating point that has governed its previous behavior. The present preliminary experiments with these new gaits suggest that they may permit for the first time locomotion over extremely rough terrain that is almost as reliable, rapid, and energy efficient as the very fastest or most efficient outcomes centralized feedforward gaits can achieve on level ground.

Disciplines

Electrical and Computer Engineering | Engineering | Systems Engineering

Comments

Copyright 2004 IEEE. Reprinted from *Proceedings of the 2004 IEEE Conference on Robotics, Automation and Mechatronics*, Volume 2, pages 679-686.

This material is posted here with permission of the IEEE. Such permission of the IEEE does not in any way imply IEEE endorsement of any of the University of Pennsylvania's products or services. Internal or personal use of this material is permitted. However, permission to reprint/republish this material for advertising or promotional purposes or for creating new collective works for resale or redistribution must be obtained from the IEEE by writing to pubs-permissions@ieee.org. By choosing to view this document, you agree to all provisions of the copyright laws protecting it.

NOTE: At the time of publication, author Daniel Koditschek was affiliated with the University of Michigan. Currently (July 2005), he is a faculty member in the Department of Electrical and Systems Engineering at the University of Pennsylvania.

A Framework for the Coordination of Legged Robot Gaits

Joel D. Weingarten†
jweingar@umich.edu

Richard E. Groff†
regroff@umich.edu

Daniel E. Koditschek†
kod@umich.edu

†Department of Electrical Engineering and Computer Science, The University of Michigan

‡Department of Electrical Engineering and Computer Science, University of California, Berkeley

Abstract—This paper introduces a framework for representing, generating, and then tuning gaits of legged robots. We introduce a convenient parametrization of gait generators as dynamical systems possessing designer specified stable limit cycles over an appropriate torus. This parametrization affords a continuous selection of operation within a coordination design plane, inspired by biology, spanned by axes that determine the mix of “feedforward/feedback” and “centralized/decentralized” control. Tuning the gait generator parameters through repeated physical experiments with our robot hexapod, RHex, determines the appropriate operating point — the mix of feedback and degree of control decentralization — to achieve significantly increased performance relative to the centralized feedforward operating point that has governed its previous behavior. The present preliminary experiments with these new gaits suggest that they may permit for the first time locomotion over extremely rough terrain that is almost as reliable, rapid, and energy efficient as the very fastest or most efficient outcomes centralized feedforward gaits can achieve on level ground.

I. INTRODUCTION

Legged systems locomote by producing periodic limb motions, whose intermittent contacts with the ground impose recurring reaction forces that propel the body mass center. The richly variable nature of possible leg cycles maps onto a huge and usefully diverse range of possible motions. In biological legged systems, this rich behavioral suite is well expressed by the profusion of qualitatively distinct and independently named styles of locomotion or “gaits:” e.g. walk, trot, canter, gallop, prong, and so on. Within each of these styles, biological systems alter performance by varying appropriate tuning parameters and using feedback to alter the details of the cycles that describe these gaits. In this paper we present a system inspired by accounts of biological pattern generation that allows for varying forms of leg coordination, leading to greatly improved locomotive performance when implemented on a physical robot.

We focus our efforts exclusively on RHex (see Figure 1) — a bioinspired hexapod robot whose mobility exceeds all prior documented power- and computation-autonomous legged platforms [1]. Inspired by cockroach locomotion, RHex features compliant legs and a simple mechanical design with only one actuator per leg at each of its “hip” joints [2]. The available biological data suggests that high speed cockroach runners, whose gait stabilization occurs at time constants exceeding anything likely supported by the bandwidth of their neural sensory loops [3], may employ an open loop feedforward style of gait control. Biologists see the gaits of animals as generated by an internal

dynamical system of central pattern generators CPG’s [4], [5], [6] that we will simply term “clocks”. Further inspired by this evidence for the efficacy of feedforward clock driven gait coordination, RHex’s original controller entails an essentially open loop strategy incorporating hand-tuned hip reference trajectories — the “clock” signal depicted in Figure 2. In this “alternating tripod” scheme, the same reference signal is supplied to each leg, except that the left tripod is 180 degrees out of phase from the right (see Figure 2 *right* for the tripods of the walking gait). In concept, the reference trajectory commands slow leg retraction during putative stance, followed by a faster “swing” phase interval, intended to recirculate the leg forward through the air in readiness for the next stance. Physically, each hip actuator applies torque to its leg shaft as regulated by a local PD controller that seeks to eliminate differences between its clock signal and actual shaft position and velocity. Since this local hip feedback provides neither information about the true state of the leg (e.g., is it in stance or in swing?), nor the body (e.g., what is its present pose?), the robot operates in a task open loop manner.

Simplicity notwithstanding, RHex’s control strategy lends the robot impressive mobility, negotiating obstacles higher than its leg length [1] at speeds well above a bodylength (0.5m) per sec over a wide variety of different terrains. That original centralized feedforward paradigm has proven extremely successful, yielding stable dynamical gaits over a varied set of terrains. Nevertheless, it seems intuitively clear that the introduction of information about the legs’ states and the robot’s body should yield still greater performance benefits. Considering the highly dynamical nature of RHex’s running gaits, typically entailing aerial phases in excess of 35% [7], the need for feedback should become increasingly urgent over increasingly rough terrain. Indeed, empirical evidence confirms the limitations of purely open loop control as expected. RHex fails to negotiate “extreme” terrain at “extreme” speeds: roll and pitch oscillations destabilize the robot, causing violent yawing to the left or right or, eventually, actual flipping over obstacles exceeding 70 percent the leg length and at speeds exceeding two bodylengths per second.

What information should be collected, and how should it be used to adjust the reference signals? Such questions can be answered quite rigorously in the setting of linear time invariant systems within which theory there exist powerful, computationally effective techniques for achieving a desired quality and quantity of performance in the face of an appropriately mod-

eled range of perturbations. However everything about RHex is nonlinear - its kinematics [1] and dynamics [8], actuator constraints, and sensor suite [9] - and no presently available theoretically sound methodology exists for rational control design in this setting. Inspired by biology, we turn instead to a developing body of intuition and practice emerging from a decade's work with dynamically dexterous machines [10],[11],[12] that has recently begun to yield formal design prescriptions as well [13]. Inspired by the engineer's desire for simple robust design, we introduce in this initial exploration the most minimal extension to RHex's original sensory suite we can imagine, addressing the question of how to couple simple features of the mechanical state space back into a robot's internal state space before moving ahead with more sophisticated sources of feedback and their concomitantly more complicated interactions.

At a sufficiently high level, such questions can be addressed rationally by considering first the issue of design and then the matter of operating point. Since the limbs' dynamical coupling is already specified by the mechanical platform and the ambient terrain, the remaining design decisions concern how their internal clocks (i.e. reference trajectory generators) should be coupled to each other and to the limbs. The nature of the internal coupling is constrained only by a robot's computational resources. How these clocks are influenced by and affect the limbs and body is much more bound up in the details of the available sensory suite and actuator electronics. In this research, we have chosen for our internal architecture the framework of coupled phase regulation introduced by Klavins [14],[13] with a new clock deformation scheme generalizing the original RHex two phase (slower-faster) arrangement. This internal clock system will be introduced in Section II-D. The major remaining design choice — the coupling between the clock system and the motor system — will be detailed in Section II-C.

The nature of the mechanism, the clocks, and their mutual couplings once determined, operating point selection now occurs within a coordination space characterized by at least two distinct architectural "axes:" the relative strength of the feedback and feedforward components; and the relative influence of the clocks on each other. In this view, choice of operating point reflects a decision of how centrally to bring to bear the information originating at more distal body locations. Even a brief perusal of the biological literature on locomotion coordination schemes offers copious evidence [15], [16], [4], [5], [17], [18], [6], that different animals confronting differing environments operate in different regions of this design space. Closer to hand, intuition based upon empirical experience with RHex gives clues as to what style of coordination may be appropriate for what sort of environment. Both our physical experience and biology inspires our search for a parameterized gait generation system that permits exploration of the feedforward-feedback and centralized-decentralized axes of the controls space. A discussion of how to select the operating point in this architectural design space as a function of environmental conditions is presented in Section III.

Successfully exploiting the potential benefits of the architectural axes is clearly predicated on successfully using sensors to inform feedback. Recently, biologists have begun to study how minimal sensor information is adequate for producing impres-

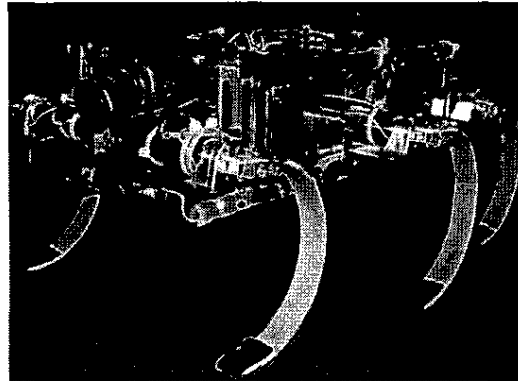


Fig. 1. RHex is a power- and computation-autonomous robotic hexapod, featuring compliant legs and a simple mechanical design. The chassis measures 48cm x 22cm x 12.5cm, and the distance from hip to ground in normal standing posture is 15.5cm.

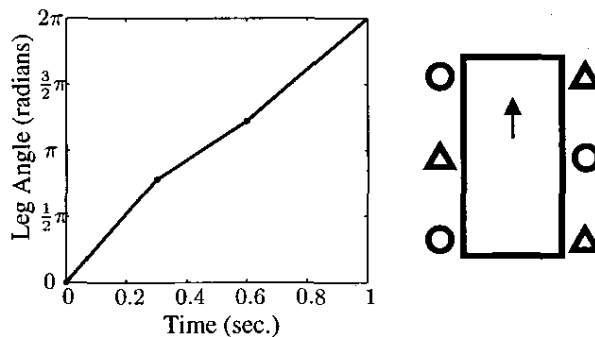


Fig. 2. *Left* - The "clock" signal that drives the legs for centralized-feedforward walking. *Right* - Tripods of the walking gait.

sive and complicated behaviors [19]. Additionally, in RHex, we have seen how simple yet intelligent design enables our system to display impressive performance. In designing feedback options for the system presented in this paper we have again chosen to take inspiration from biology, and use a minimal complement of sensory information. Specifically we give each of RHex's hip controllers just enough new information to determine when the leg it is driving has made contact with the ground ("stance") and when it is swinging through air ("flight"). The details of how this information derived and used is given in section II-C

II. GAIT GENERATION SYSTEM

Gaits and gait generation have been addressed variously in the literature, without consensus on a single definition for either. The term "gait" sometimes connotes just the footfall pattern of the behavior [20], and other times includes the full kinematic trajectories of the joints. We will use the term to describe certain properties of the generated limit cycle to be introduced. Our focus on the phase space representation of gait seems most natural given the morphology of our robotic platform, RHex, in which the legs may be rotated arbitrarily often about the hip, as compared to many legged systems where the joints move within some constrained set of angles. There are many alternative frameworks, perhaps the most interesting and most com-

prehensively studied focusing on the role of symmetry rather than morphology [21]. We are also intrigued by recent work of Ijspeert et al. [22] who have used nonlinear oscillators in experiments to learn cyclic behaviors within a framework that bear close similarity to our own.

Define the *gait reference space* \mathcal{R} to be the set of possible virtual leg angles, in the present case $\mathcal{R} \approx \mathbb{T}^2$, the latter symbol denoting the torus¹ — a cross product of two circles, $\mathbb{T}^2 := \mathbb{S}^1 \times \mathbb{S}^1$. In this paper, we will use the term *gait pattern* to denote the homotopy class of a simple closed curve (the embedding of a circle) in the appropriate torus. The intent is to capture by this discrete representation the entire class of reference motions that manifest a desired locomotion “rhythm” (e.g., the ratios of footfalls per stride between leg groups). We will use the term *gait variant* to denote the specific reference cycle itself — the particular choice of embedding, $r : \mathbb{S} \rightarrow \mathcal{R}$, within a specified gait pattern class.

It is not sufficient to specify merely a reference cycle. The need for feedback and decentralization impels us toward gait generators whose reference cycles emerge as limit sets of an appropriately defined dynamical system on the entire reference torus, \mathcal{R} . Specifically, we construct for a gait variant, $r : \mathbb{S} \rightarrow \mathcal{R}$, a gait generator: a dynamical system on \mathcal{R} whose forward limit set includes the asymptotically stable limit cycle defined by v , when decoupled from the robot’s body. The state of this dynamical system, $r \in \mathcal{R}$, that we term the *generated gait*, can be output to serve as an on-line reference trajectory for the actual leg angles. In turn, the state of the leg will be fed back to inform the generated gait. In this paper, we limit our focus exclusively to the local proprioceptive feedback motivated above and detailed below in section II-C. In future work, we will explore more general architectures for — as well as assess the relative value of — feeding back more distributed proprioceptive (e.g., body frame pitching velocity) and even exteroceptive (e.g., range to obstacle) sensory data to the gait generator.

A. Notation

The salient symbols used in this paper are listed below with a brief explanation of their meaning.

Definitions	
χ_s^f	Touchdown boolean
χ_l^f	Liftoff boolean
q	Physical positions of the hip joints
q	Physical positions of a tripod of hips
r	Reference positions of the virtual (bipedal) legs
\tilde{r}	“fanned out” reference hip positions
c	Reference positions of the clocks
q_{td}	Position of the leg at touchdown
q_{lo}	Position of the leg at liftoff
v	Vector of motor voltages

¹We represent \mathbb{T}^k as $\mathbb{R}^k/\mathbb{Z}^k$, equivalent to the unit box $[0, 1]^k$ with opposing faces identified.

B. Motor Level Control

In this section we introduce the dynamical control system governing the robot’s six hip motors — the only actuation available — and motivate and detail the modifications we introduce in order to couple it effectively to the gait generator. Using the standard RHex power electronics and motor shaft encoders detailed in [1], we build a parametrized family of nonlinear controllers whose dynamics are selected to assure stability of the overall coupled motor-clock subsystem.

1) *Saturated Hybrid Hip Actuator Model:* We will find it expedient to lump together the complex effects of the ground reaction forces acting through the legs upon the center of mass and their projection onto the controlled motor shaft at each actuator. This will take the form of a “torque balance” model at each hip — a hybrid system with two distinct phase intervals, $\mathcal{F}_i, \mathcal{S}_i \subseteq \mathbb{S}^1$, to be defined in conjunction with equation (3), below. In the flight phase, $q_i \in \mathcal{F}_i$, the i^{th} leg is not in contact with the ground and its hip dynamics are governed solely by its local shaft inertia and the torques applied from the motor. In stance, $q_i \in \mathcal{S}_i$, the dynamics are determined the leg’s interactions with the ground as well as the body’s Lagrangian mechanics. Given the complexities and the poorly modeled nature of ground contacts, and given the analytical intractability of even simple 2 and 3dof approximations of the legged mechanical system on absolutely flat terrain [8], adding even the most careful available model of a motor’s load has not yet yielded design insight over the course of this inquiry. Instead, we have found it much more useful to replace these complex physical effects and their analytically intractable models with a simple unknown motor load, L_i , introduced as a noise term added to each of the motor shafts,

$$J_i \dot{q}_i = \text{Mot}(\dot{q}_i, v_i) + L_i, \quad (1)$$

where J_i is the motor shaft inertia, v_i is the motor voltage, and Mot will be defined in equation (2), below, and our only assumption about the additive disturbance reflects the physical simplification that a single “massless” leg in flight offers no load at all, i.e., $L_i \equiv 0$ when $q_i \in \mathcal{F}_i$. This assumption also underlies our construction of the primitive leg touchdown sensor model introduced below in equation (3).

Denoting the motor’s stall torque as m_{max} , we follow the standard idealized DC motor model describing the motor torque it delivers to the motor shaft as a function of the input voltage, v , and shaft velocity, ω , that has a saturated torque-speed curve constraint,

$$\mathcal{C} := \{(v, \omega) \in \mathbb{R}^2 \mid v > m_{\text{max}} - k_b \omega\}$$

and unsaturated regime,

$$\mathcal{U} := \{(v, \omega) \in \mathbb{R}^2 \mid v \leq m_{\text{max}} - k_b \omega\}$$

given as

$$\text{Mot}(\omega, v) = \begin{cases} k_m v - k_b \omega & (v, \omega) \in \mathcal{U} \\ m_{\text{max}} - k_b \omega & (v, \omega) \in \mathcal{C} \end{cases} \quad (2)$$

C. Sensory Feedback to Motor Controller

RHex, is equipped with a slowly growing suite of increasingly well characterized and integrated sensors including a primitive IMU (a bank of rate gyros and accelerometers), a leg strain based pose sensor [23], [9], and a 640 x 480 pixel standard frame rate CCD camera [24]. There are many promising and even intuitively compelling ways to imagine introducing these new sensory modalities into the motor control loop. But the physical and conceptual cost of perception so well articulated in the prior robotics literature [25] impels us to squeeze the greatest virtue we can from existing sensors before rushing to more extravagant schemes. In the specific context of RHex these new sensors threaten to reintroduce fragility to a mechanical platform assiduously refined for robustness. For example, our experimental leg strain sensory system [23] was not sufficiently robust at the time of writing to endure the harsh environmental conditions arising from the experimental paradigm to be described in Section IV, below. Hence, we resort in this paper to a surrogate measurement of foot touchdown. More generally, it seems incumbent upon experimentalists in robotics to establish a baseline of performance associated with careful use of simple sensor suites against which the incremental benefit of any specific new sensor can be compared. Thus, in the present paper, we restrict ourselves to the original RHex 1.0 hip shaft sensors [1], but we will use them in a more refined manner than previously, as this section details.

Even with this minimal sensing we are able successfully to achieve our feedback goals. As anticipated from above, three ideas based upon a great deal of empirical observation guide our approach to feedback control. First, one would like the legs to be synchronized within a tripod. Second, touchdown should occur simultaneously within a tripod. Third the legs should reduce their power output at the moment of touchdown.

The motivation for these three objectives seems most easily conveyed by considering the typical response of the prior task open loop controller in the face of an early physical leg transition from flight to stance resulting from its encountering a raised "obstacle" on the presumably flat terrain. Since touchdown has (unknown to the controller) occurred during the fast phase of the reference signal's cycle, the rapidly increasing PD errors inject energy into the system thereby pushing on the obstacle. In the most common instance where one side of the robot touches down before the other (most often due to an obstacle, inducing a high and low side of the robot) the early pushing is exactly the opposite of what is desired to keep the robot stable, as pushing on the high side causes additional rolling. Since RHex has only one actuated degree of freedom per leg, achieving energy efficient "touchdowns" that slow toe velocities at impact to avoid the leg bouncing off the ground is difficult. Thus, detecting touchdown and reducing the current to the motors at those instances would also be beneficial. These observations combine to motivate our desire to allow the robot freedom to adjust independently the trajectories of each of its legs depending on its current state.

Next, there is a run time question of how to determine specific interconnection strengths as a function of particular operating conditions. While allowing each leg the freedom to react to its environment is crucial, stable walking/running is tied to

the robots ability to synchronize each tripod and in general have these tripods be 180 degrees out of phase. In some sense these goals are contradictory, as adjusting each leg will by definition relax the rigid tripod configuration. In this paper we parameterize the control to allow for varying degrees of decentralization (allowing each tripod and then each leg within the tripod to individually react to its environment) while guaranteeing that at steady state steady state within a uniformly flat environment the tripods are synchronized and in lock-step.

1) *The Surrogate Touchdown Sensor and Derived Measurements:* The experiments reported below rely upon a surrogate for each leg's touchdown and liftoff events inferred from the heuristic detection of sudden increases in its hip actuator's tracking error as originally described in [26]. We denote the angle at which this sensor reports touchdown for the i^{th} leg by $q_{i,td}$ and the angle at which that leg lifts off the ground by $q_{i,to}$. For the k^{th} stance event of a given leg, we find it further expedient to introduce a state-dependent partition of its configuration space, into a "flight" phase, $\mathcal{F}_i(k) := (q_{i,to}(k), q_{i,td}(k))$, and its complement in \mathbb{T}^1 , "stance", $\mathcal{S}_i(k) := [q_{i,td}(k), q_{i,to}(k+1)]$. We will usually suppress the stance index number, k when using these symbols. We can then define the angle beyond which a leg has passed its touchdown position as,

$$d_{i,k}(q_i) = \begin{cases} 0 & q_{i,td}(k) \in \mathcal{F}_i(k) \\ q_i - q_{i,td} & q_{i,td}(k) \in \mathcal{S}_i(k) \end{cases} \quad (3)$$

so that, $d_k(q) := (d_{1,k}(q_1), \dots, d_{6,k}(q_6))$ effectively integrates the difference between each leg's touchdown angle and its current position during its stance phase, and is then reset to zero after liftoff for each leg. The above computation constitutes the only additional sensory information that this new controller uses relative to the scheme reported in our previous work [1], [2], [7].

2) *Tripod Swing and Touchdown Synchronization:* For the experiments reported in this paper, we will be coordinating left, $q_L := (q_i)_{i \in \mathcal{O}}$, $\mathcal{O} = \{1, 3, 5\}$ and right, $q_R := (q_i)_{i \in \mathcal{E}}$, $\mathcal{E} = \{2, 4, 6\}$ leg tripods (see figure 2 right), whose generic instance will be denoted by the variable $q \in \mathbb{T}^3$. Similarly, we will denote by $d_k(q)$, the application of the k^{th} touchdown difference function to each of the tripod's hip angles, assuming that each individual hip within a tripod advances to its next touchdown, $q_j \in \mathcal{S}_j(k+1)$ only after the other two are in the prior flight or subsequent stance $q_i \in \mathcal{S}_i(k) \cup \mathcal{F}_i(k+1)$ as well, for $i \neq j \in \mathcal{O}$ and $i \neq j \in \mathcal{E}$. Loosely following Klavins [13], we will encode desired tripod phase relationships by recourse to a scalar valued function, $\tilde{\rho} : \mathbb{T}^3 \rightarrow \mathbb{R}$,

$$\tilde{\rho}(q) := \sum_{i=1}^3 \rho(q_i); \quad \rho(u) = 1 - \cos(u) \quad (4)$$

which vanishes exactly when the three angles are at zero. Composing this with pairwise differences,

$$\mu(q) = \tilde{\rho}(Cq_L) + \tilde{\rho}(Cq_R); \quad C = \begin{bmatrix} 1 & -1 & 0 \\ 1 & 0 & -1 \\ 0 & -1 & 1 \end{bmatrix} \quad (5)$$

yields a function that vanishes exactly when all three angles of both tripods agree, encoding the synchronization of a tripod's

legs. Composing that, in turn, with the the touchdown offset angles,

$$\phi_k(q) := \mu \circ d_k(q) \quad (6)$$

yields a function that vanishes exactly when all three hips of each tripod touch down simultaneously and maintain an identical future difference to their touchdown configurations. Taking the sum of these last two compositions,

$$k(q) := \mu(q) + \phi_k(q), \quad (7)$$

roughly encodes both tasks, even though they cannot simultaneously be brought to zero on a non-flat surface with the robot's body normal aligned to that of the ground.

In our experience, much energy is wasted during the leg liftoff and touchdown events. Reducing the power to the legs at touchdown has the effect of reducing the amount of energy wasted from their “bouncing” off the ground as well as avoiding doing work against gravity in the retraction phase. At liftoff reducing the power reduces energy wasted due to trajectory mismatch with the physical system. By applying the following saturation function, σ , at touchdown and takeoff we can reduce the maximum voltage commanded to the motors from σ_m to σ_0 at the desired times in the leg cycle. Defining a touchdown sensitive saturation function to be

$$\sigma(u, \chi) = \begin{cases} \sigma_0 \chi + \sigma_m (1 - \chi) & u > 1 \\ -\sigma_0 \chi + -\sigma_m (1 - \chi) & u < -1 \\ u & |u| \leq 1 \end{cases} \quad (8)$$

where $\chi \in \{0, 1\}$ and $\chi = \chi_f^s \vee \chi_s^f$ where χ_f^s and $\chi_s^f \in \{0, 1\}$ and

$$\chi_f^s = \begin{cases} 1 & q_i \in [q_{i,td}, q_{i,td} + q_{R_1}] \\ 0 & q_i \notin [q_{i,td}, q_{i,td} + q_{R_1}] \end{cases} \quad (9)$$

and

$$\chi_s^f = \begin{cases} 1 & q_i \in [q_{i,to}, q_{i,to} + q_{R_2}] \\ 0 & q_i \notin [q_{i,to}, q_{i,to} + q_{R_2}] \end{cases} \quad (10)$$

where $q_{R_1}, q_{R_2} \in \mathbb{S}^1$ represent ranges around touchdown and liftoff respectively we are able to reduce the voltage passed to each motor at the appropriate times.

3) *Closed Loop Hip Tracking Controller:* Our hip controller takes the form of a “nonlinear PD” (i.e. a *Potential-Dissipative* [27]) tracker — that dissipates error potentials using a saturated velocity error term based upon (8) in a manner we now describe. The potential terms whose dissipation encodes the desired behavior arise from summing the tripod synchronization potential (7) in combination with a gait reference tracking error potential to be defined in (12). The “tracking errors” arise from a comparison of each tripod’s physical hip location with the appropriate component of the coordinated clock signals, $[r_1, r_2]^T \in \mathcal{R}$, whose form will be detailed in Subsection II.D. These clock signals are distributed appropriately to the left and right tripods by the “fanned out” embedding of \mathbb{T}^2 into \mathbb{T}^6 given by

$$\tilde{r} = [r_1 \ r_2 \ r_1 \ r_2 \ r_1 \ r_2]^T \quad (11)$$

and yield the obvious tracking error, $e := \tilde{r} - q$, between the reference and physical hip angles. A saturating tracking error potential,

$$(e) = \sum_{i=1}^6 \frac{\kappa_{\beta_1} e_i^2}{1 + \kappa_{\beta_2} e_i^2} \quad (12)$$

insures that the gradients used in the tracking controller will have a bounded magnitude that can be adjusted by a simple set of gains. Adding together the position and error regulating gradients with a saturating derivative term, the hip controller takes the form,

$$q = -\kappa_d \sigma(\dot{e}) - D_q(q) - D_e(e) \quad (13)$$

where gains $\kappa_{sym}, \kappa_{td}, \kappa_{\beta_1}, \kappa_{\beta_2}, \kappa_d$ and σ_0 vary the relative strength of each component of the motor control equation. Note the above equation for the motor voltage controller assumes the validity of the idealized motor model (2), assumes that the gains and saturation bounds of the constituent terms in (13) guarantee operation in the unsaturated regime, \mathcal{U} in (2), and then simply inverts the function *Mot*

It should be noted that while the components of the feedback function were chosen via the developers’ intuition, the form of the ultimate control system — the actuator inputs (13), and reference generator (14) and error integrator (15) schemes to be defined below — have been chosen to guarantee stability of the system, absent interaction with the environment, i.e., for $L_i = 0, i = 1 \dots 6$. Explicitly, when the saturated damping (first term on the right hand side) of (13) is applied to \dot{q} alone, the reader may verify that, $\|\dot{q}\|^2 + \|\dot{r} - R(r)\|^2 + k(q) + (e) + \rho(r_2 - r_1)$ is a Lyapunov function for the coupled dynamical system (13-15) when $L_i \equiv 0$. At the time of this writing, we had found that the form of (13) presented above (i.e., applying the saturated damping to the error velocity, \dot{e}) yields superior empirical results, and we are still experimenting with the best form of the controls and corresponding Lyapunov functions, so no further theoretical discussion seems yet appropriate.

D. Generating a reference trajectory

The alternating tripod is a “virtual bipedal” gait that treats the front and rear ipsilateral and middle contralateral legs as a virtual limb [20] — one on either side of the body, as anticipated by the hip index partition, \mathcal{E} and \mathcal{O} , in Section II.C.2. Thus, it is natural to build the gait generator on a copy of the 2-torus, $\mathcal{R} \approx \mathbb{T}^2$. We adapt the reference dynamical system proposed by Klavins [14], [13] to the physical coupling channels afforded by (13). Specifically, we build the decoupled clock dynamics, R , on a model space, \mathcal{C} , following the prescription of that earlier work, in a manner detailed in Section II-D.1, below. The physical reference generator now arises through a feedback coupling to the mechanical system (13),

$$\dot{r} = -R(r) + \kappa_{fb} \xi(q, \dot{q}, \sigma, e) \quad (14)$$

via a change of coordinates to the physical reference space, \mathcal{R} , construed as an appropriately deformed variant of the model space, $\mathcal{R} = h(\mathcal{C})$. The change of coordinates, $h : \mathcal{C} \approx \mathcal{R}$, is defined in Section (II-D.2), below. To achieve proper tracking by the mechanical system, we require the auxiliary integral error dynamics

$$\dot{\xi} = -D_r \rho(r_2 - r_1) - D_e(e) - \kappa_d R(r) - u_0 \xi \quad (15)$$

as is generally the case when coupling first order (internal clock) and second order (physical mechanism) dynamics. Note that this integrator is sensitive to both i) the tracking error, e , as well as ii) the internal tripod coordination error, $\rho(r_2 - r_1)$.

1) *Construction of the Model Gait Pattern Generator:* We now describe the dynamical system that generates the decoupled reference gait dynamics, $R(r)$, adapted from the work of Klavins [10,11]. As stated above, we interpret that construction as representing the gait pattern, generated in a model clock space, denoted $\mathcal{C} \approx \mathbb{T}^2$, where the goals of coordination can be intuitively conceived and specified. We relate the state of the model pattern, the clock signal $c \in \mathcal{C}$, to the specific physical variant produced by the reference gait generator, $r \in \mathcal{R}$, by a parametrized family of coordinate transformations, $r = h(c)$, so that the decoupled vector field, R in (14) is implemented² as a suitably transformed version, $R = D_c h \cdot R \circ h^{-1}$, of the model dynamical pattern generator,

$$R(c) = -\omega_c \begin{pmatrix} 1 \\ 1 \end{pmatrix} - \kappa_{cd} D_c \rho(c_2 - c_1). \quad (16)$$

In Figure 3 we plot $r : \mathbb{S}^1 \rightarrow \mathcal{C}$, the attracting limit cycle of the model decoupled decoupled model pattern generator, R (16), in model clock coordinates, \mathcal{C} , (left hand plot) and of a typical variant, $v = h \circ v : \mathbb{S}^1 \rightarrow \mathcal{R}$, in the physical reference gait coordinates, \mathcal{R} (right hand plot). Whereas a plot of the time trajectory of a component of this cycle, say $v_1(t)$, in the model coordinates, \mathcal{C} defines a graph described by a simple straight line, the graph of its deformed image, $v_1(t) \in \mathcal{R}$, a component of the steady state reference signal used to force the hip actuator system as in (13) is plotted in Figure 2. Notice as well in Figure 3 the lightly drawn lines defining triangulations of both \mathcal{C} on the left and \mathcal{R} on the right. These depict the specific change of coordinates, h , relating the model gait generator, R and its variant R , as we now explain.

2) *Deformation of the Model Gait Pattern Generator into the Physical Gait Variant Reference Generator:* In principle, any finitely parameterized family of homeomorphisms could be used to represent $h : \mathcal{C} \rightarrow \mathcal{R}$, but unfortunately few computationally effective (i.e. finitely parametrized) instances are available. With most parameterized function families, such as polynomials, radial basis functions, neural networks, etc., it is difficult just to determine whether a given parameterization yields a function that is invertible over its range, let alone whether it is a homeomorphism between the domain and codomain. We choose to use piecewise linear homeomorphisms (PLH) to represent h . The PL functions are, to the best of the authors' knowledge, the most flexible finitely parameterized class of functions that can be verified to be one-to-one and onto [28]. Moreover, a PL function can be inverted in closed form and the domain and range may be determined directly from the parameterization.

A PLH can be parameterized by a triplet (P, Q, T) , where P is the set of domain vertices, Q is the set of corresponding codomain vertices, and T is a triangulation of P , represented as a list of sets, each set representing a k -simplex of the triangula-

²As will be discussed below, our parametrization is continuous but not smooth, hence the formal derivatives required to transform the model vector field, \bar{R} defined in (16) entail systematic discontinuities (at the boundaries of each triangular cell). In practice, for the physical implementation reported in Section IV, we introduce smoothing terms when passing the model field, \bar{R} through the transformation (16) to compute the physical gait reference vector field in (14).

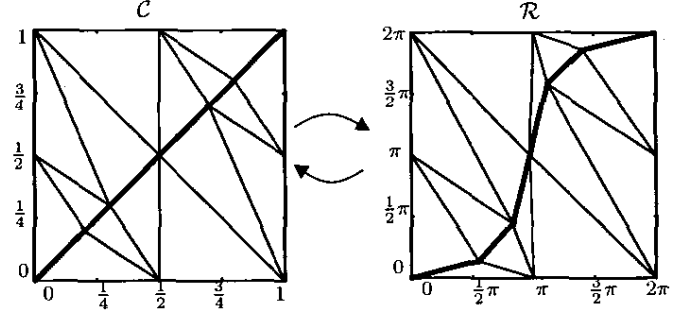


Fig. 3. An example of $h : \mathcal{C} \rightarrow \mathcal{R}$ for a tripod gait. The model gait pattern, \bar{v} physical reference gait variant v , are indicated by thicker lines. Note: For convenience we have chosen to implement and depict in these figures $\bar{h} = l \circ h \circ l^{-1}$, where, $l(\theta_1, \theta_2) = (\theta_1, \theta_2 + \pi)$ translates the phase of the second tripod to match that of the first. In this example, the freely tunable vertices of h were chosen to lie on the gaits, the cycle $v = h \circ \bar{v}$, as discussed in Section III.

tion and containing $k + 1$ indices of vertices of P . An example of a PLH is provided in Fig. 3.³

III. MOVING IN PARAMETER SPACE

By design, the gait generator presented above offers parametric freedom to choose any operating point within the "sensory distribution" plane defined by the feedforward-feedback and centralized-decentralized axis, as well as within the independent "gait variant" parameter space. In general, for each different terrain condition, these parameters must be tuned differently in order to realize good behavior from a particular gait. For reasons detailed in [7] we have chosen to perform this tuning by recourse to empirically driven simplex descent in the parameter space of the transformation family, h .

We have already shown [7] how Nelder-Mead [31], a derivative-free simplex based direct descent method, can provide extremely effective tuning at the centralized feedforward operating point of the sensory distribution plane. In this paper, we once again choose this approach because experimental variability makes the approximation of gradients problematic. Nevertheless, gait variant tuning on $\mathcal{R} = \mathbb{T}^6$ remains a difficult task, because the high dimensionality of the gait variant space we find empirically to be required for good performance. It is worth repeating, as a matter of conceptual clarification for the reader, that our chosen parametrization of this gait variant space, introduced in the previous section, takes the form of the vertices of a PLH, h , as depicted in Figure 3. More parameters to be tuned means more data needed to tune them, and since experiments are expensive with respect to robot and operator time, we have used biological insight and our working experience to reduce the dimensionality of the tuning problem by "slaving" some of the gait variant parameters to others, as will now be described.

Rather than using a completely free choice of the PLH parameters in h , the domain vertices can be placed on the model

³The reader should note that our implementation methods for PLH construction and representation are limited to the 2-torus, based upon the constructions of Aronov-Seidel [29]. This is consonant with our present focus on virtual bipedal gaits, but in the long run, it will be important to develop simple constructive methods for defining and checking computationally effective PLH constructions on tori of general dimension. For more on PLH representations and computation, see [28], [30].

gait and the space triangulated such that edges of the triangulation lie entirely along the model gait. In this case, the generated gait will be given explicitly by the range vertices corresponding to the domain vertices on the model gait. Figure 3 shows an example of this. Placing the vertices in this way confers two benefits. First, the number of parameters in h is held to a bare minimum to represent a particular gait. Second, since the gait is made apparent, this representation offers a handle for applying operator intuition in the selection of initial parameter sets. In fact in the virtual biped case, if the gait and the model gait are specified, the computation introduced in [29] can be applied directly to generate a piecewise linear homeomorphism that maps the model gait into the gait.

IV. EXPERIMENTAL RESULTS

In this section we discuss the preliminary results of implementing this coordination control system on RHex. We conduct two sets of tests. The first addresses RHex's energy efficiency over both a linoleum floor and a rough bed of bricks. The second set of experiments assesses the relative benefits of coordination when traversing a modified version of the brick bed as the terrain is made progressively more "extreme".

A. Robot efficiency

As a convenient scalar valued surrogate for endurance we use specific resistance,

$$f_e = P_{av}/mgv_{av} \quad (17)$$

where P_{av} is the average power⁴ m is the mass of the robot, g is acceleration of gravity, and v_{av} is average velocity. We run our tuning algorithm in conjunction with our coordination system to find "good" parameter settings for each terrain. The specific resistance of the resultant gait is then compared to the previous best open-loop gait.

1) *Linoleum*: To compare specific resistance on linoleum to the carefully tuned open-loop system [7] we run the Nelder-Mead based optimization on the larger parametrization suggested in this paper. A descent consists of several hundred experiments over an 8m linoleum course. Each experiment involves two such runs where the cost function is then averaged. The parameters being tuned include the knot points defining the trajectory in Figure 2, and the gains associated with the control equations. As can be seen in table 1 after running a number of descents the final specific resistance was 0.72 this represents a 15% improvement over the open-loop gait.

2) *Rough terrain*: To compare the results over rougher terrain we construct a 4m long brick strewn bed for the robot to traverse. The brick bed is approximately 2m wide and contains 600 bricks each 15cmx10cmx5cm as depicted in figure 4. Once again we run our optimization algorithm to find a "good" parameter set. As can be seen in above table the results are quite impressive. Over rough terrain the coordination works to reduce pitching and rolling in the robot and results in a 53% decrease in specific resistance.

⁴In some of the literature only mechanical power is included in this calculation. Other authors report the total power (which includes power for the on-board computation and inefficiencies in the electronics), as we do here.

TABLE I

COMPARISON OF OPEN LOOP CONTROL TO COORDINATION SYSTEM FOR SPECIFIC RESISTANCE OVER DIFFERENT TERRAINS.

Terrain	Open Loop	With Coordination
Linoleum	0.87	0.73
Bricks	4.7	2.2

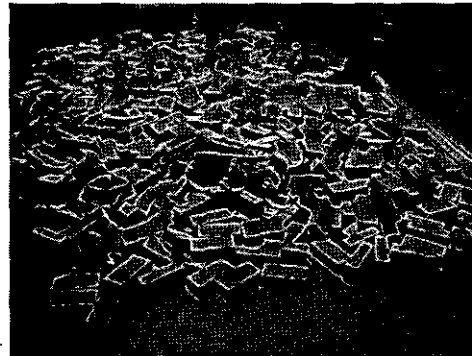


Fig. 4. Rough brick terrain test bed.

B. Traversing extreme terrain

To test the system's ability to adapt to even more difficult terrain we increase the variance and height of the brick experimental bed (naming the original brick bed "easy"). For these tests we are interested in creating environments where the open loop gait often fails to traverse the 3m course successfully. We define a failure as either the robot flipping over or going outside the 2m width of the course (note: the extreme course was only 1.5m in width) despite the efforts of a human driver to steer it straight⁵. To eliminate experimenter's bias the algorithm used is chosen at random. Experiments are conducted on four levels of difficulty with each incrementally adding additional bricks to the testing bed. As can be seen the coordination system bests the open-loop controller over each of the brick courses. In fact, over the most difficult of the terrains the coordination controller afforded an improvement by nearly a factor of three in likelihood of successful traversal, while running at well over 2 bodylengths/sec (typically, on average, at about 1.2 m/s).

V. CONCLUSION

We have presented a legged gait coordination control system providing the freedom to select independently gait pattern, gait variant, degree of centralization, and influence of sensory feedback. We present preliminary experimental evidence on our hexapod RHex to suggest that each of these degrees of control freedom may play a critical role in extending the efficacy of the robot's locomotion capabilities. We report improvements of up to a factor of two in energy efficiency over regular and rough terrain. We report dramatic increases in the robot's success in traversing difficult terrain. Indeed, over the most extreme terrain we have explored to date, where the original gait controller

⁵Steering our robot involves changing the gait parameters on one side of the robot as compared to the other. Human steering inputs were introduced at the motor control level, hidden from the coordination system

TABLE II

COMPARISON OF COORDINATION SYSTEM TO OPEN-LOOP CONTROLLER
OVER TERRAINS WITH VARYING DIFFICULTY

Terrain	Open Loop	With Coordination
linoleum	10/10	10/10
Bricks (easy)	28/30	15/17
Bricks (medium)	11/30	19/30
Bricks (hard)	6/30	16/30
Bricks (extreme)	1/10	4/10

succeeds in traversal at most 20% of the time, these preliminary versions of the new controller achieve a 50% success rate. Near future improvements to the system we describe here will introduce more extensive sensory information, more sophisticated actuator control as well as more systematic exploration of the benefits of the various coordination components — gait variant, degree of feedback influence, and centralization of control. Longer term plans include the introduction of discrete changes in operating point as a function of learned terrain.

ACKNOWLEDGMENTS

This work could not have been done without the design and development work on RHex by Uluc Saranli, the help with coding from Haldun Komsuoglu, and the prior work of Eric Klavins. We thank Satinder Baveja for a number of useful discussions bearing on gait parameter tuning. The work was supported in part by DARPA/ONR Grant N00014-98-0747 and in part by DARPA/SPAWAR Contract N66001-03-C-8045..

REFERENCES

- [1] U. Saranli, M. Buehler, and D.E. Koditschek, "Rhex: A simple and highly mobile hexapod robot," *The International Journal of Robotics Research*, vol. 20, no. 7, pp. 616–631, 2001.
- [2] M. Buehler, U. Saranli, and D.E. Koditschek, "Single actuator per leg robotic hexapod," McGill University, 2002, US Patent 6,481,513 B2.
- [3] D.L. Jindrich and R.J. Full, "Dynamic stabilization of rapid hexapedal locomotion," *J Exp Biol*, vol. 205, pp. 2803–23, 2002.
- [4] A H Cohen, P J Holmes, and RH Rand, "The nature of the coupling between segmental oscillators of the lamprey spinal generator for locomotion: a mathematical model," *J Math Biol*, pp. 345–69, 1982.
- [5] S Grillner, "Neurobiological bases of rhythmic motor acts in vertebrates," *Science*, pp. 143–49, 1985.
- [6] H Cruse, "What mechanisms coordinate leg movement in walking arthropods," *Trends in Neuroscience*, pp. 15–21, 1990.
- [7] Joel D. Weingarten, Gabriel A. D. Lopes, Martin Buehler, Richard E. Groff, and Daniel E Koditschek, "Automated gait adaptation for legged robots," in *Int. Conf. Robotics and Automation*, New Orleans, USA, 2004, IEEE.
- [8] R. Altendorfer, D. E. Koditschek, and P.Holmes, "Stability analysis of a clock-driven rigid-body slip model for rhex," *The International Journal of Robotics Research*, vol. 20, no. 7, pp. 616–631, 2004.
- [9] P-C Lin, H. Komsuoglu, and D.E. Koditschek, "A leg configuration measurement system for full body pose estimates in a hexapod robot," *IEEE Transactions on Robotics*, 2004, submitted.
- [10] A. A. Rizzi and D. E. Koditschek, "An active visual estimator for dexterous manipulation," *IEEE Transactions on Robotics and Automation*, vol. 12, no. 5, pp. 697–713, 1996.
- [11] M. Buehler, D. E. Koditschek, and P. J. Kindlmann, "A family of robot control strategies for intermittent dynamical environments," *IEEE Control Systems Magazine*, vol. 10, no. 2, pp. 16–22, 1990.
- [12] M. Buehler, D. E. Koditschek, and P. J. Kindlmann, "Planning and control of robotic juggling and catching tasks," *IEEE Int. J. Robotics Research*, vol. 13, no. 2, pp. 101–118, 1994.
- [13] Eric Klavins and Daniel E. Koditschek, "Phase regulation of decentralized cyclic robotic systems," *International Journal of Robotics and Automation*, vol. 21, no. 3, pp. 257–275, 2002.
- [14] Eric Klavins, *Decentralized Phase Regulation of Cyclic Robotic Systems*, Ph.D. thesis, University of Michigan, 2002.
- [15] H. Wolf, "The locust tegula: significance for flight rhythm generation, wing movement control and aerodynamic force production," *J. Exp. Biol.*, pp. 229–253, 1993.
- [16] H Wolf and A Buschges, "Plasticity of synaptic connections in sensory-motor pathways of the adult locust flight system," *J. Exp. Biol.*, pp. 1276–1284, 1997.
- [17] L Guan, T Kiemel, and A H Cohen, "Impact of movement and movement-related feedback on the lamprey central pattern generator for locomotion," *J Exp Biol*, pp. 2361–70, 2001.
- [18] J Schmitz et al., "A biologically inspired controller for hexapod walking: Simple solutions by exploiting physical properties," *Biol Bull*, pp. 195–200, 2001.
- [19] Noah J. Cowan, Emily J. Ma, Mark Cutkosky, and Robert J. Full, "A biologically inspired passive antenna for steering control of a running robot," in *International Symposium on Robotics Research*, Siena, Italy, October 2003.
- [20] D. M. Wilson, "Insect walking," *Annu Rev Entomol.*, no. 11, pp. 103–22, 1966.
- [21] M. Golubitsky et al., "Symmetry in locomotor central pattern generators and animal gaits," *Nature*, pp. 693–5, 1999.
- [22] Auke Jan Ijspeert, Jun Nakanishi, and Stefan Schaal, "Learning rhythmic movements by demonstration using nonlinear oscillators," in *Intl. Conference on Intelligent Robots and Systems*, Lausanne, Switzerland, October 2002, IEEE, vol. 1, pp. 958–963.
- [23] P-C. Lin, H. Komsuoglu, and D. E. Koditschek, "A leg configuration sensory system for dynamical body state estimates in a hexapod robot," in *Proceedings of International Conference on Robotics and Automation*, Taipei, Taiwan, September 2003.
- [24] Gabriel A. D. Lopes and Daniel E. Koditschek, "Visual registration and navigation using planar features," in *International Conference in Robotics and Automation*, Taipei, Taiwan, 2003, IEEE.
- [25] Matthew T. Mason, "Kicking the sensor habit," *AI Magazine*, vol. 14, no. 1, pp. 58–59, 1993.
- [26] H. Komsuoglu, D. McMordie, U. Saranli, N. Moore, M. Buehler, and D. E. Koditschek, "Proprioception based behavioral advances in a hexapod robot," in *Proceedings of International Conference on Robotics and Automation*.
- [27] Daniel E. Koditschek, "The control of natural motion in mechanical systems," *ASME Journal of Dynamic Systems, Measurement, and Control*, vol. 113, no. 4, pp. 547–551, Dec 1991.
- [28] Richard E. Groff, Pramod P. Khargonekar, and Daniel E. Koditschek, "A local convergence proof for the minvar algorithm for computing continuous piecewise linear approximations," *SIAM Journal on Numerical Analysis*, vol. 41, no. 3, pp. 983–1007, 2003.
- [29] Aronov, Seidel, and Souvaine, "On compatible triangulations of simple polygons," *CGTA: Computational Geometry: Theory and Applications*, vol. 3, 1993.
- [30] Richard E. Groff, *Piecewise Linear Homeomorphisms for the Approximation of Invertible Maps*, Ph.D. thesis, University of Michigan, 2003.
- [31] J. A. Nelder and R. Mead, "A simplex method for function minimization," *Computer Journal*, vol. 7, pp. 308–313, 1965.