



University of Pennsylvania
ScholarlyCommons

Technical Reports (CIS)

Department of Computer & Information Science

7-7-2017

Automated Bug Removal for Software-Defined Networks

Yang Wu

University of Pennsylvania

Andreas Haeberlen

University of Pennsylvania

Wenchao Zhou

Georgetown University

Boon T. Loo

University of Pennsylvania, boonloo@cis.upenn.edu

Ang Chen

University of Pennsylvania

Follow this and additional works at: https://repository.upenn.edu/cis_reports

 Part of the [Computer Engineering Commons](#), and the [Computer Sciences Commons](#)

Recommended Citation (OVERRIDE)

Tech Report #: MS-CIS-17-02, Department of Computer and Information Science, University of Pennsylvania

MS-CIS-17-02

This paper is posted at ScholarlyCommons. https://repository.upenn.edu/cis_reports/1017
For more information, please contact repository@pobox.upenn.edu.

Automated Bug Removal for Software-Defined Networks

Abstract

When debugging an SDN application, diagnosing the problem is merely the first step: the operator must still find a fix that solves the problem, without causing new problems elsewhere. However, most existing debuggers focus exclusively on diagnosis and offer the network operator little or no help with finding an effective fix. Finding a suitable fix is difficult because the number of candidates can be enormous. In this paper, we propose a step towards automated repair for SDN applications. Our approach consists of two elements. The first is a data structure that we call meta provenance, which can be used to efficiently find good candidate repairs. Meta provenance is inspired by the provenance concept from the database community; however, whereas standard provenance can only reason about changes to data, meta provenance can also reason about changes to programs. The second element is a system that can efficiently backtest a set of candidate repairs using historical data from the network. This is used to eliminate candidate repairs that do not work well, or that cause other problems. We have implemented a system that maintains meta provenance for SDNs, as well as a prototype debugger that uses the meta provenance to automatically suggest repairs. Results from several case studies show that, for problems of moderate complexity, our debugger can find high-quality repairs within one minute.

Disciplines

Computer Engineering | Computer Sciences

Comments

MS-CIS-17-02

Automated Bug Removal for Software-Defined Networks

Yang Wu*, Ang Chen*, Andreas Haeberlen*, Wenchao Zhou†, Boon Thau Loo*

*University of Pennsylvania, †Georgetown University

Abstract

When debugging an SDN application, diagnosing the problem is merely the first step: the operator must still find a fix that solves the problem, without causing new problems elsewhere. However, most existing debuggers focus exclusively on diagnosis and offer the network operator little or no help with finding an effective fix. Finding a suitable fix is difficult because the number of candidates can be enormous.

In this paper, we propose a step towards automated repair for SDN applications. Our approach consists of two elements. The first is a data structure that we call *meta provenance*, which can be used to efficiently find good candidate repairs. Meta provenance is inspired by the provenance concept from the database community; however, whereas standard provenance can only reason about changes to *data*, meta provenance can also reason about changes to *programs*. The second element is a system that can efficiently backtest a set of candidate repairs using historical data from the network. This is used to eliminate candidate repairs that do not work well, or that cause other problems.

We have implemented a system that maintains meta provenance for SDNs, as well as a prototype debugger that uses the meta provenance to automatically suggest repairs. Results from several case studies show that, for problems of moderate complexity, our debugger can find high-quality repairs within one minute.

1 Introduction

Debugging networks is notoriously hard. The advent of software-defined networking (SDN) has added a new dimension to the problem: networks can now be controlled by software programs, and, like all other programs, these programs can have bugs.

There is a substantial literature on network debugging and root cause analysis [16, 21, 23, 25, 36, 54, 60]. These tools can offer network operators a lot of help with debugging. For instance, systems like NetSight [21] and negative provenance [54] provide a kind of “backtrace” to capture historical executions, analogous to a stack trace in a conventional debugger, that can link an observed effect of a bug (say, packets being dropped in the network) to its root causes (say, an incorrect flow entry).

However, in practice, diagnosing the problem is only the first step. Once the root cause of a problem is known,

the operator must find an effective fix that not only solves the problem at hand, but also avoids creating *new* problems elsewhere in the network. Given the complexity of modern controller programs and configuration files, finding a good fix can be as challenging as – or perhaps even more challenging than – diagnostics, and it often requires considerable expertise. However, current tools offer far less help with this second step than with the first.

In this paper, we present a step towards automated bug fixing in SDN applications. Ideally, we would like to provide a “Fix it!” button that automatically finds and fixes the root cause of an observed problem. However, removing the human operator from the loop entirely seems risky, since an automated tool cannot know the operator’s intent. Therefore we opt for a slightly less ambitious goal, which is to provide the operator with a list of suggested repairs.

Our approach is to leverage and enhance some concepts that have been developed in the database community. For some time, this community has been studying the question how to explain the presence or absence of certain data tuples in the result of a database query, and whether and how the query can be adjusted to make certain tuples appear or disappear [9, 50]. By seeing SDN programs as “queries” that operate on a “database” of incoming packets and produce a “result” of delivered or dropped packets, it should be possible to ask similar queries – e.g., why a given packet was absent (misrouted/dropped) from an observed “result”.

The key concept in this line of work is that of *data provenance* [6]. In essence, provenance tracks causality: the provenance of a tuple (or packet, or data item) consists of the tuples from which it was directly derived. By applying this idea recursively, it is possible to trace the provenance of a tuple in the output of a query all the way to the “base tuples” in the underlying databases. The result is a comprehensive causal explanation of how the tuple came to exist. This idea has previously been adapted for the SDN setting as *network provenance*, and it has been used, e.g., in debuggers and forensic tools such as ExSPAN [62], SNP [60] and Y! [54]. However, *so far this work has considered provenance only in terms of packets and configuration data – the SDN controller program was assumed to be immutable*. This is sufficient for diagnosis, but not for repair: we must also be able to infer which parts of the controller program were respon-

sible for an observed event, and how the event might be affected by changes to that program.

In this paper, we take the next step and extend network provenance to *both* programs *and* data. At a high level, we accomplish this with a combination of two ideas. First, we treat programs as just another kind of data; this allows us to reason about the provenance of data not only in terms of the data it was computed from, but also in terms of the parts of the program it was computed *with*. Second, we use counterfactual reasoning to enable a form of negative provenance [54], so that operators can ask why some condition did *not* hold (Example: “Why didn’t any DNS requests arrive at the DNS server?”). This is a natural way to phrase a diagnostic query, and the resulting meta provenance is, in essence, a tree of changes (to the program and/or to configuration data) that could make the condition true.

Our approach presents three key challenges. First, there are infinitely many possible repairs to a given program (including, e.g., a complete rewrite), and not all of them will make the condition hold. To address this challenge, we show how to find suitable repairs efficiently using properties of the provenance itself. Second, even if we consider only suitable changes, there are still infinitely many possibilities. We leverage the fact that most bugs affect only a small part of the program, and that programmers tend to make certain errors more often than others [27, 41]. This allows us to rank the possible changes according to plausibility, and to explore only the most plausible ones. Finally, even a small change that fixes the problem at hand might still cause problems elsewhere in the network. To avoid such fixes, we backtest them using historical information that was collected in the network. In combination, this approach enables us to produce a list of suggested repairs that 1) are small and plausible, 2) fix the problem at hand, and 3) are unlikely to affect unrelated parts of the network.

We present a concrete algorithm that can generate meta provenance for arbitrary controller programs, as well as a prototype system that can collect the necessary data in SDNs and suggest repairs. We have applied our approach to three different controller languages, and we report results from several case studies; our results show that our system can generate high-quality repairs for realistic bugs, typically in less than one minute.

2 Overview

We illustrate the problem with a simple scenario (Figure 1). A network operator manages an SDN that connects two web servers and a DNS server to the Internet. To balance the load, incoming web requests are forwarded to different servers based on their source IP. At some point, the operator notices that web server H2 is not receiving any requests from the Internet.

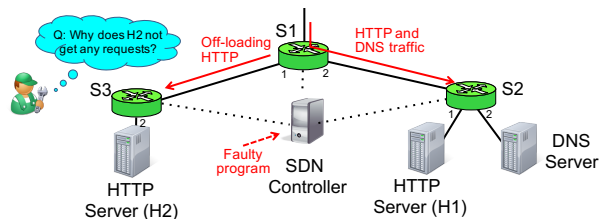


Figure 1: Example scenario. The primary web server (H1) is too busy, so the network offloads some traffic to a backup server (H2). The offloaded requests are never received because of a bug in the controller program.

Our goal is to build a debugger that accepts a simple specification of the observed problem (such as “H2 is not receiving any traffic on TCP port 80”) and returns a) a detailed causal explanation of the problem, and b) a ranked list of suggested fixes. We consider a suggested fix to be useful if it a) fixes the specified problem and b) has few or no side-effects on the rest of the network.

2.1 Background: Network Datalog

Since our approach involves tracking causal dependencies, we will explain it using a declarative language, specifically *network datalog* (NDlog) [34], which makes these dependencies obvious. However, these dependencies are fundamental, and they exist in all the other languages that are used to program SDNs. To demonstrate this, we have applied our approach to three different languages, of which only one is declarative; for details, please see Section 5.8.

In NDlog, the state of a node (switch, controller, or server) is modeled as a set of *tables*, each of which contains a number of *tuples* (e.g., configuration state or network events). For instance, an SDN switch might contain a table called `FlowTable`, where each tuple represents a flow entry. Tuples can be manually inserted or programmatically derived from other tuples; the former are called *base tuples* and the latter *derived tuples*.

NDlog programs consist of *rules* that describe how tuples should be derived from each other. For example, the rule $A(@X, P) :- B(@X, Q), Q=2 * P$ says that a tuple $A(@X, P)$ should be derived on node X whenever a) there is also a tuple $B(@X, Q)$ on that node, and b) $Q=2 * P$. The $@$ symbol specifies the node on which the tuple resides, and the $:-$ symbol is the derivation operator. Rules may include tuples from different nodes; for instance, $C(@X, P) :- C(@Y, P)$ says that tuples in table C on node Y should be sent to node X .

2.2 Classical provenance

In NDlog, it is easy to see why a given tuple exists: if the tuple was derived using some rule r (e.g., $A(@X, 5)$), then it must be the case that all the predicates in r were

```

r1 FlowTable(@Swi,Hdr,Prt) :- PacketIn(@C,Swi,Hdr), WebLoadBalancer(@C,Hdr,Prt), Swi == 1.
r2 FlowTable(@Swi,Hdr,Prt) :- PacketIn(@C,Swi,Hdr), Swi == 1, Hdr == 53, Prt := 2.
r3 FlowTable(@Swi,Hdr,Prt) :- PacketIn(@C,Swi,Hdr), Swi == 1, Hdr != 53, Prt := -1.
r4 FlowTable(@Swi,Hdr,Prt) :- PacketIn(@C,Swi,Hdr), Swi == 1, Hdr != 80, Prt := -1.
r5 FlowTable(@Swi,Hdr,Prt) :- PacketIn(@C,Swi,Hdr), Swi == 2, Hdr == 80, Prt := 1.
r6 FlowTable(@Swi,Hdr,Prt) :- PacketIn(@C,Swi,Hdr), Swi == 2, Hdr == 53, Prt := 2.
r7 FlowTable(@Swi,Hdr,Prt) :- PacketIn(@C,Swi,Hdr), Swi == 2, Hdr == 80, Prt := 2.

```

Figure 2: Part of an SDN controller program written in NDlog: Switch S1 load-balances HTTP requests across S2 and S3 (rule `r1`), forwards DNS requests to S3 (rule `r2`); and drops all other traffic (rules `r3`–`r4`). S2 and S3 forward the traffic to the correct server based on the destination port (rules `r5`–`r7`). The bug from Section 2.3 is underlined.

true (e.g., $B(@X, 10)$), and all the constraints in r were satisfied (e.g., $10=2*5$). This concept can be applied recursively (e.g., to explain the existence of $B(@X, 10)$) until a set of base tuples is reached that cannot be explained further (e.g., configuration data or packets at border routers). The result is as a *provenance tree*, in which each vertex represents a tuple and edges represent direct causality; the root tuple is the one that is being explained, and the base tuples are the leaves. Using negative provenance [54], we can also explain why a tuple *does not* exist, by reasoning counterfactually about how the tuple *could* have been derived.

2.3 Case study: Faulty program

We now return to the scenario in Figure 1. One possible reason for this situation is that the operator has made a copy-and-paste error when writing the program. Figure 2 shows part of the (buggy) controller program: when the operator added the second web server H2, she had to update the rules for switch S3 to forward HTTP requests to H2. Perhaps she saw that rule `r5`, which is used for sending HTTP requests from S2 to H1, seemed to do something similar, so she copied it to another rule `r7` and changed the forwarding port, but forgot to change the condition `Swi==2` to check for S3 instead of S2.

When the operator notices that no requests are arriving at H2, she can use a provenance-based debugger to get a causal explanation. Provenance trees are more useful than large packet traces or the system-wide configuration files because they only contain information that is causally related to the observed problem. But the operator is still largely on her own when interpreting the provenance information and fixing the bug.

2.4 Meta provenance

Classical provenance is inherently unable to generate fixes because it reasons about the provenance of data that was generated *by a given program*. To find a fix, we also need the ability to reason about program changes.

We propose to add this capability, in essence, *by treating the program as just another kind of data*. Thus, the provenance of a tuple that was derived via a certain rule r does not only consist of the tuples that triggered r , but

also of the syntactic components of r itself. For instance, when generating the provenance that explains why, in the scenario from Figure 1, no HTTP requests are arriving at H2, we eventually reach a point where we must explain the absence of a flow table entry in switch S3 that would send HTTP packets to port #2 on that switch. At this point, we can observe that rule `r7` would *almost* have generated such a flow entry, were it not for the predicate `Swi==2`, which did not hold. We can then, analogous to negative provenance, use counterfactual reasoning to determine that the rule *would* have the desired behavior if the constant were 3 instead of 2. Thus, the fact that the constant in the predicate is 2 and not 3 should become part of the missing flow entry’s meta provenance.

2.5 Challenges

An obvious challenge with this approach is that there are infinitely many possible changes to a given program: constants, predicates, and entire rules can be changed, added, or deleted. However, in practice, only a tiny subset of these changes is actually relevant. Observe that, at any point in the provenance tree, we know exactly what we need to explain – e.g., the absence of a particular flow entry for HTTP traffic. Thus, we need not consider changes to the destination port in the header (`Hdr`) in `r7` (because that predicate is already true) or to unrelated rules that do not generate flow entries.

Of course, the number of relevant changes, and thus the size of any meta provenance graph, is still infinite. This does mean that we can never fully draw or materialize it – but there is also no need for that. Studies have shown that “real” bugs are often small [41], such as off-by-one errors or missing predicates. Thus, it seems useful to define a cost metric for changes (perhaps based on the number of syntactic elements they touch), and to explore only the “cheapest” changes.

Third, it is not always obvious what to change in order to achieve a desired effect. For instance, when changing `Swi==2` in the above example, why did we change the constant to 3 and not, say, 4? Fortunately, we can use existing tools, such as SMT solvers, that can enumerate possibilities quickly for the more difficult cases.

Finally, even if a change fixes the problem at hand, we cannot be sure that it will not cause new problems

```

program ← rule | rule program
rule ← id func ":" func " sels "," assigns "."
id ← (0-9a-zA-Z)+
funcs ← func | func func
func ← table "(" location "," arg "," arg ")"
table ← (a-zA-Z)+
assigns ← assign | assign assigns
assign ← arg ":@" expr
sels ← sel "," sel
sel ← expr opr expr
opr ← == | < | > | !=
expr ← integer | arg

```

Figure 3: μ Dlog grammar

elsewhere. Such side-effects are difficult to capture in the meta provenance itself, but we show that they can be estimated in another way, namely by backtesting changes with historical information from the network.

3 Meta Provenance

In this section, we show how to derive a simple meta provenance graph for both positive and negative events. We begin with a basic provenance graph for declarative programs, and then extend it to obtain meta provenance.

For ease of exposition, we explain our approach using a toy language, which we call μ Dlog. In essence, μ Dlog is a heavily simplified variant of NDlog: all tables have exactly two columns; all rules have one or two predicates and exactly two selection predicates, all selection predicates must use one of four operators ($<$, $>$, $!=$, $==$), and there are no data types other than integers. The grammar of this simple language is shown in Figure 3. The controller program from our running example (in Figure 2) happens to already be a valid μ Dlog program.

3.1 The basic provenance graph

Recall from Section 2.2 that provenance can be represented as a DAG in which the vertices are events and the edges indicate direct causal relationships. Since NDlog’s declarative syntax directly encodes dependencies, we can define relatively simple provenance graphs for it. For convenience, we adopt a graph from our prior work [54], which contains the following *positive* vertices:

- $\text{EXIST}([t_1, t_2], N, \tau)$: Tuple τ existed on node N from time t_1 to t_2 ;
- $\text{INSERT}(t, N, \tau)$, $\text{DELETE}(t, N, \tau)$: Base tuple τ was inserted (deleted) on node N at time t ;
- $\text{DERIVE}(t, N, \tau)$, $\text{UNDERIVE}(t, N, \tau)$: Derived tuple τ acquired (lost) support on N at time t ;
- $\text{APPEAR}(t, N, \tau)$, $\text{DISAPPEAR}(t, N, \tau)$: Tuple τ appeared (disappeared) on node N at time t ; and
- $\text{SEND}(t, N \rightarrow N', \pm\tau)$, $\text{RECEIVE}(t, N \leftarrow N', \pm\tau)$: $\pm\tau$ was sent (received) by node N to/from N' at t .

Conceptually, the system builds the provenance graph incrementally at runtime: whenever a new base tuple is

inserted, the system adds an INSERT vertex, and whenever a rule is triggered and generates a new derived tuple, the system adds a DERIVE vertex. The APPEAR and EXIST vertexes are generated whenever a tuple is added to the database (after an insertion or derivation), and the interval in the EXIST vertex is updated once the tuple is deleted again. The rules for DELETE, UNDERIVE, and DISAPPEAR are analogous. The SEND and RECEIVE vertexes are used when a rule on one node has a tuple τ on another node as a precondition; in this case, the system sends a message from the latter to the former whenever τ appears ($+\tau$) or disappears ($-\tau$), and the two vertexes are generated when this message is sent and received, respectively. Notice that – at least conceptually – vertexes are never deleted; thus, the operator can inspect the provenance of past events.

The system inserts an edge (v_1, v_2) between two vertexes v_1 and v_2 whenever the event represented by v_1 is a direct cause of the event represented by v_2 . Derivations are caused by the appearance (if local) or reception (if remote) of the tuple that satisfies the last precondition of the corresponding rule, as well as by the existence of any other tuples that appear in preconditions; appearances are caused by derivations or insertions, message transmissions by appearances, and message arrivals by message transmissions. The rules for underivations and disappearances are analogous. Base tuple insertions are external events that have no cause within the system.

So far, we have described only the vertexes for positive provenance. The full graph also supports *negative* events [54] by introducing a negative “twin” for each vertex. For instance, the counterpart to APPEAR is NAPPEAR, which represents the fact that a certain tuple *failed* to appear. For a more detailed discussion of negative provenance, please see [54].

3.2 The meta provenance graph

The above provenance graph can only represent causality between data. We now extend the graph to track provenance of programs by introducing two elements: *meta tuples*, which represent the syntactic elements of the program itself (such as conditions and predicates) and *meta rules*, which describe the operational semantics of the language. For clarity, we describe the meta model for μ Dlog here; our meta model for the full NDlog language is more complex but follows the same approach.

Meta tuples: We distinguish between two kinds of meta tuples: program-based tuples and runtime-based tuples. Program-based tuples are the syntactic elements that are visible to the programmer: rule heads (HeadFunc), predicates (PredFunc), assignments (Assign), constants (Const), and operators (Oper). Runtime-based tuples describe data structures inside the NDlog runtime: base tuple insertions (Base), tuples (Tuple), sat-

```

h1 Tuple(@C,Tab,Val1,Val2) :- Base(@C,Tab,Val1,Val2).
h2 Tuple(@L,Tab,Val1,Val2) :- HeadFunc(@C,Rul,Tab,Loc,Arg1,Arg2), HeadVal(@C,Rul,JID,Loc,L), Val == True,
  HeadVal(@C,Rul,JID1,Arg1,Val1), HeadVal(@C,Rul,JID2,Arg2,Val2), Sel(@C,Rul,JID,SID,Val), Val' == True,
  Sel(@C,Rul,JID,SID',Val'), True == f_match(JID1,JID2), True == f_match(JID2,JID), SID != SID'.
p1 TuplePred(@C,Rul,Tab,Arg1,Arg2,Val1,Val2) :- Tuple(@C,Tab,Val1,Val2), PredFunc(@C,Rul,Tab,Arg1,Arg2).
p2 PredFuncCount(@C,Rul,Count<N>) :- PredFunc(@C,Rul,Tab,Arg1,Arg2).
j1 Join4(@C,Rul,JID,Arg1,Arg2,Arg3,Arg4,Val1,Val2,Val3,Val4) :- TuplePred(@C,Rul,Tab,Arg1,Arg2,Val1,Val2),
  TuplePred(@C,Rul,Tab',Arg3,Arg4,Val3,Val4), PredFuncCount(@C,Rul,N), N==2, Tab != Tab', JID := f_unique().
j2 Join2(@C,Rul,JID,Arg1,Arg2,Val1,Val2) :- TuplePred(@C,Rul,Tab,Arg1,Arg2,Val1,Val2), PredFuncCount(@C,Rul,N),
  N == 1, JID := f_unique().
e1 Expr(@C,Rul,JID,ID,Val) :- Const(@C,Rul,ID,Val), JID := *.
e2 Expr(@C,Rul,JID,Arg1,Val1) :- Join2(@C,Rul,JID,Arg1,Arg2,Val1,Val2).
e3-e7 // analogous to e2 for Arg2/Val2 (Join2) and Arg1..4/Val1..4 (Join4)
a1 HeadVal(@C,Rul,JID,Arg,Val) :- Assign(@C,Rul,Arg,ID), Expr(@C,Rul,JID,ID,Val).
s1 Sel(@C,Rul,JID,SID,Val) :- Oper(@C,Rul,SID,ID',ID'',Opr), Expr(@C,Rul,JID',ID',Val'),
  Expr(@C,Rul,JID'',ID'',Val''), True == f_match(JID',JID''), JID := f_join(JID',JID''),
  Val := (Val' Opr Val''), ID' != ID''.

```

Figure 4: Meta rules for μ Dlog.

ified predicates (`TuplePred`), evaluated expressions (`Expr`), joins (`Join`), selections (`Sel`) and values in rule heads (`HeadVal`). Although concrete implementations may maintain additional data structures (e.g., for optimizations), these tuples are sufficient to describe the operational semantics.

Meta rules: Figure 4 shows the full set of meta rules for μ Dlog. Notice that these rules are written in NDlog, not in μ Dlog itself. We briefly explain each meta rule below.

Tuples can exist for two reasons: they can be inserted as base tuples (`h1`) or derived via rules (`h2`). Recall that, in μ Dlog’s simplified syntax, each rule joins at most two tables and has exactly two selection predicates to select tuples from these tables. A rule “fires” and produces a tuple $T(a, b)$ iff there is an assignment of values to a , and b that satisfies both predicates. (Notice that the two selection predicates are distinguished by a unique selection ID, or SID.) We will return to this rule again shortly.

The next four meta rules compute the actual joins. First, whenever a (syntactic) tuple appears as in a rule definition, each concrete tuple that exists at runtime generates one variable assignment for that tuple (`p1`). For instance, if a rule r contains `Foo(A, B)`, where A and B are variables, and at runtime there is a concrete tuple `Foo(5, 7)`, meta rule `p1` would generate a `TuplePred(@C, r, Foo, A, B, 5, 7)` meta tuple to indicate that 5 and 7 are assignments for A and B .

Depending on the number of tuples in the rule body (calculated in rule `p2`), meta rule `j1` or `j2` will be triggered: When it contains two tuples from different tables, meta rule `j1` computes a `Join4` tuple for each pair of tuples from these tables. Note that this is a full cross-product, from which another meta rule (`s1`) will then select the tuples that match the selection predicates in the rule. For this purpose, each tuple in the join is given a unique join ID (JID), so that the values of the selection predicates can later be matched up with the correct tuples. If a rule contains only a tuple from one table, we compute a `Join2` tuple instead (`j2`).

The next seven meta rules evaluate expressions. Expressions can appear in two different places – in a rule head and in a selection predicate – but since the evaluation logic is the same, we use a single set of meta rules for both cases. Values can come from integer constants (`e1`) or from any element of a `Join2` or `Join4` meta tuple (`e2–e7`). Notice that most of these values are specific to the join on which they were evaluated, so each `Expr` tuple contains a specific JID; the only exception are the constants, which are valid for all joins. To capture this, we use a special JID wildcard (`*`), and we test for JID equality using a special function `f_match(JID1, JID2)` that returns true iff `JID1==JID2` or if either of them is `*`.

The last two meta rules handle assignments (`a1`) and selections (`s1`). An assignment simply sets a variable in a rule head to the value of an expression. The `s1` rule determines, for each selection predicate in a rule (identified by SID) and for each join state (identified by JID) whether the check succeeds or fails. Function `f_join(JID1, JID2)` is introduced to handle JID wildcard: it returns `JID1` if `JID2` is `*`, or `JID2` otherwise. The result is recorded in a `Sel` meta tuple, which is used in `h2` to decide whether a head tuple is derived.

μ Dlog requires only 13 meta tuples and 15 meta rules; the full meta model for NDlog contains 23 meta tuples and 23 meta rules. We omit the details here; they are included in Appendix B.

3.3 Meta provenance forests

So far, we have essentially transformed the original NDlog program into a new “meta program”. In principle, we could now generate meta provenance graphs by applying a normal provenance graph generation algorithm on the meta program – e.g., the one from [54]. However, this is not quite sufficient for our purposes. The reason is that there are cases where the same effect can be achieved in multiple ways. For instance, suppose that we are explaining the absence of an X tuple, and that there are two different rules, $r1$ and $r2$, that could derive X . If our goal

was to *explain why* X was absent, we would need to include explanations for both $r1$'s and $r2$'s failure to fire. However, our goal is instead to *make X appear*, which can be achieved by causing *either* $r1$ *or* $r2$ to fire. If we included both in the provenance tree, we would generate only repairs that cause both rules to fire, which is unnecessary and sometimes even impossible.

Our solution is to replace the meta provenance tree with a meta provenance *forest*. Whenever our algorithm encounters a situation with k possible choices that are each individually sufficient for repair, it replaces the current tree with k copies of itself and continues to explore only one choice in each tree.

3.4 From explanations to repairs

The above problem occurs in the context of disjunctions; next, we consider its “twin”, which occurs in the context of conjunctions. Sometimes, the meta provenance must explain why a rule with multiple preconditions did *not* derive a certain tuple. For diagnostic purposes, the absence of one missing precondition is already sufficient to explain the absence of the tuple. However, meta provenance is intended for repair, i.e., it must allow us to find a way to make the missing tuple appear. Thus, it is not enough to find a way to make a single precondition true, or even ways to make each precondition true individually. What we need is a way to satisfy *all* the preconditions *at the same time!*

For concreteness, consider the following simple example, which involves a meta rule $A(x, y) : \neg B(x), C(x, y), x+y>1, x>0$. Suppose that the operator would like to find out why there is no $A(x, y)$ with $y==2$. In this case, it would be sufficient to show that there is no $C(x, y)$ with $y==2$ and $x>0$; cross-predicate constraints, such as $x+y>1$, can be ignored. However, if we want to actually make a suitable $A(x, y)$ appear, we need to *jointly* consider the absence of both $B(x)$ and $C(x, y)$, and ensure that all branches of the provenance tree respect the cross-predicate constraints. In other words, we cannot explore the two branches separately; we must make sure that their contents “match”.

To accomplish this, our algorithm automatically generates a constraint pool for each tree. It encodes the attributes of tuples as variables, and it formulates constraints over these variables. For instance, given the missing tuple A_0 , we add two variables $A_0.x$ and $A_0.y$. To initialize the constraint pool, the root of the meta provenance graph must satisfy the operator’s requirement: $A_0.y == 2$. While expanding any missing tuple, the algorithm adds constraints as necessary for a successful derivation. In this example, three constraints are needed: first, the predicates must join together, i.e., $B_0.x == C_0.x$. Second, the predi-

cates must satisfy the constraints, i.e., $B_0.x>0$ and $C_0.x+C_0.y>1$. Third, the predicates must derive the head, i.e., $A_0.x==C_0.x$ and $A_0.y==C_0.y$. In addition, tuples must satisfy primary key constraints. For instance, suppose deriving $B(x)$ requires $D_0(9, 1)$ while deriving $C(x, y)$ requires $D_1(9, 2)$. If x is the only primary key of table $D(x, y)$, $D_0(9, 1)$ and $D_1(9, 2)$ cannot co-exist at the same time. Therefore, the explanation is inconsistent for generating repairs. To address such cases, we encode additional constraints: $D.x == D_0.x$ implies $D.y == 1$ and $D.x == D_1.x$ implies $D.y == 2$.

3.5 Generating meta provenance

In general, meta provenance forests may consist of infinitely many trees, each with infinitely many vertices. Thus, we cannot hope to materialize the entire forest. Instead, we adopt a variant of the approach from [54] and use a step-by-step procedure that constructs the trees incrementally. We define a function $QUERY(v)$ that, when called on a vertex v from any (partial) tree in the meta provenance forest, returns the immediate children of v and/or “forks” the tree as described above. By calling this function repeatedly on the leaves of the trees, we can explore the trees incrementally. The two key differences to [54] are the procedures for expanding $NAPPEAR$ and $NDERIVE$ vertices: the former must now “fork” the tree when there are multiple children that are each individually sufficient to make the missing tuple appear (Section 3.3), and the latter must now explore a join across *all* preconditions of a missing derivation, while collecting any relevant constraints (Section 3.4).

To explore an infinite forest with finite memory, our algorithm maintains a set of partial trees. Initially, this set contains a single “tree” that consists of just one vertex – the vertex that describes the symptom that the operator has observed. Then, in each step, the algorithm picks one of the partial trees, randomly picks a vertex within that tree that does not have any children yet, and then invokes $QUERY$ on this vertex to find the children, which are then added to that tree. As discussed before, this step can cause the tree to fork, adding multiple copies to the set that differ only in the newly added children. Another possible outcome is that the chosen partial tree is completed, which yields a repair candidate.

Each tree – completed or partial – is associated with a *cost*, which intuitively represents the implausibility of the repair that the tree represents. (Lower-cost trees are more plausible.) Initially, the cost is zero. Whenever a base tuple is added that represents a program change, we increase the total cost of the corresponding tree by the cost of that change. In each step, our algorithm picks the partial tree with the lowest cost; if there are multiple trees with the same cost, our algorithm picks the one

```

function GENERATEREPAIRCANDIDATES( $P$ )
   $R \leftarrow \emptyset$ ,  $\tau_r \leftarrow \text{ROOTTUPLE}(P)$ 
  if MISSINGTUPLE( $\tau_r$ ) then
     $C \leftarrow \text{CONSTRAINTPOOL}(P)$ 
     $A \leftarrow \text{SATASSIGNMENT}(C)$ 
    for ( $\tau_i \in \text{BASETUPLES}(P)$ )
      if MISSINGTUPLE( $\tau_i$ ) then
         $R \leftarrow R \cup \text{CHANGETUPLE}(\tau_i, A)$ 
    else if EXISTINGTUPLE( $\tau_r$ ) then
      for ( $T_i \in \text{BASETUPLECOMBINATIONS}(P)$ )
         $R_{ci} \leftarrow \emptyset$ ,  $R_{di} \leftarrow \emptyset$ 
         $C_i \leftarrow \text{SYMBOLICPROPAGATE}(P, T_i)$ 
         $A_i \leftarrow \text{UNSATASSIGNMENT}(C_i)$ 
        for ( $\tau_i \in T_i$ )
           $R_{ci} \leftarrow R_{ci} \cup \text{CHANGETUPLE}(\tau_i, A_i)$ 
           $R_{di} \leftarrow R_{di} \cup \text{DELETETUPLE}(\tau_i)$ 
         $R \leftarrow R \cup R_{ci} \cup R_{di}$ 
  RETURN  $R$ 

```

Figure 5: Algorithm for extracting repair candidates from the meta provenance graph. For a description of the helper functions, please see Appendix C.

with the smallest number of unexpanded vertexes. Repair candidates are output only once there are no trees with a lower cost. Thus, repair candidates are found in cost order, and the first one is optimal with respect to the chosen cost metric; if the algorithm runs long enough, it should eventually find a working repair. (For a more detailed discussion, please see Appendix D.) In practice, the algorithm would be run until some reasonable cut-off cost is reached, or until the operator’s patience runs out.

The question remains how to assign costs to program changes. We assign a low cost to common errors (such as changing a constant by one or changing a `==` to a `!=`) and a high cost to unlikely errors (such as writing an entirely new rule, or defining a new table). Thus, we can prioritize the search of fixes to software bugs that are more commonly observed in actual programming, and thus increase the chances that a working fix will be found.

3.6 Limitations

The above approach is likely to find simple problems, such as incorrect constraints or copy-and-paste errors, but it is not likely to discover fundamental flaws in the program logic that require repairs in many different places and/or several new rules. However, software engineering studies have consistently shown that simple errors, such as copy-and-paste bugs, are very common: simple typos already account for 9.4-9.8% of all semantic bugs [32], and 70–90% of bugs can be fixed by changing only existing syntactic elements [41]. Because of this, we believe that an approach that can automatically fix “low-cost” bugs can still be useful in practice.

Our approach focuses exclusively on incorrect computations; there are classes of bugs, such as concurrency bugs or performance bugs, that it cannot repair. We speculate that such bugs can be found with a richer meta model, but this is beyond the scope of the present paper.

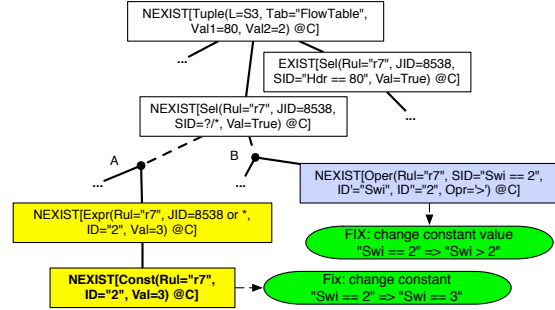


Figure 6: Meta provenance of a missing flow entry. It consists of two trees (white + yellow, white + blue), each of which can generate a repair candidate.

4 Generating repair candidates

As discussed in Section 3.5, our algorithm explores the meta provenance forest in cost order, adding vertexes one by one by invoking `QUERY` on a leaf of an existing partial tree. Thus, the algorithm slowly generates more and more trees; at the same time, some existing trees can be eventually completed because none of their leaves can be further expanded (i.e., `QUERY` returns \emptyset on them). Once a tree is completed, we invoke the algorithm in Figure 5 to extract a candidate repair.

The algorithm has two cases: one for trees that have an existing tuple at the root (e.g., a packet that reached a host it should not have reached), and one for trees that have a missing tuple at the root (e.g., a packet failed to reach its destination). We discuss each in turn. Furthermore, we note that the ensuing analysis is performed on the *meta* program, which is independent from the language that the *original* program is written in.

4.1 Handling negative symptoms

If the root of the tree is a missing tuple, its leaves will contain either missing tuples or missing meta tuples, which can be then created by inserting the corresponding tuples or program elements. However, some of these tuples may still contain variables – for instance, the tree might indicate that an $A(x)$ tuple is missing, but without a concrete value for x . Hence, the algorithm first looks for a satisfying assignment of the tree’s constraint pool (Section 3.4). If such an assignment is found, it will supply concrete values for all remaining variables; if not, the tree cannot produce a working repair and is discarded.

As an example, Figure 6 shows part of the meta provenance of a missing event. It contains two meta provenance trees, which have some vertices in common (colored white), but do not share other vertices (colored yellow and blue). The constraint pool includes `Const0.Val = 3`, `Const0.Rul = r7`, and `Const0.ID = 2`. That is, the repair requires the exist-

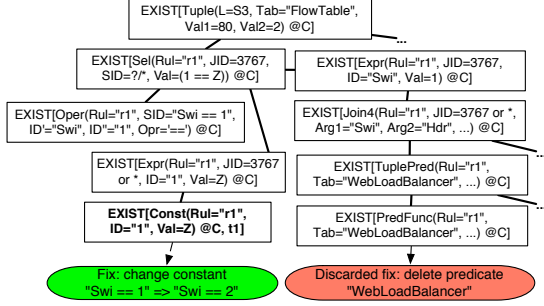


Figure 7: Meta provenance of a harmful flow entry. All repairs (e.g., green and red) can prevent this derivation, but the red one rederives the tuple via other meta rules.

tence of a constant of value 3 in rule $r7$. Therefore, we can change value of the original constant (identified by identical primary keys Rul and ID) to 3.

4.2 Handling positive symptoms

Meta provenance can also help with debugging scenarios with positive symptoms. Figure 7 shows the meta provenance graph of a tuple that exists, but should not exist. We can make this tuple disappear by deleting (or changing in the proper way) any of the base tuples or meta tuples on which the derivation is based.

However, neither base tuples nor meta tuples are always safe to change. In the case of meta tuples, we must ensure that the change does not violate the syntax of the underlying language (in this case, μ Dlog). For instance, it would be safe to delete a `PredFunc` tuple to remove an entire predicate, but it may not be safe to delete a `Const` meta tuple, since this might result in an incomplete expression, such as `Swi >`.

In the case of changes to base tuples, the problem is to find changes that a) will make the current derivation disappear, and that b) will *not* cause an alternate derivation of the same tuple via different meta rules. To handle the first problem, we do not directly replace elements of a tuple with a different value. Rather, we initially replace the elements with symbolic constants and then re-execute the derivation of meta rules symbolically while collecting constraints over the symbolic constants that must hold for the derivation to happen. Finally, we can negate these constraints and use a constraint solver to find a satisfying assignment for the negation. If successful, this will yield concrete values we can substitute for the symbolic constant that will make the derivation disappear.

For concreteness, we consider the green repair in Figure 7. We initially replace `Const('r1', 1, 1)` with `Const('r1', 1, Z)` and then reexecute the derivation to collect constraints – in this case, `1==Z`. Since `Z=2` does not satisfy the constraints, we can make the tuple at

the top disappear by changing `Z` to 2 (which corresponds to changing `Swi==1` to `Swi==2` in the program).

This leaves the second problem from above: even if we make a change that disables one particular derivation of an undesired tuple, that very change could enable some other derivation that causes the undesired tuple to reappear. For instance, suppose we delete the tuple `PredFunc('r1', 'WebLoadBalancer', ...)`, which corresponds to deleting the `WebLoadBalancer` predicate from the μ Dlog rule $r1$ (shaded red in Figure 7). This deletion will cause the `Join4` tuple to disappear, and it will change the value of `PredFuncCount` from 2 to 1. As a result, the derivation through meta rule $j1$ will duly disappear; however, this will instead trigger meta rule $j2$, which leads to another derivation of the same flow entry.

Solving this for arbitrary programs is equivalent to solving the halting problem, which is NP-hard. However, we do not need a perfect solution because this case is rare, and because we can either use heuristics to track certain rederivations or we can easily eliminate the corresponding repair candidates during backtesting.

4.3 Backtesting a single repair candidate

Although the generated repairs will (usually) solve the problem immediately at hand, by making the desired tuple appear or the undesired tuple disappear, each repair can also have a broader effect on the network as a whole. For instance, if the problem is that a switch forwarded a packet to the wrong host, one possible “repair” is to disable the rule that generates flow entries for that switch. However, this would also prevent *all other* packets from being forwarded, which is probably too restrictive.

To mitigate this, we adopt the maxim of “primum non nocere” [20] and assess the global impact of a repair candidate before suggesting it. Specifically, we backtest the repair candidates in simulation, using historical information from the network. We can approximate past control-plane states from the diagnostic information we already record for the provenance; to generate a plausible workload, we can use a Netflow trace or a sample of packets. We then collect some key statistics, such as the number of packets delivered to each host. Since the problems we are aiming to repair are typically subtle (total network failures are comparatively easy to diagnose!), they should affect only a small fraction of the traffic. Hence, a “good” candidate repair should have little or no impact on metrics that are not related to the specified problem.

In essence, the metrics play the role of the test suite that is commonly used in the wider literature on automated program fixing. While the simple metric from above should serve as a good starting point, operators could easily add metrics of their own, e.g., to encode

<code>r7(v1) FlowTable(@Swi,Hdr,Prt) :- PacketIn(@C,Swi,Hdr), Swi == 3, Hdr == 80, Prt := 2.</code>
<code>r7(v2) FlowTable(@Swi,Hdr,Prt) :- PacketIn(@C,Swi,Hdr), Swi > 2, Hdr == 80, Prt := 2.</code>
<code>r7(v3) FlowTable(@Swi,Hdr,Prt) :- PacketIn(@C,Swi,Hdr), Swi != 2, Hdr == 80, Prt := 2.</code>

(a)

<code>r6(v1,v2,v3) FlowTable(@Swi,Hdr,Prt) :- PacketIn(@C,Swi,Hdr), Swi == 2, Hdr == 53, Prt := 2.</code>
<code>r7(v1,v2,v3) FlowTable(@Swi,Hdr,Prt) :- PacketIn(@C,Swi,Hdr), Swi == 3, Hdr == 80, Prt := 2.</code>
<code>r7(v2,v3) FlowTable(@Swi,Hdr,Prt) :- PacketIn(@C,Swi,Hdr), Swi > 3, Hdr == 80, Prt := 2.</code>
<code>r7(v3) FlowTable(@Swi,Hdr,Prt) :- PacketIn(@C,Swi,Hdr), Swi < 2, Hdr == 80, Prt := 2.</code>

(b)

Figure 8: (a) Three repair candidates, all of which can generate forwarding flow entries for switch S2 by fixing `r7` in the original program in Figure 2; other parts of the program are unchanged. (b) Backtesting program that evaluates all three repair candidates simultaneously while running shared computations only once.

performance goals (load balancing, link utilization) or security restrictions (traffic from X should never reach Y). However, recall that, in contrast to much of the earlier work on program fixing, we do *not* rely on this “test suite” to *find* candidate repairs (we use the meta provenance for that); the metrics simply serve as a sanity check to weed out repairs with serious side effects. The fact that a given repair passed the backtesting stage is not a guarantee that no side effects will occur.

As an additional benefit, the metrics can be used to rank the repairs, and to give preference to the candidates that have the smallest impact on the overall network.

4.4 Backtesting multiple repair candidates

It is important for the backtesting to be fast: the less time it takes, the more candidate repairs we can afford to consider. Fortunately, we can leverage another concept from the database literature to speed up this process considerably. Recall that each backtest simulates the behavior of the network with the repaired program. Thus, we are effectively running many very similar “queries” (the repaired programs, which differ only in the fixes that were applied) over the same “database” (the historical network data), where we expect significant overlaps among the query computations. This is a classical instance of *multi-query optimization*, for which powerful solutions are available in the literature [19, 35].

Multi-query optimization exploits the fact that almost all computation is shared by almost all repair candidates, and thus has to be performed only once. We accomplish this by transforming the original program into a *backtesting program* as follows. First, we associate each tuple with a set of tags, we extend all relations to have a new field for storing the tags, and we update all the rules such that the tag of the head is the intersection of the tags in the body. Then, for each repair candidate, we create a new tag and add copies of all the rules the repair candidate modifies, but we restrict them to this particular tag. Finally, we add rules that evaluate the metrics from Section 4.3, separately for each tag.

The effect is that data flows through the program as usual, but, at each point where a repair candidate has modified something, the flow forks off a subflow that has the tag of that particular candidate. Thus, the later in the program the modification occurs, the fewer computations have to be duplicated for that candidate. Overall, the backtesting program correctly computes the metrics for each candidate, but runs considerably faster than computing each of the metrics round after round.

As an example, Figure 8(a) shows three repair candidates (`v1`, `v2`, and `v3`) for the buggy program in Figure 2. Each of them alters the rule `r7` in a different way: `v1` changes a constant, `v2` and `v3` change an operator. (Other rules are unchanged.)

In some cases, it is possible to determine, through static analysis, that rules with different tags produce overlapping output. For instance, in the above example, the three repairs all modify the same predicate, and some of the predicates are implied by others; thus, the output for switch 3 is the same for all three tags, and the output for switches above 3 is the same for tags `v2` and `v3`. By coalescing the corresponding rules, we can further reduce the computation cost. Finding *all* opportunities for coalescing would be difficult, but recall that this is merely an optimization: even if we find none at all, the program will still be correct, albeit somewhat slower.

5 Evaluation

In this section, we report results from our experimental evaluation, which aim to answer five high-level questions: 1) Can meta provenance generate reasonable repair candidates? 2) What is the runtime overhead of meta provenance? 3) How fast can we process diagnostic queries? 4) Does meta provenance scale well with the network size? And 5) how well does meta provenance work across different SDN frameworks?

5.1 Prototype implementation

We have built a prototype based on declarative and imperative SDN environments as well as Mininet [29]. It

generates and further backtests repair candidates, such that the operator can inspect the suggested repairs and decide whether and which to apply. Our prototype consists of around 30,000 lines of code, including the following three main components.

Controllers: We validate meta provenance using three types of SDN environments. The first is a declarative controller based on RapidNet [44]; it includes a proxy that interposes between the RapidNet engine and the Mininet network and that translates NDlog tuples into OpenFlow messages and vice versa. The other two are existing environments: the Trema framework [51] and the Pyretic language [37]. (Notice that neither of the latter two is declarative: Trema is based on Ruby, an imperative language, and Pyretic is an imperative domain-specific language that is embedded in Python.)

At runtime, the controller and the network each record relevant control-plane messages and packets to a log, which can be used to answer diagnostic queries later. The information we require from runtime is not substantially different from existing provenance systems [10, 33, 54, 62], which have shown that provenance can be captured at scale and for SDNs.

Tuple generators: For each of the above languages, we have built a meta tuple generator that automatically generates meta tuples from the controller program and from the log. The program-based meta tuples (e.g., constants, operators, edges) only need to be generated once for each program; the log-based meta tuples (e.g., messages, constraints, expressions) are generated by replaying the logged control-plane messages through automatically-instrumented controller programs.

Tree constructor: This component constructs meta provenance trees from the meta tuples upon a query. As we discussed in Section 3.4, this requires checking the consistency of repair candidates. Our constructor has an interface to the Z3 solver [11] for this purpose. However, since many of the constraint sets we generate are trivial, we have built our own “mini-solver” that can quickly solve the trivial instances on its own; the nontrivial ones are handed over to Z3. The mini-solver also serves as an optimizer for handling cross-table meta tuple joins. Using a naïve nested loop join that considers all combinations of different meta tuples would be inefficient; instead, we solve simple constraints (e.g., equivalence, ranges) first. This allows us to filter the meta tuples before joining them, and use more efficient join paradigms, such as hash joins. Our cost metric is based on a study of common bug fix patterns (Pan et al. [41]).

5.2 Experimental setup

To obtain a representative experimental environment, we set up the Stanford campus network from ATPG [57]

in Mininet [29], with 16 Operational Zone and backbone routers. Moreover, we augmented the topology with edge networks, each of which is connected to the main network by at least one core router; we also set up 1 to 15 end hosts per edge network. The core network is proactively configured using forwarding entries from the Stanford campus network; the edge networks run a mix of reactive and proactive applications. In Appendix A, we include an experiment where the controller reactively installs core routing policies. Overall, our smallest topology across all scenarios consisted of 19 routers and 259 hosts, and our largest topology consisted of 169 routers and 549 hosts. In addition, we created realistic background traffic using two traffic traces obtained in a similar campus network setting [5]; 1 to 16 of the end hosts replayed the traces continuously during the course of our experiments. Moreover, we generated a mix of ICMP `ping` traffic and HTTP web traffic on the remaining hosts. Overall, 4.6–309.4 million packets were sent through the network. We ran our experiments on a Dell OptiPlex 9020 workstation, which has a 8-core 3.40 GHz Intel i7-4770 CPU with 16 GB of RAM and a 128 GB OCZ Vector SSD. The OS was Ubuntu 13.10, and the kernel version was 3.8.0.

5.3 Usability: Diagnosing SDNs

A natural first question to ask is whether meta provenance can repair real problems. To avoid distorting our results by picking our own toy problems to debug, we have chosen four diagnostic scenarios from four different networking papers that have appeared at CoNEXT [13, 57], NSDI [7], and HotSDN [4], plus one common class of bugs from an OSDI paper [31]. We focused on scenarios where the root cause of the problem was a bug in the controller program. We recreated each scenario in the lab, based on its published description. The five scenarios were:

- **Q1: Copy-and-paste error [31].** A server received no requests because the operator made a copy-and-paste error when modifying the controller program. The scenario is analogous to the one in Figure 1, but with larger topology and more realistic traffic.
- **Q2: Forwarding error [57].** A server could not receive queries from certain clients because the operator made an error when specifying the action of the forwarding rule.
- **Q3: Uncoordinated policy update [13].** A firewall controller app configured white-list rules for web servers. A load-balancing controller app updated the policy on an ingress point, without coordinating with the firewall app; this caused some traffic to shift, and then to be blocked by the firewall.

	Query description	Result
Q1	H20 is not receiving HTTP requests from H2	9/2
Q2	H17 is not receiving DNS queries from H1	12/3
Q3	H20 is not receiving HTTP requests from H1	11/3
Q4	First HTTP packet from H2 to H20 is not received	13/3
Q5	H2's MAC address is not learned by the controller	9/3

Table 1: The diagnostic queries, the number of repair candidates generated by meta provenance, and the number of remaining candidates after backtesting.

- **Q4: Forgotten packets [7].** A controller app correctly installed flow entries in response to new flows; however, it forgot to instruct the switches to forward the first incoming packet in each flow.
- **Q5: Incorrect MAC learning [4].** A MAC learning app should have matched packets based on their source IP, incoming port, and destination IP; however, the program only matched on the latter two fields. As a result, some switches never learned about the existence of certain hosts.

To get a sense of how useful meta provenance would be for repairing the problems, we ran diagnostic queries in our five scenarios as shown in Table 1, and examined the generated candidate repairs. In each of the scenarios, we bounded the cost and asked the repair generator to produce all repair candidates. Table 2 shows the repair candidates returned for Q1; the others are included in Appendix E.

Our backtesting confirmed that each of the proposed candidates was effective, in the sense that it caused the backup web server to receive at least some HTTP traffic. This phase also weeded out the candidates that caused problems for the rest of the network. To quantify the side effects, we replayed historical packets in the original network and in each repaired network. We then computed the traffic distribution at end hosts for each of these networks. We used the Two-Sample Kolmogorov-Smirnov test with significance level 0.05 to compare the distributions before and after each repair. A repair candidate was rejected if it significantly distorted the original traffic distribution; the statistics and the decisions are shown in Table 2. For instance, repair candidate G deleted `Swi==2` and `Dpt==53` in rule `r6`. This causes the controller to generate a flow entry that forwards HTTP requests at S3; however, the modified `r6` *also* causes HTTP requests to be forwarded to the DNS server.

After backtesting, the remaining candidates are presented to the operator in complexity order, i.e., the simplest candidate is shown first. In this example, the second candidate on the list (B) is also the one that most human operators would intuitively have chosen – it fixes the copy-and-paste bug by changing the switch ID in the faulty predicate from `Swi==2` to `Swi==3`.

Table 1 summarizes the quality of repairs our prototype generated for all scenarios for the RapidNet con-

	Repair candidate (Accepted?)	KS-test
A	Manually installing a flow entry (✓)	0.00007
B	Changing <code>Swi==2</code> in <code>r7</code> to <code>Swi==3</code> (✓)	0.00007
C	Changing <code>Swi==2</code> in <code>r7</code> to <code>Swi!=2</code> (X)	0.00865
D	Changing <code>Swi==2</code> in <code>r7</code> to <code>Swi>=2</code> (X)	0.00826
E	Changing <code>Swi==2</code> in <code>r7</code> to <code>Swi>2</code> (X)	0.00826
F	Deleting <code>Swi==2</code> in <code>r7</code> (X)	0.00867
G	Deleting <code>Swi==2</code> and <code>Dpt==53</code> in <code>r6</code> (X)	0.05287
H	Deleting <code>Swi==2</code> and <code>Dpt==80</code> in <code>r7</code> (X)	0.00999
I	Changing <code>Swi==2</code> and <code>Act=output-1</code> in <code>r5</code> to <code>Swi==3</code> and <code>Act=output-2</code> (X)	0.05286

Table 2: Candidate repairs generated by meta provenance for Q1, which are then filtered by a KS-test.

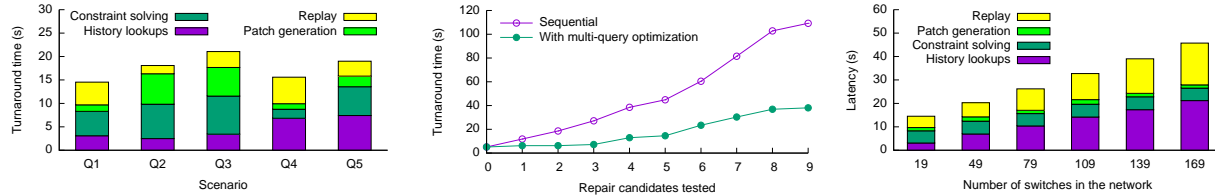
troller. Each scenario resulted in two or three repair suggestions. In the first stage, meta provenance produced between 9 and 13 repair candidates for each query, for a total of 54 repair candidates. Note that these numbers do not count expensive repair candidates that were discarded by the ranking heuristic (Section 3.5). The backtesting stage then confirmed that 48 of these candidates were effective, i.e., they fixed the problem at hand (e.g., the repair caused the server to receive at least a few packets). However, 34 of the effective candidates caused non-trivial side effects, and thus were discarded.

We note that the final set of candidates included a few non-intuitive repairs – for instance, one candidate fixed the problem in Q1 by manually installing a new flow entry. However, these repairs were nevertheless effective and had few side effects, so they should suffice as an initial fix. If desired, a human operator could always refactor the program later on.

5.4 Runtime overhead

Latency and throughput: To measure the latency and throughput overhead incurred by maintaining meta provenance, we used a standard approach of stress-testing OpenFlow controllers [14] which involves streaming incoming packets through the Trema controller using `Cbench`. Latency is defined as the time taken to process each packet within the controller. We observe that provenance maintenance resulted in a latency increase of 4.2% to 54ms, and a throughput reduction of 9.8% to 45,423 packets per second.

Disk storage: To evaluate the storage overhead, we streamed the two traffic traces obtained from [5] through our SDN scenario in Q1. For each packet in the trace, we recorded a 120-byte log entry that contains the packet header and the timestamp. The logging rates for the two traces are 20.2 MB/s and 11.4 MB/s per switch, respectively, which are only a fraction of the sequential write rate of commodity SSDs. Note that this data need not be kept forever: most diagnostic queries are about problems that currently exist or have appeared recently. Thus, it should be sufficient to store the most recent entries, perhaps an hour’s worth.



(a) Time to generate the repairs for each of the scenarios in Section 5.3. (b) Time needed to *jointly* backtest the first k repair candidates from Q1. (c) Scalability of repair generation phase with network size for Q1.

Figure 9: Repair generation speed for all queries; backtesting speed and scalability result for Q1.

5.5 Time to generate repairs

Diagnostic queries does not always demand a real-time response; however, operators would presumably prefer a quick turnaround. Figure 9a shows the turnaround time for constructing the meta provenance data structure and for generating repair candidates, including a breakdown by category. In general, scenarios with more complex control-plane state (Q1, Q4, and Q5) required more time to query the time index and to look up historical data; the latter can involve loop-joining multiple meta tables, particularly for the more complicated meta rules with over ten predicates. Other scenarios (Q2 and Q3) forked larger meta-provenance forests and thus spent more time on generating repairs and on solving constraints. However, we observe that, even when run on a single machine, the entire process took less than 25 seconds in all scenarios, which does not seem unreasonable. This time could be further reduced by parallelization, since different machines could work on different parts of the meta-provenance forest in parallel.

5.6 Backtesting speed

Next, we evaluate the backtesting speed using the repair candidates listed in Table 2. For each candidate, we sampled packet traces at the network ingress from the log, and replayed them for backtesting. The top line in Figure 9b shows the time needed to backtest all the candidates sequentially; testing all nine of them took about two minutes, which already seems reasonably fast. However, the less time backtesting takes, the more repair candidates we can afford to consider. The lower line in Figure 9b shows the time needed to *jointly* backtest the first k candidates using the multi-query optimization technique from Section 4.4, which merges the candidates into a single “backtesting program”. With this, testing all nine candidates took about 40 seconds. This large speedup is expected because the repairs are small and fairly similar (since they are all intended to fix the same problem); hence, there is a substantial amount of overlap between the individual backtests, which the multi-query technique can then eliminate.

5.7 Scalability

To evaluate the scalability of meta provenance with regard to the network size, we tested the turnaround time of query Q1 on larger networks which contained up to 169 routers and 549 hosts. We obtained these networks by adding more routers and hosts to the basic Stanford campus network. Moreover, we increased the number of hosts that replay traffic traces [5] to up to 16. We generated synthetic traffic on the remaining hosts, and used higher traffic rates in larger networks to emulate more hosts. As we can see from Figure 9c, the turnaround time increased linearly with the network size, but it was within 50 seconds for all cases. As the breakdown shows, the increase mainly comes from the latency increase of the historical lookups and of the replay. This is because the additional nodes and traffic caused the size of the controller state to increase. This in turn resulted in a longer time to search through the controller state, and to replay the messages. Repair generation and constraint solving time only see minor increases. This is expected because the meta provenance forest is generated from only relevant parts of the log, the size of which is relatively stable when the affected flows are given.

5.8 Applicability to other languages

To see how well meta provenance works for languages other than NDlog, we developed meta models for Trema [51] and Pyretic [37]. This required only a moderate effort (16 person-hours). Our Trema model contains 42 meta rules and 32 meta tuples; it covers basic control flow (e.g., functional calls, conditional jumps) and data flow semantics (e.g., constants, expressions, variables, and objects) of Ruby. The Pyretic model contains 53 meta rules and 41 meta tuples; it describes a set of imperative features of Python, similar to that of Ruby. It also encodes the Pyretic NetCore syntax (from Figure 4 in [37]). Developing such a model is a one-time investment – once rules for a new language are available, they can be applied to any program in that language.

To verify that these models generate effective fixes, we recreated the scenarios in Section 5.3 for Trema and Pyretic. We could not reproduce Q4 in Pyretic because

	Q1	Q2	Q3	Q4	Q5
Trema (Ruby)	7/2	10/2	11/2	10/2	14/3
Pyretic (DSL + Python)	4/2	11/2	9/2	-	14/3

Table 3: Results for Trema and Pyretic. For each scenario from Section 5.3, we show how many repair candidates are generated, and how many passed backtesting.

the Pyretic abstraction and its runtime already prevents such problems from happening. Table 3 shows our results. Overall, the number of repairs that were generated and passed backtesting are relatively stable across the different languages. For Q1, we found fewer repair candidates for Pyretic than for RapidNet and Trema; this is because an implementation of the same logic in different languages can provide different “degrees of freedom” for possible repairs. (For instance, an equality check $Swi == 2$ in RapidNet would be $match(switch = 2)$ in Pyretic; a fix that changes the operator to $>$ is possible in the former but disallowed in the latter because of the syntax of $match$.) In all cases, meta provenance produced at least one repair that passed the backtesting phase.

6 Related Work

Provenance: Provenance [6] has been applied to a wide range of systems [3, 12, 18, 38, 56]. It has been used for network diagnostics before – e.g., in [10, 54, 61, 62] – but these solutions only explain why some data was or was not computed from some given input data; they do not include the program in the provenance and thus, unlike our approach, cannot generate program fixes. We have previously sketched our approach in [53]; the present paper adds a full algorithm and an experimental evaluation.

Program slicing: Given a specification of the output, program slicing [1, 42, 52] can capture relevant parts of the program by generating a reduced program, which is obtained by eliminating statements from the original program. However, slices do not encode causality and thus cannot be directly used for generating repairs.

Network debugging: There is a rich literature on finding bugs and/or certifying their absence. Some systems, such as [15, 17, 24, 25, 26, 58], use static analysis for this purpose; others, including [46, 47, 55, 57], use dynamic testing. Also, some domain-specific languages can enable verification of specific classes of SDN programs [2, 28, 39]. In contrast, the focus of our work is not verification or finding bugs, but generating *fixes*.

Automated program repair: Tools for repairing programs have been developed in several areas. The software engineering community has used genetic programming [30], symbolic execution [40], and program synthesis [8] to fix programs; they usually rely on a test suite or a formal specification to find fixes and sometimes propose only specific kinds of fixes. In the systems community, ClearView [43] mines invariants in programs, corre-

lates violations with failures, and generates fixes at runtime; ConfDiagnoser [59] compares correct and undesired executions to find suspicious predicates in the program; and Sidiroglou et al. [48] runs attack vectors on instrumented applications and then generates fixes automatically. In databases, ConQueR [50] can refine a SQL query to make certain tuples appear in, or disappear from, the output; however, it is restricted to SPJA queries and cannot handle general controller programs. These systems primarily rely on heuristics, whereas our proposed approach uses provenance to track causality and can thus pinpoint specific root causes.

In the networking domain specifically, the closest solutions are NetGen [45] and Hojjat et al. [22], which synthesize changes to an existing network to satisfy a desired property or to remove incorrect configurations, which are specified as regular expressions or Horn clauses. While these tools can generate optimal changes, e.g., the smallest number of next-hop routing changes, they are designed for repairing the data plane, i.e., a snapshot of the network configuration at a particular time; our approach repairs control programs and considers dynamic network configuration changes triggered by network traffic.

Synthesis: One way to avoid buggy network configurations entirely is to synthesize them from a specification of the operator’s intent as, e.g., in Genesis [49]. However, it is unclear whether this approach works well for complex networks or policies, so having a way to find and fix bugs in manually written programs is still useful.

7 Conclusion

Network diagnostics is almost a routine for today’s operators. However, most debuggers can only find bugs, but not suggest a fix. In this paper, we have taken a step towards better tool support for network repair, using a novel data structure that we call meta provenance. Like classic provenance, meta provenance tracks causality; but it goes beyond data causality and treats the program as just another kind of data. Thus, it can be used to reason about program changes that prevent undesirable events or create desirable events. While meta provenance falls short of our (slightly idealistic) goal of an automatic “Fix it!” button for SDNs, we believe that it does represent a step in the right direction. As our case studies show, meta provenance can generate high-quality repairs for realistic network problems in one minute, with no help from the human operator.

Acknowledgments: We thank our shepherd Nate Foster and the anonymous reviewers for their comments and suggestions. This work was supported in part by NSF grants CNS-1054229, CNS-1065130, CNS-1453392, CNS-1513679, and CNS-1513734, as well as DARPA/I2O contract HR0011-15-C-0098.

References

- [1] H. Agrawal and J. R. Horgan. Dynamic program slicing. In *Proc. PLDI*, 1990.
- [2] C. J. Anderson, N. Foster, A. Guha, J.-B. Jeanin, D. Kozen, C. Schlesinger, and D. Walker. NetKAT: Semantic foundations for networks. In *Proc. POPL*, 2014.
- [3] A. Bates, D. Tian, K. R. Butler, and T. Moyer. Trustworthy whole-system provenance for the Linux kernel. In *Proc. USENIX Security*, 2015.
- [4] R. Beckett, X. K. Zou, S. Zhang, S. Malik, J. Rexford, and D. Walker. An assertion language for debugging SDN applications. In *Proc. HotSDN*, 2014.
- [5] T. Benson, A. Akella, and D. A. Maltz. Network traffic characteristics of data centers in the wild. In *Proc. IMC*, 2010.
- [6] P. Buneman, S. Khanna, and T. Wang-Chiew. Why and where: A characterization of data provenance. In *Proc. ICDT*, 2001.
- [7] M. Canini, D. Venzano, P. Perešini, D. Kostić, and J. Rexford. A NICE way to test openflow applications. In *Proc. NSDI*, 2012.
- [8] S. Chandra, E. Torlak, S. Barman, and R. Bodik. Angelic debugging. In *Proc. ICSE*, 2011.
- [9] A. Chapman and H. Jagadish. Why not? In *Proc. SIGMOD*, 2009.
- [10] A. Chen, Y. Wu, A. Haeberlen, W. Zhou, and B. T. Loo. The Good, the Bad, and the Differences: Better Network Diagnostics with Differential Provenance. In *Proc. SIGCOMM*, 2016.
- [11] L. De Moura and N. Bjørner. Z3: An efficient SMT solver. In *Proc. TACAS*, 2008.
- [12] M. Dietz, S. Shekhar, Y. Pisetsky, A. Shu, and D. S. Wallach. Quire: Lightweight provenance for smart phone operating systems. In *Proc. USENIX Security*, 2011.
- [13] R. Durairajan, J. Sommers, and P. Barford. Controller-agnostic SDN debugging. In *Proc. CoNEXT*, 2014.
- [14] D. Erickson. The Beacon OpenFlow controller. In *Proc. HotSDN*, 2013.
- [15] N. Feamster and H. Balakrishnan. Detecting BGP configuration faults with static analysis. In *Proc. NSDI*, 2005.
- [16] A. Feldmann, O. Maennel, Z. M. Mao, A. Berger, and B. Maggs. Locating Internet routing instabilities. In *Proc. SIGCOMM*, 2004.
- [17] A. Fogel, S. Fung, L. Pedrosa, M. Walraed-Sullivan, R. Govindan, R. Mahajan, and T. Millstein. A general approach to network configuration analysis. In *Proc. NSDI*, 2015.
- [18] A. Gehani and D. Tariq. SPADE: Support for provenance auditing in distributed environments. In *Proc. Middleware*, 2012.
- [19] G. Giannakis, G. Alonso, and D. Kossmann. SharedDB: Killing one thousand queries with one stone. In *Proc. VLDB*, 2012.
- [20] Z. Guo, S. McDirmid, M. Yang, L. Zhuang, P. Zhang, Y. Luo, T. Bergan, M. Musuvathi, Z. Zhang, and L. Zhou. Failure recovery: When the cure is worse than the disease. In *Proc. HotOS*, 2013.
- [21] N. Handigol, B. Heller, V. Jeyakumar, D. Mazières, and N. McKeown. I know what your packet did last hop: Using packet histories to troubleshoot networks. In *Proc. NSDI*, 2014.
- [22] H. Hojjat, P. Reummer, J. McClurgh, P. Cerny, and N. Foster. Optimizing Horn solvers for network repair. In *Proc. FMCAD*, 2016.
- [23] E. Katz-Bassett, H. V. Madhyastha, J. P. John, A. Krishnamurthy, D. Wetherall, and T. Anderson. Studying black holes in the Internet with Hubble. In *Proc. NSDI*, 2008.
- [24] P. Kazemian, M. Chang, H. Zeng, G. Varghese, N. McKeown, and S. Whyte. Real time network policy checking using header space analysis. In *Proc. NSDI*, 2013.
- [25] P. Kazemian, G. Varghese, and N. McKeown. Header space analysis: Static checking for networks. In *Proc. NSDI*, 2012.
- [26] A. Khurshid, X. Zou, W. Zhou, M. Caesar, and P. B. Godfrey. VeriFlow: Verifying network-wide invariants in real time. In *Proc. NSDI*, 2013.
- [27] D. Kim, J. Nam, J. Song, and S. Kim. Automatic patch generation learned from human-written patches. In *Proc. ICSE*, 2013.
- [28] H. Kim, J. Reich, A. Gupta, M. Shahbaz, N. Feamster, and R. Clark. Kinetic: Verifiable dynamic network control. In *Proc. NSDI*, 2015.
- [29] B. Lantz, B. Heller, and N. McKeown. A network in a laptop: rapid prototyping for software-defined networks. In *Proc. HotNets*, 2010.
- [30] C. Le Goues, M. Dewey-Vogt, S. Forrest, and W. Weimer. A systematic study of automated program repair: Fixing 55 out of 105 bugs for \$8 each. In *Proc. ICSE*, 2012.
- [31] Z. Li, S. Lu, S. Myagmar, and Y. Zhou. CP-Miner: A tool for finding copy-paste and related bugs in operating system code. In *Proc. OSDI*, 2004.
- [32] Z. Li, L. Tan, X. Wang, S. Lu, Y. Zhou, and C. Zhai. Have things changed now?: An empirical study of bug characteristics in modern open source software. In *Proc. ASID*, 2006.

- [33] D. Logothetis, S. De, and K. Yocum. Scalable lineage capture for debugging DISC analysis. Technical Report CSE2012-0990, UCSD, 2012.
- [34] B. T. Loo, T. Condie, M. Garofalakis, D. E. Gay, J. M. Hellerstein, P. Maniatis, R. Ramakrishnan, T. Roscoe, and I. Stoica. Declarative networking. *Comm. ACM*, 52(11):87–95, 2009.
- [35] S. Madden, M. Shah, J. M. Hellerstein, and V. Raman. Continuously adaptive continuous queries over streams. In *Proc. SIGMOD*, 2002.
- [36] H. Mai, A. Khurshid, R. Agarwal, M. Caesar, P. B. Godfrey, and S. T. King. Debugging the data plane with Anteater. In *Proc. SIGCOMM*, 2011.
- [37] C. Monsanto, J. Reich, N. Foster, J. Rexford, and D. Walker. Composing software-defined networks. In *Proc. NSDI*, 2013.
- [38] K.-K. Muniswamy-Reddy, D. A. Holland, U. Braun, and M. Seltzer. Provenance-aware storage systems. In *Proc. USENIX ATC*, 2006.
- [39] T. Nelson, A. D. Ferguson, M. J. Scheer, and S. Krishnamurthi. Tierless programming and reasoning for software-defined networks. In *Proc. NSDI*, 2014.
- [40] H. D. T. Nguyen, D. Qi, A. Roychoudhury, and S. Chandra. SemFix: Program repair via semantic analysis. In *Proc. ICSE*, 2013.
- [41] K. Pan, S. Kim, and E. J. Whitehead Jr. Toward an understanding of bug fix patterns. *Empirical Software Engineering*, 14(3):286–315, 2009.
- [42] R. Perera, U. A. Acar, J. Cheney, and P. B. Levy. Functional programs that explain their work. In *Proc. ICFP*, 2012.
- [43] J. H. Perkins, S. Kim, S. Larsen, S. Amarasinghe, J. Bachrach, M. Carbin, C. Pacheco, F. Sherwood, S. Sidiroglou, G. Sullivan, W.-F. Wong, Y. Zibin, M. D. Ernst, and M. Rinard. Automatically patching errors in deployed software. In *Proc. SOSP*, 2009.
- [44] RapidNet project web page. <http://netdb.cis.upenn.edu/rapidnet/>.
- [45] S. Saha, S. Prabhu, and P. Madhusudan. NetGen: Synthesizing data-plane configurations for network policies. In *Proc. SOSP*, 2015.
- [46] C. Scott, A. Panda, V. Brajkovic, G. Nacula, A. Krishnamurthy, and S. Shenker. Minimizing faulty executions of distributed systems. In *Proc. NSDI*, 2016.
- [47] C. Scott, A. Wundsam, B. Raghavan, A. Panda, A. Or, J. Lai, E. Huang, Z. Liu, A. El-Hassany, S. Whitlock, H. Acharya, K. Zarifis, and S. Shenker. Troubleshooting blackbox SDN control software with minimal causal sequences. In *Proc. SIGCOMM*, 2014.
- [48] S. Sidiroglou and A. D. Keromytis. Countering network worms through automatic patch generation. *Proc. IEEE Security and Privacy*, 2005.
- [49] K. Subramanian, L. D’Antoni, and A. Akella. Genesis: Synthesizing forwarding tables in multi-tenant networks. In *Proc. POPL*, 2017.
- [50] Q. T. Tran and C.-Y. Chan. How to conquer why-not questions. In *Proc. SIGMOD*, 2010.
- [51] Trema: Full-Stack OpenFlow Framework in Ruby and C, 2019. <https://trema.github.io/trema/>.
- [52] M. Weiser. Program slicing. In *Proc. ICSE*, 1981.
- [53] Y. Wu, A. Chen, A. Haeberlen, W. Zhou, and B. T. Loo. Automated network repair with meta provenance. In *Proc. HotNets*, 2015.
- [54] Y. Wu, M. Zhao, A. Haeberlen, W. Zhou, and B. T. Loo. Diagnosing missing events in distributed systems with negative provenance. In *Proc. SIGCOMM*, 2014.
- [55] A. Wundsam, D. Levin, S. Seetharaman, and A. Feldmann. OFRewind: Enabling record and replay troubleshooting for networks. In *Proc. USENIX ATC*, 2011.
- [56] M. Zaharia, M. Chowdhury, T. Das, A. Dave, J. Ma, M. McCauley, M. J. Franklin, S. Shenker, and I. Stoica. Resilient distributed datasets: A fault-tolerant abstraction for in-memory cluster computing. In *Proc. NSDI*, 2012.
- [57] H. Zeng, P. Kazemian, G. Varghese, and N. McKeown. Automatic test packet generation. In *Proc. CoNEXT*, 2012.
- [58] H. Zeng, S. Zhang, F. Ye, V. Jeyakumar, M. Ju, J. Liu, N. McKeown, and A. Vahdat. Libra: Divide and conquer to verify forwarding tables in huge networks. In *Proc. NSDI*, 2014.
- [59] S. Zhang and M. D. Ernst. Automated diagnosis of software configuration errors. In *Proc. ICSE*, 2013.
- [60] W. Zhou, Q. Fei, A. Narayan, A. Haeberlen, B. T. Loo, and M. Sherr. Secure network provenance. In *Proc. SOSP*, 2011.
- [61] W. Zhou, S. Mapara, Y. Ren, Y. Li, A. Haeberlen, Z. Ives, B. T. Loo, and M. Sherr. Distributed time-aware provenance. In *Proc. VLDB*, 2013.
- [62] W. Zhou, M. Sherr, T. Tao, X. Li, B. T. Loo, and Y. Mao. Efficient querying and maintenance of network provenance at Internet-scale. In *Proc. SIGMOD*, 2010.

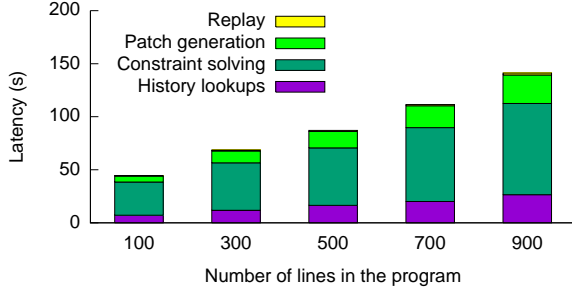


Figure 10: Scalability of repair generation phase with program size for Q1.

A Scalability

The controller programs from the scenarios in Section 5.3 have between 19 and 120 lines of code. To evaluate the scalability of meta provenance with regard to program size, we tested the engine on larger programs which contained from 100 to 900 lines of code. We obtained these programs by augmenting the Trema controller program in Q1 with various numbers of policies of an operational zone switch in the Stanford campus network. As we can see from Figure 10, the turnaround time increases linearly with the program size. The increase is uniform in all components: first, we need to replay more controller traffic because more policies are enforced reactively; second, history lookups took longer because the size of controller state is larger; last, the time spent on constraint solving and patch generation increases because larger programs contain more syntactic elements to consider for repair and therefore incur larger provenance forests. However, despite the increase in program size, the number of repairs are stable across the experiment. Although the additional code causes the provenance forest to grow initially, most of the trees quickly become too costly and are not explored further. Instead, meta provenance focuses on relevant parts of the program.

B Meta models

In this section, we present meta models for NDlog [34], Trema [51], and Pyretic [37]. The meta models are all written in NDlog. Unlike in the heavily-simplified μ Dlog, instances of the same syntactic element can have different arities in real-world languages. For instance, considering a NDlog rule r with three selection predicates. The meta rule $h2$ from Figure 4 can only encode rules with exactly two selection predicates and a different meta rule is required to encode r . Writing all possible meta rules is repetitive. For compactness, we present them using template rules. For instance, the meta model uses `Base(k) (@C, Tab, Vals[k])` to repre-

sent a base table with k columns. Table 4 summarizes the procedures for expanding template rules into concrete rules.

B.1 NDlog

Figure 11 shows the full set of meta rules for NDlog. We briefly explain each meta rule below.

Two types of tuples exist in the NDlog runtime: `State` represents materialized states, `Message` represents transient messages. Tuples can exist for two reasons: they can be inserted as base tuples ($h1-h2$) or derived via rules ($h3-h4$). A rule “fires” and derives a tuple when a) there is an assignment of values in the head and b) all constraint predicates are satisfied ($h5-h7$).

The next seven meta rules compute joins. First, whenever a (syntactic) tuple appears as in a rule definition, each concrete tuple that exists at runtime generates one variable assignment for that tuple ($p1-p2$). Depending on the number of tuples in the rule body (calculated in rules $j1-j2$), a different meta rule will be triggered to compute a full cross-product of all values in a combination of tuple predicates ($j3-j5$).

The next six meta rules evaluate expressions. Expressions can appear in two different places – in a rule head and in a constraint predicate – but since the evaluation logic is the same, we use a single set of meta rules for both cases. Expressions can come from integer constants ($e1$), composition of sub-expressions ($e2$), or any value of a `Join` meta tuple ($e3$). Values in the head tuple are assigned from expressions ($a1$). Constraint predicates are defined over boolean expressions ($c1-c2$).

The final three meta rules describe an aggregation syntax in NDlog called “`AggWrap`”. An “`AggWrap`” rule counts the number of derivations triggered by a message via itself. Note that, each message is associated with a unique trigger ID, or `TID` (generated in $h1$ and $h3$). A derivation is triggered when all constraints are matched ($g1$). The aggregation rule counts all such derivations caused by a unique message ($g2-g3$).

B.2 Trema

Figure 12 and Figure 13 show the full set of meta rules for Trema [51]. Unlike NDlog, Trema is based on Ruby and mostly imperative. To capture the imperative control flow of Ruby, the meta model remembers which lines have been executed using a table called `ExecLine(@P, B, SID, Ln)`. For example, the tuple `ExecLine(@P, F, 97, 10)` says that function `F` executed its 10th line during its 97th invocation. To model the imperative data flow of Ruby, the meta model maintains a table called `Value(@P, Adr, B, SID, Ln, Arg, Val, Typ)`,

```

/* Tuple derivation */
h1 Message(k) (@C, Tab, Key, TID, Vals[k], Typs[k]) :- Base(k) (@C, Tab, Vals[k]),
    Schema(k) (@C, Tab, Keys[k], Timeout, Typs[k]), Timeout == 0, Key := f.primary(Keys, Vals), TID := f.unique().
h2 State(k) (@C, Tab, Key, Vals[k], Typs[k]) :- Base(k) (@C, Tab, Vals[k]),
    Schema(k) (@C, Tab, Keys[k], Timeout, Typs[k]), Timeout == 1, Key := f.primary(Keys, Vals).
h3 Message(k) (@C, Tab, Key, TID, Vals[k], Typs[k]) :-
    Head(k) (@C, Rul, Tab, Key, Vals[k], Timeout, Typs[k]), Timeout == 0, TID := f.unique().
h4 State(k) (@C, Tab, Key, Vals[k], Typs[k]) :- Head(k) (@C, Rul, Tab, Key, Vals[k], Timeout, Typs[k]), Timeout == 1.
h5 Head(k) (@C, Rul, Tab, Key, Val[k], Timeout, Typ[k]) :-
    HeadMeta(k) (@C, Rul, Tab, Arg[k]), Schema(k) (@C, Tab, Key[k], Timeout, Typ[k]), Key := f.primary(Key[k], Val[k]),
    HeadValue(@C, Rul, JID, Arg{k}, Val{k}, Typ{k}), Arg{k} != Arg{k'}, ConstraintMatch(@C, Rul, JID).
h6 ConstraintMatch(@C, Rul, JID) :- ConstraintCount(@C, Rul, N), N == 0.
h7 ConstraintMatch(@C, Rul, JID) :-
    ConstraintCount(@C, Rul, N), Constraint(@C, Rul, JID, CID{k}, Val{k}), N == (k), Val{k} == 1, CID{k} > CID{k'}.

/* Predicate derivation */
p1 MessagePredicate(k) (@C, Rul, Tab, Key, TID, Args[k], Vals[k], Typs[k]) :-
    Message(k) (@C, Tab, Key, TID, Vals[k], Typs[k]), PredicateMeta(k) (@C, Rul, Tab, Args[k]).
p2 StatePredicate(k) (@C, Rul, Tab, Key, Args[k], Vals[k], Typs[k]) :-
    State(k) (@C, Tab, Key, Vals[k], Typs[k]), PredicateMeta(k) (@C, Rul, Tab, Args[k]).

/* Joining predicates */
j1 MessagePredicateCount(@C, Rul, a_count<Tab>) :- PredicateMeta(k) (@C, Rul, Tab, Args[k]).
j2 StatePredicateCount(@C, Rul, a_count<Tab>) :- PredicateMeta(k) (@C, Rul, Tab, Args[k]).
j3 Join( $\sum_{i=1}^n p_i$ ) (@C, Rul, JID, TID, Args' {n} - [p_i], Vals' {n} - [p_i], Typs' {n} - [p_i]) :- JID := f.unique(),
    StatePredicate(p_i) (@C, Rul, Tab' {n}, Key' {n}, Args' {n} - [p_i], Vals' {n} - [p_i], Typs' {n} - [p_i]),
    StatePredicateCount(@C, Rul, N'), MessagePredicateCount(@C, Rul, N), N' == (n), N == 0, TID := f.unique().
j4 Join( $\sum_{i=1}^n k_i$ ) (@C, Rul, JID, TID, Args' {m} - [k_i], Vals' {m} - [k_i], Typs' {m} - [k_i]) :- JID := f.unique(),
    MessagePredicate(k_i) (@C, Rul, Tab' {m}, Key' {m}, TID, Args' {m} - [k_i], Vals' {m} - [k_i], Typs' {m} - [k_i]) {m},
    MessagePredicateCount(@C, Rul, N), N == (m), StatePredicateCount(@C, Rul, N'), N' == 0.
j5 Join( $\sum_{i=1}^n p_i + \sum_{i=1}^m k_i$ ) (@C, Rul, JID, TID, Args' {m} - [k_i], Args' {n} - [p_i], Vals' {m} - [k_i], Vals' {n} - [p_i], Typs' {m} - [k_i],
    Typs' {n} - [p_i]) :- MessagePredicate(k_i) (@C, Rul, Tab' {m}, Key' {m}, TID, Args' {m} - [k_i], Vals' {m} - [k_i],
    Typs' {m} - [k_i]) {m}, MessagePredicateCount(@C, Rul, N), N == (m), StatePredicate(p_i) (@C, Rul, Tab' {n}, Key' {n},
    Args' {n} - [p_i], Vals' {n} - [p_i], Typs' {n} - [p_i]), StatePredicateCount(@C, Rul, N'), N' == (n), JID := f.unique().

/* Expression */
e1 Expression(@C, Rul, JID, Arg(q), Val(q), Typ(q)) :- Join(k) (@C, Rul, JID, TID, Arg[k], Val[k], Typ[k]).
e2 Expression(@C, Rul, JID, ID, Val, Typ) :- Constant(@C, Rul, ID, Val), JID := *.
e3 Expression(@C, Rul, JID, ID'', Val, Typ) :-
    Operator(@C, Rul, ID'', Opr), LeftEdge(@C, Rul, ID', ID''), RightEdge(@C, Rul, ID'', ID''),
    Expression(@C, Rul, JID, ID', Val', Typ'), Expression(@C, Rul, JID, ID'', Val'', Typ''),
    Val := Val' Opr Val'', ID' != ID'', f.match(Typ', Typ''), Typ := f.type(Typ', Typ'').

/* Assignments */
a1 HeadValue(@C, Rul, JID, Arg, Val, Typ) :-
    Assignment(@C, Rul, Arg, ID, Typ), Expression(@C, Rul, JID, ID, Val, Typ'), f.match(Typ, Typ').

/* Constraint */
c1 ConstraintCount(@C, Rul, a_count<ID>) :- IsConstraint(@C, Rul, ID).
c2 Constraint(@C, Rul, JID, ID, Val) :- Expression(@C, Rul, JID, ID, Val, Typ), IsConstraint(@C, Rul, ID), Typ == Bool.

/* Aggregation */
g1 Match(@C, Rul, TID, JID) :- Join(k) (@C, Rul, JID, TID, Args[k], Vals[k], Typs[k]), ConstraintCount(@C, Rul, N),
    IsAggWrap(@C, Rul), Constraint(@C, Rul, JID, ID{p}, Val{p}), Val{p} == 1, ID{k} > ID{k'}, N == (k).
g2 Count(@C, Rul, TID, a_count<JID>) :- Match(@C, Rul, TID, JID).
g3 MessagePredicate(k) (@C, Rul, Tab, Key, TID', Args[k], Arg, Vals[k], N) :- Count(@C, Rul, TID, N),
    MessagePredicate(k) (@C, Rul, Tab, Key, TID, Args[k], Vals[k]), Arg := 'count', TID' := f.unique().

```

Figure 11: Meta rules for NDlog [34].

```

/* Processing PacketIn */
// Entering the "packet.in" handler
pi1 ExecLine(@P,B,SID,Ln) :- packetIn(k) (@C,Swi,SID,Fld[k],Val[k],Typ[k]),
    EntryLine(@P,B,Ln), FuncCall(k) (@P,B',Ln,B,EID[k]), B == packet.in.
// Creating the "packet" object
pi2 Expression(@P,B,SID,Ln,EID,Adr,Val,Typ) :-
    packetIn(k) (@C,Swi,SID,Fld[k],Val[k],Typ[k]), EntryLine(@P,B,Ln), FuncCall(k) (@P,B',Ln,B,EID[k]),
    B == packet.in, EID := EID2, Adr := f.new(), Val := f.new(), Typ := Class.
// Creating attributes of the "packet" object
pi3 Value(@P,Adr',B,SID,Ln,Arg',Val',Typ'), ClassMap(@P,Val,Attr,Adr') :-
    packetIn(k) (@C,Swi,SID,Fld[k],Val[k],Typ[k]), EntryLine(@P,B,Ln), FuncCall(k) (@P,B',Ln,B,EID[k]),
    Adr' := f.new(), Arg := Fld(k), Attr := Fld(k), Val' := Val(k), Typ' := Typ(k),
    B == packet.in, Expression(@P,B,SID,Ln,EID,Adr,Val,Typ).
// Creating the "switch" variable
pi4 Expression(@P,B,SID,Ln,EID,Adr,Val,Typ) :-
    packetIn(k) (@C,Swi,SID,Fld[k],Val[k],Typ[k]), EntryLine(@P,B,Ln), FuncCall(k) (@P,B',Ln,B,EID[k]),
    B == packet.in, EID := EID1, Adr := f.new(), Val := Swi, Typ := Fixnum.

/* Installing flow entries */
// Installing a "micro" flow entry
fe1 flowEntryMicro(@P,Swi,SID,Prt) :-
    FuncExec(k) (@P,B,SID,Ln,EID[k],B',Ln',Arg'[k]), B' == send_flow_mod_add,
    Expression(@P,B,SID,Ln,EID1,Adr1,Val1,Typ1), Typ1 == Fixnum, Swi := Val1,
    Expression(@P,B,SID,Ln,EID2,Adr2,Val2,Typ2), Typ2 == Fixnum, Prt := Val2.
fe2 flowEntry(k) (@P,Swi,SID,Fld[k],Val[k],Typ[k],Prt) :- flowEntryMicro(@P,Swi,SID,Prt),
    packetIn(k) (@P,Swi,SID,Fld[k],Val[k],Typ[k]).
// Installing a "macro" flow entry
fe3 flowEntry(k) (@P,Swi,SID,Fld[k],Val[k],Typ[k],Prt) :-
    FuncExec(k) (@P,B,SID,Ln,EID[k],B',Ln',Arg[k]), Expression(@P,B,SID,Ln,EID{k},Adr{k},Val{k},Typ{k}),
    B' == send_flow_mod_wildcard, Prt := Val9.
// Sending a PacketOut message to handle the cached packet on the switch
fe4 packetOutMicro(@P,Swi,SID,Prt) :-
    FuncExec(k) (@P,B,SID,Ln,EID[k],B',Ln',Arg'[k]), B' == send_packet_out,
    Expression(@P,B,SID,Ln,EID1,Adr1,Val1,Typ1), Typ1 == Fixnum, Swi := Val1,
    Expression(@P,B,SID,Ln,EID2,Adr2,Val2,Typ2), Typ2 == Fixnum, Prt := Val2.
fe5 packetOut(k) (@P,Swi,SID,Fld[k],Val[k],Typ[k],Prt) :- packetOutMicro(@P,Swi,SID,Prt),
    packetIn(k) (@P,Swi,SID,Fld[k],Val[k],Typ[k]).

/* If clauses */
// Executing a if clause when its predicate is satisfied
cj1 ExecLine(@P,B,SID,Tln) :-
    IfClause(@P,B,Ln,EID,Tln,Fln), Expression(@P,B,SID,Ln,EID,Adr,Val,Typ), Val == 1, Typ := TrueClass.
cj2 Value(@P,Adr',B,SID,Tln,Arg',Val',Typ') :- Value(@P,Adr',B,SID,Ln,Arg',Val',Typ'),
    IfClause(@P,B,Ln,EID,Tln,Fln), Expression(@P,B,SID,Ln,EID,Adr,Val,Typ), Val == 1, Typ := TrueClass.
// Skipping a if clause when its predicate is not satisfied
cj3 ExecLine(@P,B,SID,Fln) :-
    IfClause(@P,B,Ln,EID,Tln,Fln), Expression(@P,B,SID,Ln,EID,Adr,Val,Typ), Val == 0, Typ := FalseClass.
cj4 Value(@P,Adr',B,SID,Fln,Arg',Val',Typ') :- Value(@P,Adr',B,SID,Ln,Arg',Val',Typ'),
    IfClause(@P,B,Ln,EID,Tln,Fln), Expression(@P,B,SID,Ln,EID,Adr,Val,Typ), Val == 0, Typ := FalseClass.

/* Expression */
// A constant derives an expression
e1 Expression(@P,B,SID,Ln,EID,Adr,Val,Typ) :-
    ExecLine(@P,B,SID,Ln), Constant(@P,B,Ln,CID,Val,Typ), f_hash(EID), Adr := f.new().
// A local variables derives an expression
e2 Expression(@P,B,SID,Ln,EID,Adr,Val,Typ) :-
    ExecLine(@P,B,SID,Ln), VarName(@P,B,Ln,Arg), Value(@P,Adr,B,SID,Ln,Arg,Val,Typ), EID := Arg, f_arg(Arg,0).
// An object attribute derives an expressions
e3 Expression(@P,B,SID,Ln,Arg,Adr',Val',Typ') :- Expression(@P,B,SID,Ln,EID,Adr,Val,Typ),
    AttributeOf(@P,B,Ln,EID,Attr), f_concat(Arg,EID,.,Attr), Value(@P,Adr',B,SID,Ln,Arg,Val',Typ'),
    Typ == Class, ClassMap(@P,Val,Attr,Adr'), f_arg(EID,0), f_arg(Attr,0).
// Compositions of sub-expressions
e4 Expression(@P,B,SID,Ln,EID,Adr,Val,Typ) :- Operator(@P,B,Ln,Opr,EID1,EID2),
    Expression(@P,B,SID,Ln,EID1,Adr1,Val1,Typ1), Expression(@P,B,SID,Ln,EID2,Adr2,Val2,Typ2), EID1 != EID2,
    Val := Val1 Opr Val2, f_hash(EID), Adr := f.new(), f_match(Typ1, Typ2), Typ := f_type(Typ1, Typ2).
// Checking or retrieving a hash table entry derive expressions
e5 HashTableCount(@P,B,SID,Ln,Arg,Key,a_count<Val>) :- HashTableCheck(@P,B,SID,Ln,Arg,KID),
    Expression(@P,B,SID,Ln,KID,Adr',Val',Typ'), HashTableEntry(@P,B,SID,Ln,Arg,Key,Val,Typ), Key == Val'.
e6 Expression(@P,B,SID,Ln,EID,Adr,Val,Typ) :- HashTableCount(@P,B,SID,Ln,Arg,Key,N),
    N > 0, f_concat(EID,Key,in,Arg), Adr := f.new(), Val := True, Typ := TrueClass.
e7 Expression(@P,B,SID,Ln,EID,Adr,Val,Typ) :- HashTableCount(@P,B,SID,Ln,Arg,Key,N),
    N == 0, f_concat(EID,Key,in,Arg), Adr := f.new(), Val := False, Typ := FalseClass.
e8 Expression(@P,B,SID,Ln,EID,Adr,Val,Typ) :- HashTableGet(@P,B,Ln,Arg,KID),
    Expression(@P,B,SID,Ln,KID,Adr',Val',Typ'), HashTableEntry(@P,B,SID,Ln,Arg,Key,Val,Typ), Key == Val',
    Adr := f.new(), f_concat(EID,Arg,#,Key).

```

Figure 12: Meta rules for Trema [51] (part 1).

```

/* Function call */
// Triggering a function call
fc1 FuncExec(k) (@P,B,SID,Ln,EID[k],B',Ln',Arg'[k]) :-
    ExecLine(@P,B,SID,Ln), FuncDecl(k) (@P,B',Arg'[k],Ln'), FuncCall(k) (@P,B,Ln,B',EID[k]).
// Copying arguments to the callee
fc2 Value(@P,Adr',B',SID,Ln',Arg',Val,Typ) :- FuncExec(k) (@P,B,SID,Ln,EID[k],B',Ln',Arg'[k]),
    Expression(@P,B,SID,Ln,EID,Adr,Val,Typ), EID == EID(k), Adr' := f_new(), Arg' := Arg'(k).
// Copying attributes of object arguments to the callee
fc3 Value(@P,Adr'',B',SID,Ln',Arg'',Val'',Typ'') :- FuncExec(k) (@P,B,SID,Ln,EID[k],B',Ln',Arg'[k]),
    Expression(@P,B,SID,Ln,EID,Adr,Val,Typ), EID == EID(k), ClassMap(@P,Val,Attr,Adr''),
    Typ == Class, f_concat(Arg'',Arg'(k),.,Attr), Value(@P,Adr'',B,SID,Ln,Arg'',Val'',Typ'').
// Executing the function body
fc4 ExecLine(@P,B',SID,Ln') :- FuncExec(k) (@P,B,SID,Ln,EID[k],B',Ln',Arg'[k]).

/* Function return */
// Triggering a function return
fr1 FuncRet(@P,B',SID,Ln',EID') :- ExecLine(@P,B',SID,Ln'), Return(@P,B',Ln',EID').
// Copying the return value to the caller
fr2 Expression(@P,B,SID,Ln,EID,Adr,Val,Typ) :-
    FuncRet(@P,B',SID,Ln',EID'), FuncExec(k) (@P,B,SID,Ln,EID[k],B',Ln',Arg'[k]), Adr := f_new(),
    Expression(@P,B',SID,Ln',EID',Adr',Val',Typ'), Ln' > 0, EID := EID', Val := Val', Typ := Typ'.
// Returning to the caller
fr3 ExecLine(@P,B,SID,Ln'') :- FuncRet(@P,B',SID,Ln',EID'),
    FuncExec(k) (@P,B,SID,Ln,EID[k],B',Ln',Arg'[k]), NextLine(@P,B,Ln,Ln''), Ln != Ln''.

/* Objects */
// Calling the constructor
of1 FuncCallObject(@P,B,SID,Ln,B',Ln',EID[k],Adr,Val,Typ,Ini) :-
    ExecLine(@P,B,SID,Ln), ObjectNew(@P,B,Ln,Typ,B',Ln',EID[k]), Adr := f_new(), Val := f_new(), Ini := True.
// Allocating attributes
of2 Value(@P,Adr',B',SID,Ln',Arg',Val',Typ'), ClassMap(@P,Val,Attr,Adr') :-
    FuncCallObject(@P,B,SID,Ln,B',Ln',EID[k],Adr,Val,Typ,Ini), ObjectDecl(@P,Typ,Attrs,Typs), Adr' := f_new(),
    Arg' := Attr, Val' := Null, Typ' := Typs(k), Attr := Attrs(k), Ini == True.
// Allocating the object itself
of3 Value(@P,Adr',B',SID,Ln',Arg',Val',Typ'), ClassMap(@P,Val,Attr,Adr') :-
    FuncCallObject(@P,B,SID,Ln,B',Ln',EID[k],Adr,Val,Typ,Ini), Adr' := f_new(), Ln' := 1, Arg' := 'self',
    Val' := Adr, Typ' := Ref, Ini == True.
// Calling a member function
of4 FuncCallObject(@P,B,SID,Ln,B',Ln',EID[k],Adr,Val,Typ,Ini) :-
    Expression(@P,B,SID,Ln,EID,Adr,Val,Typ), FunctionOf(@P,B,Ln,EID,B',Ln',EID[k]), Typ == Ref, Ini := False.
// Copying attributes to a member function call and starting its execution
of5 Value(@P,Adr',B',SID,Ln',Arg',Val',Typ') :- FuncCallObject(@P,B,SID,Ln,B',Ln',EID[k],Adr,Val,Typ,Ini),
    ObjectDecl(@P,Typ,Attrs,Typs), Value(@P,Adr,B,SID,Ln,Arg,Val,Typ), ClassMap(@P,Val,Attr,Adr),
    Adr' := Adr, Arg' := Attr, Val' := Val, Typ' := Typ, Attr == Attrs(k), Ini == False.
of6 FuncCall(k) (@P,B,Ln,B',EID[k]) :- FuncCallObject(@P,B,SID,Ln,B',Ln',EID[k],Adr,Val,Typ,Ini).

/* Assignment */
// Assigning value to a variable
a1 Value(@P,Adr,B,SID,Ln',Arg,Val',Typ), ExecLine(@P,B,SID,Ln') :-
    Expression(@P,B,SID,Ln,Arg,Adr,Val,Typ), f_arg(Arg,1), Assignment(@P,B,Ln,Arg,EID),
    Expression(@P,B,SID,Ln,EID,Adr',Val',Typ), NextLine(@P,B,Ln,Ln'), Ln != Ln'.
// Propagating unchanged values
a2 AssignmentCount(@P,B,Ln,Arg,a_count<EID>) :- Assignment(@P,B,Ln,Arg,EID).
a3 NoAssignment(@P,B,Ln,Arg) :- AssignmentCount(@P,B,Ln,Arg,N), N == 0.
a4 Value(@P,Adr,B,SID,Ln',Arg,Val,Typ) :- Value(@P,Adr,B,SID,Ln,Arg,Val,Typ),
    NoAssignment(@P,B,Ln,Arg), NextLine(@P,B,Ln,Ln'), Ln != Ln', f_arg(Arg,1).

/* Hash table */
// Modifying a hash table entry
ht1 HashTableEntry(@P,B,SID,Ln,Arg,Key,Val,Typ), ExecLine(@P,B,SID,Ln') :- HashTableSet(@P,B,Ln,Arg,KID,VID),
    Expression(@P,B,SID,Ln,KID,Adr',Val',Typ'), Expression(@P,B,SID,Ln,VID,Adr'',Val'',Typ''),
    Key := Val', Val := Val'', Typ := Typ'', NextLine(@P,B,Ln,Ln'), Ln != Ln'.
// Propagating unchanged values
ht2 HashTableCount(@P,B,Ln,Arg,a_count<KID>) :- HashTableSet(@P,B,Ln,Arg,KID,VID).
ht3 NoHashTableSet(@P,B,SID,Ln,Arg,Key) :- HashTableCount(@P,B,Ln,Arg,N), N == 0.
ht4 HashTableEntry(@P,B,SID,Ln',Arg,Key,Val,Typ) :- HashTableEntry(@P,B,SID,Ln,Arg,Key,Val,Typ),
    NoHashTableSet(@P,B,Ln,Arg,Key), NextLine(@P,B,Ln,Ln').

```

Figure 13: Meta rules for Trema [51] (part 2).

Procedure	Template rule. \rightarrow Concrete rule with arity two ($k = 2$).
Replace (k) with k .	$A(@X) := B(@X, Z), Z == (k) . \rightarrow A(@X) := B(@X, Z), Z == 2 .$
Replace $Z[k]$ with $Z1, \dots, Zk$.	$A(@X) := B(k) (@X, Z[k]) . \rightarrow A(@X) := B2(@X, Z1, Z2) .$
Replace $B(@X, Z\{k\})$ with $B(@X, Z1), \dots, B(@X, Zk) .$	$A(@X) := B(@X, Z\{k\}) . \rightarrow A(@X) := B(@X, Z1), B(@X, Z2) .$
Replace $B(@X, Z\{k\}, Z\{k'\})$ with $\dots, B(@X, Zi, Zj), \dots$ where $i, j \in 1..k, i < j$	$A(@X) := B(@X, Z\{k\}), Z\{k\} > Z\{k'\} .$ $\rightarrow A(@X) := B(@X, Z1, Z2), Z1 > Z2 .$
Replace $B(@X, Z\{k\}, Z\{k''\})$ with $\dots, B(@X, Zi, Zj), \dots$ where $i, j \in 1..k, i \neq j$	$A(@X) := B(@X, Z\{k\}), Z\{k\} > Z\{k''\} .$ $\rightarrow A(@X) := B(@X, Z1, Z2), Z1 > Z2 .$

Table 4: Procedures for deriving concrete rules from template rules. Each template rule has one or more arity specifiers (e.g., k). Each template rule expands into a set of concrete rules with different arities (e.g., $k=1$ until $k=99$). Rules with multiple arity specifiers are expanded recursively.

which tracks which variables are visible at each line and what their values are. For instance, the tuple `Value(@P, 0x8A, F, 99, 10, a, 2, int)` says that an `int` variable `a` had a value of 2 when function executed its 10th line during its 99th invocation. Next, we briefly explain each meta rule below.

The first nine meta rules describe inputs and outputs of a Trema program. The program reactively installs flow entries. When a switch does not know how to handle a flow, it caches and encapsulates its first packet in a `PacketIn` message to the controller. A Trema controller invokes a handler function called `packet_in` with two arguments `switch` and `packet` (`pi1-pi4`). The former identifies the switch which sent the `PacketIn`. The latter stores header fields of the encapsulated packet. A network operator specifies the policy by implementing the `packet_in` function. The function install flow entries by calling the built-in `send_flow_mod_add` function. Depending on the provided arguments, Trema may install either a “micro” flow entry that exactly match one flow or a “macro” flow entry that can control multiple flows using wildcard matches (`fe1-fe3`). In addition, the programmer can instruct the switch to handle the cached packet by calling `send_packet_out` (`fe4-fe5`).

The next four meta rules evaluate `if` clauses. An `if` clause performs two actions when its predicate is satisfied: a) it updates `ExecLine` to execute the first line in the `if` body, and b) it propagates variables in the current context to the `if` body by changing the line number of `Value` tuples (`cj1-cj2`). Otherwise, the clause skips the `if` body and executes the following line (`cj3-cj4`).

The next seven meta rules evaluate expressions. Expressions can come from constants (`e1`), local variables (`e2`), object attributes (`e3`), compositions of sub-expressions (`e4`), checking the existence of a hash table entry (`e5-e7`), or retrieving a hash table entry (`e8`).

The next seven meta rules execute functions. When a function is called (`fc1`), the program: a) copies the arguments in order for them to become visible to the callee (`fc2`); b) copies attributes of object arguments (`fc3`); and c) updates `ExecLine` to execute the first line in the function body (`fc4`). When the function returns (`fr1`),

the returned value (if any) is copied to the caller and the following line executes (`fr2-fr3`).

The next six meta rules describe objects. When the program creates an object, it allocates the object and calls the constructor for the class (`of1-of3`). When the object calls its member function, the program copies attributes of the object to the callee and executes the first line of the function body (`of4-of6`).

The final nine meta rules assign values. The program can assign values to a variable (`a1`), or to a hash table entry (`ht1`). Depending on whether the variable has been updated, its new or old value propagates to the next line to execute (`a2-a4`). Hash table entries propagate in a similar fashion (`ht2-ht4`).

B.3 Pyretic

Pyretic [37] is a domain-specific language for programming software-defined networks. It is embedded in Python. Its meta model describes a subset of the imperative features of Python, similar to that of Ruby. The meta rules in Figure 14 and Figure 15 are analogous to rules in the Trema model, therefore we do not discuss them in detail. We focus on the NetCore syntax (from Figure 4 in [37]), which are encoded by rules in Figure 16.

NetCore supports several types of static policies: a primitive action forwards, drops, floods, or modifies all incoming traffic; a restricted policy $P[C]$ applies the policy C to a flow if it satisfies the predicate P ; a sequential policy $C1 \gg C2$ first process the flow using $C1$, directs the immediate result through $C2$, and return the final output; a parallel policy $C1 \mid C2$ applies $C1$ and $C2$ simultaneously to a flow and returns the union of the outputs. Note that programmers can recursively compose policies from sub-policies to specify complex packet processing pipelines.

The meta model of represent policy with the table `Policy(@P, B, Typ, Ln, Sub[], Act[])`. Each policy has a type of `Typ`, resides in the function `B`, and has a unique ID `Ln`. A policy may be composed from sub-policies, whose unique IDs are `Sub[]`. After a policy is executed, all its sub-policies are invoked. In addition, `Policy` maintains the IDs of all primitive actions

```

/* Processing PacketIn */
// Entering the "packet.in" handler
pi1 ExecLine(@P,B,SID,Ln) :- packetIn(k) (@C,Swi,SID,Fld[k],Val[k],Typ[k]), EntryLine(@P,B,Ln), B == packet.in.
// Creating the "packet" object
pi2 Expression(@P,B,SID,Ln,EID,Adr,Val,Typ) :-
    packetIn(k) (@C,Swi,SID,Fld[k],Val[k],Typ[k]), EntryLine(@P,B,Ln), B == packet.in, EID := packet,
    Adr := f.new(), Val := f.new(), Typ := Class.
// Creating attributes of the "packet" object
pi3 Value(@P,Adr',B,SID,Ln,Arg',Val',Typ'), ClassMap(@P,Val,Attr,Adr') :-
    packetIn(k) (@C,Swi,SID,Fld[k],Val[k],Typ[k]), EntryLine(@P,B,Ln), Adr' := f.new(), Arg := Fld[k],
    Attr := Fld(k), Val' := Val(k), Typ' := Typ(k), B == packet.in, Expression(@P,B,SID,Ln,EID,Adr,Val,Typ).

/* Installing flow entries */
// Installing a "micro" flow entry
fe1 flowEntryMicro(@P,SID,Prt) :-
    ExecLine(@P,B,SID,Ln'), Policy(@P,B,Typ,Ln,Sub[i],Act[j]), Value(@P,Adr,B,SID,Ln,Arg,Val,Typ'),
    Ln < 0, Arg == packet.@action, Prt := Val, Typ == Prim, Typ' == Fixnum..
fe2 flowEntry(k) (@P,Swi,SID,Fld[k],Val[k],Typ[k],Prt) :- flowEntryMicro(@P,SID,Prt),
    packetIn(k) (@P,Swi,SID,Fld[k],Val[k],Typ[k]).
// Installing a "macro" flow entry
fe3 flowEntry(k) (@P,Swi,SID,Fld[k],Val[k],Typ[k],Prt) :-
    FuncExec(k) (@P,B,SID,Ln,EID[k],B',Ln',Arg[k]), Expression(@P,B,SID,Ln,EID{k},Adr{k},Val{k},Typ{k}),
    B' == wildcard.helper, Swi := Vall, Prt := Val9.
// Sending a PacketOut message to handle the cached packet on the switch
fe4 packetOutMicro(@P,SID,Prt) :-
    ExecLine(@P,B,SID,Ln'), Policy(@P,B,Typ,Ln,Sub[i],Act[j]), Value(@P,Adr,B,SID,Ln,Arg,Val,Typ'),
    Ln < 0, Arg == packet.@action, Prt := Val, Typ == Prim, Typ' == Fixnum..
fe5 packetOutMicro(@P,SID,Prt) :-
    FuncExec(k) (@P,B,SID,Ln,EID[k],B',Ln',Arg[k]), Expression(@P,B,SID,Ln,EID{k},Adr{k},Val{k},Typ{k}),
    B' == wildcard.helper, Prt := Val9.
fe6 packetOut(k) (@P,Swi,SID,Fld[k],Val[k],Typ[k],Prt) :- packetOutMicro(@P,SID,Prt),
    packetIn(k) (@P,Swi,SID,Fld[k],Val[k],Typ[k]).

/* If clauses */
// Executing a if clause when its predicate is satisfied
cj1 ExecLine(@P,B,SID,Tln) :-
    IfClause(@P,B,Ln,EID,Tln,Fln), Expression(@P,B,SID,Ln,EID,Adr,Val,Typ), Val == 1, Typ := TrueClass.
cj2 Value(@P,Adr',B,SID,Tln,Arg',Val',Typ') :- Value(@P,Adr',B,SID,Ln,Arg',Val',Typ'),
    IfClause(@P,B,Ln,EID,Tln,Fln), Expression(@P,B,SID,Ln,EID,Adr,Val,Typ), Val == 1, Typ := TrueClass.
// Skipping a if clause when its predicate is not satisfied
cj3 ExecLine(@P,B,SID,Fln) :-
    IfClause(@P,B,Ln,EID,Tln,Fln), Expression(@P,B,SID,Ln,EID,Adr,Val,Typ), Val == 0, Typ := FalseClass.
cj4 Value(@P,Adr',B,SID,Fln,Arg',Val',Typ') :- Value(@P,Adr',B,SID,Ln,Arg',Val',Typ'),
    IfClause(@P,B,Ln,EID,Tln,Fln), Expression(@P,B,SID,Ln,EID,Adr,Val,Typ), Val == 0, Typ := FalseClass.

/* Expression */
// A constant derives an expression
e1 Expression(@P,B,SID,Ln,EID,Adr,Val,Typ) :-
    ExecLine(@P,B,SID,Ln), Constant(@P,B,Ln,CID,Val,Typ), f.hash(EID), Adr := f.new().
// A local variables derives an expression
e2 Expression(@P,B,SID,Ln,EID,Adr,Val,Typ) :-
    ExecLine(@P,B,SID,Ln), VarName(@P,B,Ln,Arg), Value(@P,Adr,B,SID,Ln,Arg,Val,Typ), EID := Arg, f.arg(Arg,0).
// An object attribute derives an expressions
e3 Expression(@P,B,SID,Ln,Arg,Adr',Val',Typ') :- Expression(@P,B,SID,Ln,EID,Adr,Val,Typ),
    AttributeOf(@P,B,Ln,EID,Attr), f.concat(Arg,EID,.,Attr), Value(@P,Adr',B,SID,Ln,Arg,Val',Typ'),
    Typ == Class, ClassMap(@P,Val,Attr,Adr'), f.arg(EID,0), f.arg(Attr,0).
// Compositions of sub-expressions
e4 Expression(@P,B,SID,Ln,EID,Adr,Val,Typ) :- Operator(@P,B,Ln,Opr,EID1,EID2),
    Expression(@P,B,SID,Ln,EID1,Adr1,Val1,Typ1), Expression(@P,B,SID,Ln,EID2,Adr2,Val2,Typ2), EID1 != EID2,
    Val := Vall Opr Val2, f.hash(EID), Adr := f.new(), f.match(Typ1, Typ2), Typ := f.type(Typ1, Typ2).
// Checking or retrieving a hash table entry derive expressions
e5 HashTableCount(@P,B,SID,Ln,Arg,Key,a.count<Val>) :- HashTableCheck(@P,B,SID,Ln,Arg,KID),
    Expression(@P,B,SID,Ln,KID,Adr',Val',Typ'), HashTableEntry(@P,B,SID,Ln,Arg,Key,Val,Typ), Key == Val'.
e6 Expression(@P,B,SID,Ln,EID,Adr,Val,Typ) :- HashTableCount(@P,B,SID,Ln,Arg,Key,N),
    N > 0, f.concat(EID,Key,in,Arg), Adr := f.new(), Val := True, Typ := TrueClass.
e7 Expression(@P,B,SID,Ln,EID,Adr,Val,Typ) :- HashTableCount(@P,B,SID,Ln,Arg,Key,N),
    N == 0, f.concat(EID,Key,in,Arg), Adr := f.new(), Val := False, Typ := FalseClass.
e8 Expression(@P,B,SID,Ln,EID,Adr,Val,Typ) :- HashTableGet(@P,B,Ln,Arg,KID),
    Expression(@P,B,SID,Ln,KID,Adr',Val',Typ'), HashTableEntry(@P,B,SID,Ln,Arg,Key,Val,Typ), Key == Val',
    Adr := f.new(), f.concat(EID,Arg,#,Key).

```

Figure 14: Meta rules for Pyretic [37] (part 1).

```

/* Function call */
// Triggering a function call
fc1 FuncExec(k) (@P,B,SID,Ln,EID[k],B',Ln',Arg'[k]) :-
    ExecLine(@P,B,SID,Ln), FuncDecl(k) (@P,B',Arg'[k],Ln'), FuncCall(k) (@P,B,Ln,B',EID[k]).
// Copying arguments to the callee
fc2 Value(@P,Adr',B',SID,Ln',Arg',Val,Typ) :- FuncExec(k) (@P,B,SID,Ln,EID[k],B',Ln',Arg'[k]),
    Expression(@P,B,SID,Ln,EID,Adr,Val,Typ), EID == EID(k), Adr' := f_new(), Arg' := Arg'(k).
// Copying attributes of object arguments to the callee
fc3 Value(@P,Adr'',B',SID,Ln',Arg'',Val'',Typ'') :- FuncExec(k) (@P,B,SID,Ln,EID[k],B',Ln',Arg'[k]),
    Expression(@P,B,SID,Ln,EID,Adr,Val,Typ), EID == EID(k), ClassMap(@P,Val,Attr,Adr''),
    Typ == Class, f_concat(Arg'',Arg'(k),.,Attr), Value(@P,Adr'',B,SID,Ln,Arg'',Val'',Typ'').
// Executing the function body
fc4 ExecLine(@P,B',SID,Ln') :- FuncExec(k) (@P,B,SID,Ln,EID[k],B',Ln',Arg'[k]).

/* Function return */
// Triggering a function return
fr1 FuncRet(@P,B',SID,Ln',EID') :- ExecLine(@P,B',SID,Ln'), Return(@P,B',Ln',EID').
// Copying the return value to the caller
fr2 Expression(@P,B,SID,Ln,EID,Adr,Val,Typ) :-
    FuncRet(@P,B',SID,Ln',EID'), FuncExec(k) (@P,B,SID,Ln,EID[k],B',Ln',Arg'[k]), Adr := f_new(),
    Expression(@P,B',SID,Ln',EID',Adr',Val',Typ'), Ln' > 0, EID := EID', Val := Val', Typ := Typ'.
// Returning to the caller
fr3 ExecLine(@P,B,SID,Ln'') :- FuncRet(@P,B',SID,Ln',EID'),
    FuncExec(k) (@P,B,SID,Ln,EID[k],B',Ln',Arg'[k]), NextLine(@P,B,Ln,Ln''), Ln != Ln''.

/* Objects */
// Calling the constructor
of1 FuncCallObject(@P,B,SID,Ln,B',Ln',EID[k],Adr,Val,Typ,Ini) :-
    ExecLine(@P,B,SID,Ln), ObjectNew(@P,B,Ln,Typ,B',Ln',EID[k]), Adr := f_new(), Val := f_new(), Ini := True.
// Allocating attributes
of2 Value(@P,Adr',B',SID,Ln',Arg',Val',Typ'), ClassMap(@P,Val,Attr,Adr') :-
    FuncCallObject(@P,B,SID,Ln,B',Ln',EID[k],Adr,Val,Typ,Ini), ObjectDecl(@P,Typ,Attrs,Typs), Adr' := f_new(),
    Arg' := Attr, Val' := Null, Typ' := Typs(k), Attr := Attrs(k), Ini == True.
// Allocating the object itself
of3 Value(@P,Adr',B',SID,Ln',Arg',Val',Typ'), ClassMap(@P,Val,Attr,Adr') :-
    FuncCallObject(@P,B,SID,Ln,B',Ln',EID[k],Adr,Val,Typ,Ini), Adr' := f_new(), Ln' := 1, Arg' := 'self',
    Val' := Adr, Typ' := Ref, Ini == True.
// Calling a member function
of4 FuncCallObject(@P,B,SID,Ln,B',Ln',EID[k],Adr,Val,Typ,Ini) :-
    Expression(@P,B,SID,Ln,EID,Adr,Val,Typ), FunctionOf(@P,B,Ln,EID,B',Ln',EID[k]), Typ == Ref, Ini := False.
// Copying attributes to a member function call and starting its execution
of5 Value(@P,Adr',B',SID,Ln',Arg',Val',Typ') :- FuncCallObject(@P,B,SID,Ln,B',Ln',EID[k],Adr,Val,Typ,Ini),
    ObjectDecl(@P,Typ,Attrs,Typs), Value(@P,Adr,B,SID,Ln,Arg,Val,Typ), ClassMap(@P,Val,Attr,Adr),
    Adr' := Adr, Arg' := Attr, Val' := Val, Typ' := Typ, Attr == Attrs(k), Ini == False.
of6 FuncCall(k) (@P,B,Ln,B',EID[k]) :- FuncCallObject(@P,B,SID,Ln,B',Ln',EID[k],Adr,Val,Typ,Ini).

/* Assignment */
// Assigning value to a variable
a1 Value(@P,Adr,B,SID,Ln',Arg,Val',Typ), ExecLine(@P,B,SID,Ln') :-
    Expression(@P,B,SID,Ln,Arg,Adr,Val,Typ), f_arg(Arg,1), Assignment(@P,B,Ln,Arg,EID),
    Expression(@P,B,SID,Ln,EID,Adr',Val',Typ), NextLine(@P,B,Ln,Ln'), Ln != Ln'.
// Propagating unchanged values
a2 AssignmentCount(@P,B,Ln,Arg,a_count<EID>) :- Assignment(@P,B,Ln,Arg,EID).
a3 NoAssignment(@P,B,Ln,Arg) :- AssignmentCount(@P,B,Ln,Arg,N), N == 0.
a4 Value(@P,Adr,B,SID,Ln',Arg,Val,Typ) :- Value(@P,Adr,B,SID,Ln,Arg,Val,Typ),
    NoAssignment(@P,B,Ln,Arg), NextLine(@P,B,Ln,Ln'), Ln != Ln', f_arg(Arg,1).

/* Hash table */
// Modifying a hash table entry
ht1 HashTableEntry(@P,B,SID,Ln,Arg,Key,Val,Typ), ExecLine(@P,B,SID,Ln') :- HashTableSet(@P,B,Ln,Arg,KID,VID),
    Expression(@P,B,SID,Ln,KID,Adr',Val',Typ'), Expression(@P,B,SID,Ln,VID,Adr'',Val'',Typ''),
    Key := Val', Val := Val'', Typ := Typ'', NextLine(@P,B,Ln,Ln'), Ln != Ln'.
// Propagating unchanged values
ht2 HashTableCount(@P,B,Ln,Arg,a_count<KID>) :- HashTableSet(@P,B,Ln,Arg,KID,VID).
ht3 NoHashTableSet(@P,B,SID,Ln,Arg,Key) :- HashTableCount(@P,B,Ln,Arg,N), N == 0.
ht4 HashTableEntry(@P,B,SID,Ln',Arg,Key,Val,Typ) :- HashTableEntry(@P,B,SID,Ln,Arg,Key,Val,Typ),
    NoHashTableSet(@P,B,Ln,Arg,Key), NextLine(@P,B,Ln,Ln').

```

Figure 15: Meta rules for Pyretic [37] (part 2).


```

/* Primitive actions */
a1 Value(@P,Adr',B,SID,Ln',Arg,Val',Typ') :- ExecLine(@P,B,SID,Ln), Ln' := Sub(i),
    Policy(@P,B,Typ,Ln,Sub[i],Act[j]), Expression(@P,B,SID,Ln,EID,Adr',Val',Typ'), Typ == Prim,
    ConstantAction(@P,B,Ln,EID), Arg == packet.@action.
a2 Value(@P,Adr',B,SID,Ln',Arg,Val',Typ') :- ExecLine(@P,B,SID,Ln), Ln' := Sub(i),
    Policy(@P,B,Typ,Ln,Sub[i],Act[j]), Expression(@P,B,SID,Ln,EID,Adr',Val',Typ'), Typ == Prim,
    ModifyAction(@P,B,Fld,Ln,EID), Value(@P,Adr,B,SID,Ln,Arg,Val,Typ'), f_concat(Arg,packet,..,Fld).
a3 ExecLine(@P,B,SID,Sub) :- ExecLine(@P,B,SID,Ln), Policy(@P,B,Typ,Ln,Sub,Act), Typ == Prim.
a4 Value(@P,Adr,B,SID,Ln',Arg,Val,Typ) :- Value(@P,Adr,B,SID,Ln,Arg,Val,Typ),
    NoAssignment(@P,B,Ln,Arg), Policy(@P,B,Typ,Ln,Sub[i],Act[j]), Ln' := Sub(i).

/* Restricted policies */
r1 PredicateValue(@P,B,SID,Ln,Val) :-
    FieldPredicate(@P,B,Ln,Fld,VID), Value(@P,Adr',B,SID,Ln,Arg,Val',Typ'), f_concat(Arg,packet,..,Fld),
    Expression(@P,B,SID,Ln,VID,Adr'',Val'',Typ''), f_match(Typ', Typ''), Val := Val' == Val''.
r2 PredicateValue(@P,B,SID,Ln,Val) :- ExecLine(@P,B,SID,Ln), ConstantPredicate(@P,B,Ln,Typ,Val).
r3 ExecLine(@P,B,SID,Ln') :- ExecLine(@P,B,SID,Ln), Ln' := Sub(i),
    Policy(@P,B,Typ,Ln,Sub[i],Act[j]), PredicateValue(@P,B,SID,Ln,Val), Val == true, Typ == Rest.

/* Parallel composition */
p1 Policy(@P,B,Typ,Ln,Sub[2],Act'[k'],Act''[k'']) :- Parallel(@P,B,Ln,Ln',Ln''), Typ := Para,
    Policy(@P,B,Typ',Ln',Sub'[k'],Act'[k']), Policy(@P,B,Typ'',Ln'',Sub''[k''],Act''[k'']),
    Sub[1] := Ln', Sub[2] := Ln''.
p2 ExecLine(@P,B,SID,Ln') :-
    ExecLine(@P,B,SID,Ln), Policy(@P,B,Typ,Ln,Sub[i],Act[j]), Ln' := Sub(i), Typ == Para.

/* Sequential composition */
s1 Policy(k) (@P,B,Typ,Ln',Sub'[k'],Act''[k'']) :- Sequential(@P,B,Ln',Ln''), Typ := Sequ,
    Policy(@P,B,Typ',Ln',Sub'[k'],Act'[k']), Policy(@P,B,Typ'',Ln'',Sub''[k''],Act''[k'']).
s2 Policy(@P,B,Typ,Ln,Sub,Ln'') :- Sequential(@P,B,Ln',Ln''),
    Policy(@P,B,Typ,Ln,Sub,Act), Typ == Prim, Policy(@P,B,Typ',Ln',Sub'[k'],Act'[k']), Ln == Act'(k').

```

Figure 16: Meta rules for Pyretic [37] (part 3).

from which it is recursively composed ($Act[]$). (We will come back to this shortly when discussing sequential policies.)

Consider a policy $P1$ that forwards all HTTP traffic from the host 1.2.3.4 towards two ports: `match(dstport=80)[match(srcip=1.2.3.4)[fwd(1)|fwd(2)]]`. Note that $P1$ is a restricted policy composed from a predicate that matches HTTP traffic and a sub-policy $P2$. $P2$ is in turn composed from a predicate that matches the traffic source to 1.2.3.4 and a sequential composition of two primitive actions `fwd(1)` and `fwd(2)` (denoted as $P3$ and $P4$). $P1$ will generate a meta tuple `Policy(@P,B,Rest,P1,[P2],[P3,P4])`. Next, we briefly explain each meta rule below.

The first four rules evaluate primitive actions. Depending on the associated action, the policy can change the output port or modify a header field of incoming flows (a1–a2). The flow is then forwarded to sub-policies or compiles to flow entries on the switch if no sub-policies exist (a3–a4).

The next three rules evaluate restricted policies. Each restricted policy filters incoming traffic with a predicate. A predicate can restrict the value of a header field or apply a constant filter such as “no packets” (r1–r2). Note that a restricted policy does not redirect or modify any incoming flow itself. Instead, it applies sub-policies on flows that satisfy the predicate (r3).

The final four rules describe compositions. A parallel policy derives from two sub-policies and a parallel

operator (p1). For instance, consider $P3 \mid P4$ from the previous example. The parallel policy P' is `Policy(@P,B,Para,P',[P3,P4],[P3,P4])`. Note that when P' is invoked, $P3$ and $P4$ will execute in parallel (p2). A sequential operator chains two sub-policies into a sequential policy (s1). Instead of generating flow entries after evaluating the first policy, the program applies the second policy to the processed flow (s1). Note that in order to support this, the meta model maintains all primitive actions in each policy ($Act[]$). For example, suppose the programmer writes $P3 \gg P4$. Before the composition, $P3$ will compile a flow entry that forwards packets to port 1 ($P3=Policy(@P,B,Prim,P3,-1,P3)$). The sequential operator causes $P4$ to become a sub-policy of $P3$, such that $P4$ will process the output of $P3$ ($P3=Policy(@P,B,Prim,P3,P4,P3)$).

C Helper functions

Table 5 describes all helper functions used in the algorithms from Figure 5 and Figure 17. We also briefly explain the more complicated helper functions below.

In the repair extraction algorithm from Figure 5, `SYMBOLICPROPAGATE` changes a subset of base events in a provenance graph of τ and return all constraints such that the derivation of τ still holds. The procedure: a) replaces attributes in base events with symbolic variables, b) copies the symbolic variables to the head if the replaced attribute also appears in the

Function	Input	Description
BASETUPLECOMBS	A provenance graph P .	Return all combinations of base events in P such that the total costs of each combination is less than a cutoff. The returned combinations are sorted in cost order.
BASETUPLES	A provenance graph P .	Return all base events in P .
CHANGETUPLE	A set of assignments A . A base event τ .	Change τ to τ' by replacing all variables in τ with their concrete values in A . If the syntax remains valid after the change, return $\tau \rightarrow \tau'$. Return \emptyset otherwise.
CONSTRAINTPOOL	A provenance graph P .	Return the set of constraints associated with P .
DELETETUPLE	A base event τ .	If the syntax remains valid after deleting τ , return $-\tau$. Return \emptyset otherwise.
EXISTINGTUPLE	An event τ .	Return true iff the event type of τ and is positive.
FORKWITHRULE	A provenance graph P . An event τ in P . A derivation rule r that can derive τ .	Expand event τ in P . Fork a provenance graph for each possible derivation. Return all forked provenance graphs. More detailed explanation in Appendix C.
MISSINGTUPLE	An event τ .	Return true iff the event type of τ and is negative.
ROOTTUPLE	A provenance graph P .	Return the root of P .
RULES	An event τ .	All meta rules that can derive τ .
SATASSIGNMENT	A set of constraints C .	Solve C . Return a valid assignment of all variables.
SYMBOLICPROPAGATE	A positive provenance graph P . A combination of base events T_i .	Change each base event in T_i symbolically. Propagate the changes bottom-up in P . Collect all constraints that is required for a) the derivations in P to hold and b) the root of P to satisfy the operator's query. Return the set of constraints collected. More detailed explanation in Appendix C.
UNSATASSIGNMENT	A set of constraints C .	Solve $!C$. Return a valid assignment of all variables.

Table 5: A description of helper functions used in the algorithms from Figure 5 and Figure 17.

head tuple, c) collects constraints such that the derivation still holds, and d) recursively perform this process bottom-up until reaching the root. For instance, suppose the algorithm must remove a faulty flow entry, which was generated via a μ Dlog rule `r7` with a selection predicate `Swi == 2`. The repair extracting algorithm will attempt to change the constant `2` as one possible repair. At this point, `SYMBOLICPROPAGATE` is invoked: a) the procedure replaces the constant with a symbolic value, such that `Const(@C, r7, 0x9, 2)` becomes `Const(@C, r7, 0x9, V)`; b) the constant derived, via meta rule `e1`, an expression, which becomes `Expr(@C, r7, *, 0x9, V)`; c) the expression derived, via meta rule `s1`, a selection predicate, which becomes `Sel(@C, r7, 3, 0x9, V == 2)`; d) the selection predicate derived the flow entry via meta rule `h2`, and in order for it to trigger, the constraint `(V == 2) == True` must hold; note that we collect this constraint from the `Val == True` predicate of the meta rule `h2`.

In the repair exploration algorithm from Figure 17, `FORKWITHRULE` attempts to derive an event τ by expanding it to child vertexes. It accepts a derivation rule r and fork a provenance graph for each possible way of expanding τ using r . For instance, suppose the algorithm needs to make a selection predicate `Swi == 2` hold in a μ Dlog program. At this point, the algorithm invokes `FORKWITHRULE` to derive the corresponding `Sel` meta tuple using the meta rule `s1` (from Figure 4). A naïve way is to recursively derive all its predicates. However, an optimization can produce a repair with a smaller search space: the procedure checks whether a subset of preconditions already hold during the original execution and only attempts to derive the missing predicates. Note

that meta provenance tends to make small changes to the program, therefore syntactic elements or states are likely to be preserved in an re-execution. In our example, the procedure checks when an operator and its right-hand expression existed but a matching left-hand expression was missing. At some point during the original execution, there existed a `==` operator and a `Expr` derived from the constant `2`; as a result, we add two existing tuples `Oper` and `Expr` as children of `Sel`; however, the `Swi` expression did not have a value of `2`; therefore, a missing child vertex `Expr` is added for later exploration. `FORKWITHRULE` enumerates all such cases and forks one provenance graph for each.

D Properties

In this section, we discuss properties of repairs generated using meta provenance for NDlog. Figure 17 shows the algorithm. The operator specifies a symptom event τ , and the algorithm returns a list of repairs R . When the symptom event τ is positive, repairs in R make τ disappear: Lines 25 builds a positive meta provenance tree of τ , using the graph construction algorithm from [54]; Line 26 extracts repairs from the positive tree (using the function from Figure 5). When the symptom τ is a missing event, repairs in R make τ appear. The algorithm stores negative meta provenance trees in a priority queue Q , where the top tree has the lowest cost. This allows the algorithm to explore and output repair candidates in cost order (Section 3.5): Lines 13-20 fork a partial tree, expand a vertex v in the forked tree (increase its cost if v is a program change), and push all expanded trees into Q ;

```

1: function FINDREPAIRS( $\tau$ )
2:   if MISSINGTUPLE( $\tau$ ) then
3:     // use a priority queue  $Q$  to store meta provenance trees
4:      $Q \leftarrow \tau, R \leftarrow \emptyset$ 
5:     while  $Q \neq \emptyset$  do
6:       // check the lowest-cost meta provenance trees
7:        $P \leftarrow Q.TOP()$ 
8:        $Q.REMOVE(P)$ 
9:       if  $P.TODOS = \emptyset$  then
10:        // extract a repair from a completed tree and output
11:         $R \leftarrow R \cup GENERATEREPAIRCANDIDATES(P)$ 
12:       else
13:        // choose one vertex  $\tau_e$  in the partial tree
14:         $\tau_e \leftarrow P.TODOS.FIRST()$ 
15:         $P.TODOS.REMOVE(v)$ 
16:        // iterate all meta rules that can derive  $\tau_e$ 
17:        for  $\forall r \in RULES(\tau_e)$  do
18:          // fork the tree by expanding  $\tau_e$  with meta rule  $r$ 
19:          for  $\forall P_i \in FORKWITHRULE(P, \tau_e, r)$  do
20:             $Q.PUSH(P_i)$ 
21:       // return repairs to make  $\tau$  appear
22:       RETURN  $R$ 
23:   else if EXISTINGTUPLE( $\tau$ ) then
24:     // query the positive meta provenance tree of  $\tau$ 
25:      $P \leftarrow QUERY(\tau)$ 
26:     // extract repairs to make  $\tau$  disappear
27:     RETURN  $GENERATEREPAIRCANDIDATES(P)$ 

```

Figure 17: Algorithm for exploring repair candidates in cost order. For a description of the helper functions, please see Table 5.

Lines 10-11 accept a completed tree from Q and extract a repair candidate that makes τ appear.

The algorithm may keep expanding vertexes in a partial tree without ever making a program change. Such a tree stays at the top of Q . As a result, the algorithm cannot extract repairs from complete (but more expensive) trees in Q . To handle this, we can add a (possibly very small) cost to expanding each vertex, even if it does not represent a program change. This ensures that any viable repair with a finite cost will be output eventually.

The prototype does not have the completeness property. Because it does not actually output the type of repairs mentioned in the ensuing proof. Such repairs are too restrictive and are unlikely to be useful in practice. The algorithm in Figure 5 can be easily extended to support this case.

Property (Optimality): *Repair candidates are generated in cost order. Consider a list of repairs $R \leftarrow \text{FINDREPAIRS}(\tau)$, $R[i].cost \leq R[j].cost$ when $i < j$.*

Proof.

We consider two cases: a) the symptom τ is an existing event, and b) the symptom τ is a missing event.

Case a. Lines 24-27 are executed. Note that the algorithm generates a single meta provenance tree. The result is optimal as long as $GENERATEREPAIRCANDIDATES$ returns a sorted list of repairs. This is guaranteed because $BASETUPLECOMBINATIONS$ returns base tuple combinations in cost order (Table 5).

Case b. Lines 3-22 are executed. The result is optimal by construction: the algorithm only extracts a repair $R[i]$

when $R[i]$ is the top of Q ; any remaining provenance tree P_r in Q has a cost that is no less than $R[i]$; a future repair $R[j]$ must be extracted from a complete P_r or a tree expanded from a partial P_r ; therefore, the cost of $R[j]$ is the cost of P_r plus what additional program changes cost (if any); the sum is no less than the cost of $R[i]$. \square

Property (Completeness): *Given a symptom τ , the algorithm finds at least one working repair.*

Proof.

We consider two cases: a) the symptom τ is an existing event, and b) the symptom τ is a missing event.

Case a. The algorithm can eventually look at all the rules that are being used to derive τ in the current execution, and add a condition that prevents τ , and only τ , from being derived without causing any other changes¹. For example, to remove a positive event $\text{Bar}(@3, 5)$, the rule $\text{Bar}(@A, B) : -\text{Foo}(@A, B), A > 2$ becomes $\text{Bar}(@A, B) : -\text{Foo}(@A, B), A > 2, A \neq 3 \mid \mid B \neq 5$.

There is a concern that a repair may disable one particular derivation of an undesired tuple while enabling an alternative derivation of the same tuple. For instance, deleting a $X(5)$ tuple that is being used to derive τ could trigger some other rule, perhaps one with condition $!X(5)$, that now also derives a τ . However, notice that the repair in the above argument only removes an derivation of τ , and makes no other changes. If the absence of τ would trigger a cascade of rules that made it reappear, the system as a whole would oscillate, since that rule would effectively depend on a negation of its own rule head.

Case b. The algorithm will eventually add a rule that derives exactly τ without causing any other changes. For example, to derive a tuple $\text{Bar}(@A, B)$, one repair will add a rule $\text{Bar}(@A, B) : -\text{Foo}(@X), X == 1, A := 2, B := 3$, where $\text{Foo}(@1)$ is an event that happened during that time. If no such event exist in the original execution, the algorithm will insert a base event.

Note that the algorithm can eventually generate the above repair. Suppose that Bar is a state and Foo is a message. To make $\text{Bar}(@2, 3)$ appear, the algorithm will, at some point, add the rule head $\text{Bar}(@A, B)$ (using meta rules h4-h5 from Figure 11); while recursively expanding the HeadValue predicates of h5, assignments $A := 2$ and $B := 3$ are created (a1 and e2); while recursively expanding the ConstraintMatch predicate of h5, the selection predicate $X == 1$ is created (h6-h7); finally, the algorithm adds the tuple predicate $\text{Foo}(@X)$ while expanding the X expression in $X == 1$ (e1, j4, and p1). \square

	Repair candidate (Accepted?)	KS-test
A	Manually installing a flow entry (✓)	0.00086
B	Changing Sip<6 in r1 to Sip<7 (✓)	0.00086
C	Changing Sip<6 in r1 to Sip<=6 (✓)	0.00086
D	Changing Prt :=16 in r2 to Prt :=17 (X)	0.00257
E	Changing Sip<6 in r1 to Sip<99 (X)	0.00257
F	Changing Sip<6 in r1 to Sip<16 (X)	0.00257
G	Changing Sip<6 in r1 to Sip<2009 (X)	0.00257
H	Deleting Sip<6 in r1 (X)	0.00257
I	Deleting Sip<6 and Ipt<16 in r1 (X)	0.00257
J	Changing Sip<6 in r1 to Dpt<6 (X)	0.00257
K	Changing Sip<6 in r1 to Spt<6 (X)	0.00257
L	Changing Sip<6 in r1 to Tmt<6 (X)	0.00257

(a) Q2

	Repair candidate (Accepted?)	KS-test
A	Manually installing a flow entry (✓)	0.00085
B	Changing Sip>3 in r5 to Sip>1 (✓)	0.00085
C	Changing Sip>3 in r5 to Sip>0 (X)	0.00171
D	Changing Sip>3 in r5 to Sip>2 (✓)	0.00085
E	Deleting Dip==1 and Swi==2001 in e1h1 (X)	0.01886
F	Deleting Sip>3 and Swi==2003 in r5 (X)	0.00213
G	Deleting Sip>3 in r5 (X)	0.00171
H	Changing Sip>3 in r5 to Sip<3 (X)	0.00689
I	Changing Sip>3 in r5 to Swi>3 (X)	0.00171
J	Changing Sip>3 in r5 to Dip>3 (X)	0.00171
K	Changing Sip>3 in r5 to Dmc>3 (X)	0.00171

(b) Q3

	Repair candidate (Accepted?)	KS-test
A	Manually sending a packetOut message (✓)	0.02693
B	Changing the head of e2po to packetOut (@C, ..., Sip, Dip, Spt, Dpt, ...) (X)	0.34439
C	Changing the head of r5 to packetOut (@C, ..., Dip, Sip, Spt, Dpt, ...) (X)	0.38886
D	Changing the head of e2 to packetOut (@C, ..., Sip, Dip, Spt, Dpt, ...) (X)	0.38886
E	Changing the head of r5 to packetOut (@C, ..., Dip, Sip, Dpt, Spt, ...) (X)	0.38886
F	Changing the head of e2po to packetOut (@C, ..., Sip, Dip, Dpt, Spt, ...) (X)	0.34439
G	Changing the head of e2 to packetOut (@C, ..., Sip, Dip, Dpt, Spt, ...) (X)	0.38886
H	Copying e2 and replacing head with packetOut (@C, ..., Sip, Dip, Dpt, Spt, ...) (X)	0.20223
I	Copying e2po and replacing head with packetOut (@C, ..., Sip, Dip, Dpt, Spt, ...) (X)	0.20223
J	Copying r5 and replacing head with packetOut (@C, ..., Dip, Sip, Dpt, Spt, ...) (✓)	0.02693
K	Copying e2 and replacing head with packetOut (@C, ..., Sip, Dip, Spt, Dpt, ...) (X)	0.20223
L	Copying r5 and replacing head with packetOut (@C, ..., Dip, Sip, Spt, Dpt, ...) (✓)	0.02693
M	Copying e2po and replacing head with packetOut (@C, ..., Sip, Dip, Spt, Dpt, ...) (X)	0.20223

(c) Q4

	Repair candidate (Accepted?)	KS-test
A	Changing Sip' :=* in f2 to Sip' :=Sip (✓)	0.00007
B	Changing Sip' :=* in f2 to Sip' :=Dip (X)	0.00009
C	Changing Dip' :=* in f2 to Dip' :=Sip (X)	0.00009
D	Changing Dmc' :=Dmc in f2 to Dmc' :=Smc (X)	0.00009
E	Changing Ipt' :=Ipt in f2 to Ipt' :=Prt (X)	0.00009
F	Changing Smc' :=* in f2 to Smc' :=Dmc (X)	0.00009
G	Changing Smc' :=* in f2 to Smc' :=Smc (✓)	0.00007
H	Changing Smc' :=* in f2 to Smc' :=Dmc' (X)	0.00009
I	Manually installing a learning table entry (✓)	0.00007

(d) Q5

Table 6: Candidate repairs generated by meta provenance for scenarios Q2-Q5, which are then filtered by a KS-test.

E Scenarios

Table 6 shows the repair candidates returned for Q2-Q5. In Q2, a forwarding policy was too restrictive and dropped packets from one host. All repair candidates are effective as they cause packets from the blocked client to go through. However, candidates D-L are too general and misroute flows that were handled correctly by the original program. In Q3, the operator updated the load-balancer program and offloaded a few clients to a backup route. However, a stale firewall policy on that route dropped all such requests. All repair candidates are effective as the fixed firewall always allow at least of some of the offloaded requests. Some candidates have undesirable side effects: the firewall becomes too permissive (C, F, G, I, J, K); all hosts connected to a cer-

tain port receive additional traffic (E, F); legitimate traffic are blocked (H). In Q4, the controller program failed to instruct a switch to forward the first packet in each incoming flow. All repair candidates cause the switch to forward the first packet. However, some cause side effects such as significant increases of controller traffic (C, D, E, G) or additional flows at endhosts (D, G, H, I, K, M). In Q5, a switch never learned about the existence of certain hosts because the MAC learning program only match packets based on the incoming port and the destination IP. Some repair candidates did not fix the problem (B, C, D, E, F, H). Candidate I manually configures an entry in the learning table on the controller. Candidates A and G fix the problem by adding a matching field on source IP or source MAC, which are probably the repairs which an operator would have chosen.