



University of Pennsylvania  
ScholarlyCommons

---

Departmental Papers (CIS)

Department of Computer & Information Science

---

July 2001

# Reconstruction of Linearly Parameterized Models from Single Images with a Camera of Unknown Focal Length

David Jelinek  
*University of Pennsylvania*

Camillo J. Taylor  
*University of Pennsylvania, [cjtaylor@cis.upenn.edu](mailto:cjtaylor@cis.upenn.edu)*

Follow this and additional works at: [http://repository.upenn.edu/cis\\_papers](http://repository.upenn.edu/cis_papers)

---

## Recommended Citation

David Jelinek and Camillo J. Taylor, "Reconstruction of Linearly Parameterized Models from Single Images with a Camera of Unknown Focal Length", . July 2001.

Copyright 2001 IEEE. Reprinted from *IEEE Transactions on Pattern Analysis and Machine Intelligence*, Volume 23, Issue 7, July 2001, pages 767-773.  
Publisher URL: <http://ieeexplore.ieee.org/xpl/tocresult.jsp?i sNumber=20256&puNumber=34>

This material is posted here with permission of the IEEE. Such permission of the IEEE does not in any way imply IEEE endorsement of any of the University of Pennsylvania's products or services. Internal or personal use of this material is permitted. However, permission to reprint/republish this material for advertising or promotional purposes or for creating new collective works for resale or redistribution must be obtained from the IEEE by writing to [pubs-permissions@ieee.org](mailto:pubs-permissions@ieee.org). By choosing to view this document, you agree to all provisions of the copyright laws protecting it.

This paper is posted at ScholarlyCommons. [http://repository.upenn.edu/cis\\_papers/50](http://repository.upenn.edu/cis_papers/50)  
For more information, please contact [libraryrepository@pobox.upenn.edu](mailto:libraryrepository@pobox.upenn.edu).

---

# Reconstruction of Linearly Parameterized Models from Single Images with a Camera of Unknown Focal Length

## Abstract

This paper deals with the problem of recovering the dimensions of an object and its pose from a single image acquired with a camera of unknown focal length. It is assumed that the object in question can be modeled as a polyhedron where the coordinates of the vertices can be expressed as a linear function of a dimension vector,  $\lambda$ . The reconstruction program takes as input, a set of correspondences between features in the model and features in the image. From this information, the program determines an appropriate projection model for the camera (scaled orthographic or perspective), the dimensions of the object, its pose relative to the camera and, in the case of perspective projection, the focal length of the camera. This paper describes how the reconstruction problem can be framed as an optimization over a compact set with low dimension - no more than four. This optimization problem can be solved efficiently by coupling standard nonlinear optimization techniques with a multistart method which generates multiple starting points for the optimizer by sampling the parameter space uniformly. The result is an efficient, reliable solution system that does not require initial estimates for any of the parameters being estimated.

## Keywords

3D reconstruction, uncalibrated imagery, numerical optimization

## Comments

Copyright 2001 IEEE. Reprinted from *IEEE Transactions on Pattern Analysis and Machine Intelligence*, Volume 23, Issue 7, July 2001, pages 767-773.

Publisher URL: <http://ieeexplore.ieee.org/xpl/tocresult.jsp?isNumber=20256&puNumber=34>

This material is posted here with permission of the IEEE. Such permission of the IEEE does not in any way imply IEEE endorsement of any of the University of Pennsylvania's products or services. Internal or personal use of this material is permitted. However, permission to reprint/republish this material for advertising or promotional purposes or for creating new collective works for resale or redistribution must be obtained from the IEEE by writing to [pubs-permissions@ieee.org](mailto:pubs-permissions@ieee.org). By choosing to view this document, you agree to all provisions of the copyright laws protecting it.

# Reconstruction of Linearly Parameterized Models from Single Images with a Camera of Unknown Focal Length

David Jelinek and Camillo J. Taylor, *Member, IEEE*

**Abstract**—This paper deals with the problem of recovering the dimensions of an object and its pose from a single image acquired with a camera of unknown focal length. It is assumed that the object in question can be modeled as a polyhedron where the coordinates of the vertices can be expressed as a linear function of a dimension vector,  $\lambda$ . The reconstruction program takes as input, a set of correspondences between features in the model and features in the image. From this information, the program determines an appropriate projection model for the camera (scaled orthographic or perspective), the dimensions of the object, its pose relative to the camera and, in the case of perspective projection, the focal length of the camera. This paper describes how the reconstruction problem can be framed as an optimization over a compact set with low dimension—no more than four. This optimization problem can be solved efficiently by coupling standard nonlinear optimization techniques with a multistart method which generates multiple starting points for the optimizer by sampling the parameter space uniformly. The result is an efficient, reliable solution system that does not require initial estimates for any of the parameters being estimated.

**Index Terms**—3D reconstruction, uncalibrated imagery, numerical optimization.

## 1 INTRODUCTION

THIS paper deals with the problem of recovering the dimensions of an object and its pose from a single image acquired with a camera of unknown focal length. It is assumed that the object in question can be modeled as a polyhedron where the coordinates of the vertices can be expressed as a linear function of a dimension vector,  $\lambda$ . That is, if  $\lambda$  is an  $n \times 1$  vector, then there are a set of  $3 \times n$  matrices,  $K_1, K_2, \dots, K_m$ , where the position of the  $i$ th vertex is given by  $K_i \lambda$ . Consider, for example, the model shown in Fig. 1. For this model, the following expressions detail how the coordinates of the vertices labeled,  $P_1$  and  $P_2$  can be expressed as linear functions of the dimension vector  $\lambda = (LWHh)^t$ .

$$\begin{aligned} P_1 &= \begin{pmatrix} -L/2 \\ 0 \\ (H+h) \end{pmatrix} = \begin{pmatrix} -0.5 & 0 & 0 & 0 \\ 0 & 0 & 0 & 0 \\ 0 & 0 & 1 & 1 \end{pmatrix} \lambda; \\ P_2 &= \begin{pmatrix} L/2 \\ -W/2 \\ H \end{pmatrix} = \begin{pmatrix} 0.5 & 0 & 0 & 0 \\ 0 & -0.5 & 0 & 0 \\ 0 & 0 & 1 & 0 \end{pmatrix} \lambda. \end{aligned} \quad (1)$$

In most situations, the entries in the parameter vector,  $\lambda$ , will refer to dimensions that are only meaningful when positive. Note that, generally speaking, any polyhedron can be expressed by this model simply by choosing  $\lambda$  to be a vector of dimension  $3N$ , where  $N$  is the number of vertices in the model. In practice, most man-made objects, such as buildings, contain symmetries which allow the model to be expressed with far fewer parameters. For the model shown in Fig. 1, the positions of 10 vertices can be characterized using only four parameters. This makes it possible to

• The authors are with the GRASP Laboratory, CIS Department, University of Pennsylvania, 3401 Walnut Street, Room 329C, Philadelphia, PA, 19104-6228.

E-mail: davidj2@seas.upenn.edu and cjtaylor@central.cis.upenn.edu.

Manuscript received 4 Aug. 1999; revised 16 Aug. 2000; accepted 23 Aug. 2000.

Recommended for acceptance by R. Kumar.

For information on obtaining reprints of this article, please send e-mail to: tpami@computer.org, and reference IEEECS Log Number 110360.

recover the model dimensions from measurements in a single image.

The input to the reconstruction program takes the form of a set of correspondences between features in the model, lines and points, and features in the image. From this information, the program determines an appropriate projection model for the camera, scaled orthographic or perspective, the dimensions of the object, its pose relative to the camera and, in the case of perspective projection, the focal length of the camera.

The principal difficulties in solving this problem stem from the nonlinearities associated with the unknown rotation,  $R \in SO(3)$  that represents the orientation of the camera with respect to the objects frame of reference. In some situations, it is possible to recover information about this rotation from vanishing points in the imagery. A number of systems have been proposed which exploit this cue [1], [7]. Less attention has been directed to cases where the vanishing point information is inconclusive or non-existent. The principal contribution of this paper is to describe a framework which is able to handle the full range of situations that can occur in practice including cases where *no* vanishing points are available.

In addition, this paper describes how the reconstruction problem can be framed as an optimization over a compact set with low dimension—no more than four. This optimization problem can be solved efficiently by coupling standard nonlinear optimization techniques with a multistart method which generates multiple starting points for the optimizer by sampling the parameter space uniformly. The result is an efficient, reliable solution system that does not require initial estimates for any of the parameters being estimated.

In [4] and [2], the problem of reconstructing models from one or more images taken with calibrated cameras was addressed. This paper improves on those results by proposing efficient techniques to deal with situations where the imagery was acquired with an incompletely calibrated camera and describes how the computational effort required to solve for all the unknown parameters can be reduced by taking advantage of the structure of the projection equations.

Tomasi and Kanade [8] and Pollefeys et al. [5], [6] describe effective techniques for recovering the structure of a rigid scene from a sequence of images acquired under orthographic and perspective projection models, respectively. However, multiframe techniques are not applicable in situations where only one image is available.

Section 2 of this paper presents an outline of the reconstruction procedure, while Sections 2.1 and 2.2 describe the solution to various subproblems of this reconstruction task. Section 3 presents results that were obtained with this algorithm on actual images and on simulated data. A discussion of our conclusions and future work is presented in Section 4.

## 2 RECONSTRUCTION PROCEDURE

As described in the previous section, the reconstruction procedure hinges on the observation that the primary difficulties in the reconstruction problem center around the nonlinearities introduced by the rotation between the camera frame and the object's frame of reference. Given an estimate for this rotation and the focal length of the camera, the other unknowns can be determined by finding the minima of a positive definite quadratic form—a well-understood and well-conditioned optimization problem which can be solved efficiently using standard techniques from linear algebra (see Sections 2.1.2 and 2.2.2). This being the case, the proposed reconstruction method proceeds by conducting a search over the set of camera orientations and focal lengths for values that are in best agreement with the observed image measurements.

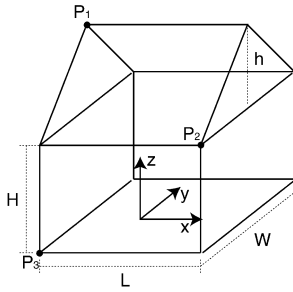


Fig. 1. A simple example of a linearly parameterized polyhedral model. The coordinates of each of the vertices in this figure can be expressed as a linear function of the parameter vector  $\lambda = (LWHh)^t$ .

In the sequel, we will discuss a variety of subcases for both perspective and orthographic projection, ranging from situations where all of the vanishing points can be observed to situations where none can be found. For each case, we detail how the resulting reconstruction problem can either be solved directly or reformulated as an optimization over a compact set with low dimension. Once the problem has been reduced to this form, it can be solved by applying standard nonlinear optimization techniques and a multistart method which chooses starting points for the optimization procedure by sampling the parameter space uniformly. Such an approach is made feasible because of the fact that the parameter space can be bounded and can, therefore, be sampled effectively.

The first stage of the reconstruction procedure involves finding feature correspondences in the image data. A software system has been implemented that allows the user to specify correspondences between edges in the model and edges in the image by selecting a line in the model and then tracing the corresponding line in the image. Since the lines that the user draws are superimposed with the image, this method allows for very accurate recovery of the image edges. Through this procedure, we are able to associate vertices in the model with lines in the image. These point-to-line correspondences will be used in most calculations; however, in some cases, we will require correspondences between model vertices and image points. These image points can be found by computing the intersections of the lines drawn by the user.

Once these correspondences have been established, the reconstruction procedure attempts to determine whether a scaled orthographic or perspective camera model should be employed. One simple way to distinguish between the two imaging situations is by analyzing lines in the image that correspond to parallel lines in the scene. If a set of lines in the image corresponding to parallel lines in the scene appear to verge, then the system employs a perspective projection model.

In situations where no verging lines are found, the reconstruction procedure assumes a scaled orthographic projection model, recovers a solution for the unknown parameters, and then computes the residual disparity between the reprojected model vertices and the lines in the image. If this residual is above a certain threshold value, the system switches to a perspective model. Thus, the simpler projection model (i.e., scaled orthographic) is favored if it explains the data sufficiently well (see Fig. 2).

The next step in the reconstruction procedure is the computation of vanishing points in the image of the  $(x)$ -,  $(y)$ -, and  $(z)$ -directions of the model, if possible. Suppose that the user specifies  $n$  lines in the model that are each parallel to the  $x$ -axis of the object. Let  $(l_1, l_2, \dots, l_n)$  be 3-vectors representing the projective coordinates of the corresponding lines in the image. Then, the homogeneous coordinates of the vanishing point in the  $x$ -direction

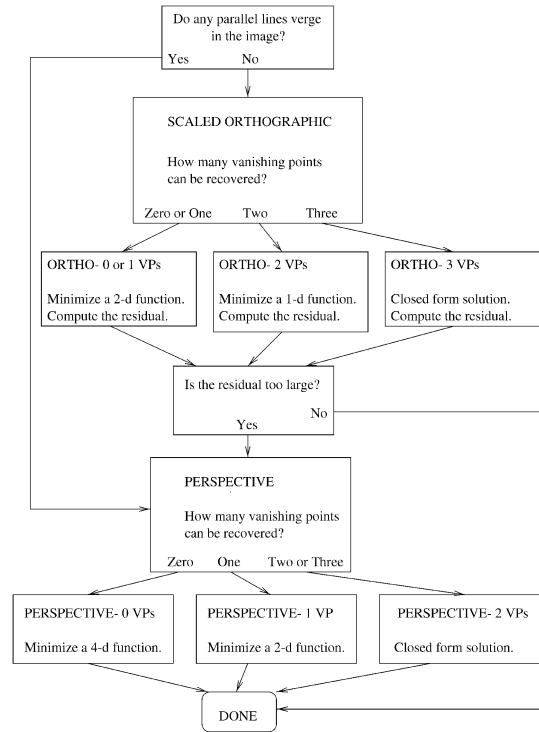


Fig. 2. A flow chart describing the operation of the reconstruction procedure.

is the vector  $v_x$  that minimizes  $\sum (l_i^t v_x)^2$ . This vector can be found by eigenvalue decomposition of  $A^t A$ , where  $A$  is the matrix whose rows consist of the  $l_i^t$ s. The "best estimate" for the vanishing point is the eigenvector that corresponds to the eigenvalue of  $A^t A$  with smallest magnitude.

Under a scaled orthographic projection model there are three cases to consider: three vanishing points recovered, two vanishing point recovered to vanishing points recovered. In the first case, the unknowns can be found in closed form. If only two vanishing points are recovered, the unknowns can be found by solving a one-dimensional minimization problem. In the last case, a two-dimensional optimization problem must be solved.

If the projection model is perspective, there are three possible cases: Two or three vanishing points recovered, one vanishing point recovered, no vanishing points recovered. In the first case, the system can be solved in closed form. In the second case, the problem reduces to minimizing a function of two variables. In the last case, the problem reduces to minimizing a function of four variables.

In the sequel, it is assumed that, after a suitable change of image coordinates, the aspect ratio of the camera is one and the coordinates of the principal point in the image are  $(0, 0)$ . In most situations, the aspect ratio of the imaging device is known a priori and the principal point is, for all practical purposes, coincident with the image center. In the case of scaled orthographic projection, the exact location of the principal point is, of course, immaterial to the reconstruction computation.

## 2.1 Scaled Orthographic Cases

Under the scaled orthographic projection model the projection matrix  $P$ , which relates coordinates of points in the model to their projections on the image plane, can be written as follows:

$$P = \begin{bmatrix} f & 0 & 0 & 0 \\ 0 & f & 0 & 0 \\ 0 & 0 & 0 & 1 \end{bmatrix} \begin{bmatrix} R & T \\ 0 & 1 \end{bmatrix}, \quad (2)$$

where  $f$  denotes the scale factor associated with this camera and  $R \in SO(3)$  and  $T \in \mathfrak{R}^3$  represent the rotation and translation of the camera with respect to the model frame.

### 2.1.1 Recovering Rotation from Vanishing Points

The homogeneous coordinates of the vanishing point in the image,  $v_x$ , corresponding to the  $x$ -direction in the model frame can be computed as follows:

$$v_x \propto P \begin{pmatrix} 1 \\ 0 \\ 0 \\ 0 \end{pmatrix} \propto \begin{pmatrix} R_{11} \\ R_{21} \\ 0 \end{pmatrix}. \quad (3)$$

In an analogous manner, we can obtain expressions for  $v_y$  and  $v_z$ :  $v_y \propto (R_{12}R_{22}0)^t$ ,  $v_z \propto (R_{13}R_{23}0)^t$ .

When all three vanishing points can be recovered, we are effectively given three pieces of information about the rotation matrix  $R$ . That is, for some  $a$ ,  $b$ , and  $c$ , the vanishing points give us

$$\begin{pmatrix} A \\ D \end{pmatrix} = a \begin{pmatrix} R_{11} \\ R_{21} \end{pmatrix}, \begin{pmatrix} B \\ E \end{pmatrix} = b \begin{pmatrix} R_{12} \\ R_{22} \end{pmatrix}, \begin{pmatrix} C \\ F \end{pmatrix} = c \begin{pmatrix} R_{13} \\ R_{23} \end{pmatrix}. \quad (4)$$

Since the first two rows of  $R$  are each of unit length, we have the equations

$$\left(\frac{A}{a}\right)^2 + \left(\frac{B}{b}\right)^2 + \left(\frac{C}{c}\right)^2 = 1 \quad (5)$$

$$\left(\frac{D}{a}\right)^2 + \left(\frac{E}{b}\right)^2 + \left(\frac{F}{c}\right)^2 = 1. \quad (6)$$

Because the first two rows of  $R$  are orthogonal to each other, we have the equation

$$\frac{AD}{a^2} + \frac{BE}{b^2} + \frac{CF}{c^2} = 0.$$

This can be summarized as a system of three linear equations in three unknowns:

$$\begin{bmatrix} A^2 & B^2 & C^2 \\ D^2 & E^2 & F^2 \\ AD & BE & CF \end{bmatrix} \begin{pmatrix} \frac{1}{a^2} \\ \frac{1}{b^2} \\ \frac{1}{c^2} \end{pmatrix} = \begin{pmatrix} 1 \\ 1 \\ 0 \end{pmatrix},$$

which can easily be solved to yield  $a$ ,  $b$ ,  $c$ , and ultimately  $R$  by utilizing the fact that the third row of  $R$  is simply the cross product of the first two rows. There is actually a four-way ambiguity in recovering  $R$  because the signs of  $a$ ,  $b$ , and  $c$  are unknown. The rotation matrix is chosen in such a way that the corresponding optimal solution for the dimension vector  $\lambda$  consists entirely of positive entries.

There are situations where the system of linear equations described above will become singular. This will occur when two of the vanishing points are coincident. In this case, the more general reconstruction procedure described in Section 2.1.4 will be invoked to obtain a solution.

### 2.1.2 Recovering Scene Dimensions

Once an estimate for the rotation matrix becomes available, all that remains is to calculate the dimension vector  $\lambda$  and  $t$ . According to the model, the coordinates of the  $j$ th vertex in the world frame are given by  $K_j\lambda$ . Let  $l_{jk} = (l_{jk}^x, l_{jk}^y, l_{jk}^z)^t$  represent the homogeneous coordinates of the line in the image plane connecting points  $j$  and

$k$ . Then, the constraint that the projection of the  $j$ th vertex in the image should lie along this line can be expressed as follows:

$$\begin{aligned} l_{jk}^t P \begin{pmatrix} K_j\lambda \\ 1 \end{pmatrix} &= 0 \\ \Rightarrow \begin{pmatrix} l_{jk}^x & l_{jk}^y \end{pmatrix} [fG(RK_j\lambda + T)] + l_{jk}^z &= 0 \\ \Rightarrow \begin{pmatrix} l_{jk}^x & l_{jk}^y \end{pmatrix} [(GRK_j \quad I)] \begin{pmatrix} f\lambda \\ fT_x \\ fT_y \end{pmatrix} + l_{jk}^z &= 0, \end{aligned}$$

where

$$G = \begin{pmatrix} 1 & 0 & 0 \\ 0 & 1 & 0 \end{pmatrix}.$$

So, for each point-to-line correspondence, we can construct an affine equation in the parameter vector

$$\begin{pmatrix} f\lambda \\ fT_x \\ fT_y \end{pmatrix}.$$

If a sufficient number of correspondences are available, one can obtain a solution for this parameter vector by solving the resulting linear system. Note that this procedure yields no information about the  $z$  component of the translation vector  $T$ . It is also important to keep in mind that the solution only yields the dimensions of the scene up to a scale factor since it is impossible to separate the scale parameter  $f$  from the other variables in the vector.

### 2.1.3 Two Vanishing Points Recovered

In situations where only two of the three vanishing points are available, it is possible to obtain a solution for the reconstruction problem using the procedures given above by optimizing over all possible values for the missing vanishing point.

Suppose, for example, we are given  $v_x$  and  $v_y$ , then we can obtain estimates for the scene structure by minimizing the following function from the interval  $[0, \pi]$  to  $\mathfrak{R}^+$ :

$$\text{function Res}(\theta) \quad \text{Step 1) Let } v_z = \begin{pmatrix} \cos(\theta) \\ \sin(\theta) \\ 0 \end{pmatrix}.$$

Step 2) Using the procedures in Sections 2.1.1 and 2.1.2, compute  $R, f\lambda, fT_x$ , and  $fT_y$ .

Step 3) Calculate the residue,  $\Sigma \left( l_{ij}^t P \begin{pmatrix} K_i\lambda \\ 1 \end{pmatrix} \right)^2$ , and return this value.

One can use standard minimization techniques such as Golden Section Search to minimize the value of  $Res(\theta)$  and, thus, find the appropriate values for the unknown parameters. Since this is an optimization problem with only one degree of freedom on a bounded interval, it can be solved quite quickly.

### 2.1.4 No Vanishing Points Recovered

In the case where no vanishing point information is available the reconstruction system makes use of correspondences between model vertices and image points. If  $(u_i, v_i)$  represents the measured location of the projection of the  $i$ th model vertex in the image, then the system chooses values of the unknown parameters to minimize the discrepancy between the observed image locations and the predicted values. That is, the goal of the reconstruction system is to minimize the following objective function,  $O$ , where the rotation matrix  $R$  has been rewritten as the product of a series of rotations

about the  $x$ ,  $y$ , and  $z$  axes and the matrix  $G$  is defined in Section 2.1.2

$$O = \Sigma \left\| \begin{pmatrix} u_i \\ v_i \end{pmatrix} - fG(R_z(\gamma)R_y(\beta)R_x(\alpha)K_i\lambda + T) \right\|^2.$$

This expression can be simplified by utilizing the fact that rotation about the optical axis,  $z$ , corresponds to a planar rotation of the image features. So, if the angles  $\alpha$  and  $\beta$  were known,  $O$  could be rewritten as

$$\begin{aligned} O &= \Sigma \left\| \begin{pmatrix} u_i \\ v_i \end{pmatrix} - \begin{pmatrix} c & -s \\ s & c \end{pmatrix} \left( L_i\lambda' + \begin{pmatrix} T'_x \\ T'_y \end{pmatrix} \right) \right\|^2 \\ &= \Sigma \left\| \begin{pmatrix} c & s \\ -s & c \end{pmatrix} \begin{pmatrix} u_i \\ v_i \end{pmatrix} - \left( L_i\lambda' + \begin{pmatrix} T'_x \\ T'_y \end{pmatrix} \right) \right\|^2, \end{aligned}$$

where  $L_i = GR_y(\beta)R_x(\alpha)K_i$ ,  $c = \cos \gamma$ ,  $s = \sin \gamma$ ,  $\lambda' = f\lambda$ , and

$$\begin{pmatrix} T'_x \\ T'_y \end{pmatrix} = f \begin{pmatrix} c & s \\ -s & c \end{pmatrix} \begin{pmatrix} T_x \\ T_y \end{pmatrix}.$$

In this situation, it is possible to compute optimal estimates for  $\gamma$ ,  $\lambda'$ ,  $T'_x$ , and  $T'_y$  by rewriting the objective function as follows:

$$\begin{aligned} O &= \Sigma \left\| \begin{pmatrix} c & s \\ -s & c \end{pmatrix} \begin{pmatrix} u_i \\ v_i \end{pmatrix} - \left( L_i\lambda' + \begin{pmatrix} T'_x \\ T'_y \end{pmatrix} \right) \right\|^2 \\ &= \Sigma \left\| \begin{pmatrix} u_i & v_i \\ v_i & -u_i \end{pmatrix} \begin{pmatrix} c \\ s \end{pmatrix} - I \begin{pmatrix} T'_x \\ T'_y \end{pmatrix} - L_i\lambda' \right\|^2 \\ &= \Sigma \left\| \begin{bmatrix} u_i & v_i & 1 & 0 \\ v_i & -u_i & 0 & 1 \end{bmatrix} \begin{pmatrix} c \\ s \\ T'_x \\ T'_y \end{pmatrix} - L_i\lambda' \right\|^2. \end{aligned}$$

This can be recognized as the standard problem of finding a vector  $x = (c \ s \ T'_x \ T'_y \ \lambda')^t$  to minimize  $\|Ax\|^2$  subject to the constraint  $\|Bx\|^2 = 1$ , where the matrix  $B$  is chosen to reflect the constraint that  $c^2 + s^2 = 1$ . This generalized eigenvalue problem can be solved efficiently using standard techniques from linear algebra [3].

The ability to compute optimal estimates for  $f\lambda$ ,  $\gamma$ ,  $fT_x$ , and  $fT_y$ , in this manner, suggests that a solution for the reconstruction problem can be obtained by finding values of  $\alpha$  and  $\beta$  that minimize the following residual function:

function  $\text{Res2}(\alpha, \beta)$

Step 1) Let  $L_i := GR_y(\beta)R_x(\alpha)K_i$  for all  $i$ .

Step 2) Solve the generalized eigenvalue problem to recover  $\gamma$ ,  $\lambda'$ ,  $T'_x$ , and  $T'_y$ , and return the residual value,  $O$ , for these values.

Once again, the problem has been reduced to an optimization over a small number of bounded parameters, in this case,  $\alpha$  and  $\beta$ .

## 2.2 Perspective Cases

In the case of perspective projection, the matrix of intrinsic parameters is given by

$$A = \begin{bmatrix} f & 0 & 0 \\ 0 & f & 0 \\ 0 & 0 & 1 \end{bmatrix},$$

where  $f$  is the focal length of the camera.

### 2.2.1 Recovering Rotation from Two Vanishing Points (not at Infinity)

If two of the vanishing points corresponding to the axes of the objects frame of reference can be recovered where neither one is a point at infinity, then the rotation matrix,  $R$ , can be recovered in closed form [1]. Suppose, for example, we are given  $v_x$  and  $v_y$ . Then, we have the following proportions:

$$v_x \propto AR\hat{x}, \quad v_y \propto AR\hat{y},$$

where  $\hat{x}$  and  $\hat{y}$  are simply the unit vectors along the  $x$  and  $y$  axes, respectively. Since  $R\hat{x}$  is orthogonal to  $R\hat{y}$ , we have the equation

$$(A^{-1}v_x)^t(A^{-1}v_y) = 0$$

which can be rewritten as follows:

$$\begin{aligned} \frac{v_{x1}v_{y1}}{f^2} + \frac{v_{x2}v_{y2}}{f^2} + v_{x3}v_{y3} &= 0 \\ \Rightarrow f &= \sqrt{\frac{v_{x1}v_{y1} + v_{x2}v_{y2}}{-v_{x3}v_{y3}}}. \end{aligned}$$

The first column of  $R$  can then be found by normalizing the vector  $A^{-1}v_x$ . The second column can be found in a similar manner and the third column is simply the cross product of the first two columns. Again, there will be a four-way ambiguity in the solution for  $R$  which can be resolved by choosing the a solution which results in a dimension vector with positive entries.

This method will succeed as long as neither  $v_{x3}$  or  $v_{y3}$  are equal to zero. If one or both of the vanishing points are at infinity, then the method described in Section 2.1.2 can be employed to produce a reconstruction.

### 2.2.2 Recovering Scene Dimensions

The dimension vector  $\lambda$  and the camera translation  $T$  can be found in a manner similar to the method described in Section 2.1.2. Let  $l_{jk}$  represent the homogeneous coordinates of the line in the image plane connecting points  $j$  and  $k$ . Then, the constraint that the projection of this vertex in the image should lie along this line can be expressed as follows:

$$\begin{aligned} l_{jk}^t A(RK_j\lambda + T) &= 0 \\ \Rightarrow l_{jk}^t [ARK_j \ A] \begin{pmatrix} \lambda \\ T \end{pmatrix} &= 0. \end{aligned}$$

Let  $M$  be a matrix formed by stacking the rows of the form  $l_{jk}^t [ARK_j \ A]$ . Then, an estimate for

$$\begin{pmatrix} \lambda \\ T \end{pmatrix},$$

up to a scale factor, can be obtained by finding the unit vector that minimizes

$$\|M \begin{pmatrix} \lambda \\ T \end{pmatrix}\|^2.$$

This is a standard eigenvalue problem.

### 2.2.3 One Vanishing Point Recovered

The previous section describes how estimates for  $\lambda$  and  $T$  can be computed once estimates for  $R$  and  $f$  are available. Knowledge of any vanishing points in the image essentially constrains two of the four degrees of freedom associated with the rotation matrix  $R$  and the focal length parameter  $f$ . We can exploit this constraint by constructing an objective function which computes the residual of

the reconstruction as a function of the remaining two degrees of freedom.

Consider the case where the vanishing point in the  $x$ -direction,  $v_x$  is known. In this case, the problem can be parameterized in terms of a variable  $\theta$  which captures the remaining degree of freedom of the rotation matrix and an angle  $\rho$  which denotes the field of view of the camera in the  $x$ -direction. If the  $x$  dimension of the image is  $m$  pixels, then the focal length,  $f$  is given by  $(m/2)\cot(\rho/2)$ . The advantage of parameterizing the system in terms of the field of view,  $\rho$ , instead of the focal length,  $f$  is that the parameter  $\rho$  can be restricted to the interval  $[0, \pi]$ , while the parameter  $f$  is unbounded.

For a given value of  $\rho$ , one can compute  $f$  and, hence, the matrix  $A$ . Once a value of  $A$  has been generated, it is quite easy to generate a rotation matrix that would generate the observed vanishing point, that is a matrix  $R' \in SO(3)$  such that

$$R' \begin{pmatrix} 1 \\ 0 \\ 0 \end{pmatrix} \propto A^{-1}v_x.$$

One way to accomplish this is by a Gram-Schmidt orthonormalization process. The entire set of rotation matrices which preserve the vanishing point in the  $x$  direction can then be parameterized as follows:  $R = R'R_x(\theta)$ . Once again, there will be a four-way ambiguity in the rotation matrix that must be accounted for.

Based on this analysis, the reconstruction problem can be solved by finding the minimum of the following residual function.

function Res3 ( $\rho, \theta$ )

Step 1) Let  $f = (m/2)\cot(\rho/2)$ .

Step 2) Let  $A = \begin{pmatrix} f & 0 & 0 \\ 0 & f & 0 \\ 0 & 0 & 1 \end{pmatrix}$

Step 3) Generate a matrix  $R'$  such that  $R' \begin{pmatrix} 1 \\ 0 \\ 0 \end{pmatrix} \propto A^{-1}v_x$

Step 4) Let  $R := R'R_x(\theta)$

Step 5) Compute estimates for  $\lambda$  and  $T$

Step 6) Calculate the residue,  $\Sigma(l_{ij}^t A(RK_i \lambda + T))^2$ , and return this value.

If a second vanishing point is available, it can be used to resolve the ambiguity associated with the rotation matrix. For example, if the vanishing point in the  $y$  direction,  $v_y$  is available then once an  $A$  matrix has been chosen, one can determine the camera orientation immediately by selecting a rotation matrix  $R$ , where the first and second columns are proportional to  $A^{-1}v_x$  and  $A^{-1}v_y$ , respectively. Effectively, this reduces the reconstruction problem to an optimization over a single parameter  $\rho$ . As mentioned previously, this approach should be preferred to the one described in Section 2.2.1 in situations where one or both of the vanishing points are at infinity.

### 2.2.4 No Vanishing Points Recovered

When no vanishing point information is available, finding a solution for the reconstruction problem can be recast as finding values for  $R$  and  $f$  that minimize the residual function described below. This optimization is carried out over four bounded parameters:  $\alpha, \beta$ , and  $\gamma$  which represent an Euler angle parameterization of  $R$  and  $\rho$  which denotes the field of view of the camera.

function Res4 ( $\alpha, \beta, \gamma, \rho$ )

Step 1) Let  $R = R_z(\gamma)R_y(\beta)R_x(\alpha)$  and let

$f = (m/2)\cot(\rho/2)$ .

Step 2) Let  $A = \begin{pmatrix} f & 0 & 0 \\ 0 & f & 0 \\ 0 & 0 & 1 \end{pmatrix}$

Step 3) Using the procedure described in Section 2.2.2, compute  $\lambda$ , and  $T$ .

Step 4) Calculate the residue,  $\Sigma(l_{ij}^t AR(K_i \lambda + T))^2$ , and return this value.

## 3 EXPERIMENTAL RESULTS

### 3.1 Simulation Results

In order to investigate the efficacy of the proposed reconstruction system, a series of trials were carried out on simulated data sets. In these experiments, the most general versions of the perspective and orthographic reconstruction techniques were used; namely, those described in Sections 2.2.4 and 2.1.4, respectively. These methods do not make any use of vanishing point information and are formulated as optimizations over four and two parameters, respectively.

For each of these cases, we generated image measurements corresponding to a polyhedron with 64 vertices parameterized by 19 dimensions viewed from 20 different vantage points. The simulated image measurements were corrupted with noise equivalent to one pixel in a 400 by 300 image. The multistart optimization procedure invoked standard numerical minimization procedures from randomly chosen starting points until a minima with an acceptable residual value is found. The number of trials required to find an acceptable minima along with the errors in the estimated parameters at convergence was recorded.

Note that since the reconstruction procedure can only recover the dimension and camera translation parameters up to a scale factor, the error was calculated by first scaling the recovered parameters until the mean squared disparity between the recovered parameters and the true parameter values was minimized. The percentage error between the recovered parameter vector  $\lambda$  and the actual parameter values  $\lambda_t$  was then computed from the following ratio,  $\|\lambda - \lambda_t\|/\|\lambda_t\|$ .

For the perspective case, the average number of trials needed to find the minimum was 4.9. At convergence, the average error in the rotation parameter was 0.30 degrees, the average error in the recovered field of view was 0.42 degrees, and the average error in the dimension parameters was 0.66 percent. For the orthographic case, the multistart method required two trials, on average, to find an appropriate minimum. At convergence, the average error in the rotation parameter was 0.25 degrees, while the average error in the dimension parameters was 2 percent.

As with any image-based reconstruction technique where disparity in the image is used as a proxy for metric error, it is possible to construct degenerate configurations where one or more of the object dimensions cannot be recovered from the image data. The canonical example would be a box viewed under orthographic projection along one of its axes, in this case, the dimension of the object along the viewing direction cannot be recovered. In these situations, the proposed technique may return results with a large error in the unobservable parameters.

### 3.2 Results on Real Images

The following results were obtained using photographs taken with a Kodak DC210 digital camera. All of the images were acquired in high-resolution mode, which produces  $864 \times 1,152$  images.

Fig. 3a shows a box adjacent to a block of wood and Figs. 3b and 3c show texture-mapped reconstructions of the scene viewed from novel vantage points. The reconstruction was done using the method of Section 2.2.1 (two or three vanishing points found under perspective) and then the estimates of the parameters were refined using the nonlinear minimization of Section 2.2.4. The vector  $\lambda$ , which gives the dimensions of the object, were measured by hand and found to be (in millimeters) (35 86 72 19 39 78)<sup>t</sup>. After

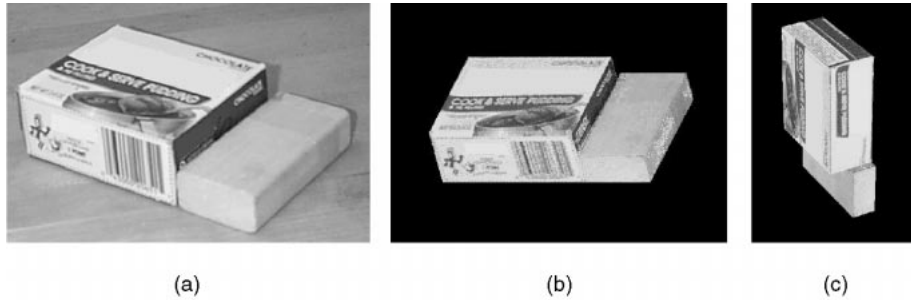


Fig. 3. (a) Two boxes with slight perspective effects. (b) and (c) Texture mapped reconstructions of the scene.

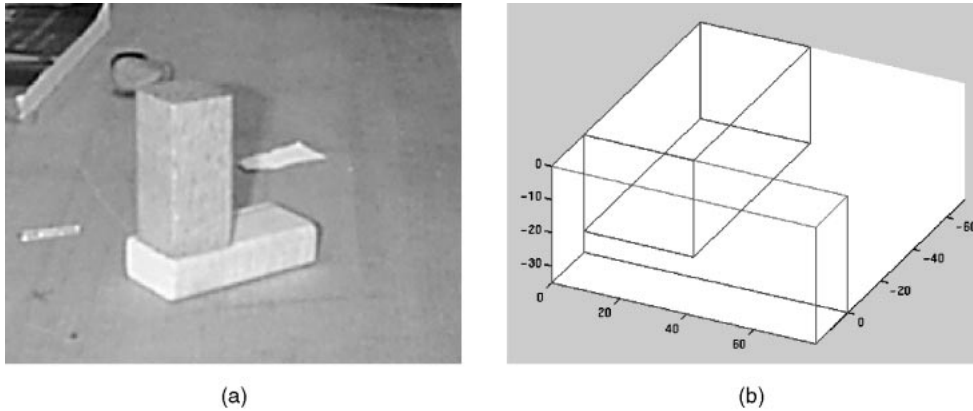


Fig. 4. (a) Two boxes under a near-orthographic projection. (b) Wireframe reconstruction.

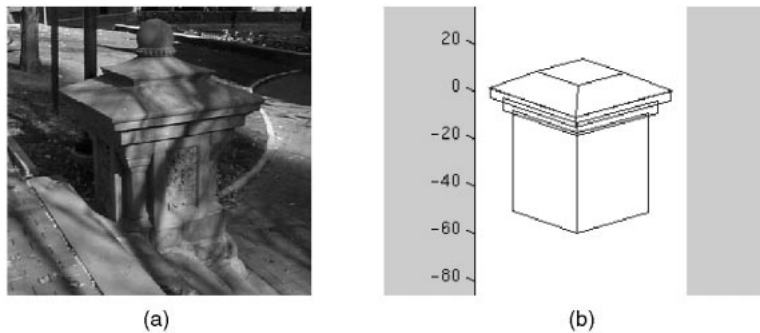


Fig. 5. (a) A pyramid atop three boxes under a near-orthographic projection. (b) Wireframe reconstruction.

choosing an appropriate scaling factor, the reconstruction gave an estimate (in millimeters) of  $(33.7 \ 85.7 \ 72.4 \ 18.0 \ 39.2 \ 78.6)^t$ . This represents an RMS error of 0.75 mm. Notice that we cannot check the accuracy of the pose estimation because we do not have a truth model of these parameters.

Fig. 4a is an image of two blocks of wood under a near-orthographic projection. The wireframe reconstruction in Fig. 4b was obtained using the algorithm of Section 2.1.4 no vanishing points under orthography though we could have obtained a starting point for this minimization using the available vanishing points. The dimension vector was given in millimeters by  $(78 \ 19 \ 39 \ 31 \ 69.5 \ 31)^t$  and the algorithm gave an estimate in millimeters of  $(78.2 \ 19.6 \ 35.3 \ 32.5 \ 71.0 \ 29.1)^t$ , which yields an RMS error of 1.9 mm.

The image in Fig. 5a is a stone structure on the University of Pennsylvania campus. We modeled it as a frustum atop a stack of three boxes. (We ignored the pyramid that is above the frustum.) Using a scaled orthographic projection model, we obtained the wireframe in Fig. 5b. The dimension of the object are given (in inches) by  $(25 \ 6.5 \ 13 \ 24 \ 2 \ 22 \ 2.5 \ 18 \ 45)^t$  and the algorithm estimated the dimensions as  $(26 \ 7.5 \ 13 \ 26 \ 4 \ 22 \ 5 \ 19 \ 42)^t$ . The RMS

error, in this case, was 1.7 inches. This reconstruction was not as accurate as the others partly because much of the stone was chipped away from the structure and this made edge identification difficult. In addition, the structure does not have precise right angles and only somewhat approximates our model of a frustum

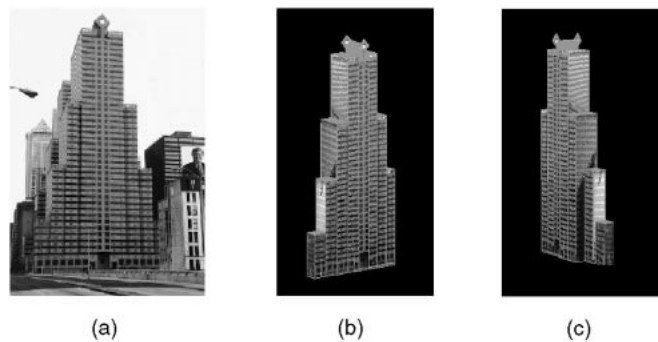


Fig. 6. (a) The Penn Center in Philadelphia, Pennsylvania. (b) and (c) Texture mapped reconstructions.



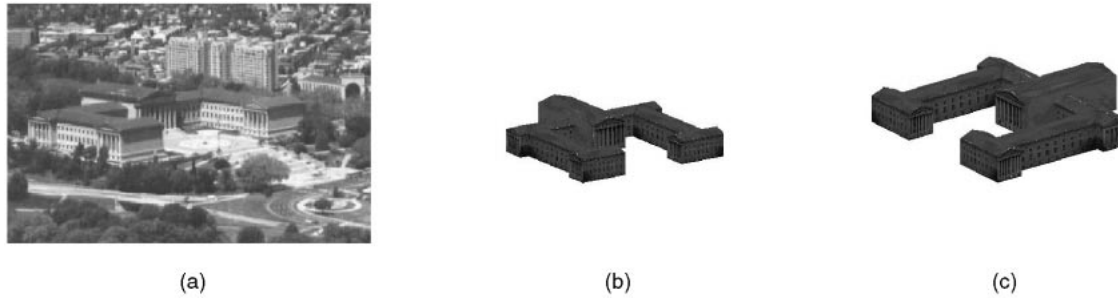


Fig. 7. (a) The Art Museum in Philadelphia, Pennsylvania. (b) and (c) Texture mapped reconstructions.

above a stack of boxes. It should be noted, however, that the only inaccurate measures corresponded to the height of each box. These heights are small compared to the other measurements and difficult to discern in the photograph.

Fig. 6a shows the Penn Center in Center City, Philadelphia. The reconstructions are shown in Figs. 6b and 6c. Philadelphia's Art Museum is shown in Fig. 7a; its reconstructions are shown in Figs. 7b and 7c.

#### 4 CONCLUSION

This paper presents a practical scheme for recovering models of polyhedral objects from single images taken with a camera of unknown focal length. The resulting algorithm can be used to recover accurate three-dimensional models of polyhedral objects from commonly available imagery including images obtained from Websites or scanned from newspapers. Experimental results have been presented which demonstrate the accuracy and efficacy of the proposed techniques on simulated data and on actual images.

Future work will address the use of multiple views of objects to better recover parameters and the use of automated edge extraction. We believe that most of the error in our estimates of  $\lambda$  were due to human error in drawing the edges. A better system would allow the user to specify the approximate location of an edge and then have the software refine this estimate automatically based on image gradients.

#### ACKNOWLEDGMENTS

This research was supported by the US National Science Foundation under a CAREER grant (IIS98-7687) and under an US National Science Foundation Graduate Research Training Grant (GER93-55018).

#### REFERENCES

- [1] B. Caprile and V. Torre, "Using Vanishing Points for Camera Calibration," *Int'l J. Computer Vision*, vol. 4, no. 2, pp. 127-140, Mar. 1990.
- [2] P.E. Debevec, C.J. Taylor, and J. Malik, "Modeling and Rendering Architecture from Photographs: A Hybrid Geometry- and Image-Based Approach," *Proc. SIGGRAPH '96*, pp. 11-21, Aug. 1996.
- [3] O. Faugeras, *Three-Dimensional Computer Vision*. MIT Press, 1993.
- [4] D.G. Lowe, "Fitting Parameterized Three-Dimensional Models to Images," *IEEE Trans. Pattern Analysis Machine Intelligence*, vol. 13, no. 5, pp. 441-450, May 1991.
- [5] M. Pollefeys, L. Van Gool, and M. Proesmans, "Euclidean 3D Reconstruction from Image Sequences with Variable Focal Lengths," *Proc. European Conf. Computer Vision*, pp. 31-42, 1996.
- [6] M. Pollefeys, R. Koch, L. Van Gool, "Self-Calibration and Metric Reconstruction in Spite of Varying and Unknown Internal Camera Parameters," *Proc. Int'l Conf. Computer Vision*, pp. 90-95, 1998.
- [7] J.A. Shufelt, "Projective Geometry and Photometry for Object Detection and Delineation," PhD thesis CMU-CS-96-164, Carnegie Mellon Univ., July 1996.
- [8] C. Tomasi and T. Kanade, "Shape and Motion from Image Streams under Orthography: A Factorization Method," *Int'l J. Computer Vision*, vol. 9, no. 2, pp. 137-154, Nov. 1992.

► For further information on this or any computing topic, please visit our Digital Library at <http://computer.org/publications/dlib>.