



University of Pennsylvania
ScholarlyCommons

Departmental Papers (ESE)

Department of Electrical & Systems Engineering

9-17-2012

Analytical study of subwavelength imaging by uniaxial epsilon-near-zero metamaterial slabs

Giuseppe Castaldi
University of Sannio

Silvio Savoia
university of Sannio

Vincenzo Galdi
University of Sannio

Andrea Alù
University of Texas at Austin

Nader Engheta
University of Pennsylvania, engheta@ee.upenn.edu

Follow this and additional works at: http://repository.upenn.edu/ease_papers

Recommended Citation

Giuseppe Castaldi, Silvio Savoia, Vincenzo Galdi, Andrea Alù, and Nader Engheta, "Analytical study of subwavelength imaging by uniaxial epsilon-near-zero metamaterial slabs", . September 2012.

Giuseppe Castaldi, Silvio Savoia, Vincenzo Galdi, Andrea Alù, & Nader Engheta. (2012). Analytical study of subwavelength imaging by uniaxial epsilon-near-zero metamaterial slabs. *Physical Review B*, 86(11), 115123. doi: [10.1103/PhysRevB.86.115123](https://doi.org/10.1103/PhysRevB.86.115123)
©2012 American Physical Society

This paper is posted at ScholarlyCommons. http://repository.upenn.edu/ease_papers/633
For more information, please contact repository@pobox.upenn.edu.

Analytical study of subwavelength imaging by uniaxial epsilon-near-zero metamaterial slabs

Abstract

We discuss the imaging properties of uniaxial epsilon-near-zero metamaterial slabs with possibly tilted optical axis, analyzing their subwavelength focusing properties as a function of the design parameters. We derive in closed analytical form the associated two-dimensional Green's function in terms of special cylindrical functions. For the near-field parameter ranges of interest, we are also able to derive a small-argument approximation in terms of simpler analytical functions. Our results, validated and calibrated against a full-wave reference solution, expand the analytical tools available for computationally efficient and physically incisive modeling and design of metamaterial-based subwavelength imaging systems.

Comments

Giuseppe Castaldi, Silvio Savoia, Vincenzo Galdi, Andrea Alù, & Nader Engheta. (2012). Analytical study of subwavelength imaging by uniaxial epsilon-near-zero metamaterial slabs. *Physical Review B*, 86(11), 115123. doi: [10.1103/PhysRevB.86.115123](https://doi.org/10.1103/PhysRevB.86.115123)

©2012 American Physical Society

Analytical study of subwavelength imaging by uniaxial epsilon-near-zero metamaterial slabs

Giuseppe Castaldi, Silvio Savoia, and Vincenzo Galdi*

Waves Group, Department of Engineering, University of Sannio, I-82100 Benevento, Italy

Andrea Alù

Department of Electrical and Computer Engineering, The University of Texas at Austin, Austin, Texas 78712, USA

Nader Engheta

Department of Electrical and Systems Engineering, University of Pennsylvania, Philadelphia, Pennsylvania 19104, USA

(Received 8 May 2012; revised manuscript received 29 August 2012; published 17 September 2012)

We discuss the imaging properties of uniaxial epsilon-near-zero metamaterial slabs with possibly tilted optical axis, analyzing their subwavelength focusing properties as a function of the design parameters. We derive in closed analytical form the associated two-dimensional Green's function in terms of special cylindrical functions. For the near-field parameter ranges of interest, we are also able to derive a small-argument approximation in terms of simpler analytical functions. Our results, validated and calibrated against a full-wave reference solution, expand the analytical tools available for computationally efficient and physically incisive modeling and design of metamaterial-based subwavelength imaging systems.

DOI: [10.1103/PhysRevB.86.115123](https://doi.org/10.1103/PhysRevB.86.115123)

PACS number(s): 78.67.Pt, 78.20.Ci, 41.20.Jb, 42.30.Wb

I. INTRODUCTION

The seminal work by Pendry¹ demonstrated that a slab of negative-index material (lossless and impedance-matched with the surrounding medium) would ideally image a perfect copy of a source. Such *perfect lensing* mechanism allows the restoration of the subwavelength spatial details carried by the evanescent spectral components via efficient coupling to resonant surface-plasmon states, and may lead to revolutionary applications in a variety of fields, including nanolithography, biosensing, and spectroscopy. At infrared and optical frequencies, where magnetic activity is difficult to achieve and many materials may naturally exhibit negative permittivity, an approximate implementation was suggested¹ and experimentally demonstrated^{2–4} in the simple form of a thin layer of silver, with severe restrictions on the field polarization and near-field range, and the subwavelength resolution ultimately limited by the material losses.

The above results have generated a growing interest in the study of metallodielectric multilayered structures (see, e.g., Refs. 5–18 for a sparse sampling), which allow mitigation of the above loss- and range-related limitations, as well as further degrees of freedom for design optimization. Essentially, these configurations exploit the inherent (possibly *extreme*) anisotropy exhibited by metallodielectric multilayers in order to convert evanescent spectral components with large transverse wave numbers into propagating waves. More recently, the use of *obliquely* layered structures has been proposed in order to achieve simple image manipulation (lateral displacement) with subwavelength resolution.¹⁹ Of particular interest is the *epsilon-near-zero* (ENZ) regime, which has also found interesting applications to other scenarios, including cloaking,^{20,21} light *funneling* through subwavelength apertures,²² controlled leaky-wave radiation,²³ suppression of Anderson localization in disordered multilayers,²⁴ loss-induced omnidirectional bending,²⁵ and nonlinearity enhancement.^{26,27} Also worth of mention are the studies on subwavelength imaging devices based on wire media (see, e.g.,

Refs. 28–30) as well as on the transformation-optics paradigm (see, e.g., Refs. 31–33).

With the exception of few cases (see, e.g., Refs. 8 and 17) for which analytical approximations of the Green's function can be worked out, the imaging properties (e.g., resolution) of the above configurations need to be assessed numerically. In this paper, we study in more detail this geometry and we show that the two-dimensional (2D) Green's function of a slab of uniaxial ENZ metamaterial with tilted optical axis can be calculated analytically in closed form, greatly facilitating the analysis and design of its anomalous imaging properties. Our results are expressed in terms of special cylindrical functions that can be efficiently computed, and are also amenable to simple approximations in the parameter range of interest. These findings shed new light on the subwavelength imaging properties of ENZ metamaterial slabs and allow tailoring their properties without the need of extensive numerical simulations.

The rest of the paper is organized as follows. In Sec. II, we introduce the problem geometry and formulation. In Sec. III, we derive the analytical solution for the Green's function (with the more involved details relegated in Appendices A–C), discuss the related computational issues, and work out more manageable approximations for specific values of the design parameters of interest. In Sec. IV, we illustrate some representative results in order to validate and calibrate our proposed solutions, and discuss relevant physical insights on the imaging properties of the considered metamaterial lenses. Finally, in Sec. V, we provide some brief conclusions.

II. PROBLEM GEOMETRY AND FORMULATION**A. Generalities**

Figure 1 shows the geometry of the problem. We consider a 2D scenario featuring a metamaterial slab of thickness d , infinitely extent in the y and z directions, immersed in vacuum. The metamaterial is assumed to be nonmagnetic and uniaxially

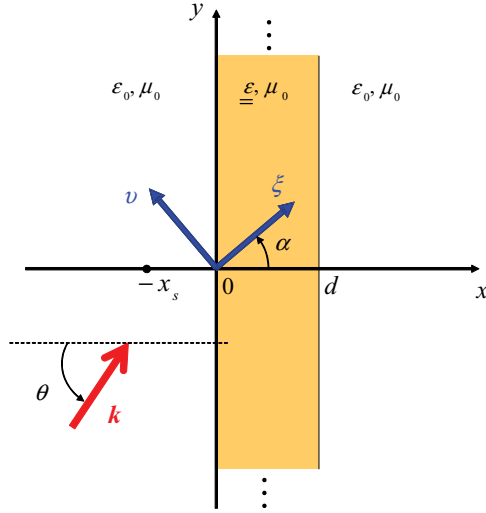


FIG. 1. (Color online) Problem schematic: a magnetic-current line source is placed at a distance x_s from a uniaxially-anisotropic metamaterial slab of thickness d and permittivity tensor $\underline{\underline{\epsilon}}$ given in Eq. (1), immersed in vacuum. Also shown are the global (x, y) and rotated (ξ, ν) Cartesian coordinate reference systems, as well as the wave vector \mathbf{k} of a propagating plane wave.

anisotropic with optical axis tilted of an angle α with respect to the x axis. Accordingly, the corresponding permittivity tensor is most naturally described in the rotated (principal) reference system (ξ, ν, z)

$$\underline{\underline{\epsilon}}_{\{\xi, \nu, z\}} = \epsilon_0 \begin{bmatrix} \epsilon_\xi & 0 & 0 \\ 0 & \epsilon_\nu & 0 \\ 0 & 0 & \epsilon_\nu \end{bmatrix}, \quad (1)$$

and represents a rather general *homogenized* (effective-medium-theory) model for diverse classes of artificial materials, such as multilayered structures or wire media. In what follows, we assume that the homogenized constitutive parameters in Eq. (1) do not depend on the wave vector. While acknowledging the implied limitations in predicting *nonlocal* effects that can take place in metallodielectric multilayers (see, e.g., Refs. 34–36) or wire media (see, e.g., Refs. 37–39), we focus here on this simplified model which is amenable to analytical treatment.

The essential kinematical (wave vector, group velocity) properties of wave propagation in such a medium may be qualitatively understood by looking at the *equifrequency contours* (EFCs). Once again, these are most easily studied in the spectral wave number plane (k_ξ, k_ν) associated with the rotated reference coordinate systems (ξ, ν) in Fig. 1, where they assume the canonical form

$$\frac{k_\xi^2}{\epsilon_\nu} + \frac{k_\nu^2}{\epsilon_\xi} = k_0^2, \quad (2)$$

with $k_0 = \omega\sqrt{\epsilon_0\mu_0} = 2\pi/\lambda_0$ denoting the vacuum wave number (and λ_0 the corresponding wavelength). At variance with the *circular* shape exhibited by isotropic media, depending on the sign of ϵ_ξ and ϵ_ν , these EFCs may be either *elliptic* ($\epsilon_\xi\epsilon_\nu > 0$) or *hyperbolic* ($\epsilon_\xi\epsilon_\nu < 0$), as exemplified in Fig. 2. This implies, especially in the hyperbolic case [cf. Fig. 2(b)],

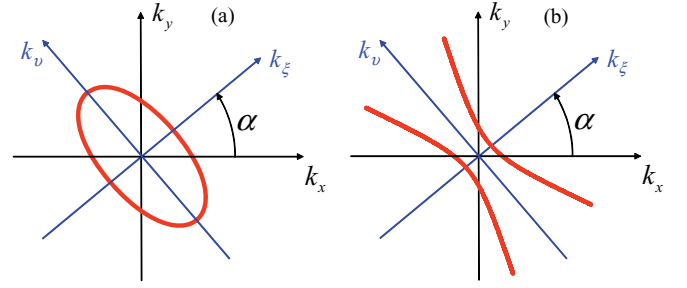


FIG. 2. (Color online) Typical elliptic (a) and hyperbolic (b) equifrequency contours (EFCs) pertaining to the dispersion relation in Eq. (2), for $\epsilon_\xi > \epsilon_\nu > 0$ and $\epsilon_\xi < 0, \epsilon_\nu > 0$, respectively, in the global (k_x, k_y) and rotated (k_ξ, k_ν) spectral reference systems.

that spectral components characterized by large transverse wave numbers (which would be otherwise evanescent) may actually propagate. Moreover, in the ENZ limit ($\epsilon_\nu \rightarrow 0$) of interest, the EFCs tend to become much flatter along the k_ν direction, thereby implying that the allowed group velocities (normal to the EFCs) tend to be directed along the ξ direction, so that subwavelength details can be transported along the optical axis direction. Such condition (in conjunction with $\epsilon_\xi \rightarrow \infty$), which was first proposed in Ref. 5 in order to mitigate the loss-induced limitations in single-layer silver superlenses, may be attained for multilayered structures from standard mixing formulas⁴⁰ using constituent materials with opposite-signed permittivities (e.g., noble metals and dielectrics, at optical frequencies). This condition was also exploited in Ref. 10 for far-field subwavelength imaging. The reader is referred to Refs. 11 and 12 for different extreme-anisotropy-based subwavelength imaging systems relying on Fabry-Perot resonance effects.

B. Green's Function

From the above observations, we expect that the uniaxial ENZ metamaterial slab of interest may exhibit subwavelength image formation and lateral-displacement capabilities. In what follows, we analytically study the response to a unit-amplitude, time-harmonic $[\exp(-i\omega t)]$, z directed magnetic-current (V/m^2) line source located at a distance x_s (typically $\ll \lambda_0$) from the slab (cf. Fig. 1)

$$M_z(x, y) = \delta(x + x_s) \delta(y). \quad (3)$$

We start recalling the well-known Green's function of vacuum for the z -directed magnetic field,

$$\begin{aligned} G_0^{(H)}(x, y; x_s) &= -\frac{\omega\epsilon_0}{4} H_0^{(1)}[k_0\sqrt{(x+x_s)^2 + y^2}] \\ &= -\frac{\omega\epsilon_0}{4\pi} \int_{-\infty}^{\infty} \frac{\exp[i(k_x|x+x_s| + k_y y)]}{k_x} dk_y, \end{aligned} \quad (4a)$$

$$(4b)$$

in terms of the zeroth-order Hankel function of first kind $H_0^{(1)}$ (cf. Sec. 9 in Ref. 41), or the corresponding spectral-integral representation,⁴² with

$$k_x = \sqrt{k_0^2 - k_y^2}, \quad \text{Im}(k_x) \geq 0. \quad (5)$$

Accordingly, the presence of the metamaterial slab can be accounted for by introducing in the spectral integral representation (4b) the corresponding transverse-magnetic plane-wave transmission coefficient $T(k_y)$ and an appropriate displacement along the x direction, viz.,

$$G_S^{(H)}(x, y; x_s) = -\frac{\omega\varepsilon_0}{4\pi} \int_{-\infty}^{\infty} \frac{T(k_y)}{k_x} \times \exp[i(k_x|x + x_s - d| + k_y y)] dk_y. \quad (6)$$

The spectral integral in Eq. (6) cannot be generally calculated analytically in closed form. In certain regimes (see, e.g., Refs. 8 and 17), closed-form near-field approximations may be worked out by applying Cauchy's residue theorem and neglecting the branch-cut contribution. However, in general, a brute-force numerical integration is needed.

C. ENZ regime

In the limit $\varepsilon_v \rightarrow 0$ of interest, the transmission coefficient to be considered in Eq. (6) reduces to (see Appendix A for details)

$$T(k_y) = \frac{2\varepsilon_\xi k_x \exp(-ik_y d \tan \alpha)}{2\varepsilon_\xi k_x - id\varepsilon_\xi k_0^2 + idk_y^2 \sec^2 \alpha}, \quad (7)$$

from which it can be observed that total transmission (i.e., perfect impedance matching) can only be achieved for

$$k_y = \pm k_0 \sqrt{\varepsilon_\xi} \cos \alpha. \quad (8)$$

The above condition can be satisfied for propagating waves impinging from vacuum (i.e., $|k_y| \leq k_0$) with incidence angle (see Fig. 1)

$$\theta = \pm \arcsin(\sqrt{\varepsilon_\xi} \cos \alpha), \quad (9)$$

which admits real solutions for positive values of ε_ξ and $\sqrt{\varepsilon_\xi} |\cos \alpha| \leq 1$.

The transmission coefficient in Eq. (7) can be recast in a convenient canonical form

$$T(k_y) = \frac{\Lambda k_x \exp(-ik_y d \tan \alpha)}{(k_x - \kappa_1)(k_x - \kappa_2)}, \quad (10)$$

where

$$\Lambda = \frac{2i\varepsilon_\xi \cos^2 \alpha}{d}, \quad (11a)$$

$$\kappa_{1,2} = -\left(\frac{\cos^2 \alpha}{d}\right) [i\varepsilon_\xi \mp \sqrt{k_0^2 d^2 \sec^2 \alpha (\sec^2 \alpha - \varepsilon_\xi) - \varepsilon_\xi^2}]. \quad (11b)$$

Accordingly, by substituting Eq. (10) into Eq. (6), the slab response is reduced to calculating the canonical spectral integral

$$G_S^{(H)}(x, y; x_s) = -\frac{\Lambda \omega \varepsilon_0}{4\pi} \int_{-\infty}^{\infty} \frac{\exp[i(k_x x_d + k_y y_d)]}{(k_x - \kappa_1)(k_x - \kappa_2)} dk_y, \quad (12)$$

with Eq. (5) and

$$x_d = x + x_s - d, \quad y_d = y - d \tan \alpha. \quad (13)$$

III. ANALYTICAL RESULTS

A. General solution

Introducing the (normalized) polar coordinates

$$\zeta = k_0 \sqrt{x_d^2 + y_d^2}, \quad \varphi = \arctan\left(\frac{y_d}{x_d}\right), \quad (14)$$

it can be shown (see Appendix B for details) that the canonical spectral integral in Eq. (12) admits closed-form solutions of the type

$$G_S^{(H)}(x, y; x_s) = -\frac{\Lambda \omega \varepsilon_0}{4\pi(\kappa_1 - \kappa_2)} [F_1(\zeta, \varphi) - F_2(\zeta, \varphi)], \quad (15)$$

where

$$F_{1,2}(\zeta, \varphi) = \exp(a_{1,2}^+ \zeta) [A_{1,2}^+ + \chi_{1,2}^+ \mathcal{H}e_0^{(1)}(a_{1,2}^+, \eta_{1,2}^+, \zeta)] \\ + \exp(a_{1,2}^- \zeta) [A_{1,2}^- + \chi_{1,2}^- \mathcal{H}e_0^{(1)}(a_{1,2}^-, \eta_{1,2}^-, \zeta)]. \quad (16)$$

In Eq. (16), $A_{1,2}^+$ and $A_{1,2}^-$ are integration constants,

$$a_{1,2}^\pm = \frac{i(\kappa_{1,2} \cos \varphi \pm |\sin \varphi| \sqrt{k_0^2 - \kappa_{1,2}^2})}{k_0}, \quad (17)$$

$$\text{Im}(\sqrt{k_0^2 - \kappa_{1,2}^2}) \geq 0,$$

$$\chi_{1,2}^\pm = \frac{\pi \kappa_{1,2} (\cos \varphi \sqrt{k_0^2 - \kappa_{1,2}^2} \mp |\sin \varphi| \kappa_{1,2})}{2ik_0 \sqrt{k_0^2 - \kappa_{1,2}^2}}, \quad (18)$$

are known parameters depending on the frequency, slab parameters, and observation direction, and

$$\mathcal{H}e_0^{(1)}(a, \eta, \zeta) = \int_\eta^\zeta \exp(-a\tau) \mathcal{H}_0^{(1)}(\tau) d\tau \quad (19)$$

denotes the complementary incomplete Lipschitz-Hankel integral (CILHI) of the Hankel type⁴³—a special function belonging to the general class of incomplete cylindrical function.⁴⁴ These functions have insofar found applications in other areas of electromagnetics, ranging from diffraction to traveling-wave sources (see, e.g., Ref. 45 for a review)

The lower limit of integration η in Eq. (19) is chosen so as to guarantee convergence at infinity in the complex τ plane, viz.,

$$\eta = \begin{cases} \infty, & \text{Re}(a) \geq 0, \\ \infty \exp(i\pi), & \text{Re}(a) < 0. \end{cases} \quad (20)$$

The calculation of the φ -dependent integration constant $A_{1,2}^+$ and $A_{1,2}^-$ in Eq. (16) is generally quite involved (see the discussion in Appendix C). Nevertheless, for the near-field configuration of direct interest to this investigation, featuring a source located very close to the input slab interface ($x_s \ll \lambda_0$), this calculation becomes remarkably simpler for two specific observation planes located in the two principal planes of the image, namely: transverse cuts at the output slab interface ($x = d$), and orthogonal cuts passing through the fiducial image position ($y_\alpha = d \tan \alpha$). For the former case ($x = d$), we obtain

(see Appendix C for details)

$$A_{1,2}^- = 0, \quad (21a)$$

$$A_{1,2}^+ = C_{1,2} - \chi_{1,2}^+ \mathcal{H}e_0^{(1)}(a_{1,2}^+, \eta_{1,2}^+, 0) - \chi_{1,2}^- \mathcal{H}e_0^{(1)}(a_{1,2}^-, \eta_{1,2}^-, 0), \quad (21b)$$

where

$$C_{1,2} = -\frac{i\kappa_{1,2}}{\sqrt{k_0^2 - \kappa_{1,2}^2}} \left\{ 2\arctan\left(\frac{\kappa_{1,2}}{\sqrt{k_0^2 - \kappa_{1,2}^2}}\right) + \pi \{1 - 4u[\operatorname{Re}(\kappa_{1,2})]u[\operatorname{Im}(\kappa_{1,2})]\} \right\}, \quad (22)$$

with u denoting the Heaviside unit-step function, and⁴³

$$\mathcal{H}e_0^{(1)}(a, \eta, 0) = \frac{2i \ln(a + \sqrt{a^2 + 1}) - \pi}{\pi \sqrt{a^2 + 1}}, \quad (23)$$

with the principal branch chosen for the natural logarithm, and the branch cut for $\sqrt{a^2 + 1}$ chosen as

$$\begin{aligned} \operatorname{Re}(\sqrt{a^2 + 1}) &\geq 0, \quad \forall a, \\ \operatorname{Im}(\sqrt{a^2 + 1}) &\geq 0, \quad \text{for } \operatorname{Re}(\sqrt{a^2 + 1}) = 0. \end{aligned} \quad (24)$$

For the latter case ($y = d \tan \alpha$), the above expressions are still valid if $\operatorname{Re}(a_{1,2}^+) = \operatorname{Re}(a_{1,2}^-) < 0$, otherwise they simply reduce to (see Appendix C for details)

$$A_{1,2}^+ = A_{1,2}^- = 0. \quad (25)$$

It is rather remarkable that in these two relevant planes, of most interest to analyze the imaging properties of the metamaterial slabs, we are able to obtain a closed-form analytical solution of the field distribution induced by an arbitrary magnetic source. This result will be used in the following to highlight the remarkable imaging properties of ENZ metamaterials with arbitrarily tilted anisotropy axis.

B. Physical interpretation

It is of particular interest to identify the distinct phenomena involved in the wave interaction with the geometry of Fig. 1 as a function of the various parameters considered in our analytical solution in Eqs. (15) and (16). First, we notice that the exponential terms $\exp(a_{1,2}^\pm \zeta)$ account for the dominant resonances exhibited by the slab, corresponding to pole singularities in the spectral integral formulation.⁴² Their localization properties can be readily related to the slab physical parameters via Eqs. (17) and (11b).

The terms $\exp(a_{1,2}^\pm \zeta) \mathcal{H}e_0^{(1)}(a_{1,2}^\pm, \eta_{1,2}^\pm, \zeta)$ instead account for the continuous radiation spectrum, corresponding to the branch-cut contributions in the spectral integral formulation.⁴² We remark that, unlike the configuration in Refs. 8 and 17, these contributions are generally non-negligible. Recalling the definition in Eq. (19), these terms may be physically interpreted as smoothed versions (via convolution with a complex-exponential window) of a zeroth-order Hankel function of the first kind $H_0^{(1)}$.

C. Computational aspects

1. Numerical computation of CILHIs

Recalling the expression of the $a_{1,2}^\pm$ parameters in Eq. (17), it is evident that the numerical implementation of our analytical solution requires in general the calculation of complex-argument CILHIs of the Hankel type. In Ref. 43, various series expansions were derived for accurate and efficient computation of these special functions. In particular, by comparison against brute-force numerical integration (via adaptive Gauss/Kronrod quadrature) of the corresponding spectral integrals, efficiency improvements ranging from one to nearly three orders of magnitudes were found.

Our numerical implementation is based on a selective application of the factorial-Neumann and Struve-function series expansions, following the guidelines of Ref. 43 for the various parameter ranges. Although a proper numerical optimization to maximize the calculation efficiency of these coefficients goes beyond our interest, it is evident that our closed-form analytical solution may significantly outperform conventional numerical solvers.

2. Small-argument approximation

Since the application of the metamaterial slab and the focus of this paper is concentrated on the near-field subwavelength imaging scenario, with $x_s \ll \lambda_0$ and $x = d$, a simple small-argument ($\zeta \ll 1$) analytical approximation for the CILHIs may be conveniently utilized. First, we recall the small-argument approximation of the zeroth-order Hankel function of the first kind [cf. Eqs. (9.1.12) and (9.1.13) in Ref. 41],

$$H_0^{(1)}(\tau) \sim 1 + \left(\frac{2i}{\pi}\right) \left[\ln\left(\frac{\tau}{2}\right) + \gamma \right], \quad (26)$$

where γ denotes the Euler–Mascheroni constant.⁴¹ Using this approximation, it follows that

$$\exp(a\zeta) \int_0^\zeta \exp(-a\tau) H_0^{(1)}(\tau) d\tau \sim \left[\frac{\exp(a\zeta) - 1}{a} \right] - \frac{2i}{\pi a} \ln\left(\frac{\zeta}{2}\right) - \frac{2i \{ \exp(a\zeta) [E_1(a\zeta) + \ln(2a)] + \gamma \}}{\pi a}, \quad (27)$$

where E_1 denotes the exponential integral [cf. Eq. (5.1.1) in Ref. 41] which, recalling the expansion in Eq. (5.1.11) of Ref. 41 and exploiting a (1,1) Padé approximant⁴⁶ for the power series part, may be conveniently approximated as

$$E_1(a\zeta) \sim \frac{4a\zeta}{4 + a\zeta} - \gamma - \ln(a\zeta). \quad (28)$$

Recalling Eqs. (19) and (23), we finally obtain the small-argument approximation

$$\exp(a\xi)\mathcal{H}e_0^{(1)}(a,\eta,\xi) \sim \exp(a\xi) \left[\frac{2i \ln(a + \sqrt{a^2 + 1}) - \pi}{\pi\sqrt{a^2 + 1}} - \frac{8ia\xi}{\pi a(4 + a\xi)} \right] + \frac{[\exp(a\xi) - 1]\{2i[\ln(\frac{\xi}{2}) + \gamma] + \pi\}}{\pi a}, \quad (29)$$

in terms of simple analytical functions. By substituting Eq. (29) in Eq. (16), we obtain

$$\begin{aligned} F_{1,2}(\xi,\varphi) \sim & A_{1,2}^+ \exp(a_{1,2}^+ \xi) + \chi_{1,2}^+ \frac{[\exp(a_{1,2}^+ \xi) - 1]\{2i[\ln(\frac{\xi}{2}) + \gamma] + \pi\}}{\pi a_{1,2}^+} \\ & + \chi_{1,2}^+ \exp(a_{1,2}^+ \xi) \left[\frac{2i \ln(a_{1,2}^+ + \sqrt{(a_{1,2}^+)^2 + 1}) - \pi}{\pi\sqrt{(a_{1,2}^+)^2 + 1}} - \frac{8ia_{1,2}^+ \xi}{\pi a_{1,2}^+ (4 + a_{1,2}^+ \xi)} \right] + \chi_{1,2}^- \frac{[\exp(a_{1,2}^- \xi) - 1]\{2i[\ln(\frac{\xi}{2}) + \gamma] + \pi\}}{\pi a_{1,2}^-} \\ & + \chi_{1,2}^- \exp(a_{1,2}^- \xi) \left[\frac{2i \ln(a_{1,2}^- + \sqrt{(a_{1,2}^-)^2 + 1}) - \pi}{\pi\sqrt{(a_{1,2}^-)^2 + 1}} - \frac{8ia_{1,2}^- \xi}{\pi a_{1,2}^- (4 + a_{1,2}^- \xi)} \right], \end{aligned} \quad (30)$$

which, substituted in Eq. (15), yield the final approximation for the Green's function (not given explicitly here for brevity). Once implemented, this solution may provide a complete description of the imaging properties of the metamaterial slab, based on conventional basic functions. Its overall applicability and accuracy, which is expected to be restricted to small values of the argument, will be quantitatively assessed in Sec. IV B.

IV. REPRESENTATIVE NUMERICAL RESULTS AND PHYSICAL INSIGHTS

A. Generalities

In what follows, for certain representative ENZ parameter configurations, we validate and calibrate the analytical solutions derived in Sec. III against a reference solution obtained via brute-force numerical quadrature of the spectral integral in Eq. (6) with the general transmission coefficient in Eq. (A1). We further discuss the imaging properties of the metamaterial slab for specific design parameters of interest. Our reference solution relies on Gaussian-type quadrature rules (cf. Sec. 25.4 in Ref. 41), with the number of nodes refined adaptively so as to guarantee a four-digit accuracy. It is worth pointing out that no particular attempt was made to optimize its numerical implementation, since a careful and thorough assessment of the computational convenience of CILHI-based solutions versus numerical spectral integration was already carried out in Ref. 43 (see also the discussion in Sec. III C1), and is therefore not the focus of our investigation here.

B. Numerical results and discussion

We start considering an ideal lossless configuration featuring a line source placed at a distance $x_s = \lambda_0/50$ away from a slab of thickness $d = 0.5\lambda_0$, and constitutive parameters $\varepsilon_v = 0$, $\varepsilon_\xi = -2$. Figure 3 shows the normalized Green's function intensity maps, within and beyond the image plane $x = d$, computed by using the reference solution [cf. Eq. (6)], for values of the optical axis angle α ranging from 0 to 75°. Similarly to what observed in Ref. 19, the images are maximally localized at the image plane $x = d$ and are

subject to a lateral displacement (of a quantity $y_\alpha = d \tan \alpha$) with respect to the source position ($y = 0$), which is in agreement with the fact that subwavelength details of the source are effectively transported with small distortion along the optical axis direction. As it can be observed, increasing values of the tilt angle α (i.e., of the lateral displacement) are accompanied by progressively worse localization properties (note the different color scales of the plots).

Figures 4 and 5 show the intensity profiles along the two principal cuts, namely, the image plane at the slab interface ($x = d$) and the orthogonal plane passing through the fiducial image position ($y_\alpha = d \tan \alpha$), respectively, comparing the reference solution [cf. Eq. (6), black-solid curves] with the CILHI-based analytical solutions in Eqs. (15) and (16) [with the parameters Λ and $\kappa_{1,2}$ given by Eq. (11)]. Along these cuts, it was possible to apply the small-argument approximation and derive Eq. (29). More specifically, both the "exact" (i.e., numerically computed as in Sec. III C1) and

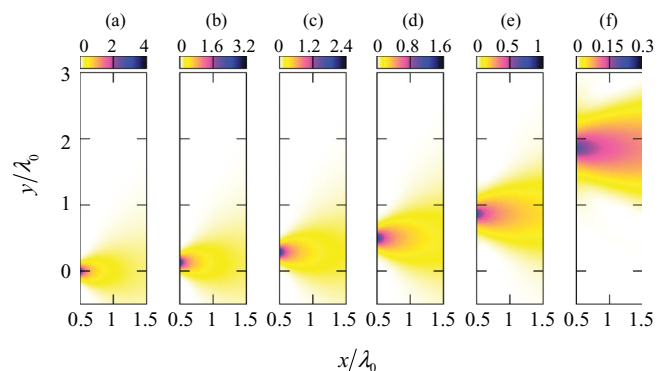


FIG. 3. (Color online) Normalized Green's function intensity maps (within and beyond the image plane $x = d$), for a source located $x_s = \lambda_0/50$ away from a slab of thickness $d = 0.5\lambda_0$, $\varepsilon_v = 0$, $\varepsilon_\xi = -2$, and the optical axis angle α varying from 0 (a) to 75° (f) with step of 15°, computed via the reference solution (cf. Ref. 6). Here and henceforth, intensities are normalized with respect to the peak intensity at the image plane in the absence of the slab, i.e., $|G_0^{(H)}(d, 0, x_s)|^2$ [cf. Eq. (4)].

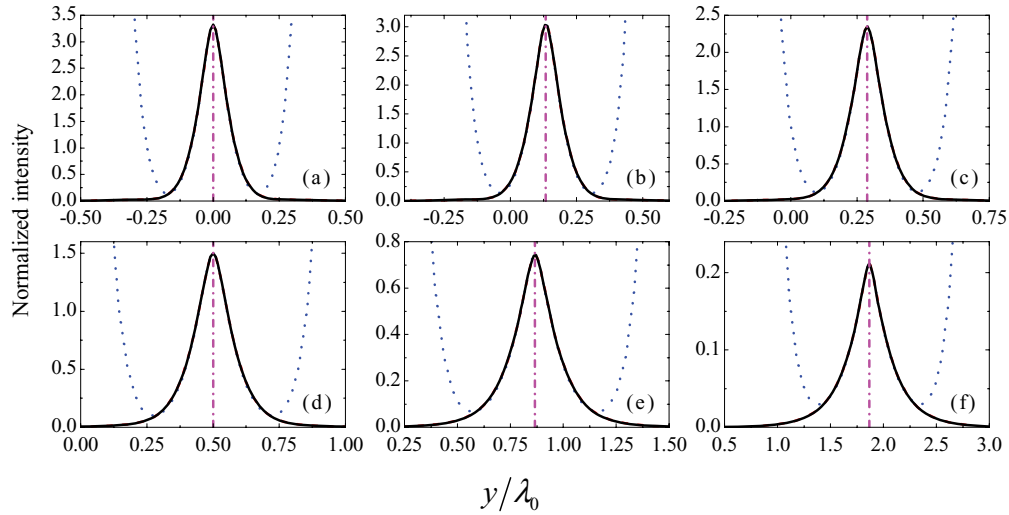


FIG. 4. (Color online) As in Fig. 3, but lateral cuts at the image plane $x = d$ (black solid curves) compared with the “exact” and small-argument-approximated CILHI-based analytical solutions (red dashed and blue dotted curves, respectively). The magenta dashed-dotted vertical lines indicate the fiducial positions $y_\alpha = d \tan \alpha$ of the laterally displaced images.

small-argument-approximated [cf. Eq. (29)] CILHIs are considered (red-dashed and blue-dotted curves, respectively). The “exact” CILHI-based solutions are practically indistinguishable from the reference solutions [cf. Eq. (6)] on the scale of the plots, whereas, as expected, the small-argument approximation breaks down away from the peak. These limitations are more evident in the orthogonal cuts (see Fig. 5), since the longitudinal localization is typically poorer. It is important to stress that, compared to a conventional focusing lens, the metamaterial slab is able to focus the transverse image well below the diffraction limit, but it is not very effective in focusing in the longitudinal plane. Effectively, as shown in Fig. 5, the subwavelength spot decays away from the slab with a conventional exponential drop, due to the diffraction of the high-wavenumber spectral components of the image transported to the back of the slab.

It is interesting to notice in Figs. 4 and 5 how the small-argument approximation is sufficient to correctly capture the

essential localization properties of the image, especially in the transverse direction. In what follows, for quantitative assessments, we consider two typical figures of merit: the *full-width-at-half-maximum* (FWHM) and the (normalized) peak intensity at the image plane $x = d$. Figure 6 compares the FWHM and (normalized) peak intensity, estimated via the reference solution [cf. Eq. (6), circular markers] and the small-argument CILHI-based analytical solution (square markers), as a function of α . Overall, a uniformly good agreement is observed, with maximum errors $<2\%$ in the FWHM and $<0.3\%$ in the peak intensity. Consistently with the visual impression from Figs. 3 and 4, both observables deteriorate with increasing values of α . More specifically, over the range $0 \leq \alpha \leq 75^\circ$, the FWHM increases from $\sim 0.12\lambda_0$ to $\sim 0.35\lambda_0$, while the (normalized) peak intensity decreases from ~ 3.3 to ~ 0.2 . To sum up, the ENZ configuration analyzed in this paper is able to transport, and laterally displace, subwavelength details of a source from the input to the

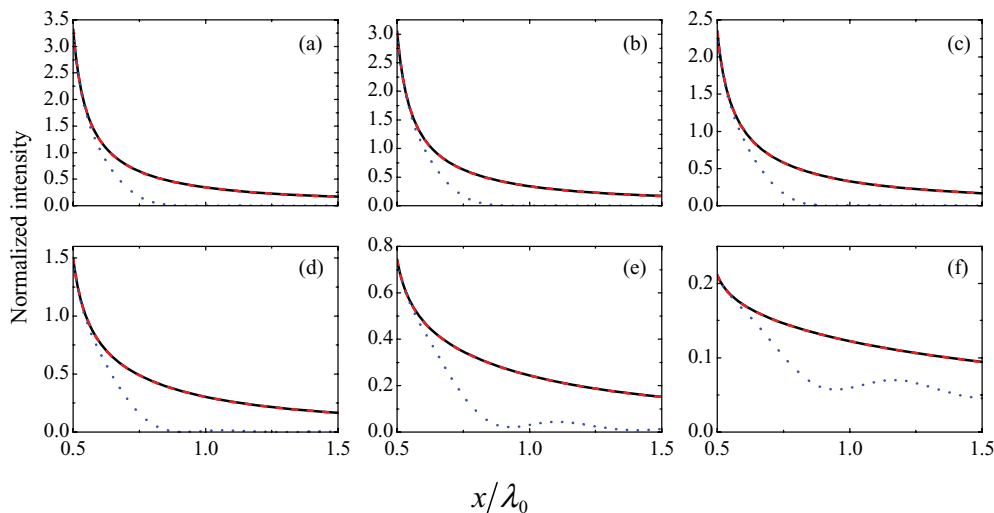


FIG. 5. (Color online) As in Fig. 4, but orthogonal cuts at the fiducial position of the image $y_\alpha = d \tan \alpha$.

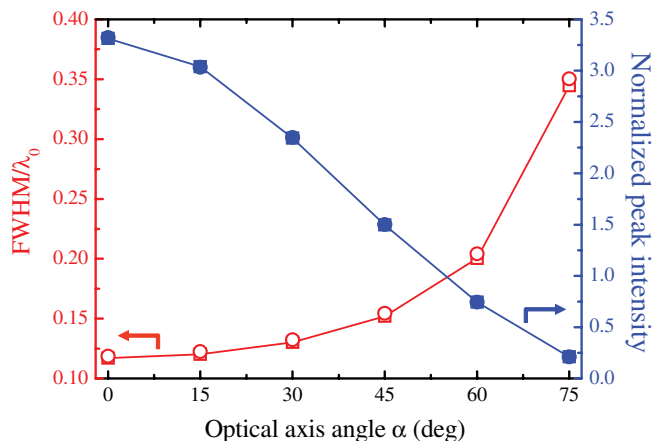


FIG. 6. (Color online) Parameters as in Fig. 4. FWHM (empty markers, left axis) and peak intensity (full markers, right axis) at the image plane $x = d$, estimated via the reference solution [cf. Eq. (6), circular markers] and the small-argument-approximated CILHI-based analytical solution (square markers), as a function of the optical axis angle α .

output slab interface, with resolutions as good as a tenth of a wavelength. However, large lateral displacements result in a large degradation of the image resolution and intensity. For instance, lateral displacements of nearly two wavelengths [cf. Figs. 3(f)–5(f)] may be attained at the expense of a factor ~ 3 in the resolution and over an order of magnitude in the intensity.

For the same configuration, and a fixed optical axis direction ($\alpha = 0$), Fig. 7 shows the two considered figures of merit as a function of ε_ξ in the hyperbolic-medium regime. As expected, recalling our discussion at the end of Sec. II A, the figures of merit improve for larger absolute values of ε_ξ . Conversely, they strongly deteriorate for $\varepsilon_\xi \rightarrow 0$. This is also not surprising, as it is well known that in the *isotropic* ENZ limit the slab becomes a highly selective spatial filter.⁴⁷ Also in these cases, the agreement between the reference solution [cf. Eq. (6)] and the small-argument CILHI-based analytical solution is very good, with same maximum errors as above.

Next, we assess the critical ENZ assumption underlying our analytical solution. It is well known that in practical implemen-

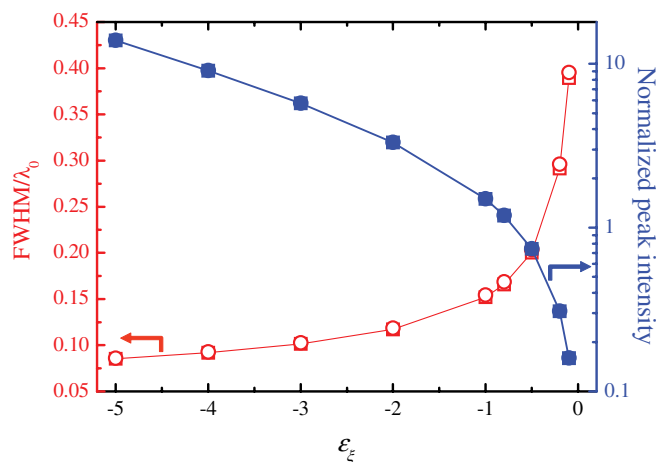


FIG. 7. (Color online) As in Fig. 6, but as a function of ε_ξ , for $\alpha = 0$. Note the logarithmic scale on the right axis.

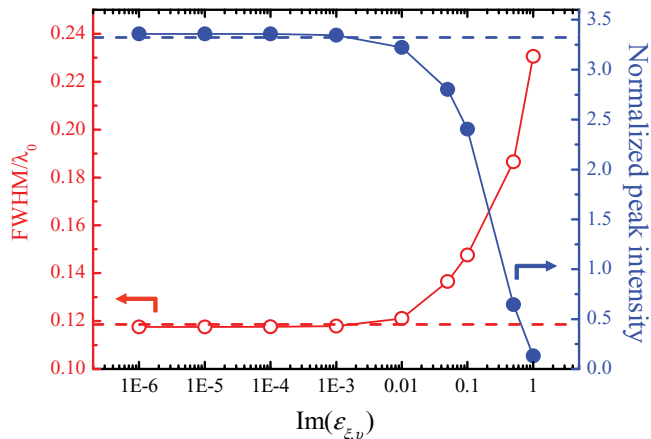


FIG. 8. (Color online) FWHM (empty markers, left axis) and peak intensity (full markers, right axis) at the image plane $x = d$, estimated via the reference solution [cf. Eq. (6)], for $x_s = \lambda_0/50$, $d = 0.5\lambda_0$, $\alpha = 0$, $\text{Re}(\varepsilon_\xi) = -2$, $\text{Re}(\varepsilon_\nu) = 10^{-3}$, as a function of $\text{Im}(\varepsilon_{\xi, \nu})$ (in logarithmic scale). Also shown (as horizontal dashed lines) are the corresponding estimates from the small-argument-approximated CILHI-based analytical solution.

tations (e.g., metallodielectric multilayers) the condition $\varepsilon_\nu = 0$ may only be approximately attained due to the presence of losses, and in any case limited to one single frequency point. While it is possible, in principle, to achieve a vanishing real part (at a given frequency), zeroing the imaginary part is prevented by unavoidable material losses. Nevertheless, recent studies⁴⁸ have demonstrated the promising potentials of *gain-assisted* nanocomposites for the synthesis of artificial materials with very small values ($\sim 10^{-2}$) of the real and imaginary parts of ε_ν . In order to assess the applicability of our proposed analytical solution to such regime, we consider a more realistic configuration with, $d = 0.5\lambda_0$, $\alpha = 0$, $\text{Re}(\varepsilon_\xi) = -2$, and a small but nonzero $|\varepsilon_\nu|$. More specifically, we assume $\text{Re}(\varepsilon_\nu) = 10^{-3}$, and let the imaginary parts of ε_ξ and ε_ν vary over several decades. Figure 8 shows the corresponding FWHM and peak intensity estimated via the reference solution [cf. Eq. (6)]. As expected, for asymptotically vanishing losses, they approach the estimates from our small-argument CILHI-based analytical solution (shown as horizontal dashed lines), and progressively depart from them for increased loss levels. In particular, for $\text{Im}(\varepsilon_{\xi, \nu}) = 10^{-2}$, the agreement is still satisfactory, with only a $\sim 2\%$ error in the FWHM and a $\sim 3\%$ error in the peak intensity. For $\text{Im}(\varepsilon_{\xi, \nu}) = 0.05$, the errors increase to $\sim 15\%$ and $\sim 16\%$, respectively, which may still be acceptable. Qualitatively similar trends were observed for different values of $\text{Re}(\varepsilon_\xi)$, as exemplified in Fig. 9. In this case, pertaining to $\text{Re}(\varepsilon_\xi) = -5$, the errors in the FWHM and peak intensity are $\sim 0.4\%$ and $\sim 1\%$, respectively, for $\text{Im}(\varepsilon_{\xi, \nu}) = 10^{-2}$, and $\sim 5\%$ and $\sim 9\%$, respectively, for $\text{Im}(\varepsilon_{\xi, \nu}) = 0.05$. From the physical point of view, our results indicate that the imaging properties of the ENZ anisotropic slabs considered here are quite robust to losses and frequency variations.

Overall, the above results also indicate that our proposed analytical solution accurately captures the essential image-formation properties in the scenario of interest, and it can be safely applied in low-loss scenarios.

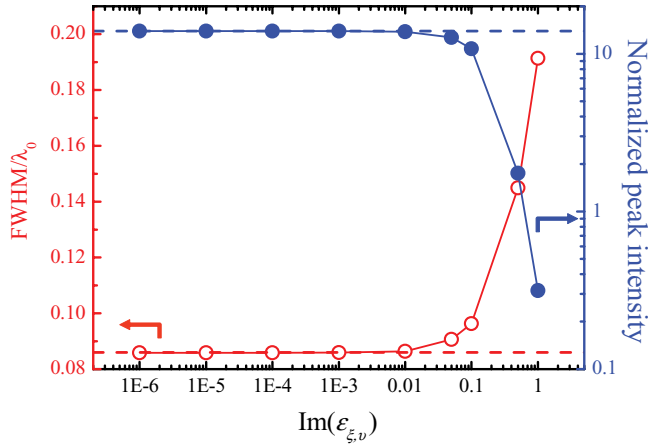


FIG. 9. (Color online) As in Fig. 8, but for $\text{Re}(\varepsilon_\xi) = -5$. Note also the logarithmic scale on the right axis.

V. CONCLUSIONS

In this paper, we have presented an analytical study of the subwavelength imaging properties of uniaxially anisotropic ENZ metamaterial slabs with tilted optical axis. In particular, we have derived a closed-form analytical solution for the 2D Green's function in terms of special cylindrical functions. These functions can be efficiently computed via well-established numerical schemes, yielding computational savings up to nearly three orders of magnitudes by comparison with brute-force numerical quadrature of the corresponding spectral integrals. Moreover, in the near-field parameter range of interest, they can be conveniently approximated in terms of simple analytical functions.

Validation and calibration of our results against a numerical-integration-based reference solution [cf. Eq. (6)] confirmed the applicability of our solution to subwavelength imaging scenarios with low-loss constitutive parameters that are within reach of current (e.g., gain-assisted) technologies. We have employed this solution to analyze the imaging properties of anisotropic ENZ metamaterial slabs varying the design parameters and tilt angle.

Current and future investigations are aimed at exploiting our proposed parametrization in design procedures and optimization schemes to improve the imaging capabilities of these devices. Also of interest are possible extensions to account for spatial-dispersion (nonlocal) effects as well as to predict the emission enhancement for quantum sources radiating in ENZ media.⁴⁹

ACKNOWLEDGMENT

A.A. acknowledges the support of the AFOSR YIP Grant No. FA9550-11-1-0009.

APPENDIX A: PERTAINING TO EQ. (7)

The plane-wave transmission coefficient of the uniaxial slab described by the permittivity tensor in Eq. (1) is computed by expanding the field inside the slab in terms of forward and backward plane waves (with conserved transverse wave vectors), and enforcing the phase-matching and

transverse-field-continuity conditions at the interfaces. For the assumed transverse-magnetic polarization, via cumbersome but straightforward algebra, we obtain the general expression

$$T(k_y) = \frac{2 \exp(ik_{x2}d) \varepsilon_{xx} k_x (\varepsilon_{xy}^2 - \varepsilon_{xx} \varepsilon_{yy}) (k_{x1} - k_{x2})}{U_1^-(k_y) U_2^+(k_y) - \exp[i(k_{x2} - k_{x1})d] U_1^+(k_y) U_2^-(k_y)}, \quad (\text{A1})$$

where

$$\varepsilon_{xx} = \varepsilon_\xi \cos^2 \alpha + \varepsilon_\nu \sin^2 \alpha, \quad (\text{A2a})$$

$$\varepsilon_{yy} = \varepsilon_\xi \sin^2 \alpha + \varepsilon_\nu \cos^2 \alpha, \quad (\text{A2b})$$

$$\varepsilon_{xy} = (\varepsilon_\xi - \varepsilon_\nu) \sin \alpha \cos \alpha \quad (\text{A2c})$$

represent the Cartesian components of the relative permittivity tensor in Eq. (1), and

$$k_{x1,2} = \frac{-\varepsilon_{xy} k_y \mp \sqrt{(\varepsilon_{xx} \varepsilon_{yy} - \varepsilon_{xy}^2)(\varepsilon_{xx} k_0^2 - k_y^2)}}{\varepsilon_{xx}}, \quad (\text{A3})$$

$$U_\zeta^\pm(k_y) = \varepsilon_{xy}^2 k_x - \varepsilon_{xx} (\varepsilon_{yy} k_x \pm \varepsilon_{xy} k_y) \mp \varepsilon_{xy} k_y, \quad \zeta = 1, 2. \quad (\text{A4})$$

It can readily be verified that the limit $\varepsilon_\nu \rightarrow 0$ leads to a 0/0 indeterminate form in Eq. (A1). In order to evaluate this limit, noting from Eq. (A3) that $k_{x1} \rightarrow k_{x2}$, it is expedient to linearize the exponential function in the denominator of Eq. (A1), viz.,

$$T(k_y) \approx \frac{2 \exp(ik_{x2}d) \varepsilon_{xx} k_x (\varepsilon_{xy}^2 - \varepsilon_{xx} \varepsilon_{yy}) (k_{x1} - k_{x2})}{U_1^-(k_y) U_2^+(k_y) - [1 + i(k_{x2} - k_{x1})d] U_1^+(k_y) U_2^-(k_y)}. \quad (\text{A5})$$

Next, via straightforward McLaurin expansions, we obtain for the various terms in Eq. (A5):

$$\begin{aligned} & \varepsilon_{xx} (\varepsilon_{xy}^2 - \varepsilon_{xx} \varepsilon_{yy}) (k_{x1} - k_{x2}) \\ & \sim 2(\varepsilon_\xi \varepsilon_\nu)^{\frac{3}{2}} \sqrt{k_0^2 \varepsilon_\xi \cos^2 \alpha - k_y^2} + O(\varepsilon_\nu^{\frac{5}{2}}), \end{aligned} \quad (\text{A6})$$

$$\begin{aligned} & U_1^-(k_y) U_2^+(k_y) - U_1^+(k_y) U_2^-(k_y) \\ & \sim 4(\varepsilon_\xi \varepsilon_\nu)^{\frac{3}{2}} k_x \sqrt{k_0^2 \varepsilon_\xi \cos^2 \alpha - k_y^2} + O(\varepsilon_\nu^{\frac{5}{2}}), \end{aligned} \quad (\text{A7})$$

$$\begin{aligned} & (k_{x2} - k_{x1}) U_1^+(k_y) U_2^-(k_y) \\ & \sim 2\sqrt{\varepsilon_\xi \varepsilon_\nu^{\frac{3}{2}}} (k_0^2 \varepsilon_\xi \cos^2 \alpha - k_y^2)^{\frac{3}{2}} \sec^2 \alpha + O(\varepsilon_\nu^2), \end{aligned} \quad (\text{A8})$$

with $O(\dots)$ denoting the Landau symbol. The limit in Eq. (7) readily follows by substituting Eqs. (A6)–(A8) into Eq. (A5), neglecting higher-order terms, and simplifying the dominant term $\varepsilon_\nu^{\frac{3}{2}}$.

APPENDIX B: DERIVATION OF THE GENERAL SOLUTION IN EQS. (15)–(18)

First, by rewriting the rational part of the integrand in Eq. (12) as

$$\begin{aligned} & \frac{1}{(k_x - \kappa_1)(k_x - \kappa_2)} \\ & = \frac{\kappa_1}{k_x(k_x - \kappa_1)(\kappa_1 - \kappa_2)} - \frac{\kappa_2}{k_x(k_x - \kappa_2)(\kappa_1 - \kappa_2)}, \end{aligned} \quad (\text{B1})$$

we obtain [cf. Eq. (15)] a different, generic canonical integral of the form

$$F(\zeta, \varphi) = \kappa \int_{-\infty}^{\infty} \frac{\exp \left[i\zeta \left(\frac{k_x}{k_0} \cos \varphi + \frac{k_y}{k_0} \sin \varphi \right) \right]}{k_x(k_x - \kappa)} dk_y \quad (\text{B2})$$

in the polar coordinates given by Eq. (14). In Ref. 50, closed-form calculation of spectral integrals of this type was carried out via rather cumbersome contour-integration techniques. In what follows, we rely on an alternative, relatively simpler, differential-equation-based procedure proposed in Ref. 51 (based on the work in Ref. 52). The basic idea is to construct an inhomogeneous differential equation (in the ζ variable) satisfied by the integral in Eq. (B2). To this aim, we apply to Eq. (B2) a second-order differential operator

$$\mathcal{D}_2[F](\zeta, \varphi) \equiv \left(\frac{\partial^2}{\partial \zeta^2} + \beta_1 \frac{\partial}{\partial \zeta} + \beta_0 \right) F(\zeta, \varphi) \quad (\text{B3a})$$

$$= \left[\beta_0 - \frac{k_x^2 \cos(2\varphi)}{k_0^2} - \sin^2 \varphi - \frac{k_x k_y \sin(2\varphi)}{k_0^2} + \frac{i\beta_1}{k_0} (k_x \cos \varphi + k_y \sin \varphi) \right] F(\zeta, \varphi), \quad (\text{B3b})$$

where β_0 and β_1 are φ -dependent coefficients and Eq. (B3b) follows from straightforward differentiation under the integral sign in Eq. (B2). Particularly expedient is to choose the coefficients as

$$\beta_0 = \sin^2 \varphi - \frac{\kappa^2}{k_0^2}, \quad \beta_1 = -\frac{2i\kappa \cos \varphi}{k_0}, \quad (\text{B4})$$

which allows recasting Eq. (B3) in a simplified form:

$$\begin{aligned} \mathcal{D}_2[F](\zeta, \varphi) &= \frac{[\kappa - k_x \cos(2\varphi) - k_y \sin(2\varphi)](k_x - \kappa)}{k_0^2} F(\zeta, \varphi) \\ &= \frac{\kappa[\kappa - k_x \cos(2\varphi) - k_y \sin(2\varphi)]}{k_0^2} \\ &\quad \times \int_{-\infty}^{\infty} \frac{\exp \left[i\zeta \left(\frac{k_x}{k_0} \cos \varphi + \frac{k_y}{k_0} \sin \varphi \right) \right]}{k_x} dk_y. \end{aligned} \quad (\text{B5b})$$

Recalling the spectral-integral representation of the zeroth-order Hankel function of the first kind [cf. Eq. (4b)],

$$\mathbf{H}_0^{(1)}(\zeta) = \int_{-\infty}^{\infty} \frac{\exp \left[i\zeta \left(\frac{k_x}{k_0} \cos \varphi + \frac{k_y}{k_0} \sin \varphi \right) \right]}{\pi k_x} dk_y, \quad (\text{B6})$$

the right-hand side of Eq. (B5) can be readily calculated, yielding

$$\begin{aligned} \mathcal{D}_2[F](\zeta, \varphi) &= \left(\frac{\pi \kappa^2}{k_0^2} \right) \mathbf{H}_0^{(1)}(\zeta) + \left(\frac{i\pi \kappa \cos \varphi}{k_0} \right) \frac{d\mathbf{H}_0^{(1)}(\zeta)}{d\zeta} \\ &\equiv F_0(\zeta, \varphi). \end{aligned} \quad (\text{B7})$$

We have thus demonstrated that the canonical integral in Eq. (B2) may be alternatively calculated by solving the second-order, inhomogeneous differential equation in Eq. (B7) [with \mathcal{D}_2 given in Eq. (B3a) with Eq. (B4)]. This can be accomplished in a systematic fashion by applying the method

of variation of parameters,⁵³ yielding

$$F(\zeta, \varphi) = A^+ \exp(a^+ \zeta) + A^- \exp(a^- \zeta) + Q^+(\zeta, \varphi) + Q^-(\zeta, \varphi), \quad (\text{B8})$$

where A^+ and A^- are integration constants to be determined (see Appendix C below),

$$a^\pm = -\frac{\beta_1}{2} \pm \sqrt{\frac{\beta_1^2}{4} - \beta_0} \quad (\text{B9})$$

are the roots of the characteristic equation, and

$$Q^\pm(\zeta, \varphi) = \frac{1}{(a^\pm - a^\mp)} \int_{\eta^\pm}^{\zeta} \exp[a^\pm(\zeta - \tau)] F_0(\tau, \varphi) d\tau \quad (\text{B10a})$$

$$= \frac{i\pi \kappa \cos \varphi}{k_0(a^\pm - a^\mp)} \mathbf{H}_0^{(1)}(\zeta) + \left[\frac{\pi \kappa (\kappa + ik_0 a^\pm \cos \varphi)}{k_0^2(a^\pm - a^\mp)} \right] \times \exp(a^\pm \zeta) \mathcal{H}e_0^{(1)}(a^\pm, \eta^\pm, \zeta) \quad (\text{B10b})$$

represents the particular solution, with the second equality following from Eq. (B7) [recalling Eq. (19)].

The general solution in Eqs. (15)–(18) immediately follows, by recalling Eq. (B1) and rearranging terms.⁵⁴

APPENDIX C: CALCULATION OF THE INTEGRATION CONSTANTS IN EQ. (21)

The φ -dependent integration constants $A_{1,2}^\pm$ in Eq. (21) can be determined by enforcing the proper boundary conditions (usually, at $\zeta = 0$ and for $\zeta \rightarrow \infty$). The general calculation procedure is rather involved, and depends on the sign of the real parts of the $a_{1,2}^\pm$ parameters in Eq. (17). For instance, if these real parts are all negative, the conditions for $\zeta \rightarrow \infty$ cannot be exploited, and one is led to enforce only the boundary conditions at $\zeta = 0$. However, the calculation becomes particularly cumbersome, as the functions $F_{1,2}$ in Eq. (16) are nondifferentiable at $\zeta = 0$. Nevertheless, for the near-field scenario of interest here, the calculation becomes particularly simple in the two principal planes of the image, namely $x = d$ and $y = d \tan \alpha$, which are the most interesting in order to assess the transverse and longitudinal localization.

More specifically, assuming $x_s = 0$ and $x = d$, we note that, from Eq. (17),

$$\text{Re}(a_{1,2}^-) = -\text{Re}(a_{1,2}^+) > 0. \quad (\text{C1})$$

Accordingly, Eq. (21a) readily follows by enforcing the regularity-at-infinity conditions

$$\lim_{\zeta \rightarrow \infty} F_{1,2}(\zeta, \varphi) = 0. \quad (\text{C2})$$

The remaining integration constants are computed by enforcing the conditions at $\zeta = 0$, viz.,

$$F_{1,2}(0, \varphi) = A_{1,2}^+ + \chi_{1,2}^+ \mathcal{H}e_0^{(1)}(a_{1,2}^+, \eta_{1,2}^+, 0) + \chi_{1,2}^- \mathcal{H}e_0^{(1)}(a_{1,2}^-, \eta_{1,2}^-, 0) \quad (\text{C3a})$$

$$= \kappa_{1,2} \int_{-\infty}^{\infty} \frac{1}{k_x(k_x - \kappa_{1,2})} dk_y = C_{1,2}, \quad (\text{C3b})$$

where the second equality follows from Eq. (B2), and the arising spectral integral admits the closed-form analytical solution given in Eq. (22). The above derivations also hold

approximately for source positions very close to the input slab interface ($x_s \ll \lambda_0$).

For observations along orthogonal planes passing through the fiducial image position ($y_d = 0$, i.e., $y = \tan \alpha$), we note from Eq. (17) that

$$a_{1,2}^- = a_{1,2}^+, \quad (\text{C4})$$

which basically means that there are only two effective integration constants to be determined. Accordingly, if $\text{Re}(a_{1,2}^\pm) < 0$, we can arbitrarily set $A_{1,2}^- = 0$ and proceed as above [cf. Eq. (C3)], so that the results in Eq. (21) hold for this case too. Otherwise, if $\text{Re}(a_{1,2}^\pm) \geq 0$, then the results in Eq. (25) readily follow from the regularity-at-infinity conditions.

*vgaldi@unisannio.it

- ¹J. B. Pendry, *Phys. Rev. Lett.* **85**, 3966 (2000).
- ²Z. Liu, N. Fang, T.-J. Yen, and X. Zhang, *Appl. Phys. Lett.* **83**, 5184 (2003).
- ³D. Melville and R. Blaikie, *Opt. Express* **13**, 2127 (2005).
- ⁴N. Fang, H. Lee, C. Sun, and X. Zhang, *Science* **308**, 534 (2005).
- ⁵S. A. Ramakrishna, J. B. Pendry, M. C. K. Wiltshire, and W. J. Stewart, *J. Mod. Opt.* **50**, 1419 (2003).
- ⁶S. A. Ramakrishna and J. B. Pendry, *Phys. Rev. B* **67**, 201101(R) (2003).
- ⁷W. Cai, D. A. Genov, and V. M. Shalaev, *Phys. Rev. B* **72**, 193101 (2005).
- ⁸B. Wood, J. B. Pendry, and D. P. Tsai, *Phys. Rev. B* **74**, 115116 (2006).
- ⁹K. J. Webb and M. Yang, *Opt. Lett.* **31**, 2130 (2006).
- ¹⁰A. Salandrino and N. Engheta, *Phys. Rev. B* **74**, 075103 (2006).
- ¹¹P. A. Belov and Y. Hao, *Phys. Rev. B* **73**, 113110 (2006).
- ¹²X. Li, S. He, and Y. Jin, *Phys. Rev. B* **75**, 045103 (2007).
- ¹³P. A. Belov, Y. Zhao, Y. Hao, and C. Parini, *Opt. Lett.* **34**, 527 (2009).
- ¹⁴B. Zeng, X. Yang, C. Wang, Q. Feng, and X. Luo, *J. Opt.* **12**, 035104 (2010).
- ¹⁵R. Kotynski and T. Stefaniuk, *Opt. Lett.* **35**, 1133 (2010).
- ¹⁶Y. Jin, *Prog. Electromagn. Res. (PIER)* **105**, 347 (2010).
- ¹⁷H. Liu and K. J. Webb, *Opt. Lett.* **35**, 1869 (2010).
- ¹⁸R. Kotynski, T. Stefaniuk, and A. Pastuszczyk, *Appl. Phys. A* **103**, 905 (2011).
- ¹⁹J. Wang, H. Y. Dong, K. H. Fung, T. J. Cui, and N. X. Fang, *Opt. Express* **19**, 16809 (2011).
- ²⁰A. Alù and N. Engheta, *Phys. Rev. E* **72**, 016623 (2005).
- ²¹D. S. Filonov, A. P. Slobozhanyuk, P. A. Belov, and Y. S. Kivshar, *Phys. Status Solidi RRL* **6**, 46 (2012).
- ²²D. C. Adams, S. Inampudi, T. Ribardo, D. Slocum, S. Vangala, N. A. Kuhta, W. D. Goodhue, V. A. Podolskiy, and D. Wasserman, *Phys. Rev. Lett.* **107**, 133901 (2011).
- ²³K. Halterman, S. Feng, and V. C. Nguyen, *Phys. Rev. B* **84**, 075162 (2011).
- ²⁴A. A. Asatryan, L. C. Botten, M. A. Byrne, V. D. Freilikher, S. A. Gredeskul, I. V. Shadrivov, R. C. McPhedran, and Y. S. Kivshar, *Phys. Rev. B* **85**, 045122 (2012).
- ²⁵S. Feng, *Phys. Rev. Lett.* **108**, 193904 (2012).
- ²⁶C. Argyropoulos, P. Y. Chen, G. D'Aguzzo, N. Engheta, and A. Alù, *Phys. Rev. B* **85**, 045129 (2012).
- ²⁷C. Argyropoulos, P. Y. Chen, F. Monticone, G. D'Aguzzo, and A. Alù, *Phys. Rev. Lett.* **108**, 263905 (2012).
- ²⁸P. A. Belov, C. R. Simovski, and P. Ikonen, *Phys. Rev. B* **71**, 193105 (2005).
- ²⁹P. A. Belov, Y. Hao, and S. Sudhakaran, *Phys. Rev. B* **73**, 033108 (2006).
- ³⁰P. A. Belov and M. G. Silveirinha, *Phys. Rev. E* **73**, 056607 (2006).
- ³¹M. Tsang and D. Psaltis, *Phys. Rev. B* **77**, 035122 (2008).
- ³²W. Yan, M. Yan, and M. Qiu, *J. Opt. Soc. Am. B* **26**, B39 (2009).
- ³³I. Gallina, G. Castaldi, V. Galdi, A. Alù, and N. Engheta, *Phys. Rev. B* **81**, 125124 (2010).
- ³⁴J. Elser, V. A. Podolskiy, I. Salakhutdinov, and I. Avrutsky, *Appl. Phys. Lett.* **90**, 191109 (2007).
- ³⁵A. A. Orlov, P. M. Voroshilov, P. A. Belov, and Y. S. Kivshar, *Phys. Rev. B* **84**, 045424 (2011).
- ³⁶G. Castaldi, V. Galdi, A. Alù, and N. Engheta, *Phys. Rev. Lett.* **108**, 063902 (2012).
- ³⁷P. A. Belov, R. Marques, S. I. Maslovski, I. S. Nefedov, M. Silveirinha, C. R. Simovski, and S. A. Tretyakov, *Phys. Rev. B* **67**, 113103 (2003).
- ³⁸C. R. Simovski and P. A. Belov, *Phys. Rev. E* **70**, 046616 (2004).
- ³⁹R. J. Pollard, A. Murphy, W. R. Hendren, P. R. Evans, R. Atkinson, G. A. Wurtz, A. V. Zayats, and V. A. Podolskiy, *Phys. Rev. Lett.* **102**, 127405 (2009).
- ⁴⁰A. Sihvola, *Electromagnetic Mixing Formulas and Applications* (IEE Publishing, London, UK, 1999).
- ⁴¹M. Abramowitz and I. A. Stegun, *Handbook of Mathematical Functions*, 9th ed. (Dover, New York, 1970).
- ⁴²L. B. Felsen and N. Marcuvitz, *Radiation and Scattering of Waves* (IEEE-Wiley, Piscataway, NJ, 1994).
- ⁴³Z. Zhu, S. L. Dvorak, D. L. Heckmann, and J. L. Prince, *Radio Sci.* **40**, 1 (2005).
- ⁴⁴M. M. Agrest and M. S. Maksimov, *Theory of Incomplete Cylindrical Functions and Their Applications* (Springer, New York, 1971).
- ⁴⁵S. L. Dvorak, *IEEE Antennas Propagat. Mag.* **36**, 26 (1994).
- ⁴⁶G. A. Baker Jr. and P. Graves-Morris, *Padé Approximants* (Cambridge University Press, Cambridge, 1996).
- ⁴⁷A. Alù, M. G. Silveirinha, A. Salandrino, and N. Engheta, *Phys. Rev. B* **75**, 155410 (2007).
- ⁴⁸C. Rizza, A. Di Falco, and A. Ciattoni, *Appl. Phys. Lett.* **99**, 221107 (2011).
- ⁴⁹H. N. S. Krishnamoorthy, Z. Jacob, E. Narimanov, I. Kretzschmar, and V. M. Menon, *Science* **336**, 205 (2012).
- ⁵⁰S. L. Dvorak, *IEEE Trans. Microwave Theory Tech.* **42**, 2164 (1994).
- ⁵¹S. L. Dvorak and D. G. Dudley, *IEEE Trans. Electromagn. Compat.* **37**, 192 (1995).
- ⁵²M. Wu, R. G. Olsen, and S. W. Plate, *J. Electromagn. Waves Appl.* **4**, 479 (1990).
- ⁵³E. A. Coddington and N. Levinson, *Theory of Ordinary Differential Equations* (McGraw-Hill, New York, 1955).
- ⁵⁴Note that the $H_0^{(1)}$ terms in Eq. (B10b) cancel out when substituted into Eq. (B8).