



University of Pennsylvania
ScholarlyCommons

Departmental Papers (MEAM)

Department of Mechanical Engineering & Applied
Mechanics

2-2010

Material Properties of *Caenorhabditis Elegans* Swimming at Low Reynolds Number

Josué Sznitman
University of Pennsylvania

Prashant Kishore Purohit
University of Pennsylvania, purohit@seas.upenn.edu

Predrag Krajacic
University of Pennsylvania, predrag@mail.med.upenn.edu

Samuel Todd Lamitina
University of Pennsylvania, lamitina@mail.med.upenn.edu

Paulo E. Arratia
University of Pennsylvania, parratia@seas.upenn.edu

Follow this and additional works at: http://repository.upenn.edu/meam_papers

 Part of the [Biomechanical Engineering Commons](#)

Recommended Citation

Sznitman, Josué; Purohit, Prashant Kishore; Krajacic, Predrag; Lamitina, Samuel Todd; and Arratia, Paulo E., "Material Properties of *Caenorhabditis Elegans* Swimming at Low Reynolds Number" (2010). *Departmental Papers (MEAM)*. 166.
http://repository.upenn.edu/meam_papers/166

Suggested Citation:

J. Sznitman, Prashant K. Purohit, P. Krajacic, T. Lamitina, P.E. Arratia, Material Properties of *Caenorhabditis elegans* Swimming at Low Reynolds Number, *Biophysical Journal*, Volume 98, Issue 4, 17 February 2010, Pages 617-626, DOI: 10.1016/j.bpj.2009.11.010.

This paper is posted at ScholarlyCommons. http://repository.upenn.edu/meam_papers/166
For more information, please contact libraryrepository@pobox.upenn.edu.

Material Properties of *Caenorhabditis Elegans* Swimming at Low Reynolds Number

Abstract

Undulatory locomotion, as seen in the nematode *Caenorhabditis elegans*, is a common swimming gait of organisms in the low Reynolds number regime, where viscous forces are dominant. Although the nematode's motility is expected to be a strong function of its material properties, measurements remain scarce. Here, the swimming behavior of *C. elegans* is investigated in experiments and in a simple model. Experiments reveal that nematodes swim in a periodic fashion and generate traveling waves that decay from head to tail. The model is able to capture the experiments' main features and is used to estimate the nematode's Young's modulus E and tissue viscosity η . For wild-type *C. elegans*, we find $E \approx 3.77$ kPa and $\eta \approx -860$ Pa•s; values of η for live *C. elegans* are negative because the tissue is generating rather than dissipating energy. Results show that material properties are sensitive to changes in muscle functional properties, and are useful quantitative tools with which to more accurately describe new and existing muscle mutants.

Disciplines

Biomechanical Engineering | Engineering | Mechanical Engineering

Comments

Suggested Citation:

J. Sznitman, Prashant K. Purohit, P. Krajacic, T. Lamitina, P.E. Arratia, Material Properties of *Caenorhabditis elegans* Swimming at Low Reynolds Number, *Biophysical Journal*, Volume 98, Issue 4, 17 February 2010, Pages 617-626, DOI: 10.1016/j.bpj.2009.11.010.

Material properties of *Caenorhabditis elegans* swimming at low Reynolds number

J. Sznitman^{1*}, Prashant K. Purohit¹, P. Krajacic², T. Lamitina², and P.E. Arratia^{1†}

¹*Department of Mechanical Engineering & Applied Mechanics,*

University of Pennsylvania, Philadelphia, PA 19104, USA and

²*Department of Physiology, University of Pennsylvania, Philadelphia, PA 19104, USA*

Abstract: Undulatory locomotion, as seen in the nematode *Caenorhabditis elegans*, is a common swimming gait of organisms in the low Reynolds number regime, where viscous forces are dominant. While the nematode's motility is expected to be a strong function of its material properties, measurements remain scarce. Here, the swimming behavior of *C. elegans* are investigated in experiments and in a simple model. Experiments reveal that nematodes swim in a periodic fashion and generate traveling waves which decay from head to tail. The model is able to capture the experiments' main features and is used to estimate the nematode's Young's modulus E and tissue viscosity η . For wild-type *C. elegans*, we find $E \approx 3.77$ kPa and $\eta \approx -860$ Pa·s; values of η for live *C. elegans* are negative because the tissue is generating rather than dissipating energy. Results show that material properties are sensitive to changes in muscle functional properties, and are useful quantitative tools with which to more accurately describe new and existing muscle mutants.

I. INTRODUCTION

Motility analysis of model organisms, such as the nematode *Caenorhabditis elegans* (*C. elegans*), is of great scientific and practical interest. It can provide, for example, a powerful tool for the analysis of genetic diseases in humans such as muscular dystrophy (MD) [1, 2, 3] since *C. elegans* have muscle cells that are highly similar in both anatomy and molecular

* Present address: Department of Mechanical & Aerospace Engineering, Princeton University, Princeton NJ 08544, USA

†Electronic address: parratia@seas.upenn.edu

makeup to vertebrate skeletal muscles [4, 5]. Due to the nematode’s small size ($L \approx 1$ mm), the motility of *C. elegans* swimming in a simple, Newtonian fluid is usually investigated in the low Reynolds numbers (Re) regime, where linear viscous forces dominate over nonlinear inertial forces [6, 7]. At low Re , locomotion results from non-reciprocal deformations to break time-reversal symmetry [8]; this is the so-called “scallop theorem” [9]. Experimental observations have shown that motility of swimming nematodes including *C. elegans* results from the propagation of bending waves along the nematode’s body length [10, 11, 12]. These waves consist of alternating phases of dorsal and ventral muscle contractions driven by the neuromuscular activity of muscle cells. While it is generally accepted that during locomotion the nematode’s tissues obey a viscoelastic reaction [13, 14, 15], quantitative data on *C. elegans*’ material properties such as tissue viscosity and Young’s modulus remain largely unexplored.

Motility behavior of *C. elegans* is a strong function of its body material properties. Recent investigations have provided valuable data on *C. elegans*’ motility, such as velocity, bending frequency, and body wavelength [11, 12, 13, 16, 17, 18]. However, only recently have the nematode’s material properties been probed using piezoresistive cantilevers [19]. Such invasive measurements provided Young’s modulus values of the *C. elegans*’ cuticle on the order of 400 MPa; this value is closer to stiff rubber than to soft tissues.

In this paper, we investigate the motility of *C. elegans* in both experiments and in a model in order to estimate the nematode’s material properties. Experiments show that nematodes swim in a highly periodic fashion and generate traveling waves which decay from head to tail. A dynamic model is proposed based on force and moment (torque) balance. A simplified version of the model is able to capture the main features of the experiments such as the traveling waves and their decay. The model is used to estimate both the Young’s modulus and tissue viscosity of *C. elegans*. Such estimates are used to characterize motility phenotypes of healthy nematodes and mutants carrying muscular dystrophy (MD).

II. EXPERIMENTAL METHODS

Experiments are performed by imaging *C. elegans* using standard microscopy and a high-speed camera at 125 frames per second. We focus our analysis on forward swimming in shallow channels to minimize three-dimensional motion. Channels are machined in acrylic

and are 1.5 mm wide and 500 μm deep; they are sealed with a thin (0.13 mm) cover glass. Channels are filled with an aqueous solution of M9 buffer [20], which contains 5 to 10 nematodes. The buffer viscosity μ and density ρ are 1.1 cP and 1.0 g/cm³, respectively. Under such conditions, the Reynolds number, defined as $Re = \rho UL/\mu$, is less than unity, where U and L are the nematode's swimming speed and length, respectively.

In Fig. 1(a), we display nematode tracking data over multiple bending cycles for a healthy, wild-type nematode. Results show that the nematode swims with an average speed $\langle U \rangle = 0.45$ mm/s and with a beating pattern of period $T = 0.46$ s. This periodic behavior is also qualitatively observed in the motion of the nematode tail (Fig. 1a); see also Video 1 (Supplementary Material). Under such conditions, $Re \approx 0.4$. Snapshots of the nematode skeletons over one beating cycle (Fig. 1b) reveal an envelope of well-confined body postures with a wavelength of approximately 1 mm, which corresponds nearly to the nematode's body length. The displacement amplitudes at the head and tail are similar with 465 μm and 400 μm , respectively. However, the amplitudes of the curvature at the head and tail differ sharply with approximately 6.07 mm⁻¹ and 2.21 mm⁻¹, respectively. The tail/head curvature ratio of 0.36 suggests that the bending motion is initiated at the head.

Extensive genetic analysis in *C. elegans* has identified numerous mutations affecting nematode motility. One such mutant, *dys-1*, encodes a homolog of the human dystrophin protein, which is mutated in Duchenne's and Becker's muscular dystrophy (MD). Using qualitative observation, *dys-1* mutants have an extremely subtle movement defect [21], which includes slightly exaggerated head bending and time-dependent decay in movement. The quantitative imaging platform presented here is able to robustly differentiate between wild type and *dys-1* mutants, as shown in Fig. 1(c) and Video 2 (Supplementary Material).

Results show that the *dys-1* mutant swims with an average speed $\langle U \rangle = 0.17$ mm/s and $Re \approx 0.15$; both values are significantly smaller than for the wild-type nematode. Although the *dys-1* mutant suffers from severe motility defects [21], it still moves in a highly periodic fashion with $T = 0.63$ s. Snapshots of nematode skeletons over one beating cycle (Fig. 1d) also reveal an envelope of well-confined body postures with a wavelength corresponding to the nematode's body length. The *dys-1* mutant exhibits a tail/head curvature ratio of 0.23, which is similar to the value found for wild type nematodes. However, the corresponding displacement amplitudes of the mutant are much smaller than those observed for the wild-type (Fig. 1b). The displacement amplitudes at the head and tail are 330 μm and 155 μm ,

respectively. This observation suggests that the *dys-1* mutant body, and in particular the tail, are becoming inactive as the bending motion is not able to deliver as much body displacement.

To further characterize the motility of *C. elegans*, we measure the curvature $\kappa(s, t) = d\phi/ds$ along the nematode's body (Fig. 2a). Here, ϕ is the angle made by the tangent to the x -axis at each point along the centerline and s is the arc-length coordinate spanning the nematode's head ($s = 0$) to its tail ($s = L$). The spatio-temporal evolution of κ for a swimming nematode is shown in Fig. 2(a). Approximately 6 bending cycles are illustrated and curvature values are color-coded; red and blue represent positive and negative values of κ , respectively. The y -axis in Fig. 2(a) corresponds to the non-dimensional body position s/L . The contour plot shows the existence of highly periodic, well-defined diagonally oriented lines. These diagonal lines are characteristic of bending waves, which propagate in time along the body length. Note that as the wave travels along the nematode body, *the magnitude of κ decays from head to tail*. Such behavior contrasts sharply with that observed for undulatory swimmers of the inertial regime (e.g. eel, lamprey), where amplitudes of body displacement grow instead from head to tail [22, 23].

The body bending frequency (f) is obtained from the one-dimensional Fast Fourier Transform (FFT) of the curvature field κ at multiple body positions s/L (Fig. 2b). Here, the body bending frequency is defined as $f = \omega/2\pi$. The angular frequency ω is calculated by first extracting multiple lines from the curvature field at distinct body positions s/L , and then computing the one-dimensional FFT. The wave speed c is extracted from the slope of the curvature κ propagating along the nematode's body; the wavelength λ is computed from the expression $\lambda = c/f$. A single frequency peak $f = 2.17 \pm 0.18$ Hz ($n = 25$) is found in the Fourier spectrum, where n is the number of nematodes. This single peak is irrespective of body position and corresponds to a wave speed $c = 2.14 \pm 0.16$ mm/s.

III. MATHEMATICAL METHODS

The swimming motion of *C. elegans* is modeled as a slender body in the limit of low Reynolds numbers (Re) [24, 25, 26]. This model is later used to estimate the material properties of *C. elegans*. We assume that the nematode is inextensible [26]; the uncertainty in the measured body lengths is less than 3%. The nematode's motion is restricted to the

xy -plane and is described in terms of its center-line $y(s, t)$, where s is the arc-length along the filament [27]. The swimming *C. elegans* experiences no net total force or torque (moments) such that, in the limit of low Re , the dynamic equations of motion are

$$\frac{\partial \vec{F}}{\partial s} = C_t \vec{u}_t + C_n \vec{u}_n, \quad (1)$$

$$\frac{\partial M}{\partial s} = -[F_y \cos(\phi) - F_x \sin(\phi)]. \quad (2)$$

In Eq. (1), $\vec{F}(s, t)$ is the internal force in the nematode, C_i is the drag coefficient experienced by the nematode, \vec{u}_i is the nematode velocity, and the subscripts t and n correspond to the tangent and normal directions, respectively. The drag coefficients C_t and C_n are obtained from slender body theory [26]. Due to the finite confinement of nematodes between parallel walls, corrections for wall effects on the resistive coefficients are estimated for slender cylinders [7, 28].

In Eq. (2), $M = M_p + M_a$, where M_p is a passive moment and M_a is an active moment generated by the muscles of the nematode; the active and passive moments are parts of a total internal moment [13, 14]. The passive moment is given by the Voigt model [15] such that $M_p = EI\kappa + \eta_p I(\partial\kappa/\partial t)$, where I is the second moment of inertia of the nematode cross section. The Voigt model is one of the simplest models for muscle and is extensively used in the literature [29]. Qualitatively, the elastic part of the Voigt model is represented by a spring of stiffness E while the dissipative part of the Voigt model is represented by a dashpot filled with a fluid of viscosity η_p (Fig. 3). Here, we assume two homogeneous *effective* material properties, namely (i) a constant Young's modulus E and (ii) a constant tissue viscosity η_p .

The active moment generated by the muscle is given by $M_a = -(EI\kappa_a + \eta_a I \partial\kappa/\partial t)$, where κ_a is a space and time dependent preferred curvature produced by the muscles of the nematode and η_a is a positive constant [30]. A simple form for κ_a can be obtained by assuming that κ_a is a sinusoidal function of time with an amplitude that decreases from the nematode's head to its tail (see Appendix). Note that if $\eta = \eta_p - \eta_a > 0$, there is net dissipation of energy in the tissue; conversely, if $\eta = \eta_p - \eta_a < 0$, there is net generation of energy in the tissue. Experiments have shown that the force generated by active muscle decreases with increasing velocity of shortening [29], so that the force-velocity curve for active muscle has a negative slope (Fig. 3). Such *negative* viscosity has been derived by a

mathematical analysis of the kinetics of the mechano-chemical reactions in the cross-bridge cycle of active muscles [30]. For live nematodes, we expect $\eta = \eta_p - \eta_a < 0$ because the net energy produced in the (muscle) tissue is needed to overcome the drag from the surrounding fluid.

Equations (1) and (2) are simplified by noting that the nematode moves primarily in the x -direction (see Video 1, S.M.) and that the deflections of its centerline from the x -axis are small. In such case, $s \approx x$ and $\cos(\phi) \approx 1$. This results in a linearized set of equations given by

$$\frac{\partial F_y}{\partial x} - C_n \frac{\partial y}{\partial t} = 0, \quad (3)$$

$$\frac{\partial M}{\partial x} + F_y = 0. \quad (4)$$

Differentiating Eq. (4) with respect to x and combining with Eq. (3), we obtain

$$\frac{\partial^2 M}{\partial x^2} + C_n \frac{\partial y}{\partial t} = 0. \quad (5)$$

Substituting for $M(x, t)$ in terms of $\kappa(x, t)$ and its time derivative yields a bi-harmonic equation for the displacement $y(x, t)$ of the type

$$\frac{\partial^4 y}{\partial x^4} + \xi \frac{\partial y}{\partial t} = 0, \quad (6)$$

which can be solved analytically for appropriate boundary conditions, where ξ is a constant that depends on the nematode's material properties and the fluid drag coefficient (see Appendix).

The boundary conditions are such that both the force and moment at the nematode's head and tail are equal to zero. That is, $F_y(0, t) = F_y(L, t) = 0$ and $M(0, t) = M(L, t) = 0$. Note that the zero moment boundary conditions at the head and tail imply that $EI\kappa(0, t) + \eta I(\partial\kappa(0, t)/\partial t) = EI\kappa_a(0, t)$ and $EI\kappa(L, t) + \eta I(\partial\kappa(L, t)/\partial t) = EI\kappa_a(L, t)$.

Experiments show that the curvature κ has non-zero amplitudes (Fig. 2a) both at the head ($x = 0$) and the tail ($x = L$). In order to capture this observation, we assume that $\kappa_a(x, t)$ is a sinusoidal wave with decreasing amplitude of the form $\kappa_a(x, t) = Q_0 \cos \omega t + Q_1 x \cos(\omega t - B)$, where Q_0 , Q_1 and B are inferred from the experiments. Note that if the curvature amplitude

at the head is larger than that at the tail, then the nematode swims forward. Conversely, if the curvature amplitude is smaller at the head than at the tail, the nematode swims backward; if the amplitudes are equal at the head and tail then it remains stationary. We note, however, that other forms of the preferred curvature κ_a are possible and could replicate the behavior seen in experiments.

IV. RESULTS & DISCUSSION

Equation (6) is solved for the displacement $y(x, t)$ in order to obtain the curvature $\kappa(x, t) = \partial^2 y / \partial x^2$. The solution for $y(x, t)$ is a superposition of four traveling waves of the general form $A_i \exp(-\beta x \cos P_i) \cos(\beta x \sin P_i - \omega t - \phi_i)$ where $\beta = (C_n \omega / K_b)^{1/4}$ and P_i is a function of the phase angle ψ . The amplitude A_i and phase ϕ_i are constants to be determined by enforcing the boundary conditions discussed above (see Appendix). The solution reveals both the traveling bending wave and the characteristic decay in κ , as seen in experiments. Note that our formulation does not assume a wave-functional form for $\kappa(x, t)$. Rather the wave is obtained as part of the solution.

Next, the curvature amplitude $|\kappa(x)|$ predicted by the model is fitted to those obtained from experiment to estimate the bending modulus $K_b = I \sqrt{E^2 + \omega^2 \eta^2}$ and the phase angle $\psi = \tan^{-1}(\eta \omega) / E$. The nematode is assumed to be a hollow, cylindrical shell [19, 31] such that $I = \pi((r_m + t/2)^4 - (r_m - t/2)^4) / 4$, where the mean nematode radius $r_m \approx 35 \mu\text{m}$ and the cuticle thickness $t \approx 0.5 \mu\text{m}$ [32]. For the population of wild-type *C. elegans* tested here ($n = 25$), the best fit values are $K_b = 4.19 \times 10^{-16} \pm 0.49 \times 10^{-16} \text{ Nm}^2$ and $\psi = -45.3^\circ \pm 3.0^\circ$. In Fig. 4, the experimental values of $|\kappa(x)|$ along the body of a wild-type *C. elegans* are displayed together with theoretical values of $|\kappa(x)|$, which are obtained by using the best fit value of the bending modulus for this nematode and by changing the phase angle from $\psi = 0^\circ$ to $\psi = -90^\circ$. Figure 4 shows that the model is able to capture the decay in $|\kappa|$ as a function of body length and the nematode's viscoelastic behavior.

The values of Young's modulus E and tissue viscosity η can now be estimated based on the values of ψ and K_b discussed above. Results show that, for the wild-type nematodes, $E = 3.77 \pm 0.62 \text{ kPa}$ and $\eta = -860.2 \pm 99.4 \text{ Pa}\cdot\text{s}$. The estimated value of E lies in the range of values of tissue elasticity measured for isolated brain (0.1 – 1 kPa) and muscle cells (8 – 17 kPa) [33]. The values of η for live *C. elegans* are negative because the tissue

is generating rather than dissipating energy [30, 34, 35, 36]. We note, however, that the absolute values of tissue viscosity $|\eta|$ are within the range ($10^2 - 10^4$ Pa·s) measured for living cells [37, 38]. In order to determine whether the nematode’s material properties can be extracted reliably from shape measurements alone, experiments in solutions of different viscosities were conducted [39]. The inferred Young’s modulus and effective tissue viscosity remain constant for up to a 5-fold increase in the surrounding fluid viscosity (or mechanical load).

The nematode’s curvature $\kappa(x, t)$ is now determined from the estimated values of E and η . Figure 2(c) shows a typical curvature $\kappa(x, t)$ contour plot obtained from the solution of the above equations using the estimated values of E and η . While the influence of nonlinearities is neglected for the scope of the present paper, the analytical results show that our linearized model, while not perfect, is nevertheless able to capture the main features observed in experiments (Fig. 2d).

Next, the method described above is used to quantify motility phenotypes of three distinct mutant MD strains (see Table 1 in Supplementary Material): one with a well-characterized muscle defect (*dys-1;hlh-1*); one with a qualitatively subtle movement defect (*dys-1*), and one mutant that has never been characterized with regards to motility phenotypes but is homologous to a human gene that causes a form of muscular dystrophy expressed in nematode muscle (*fer-1*). Note that while both *fer-1* and *dys-1* genes are expressed in *C. elegans* muscle, they exhibit little, if any, change in whole nematode motility under standard lab assays [40].

Figure 5 displays results of both kinematics (5a) and tissue material properties (5b) for all nematodes investigated here. Quantitative results are summarized in Table 1 (Supplementary Material). We find that all three mutants exhibit significant changes in both motility kinematics and tissue properties. For example, *fer-1* mutants exhibit defects in motility kinematics which are not found with standard assays [40]. Specifically, both the maximum amount of body curvature attained in *fer-1* mutants is increased by $\sim 5\%$, and the rate of curvature decay along the body is increased by $\sim 5\%$ (Fig. 5a). This data show that *fer-1(hc24)* mutants exhibit small yet noteworthy defects in whole nematode motility and exhibit an *uncoordinated* (*unc*) phenotype. In comparison, kinematics data on *dys-1;hlh-1* show that body curvature at the head of such mutant nematodes increases by $\sim 70\%$ compared to wild-type nematodes, while the rate of decay along the body is increased by

approximately $\sim 40\%$. These results are useful to quantify the paralysis seen earlier in the tail motion of such MD mutants (Fig. 1c).

The Young's modulus (E) and the absolute values of tissue viscosity ($|\eta|$) of wild-type and mutant strains are shown in Fig. 5(b). Results show that mutants have lower values of E when compared to wild-type nematodes. In other words, *dys-1*, *dys-1;hllh-1*, and *fer-1* mutants *C. elegans* are softer than their wild-type counterpart. The values of $|\eta|$ of *fer-1* mutants are similar to wild-type nematodes, within experimental error. However, the values of $|\eta|$ for *dys-1* mutants are lower than wild-type *C. elegans*. Since muscle fibers are known to exhibit visible damage for *dys-1;hllh-1* mutants [21], we hypothesize that the deterioration of muscle fibers may be responsible for the lower values of E and $|\eta|$ found for *dys-1* and *dys-1;hllh-1* mutants.

V. CONCLUSION

In summary, we characterize the swimming behavior of *C. elegans* at low Re . Results show a distinct periodic swimming behavior with a traveling wave that decays from the nematode's head to tail. By coupling experiments with a linearized model based on force and torque balance, we are able to estimate, *non-invasively*, the nematode's tissue material properties such as Young's modulus (E) and viscosity (η) as well as bending modulus (K_b). Results show that *C. elegans* behaves effectively as a viscoelastic material with $E \approx 3.77$ kPa, $|\eta| \approx 860.2$ Pa·s, and $K_b \approx 4.19 \times 10^{-16}$ Nm². In particular, the estimated values of E are much closer to biological tissues than previously reported values obtained using piezoresistive cantilevers [19]. We demonstrate that the methods presented here may be used, for example, to quantify motility phenotypes and tissue properties associated with muscular dystrophy mutations in *C. elegans*. Overall, by combining kinematic data with a linearized model, we are able to provide a robust and highly quantitative phenotyping tool for analysis of *C. elegans* motility, kinematics, and tissue mechanical properties. Given the rapid non-invasive optical nature of this method, it may provide an ideal platform for genetic and small molecule screening applications aimed at correcting phenotypes of mutant nematodes. Our method also sheds new light on our understanding of muscle function, physiology, and animal locomotion in general.

APPENDIX:

In this appendix, we detail the model for the motion of the nematode *C. elegans*. The nematode is modeled as a slender filament at low Reynolds numbers [26]. In our experiments, the uncertainty in the measured body lengths is less than 3% and we assume inextensibility. The nematode's motion is described in terms of its center-line $\vec{y}(s, t)$, where s is the arc-length along the filament and t is time [27]. We assume that the nematode moves in the xy -plane. The swimming *C. elegans* experiences no net total force or torque (moments) such that, in the limit of low Re , the equations of motion are

$$\frac{\partial \vec{F}}{\partial s} = C_t \vec{u}_t + C_n \vec{u}_n, \quad (\text{A.1})$$

$$\frac{\partial M}{\partial s} \vec{e}_z = -\hat{t} \times \vec{F}, \quad (\text{A.2})$$

where $\hat{t}(s, t) = \partial \vec{y} / \partial s$ is the tangent vector to the center-line, $\vec{F}(s, t)$ is the internal force, and $M(s, t) \vec{e}_z = \vec{M}(s, t)$ is the internal moment consisting of a passive and active part [13, 14]. Tangential and normal velocities are respectively given by $\vec{u}_t = (\partial \vec{y} / \partial t \cdot \hat{t}) \hat{t}$ and $\vec{u}_n = (\mathbf{I} - \hat{t} \otimes \hat{t}) \partial \vec{y} / \partial t$. The drag coefficients, C_t and C_n , are obtained from slender body theory [26]. Due to the finite confinement of nematodes between the parallel walls, corrections for wall effects on the resistive coefficients are estimated for slender cylinders [7]. The local body position \vec{y} , the velocity at any body position $\partial \vec{y} / \partial t$, and the tangent vector \hat{t} are all experimentally measured.

The constitutive relation for the moment $M(s, t)$ in our inextensible filament is assumed to be given by

$$M = M_p + M_a, \quad (\text{A.3})$$

where $M_p(s, t)$ is a passive moment and $M_a(s, t)$ is an active moment generated by the muscles of the nematode. The passive moment is given by a viscoelastic Voigt model [15]

$$M_p = EI\kappa + \eta_p I \frac{\partial \kappa}{\partial t}, \quad (\text{A.4})$$

where $\kappa(s, t)$ is the curvature along the nematode. Here, we assume two homogeneous *effective* material properties, namely (i) a constant Young's modulus E and (ii) a constant

tissue viscosity η_p . The active moment generated by the muscle is assumed to be given by:

$$M_a = -(EI\kappa_a + \eta_a I \frac{\partial \kappa}{\partial t}), \quad (\text{A.5})$$

where $\kappa_a = Q_0 \cos \omega t + Q_1 s \cos(\omega t - B)$ is a preferred curvature and η_a is a positive constant [30]. Q_0 , Q_1 and B must be obtained by fitting to experiments. $Q_1^2 L^2 + 2Q_0 Q_1 L \cos(B) < 0$ means that the curvature amplitudes at the head are larger than those at the tail and we should expect traveling waves going from head to tail causing the nematode to swim forward; similarly, $Q_1^2 L^2 + 2Q_0 Q_1 L \cos(B) > 0$ should give traveling waves going from tail to head so that the nematodes swim backward [12]. The total moment $M(s, t)$ can be written as

$$M = M_p + M_a = EI(\kappa - \kappa_a) + (\eta_p - \eta_a) I \frac{\partial \kappa}{\partial t} = EI(\kappa - \kappa_a) + \eta I \frac{\partial \kappa}{\partial t}. \quad (\text{A.6})$$

Note that if $\eta = \eta_p - \eta_a > 0$ then there is net dissipation of energy in the tissue; if $\eta = \eta_p - \eta_a < 0$ then there is net generation of energy in the tissue. For live nematodes that actively swim in the fluid we expect $\eta = \eta_p - \eta_a < 0$ since the net energy produced in the (muscle) tissue is needed to overcome the drag from the surrounding fluid. In other words, the driving force for the traveling waves seen in the nematode has its origins in the contractions of the muscle.

We model the nematode as a hollow cylindrical shell with outer radius r_o and inner radius r_i [19] such that the principal moment of inertia (second moment of the area of cross-section) I along the entire length of the nematode is given by $I = \frac{\pi}{4} [(r_m + \frac{t}{2})^4 - (r_m - \frac{t}{2})^4]$ where r_m is the mean radius and t is the cuticle thickness.

Consistent with experimental observations, we assume that the nematode moves along the x -axis and that the deflections of the centerline of the nematode from the x -axis are small. This allows us to take $s = x$ and write $\kappa(x, t) = \partial\phi/\partial x = \partial^2 y/\partial x^2$ where $y(x, t)$ is the deflection of the centerline of the nematode and $\phi(x, t)$ is the angle made by the tangent \hat{t} to the x -axis. The equations of motion can then be written as

$$\frac{\partial F_x}{\partial x} = C_t V_x, \quad \frac{\partial F_y}{\partial x} = C_n \frac{\partial y}{\partial t}, \quad (\text{A.7})$$

$$\frac{\partial M}{\partial x} + F_y = 0, \quad (\text{A.8})$$

where $\vec{F} = F_x \vec{e}_x + F_y \vec{e}_y$. V_x is the velocity of the nematode along the x -axis and corresponds to the average forward speed U . Combining a linearized formulation of Eqs. (A.1) and (A.2) along with the viscoelastic model of Eq. (A.6) offers a direct route towards (i) a closed-form analytical solution for the curvature $\kappa(x, t)$ and (ii) an estimate of tissue properties (E and η). Note that due to the assumption of small deflections [26], the x -component of the force balance becomes decoupled from the rest of the equations. As a result, we will not be able to predict V_x even if $y(x, t)$ is determined. But, we can solve equations (A.6), (A.7), and (A.8) for appropriate boundary conditions on F_y and M to see if we get solutions that look like traveling waves whose amplitude is not a constant, but in fact, is decreasing from the head to the tail of the nematode (Fig. 2a). To do so, we observe that the nematode's body oscillates at a single frequency irrespective of position x along its centerline (Fig. 2b). We therefore assume $y(x, t)$ and $M(x, t)$ to have a form that involves a single frequency ω , so that $y(x, t) = f(x) \cos \omega t + g(x) \sin \omega t$, and

$$M(x, t) = K_b(\omega) \frac{\partial^2 f}{\partial x^2} \cos(\omega t + \psi(\omega)) + K_b(\omega) \frac{\partial^2 g}{\partial x^2} \sin(\omega t + \psi(\omega)), \quad (\text{A.9})$$

where $f(x)$ and $g(x)$ are as yet unknown functions, $\psi(\omega)$ is frequency dependent phase angle, and $K_b(\omega)$ is a frequency dependent bending modulus of the homogeneous viscoelastic material making up the nematode. In particular,

$$\tan \psi = \frac{\eta \omega}{E}, \quad K_b = I \sqrt{E^2 + \omega^2 \eta^2}, \quad (\text{A.10})$$

where the parameter K_b , E , and η correspond to the *effective* tissue properties of the nematode. To be consistent with the observation of a single frequency ω and non-zero amplitudes of the curvature κ at the head and tail, we apply boundary conditions

$$F_y(0, t) = 0, \quad M(0, t) = 0, \quad F_y(L, t) = 0, \quad M(L, t) = 0, \quad (\text{A.11})$$

We can make further progress by differentiating the balance of moments once with respect

to x and substituting the y -component of the balance of forces into it to get

$$\frac{\partial^2 M}{\partial x^2} + C_n \frac{\partial y}{\partial t} = 0 \quad (\text{A.12})$$

Substituting for $M(x, t)$ from eqn.(A.9) yields a biharmonic equation for the functions f and g which can be solved to give the following solution for $y(x, t)$

$$\begin{aligned} y(x, t) = & A_{01} \exp(\beta x \cos(\frac{\pi}{8} + \frac{\psi}{4})) \cos(\beta x \sin(\frac{\pi}{8} + \frac{\psi}{4}) - \omega t - \phi_{01}) \\ & + A_{23} \exp(-\beta x \cos(\frac{\pi}{8} + \frac{\psi}{4})) \cos(-\beta x \sin(\frac{\pi}{8} + \frac{\psi}{4}) - \omega t - \phi_{23}) \\ & + A_{45} \exp(\beta x \cos(\frac{\psi}{4} - \frac{3\pi}{8})) \cos(\beta x \sin(\frac{\psi}{4} - \frac{3\pi}{8}) - \omega t - \phi_{45}) \\ & + A_{67} \exp(-\beta x \cos(\frac{\psi}{4} - \frac{3\pi}{8})) \cos(-\beta x \sin(\frac{\psi}{4} - \frac{3\pi}{8}) - \omega t - \phi_{67}), \end{aligned} \quad (\text{A.13})$$

where $\beta = (C_n \omega / K_b)^{1/4}$, and A_{01} , A_{23} , A_{45} , A_{67} , ϕ_{01} , ϕ_{23} , ϕ_{45} and ϕ_{67} are eight constants to be determined from the eight equations resulting from the $\sin \omega t$ and $\cos \omega t$ coefficients of the boundary conditions. Note that these are four waves of the type $y(x, t) = b(x) \cos(2\pi(x + V_w t)/\lambda)$ which is the form originally *assumed* by Gray and Hancock based on experiment [26]. In contrast, we have obtained such waves as a solution to the equations of motion. We plot the amplitude and phase of these waves for a particular choice of parameters in Fig. 6. But, the exact solution above is cumbersome to use. We need simple expressions that can be easily fit to some observable in the experiment to obtain β and ψ , or equivalently, E and η . One such parameter is the amplitude of the traveling waves as a function of position x along the nematode. We develop a strategy to obtain this amplitude in the following.

Based on the exact solutions to the equations we approximate the displacement $y(x, t)$ as follows:

$$\begin{aligned} y(x, t) \approx & A_1 \exp(-\beta x \cos(\frac{\psi}{4} - \frac{3\pi}{8})) \cos(-\beta x \sin(\frac{\psi}{4} - \frac{3\pi}{8}) - \omega t) \\ & + A_2 \exp(\beta x \cos(\frac{\psi}{4} + \frac{\pi}{8})) \cos(\beta x \sin(\frac{\psi}{4} + \frac{\pi}{8}) - \omega t + \phi_2) \\ & + A_2 \exp(\beta x \cos(\frac{\psi}{4} - \frac{3\pi}{8})) \cos(\beta x \sin(\frac{\psi}{4} - \frac{3\pi}{8}) - \omega t + \phi_2 - \frac{3\pi}{4}) \\ & + A_1 \exp(-\beta x \cos(\frac{\psi}{4} + \frac{\pi}{8})) \cos(-\beta x \sin(\frac{\psi}{4} + \frac{\pi}{8}) - \omega t - \frac{\pi}{2}). \end{aligned} \quad (\text{A.14})$$

For experimental values of $\kappa_a(L, t)/\kappa_a(0, t) = 0.33$ we find $A_1/A_2 \approx 443$ so that A_2 is much smaller in comparison to A_1 . Note that

$$\begin{aligned} y(0, t) &= A_1 \cos \omega t + A_2 \cos(\omega t - \phi_2) + A_2 \cos(\omega t - \phi_2 + \frac{3\pi}{4}) + A_1 \cos(\omega t + \frac{\pi}{2}) \\ &= \sqrt{2}A_1 \cos(\omega t + \frac{\pi}{4}) + 2A_2 \cos(\frac{3\pi}{8}) \cos(\omega t - \phi_2 + \frac{3\pi}{8}). \end{aligned} \quad (\text{A.15})$$

The curvature can be calculated as under:

$$\begin{aligned} \kappa(x, t) = \frac{\partial^2 y}{\partial x^2} &\approx \beta^2 A_1 \exp(-\beta x \cos(\frac{\psi}{4} - \frac{3\pi}{8})) \cos(-\beta x \sin(\frac{\psi}{4} - \frac{3\pi}{8}) - \omega t - \frac{3\pi}{4} + \frac{\psi}{2}) \\ &+ \beta^2 A_2 \exp(\beta x \cos(\frac{\psi}{4} + \frac{\pi}{8})) \cos(\beta x \sin(\frac{\psi}{4} + \frac{\pi}{8}) - \omega t + \phi_2 + \frac{\pi}{4} + \frac{\psi}{2}) \\ &+ \beta^2 A_2 \exp(\beta x \cos(\frac{\psi}{4} - \frac{3\pi}{8})) \cos(\beta x \sin(\frac{\psi}{4} - \frac{3\pi}{8}) - \omega t + \phi_2 - \frac{3\pi}{4} - \frac{3\pi}{4} + \frac{\psi}{2}) \\ &+ \beta^2 A_1 \exp(-\beta x \cos(\frac{\psi}{4} + \frac{\pi}{8})) \cos(-\beta x \sin(\frac{\psi}{4} + \frac{\pi}{8}) - \omega t - \frac{\pi}{2} + \frac{\pi}{4} + \frac{\psi}{2}) \end{aligned} \quad (\text{A.16})$$

Note again that

$$\begin{aligned} \kappa(0, t) &= \beta^2 A_1 \cos(\omega t + \frac{3\pi}{4} - \frac{\psi}{2}) + \beta^2 A_2 \cos(\omega t - \phi_2 - \frac{\pi}{4} - \frac{\psi}{2}) \\ &+ \beta^2 A_2 \cos(\omega t - \phi_2 + \frac{3\pi}{4} + \frac{3\pi}{4} - \frac{\psi}{2}) + \beta^2 A_1 \cos(\omega t + \frac{\pi}{4} - \frac{\psi}{2}) \\ &= \sqrt{2}\beta^2 A_1 \cos(\omega t + \frac{\pi}{2} - \frac{\psi}{2}) + 2A_2 \cos(\frac{7\pi}{8}) \cos(\omega t - \phi_2 - \frac{\psi}{2} + \frac{5\pi}{8}). \end{aligned} \quad (\text{A.17})$$

It is possible to determine β and ψ from (A.15) and (A.17) alone. If we recognize that $A_1 \gg A_2$ at the head then we see that the ratio of the amplitude of the curvature to the amplitude of the displacement at the head is simply β^2 and the phase difference between them is $(\frac{\pi}{4} - \frac{\psi}{2})$ (the phase difference between $\frac{\partial y}{\partial x}$ and $\frac{\partial^2 y}{\partial x^2}$ at the head is $\frac{19\pi}{16} - \frac{\psi}{4}$). We find by comparing with the exact solution that an estimate of β using this method is accurate to within 1% and that of ψ is accurate to within 2 or 3 degrees.

The curvature is an oscillatory function and we can determine its amplitude $\mathcal{A}(x)$ simply by isolating the coefficients of $\cos \omega t$ and $\sin \omega t$ and then squaring and adding them. We get

the following expression as a result of this exercise:

$$\begin{aligned}
\mathcal{A}^2(x) = & \beta^4 A_1^2 \exp(-2\beta x \cos(\frac{\psi}{4} - \frac{3\pi}{8})) + \beta^4 A_2^2 \exp(2\beta x \cos(\frac{\psi}{4} + \frac{\pi}{8})) \\
& + \beta^4 A_2^2 \exp(2\beta x \cos(\frac{\psi}{4} - \frac{3\pi}{8})) + \beta^4 A_1^2 \exp(-2\beta x \cos(\frac{\psi}{4} + \frac{\pi}{8})) \\
& - 2\beta^4 A_1 A_2 \exp(-\sqrt{2}\beta x \sin(\frac{\psi}{4} - \frac{\pi}{8})) \cos(-\sqrt{2}\beta x \sin(\frac{\psi}{4} - \frac{\pi}{8}) - \phi_2) \\
& + 2\beta^4 A_1 A_2 \cos(-2\beta x \sin(\frac{\psi}{4} - \frac{3\pi}{8}) - \phi_2 + \frac{3\pi}{4}) \\
& - 2\beta^4 A_2^2 \exp(\sqrt{2}\beta x \cos(\frac{\psi}{4} - \frac{\pi}{8})) \cos(\sqrt{2}\beta x \cos(\frac{\psi}{4} - \frac{\pi}{8}) + \frac{3\pi}{4}) \\
& + 2\beta^4 A_1 A_2 \cos(2\beta x \sin(\frac{\psi}{4} + \frac{\pi}{8}) + \frac{\pi}{2} + \phi_2) \\
& + 2\beta^4 A_1 A_2 \exp(\sqrt{2}\beta x \sin(\frac{\psi}{4} - \frac{\pi}{8})) \cos(\sqrt{2}\beta x \sin(\frac{\psi}{4} - \frac{\pi}{8}) + \phi_2 - \frac{5\pi}{4}) \\
& + 2\beta^4 A_1^2 \exp(-\sqrt{2}\beta x \cos(\frac{\psi}{4} - \frac{\pi}{8})) \cos(\sqrt{2}\beta x \cos(\frac{\psi}{4} - \frac{\pi}{8}) - \frac{\pi}{2}). \tag{A.18}
\end{aligned}$$

We can fit the experimental data of curvature as a function of x using the expression above. There are five fit parameters – A_1 , A_2 , β , ψ and ϕ_2 . The value of ϕ_2 mostly affects the curvature profile near the tail. Values of $\phi_2 \approx \pi/3$ seem to give good fits for the curvature data of the nematodes. A_1 can be determined from the amplitude of the displacement at the head. This leaves three fit parameters – A_2 , β and ψ . We can use this fit to check if the parameters β and ψ obtained from analyzing the motion of the head alone are reasonable or not.

Methods Summary

***C. elegans* strain.** All strains were maintained using standard culture methods and fed with the *E. coli* strain OP50. The following muscular dystrophic (MD) strains were used: *fer-1(hc24ts)*, *dys-1(cx18)I* and *hll-1(cc561)II;dys-1(cx18)I* double mutant. Note that *hll-1* is a myoD mutant that qualitatively reveals the motility defects of *dys-1* mutants. Analysis were performed on hypochlorite synchronized young adult animals. *fer-1* mutants were hatched at the restrictive temperature of 25°C and grown until they reach the young adult stage. *dys-1(cx18) I; hll-1(cc561) II* mutants were grown at the permissive temperature of 16°C. Wild-type nematodes grown at the appropriate temperature were used as controls. Strains were obtained from the *Caenorhabditis elegans* Genetic Stock Center.

Acknowledgements

The authors would like to thank J. Yasha Kresh, Y. Goldman, P. Janmey, and T. Shinbrot for helpful discussions. We also thank R. Sznitman for help with vision algorithms and P. Rockett for manufacturing acrylic channels. Some nematode strains used in this work were provided by the Caenorhabditis Genetics Center, which is funded by the NIH National Center for Research Resources (NCR).

REFERENCES

- [1] Bargmann, C. I., *Science* **282**, 2028 (1998).
- [2] Mendel, J. E., H. Korswagen, K. S. Liu, Y. M. Hadju-Cronin, M. I. Simon, R. H. Plasterk, and P. W. Sternberg, *Science* **267**, 1652 (1995).
- [3] Nelson, L. S., M. L. Rosoff, and C. Li, *Science* **281**, 1686 (1998).
- [4] White, J. G., E. Southgate, J. N. Thomson, and S. Brenner, *Phil. Trans. R. Soc. Lond. B Biol. Sci.* **275**, 327 (1976).
- [5] White, J. G., E. Southgate, J. N. Thomson, and S. Brenner, *Phil. Trans. R. Soc. Lond. B Biol. Sci.* **314**, 1 (1986).
- [6] Childress, S., *Mechanics of Swimming and Flying* (Cambridge University Press, 1981).
- [7] Brennen, C. and H. Winet, *Annu. Rev. Fluid Mech.* **9**, 339 (1977).
- [8] Taylor, G. I., *Proc. R. Soc. A* **209**, 447 (1951).
- [9] Purcell, E. M., *Am. J. Phys.* **45**, 3 (1977).
- [10] Gray, J. and H. W. Lissmann, *J. Exp. Biol.* **41**, 135 (1964).
- [11] Korta, J., D. A. Clark, C. V. Gabel, L. Mahadevan, and A. D. T. Samuel, *J. Exp. Biol.* **210**, 2383 (2007).
- [12] Pierce-Shimomura, J. T., B. L. Chen, J. J. Mun, R. Ho, R. Sarkis, and S. L. McIntire, *Proc. Natl. Acad. Sci. USA* **105**, 2098220987 (2008).
- [13] Karbowski, J., C. J. Cronin, A. Seah, J. E. Mendel, D. Cleary, and P. W. Sternberg, *J. Theor. Biol.* **242**, 652 (2006).
- [14] Guo, Z. V. and L. Mahadevan, *Proc. Natl. Acad. Sci. USA* **105**, 3179 (2008).

- [15] Fung, Y. C., *A First Course in Continuum Mechanics* (Prentice Hall, 1993).
- [16] Cronin, C. J., J. E. Mendel, S. Mukhtar, Y.-M. Kim, R. C. Stirb, J. Bruck, and P. W. Sternberg, *BMC Genetics* **6**, 5 (2005).
- [17] Feng, Z., C. J. Cronin, J. H. Wittig, and P. W. S. and W. R. Schafer, *BMC Bioinformatics* **5**, 115 (2004).
- [18] Ramot, D., B. E. Johnson, T. L. Berry, L. Carnell, and M. B. Goodman, *PLOS One* **3**, e2208 (2008).
- [19] Park, S.-J., M. B. Goodman, and B. L. Pruitt, *Proc. Natl. Acad. Sci. USA* **104**, 17376 (2007).
- [20] Brenner, S., *Genetics* **77**, 71 (1974).
- [21] Gieseler, K., K. Grisoni, and L. Ségalat, *Current Biology* **10**, 1092 (2000).
- [22] Tytell, E., and G. V. Lauder, *J. Exp. Biol.* **207**, 1825 (2004).
- [23] Kern, S., and P. Koumoutsakos, *J. Exp. Biol.* **209**, 4841 (2006).
- [24] Qian, B., T. R. Powers, and K. S. Breuer, *Phys. Rev. Lett.* **100**, 078101 (2008).
- [25] Yu, T. S., E. Lauga, and A. E. Hosoi, *Phys. Fluids* **18**, 091701 (2006).
- [26] Gray, J. and G. Hancock, *J. Exp. Biol.* **32**, 802 (1955).
- [27] Antman, S. S., *Nonlinear problems in elasticity* (Springer-Verlag, New York, 1995).
- [28] Katz, D. F., J. R. Blake, and S. L. Paveri-Fontana, *J. Fluid Mech.* **72**, 529 (1975).
- [29] Linden, R. J., *Recent Advances in Physiology* (Churchill Livingstone, Edinburgh and London, 1974).
- [30] Thomas, N. and R. Thornhill, *J. Phys. D: Appl. Phys.* **31**, 253 (1998).
- [31] Zelenskaya, A., J. B. de Monvel, D. Pesen, M. Radmacher, J. H. Hoh, and M. Ulfendahl, *Biophys. J.* **88**, 2982 (2005).
- [32] Cox, G. N., M. Kusch, and R. S. Edgar, *J. Cell Biol.* **90**, 7 (1981).
- [33] Engler, A. J., S. Sen, H. L. Sweeney, and D. E. Discher, *Cell* **126**, 677 (2006).
- [34] Feit, H., M. Kawai, and M. I. Schulman, *Muscle Nerve* **8**, 503 (1985).
- [35] Kawai, M. and P. W. Brandt, *J. Muscle Res. Cell Motil.* **1**, 279 (1980).
- [36] Tawada, A. and M. Kawai, *Biophys. J.* **57**, 643 (1990).
- [37] Yamada, S., D. Wirtz, and S. C. Kuo, *Biophys. J.* **78**, 1736 (2000).
- [38] Thoumine, O. and A. Ott, *J. Cell Sci.* **110**, 2109 (1997).
- [39] Purohit, P. K., X. Shen, and P. E. Arratia, *Exp. Mech.* **under review**, (2009).
- [40] Bessou, C., J.-B. Giuglia, C. J. Franks, L. Holden-Dye, and L. Segalat, *Neurogenetics* **2**, 61

(1998).

FIGURE LEGENDS

Figure 1:

Motility of wild-type *C. elegans* and *dys-1;hllh-1* muscular dystrophic (MD) mutant swimming at low Reynolds number. (a) and (c): Visualization of *C. elegans* motion illustrating instantaneous body centerline or skeleton. Also shown are the nematode's (i) centroid and (ii) tail-tip trajectories over multiple body bending cycles. (b) and (d): Color-coded temporal evolution of *C. elegans* skeletons over one beating cycle. Results reveal a well-defined envelope of elongated body shapes with a wavelength corresponding approximately to the nematode's body length.

Figure 2:

Spatio-temporal kinematics of *C. elegans* forward swimming gait. (a) Representative contour plot of the *experimentally measured* curvature (κ) along the nematode's body centerline for approximately 6 bending cycles. Red and blue colors represent positive and negative κ values, respectively. The y -axis corresponds to the dimensionless position s/L along the *C. elegans*' body length where $s = 0$ is the head and $s = L$ is the tail. (b) Nematode's body bending frequency obtained from Fast Fourier Transform of κ at different s/L . The peak is seen at a single frequency (~ 2.4 Hz) irrespective of the location s/L . (c) Contour plot of curvature κ values *obtained from the model*. The model captures the longitudinal bending wave with decaying magnitude, which travels from head to tail. (d) Comparison between experimental and theoretical curves of κ at $s/L = 0.1$ and $s/L = 0.4$; dashed lines correspond to model predictions (root mean square error is $\sim 10\%$ of peak-to-peak amplitude).

Figure 3:

Schematic of the analytical model for the total internal moment M . Muscle tissue is described by a visco-elastic model containing both passive and active elements. The passive moment (M_p) is described by the Voigt model consisting of a passive elastic element (spring) of stiffness E (i.e. Young's modulus) and a passive viscous element (dashpot) of tissue viscosity η_p . The active moment (M_a) is described by an active muscular element of

viscosity η_a and illustrates a negative slope on a force-velocity plot. Since there is a net generation of energy in the muscle to overcome drag from the surrounding fluid, we expect $\eta = \eta_p - \eta_a < 0$.

Figure 4:

Typical *C. elegans* viscoelastic material properties. Typical experimental profile of the curvature amplitude $|\kappa|$ decay as a function of body position s/L . Color-coded theoretical profiles of the curvature amplitude decay $|\kappa|$ at fixed value of the bending modulus K_b . Curves vary from $\psi = 0^\circ$ (red) to $\psi = -90^\circ$ (blue), which corresponds to $\eta = 0$ and $E = 0$, respectively.

Figure 5:

Kinematics and material properties of wild type and three muscle mutants of *C. elegans*. (a) Measured kinematic data and (b) estimated Young's modulus E and absolute values of tissue viscosity $|\eta|$ for wild-type, *fer-1(hc24)*, *dys-1(cx18)*, and *dys-1(cx18); hllh-1(cc561)* adult nematodes ($n = 7-25$ nematodes for each genotype. * - $p < 0.01$).

Figure 6:

Amplitude and phase of traveling waves obtained from enforcing force and moment boundary conditions at $x = 0, L$. (a) Amplitudes of the A_{23} and A_{67} waves decrease from $x = 0$ to $x = L$ while the amplitudes of the A_{01} and A_{45} waves increase from $x = 0$ to $x = L$. The amplitudes of the former two waves are larger than the latter two. (b) Phases ϕ_{01} , ϕ_{23} , ϕ_{45} and ϕ_{67} are all constant from $x = 0$ to $x = L$. The phase difference between the A_{67} wave and A_{23} wave is approximately 90° . The parameters used to obtain these plots are: $\omega = 4\pi$ radians/sec, $L = 1.0\text{mm}$, $K_b = 5.0 \times 10^{-16}\text{Nm}^2$, $C_n = 0.06\text{Ns/m}^2$, $\psi = -45^\circ$, $EIQ_0 = 4.35 \times 10^{-12}\text{Nm}$, $Q_1L = -1.054Q_0$ and $B = 198.4^\circ$.

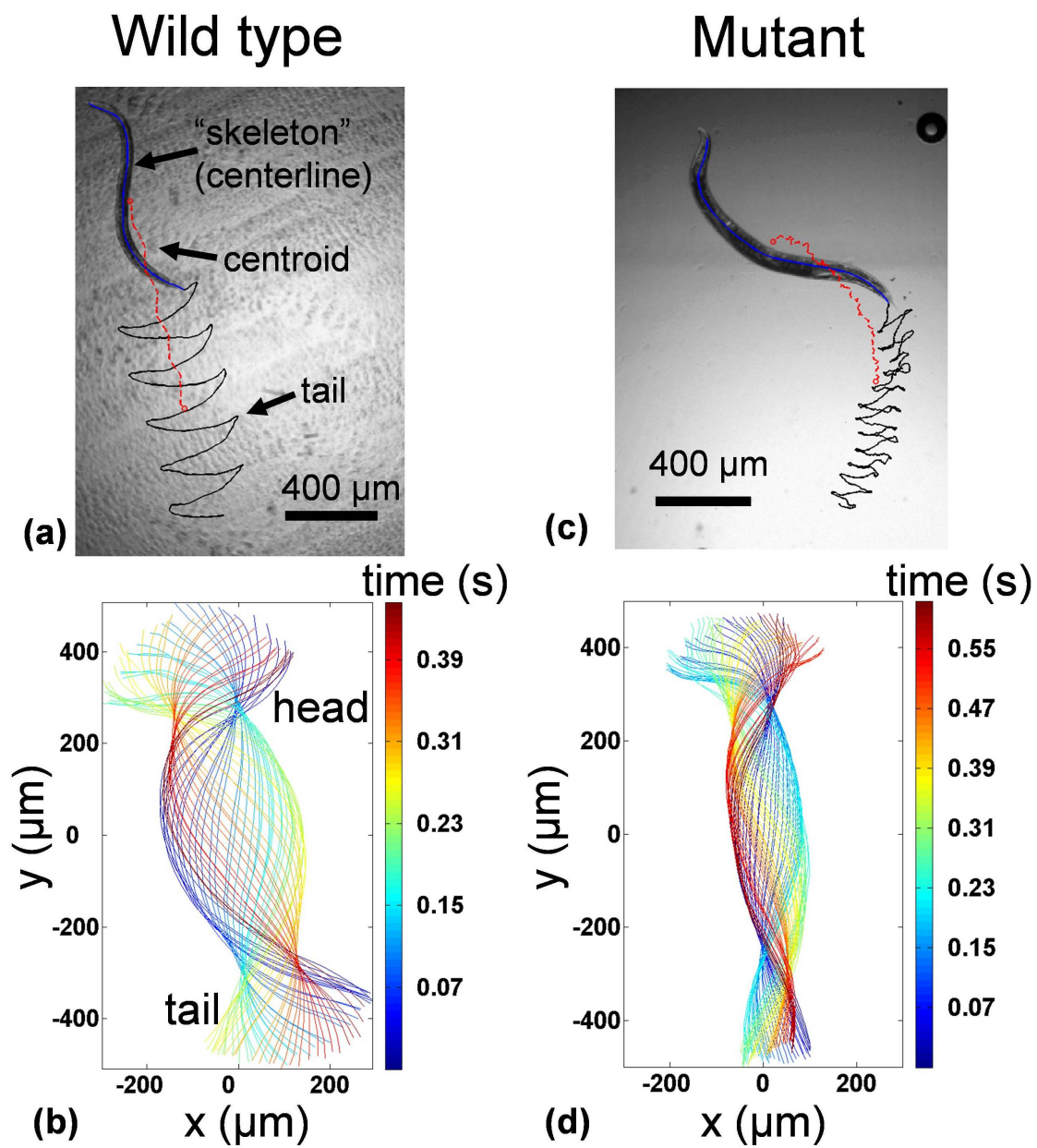


FIG. 1:

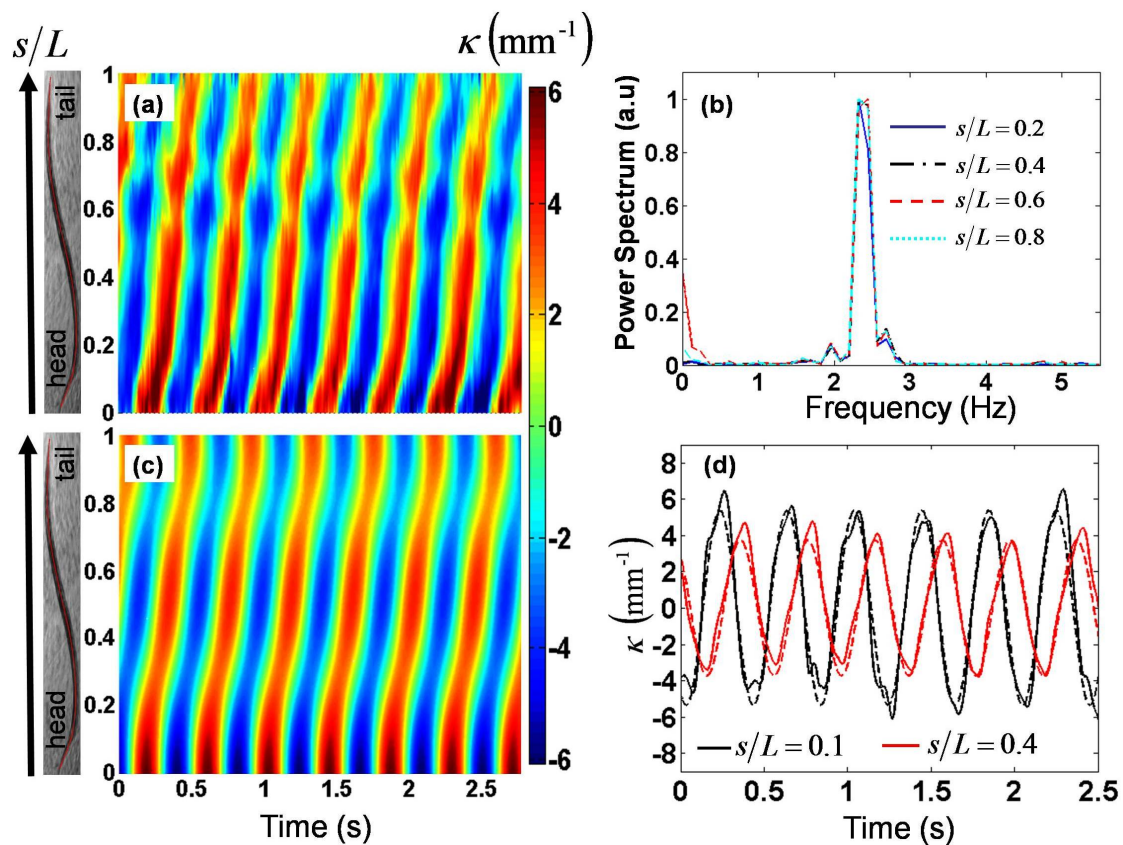


FIG. 2:

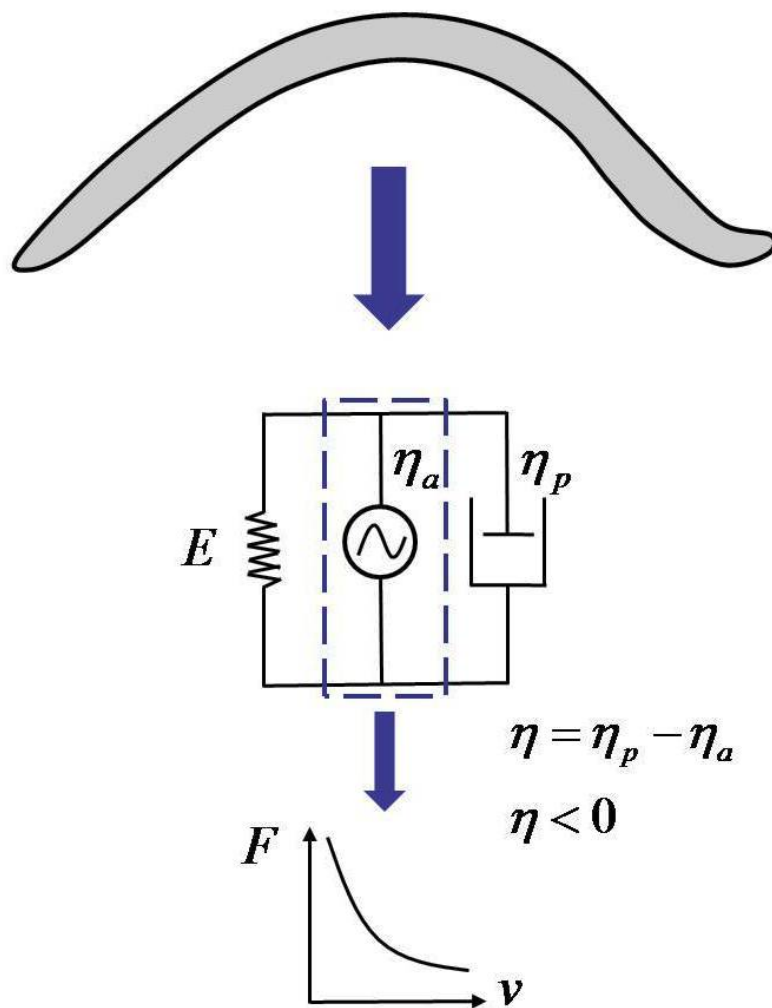


FIG. 3:

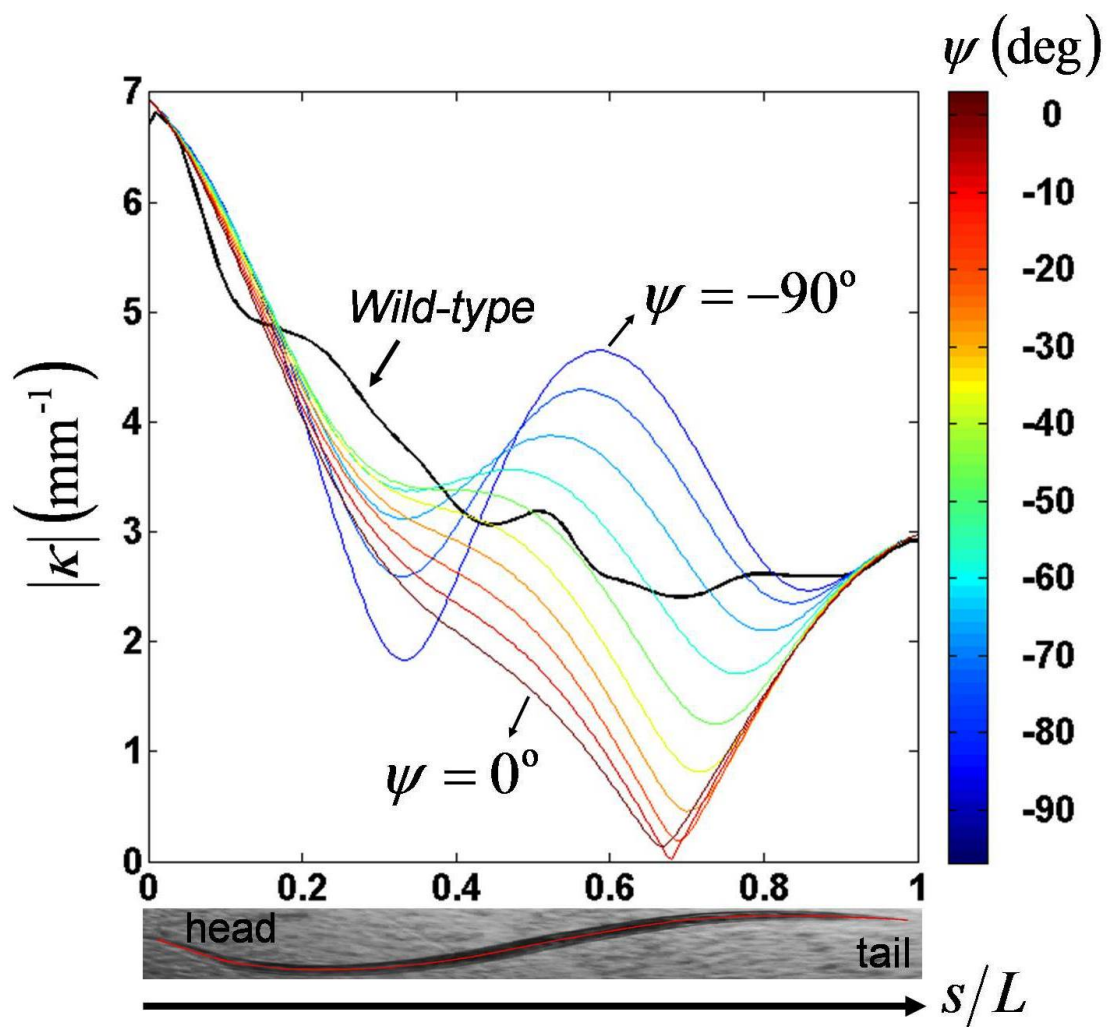


FIG. 4:

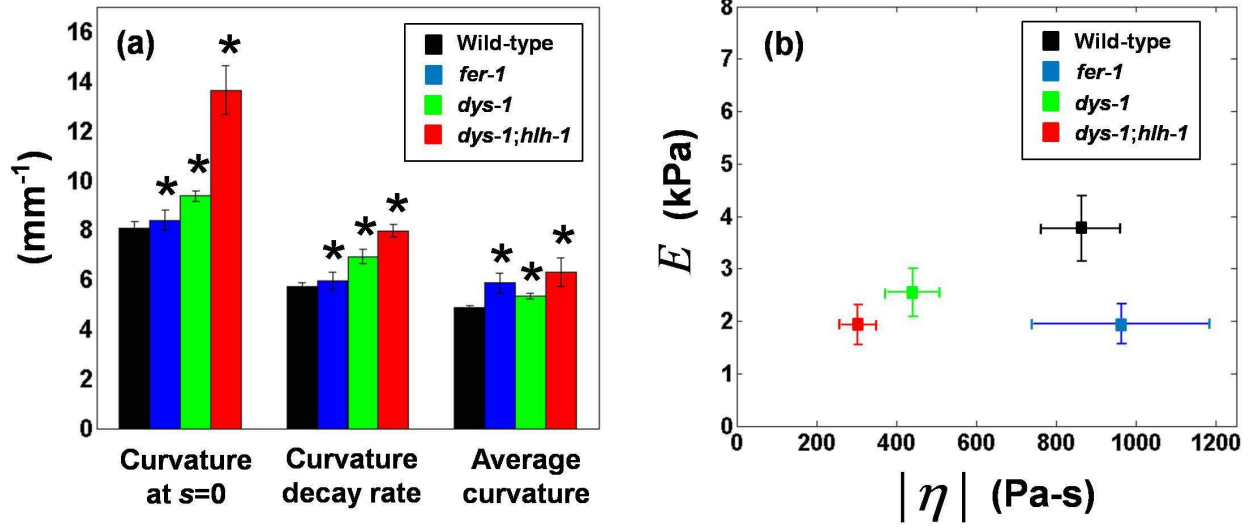


FIG. 5:

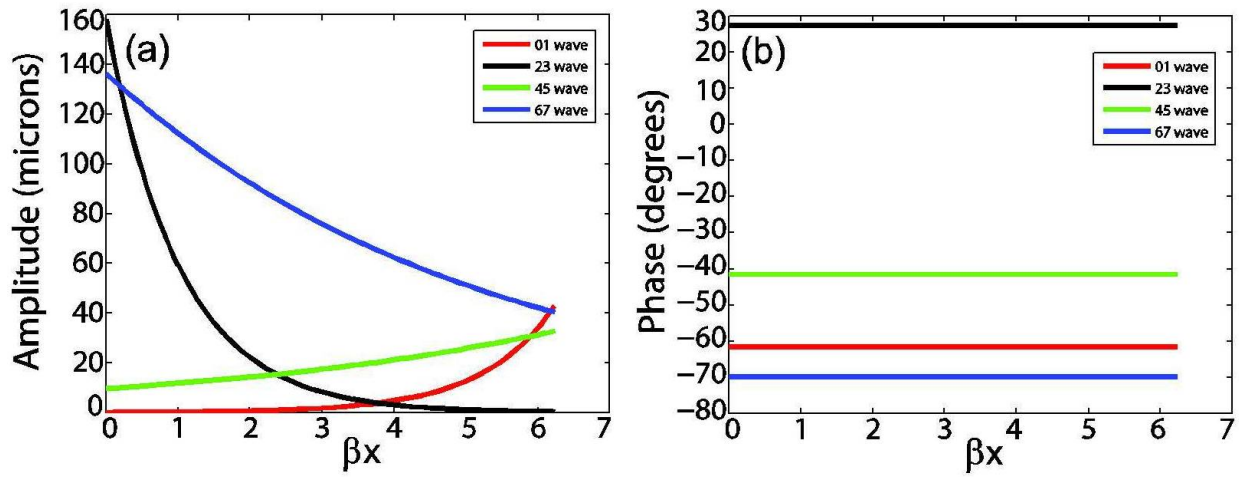


FIG. 6: