

## BRIEF NOTE

A NEW GENUS, *PLATYPONA*, AND NEW SPECIES OF GYPONINAE (HOMOPTERA CICADELLIDAE) RELATED TO *GYPONA* AND *HECALAPONA*<sup>1</sup>

DWIGHT M. DeLONG, Department of Entomology, Ohio State University, Columbus, OH 43210

OHIO J. SCI. 82(3): 140, 1982

A green gyponine leafhopper, *P. sinverda* n. sp. from Peru, which is intermediate in form between *Gypona* and *Hecalapona* and which apparently should not be placed in either genus, is described and placed in a new genus, *Platypona*.

*Platypona* new genus

Head narrower than pronotum; crown thin, flat, foliaceous and produced as in *Hecalapona*, but more triangular, with rounded apex, like *Gypona* in being shorter than basal width between eyes. The male genital styles are elongate, thread-like and the aedeagus bears slender processes that arise at base of shaft, extend along and are contiguous with shaft, to its apex. The pygofer bears a long spine-like process which extends along inner margin, each side, from the median dorsal margin to near apex of pygofer. Type-species *Platypona sinverda* n. sp.

*Platypona sindveda* (Fig. 1.)

Length of male 8.2 mm, female unknown. Crown produced, flat, foliaceous,  $\frac{1}{4}$  wider at base between eyes than median length. Color dull green. Crown with a reddish brown elongate marginal spot, each side, half way between eye and apex. Scutellum with brown basal angles; median portion pale brown. Forewings green anterior to a diagonal brown line or narrow band extending from tip of clavus to  $\frac{2}{3}$  length of costa, apical portion of wing beyond brown coloration, whitish hyaline with red veins.

Male genitalia with plates  $4\frac{1}{2}$  times as long as median width, apex narrowed, bluntly pointed. Style elongate, slender, rod-like, apical portion tapered to a fila-

mentous tip and bearing a short, slender thorn-like spine on dorsal margin at  $\frac{4}{5}$  its length. Aedeagal shaft slender at base, in ventral view, broadened medially, slightly narrowed at apex that is broad and blunt, bearing a short curved hook each side, extending laterally. A pair of slender rod-like processes arise at base of shaft and extend proximal to it, on ventral margin, to apex, where each is bent basolaterally, forming slender crossed apices, one-fifth length of shaft. Pygofer with a broad process arising dorsally inside pygofer wall and extending ventrocaudally, narrowed at  $\frac{2}{3}$  its length, forming a slender curved apex.

Holotype male, Sinchona, Peru, November 1943, J. G. Sanders coll., in the DeLong Collection, Ohio State University.

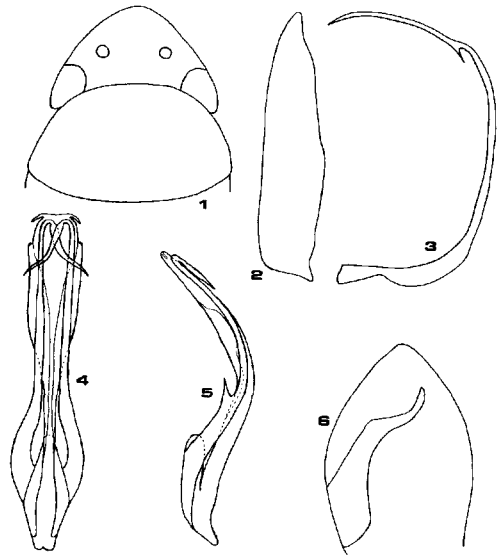


FIGURE 1. *Platypona sinverda* n.sp. 1. head and pronotum dorsally, 2. plate ventrally, 3. style laterally, 4. aedeagus ventrally, 5. aedeagus laterally, 6. pygofer laterally.

<sup>1</sup>Manuscript received 21 July 1980 (#80-40).