
DEVOLANA, NEW GENUS OF MEXICAN
DELTOCEPHALINAE, AND A NEW SPECIES
OF *DEVOLANA*^{1, 2}

(HOMOPTERA: CICADELLIDAE)

DWIGHT M. DELONG

Department of Zoology and Entomology, The Ohio State University, Columbus, Ohio

ABSTRACT

A new genus of Deltocephalinae, *Devolana*, and one new species, *D. hemicycla*, are described from specimens collected in Iguala, Mexico. Forms resemble species of both *Exitianus* and *Spinulana*, to which they are closely related, but differ in the morphology of their genital structures. Holotypes are preserved in Delong collection.

The genus herein described was collected at Iguala, Mexico, and is related to both *Exitianus* and *Spinulana*. It differs from these by the type of genital structures, as indicated in the description of the genus.

***Devolana* new genus**

Type of genus: *Devolana hemicycla* new species

Resembling in general appearance species of *Spinulana* and *Exitianus*. It differs from the former by the absence of the pygofer spine and from the latter by having a long slender tapered aedeagus which is bifid on apical half and which has styles with slender apices which curve inwardly. Crown short, broad, almost four times as broad between eyes as median length, almost parallel margined, rounded to front. Pronotum with lateral margins very short. Forewing long and narrow, appendix well developed, extending to middle of apex.

¹This work was supported in part by the National Science Foundation (Grant NSF GB-2932).

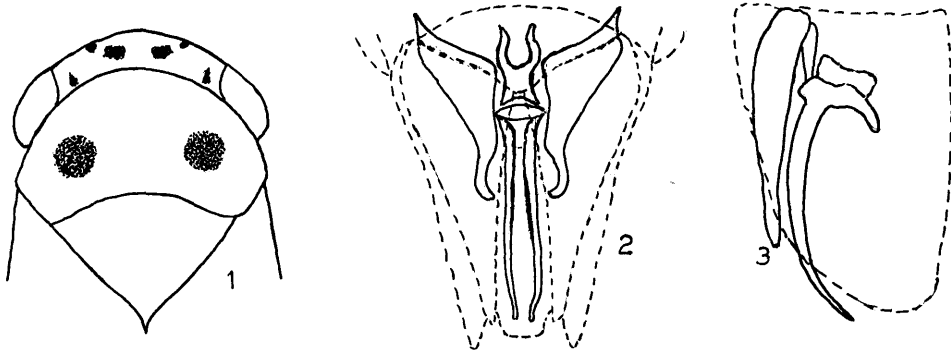
²Manuscript received September 30, 1966.

Devolana hemicycla n. sp.

Resembling *Spinulana spinosa* in general form, but with simple type of pygofer and with different male genital structures. Length of male 6.7 mm.

Crown short and broad, broadly rounded, almost four times as wide between eyes at base as median length; broadly rounded to front. Forewing well exceeding abdomen, venation simple, appendix well developed extending to about middle of wing apex.

Color.—Pale with dark markings. Crown with a small spot close to each eye at base and a pair of larger, rounded proximal spots at middle; a small diagonal dashed line extends from front and is directed toward the central spot on each side. Pronotum pale, tinted with orange



Devolana hemicycla n. sp. FIG. 1. Head, pronotum, and scutellum. FIG. 2. Male genital structures, ventral view. FIG. 3. Same, lateral view.

along anterior margin, and with a pair of large round black spots, one about the center of each side and closer to posterior than the anterior margin. Scutellum with a transverse dark line at middle, tinted yellowish anteriorly and white posteriorly. Forewings pale with dark conspicuous veins, except apical cross veins, which are not visible.

Genitalia.—Male plates long, triangular, apices pointed, longer than combined width at base. Styles elongate, the apical third forming a slender hook-like tip, the apex directed inwardly. Connective short. Aedeagus in lateral view appearing simple, rather long, curved gently dorsally and tapered to a narrow, blunt apex. In ventral view it appears divided into two parallel portions which are slightly separated. Pygofer simple.

Holotype male.—Iguala, Guerrero, Mexico, IX-11-39, D. M. DeLong, Paratypes, 2 males, same as holotype; 1 male, same locality, X-25-41, DeLong, Good, Caldwell, and Plummer; 1 male, Zincauro, Guerrero, Mexico, IX-2-30, M.F. 1789, J. Parra, Coll. Holotype and paratypes in the DeLong Collection.