

MINOR PLANT NOTES, No. 5.

W. A. KELLERMAN.

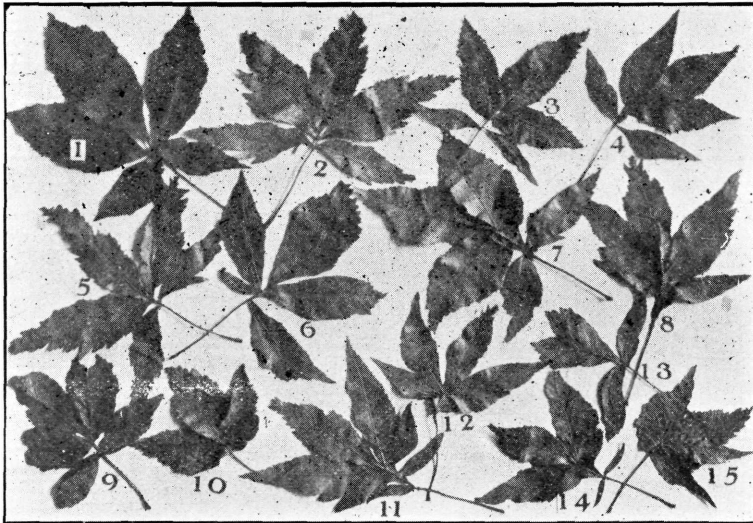
WHITE HEATH ASTER.—Some notes were given in a former number of the OHIO NATURALIST concerning the *Aster ericoides*, the White Heath Aster. Opportunity was afforded in 1903 to see the behavior of this species in Washington County, Ohio. Here, as was the case in Adams County, the plant, if unmolested, soon takes full possession of the pastures and roadsides, and all neglected arable ground. While it does prevent washing of the hillsides, it would not seem to be a profitable plant to grow or to let grow for this purpose; grasses rather should be cultivated. The thrifty farmer apparently has no annoyance from this weed, since it does not venture to grow on ground occupied with properly cultivated crops. It is believed that the former estimate and judgment relative to *Aster ericoides* does not need revision.

BEAT THAT?—At the end of the previous growing season there was found in a garden, a beet (not a dead beet) that had been evidently struggling heroically against adverse circumstances. Adjacent sweet pea vines, not properly supported, had fallen over and partially smothered a row of garden beets. One of these made an effort to reach up to the light but was caught again and dragged down. It evidently persisted in its efforts and the result is shown in the marginal figure reproduced from a photograph. The stem sent up many many small branches whose small leaves obtained the necessary sunshine. This struggle for existence also awakened the instinct of reproduction and accordingly an elongated inflorescence was formed. Numerous flowers and some fruits were produced. The total length of the stem was six feet.

ABNORMAL LEAVES OF *AESCULUS GLABRA*.—A very striking case of abnormal leaves was recently noticed near Columbus, in a grove of small trees of the Ohio Buckeye, *Aesculus glabra*. Earlier in the season they had quite denuded of leaves by insect depredation. A dense tuft of leaves terminated each of the twigs—in itself conspicuous—and nearly half of the new leaves were more or less aborted and abnormal. The



leaflets were seldom of the normal shape, the lamina generally extending downward to the petiole—a suggestion of a pinnate type—and the whole affair presenting a crumpled and distorted aspect. The accompanying sketches indicate some of the commoner outlines.



ABNORMAL LEAVES OF AESCULUS GLABRA.

LARGE OHIO TREES.—From time to time as opportunity offered, trees of unusual size have been measured with the results here tabulated—the measurements taken about three or four feet from the ground :

Name.	Locality.	Circumference.
Acer negundo, Box Elder.	Columbus	8 ft. 2 in.
Acer saccharinum, Silver Maple.	Symmes Creek, Lawrence County	8 ft. 6 in.
Aesculus glabra, Ohio Buckeye.	Marblehead, Ottawa Co.	9 ft. 2 in.
Aesculus octandra, Sweet Buckeye.	Manchester, Adams Co.	9 ft. 7 in.
Asimina triloba, Papaw.	Symmes Creek Valley, Lawrence County	3 ft. 8 in.
Betula nigra, River Birch.	Hocking Co.	7 ft. 1 in.
Castanea dentata, Chestnut.	Brush Tp., Scioto Co.	13 ft. 3 in.
Catalpa catalpa, Catalpa.	Symmes Creek Valley, Lawrence County	9 ft. 2 in.
Celtis occidentalis, Hackberry.	Columbus	10 ft. 5½ in.
Cercis canadensis, Red Bud.	Cedar Hill, Fairfield Co.	5 ft.
Cornus florida, Dogwood.	Symmes Creek Valley, Lawrence County	3 ft. 4 in.
Crataegus mollis, Red-fruited Thorn.	Marblehead, Ottawa Co.	5 ft. 9 in.

Name.	Locality.	Circumference.
<i>Crataegus punctata</i> , Thorn.	Amanda, Fairfield Co.	1 ft. 6 in.
<i>Diospyros virginiana</i> , Persimmon.	Cedar Hill, Fairfield Co.	5 ft. 7½ in.
<i>Fagus americana</i> , Beech.	Arion, Scioto Co.	12 ft. 4 in.
<i>Fraxinus quadrangulata</i> , Blue Ash.	Columbus.	7 ft. 7½ in.
<i>Gleditsia triacanthos</i> , Honey Locust.	Sandusky.	10 ft. 2 in.
<i>Gymnocladus dioica</i> , Kentucky Coffee Tree.	Columbus.	7 ft. 9½ in.
<i>Liriodendron tulipifera</i> , Tulip Tree.	Hocking Co.	13 ft.
<i>Magnolia acuminata</i> , Cucumber Tree.	Lawrence Co.	4 ft. 8 in.
<i>Malus coronaria</i> , Crab Apple.	Amanda, Fairfield Co.	2 ft. 7½ in.
<i>Nyssa sylvatica</i> , Sour Gum.	Otway, Scioto Co.	8 ft. 10 in.
<i>Ostrya virginiana</i> , Ironwood.	Waynesville, Warren Co.	3 ft. 7 in.
<i>Oxydendrum arboreum</i> , Sorrel Tree.	Saltpetre Cave, Hocking Co.	4 ft. 8 in.
<i>Platanus occidentalis</i> , Sycamore.	Groveport, Franklin Co.	23 ft. 5 in.
<i>Quercus acuminata</i> , Yellow Oak.	Waynesville, Warren Co.	8 ft. 5 in.
<i>Quercus alba</i> , White Oak.	Bainbridge, Ross Co.	15 ft. 6 in.
<i>Quercus leana</i> , Lea's Oak.	Cedar Point, Erie Co.	4 ft. 5 in.
<i>Quercus macrocarpa</i> , Bur Oak.	Cedar Hill, Fairfield Co.	12 ft. 1 in.
<i>Quercus palustris</i> , Pin Oak.	Bainbridge, Ross Co.	8 ft. 1½ in.
<i>Quercus prinus</i> , Chestnut Oak.	Bainbridge, Ross Co.	9 ft. 8 in.
<i>Quercus stellata</i> , Iron Oak.	Cedar Hill, Fairfield Co.	10 ft. 10 in.
<i>Rhamnus carolinianus</i> , Buckthorn.	Cedar Mills, Adams Co.	11 in.
<i>Rhus hirta</i> , Staghorn Sumach.	Geneva, Ashtabula Co.	2 ft. 9 in.
<i>Robinia pseudacacia</i> , Black Locust.	Waynesville, Warren Co.	10 ft. 4 in.
<i>Sassafras sassafras</i> , Sassafras.	Bainbridge, Ross Co.	6 ft. 4 in.
<i>Ulmus americana</i> , American Elm.	Columbus.	15 ft. 8 in.