

2016

A Case of an Ant Head (*Crematogaster* sp.) Embedded within the Skin of a Green Treefrog (*Hyla cinerea*) from Northeastern Arkansas

C. S. Thigpen

Arkansas State University, christopher.thigpen@smail.astate.edu

S. E. Trauth

Arkansas State University

Follow this and additional works at: <http://scholarworks.uark.edu/jaas>

 Part of the [Entomology Commons](#), and the [Zoology Commons](#)

Recommended Citation

Thigpen, C. S. and Trauth, S. E. (2016) "A Case of an Ant Head (*Crematogaster* sp.) Embedded within the Skin of a Green Treefrog (*Hyla cinerea*) from Northeastern Arkansas," *Journal of the Arkansas Academy of Science*: Vol. 70 , Article 53.

Available at: <http://scholarworks.uark.edu/jaas/vol70/iss1/53>

This article is available for use under the Creative Commons license: Attribution-NoDerivatives 4.0 International (CC BY-ND 4.0). Users are able to read, download, copy, print, distribute, search, link to the full texts of these articles, or use them for any other lawful purpose, without asking prior permission from the publisher or the author.

This General Note is brought to you for free and open access by ScholarWorks@UARK. It has been accepted for inclusion in Journal of the Arkansas Academy of Science by an authorized editor of ScholarWorks@UARK. For more information, please contact ccmiddle@uark.edu, drowens@uark.edu, scholar@uark.edu.

A Case of an Ant Head (*Crematogaster* sp.) Embedded within the Skin of a Green Treefrog (*Hyla cinerea*) from Northeastern Arkansas

C.S. Thigpen* and S.E. Trauth

¹Department of Biological Sciences, Arkansas State University P.O. Box 599, State University, AR 72467

*Correspondence: christopher.thigpen@smail.astate.edu

Running Title: An Ant Head Embedded in the Skin of a Green Treefrog

A female green treefrog, *Hyla cinerea*, was collected on July 1 1989 from Poinsett County, Arkansas, 5 km north of Bay Village on Highway 163. The frog was euthanized, measured (snout-vent length = 55 mm), fixed in 10% neutral buffered formalin, and deposited into the Arkansas State University Herpetological Museum (ASUMZ 13380) in 70% v/v ethanol. During routine museum maintenance, a dark protuberance was noticed on the frog's left carpal area and, upon further inspection, was determined to be the head of an ant (Fig. 1).

The ant was identified as a member of the *Crematogaster* genus using Borror and Delong's Introduction to the Study of Insects (Tripplehorn and Johnson 2005) and an online identification key from Mississippi State University (MacGown 2003), but species could not be identified without the body. At the site of attachment, skin appeared to have healed around the mandibles of the ant. This would suggest the ant had been attached for some time, but exact time of attachment could not be determined. Literature on the subject is lacking and it would appear that this is one of, if not the first, published cases of a prey item remaining attached to a frog after foraging.

Acknowledgments

We would like to thank the Arkansas Game and Fish Commission for issuing the scientific collection permit and Dr. Tanja McKay at Arkansas State University for assistance in ant identification.

Literature Cited

- MacGown J. 2003. Ants (Formicidae) of the Southeastern United States. Mississippi Entomological Museum. <<http://mississippientomologicalmuseum.org.msstate.edu/Researchtaxapages/Formicidaepages/Identification.Keys.htm>> Accessed on 14 January 2016.
- Tripplehorn CA and NF Johnson. 2005. Borror and Delong's Introduction to the Study of Insects. 7th Ed. 863 p.

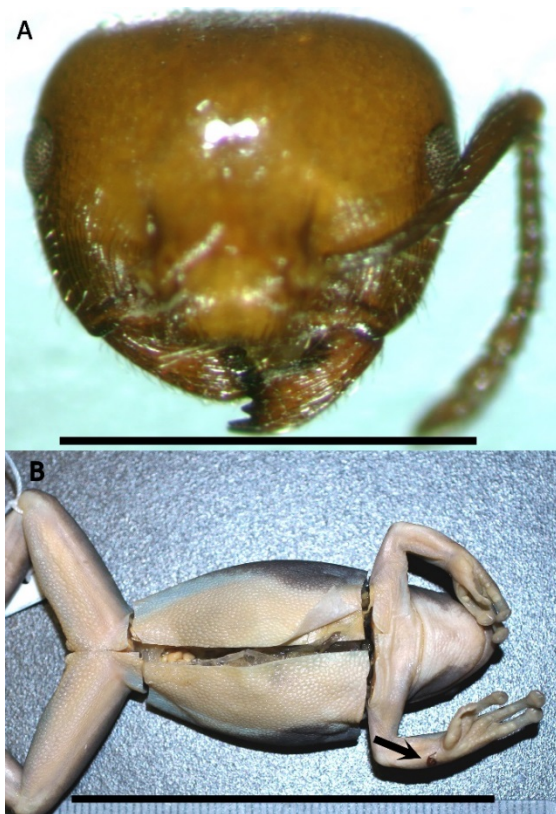


Figure 1. Ant head (A) attached to frog (arrow in B). Top scale = 1 mm, bottom scale = 55 mm.