



Aalborg Universitet

AALBORG UNIVERSITY
DENMARK

Parking Space Verification

Improving Robustness Using A Convolutional Neural Network

Jensen, Troels Høg Peter; Schmidt, Helge Thomsen; Bodin, Niels Dyremose; Nasrollahi, Kamal; Moeslund, Thomas B.

Published in:

Proceedings of the 12th International Joint Conference on Computer Vision, Imaging and Computer Graphics Theory and Applications

DOI (link to publication from Publisher):

[10.5220/0006135103110318](https://doi.org/10.5220/0006135103110318)

Publication date:

2018

Document Version

Accepted author manuscript, peer reviewed version

[Link to publication from Aalborg University](#)

Citation for published version (APA):

Jensen, T. H. P., Schmidt, H. T., Bodin, N. D., Nasrollahi, K., & Moeslund, T. B. (2018). Parking Space Verification: Improving Robustness Using A Convolutional Neural Network. In *Proceedings of the 12th International Joint Conference on Computer Vision, Imaging and Computer Graphics Theory and Applications* (Vol. 5, pp. 311-318). SCITEPRESS Digital Library. <https://doi.org/10.5220/0006135103110318>

General rights

Copyright and moral rights for the publications made accessible in the public portal are retained by the authors and/or other copyright owners and it is a condition of accessing publications that users recognise and abide by the legal requirements associated with these rights.

- ? Users may download and print one copy of any publication from the public portal for the purpose of private study or research.
- ? You may not further distribute the material or use it for any profit-making activity or commercial gain
- ? You may freely distribute the URL identifying the publication in the public portal ?

Take down policy

If you believe that this document breaches copyright please contact us at vbn@aub.aau.dk providing details, and we will remove access to the work immediately and investigate your claim.

Parking Space Verification

Improving Robustness Using A Convolutional Neural Network

Keywords: Computer Vision, Parking, Convolutional Neural Network, Deep Neural Network, Deep Learning

Abstract: With the number of privately owned cars increasing, the issue of locating an available parking space becomes apparent. This paper deals with the verification of vacant parking spaces, by using a vision based system looking over parking areas. In particular the paper proposes a binary classifier system, based on a Convolutional Neural Network, that is capable of determining if a parking space is occupied or not. A benchmark database consisting of images captured from different parking areas, under different weather and illumination conditions, has been used to train and test the system. The system shows promising performance on the database with an accuracy of 99.71 % overall and is robust to the variations in parking areas and weather conditions.

1 INTRODUCTION

In recent years the amount of cars on the roads has increased, this development not only leads to a higher demand on the traffic network, but also in the number of parking spaces.

This is further evidenced by (Shoup, 2006), who in 2006 researched the cruising time and distance driven when searching for a curb parking in Los Angeles. They discovered that the average cruising time and distance covered was 3.3 minutes and about 0.8 km, respectively. (Shoup, 2006) also argue that the average search time is 8.1 min. and that the average share of cars in traffic, searching for a parking space, was 30 %, these assertions are based on previous research, conducted in business districts between 1927 and 2001.

(Zheng and Geroliminis, 2016) also investigates the issue of cruising-for-parking and creates corresponding models, while suggesting it can be reduced by varying the parking price.

The increased strain on the road network, the time wasted and extra fuel used, makes it interesting to consider, if all these aspects can be reduced by providing the drivers with information about the nearest vacant parking space.

One approach, that is currently being used, is placing signs at focal points, which indicates the number of available parking spaces at specific parking areas. The issue is that the driver is not informed about the exact location of a vacant parking space. At parking areas where such specific information is available, the solution normally is to locate sensors in each parking space, e.g. infrared sensors, which can be placed both above of or in the parking space, or magnetometers

buried under the asphalt. Using several, possibly battery powered, sensors results in increasing price and maintainance as the size of the parking area increases.

One solution to this, could be to use a vision based system, where cameras are placed, such that they monitor a larger parking area, one sensor can thereby be used to deliver information about several parking spaces.

2 RELATED WORK

Previous effort have been put into developing vision based systems, with the intend of determining the vacancy of parking spaces.

One such attempt is (Funck et al., 2004), in which several images of the empty parking area, under different illumination conditions, are used to create an average image. Then Principal Component Analysis (PCA) is used to create an eigenspace representation. Reconstructing any new image from the eigenspace representation, yields a reference image with the current illumination, any difference between the new image and its eigenspace reconstruction is then defined as an object. The system only estimates the occupancy of the whole parking area and tests showed an average error rate of 10 %.

(True, 2007) used manually labeled Regions-Of-Interest (ROI). The system is divided into two parts, in the first part a color histogram is created for each parking space and is then classified using either k-Nearest Neighbour (kNN) or a Support Vector Machine (SVM). In the second part Harris corner detection is used on each parking space, in order to detect interest points. A feature vocabulary is then created

and classification is done by comparing the feature vocabulary from the test image with the one from the training set. Using color histogram and either kNN or SVM they achieved an error rate around 10 %, while the feature detection had an error rate of 51 %.

(Bhaskar et al., 2011) combined rectangle detection and Scale Invariant Feature Transform (SIFT). They worked with the assumption that a parking space is a rectangle of pixels in an image, the images used was captured from an aerial camera. Using a threshold based classifier, they achieved an accuracy of 96.9 %, since the system depends on the lines of the parking space to function, it is affected by partial or full occlusion of these, while also being dependent on the parking spaces being rectangular.

In (Masmoudi et al., 2014) a Homography transformation was used to change the point of view of the parking area, in order to reduce the effect of perspective distortion. The parking spaces are defined by using two corners of the first parking space and defining a width. They used Gaussian Mixture Model (GMM) for background subtraction and then only consider objects that overlap with the parking space model. For feature extraction they achieved the best results using Speeded Up Robust Features (SURFs), combined with SVM for classification. Their method achieved an accuracy above 92 % for all their tests, but was not robust against occlusion.

(Tschentscher et al., 2015) tested using both various color histograms and Difference-of-Gaussian (DoG) for feature extraction, combining them with either kNN, Linear Discriminant Analysis (LDA) or a SVM for classification. They achieved the most robust results using DoG and SVM, with an average accuracy of 96.42 % on a never seen parking area.

(Huang and Vu, 2015) proposed using a cube model for each parking space, each of the six surfaces of the cube is then normalized and the classifier is trained on all of the patches separately. For feature extraction. They used Histogram of Oriented Gradients (HOG), LDA for feature reduction and Naive Bayes Classifier (NBC) for classification. The performance of the system was tested under various weather conditions and achieved more than 99 % accuracy in all of them.

(Klosowski et al., 2015) proposed using 2D separable Discrete Wavelet Transform (DWT) and then applying morphological operations. Since they don't manually mark the parking spaces or automatically detect them, they count the pixels and thereby calculate the occupied percentage.

In (De Almeida et al., 2015) a database consisting of 12,417 images was introduced, including images from two different parking areas, one of them

from two different angles. Besides introducing the database, two systems were also proposed to solve the issue of vacancy verification. Both systems used textural descriptors, one Local Binary Pattern (LPB) and the other Local Phase Quantization (LPQ), both systems used SVM for classification. When training and testing the system on the same database, they achieved an average error rate around 0.5 %. When testing on parking areas that was not used for training, the lowest achieved error rate was 11 %.

(Baroffio et al., 2015) proposed a system using wireless cameras, connected in a network. The system assumes that the region of the parking spaces is known, these regions are then extracted, converted to HSV colorspace and the hue is then used to create a histogram, which is used as local features. For classification they used a linear SVM, based on normalized histograms. To test the accuracy, the authors used the PKLot database presented in (De Almeida et al., 2015), they achieved respective accuracies of 96 % on UFPR04, 93 % on UFPR05 and 87 % on PUCPR.

In (Masmoudi et al., 2016) a modified 3D model of the parking spaces was used, where the part in focus is the surface tangent to the street, in order to solve the issue of occlusion. They then track the objects in the scene, using GMM for background subtraction and the cars are chosen based on their dimensions, tracking is performed using a Kalman filter. Using SURFs and SVM, they detect the current state of each parking space. Combining tracking of the cars and local features from SURFs, they use a decision tree to make the final decision of the occupancy of the parking spaces. They achieved an accuracy of 94.23 % in the used data.

(Sukhinskiy et al., 2016) applied perspective transformation on the images and manually marked the parking spaces. By continuously getting a new frame of the parking area, they were able to compare the new frame to the old frame and thereby determine if the state of the parking space had changed. A pre-trained neural network was used for the final classification.

When solving computer vision based problems, the traditional way is to use handcrafted features, extracted from e.g. SIFT, HOG etc., combined with a classifier, SVM for example. In later years Convolutional Neural Networks (CNN) have gotten more attention, as they have shown great potential in pattern recognition tasks. An example of the impact CNN's have had can be seen in the ImageNet contest, where the winning system in 2011 had an error rate around 25 % and the year after it was reduced to 16 %, when AlexNet won (Russakovsky et al., 2015) (Krizhevsky et al., 2012). Since then, CNNs have become an inte-

gral part in our every day life, used in our Digital Personal Assistants, auto tagging our photos and translating from on language to another.

In (Valipour et al., 2016) a pre-trained CNN, VGGNet-f was used and fine-tuned to work on the PKLot database presented in (De Almeida et al., 2015). They used Stochastic Gradient Decent (SGD) with learning rate and weight decay and a mini-batch size of 128. They report their results using Area Under Curve (AUC), arguing that their method is 3 to 5 % better than the results in (De Almeida et al., 2015).

(Huang and You, 2016) propose using 3D point clouds, acquired by a Lidar, segment unwanted information, buildings, ground and curb and use three Orthogonal-Views as input to a CNN which test. Using the method they achieved an accuracy of 83.8 %.

(Ahrnbom et al., 2016) focuses on creating a fast classifier for detecting vacant parking spaces, which was tested on the PKLot database. For feature extraction they use 10 feature channels (LUV color space, gradient magnitude and quantized gradient channels), which are used with two classifiers, SVM and Logistic Regression with Elastic Net Regularization (LR). The best results were achieved using LR, the results are presented as AUC, with a mean value of 0.98, slightly better than the results from (De Almeida et al., 2015).

This paper will move away from the feature based approaches used in most of the work described above, instead a binary classification system using a CNN will be presented. Focus will also be put into designing a system, that is capable of delivering robust results, even on parking spaces that the system has not been trained to recognize.

In section 3 a short description of CNN will be presented and focus will then be on the proposed system and its elements. Section 4 will describe the resources, database, framework and hardware that was used to conduct the work presented. Section 5 will describe the tests conducted and reports corresponding results, while section 6 will discuss these and further work that could be looked into.

3 THE PROPOSED SYSTEM

CNNs are effective at processing data in the form of arrays, e.g. images, which makes it ideal for computer vision tasks (Lecun et al., 2015). CNNs are based on Multilayer Perceptrons (MLP), since these consist of fully connected layers, they do not scale well with image sizes. In contrast a CNN tries to take advantage of the spatially local correlation in images, by stacking the feature maps and only connect-

ing each neuron to a small region of the input volume, this is also called the receptive field of the convolutional layer. For each feature map, the weight and bias will be shared, this is possible by assuming that a feature which is useful to compute at one position, is also useful to compute at another spatial position

In general it can be said that the convolutional part of the method, creates a feature map, based on a feature extractor and the Neural Network part is the classifier and is used for updating the systems internal parameters, based on past experience.

A CNN normally consist of several convolutional layers, an activation function, pooling layers and lastly the classification layer, which is normally a fully connected Neural Network.

Figure 1 shows an overview of the CNN based solution.

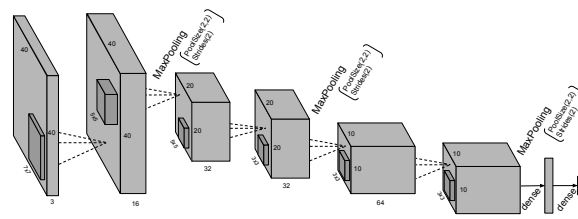


Figure 1: Illustration of the proposed CNN.

Our network consists of two convolutional layers, followed by a max pooling layer. The depth of the feature maps increases after every max pooling layer, but reduces in size. The network has a total 198,576 parameters and all the weights in the network are initialized randomly.

Convolutional layer As explained above, each convolutional layer consist of stacked feature maps, these are created by convolving a kernel over the input, together with the neurons parameters (weight and bias). The depth of the convolutional layer is the amount of feature maps that have been stacked. As can be seen on Fig. 1, the proposed system starts with a convolutional layer with an output having a depth of 16 and then increases the depth in the later layers, as the size of the feature map decreases. As the size of the feature map decrease, the kernel size is also reduced, the stride for the kernels is always 1.

In the early layers a CNN normally detects simple features, such as edges, then corners. In the later layers, the network starts to learn more complex features, which might seem abstract to the human eye.

Activation function CNNs are constructed of neurons, these have learnable weights and biases and can be expressed as the linear function:

$$y = w \cdot x + b \quad (1)$$

Where w is the weight, x the input and b is the bias. The activation function is an optional part of the nodes, it introduces a non-linearity to the output of the node, which is important in order to not create a linear decision boundary. The proposed system uses Rectified Linear Unit (ReLU) as the activation function, which can be expressed as:

$$f(x) = \max(0, x) \quad (2)$$

The reason for using the ReLU, is its computational efficiency, resulting in less training time. It doesn't have an issue with vanishing gradients and has shown to greatly accelerate convergence (Glorot et al., 2011).

Pooling layer A pooling layer is added between every second convolutional layer. The function of it, is to reduce the spatial size and thereby reduce the amount of parameters. This also helps to control overfitting. The reasoning behind it, is that the exact position of a found feature is not as important, as the its position relative to other features are.

For the proposed system max pooling with a 2x2 filter and a stride of 2 is used. In general it means that the output will be the highest value covered by the filter and that it moves along the input by 2.

Optimization The last part of the network, is the fully connected Neural Network followed by a loss layer. The fully connected layer performs classification while the loss layer tries to find the error. The idea is that the network learns by its mistake and then updates the parameters, weights and bias, throughout the system.

The proposed system uses the Cross-entropy cost function to calculate the error, which is then used by backpropagation in order to calculate the gradient for each weight. Lastly gradient descent is used to compute the changes that needs to be applied to the weights throughout the network, before starting over. Choosing a correct learning rate can be essential, a higher learning rate results in faster learning, but it might not end up at the ultimate minimal loss. choosing a too low value can result in very slow convergence, while a too high value can result in oscillation (Wilson and Martinez, 2003).

In this case AdaGrad is used to calculate the gradient descent. AdaGrad is a modified version of Stochastic Gradient Descent, which updates the parameters individually by using different learning rates

for every parameter. When using Adagrad the learning rate needs to be initialized at start, for this system it has been set at a value of 0.0001. The learning rate is then updated throughout training at every time step t and based on the parameters past computed gradient.

The weakness with using AdaGrad is that, since it automatically updates the learning rate, it continuously becomes smaller and the system might therefore learn slower or stop learning altogether. Compared to e.g. AdaDelta it is more robust to the initial learning rate, while converging is close to the same.

The batch size was set to 128 and when training the data was split, such that 1/6 of the images was used for validation.

Data augmentation was also introduced, which can help generating new data and at the same time introducing a bit of distortion into the data. Data augmentation can have positive effects on both accuracy and reduce overfitting, as explained in (Glorot et al., 2011) and (Simard et al., 2003). For this system both horizontal and vertical flipping was introduced, together with some shifting in height and width. Some slight rotation of the images was also used.

4 RESOURCES

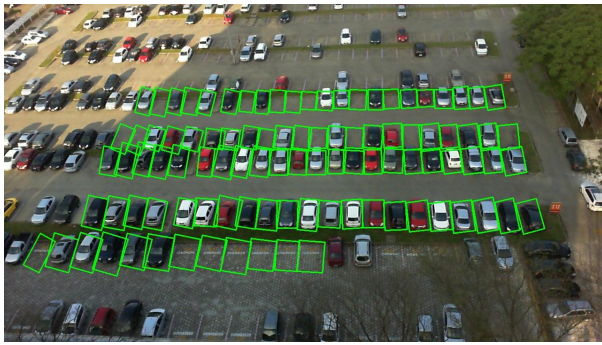
This section will look at the resources that was used in the project, this involves the database and the framework used.

4.1 Database

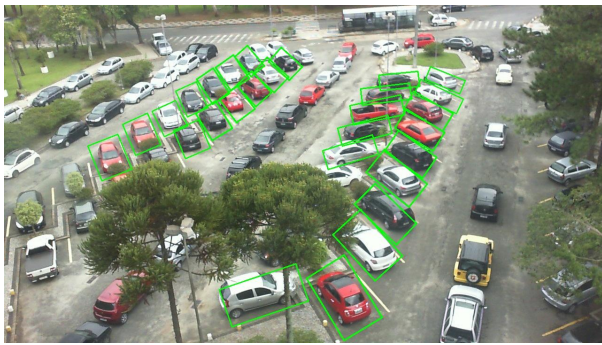
The PKLot database that was introduced by (De Almeida et al., 2015), will be used for this work. The reason for this, is that it provides a basis for comparison. This database consists of 12.417 images of the three parking areas, captured at a resolution of 1280x720 px. In total there is 695.900 images of parking spaces captured throughout the day and in three weather conditions, sunny, rainy and cloudy. The ground truth of the parking spaces is available as an XML file for each image of the parking area. It contains information about the state of the parking spaces and their pixel location and size.

An example of the three parking areas, together with bounding boxes for the segmented parking spaces, can be seen in Fig. 2.

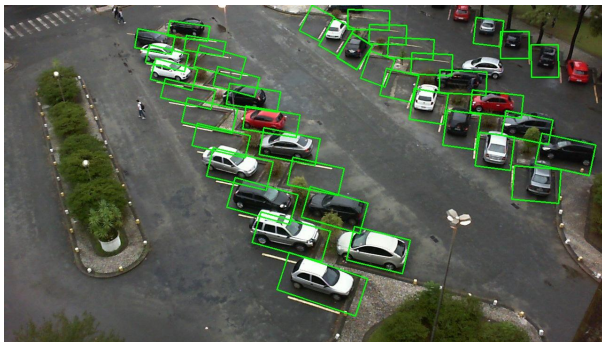
The images have already been preprocessed, such that each image of the parking areas, have been labeled. Each parking space have also been segmented and rotated, such that they match each other. As the focus of the work presented here, is to verify the vacancy of the parking spaces and in order to be able to



(a)



(b)



(c)

Figure 2: The three parking areas and their segmented spaces shown: a) PUCPR b) UFPR04 and c) UFPR05.

compare the systems, these images will be used.

Examples of segmented images, showing both occupied and vacant parking spaces can be seen in Fig. 3.

Since the segmented images have different sizes and thereby aspect ratio, they have all been scaled to 40x40 px and normalized, before being fed to the CNN.

Together with the PKLot database follows guidelines for how the training- and testing set should be created, they suggest dividing them 50/50 for each parking area. They also recommend having images captured the same day in the same set, such that the



Figure 3: Example of the segmented images of both occupied and vacant parking spaces.

same car is not used for both training and testing.

4.2 Framework

As explained earlier, CNNs have become an increasingly popular topic, which have resulted in a plethora of readily available frameworks. The most popular include TensorFlow by google, CNTK by Microsoft, Theano and Keras.

To realize the system described above, it has been chosen to use Theano together with Keras as they support python bindings, allowing for rapid prototyping (Theano Development Team, 2016). Theano is a library made for numerical computations and seamlessly uses the GPU, while Keras is a Neural Network library, capable of running on top of both Theano and TensorFlow which adds support for CNNs in Theano.

4.3 Hardware

The computer used for the tests, described in the next section, had the following specifications:

- Ubuntu 16.04 LTS
- Intel Core i7 860 @ 3.2 GHz
- NVIDIA GTX 780
- 8 GB RAM

In order to utilize the full potential of the GPU, NVIDIA CUDA was installed as a backend.

5 EXPERIMENTAL RESULTS

As described above the system have been trained and tested on the PKLot database. This section will look at the results achieved during testing.

Robustness of the system In order to test the robustness of the system, it have been trained on the individual parking areas and then tested on both the same parking area and on parking areas that have not been seen.

The accuracy can be seen in Fig. 4, as can be seen, when training and testing on the same parking area, the accuracy is in all cases above 99.70 %. The lowest accuracy achieved is 95.45 % when training on the UFPR05 and testing on UFPR04.

		Training		
		UFPR04	UFPR05	PUCPR
Testing	UFPR04	99.70 %	95.46 %	96.91 %
	UFPR05	95.96 %	99.76 %	96.72 %
	PUCPR	98.70 %	97.30 %	99.90 %

Figure 4: The results of the test, when training and testing on separate parking areas.

The robustness of the system will be seen as how well the system performs, when being tested on parking areas that it was not trained on. This means that a margin will be defined as being the difference between the accuracy achieved when testing on the same parking area, and the accuracy when tested on the two unseen parking areas. The robustness will then be the average of these margins, with lower percentages showing a more robust system.

Applying this to the results achieved in (De Almeida et al., 2015), using the highest accuracy regardless of the method used, reveals an average margin of 11.95 %.

Applying the same method on the results achieved by the proposed system, reveals an average margin of 2.96 %. The system has therefore shown to be significantly more robust than the competing system.

Table 1 shows a comparison of the error rate between (De Almeida et al., 2015) and the proposed system, when they have been trained and tested on the same parking area. As can be seen, the proposed system greatly improves the results on especially the PUCPR and UFPR05 parking area.

Table 1: Comparison of error rate, when training and testing on the same parking area.

	P. De Almeida	Proposed CNN
PUCPR	0.39 %	0.10 %
UFPR04	0.36 %	0.30 %
UFPR05	0.70 %	0.24 %

Overall accuracy of the system In order to get a feeling of the systems overall performance, it has been trained on all the available training data. It has then been tested on the training data from the three parking areas individually and all the available testing data.

The result from this test can be seen in table 2.

Table 2: Training on all the parking areas and testing on the different parking spaces and all of them.

UFPR04	UFPR05	PUCPR	All
99.74 %	99.20 %	99.88 %	99.71 %

All of the conducted tests, have an accuracy above 99 %, with the overall accuracy being 99.71 %.

An example of the classification can be seen on Fig. ??, the example shows the PUCPR parking area with corresponding bounding boxes, red being vacant and green occupied.

6 DISCUSSION

One of the more difficult tasks in parking space verification, is to design a system that is able to perform reliably, when shown new parking spaces compared to what it was trained on. The goal have been to design a system that is robust and can deliver good performance when being tested under there circumstances.

This paper has introduced a system, based on a Convolutional Neural Network, that is able to verify the vacancy of a parking space.

The proposed CNN has shown promising performance in these cases, with a robustness margin of 2.96 %, which is about 4 times better than previous efforts. It have other than that, shown high accuracy when introduced to new parking spaces, with the lowest accuracy achieved being 95.45 % and the highest 98.70 %.

Besides this the system have shown to perform well under different illuminations, as the results when training the system on all of the training data have shown. During these tests the accuracy was all above 99 %, with an overall accuracy at 99.71 %, when testing on all of the testing data.

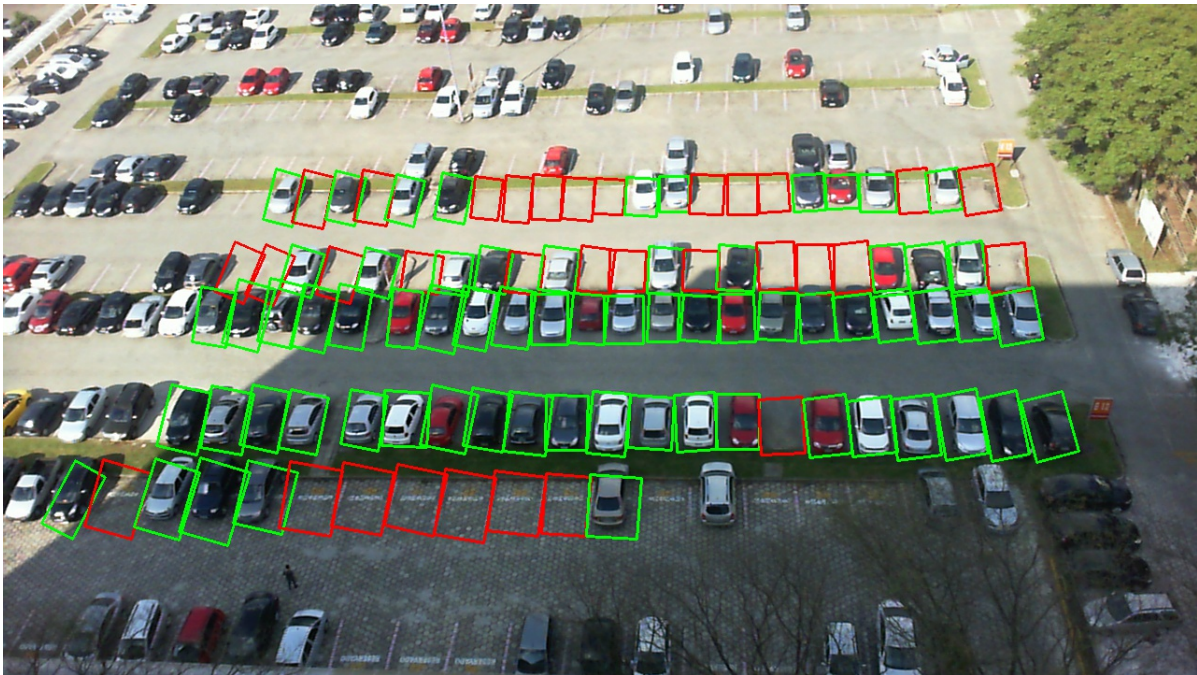


Figure 5: An example of a classification performed on an image from the PUCPR parking area. Green being a detected vehicle and red a vacant parking space.

6.1 Future work

Future work on the system, could involve testing the system under more extreme illumination challenges. The PKLot database used in this work, does not provide images at dusk or night time and it could be interesting to see how the system would handle these situations. One prerequisite for this would be though, that the parking area were lit by e.g. street light.

Other improvements to the system could involve automatic detection of the parking spaces, as this would ease the process of installing the system at a new location. One method to do this, could be by assuming all parking spaces are bound by two easy identifiable lines and are parallel to each other.

REFERENCES

- Ahrnbom, M., Astrom, K., and Nilsson, M. (2016). Fast classification of empty and occupied parking spaces using integral channel features. In *The IEEE Conference on Computer Vision and Pattern Recognition (CVPR) Workshops*.
- Baroffio, L., Bondi, L., Cesana, M., Redondi, A. E., and Tagliasacchi, M. (2015). A visual sensor network for parking lot occupancy detection in smart cities. In *Internet of Things (WF-IoT), 2015 IEEE 2nd World Forum on*, pages 745–750.
- Bhaskar, H., Werghe, N., and Al-Mansoori, S. (2011). Rectangular empty parking space detection using sift based classification. In *VISAPP*, pages 214–220.
- De Almeida, P. R. L., Oliveira, L. S., Britto, A. S., Silva, E. J., and Koerich, A. L. (2015). PKLot-A robust dataset for parking lot classification. *Expert Systems with Applications*, 42(11):4937–4949.
- Funck, S., Mohler, N., and Oertel, W. (2004). Determining Car-Park Occupancy from Single Images. *Intelligent Vehicles Symposium, 2004 IEEE*, pages 325–328.
- Glorot, X., Bordes, A., and Bengio, Y. (2011). Deep sparse rectifier neural networks. In Gordon, G. J. and Dunson, D. B., editors, *Proceedings of the Fourteenth International Conference on Artificial Intelligence and Statistics (AISTATS-11)*, volume 15, pages 315–323. Journal of Machine Learning Research - Workshop and Conference Proceedings.
- Huang, C. C. and Vu, H. T. (2015). A multi-layer discriminative framework for parking space detection. In

- 2015 IEEE 25th International Workshop on Machine Learning for Signal Processing (MLSP), pages 1–6.
- Huang, J. and You, S. (2016). Vehicle detection in urban point clouds with orthogonal-view convolutional neural network. In *2016 IEEE International Conference on Image Processing (ICIP)*, pages 2593–2597.
- Klosowski, M., Wojcikowski, M., and Czyzewski, A. (2015). Vision-based parking lot occupancy evaluation system using 2D separable discrete wavelet transform. *Bull. Polish Acad. Sci. Tech. Sci.*, 63(3):569–573.
- Krizhevsky, A., Sutskever, I., and Hinton, G. E. (2012). ImageNet Classification with Deep Convolutional Neural Networks. *Adv. Neural Inf. Process. Syst.*, pages 1–9.
- Lecun, Y., Bengio, Y., and Hinton, G. (2015). Deep learning. *Nature*, 521(1):436–444.
- Masmoudi, I., Wali, A., Jamoussi, A., and Alimi, A. M. (2014). Vision based system for vacant parking lot detection: Vpld. In *Proceedings of the 9th International Conference on Computer Vision Theory and Applications (VISIGRAPP 2014)*, pages 526–533.
- Masmoudi, I., Wali, A., Jamoussi, A., and Alimi, M. A. (2016). Trajectory analysis for parking lot vacancy detection system. *IET Intelligent Transport Systems*, 10(7):461–468.
- Russakovsky, O., Deng, J., Su, H., Krause, J., Satheesh, S., Ma, S., Huang, Z., Karpathy, A., Khosla, A., Bernstein, M., Berg, A. C., and Fei-Fei, L. (2015). ImageNet Large Scale Visual Recognition Challenge. *International Journal of Computer Vision (IJCV)*, 115(3):211–252.
- Shoup, D. C. (2006). Cruising for parking. *Transport Policy*, 13(6):479–486.
- Simard, P., Steinkraus, D., and Platt, J. C. (2003). Best Practices for Convolutional Neural Networks Applied to Visual Document Analysis. *Proc. 7th Int. Conf. Doc. Anal. Recognit.*, pages 958–963.
- Sukhinskiy, I. V., Nepovinnykh, E. A., and Radchenko, G. I. (2016). Developing a parking monitoring system based on the analysis of images from an outdoor surveillance camera. In *2016 39th International Convention on Information and Communication Technology, Electronics and Microelectronics (MIPRO)*, pages 1603–1607.
- Theano Development Team (2016). Theano: A Python framework for fast computation of mathematical expressions. *arXiv e-prints*, abs/1605.02688.
- True, N. (2007). Vacant parking space detection in static images. *University of California, San Diego*.
- Tschentscher, M., Koch, C., König, M., Salmen, J., and Schlipsing, M. (2015). Scalable real-time parking lot classification: An evaluation of image features and supervised learning algorithms. In *2015 International Joint Conference on Neural Networks (IJCNN)*, pages 1–8.
- Valipour, S., Siam, M., Stroulia, E., and Jagersand, M. (2016). Parking stall vacancy indicator system based on deep convolutional neural networks.
- Wilson, D. and Martinez, T. R. (2003). The general inefficiency of batch training for gradient descent learning. *Neural Networks*, 16(10):1429 – 1451.
- Zheng, N. and Geroliminis, N. (2016). Modeling and optimization of multimodal urban networks with limited parking and dynamic pricing. *Transportation Research Part B: Methodological*, 83:36 – 58.