

Soybean

1986 Missouri Crop Performance

Minor, Morris, Mason, Knerr, Lawman

Special Report 348 December, 1986

Agricultural Experiment Station

University of Missouri-Columbia

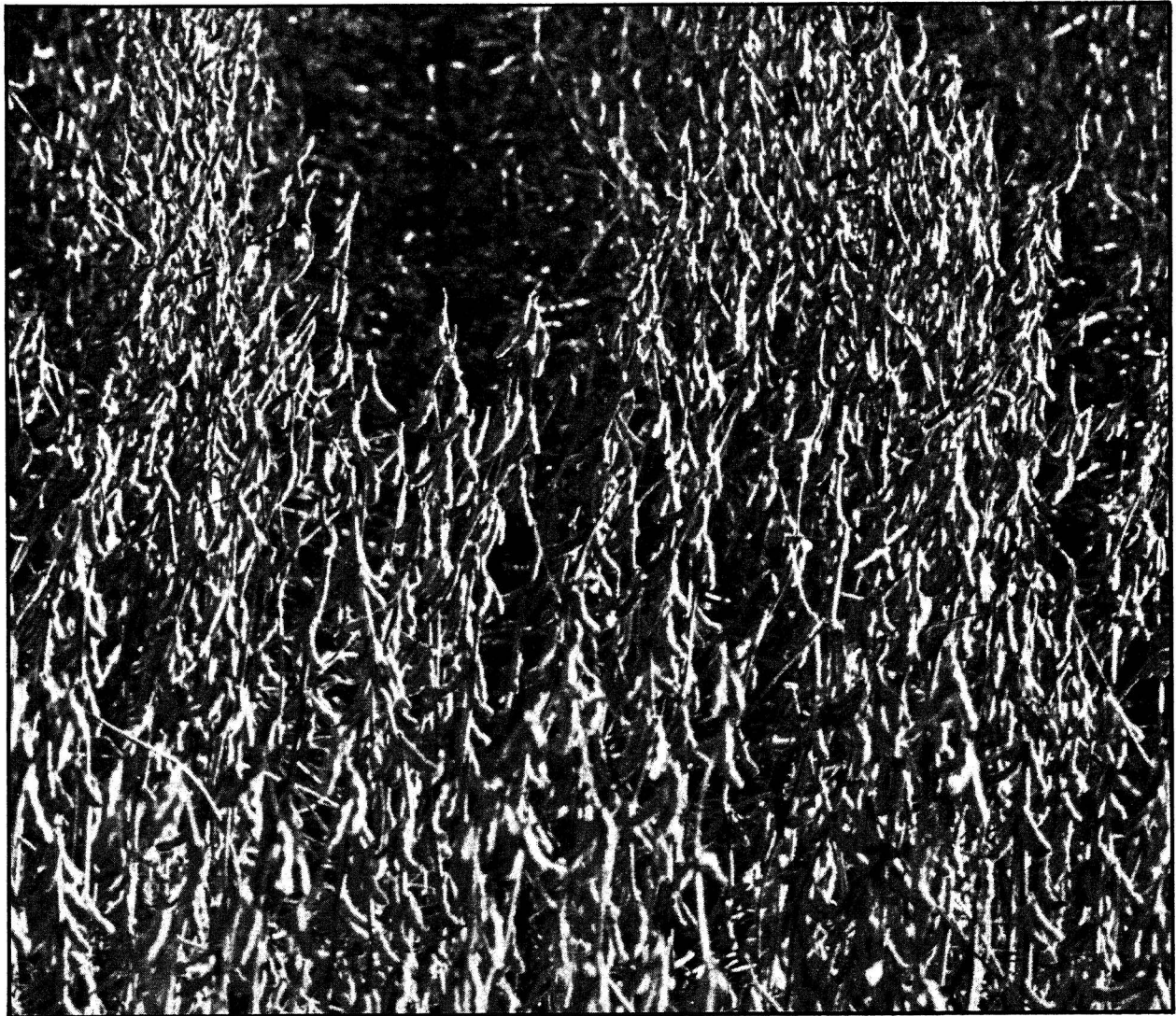


TABLE OF CONTENTS

COMPARING VARIETIES	3
EXPERIMENTAL PROCEDURES	3
Entries	3
Map of Test Locations (Figure 1).....	4
Field Plot Design	4
Plot Management	4
Cultural Practices (Table 1)	4
Data Recorded	5
RESULTS	5
Yield Summary (Table 2)	5
Standard Tests	
Barnard (Table 3)	6
Laredo (Table 4)	8
Novelty (Table 5)	10
Northern Summary (Table 6)	12
Marshall (Table 7)	14
Lamar (Table 8)	16
Essex (Table 9)	17
Portageville (Table 10)	18
Southeastern Summary (Table 11)	19
Experimental Tests	
Barnard (Table 12)	20
Laredo (Table 13)	21
Novelty (Table 14)	22
Northern Summary (Table 15)	22
Marshall (Table 16)	23
Lamar (Table 17)	23
Essex (Table 18)	24
Portageville (Table 19)	25
Southeastern Summary (Table 20)	26
SOYBEAN CHARACTERISTICS (Table 21)	27
SOYBEAN SEED COMPANY ADDRESSES (Table 22)	31

THE AUTHORS

Harry C. Minor is an Associate Professor of Agronomy and State Extension Specialist, Carl G. Morris and Howard L. Mason are Senior Research Specialists, and Delbert R. Knerr and Eric E. Lawman are Research Specialists.

ACKNOWLEDGEMENTS

The authors recognize and express their appreciation to the following individuals for their part in making the 1986 soybean trials possible: Meyer Brothers, Barnard; Randy Foster, Laredo; Randall Smoot, Foreman, Greenley Memorial Center, Novelty; Frank Swisher, Marshall; Jim Hellabush, Marthasville; Wally Norton, Lamar; Lance Cannon, Essex; and Joe Scott, Superintendent, Delta Center, Portageville.

Special recognition is also given to Wayne Flanary, Nodaway County; Rodney Hexem, Grundy County; Roger Wilkins, Knox County; Ron Alexander, Saline County; Gary Hoette, Warren County; Calvin Jones, Barton County; John Cairns, Stoddard County; and Jake Fischer, Pemiscot County, for their assistance in recording maturity dates at their appropriate county trial.

MISSOURI CROP PERFORMANCE

1986

SOYBEAN

This report on Research Project 363 is a contribution of the Department of Agronomy, University of Missouri Agricultural Experiment Station. This work was supported in part by funds from the Missouri Seed Improvement Association and fees from the companies submitting varieties for evaluation.

Soybeans were first included in the University of Missouri's variety performance testing program in 1973. The number of entries in the program has grown from 51 in 1973 to 289 today.

The large number of varieties available makes selection of a superior variety difficult. To select intelligently, producers need a reliable, unbiased, up-to-date source of information that will permit valid comparisons among available varieties. The objective of the University of Missouri's performance testing program is to provide this information. The tests are conducted under as uniform conditions as possible. Small plots are used to reduce the chance of soil and climatic variations occurring from one plot to another. Results obtained should aid the individual grower to judge the relative merits of many of the commercial soybean varieties available in Missouri today.

COMPARING VARIETIES

The performance of a variety cannot be measured with absolute precision. Uncontrollable variability is involved in the determination of each yield average. This variability sometimes occurs because the soil isn't uniform, but many other conditions may contribute to it. Because variability exists in all field experimentation, statistics are used as a tool to assist in making decisions. The statistical tool used for these trials is the test of least significant difference (L.S.D.). The L.S.D. is quite simple to apply. When two entries are compared and the difference between them is greater than the L.S.D., the entries are judged to be significantly different. Differences smaller than the L.S.D. may have occurred by chance and are judged to be not significant.

Variety performance may seem inconsistent from location to location and from year to year because of differences in rainfall, temperature, soil fertility, diseases, insects, and other factors. To obtain an improved estimate of relative variety performance, readers should consider results from more than one location or year. In this publication, the authors have tried to facilitate comparisons across years or locations.

In each trial, the "top yielding" varieties in each maturity group have been identified. These varieties are those that did not yield significantly less than the highest yielding variety in the same maturity group. They are denoted in the tables by an asterisk (*) next to their yields. Thus, by going down a column, the highest yielding varieties can be readily identified. By going across, the relative performance of a variety during several years or at several locations can be evaluated. From the standpoint of yield, the most desirable varieties will be those among the "top yielding" varieties (that is, have an asterisk) the greatest number of times.

Although yield usually receives first consideration, other agronomic characteristics may be equally important when selecting a soybean variety. Standability, maturity, and disease resistance are among the characteristics that deserve careful consideration. Several diseases prevalent in Missouri can be devastating to susceptible varieties. Lodging may reduce yields and slow harvest. Poor seed quality is often associated with varieties which mature while temperatures are still high, and late maturing varieties are occasionally killed by frost. Selection of varieties from several maturity groups can be helpful in spreading harvest dates. Therefore, information presented on disease reaction, lodging, and maturity group should be considered when selecting a variety.

The Missouri Agricultural Experiment Station does not recommend specific varieties. Farmers growing a new variety for the first time should consider the information contained in this report and then grow a small acreage to determine adaptability. This should be the practice for all new varieties regardless of the origin.

EXPERIMENTAL PROCEDURES

On the basis of geographic characteristics, the state was divided into regions. Soybean variety evaluations were located in the northern, central, southwestern, and southeastern regions of the state. Locations of individual sites are shown in Figure 1, Page 4.

Entries. Two types of tests were conducted. 'Standard' tests evaluated varieties, brands, or blends currently marketed in Missouri. 'Experimental' tests evaluated experimental lines and released varieties, brands, or blends not currently marketed in Missouri. All producers of soybean seed were eligible to enter varieties or blends in the 1986 evaluation plots. Participation was voluntary, and no control was exercised by the program over which, or how many, varieties were entered. However, to help finance the evaluation program, a fee of \$90 per location was charged for each entry.

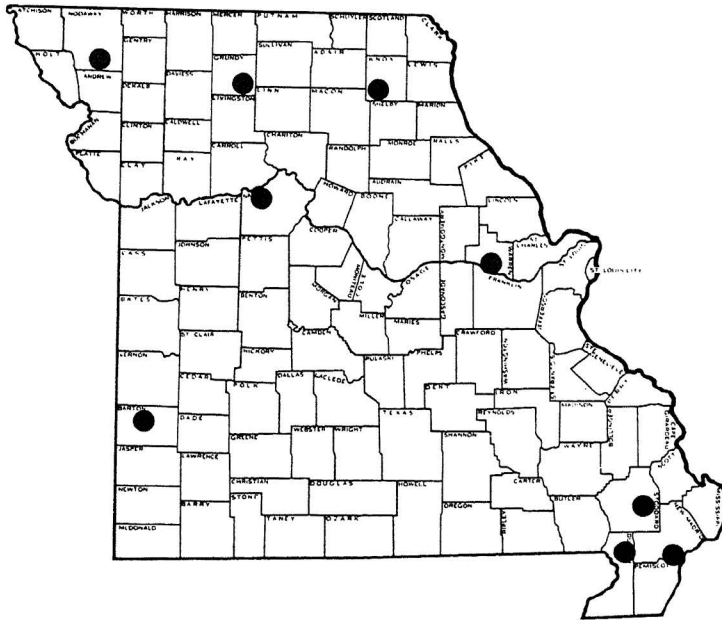


FIGURE 1. TEST SITE LOCATIONS.

Field Plot Design. A lattice design or a randomized complete block design with three or four replications was used. Individual plots were four rows wide and 20 feet long. The center two rows of these plots were harvested to determine yield.

Plot Management. The tests were planted with commercial equipment modified for small plot work. Fertilizer applied at each site was equal to, or above, that recommended by the University of Missouri's Soil Testing Laboratory. Herbicides and cultivation were used for weed control, and plots were additionally hand weeded as necessary. All plots were end trimmed to 16 feet prior to harvest. Management details varied from location to location and are summarized below.

TABLE 1. CULTURAL PRACTICES OF THE 1986 SOYBEAN EVALUATION TRIALS.

LOCATION (COUNTY)	N-P205-K20	-----HERBICIDE-----		ROW SPACING (IN)	DENSITY (PLANTS/A)	DATE OF PLANTING	DATE OF HARVEST
		PRE-PLANT	POST				
BARNARD (NODAWAY)	0- 40-120	DUAL + SCEPTOR	CLASSIC + POAST	30	156,800 9 SD/FT	6-02-86	10-30-86
LAREDO (GRUNDY)	0- 0- 0	SONOLAN	CLASSIC	30	156,800 9 SD/FT	5-27-86	10-29-86
NOVELTY (KNOX)	0- 0- 0	DUAL + SENCOR	NONE	30	156,800 9 SD/FT	6-02-86	11-10-86 11-12-86
MARSHALL (SALINE)	0- 0- 0	LASSO + LOROX + SENCOR	CLASSIC + BLAZER	30	156,800 9 SD/FT	5-07-86	10-21-86
MARTHASVILLE (WARREN)	0- 0- 0	LASSO + LOROX	NONE	30	156,800 9 SD/FT	5-05-86	ABANDONED
LAMAR (BARTON)	0- 60- 60	DUAL + LOROX	BLAZER + BASAGRAN + 2,4-DB	30	156,800 9 SD/FT	5-02-86	10-30-86
CLARKTON (DUNKLIN)	24- 0- 0	TREFLAN + SCEPTOR	BASAGRAN	38	123,700 9 SD/FT	5-08-86	ABANDONED
ESSEX (STODDARD)	0- 0- 0	DUAL + LOROX + SENCOR	NONE	36	130,700 9 SD/FT	5-06-86	10-17-86
PORTAGEVILLE (PEMISCOT)	24- 0- 0	TREFLAN + SCEPTOR	BASAGRAN	30	156,800 9 SD/FT	5-07-86	10-16-86

Data Recorded. Maturity group classification was indicated by the entry sponsor. Maturity data were recorded when approximately 75 percent of pods had turned color. Lodging and height were determined immediately before harvest. A scale of 1 to 5 was used to score lodging. Interpretation of the scale is as follows:

- 1 = all plants erect;
- 2 = all plants leaning slightly or a few plants down;
- 3 = all plants leaning moderately or 20 to 50% down;
- 4 = all plants leaning considerably or 50 to 80% down;
- 5 = all plants down.

Yield was measured in bushels (60 pounds) per acre at a moisture content of 13.0 percent. An electronic moisture tester was used for all moisture readings.

SUMMARY OF RESULTS

Results are presented by regions of the state. For each entry and location, data on maturity, plant height, lodging, and yield adjusted to 13.0 percent moisture are given. As emphasized previously, because of the influence of environmental conditions on soybean productivity, the reader is encouraged to give more weight to results from several locations or years than to those from a single test.

Soybean varieties and blends were evaluated in nine standard studies and eight experimental studies in 1986 (Figure 1, Page 4). An overview of management is given in Table 1, Page 4.

Average yields and ranges observed at each location are summarized below in Table 2. The ranges shown give the value for the lowest and highest yielding varieties in each test. They provide an indication of the variation in yield potential among soybean varieties available on the market in Missouri. Use of data presented in the individual location tables of this Special Report should increase the probability of selecting varieties that combine high yield potential with other agronomic characteristics appropriate to specific farming situations.

The experimental studies were composed of experimental lines and varieties, brands or blends that were not currently released to the public or marketed in Missouri. Well-adapted varieties were included as checks.

TABLE 2. SOYBEAN YIELD SUMMARY

LOCATION	NUMBER OF ENTRIES	YIELD (BUSHEL/ACRE)		DATA TABLE
		RANGE	AVERAGE	
<u>STANDARD TESTS</u>				
BARNARD	156	34-56	46	3
LAREDO	156	23-51	40	4
NOVELTY	156	23-42	33	5
MARSHALL	124	50-79	65	7
MARTHASVILLE	124	-	-	-
LAMAR	47	16-47	30	8
CLARKTON	30	-	-	-
ESSEX	50	32-56	49	9
PORTAGEVILLE	50	27-53	42	10
<u>EXPERIMENTAL TESTS</u>				
BARNARD	20	44-59	49	12
LAREDO	20	37-51	43	13
NOVELTY	20	26-36	30	14
MARSHALL	18	56-75	66	16
MARTHASVILLE	18	-	-	-
LAMAR	11	25-39	30	17
ESSEX	21	26-55	45	18
PORTAGEVILLE	21	20-49	36	19

- DATA NOT AVAILABLE.

The Marthasville test was lost because it was flooded by the Missouri River for a prolonged period of time. Silt deposits on and in the pods made determining yield impossible. The evaluation conducted in the cyst-nematode infested field at Clarkton was abandoned due to extreme variability in established stands. Seedling mortality was high in some plots following the initial planting on May 8. This may have been the result of herbicide injury. Partial reseeding increased plot-to-plot variability because of marked difference in plant development from the two dates of planting. At harvest, yields ranged from 7.8 to 38.2 bushels/acre, but differences between varieties were not generally significant.

TABLE 3. PERFORMANCE OF SOYBEAN VARIETIES EVALUATED NEAR BARNARD ON THE MEYER BROTHERS FARM IN 1986 AND NEAR FAIRFAX ON THE SEYMOUR BROTHERS FARM DURING 1984-85. PLANTED: 2 JUNE 1986. HARVESTED: 30 OCTOBER 1986. PLANTING RATE: 9 SEEDS/FT.

BRAND-VARIETY	1986			LODGING SCORE(1-5)			YIELD (BU/ACRE)		
	MATU- RITY DATE	PLANT HEIGHT (IN)	1986	1985	1984	1986	1985	1984	
MATURITY GROUP 2									
AMERICANA MARINER	9-21	47.5	3.0	2.6	1.3	49.0**	47.5*	41.9*	
S-BRAND S-48c	9-21	47.7	3.0	2.0	--	45.9*	50.8*	--	
MERSCHMAN CHEYENNE III	9-25	46.2	2.6	--	--	45.8*	--	--	
MASCO 8341	9-20	44.5	3.6	2.6	1.0	45.1*	49.6*	38.5	
BRAD 29	9-17	49.9	3.0	--	--	44.3**	--	--	
RANDELL MAHASKA	9-20	48.3	3.0	1.0	1.0	43.7*	51.5*	45.9**	
FONTANELLE 6161	9-21	44.5	2.6	1.5	1.6	43.0**	51.0*	42.3*	
HOFLER SUNSTONE	9-23	44.9	3.3	--	--	42.6**	--	--	
KELLER KNOX	9-21	46.1	3.6	1.7	1.0	42.3	49.9*	40.4*	
CENTURY 84	9-14	41.1	2.6	--	--	42.2	--	--	
McCUBBIN TAYLOR	9-20	47.0	3.6	2.4	1.0	41.8	48.9*	40.3*	
FONTANELLE 5708	9-21	47.6	4.0	2.6	1.6	41.4	52.6*	40.3*	
LEWIS 266	9-19	47.0	2.3	--	--	41.0	--	--	
PIONEER 9292	9-20	41.4	2.6	--	--	41.0	--	--	
RHS 6592	9-22	47.4	2.3	--	--	40.7	--	--	
REEDS 222	9-21	46.3	3.6	2.9	1.3	40.6	50.3*	44.2*	
HOFLER GEM	9-18	47.3	4.3	3.7	1.0	40.2	50.8*	38.8	
DIAMOND BRAND TC204A	9-20	43.5	4.0	--	--	40.2	--	--	
RAY-CARROLL NORBORNE	9-19	47.6	3.6	--	--	37.8	--	--	
SRF 250	9-19	47.4	3.3	1.2	--	34.2	44.7	--	
MATURITY GROUP AVERAGE	9-21	46.2	3.2	2.3	1.2	42.1	48.6	40.0	
MATURITY GROUP LSD AT .05		3.7	0.8	0.8		6.4	5.4	5.9	
MATURITY GROUP 3									
STINE 3790	9-27	46.3	3.0	--	--	55.5**	--	--	
WILSON BLEND 3182	9-25	43.0	2.6	--	--	53.9*	--	--	
PRIZE 622	10- 1	45.3	2.3	--	--	52.6**	--	--	
ASGROW A3733	9-27	40.0	1.6	--	--	52.1*	--	--	
MERSCHMAN KENNEDY II	9-25	45.6	2.3	1.3	--	51.0**	44.1	--	
CFS 32	9-25	45.3	4.0	--	--	50.8*	--	--	
NORTHRUP KING S39-99	9-27	48.0	2.6	1.0	--	50.8*	47.7*	--	
MERSCHMAN WASHINGTON VI	9-28	46.0	2.3	--	--	50.7**	--	--	
FS HISOY BRAND HS 348	9-30	43.0	3.0	1.6	--	50.5**	47.0	--	
CHAMBERLAND	9-24	53.0	3.6	--	--	50.1**	--	--	
RANDELL HAWK	9-24	45.0	2.6	2.0	--	50.1**	42.0	--	
RANDELL RR 3040	9-25	46.0	3.0	--	--	49.9**	--	--	
HIDY BINBUSTER 4250	9-24	51.0	3.0	2.7	--	49.8	44.6	--	
AMERICANA TAURUS	9-27	52.3	3.3	--	--	49.7	--	--	
STINE 3500	9-26	45.3	2.6	--	1.3	49.5	--	41.6	
DEKALB-PFIZER CX366	9-24	48.6	2.6	--	--	49.4	--	--	
DIAMOND BRAND D320B	9-25	46.6	2.3	1.6	--	49.3	42.5	--	
ASGROW A3803	9-28	42.0	2.3	1.3	--	48.9	48.8*	--	
DIAMOND BRAND D315	9-24	46.0	3.6	1.6	--	48.8	46.6	--	
MASCO 8493	9-25	50.6	3.6	1.6	1.6	48.8	46.8	43.4*	
WILSON BLEND 3560	10- 1	46.0	3.3	2.3	--	48.6	46.8	--	
MASCO 8604	9-24	44.6	3.3	--	--	48.5	--	--	
TERRA TRIUMPH	9-26	45.6	3.3	--	--	48.2	--	--	
KELLER K-924	9-24	45.3	3.0	--	--	48.0	--	--	
FS HISOY BRAND HS 302	9-24	41.3	2.3	--	--	48.0	--	--	
PRAIRIE BRAND GALAXY	9-23	45.6	4.0	--	--	47.9	--	--	
MERSCHMAN JEFFERSON V	9-26	45.3	3.0	--	--	47.8	--	--	
PIONEER 9361	9-25	47.0	3.0	--	--	47.8	--	--	
ASGROW A3427	9-24	41.6	3.0	1.6	--	47.7	48.3*	--	
MERSCHMAN TRUMAN II	9-25	47.6	3.6	1.3	1.6	47.6	43.7	43.6*	
LEWIS 300	9-24	44.6	3.0	--	--	47.5	--	--	
NECO 950	9-24	49.6	3.0	1.6	--	47.5	42.9	--	
MERSCHMAN MONROE	9-28	48.3	2.6	2.0	--	47.4	46.6	--	
JMS 3186	9-25	46.3	3.0	--	--	47.2	--	--	
MASCO DYNAMO II	9-24	48.0	3.6	2.0	1.6	47.2	46.7	44.9*	
ZANE	9-25	46.0	3.3	1.6	1.0	47.1	46.9	39.5	
AMERICANA ATLANTIS	9-24	54.3	3.3	--	--	47.1	--	--	
FONTANELLE 6464	9-30	51.0	3.6	2.3	2.3	47.0	45.9	39.9	
OHLDE 4386	10- 8	58.6	4.3	2.0	3.3	46.8	47.9*	36.6	
TERRA ADVANCE	9-24	45.6	2.6	--	--	46.8	--	--	
SILER SS-325	9-28	46.0	3.6	1.7	--	46.5	46.8	--	
PELLA 86	9-20	45.6	2.3	1.3	--	46.4	47.8*	--	
DIAMOND BRAND D280B	9-20	45.0	3.3	--	--	46.4	--	--	
MERSCHMAN JEFFERSON III	9-24	45.0	3.6	--	1.3	46.4	--	40.8	
AGRIPRO AP 3773	9-24	46.3	2.6	--	--	46.2	--	--	
FUNK G3399	10- 1	47.0	3.0	1.6	--	46.1	42.6	--	
REEDS 333	9-25	47.3	3.0	1.6	1.0	46.1	48.9*	40.8	
HOFLER CRYSTAL	9-24	45.3	4.0	1.6	--	46.0	51.1*	--	
RING AROUND RA303	9-22	46.6	3.6	2.3	2.0	46.0	44.9	39.6	
RANDELL RR 3030	9-24	43.0	4.0	--	--	46.0	--	--	
S-BRAND S-58A	9-25	43.6	3.6	1.3	1.0	45.9	49.7*	44.5*	
JMS 3482	9-24	48.3	4.0	1.6	1.6	45.8	46.7	44.8*	
SHERMAN	9-24	42.6	4.0	1.0	--	45.7	49.9*	--	
DIAMOND BRAND D245	9-23	50.0	4.0	--	--	45.5	--	--	
PRIZE 623	9-25	46.0	2.6	--	--	45.5	--	--	
HIDY BINBUSTER 3802	9-28	43.0	4.0	1.3	--	45.4	48.3*	--	
McCUBBIN TROY	9-23	48.6	2.6	1.0	1.3	45.2	48.6*	44.6*	
CFS 37	9-24	44.6	3.3	--	--	45.1	--	--	
FAYETTE	9-25	54.0	4.0	1.6	2.0	44.9	41.2	39.9	
HOBBIT	9-24	21.3	1.0	1.0	1.0	44.9	47.7*	34.9	
MERSCHMAN JEFFERSON IV	9-25	46.6	3.3	1.6	--	44.9	45.5	--	
PELLA	9-23	46.3	2.3	1.6	1.0	44.8	44.7	42.2	
S-BRAND S-60H	9-25	45.6	3.0	1.0	--	44.7	48.0*	--	

TABLE 3. CONTINUED.

BRAND-VARIETY	1986		LODGING SCORE(1-5)			YIELD (BU/ACRE)		
	MATU- RITY DATE	PLANT HEIGHT (IN)	1986	1985	1984	1986	1985	1984
S-BRAND S-64A	9-25	43.0	3.3	--	--	44.7	--	--
REEDS 330	9-24	36.3	3.0	1.0	1.0	44.7	47.5*	42.3
PRESTON	9-18	46.6	3.3	--	--	44.6	--	--
SRF 350P	9-27	48.6	3.6	2.3	1.3	44.6	42.1	39.6
HILL HS 3400	9-26	50.6	4.0	--	--	44.6	--	--
SILER SS-335	9-24	48.3	3.3	--	--	44.5	--	--
S-BRAND S-62	9-25	43.0	2.0	--	--	44.4	--	--
LYNKS SEED 8393	9-24	46.3	4.0	--	--	44.3	--	--
HOFLER CORAL	9-25	49.6	4.0	2.6	1.3	44.3	51.2*	41.4
REEDS 320	9-24	48.6	3.0	1.0	1.3	44.3	46.0	41.8
LEWIS 34	10- 1	50.3	3.6	1.3	1.0	44.1	43.8	42.3
FS HISOY BRAND HS 321	9-27	43.0	3.6	--	--	44.0	--	--
WINCHESTER	9-25	48.3	3.3	--	--	43.9	--	--
HARPER	9-24	43.3	2.0	1.0	1.0	43.8	48.8*	47.9**
AMERICANA RIVAL	9-27	44.0	4.0	2.0	1.6	43.7	45.1	42.1
PRAIRIE BRAND 373	9-27	53.0	4.0	--	--	43.5	--	--
MERSCHMAN KENNEDY	9-23	46.6	2.6	2.0	1.0	43.4	44.9	40.7
COKER 393	10- 1	49.6	3.3	1.3	--	43.4	44.6	--
WILLIAMS	10- 1	49.3	3.6	2.3	1.3	43.3	41.0	39.5
ASGROW A3966	10- 2	48.3	3.3	1.6	1.6	43.3	40.2	38.9
BRAD 40	9-25	51.6	3.3	--	--	42.9	--	--
NECO 1000	10- 1	44.3	3.3	2.0	1.6	42.9	44.6	43.2*
BRAD 39	9-28	43.0	4.6	1.6	--	42.8	47.1*	--
OHLDE 4331	9-28	49.3	4.0	1.6	--	42.5	46.2	--
MERSCHMAN EISENHOWER	10- 3	48.3	3.3	2.0	--	42.4	42.6	--
SRF 390	9-25	41.3	3.0	2.3	--	42.2	42.0	--
BRAD 34	9-25	45.6	3.3	1.3	--	42.2	44.1	--
FORTUNE 666	9-25	47.0	3.0	1.0	1.0	42.2	43.6	37.1
WILLIAMS 82	9-30	48.3	3.3	2.0	1.0	41.8	41.9	41.4
OHLDE 3380	9-24	45.6	3.0	1.3	1.0	41.8	49.0*	43.7*
AMERICANA SENTRY	9-30	40.3	4.3	2.3	--	41.5	44.6	--
RAY-CARROLL CARROLL	9-25	45.6	4.0	2.3	--	41.4	42.9	--
SRF MATSOY	9-24	49.3	4.0	3.6	1.6	41.0	42.4	38.5
LYNKS SEED 8380	9-28	43.3	4.0	--	--	40.2	--	--
SRF 307P	9-24	50.0	4.0	1.6	2.3	39.9	38.6	41.7
FONTANELLE 6540	10- 2	44.3	4.0	2.3	1.6	39.7	43.3	43.1*
SHISSLER GR8 388	9-27	46.0	4.0	2.0	1.3	37.5	44.6	36.7
MATURITY GROUP AVERAGE	9-27	46.3	3.3	1.7	1.4	46.0	45.6	41.5
MATURITY GROUP LSD AT .05		5.1	0.8	1.0		5.6	5.3	5.5
MATURITY GROUP 4								
NORTHROP KING S42-30	10- 1	43.1	2.3	1.0	--	54.9**	46.8*	--
MERSCHMAN HARRIS	10- 2	45.3	2.2	1.6	--	54.1*	46.4*	--
STINE 4740	10- 2	43.3	3.0	--	--	52.6*	--	--
NORTHROP KING S42-40	10- 1	47.2	3.0	2.6	1.3	51.1*	48.6*	45.1*
RIPLEY	9-27	27.2	1.0	1.0	--	51.0*	48.3*	--
S-BRAND S-67	9-28	45.0	2.3	--	--	49.7*	--	--
MERSCHMAN HOUSTON	10- 4	46.2	3.9	2.3	--	49.7*	49.4*	--
HOFLER JASPER	10- 6	58.5	3.9	--	--	49.3*	--	--
AGRIPRO AP 350	10- 2	55.4	3.8	2.0	2.3	48.7	40.9	38.8
PIXIE	10- 1	19.1	1.0	1.0	1.0	48.2	46.7*	44.1*
DEKALB-PFIZER CX415	10- 1	50.2	2.6	1.3	--	48.1	49.0*	--
DOUGLAS	10- 7	48.3	2.9	--	--	47.7	--	--
JMS 4383	10- 2	53.9	3.8	3.0	2.0	47.4	42.9	41.5
KELLER K-931	10- 6	56.2	3.5	--	--	47.3	--	--
AGRIPRO GT 1380	9-30	52.7	3.7	--	--	47.1	--	--
HILL HS 4150	10- 1	53.6	3.6	2.0	2.3	46.7	38.0	40.3
REEDS 390	9-27	39.9	2.6	2.0	--	46.6	44.0	--
MERSCHMAN MEMPHIS	10- 2	47.2	3.0	1.6	--	46.3	43.5	--
MERSCHMAN WILLIAMSBURG	10- 1	45.3	2.6	1.3	--	46.2	44.5	--
FORTUNE 747	9-26	50.5	2.9	1.0	--	44.6	42.8	--
TERRA COMPETITOR	10- 7	53.9	4.0	--	--	44.6	--	--
MERSCHMAN BOSTON	10- 2	49.9	3.5	2.3	2.3	44.5	45.6*	44.4*
SHISSLER GR8 420	10- 2	49.9	3.7	1.6	--	44.2	45.3	--
PIONEER 9441	10- 2	46.7	2.4	1.3	--	44.2	45.5	--
HOFLER QUARTZ	9-30	52.6	2.6	1.6	--	43.3	47.7*	--
MERSCHMAN DENVER II	10- 8	62.5	4.0	2.6	3.6	43.3	36.2	37.2
UNION	10- 2	58.8	3.5	1.6	2.0	43.1	39.3	40.5
NECO 1350	10- 8	60.3	3.9	2.3	3.6	43.0	44.0	38.3
MERSCHMAN DALLAS	10- 8	52.2	4.0	2.3	3.6	42.9	44.4	34.9
AGRIPRO AP 4321	10- 5	45.8	2.7	1.3	--	42.8	48.5*	--
REEDS 444	10- 8	56.8	4.3	2.0	4.0	42.8	44.7	34.1
SRF 425	10- 2	51.3	4.0	2.3	3.0	42.8	45.1	40.3
McCUBBIN ALBANY II	10- 2	54.9	2.9	2.0	2.3	42.7	49.4*	45.5*
MERSCHMAN ATLANTA	10- 3	52.2	3.9	2.0	2.6	41.1	43.8	40.5
REEDS 440	10- 5	42.3	4.3	1.0	1.0	37.5	45.1	40.6
SRF 450P	10- 7	56.1	2.9	1.3	3.0	37.1	36.6	32.0
MATURITY GROUP AVERAGE	10- 4	49.3	3.2	1.8	2.5	46.0	44.5	39.9
MATURITY GROUP LSD AT .05		6.6	0.8	0.8		5.7	4.4	4.3
TRIAL AVERAGE								
		46.9	3.2	1.7	1.7	45.5	45.6	40.7

-- DATA NOT AVAILABLE.

** HIGHEST YIELDING VARIETY IN THE MATURITY GROUP.

* YIELD NOT SIGNIFICANTLY LESS THAN THE HIGHEST YIELDING VARIETY IN THE SAME MATURITY GROUP.

TABLE 4. PERFORMANCE OF SOYBEAN VARIETIES EVALUATED NEAR LAREDO ON THE RANDY FOSTER FARM IN 1986 AND NEAR SPICKARD ON THE NORTH MISSOURI CENTER DURING 1984-85. PLANTED: 27 MAY 1986. HARVESTED: 29 OCTOBER 1986. PLANTING RATE: 9 SEEDS/FT.

BRAND-VARIETY	1986			LODGING SCORE(1-5)			YIELD (BU/ACRE)		
	MATU- RITY DATE	PLANT HEIGHT (IN)	1986	1985	1984	1986	1985	1984	
MATURITY GROUP 2									
FONTANELLE 5708	9-21	36.3	2.6	1.5	1.0	46.5**	47.0	11.9	
HOFLER SUNSTONE	9-17	35.3	2.3	--	--	44.2*	--	--	
BRAD 29	9-13	35.0	2.6	--	--	42.0*	--	--	
MERSCHMAN CHEYENNE III	9-14	35.6	2.3	--	--	41.7*	--	--	
RANDELL MAHASKA	9-12	39.0	2.3	1.5	1.0	39.1*	50.9	19.0**	
FONTANELLE 6161	9-16	34.0	2.6	1.5	1.0	38.2	49.5	13.8	
PIONEER 9292	9-11	34.3	2.3	--	--	38.0	--	--	
RHS 6592	9-13	36.6	2.3	--	--	37.7	--	--	
McCUBBIN TAYLOR	9-12	34.3	3.3	1.0	1.0	37.0	49.9	13.1	
S-BRAND S-48c	9-12	32.3	3.0	2.0	--	35.2	50.2	--	
DIAMOND BRAND TC204A	9- 9	31.3	3.0	--	--	34.9	--	--	
CENTURY 84	9- 9	30.0	2.3	--	--	33.7	--	--	
SRF 250	9-12	34.6	2.0	1.0	--	32.6	44.4	--	
RAY-CARROLL NORBORNE	9-10	33.3	3.3	--	--	32.3	--	--	
AMERICANA MARINER	9-11	36.6	3.0	2.0	1.0	31.4	44.8	16.8	
KELLER KNOX	9-14	29.6	3.6	1.0	1.0	31.3	47.3	13.5	
LEWIS 266	9-11	33.0	2.0	--	--	30.9	--	--	
REEDS 222	9-11	32.6	3.3	1.5	1.0	28.0	51.1	13.7	
MASCO 8341	9- 9	34.0	3.0	1.5	1.0	26.8	46.4	13.9	
HOFLER GEM	9- 9	32.3	4.0	2.5	1.0	23.1	46.7	14.1	
MATURITY GROUP AVERAGE	9-12	34.0	2.8	1.6	1.0	35.3	47.1	14.7	
MATURITY GROUP LSD AT .05		5.9	1.2	NS		7.7	NS	NS	
MATURITY GROUP 3									
ASGROW A3803	9-25	34.3	1.9	1.0	--	50.7**	49.6*	--	
ASGROW A3733	9-25	35.0	1.3	--	--	50.6**	--	--	
PIONEER 9361	9-23	38.1	2.3	--	--	48.4*	--	--	
AMERICANA TAURUS	9-24	40.6	2.3	--	--	47.7*	--	--	
S-BRAND S-64A	9-20	31.1	1.6	--	--	47.6*	--	--	
STINE 3790	9-24	38.7	1.9	--	--	46.8*	--	--	
RANDELL RR 3040	9-18	38.0	1.9	--	--	46.3*	--	--	
SILER SS-335	9-24	38.6	2.2	--	--	46.1*	--	--	
PRIZE 623	9-23	32.2	1.1	--	--	46.1*	--	--	
MERSCHMAN WASHINGTON VI	9-23	39.0	2.3	--	--	45.5*	--	--	
MASCO 8604	9-20	36.8	1.7	--	--	45.2*	--	--	
PRAIRIE BRAND 373	9-25	46.9	3.0	--	--	44.9*	--	--	
KELLER K-924	9-16	38.1	2.3	--	--	44.7*	--	--	
ASGROW A3427	9-24	35.9	1.9	1.0	--	44.7*	51.3*	--	
NORTHROP KING S39-99	9-24	37.1	1.6	1.0	--	44.7*	46.8	--	
DEKALB-PFIZER CX366	9-22	40.3	2.2	--	--	44.5*	--	--	
DIAMOND BRAND D315	9-20	41.4	2.6	2.0	--	44.4*	45.4	--	
MERSCHMAN JEFFERSON V	9-24	39.0	2.0	--	--	44.4*	--	--	
AMERICANA ATLANTIS	9-22	36.9	2.7	--	--	44.3*	--	--	
STINE 3500	9-18	36.0	1.7	--	1.0	43.9*	--	14.0	
WILSON BLEND 3182	9-16	34.1	1.6	--	--	43.8*	--	--	
WINCHESTER	9-24	41.6	2.7	--	--	43.4	--	--	
MERSCHMAN MONROE	9-23	39.0	3.0	2.0	--	43.3	48.0	--	
CFS 32	9-24	39.3	2.8	--	--	43.2	--	--	
S-BRAND S-58A	9-20	36.2	1.8	1.5	1.0	42.8	48.0	12.4	
FONTANELLE 6464	9-26	41.0	3.1	2.5	1.0	42.7	50.7*	17.2*	
RANDELL RR 3030	9-18	36.5	2.3	--	--	42.6	--	--	
S-BRAND S-60H	9-23	35.4	1.4	1.0	--	42.5	47.7	--	
LEWIS 300	9-20	36.2	1.6	--	--	42.4	--	--	
PRAIRIE BRAND GALAXY	9-22	36.1	2.4	--	--	42.4	--	--	
PRIZE 622	9-25	35.9	2.4	--	--	42.3	--	--	
RANDELL HAWK	9-23	35.3	1.3	1.0	--	42.2	45.4	--	
FS HISOY BRAND HS 302	9-18	35.8	1.9	--	--	42.0	--	--	
HIDY BINBUSTER 4250	9-15	36.3	1.4	1.0	--	42.0	49.6*	--	
WILLIAMS	9-26	41.4	2.6	2.0	1.0	41.8	43.1	19.1*	
MERSCHMAN JEFFERSON IV	9-22	38.0	2.3	1.5	--	41.7	43.5	--	
S-BRAND S-62	9-20	36.6	1.6	--	--	41.6	--	--	
MERSCHMAN TRUMAN II	9-24	37.6	2.3	2.0	1.0	41.6	53.0*	16.2	
PELLA 86	9-16	36.0	1.9	2.0	--	41.5	49.8*	--	
ASGROW A3966	9-27	44.8	3.0	2.5	1.0	41.4	45.2	20.0*	
SHISSLER GR8 388	9-22	37.6	2.7	1.5	1.0	41.3	47.1	16.4	
FS HISOY BRAND HS 348	9-25	38.4	2.0	1.0	--	41.3	51.7*	--	
HOFLER CRYSTAL	9-24	39.3	2.7	1.0	--	41.1	47.1	--	
HARPER	9-20	36.4	1.0	1.0	1.0	40.7	47.6	16.2	
PELLA	9-18	33.4	1.6	1.0	1.0	40.7	46.6	17.4*	
NECO 1000	9-25	38.7	4.0	1.5	1.0	40.5	47.8	18.3*	
AGRIPRO AP 3773	9-23	39.2	2.3	--	--	40.4	--	--	
SILER SS-325	9-24	40.7	5.0	2.0	--	40.4	51.0*	--	
JMS 3482	9-22	39.4	2.3	2.5	1.0	40.2	45.8	17.4*	
DIAMOND BRAND D320B	9-20	35.3	1.3	1.5	--	40.2	43.4	--	
MASCO DYNAMO II	9-23	38.9	3.6	1.5	1.0	40.1	50.5*	16.3	
BRAD 34	9-25	36.4	2.1	1.5	--	40.1	50.8*	--	
TERRA TRIUMPH	9-23	38.0	3.2	--	--	40.1	--	--	
COKER 393	9-23	40.7	2.5	1.0	--	40.0	48.6	--	
MERSCHMAN KENNEDY II	9-23	39.1	1.8	1.5	--	39.9	41.6	--	
TERRA ADVANCE	9-16	30.2	1.5	--	--	39.9	--	--	
MERSCHMAN JEFFERSON III	9-19	39.1	1.9	--	1.0	39.8	--	13.2	
REEDS 330	9-17	26.1	1.0	1.5	1.0	39.7	46.2	16.0	
HILL HS 3400	9-24	37.6	3.3	--	--	39.6	--	--	
OHLDE 3380	9-23	35.7	2.0	1.5	1.0	39.5	49.5*	17.6*	
OHLDE 4386	10- 3	51.8	3.7	2.3	1.0	39.5	44.6	15.9	
MERSCHMAN EISENHOWER	9-26	39.7	3.0	2.0	--	39.4	45.0	--	
SHERMAN	9-23	35.0	2.3	1.0	--	39.3	53.7*	--	

TABLE 4. CONTINUED.

BRAND-VARIETY	1986		LODGING			YIELD		
	MATU- RITY DATE	PLANT HEIGHT (IN)	SCORE(1-5)			(BU/ACRE)		
			1986	1985	1984	1986	1985	1984
CFS 37	9-26	37.1	3.1	--	--	39.2	--	--
FS HISOY BRAND HS 321	9-22	35.8	2.6	--	--	39.2	--	--
WILLIAMS 82	9-25	39.0	2.9	1.5	1.0	38.9	45.2	17.1*
FUNK G3399	9-25	39.2	2.2	1.0	--	38.9	50.8*	--
FORTUNE 666	9-24	38.5	2.7	1.5	1.0	38.9	45.2	14.8
MASCO 8493	9-25	36.6	3.5	2.5	1.0	38.8	50.3*	17.6*
REEDS 333	9-18	35.7	2.1	1.5	1.0	38.8	53.6*	16.3
AMERICANA RIVAL	9-23	38.4	4.2	1.5	1.0	38.7	48.7	16.3
ZANE	9-18	34.3	2.0	2.0	1.0	38.2	47.4	13.8
MERSCHMAN KENNEDY	9-22	32.8	2.2	1.5	1.0	38.1	49.3*	18.7*
RAY-CARROLL CARROLL	9-24	39.5	3.9	1.5	--	38.0	52.0*	--
BRAD 39	9-25	41.3	3.9	1.5	--	37.9	50.1*	--
NECO 950	9-21	37.6	1.6	1.5	--	37.9	47.9	--
LYNKS SEED 8393	9-21	37.9	3.0	--	--	37.8	--	--
BRAD 40	9-22	39.0	2.9	--	--	37.8	--	--
JMS 3186	9-16	36.6	2.0	--	--	37.6	--	--
SRF 350P	9-25	41.8	4.2	2.0	1.0	37.6	42.8	14.6
McCUBBIN TROY	9-17	33.5	2.9	1.5	1.0	37.5	51.2*	18.3*
FONTANELLE 6540	9-25	41.4	3.3	2.5	1.0	37.0	48.9	16.7
CHAMBERLAND	9-23	40.0	2.9	--	--	36.9	--	--
WILSON BLEND 3560	9-21	38.5	3.6	2.5	--	36.8	51.1*	--
SRF 307P	9-22	42.0	3.7	2.0	1.0	36.6	40.3	16.2
LYNKS SEED 8380	9-23	39.4	3.6	--	--	36.5	--	--
PRESTON	9-14	36.3	3.2	--	--	36.4	--	--
LEWIS 34	9-24	36.2	2.0	2.0	1.0	36.4	49.4*	14.6
FAYETTE	9-25	40.4	2.6	3.0	1.0	36.2	42.7	19.6*
OHLDE 4331	9-25	43.5	3.5	1.7	--	35.7	48.9	--
HOFLEER CORAL	9-21	36.5	2.7	1.5	1.0	35.5	50.4*	13.6
DIAMOND BRAND D280B	9-12	36.4	3.3	--	--	35.5	--	--
HIDY BINBUSTER 3802	9-25	40.6	4.3	2.0	--	35.5	49.0	--
DIAMOND BRAND D245	9-14	36.7	2.6	--	--	35.3	--	--
SRF 390	9-22	36.1	2.9	1.0	--	34.9	42.6	--
SRF MATSOY	9-19	37.2	3.6	3.0	1.0	34.9	46.6	14.2
REEDS 320	9-22	37.2	1.0	1.5	1.0	33.9	48.7	18.6*
RING AROUND RA303	9-18	35.7	3.9	1.0	1.0	32.0	45.7	14.5
AMERICANA SENTRY	9-25	42.1	4.4	1.5	--	31.0	49.8*	--
HOBBIT	9-16	18.4	1.0	1.0	1.0	27.9	49.8*	15.0
MATURITY GROUP AVERAGE	9-22	37.7	2.5	1.6	1.0	40.4	47.9	15.8
MATURITY GROUP LSD AT .05		5.0	1.0	NS		6.9	7.0	4.5
MATURITY GROUP 4								
NORTHRUP KING S42-30	9-27	37.1	2.0	1.0	--	47.2**	47.9*	--
S-BRAND S-67	9-25	38.0	2.6	--	--	47.0*	--	--
DEKALB-PFIZER CX415	9-25	44.9	2.7	1.0	--	45.5*	49.0*	--
NORTHRUP KING S42-40	9-27	37.7	2.6	1.0	1.0	45.0*	45.7	18.9*
MERSCHMAN HARRIS	9-26	38.7	2.8	2.0	--	44.9*	47.0	--
DOUGLAS	10- 1	39.9	2.8	--	--	44.8*	--	--
KELLER K-931	9-29	43.5	3.9	--	--	43.4*	--	--
MERSCHMAN MEMPHIS	9-27	40.8	3.6	2.3	--	42.8*	43.8	--
McCUBBIN ALBANY II	9-27	41.5	3.0	1.6	1.0	41.4*	42.8	17.9*
STINE 4740	9-27	37.7	2.9	--	--	41.4*	--	--
MERSCHMAN HOUSTON	9-29	37.6	3.9	2.0	--	40.9	45.6	--
FORTUNE 747	9-21	36.1	2.1	1.3	--	40.6	45.1	--
TERRA COMPETITOR	10- 3	51.4	3.7	--	--	40.6	--	--
MERSCHMAN DALLAS	10- 3	48.4	4.4	2.4	1.0	40.5	42.8	17.1
AGRIPRO AP 4321	9-29	35.8	2.2	1.3	--	40.2	45.0	--
HOFLEER JASPER	10- 1	42.1	2.9	--	--	39.7	--	--
NECO 1350	10- 4	46.9	3.0	2.4	1.0	39.2	42.7	15.0
MERSCHMAN ATLANTA	9-28	43.3	4.5	1.2	1.0	39.0	43.3	18.8*
PIONEER 9441	9-27	43.1	2.4	1.3	--	38.9	45.6	--
MERSCHMAN WILLIAMSBURG	9-25	41.7	3.2	1.6	--	38.8	45.4	--
AGRIPRO GT 1380	9-25	38.2	3.3	--	--	38.6	--	--
SHISSLER GR8 420	9-27	43.8	3.6	1.7	--	38.6	44.2	--
REEDS 444	10- 1	48.4	3.3	2.1	1.0	38.6	47.3	19.1*
MERSCHMAN DENVER II	10- 2	42.6	4.1	1.7	1.0	38.5	44.0	18.4*
MERSCHMAN BOSTON	9-27	37.9	4.6	1.8	1.0	37.9	45.8	21.0*
UNION	9-27	46.9	3.7	1.4	1.0	37.5	42.0	19.7*
REEDS 390	9-23	33.6	2.8	1.5	--	37.5	46.9	--
HILL HS 4150	9-25	40.1	3.8	1.5	1.0	37.5	45.4	13.7
JMS 4383	9-27	46.1	4.7	1.7	1.0	36.8	46.5	14.6
REEDS 440	9-30	41.2	3.5	1.2	1.0	36.4	47.8	14.9
SRF 425	9-27	44.4	4.7	1.9	1.0	35.8	42.0	17.7
HOFLEER QUARTZ	9-25	37.5	3.3	1.4	--	35.1	54.5**	--
AGRIPRO AP 350	9-25	44.1	4.7	1.9	1.0	34.2	44.2	22.3**
PIXIE	9-27	18.4	0.8	1.1	1.0	33.3	50.4*	16.7
RIPLEY	9-25	21.6	0.9	2.5	--	30.7	45.9	--
SRF 450P	10- 1	44.8	4.3	1.6	1.0	26.7	40.1	11.7
MATURITY GROUP AVERAGE	9-27	40.5	3.3	1.7	1.0	39.3	45.3	16.7
MATURITY GROUP LSD AT .05		4.7	1.0	1.0		6.1	6.6	4.5
TRIAL AVERAGE								
		37.8	2.7	1.6	1.0	39.5	47.0	15.9

-- DATA NOT AVAILABLE.

** HIGHEST YIELDING VARIETY IN THE MATURITY GROUP.

* YIELD NOT SIGNIFICANTLY LESS THAN THE HIGHEST YIELDING VARIETY IN THE SAME MATURITY GROUP.

NS NOT SIGNIFICANT.

TABLE 5. PERFORMANCE OF SOYBEAN VARIETIES EVALUATED NEAR NOVELTY ON THE GREENLEY MEMORIAL CENTER DURING 1984-86. PLANTED: 2 JUNE 1986. HARVESTED: 10,12 NOVEMBER 1986. PLANTING RATE: 9 SEEDS/FT.

BRAND-VARIETY	1986			LODGING SCORE(1-5)			YIELD (BU/ACRE)		
	MATU- RITY DATE	PLANT HEIGHT (IN)		1986	1985	1984	1986	1985	1984
MATURITY GROUP 2									
HOFLER GEM	9- 9	40.0	1.6	3.3	1.0		40.2**	30.7*	24.3
AMERICANA MARINER	9- 9	38.0	1.6	3.0	1.0		39.6*	22.7	20.2
MASCO 8341	9- 7	40.6	1.6	2.0	1.0		39.4*	25.6	21.0
KELLER KNOX	9- 9	40.6	1.6	2.6	1.0		39.4*	27.3	20.9
S-BRAND S-48c	9-10	42.0	1.3	2.3	--		39.2*	36.3**	--
CENTURY 84	9- 5	37.3	1.0	--	--		38.8*	--	--
BRAD 29	9- 9	44.0	1.3	--	--		38.1*	--	--
RAY-CARROLL NORBORNE	9- 9	38.0	1.6	--	--		37.7*	--	--
REEDS 222	9-10	40.6	1.6	2.3	1.0		37.5*	27.3	24.3
DIAMOND BRAND TC204A	9- 9	37.3	1.3	--	--		37.1*	--	--
MERSCHMAN CHEYENNE III	9-11	41.3	1.0	--	--		36.5	--	--
McCUBBIN TAYLOR	9- 7	41.3	1.6	1.6	1.0		36.0	26.8	25.9**
PIONEER 9292	9-10	36.6	1.0	--	--		36.0	--	--
HOFLER SUNSTONE	9-11	42.0	1.0	--	--		35.9	--	--
RHS 6592	9-10	42.0	1.0	--	--		35.2	--	--
FONTANELLE 6161	9-11	35.3	1.3	2.0	1.0		34.7	33.2*	20.7
SRF 250	9-11	37.3	1.3	1.3	--		33.6	33.9*	--
LEWIS 266	9- 9	40.6	2.0	--	--		32.8	--	--
RANDELL MAHASKA	9-10	42.0	1.0	2.0	1.0		31.6	25.3	22.6
FONTANELLE 5708	9-10	38.6	1.0	2.0	1.0		31.5	36.0*	20.6
MATURITY GROUP AVERAGE	9-10	39.8	1.4	2.4	1.0		36.5	29.1	21.9
MATURITY GROUP LSD AT .05		4.7	0.9	0.7			3.6	6.5	NS
MATURITY GROUP 3									
RANDELL RR 3030	9-17	36.3	1.2	--	--		42.3**	--	--
SILER SS-335	9-19	39.7	1.0	--	--		40.3*	--	--
S-BRAND S-62	9-17	39.7	1.0	--	--		39.5*	--	--
LEWIS 300	9-15	41.8	1.0	--	--		39.2*	--	--
ASGROW A3733	9-20	34.3	1.0	--	--		38.9*	--	--
RING AROUND RA303	9-11	42.3	2.4	2.6	1.0		38.9*	33.4	18.9*
JMS 3186	9-12	43.2	1.2	--	--		38.8*	--	--
HIDY BINBUSTER 3802	9-17	39.2	1.0	1.7	--		38.1*	39.4	--
REEDS 333	9-12	38.1	1.7	1.9	1.0		37.7*	30.1	18.0
PRIZE 623	9-15	38.6	1.2	--	--		37.7*	--	--
REEDS 330	9-19	36.4	2.1	1.0	1.0		37.4*	33.4	16.1
KELLER K-924	9-14	41.3	1.4	--	--		37.4*	--	--
DIAMOND BRAND D245	9-12	46.5	2.5	--	--		37.2*	--	--
DIAMOND BRAND D320B	9-13	40.1	1.1	1.6	--		37.1*	34.4	--
MERSCHMAN WASHINGTON VI	9-17	39.0	1.0	--	--		37.0*	--	--
PRIZE 622	9-17	39.4	1.3	--	--		36.9*	--	--
PELLA 86	9- 9	40.1	1.0	2.7	--		36.8*	40.4	--
TERRA ADVANCE	9-14	43.4	1.2	--	--		36.8*	--	--
SHERMAN	9-16	38.6	1.4	1.1	--		36.7*	34.5	--
DIAMOND BRAND D315	9-14	38.5	1.5	2.2	--		36.7*	33.8	--
S-BRAND S-60H	9-17	39.2	1.3	1.3	--		36.5*	42.0*	--
AMERICANA ATLANTIS	9-11	39.4	1.0	--	--		36.4*	--	--
ASGROW A3427	9-17	36.0	1.0	1.9	--		36.1*	32.8	--
DIAMOND BRAND D280B	9-10	38.5	2.5	--	--		36.0*	--	--
RANDELL RR 3040	9-13	41.3	1.1	--	--		36.0*	--	--
HOBBIT	9-14	22.6	1.0	1.0	1.0		35.5	27.2	17.4
FS HISOY BRAND HS 321	9-18	37.3	1.3	--	--		35.5	--	--
FUNK G3399	9-18	46.3	2.3	1.9	--		35.4	39.5	--
FAYETTE	9-20	45.1	2.1	2.3	1.0		35.3	39.5	21.0*
PRESTON	9- 9	40.6	1.4	--	--		35.2	--	--
SHISSLER GR8 388	9-17	40.1	1.7	2.3	1.0		35.2	48.3**	18.9*
STINE 3790	9-17	40.0	1.2	--	--		35.1	--	--
MERSCHMAN KENNEDY	9-13	40.4	1.8	1.6	1.0		35.0	36.7	18.0
PIONEER 9361	9-13	37.9	1.4	--	--		35.0	--	--
S-BRAND S-64A	9-13	39.3	1.3	--	--		34.9	--	--
FS HISOY BRAND HS 302	9-15	35.9	1.0	--	--		34.9	--	--
LYNKS SEED 8380	9-16	38.9	1.7	--	--		34.7	--	--
NORTHUP KING S39-99	9-17	41.4	1.0	2.2	--		34.7	42.9*	--
DEKALB-PFIZER CX366	9-17	40.5	1.1	--	--		34.6	--	--
FONTANELLE 6540	9-19	42.6	1.4	2.3	1.0		34.4	37.4	16.1
OHLDE 4386	9-25	41.9	1.6	3.9	1.0		34.3	35.1	21.2*
TERRA TRIUMPH	9-17	42.5	1.4	--	--		34.3	--	--
COKER 393	9-18	40.1	1.4	2.0	--		34.2	43.2*	--
AMERICANA RIVAL	9-17	40.7	1.7	3.0	1.0		34.1	40.6	16.4
SRF MATSOY	9-16	44.8	2.4	3.0	1.0		33.8	35.1	21.9*
MASCO 8604	9-14	42.3	1.5	--	--		33.6	--	--
ASGROW A3803	9-19	36.7	1.3	1.0	--		33.5	39.5	--
NECO 1000	9-18	39.8	1.5	3.2	1.0		33.5	45.0*	19.8*
HARPER	9-14	39.5	1.1	1.0	1.0		33.4	35.5	16.5
BRAD 39	9-18	39.4	1.4	2.6	--		33.0	41.5*	--
CFS 32	9-13	37.8	1.3	--	--		33.0	--	--
PELLA	9-12	40.5	1.1	2.0	1.0		32.9	31.3	19.2*
WILSON BLEND 3560	9-15	41.8	2.1	2.6	--		32.9	37.8	--
WILSON BLEND 3182	9-13	39.3	1.3	--	--		32.9	--	--
RANDELL HAWK	9-12	37.2	1.0	3.0	--		32.8	35.9	--
NECO 950	9-14	44.6	1.5	1.3	--		32.6	29.5	--
CHAMBERLAND	9-18	42.6	2.1	--	--		32.4	--	--
STINE 3500	9-15	39.8	1.0	--	1.0		32.4	--	15.6
MERSCHMAN JEFFERSON III	9-13	38.0	1.0	--	1.0		32.4	--	17.8
MERSCHMAN JEFFERSON IV	9-13	38.5	1.4	2.3	--		32.3	36.2	--
MERSCHMAN EISENHOWER	9-19	41.3	2.0	2.2	--		32.2	37.6	--
FORTUNE 666	9-15	43.5	1.9	2.3	1.0		31.7	29.3	13.9

TABLE 5. CONTINUED.

BRAND-VARIETY	1986			LODGING SCORE(1-5)			YIELD (BU/ACRE)		
	MATU- RITY DATE	PLANT HEIGHT (IN)	1986	1985	1984	1986	1985	1984	
HIDY BINBUSTER 4250	9-15	40.7	1.3	2.7	--	31.5	40.4	--	
JMS 3482	9-14	39.3	1.0	2.6	1.0	31.4	41.0	15.2	
OHLDE 4331	9-19	43.5	1.7	2.6	--	31.4	43.4*	--	
LEWIS 34	9-17	44.5	1.8	2.9	1.0	31.3	38.2	19.6*	
MERSCHMAN KENNEDY II	9-13	39.0	1.1	1.0	--	31.3	32.6	--	
McCUBBIN TROY	9-12	39.7	1.7	2.0	1.0	31.2	31.9	22.8*	
MERSCHMAN JEFFERSON V	9-14	37.4	1.0	--	--	31.0	--	--	
MERSCHMAN MONROE	9-14	43.5	1.6	2.6	--	31.0	37.1	--	
PRAIRIE BRAND GALAXY	9-12	36.8	1.6	--	--	31.0	--	--	
ZANE	9-13	39.0	1.3	1.3	1.0	30.9	28.7	16.5	
S-BRAND S-58A	9-11	37.3	1.1	1.6	1.3	30.8	33.2	11.6	
MERSCHMAN TRUMAN II	9-13	41.4	1.7	2.0	1.0	30.8	40.0	17.5	
MASCO 8493	9-17	42.6	2.2	2.6	1.0	30.6	39.0	16.6	
MASCO DYNAMO II	9-13	39.4	1.2	2.2	1.0	30.6	37.5	14.6	
BRAD 40	9-18	44.2	1.1	--	--	30.4	--	--	
OHLDE 3380	9-14	42.4	1.4	1.3	1.0	30.4	30.9	17.8	
SILER SS-325	9-17	41.5	2.3	2.1	--	30.3	36.2	--	
RAY-CARROLL CARROLL	9-14	38.5	2.5	2.3	--	30.2	37.7	--	
SRF 307P	9-14	42.8	2.7	3.3	1.0	30.0	30.2	17.7	
AMERICANA TAURUS	9-16	45.8	1.0	--	--	29.9	--	--	
FS HISOY BRAND HS 348	9-18	41.3	1.5	2.3	--	29.6	39.7	--	
LYNKS SEED 8393	9-15	42.2	1.7	--	--	29.4	--	--	
AMERICANA SENTRY	9-16	35.4	1.7	1.9	--	28.9	38.6	--	
WINCHESTER	9-15	39.9	1.7	--	--	28.3	--	--	
HOFER CORAL	9-15	42.6	2.5	2.3	1.0	28.2	43.5*	14.8	
AGRIPRO AP 3773	9-15	39.9	1.2	--	--	28.2	--	--	
HOFER CRYSTAL	9-12	38.5	1.6	2.6	--	27.7	39.5	--	
CFS 37	9-15	38.8	1.5	--	--	27.6	--	--	
WILLIAMS 82	9-17	41.8	1.4	2.3	1.0	27.4	39.1	17.0	
SRF 350P	9-17	43.3	1.5	2.6	1.0	27.4	32.8	20.4*	
BRAD 34	9-13	42.8	1.8	1.3	--	27.4	31.2	--	
PRAIRIE BRAND 373	9-18	42.9	1.6	--	--	27.2	--	--	
HILL HS 3400	9-19	40.7	1.3	--	--	27.2	--	--	
REEDS 320	9-14	44.0	2.2	1.9	1.0	27.1	34.2	19.1*	
SRF 390	9-15	36.1	1.5	2.3	--	26.9	40.4	--	
ASGROW A3966	9-21	43.2	1.8	2.3	1.0	26.9	41.7*	20.3*	
WILLIAMS	9-20	43.5	1.1	1.9	1.0	26.8	35.5	16.0	
FONTANELLE 6464	9-19	44.9	2.7	2.2	1.0	26.7	45.9*	14.1	
MATURITY GROUP AVERAGE	9-16	40.4	1.5	2.1	1.0	33.1	36.3	17.6	
MATURITY GROUP LSD AT .05		4.6	0.9	0.7		6.3	7.2	4.4	
MATURITY GROUP 4									
NECO 1350	9-27	53.3	3.0	3.6	1.0	39.6**	36.4	18.8	
AGRIPRO AP 4321	9-21	38.1	1.0	2.1	--	36.2*	39.0*	--	
TERRA COMPETITOR	9-28	51.6	2.6	--	--	35.7*	--	--	
REEDS 444	9-23	52.0	2.6	3.9	1.0	34.9	35.4	19.7	
NORTHROP KING S42-30	9-21	38.8	1.0	1.3	--	34.7	42.9*	--	
MERSCHMAN DENVER II	9-24	50.4	2.0	3.3	1.0	34.5	34.6	16.0	
MERSCHMAN DALLAS	9-28	51.1	2.9	3.1	1.0	34.1	38.3*	21.1*	
MERSCHMAN HARRIS	9-19	42.1	1.3	2.3	--	33.9	39.5*	--	
PIXIE	9-25	23.1	1.0	1.0	1.0	33.8	27.8	16.4	
FORTUNE 747	9-16	44.8	1.0	1.6	--	32.8	34.2	--	
S-BRAND S-67	9-20	39.1	1.0	--	--	32.4	--	--	
HOFER JASPER	9-25	47.2	2.3	--	--	32.3	--	--	
STINE 4740	9-21	44.3	1.5	--	--	32.0	--	--	
MERSCHMAN HOUSTON	9-21	44.1	1.9	2.7	--	31.5	37.0	--	
DOUGLAS	9-24	43.0	1.3	--	--	31.3	--	--	
REEDS 440	9-23	38.0	1.6	1.6	1.0	31.0	38.2*	14.3	
MERSCHMAN MEMPHIS	9-20	43.1	1.2	2.4	--	30.8	41.6*	--	
DEKALB-PFIZER CX415	9-18	42.6	1.0	2.0	--	30.2	39.7*	--	
NORTHROP KING S42-40	9-21	41.3	1.0	2.3	1.0	29.9	40.9*	20.5*	
AGRIPRO GT 1380	9-20	44.9	2.2	--	--	29.3	--	--	
RIPLEY	9-20	24.7	1.1	1.0	--	28.9	33.7	--	
PIONEER 9441	9-20	40.2	1.0	1.1	--	28.9	45.4**	--	
UNION	9-21	51.5	2.4	2.4	1.0	28.6	30.0	19.0	
KELLER K-931	9-22	44.8	2.0	--	--	28.5	--	--	
McCUBBIN ALBANY II	9-21	47.0	1.9	3.0	1.0	28.3	38.7*	16.3	
HOFER QUARTZ	9-18	44.5	1.0	2.0	--	28.1	42.2*	--	
SRF 450P	9-23	46.3	1.6	2.6	1.0	28.1	33.1	15.6	
MERSCHMAN BOSTON	9-21	44.3	2.3	3.0	1.0	27.8	36.3	14.6	
AGRIPRO AP 350	9-16	50.9	3.2	2.7	1.0	27.7	35.7	18.5	
MERSCHMAN WILLIAMSBURG	9-18	41.0	1.0	1.7	--	26.9	35.9	--	
HILL HS 4150	9-18	49.1	2.3	2.2	1.0	25.4	38.0*	15.5	
JMS 4383	9-21	47.1	1.9	3.0	1.0	25.1	32.2	16.4	
REEDS 390	9-18	35.4	1.0	2.3	--	24.9	36.6	--	
SRF 425	9-22	45.7	1.8	2.6	1.3	24.9	34.2	15.5	
MERSCHMAN ATLANTA	9-20	42.1	1.6	3.0	1.0	24.8	37.2*	13.7	
SHISSLER GR8 420	9-19	43.8	1.6	2.6	--	23.3	43.2*	--	
MATURITY GROUP AVERAGE	9-21	43.7	1.7	2.6	1.0	30.3	36.2	16.9	
MATURITY GROUP LSD AT .05		3.7	0.6	2.4		4.3	8.2	4.0	
TRIAL AVERAGE									
		41.0	1.5	2.2	1.0	32.9	35.5	17.8	

-- DATA NOT AVAILABLE.

** HIGHEST YIELDING VARIETY IN THE MATURITY GROUP.

* YIELD NOT SIGNIFICANTLY LESS THAN THE HIGHEST YIELDING VARIETY IN THE SAME MATURITY GROUP.

NS NOT SIGNIFICANT.

TABLE 6. PERFORMANCE OF SOYBEAN VARIETIES EVALUATED AT THREE NORTHERN MISSOURI LOCATIONS (BARNARD, LAREDO AND NOVELTY) DURING 1986.
PLANTING RATE: 9 SEEDS/FT.

BRAND-VARIETY	LODGING SCORE(1-5)				YIELD (BU/ACRE)			
	BARNARD	LAREDO	NOVELTY	MEAN	BARNARD	LAREDO	NOVELTY	MEAN
MATURITY GROUP 2								
BRAD 29	3.0	2.6	1.3	2.3	44.3*	42.0*	38.1*	41.4**
MERSCHMAN CHEYENNE III	2.6	2.3	1.0	1.9	45.8*	41.7*	36.5	41.3*
HOFLEER SUNSTONE	3.3	2.3	1.0	2.2	42.6*	44.2*	35.9	40.9*
S-BRAND S-48c	3.0	3.0	1.3	2.4	45.9*	35.2	39.2*	40.1*
AMERICANA MARINER	3.0	3.0	1.6	2.5	49.0**	31.4	39.6*	40.0*
FONTANELLE 5708	4.0	2.6	1.0	2.5	41.4	46.5**	31.5	39.8*
FONTANELLE 6161	2.6	2.6	1.3	2.1	43.0*	38.2	34.7	38.6*
PIONEER 9292	2.6	2.3	1.0	1.9	41.0	38.0	36.0	38.3*
CENTURY 84	2.6	2.3	1.0	1.9	42.2	33.7	38.8*	38.2*
McCUBBIN TAYLOR	3.6	3.3	1.6	2.8	41.8	37.0	36.0	38.2*
RANDELL MAHASKA	3.0	2.3	1.0	2.1	43.7*	39.1*	31.6	38.1*
RHS 6592	2.3	2.3	1.0	1.8	40.7	37.7	35.2	37.8*
KELLER KNOX	3.6	3.6	1.6	2.9	42.3	31.3	39.4*	37.6*
DIAMOND BRAND TC204A	4.0	3.0	1.3	2.7	40.2	34.9	37.1*	37.4
MASCO 8341	3.6	3.0	1.6	2.7	45.1*	26.8	39.4*	37.1
RAY-CARROLL NORBORNE	3.6	3.3	1.6	2.8	37.8	32.3	37.7	35.9
REEDS 222	3.6	3.3	1.6	2.8	40.6	28.0	37.5*	35.3
LEWIS 266	2.3	2.0	2.0	2.1	41.0	30.9	32.8	34.9
HOFLEER GEM	4.3	4.0	1.6	3.3	40.2	23.1	40.2**	34.5
SRF 250	3.3	2.0	1.3	2.2	34.2	32.6	33.6	33.4
MATURITY GROUP AVERAGE	3.2	2.8	1.4	2.5	42.1	35.3	36.5	38.0
MATURITY GROUP LSD AT .05	0.8	1.2	0.9	0.5	6.4	7.7	3.6	3.8
MATURITY GROUP 3								
ASGROW A3733	1.6	1.3	1.0	1.3	52.1*	50.6*	38.9*	47.2**
STINE 3790	3.0	1.9	1.2	2.0	55.5**	46.8*	35.1	45.8*
MERSCHMAN WASHINGTON VI	2.3	2.3	1.0	1.8	50.7*	45.5*	37.0*	44.4*
ASGROW A3803	2.3	1.9	1.3	1.8	48.9	50.7**	33.5	44.3*
RANDELL RR 3040	3.0	1.9	1.1	2.0	49.9*	46.3*	36.0*	44.0*
PRIZE 622	2.3	2.4	1.3	2.0	52.6*	42.3	36.9*	43.9*
PIONEER 9361	3.0	2.3	1.4	2.2	47.8	48.4*	35.0	43.7*
SILER SS-335	3.3	2.2	1.0	2.1	44.5	46.1*	40.3*	43.6*
RANDELL RR 3030	4.0	2.3	1.2	2.5	46.0	42.6	42.3**	43.6*
WILSON BLEND 3182	2.6	1.6	1.3	1.8	53.9*	43.8*	32.9	43.5
NORTHROP KING S39-99	2.6	1.6	1.0	1.7	50.8*	44.7*	34.7	43.4
DIAMOND BRAND D315	3.6	2.6	1.5	2.5	48.8	44.4*	36.7*	43.3
KELLER K-924	3.0	2.3	1.4	2.2	48.0	44.7*	37.4*	43.3
PRIZE 623	2.6	1.1	1.2	1.6	45.5	46.1*	37.7*	43.1
LEWIS 300	3.0	1.6	1.0	1.8	47.5	42.4	39.2*	43.0
DEKALB-PFIZER CX366	2.6	2.2	1.1	1.9	49.4	44.5*	34.6	42.8
ASGROW A3427	3.0	1.9	1.0	1.9	47.7	44.7*	36.1*	42.8
AMERICANA ATLANTIS	3.3	2.7	1.0	2.3	47.1	44.3*	36.4*	42.6
S-BRAND S-64A	3.3	1.6	1.3	2.0	44.7	47.6*	34.9	42.4
MASCO 8604	3.3	1.7	1.5	2.1	48.5	45.2*	33.6	42.4
AMERICANA TAURUS	3.3	2.3	1.0	2.2	49.7	47.7*	29.9	42.4
CFS 32	4.0	2.8	1.3	2.7	50.8*	43.2	33.0	42.3
DIAMOND BRAND D320B	2.3	1.3	1.1	1.5	49.3	40.2	37.1*	42.2
STINE 3500	2.6	1.7	1.0	1.7	49.5	43.9*	32.4	41.9
S-BRAND S-62	2.0	1.6	1.0	1.5	44.4	41.6	39.5*	41.8
RANDELL HAWK	2.6	1.3	1.0	1.6	50.1*	42.2	32.8	41.7
FS HISOY BRAND HS 302	2.3	1.9	1.0	1.7	48.0	42.0	34.9	41.6
PELLA 86	2.3	1.9	1.0	1.7	46.4	41.5	36.8*	41.5
S-BRAND S-60H	3.0	1.4	1.3	1.9	44.7	42.5	36.5*	41.2
JMS 3186	3.0	2.0	1.2	2.0	47.2	37.6	38.8*	41.2
HIDY BINBUSTER 4250	3.0	1.4	1.3	1.9	49.8	42.0	31.5	41.1
TERRA ADVANCE	2.6	1.5	1.2	1.7	46.8	39.9	36.8*	41.1
MERSCHMAN JEFFERSON V	3.0	2.0	1.0	2.0	47.8	44.4*	31.0	41.0
REEDS 333	3.0	2.1	1.7	2.2	46.1	38.8	37.7*	40.8
TERRA TRIUMPH	3.3	3.2	1.4	2.6	48.2	40.1	34.3	40.8
MERSCHMAN KENNEDY II	2.3	1.8	1.1	1.7	51.0*	39.9	31.3	40.7
REEDS 330	3.0	1.0	2.1	2.0	44.7	39.7	37.4*	40.6
SHERMAN	4.0	2.3	1.4	2.5	45.7	39.3	36.7*	40.5
MERSCHMAN MONROE	2.6	3.0	1.6	2.4	47.4	43.3	31.0	40.5
FS HISOY BRAND HS 348	3.0	2.0	1.5	2.1	50.5*	41.3	29.6	40.4
PRAIRIE BRAND GALAXY	4.0	2.4	1.6	2.6	47.9	42.4	31.0	40.4
OHLDE 4386	4.3	3.7	1.6	3.2	46.8	39.5	34.3	40.2
FUNK G3399	3.0	2.2	2.3	2.5	46.1	38.9	35.4	40.1
MERSCHMAN TRUMAN II	3.6	2.3	1.7	2.5	47.6	41.6	30.8	40.0
CHAMBERLAND	3.6	2.9	2.1	2.8	50.1*	36.9	32.4	39.8
S-BRAND S-58A	3.6	1.8	1.1	2.1	45.9	42.8	30.8	39.8
MERSCHMAN JEFFERSON IV	3.3	2.3	1.4	2.3	44.9	41.7	32.3	39.6
HIDY BINBUSTER 3802	4.0	4.3	1.0	3.1	45.4	35.5	38.1*	39.6
MERSCHMAN JEFFERSON III	3.6	1.9	1.0	2.1	46.4	39.8	32.4	39.5
FS HISOY BRAND HS 321	3.6	2.6	1.3	2.5	44.0	39.2	35.5	39.5
PELLA	2.3	1.6	1.1	1.6	44.8	40.7	32.9	39.4
MASCO 8493	3.6	3.5	2.2	3.1	48.8	38.8	30.6	39.4
WILSON BLEND 3560	3.3	3.6	2.1	3.0	48.6	36.8	32.9	39.4
HARPER	2.0	1.0	1.1	1.3	43.8	40.7	33.4	39.3
DIAMOND BRAND D245	4.0	2.6	2.5	3.0	45.5	35.3	37.2*	39.3
DIAMOND BRAND D280B	3.3	3.3	2.5	3.0	46.4	35.5	36.0*	39.3
MASCO DYNAMO II	3.6	3.6	1.2	2.8	47.2	40.1	30.6	39.3
NECO 950	3.0	1.6	1.5	2.0	47.5	37.9	32.6	39.3
COKER 393	3.3	2.5	1.4	2.4	43.4	40.0	34.2	39.2
JMS 3482	4.0	2.3	1.0	2.4	45.8	40.2	31.4	39.1
SILER SS-325	3.6	5.0	2.3	3.6	46.5	40.4	30.3	39.0
NECO 1000	3.3	4.0	1.5	2.9	42.9	40.5	33.5	38.9
RING AROUND RA303	3.6	3.9	2.4	3.3	46.0	32.0	38.9*	38.9
FAYETTE	4.0	2.6	2.1	2.9	44.9	36.2	35.3	38.8

TABLE 6. CONTINUED.

BRAND-VARIETY	LODGING SCORE(1-5)				YIELD (BU/ACRE)			
	BARNARD	LAREDO	NOVELTY	MEAN	BARNARD	LAREDO	NOVELTY	MEAN
AMERICANA RIVAL	4.0	4.2	1.7	3.3	43.7	38.7	34.1	38.8
FONTANELLE 6464	3.6	3.1	2.7	3.1	47.0	42.7	26.7	38.8
MERSCHMAN KENNEDY	2.6	2.2	1.8	2.2	43.4	38.1	35.0	38.8
PRESTON	3.3	3.2	1.4	2.6	44.6	36.4	35.2	38.7
ZANE	3.3	2.0	1.3	2.2	47.1	38.2	30.9	38.7
WINCHESTER	3.3	2.7	1.7	2.5	43.9	43.4	28.3	38.5
LYNKS SEED 8393	4.0	3.6	1.7	3.1	44.3	36.5	34.7	38.5
PRAIRIE BRAND 373	4.0	3.0	1.6	2.8	43.5	44.9*	27.2	38.5
HOFLER CRYSTAL	4.0	2.7	1.6	2.7	46.0	41.1	27.7	38.2
AGRIPRO AP 3773	2.6	2.3	1.2	2.0	46.2	40.4	28.2	38.2
SHISSLER GR8 388	4.0	2.7	1.7	2.8	37.5	41.3	35.2	38.0
MERSCHMAN EISENHOWER	3.3	3.0	2.0	2.7	42.4	39.4	32.2	38.0
McCUBBIN TROY	2.6	2.9	1.7	2.4	45.2	37.5	31.2	37.9
BRAD 39	4.6	3.9	1.4	3.3	42.8	37.9	33.0	37.9
FORTUNE 666	3.0	2.7	1.9	2.5	42.2	38.9	31.7	37.6
WILLIAMS	3.6	2.6	1.1	2.4	43.3	41.8	26.8	37.3
CFS 37	3.3	3.1	1.5	2.6	45.1	39.2	27.6	37.3
LEWIS 34	3.6	2.0	1.8	2.4	44.1	36.4	31.3	37.2
ASGROW A3966	3.3	3.0	1.8	2.7	43.3	41.4	26.9	37.2
OHLE 3380	3.0	2.0	1.4	2.1	41.8	39.5	30.4	37.2
LYNKS SEED 8380	4.0	3.6	1.7	3.1	40.2	36.5	34.7	37.1
HILL HS 3400	4.0	3.3	1.3	2.8	44.6	39.6	27.2	37.1
BRAD 40	3.3	2.9	1.1	2.4	42.9	37.8	30.4	37.0
FONTANELLE 6540	4.0	3.3	1.4	2.9	39.7	37.0	34.4	37.0
RAY-CARROLL CARROLL	4.0	3.3	2.5	3.2	41.4	38.0	30.2	36.5
SRF 350P	3.6	4.2	1.5	3.1	44.6	37.6	27.4	36.5
SRF MATSOY	4.0	3.6	2.4	3.3	41.0	34.9	33.8	36.5
BRAD 34	3.3	2.1	1.8	2.4	42.2	40.1	27.4	36.5
OHLE 4331	4.0	3.5	1.7	3.0	42.5	35.7	31.4	36.5
HOBBIT	1.0	1.0	1.0	1.0	44.9	27.9	35.5	36.1
WILLIAMS 82	3.3	2.9	1.4	2.5	41.8	38.9	27.4	36.0
HOFLER CORAL	4.0	2.7	2.5	3.0	44.3	35.5	28.2	36.0
SRF 307P	4.0	3.7	2.7	3.4	39.9	36.6	30.0	35.5
REEDS 320	3.0	1.0	2.2	2.0	44.3	33.9	27.1	35.1
SRF 390	3.0	2.9	1.5	2.4	42.2	34.9	26.9	34.6
AMERICANA SENTRY	4.3	4.4	1.7	3.4	41.5	31.0	28.9	33.8
MATURITY GROUP AVERAGE	3.3	2.5	1.5	2.4	46.0	40.4	33.1	39.8
MATURITY GROUP LSD AT .05	0.8	1.0	0.9	0.5	5.6	6.9	6.3	3.6
MATURITY GROUP 4								
NORTHROP KING S42-30	2.3	2.0	1.0	1.7	54.9**	47.2**	34.7	45.6**
MERSCHMAN HARRIS	2.2	2.8	1.3	2.1	54.1*	44.9*	33.9	44.3*
S-BRAND S-67	2.3	2.6	1.0	1.9	49.7*	47.0*	32.4	43.0*
STINE 4740	3.0	2.9	1.5	2.4	52.6*	41.4*	32.0	42.0
NORTHROP KING S42-40	3.0	2.6	1.0	2.2	51.1*	45.0*	29.9	42.0
DOUGLAS	2.9	2.8	1.3	2.3	47.7	44.8*	31.3	41.2
DEKALB-PFIZER CX415	2.6	2.7	1.0	2.1	48.1	45.5*	30.2	41.2
MERSCHMAN HOUSTON	3.9	3.9	1.9	3.2	49.7*	40.9	31.5	40.7
NECO 1350	3.9	3.0	3.0	3.3	43.0	39.2	39.6**	40.6
HOFLER JASPER	3.9	2.9	2.3	3.0	49.3*	39.7	32.3	40.4
TERRA COMPETITOR	4.0	3.7	2.6	3.4	44.6	40.6	35.7*	40.3
MERSCHMAN MEMPHIS	3.0	3.6	1.2	2.6	46.3	42.8*	30.8	39.9
AGRIPRO AP 4321	2.7	2.2	1.0	1.9	42.8	40.2	36.2*	39.7
KELLER K-931	3.5	3.9	2.0	3.1	47.3	43.4*	28.5	39.7
FORTUNE 747	2.9	2.1	1.0	2.0	44.6	40.6	32.8	39.3
MERSCHMAN DALLAS	4.0	4.4	2.9	3.7	42.9	40.5	34.1	39.1
REEDS 444	4.3	3.3	2.6	3.4	42.8	38.6	34.9	38.7
MERSCHMAN DENVER II	4.0	4.1	2.0	3.3	43.3	38.5	34.5	38.7
PIXIE	1.0	1.0	1.0	1.0	48.2	33.3	33.8	38.4
AGRIPRO GT 1380	3.7	3.3	2.2	3.0	47.1	38.6	29.3	38.3
McCUBBIN ALBANY II	2.9	3.0	1.9	2.6	42.7	41.4*	28.3	37.4
MERSCHMAN WILLIAMSBURG	2.6	3.2	1.0	2.2	46.2	38.8	26.9	37.3
PIONEER 9441	2.4	2.4	1.0	1.9	44.2	38.9	28.9	37.3
RIPLEY	1.0	1.0	1.1	1.0	51.0*	30.7	28.9	36.8
AGRIPRO AP 350	3.8	4.7	3.2	3.9	48.7	34.2	27.7	36.8
MERSCHMAN BOSTON	3.5	4.6	2.3	3.4	44.5	37.9	27.8	36.7
HILL HS 4150	3.6	3.8	2.3	3.2	46.7	37.5	25.4	36.5
UNION	3.5	3.7	2.4	3.2	43.1	37.5	28.6	36.4
JMS 4383	3.8	4.7	1.9	3.4	47.4	36.8	25.1	36.4
REEDS 390	2.6	2.8	1.0	2.1	46.6	37.5	24.9	36.3
HOFLER QUARTZ	2.6	3.3	1.0	2.3	43.3	35.1	28.1	35.5
SHISSLER GR8 420	3.7	3.6	1.6	2.9	44.2	38.6	23.3	35.3
REEDS 440	4.3	3.5	1.6	3.1	37.5	36.4	31.0	34.9
MERSCHMAN ATLANTA	3.9	4.3	1.6	3.3	41.1	39.0	24.8	34.9
SRF 425	4.0	4.7	1.8	3.5	42.8	35.8	24.9	34.5
SRF 450P	2.9	4.3	1.6	2.9	37.1	26.7	28.1	30.6
MATURITY GROUP AVERAGE	3.2	3.3	1.7	2.7	46.0	39.3	30.3	38.5
MATURITY GROUP LSD AT .05	0.8	1.0	0.6	0.5	5.7	6.1	4.3	3.1
TRIAL AVERAGE								
	3.2	2.7	1.5	2.4	45.5	39.5	32.9	39.3

** HIGHEST YIELDING VARIETY IN THE MATURITY GROUP.

* YIELD NOT SIGNIFICANTLY LESS THAN THE HIGHEST YIELDING VARIETY IN THE SAME MATURITY GROUP.

TABLE 7. PERFORMANCE OF SOYBEAN VARIETIES EVALUATED NEAR MARSHALL ON THE FRANK SWISHER FARM DURING 1984-86. PLANTED: 7 MAY 1986. HARVESTED: 21 OCTOBER 1986. PLANTING RATE: 9 SEEDS/FT.

BRAND-VARIETY	1986			LODGING SCORE(1-5)			YIELD (BU/ACRE)		
	MATU- RITY DATE	PLANT HEIGHT (IN)	1986	1985	1984	1986	1985	1984	
MATURITY GROUP 2									
DOUBLE SS 2900	8-31	43.0	1.6	--	--	67.6**	--	--	
CENTURY 84	8-20	37.3	1.6	--	--	62.7	--	--	
REEDS 222	9- 1	38.0	1.6	3.3	2.6	59.3	40.7	38.6	
SRF 250	9- 4	40.3	1.0	3.3	--	57.0	41.4**	--	
S-BRAND S-48c	9- 2	41.3	1.3	--	--	52.0	--	--	
MATURITY GROUP AVERAGE	8-30	40.0	1.5	3.0	3.0	59.7	38.7	39.0	
MATURITY GROUP LSD AT .05		NS	NS	NS		NS	NS	NS	
MATURITY GROUP 3									
MERSCHMAN EISENHOWER	9-12	46.6	2.5	4.0	--	73.0**	49.9*	--	
AMERICANA SENTRY	9-14	41.0	4.6	3.6	--	72.9*	49.9*	--	
FONTANELLE 6540	9-17	47.7	4.2	2.8	3.3	72.4*	49.2*	49.7*	
STINE 3790	9-13	43.8	2.4	1.7	--	71.0*	53.6*	--	
MERSCHMAN TRUMAN II	9- 8	40.0	1.9	2.7	2.3	70.9*	55.3**	44.1*	
SILER SS-325	9-11	43.3	3.4	3.6	--	70.1*	49.7*	--	
AMERICANA TAURUS	9- 9	46.2	3.3	--	--	69.5*	--	--	
WILSON BLEND 3560	9-10	38.9	3.4	--	--	69.4*	--	--	
ZANE	9- 3	39.4	2.3	3.1	--	68.7*	48.0	--	
S-BRAND S-62	9- 8	41.8	1.6	--	--	68.6*	--	--	
MERSCHMAN MONROE	9- 9	41.5	2.9	2.7	--	68.6*	51.7*	--	
S-BRAND S-64A	9- 6	39.3	1.4	--	--	68.4*	--	--	
PRIZE 622	9-13	43.9	2.0	--	--	68.2*	--	--	
JMS 3482	9- 9	44.7	2.7	2.9	2.6	67.8*	49.8*	47.3*	
NORTHROP KING S39-99	9-16	44.7	2.2	1.3	--	67.6*	53.2*	--	
JMS 3186	9- 3	40.2	2.3	--	--	67.5*	--	--	
CHAMBERLAND	9- 5	45.3	2.9	--	--	67.3*	--	--	
OHLDE 3380	9- 6	38.6	2.5	2.7	--	67.2*	48.2	--	
MERSCHMAN WASHINGTON VI	9-10	43.1	1.0	--	--	67.0*	--	--	
LEWIS 34	9- 8	47.0	2.3	--	2.6	66.7*	--	43.4*	
REEDS 333	9- 6	43.8	2.6	3.4	3.3	66.7*	49.9*	48.2*	
OHLDE 4386	9-24	55.4	4.2	--	4.6	66.4*	--	44.8*	
SRF 350P	9-14	49.0	3.9	3.8	2.6	66.1*	45.2	44.7*	
TERRA TRIUMPH	9- 9	44.8	3.1	--	--	66.1*	--	--	
SHERMAN	9- 7	42.1	2.9	3.0	--	65.9*	50.7*	--	
RAY-CARROLL CARROLL	9- 9	44.6	2.9	3.9	--	65.9*	45.0	--	
WILLIAMS	9-14	50.9	3.0	2.7	2.0	65.9*	47.7	43.4*	
WINCHESTER	9- 9	45.6	2.6	--	--	65.8*	--	--	
AMERICANA RIVAL	9-15	45.1	3.9	2.6	2.6	65.8*	45.4	47.5*	
MERSCHMAN KENNEDY	9- 6	45.7	2.6	3.3	2.0	65.7*	50.0*	39.7	
FS HISOY BRAND HS 348	9-10	46.2	2.5	3.2	--	65.7*	47.6	--	
ASGROW A3966	9-14	50.8	1.9	2.2	3.3	65.3*	47.5	47.2*	
SRF 390	9-11	41.5	2.1	2.2	--	65.1*	43.6	--	
PELLA	9- 3	44.2	2.3	2.9	2.0	65.0*	45.1	50.6*	
SILER SS-335	9-11	44.9	2.3	--	--	65.0*	--	--	
OHLDE 4331	9-17	47.8	3.3	--	--	64.8*	--	--	
COKER 393	9-13	46.9	2.1	1.9	2.3	64.8*	50.1*	42.8*	
FS HISOY BRAND HS 358	9-12	41.5	1.6	--	--	63.8*	--	--	
MERSCHMAN JEFFERSON IV	9- 5	42.8	1.9	3.3	--	63.7*	50.8*	--	
HARPER	9- 7	40.9	1.6	2.2	2.0	63.4*	48.9	38.3	
S-BRAND S-58A	9- 4	39.3	2.7	--	--	63.2*	--	--	
DEKALB-PFIZER CX366	9- 7	44.4	1.7	--	--	63.2*	--	--	
NECO 950	9- 5	39.5	2.0	2.6	--	63.1*	46.0	--	
FS HISOY BRAND HS 321	9- 8	42.9	2.6	--	--	62.1*	--	--	
LEWIS 300	9- 4	41.2	2.2	--	--	61.6*	--	--	
REEDS 320	9- 7	44.2	2.2	2.1	2.0	61.6*	43.4	40.1	
REEDS 330	9- 5	36.5	1.6	1.4	1.0	61.6*	40.7	33.7	
FORTUNE 666	9- 5	43.6	1.5	2.1	2.6	61.4*	47.4	49.9*	
NECO 1000	9-12	41.3	2.6	2.7	2.6	60.9	51.0*	41.8*	
PELLA 86	8-31	38.8	1.6	2.8	--	60.5	46.6	--	
SHISSLER GR8 388	9-12	39.0	3.0	2.6	2.6	60.3	51.7*	47.1*	
S-BRAND S-60H	9- 7	38.2	1.7	2.3	--	59.8	50.1*	--	
FAYETTE	9-14	48.1	2.9	2.8	--	59.6	48.7	--	
DOUBLE SS 3285	9- 6	43.0	1.9	--	--	59.6	--	--	
WILLIAMS 82	9-13	48.6	3.2	2.9	2.0	59.3	45.7	34.0	
MERSCHMAN KENNEDY II	9- 8	40.7	1.3	2.4	--	58.8	47.6	--	
LYNKS SEED 8393	9- 9	43.9	2.6	--	--	58.6	--	--	
PRESTON	8-24	39.8	2.1	--	--	58.4	--	--	
MERSCHMAN JEFFERSON V	9- 7	40.1	1.2	--	--	58.2	--	--	
FUNK G3399	9-12	46.5	2.8	2.0	--	57.6	49.1	--	
SRF 307P	9- 8	45.3	3.0	3.2	2.6	55.8	41.7	40.3	
SRF MATSOY	9- 6	44.0	3.5	4.1	2.3	55.7	41.5	37.4	
DOUBLE SS 3900	9- 5	44.5	2.2	--	--	52.1	--	--	
RING AROUND RA303	8-27	37.8	2.9	4.0	4.6	50.1	44.0	44.4*	
MATURITY GROUP AVERAGE	9- 9	43.5	2.6	2.8	2.5	64.2	47.7	43.4	
MATURITY GROUP LSD AT .05		4.3	1.2	1.1		11.8	6.1	11.7	

TABLE 7. CONTINUED.

BRAND-VARIETY	1986			LODGING SCORE(1-5)			YIELD (BU/ACRE)		
	MATU- RITY DATE	PLANT HEIGHT (IN)	1986	1985	1984	1986	1985	1984	
	Maturity Group 4								
RAY-CARROLL RAY	9-19	51.0	3.0	3.4	--	79.3**	51.8*	--	
ASGROW A4595	9-21	53.0	3.6	--	--	75.1*	--	--	
S-BRAND S-67	9-13	44.6	1.6	--	--	72.8*	--	--	
RIPLEY	9-14	26.0	1.0	1.3	1.0	71.8*	50.7*	49.7*	
AMERICANA B567	9-28	58.0	4.3	3.4	--	70.8*	49.7*	--	
MERSCHMAN MEMPHIS	9-18	45.6	2.6	3.5	--	70.8*	46.8	--	
SRF 425	9-23	54.6	3.5	3.1	3.0	70.6*	46.3	42.6	
MERSCHMAN HOUSTON	9-20	51.6	3.6	4.1	--	70.4*	52.8*	--	
MERSCHMAN DALLAS	9-26	58.3	3.6	4.0	4.6	70.4*	48.0	43.5	
ASGROW A4271	9-19	51.3	2.6	2.3	2.0	70.1*	49.6*	52.1*	
NORTHROP KING S42-30	9-14	43.3	1.9	1.7	--	69.5*	53.2*	--	
MERSCHMAN DENVER II	9-25	58.3	4.0	4.0	4.3	69.4*	46.3	47.6*	
MFA PV42	9-20	48.6	2.7	1.8	2.0	69.2*	47.3	42.9	
MERSCHMAN WILLIAMSBURG	9-14	45.3	2.6	3.0	--	68.8*	48.9*	--	
MERSCHMAN HARRIS	9-14	46.3	2.0	3.2	--	68.8*	47.7	--	
PIXIE	9-18	22.3	1.0	1.0	1.0	68.5	41.9	45.7*	
DEKALB-PFIZER CX415	9-15	48.6	1.9	2.8	--	68.3	52.2*	--	
MERSCHMAN BOSTON	9-21	50.0	3.9	3.5	3.6	68.2	54.9**	42.7	
JMS 4383	9-20	52.0	4.3	4.1	3.0	67.6	45.9	42.5	
SHISSLER GR8 420	9-19	49.0	3.3	4.0	--	67.6	46.3	--	
PIONEER 9441	9-22	48.6	2.9	1.7	--	67.3	50.2*	--	
LYNKS SEEDS 8405	9-18	48.3	4.3	--	--	67.1	--	--	
REEDS 444	9-25	55.0	3.9	4.3	4.6	67.1	52.2*	46.1*	
NECO 1350	9-27	57.6	4.3	3.8	5.0	67.1	48.5*	44.3	
NORTHROP KING S42-40	9-17	45.3	3.6	3.8	3.3	66.9	44.0	53.9**	
LEWIS 46	9-20	52.0	3.0	--	3.6	66.3	--	51.7*	
LEWIS 465	9-21	49.0	3.0	--	--	65.8	--	--	
PIONEER 9471	9-25	52.6	3.0	2.6	--	65.6	43.0	--	
JACQUES J-130	9-27	58.0	4.3	--	5.0	65.4	--	43.3	
DOUGLAS	9-22	46.3	3.3	3.0	3.6	65.2	52.0*	48.3*	
PERSHING	10- 8	37.0	1.0	--	1.6	65.0	--	30.9	
DESOTO	9-21	52.3	2.6	2.6	3.3	64.8	48.8*	43.8	
FORTUNE 747	9- 8	45.0	2.3	3.2	--	64.6	44.6	--	
JACQUES J-431	9-17	49.6	2.3	--	--	63.5	--	--	
PRIZE 818	9-20	52.3	4.0	3.5	--	63.2	49.8	--	
BELLATTI B50-253	9-20	52.0	2.6	--	--	63.2	--	--	
SPARKS	9-11	47.0	2.9	4.7	--	63.1	42.8	--	
HILL HS 4050	9-16	50.3	3.0	--	--	63.1	--	--	
STINE 4190	9-26	57.0	3.7	4.2	5.0	62.9	47.5	48.1*	
JMS 4982	9-26	60.0	4.7	4.3	4.3	62.8	46.9	48.3*	
REEDS 390	9-18	43.3	2.7	2.0	--	62.8	46.7	--	
RAY-CARROLL RAY2	9-22	52.3	3.6	--	--	62.8	--	--	
STINE 4770	9-22	52.6	3.3	--	--	62.7	--	--	
RING AROUND RA404	9-21	51.0	3.0	2.2	2.3	62.4	51.0*	44.4	
UNION	9-20	56.0	4.6	3.8	3.0	62.2	43.2	38.8	
HILL HS 4000	9-23	48.3	3.2	--	--	62.0	--	--	
RAY-CARROLL LAFAYETTE	9-17	46.0	3.0	--	--	61.8	--	--	
RAY-CARROLL CHARITON	9-25	57.0	3.3	--	--	61.5	--	--	
REEDS 460	9-23	34.3	1.0	2.1	--	61.4	42.4	--	
MERSCHMAN ATLANTA	9-23	52.0	4.6	4.0	3.6	61.0	46.0	45.1*	
HILL HS 4150	9-16	51.6	3.0	2.6	3.3	61.0	46.3	48.2*	
AMERICANA B566	9-20	48.3	3.3	--	--	60.4	--	--	
CRAWFORD	9-27	60.3	4.9	2.4	4.6	59.2	41.2	36.2	
REEDS 440	9-28	49.0	4.2	1.1	2.6	57.1	44.0	49.1*	
SRF 450P	9-26	53.3	2.5	3.1	3.6	56.8	36.9	45.6*	
Maturity Group Average	9-21	49.5	3.2	3.2	3.5	65.8	47.2	44.6	
Maturity Group LSD at .05		5.0	1.2	1.1		10.6	6.7	9.1	
TRIAL AVERAGE		45.6	2.7	3.0	3.0	64.7	47.2	43.8	

-- DATA NOT AVAILABLE.

** HIGHEST YIELDING VARIETY IN THE MATURITY GROUP.

* YIELD NOT SIGNIFICANTLY LESS THAN THE HIGHEST YIELDING VARIETY IN THE SAME MATURITY GROUP.

NS NOT SIGNIFICANT.

TABLE 8. PERFORMANCE OF SOYBEAN VARIETIES EVALUATED NEAR LAMAR ON THE WALLY NORTON FARM DURING 1985-86 AND THE DON CULVER FARM DURING 1984.
 PLANTED: 2 MAY 1986. HARVESTED: 30 OCTOBER 1986. PLANTING RATE: 9 SEEDS/FT.

BRAND-VARIETY	1986		LODGING SCORE(1-5)			YIELD (BU/ACRE)		
	MATU- RITY DATE	PLANT HEIGHT (IN)	1986	1985	1984	1986	1985	1984
MATURITY GROUP 3								
NECO 1000	8-15	24.6	1.0	1.3	1.0	25.9**	31.4*	14.7**
COKER 393	8-21	29.3	1.0	1.0	1.0	25.5	30.3*	14.4
WILLIAMS	8-17	27.0	1.0	1.0	1.0	24.3	33.9**	9.9
SRF 307P	8- 8	31.0	1.3	1.3	1.0	23.5	27.2	6.3
SRF 390	8-15	26.6	1.0	1.0	--	22.2	29.5*	--
DEKALB-PFIZER CX380	8-17	28.6	1.0	--	1.0	21.6	--	7.1
SRF 350P	8-10	30.3	1.6	1.0	1.0	21.2	25.5	14.2
WILLIAMS 82	8-23	29.0	1.0	1.0	1.0	19.6	29.7*	8.1
SRF MATSOY	8- 6	27.6	2.3	2.0	1.0	18.3	26.6	11.0
PELLA	8- 3	25.0	1.0	--	--	18.0	--	--
PELLA 86	7-31	26.3	1.0	--	--	16.9	--	--
MATURITY GROUP AVERAGE	8-13	27.8	1.2	1.2	1.0	21.5	29.2	10.8
MATURITY GROUP LSD AT .05		2.6	0.9	NS		NS	6.6	NS
MATURITY GROUP 4								
S79-4259	9-16	42.4	2.6	--	--	47.0**	--	--
RING AROUND RA452	9-13	35.0	1.3	1.0	--	44.7*	34.1	--
REEDS 460	8-30	24.6	1.0	1.0	--	39.5*	30.0	--
PERSHING	9-16	25.6	1.0	1.0	1.0	38.6*	30.9	25.5*
MERSCHMAN DALLAS	9-12	33.8	1.3	2.6	1.3	38.5*	38.5*	15.2
RAY-CARROLL CHARITON	9- 5	36.0	1.3	1.6	--	37.1	34.2	--
NECO B-4	9- 8	36.2	1.6	--	--	36.6	--	--
REEDS 440	9- 9	26.9	1.0	1.0	1.0	35.7	33.5	9.3
S79-4296	9-13	34.2	2.6	--	--	35.2	--	--
PRIZE 828	9-12	35.3	1.7	2.6	1.3	35.2	40.7*	19.9
CRAWFORD	9-10	32.7	1.3	1.0	1.0	34.1	33.6	16.4
DEKALB-PFIZER CX415	8-18	33.1	1.0	1.0	--	33.1	35.4	--
RING AROUND RA404	8-23	29.8	1.0	1.3	1.0	30.6	37.6*	9.6
STINE 4780	8-26	31.1	1.7	--	--	30.5	--	--
MFA PV42	8-22	29.7	1.0	1.0	1.0	30.4	29.2	13.4
UNION	8-18	31.1	1.0	1.0	1.0	29.8	29.1	8.5
SRF 425	8-26	32.0	1.0	1.0	1.3	28.3	25.6	6.5
NECO 1350	9-11	37.8	1.7	1.6	1.6	28.0	36.0	16.9
DeLANGE BRAND DS49	9-17	34.2	1.3	1.0	1.0	27.1	31.2	12.0
ASGROW A4595	8-21	31.8	1.0	--	--	26.7	--	--
JACQUES J-431	8-25	27.8	1.0	--	--	26.0	--	--
PRIZE 818	8-19	29.8	1.3	--	--	26.0	--	--
SRF 450P	8-25	32.6	1.0	1.0	1.0	24.5	26.0	8.5
DOUGLAS	8-22	30.0	1.0	1.0	1.0	23.5	35.4	10.0
DESOTO	8-24	32.6	1.0	1.0	1.0	23.3	30.5	8.5
DeLANGE BRAND DS42	8-25	36.2	1.0	--	--	22.8	--	--
SPARKS	8-13	31.5	1.9	1.0	--	22.5	30.5	--
PIXIE	8-16	17.0	1.0	1.0	1.0	22.0	26.7	16.4
RIPLEY	8-15	18.8	1.0	--	--	15.5	--	--
MATURITY GROUP AVERAGE	8-30	31.2	1.3	1.2	1.1	30.2	32.0	12.4
MATURITY GROUP LSD AT .05		3.5	0.6	0.6		9.2	6.7	4.5
MATURITY GROUP 5								
ASGROW A5149	9-17	29.3	1.3	1.3	--	41.4**	35.3	--
FORREST	9-24	35.0	2.0	1.0	3.0	41.1	30.7	24.3
COKER 425	9-19	22.6	2.0	1.0	1.0	40.9	31.8	29.5**
PIONEER 9541	9-20	30.3	2.6	--	--	40.8	--	--
EPPS	9-22	28.3	3.3	--	--	38.7	--	--
BAY	9-27	32.6	3.3	1.0	2.3	38.1	35.7**	22.8
ESSEX	9-17	26.6	2.0	1.0	1.6	38.0	32.0	26.9
MATURITY GROUP AVERAGE	9-20	29.3	2.4	1.0	2.0	39.8	32.0	24.7
MATURITY GROUP LSD AT .05		5.1	1.1	NS		NS	NS	NS
TRIAL AVERAGE								
		30.1	1.4	1.2	1.2	29.6	31.5	14.2

-- DATA NOT AVAILABLE.

** HIGHEST YIELDING VARIETY IN THE MATURITY GROUP.

* YIELD NOT SIGNIFICANTLY LESS THAN THE HIGHEST YIELDING VARIETY IN THE SAME MATURITY GROUP.

NS NOT SIGNIFICANT.

TABLE 9. PERFORMANCE OF SOYBEAN VARIETIES EVALUATED NEAR ESSEX ON THE LANCE CANNON FARM IN 1986 AND NEAR PARMA ON THE CLAUDE KEASLER FARM DURING 1984-85.
 PLANTED: 6 MAY 1986. HARVESTED: 17 OCTOBER 1986. PLANTING RATE: 9 SEEDS/FT.

BRAND-VARIETY	1986		LODGING SCORE(1-5)			YIELD (BU/ACRE)		
	MATU- RITY DATE	PLANT HEIGHT (IN)	1986	1985	1984	1986	1985	1984

MATURITY GROUP 4								
RING AROUND RA 452	9-26	45.3	2.6	2.9	--	53.8**	36.3	--
RING AROUND RA 451	10- 2	45.6	1.0	1.6	2.0	53.6*	30.9	34.1
S79-4296	9-29	48.6	3.3	--	--	51.8*	--	--
RING AROUND RA 480	9-29	45.0	2.3	3.6	--	50.9*	29.4	--
S79-4259	9-26	46.6	3.0	--	--	50.1*	--	--
S81-2203	9-24	37.3	3.3	--	--	49.7*	--	--
PERSHING	9-27	18.3	1.0	1.0	1.0	46.1	31.2	43.5*
HYPERFORMER STEVENS	9-22	41.3	5.0	3.9	3.0	43.2	19.3	28.7
DOUGLAS	9-22	30.0	2.0	2.0	1.6	40.5	18.8	28.1
UNION	9-22	36.0	3.3	3.3	2.3	40.4	19.8	22.2
MATURITY GROUP AVERAGE	9-26	39.4	2.7	2.5	2.0	48.0	20.7	30.2
MATURITY GROUP LSD AT .05		5.2	0.8	1.1		6.3	7.4	5.9
MATURITY GROUP 5								
PIONEER VARIETY 9571	10- 9	29.0	1.0	3.0	5.0	56.2**	42.3*	42.2*
PIONEER VARIETY 9581	10- 7	26.0	1.0	--	--	56.1*	--	--
COKER 485	10-12	23.6	1.0	2.0	2.6	55.1*	35.2	43.3*
DELTA PINE 105	10- 7	26.0	2.0	3.0	4.3	53.1*	34.8	44.0*
DELTA PINE 415	10- 1	22.0	1.3	--	--	53.0*	--	--
HARTZ X5164	10- 4	24.0	1.3	--	--	52.4*	--	--
PIONEER VARIETY 9531	9-25	23.6	1.0	1.0	--	52.1*	36.4	--
PIONEER VARIETY 5482	10- 9	23.3	1.0	1.6	2.0	51.6*	41.4*	42.5*
COKER 355	10- 6	25.3	1.3	2.0	5.0	50.8*	39.2	46.2*
YIELD KING 577	10- 8	26.3	2.3	--	--	50.7*	--	--
FORREST	10- 5	25.6	1.0	1.0	4.0	50.6	34.9	37.2
YIELD KING 503	10- 4	38.3	1.3	3.3	3.0	50.5	31.5	22.9
EPSS	10- 6	23.0	2.3	--	--	49.9	--	--
HARTZ 5252	10- 3	27.0	1.3	1.3	3.6	49.9	32.7	35.6
NATHAN	9-26	27.6	1.3	3.6	5.0	49.8	35.9	35.2
ASGROW A5980	10- 7	32.6	1.6	3.0	4.3	49.6	33.7	45.4*
ASGROW A5474	9-29	22.6	1.0	1.3	3.6	49.5	38.4	46.8**
DELTA PINE 675	10- 7	25.3	1.3	--	--	49.5	--	--
S80-2959	10- 8	22.6	1.0	--	--	49.5	--	--
CAPEHART NOBLE	10-10	20.3	1.0	--	--	48.6	--	--
BEDFORD	10- 8	28.3	2.0	3.6	5.0	48.3	38.7	39.3*
HARTZ 5370	10- 7	28.6	1.0	2.3	3.0	48.3	33.3	38.0
HYPERFORMER SHENANDOAH BAY	10- 7	27.3	1.0	--	--	48.2	--	--
HARTZ 5171	9-29	21.0	1.3	1.0	4.3	47.4	34.8	34.5
ASGROW A5149	10- 8	29.0	2.0	2.3	4.3	47.0	33.7	40.7*
MIDWEST OILSEEDS 5800	9-28	20.0	1.0	1.0	--	46.8	29.7	--
COKER 425	9-22	37.3	3.3	--	--	43.6	--	--
MACK	9-24	14.6	1.0	1.0	1.3	42.2	22.9	42.1*
ESSEX	9-29	20.0	2.0	3.0	4.6	41.9	28.1	30.2
MATURITY GROUP AVERAGE	9-25	17.6	2.6	1.3	3.3	32.3	24.7	37.4
MATURITY GROUP LSD AT .05	10- 4	25.3	1.5	1.9	3.8	49.0	34.5	38.0
		5.0	0.9	1.2		5.5	7.3	7.5
MATURITY GROUP 6								
HARTZ 6130	10-13	35.0	2.3	2.0	4.0	52.9**	37.7*	43.3*
DELTA PINE 566	10-13	39.6	4.0	1.6	--	50.6	32.7	--
YIELD KING 613	10-11	43.6	3.6	3.3	5.0	50.0	32.0	37.0
DAVIS	10-18	40.0	3.3	2.6	4.3	49.4	33.4*	37.7
YIELD KING 593	10-23	31.3	2.3	1.6	3.6	48.8	31.4	39.5
ASGROW A6242	10-16	30.0	2.3	3.0	5.0	48.1	38.7	43.7*
BRADLEY	10-12	33.6	3.0	2.0	5.0	47.9	31.5	41.4*
TRACY M	10-11	37.6	4.3	3.3	4.0	44.6	33.1	38.8
RING AROUND RA 606	10-21	39.0	3.3	2.3	--	43.0	36.3	--
CENTENNIAL	10-21	36.6	3.0	--	--	39.4	--	--
MATURITY GROUP AVERAGE	10-20	36.7	3.2	2.2	4.6	47.4	33.4	36.1
MATURITY GROUP LSD AT .05		6.7	0.9	NS		NS	5.5	10.1

TRIAL AVERAGE		30.6	2.0	2.1	3.5	48.5	30.2	35.1

-- DATA NOT AVAILABLE.

** HIGHEST YIELDING VARIETY IN THE MATURITY GROUP.

* YIELD NOT SIGNIFICANTLY LESS THAN THE HIGHEST YIELDING VARIETY IN THE SAME MATURITY GROUP.

NS NOT SIGNIFICANT.

TABLE 10. PERFORMANCE OF SOYBEAN VARIETIES EVALUATED NEAR PORTAGEVILLE ON THE DELTA RESEARCH CENTER DURING 1984-86. PLANTED: 7 MAY 1986. HARVESTED: 16 OCTOBER 1986. PLANTING RATE: 9 SEEDS/FT.

BRAND-VARIETY	1986		LODGING SCORE(1-5)			YIELD (BU/ACRE)		
	MATU- RITY DATE	PLANT HEIGHT (IN)	1986	1985	1984	1986	1985	1984

MATURITY GROUP 4								
RING AROUND RA 452	9-26	34.3	1.0	1.0	--	50.1**	20.2	--
S79-4259	9-27	42.6	1.3	--	--	46.9*	--	--
HYPERFORMER STEVENS	9-24	31.3	1.3	1.0	1.6	46.8*	21.0*	28.8
RING AROUND RA 451	9-30	37.0	1.0	1.0	1.0	46.8*	25.1*	33.3*
RING AROUND RA 480	9-29	26.3	1.0	1.3	--	46.1*	30.4**	--
S79-4296	9-25	36.0	1.3	--	--	41.4	--	--
UNION	9-10	28.6	1.0	1.0	1.3	40.9	18.9	22.5
S81-2203	9-26	27.3	1.0	--	--	40.6	--	--
DOUGLAS	9-24	22.3	1.0	1.0	1.0	38.0	11.0	20.9
PERSHING	9-26	16.0	1.0	1.0	1.0	32.4	26.2*	36.9**
MATURITY GROUP AVERAGE	9-25	30.2	1.1	1.1	1.2	43.0	16.9	24.8
MATURITY GROUP LSD AT .05		4.6	0.5	0.8		7.3	9.5	7.0
MATURITY GROUP 5								
ASGROW A5980	10- 3	27.0	1.0	1.3	3.3	52.2**	43.8**	44.1*
PIONEER VARIETY 9581	10- 3	21.0	1.0	--	--	52.0*	--	--
HARTZ X5164	10- 3	20.6	1.0	--	--	51.4*	--	--
YIELD KING 577	10- 3	22.3	1.0	--	--	49.1*	--	--
YIELD KING 503	9-30	26.6	1.0	1.0	2.3	49.0*	27.5	37.0
FORREST	10- 3	22.6	1.0	1.0	3.0	48.1*	35.2	42.0*
COKER 485	10- 8	20.0	1.0	1.6	3.0	46.9*	35.2	44.7*
COKER 355	10- 4	20.6	1.0	1.0	2.3	46.6*	31.3	39.4
BEDFORD	10- 2	27.0	1.0	2.0	4.3	45.6*	34.8	40.2
HYPERFORMER SHENANDOAH	10- 7	20.0	1.0	--	--	45.4*	--	--
CAPEHART NOBLE	10- 8	19.3	1.0	--	--	45.0*	--	--
HARTZ 5252	10- 3	22.6	1.0	1.3	3.6	44.9*	30.0	39.7
DELTA PINE 675	10- 4	25.3	1.0	--	--	44.2*	--	--
PIONEER VARIETY 5482	10- 5	23.0	1.0	1.0	2.0	43.9*	29.1	40.4
HARTZ 5171	10- 8	21.0	1.0	1.3	4.0	43.5	34.0	46.3**
DELTA PINE 105	10- 8	22.3	1.0	1.3	2.6	42.9	39.1*	42.8*
ASGROW A5474	9-29	21.0	1.0	1.0	2.0	42.1	35.1	41.0
HARTZ 5370	10- 4	23.6	1.0	1.6	3.3	40.9	36.1*	39.8
PIONEER VARIETY 9531	9-27	19.3	1.0	1.3	--	40.2	34.8	--
EPPS	10- 3	23.6	1.6	--	--	40.0	--	--
S80-2959	10- 8	20.6	1.0	--	--	39.6	--	--
PIONEER VARIETY 9571	10- 2	20.3	1.0	1.0	3.3	39.1	32.8	36.1
BAY	9-28	18.6	1.0	1.0	2.3	38.2	31.7	36.1
NATHAN	9-23	27.6	1.0	2.0	3.6	37.0	32.1	34.2
MIDWEST OILSEEDS 5800	9-22	26.0	1.0	--	--	36.5	--	--
MACK	10- 2	20.0	1.3	3.6	4.0	34.9	31.3	33.7
DELTA PINE 415	9-26	20.0	1.0	--	--	32.7	--	--
ASGROW A5149	9-28	17.6	1.0	1.3	--	30.8	32.9	--
COKER 425	9-27	13.6	1.0	1.0	1.0	29.4	26.5	40.8
ESSEX	9-25	16.0	1.0	1.0	2.3	26.5	24.8	29.9
MATURITY GROUP AVERAGE	10- 2	21.7	1.0	1.3	2.9	41.7	32.4	38.7
MATURITY GROUP LSD AT .05		2.8	0.2	0.7		8.6	8.4	5.0
MATURITY GROUP 6								
HARTZ 6130	10-17	31.6	1.0	1.3	3.0	52.9**	39.8*	41.0
TRACY M	10-19	30.0	1.3	2.7	2.6	51.5*	38.7*	39.1
ASGROW A6242	10-20	26.6	1.0	1.6	3.0	50.4*	41.1*	46.8*
YIELD KING 613	10-18	37.6	1.0	1.2	2.0	44.5*	29.4	36.9
BRADLEY	10- 8	23.0	1.0	1.7	3.6	43.2*	31.6	34.0
RING AROUND RA 606	10-19	34.6	1.0	1.7	--	43.1*	41.6**	--
YIELD KING 593	10-19	32.0	1.0	1.0	2.6	37.1	38.6*	42.8*
DAVIS	10-18	32.3	1.0	1.0	2.3	36.9	38.8*	38.7
CENTENNIAL	10-29	31.3	1.0	--	--	36.0	--	--
DELTA PINE 566	10-30	32.0	1.3	1.0	--	35.7	36.9	--
MATURITY GROUP AVERAGE	10-20	31.1	1.1	1.5	2.7	43.1	36.7	39.9
MATURITY GROUP LSD AT .05		4.6	0.6	1.0		10.1	4.6	6.2

TRIAL AVERAGE		25.4	1.0	1.2	2.3	42.2	28.7	34.9

-- DATA NOT AVAILABLE.

** HIGHEST YIELDING VARIETY IN THE MATURITY GROUP.

* YIELD NOT SIGNIFICANTLY LESS THAN THE HIGHEST YIELDING VARIETY IN THE SAME MATURITY GROUP.

TABLE 11. PERFORMANCE OF SOYBEAN VARIETIES EVALUATED AT TWO SOUTHEAST MISSOURI LOCATIONS (ESSEX AND PORTAGEVILLE) DURING 1986.
PLANTING RATE: 9 SEEDS/FT.

BRAND-VARIETY	LODGING SCORE(1-5)			YIELD (BU/ACRE)		
	ESSEX	PORTAGEVILLE	MEAN	ESSEX	PORTAGEVILLE	MEAN
Maturity Group 4						
RING AROUND RA 452	2.6	1.0	1.8	53.8**	50.1**	51.9**
RING AROUND RA 451	1.0	1.0	1.0	53.6*	46.8*	50.2*
RING AROUND RA 480	2.3	1.0	1.6	50.9*	46.1*	48.5*
S79-4259	3.0	1.3	2.1	50.1*	46.9*	48.5*
S79-4296	3.3	1.3	2.3	51.8**	41.4	46.6
S81-2203	3.3	1.0	2.1	49.7*	40.6	45.1
HYPERFORMER STEVENS	5.0	1.3	3.1	43.2	46.8*	45.0
UNION	3.3	1.0	2.1	40.4	40.9	40.6
DOUGLAS	2.0	1.0	1.5	40.5	38.0	39.2
PERSHING	1.0	1.0	1.0	46.1	32.4	39.2
Maturity Group Average	2.7	1.1	1.9	48.0	43.0	45.4
Maturity Group LSD at .05	0.8	0.5	0.6	6.3	7.3	4.7
Maturity Group 5						
PIONEER VARIETY 9581	1.0	1.0	1.0	56.1*	52.0*	54.0**
HARTZ X5164	1.3	1.0	1.1	52.4*	51.4*	51.9*
COKER 485	1.0	1.0	1.0	55.1*	46.9*	51.0*
ASGROW A5980	1.6	1.0	1.2	49.6	52.2**	50.9*
YIELD KING 577	2.3	1.0	1.6	50.7*	49.1*	49.9*
YIELD KING 503	1.3	1.0	1.1	50.5	49.0*	49.7*
FORREST	1.0	1.0	1.0	50.6	48.1*	49.3*
COKER 355	1.3	1.0	1.1	50.8*	46.6*	48.7*
DELTA PINE 105	2.0	1.0	1.5	53.1*	42.9	48.0
PIONEER VARIETY 5482	1.0	1.0	1.0	51.6*	43.9*	47.7
PIONEER VARIETY 9571	1.0	1.0	1.0	56.2**	39.1	47.6
HARTZ 5252	1.3	1.0	1.1	49.9	44.9*	47.4
BEDFORD	2.0	1.0	1.4	48.3	45.6*	46.9
HYPERFORMER SHENANDOAH	1.0	1.0	1.0	48.2	45.4*	46.8
DELTA PINE 675	1.3	1.0	1.1	49.5	44.2*	46.8
CAPEHART NOBLE	1.0	1.0	1.0	48.6	45.0*	46.8
PIONEER VARIETY 9531	1.0	1.0	1.0	52.1*	40.2	46.1
ASGROW A5474	1.0	1.0	1.0	49.5	42.1	45.8
HARTZ 5171	2.0	1.0	1.4	47.0	43.5	45.2
EPDS	2.3	1.6	1.9	49.9	40.0	44.9
HARTZ 5370	1.0	1.0	1.0	48.3	40.9	44.6
S80-2959	1.0	1.0	1.0	49.5	39.6	44.5
NATHAN	1.3	1.0	1.1	49.8	37.0	43.4
BAY	1.3	1.0	1.1	47.4	38.2	42.8
DELTA PINE 415	1.3	1.0	1.1	53.0*	32.7	42.8
MIDWEST OILSEEDS 5800	3.3	1.0	2.1	43.6	36.5	40.0
ASGROW A5149	1.0	1.0	1.0	46.8	30.8	38.8
MACK	2.0	1.3	1.6	41.9	34.9	38.4
COKER 425	1.0	1.0	1.0	42.2	29.4	35.8
ESSEX	2.6	1.0	1.8	32.3	26.5	29.4
Maturity Group Average	1.5	1.0	1.2	49.0	41.7	45.3
Maturity Group LSD at .05	0.9	0.2	0.4	5.5	8.6	5.3
Maturity Group 6						
HARTZ 6130	2.3	1.0	1.6	52.9**	52.9**	52.9**
ASGROW A6242	2.3	1.0	1.6	48.1	50.4*	49.2*
TRACY M	4.3	1.3	2.8	44.6	51.5*	48.0*
YIELD KING 613	3.6	1.0	2.3	50.0	44.5*	47.2*
BRADLEY	3.0	1.0	2.0	47.9	43.2*	45.5
DAVIS	3.3	1.0	2.1	49.4	36.9	43.1
DELTA PINE 566	4.0	1.3	2.6	50.6	35.7	43.1
RING AROUND RA 606	3.3	1.0	2.1	43.0	43.1*	43.0
YIELD KING 593	2.3	1.0	1.6	48.8	37.1	42.9
CENTENNIAL	3.0	1.0	2.0	39.4	36.0	37.7
Maturity Group Average	3.2	1.1	2.2	47.4	43.1	45.2
Maturity Group LSD at .05	0.9	0.6	0.7	NS	10.1	6.5
TRIAL AVERAGE						
TRIAL AVERAGE	2.0	1.0	1.5	48.5	42.2	45.3

** HIGHEST YIELDING VARIETY IN THE MATURITY GROUP.

* YIELD NOT SIGNIFICANTLY LESS THAN THE HIGHEST YIELDING VARIETY IN THE SAME MATURITY GROUP.

NS NOT SIGNIFICANT.

TABLE 12. PERFORMANCE OF EXPERIMENTAL SOYBEAN VARIETIES EVALUATED NEAR BARNARD ON THE MEYER BROTHERS FARM IN 1986 AND NEAR FAIRFAX ON THE SEYMOUR BROTHERS FARM DURING 1985. PLANTED: 2 JUNE 1986. HARVESTED: 30 OCTOBER 1986. PLANTING RATE: 9 SEEDS/FT.

BRAND-VARIETY	1986		LODGING SCORE(1-5)			YIELD (BU/ACRE)		
	MATU- RITY DATE	PLANT HEIGHT (IN)	1986	1985	1984	1986	1985	1984
MATURITY GROUP 2								
KING CITY-386	9-23	47.0	2.0	--	--	50.9	--	--
FONTANELLE 6161 #	9-25	45.2	2.0	1.5	--	47.3	48.7	--
MATURITY GROUP AVERAGE	9-24	46.1	2.0	1.4		49.1	49.2	
MATURITY GROUP LSD AT .05				NS			NS	
MATURITY GROUP 3								
DIAMOND BRAND DX86-2302	9-29	43.2	2.5	--	--	58.6**	--	--
DIAMOND BRAND DX86-1309	9-29	47.0	2.7	--	--	53.1	--	--
TERRA EX.330	9-22	46.0	3.5	--	--	51.1	--	--
PELLA #	9-25	45.7	1.7	--	--	50.1	--	--
DIAMOND BRAND DX86-2303	9-29	43.5	2.2	--	--	49.8	--	--
NAPB EX.3988	10- 3	46.0	2.0	--	--	49.6	--	--
HILL HS 2850	9-26	42.2	3.0	1.5	--	49.6	48.7	--
MCCUBBIN EX.60518	9-28	45.0	3.2	2.0	--	49.5	50.4*	--
JACQUES E8636	9-30	48.5	3.7	--	--	47.6	--	--
HILL HS 3200	9-26	42.5	3.0	1.2	--	46.4	50.4*	--
RHS EX.623	9-23	42.0	3.0	--	--	46.3	--	--
NAPB EX.3977	10- 1	42.5	1.7	--	--	45.8	--	--
SIDWELL SEED BES8633	9-26	45.2	3.0	--	--	44.4	--	--
WILLIAMS 82 #	10- 1	47.7	3.2	1.2	--	43.7	42.7	--
MATURITY GROUP AVERAGE	9-28	44.8	2.7	1.5		48.9	47.2	
MATURITY GROUP LSD AT .05				0.6			4.7	
MATURITY GROUP 4								
TERRA EX.450	10- 7	50.5	3.5	--	--	49.9	--	--
FUNK 1J1942	9-27	46.7	2.2	--	--	48.7	--	--
DOUGLAS #	10- 9	47.2	3.0	--	--	48.3	--	--
MCCUBBIN EX.80610	10- 7	55.2	3.7	2.2	--	47.9	51.4	--
MATURITY GROUP AVERAGE	10- 5	49.9	3.1	1.9		48.7	48.5	
MATURITY GROUP LSD AT .05				0.5			NS	

TRIAL AVERAGE	9-29	45.9	2.7	1.5		48.9	47.9	
TRIAL LSD AT .05		3.5	0.9			5.2		

-- DATA NOT AVAILABLE.

** HIGHEST YIELDING VARIETY IN THE MATURITY GROUP OR TRIAL.

* YIELD NOT SIGNIFICANTLY LESS THAN THE HIGHEST YIELDING VARIETY IN THE SAME MATURITY GROUP OR TRIAL.

NS NOT SIGNIFICANT.

CHECK VARIETY.

TABLE 13. PERFORMANCE OF EXPERIMENTAL SOYBEAN VARIETIES EVALUATED NEAR LAREDO ON THE RANDY FOSTER FARM IN 1986.
 PLANTED: 27 MAY 1986. HARVESTED: 29 OCTOBER 1986. PLANTING RATE: 9 SEEDS/FT.

BRAND-VARIETY	1986		LODGING SCORE(1-5)			YIELD (BU/ACRE)		
	MATU- RITY DATE	PLANT HEIGHT (IN)	1986	1985	1984	1986	1985	1984
Maturity Group 2								
FONTANELLE 6161 #	9-22	34.2	2.0	--	--	39.9	--	--
KING CITY-386	9-24	32.5	1.2	--	--	39.1	--	--
MATURITY GROUP AVERAGE	9-23	33.4	1.6			39.5		
Maturity Group 3								
DIAMOND BRAND DX86-1309	9-29	39.5	2.0	--	--	51.4**	--	--
HILL HS 2850	9-23	38.0	2.0	--	--	47.0*	--	--
HILL HS 3200	9-25	40.0	3.0	--	--	45.8	--	--
DIAMOND BRAND DX86-2302	10- 2	37.7	2.7	--	--	45.7	--	--
NAPB EX. 3988	10- 2	37.0	2.0	--	--	44.8	--	--
TERRA EX. 330	9-22	35.2	2.7	--	--	44.1	--	--
PELLA #	9-24	36.5	1.7	--	--	43.1	--	--
DIAMOND BRAND DX86-2303	9-29	33.0	1.0	--	--	42.6	--	--
MCCUBBIN EX. 60518	9-29	39.7	3.0	--	--	41.7	--	--
NAPB EX. 3977	10- 2	35.5	1.7	--	--	41.3	--	--
JACQUES B8636	10- 1	44.0	3.5	--	--	41.3	--	--
SIDWELL SEED BES8633	9-26	36.2	1.2	--	--	40.4	--	--
WILLIAMS 82 #	10- 1	43.2	3.5	--	--	39.0	--	--
RHS EX. 623	9-22	36.2	3.2	--	--	37.2	--	--
MATURITY GROUP AVERAGE	9-28	38.0	2.4			43.2		
Maturity Group 4								
MCCUBBIN EX. 80610	10- 7	45.0	3.5	--	--	44.7	--	--
FUNK 1J1942	9-29	38.0	1.7	--	--	44.0	--	--
TERRA EX. 450	10- 6	44.0	3.5	--	--	43.7	--	--
DOUGLAS #	10- 8	39.0	3.2	--	--	43.1	--	--
MATURITY GROUP AVERAGE	10- 5	41.5	3.0			43.8		

TRIAL AVERAGE	9-29	38.2	2.4			42.9		
L.S.D. AT .05		3.9	0.9			5.3		

-- DATA NOT AVAILABLE.

** HIGHEST YIELDING VARIETY IN THE MATURITY GROUP OR TRIAL.

* YIELD NOT SIGNIFICANTLY LESS THAN THE HIGHEST YIELDING VARIETY IN THE SAME MATURITY GROUP OR TRIAL.

NS NOT SIGNIFICANT.

CHECK VARIETY.

TABLE 14. PERFORMANCE OF EXPERIMENTAL SOYBEAN VARIETIES EVALUATED NEAR NOVELTY ON THE GREENLEY MEMORIAL CENTER DURING 1984-86.
PLANTED: 2 JUNE 1986. HARVESTED: 12 NOVEMBER 1986. PLANTING RATE: 9 SEEDS/FT.

BRAND-VARIETY	1986		LODGING SCORE(1-5)			YIELD (BU/ACRE)		
	PLANT DATE	HEIGHT (IN)	1986	1985	1984	1986	1985	1984
MATURITY GROUP 2								
KING CITY-386	9-12	42.0	1.3	--	--	36.2**	--	--
FONTANELLE 6161 #	9- 9	37.3	1.6	1.0	1.0	32.4*	32.7	16.6**
MATURITY GROUP AVERAGE	9-11	39.7	1.4	1.3	1.0	34.3	35.6	16.5
MATURITY GROUP LSD AT .05				NS			NS	NS
MATURITY GROUP 3								
DIAMOND BRAND DX86-2302	9-20	40.0	1.0	--	--	33.7*	--	--
TERRA EX.330	9-12	38.6	1.0	--	--	33.2*	--	--
HILL HS 2850	9-13	38.6	1.0	1.2	--	31.6*	38.1**	--
DIAMOND BRAND DX86-2303	9-15	38.0	1.0	--	--	30.4	--	--
NAPB EX.3977	9-20	39.3	1.0	--	--	29.3	--	--
DIAMOND BRAND DX86-1309	9-15	46.0	1.3	--	--	29.3	--	--
JACQUES E8636	9-18	48.6	1.6	--	--	29.1	--	--
PELLA #	9-11	42.0	1.3	--	--	28.4	--	--
RHS EX.623	9-11	39.3	1.0	--	--	28.4	--	--
SIDWELL SEED BES8633	9-15	40.6	1.3	--	--	28.2	--	--
MCCUBBIN EX.60518	9-16	44.6	1.6	2.5	--	27.0	37.7	--
NAPB EX.3988	9-17	40.0	1.0	--	--	26.3	--	--
HILL HS 3200	9-11	38.6	1.0	1.5	--	26.3	36.1	--
WILLIAMS 82 #	9-18	44.6	1.3	1.2	1.0	26.0	34.3	19.1*
MATURITY GROUP AVERAGE	9-15	41.3	1.2	1.8	1.0	29.0	36.1	18.3
MATURITY GROUP LSD AT .05				0.7			NS	3.3
MATURITY GROUP 4								
MCCUBBIN EX.80610	9-22	47.3	2.0	2.5	--	33.4*	35.9	--
FUNK 1J1942	9-18	43.3	1.6	--	--	31.3*	--	--
TERRA EX.450	9-22	48.0	1.6	--	--	29.7	--	--
DOUGLAS #	9-22	42.6	2.0	--	--	28.8	--	--
MATURITY GROUP AVERAGE	9-21	45.3	1.8	2.2	1.0	30.8	38.5	17.6
MATURITY GROUP LSD AT .05				0.7			NS	4.2
TRIAL AVERAGE	9-16	41.9	1.3	1.8	1.0	29.9	36.8	18.0
TRIAL LSD AT .05		3.7	0.6			5.0		

TABLE 15. PERFORMANCE OF EXPERIMENTAL SOYBEAN VARIETIES EVALUATED AT THREE NORTH MISSOURI LOCATIONS (BARNARD, LAREDO AND NOVELTY) DURING 1986.
PLANTING RATE: 9 SEEDS/FT.

BRAND-VARIETY	LODGING SCORE(1-5)				YIELD (BU/ACRE)			
	BARNARD	LAREDO	NOVELTY	MEAN	BARNARD	LAREDO	NOVELTY	MEAN
MATURITY GROUP 2								
KING CITY-386	2.0	1.2	1.3	1.5	50.9	39.1	36.2**	42.0
FONTANELLE 6161 #	2.0	2.0	1.6	1.8	47.3	39.9	32.4*	39.8
MATURITY GROUP AVERAGE	2.0	1.6	1.4	1.6	49.1	39.5	34.3	41.0
MATURITY GROUP 3								
DIAMOND BRAND DX86-2302	2.5	2.7	1.0	2.0	58.6**	45.7	33.7*	46.0**
DIAMOND BRAND DX86-1309	2.7	2.0	1.3	2.0	53.1	51.4**	29.3	44.6*
TERRA EX.330	3.5	2.7	1.0	2.4	51.1	44.1	33.2*	42.8
HILL HS 2850	3.0	2.0	1.0	2.0	49.6	47.0*	31.6*	42.7
DIAMOND BRAND DX86-2303	2.2	1.0	1.0	1.4	49.8	42.6	30.4	40.9
PELLA #	1.7	1.7	1.3	1.5	50.1	43.1	28.4	40.5
NAPB EX.3988	2.0	2.0	1.0	1.6	49.6	44.8	26.3	40.2
HILL HS 3200	3.0	3.0	1.0	2.3	46.4	45.8	26.3	39.5
MCCUBBIN EX.60518	3.2	3.0	1.6	2.6	49.5	41.7	27.0	39.4
JACQUES E8636	3.7	3.5	1.6	2.9	47.6	41.3	29.1	39.3
NAPB EX.3977	1.7	1.7	1.0	1.4	45.8	41.3	29.3	38.8
SIDWELL SEED BES8633	3.0	1.2	1.3	1.8	44.4	40.4	28.2	37.6
RHS EX.623	3.0	3.2	1.0	2.4	46.3	37.2	28.4	37.3
WILLIAMS 82 #	3.2	3.5	1.3	2.6	43.7	39.0	26.0	36.2
MATURITY GROUP AVERAGE	2.7	2.4	1.2	2.1	48.9	43.2	29.0	40.4
MATURITY GROUP 4								
MCCUBBIN EX.80610	3.7	3.5	2.0	3.0	47.9	44.7	33.4*	42.0
FUNK 1J1942	2.2	1.7	1.6	1.8	48.7	44.0	31.3*	41.3
TERRA EX.450	3.5	3.5	1.6	2.8	49.9	43.7	29.7	41.1
DOUGLAS #	3.0	3.2	2.0	2.7	48.3	43.1	28.8	40.0
MATURITY GROUP AVERAGE	3.1	3.0	1.8	2.6	48.7	43.8	30.8	41.1
TRIAL AVERAGE	2.7	2.4	1.3	2.1	48.9	42.9	29.9	40.6
TRIAL LSD AT .05	0.9	0.9	0.6	0.5	5.2	5.3	5.0	2.8

-- DATA NOT AVAILABLE.

** HIGHEST YIELDING VARIETY IN THE MATURITY GROUP OR TRIAL.

* YIELD NOT SIGNIFICANTLY LESS THAN THE HIGHEST YIELDING VARIETY IN THE SAME MATURITY GROUP OR TRIAL.

NS NOT SIGNIFICANT.

CHECK VARIETY.

TABLE 16. PERFORMANCE OF EXPERIMENTAL SOYBEAN VARIETIES EVALUATED NEAR MARSHALL ON THE FRANK SWISHER FARM DURING 1984-86.
PLANTED: 7 MAY 1986. HARVESTED: 21 OCTOBER 1986. PLANTING RATE: 9 SEEDS/FT.

BRAND-VARIETY	1986		LODGING SCORE(1-5)			YIELD (BU/ACRE)		
	MATU- RITY DATE	PLANT HEIGHT (IN)	1986	1985	1984	1986	1985	1984
	MATURITY GROUP 3							
CUMBERLAND 332	9-15	43.2	5.0	--	--	71.9*	--	--
RHS EX.623	9- 4	43.5	2.5	--	--	65.7	--	--
WILLIAMS 82 #	9-17	48.7	3.5	2.5	2.0	63.1	46.8	39.1
PELLA #	9- 5	44.5	2.0	--	--	62.5	--	--
GOLDEN ACRES 8350-A	9- 3	37.0	2.0	--	--	56.3	--	--
MATURITY GROUP AVERAGE	9- 9	43.4	3.0	2.9		63.9	49.4	
MATURITY GROUP 4								
C1657	9-16	53.2	3.7	--	--	75.2**	--	--
DOUGLAS #	9-18	47.5	3.2	--	--	72.3*	--	--
TERRA EX.450	9-18	55.0	4.2	--	--	69.3*	--	--
RHS EX.614	9-28	50.0	3.2	--	--	69.1*	--	--
C1653	9-20	49.7	3.0	--	--	69.0*	--	--
83-1004	9-25	51.0	2.7	--	--	68.8*	--	--
FUNK 2EO447	9-17	43.5	4.2	--	--	67.7*	--	--
S81-2203	9-26	53.0	4.5	--	--	66.8	--	--
DOUBLE SS EX.45	9-20	48.7	3.7	--	--	66.0	--	--
S82-1044	9-24	52.0	2.7	--	--	64.7	--	--
GOLDEN ACRES 8450-A	9-18	48.7	3.2	--	--	61.5	--	--
JACQUES E8644	9-19	48.2	2.7	--	--	61.4	--	--
JMS EX.427	9-27	55.2	3.5	--	--	60.1	--	--
MATURITY GROUP AVERAGE	9-21	50.4	3.4	3.3		67.0	50.8	
TRIAL AVERAGE	9-18	48.4	3.3	3.0	2.8	66.1	50.1	39.9
TRIAL LSD AT .05		3.5	0.8	NS		8.2		

TABLE 17. PERFORMANCE OF EXPERIMENTAL SOYBEAN VARIETIES EVALUATED NEAR LAMAR ON THE WALLY NORTON FARM DURING 1985-86.
PLANTED: 2 MAY 1986. HARVESTED: 30 OCTOBER 1986. PLANTING RATE: 9 SEEDS/FT.

BRAND-VARIETY	1986		LODGING SCORE(1-5)			YIELD (BU/ACRE)		
	MATU- RITY DATE	PLANT HEIGHT (IN)	1986	1985	1984	1986	1985	1984
	MATURITY GROUP 4							
S79-4296	9-15	36.7	3.0	1.5	--	38.1*	28.7	--
S82-1443	9-16	28.0	2.0	--	--	33.1*	--	--
S83-1004	8-30	32.0	1.0	--	--	32.7*	--	--
S82-1044	8-30	30.0	1.0	--	--	28.3	--	--
DOUGLAS #	8-28	29.0	1.0	1.0	--	27.2	33.9	--
S81-2203	9- 6	31.5	1.5	--	--	26.8	--	--
UNION 134	8-20	32.0	2.0	--	--	25.1	--	--
MATURITY GROUP AVERAGE	9- 3	31.3	1.6	1.5		30.1	34.3	
MATURITY GROUP LSD AT .05				0.6			3.7	
MATURITY GROUP 5								
FORREST #	9-24	31.5	2.5	--	--	38.9**	--	--
CR CO 80R-49	9-18	25.7	2.0	--	--	34.5*	--	--
SM85-2807	10- 2	37.5	4.2	--	--	34.3*	--	--
ESSEX #	9-14	26.0	2.0	1.2	--	30.9*	36.4**	--
MATURITY GROUP AVERAGE	9-22	30.2	2.7	1.2		34.6	33.5	
MATURITY GROUP LSD AT .05				NS			NS	
TRIAL AVERAGE	9- 6	30.5	1.8	1.3		31.8	33.3	
L.S.D. AT .05		3.4	0.7			9.1		

-- DATA NOT AVAILABLE.

** HIGHEST YIELDING VARIETY IN THE MATURITY GROUP.

* YIELD NOT SIGNIFICANTLY LESS THAN THE HIGHEST YIELDING VARIETY IN THE SAME MATURITY GROUP.

NS NOT SIGNIFICANT.

CHECK VARIETY.

TABLE 18. PERFORMANCE OF EXPERIMENTAL SOYBEAN VARIETIES EVALUATED NEAR ESSEX ON THE LANCE CANNON FARM IN 1986 AND NEAR PARMA ON THE CLUADE KEASLER FARM DURING 1984-85.
 PLANTED: 6 MAY 1986. HARVESTED: 17 OCTOBER 1986. PLANTING RATE: 9 SEEDS/FT.

BRAND-VARIETY	1986		LODGING SCORE(1-5)			YIELD (BU/ACRE)		
	MATU- RITY DATE	PLANT HEIGHT (IN)	1986	1985	1984	1986	1985	1984
Maturity Group 4								
UNION 134	9-19	28.5	1.7	--	--	37.6	--	--
DOUGLAS #	9-23	27.2	1.5	--	--	37.0	--	--
S82-1044	9-22	30.0	1.7	--	--	36.7	--	--
S82-1443	9-24	25.0	1.2	--	--	36.0	--	--
Maturity Group Average	9-22	27.7	1.5	3.5		36.8	29.2	34.3
Maturity Group LSD AT .05				0.9			4.9	9.4
Maturity Group 5								
CR CO 82-824	10- 2	23.7	1.0	1.5	--	54.9**	44.4**	--
CR CO 82-372	10- 9	27.7	1.5	--	--	54.9**	--	--
FORREST #	10- 2	22.7	1.0	1.0	2.7	53.5*	31.8	32.0
FUNK M82-572403	9-29	23.5	1.2	--	--	51.8*	--	--
FUNK M82-572509	9-29	20.7	1.0	--	--	49.7*	--	--
FUNK M82-570127	10- 4	24.5	1.0	--	--	48.4*	--	--
CR CO 80R-49	9-29	17.2	1.0	1.2	--	48.0*	34.5	--
FUNK M82-540103	9-29	18.5	1.0	--	--	47.6*	--	--
HARTZ H81-2173	9-29	17.5	1.2	--	--	44.0	--	--
SM85-2807	10-30	35.0	3.0	--	--	43.4	--	--
ESSEX #	9-24	18.0	2.5	--	--	26.4	--	--
Maturity Group Average	10- 3	22.6	1.4	2.0		47.5	36.0	35.4
Maturity Group LSD AT .05				1.2			7.7	6.1
Maturity Group 6								
HARTZ H79-17006	10- 4	24.0	1.7	--	--	52.0*	--	--
HYPERFORMER HB-2J-E4-6	10-16	23.5	1.2	--	--	50.8*	--	--
TRACY M #	10-16	33.2	3.5	3.7	4.2	49.4*	39.2*	38.7
COKER 6716	10-16	28.5	1.0	1.7	--	48.8*	31.1	--
HARTZ H81-9548	10-29	35.0	2.2	--	--	42.0	--	--
CR CO 82M-128	10-16	30.0	2.2	2.7	--	40.4	36.5	--
Maturity Group Average	10-16	29.0	2.0	2.6		47.2	35.1	39.6
Maturity Group LSD AT .05				1.1			6.9	5.2
Trial Average								
Trial Average	10- 5	25.4	1.5	2.4	3.1	45.3	34.5	36.1
Trial LSD AT .05		5.3	0.9			8.0		

-- DATA NOT AVAILABLE.

** HIGHEST YIELDING VARIETY IN THE MATURITY GROUP OR TRIAL.

* YIELD NOT SIGNIFICANTLY LESS THAN THE HIGHEST YIELDING VARIETY IN THE SAME MATURITY GROUP OR TRIAL.

CHECK VARIETY.

TABLE 19. PERFORMANCE OF EXPERIMENTAL SOYBEAN VARIETIES EVALUATED NEAR PORTAGEVILLE ON THE DELTA RESEARCH CENTER DURING 1985-86.
 PLANTED: 7 MAY 1986. HARVESTED: 16 OCTOBER 1986. PLANTING RATE: 9 SEEDS/FT.

BRAND-VARIETY	1986		LODGING SCORE(1-5)			YIELD (BU/ACRE)		
	MATU- RITY DATE	PLANT HEIGHT (IN)	1986	1985	1984	1986	1985	1984
MATURITY GROUP 4								
UNION 134	9-10	23.7	1.0	--	--	32.5	--	--
S82-1044	9-13	21.5	1.0	--	--	29.5	--	--
DOUGLAS #	9-23	17.7	1.0	--	--	28.3	--	--
S82-1443	9-25	16.0	1.0	--	--	23.0	--	--
MATURITY GROUP AVERAGE	9-18	19.7	1.0	1.9		28.3	26.8	
MATURITY GROUP LSD AT .05				NS			5.9	
MATURITY GROUP 5								
CR CO 82-372	10- 5	21.2	1.0	--	--	47.1*	--	--
FORREST #	10- 3	18.7	1.0	1.5	--	42.9*	38.9*	--
FUNK M82-570127	10- 3	21.7	1.0	--	--	42.3*	--	--
HARTZ H81-2173	10- 1	17.5	1.0	--	--	40.8*	--	--
FUNK M82-572403	9-30	20.5	1.0	--	--	39.0	--	--
CR CO 82-824	10- 2	19.5	1.0	1.0	--	38.0	39.1*	--
SM85-2807	10-30	32.2	1.0	--	--	35.4	--	--
FUNK M82-572509	10- 1	18.0	1.0	--	--	34.7	--	--
CR CO 80R-49	9-30	15.2	1.0	1.0	--	25.8	24.6	--
FUNK M82-540103	9-29	15.0	1.0	--	--	23.8	--	--
ESSEX #	9-25	14.7	1.2	--	--	19.5	--	--
MATURITY GROUP AVERAGE	10- 1	19.5	1.0	1.4		35.3	34.5	
MATURITY GROUP LSD AT .05				0.7			6.1	
MATURITY GROUP 6								
HYPERFORMER HB-2J-E4-6	10-18	25.5	1.0	--	--	49.0**	--	--
COKER 6716	10-20	23.2	1.0	1.0	--	43.6*	33.2	--
CR CO 82M-128	10-22	26.7	1.0	2.0	--	42.2*	37.1*	--
TRACY M #	10-20	27.2	1.5	2.7	--	40.0	36.8*	--
HARTZ H81-9548	10-29	30.2	1.0	--	--	39.9	--	--
HARTZ H79-17006	10- 5	20.5	1.0	--	--	39.5	--	--
MATURITY GROUP AVERAGE	10-19	25.5	1.1	1.5		42.3	35.5	
MATURITY GROUP LSD AT .05				0.7			6.6	

TRIAL AVERAGE	10- 5	21.2	1.0	1.5		36.0	33.4	
TRIAL LSD AT .05		2.5	0.2			8.5		

-- DATA NOT AVAILABLE.

** HIGHEST YIELDING VARIETY IN THE MATURITY GROUP OR TRIAL.

* YIELD NOT SIGNIFICANTLY LESS THAN THE HIGHEST YIELDING VARIETY IN THE SAME MATURITY GROUP OR TRIAL.

NS NOT SIGNIFICANT.

CHECK VARIETY.

TABLE 20. PERFORMANCE OF EXPERIMENTAL SOYBEAN VARIETIES EVALUATED AT TWO SOUTHEAST MISSOURI LOCATIONS (ESSEX AND PORTAGEVILLE) DURING 1986.
PLANTING RATE: 9 SEEDS/FT.

BRAND-VARIETY	LODGING SCORE(1-5)			YIELD (BU/ACRE)		
	ESSEX	PORTAGEVILLE	MEAN	ESSEX	PORTAGEVILLE	MEAN
Maturity Group 4						
UNION 134	1.7	1.0	1.3	37.6	32.5	35.0
S82-1044	1.7	1.0	1.3	36.7	29.5	33.1
DOUGLAS #	1.5	1.0	1.2	37.0	28.3	32.6
S82-1443	1.2	1.0	1.1	36.0	23.0	29.5
Maturity Group Average	1.5	1.0	1.3	36.8	28.3	32.6
Maturity Group 5						
CR CO 82-372	1.5	1.0	1.2	54.9**	47.1*	51.0**
FORREST #	1.0	1.0	1.0	53.5*	42.9*	48.2*
CR CO 82-824	1.0	1.0	1.0	54.9**	38.0	46.4*
FUNK M82-572403	1.2	1.0	1.1	51.8*	39.0	45.4
FUNK M82-570127	1.0	1.0	1.0	48.4*	42.3*	45.3
HARTZ H81-2173	1.2	1.0	1.1	44.0	40.8*	42.4
FUNK M82-572509	1.0	1.0	1.0	49.7*	34.7	42.2
SM85-2807	3.0	1.0	2.0	43.4	35.4	39.4
CR CO 80R-49	1.0	1.0	1.0	48.0*	25.8	36.9
FUNK M82-540103	1.0	1.0	1.0	47.6*	23.8	35.7
ESSEX #	2.5	1.2	1.8	26.4	19.5	22.9
Maturity Group Average	1.4	1.0	1.2	47.5	35.3	41.4
Maturity Group 6						
HYPERFORMER HB-2J-E4-6	1.2	1.0	1.1	50.8*	49.0**	49.9*
COKER 6716	1.0	1.0	1.0	48.8*	43.6*	46.2*
HARTZ H79-17006	1.7	1.0	1.3	52.0*	39.5	45.7*
TRACY M #	3.5	1.5	2.5	49.4*	40.0	44.7
CR CO 82M-128	2.2	1.0	1.6	40.4	42.2*	41.3
HARTZ H81-9548	2.2	1.0	1.6	42.0	39.9	40.9
Maturity Group Average	2.0	1.1	1.6	47.2	42.3	44.8
Trial Average						
TRIAL AVERAGE	1.5	1.0	1.2	45.3	36.0	40.7
TRIAL LSD AT .05	0.9	0.2	0.4	8.0	8.5	5.4

** HIGHEST YIELDING VARIETY IN THE TRIAL.

* YIELD NOT SIGNIFICANTLY LESS THAN THE HIGHEST YIELDING VARIETY IN THE TRIAL.

CHECK VARIETY.

TABLE 21. CHARACTERISTICS OF SOYBEAN VARIETIES AND BLENDS*.

DESIGNATION	VARIETY OR BLEND	EXPERI-MENTAL VARIETY	MATURITY GROUP	COLOR				CYST NEMATODE	PHYTO-PHTHORA		SENCOR INJURY
				FLOWER	POD	PUBESCENCE	HILUM		ROOT	ROT	
COMMERCIAL VARIETIES OR BLENDS											
AGRIPRO AP 350	V	NO	4	P	BR	G	IBL	S		T	T
AGRIPRO AP 3773	V	NO	3	P	TN	TW	BL	-		T	T
AGRIPRO AP 4321	V	NO	4	P	TN	TW	BL	-		T	T
AGRIPRO GT 1380	V	NO	4	W	BR	G	Y	-		T	T
AMERICANA MARINER	V	NO	2	P	BR	G	Y	S		S	T
AMERICANA RIVAL	V	NO	3	P	BR	BR	GR	S		T	T
AMERICANA SENTRY	V	NO	3	P	BR	BR	BL	S		T	T
AMERICANA ATLANTIS	V	NO	3	W	BR	TN	BL	S		T	T
AMERICANA TAURUS	V	NO	3	P, W	TW	TW	BL	S		T	T
AMERICANA B566	V	NO	4	P	BR	TW	BF	S		T	T
AMERICANA B567	V	NO	4	P	TN	G	BF	S		T	T
ASGROW A3427	V	NO	3	P	TN	TW	BL	S		R	T
ASGROW A3733	V	NO	3	P	TN	TW	BL	S		R	T
ASGROW A3803	V	NO	3	W	TN	TW	BL	S		R	T
ASGROW A3966	V	NO	3	P	TN	TW	BL	S		R	T
ASGROW A4271	V	NO	4	W	TN	TW	BL	S		R	T
ASGROW A4595	V	NO	4	W	TN	TW	BL	S		R	T
ASGROW A5149	V	NO	5	P	TN	TW	BL	S		R	T
ASGROW A5474	V	NO	5	W	BR	TW	BL	R		R	T
ASGROW A5980	V	NO	5	P	TN	TW	BL	R		R	T
ASGROW A6242	V	NO	6	P	BR	TW	BL	R		S	T
BELLATTI B50-253	V	NO	4	W	-	-	Y	-		-	-
BIN-BUSTER 3802	V	NO	3	-	-	-	-	-		-	-
BIN-BUSTER 4250	V	NO	4	-	-	-	-	-		-	-
BRAD 29	V	NO	2	W	TN	G	Y	-		R	-
BRAD 34	V	NO	3	P	BR	BR	BL	-		R	-
BRAD 39	V	NO	3	P	BR	BR	G	-		R	-
BRAD 40	V	NO	3	P	G	G	IBL	-		R	-
CAPEHART NOBLE	V	NO	5	-	-	-	-	-		-	-
COKER 355	V	NO	5	P	BR	TW	BL	R		S	T
COKER 393	V	NO	3	P	TN	TW	BL	S		T	T
COKER 425	V	NO	5	P	TN	TW	BL	S		T	T
COKER 485	V	NO	5	P	TN	TW	BL	S		T	T
COKER 6716	V	YES	6	W	TN	TW	BL	R		R	T
COKER 82-372	V	YES	5	W	TN	TW	BL	R		R	T
COKER 82-824	V	YES	5	W	TN	TW	BL	R		R	T
COKER 80R-49	V	YES	5	P	TN	TW	BL	R		R	T
COKER 82M-128	V	YES	6	P	TN	G	BF	R		-	T
CFS 32	V	NO	3	W	BR	TN	BL	-		T	-
CFS 37	V	NO	3	P	BR	TW	BR	-		T	-
DEKALB-PFIZER CX366	V	NO	3	P	TN	BR	BL	S		R	-
DEKALB-PFIZER CX380	V	NO	3	W	TN	TW	BL	S		T	-
DEKALB-PFIZER CX415	V	NO	4	W	TN	BR	IBL	S		R	-
DEKALB-PFIZER EX655	V	YES	4	-	-	-	-	S		-	-
DELANGE BRAND DS42	V	NO	4	W	TN	G	BF	R		T	-
DELANGE BRAND DS49	V	NO	4	P	TN	BR	BR	R		T	-
DELTAPINE 105	V	NO	5	P	TN	G	IBL	-		T	T
DELTAPINE 415	V	NO	5	W	TN	G	TN	R		T	T
DELTAPINE 566	V	NO	6	W	TN	TN	BL	-		T	T
DELTAPINE 675	V	NO	5	W	TN	TN	BR	R		T	T
DIAMOND BRAND D245	V	NO	3	P	-	G	Y	-		R	T
DIAMOND BRAND D280B	B	NO	3	P, W	-	G	Y	-		T	T
DIAMOND BRAND D315	V	NO	3	W	-	G	BF	-		T	T
DIAMOND BRAND D320B	B	NO	3	P, W	-	TW	BL, BF	-		T	T
DIAMOND BRAND TC204A	V	NO	2	P	-	G	Y	-		T	T
DIAMOND DX86-1309	V	YES	3	W	-	G	BL	S		T	-
DIAMOND DX86-2302	V	YES	3	-	-	-	-	S		-	-
DIAMOND DX86-2303	V	YES	3	-	-	-	-	S		-	-
DOUBLE SS 2900	V	NO	2	W	TN	G	Y	-		S	-
DOUBLE SS 3285	V	NO	3	P	BR	BR	BL	-		S	-
DOUBLE SS 3900	V	NO	3	P	BR	G	IBL	-		S	-
DOUBLE SS EXP-45	V	YES	4	W	BR	BR	BL	-		S	-
FONTANELLE 5708	V	NO	2	W	TW	BR	BL	-		T	-
FONTANELLE 6161	V	NO	2	P	G	G	BR	-		T	-
FONTANELLE 6464	V	NO	3	P	TN	TN	BL	-		T	-
FONTANELLE 6540	V	NO	3	P	BR	BR	BR	-		T	-
FORTUNE 666	V	NO	3	P	BR	BR	BL	-		T	-
FORTUNE 747	V	NO	4	P	BR	BR	IBL	-		T	-
FS HISOY 302	V	NO	3	P	BR	TW	Y	-		S	T
FS HISOY 321	V	NO	3	W	TN	TW	BL	-		R	T
FS HISOY 348	V	NO	3	P	BR	TW	BL	-		R	T
FS HISOY 358	V	NO	3	P	TN	TW	BL	-		R	T
FUNK G3399	B	NO	3	P	M	TN	M	S		S	T

TABLE 21. CONTINUED.

DESIGNATION	VARIETY OR BLEND	EXPERI-MENTAL VARIETY	MATURITY GROUP	COLOR				CYST NEMATODE	PHYTO-PHTHORA		SENCOR INJURY
				FLOWER	POD	PUBESCENCE	HILUM		ROOT	ROT	
FUNK IJ1942	V	YES	3	W	BR	TN	BL	S	R	T	
FUNK 2E0447	V	YES	4	W	BR	G	BF	S	S	T	
FUNK M82-540103	V	YES	5	W	TN	G	BF	S	T	-	
FUNK M82-572403	V	YES	5	W	TN	G	BR	-	R	-	
FUNK M82-572509	V	YES	5	P	TN	G	IBL	S	R	-	
FUNK M82-570127	V	YES	5	-	-	-	-	-	-	-	
GOLDEN ACRES 8350-A	V	NO	3	W	TN	G	BL	-	T	T	
GOLDEN ACRES 8450-A	V	NO	4	W	TN	G	BR	S	T	-	
HARTZ 5171	V	NO	5	W	TN	G	BF	R	T	T	
HARTZ 5252	V	NO	5	P	TN	TW	BL	R	R	T	
HARTZ 5370	V	NO	5	W	TN	TW	BL	R	R	T	
HARTZ 6130	V	NO	6	P	TN	TW	BL	R	R	T	
HARTZ X5164	V	YES	5	W	TN	TW	BL	R	T	T	
HARTZ H79-17006	V	YES	5	W	TN	TW	BL	R	R	T	
HARTZ H81-2173	V	YES	5	W	TN	TW	BL	R	R	T	
HARTZ H81-9548	V	YES	6	P	TN	TW	BL	R	T	T	
HILL HS 4000	B	NO	4	-	-	G	IBL	-	-	-	
HILL HS 4050	B	NO	4	P	-	G	IBL	-	T	T	
HILL HS 4150	B	NO	3	P	BR	G	IBL	-	T	T	
HILL HS 3400	V	NO	2	W	-	TW	BR	-	T	T	
HILL HS 2850	V	YES	2	-	-	G	Y	-	-	-	
HILL HS 3200	V	YES	3	-	-	TW	BR	-	-	-	
HOFLER CORAL	V	NO	3	P	BR	TN	BR	-	T	-	
HOFLER CRYSTAL	V	NO	3	W	BR	TW	BL	-	R	-	
HOFLER GEM	V	NO	2	P	BR	G	Y	-	S	-	
HOFLER JASPER	V	NO	4	P	BR	TN	BR	-	R	-	
HOFLER QUARTZ	V	NO	4	P	BR	TN	BR	-	R	-	
HOFLER SUNSTONE	V	NO	2	P	BR	G	Y	-	S	-	
HYPERFORMER STEVENS	V	NO	4	P	BR	G	BF	-	T	-	
HYPERFORMER SHENANDOAH	V	NO	5	W	BR	G	BR	-	T	-	
HYPERFORMER HB-2JE4-6	V	YES	6	P	-	TW	BL	-	-	-	
JACQUES J-130	V	NO	4	P	BR	G	IBL	S	S	T	
JACQUES J-431	V	NO	4	P	TN	G	G	S	R	T	
JACQUES E 8636	V	YES	3	W	BR	G	BF	S	R	T	
JACQUES E 8644	V	YES	4	P	BR	G	IBL	R	-	T	
JMS 3186	V	NO	3	-	-	-	-	-	-	-	
JMS 3482	V	NO	3	W	BR	TW	BL	S	-	-	
JMS 4383	V	NO	4	W	BR	TW	BR	S	S	-	
JMS 4982	V	NO	4	P	TN	TW	BR	S	S	-	
JMS 5484	V	NO	5	W	-	TW	BL	T	-	-	
JMS EX 427	V	YES	4	-	-	-	-	-	-	-	
JMS EX 512	V	YES	5	-	-	-	-	-	-	-	
KELLER KNOX	V	NO	2	P	BR	G	Y	S	T	-	
KELLER K-924	V	NO	3	P	BR	G	Y	S	T	-	
KELLER K-931	V	NO	5	P	BR	TN	BR	S	T	-	
KING CITY-386	V	YES	2	W	TN	G	Y	-	R	-	
LEWIS 34	V	NO	3	P	BR	TN	TN	S	T	T	
LEWIS 46	V	NO	4	P	TN	TN	BR	S	T	T	
LEWIS 266	V	NO	2	W	TN	TN	BR	S	T	T	
LEWIS 300	V	NO	3	P	BR	G	Y	S	T	T	
LEWIS 465	V	NO	4	P	BR	TN	BR	S	T	T	
LYNKS SEEDS 8380	V	NO	3	P	BR	BR	G	-	T	-	
LYNKS SEEDS 8393	V	NO	3	P	BR	TW	BR	-	T	-	
LYNKS SEEDS 8405	V	NO	4	W	BR	TW	BR	-	T	-	
MASCO 8341	V	NO	2	P	BR	G	Y	S	S	T	
MASCO 8493	V	NO	3	P, W	BR	TW	BR	S	T	T	
MASCO DYNAMO II	V	NO	3	W	BR	TW	BL	-	T	T	
MASCO 8604	V	NO	3	P	BR	G	Y	S	S	T	
MCCUBBIN ALBANY II	V	NO	4	P	TN	TW	BR	-	S	S	
MCCUBBIN TAYLOR	V	NO	2	P	BR	G	Y	-	S	S	
MCCUBBIN TROY	V	NO	3	P	BR	G	IBL	-	S	S	
MCCUBBIN EX 60518	V	YES	3	P	BR	TW	TN	-	S	S	
MCCUBBIN EX 80610	V	YES	4	P	BR	TW	BR	-	S	S	
MERSCHMAN ATLANTA	V	NO	4	W	BR	TW	BR	S	R	T	
MERSCHMAN BOSTON	B	NO	4	P, W	BR	TW	BR	S	T	T	
MERSCHMAN CHEYENNE III	V	NO	2	P	BR	G	Y	S	S	T	
MERSCHMAN DALLAS	V	NO	4	P	TN	G	BF	S	T	T	
MERSCHMAN DENVER II	B	NO	4	P, W	TN, BR	TW, G	BF, BR	S	T	T	
MERSCHMAN EISENHOWER	V	NO	3	W	BR	G	Y, BF	S	R	T	
MERSCHMAN HARRIS	B	NO	4	W	BR, TN	G, TW	Y, BF, BR	S	T	T	
MERSCHMAN HOUSTON	B	NO	4	P, W	BR	G, TW	BR, Y, BF	S	T	T	
MERSCHMAN JEFF. III	B	NO	3	P, W	BR	G, TN	BR, Y	S	T	T	
MERSCHMAN JEFF. IV	B	NO	3	P, W	BR	G, TW	BR, IBL	S	T	T	
MERSCHMAN JEFF. V	B	NO	3	W	BR	TN, TW	BR	S	T	T	
MERSCHMAN KENNEDY	V	NO	3	P	BR	G	IBL	S	R	T	
MERSCHMAN KENNEDY II	V	NO	3	W	BR	TN	BR	S	R	T	
MERSCHMAN MEMPHIS	B	NO	4	W	TN, BR	TW	BR, BL	S	T	T	
MERSCHMAN MONROE	B	NO	3	W	BR	TN, G	BR, Y, BF	S	T	T	

TABLE 21. CONTINUED.

DESIGNATION	VARIETY OR BLEND	EXPERIMENTAL VARIETY	MATURITY GROUP	COLOR				CYST NEMATODE	PHYTO-PHTHORA ROOT ROT	SENCOR INJURY
				FLOWER	POD	PUBESCENCE	HILUM			
MERSCHMAN TRUMAN II	V	NO	3	W	BR	TN	BR	S	T	T
MERSCHMAN WASH. VI	V	NO	3	P,W	TN	TW	BR	S	R	T
MERSCHMAN WILLIAMSBURG	V	NO	4	W	TN	TW	BR	S	R	T
MFA PV42	V	NO	4	P	BR	BR	BR	S	T	T
MIDWEST OILSEEDS 5800	V	NO	5	P	TN	G	BF	-	T	T
NAPB EX 3977	V	YES	3	W	TN	TW	BL	-	T	T
NAPB EX 3988	V	YES	3	W	BR	G	BF	-	T	T
NECO 950	V	NO	3	P	BR	BR	BL	S	T	T
NECO 1000	V	NO	3	P	BR	BR	G	S	T	T
NECO 1350	V	NO	4	W	TN	G	BF	S	T	T
NECO B-4	B	NO	4	P	TN	GR	BF	S	T	T
NORTHROP-KING S39-99	V	NO	3	P	BR	G	G	S	R	T
NORTHROP-KING S42-30	V	NO	4	P	TN	TW	BL	S	T	T
NORTHROP-KING S42-40	V	NO	4	P	TN	TW	BL	S	T	T
OHLDE 3380	V	NO	3	P	TN	BR	BL	S	T	T
OHLDE 4331	V	NO	4	P	TN	BR	BR	S	S	T
OHLDE 4386	V	NO	4	P	TN	BF	BR	S	T	T
PIONEER 5482	V	NO	5	W	BR	TW	BL	S	S	T
PIONEER 9292	V	NO	2	P	TN	G	BF	S	T	R
PIONEER 9361	V	NO	3	W	TN	TW	BL	S	T	T
PIONEER 9441	V	NO	4	W	TN	TW	BL	S	T	T
PIONEER 9471	V	NO	4	W	TN	TW	BL	S	T	T
PIONEER 9531	V	NO	5	P	-	TW	BL	S	T	T
PIONEER 9541	V	NO	5	P	TN	G	BF	S	T	R
PIONEER 9571	V	NO	5	W	BR	TW	BL	S	T	-
PIONEER 9581	V	NO	5	W	TN	TW	BL	R	T	-
PRIZE 622	V	NO	3	-	-	-	-	-	-	-
PRIZE 623	V	NO	3	-	-	-	-	-	-	-
PRIZE 818	V	NO	4	-	-	-	-	-	-	-
PRIZE 828	V	NO	4	-	-	-	-	-	-	-
PRAIRIE BRAND 373	V	NO	3	P	TN	G	BF	-	T	-
PRAIRIE BRAND GALAXY	V	NO	3	W	BR	TW	BL	-	T	-
RANDELL HAWK	V	NO	3	P	TN	BR	IBL	-	T	T
RANDELL MAHASKA	V	NO	2	P	TN	TW	BL	-	R	T
RANDELL 3030	V	NO	3	-	TN	BR	-	-	-	-
RANDELL 3040	V	NO	3	P	BR	G	IBL	-	T	-
RAY-CARROLL CARROLL	V	NO	3	P	BR	TW	BR	-	T	-
RAY-CARROLL CHARITON	V	NO	4	P	TN	G	BF	-	S	-
RAY-CARROLL LAFAYETTE	V	NO	4	P	BR	TW	BR	-	S	-
RAY-CARROLL NORBORNE	V	NO	2	P	BR	G	Y	-	S	-
RAY-CARROLL RAY	V	NO	4	P	BR	TW	TN	-	T	-
RAY-CARROLL RAY 2	V	NO	4	P	BR	TW	BR	-	T	-
REEDS 222	V	NO	2	P	BR	G	Y	S	S	-
REEDS 320	V	NO	3	P	BR	BR	BL	S	S	-
REEDS 330	V	NO	3	P	BR	TW	BR	S	S	-
REEDS 333	V	NO	3	P	BR	G	BL	S	S	-
REEDS 390	V	NO	3	W	TN	BR	TW	S	S	-
REEDS 440	V	NO	4	P	TN	TN	BL	S	S	-
REEDS 444	V	NO	4	P	TN	G	BF	S	S	-
REEDS 460	V	NO	4	W	BR	G	BF	S	S	T
RHS 6592	V	NO	2	W	BR	G	Y	-	T	T
RHS EX614	V	YES	4	P	BR	G	BF	-	R	T
RHS EX623	V	YES	3	P	TN	TW	BL	-	T	T
RING AROUND RA 303	V	NO	3	P	BR	G	Y	S	S	T
RING AROUND RA 404	V	NO	4	P	BR	BR	BR	S	S	T
RING AROUND RA 451	V	NO	4	P	BR	BR	BL	S	S	T
RING AROUND RA 452	V	NO	4	W	BR	G	BF	S	S	T
RING AROUND RA 480	V	NO	4	P	TN	TW	BL	R	R	T
RING AROUND RA 606	V	NO	6	W	TN	G	BF	R	R	T
S-BRAND S-48C	B	NO	2	P	-	G	Y	S	-	T
S-BRAND S-58A	V	NO	3	W	BR	G	Y	S	T	T
S-BRAND S-60H	V	NO	3	P	-	G	IBL, BF	S	-	T
S-BRAND S-62	V	NO	3	P	-	G	GR	S	-	T
S-BRAND S-64A	V	NO	3	P	-	G	IBL	S	-	T
S-BRAND S-67	B	NO	4	P,W	-	TN	BR	S	-	T
SHISSLER GR8 388	V	NO	3	P	BR	BR	G	S	T	-
SHISSLER GR8 420	V	NO	4	W	BR	TN	BR	S	S	T
SIDWELL BES 8633	V	YES	3	P	BR	BR	BL	-	T	-
SILER SS 325	B	NO	3	P,W	BR	TW	BL	-	T	-
SILER SS 335	B	NO	3	P	TN	G	G	-	T	-
SRF 250	V	NO	2	W	BR	G	Y	S	S	T
SRF 307P	V	NO	3	W	BR	TW	BR	S	S	T
SRF 350P	V	NO	3	W	BR	TW	BL	S	S	T

TABLE 21. CONTINUED.

DESIGNATION	VARIETY OR BLEND	EXPERI-MENTAL VARIETY	MATURITY GROUP	COLOR				CYST NEMATODE	PHYTO-PHTHORA ROOT ROT	SENCOR INJURY
				FLOWER	POD	PUBESCENCE	HILUM			
SRF 390	V	NO	3	W	BR	TW	BR	S	R	S
SRF 425	V	NO	4	W	BR	TW	BL	SS	R	SS
SRF 450P	V	NO	4	P	BR	TW	BL	SS	R	SS
SRF MATSOY	V	NO	3	P	BR	G	Y	S	S	S
STINE 3500	V	NO	3	P	BR	G	Y	-	S	-
STINE 3790	V	NO	3	P, W	TN	TW	BR	S	S	-
STINE 4190	V	NO	4	P	TN	G	BF	SS	S	-
STINE 4740	B	NO	4	P, W	BR, TN	TW	BR	-	T	-
STINE 4770	V	NO	4	P	BR	TW	BR	-	T	-
STINE 4780	B	NO	4	P	TN, BR	G, TW	BF, BR	-	T	-
TERRA ADVANCE	V	NO	3	P	G	BR	Y	-	S	T
TERRA COMPETITOR	V	NO	4	P	G	TN	BF	-	SS	T
TERRA TRIUMPH	V	NO	3	P, W	TN	BR	BR	-	SS	T
TERRA EXP 330	V	YES	3	W	TN	BR	BL	-	SS	T
TERRA EXP 450	V	YES	4	P	TN	BR	BR	-	S	T
WILSON BLEND 3182	V	NO	3	P	BR	G	Y	S	T	T
WILSON BLEND 3560	V	NO	3	-	-	-	-	-	-	-
YIELD KING 503	V	NO	5	P	TN	TW	BL	S	T	T
YIELD KING 577	V	NO	5	W	TN	G	BF	R	-	T
YIELD KING 593	V	NO	6	P	TN	TW	BL	R	R	T
YIELD KING 613	V	NO	6	P	TN	TW	BR	R	R	T
<u>PUBLIC VARIETIES</u>										
CENTURY 84	V	NO	2	P	BR	TW	BL	S	R	-
CHAMBERLAND	V	NO	3	P	BR	G	IBL	S	R	-
FAYETTE	V	NO	3	W	TN	TW	BL	R	S	-
HARPER	V	NO	3	P	TN	BR	BL	-	-	-
HOBBIT	V	NO	3	W	TN	TW	BL	SS	S	-
PELLA	V	NO	3	P	TN	TW	BL	SS	R	-
PELLA 86	V	NO	3	P	TN	TW	BL	R	R	T
PRESTON	V	NO	3	P	BR	TW	G	-	T	-
SHERMAN	V	NO	3	W	BR	G	BF	S	S	-
WILLIAMS	V	NO	3	W	TN	TW	BL	SS	S	-
WILLIAMS 82	V	NO	3	W	TN	TW	BL	SS	R	-
WINCHESTER	V	NO	3	W	TN	BR	BL	SS	R	-
ZANE	V	NO	3	P	BR	G	IBL	-	T	-
CRAWFORD	V	NO	4	P	BR	TW	BL	S	R	-
DESOTO	V	NO	4	P	BR	TW	BL	SS	R	-
DOUGLAS	V	NO	4	W	BR	TW	BL	SS	R	-
PERSHING	V	NO	4	W	TN	G	BF	SS	-	-
PIXIE	V	NO	4	P	TN	TW	BL	SS	S	-
RIPLEY	V	NO	4	P	TN	G	BF	SS	R	-
SPARKS	V	NO	4	W	TN	TW	BL	S	R	-
UNION	V	NO	4	W	TN	TN	BL	S	R	-
BAY	V	NO	5	P	TW	G	BF	S	S	-
BEDFORD	V	NO	5	W	TN	BR	BL	S	T	-
ESSEX	V	NO	5	P	TN	G	BF	S	S	-
EPPS	V	NO	5	P	-	G	IBL	-	R	-
FORREST	V	NO	5	W	TN	TW	BR	R	R	-
MACK	V	NO	5	P	TM	G	-	R	-	-
NATHAN	V	NO	5	W	TN	BR	BL	R	S	-
BRADLEY	V	NO	6	W	-	TW	BL	R	-	-
CENTENNIAL	V	NO	6	P	-	TW	BL	R	R	-
DAVIS	V	NO	6	W	TW	G	BF	S	-	-
TRACY M	V	NO	6	W	TN	TW	BL	S	R	-
<u>PUBLIC BREEDING LINES</u>										
C-1653	V	YES	2	-	-	-	-	-	-	-
C-1657	V	YES	2	-	-	-	-	-	-	-
CUMBERLAND 332	V	YES	3	P	BR	G	IBL	S	R	-
UNION 134	V	YES	4	W	TN	TN	BL	S	R	-
SM85-2807	V	YES	4	-	-	-	-	-	-	-
S79-4259	V	YES	4	W	-	TW	BL	R	-	-
S79-4296	V	YES	4	W	-	TW	IBL	R	-	-
S80-2959	V	YES	4	W	-	TW	IBL	R	-	-
S81-2203	V	YES	4	P	-	TW	BL	R	-	-
S82-1044	V	YES	4	W	-	G	BR	R	-	-
S82-1443	V	YES	4	P	-	TW	BR	R	-	-
S83-1004	V	YES	4	W	-	G	BR	R	-	-

* DATA WERE PROVIDED BY COMPANIES ON ENTRY FORMS.
 - DATA NOT AVAILABLE.

COLOR CODES
 BF - BUFF
 BL - BLACK
 BR - BROWN
 G - GRAY
 GR - GREEN
 IBL - IMPERFECT BLACK
 M - MIXED
 P - PURPLE
 TN - TAN
 TW - TAWNY
 Y - YELLOW

DISEASE CODES
 R - RESISTANT
 T - TOLERANT
 S - SUSCEPTIBLE

HERBICIDE CODES
 T - TOLERANT
 S - SUSCEPTIBLE

TABLE 22. NAMES OF SOYBEAN ENTRIES EVALUATED IN 1986 AND THEIR SEED SOURCES.

BRAND	VARIETY/BLEND	SEED SOURCE
AGRIPRO	AP 350, AP 3773, AP 4321, GT 1380	AGRIPRO SEEDS, RT 2, HWY. 30 EAST, AMES, IA 50010
AMERICANA	ATLANTIS, MARINER, RIVAL, SENTRY, TAURUS, B566, B567	AMERICANA SEEDS, INC., BOX 275, BOWEN, IL 62316
ASGROW	A3427, A3733, A3803, A3966, A4271, A4595, A5149, A5474, A5980, A6242	ASGROW SEED CO., 7000 PORTAGE ROAD, KALAMAZOO, MI 49001
BELLATTI	B50-253	BELLATTI SOYBEANS, RT 2, MT. PULASKI, IL 62548
BIN-BUSTER	3802, 4250	HIDY SEED CO., RT 2, BOX 36, STEWARTSVILLE, MO 64490
BRAD	29, 34, 39, 40	BRADLEY SEED SERVICE, INC., RT 1, LEONARD, MO 63451
CAPEHART	NOBLE	CAPEHART SEED SERVICE, BOX 10, HOLLAND, MO 63853
CFS	32, 37	CUSTOM FARM SEED, BOX 160, MOMENCE, IL 60954
COKER	393, 355, 425, 485, 6716	ROHM AND HAAS SEEDS, INC., BOX 2629, 406 WOODS, WEST MEMPHIS, AR 72301
CR	C082M-128, C082-824, C080R-49, C082-372	C.R. SEEDS, HWY. 158 E., BOX 729, BAY, AR 72411
DEKALB-PFIZER	CX380, CX415, CX366, EX655	DEKALB-PFIZER GENETICS, 3100 SYCAMORE RD, DEKALB, IL 60115
DeLANGE BRAND	DS42, DS49	DeLANGE SEED HOUSE, INC., BOX 7, GIRARD, KS 66743
DELTAPINE	105, 566, 675, 415	DELTA & PINE LAND CO., BOX 157, SCOTT, MS 38772
DIAMOND BRAND	D245, D280B, D315, D320B, TC204A, DX86-1309, DX86-2302, DX86-2303	DIAMOND BRAND SEEDS, 1127 PLAZA DR., CARROLL, IA 51401
DOUBLE SS	2900, 3285, 3900, EXP-45	SHELTON SEED, RT 2, BOX 237, CENTRALIA, MO 65240
FONTANELLE	5708, 6161, 6464, 6540	FONTANELLE HYBRIDS, RT 1, NICKERSON, NE 68044
FORTUNE	666, 747	MID-STATE WAREHOUSE & STORAGE, INC., BOX 126, MARSHALL, MO 65340
FS HISOY BRAND	HS 302, HS 321, HS 348, HS 358	GROWMARK, INC., 1701 TOWANDA AVE., BLOOMINGTON, IL 61761
FUNK'S	G3399, 1J1942, 2E0447, M82-540103, M82-572403, M82-572509, M82-570127	FUNK SEEDS INTERNATIONAL, 1300 WEST WASHINGTON, BLOOMINGTON, IL 61702
GOLDEN ACRES	GA 8450-A, GA 8350-A	TAYLOR-EVANS SEED CO., BOX 68, TULIA, TX 79088
HARTZ	5171, 5252, 5370, 6130, X5164, H79-17006, H81-2173, H81-9548	JACOB HARTZ SEED CO., INC., BOX 946, STUTTGART, AR 72160
HILL HS	2850, 3200, 4000, 3400, 4050, 4150	HILL SEED CO., BOX 1, JEWELL, IA 50130
HOFLER	CORAL, CRYSTAL, GEM, JASPER, QUARTZ, SUNSTONE	HOFLER SEED CO., INC., 17 3RD ST. S.W., NORA SPRINGS, IA 50458
HYPERFORMER BRAND	STEVENS, SHENANDOAH, HB-2J-E4-6	HYPERFORMER SEED CO., 5100 POPLAR, SUITE 3200, MEMPHIS, TN 38137
JACQUES	J-130, J-431, E 8636, E 8644	JACQUES SEED CO., 720 ST. CROIX, PRESCOTT, WI 54021
JMS	3186, 3482, 4383, 4982, 5484, EX 427, EX 512	J. M. SCHULTZ SEED CO., 105 N. PINE STREET, DIETERICH, IL 62424
KELLER	KNOX, K-924, K-931	GEORGE KELLER & SONS CO., 909 MAINE ST., BOX 490, QUINCY, IL 62306
KING CITY	KC-386	KING CITY SEED & STORAGE, INC., HWY 169 N., BOX 666, KING CITY, MO 64463
LEWIS	34, 46, 266, 300, 465	LEWIS HYBRIDS, INC., BOX 38, W. MAPLE ST., URSA, IL 62376
LYNKS SEEDS	8380, 8393, 8405	LYNKS SEEDS, BOX 637, MARSHALLTOWN, IA 50158
MASCO	8341, 8493, 8604, DYNAMO II	McALLISTER SEED CO., INC., BOX 28, MT. PLEASANT, IA 52641
McCUBBIN	ALBANY II, TAYLOR, TROY, EX 60518, EX 80610	McCUBBIN SEED FARM, INC., BOX 578, GREEN MOUNTAIN, IA 50637
MERSCHMAN	ATLANTA, BOSTON, CHEYENNE III, DALLAS, DENVER II, EISENHOWER, HARRIS, HOUSTON, JEFFERSON III, JEFFERSON IV, JEFFERSON V, KENNEDY, KENNEDY II, MEMPHIS, MONROE, TRUMAN II, WASHINGTON VI, WILLIAMSBURG	MERSCHMAN, INC., 103 AVENUE D., WEST POINT, IA 52656

TABLE 22. CONTINUED

BRAND	VARIETY/BLEND	SEED SOURCE
MFA	PV42	ROHM & HAAS SEEDS, INC., BOX 507, LEBANON, IN 46052
MIDWEST OILSEEDS	5800	MIDWEST OILSEEDS, RT 3, BOX 204, ADEL, IA 50003
NAPB	EX3977, EX3988	AGRIPRO SEEDS, RT 2, HWY. 30 EAST, AMES, IA 50010
NECO	950, 1000, 1350, B-4	NECO SEED FARMS, INC., RT 2, BOX 296D, GARDEN CITY, MO 64747
NORTHRUP KING	S39-99, S42-30, S42-40	NORTHRUP KING CO., 3403 HOOVER AVE., AMES, IA 50010
OHLDE	3380, 4331, 4386	OHLDE SEED FARMS, BOX 63, PALMER, KS 66962
PIONEER	9292, 9361, 9441, 9471, 9541	PIONEER HI-BRED INT., INC., 7000 PIONEER PARKWAY, JOHNSTON, IA 50131
PIONEER VARIETY	5482, 9531, 9571, 9581	PIONEER HI-BRED INT., INC., EASTERN DIVISION, 1000 WEST JEFFERSON ST., TIPTON, IN 46072
PRAIRIE BRAND	GALAXY, 373	PRAIRIE BRAND SEEDS, INC., RT 1, BOX 201, GOWRIE, IA 50543
PRIZE	622, 623, 818, 828	HARTZLER'S SEED CO., RT 1, BOX 458, HARRISONVILLE, MO 64701
RANDELL	MAHASKA, HAWK, RR 3030, RR 3040	RANDELL SEED CO., 714 1ST AVE. E., OSKALOOSA, IA 52577
RAY-CARROLL	CARROLL, CHARITON, LAFAYETTE, NORBORNE, RAY, RAY 2	RAY-CARROLL COUNTY GRAIN GROWERS, INC., E. SANTA FE, BOX 267, NORBORNE, MO 64668
REEDS	222, 320, 330, 333, 390, 440, 444, 460	REEDS SEEDS, INC., 1035 INDUSTRIAL RD., BOX 130, CHILLICOTHE, MO 64601
RHS	6592, EX 623, EX 614	ROHM & HAAS SEEDS, INC., BOX 507, LEBANON, IN 46052
RING AROUND	RA303, RA404, RA451, RA452, RA480, RA606	ROHM & HAAS SEEDS, INC., BOX 507, LEBANON, IN 46052
S BRAND	S-48C, S-58A, S-60H, S-62, S-64A, S-67	SCHECHINGER SEED CO., RT 1, HARLAN, IA 51537
SHISSLER	GR8 388, GR8 420	SHISSLER SEED CO., RT 3, ELMWOOD, IL 61529
SIDWELL SEED	BES 8633	SIDWELL SEED, RT 1, QUEEN CITY, MO 63561
SILER SEED	SS 325, SS 335	SILER SEED, RT 2, BOX 200, WESTON, MO 64098
SRF	250, 307P, 350P, 390, 425, 450P, MATSOY	SOYBEAN RESEARCH FOUNDATION, INC., 115 N. PERRY ST., MASON CITY, IL 62664
STINE	3500, 3790, 4190, 4740, 4770, 4780	STINE SEED FARM, RT 3, BOX 204, ADEL, IA 50003
TERRA	ADVANCE, COMPETITOR, TRIUMPH, EXP 330, EXP 450	TERRA SEED CO., 600 4TH ST., SIOUX CITY, IA 71200
WILSON BLEND	3182, 3560	WILSON HYBRIDS, INC., BOX 391, HARLAN, IA 51537
YIELD KING	503, 577, 593, 613	RIVERSIDE/TERRA, BOX 171376, MEMPHIS, TN 38187
	S79-4259, S79-4296, S80-2959, S81-2203, S82-1044, S82-1443, S83-1004	DR. SAM ANAND, UMC DELTA CENTER, BOX 160, PORTAGEVILLE, MO 63873
	SM85-2807	DR. HARRY MINOR, 214 WATERS HALL, UMC, COLUMBIA, MO 65211
	BAY, BEDFORD, BRADLEY, CENTURY 84, CENTENNIAL, CRAWFORD, CHAMBERLAND, CUMBERLAND 332, DAVIS, DESOTO, DOUGLAS, EPPS, ESSEX, FAYETTE, FORREST, HARPER, HOBBIT, LAWRENCE, MACK, NATHAN, PELLA, PELLA 86, PERSHING, PIXIE, PRESTON, RIPLEY, SPARKS, SPRITE, SHERMAN, TRACY M, UNION, UNION 134, WILLIAMS, WILLIAMS 82, WINCHESTER, ZANE	FOUNDATION SEED, 135 MUMFORD, UMC, COLUMBIA, MO 65211