

## Numerical Study on Characteristics of Stress in $\pi$ -Shaped Tubular Bellows (平成23年度 プレ 共同研究成果)

その他（別言語等） のタイトル	ステンレス・フレキシブルチューブの健全性評価
著者	FUJIKI Hiroyuki, DAIMARUYA Masashi, 清水 茂夫
journal or publication title	室蘭工業大学地域共同研究開発センター研究報告
volume	23
page range	40-46
year	2013-02
URL	<a href="http://hdl.handle.net/10258/00009051">http://hdl.handle.net/10258/00009051</a>

# ステンレス・フレキシブルチューブの健全性評価

藤木 裕行<sup>\*1</sup>, 臺丸谷 政志<sup>\*2</sup>, 清水 茂夫<sup>\*3</sup>

## Numerical Study on Characteristics of Stress in $\Omega$ -Shaped Tubular Bellows

### 概要

管状ベローズは構造物のエネルギーや変位を吸収するための機械装置である。管状ベローズは振動、熱膨張、さらに部品の円周・半径・軸方向変位等に対応するために広く使用されている。本研究では、近年開発され実際に利用されている $\Omega$ 型管状ベローズの応力特性を数値的に検討した。ベローズは内圧やたわみ荷重を受けており、そのときの応力状態を従来のU型ベローズならびにトロイダル型ベローズと比較した。数値解析にはソリッド要素を用い、二次元軸対象モデルで弾性解析を行った。ベローズの寸法は、内径 $r_i=64\text{mm}$ 、外形 $r_o=77\text{mm}$ 、ピッチ $q=11.5\text{mm}$ 、肉厚 $t=0.45\text{mm}$ とし、 $E=193\text{GPa}$ と $\nu=0.3$ の特性を持つSUS321で作られている。その結果、数値解析結果は理論結果とよく一致することが示され、ベローズの中で最も重要な応力は子午線方向応力であることがわかった。 $\Omega$ 型管状ベローズの子午線方向応力はU型のものよりも低いが、トロイダル型ベローズよりも高くなった。

### 1 INTRODUCTION

Tubular bellows is a mechanical device for absorbing energy or displacement in structures. It is widely used to deal with vibrations, thermal expansion, and the angular, radial, and axial displacements of components. It has been used for a long time in many engineering applications, therefore, numerous papers dealt with bellows have found in literatures. Many design formula of bellows can be found in ASME code<sup>(1)</sup>. And the most comprehensive and widely accepted text on bellows design is the Standards of Expansion Joint Manufactures Association, EJMA<sup>(2)</sup>. The study on characteristics of stress can be found in the following papers. Shaikh et al.<sup>(3)</sup> have performed an experimental work to

analyze failure of an AM 350 steel bellows. It is shown that the exposure of bellows to a marine atmosphere during a storage period of 13 years is suspected to have caused the pitting. Browman et al.<sup>(4)</sup> have determined dynamic characteristics of bellows by manipulating certain parameters of beam finite elements of a commercial software. It is reported that, in comparison with the semi-analytical, their method has potential of considering axial, bending, and torsion degrees of freedom simultaneously, and the rest of the system, also modeled by beam or shell finite elements. The procedure was also verified by experimental results. Li<sup>(5)</sup> has investigated the effect of the elliptic degree of  $\Omega$ -shaped bellows toroid on its stresses. The calculated stress results of  $\Omega$ -shaped bellows with elliptic toroid correspond to experiments. The elliptic degree of  $\Omega$ -shaped toroid affects the magnitude of internal pressure-induced stress and axial deflection-induced stress. Especially, it produces a great effect on the pressure-induced stress. In order to keep the bellows strength and maintain its fatigue life, the toroid elliptic degree should be reduced greatly in manufacturing process, for example, at least lower than 15%. Becht<sup>(6)</sup> evaluated the EJMA stress calculations for unreinforced bellows. Parametric analyses were conducted using linear axisymmetric shell elements. The analyses were carried out using commercial code finite element analysis. The prediction of meridional bending stress due to internal pressure and axial displacement were found to be accurate. However, prediction of membrane stress was found to deviate significantly from the finite element results.

Some recent works focused on manufacturing process of bellows are also found. Faraji et al.<sup>(7)</sup> reported evaluation of effective parameters in metal bellows forming process. The FEM commercial code LS-DYNA has been used and the results were compared with experiments. Faraji et al.<sup>(5)</sup> used a commercial FEM code ABAQUS Explicit to simulate manufacturing process of metal bellows. The objective is to

\*1 もの創造系領域機械科学ユニット

\*2 特任教授

\*3 トーフレ株式会社経営企画室

find the optimum design parameters. Kang et al.<sup>(6)</sup> proposed the forming process of various shape of tubular bellows using a single-step hydroforming process. The conventional manufacturing of metallic tubular bellows consists of four-step process: deep drawing, ironing, tube bulging, and folding. In their study a single step tube hydroforming combined with controlling of internal pressure and axial feeding was proposed.

Those reviewed papers show that there are needs for rigorous analysis and forming parameters of bellows. It is stated that the  $\Omega$ -shaped bellows have much better ability to endure high internal pressure than common U-shaped bellows. Their reliability and economy are remarkable in higher internal pressure situation<sup>(5)</sup>. As a note, there are two types of  $\Omega$ -shaped bellows are usually found, toroidal bellows and conventional  $\Omega$ -shaped bellows. However, in literatures only design equations for toroidal bellows are found. In this paper the characteristics of stress of conventional  $\Omega$ -shaped of bellows will be analysed numerically. The resulted stresses will be compared with those of conventional U-shaped bellows and toroidal bellows.

## 2 METHOD

Geometry of a considered bellows is depicted in Fig. 1. In general, it is a tubular with inside diameter of  $D_b$  and consists of several convolutions. In the figure, four convolutions are shown and the bellows pitch is  $q$ . The shape of the bellows convolution can be divided into conventional U-shaped,  $\Omega$ -shaped, and toroidal bellows. These shapes are depicted in Fig. 2. In the present work, single ply bellows are only considered.

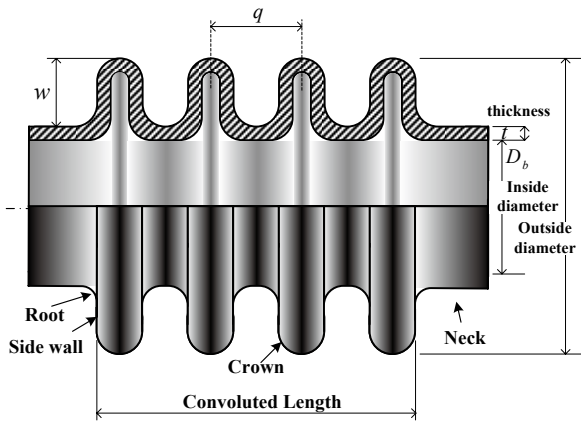


Fig. 1 Geometry of bellows

According to EJMA<sup>(2)</sup>, there are five design equations usually used in bellows. They are circumferential membrane stress due to internal pressure ( $S_2$ ), meridional membrane stress due to internal pressure ( $S_3$ ), meridional bending stress due to internal pressure ( $S_4$ ), meridional membrane stress due to deflection ( $S_5$ ), and meridional bending stress due to deflection ( $S_6$ ). These design equations will be used in this paper.

### 2.1 Design equations for U-shaped bellows

The bellows circumferential stress due to internal pressure ( $P$ ) is calculated based on equilibrium considerations. The equation for bellows circumferential membrane stress is:

$$S_2 = \frac{PD_m}{2t} \left( \frac{1}{0.571 + 2w/q} \right) \quad (1)$$

where  $D_m$  is mean diameter of bellows convolutions. It is defined as  $D_m = D_b + w + t$ .

The bellows meridional membrane stress due to internal pressure is calculated based on the component of pressure in axial direction acting on the convolution divided by the metal area of root and crown. It is calculated by the following equation:

$$S_3 = \frac{Pw}{2t} \quad (2)$$

The bellows meridional bending stress due to internal pressure ( $S_4$ ) is calculated by:

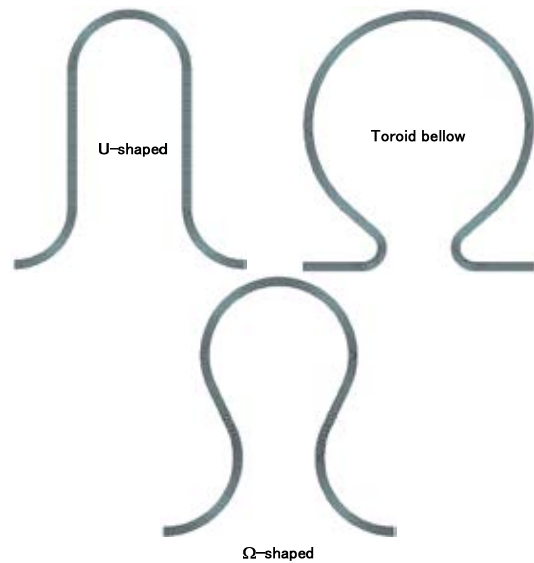


Fig. 2 Convolution shape of bellows

$$S_4 = \frac{P}{2} \left( \frac{w}{t} \right)^2 C_p \quad (3)$$

The bellows meridional membrane stress ( $S_5$ ) and meridional bending stress ( $S_6$ ) due to deflection ( $e$ ) are calculated by the following equations, respectively:

$$S_5 = \frac{E_b t^2 e}{2w^2 C_f} \quad (4)$$

$$S_6 = \frac{5E_b t^2 e}{3w^2 C_d} \quad (5)$$

where  $C_p$ ,  $C_f$ , and  $C_d$  are the factors to calculate  $S_4$ ,  $S_5$  and  $S_6$ , respectively. They are provided as diagram and table in EJMA<sup>(2)</sup>. And  $E_b$  is Modulus of Elasticity of the bellows.

## 2.2 Design equations for toroidal bellows

For toroidal bellows, meridional membrane stress due to pressure is calculated by:

$$S_3 = \frac{Pr}{t} \left( \frac{D_m - r}{D_m - 2r} \right) \quad (6)$$

Here  $r$  is mean radius of toroidal bellows convolution and  $D_m$  is the median diameter of bellows convolution.

Membrane stress of the bellows due to deflection is calculated by:

$$S_5 = \frac{E_b t^2 e}{34.5r^3} B_1 \quad (7)$$

The bellows meridional bending due to deflection is calculated by:

$$S_6 = \frac{E_b t e}{34.3r^2} B_2 \quad (8)$$

$B_1$  and  $B_2$  are factors provided in appendix I of EJMA<sup>(2)</sup>.

## 2.3 Numerical simulation

In this study, ANSYS code is used to carry out numerical simulation. Structural solid element 8-node Plane183 is employed. Elastic analyses were carried out on a full convolution of the bellows with axisymmetric model. The computational domain is divided into 10 elements in thickness and 500 elements in length. The proper number elements test was performed, where 800 elements in length was tested. The results showed essentially the same. Therefore, the model with elements  $10 \times 500$  is used in all analyses.

In the present analyses, a conventional  $\Omega$ -shaped bellows available in market with nominal diameter 125A is picked to be analyzed<sup>(9)</sup>. The bellows inside diameter is 128 mm with outside diameter of 154 mm, thickness of 0.45 mm, pitch of 11.5 mm, and height is 12.5 mm. The bellows material is made of stainless steel SUS 321 with the modulus of elasticity of 193 GPa and poisson's ratio of 0.3. The model of  $\Omega$ -shaped bellows and its constraints are presented in Fig. 3. In the present work, the internal pressure ( $P_i$ ) and axial deflection are only considered. In Fig. 3, the constraints due to internal pressure are only presented. For toroidal bellows the radius of the toroidal convolution is assumed to be  $r = 5.5$  mm.

## 3 RESULTS AND DISCUSSIONS

### 3.1 Numerical validations

In order to validate the present numerical method a comparison test is performed. Since, solid element is used, the stress resulted from FEM is a local stress. However, the design equations result in averaged stress. Thus, the FEM stresses shown in comparison are the linearized one. The meridional membrane stress and meridional bending stress due to internal pressure of U-shaped bellows and toroidal bellows were calculated. The applied internal pressures are 1 MPa, 1.5 MPa, and 2 MPa, respectively. The results are presented in Table 1. In the table, the results from analytical solutions by EJMA equations are also presented. The comparisons show a good agreement.

The meridional membrane stress and meridional

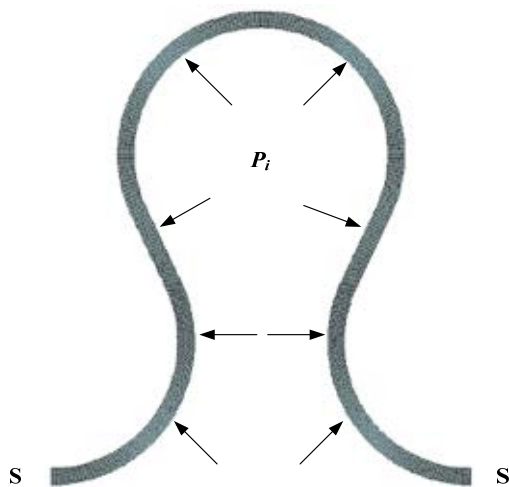


Fig. 3 A convolution computational model and its constrains

bending stress due to axial deflections are presented in Table 2. The applied axial deflections are 0.5 mm, 0.75 mm, and 1 mm, respectively. In the table, the results from analytical solution by EJMA equations are also presented. The comparisons for U-shaped bellows show a good agreement. However, for toroidal bellows the analytical solutions show a significant discrepancy. The discrepancy caused by the factors  $B_1$  and  $B_2$  provided by EJMA<sup>(2)</sup>. Thus, further

Table 1 Analytic and FEM stresses due to internal pressure

Type of Bellows	Stress	Internal Pressure [MPa]		
		1	1.5	2
U-shaped bellows	$S_3$ (Eq. (2))	13.889	20.833	27.778
	$S_3$ (FEM)	13.032	19.572	26.137
	Ratio	0.938	0.939	0.94
	$S_4$ (Eq. (3))	251.00	376.50	502.01
	$S_4$ (FEM)	241.91	360.33	477.7
	Ratio	0.964	0.957	0.952
Toroidal bellows	$S_3$ (Eq. (6))	12.733	19.099	25.466
	$S_3$ (FEM)	13.596	20.366	27.128
	Ratio	1.068	1.066	1.065

Table 2 Analytic and FEM stresses due to deflection

Type of Bellows	Stress	Axial Deflection [mm]		
		0.5	0.75	1.
U-shaped bellows	$S_5$ (Eq. (4))	3.252	4.877	6.503
	$S_5$ (FEM)	3.389	5.169	7.02
	Ratio	1.042	1.059	1.079
	$S_6$ (Eq. (5))	265.66	398.49	531.32
	$S_6$ (FEM)	239.49	357.85	476.05
	Ratio	0.901	0.898	0.896
Toroidal bellows	$S_5$ (Eq. (7))	7.239	10.858	14.477
	$S_5$ (FEM)	3.686	5.481	7.254
	Ratio	0.509	0.505	0.501
	$S_6$ (Eq. (8))	250.97	376.45	501.94
	$S_6$ (FEM)	172.65	254.41	333.71
	Ratio	0.688	0.677	0.665

study need to be performed to evaluate those factors. This is beyond the objective of the present paper.

In general, the present numerical method shows good agreement with results by EJMA equations, except for the toroidal bellows. Therefore, the method can be used to evaluate the characteristics of stress distributions in  $\Omega$ -shaped bellows.

### 3.2 Comparison of design stresses of all bellows

The present numerical method is now used to evaluate characteristics of stress for all bellows. The first comparison is meridional membrane stress due to internal pressure. The applied internal pressures are 1 MPa, 1.5 MPa, and 2 MPa, respectively. The results are presented in Fig. 4. The figure shows that meridional membrane stress in  $\Omega$ -shaped bellows

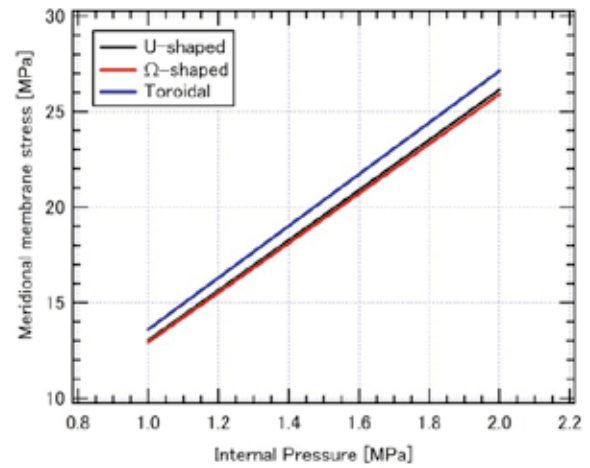


Fig. 4 Meridional membrane stresses due to internal pressure

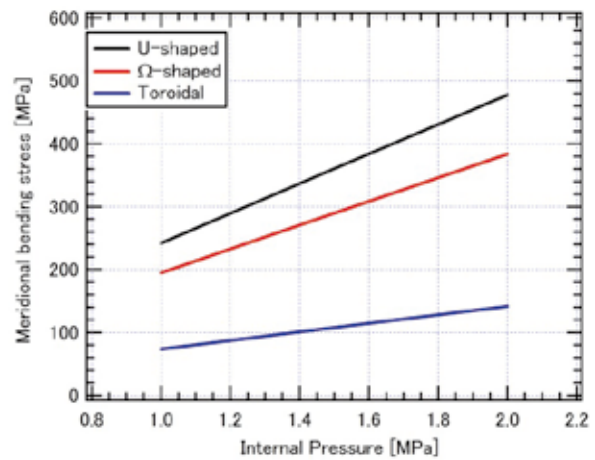


Fig. 5 Meridional bending stresses due to internal pressure

is lower than in toroidal bellows, but same value as U-shaped bellows.

The comparisons of meridional bending stress of all considered bellows due to internal pressure are presented in Fig. 5. The figure shows that meridional bending stresses are higher than meridional membrane stresses. This suggests that meridional bending stress is more destructive than meridional membrane stress. The meridional bending stress of  $\Omega$ -shaped bellows is lower than U-shaped bellows, but it is higher than toroidal bellows.

The comparisons of meridional membrane stress of all considered bellows due to axial deflection are presented in Fig. 6. The applied axial deflections are 0.5 mm, 0.75 mm, and 1 mm, respectively. The figure shows that meridional membrane stress in  $\Omega$ -shaped bellows is lower than in toroidal and U-shaped bellows.

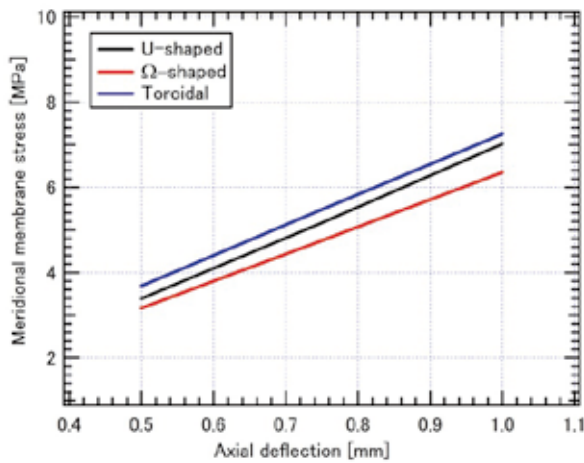


Fig. 6 Meridional membrane stresses due to axial deflection

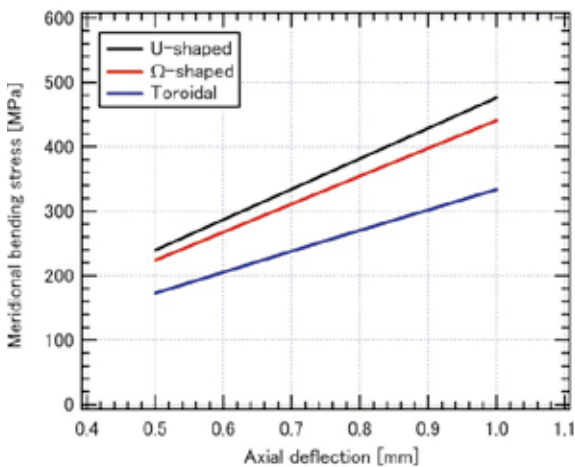


Fig. 7 Meridional bending stresses due to axial deflection

The comparisons of meridional bending stress of all bellows due to axial deflection are presented in Fig. 7. Here, the meridional bending stresses are higher than meridional membrane stresses. This also suggests that meridional bending stress is more destructive than meridional membrane stress. The figure shows that meridional bending stress of  $\Omega$ -shaped bellows is lower than U-shaped bellows, but it is higher than toroidal bellows.

Those comparisons reveal that the most destructive stress in bellows due to internal pressure and axial deflection is meridional bending stress. Furthermore, for both internal pressure and axial deflections the meridional bending stress of  $\Omega$ -shaped bellows is lower than U-shaped bellows, but it is higher than toroidal bellows. Thus,  $\Omega$ -shaped bellows is expected to have longer operational life than U-shaped bellows.

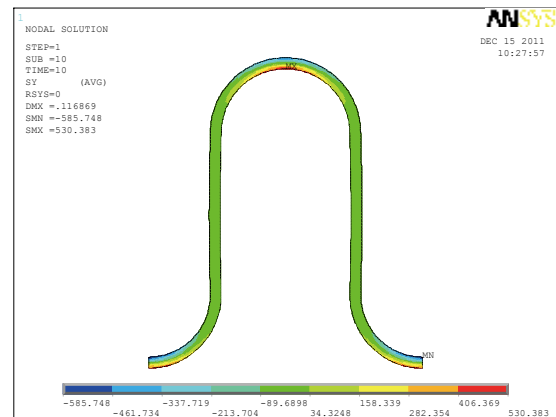


Fig. 8 Axial stress distribution on U-shaped bellows due to internal pressure of 2 MPa

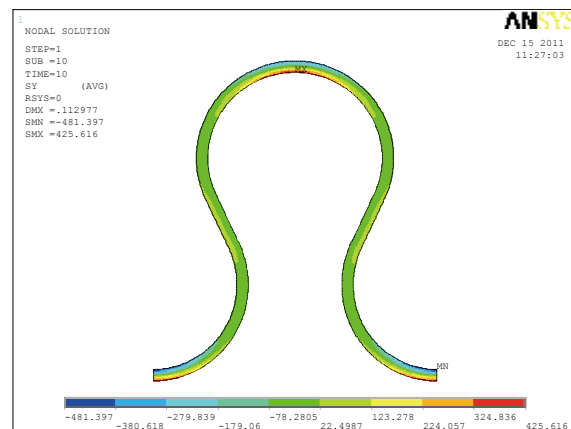


Fig. 9 Axial stress distribution on  $\Omega$ -shaped bellows due to internal pressure of 2 MPa

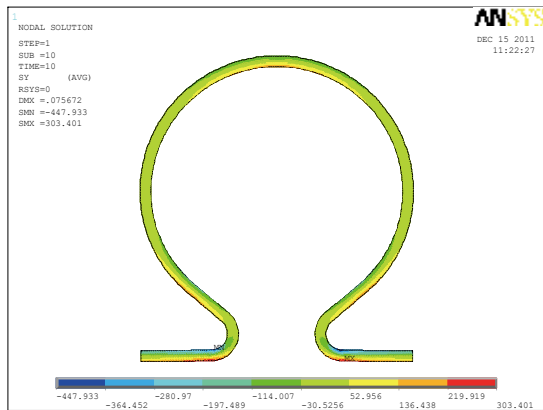


Fig. 10 Axial stress distribution on toroidal bellows due to internal pressure of 2 MPa

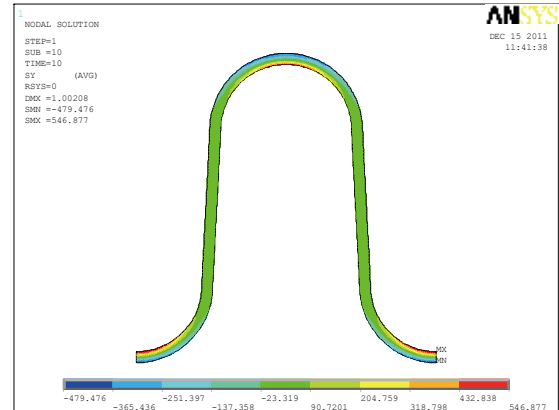


Fig. 11 Axial Stress distribution on U-shaped bellows due to axial deflection of 1 mm

### 3.3 Stress distributions due to internal pressure

The axial stress distributions in the bellows due to internal pressure of 2 MPa for U-shaped,  $\Omega$ -shaped, and toroidal bellows are presented in Fig. 8, Fig. 9, and Fig. 10, respectively. It can be said that U-shaped and  $\Omega$ -shaped bellows show the similar distribution but they are different from toroidal bellows. In the U-shaped and  $\Omega$ -shaped bellows, the maximum axial stress takes place on the crown part. In the toroidal one, it takes places on the root part.

### 3.4 Stress distributions due to axial deflection

The axial stress distributions in the bellows due to axial deflection of 1 mm for U-shaped,  $\Omega$ -shaped, and toroidal bellows are presented in Fig. 11, Fig. 12, and Fig. 13, respectively. Those figures show that there is no significant different from all bellows.

## 4 CONCLUSIONS

The numerical study on characteristics of stress in  $\Omega$ -shaped bellows has been performed. The design stresses and distributions are compared with U-shaped and toroidal bellows. The main conclusion is that the most destructive stress in bellows due to internal pressure and axial deflection is meridional bending stress. Furthermore, for both internal pressure and axial deflections the meridional bending stress of  $\Omega$ -shaped bellows is lower than U-shaped bellows, but it is higher than toroidal bellows. Thus,  $\Omega$ -shaped bellows is expected to have longer operational life in comparison with U-shaped bellows.

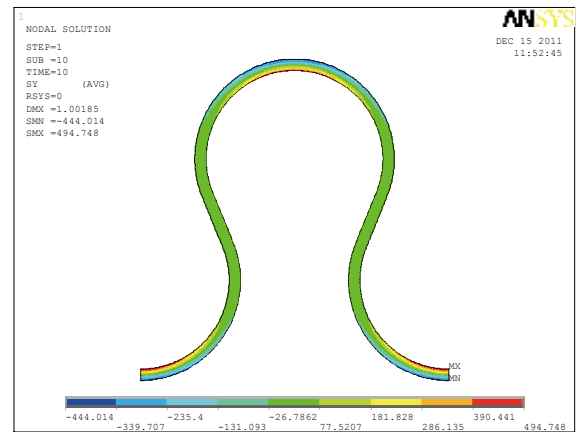


Fig. 12 Axial Stress distribution on  $\Omega$ -shaped bellows due to axial deflection of 1 mm

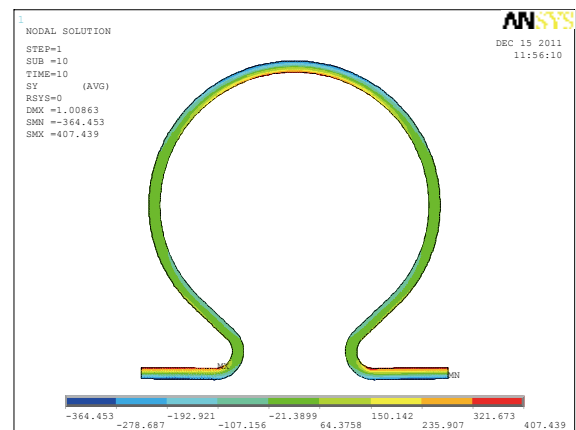


Fig. 13 Axial Stress distribution on toroidal bellows due to axial deflection of 1 mm

## REFERENCE

- (1) ASME, ASME Boiler and Pressure Vessel Code-Section VIII, Division 1, Appendix 26 – Pressure Vessel and Heat Exchanger Joints, New York, 2000.
- (2) EJMA, Standards of Expansion Joint Manufacturers Association, ninth edition, New York, 2008.
- (3) Shaikh, H. George, G., and Khatak, H.S., Failure analysis of an AM 350 steel bellows, Engineering Failure Analysis, Vol 8, (2001), p571-576.
- (4) Broman, G.I., Jonsson, A.P., and Hermann, M.P., Determining dynamic characteristics of bellows by manipulated beam finite elements of commercial software, International Journal of Pressure Vessels and Piping, No. 77, (2000), p445-453.
- (5) Li, T., Effect of the elliptic degree of  $\Omega$ -shaped bellows toroid on its stresses, International Journal of Pressure Vessels and Piping 75, (1998), p951-954.
- (6) Faraji, Gh., Mashhadi, M.,M., and Norouzfard, V., Evaluation of effective parameters in metal bellows forming process, Journal of Materials Processing Technology, No 209, (2009), p3431-3437.
- (7) Faraji Gh., Besharati, M.K., Mosavi, M., and Kashanizadeh, H., Experimental and finite element analysis of parameters in manufacturing of metal bellows, Int. Journal of Manufacturing Technology, No 38, (2008), p641-648.
- (8) Kang, B.H., Lee, M.Y, Shon, S.M., and Moon, Y.H., Forming various shapes of tubular bellows using a single-step hydroforming process, Journal of Materials Processing Technology, No 194, (2007), p1-6
- (9) TOFLE, Expansion Joints, Company Profile, TOFLE Co. Inc., OSAKA, 2011.