

## Aran, Galway Bay and Slyne Head *Nephrops* Grounds (FU17) 2016 UWTV Survey Report and catch options for 2017.

Jennifer Doyle<sup>1</sup>, Colm Lordan<sup>1</sup>, David Stokes<sup>1</sup>, Sinead O'Brien<sup>1</sup>, Cian Kelly<sup>1</sup>, Karl Bentley<sup>1</sup> and Jean-Philippe Vacherot<sup>2</sup>.

<sup>1</sup> Marine Institute, Oranmore, Galway, Ireland.

<sup>2</sup> Ifremer, 8 Rue François Toullec, 56100 Lorient, France.



Version Final October, 2016

## Abstract

This report provides the main results and findings of the fifteenth annual underwater television on the Aran, Galway Bay and Slyne head *Nephrops* grounds, ICES assessment area; Functional Unit 17. The survey was multi-disciplinary in nature collecting UWTV, fishing, CTD and other ecosystem data. In 2016 a total of 45 UWTV stations were successfully completed, 34 on the Aran Grounds, 7 on Galway Bay and 4 on Slyne Head patches. The mean burrow density observed in 2016, adjusted for edge effect, was medium at 0.29 burrows/m<sup>2</sup>. The final krigged burrow abundance estimate for the Aran Grounds was 343 million burrows with a CV (or relative standard error) of 3 %. The final abundance estimate for Galway Bay and Slyne Head was 25 and 11 million burrows with CVs of 7% and 3% respectively. The total abundance estimates have fluctuated considerably over the time series. The 2016 combined abundance estimate was 32% lower than in 2015 and at 379 million and is below the MSY B<sub>trigger</sub> (540 million). Using the 2016 abundance estimate and updated stock data implies catch of 489 tonnes and landings of 456 tonnes in 2017 when MSY approach is applied (assuming that discard rates and fishery selection patterns do not change from the average of 2013–2015). *Virgilaria mirabilis* was the only sea-pen species observed on the UWTV footage. Trawl marks were present at 20% of the Aran stations surveyed.

Key words: *Nephrops norvegicus*, stock assessment, geostatistics, underwater television (UWTV), benthos, CTD.

### Suggested citation:

Doyle, J., Lordan, C., Stokes, D., O'Brien, S., Kelly, C., Bentley, K., and Vacherot, J.P. 2016. Aran, Galway Bay and Slyne Head *Nephrops* Grounds (FU17) 2016 UWTV Survey Report and catch options for 2017. Marine Institute UWTV Survey report.

## Introduction

*Nephrops norvegicus* are common around the Irish coast occurring in geographically distinct sandy/muddy areas where the sediment is suitable for them to construct their burrows. The *Nephrops* fishery in ICES sub-area 7 is extremely valuable with landings in 2015 worth around € 96 million at first sale. The *Nephrops* fishery 'at the back of the Aran Islands' can be considered the mainstay of the Ros a Mhíl fleet. Estimated landings of 370 t in 2015 were worth approximately €2.2 m at first sale. Without this *Nephrops* fishery the majority of vessels in the fleet would cease being economically viable (Meredith, 1999). Given these socio-economic realities good scientific information on stock status and exploitation rates are required to inform sustainable management of this resource.

*Nephrops* spend a great deal of time in their burrows and their emergence behaviour is influenced by several factors: time of year, light intensity, tidal strength, etc. Underwater television surveys and assessment methodologies have been developed to provide a fishery independent estimate of stock size, exploitation status and catch advice (ICES, 2009a & 2013). This is the fifteenth annual UWTV survey of the 'Aran grounds'. The survey covers three geographically discrete mud patches; the Aran Ground, Galway Bay and Slyne Head all of which lie within the ICES assessment area Functional Unit 17 (Figure 1). The 2016 survey was multi-disciplinary in nature; the specific objectives are listed below:

1. To complete randomised fixed isometric survey grid of 34 UWTV with 3.5 nautical mile (Nmi) spacing stations on the "Aran" *Nephrops* ground.
2. To carry out  $\geq 5$  UWTV indicator stations on the Galway Bay and Slyne Head *Nephrops* ground.
3. To obtain 2016 quality assured estimates of *Nephrops* burrow distribution and abundance on the "Aran" *Nephrops* ground (FU17). These will be compared with those collected previously.
4. To collect ancillary information from the UWTV footage collected at each station such as the occurrence of sea-pens, other macro benthos and fish species and trawl marks on the sea bed.
5. To collect oceanographic data using a sledge mounted CTD.
6. To sample *Nephrops* and macro benthos using a 4 m beam trawl deployed at  $\sim 10$  stations.

This report details the final UWTV results of the 2016 survey and also documents other data collected during the survey. Operational survey details are available in form of a survey narrative from the scientist in charge (JD). The 2016 abundance are used to generate catch options for 2017 in line with the recommendations and procedures outlined in the stock annex for FU17 (ICES, 2015).

## Material and methods

Since 2012 the Aran survey design has been based a randomised isometric grid with stations every 3.5 Nmi or 6.5km. This spacing was used to achieve good spatial coverage over the known extent of the ground and to generate burrow surface that reflects the underlying abundance. The ground boundary used for the Aran, Galway Bay and Slyne grounds was

revised by an ICES inter-benchmark process (ICES, 2015). In the past stations in Galway Bay and Slyne Head were randomly picked from an area defined by previously collected UWTV data, VMS data (Gerritsen & Lordan, 2011) and multi-beam backscatter data (Figure 1 & 2). Since 2012, the “create random points tool” in ArcGIS was used to pick stations within the defined polygons. Not all stations completed in 2016 and in previous years fell within the new ground polygons and these were excluded from the analysis.

Survey timing was generally standardised to June each year. In 2003, poor weather and technical problems meant that coverage was poor compared with the other years. In 2004, bad weather prevented the completion of the survey in June so approximately 50% of the stations were carried out one month later in July. In 2003 and 2008 due to weather downtime stations could not be completed at Slyne Head. In 2015 the Galway Bay and 14 Aran stations were surveyed on June 10<sup>th</sup> and 11<sup>th</sup> on RV Celtic Voyager. The vessel then broke down and the remaining stations (20 Aran and 5 Slyne) were carried out on RV Prince Madog on the 1<sup>st</sup> and 2<sup>nd</sup> of July.

The operational protocols used were those reviewed by WKNEPHTV 2007 (ICES, 2007) and employed on other UWTV surveys in Irish waters. They can be summarised as follows: At each station the UWTV sledge was deployed. Once stable on the seabed a 10 minute tow was recorded onto DVD. Time referenced video footage was collected by one video camera with a field of view or ‘FOV’ of 75 cm. Vessel position (DGPS) and position of sledge (using a USBL transponder) were recorded every 2 seconds. The navigational data was quality controlled using an “r” script developed by the Marine Institute (ICES, 2009b) an example is shown in Figure 3. In 2016 the USBL navigational data was used to calculate distance over ground for all but two of the stations.

In line with SGNEPS recommendations all scientists were trained/re-familiarised using training material and validated using reference footage for the Aran Grounds prior to recounting at sea (ICES, 2009b). Figure 4 shows individual’s counting performance in 2016 against the reference footage as measured by Linn’s concordance correlation coefficient (CCC). A threshold of 0.5 was used to identify counters who needed further training. Once this training and testing process had been undertaken, all recounts were conducted by two scientists independent of each other on board the research vessel during the survey. During this review process the visibility, ground type and speed of the sledge during one-minute intervals were subjectively classified using a classification key. In addition the numbers of *Nephrops* burrows complexes (multiple burrows in close proximity which appear to be part of a single complex which are only counted once), *Nephrops* activity in and out of burrows were counted and recorded for each one-minute interval. Following the recommendation of SGNEPS the time for verified recounts was 7 minutes (ICES, 2009b).

The occurrence of trawl marks, fish species and other species was also recorded for each minute. Abundance categories of sea-pen species were also recorded due to OSPAR Special Request (ICES 2011). A key was devised to categorise the densities of seapens based on SACFOR abundance scale (Table 2) after ICES (2011). Finally, if there was any time during the one-minute where counting was not possible, due to sediment clouds or other reasons, this was also estimated so that the time window could be removed from the distance over ground calculations. Consistency and bias between individual counters was examined using

Figure 5. There is some variability between counters but no obvious bias or excessive deviations.

The recount data were screened for one minute intervals with any unusually large deviation at sea. These minutes were re-verified by means of consensus counts. Mean density was calculated by dividing the total number of burrow systems by the survey area observed. The field of view of the camera at the bottom of the screen was estimated at 75cm assuming that the sledge was flat on the seabed (i.e. no sinking). This field of view was confirmed using lasers during the 2016 survey. Occasionally the lasers were not visible at the bottom of the screen due to sinking in very soft mud (the impact of this is a minor under estimate of densities at stations where this occurred).

To account for the spatial co-variance and other spatial structuring a geo-statistical analysis of the mean and variance was carried out the RGeostats 10.0.8 (Renard D. et al., 2015). The procedure used is fully documented in the stock annex.

To estimate the abundance for Galway Bay and Slyne Head grounds, the area of each ground polygon was calculated in ArcGIS10 and an average value used (Table 1). The abundance estimation is the product of the mean density and ground area. The sample variances, standard errors, t-values and 95% CI were calculated for each ground.

For each UWTV station a CTD profile was logged for the duration of each tow using a sled mounted and calibrated Seabird SBE37. The sensor takes readings every 5 seconds and will be processed at a later stage.

Four beam trawl tows were conducted randomly across the Aran grounds once TV operations were successfully completed. All *Nephrops* caught were sorted by sex and maturity category, weighed and measured using the NEMESYS electronic measuring system. A length stratified sub-sample of *Nephrops* was taken for each haul where individual length, whole weight, tail weight and maturity were recorded. The fish catch was identified to species level and sampled by weight (kgs) only. The benthic catch was identified, weighed (g) and counted. The UWTV station positions and tracks for the four valid beam trawl tows are shown in Figure 2.

## Results

The station positions for the 34 stations on the Aran grounds, 7 in Galway Bay and 4 at Slyne head are shown in Figure 2. One further station was carried out in Galway Bay on the zero grounds and is not used in the analysis. A combined violin and box plot of the observed burrow densities from 2006 to 2016 is presented in Figure 6. This shows relatively large inter-annual variation in mean, median and density ranges over time. Density increased in first three years of the time series but then declined significantly in 2006. Since then there has been a gradual downward trend. The mean and median density has decreased significantly in 2016. It has been very noticeable since 2011 that there was a substantial reduction in density throughout the ground with no high density ( $> 0.7/m^2$ ) observed. Figure 7 shows the variability in density between minutes and operators (counters) for each station. These show that the burrow estimates are fairly consistent between minutes and counters.

A combined krigged contour plot and bubble plot of the density data are shown in Figure 8. These show that densities have fluctuated considerably over the time series and throughout the ground. The fluctuations are not limited to a single station but instead occur fairly homogeneously across the ground. In general the densities are higher towards the western side of the ground and there is a notable trend towards lower densities towards the east. On the south western boundary there are often high densities close to the boundary. In this area there is a sharp transition from mud to rocky substrate. The decrease in densities in 2016 was mainly towards the middle of the ground.

The summary statistics from this geo-statistical analysis for the Aran Grounds are given in Table 3 and Figure 9. The 2016 abundance estimate of 343 million burrows is a 29% lower than in 2015. The estimation variance of the surveys is relatively low (CVs in the order <6%).

The summary statistics for the stations on Slyne head and in Galway Bay are given in Table 4. The abundance estimates for Galway Bay *Nephrops* ground and for Slyne Head *Nephrops* ground also are shown in Figure 9. The Galway Bay estimates fluctuate widely but appear to be highly correlated with the Aran ground (except 2004). Estimates for the Slyne Head ground also fluctuate considerably but show no significant correlation with the other areas. The uncertainty bounds for both areas also fluctuate and inter-annual changes are only statistically significant in a few years. On average the Aran Grounds account for ~88% of the total estimated burrow abundance from FU17. Galway Bay and Slyne Head account for ~8% and ~2% respectively. The 2016 combined abundance estimate was 32% lower than in 2015 and at 379 million is also below MSY  $B_{\text{trigger}}$  value of 540 million shown in Figure 10.

Figure 11 shows the standardised length frequency distributions (LFDs) by sex of *Nephrops* caught using a beam trawl on the Aran grounds between 2006 and 2016 surveys. No fishing was carried out on surveys prior to 2006 or in 2008 and 2015 (due to time constraints as a result of poor weather conditions). For plotting purposes the individuals <10 CL mm caught in 2010 and 2016 were split evenly between males and females as it is not possible to accurately assign sex to individuals that small. There is weak indication of a year class signal in 2010 and 2011 but few individuals less than 20 CL mm in most years. The mean lengths for both sexes in the survey have been fairly stable over time around the overall average of 27.57 CL mm. It should be noted that there is some variability between the sample sizes and structure for individual hauls shown in Figure 12. Figure 13 depicts a modelled maturity ogive (binomial GM) for female *Nephrops* where 50% of the females are mature at 21.5 CL mm.

A summary of the benthic taxa by tow is presented in Table 6. *Lunatia species* (necklace shell) was the most abundant species and was recorded in all tows. *Goneplax rhomboids*, a burrowing crab species was recorded at one tow. *Eledone cirrhosa* (curled octopus) was also recorded where this species is a noted predator of crustaceans and has been observed lying close to the *Nephrops* burrow entrances on the Smalls ground (FU22). *Virgularia mirabilis* was also present in all tows. Table 7 summarises the fish catches. The most abundant fish species recorded were; *Lepidorhombus whiffiagonis* (megrim), *Lophius budegassa* (black-bellied monkfish), *Glyptocephalus cynoglossus* (witch) and *Sprattus sprattus* (sprat).

The sea-pen presence-absence observations across the *Nephrops* grounds are mapped in Figure 14 using the key described in Table 2. All of sea-pens were identified from the video footage as *Virgularia mirabilis* and was also present at stations where trawl marks were recorded. This sea-pen species was recorded as frequently present at 66%, occasionally present at 31% and commonly present at 16% of total stations. Trawl marks were noted at 20% of the Aran stations surveyed. Trawl marks were also present at one station at Slyne Head. No trawl marks were noted at the Galway Bay stations.

The UWTV abundance data together with data from the fishery; landings, discards and removals in number are used to calculate the harvest ratio in 2015 of 3.4%. The mean weight in the landings and the discards and the proportions of removal retained are also shown (Table 8).

The basis to the catch options table is given in Table 9. The catch and landings options at various different fishing mortalities are calculated in line with the stock annex using the 2016 survey abundance are presented in Table 10. The latest estimate of stock abundance (value from June 2016 survey, 379 million) is below the MSY  $B_{\text{trigger}}$  value (540 million). The ICES MSY approach states that under such conditions the  $F_{\text{MSY}}$  harvest rate (8.5 % for FU17 Norway lobster) should be reduced by multiplying it by the ratio of current abundance to MSY  $B_{\text{trigger}}$ . This corresponds to a harvest rate of  $8.5 \times 379 \div 540 = 6.0$  % for the catch advice in 2017. Fishing at MSY approach in 2017 would result in catches of 489 tonnes and landings of 456 t assuming that discard rates and fishery selection patterns do not change from the average of 2013–2015.

## Discussion

Observed burrow densities have fluctuated a lot over time in this area. The abundance shows an overall decreasing trend over time and has been at or below MSY  $B_{\text{trigger}}$  since 2012. This is in contrast to the more stable burrow abundance estimates in most other areas in 7 over similar time frames. Because the burrow abundance decreased significantly in 2016 below MSY  $B_{\text{trigger}}$  the ICES MSY approach states that under such conditions the  $F_{\text{MSY}}$  harvest rate (8.5 % for FU17 Norway lobster) should be reduced by multiplying it by the ratio of current abundance to MSY  $B_{\text{trigger}}$ .

Discard rates for this FU are estimated to have reduced significantly in the in the last three years and are now around 7%. Because harvest rates are calculated on the basis of numbers and 25% of the *Nephrops* in this area are assumed to have survived discarding up to now this presents a problem in calculating catch options for 2016. *Nephrops* in this area will be covered under the landings obligation in 2016 but it is not yet clear how this will be implemented in practice. Under the Landings Obligation scenario in Table 9 it is assumed that all catches will be landed in 2016 so the discards that would have survived up to now are also removed from the fishery. In this scenario fishing at MSY approach in 2016 would imply total catches of 473 t which implies; landings or in ICES terminology “wanted catch” of 441 t and discards or “unwanted catch” of 32 t. The difference between this scenario and the scenario where discards continue at current rates is minimal.

The imposition of the landings obligation on *Nephrops* fisheries in 2016 should result in changes in selectivity. This is not taken into account in any of the catch advice because it is

not possible to predict exactly what might happen. The main message is that any improvements in selectivity in the fishery and reductions in discards will result in increased mean weight in the catches. This will in turn reduce overall mortality on the stocks and allow for catch increases in the future.

An important objective of this UWTV survey is to collect ancillary information. The occurrence of trawl marks on the footage is notable for two reasons. Firstly, it makes identification of *Nephrops* burrows more difficult as the trawl marks remove some signature features making accurate burrow identification more difficult. Secondly, only occupied *Nephrops* burrows will persist in heavily trawled grounds and it is assumed that each burrow is occupied by one individual *Nephrops* (ICES 2009b).

The CTD data collected during the survey will augment the knowledge base on habitat and oceanographic regime.

Monitoring the occurrence and frequency of sea-pens observed on these *Nephrops* patches is important in the context of OSPAR's designations of sea-pen and burrowing megafauna communities as threatened. The sea-pen species *Virgularia mirabilis* which was seen in 2016 have been observed on previous surveys of FU17. Monitoring *Nephrops* stock and the benthic habitat is also important in the context of the MFSD indicators (e.g. sea floor integrity).

The main objectives of the survey were successfully met for the fifteenth successive year. The UWTV coverage and footage quality was excellent throughout the survey. The multi-disciplinary nature of the survey means that the information collected is highly relevant for a number of research and advisory applications.

## **Acknowledgments**

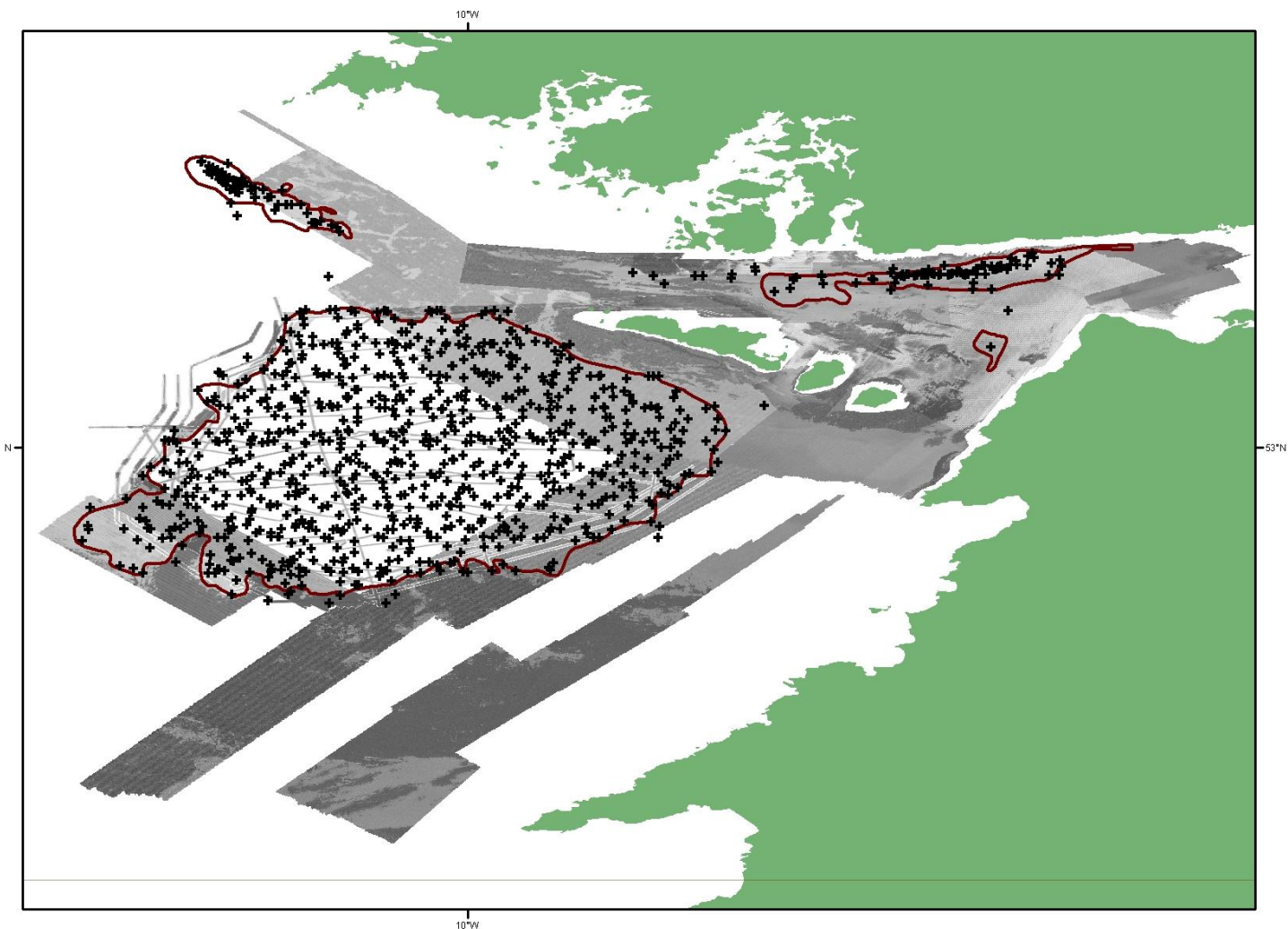
We would like to express our thanks and gratitude to Phillip Baugh (Master) and crew of the RV. Celtic Voyager for their good will and professionalism throughout the survey. Thanks also to P&O Maritime IT & Instrumentation Technical staff for handling all onboard technical difficulties. Thanks to Áodhan Fitzgerald RVOPs and Rob Bunn FEAS at the Marine Institute for organising survey logistics. Thanks to Gordon Furey, Barry Kavanagh, John Barry and Tom O'Leary P&O Maritime for shore side support.

## **References**

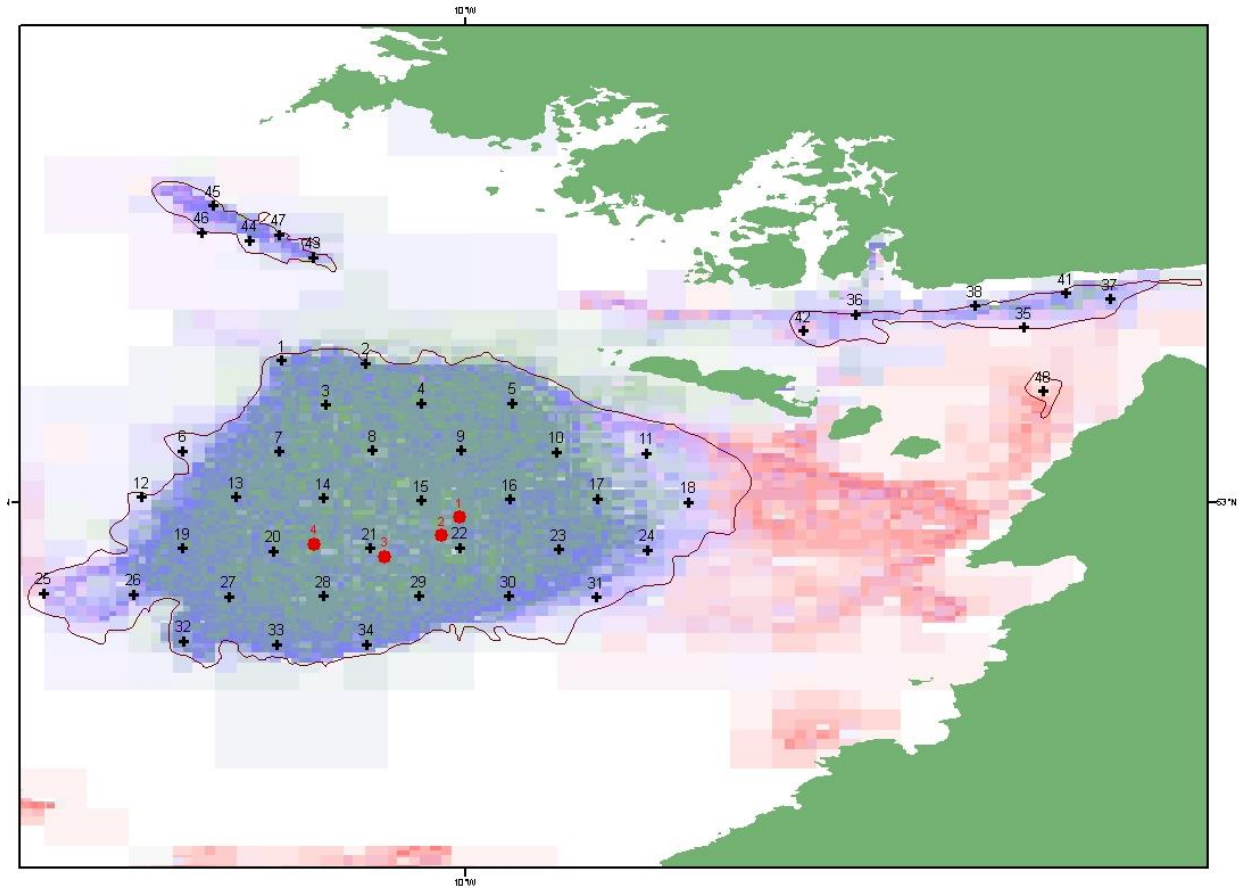
- Gerritsen HD and Lordan C, (2011). Integrating Vessel Monitoring Systems (VMS) data with daily catch data from logbooks to explore the spatial distribution of catch and effort at high resolution. ICES J Mar Sci 68 (1): 245-252.
- ICES 2007. Report of the Workshop on the use of UWTV surveys for determining abundance in *Nephrops* stocks throughout European waters (WKNEPHTV). ICES CM: 2007/ACFM: 14 Ref: LRC, PGCCDBS.
- ICES 2009a. Report of the Benchmark Workshop on *Nephrops* assessment (WKNEPH). ICES CM: 2009/ACOM:33
- ICES 2009b. Report of the Study Group on *Nephrops* Surveys (SGNEPS). ICES CM 2009/LRC: 15. Ref: TGISUR.



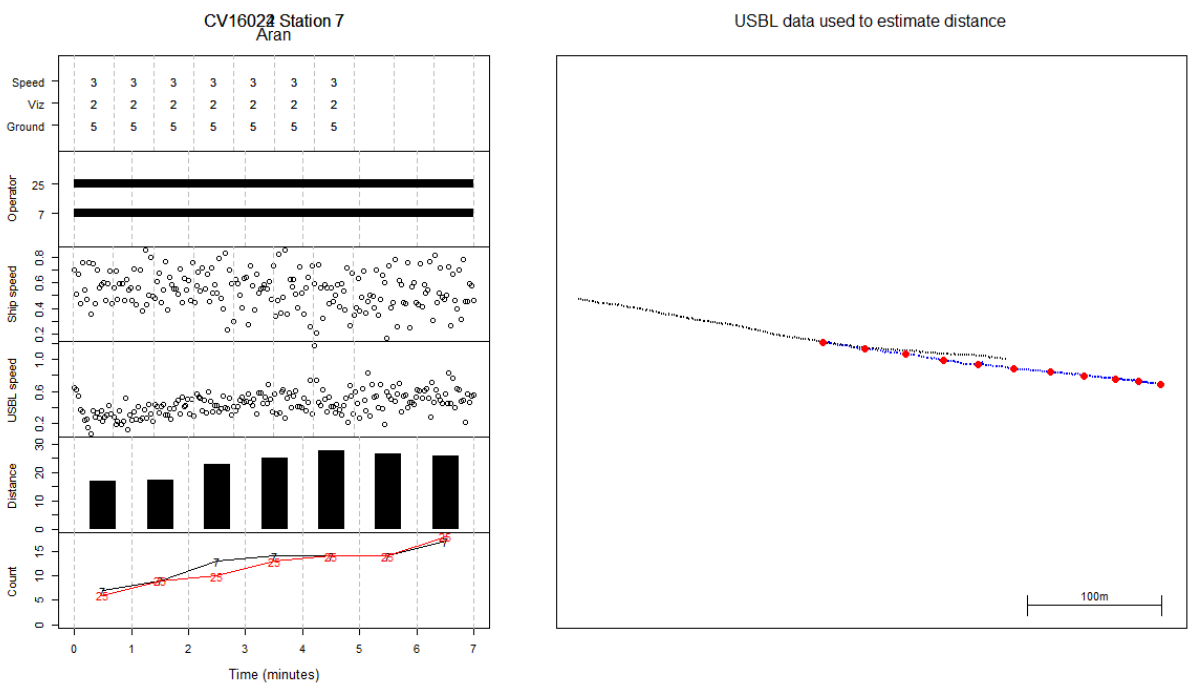
- ICES. 2013. Report of the Benchmark Workshop on Nephrops Stocks (WKNEPH), 25 February–1 March 2013, Lysekil, Sweden. ICES CM 2013/ACOM:45. 230 pp.
- ICES 2015. Report of the Inter-Benchmark Protocol of Nephrops in FU17 and FU14 (IBPNeph). ICES CM: 2015/ ACOM:38. In draft.
- ICES 2016. Report of the Working Group for Celtic Seas Ecoregion (WGCSE). ICES CM: 2016/ ACOM:13.
- Meredith, D. 1999. The strategic importance of the fishing sector to rural communities and Ireland: a case study of the Rossaveal Region, Co. Galway”, Irish Fisheries Investigations No. 4, Marine Institute 1999. <http://hdl.handle.net/10793/797>
- Renard D., Bez N., Desassis N., Beucher H., Ors F., Laporte F. 2015. RGeostats: The Geostatistical package [version:11.0.3]. MINES ParisTech. <http://cg.ensmp.fr/rgeostats>



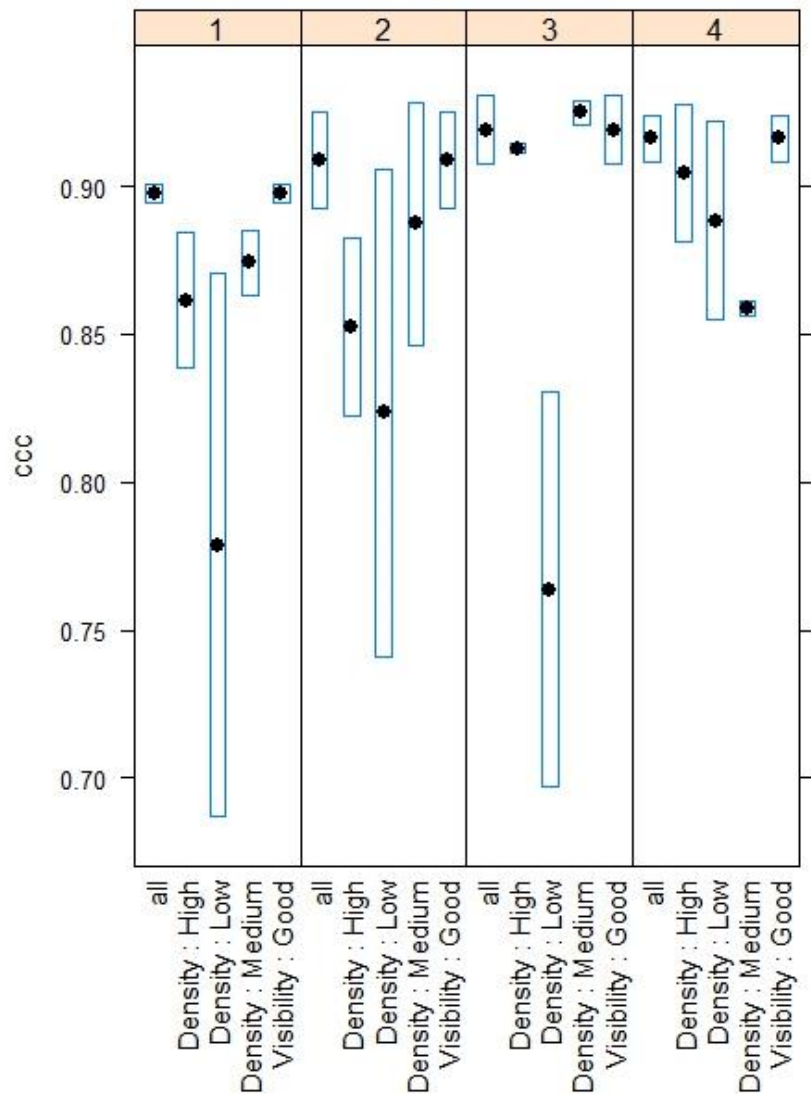
**Figure 1:** The spatial distribution of all UWTV survey stations from 2002-2016 in Functional Unit 17 overlaid on multibeam backscatter data (source: INFOMAR 2005-2015). Darker backscatter indicates harder seabed substrate.



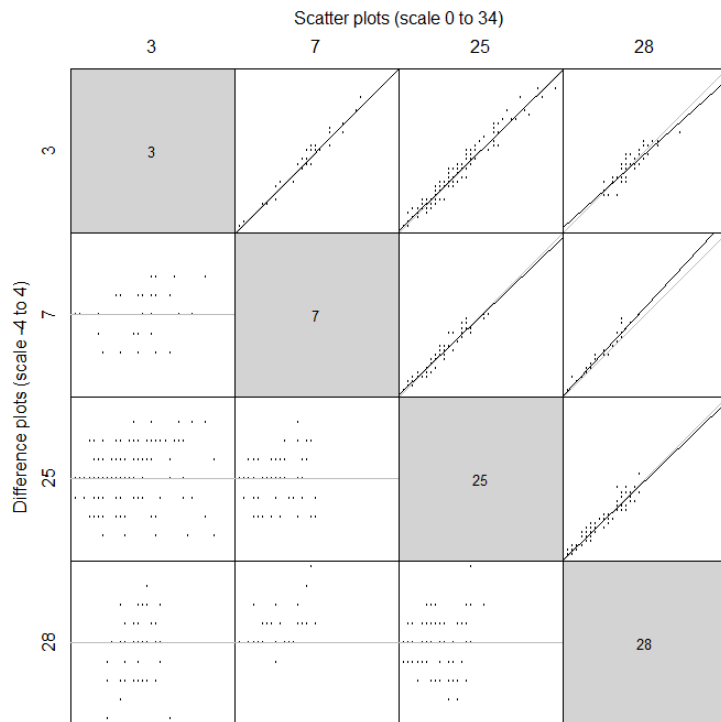
**Figure 2:** FU17 Aran grounds: UWTV Stations completed in 2016 overlaid on a heat map of *Nephrops* directed fishing activity between 2006 -2014. (+) denotes TV stations and red dots beam trawl stations.



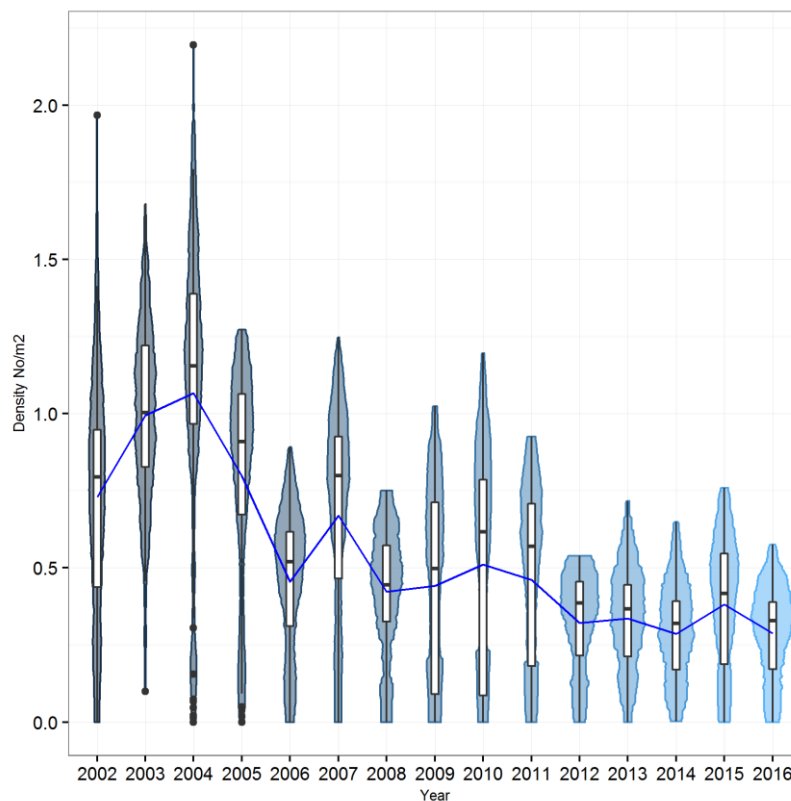
**Figure 3 :** FU17 Aran grounds: r - tool quality control plot of station 7 of the 2016 survey.



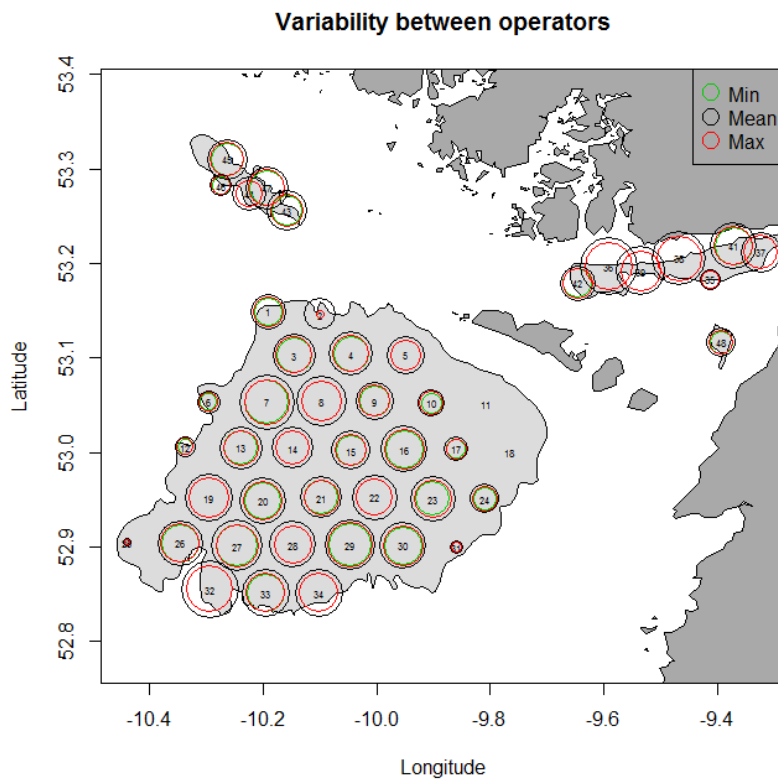
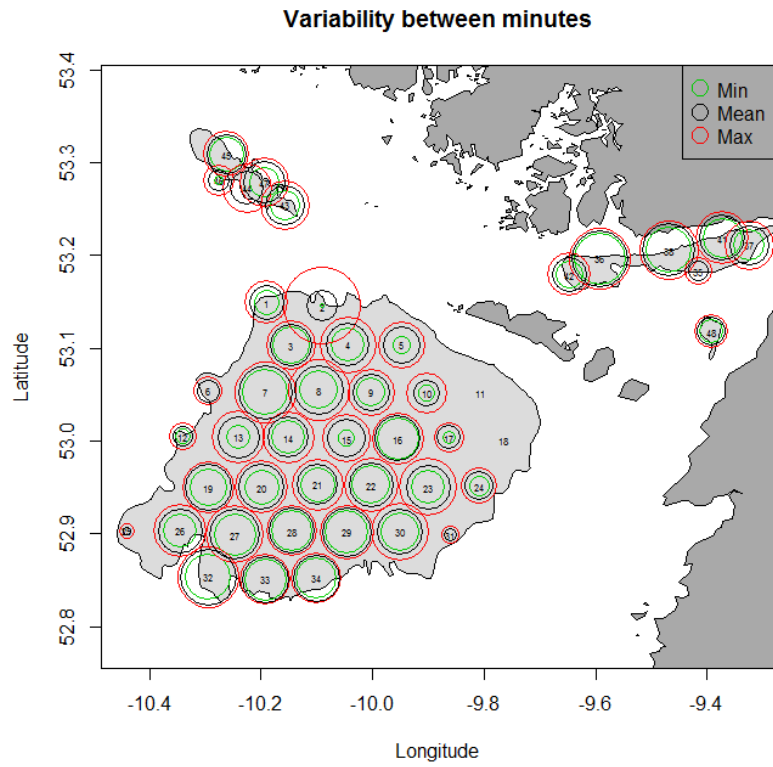
**Figure 4:** FU17 Aran grounds: 2016 Counting performance against the reference counts as measured by Lin’s CCC for FU17 “Aran grounds”. Each panel represents an individual. The x-axis (from left to right), all stations pooled, high density, low density, moderate density and visibility good.



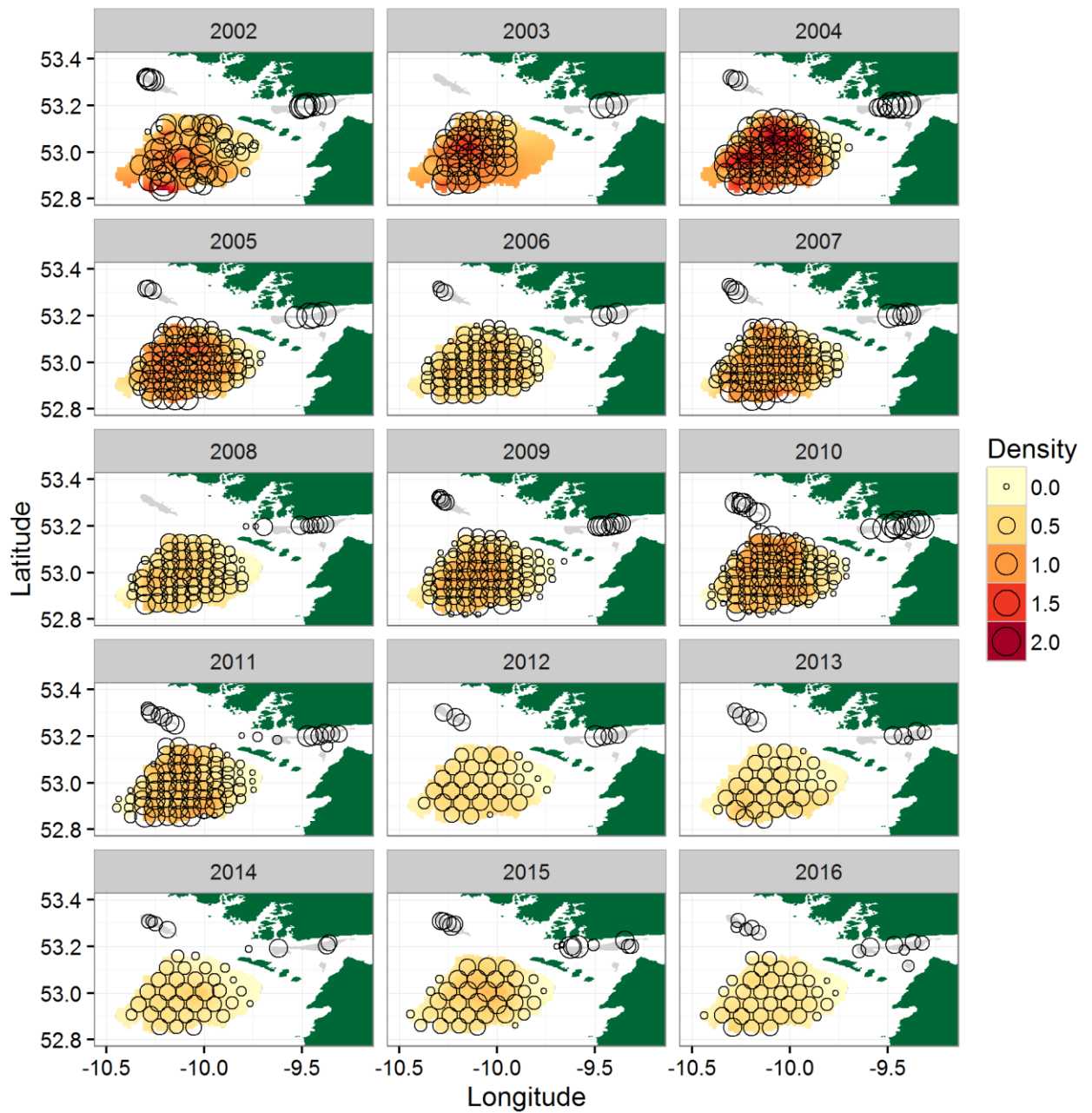
**Figure 5:** FU17 Aran grounds: Scatter plot analysis of counter correlations for the 2016 survey.



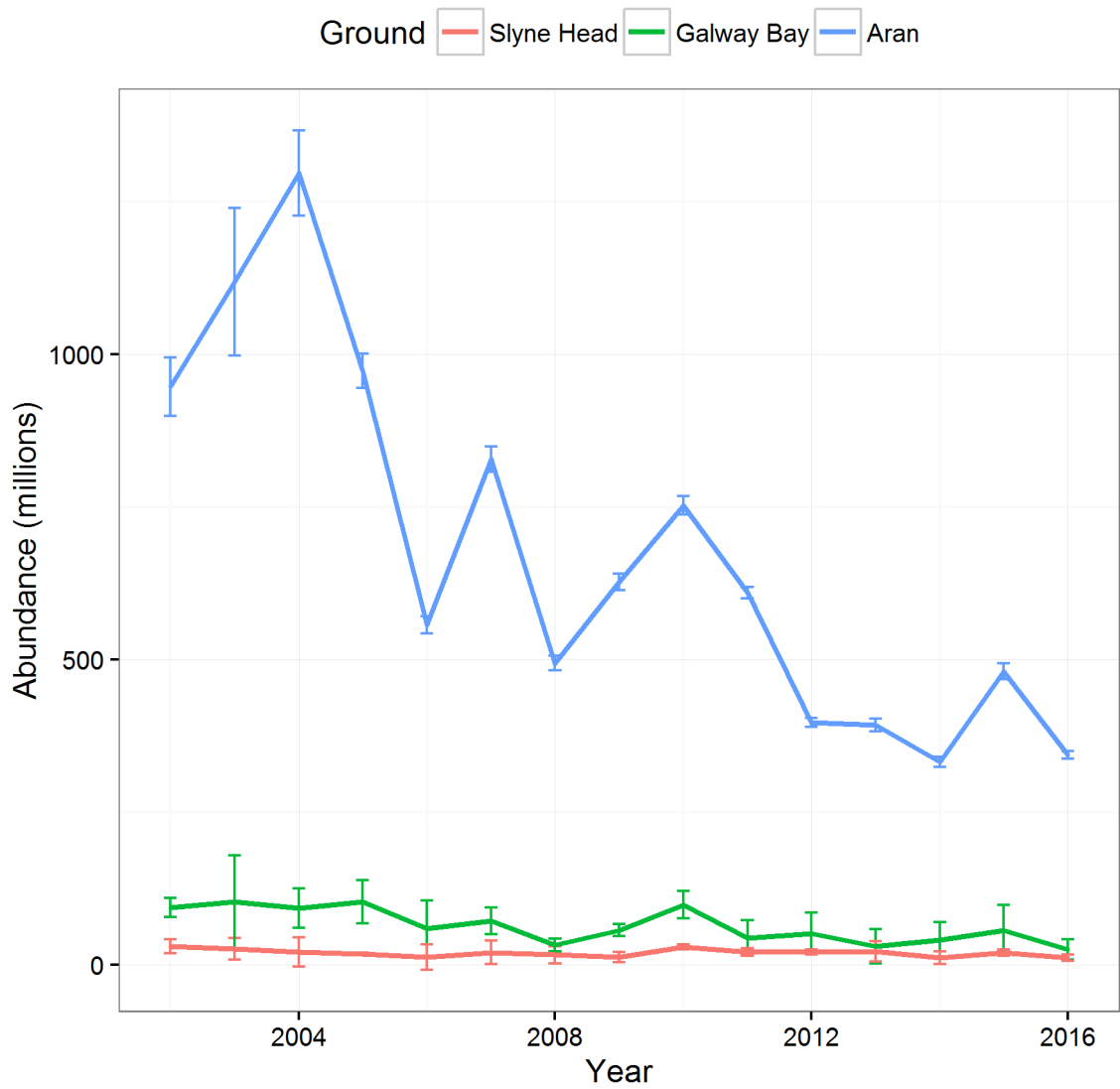
**Figure 6:** FU17 Aran grounds: Violin and box plot a of adjusted burrow density distributions by year from 2006-2016. The blue line indicates the mean density over time. The horizontal black line represents the median, white box is the inter quartile range, the black vertical line is the range and the black dots are outliers.



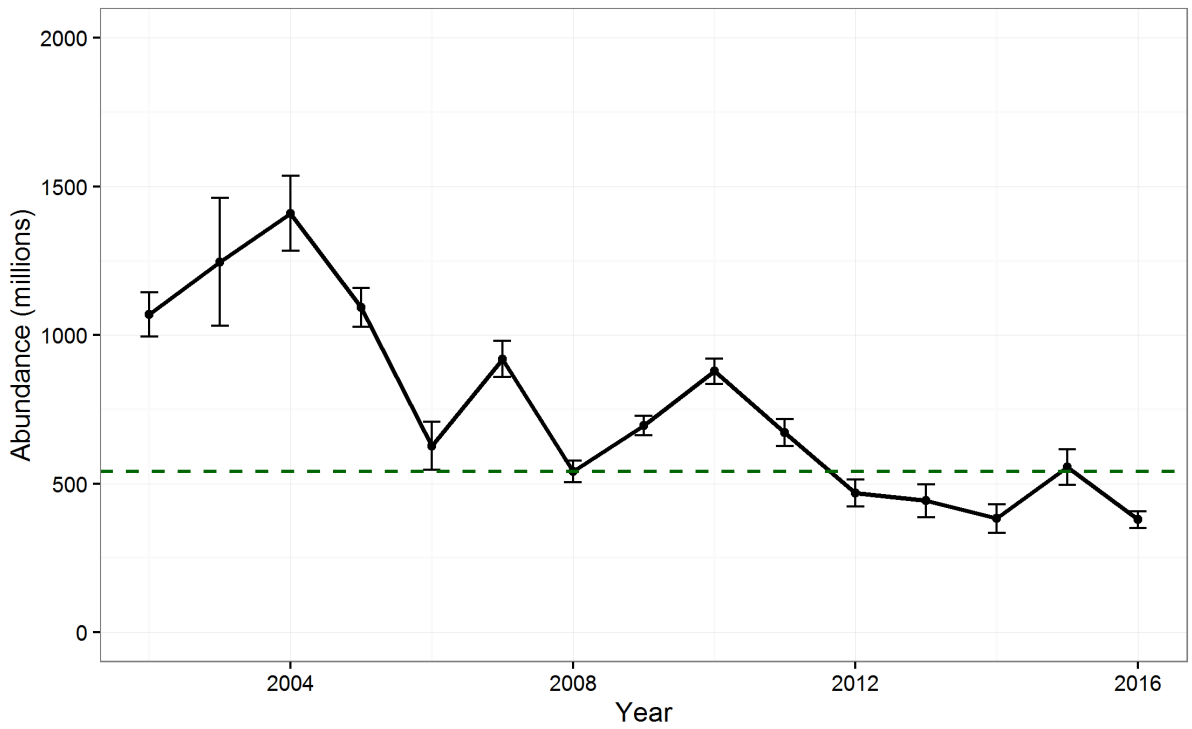
**Figure 7:** FU17 Aran grounds: Plot of the variability in density between minutes (top panel) and between operators (counters) (bottom panel) for each station in 2016.



**Figure 8:** FU17 Aran grounds: Contour plots of the krigged density estimates by year from 2002 (top left) - 2016 (bottom left).

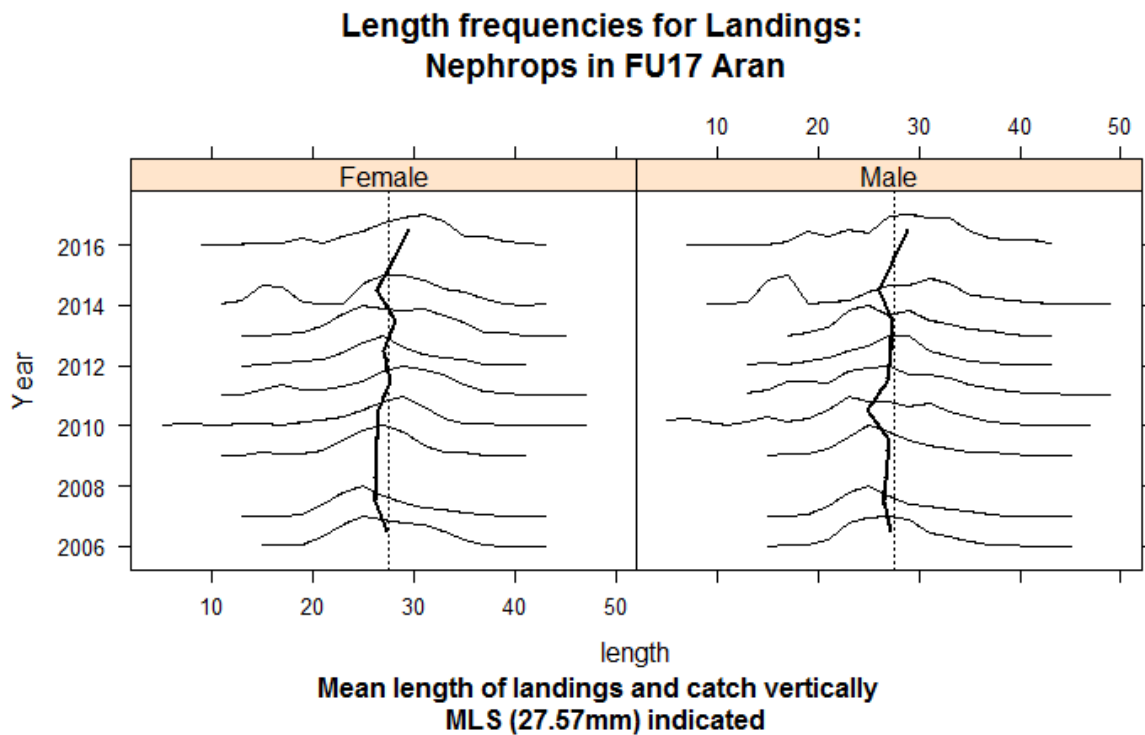


**Figure 9:** FU17 Aran grounds: Time series of abundance estimates for the Aran Grounds, Galway Bay and Slyne Head (error bars indicate 95% confidence intervals).

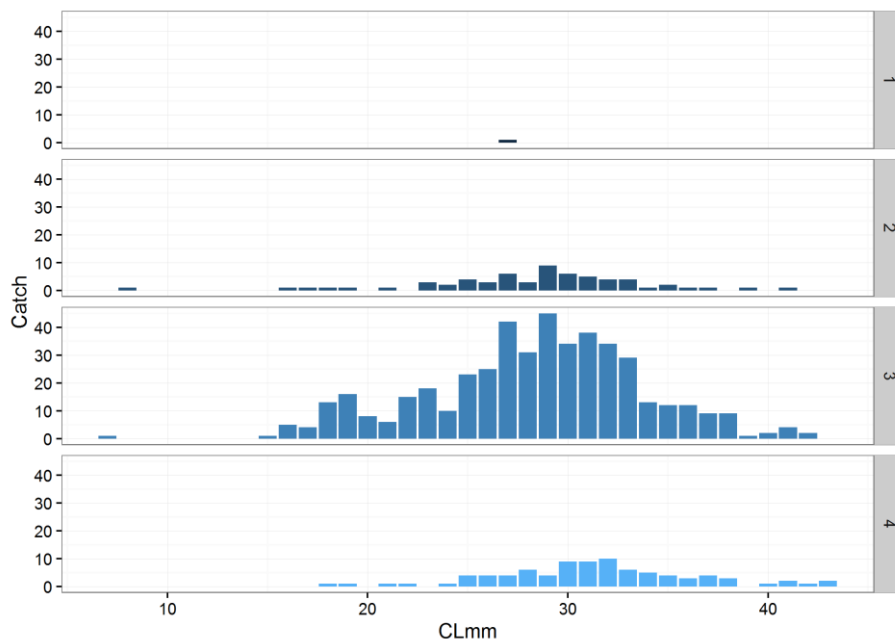


**Figure 10:** FU17 Aran grounds: Time series of total abundance estimates for FU17 (error bars indicate 95% confidence intervals) and  $B_{\text{trigger}}$  (540 million) is dashed green line.

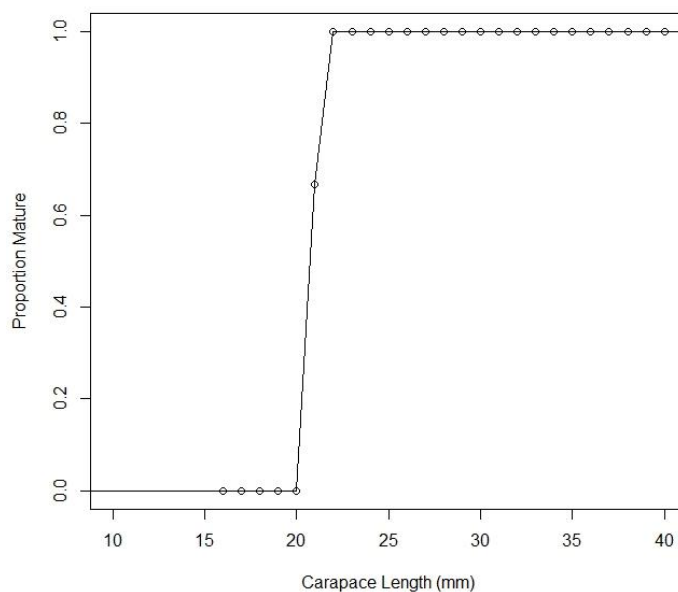




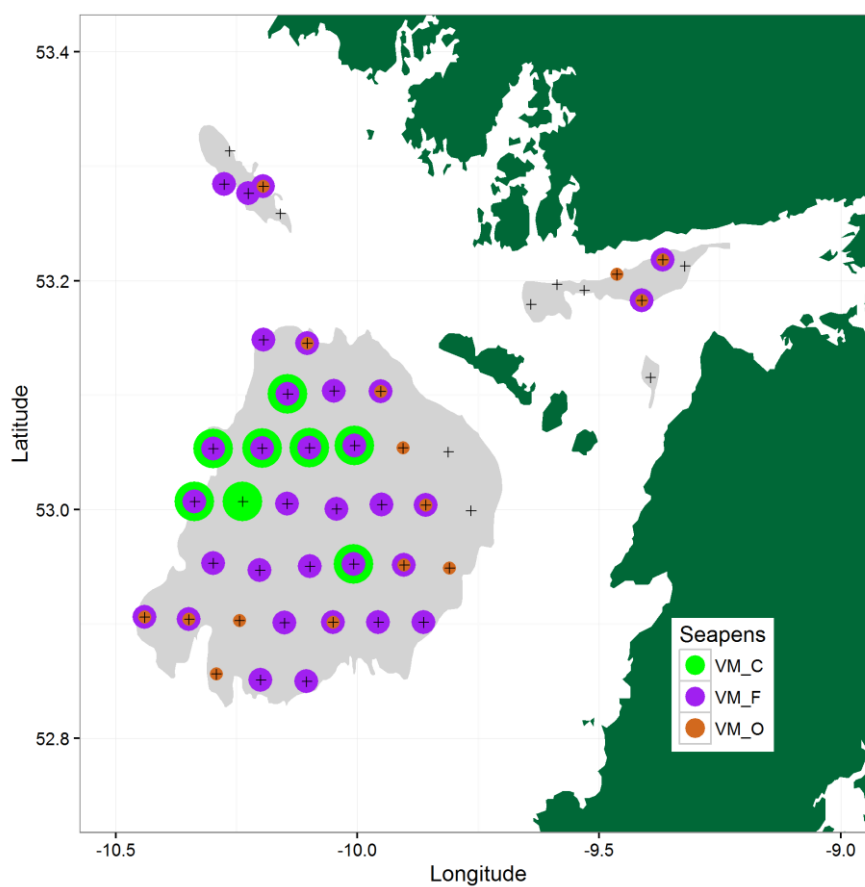
**Figure 11:** FU17 Aran grounds: Standardised length frequency distributions for male and female *Nephrops* caught using beam trawl during 2006 to 2016 UWTV surveys on the “Aran Grounds” (except 2008 and 2015).



**Figure 13:** FU17 Aran grounds: 2016 *Nephrops* length frequencies by haul.



**Figure 13:** FU17 Aran grounds: Female *Nephrops* maturity ogive based on beam trawl catches in 2016 ( $L_{50}$  estimate  $\sim 21$  CL mm).



**Figure 14:** FU17 Aran grounds: 2016 stations where *Virgilaria mirabilis* (VM) were identified and classified according to abundance key - occasional (O), frequent (F), common (C). (+) denotes TV stations with no sea-pen observations.

**Table 1:** FU17 Aran grounds: Area calculations for Aran grounds, Galway Bay and Slyne Head *Nephrops* grounds in ArcGIS10.

Ground	Area (km <sup>2</sup> )
Aran	1202
Galway Bay	79
Slyne Head	39.1
Total	1320.1

**Table 2:** Key for classification of seapen abundance as used on Irish UWTV surveys.

Number/Min  
 Common 20-200  
 Frequent 2-19  
 Ocasional <2

**Species**

*Virgularia mirabilis*

*Pennatula phosphorea*

*Funiculina quadrangularis*

Sea Pens								
<i>V. mirabilis</i>			<i>P. phosphorea</i>			<i>F. quadrangularis</i>		
C	F	O	C	F	O	C	F	O

**Table 3:** FU17 Aran grounds: Overview Aran of geostatistical results from 2002-2016.

Year	Number of Stations	Mean Density (burrows/m <sup>2</sup> )	Estimation Standard Deviation	Area (km <sup>2</sup> )	Geostatistical abundance estimate (millions of Burrows)	CV on Burrow estimate
2002	49	0.79	0.17	1196	947	3%
2003	41	0.94	0.09	1196	1118	6%
2004	64	1.08	0.27	1196	1297	3%
2005	70	0.81	0.12	1196	972	2%
2006	67	0.46	0.06	1196	556	3%
2007	71	0.69	0.12	1196	828	2%
2008	63	0.41	0.05	1196	494	3%
2009	82	0.52	0.1	1196	627	2%
2010	87	0.63	0.1	1196	752	2%
2011	76	0.51	0.09	1196	609	2%
2012	31*	0.33	0.03	1196	397	3%
2013	31*	0.33	0.03	1196	390	4%
2014	33*	0.28	0.03	1196	332	4%
2015	34*	0.40	0.06	1197	480	4%
2016	34*	0.29	0.03	1196	343	3%

**Table 4:** FU17 Aran grounds: Summary statistics for the Galway Bay and Slyne Head *Nephrops* grounds from 2002-2016.

Year	Ground	Number of stations	Mean Adjusted Density (burrow/m <sup>2</sup> )	CViid (Relative SE)	Area (km <sup>2</sup> )	Raised abundance estimate (million burrows)	Upper CI on abundance	Lower CI on abundance
2002	Galway Bay	7	1.18	7%	78.966	93.1	105.9	80.3
2003	Galway Bay	3	1.3	16%	78.966	102.6	155.7	49.6
2004	Galway Bay	8	1.17	14%	78.966	92.2	119.1	65.3
2005	Galway Bay	4	1.3	11%	78.966	103	130	76
2006	Galway Bay	3	0.74	9%	78.966	58.8	90.4	27.2
2007	Galway Bay	5	0.91	8%	78.966	71.8	89	54.6
2008	Galway Bay	5	0.4	4%	78.966	31.6	39.9	23.3
2009	Galway Bay	8	0.71	4%	78.966	56.3	64.6	48
2010	Galway Bay	10	1.24	11%	78.966	97.6	116.5	78.7
2011	Galway Bay	6	0.55	12%	78.966	43.2	67.1	19.4
2012	Galway Bay	4	0.64	10%	78.966	50.9	76.9	24.9
2013	Galway Bay	5	0.37	10%	78.966	29.6	52	7.2
2014	Galway Bay	3	0.5	6%	78.966	39.8	60.6	19
2015	Galway Bay	5	0.71	15%	78.966	55.8	88.8	22.8
2016	Galway Bay	7	0.32	7%	78.966	25.1	41.8	8.4
2002	Slyne Head	5	0.76	8%	39.146	29.8	38.9	20.7
2003*	Slyne Head	0	0.65	0%	39.146	25.3	38.1	12.4
2004	Slyne Head	3	0.53	10%	39.146	20.8	37.4	4.2
2005	Slyne Head	3	0.44	1%	39.146	17.4	18.6	16.2
2006	Slyne Head	3	0.3	9%	39.146	11.8	26.3	-2.6
2007	Slyne Head	4	0.51	12%	39.146	19.8	34.3	5.3
2008*	Slyne Head	0	0.41	0%	39.146	16	26.7	5.2
2009	Slyne Head	6	0.31	7%	39.146	12.2	19.2	5.1
2010	Slyne Head	7	0.73	4%	39.146	28.7	32.3	25.1
2011	Slyne Head	7	0.51	5%	39.146	20	25.1	14.8
2012	Slyne Head	3	0.52	2%	39.146	20.5	23.3	17.7
2013	Slyne Head	4	0.54	10%	39.146	21.1	33.8	8.3
2014	Slyne Head	4	0.28	6%	39.146	11	18.8	3.2
2015	Slyne Head	5	0.5	4%	39.146	19.6	24	15.2
2016	Slyne Head	4	0.3	3%	39.146	10.8	16.0	5.5

\* mean density estimated

**Table 5:** FU17 Aran grounds: Summary of benthic catch by tow in weight (kg) and number from 2016 fishing operations.

Species	Tow1		Tow2		Tow3		Tow4	
	Weight (kg)	Number	Weight (kg)	Number	Weight (kg)	Number	Weight (kg)	Number
<i>Antalis spp</i>					0.002	45	0.06	1870
<i>Aphrodite aculeata</i>							0.056	2
<i>Armina loveni</i>							0.006	4
<i>Ascophyllum spp</i>			0.042	3				
<i>Asterias rubens</i>			0.022	1				
<i>Astropecten irregularis</i>			0.009	1	0.016	2		
<i>Broken Shell</i>	0.0175		0.044		0.42		0.154	
<i>Carcinus Maenas</i>	0.0232	1						
<i>Crangon spp</i>	0.0232	69	0.036	49	0.032	83	0.13	32
<i>Dichelopandulus bonneri</i>	0.0015	1	0.0013	1				
<i>Eledone cirrhosa</i>	0.07	3	0.0165	1	0.176	2		
<i>Fucus Spp</i>	0.0044	1	0.009	1			0.004	2
<b><i>Goneplax rhomboides</i></b>							<b>0.011</b>	<b>1</b>
<i>Hyalina Spp</i>	0.0006	3	0.002	7	0.001	5	0.004	4
<i>Hydroid Spp</i>	0.348		0.005					
<i>Luidia Ciliaris</i>			0.078	1				
<i>Lunatia spp</i>	0.131	61	0.131	61	0.14	79	0.14	81
<i>Munida rugosa</i>	0.0028	2						
<b><i>Nephrops norvegicus</i></b>	<b>0.0128</b>	<b>1</b>	<b>1.0351</b>	<b>62</b>	<b>7.129</b>	<b>462</b>	<b>1.719</b>	<b>86</b>
<i>Nucula nucleus</i>	0.054	25			0.006	6	0.006	4
<i>Pontophilus spinosa</i>	0.0014	2	0.002	3	0.014	19	0.008	13
<i>Processa spp</i>					0.004	10	0.062	45
<i>Sepioida Spp</i>	0.0004	1	0.006	4	0.008	1		
<i>Solenocera membranosa</i>			0.001	1	0.02	12	0.462	365
<b><i>Virgilaria mirabilis</i></b>	<b>0.002</b>	<b>1</b>	<b>0.001</b>	<b>1</b>	<b>0.001</b>	<b>5</b>	<b>0.005</b>	<b>7</b>
<i>Weed</i>					0.01	1		
<b>Total</b>	<b>0.693</b>	<b>171</b>	<b>1.441</b>	<b>197</b>	<b>7.979</b>	<b>732</b>	<b>2.827</b>	<b>2516</b>

**Table 6:** FU17 Aran grounds: Summary of fish catches by tow in weight (kg) from 2016 fishing operations.

Species	Weight (kg)			
	Tow1	Tow2	Tow3	Tow4
<i>ARGENTINA SPHYRAENA</i>	0.028	0.032	0.096	0.02
<i>CALLIONYMUS LYRA</i>	0.004	0.208	0.022	0.04
<i>CALLIONYMUS MACULATUS</i>			0.02	0.01
<i>EUTRIGLA (CHELIDONICTHYS) GURNARDUS</i>	0.002	0.002		0.001
<i>GADICULUS ARGENTEUS</i>				0.004
<i>GAIDROPSARUS VULGARIS</i>	0.012		0.004	
<i>GLYPTOCEPHALUS CYNOGLOSSUS</i>	0.252	1.024	0.7	0.236
<i>GOBIES</i>	0.001			
<i>HIPPOGLOSSOIDES PLATESSOIDES</i>	0.216	0.254	0.394	0.278
<i>LEPIDORHOMBUS WHIFFIAGONIS</i>	1.056	1.272	1.368	3.048
<i>LOPHIUS BUDEGASSA</i>	0.166	0.232	1.472	0.52
<i>LOPHIUS PISCATORIUS</i>	0.574	0.156	0.15	
<i>MELANOGRAMMUS AEGLEFINUS</i>	0.012	0.014	0.006	
<i>MERLANGIUS MERLANGUS</i>	0.034	0.022	0.122	0.432
<i>MERLUCCIIUS MERLUCCIIUS</i>	0.094	0.106	0.134	0.458
<i>MICROCHIRUS VARIEGATUS</i>	0.022	0.122	0.06	0.088
<i>MICROSTOMUS KITT</i>			0.14	
<i>SOLEA SOLEA</i>	0.002	0.004	0.002	0.002
<i>SPRATTUS SPRATTUS</i>	0.004	0.006	1.074	0.162
<i>TRISOPTERUS ESMARKI</i>	0.026	0.014	0.018	0.046
<i>TRISOPTERUS MINUTUS</i>	0.003	0.01	0.002	0.002
Total Weight (kg)	4.074	4.336	2.109	2.478

**Table 7:** Inputs to short-term catch option table.

Year	Landings in number	Total discards in number *	Removals in number	UWTV abundance estimates	95% conf. intervals	Harvest rate	Mean weight in landings	Mean weight in discards	Discard rate	Dead discard rate
	millions	millions	millions	millions	millions	%	grammes	grammes	%	%
2002	55	18	68	1070	69	6.3	21.2	10.8	25%	20%
2003	44	18	58	1246	186	4.6	21.2	10.0	29%	24%
2004	29	11	38	1410	113	2.7	18.1	9.9	28%	23%
2005	42	20	57	1092	56	5.2	18.4	9.2	32%	26%
2006	NA	NA	50	627	60	7.9	NA	NA	NA	NA
2007	NA	NA	57	920	52	6.2	NA	NA	NA	NA
2008	48	22	65	541	31	12.0	21.9	11.2	31%	26%
2009	25	9	32	696	29	4.6	25.1	13.6	28%	22%
2010	37	15	49	879	38	5.6	25.2	14.7	29%	23%
2011	32	9	38	672	39	5.7	20.6	10.8	21%	17%
2012	60	8	66	468	36	14.4	20.9	10.4	11%	9%
2013	60	12	69	441	46	15.7	21.6	10.7	17%	13%
2014	34	5	38	383	37	9.8	22.6	9.6	13%	10%
2015	18	2	19	556	50	3.4	20.9	9.1	8%	6%
2016				379	28					

**Table 8:** FU17 Aran grounds: The basis for the catch options for 2016.

Variable	Value	Notes
Stock abundance	379 million individuals	UWTV Survey 2016
Mean weight in landings	22.3 g	Average 2008–2015.
Mean weight in discards	11.3 g	Average 2008–2015.
Discard rate	12.7%	Average 2013–2015 (proportion by number). Calculated as discards/(landings + discards).
Discard survival rate	25%	Only applies in scenarios where discarding is allowed.
Dead discard rate	9.8%	Average 2013–2015 (proportion by number). Calculated as dead discards divided by dead removals (landings + dead discards). Only applies in scenarios where discarding is allowed.

**Table 9:** FU17 Aran grounds: Short-term management option table giving catch options for 2017 using the 2016 UWTV survey estimate.

Catch options assuming zero discards

Rationale	Basis	Total catch	Wanted catch*	Unwanted catch*	Harvest rate**
MSY approach	MSY approach	473	441	32	6.0%
Other options	$F_{MSY}$	675	629	46	8.5%
	$F_{2015}$	270	252	18	3.4%

\* “Wanted” and “unwanted” catch are used to describe *Nephrops* that would be landed and discarded in the absence of the EU landing obligation, based on the average estimated discard rates for 2013–2015.

\*\* Applied to total catch.

Catch options assuming discarding is allowed

Rationale	Basis	Total catches	Dead removals	Landings	Dead discards	Surviving discards	Harvest rate*
		L+DD+SD	L+DD	L	DD	SD	for L+DD
MSY approach	MSY approach	489	481	456	25	8	6.0%
Other option	$F_{MSY}$	697	685	649	36	12	8.5%

\* Applied to dead removals.