



CELEBRATING 40 YEARS

2013 ANNUAL REPORT



Ms. FOUNDATION
FOR WOMEN



“ The art of behaving effectively is behaving as if everything we do matters—because we can’t know what will change the future. ”

-Gloria Steinem



MISSION STATEMENT

The Ms. Foundation for Women
builds women's collective power to
realize a nation of justice for all.

*For forty years,
the Ms. Foundation for Women
has led the charge for women's rights.
We were at the frontlines in 1973
and continue to fight for
equality, justice and freedom today.*

DEAR FRIENDS:

The Ms. Foundation for Women is celebrating 40 years of work on behalf of women. We have been at the forefront of the women's movement and are poised to lead the movement even further into the future. The moment is now, and it is your generosity and involvement that makes this work possible.

In the 2012 presidential election, women made the difference in the direction of our country. Fifty-three percent of balloted voters were women. During his State of the Union address, President Obama openly stated what we have long known: "I believe when women succeed, America succeeds."

The Ms. Foundation for Women impacted the women's movement in 2013 by supporting grassroots women's organizations that do the cutting-edge work no one else is funding and by going after issues that no one else is touching.

Among developed nations, the United States ranks 47th for gender equality. That shameful international ranking is based on access to jobs, education levels, political representation and life expectancy. Women of color and low-income women are disproportionately affected. We can do better!

Nationally the Ms. Foundation for Women is working to improve women's economic power, access to health care and safety.

In 2013 Ms. Foundation for Women grantees National Domestic Workers Alliance and Jobs with Justice were forces behind the Department of Labor's decision that care workers are now entitled to receive federal minimum wage and overtime pay protections. This is a huge victory for these previously unprotected workers.

Our grantees were influential in securing provisions of the Affordable Care Act that provide women with birth control coverage with no co-pay, which allows low-income women to take control of their future and results in healthier families and fewer unintended pregnancies.

In 2013 the Ms. Foundation for Women conducted the first Disability and Child Sexual Abuse National Roundtable, bringing together activists, advocates and survivors to strategize on how to protect disabled children, an especially vulnerable population, from sexual abuse.

I am proud to share with you this report on all that the Ms. Foundation for Women has accomplished this year. I hope you join me in sharing the pride that comes from being a part of this movement and the work that transforms women's lives every day,

IN SOLIDARITY,



Cathy Raphael, *Chair of the Board*
Ms. Foundation for Women



Cathy Raphael pictured with Gloria Steinem



VALUES

SAFETY

Since our inception, the Ms. Foundation has worked in partnership with grassroots, state and national organizations to end gender-based violence. Today our work is focused on stopping such violence before it begins by building a movement to end child sexual abuse. One in four women were sexually abused as children. We will continue to advocate for their safety until this is no longer our reality.

HEALTH

The Ms. Foundation knows that if women can't access quality health care they cannot be truly free. That is why our women's health program supports access to reproductive justice, rights and health—with an emphasis on access to contraception and abortion—for all women in the U.S., especially those who experience structural barriers to access.

ECONOMIC JUSTICE

We believe that it's not enough to treat the symptoms of women's inequality—we have to fix the entire system. We target and tear down entrenched barriers that stand in the way of each and every woman's full participation in the economic life of this country. Our current economic justice program supports organizations working to create a nation where affordable child care and quality child care jobs are available for all.

WINS FOR HEALTH

Our grantees fought for provisions of the Affordable Care Act that provide women with birth control coverage with no co-pay, which significantly increases the affordability of this key preventive health measure, allows women to take control of their futures, and results in healthier families and fewer unintended pregnancies.

Grantee **WV Free** was active in two significant policy wins. First, they advocated for the passage of SB 22, legislation that ensures policy holders' dependent daughters will have access to insurance coverage for their maternity care. Second, they pushed for Governor Earl Tomblin to expand Medicaid eligibility, providing financial access to reproductive health care for a greater number of women.

In California, grantees **ACT for Women and Girls** and **California Latinas for Reproductive Justice**, worked in coalition to pass AB 154, a bill that allows more medical professionals, including nurses and midwives to perform first trimester abortions. The bill was signed by Governor Brown in October. It represents one of the most significant pieces of legislation to expand abortion access in years, bucking the regressive trend of restrictive measures nationwide.

In New Mexico, grantee **Young Women United** helped to pass HB 300, a law that helps young students complete their high school education by requiring school districts to provide excused absences for expectant and parenting students. This is the first law of its kind in recent history, and represents a huge victory for reproductive justice, given the stigma of teen pregnancy and the fact that NM currently has the highest teen pregnancy rate in the country.



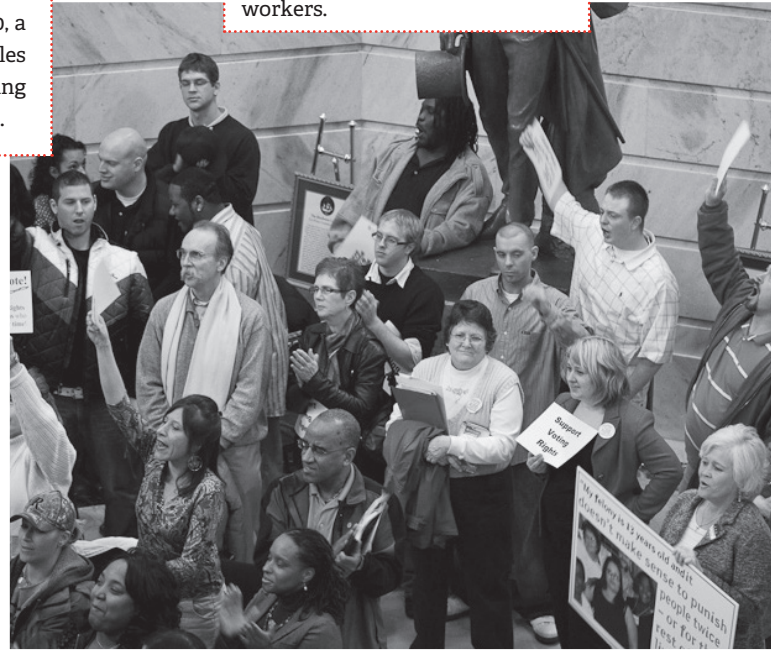


ECONOMIC
JUSTICE FOR
WOMEN

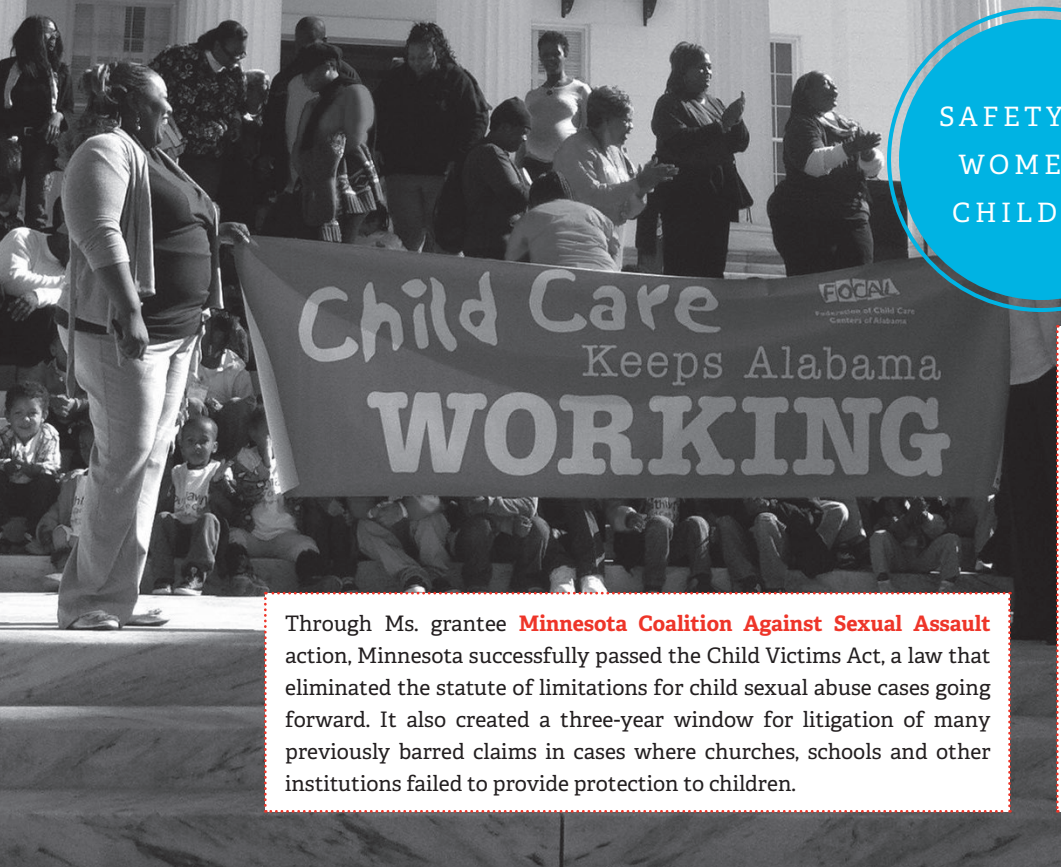
Grantee **Parent Voices, of California Child Care Resource & Referral Network** helped successfully pass Proposition 30, a tax increase on the wealthiest citizens and a temporary sales tax increase to fund public education and prevent devastating budget cuts at California schools, colleges and universities.

Ms. facilitated a panel discussion of the Democratic Caucus on the minimum wage and low-wage workers.

Ms. co-released a new report, "The Third Shift: Child Care Needs and Access in the Restaurant Industry," with grantee **Restaurant Opportunities Centers United (ROC United)** at the National Press Club along with the White House Council on Women and Girls.



SAFETY FOR
WOMEN &
CHILDREN



Through Ms. grantee **Minnesota Coalition Against Sexual Assault** action, Minnesota successfully passed the Child Victims Act, a law that eliminated the statute of limitations for child sexual abuse cases going forward. It also created a three-year window for litigation of many previously barred claims in cases where churches, schools and other institutions failed to provide protection to children.

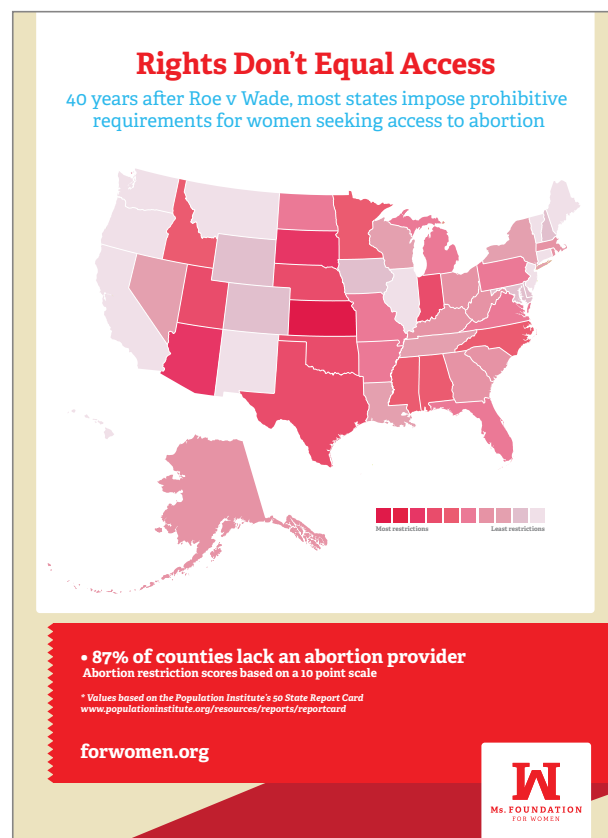
The New Jersey Department of Children and Families agreed to adopt the sexual abuse safe-child standards put forth by our grantee **Prevent Child Abuse New Jersey** as a condition of eligibility for any youth-serving organizations that apply for state funding. These sexual abuse safe-child standards are a preventive tool for use by organizations working with youth and children. Based on recent research and studies, organizations can minimize the risk of child sexual abuse in their communities by implementing these standards.

The Ms. Foundation's Reproductive Justice program promotes equity in access to abortion, reproductive health services and sexual health services for all women and families.

EQUITY IN ACCESS TO ABORTION AND CONTRACEPTION

2013 was another intensely political year for women's reproductive and sexual health. State legislatures devoted significant time and attention to chipping away and further restricting women's reproductive health care access. During the first three months of the calendar year alone, legislators introduced 694 reproductive health-related provisions. About half (47 percent) of all reproductive health measures sought to restrict access to abortion, ban abortion outright and declare personhood at the moment of conception.

Through the Ms. Foundation for Women's focus area, Equity in Access to Abortion and Contraception, grantees are actively working to mobilize communities most affected by restrictive reproductive health legislation, cultural stigma, and systemic discrimination. Ms. continues to invest deeply in organizations working at the state and local level, particularly in states where growing communities of color represent significant demographic shifts. Grantees were selected based upon readiness to engage more deeply in community organizing and civic engagement strategies with a longer-term view of social change. In addition, our new strategic communications capacity building programs will help support and position our grantees to develop stronger strategic communications to reach deeper into their communities, communicate more powerfully with a broader set of allies, and sustain a longer-term, proactive vision for all women and families.



40 YEARS OF PROGRESS

1978

Anticipating the emergence of the anti-abortion backlash, the Ms. Foundation begins working on reproductive health, rights and access, with the Pro-Choice Project for Reproductive Freedom

1996

Ms. Foundation formalizes the Women and AIDS Fund, the first philanthropic fund dedicated to supporting programs for women and families dealing with AIDS and HIV

1985

Ms. Foundation introduces a proactive approach to reproductive rights and access and invests in organizing in communities across the country, including religious communities, rural communities and communities of color



ENSURING ACCESS TO REPRODUCTIVE AND SEXUAL HEALTH SERVICES

The Patient Protection and Affordable Care Act is a historic opportunity to increase access to essential reproductive and sexual health services for all women. State implementation of health care reform is especially critical to achieving greater equity in access to reproductive and sexual health services and would represent a significant step forward for vulnerable low-income women, women of color and immigrant women.

The Ms. Foundation for Women introduced a campaign called Women 4 Health Care to encourage women to enroll in the Affordable Care Act. We created a toolkit that supports advocates working in key states to raise the visibility of reproductive and sexual health as integral to general health care and positively influence the political and cultural landscape on reproductive and sexual health for all women. Our grantees have been active in tabling, presentations, events at hospitals, fairs, phone banking and door-to-door canvassing, as well as intimate house parties. Many are following up with the women they've connected with to make sure they are linked to navigators and in-person assisters to help them enroll. Our fact sheets describe in plain language how immigrant families are affected by the Affordable Care Act so that they can access health care that is vital to women.

2002

Ms. Foundation initiates a program to build support for comprehensive sexuality education, at the state level (where most of the attacks on sexuality education occur)

2011

Ms. Foundation and key partners fight for—and win—the inclusion of coverage for women's preventive health services in the Patient Protection and Affordable Care Act

2008

Ms. Foundation establishes its Southern Strategy, addressing the need for a progressive base for women's health, safety and economic security in the South

BUILDING A MOVEMENT TO PREVENT CHILD SEXUAL ABUSE

With increased public attention comes a growth in understanding that child sexual abuse is an epidemic that takes place within spaces we consider safe and is committed by people whom we consider trustworthy. The Ms. Foundation for Women knows that those affected by child sexual abuse extend beyond the scope of media headlines, and since 1 in 4 women have suffered from child sexual abuse, it is an issue for women everywhere.

Child sexual abuse is a fundamental barrier to the health and economic security of our communities and is linked to numerous other intractable social problems. Child sexual abuse is a deeply rooted, cross-cultural, cross-economic issue, and its prevention requires dramatic shifts in the way our society envisions children, family, social responsibility, power and sexuality. Real change requires thoughtful, inclusive, systemic approaches that build from the community level through to national policy, with advocates and allies at every level in between.

The Ms. Foundation implements a range of strategies to effect change. The Foundation prioritizes projects that go beyond education, awareness and training to address specific changes in policy, culture or practice related to the prevention of child sexual abuse. In addition, we support communities and organizations in building the relationships and infrastructure that are needed to grow and sustain this movement to end abuse. Our grantee partners are working in 12 states and nationally. Taken together, their range of strategies—including policy advocacy, grassroots organizing, arts activism, statewide campaigns, faith-based organizing and survivor-informed activism—has the potential to build and sustain the movement we need to prevent child sexual abuse.



40 YEARS OF PROGRESS

1973

One of the first supporters of organizations fighting violence against women, Ms. Foundation funds the first rape crisis centers, domestic violence hotlines and anti-violence movements

1981

Ms. Foundation continues to support innovative initiatives to prevent violence against women, including programs helping women with disabilities who are experiencing violence

1978

With a broader emphasis on safety, Ms. Foundation begins funding the first programs specifically naming child sexual abuse as a problem distinct from child abuse



Ensuring child sexual abuse is no longer a hidden epidemic.

1 in 4 women in the US are victims of child sexual abuse

“The Ms. Foundation for Women connects us with other organizations working to end child sexual abuse. Being connected to a national initiative greatly strengthens our efforts. The commitment by a national foundation to confront this issue is a very powerful statement.”

—James M. Hmurovich, President & CEO, Prevent Child Abuse America

1994

Through the dedication of the Ms. Foundation and our grantees, the Violence Against Women Act passes, providing federal funding and support for programs combating violence against women

2009

Launched the Child Sexual Abuse Prevention Program, a new, national initiative to strengthen the movement to end child sexual abuse—one that seeks to prevent abuse by addressing its root causes

2002

Published “Beyond Surviving: Toward a Movement to Prevent Child Sexual Abuse”

2013

Ms. Foundation brings the issue of child sexual abuse prevention to a conference on sexual assault for the first time enabling groups across the country to make the ties between child sexual abuse and its effect on women

PROMOTING EQUITABLE ACCESS TO CHILD CARE FOR LOW-WAGE WORKERS

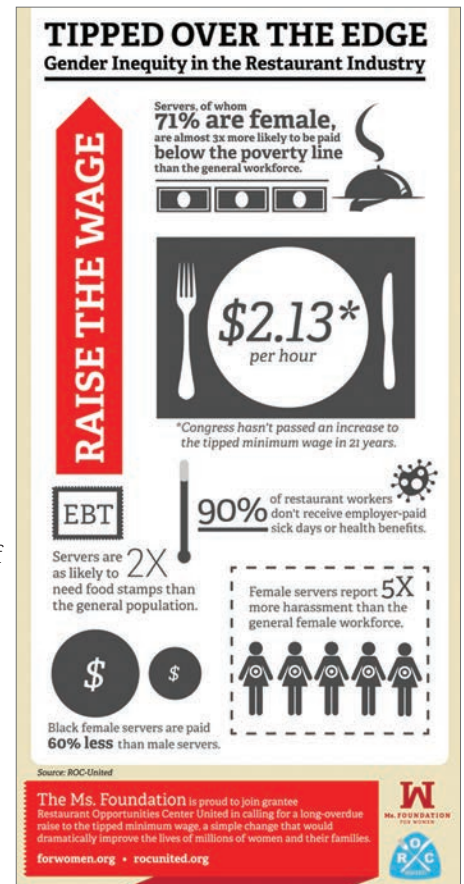
Today, working mothers are the primary breadwinners in 40 percent of households with children and 60 percent of the workforce, a milestone in U.S. history reflective of the central role that women play in families, the workforce and our economy. Although this reflects the invaluable strides made by women in the workforce, alarming inequities still exist.

Child care is extremely costly and does not fit the nontraditional working hours of most low-wage jobs. The expense and operating hours of child care centers present a structural barrier to low-wage workers who often work varying shifts and nontraditional hours, and therefore must make difficult choices between working in low-wage jobs, seizing opportunities for career advancement and relying on sub-par care.

However, these demographic shifts are happening at a time when the labor market is growing rapidly in low-wage jobs. Many of the attributes previously characteristic of women's jobs—unfair wages, part-time hours and devalued work are now characteristic of the labor market as a whole. Sub-minimum wages, a lack of benefits and lacking work support create monumental challenges for working mothers to achieve financial security and attain work/life balance.

The Ms. Foundation is working to elevate the issues faced by the large majority of people in low-wage jobs: women. Women's specific needs around work and family supports and continued experiences of inequity, harassment and other forms of workplace violence are largely neglected.

The Ms. Foundation's 2013 strategy worked to promote a broader understanding of a women's economic agenda as central to economic policy and analysis. We provided resources to low-wage worker rights organizations to better understand how to develop policy initiatives that combine workplace justice issues with family security issues.



40 YEARS OF PROGRESS

1974

Ms. Foundation begins investing in child care centers and advocating for accessibility, understanding that child care is an essential work support for women

1985

Ms. Foundation supports domestic micro-credit and small-loan programs; supports training for women in nontraditional jobs; and supports programs to help immigrant women and women of color become economically self-sufficient

1981

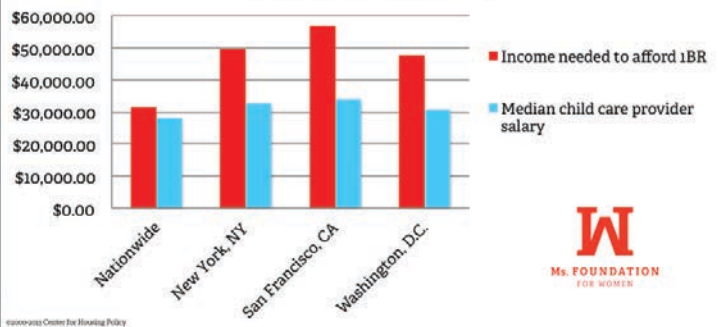
Ms. Foundation works to transform the workplace, focusing on issues like equal pay, non-discrimination and essential support services for working women

1990

Ms. Foundation helps form the Collaborative Fund for Women's Economic Development to fund innovative business and job creation projects for women of color and low-income women



Child care provider wages too low to pay for housing



1993

Ms. Foundation establishes Take Our Daughters to Work Day

1999

Ms. Foundation Collaborative Fund for Women's Economic Development receives the Presidential Award for Excellence in Microenterprise Development

2002

Ms. Foundation launches a campaign, Raise the Floor: Wages and Policies That Work for All of Us, to address the inequity of low-wage labor (the majority of which is done by women)

1997

Recognizing that women make up the large majority of the low-wage labor sector, Ms. Foundation develops the New Voices, Proactive Strategies Initiative, focusing on improving the incomes, working conditions and job security of low-wage women

2010

Ms. Foundation supports Domestic Workers United's campaign resulting in the first ever Domestic Workers' Bill of Rights in the U.S.

REPRODUCTIVE JUSTICE

ACT for Women and Girls
Visalia, California, \$30,000

California Latinas for Reproductive Justice
Los Angeles, California, \$25,000

Choice USA
Washington, District of Columbia
\$15,000

Colorado Organization for Latina Opportunity and Reproductive Rights
Denver, Colorado, \$40,000

El Pueblo
Raleigh, North Carolina, \$30,000

Kentucky Health Justice Network
Louisville, Kentucky, \$20,000

National Asian Pacific American Women's Forum
Brooklyn, New York, \$40,000

National Latina Institute for Reproductive Health
New York, New York, \$40,000

Native American Community Board
Lake Andes, South Dakota, \$30,000

Planned Parenthood Southeast
Atlanta, Georgia, \$25,000

Reproductive Justice Collective
Milwaukee, Wisconsin, \$25,000

SPARK Reproductive Justice Now
Atlanta, Georgia, \$25,000

West Virginia Free
Charleston, West Virginia, \$28,000

Young Women United
Albuquerque, New Mexico, \$40,000



Young Women United (YWU) is a community organizing project by and for young women of color in New Mexico that believes in the rights of all people to access the information, education and resources needed to make real decisions about their bodies and lives. YWU received a grant to support the development of innovative communications campaigns and support the growth of their grassroots voter base in rural communities, strengthen partner relationships and continue organizing against the structural barriers to access to reproductive health.

The grant was part of the Ms. Foundation for Women's inaugural fellowship program with Parsons The New School for Design, which paired three Parsons design students with three different Ms. grantees working to advance reproductive justice across the country.

Collaborating with Paweena Prachanronarong, M.F.A in Design and Technology, YWU designed a tool to teach health literacy to Albuquerque's young people. The final product is an interactive role-playing game that lets teenagers practice taking control of their health care. Using graphics, cartoons and video clips, the game connects players with useful resources and presents clear comprehensive sex and health education.

Northwest Health Law Advocates
Seattle, Washington, \$35,000

Oregon Foundation for Reproductive Health
Portland, Oregon, \$30,000



Oregon Foundation for Reproductive Health (OFRH) is committed to advancing reproductive rights and promoting reproductive health equity in all Oregon communities. OFRH received a grant to support its efforts to guarantee that women's preventive reproductive health is a core component of health care reform in Oregon and to implement grassroots campaigns to increase demand for preventive reproductive health care as part of new primary health care standards.

OFRH launched the groundbreaking, yet simple One Key Question® Initiative to ensure that more pregnancies are wanted, planned and as healthy as possible.

"Would you like to become pregnant in the next year?" By asking reproductive-age women that simple question, primary care clinicians can more fully support women's reproductive health needs, such as preventing an unintended pregnancy or preparing for a healthy pregnancy. The One Key Question® Initiative has been endorsed by 25 professional organizations and associations across Oregon.

Planned Parenthood Public Policy Network of Washington
Seattle, Washington, \$10,000

Raising Women's Voices—New York
New York, New York, \$35,000

West Virginia FREE
Charleston, West Virginia, \$30,000

ECONOMIC JUSTICE

Adhikaar for Human Rights
Woodside, New York, \$13,000

Coalition of Immokalee Workers
Immokalee, Florida, \$7,000



The Coalition of Immokalee Workers (CIW) is a worker-based human rights organization internationally recognized for its achievements in the fields of corporate social responsibility, community organizing and sustainable food. CIW is also a leader in the growing movement to end human trafficking due to its groundbreaking work to combat modern-day slavery and other labor abuses common in agriculture.

CIW received a grant to conduct participatory action research to evaluate and document the typical work hours of farmworkers and how scheduling challenges impact access to safe, affordable child care.

Garment Worker Center
Los Angeles, California, \$13,000



The Garment Worker Center (GWC) in Los Angeles is a worker rights organization whose mission is to organize low-wage garment workers in the fight for social and economic justice. GWC addresses the systemic problems of wage theft, unhealthy and unsafe working conditions, and the abusive and inhumane treatment faced by workers. GWC received a grant to conduct

participatory action research to study the issue of affordable and accessible child care for Los Angeles garment workers and develop organizing strategies to build more comprehensive child care programming, including partnerships with early literacy programs and child care providers.

Moore Community House
Biloxi, Mississippi, \$35,000

Restaurant Opportunities Centers United
New York, New York, \$10,000

Retail Action Project
New York, New York, \$10,000

Wider Opportunities for Women
Washington, District of Columbia
\$20,000

SAFETY

in6
Santa Clarita, California, \$14,000

California Coalition Against Sexual Assault
Sacramento, California, \$48,000

CONNECT
New York, New York, \$35,500

Kingsbridge Heights Community Center
Bronx, New York, \$35,500

Massachusetts Citizens for Children
Boston, Massachusetts, \$41,500

Minnesota Coalition Against Sexual Assault
St. Paul, Minnesota, \$41,500

National Council on Crime and Delinquency
Oakland, California, \$31,500

Oregon Abuse Advocates and Survivors in Service
Portland, Oregon, \$70,500

Peace Over Violence
Los Angeles, California, \$29,000

Ping Chong and Company
New York, New York, \$4,000

Prevent Child Abuse America
Chicago, Illinois, \$26,500

Prevent Child Abuse Maryland (a.k.a. The Family Tree)
Baltimore, Maryland, \$26,500

Prevent Child Abuse New Jersey
New Brunswick, New Jersey, \$25,500

Prevent Child Abuse North Carolina
Raleigh, North Carolina, \$60,500

Purdue University/Multicultural Efforts to End Sexual Assault
West Lafayette, Indiana, \$26,500

Samaritan Counseling Center
Lancaster, Pennsylvania, \$105,500



Samaritan Counseling Center (SCC) provides professional counseling, consultation and education while respecting and integrating the personal and spiritual values of their clients. SCC sponsors the Safe Church Project, which supports congregations in developing policies to protect children from sexual abuse.

SCC received a two-year grant to deepen their work with congregations on the Safe Church Project, developing a webpage linking to safe congregations in the community and expanding the successful project to engage more congregations beyond the region by developing an intensive training program and piloting it in strategically selected areas throughout the U.S.

Tewa Women United
Santa Cruz, New Mexico, \$31,500

Vera Institute of Justice
New York, New York, \$91,500



Vera Institute of Justice combines expertise in research, demonstration projects and technical assistance to help leaders in government and civil society improve the systems people rely on for justice and safety. Its projects and reform initiatives, typically conducted in partnership with local, state or national officials, are located across the United States and around the world. Vera Institute of Justice received a grant to continue advancing efforts to end sexual abuse of children with disabilities through their Center for Victimization and Safety and to convene a national working group of leading experts working at the intersection of child sexual abuse and disabilities to develop and implement a national strategy that will address gaps in awareness, policy, intervention and prevention efforts to end child sexual abuse against children with disabilities.

**PRESIDENT'S
DISCRETIONARY GRANTS**

Brookline Community Foundation
Brookline, MA, \$1,000

GirlSpring, Inc.
Birmingham, AL, \$5,000

**New Immigrant Community
Empowerment**
Jackson Heights, NY, \$500

University of Cincinnati Foundation
Cincinnati, OH, \$2,500

GLORIA STEINEM FUND

Bella Abzug Leadership Institute
New York, NY, \$2,000

To support the Bella Abzug Leadership Intensive Summer Debate and Global

Local Leadership Institute, which teaches debate and writing skills, as well as policy research and global/local advocacy skills.

Feminist Majority Foundation
Beverly Hills, CA, \$30,000

To support Global Reporting in Ms. Magazine, which aims to inspire and empower feminists to take action to achieve equality and global justice.

Girls Speak Out Foundation
Santa Rosa, CA, \$1,500

To provide support to work on the filing of trademark name to launch Girls4GirlsWorldwide.

One Liberia Radio
New York, NY, \$10,000

To provide general operating support to establish quality information on health, environment, education, agriculture and entrepreneurship through journalism and radio programs.

SisterSong, Inc.
Atlanta, GA, \$10,000

To provide general operating support to assist with leadership development, strategic planning and leadership transition.

Spelman College
Atlanta, GA, \$5,000

To provide general support to the Women's Research and Resource Center to nurture students' critical thinking about human rights, health care and leadership development through research and advocacy.

OMA FUND

After Tiller
Brooklyn, NY, \$2,000

Ibis Reproductive Health
Cambridge, MA, \$10,000

Media Voices for Children
Vineyard Haven, MA, \$3,000

**National Advocates for
Pregnant Women**
New York, NY, \$5,000

National Network of Abortion Funds
Boston, MA, \$20,000

Nursing Students for Choice
St. Paul, MN, \$20,000

Provide, Inc.
Cambridge, MA, \$26,000

South Africa Partners
Boston, MA, \$3,000

The Yard, Inc.
Chilmark, MA, \$1,000

Trustees of Hampshire College
Amherst, MA, \$5,000

THE SOPHIA FUND

The Sophia Fund is a philanthropic fund of the Ms. Foundation for Women, which provides ongoing support for national policy and advocacy work and grantmaking at the grassroots level, ensuring that many voices help shape solutions to end poverty. The Sophia Fund supports strategies, including organizing, advocacy, and constituency-building work and is crucial to the Ms. Foundation's efforts to ensure that women's voices are heard in national policy debates, and to continue to support the national infrastructure for women's philanthropy.

MEG JACOBS' FUND

Meg Jacobs committed her life to protecting and securing women's rights. Her career as a social worker and executive director of the Jacobs Family Foundation and Jacobs Center for Neighborhood Innovation was a living testament to her generosity. When Jacobs passed away, she left a lasting legacy to the Ms. Foundation in the form of a bequest. Her gift established Meg Jacobs' Endowed Fund for Reproductive Health, Meg Jacobs' Expendable Fund for Economic Justice and Meg Jacobs' Expendable Fund for Reproductive Health, all three ensuring her legacy continues.

25th Annual Gloria Awards: A Salute to Women of Vision and Celebrating the 40th Anniversary of the Ms. Foundation

On the evening of May 13, 2013 the Ms. Foundation for Women hosted our annual Gloria Awards: A Salute to Women of Vision gala which also celebrated the Ms. Foundation for Women's 40th Anniversary, at Cipriani 42nd Street in New York City. The pre-gala cocktail reception was co-hosted by renowned actor Olympia Dukakis and Ms. Foundation founding mother Marlo Thomas.



Anika Rahman, former Ms. Foundation President with Gloria Steinem



Saru Jayaraman



Diane von Furstenberg



Bonnie Schaefer, Jamie Schaefer, Olympia Dukakis, Gloria Steinem



Congresswoman Eleanor Holmes Norton

Ms. Foundation for Women Fearless Leader Award: Honoring Susan Fredman



Michael Kayon and Oscar Tatosian



Guests Congratulate Susan Fredman

Ms. Foundation for Women Seattle House Party: Combating the War on Women



Carol Pencke, Ashley Blanchard, Pam Eakes, Julie Edsforth

The Ms. Foundation for Women played an important role in helping change the narrative around key issues for women. By expanding the foundation's media platforms through the re-launch of the website and by building social media communities, we were able to reach new audiences and build support for key campaigns.



When the Steubenville rape case hit the media, victim blaming was the dominant narrative. Using innovative graphics, the Ms. Foundation leveraged social media to help change the conversation. One powerful infographic reached more than 10 million people on Facebook.

The Ms. Foundation also held media giant the Wall Street Journal accountable when it published a column that referred to efforts to reduce sexual assault in the military as “becoming an effort to criminalize male sexuality.” Launching a comprehensive campaign across social and traditional media platforms, we reached 40,000 people on Facebook, published a letter to the editor and generated more than 4,000 protest emails to the editor of the Journal.



The Ms. Foundation for Women's voice for women's rights and equality could be heard from coast to coast, with coverage in national media outlets including the Washington Post, Forbes, CNN Opinion, ABC's Good Morning America and Crain's.

DONOR LISTINGS

Special Thanks to the following individuals, corporations and foundations for their significant leadership support

\$500,000+

NoVo Foundation

\$100,000-\$499,999

Anne Delaney

Anonymous (2)

Quinn Delaney & Wayne Jordan

The Dobkin Family Foundation

The Embrey Family Foundation

Ford Foundation

Groundswell Catalyst Fund

W.K. Kellogg Foundation

Lucia Woods Lindley

Open Society Foundations

Janet W. Prindle

Catherine Raphael

Lynne Rosenthal (with) Leo S. Guthman Fund

\$50,000-\$99,000

The Diller - von Furstenberg Family Foundation

Elizabeth Gibson Sawi

Amy C. Liss

The Loreen Arbus Foundation

E. Bonnie Schaefer

Lindsay D. Shea

\$10,000-49,999

Nancy & Douglas Abbey

Alpern Family Foundation

Anonymous (2)

Asian Americans/Pacific Islanders in Philanthropy

Laura Baudo Sillerman

Ashley Blanchard

Bloomberg LP

Elizabeth Bremner & Karen Crow

Jane S. Comer

Amanda B. Cross

Donna Deitch

Jeannie Diefenderfer

Abigail Disney

Terry S. Fagen

General Service Foundation

Katherine Grover & Michael J. Campbell

Home Box Office

Leigh Hallingby

Connie & Jonathan Heller

The La Fetra Foundation

Seth A. & Beth S. Klarman

Suzanne Lerner

Joseph LeRoy & Ann C. Warner Fund

Eleanor Y. Lord

Joshua Mailman Foundation

Constance Marbach

Neuberger Berman LLC

New York Life Insurance Company

Northern Trust, NA

Betty & Gerard Regard, in honor of Lauren Embrey

Sonya Staff Foundation

Sy Syms Foundation

Thanksgiving Fund

Ungar Foundation

Jenny Warburg

The White House Project

Honorable Constance Hess Williams

Melinda B. Wolfe

\$1,000-\$9,999

Douglas D. Abbey

Patricia S. Adler

All One Family Fund, Titia & Bill Ellis, Founders

Anonymous (3)

Stuart S. Applebaum Giving Foundation,
in honor of Kathy Trager

Katherine B. Arhaud

Heather Arnet & David Shumway

Jill A. Arnow

Landon Ash

Catherine Banson

Stephanie Beling

Carl Belk

Donna Bellew

Joyce Bernstein

Lisa Black

Freya & Richard Block

Dr. Robert L. & Lucinda W. Bunnen

Patricia T. Carbine

Charles B. Wang International Foundation

Susan Nora Clark

Elizabeth Colton

Combined Federal Campaign

Letty Cottin Pogrebin & Bert Pogrebin

Urvi Dalal

Robert O. Delaney, in honor of Anne Delaney

Dickler Family Foundation

Ingrid S. Dyott

Julie Edsforth

Alison Edwards

Eve Ellis & Annette Niemtzow

Ginger Elvin

Jodie Evans

Joyce Follet

Donna Frankel & Andrew J. Frankel

Susan Fredman Design Group

Eleanor Friedman

Fujitsu Network Communications Inc.

Jill & James Gibson

Neil Gobioff

William Goldman

Gail Gorlitz

DONOR LISTINGS

\$1,000-\$9,999 (Continued)

Sara K. Gould & Rick Surpin
Debra & Mark Green
Barbara Grodd
David Hahn
Jean V. Hardisty
Meryl Hartzband
Mary & Dennis Helf
Caroline P. Hirsch
Polly H. Howells & Eric Werthman
Marian Howley
Hsin-Mei Agnes Hsu
Nancy Hult Ganis
The Isabel Allende Foundation
Betsee Isenberg
Chandra E. Jessee
Gloria L. Joseph
Judy M. Judd
Kauff McGuire & Margolis LLP
Ann F. Kaplan
Anne Kiehl Friedman
Sun Kim
Patricia J. Kozu
Marlene R. Krauss
Deborah Landis
Alicia Lara
Geraldine B. Laybourne
Lebowitz Family Foundation
Barbara F. Lee
Barbara J. Lee
Min Jin Lee
Leo Model Foundation
Yin Ling Leung
Elsa Limbach
LM Strategies Consulting
Geri LeVine Loe
Margaret & William Lynch
Randy Macpherson
Marguerite Casey Foundation
Patricia Y. Martin
Rose-Ann McGregor
Mertz Gilmore Foundation
Mitchell, Silberberg & Knupp, LLP
Susan Morrison
Katharine B. Mountcastle
Marysa Navarro
Sheila Nevins
Margaret H. Newell
Brigette Noh
Elaine M. Nonneman
Nancy Nordhoff
Lori Ordovery
Jane Ordway
Julie Overbeck
Julie Parker Benello
Mary R. Peluso

Carol T. Pencke
Susan Penick
Marian S. Pillsbury
Susan Plum
David Prince
T. Jackie Quan
Dolores Raynolds
Lynda Resnick
Thomas Rider
Teresa L. Roberts
Judith A. Ruskowski & Ken Regal
Peter Sagerson
Mary Beth Salerno
Catherine Samuels
Sheri Sandler
Dorothy Schneider
Tom Sedoric
Jane Semel
Lynn Sherr
Jean Shinoda Bolen, M.D.
Mary Lou Shott
Patricia J. Simpson
Janet Singer
Diana Stark
Kathleen Stephansen & Andrew D. Racine
Jane Stern
Barkley J. Stuart
Sara Stuart
Mamundi G. Subhas
Sheila Stanford
Tani H. Takagi
Dorothy Q. Thomas & Michael Hertz
Marlo Thomas & Phil Donahue
Melanie Tomanov
Lily Tomlin & Jane Wagner
Susie Tompkins Buell
Kevin Tromp
Vivian Tseng
TWANDA Foundation
Denise Venturi & Robert Venturi
Sonali Virendra
Elizabeth Von Ziegesar
Carolyn F. Webber
Verna L. Williams
Margo Winkler
Oliver Wolcott
Shelley Young
Joyce L. Yu

STATEMENTS OF FINANCIALS

CONSOLIDATED STATEMENT OF FINANCIAL POSITION

for the year as of June 30, 2013

ASSETS

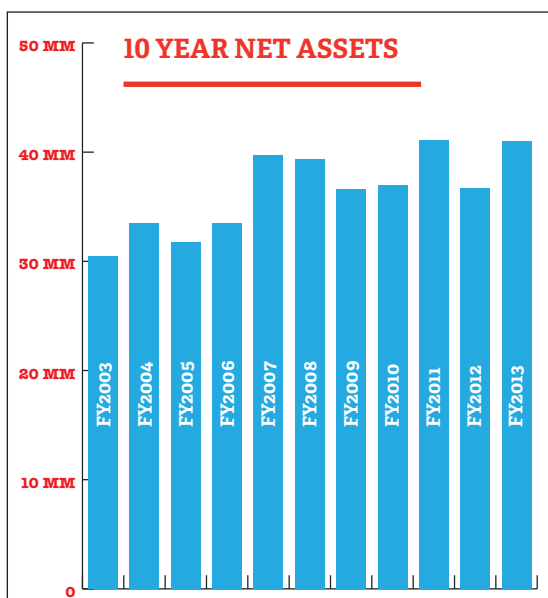
Cash and cash equivalents	\$ 1,889,055
Pledges, grants and contributions receivable	4,068,147
Accrued interest receivable	6,244
Prepaid expense and other receivables	268,730
Investments	34,622,586
Furniture, equipment and leasehold improvements, net of accumulated depreciation and amortization	623,763
Art work	77,000
Rent security deposits, restricted cash equivalent	140,548
Total Assets	\$ 41,696,073

LIABILITIES AND NET ASSETS

Accounts payable and accrued expenses	\$ 587,832
Grants payable	484,000
Deferred rent	182,896
Total Liabilities	1,254,728

NET ASSETS

General operations	\$1,955,150
Board designated	1,416,292
	3,371,442
Temporarily restricted	12,362,285
Permanently restricted	24,707,618
Total Net Assets	\$40,441,345
Total Liabilities and Net Assets	\$ 41,696,073



CONSOLIDATED STATEMENT OF ACTIVITIES AND CHANGES IN NET ASSETS

for the year ended June 30, 2013 and June 30, 2012

PUBLIC SUPPORT AND REVENUES

	2013	2012
Contributions and grants	\$ 7,210,855	\$ 4,079,224
Special events, net of direct donor benefit of \$328,633	847,613	519,221
Investment income, net	603,537	778,842
Net realized (loss) gain on investment transactions	764,238	181,953
Other income	4,095	38
Total Public Support and Revenue	\$9,430,338	5,559,278

OPERATING EXPENSES

Program Expenses

Grants and Capacity Building	\$3,815,740	\$5,237,842
Advocacy and Policy	566,608	51,871
Public Education	1,052,941	850,656
Total Program Expenses	5,435,289	6,140,369

Supporting Services

General and administration	\$1,481,119	1,453,417
Fundraising	1,492,816	1,469,613
Total Supporting Expenses	2,973,935	2,923,030

Total Operating Expenses	\$8,409,224	9,063,399
---------------------------------	--------------------	------------------

Change in net assets before change in unrealized gain on investments	\$1,021,114	(3,504,121)
Change in unrealized gain on investments	2,713,354	(907,457)
Change in net assets	3,734,468	(4,411,578)

Net Assets

Beginning of the year	\$36,706,877	41,118,455
Net Assets at End of the Year	\$40,441,345	36,706,877



“Planned giving is one of the few ways we can support the people and values we love, no matter what happens to us. It carries what we care about into the future.”
—Gloria Steinem

Create your own legacy for women and become a member of Gloria’s Future Fund

Gloria’s Future Fund, named in honor of Ms. Foundation for Women founding mother Gloria Steinem, is comprised of members who have created a lasting legacy for women through planned gifts to the foundation through bequests, life income gifts, insurance policies and other estate planning vehicles.

When you make a gift to the Ms. Foundation through your estate or financial plans, you become part of a movement of philanthropists who, just like Gloria, are committed to securing and protecting rights for women across the United States.

If you would like to become a Gloria’s Future Fund member, please contact us at 212.709.4444 or msfund@ms.foundation.org.

Gloria’s Future Fund Members:

Lucia W. Lindley
 Katherine Grover
 William M. Hawkins
 Sherry Jubilo
 Mary C. Helf
 Sharon Howe
 Eleanor Y. Lord
 Catherine Raphael
 Bonnie Schaefer
 Tracy D. Gary
 Elizabeth L. Bremner
 Cora R. Wortman
 Michael J. Campbell
 Anika Rahman
 Meg Jacobs
 Valerie I. Fennell
 Rhona Frank
 Leigh Hallingby
 Margaret L. Lynch
 Ene Riisna
 Francine V. Rivkin
 Ellen A. Schwartz
 Gloria Steinem
 Nancy L. Toder

BOARD OF DIRECTORS:

Chair

Cathy Raphael

Vice Chair

Ashley Blanchard

Co-Treasurers

Eve Ellis

Kathleen Stephansen

Secretary

Verna Williams

Board Members

Heather Arnet

Liz Bremner

Susan Dickler

Jeannie Diefenderfer

Phoebe Eng

Lauren Embrey

Alicia Lara

Rene Redwood

Dorothy Q. Thomas

Over our 40-year history, we have supported thousands of organizations across the United States that build women's collective power, tackle the root causes of injustice and ignite progressive change. We help build up the capacity of community-based organizations to ensure they are stable and effective, helping women everywhere.

Today, we are focused on three bold initiatives that advance safety and equality for women:

- Fighting for **equitable pay** and **securing work** and **family supports** including child care for working mothers
- Ensuring that all women have **access to reproductive health care**
- Preventing child sexual abuse, an issue that affects **1 in 4 women**

Investing in the Ms. Foundation for Women is an investment in a better future for women.

TO DONATE:

visit www.forwomen.org/donate.

BY MAIL:

Ms. Foundation for Women,
Development Department,
12 MetroTech Center, 26th Floor, Brooklyn, NY 11201

You can also contact us at
msfund@ms.foundation.org or 212.709.4444.



Ms. FOUNDATION
FOR WOMEN

FORWOMEN.ORG