

DARE TO BE HEARD

When I dare to be

powerful —

**to use my strength
in the service of my
vision, then it becomes
less and less important
whether I'm afraid.**

Audre Lorde

Letter from the Board Chair and President & CEO



Above left: Katie Grover, Board Chair

Above right: Sara K. Gould, President & CEO

Dear Friends,

Certain events define an era. Sometimes without warning, we find order and routine replaced by chaos and uncertainty. And in these trying moments our assumptions and our character are put to the test. As the Ms. Foundation for Women reviews its relationships and accomplishments over 2005 and 2006, we are gratified to know that, side by side with our donors and grantees, we dared to meet the challenges of our time.

It was late summer 2005 when Hurricane Katrina struck the Gulf region and the levees broke, ravaging states and communities and all but destroying New Orleans. The U.S. government responded slowly and inadequately, providing a botched rescue and relief effort in the weeks and months that followed. When we needed **a true democracy of equity and inclusion**, we instead saw indifference. When we needed to see women empowered, we instead saw them ignored. The Ms. Foundation responded with support immediately.

Enter Donna Banks, Una Anderson, Xochitl Bervera and countless other powerful women of color, leaders with spirit and the wherewithal to rebuild their communities from the ground up. One woman walked through water up to her chin, pushing her 10-year-old in a plastic garbage can in front of her, eventually finding safety in spite of National Guard efforts to separate her from her son. Another talked her

way past blockades to rescue some 60 people. Another reunited 240 youth in detention—up to their necks in water and sewage—with their families.

Each of these women thoroughly understood the needs of her community before the storm landed, and each put her relationships and beliefs into high gear when the time of need arrived. In the same way, the Ms. Foundation for Women, its donors and grantees understood long before Katrina the inequities alive in this country and the dire need for meaningful systemic change. And one by one we all are bringing our communities—and our nation—back to life with clear vision and decisive action.

At the Ms. Foundation this clarity of purpose energizes us because **when women become empowered to make social change our democracy breathes with new life**. It is a big and daring endeavor, to be sure, but one that we see our grantees achieving with grace every day.

The Rebecca Project brings the experiences of low-income families with substance abuse issues to congressional policy making tables in Washington, D.C. The National Women and AIDS Collective calls on federal legislators to make women with AIDS—who die at twice the rate of men—a priority in the HIV/AIDS pandemic. And the Colonias Development Council in Las Cruces, NM secured the passage of clean water and air legislation through a grassroots organizing

campaign that built power and leadership among women of the colonias. These are just three examples of the difference that Ms. Foundation-supported organizations are making in communities across the nation.

Nelson Mandela put it best when he said, **“Vision without action achieves nothing. Action without vision just passes the time. Vision with action can change the world.”**

Changing the world is no easy task. It requires a community that is ready to learn and eager to apply what it learns. We challenge our donors and grantees daily to be inquisitive and responsive to current political and social trends. We ask the same—and more—of ourselves as a foundation.

We don't assume that the status quo, even down to the categories we've historically used to organize our giving, is adequate to express our vision for change. If we discover that something isn't working, we will endeavor to set it right. So don't be surprised to see the Ms. Foundation's next annual report describe our work in terms that are even more responsive to the needs of communities everywhere.

We make this prediction confidently because we have gathered wise women in our court. The Ms. Foundation, its donors and grantees form an equal-partnership learning community. Together, we turn problems into opportunities. Together, change

becomes more lasting and deeply rooted. Together, we are more effective leaders, better equipped to carry our vision and actions forward. (Oh, the places we'll go!)

We invite you to journey with us in our quest for equity and inclusion. We urge you to bring along your friends, neighbors, and communities, your government officials, your relatives, parents, spouses and children. **Join us as we build women's power to drive social change at the crossroads of race, class, and gender.**

As we continue to provide dollars, capacity-building support, networking opportunities and leadership training to our grantees, we need all of us—from the most connected to the least—to **dare to be heard** as we answer the calls of our time. When we falter, we have only to remember the spirit and courage of our friends, women like Donna Banks, Una Anderson and Xochitl Bervera, who waded in with their wits and emerged with hope and possibility.

We look forward to traveling this road together.

Katie Grover
Board Chair

Sara K. Gould
President & CEO

Dare to be at the policy table...



ILLUSTRATION OF CARRIE BROADUS
LEADING FOR LIFE: WOMEN ALIVE COALITION

In times of crisis...

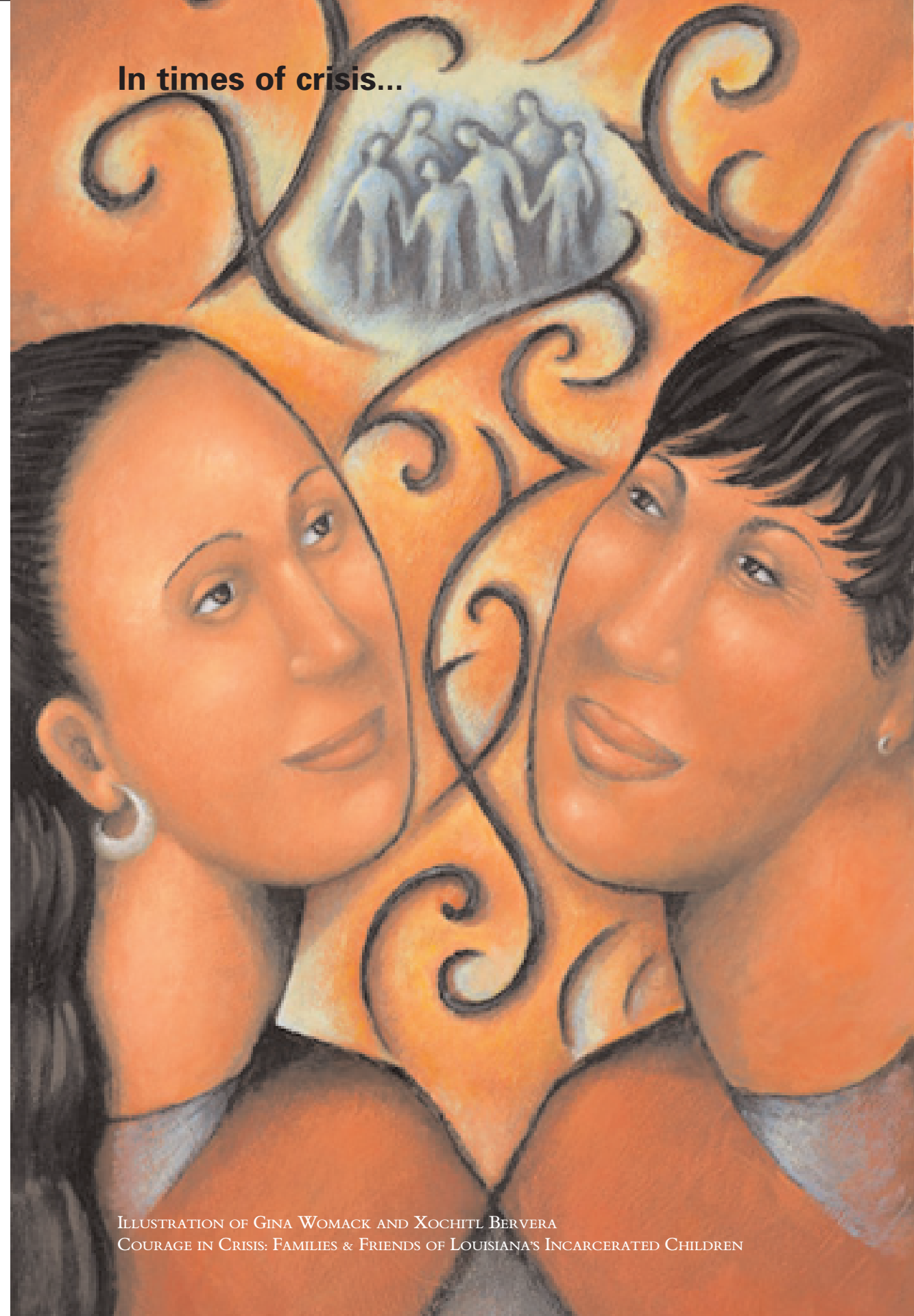


ILLUSTRATION OF GINA WOMACK AND XOCHITL BERVERA
COURAGE IN CRISIS: FAMILIES & FRIENDS OF LOUISIANA'S INCARCERATED CHILDREN

The women who work alongside Carrie Broadus answer only to themselves. “Women have the right to make their own decisions,” she says. “If you ask me for permission to do your job, how can you empower others?”

Carrie is executive director of the Women Alive Coalition, a Los Angeles organization serving women with HIV/AIDS. Carrie is HIV negative, but people assume she is positive based on the authority with which she speaks.

Carrie’s work on this issue spans decades and has shown her that HIV/AIDS is not about somebody else. It’s about all of us. She knows that women of color account for 80 percent of the women diagnosed with AIDS, and that HIV infection is the leading cause of death among African-American women age 25-34.

LEADING FOR LIFE: WOMEN ALIVE COALITION
Los Angeles, CA

You won’t find Carrie Broadus issuing orders or directives to the women she works with. Instead, she expects them to take charge and assume personal responsibility for every aspect of their lives. The result is a powerful organization unafraid to speak out.

Carrie is executive director of the Women Alive Coalition, a Los Angeles organization supported by the Ms. Foundation that serves women with HIV/AIDS.

“Women come in shoulders bent, head down, lost,” says Carrie. But with the help of Women Alive, they soon determine to help themselves and others. This includes telling their stories in person, in the newspaper, in letters to their legislators and on the radio.

One such woman is Precious Jackson. When Precious was 26, she received a letter from her ex-boyfriend, writing from the penitentiary to tell her he had tested HIV-positive and to encourage her to get tested.

Like other women, Precious didn’t think it could happen to her. She didn’t fit into any of the high-risk groups. But within two years of learning she was HIV-positive, Precious had resolved to prevent her own experience from happening to others.

This journey from death to life, silence to voice, is not easy. But in a place where every woman becomes a leader in her own right, the world eventually begins to look different.

Case in point: After working with scores of women who had been silently suffering the effects of HIV/AIDS with little or no public support, the Women Alive Coalition discovered that the state was routinely denying medical services to HIV-positive women who did not meet criteria for traditional high-risk groups (sex workers, intravenous drug users or those with more than 12 sex partners in a year).

The Women Alive Coalition spoke up, calling attention to what they deemed discriminatory and life-threatening policies. Staff and volunteers distributed information, wrote letters and attended community meetings. And eventually people listened.

The Los Angeles Office of AIDS confirmed that 40 percent of the people diagnosed with HIV/AIDS did not fit into any of the high-risk groups. Eventually, state laws were changed so that women can receive testing no matter what. Their next step, says Carrie, is to make the testing more accessible in communities where it’s needed most.

“The power is in us,” says Carrie. “Once we gain our voice, we are required to help another gain her voice.”

In this way, their potential becomes limitless. “If you want to change a community, teach the women,” says Precious. “When you change the way she thinks, she teaches her aunts and nieces, her uncles and nephews.” *

COURAGE IN CRISIS: FAMILIES & FRIENDS
OF LOUISIANA’S INCARCERATED CHILDREN
New Orleans and Lake Charles, LA

Xochitl Bervera does not mince words when describing the state of her community one year after Hurricane Katrina. “People need to hear that it’s not ‘ok’ down here . . . It’s an ongoing disaster, a national disaster. You can’t have the largest displacement of black people and not have it have an effect.”

Nonetheless, she and Gina Womack, co-directors of Ms. Foundation grantee Families & Friends of Louisiana’s Incarcerated Children (FFLIC), are determined to stay. The organization, with help from the Ms. Foundation, supports juveniles in detention or at risk of detention and their families. Gina and Xochitl’s determination was never so visible as when Hurricane Katrina struck and the levees broke in New Orleans.

When Gina and Xochitl learned they would need to evacuate for the storm, they immediately began worrying about their members. The pair soon discovered that 240 juveniles were in detention in Orleans and Jefferson Parishes, many stranded in water up to their necks, covered in sewage and starving.

Despite warnings of people being turned away from the city at gunpoint, Gina and Xochitl began the search for youth and their families. With the help of 40 volunteers in 15 states, FFLIC eventually matched every single one of the detained juveniles with their families and had them released into family custody.

While this “reunification” project was underway, FFLIC e-mailed friends and acquaintances asking for support. The staff then relocated to Lake Charles—and Hurricane Rita hit. But thanks to that early e-mail, FFLIC soon started receiving donations totaling over \$100,000. They split the funds among families in the program, allotted according to need.

By November 2005 the organization needed to determine its future. They quickly organized around issues facing their two separate locations. Lake Charles focused on policy and a campaign on school discipline; in New Orleans, they zeroed in on rebuilding.

Today, FFLIC’s context for organizing has shifted, given the presence of the National Guard and the State Police. They continue to monitor juvenile detention, but have since begun looking more closely at police violence. “There needs to be a public safety system that serves to keep people safe, not control populations,” Xochitl says.

“I thought that perhaps this was another ‘Birmingham ’63,’” she reflects. “But it was only for a moment. In a painfully clear way, there was no national response.”

Even with these observations, Xochitl looks toward the future. FFLIC plans to refocus government funding policies away from detention centers and other policing mechanisms, and towards the creation of schools, services and programs.

Xochitl plans to stay in New Orleans to see out this mission. “New Orleans captured my heart,” she says. “I spent six years building FFLIC; I feel I need to finish.” *

If there is a lesson to be learned from Families & Friends of Louisiana’s Incarcerated Children (FFLIC), it is this: never underestimate the determination of a pair of powerful young women intent on making a difference.

What began six years ago as an informal support group for the mothers and grandmothers of juveniles in detention or at risk of detention, has grown into a bona fide organization: passing legislation; working to close a 700-bed correctional center (described as “horrific”); and reducing the number of juveniles in detention statewide from 2,000 to just 400.

Gina Womack and Xochitl Bervera, the co-executive directors of FFLIC, have succeeded by making these young people and their families a priority when few others do. And at no point was this accomplishment more evident than during and after Hurricane Katrina.

BUILDING WOMEN'S POWER TO DRIVE SOCIAL CHANGE: THE FOUNDATION'S APPROACH TO GRANTMAKING



Convenings create opportunities to share knowledge, best practices



Cultural celebration:
An essential component
of movement building

Since its inception, the Ms. Foundation for Women has confronted injustice and supported emerging organizing trends by providing funding where it is most needed to support women and their communities. Through grants, capacity-building efforts, convenings and learning opportunities, the Foundation works to ensure that diverse women and girls have what they need to live safe, fulfilling and empowered lives.

The following program areas provide the framework for Ms. Foundation giving. In addition to having the flexibility to support work that crosses these broad issue areas, the Foundation also expects these categories to change as the needs of women evolve and political contexts shift. This will ensure that the Foundation's approach continues to match the potential of its grantees in relevancy, collaboration and learning.

Economic Security

An economically secure woman transforms her family and her society with vision, risk-taking and leadership. By providing funding locally, regionally and nationally, the Ms. Foundation supports better wages and working conditions for women. The Foundation also provides resources and training to help women lift themselves and their families out of poverty.

In recent years, the number of women-owned businesses has grown at twice the rate of all U.S. firms. The Ms. Foundation supports this trend by funding community-based organizations that help low-income women start and expand their own businesses.

Health and Safety

Every woman deserves the basic human rights of freedom from violence and freedom of choice. The Ms. Foundation has long held that the involvement of women and girls from all walks of life is essential to creating safe communities and ensuring access to the full range of health care. Our grantees reflect this commitment and represent some of the most innovative work to create reproductive justice for women and to preserve their safety, from encouraging men to play

"To come here and hear about so much work that's going on all over the country where organizations and individuals are pursuing a social justice agenda—it's very encouraging."

— Carol Burnett, Executive Director, Mississippi Low-Income Childcare Initiative, on the Institute

a larger role in ending violence to changing the policies that contribute to women dying of HIV/AIDS at twice the rate of men.

Girls' Leadership and Youth Organizing

A passionate and purposeful girl or young woman breathes new life into her family, school, and community. For over a decade, the Ms. Foundation has brought together individuals, foundations, corporations and youth to focus and energize the next generation of leaders. Initiatives like the Collaborative Fund for Youth-Led Social Change amplify young women's voices, promote their leadership and provide them with safe spaces for community organizing. The Foundation also pays attention to the unique needs of boys, girls and transgender youth, identifying ways these groups can work together to increase their potential to create lasting social change.

Democracy and Power

The highest goal of the Ms. Foundation for Women is a true democracy of equity and inclusion. The Ms. Foundation provides flexible funding across a range of issues specifically focused on empowerment and public policy opportunities. The knowledge,

relationships and voice gained by grantees and their constituents strengthen their ability to make lasting change at the individual, community and national levels. Specific efforts include the Katrina Women's Response Fund, providing strategic support to meet the immediate post-hurricane needs of women of color and low-income women in the Gulf Coast region and ensuring that their leadership and priorities are integral to ongoing recovery and rebuilding efforts.

"We have to build power in our communities. And to do that, we have to work in coalition—because there are just not enough resources for us to do it by ourselves."

— Nsombi Lambricht, Executive Director, American Civil Liberties Union of Mississippi

At the Ms. Foundation for Women, we know that building relationships is the key to building movements. That is why we invest more time and money than most foundations do in capacity-building and networking among our grantees. We know that connecting women, girls and activists to one another, and providing them with opportunities for collaboration and strategy building, creates the momentum, support and shared vision that empowers women to drive social change. The following programs are examples of the power of moving forward together.

The New Women's Movement: A Defining Moment

From late 2003 through early 2006, the Ms. Foundation co-lead a series of meetings and retreats designed to unleash the energy, experience and insights of more than fifty women leaders on critical questions facing the U.S. women's movement.

Known as the **New Women's Movement (NWM)**, the project was initiated by Barbara Phillips, formerly of the Ford Foundation, who was intrigued by a research study, "Progress & Perils," released by the Center for the Advancement of Women. The Center's president, Faye Wattleton, joined Barbara, Katherine Acey of the Astraea Lesbian Foundation for Justice, Kalpana Krishnamurthy and Monique Mehta, executive directors of the Third Wave Foundation, and Sara Gould, president & CEO of the Ms. Foundation in a core planning group. Mary Kay Penn assisted this group

in an essential planning and facilitation role. Grants from the Ford Foundation provided the financial resources that made the project possible.

Dozens of other leaders also participated, including the executives of national and regional women's organizations, scholars, researchers and philanthropists. The NWM group included a strong presence of women of color, as well as cross-generational representation from activists spanning the past 35+ years of the women's movement.

NWM participants convened five times over 2 1/2 years to create a shared vision complete with movement building strategies that promised to re-invigorate the U.S. women's movement and connect it in stronger ways to the growing global women's movement. New relationships were formed and old ones deepened through frank discussions about long-standing separations in the movement over race, class, age and sexual orientation.

Participants began to envision a revitalized women's movement built on a framework of social justice feminism—a movement powerful enough to address the issues that affect all of our lives and communities. They strategized new approaches to organizing and advocacy that better elevate women of color and low-income women's leadership, perspectives and power. This important consensus represents a new beginning and a forward-looking realignment within the women's



Institute workshops provide hands-on training and tools for activism



Youth at work: Helping tomorrow's leaders dream big

movement. Its implications will begin to be felt through the actions of participating leaders and organizations, in their own work and in new collaborations nationwide.

Institute for Women's EmPOWERment: iMuévete! Moving from Vision to Action

In the summer of 2006, over 200 participants gathered at the Aberdeen Woods Conference Center in Peachtree City, Georgia for the Ms. Foundation's 13th Institute for Women's EmPOWERment under the theme "iMuévete! Moving from Vision to Action."

Where past Institutes had focused primarily on economic security, the 2006 gathering embraced all of the issues that the Ms. Foundation supports. The intent: to realize a broader vision for social change and uncover new ways for activists to collaborate.

Over four days of energetic knowledge-sharing, cultural celebration (art, music, dance), networking and skill-building, the Institute linked activists of diverse backgrounds in order to build on their effectiveness and collective power. Workshops and strategy sessions focused on campaign planning, financial literacy, immigration justice and more. Thanks to support from allies such as the Marguerite Casey Foundation, the Ford Foundation, the General Services Foundation, the Leo Guthman Fund, the Hill Snowden Foundation and Lynne P. Rosenthal, the Institute paved the way for ongoing local, regional and national networking among attendees, and helped lay a foundation for change.

Take Our Daughters And Sons To Work®: A Bright Future for Families

Each year, the Ms. Foundation's Take Our Daughters And Sons To Work® day has engaged more than 35 million women, men, girls and boys and nearly three million businesses nationwide. This hallmark day occurs each April, and has become a household name for helping children envision their futures and plan for success.

By design, the workplace events go beyond the traditional "career day" to give young people age 8-12 a new perspective on the challenges adults face in balancing their professional goals with sufficient time for their families. Children are provided an opportunity to dream big, while also talking and thinking in more practical terms about the work/life balance they might want in adulthood. For many, the event clarifies the importance of education and demonstrates how choices made today truly can change lives tomorrow.

The Ms. Foundation thanks the companies and volunteers who make this event a special priority each year. Their time and engagement shows the value we should all place on America's children and the future of our families.

Dare to be at the Capitol...



ILLUSTRATION OF SILVIA HENRIQUEZ
POWER IN YOUTH: NATIONAL LATINA INSTITUTE FOR REPRODUCTIVE HEALTH

At the ballot box...

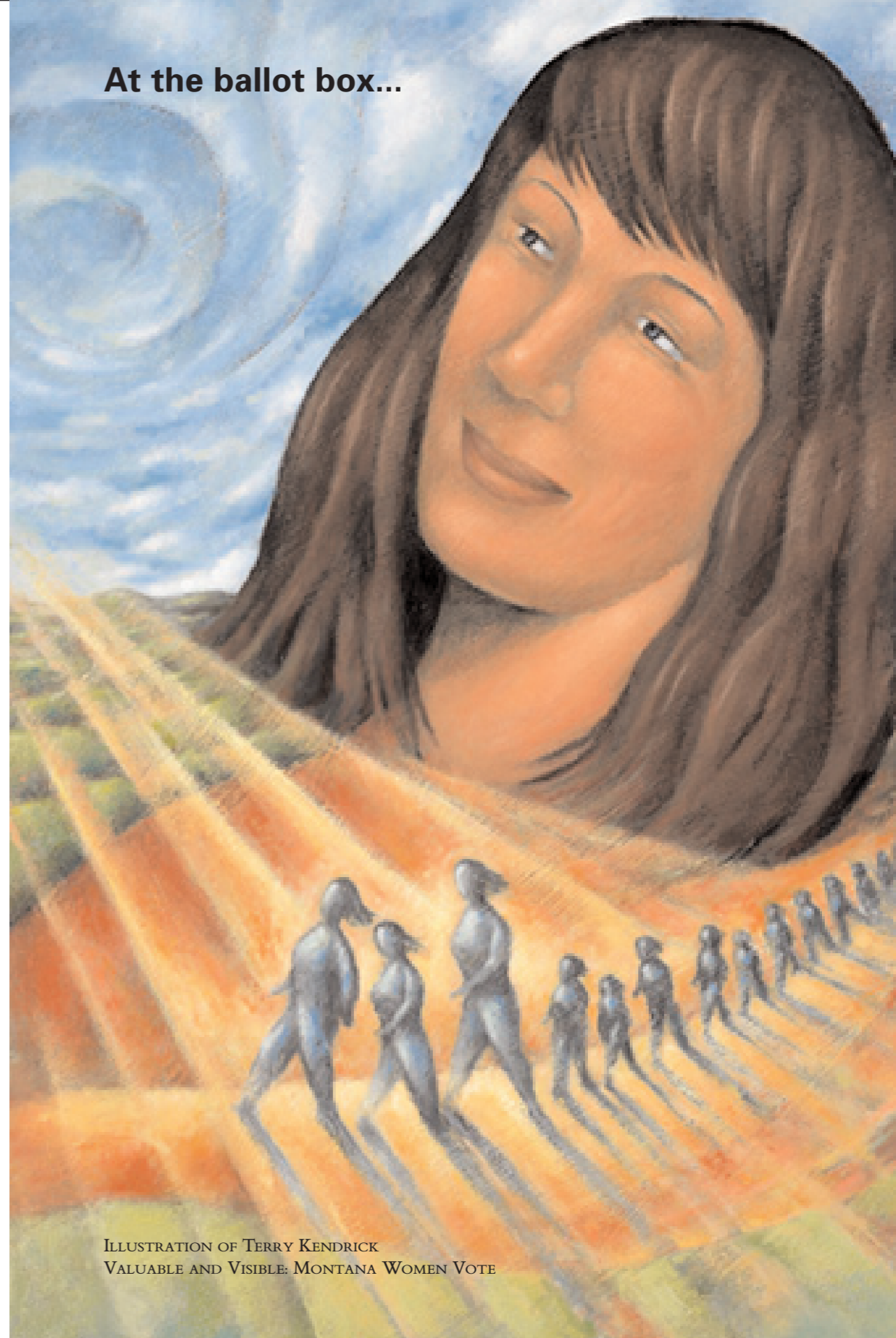


ILLUSTRATION OF TERRY KENDRICK
VALUABLE AND VISIBLE: MONTANA WOMEN VOTE

Silvia Henriquez was just 28 years old when the National Latina Institute for Reproductive Health (NLIRH) boldly hired her as its executive director. NLIRH helps Latinas, their families and communities access reproductive health care through education, policy advocacy, and community mobilizing. Silvia sought out the organization after spending time in El Salvador working with a doctor to educate women about contraceptives.

In the three years since, Silvia has skillfully led the organization through unprecedented growth and opportunity. Her age and style mirror the organization’s constituents: up-and-coming women leaders between the ages of 20 and 40. And really, some of its strongest leaders are not yet even 18. With over 35 million Latinos living in the United States, the need for reproductive health advocates is great. “Every city and state has its own needs,” Silvia says, from disparities in breast and cervical cancer, to HIV/AIDS prevention.

POWER IN YOUTH: NATIONAL LATINA
INSTITUTE FOR REPRODUCTIVE HEALTH
New York, NY

What Silvia Henriquez enjoys most about her job is meeting what she calls “our cadre of leaders,” young women across the United States stepping up to connect with one another around shared concerns, and agitating for social justice in their communities.

Silvia is executive director of the National Latina Institute for Reproductive Health (NLIRH), a Ms. Foundation grantee that supports community organizing, local and national policy efforts, and education to ensure that Latinas, their families and communities receive reproductive health care.

One such “cadre of leaders” is Young Women United (YWU) in Albuquerque and its active group of teenage volunteers. Supported by the Ms. Foundation and receiving leadership and advocacy trainings from NLIRH, the group began by wondering why so many girls were dropping out of high school and ultimately found that teen pregnancy was a primary cause. New Mexico has the nation’s third highest rate for teen pregnancy.

Linking the number of teen pregnancies with New Mexico’s “abstinence-only” approach to sexuality education, YWU launched an advocacy and outreach campaign that recently led the New Mexico Department of Health to a compromise. Rather than just providing abstinence-only sexuality education in schools, officials agreed to begin providing comprehensive sexuality education to public school students grade seven and above, with Federal abstinence-only monies used solely for grades six and below.

Since YWU’s achievement, abstinence-only advocates have become more vocal and many school administrations have been slow to implement the new curriculum. But the non-profit’s teen advocates remain undeterred, and continue to make progress toward their goals, including educating their legislators.

It is this combination of vision, action and success that excites Silvia Henriquez and her National Latina Institute allies. She recognizes that woman-by-woman empowerment in local communities builds capacity and momentum for much broader change.

Of course, visibility at the Federal level doesn’t hurt either. Which is why Silvia was so pleased when NLIRH convened a national advocacy weekend in Washington, D.C. in 2006, inviting their lead activists to participate in trainings and meet with Members of Congress and their staff.

While the 40 women who took part may have gone in feeling skeptical about speaking to conservative lawmakers, the dialogues turned out to be promising, spanning sexuality education, abortion rights and immigration issues.

Like the young women in Albuquerque, these women’s stories and presence made an impact on those who met them. The women, in turn, felt heard and empowered to do more. One participant summed up her lobbyist-for-a-day experience by explaining, “I didn’t know that a person like me could speak and feel respected.”

“We clearly need more women to do this work,” says Silvia. “It’s a powerful personal experience that will change the political landscape for all of us.” *

VALUABLE AND VISIBLE:
MONTANA WOMEN VOTE
Missoula, MT

It’s Terry Kendrick’s business to know why some people engage with their government and others don’t. “If you want people to participate,” she says, “they have to know that their voice has *value* in the political process.”

Terry directs Montana Women Vote (MWV), a coalition supported by the Ms. Foundation that informs low-income women about timely community issues and works to increase political involvement and voter turnout. The group’s first-year efforts in 2000 increased voter turnout by nine to 15 percent in each of their targeted precincts.

Buoyed by these initial achievements, MWV and its allies intensified their efforts in subsequent years, working not only on voter registration and election-day turnout, but also on developing voter guides and conducting focus group research to better understand why so many low-income women felt disempowered.

That early research was critical for MWV. They learned that many women knew they should vote, but did not feel comfortable starting the process.

For some, the reasons were practical—the challenge of finding childcare or transportation to the polls, or not having enough time between jobs. But others feared casting an under-informed vote on ballot measures and officials whose function they did not fully understand.

“Asking women why they don’t vote is similar to asking them why they don’t exercise,” Terry explains. “We learned that voting is seen as a social habit, and sometimes people need to be invited to take part.”

Building on its early success, in 2004 MWV delivered a 77 percent voter turnout rate of the people it registered—higher than the statewide rate of 71 percent. In 2005 the group developed a comprehensive legislative agenda aimed at increasing voter access to ballots and to the polls. Their legislative agenda focused on community issues beyond voter turnout alone, and ultimately helped improve economic security for low-income Montanans, promote reproductive freedom and enhance community efforts to stop domestic violence.

In 2006 MWV established a Leadership Development Training Program that connects aspiring leaders with female officeholders willing to share their experiences in public service. They also registered 2,000 low-income women voters and produced and distributed a voter guide that reached more than 20,000 Montana women statewide.

“When we first started this work, I was surprised that as many women even bothered to vote as did,” Terry recalled. “That’s because women historically didn’t see folks in office who look like us or shared our experience in any real way. It was as if we were invisible to most elected officials.”

But after six years, dozens of victories and the establishment of a powerful MWV voting bloc, those feelings are finally starting to change. “It’s taken a lot of hard work,” Terry said, “but we’re not invisible any more.” *

“Democracy only works when everyone has a voice,” says Terry Kendrick, a native of Montana and long-time advocate for social justice.

Terry is director of Montana Women Vote (MWV), a Missoula-based coalition of ten organizations formed in 2000 to educate and mobilize low-income women about important community issues and increase voter turnout in the neighborhoods where they live.

In its first year, MWV targeted low-income precincts in five urban communities, and on seven Indian reservations. As political strategies go, their objective was clear—to increase voter turnout in select areas by at least five percent. The project proved an overwhelming success, boosting voter turnout by nine to 15 percent in each of their targeted precincts.

Ms. Foundation Annual Events



Presenter Pam Grier at the 2006 Gloria Awards



Performer Judy Gold at the 17th Annual Comedy Hour at Carolines

As they have for nearly two decades, supporters and friends gathered together in 2005 and 2006 to celebrate the Annual Gloria Awards and the Annual Comedy Hour at Carolines.

The Gloria Awards

The Gloria Awards: A National Salute to Women of Vision is the Ms. Foundation's largest annual event. For 18 years, the awards have honored women and girls whose achievements in social justice, gender equity, and women's leadership move our society closer to an inclusive and equitable democracy.

Annual honorees stand as true models of change, demonstrating the Ms. Foundation belief that empowering women to govern their lives and influence the world around them really *can* change the way the world works.

Comedy Hour at Carolines

The Annual Comedy Hour at Carolines celebrated its 17th year in 2006, featuring top female stand-up comics presented by women's movement pioneer Gloria Steinem, Ms. Foundation President Sara Gould and the President of Carolines on Broadway, Caroline Hirsch. Thanks to the continued generosity of Caroline Hirsch, all proceeds from this event go to Ms. Foundation programs.

2005 Gloria Award Recipients

- > Karen Artichoker, Cangleska, Inc.
Woman of Vision Award
- > Anne Delaney, The Starry Night Fund, and Quinn Delaney, Akonadi Foundation
Philanthropic Vision Award
- > Cecilia Lira, Western States Center's Idaho Latino Vote
Marie C. Wilson Young Woman's Leadership Award
- > Patricia Nalls, Women's Collective
Woman of Vision Award
- > Yvonne Thompson-Friend, Childspace Cooperative Development, Inc.
Woman of Vision Award

2006 Gloria Award Recipients

- > Margaret Chapman, West Virginia FREE
Woman of Vision Award
- > Betty Cohen, Lifetime Entertainment Services
Corporate Philanthropy Award
- > Lamika Ferdinand, The Center for Young Women's Development
Marie C. Wilson Young Woman's Leadership Award
- > Susan Grode, Katten Muchin Rosenman LLP
Woman of Vision Award
- > Jaribu Hill, Mississippi Workers' Center for Human Rights
Woman of Vision Award

Dare to Take Action: Information for Grant Seekers

The Ms. Foundation for Women knows that those experiencing a problem stand as the true experts in finding its solution. We give special consideration to organizations that seek to eliminate discrimination; address particular challenges faced by low-income women and girls; work across issue areas; encourage intergenerational work; and include in leadership positions those most directly affected by the organization's work. We also seek to help support groups with limited access to other funding sources.

Our grants are primarily awarded through special grant-making initiatives. We solicit applications in either an open Request for Proposals (RFP) or through a targeted solicitation.

The Foundation does not award grants to support direct service projects, individuals, scholarships, university-based research, state agencies, religious institutions, stand-alone cultural or media projects, publications, or conferences.

We do award a very small number of grants to organizations that submit unsolicited funding requests, beginning with a letter of inquiry. These are usually reserved for special projects, or to respond quickly to a policy issue that matches our mission and priorities.

If you think your organization is engaged in work that may interest the Ms. Foundation, please consult our Web site, www.ms.foundation.org, before submitting a letter of inquiry.

FY 2005 Grants

<p>Economic Security Collaborative Fund for Women's Economic Development, Third Round Association for Enterprise Opportunity (AEO) \$2,000 <i>Arlington, VA</i> To support AEO's 15th Annual Conference and Membership Meeting in May 2005.</p> <p>El Puente Community Development Corporation \$8,000 <i>El Paso, TX</i> To support the first meeting of the Women and Social Enterprise Network in Montreal, Québec, Canada.</p> <p>Social Enterprise Alliance \$3,000 <i>Columbus, OH</i> To sponsor the Stoweflake Funders Retreat.</p> <p>Fairy Godmother Fund ACCION New York \$5,000 <i>New York, NY</i> To help the Mitad del Mundo Cyber Center expand into a larger location and purchase additional computers.</p> <p>Appalachian Center for Economic Networks (ACEnet) \$5,000 <i>Athens, OH</i> To accelerate the Village Bakery and Café's expansion and to better manage the inventory for increased food orders.</p> <p>Women's Rural Entrepreneurial Network \$5,000 <i>Bethlehem, NH</i> To further build the educational component of the business WriteLine, LLC.</p> <p>Peer to Peer Exchanges Association for Enterprise Opportunity (AEO) \$5,000 <i>Arlington, VA</i> To support Peer-to-Peer: The Microenterprise Domestic Violence Initiative.</p> <p>Association for Enterprise Opportunity (AEO) \$8,000 <i>Arlington, VA</i> To support AEO's 15th Annual Conference and Membership Meeting in May 2005.</p> <p>Women and Labor Fund Carolina Alliance for Fair Employment \$10,000 <i>Greenville, SC</i> To support changes in legislation that give workers the right to see their own personnel records.</p> <p>Center for Community & Corporate Ethics \$50,000 <i>Washington, D.C.</i> To study the impact of large corporations on society and develop standards for responsible corporate behavior.</p>	<p>Committee Against Anti-Asian Violence \$10,000 <i>Bronx, NY</i> To provide general support for Domestic Workers United.</p> <p>Mississippi Workers' Center for Human Rights \$10,000 <i>Greenville, MS</i> To support the Women in Leadership Project, providing women of color an opportunity to participate in training sessions and community hearings before Mississippi legislators.</p> <p>Tenants' and Workers' Support Committee \$10,000 <i>Alexandria, VA</i> To support leadership and civic participation by low-income Latina immigrant and African American women as they work for racial and economic justice.</p> <p>Voces de la Frontera \$10,000 <i>Milwaukee, WI</i> To support efforts to educate low-wage and immigrant Latina workers about their employment rights and to advocate for policy change.</p> <p>Health and Safety New Partners New Initiatives ACCESS/Women's Health Rights Coalition \$20,000 <i>Oakland, CA</i> To defeat the proposed state Parental Notification Initiative and to win substantive changes in the Medi-Cal policy in order to reduce delays and improve access to abortion and prenatal care.</p> <p>Advocates For Youth \$20,000 <i>Washington, D.C.</i> To strengthen Advocates for Youth in Arizona and/or Washington State and their support of the work of Ms. Foundation grantees with sexuality/reproductive rights information, policy, education, organizing and advocacy.</p> <p>Applied Research Center \$25,000 <i>Oakland, CA</i> To support research and documentation of the New Partners, New Initiatives project, including how diverse institutions can use organizing as a strategy to build support for sexuality education.</p> <p>Asian Communities for Reproductive Justice \$20,000 <i>Oakland, CA</i> To provide general support for ACRJ's Grassroots Organizing and Reproductive Justice Movement Building project.</p> <p>Choice USA \$20,000 <i>Washington, D.C.</i> To strengthen Choice USA in Arizona and/or Washington State and their support of the work of Ms. Foundation grantees with sexuality/reproductive rights information, policy, education, organizing and advocacy.</p>	<p>Family Planning Association of Chelan-Douglas Co. \$5,000 <i>Wenatchee, WA</i> To support media opportunities and disseminate the Learning Curves publication, the executive summary of the New Partners, New Initiatives program.</p> <p>Georgians for Choice \$50,000 <i>Atlanta, GA</i> To provide a two-year general support grant for Georgia's statewide coalition for women's reproductive freedom.</p> <p>Illinois Caucus for Adolescent Health \$25,000 <i>Chicago, IL</i> To support ICAH's Illinois Campaign for Responsible Sex Education project, working to ensure that sex education in Illinois is comprehensive, effective, positive, and medically accurate.</p> <p>Luz Social Services \$5,000 <i>Tucson, AZ</i> To support media opportunities and disseminate the Learning Curves publication, the executive summary of the New Partners, New Initiatives program.</p> <p>Migrant Health Promotion \$25,000 <i>Progresso, TX</i> To support La Voz Latina—The Voice of Latinas in Government Program, including a national advocacy visit to federal policymakers in Washington, D.C.</p> <p>Missouri Religious Coalition for Reproductive Choice \$10,000 <i>St. Louis, MO</i> To support MO RCRC's public education and advocacy programs, including Black Women's Health Council, Black Church Initiative, Clergy for Choice, and Spiritual Youth for Reproductive Freedom.</p> <p>NARAL Pro-Choice New Mexico \$25,000 <i>Albuquerque, NM</i> To strengthen existing outreach and civic participation programs that expand and develop leadership in NARAL Pro-Choice New Mexico's activist base.</p> <p>National Asian Pacific American Women's Forum \$10,000 <i>Washington, D.C.</i> To fund a convening.</p> <p>Northwest Communities' Education Center \$5,000 <i>Granger, WA</i> To support media opportunities and disseminate the Learning Curves publication, the executive summary of the New Partners, New Initiatives program.</p> <p>Northwest Women's Law Center \$20,000 <i>Seattle, WA</i> To strengthen the Reproductive Freedom Network, including engaging Ms. Foundation grantees in Washington state.</p>	<p>Odyssey Youth Center \$60,000 <i>Spokane, WA</i> To provide additional staff, conduct liaison work with other youth organizations and expand their youth-based diversity panels and trainings.</p> <p>Odyssey Youth Center \$5,000 <i>Spokane, WA</i> To support media opportunities and disseminate the Learning Curves publication, the executive summary of the New Partners, New Initiatives program.</p> <p>Pennsylvanians for Choice \$25,000 <i>Philadelphia, PA</i> To continue and expand PFC's organizing, public education, training, and advocacy efforts, with a specific focus on Medicaid cuts that reduce access to reproductive health care.</p> <p>SIECUS \$20,000 <i>New York, NY</i> To strengthen SIECUS in Arizona and/or Washington State and their support of the work of Ms. Foundation grantees with sexuality/reproductive rights information, policy, education, organizing and advocacy.</p> <p>Southeastern Arizona Behavioral Health Services \$5,000 <i>Sierra Vista, AZ</i> To support media opportunities and disseminate the Learning Curves publication, the executive summary of the New Partners, New Initiatives program.</p> <p>West Virginia Free \$30,000 <i>Charleston, WV</i> To support WV Free's work to increase their coalition membership through a new e-mail alert system.</p> <p>Reproductive Rights Coalition and Organizing Fund 9 to 5 Colorado \$20,000 <i>Denver, CO</i> To involve low-wage working women through voter registration, education and mobilization activities to ensure that their voices are heard and that issues that affect them are part of the electoral debate.</p> <p>ACCESS/Women's Health Rights Coalition \$10,000 <i>Oakland, CA</i> To build leadership, support overall advocacy efforts, and strengthen messaging and media work.</p> <p>ACLU of Pennsylvania Foundation \$1,000 <i>Philadelphia, PA</i> To support consultant services for the Training and Access Working Group meeting.</p> <p>Adolescent Pregnancy Prevention Coalition of NC \$20,000 <i>Chapel Hill, NC</i> To support the Grassroots Advocacy Project for comprehensive sex education.</p>	<p>Asian Communities for Reproductive Justice \$10,000 <i>Oakland, CA</i> To advance a proactive Reproductive Freedom agenda in California.</p> <p>Basic Rights Oregon \$20,000 <i>Portland, OR</i> To support the "No on Constitutional Amendment 36" campaign.</p> <p>California Coalition for Reproductive Freedom \$25,000 <i>Sacramento, CA</i> To broaden their base of support, and to help them defeat the Parental Notification ballot initiative.</p> <p>California Latinas for Reproductive Justice \$25,000 <i>Los Angeles, CA</i> To provide general support.</p> <p>Childspace Cooperative Development, Inc. \$12,300 <i>Philadelphia, PA</i> To support voter engagement activities, including the project "Dialogue with and by Childcare Workers on the Vote," focusing on voter education, registration, and get out the vote efforts among childcare workers.</p> <p>Cine Qua Non, Inc. \$5,000 <i>New York, NY</i> To support the "Rights! Camera! Action!" film festival, educating and mobilizing a diverse national audience on the topic of reproductive rights and health.</p> <p>Civil Liberties and Public Policy at Hampshire College \$20,000 <i>Amherst, MA</i> To support the New Leadership New Initiative project, a movement-expanding project with a wide diversity of young and emerging leaders in the field of reproductive rights.</p> <p>Colorado Organization for Latina Opportunity and Reproductive Rights (COLOR) \$50,000 <i>Denver, CO</i> A two-year grant to develop a comprehensive sexuality education curriculum for Latinas, complete a new organizational strategic plan, organize and conduct a Latina summit, and develop an organizational Web site.</p> <p>Colorado Organization for Latina Opportunity and Reproductive Rights (COLOR) \$10,000 <i>Denver, CO</i> To provide general support through the second year of a two-year grant.</p> <p>Illinois Caucus for Adolescent Health \$10,000 <i>Chicago, IL</i> To continue to advocate for comprehensive sex education through research, a multi-media campaign, and activism training to educate legislators and mobilize constituents on sexuality issues.</p>	<p>Institute of Women and Ethnic Studies \$10,000 <i>New Orleans, LA</i> To support the Physician Mobilization Project, aiming to increase the number of physicians of color skilled and willing to provide comprehensive reproductive health services to women of color.</p> <p>Justice Now \$20,000 <i>Oakland, CA</i> To support the Right to Family Project, helping women in prison to educate other prisoners and the public about how the prison system damages families and communities of color.</p> <p>Latino Issues Forum \$10,000 <i>San Francisco, CA</i> To disseminate a new report by the Latina Reproductive Rights Advocacy Project based on reproductive rights focus groups with Latinas in the community.</p> <p>Minnesota Organization on Adolescent Pregnancy Prevention and Parenting \$20,000 <i>St. Paul, MN</i> To support the Adolescent Pregnancy Prevention Advocacy Project, educating youth staff, health care professionals, educators, faith leaders and community members in how to advocate for pregnancy prevention.</p> <p>Missouri Religious Coalition for Reproductive Choice \$20,000 <i>St. Louis, MO</i> To provide general support.</p> <p>Montana Women Vote \$10,000 <i>Missoula, MT</i> To support GOTV voter engagement as it coordinates statewide voter registration and conducts community outreach to constituency groups and organizations.</p> <p>NARAL Pro-Choice New Mexico \$10,000 <i>Albuquerque, NM</i> To support GOTV voter engagement activities, aimed at increasing voter participation by educating New Mexicans about their voting rights and the public policy issues that impact their lives.</p> <p>National Latina Institute for Reproductive Health \$40,000 <i>New York, NY</i> To provide a two-year grant supporting the Latinas Organizing for Leadership and Advocacy project, organizing Latina leaders to advance a united policy agenda on reproductive justice issues.</p> <p>Native American Community Board \$20,000 <i>Lake Andes, SD</i> To support the Indigenous Women's Reproductive Health and Rights Program.</p>
--	--	--	---	--	--

Utah Progressive Network \$25,000
Salt Lake City, UT
 To support the Gender Justice Program engaging diverse constituencies to reframe reproductive rights, expand the definition of reproductive health and justice, and implement organizing campaigns.

Women's Voices for the Earth \$10,000
Missoula, MT
 To continue to support women's reproductive health protection in Montana and the northern Rocky Mountain states.

Women's Voices for the Earth \$20,000
Missoula, MT
 To support the Phase-Out Mercury Products in Montana project, educating and engaging women about the reproductive health risks associated with mercury exposure.

West Virginia Free \$4,000
Charleston, WV
 To provide technical assistance for a board retreat and training.

Young Women United \$25,000
Albuquerque, NM
 To provide a general operating grant to support YWU's Circle of Strength program to build their membership base and organize for comprehensive sexuality education in the Albuquerque public school system.

Young Women's Leadership Conference \$10,000
Boston, MA
 To bring together young women to attend political conventions that develop leadership skills and relationships.

Women and AIDS African Services Committee, Inc. \$15,000
New York, NY
 To support Mobilizing African Immigrant Women on HIV/AIDS, a program designed to build advocacy capacity for African immigrant women through training and issue education.

AIDS Services of Austin, Inc. \$15,000
Austin, TX
 To empower HIV-positive women with education, community and support systems, and leadership and advocacy skills to address HIV/AIDS political issues.

Aniz, Inc. \$10,000
Atlanta, GA
 To support "Reaching Out to Sisters with HIV/AIDS" advocacy training for African American HIV-positive women in Georgia.

Christie's Place \$10,000
San Diego, CA
 To support Project SPEAK Up, a peer-based leadership initiative designed to build self-esteem, provide trainings and offer skill building opportunities for HIV-positive women.

Courage Unlimited, Inc. \$10,000
North Las Vegas, NV
 To support the HIV Impact and Prevention Project, which trains HIV-positive women as peer educators and community activists.

Mujeres Unidas Contra el SIDA \$15,000
San Antonio, TX
 To support Saber es Poder, a project to empower the *madrinas* (godmothers) who act as peer-educators to women with HIV/AIDS and help them participate in local, state and national advocacy work.

Sisterhood Mobilized for AIDS/HIV Research and Treatment \$15,000
New York, NY
 To provide general support.

Southwest Boulevard Family Health Care \$10,000
Kansas City, KS
 To support HIV University, Kansas City, a program that offers information, advocacy training and support groups to HIV-positive women.

Virgin Islands Community AIDS Resource & Education, Inc. (VICARE) \$15,000
Christiansted, VI
 To support the Women Together for Change project, working to strengthen the leadership and advocacy skills of women living with HIV/AIDS on the island of St. Croix.

Women Alive Coalition \$15,000
Los Angeles, CA
 To support Sisters Alive—Hearing Our Voices, a program that advocates for policy, legislation and resources for women of color infected with HIV/AIDS.

Women Organized to Respond to Life-Threatening Diseases \$10,000
Oakland, CA
 To provide general support.

Women's Resource Center \$15,000
Columbia, SC
 To support the Phenomenal Women program, promoting the personal and professional development of women living with HIV/AIDS who are committed to working and serving in the HIV/AIDS community.

Safety Amnesty International USA \$15,000
New York, NY
 To support a research project, "No Shelter from Violence: Domestic Violence and Homelessness and Housing," examining the effects of U.S. housing policies on women fleeing abuse.

Asian & Pacific Islander American Health Forum \$15,000
San Francisco, CA
 To support (En)gendering Change: Principles & Strategies for Transforming Gender Roles in Asian and Pacific Islander Communities.

The Black Church and Domestic Violence Institute \$30,000
Atlanta, GA
 To hire an events manager to coordinate training, technical assistance, and meeting dates with emphasis on managing the Wellspring Clergywomen's Alliance engagements.

Center for Family Policy and Practice \$30,000
Madison, WI
 To develop collaborations between fatherhood organizations and domestic violence organizations.

The Center for the Study of Sport in Society \$20,000
Boston, MA
 To support the Mentors in Violence Prevention Program.

Center for Young Women's Development \$15,000
San Francisco, CA
 To provide general support, including weekly discussion groups and recommendations for city government regarding violence in the lives of young women.

Close to Home Domestic Violence Prevention Initiative \$30,000
Dorchester, MA
 To provide general support, including supporting the implementation of three resident-driven accountability/safety projects.

Creative Interventions \$20,000
Oakland, CA
 To provide general support.

East End Community Services Corporation \$20,000
Dayton, OH
 To provide general support.

Eastern Kentucky University \$20,000
Richmond, KY
 To create change on campus by supporting collaboration between the Men Against Rape Society and the Women's Activists group.

Family Violence and Rape Crisis Services, Inc. \$25,000
Pittsboro, NC
 To engage men in preventing and reducing violence against women by supporting a community-led effort called Men for Family Peace.

Family Violence Prevention Fund Domestic Violence \$10,000
San Francisco, CA
 To fund the creation of the Susan Schechter Activist Fellowship Initiative to honor and continue the work of a pioneer anti-violence activist, supporting new leadership among survivors of domestic violence.

Family Violence Prevention Fund \$15,000
San Francisco, CA
 To support From Prisons to Prevention, a policy and communications campaign to shift criminal justice resources.

Federated Dorchester Neighborhood Houses, Inc. \$4,000
Dorchester, MA
 To hire a fundraising consultant to identify potential funding sources and build organizational capacity to effectively fundraise.

Fund for One Manhattan Inc. \$5,000
New York, NY
 To examine the benefits and challenges of New York State's mandatory arrest statute for domestic violence crimes.

GenderPAC \$5,000
Washington, D.C.
 To support the Violence Prevention Program and Gender Tour activities.

Generation Five \$30,000
San Francisco, CA
 To support development of new curricula, trainer manuals and trainee materials, and underwrite Training of Trainers sessions in the Bay Area, New York City and Atlanta.

Generation Five/Bay Area Collaborative United to Prevent Child Sexual Abuse \$25,000
Antioch, CA
 To develop and share analyses, processes, training tools and materials among communities and populations the Bay Area Collaborative serves, and to conduct focused capacity building in four communities.

HOMEY \$30,000
San Francisco, CA
 To create materials aimed at deconstructing culturally accepted gender roles.

Incite! Women of Color Against Violence \$20,000
Ann Arbor, MI
 To support the Police Violence/Community Accountability Campaign.

International Child Resource \$20,000
San Francisco, CA
 To address violence against women, with youth in the Mission district of San Francisco.

Joseph J. Peters Institute \$30,000
Philadelphia, PA
 To train local community members on how to recognize and intervene in situations that indicate the occurrence of child sexual abuse.

Louisiana Coalition Against Domestic Violence \$30,000
Baton Rouge, LA
 To support the expansion of the LGBTQ project, consisting of four community-directed groups working to increase recognition of partner abuse in the LGBTQ community and ways to encourage community members to intervene.

Men Can Stop Rape \$20,000
Washington, D.C.
 To support the national Strength Training Program in providing young men with the knowledge, skills and support to prevent gender violence.

National Coalition of Anti-Violence Programs, Inc. \$20,000
New York, NY
 To enhance community-driven responses to lesbian, gay, bisexual and transgender domestic violence.

National Organization of Sisters of Color Ending Sexual Assault \$20,000
Canton, CT
 To provide general support.

New York City Community Response Collaborative \$25,000.00
Brooklyn, NY
 To support an outreach plan to engage diverse communities in education, healing and organizing around child sexual abuse response and prevention.

Northwest Network of Bi, Trans, Lesbian and Gay Survivors of Abuse \$30,000
Seattle, WA
 To prevent domestic violence in the lives of LGBTQ people.

Pennsylvania Coalition Against Rape \$2,500
Enola, PA
 To help support a reception honoring the 10th Anniversary of the Violence Against Women Act, in September 2004.

Raksha, Inc. \$30,000
Atlanta, GA
 To continue to build support and action against child sexual abuse in the South Asian community through support to the Breaking the Silence Project.

Safe Shores, D.C. Children's Advocacy Center \$5,000
Washington, D.C.
 To support Safe Shores Stop the Silence Race.

The Safe Zone Foundation \$20,000
Honolulu, HI
 To support Girl Fest Hawaii, a yearlong outreach program for middle and high school students that addresses themes like body image, gender-based violence and sexism.

Strategies Against Violence Everywhere (SAVE) \$20,000
Columbus, Ohio
 To support Media Violence and Women: Educating for Change Project, aimed to educate women and men of color in low-income neighborhoods about negative images and violence towards women in the media.

Texas Association Against Sexual Assault \$20,000
Austin, TX
 To support the Students Taking Action for Respect project, organizing, training and supporting youth advocates.

Texas Council on Family Violence \$30,000
Austin, TX
 To support the People's Empowerment Project, working to create alternative approaches to survivor safety and violence prevention.

Girls, Young Women and Leadership Collaborative Fund for Youth-led Social Change The Appalachian Women's Leadership Project \$10,000
Hamlin, WV
 To build capacity by increasing fundraising activities that broaden and grow the Appalachian Women's Leadership Project's financial support base.

Asian Immigrant Women Advocates \$10,000
Oakland, CA
 To conduct a three-year planning process and hire two Asian Youth United trainers to better understand the role of intergenerational leadership in the Asian Immigrant Women Advocates organization.

Blocks Together \$10,000
Chicago, IL
 To give Blocks Together the opportunity to assess its administrative needs and the ultimate direction for its programs over time.

Center for Young Women's Development \$10,000
San Francisco, CA
 To give the Center for Young Women's Development the opportunity to assess its administrative needs and the ultimate direction for its programs over time.

Girl Scouts of Milwaukee Area \$10,000
Milwaukee, WI
 To assess and share lessons learned through the Girl Scouts of Milwaukee's CAT program, involving social action activities for girls.

Khmer Girls In Action \$500
Long Beach, CA
 To support and train young Cambodian women in Long Beach on how to research, analyze, create solutions, take action, and evaluate issues and concerns that impact their lives and community.

Khmer Girls In Action \$10,000
Long Beach, CA
 To find an executive director, and to support staff development, program structure, evaluation and the development of a five-year strategic plan.

Massachusetts Coalition for Occupational Safety and Health, Inc. \$10,000
Dorchester, MA
 To cover administrative costs and increase funding for additional staff hours to achieve greater impact with constituents.

One Nation Enlightened <i>Denver, CO</i> To give One Nation Enlightened the opportunity to assess its administrative needs and the ultimate direction for its programs over time.	\$10,000	National Latina Institute for Reproductive Health <i>New York, NY</i> To advance NLIHR's National Policy Agenda for Reproductive Justice.	\$57,834	Women's Funding Network <i>San Francisco, CA</i> To support the Women's Funding Network 21st Annual Conference Scholarship.	\$10,000	Western Prison Project <i>Portland, OR</i> To support leadership development, community education and outreach, and direct lobbying to move a criminal justice reform agenda forward.	\$20,000	National Women's Alliance <i>Washington, D.C.</i> To support NWA's Young Women of Color Executive Director Retreat, a leadership program that provides support and training for women in fields related to human rights and social justice.	\$1,000	Gwich'in Steering Committee <i>Fairbanks, AK</i> To support an individual's participation in the Peace and Dignity Journey.	\$2,000
PEARLS for Teen Girls, Inc. <i>Milwaukee, WI</i> To produce a curriculum exploring the development of teen girls to share lessons learned about teen leadership development during PEARLS' time in the collaborative fund.	\$10,000	The Rebecca Project for Human Rights <i>Washington, D.C.</i> To support advocacy work for low-income mothers struggling with economic marginalization, substance abuse, access to family-oriented treatment and the criminal justice system.	\$57,834	Democracy Funding Circle Children's Defense Fund, Southern Rural Black Women's Initiative <i>Jackson, MS</i> To provide general support to the Southern Rural Black Women's Initiative for Economic and Social Justice.	\$20,000	Wider Opportunities for Women <i>Washington, D.C.</i> To conduct a pilot project designed to increase the voices of women and girls in three predominantly rural states in order to promote social and economic equity for low-income women, including women of color.	\$20,000	Political Research Associates <i>Somerville, MA</i> To support the Jean Hardisty Legacy Fund.	\$1,000	Matilda Joslyn Gage Foundation <i>Fayetteville, NY</i> To provide general support.	\$7,500
Sista II Sista <i>Brooklyn, NY</i> To give Sista II Sista the opportunity to assess its administrative needs and the direction for its programs over time.	\$10,000	Sophia Fund Cangleska, Inc. <i>Kyle, SD</i> To change individual and institutional beliefs justifying the oppression of Native women.	\$17,166	Critical Resistance/Justice Now <i>Oakland, CA</i> To reduce society's reliance on prisons, create alternatives and to mitigate the impact of the crisis by empowering communities and women of color.	\$20,000	Women's Organization for National Prohibition Reform <i>Mill Spring, NC</i> To support base building, provide general support and funds for convening.	\$20,000	Proteus Fund <i>Amherst, MA</i> To support the State Strategies Fund's Amassing Resources Conference, aimed at stimulating aggressive new thinking about ways grassroots organizations pursuing state power strategies can raise funds and resources.	\$1,000	New York Abortion Access Fund <i>New York, NY</i> To support the "I Had An Abortion Campaign," designed to further open discussions and to create space to talk about the experience of abortion.	\$2,500
Sisters in Action for Power <i>Portland, OR</i> To give Sisters in Action for Power the opportunity to assess its administrative needs and the direction for its programs over time.	\$10,000	Communications Consortium Media Center <i>Washington, D.C.</i> To build communications capacity in the women's movement so that organizations can tell their stories effectively to the media, the public and policy-makers.	\$10,000	Delaware Valley Association for the Education of Young Children <i>Philadelphia, PA</i> To address the critical shortage of public funding for childcare services.	\$20,000	Discretionary Funds Board Discretionary Fund Women's Leadership Fund/ White House Project <i>New York, NY</i> To support the Women's Leadership Fund.	\$100,000	Women and Philanthropy <i>Washington, D.C.</i> To provide general support.	\$2,000	Social Agenda for the Caregiver Credit Campaign <i>New York, NY</i> To produce and distribute a feminist comic book.	\$5,000
The Young Women's Project <i>Washington, D.C.</i> To hire Management Assistant Group to help The Young Women's Project conduct a strategic planning effort.	\$10,000	Funders for Lesbian and Gay Issues <i>New York, NY</i> To support the National Lesbian and Gay Community Funding Partnership.	\$10,000	Idaho Women's Network <i>Boise, ID</i> To support research and policy development, and political education and media work.	\$20,000	Women's Leadership Fund/ White House Project <i>New York, NY</i> To assist grantee in moving to and establishing new office space and headquarters.	\$20,000	Women's Environment and Development Organization <i>New York, NY</i> To support the Bella Abzug Leadership Institute, preparing young women to be proactive, principle-driven leaders in fields that transform society and our political system for the betterment of women.	\$1,000	Women Make Movies <i>New York, NY</i> To complete NO!, a documentary on intra-racial rape and sexual assault in the African-American community.	\$5,000
Girls Leadership Team Khmer Girls In Action <i>Long Beach, CA</i> To find an executive director, and to support staff development, program structure, evaluation and the development of a five-year strategic plan.	\$500	National Council of Women's Organizations <i>Washington, D.C.</i> To support New Faces, More Voices, a summer leadership training program.	\$10,000	The Interfaith Alliance of Idaho <i>Boise, ID</i> To encourage more progressive people of faith to participate in the democratic process.	\$20,000	President's Discretionary Fund Applied Research Center <i>Oakland, CA</i> To ensure racial, geographic and issue diversity at the Race and Public Policy: A Proactive Agenda for 2005 and Beyond conference.	\$1,000	Gloria Steinem Fund Advocacy for Patients with Chronic Illness, Inc. <i>Farmington, CT</i> To support continued and expanded advocacy work for patients with chronic illnesses.	\$10,000	Women's Environment and Development Organization <i>New York, NY</i> To support the Bella Abzug Leadership Institute, preparing young women to be proactive, principle-driven leaders in fields that transform society and our political system for the betterment of women.	\$2,500
Democracy and Power Public Voices (WOC) Alliance of Early Childhood Professionals <i>Minneapolis, MN</i> To offer advocacy and development work in support of a trained, diverse and well-paid early childhood workforce.	\$75,000	National Latina Institute for Reproductive Health <i>New York, NY</i> To advance a National Policy Agenda for Reproductive Justice.	\$17,166	Low-Income Families' Empowerment through Education: LIFETIME <i>San Leandro, CA</i> To empower low-income mothers to complete postsecondary education and training, and to support policy work that gets families off of welfare and out of poverty.	\$20,000	Center for the Advancement of Women <i>New York, NY</i> To continue building a network of committed individuals to ensure that the experiences of women's lives and their priorities reach opinion leaders, policy makers, and women.	\$5,000	Communications Consortium Media Center <i>Washington, D.C.</i> To support the Next Step Women's Granny Vote project, increasing voter turnout and political involvement of older women regardless of political affiliation.	\$5,000	The Women's Social Policy and Research Center at Vanderbilt University <i>Nashville, TN</i> To support the qualitative study, "Barriers and Bridges: Immigrant Women and Work in Tennessee", examining immigrant women's contributions to Nashville's economy and culture.	\$3,000
Asian Immigrant Women Advocates <i>Oakland, CA</i> To support continued work with low-income Asian immigrant women and youth to improve their living and working conditions.	\$75,000	National Women's Law Center <i>Washington, D.C.</i> To provide general support.	\$15,000	Montana Human Rights Network <i>Helena, MT</i> To provide general support.	\$20,000	Communications Consortium Media Center <i>Washington, D.C.</i> To support the Next Step Women's Granny Vote project, increasing voter turnout and political involvement of older women regardless of political affiliation.	\$3,000	Crohn's & Colitis Foundation of America <i>New York, NY</i> To print and distribute 140 copies of "Know Your Rights: A Handbook for Patients with Inflammatory Bowel Disease" to those unable to afford it.	\$6,000	Marie C. Wilson Leadership Fund Women's Leadership Fund/ White House Project <i>New York, NY</i> To support the Vote, Run, Lead initiative.	\$200,000
California Indian Basketweavers Association <i>Grass Valley, CA</i> To support empowerment of Native American women.	\$75,000	Proteus Fund <i>Amherst, MA</i> To support the State Strategies Fund, a grant making and capacity building program supporting statewide efforts with grassroots community groups to create social change.	\$10,000	National Network for Immigrant and Refugee Rights <i>Oakland, CA</i> To engage diverse immigrant communities throughout the country and bring their views and concerns into the national debate on immigration.	\$20,000	National Center for Human Rights Education <i>Atlanta, GA</i> To assist the Arab Women's Gathering Organizing Collective with planning and outreach for a national gathering.	\$3,000	The Feminist Press <i>New York, NY</i> To support the Tillie Olsen Fund, promoting women writers worldwide.	\$1,000	Girls Speak Out Foundation <i>San Francisco, CA</i> To provide graphic design and technical support to launch a new Web site and promote the Caged Bird Sings Project.	\$5,000
Cangleska, Inc. <i>Kyle, SD</i> To change individual and institutional beliefs justifying the oppression of Native women.	\$57,834	The Rebecca Project for Human Rights <i>Washington, D.C.</i> To support advocacy work for low-income mothers struggling with economic marginalization, substance abuse, access to family-oriented treatment and the criminal justice system.	\$17,166	Progressive Leadership Alliance of Nevada <i>Reno, NV</i> To support campaigns that focus on racial and economic justice issues, including criminal justice reform, felon re-enfranchisement and organizing tax issues that impact low-income women, seniors and people of color.	\$20,000	National Network of Grantmakers <i>Minneapolis, MN</i> To support the People of Color Caucus and provide general support.	\$1,000				
Colonias Development Council <i>Las Cruces, NM</i> To continue to build leadership among colonia women and encourage civic participation and policy advocacy.	\$75,000	Women and Philanthropy <i>Washington, D.C.</i> To provide general support.	\$10,000	Rural Organizing Project <i>Scappoose, OR</i> To train volunteers to use "welcome wagons" to establish deeper relationships with their 2004 election contacts.	\$20,000						

FY 2006 Grants

<p>Economic Security Women and Labor Fund Center for Community & Corporate Ethics \$10,000 <i>Washington, D.C.</i> To study the impact of large corporations on society and develop standards for responsible corporate behavior.</p> <p>Domestic Workers United, Committee Against Anti-Asian Violence \$20,000 <i>Bronx, NY</i> To support the New York Statewide Campaign for a Domestic Workers Bill of Rights.</p> <p>Mississippi Poultry Workers' Center \$10,000 <i>Morton, MS</i> To convene staff and grassroots leaders and other organizations in the region who organize poultry workers.</p> <p>Mississippi Workers' Center for Human Rights \$10,000 <i>Greenville, MS</i> To strengthen MWCHR's work with black women leaders in the Mississippi Delta and other parts of the state.</p> <p>Tenants' and Workers' Support Committee \$20,000 <i>Alexandria, VA</i> To support grantees' efforts to increase living wages and expand the power of low-income women and girls in regional and national policy formation.</p> <p>United Students Against Sweatshops \$10,000 <i>Washington, D.C.</i> To bring the issue of sweatshop labor to the forefront of campus dialogue and mandate that colleges and universities take responsibility for their profitable participation in a garment industry with widespread worker exploitation.</p> <p>Voces de la Frontera \$20,000 <i>Milwaukee, WI</i> To continue to support the organization's Worker Center and Issue Campaigns.</p> <p>Health and Safety Reproductive Rights Coalition and Organizing Fund Abortion Access Project \$2,000 <i>Cambridge, MA</i> To support a media training for the Hospital Access Collaborative Annual 2005 Conference.</p> <p>ACCESS/Women's Health Rights Coalition \$35,000 <i>Oakland, CA</i> To support the Raising Voices, Expanding Access Project, an effort to mobilize constituents around specific advocacy campaigns and to provide opportunities for women to have a voice in policy decisions.</p> <p>Advocates For Youths \$10,000 <i>Washington, D.C.</i> To allow Advocates for Youth to lend its assistance and expertise to the Foundation's state-based sex education project.</p>	<p>Asian Communities for Reproductive Justice \$20,000 <i>Oakland, CA</i> To provide general support for ACRJ's projects including the Sisters in Action for Issues of Reproductive Empowerment (SAFIRE) and Participatory Research, Organizing, and Leadership Initiative for Safety and Health (POLISH) programs.</p> <p>California Coalition for Reproductive Freedom \$25,000 <i>Sacramento, CA</i> To provide general support to help CCRF reframe the agenda and language in the reproductive sexual health and rights movement.</p> <p>California Latinas for Reproductive Justice \$25,000 <i>Los Angeles, CA</i> To provide general support to improve the current political climate for reproductive health and rights in California through targeted policy advocacy, coalition building and community education, and communication strategies.</p> <p>Colorado Organization for Latina Opportunity and Reproductive Rights (COLOR) \$6,000 <i>Denver, CO</i> To help develop a new strategic plan through four months of preplanning and an intensive two-day retreat.</p> <p>Education Fund of Family Planning Advocates of NYS \$20,000 <i>Albany, NY</i> To support Get the Facts NY.</p> <p>Illinois Caucus for Adolescent Health \$50,000 <i>Chicago, IL</i> To support the Illinois Campaign for Responsible Sex Education as a part of the Ms. Foundation's Sex Ed Advocacy Initiative.</p> <p>Illinois Caucus for Adolescent Health \$40,000 <i>Chicago, IL</i> To support the Illinois Campaign for Responsible Sex Education project to ensure that sex education in Illinois is comprehensive, effective, positive and medically accurate, and to support the Sexual Health-Care Access Initiative.</p> <p>Institute of Women and Ethnic Studies \$1,000 <i>New Orleans, LA</i> To support Hurricane Katrina relief efforts.</p> <p>Migrant Health Promotion \$45,000 <i>Progreso, TX</i> To support La Voz Latina—The Voice of Latinas in Government, training community health care workers to advocate for improved access to reproductive health care for low-income, minority women.</p>	<p>Minnesota Organization on Adolescent Pregnancy Prevention and Parenting \$25,000 <i>St. Paul, MN</i> To support the Adolescent Pregnancy Prevention Project, designed to increase the adoption and implementation of science-based public policies for adolescent reproductive health and pregnancy prevention at state and local levels.</p> <p>Missouri Religious Coalition for Reproductive Choice \$40,000 <i>St. Louis, MO</i> To support public advocacy and education projects that organize people of various faiths to advocate for access to complete reproductive healthcare.</p> <p>NARAL Pro-Choice America Foundation \$5,000 <i>Washington, D.C.</i> To focus on the Supreme Court nomination of Justice John Roberts, conducting a nationwide campaign to educate the public about his anti-choice record.</p> <p>NARAL Pro-Choice Montana Foundation, Montana Reproductive Rights Coalition \$50,000 <i>Helena, MT</i> To support the Montana Healthy Youth initiative and Montana Reproductive Rights Coalition to identify threats to reproductive rights and provide resources to articulate the values of the pro-choice vision.</p> <p>NARAL Pro-Choice New Mexico \$25,000 <i>Albuquerque, NM</i> To support the New Mexico Reproductive Health Access Project and strengthen existing outreach and civic participation programs.</p> <p>NARAL Pro-Choice Oregon Foundation \$20,000 <i>Portland, OR</i> To support NARAL's participation in the Oregonians for Choice coalition to fight the anti-choice parental notification measure on the 2006 Oregon ballot.</p> <p>NARAL Pro-Choice Washington Foundation \$40,000 <i>Seattle, WA</i> To support the Campaign for Real Sex Education through media outreach, training parents to be advocates in their local school district, and collaborating with coalition partners in continued legislative advocacy.</p> <p>National Network of Abortion Funds \$1,000 <i>Boston, MA</i> To support Hurricane Katrina relief efforts.</p>	<p>New Mexico Teen Pregnancy Coalition \$50,000 <i>Albuquerque, NM</i> To support the New Mexico Coalition to Support Sexuality Education as they create advocacy toolkits to use in communities throughout New Mexico and train allies to advocate for comprehensive sexuality education.</p> <p>Odyssey Youth Center \$45,000 <i>Spokane, WA</i> To provide general support to hire additional staff and two interns, conduct liaison work with other youth organizations, and expand their youth panels and trainings.</p> <p>Pennsylvanians for Choice \$30,000 <i>Philadelphia, PA</i> To support Women's Law Project to mobilize constituents to support a multi-issue state-based women's agenda.</p> <p>Planned Parenthood Federation of America \$20,000 <i>New York, NY</i> To help expand and redesign the Sex Education Advocacy Strategy Session program to train all grantee partners involved in the Ms. Foundation's Sex Education Advocacy Initiative.</p> <p>Planned Parenthood League of Massachusetts \$50,000 <i>Boston, MA</i> To support Comprehensive Sex Education Advocacy.</p> <p>Planned Parenthood of Georgia \$30,000 <i>Atlanta, GA</i> To support the Campaign for Responsible Sex Education.</p> <p>Pro-Choice Public Education Project \$3,000 <i>New York, NY</i> To provide general support to the 2005 "Harlem Nights" fundraiser.</p> <p>Pro-Choice Public Education Project \$5,000 <i>New York, NY</i> To provide general support for educating young women about reproductive freedom and choice, thereby developing a new generation of pro-choice leaders and supporters.</p> <p>SIECUS \$20,000 <i>New York, NY</i> To support continuing public policy and advocacy efforts, education and training, public information and communication strategies.</p> <p>Sister Song Women of Color Reproductive Health Collective \$5,000 <i>Atlanta, GA</i> To support SisterSong Reproductive Justice Briefing for Funders & Activists.</p>	<p>Survivors, Inc. \$10,000 <i>Mattapan, MA</i> To provide general support for organizing drives in community welfare offices around the interrelated issues of welfare, access to healthcare, reproductive rights and immigrant rights.</p> <p>Western States Center \$20,000 <i>Portland, OR</i> To provide targeted technical assistance, training and convening to support organizations working for gender justice.</p> <p>Women's Voices for the Earth \$35,000 <i>Missoula, MT</i> To support Mercury and Reproductive Justice, a project linking reproductive rights and environmental health.</p> <p>West Virginia Free \$45,000 <i>Charleston, WV</i> To provide general support to launch a statewide media and public education campaign.</p> <p>Young Women United \$7,000 <i>Albuquerque, NM</i> To provide development coaching and board leadership training through consultant services.</p> <p>Young Women United \$70,000 <i>Albuquerque, NM</i> To support the Circle of Strength, a youth-led organizing project geared toward changing sexuality education policies in local middle schools.</p> <p>Women and AIDS Fund African Services Committee, Inc. \$20,000 <i>New York, NY</i> To support Mobilizing African Immigrant Women on HIV/AIDS, a program designed to build advocacy capacity among African immigrant women through training and issue education.</p> <p>AIDS Services of Austin, Inc. \$20,000 <i>Austin, TX</i> To empower HIV-positive women with education, community and support systems, and leadership and advocacy skills to address HIV/AIDS political issues.</p> <p>Aniz, Inc. \$10,000 <i>Atlanta, GA</i> To support "Reaching Out to Sisters with HIV/AIDS" advocacy training for African American HIV-positive women in Georgia.</p> <p>Babes Network \$10,000 <i>Seattle, WA</i> To support the Theater for Development project.</p> <p>Christie's Place \$20,000 <i>San Diego, CA</i> To support Project SPEAK Up!</p>	<p>Courage Unlimited, Inc. \$10,000 <i>North Las Vegas, NV</i> To support the HIV Impact and Prevention Project.</p> <p>Helping Everyone Receive Ongoing Effective Support (HEROES) \$1,000 <i>Columbia, LA</i> To support Hurricane Katrina relief efforts.</p> <p>Mujeres Unidas Contra el SIDA \$20,000 <i>San Antonio, TX</i> To support Saber es Poder, a project to empower the <i>madrinas</i> (godmothers) who act as peer-educators to women with HIV/AIDS and help them participate in local, state, and national advocacy work.</p> <p>Sisterhood Mobilized for AIDS/HIV Research and Treatment \$20,000 <i>New York, NY</i> To provide general support.</p> <p>Southwest Boulevard Family Health Care \$15,000 <i>Kansas City, KS</i> To support HIV University, Kansas City, a program that offers information, advocacy training and support groups to HIV-positive women.</p> <p>Women Alive Coalition \$20,000 <i>Los Angeles, CA</i> To support Sisters Alive—Hearing Our Voices, a program that advocates for policy, legislation and resources for women of color infected with HIV/AIDS.</p> <p>Women Organized to Respond to Life-Threatening Diseases \$20,000 <i>Oakland, CA</i> To provide general support.</p> <p>Women's Lighthouse Project \$1,000 <i>Denver, CO</i> To provide general support.</p> <p>Safety Amnesty International USA \$15,000 <i>New York, NY</i> To support a research project, "No Shelter from Violence: Domestic Violence and Homelessness and Housing," examining the effects of U.S. housing policies on women fleeing abuse.</p> <p>The Center for the Study of Sport in Society \$20,000 <i>Boston, MA</i> To support Mentors in Violence Prevention Program.</p> <p>Center for Young Women's Development \$15,000 <i>San Francisco, CA</i> To provide general support.</p> <p>Creative Interventions \$25,000 <i>Oakland, CA</i> To provide general support.</p>
---	---	--	---	--	--

East End Community Services Corporation \$20,000
Dayton, OH

To support a collaborative project with the Artemis Center for Alternatives to Domestic Violence to end the generational cycle of domestic violence and child abuse in inner city Dayton, OH.

Eastern Kentucky University \$20,000
Richmond, KY

To create change on campus by supporting collaboration between the Men Against Rape Society and the Women's Activists group.

Family Violence and Rape Crisis Services, Inc. \$35,000
Pittsboro, NC

To engage men in preventing and reducing violence against women by supporting a community-led effort called Men for Family Peace.

Family Violence Prevention Fund \$15,000
San Francisco, CA

To fund the Susan Schechter Fellowship.

Family Violence Prevention Fund \$15,000
San Francisco, CA

To support national policy work on behalf of battered women and their children.

Generation Five \$30,000
San Francisco, CA

To support development of new curricula, trainer manuals and trainee materials, and underwrite Training of Trainers sessions in the Bay Area, New York City and Atlanta.

Joseph J. Peters Institute \$35,000
Philadelphia, PA

To train local community members to recognize at-risk behaviors for perpetrators of child sexual abuse and provide intervention strategies for ending it.

Louisiana Coalition Against Domestic Violence \$15,000
Baton Rouge, LA

To support Hurricane Katrina emergency efforts.

Louisiana Coalition Against Domestic Violence \$35,000
Baton Rouge, LA

To support the End Partner Abuse Now project, increasing accountability in the LGBTQ community and among LGBTQ batterers and developing a plan for increasing safety for LGBTQ communities in Los Angeles.

Louisiana Foundation Against Sexual Assault \$15,000
Hammond, LA

To provide support in the aftermath of Hurricane Katrina.

National Organization of Sisters of Color Ending Sexual Assault \$30,000
Canton, CT

To provide general support.

Northwest Network of Bi, Trans, Lesbian and Gay Survivors of Abuse \$30,000
Seattle, WA

To support activities and programs that prevent domestic violence in the lives of LBGT people.

Pennsylvania Coalition Against Rape \$20,000
Enola, PA

To provide general support.

Raksha, Inc. \$35,000
Atlanta, GA

To support the Breaking the Silence Project, building support and action against child sexual abuse in the South Asian community.

Stop the Silence, Inc. \$5,000
Bowie, MD

To provide support for Stop the Silence's annual fundraiser.

Texas Association Against Sexual Assault \$25,000
Austin, TX

To organize, train and support youth advocates by funding the Students Taking Action for Respect project.

Texas Council on Family Violence \$30,000
Austin, TX

To create alternative approaches to survivor safety and violence prevention by funding the People's Empowerment Project.

Democracy and Power Democracy Funding Circle

Children's Defense Fund, Southern Rural Black Women's Initiative \$11,000
Jackson, MS

To help develop a Cultural Heritage Tourism Corridor that highlights the contributions of rural black women in Alabama, Georgia and Mississippi.

Critical Resistance/Justice Now \$11,000
Oakland, CA

To support rural-based public education focused on alternatives to prisons both in California and in the hurricane-impacted Gulf Region.

Delaware Valley Association for the Education of Young Children \$11,000
Philadelphia, PA

To fund statewide organizing, leadership training, printing and mailing.

Idaho Women's Network \$11,000
Boise, ID

To continue to support broad-based coalition work against the ban on same sex marriages.

The Interfaith Alliance of Idaho \$11,000
Boise, ID

To build a stronger progressive movement in Idaho through expanded community organizing.

Low-Income Families' Empowerment through Education: LIFETIME \$11,000
San Leandro, CA

To empower low-income mothers to complete postsecondary education and training, and to support policy work that gets families off of welfare and out of poverty.

Montana Human Rights Network \$11,000
Helena, MT

To develop strong local support for human rights through grassroots organizing, coalition building, right-wing research and LGBT civil rights policy work.

National Network for Immigrant and Refugee Rights \$11,000
Oakland, CA

To continue to build capacity that strengthens and empowers immigrant communities.

Progressive Leadership Alliance of Nevada \$11,000
Reno, NV

To continue to support advocacy and policy work focused on immigration, voter engagement and racial justice.

Rural Organizing Project \$11,000
Scappoose, OR

To expand past successes that helped previously unknown voters become active and progressive leaders.

Western Prison Project \$11,000
Portland, OR

To strengthen base building and advocacy work in Oregon.

Wider Opportunities for Women \$11,000
Washington, D.C.

To continue to develop and expand a policy and advocacy agenda rooted in economic justice.

Women's Organization for National Prohibition Reform \$11,000
Mill Spring, NC

To support chapter and membership development and training.

Katrina Women's Response Fund ACLU of Mississippi \$15,000
Jackson, MS

To support continued "Know Your Government" and "Know Your Rights" workshops, and to create a position for a woman leader to spearhead "Women of Color Leadership" workshops giving women voice where they have traditionally been silent.

All Congregations Together (ACT) \$30,000
New Orleans, LA

To hire organizers and pastors sensitive to the culture of and communities in New Orleans.

Boat People SOS \$30,000
Falls Church, VA

To develop a women's group in Biloxi, MS to help displaced women overcome the barriers of language, achieve a voice in the community, and add leadership development to their rebuilding efforts.

Children's Defense Fund, Southern Rural Black Women's Initiative \$45,000
Jackson, MS

To support CDF's work advocating for the implementation of a 3-5 year work force training initiative and progressive welfare reform.

Coalition for Citizens with Disabilities \$15,000
Jackson, MS

To assist individuals and family members in Mississippi with community outreach focused on housing, education and benefits issues and to expand the "Pathways" program that trains individuals on advocacy initiatives and helps them maintain contact with legislators.

Common Ground Collective \$20,000
Vallejo, CA

To rebuild basic infrastructure and support women's centers, childcare initiatives, transportation, volunteer training and leadership in New Orleans.

Critical Resistance/Justice Now \$20,000
Oakland, CA

To rebuild the infrastructure and capacity of the Southern Regional Louisiana office by purchasing needed resources, creating a full-time coordinator position, and hiring a media consultant.

Friends and Families of Louisiana's Incarcerated Children \$15,000
Lake Charles, LA

To refocus funding policies towards the creation of schools and away from rebuilding detention centers, and to support services and programs that give youth the tools they need to empower themselves.

Helping Everyone Receive Ongoing Effective Support (HEROES) \$5,000
Columbia, LA

To respond to the aftermath of Hurricane Katrina.

Institute for Women's Policy Research \$15,000
Washington, D.C.

To support the Status of Women in New Orleans project.

Jeremiah Group \$30,000
Harvey, LA

To cover operating costs so they can continue to advocate for empowering the residents of the city to be involved in political discussions and decisions that impact their everyday lives.

Lafayette Restoration Center \$30,000
Lafayette, LA

To address women and children's poverty and health issues in the state and to support evacuees seeking health care who have relocated to other states and municipalities.

Louisiana Housing Alliance \$20,000
Franklin, LA

To support the expansion of job-readiness and homeowner assistance programs that LHA offered before Hurricane Katrina.

Mississippi Immigrant Rights Alliance (MIRA) \$15,000
Jackson, MS

To support rebuilding efforts in Mississippi with a focus on immigrant rights and access to services.

Mississippi Low Income Childcare Initiative \$40,000
Biloxi, MS

To promote the economic well being of women by helping them navigate the social service and childcare systems.

Mississippi Workers' Center for Human Rights \$45,000
Greenville, MS

To open a Jackson, MS office to further MWCHR's work with black, female workers who have been disenfranchised by Hurricane Katrina.

NAACP Mississippi \$40,000
Jackson, MS

To develop a networking process with women of color throughout the state through regional and local gatherings, and to support a larger end-of-the-year convening to discuss a specific legislative agenda.

National Coalition On Black Civic Participation \$50,000
Washington, D.C.

To support women's roundtable discussions focused on establishing a networking initiative for women of color committed to civic participation in public policy, especially related to the Hurricane Katrina rebuilding process.

New Orleans Neighborhood Development Collaborative \$30,000
New Orleans, LA

To promote neighborhood diversity in New Orleans by increasing resident influence over rebuilding and rezoning plans created by elected officials and appointed bodies without the input of impacted communities.

North Gulfport Community Land Trust \$20,000
Gulfport, MS

To purchase land to build new homes and protect against further gentrification.

United Houma Nation Relief Fund \$40,000
Raceland, LA

To provide relief to mothers and children affected by the hurricane devastation and training for women in non-traditional work roles such as carpentry and construction.

Wider Opportunities for Women \$20,000
Washington, D.C.

To support a grassroots campaign for rebuilding in the region and WOW's role as a resource that brings groups together for discussions on wages, economic development and women's job training.

Women's Funding Network (WFN) \$634,039
San Francisco, CA

To fund WFN's response to Hurricane Katrina and to support five women's funds also working on Katrina response efforts.

YWCA Baton Rouge \$10,000
Baton Rouge, LA

To support "Comfort for Kids," offering training to parents—many single mothers of color—to help them better communicate with their children about the trauma they experienced during Hurricane Katrina.

Public Voices (WOC) Alliance of Early Childhood Professionals \$15,000
Minneapolis, MN

To support advocacy and development work for a trained, diverse and well-paid early childhood workforce.

Asian Immigrant Women Advocates \$55,000
Oakland, CA

To support continued work with low-income Asian immigrant women and youth to improve their living and working conditions.

California Indian Basketweavers Association \$55,000
Grass Valley, CA

To support empowerment of Native American women.

Cangleska, Inc. \$30,000
Kyle, SD

To change individual and institutional beliefs justifying the oppression of Native women.

Colonias Development Council \$25,000
Las Cruces, NM

To continue to build leadership among Colonia women and encourage civic participation and policy advocacy.

National Latina Institute for Reproductive Health \$40,000
New York, NY

To advance NLIHR's National Policy Agenda for Reproductive Justice.

Sophia Fund ASMA Society \$4,000
New York, NY

To support the Muslim Women Leader's Forum at the Aspen Institute in the fall of 2006.

Dare to Lead: Giving to the Ms. Foundation for Women

Cangleska, Inc.	\$20,000	Discretionary Funds	Demos	\$10,000
<i>Kyle, SD</i>		Board Discretionary Fund	<i>New York, NY</i>	
To change individual and institutional beliefs justifying the oppression of Native women.		Women's Leadership Fund/ White House Project	To support the Demos Women's Empowerment Initiative.	
Funders for Lesbian and Gay Issues	\$10,000	<i>New York, NY</i>	First Nations Development Institute	\$20,000
<i>New York, NY</i>		To support the Vote, Run, Lead initiative.	<i>Fredericksburg, VA</i>	
To provide general support.		President's Discretionary Fund	To support the First People's Worldwide Program.	
National Council of Women's Organizations	\$10,000	Astraea Lesbian Foundation for Justice	Native American Community Board	\$3,500
<i>Washington, D.C.</i>		<i>New York, NY</i>	<i>Lake Andes, SD</i>	
To support the summer leadership training program, New Faces, More Voices.		To convene the host committee for the "Accidental Fundraiser Book Party," in September 2005, sponsored by the Astraea Lesbian Foundation for Justice.	To fund a full page advertisement in South Dakota's largest newspaper informing the public about current bills in the state legislature affecting women's reproductive rights.	
National Latina Institute for Reproductive Health	\$15,000	MADRE	Off Our Backs	\$5,000
<i>New York, NY</i>		<i>New York, NY</i>	<i>Washington, D.C.</i>	
To advance a National Policy Agenda for Reproductive Justice.		To help support Indigenous women's participation in the Association for Women's Rights in Development Forum, <i>How Does Change Happen?</i>	To support its news journal.	
National Women's Law Center	\$10,000	New World Foundation	Public Education Network	\$1,000
<i>Washington, D.C.</i>		<i>New York, NY</i>	<i>Washington, D.C.</i>	
To provide general support.		To support the Alston/Bannerman Fellowship Program, a sabbatical program for organizers of color.	To provide general support.	
Proteus Fund	\$10,000	Resource Generation/ Making Money Make Change	Rural Development Leadership Network	\$5,000
<i>Amherst, MA</i>		<i>Cambridge, MA</i>	<i>New York, NY</i>	
To support the State Strategies Fund, a grant-making program focused on long-term collaborative strategies that marshal the power of grassroots community groups.		To support the November 2005 Making Money Make Change Retreat.	To convene a "Rural Women's Exchange" in New York.	
The Rebecca Project for Human Rights	\$5,000	Women for Afghan Women	The Shoulders We Stand On: Women as Agents of Change	\$3,000
<i>Washington, D.C.</i>		<i>Flushing, NY</i>	<i>New York, NY</i>	
To support advocacy work for low-income mothers struggling with economic marginalization, substance abuse, access to family-oriented treatment and the criminal justice system.		To support Faith and Feminism Dialogues.	To support the author Louse Bernikow's writing and lectures on women's roles as agents of social change.	
Southeast Regional Economic Justice Network	\$3,000	Women of Color Resource Center	Women's Media Center	\$20,000
<i>Durham, NC</i>		<i>Oakland, CA</i>	<i>New York, NY</i>	
To support an April convening of 15-20 African American women who are grassroots and professional fundraisers in the Southeast.		To support a convening on global women's strategies for human rights.	To provide general support.	
Women and Philanthropy	\$15,000	Women's eNews	Women's World	\$1,000
<i>Washington, D.C.</i>		<i>New York, NY</i>	<i>New York, NY</i>	
To provide general support.		To provide general support.	To support grantee's efforts to educate the public about gender-based censorship and help defend feminist writers' freedom of expression.	
Women of Color Resource Center	\$10,000	Gloria Steinem Fund	Marie C. Wilson Leadership Fund	
<i>Oakland, CA</i>		Advocacy for Patients with Chronic Illness, Inc.	TV By Girls	\$10,000
To support a convening on global women's strategies for human rights.		<i>Farmington, CT</i>	<i>Minneapolis, MN</i>	
Women's eNews	\$5,000	To support continued and expanded advocacy work for patients with chronic illnesses.	To provide general support.	
<i>New York, NY</i>		American Refugee Committee International	Women Donors Network	\$10,000
To provide general support.		<i>Minneapolis, MN</i>	<i>Menlo Park, CA</i>	
Women's Funding Network	\$10,000	To support the Participatory Communication Project in its work to prevent gender-based violence.	To support the WDN Reproductive Justice Circle.	
<i>San Francisco, CA</i>		Aubin Pictures		
To support WFN's 22nd Annual Conference by providing grants to member funds from regions outside of the U.S. enabling their participation.		<i>New York, NY</i>		
		To fund a documentary film.		
		The Correctional Association of New York		
		<i>New York, NY</i>		
		To support the Women in Prison Project.		

The Ms. Foundation for Women supports thousands of women leaders and their organizations in diverse urban and rural areas across the United States. We are uniquely positioned to link local, regional and national work and leaders for the greatest impact.

The Foundation needs your help to bring the experience and solutions of women and girls to their communities and to public policy decision making. From attending one of the Ms. Foundation's special events, to joining the President's Circle or one of our collaborative funds, the Ms. Foundation offers many opportunities to get involved in its work:

- > Make an unrestricted gift and increase the Ms. Foundation's ability to respond quickly to problems and opportunities with flexible, proactive grantmaking.
- > Support our annual events.
- > Establish a Donor-Advised Fund with an initial contribution of \$50,000 and an additional \$100,000 gift within the first two years of establishing the fund.
- > Create a bequest or trust naming the Ms. Foundation as a beneficiary of your estate.
- > Make a gift in honor or in memory of a friend, relative, partner or someone else you admire. We will notify the person or her/his friends and family of your thoughtfulness.
- > Contribute to our endowment, ensuring your legacy and the Foundation's long-term success.
- > Designate your gift to one of the Foundation's program areas. We can help you to explore opportunities that match your interests.

The Ms. Foundation is grateful for gifts of cash, stocks, bonds and in-kind contributions. For more information about our program areas and how to give, please contact our Development Staff at (212) 709-4452. Or, visit the Ways to Give section on our Web site at www.ms.foundation.org for additional information or to donate online.

Partners in Philanthropy

Representing contributions made between July 1, 2004 and June 30, 2006

Institutional Donors

\$100,000 and above

Bonus Fund
The Brico Fund
California Wellness Foundation
Marguerite Casey Foundation
Robert Sterling Clark Foundation
The Dobkin Family Foundation
Ewing Marion Kauffman Foundation
The Ford Foundation
Fund of Abundance
General Service Foundation
The William and Flora Hewlett Foundation
W.K. Kellogg Foundation
Lifetime Entertainment Services
The Linked Foundation
McKay Foundation
Moriah Fund, Inc.
New York Life Insurance Company
Ortho-Women's Health & Urology (a division of Ortho-McNeil Pharmaceutical, Inc.)
David and Lucile Packard Foundation
Public Welfare Foundation

\$50,000 - \$99,999

American Express Company
The Arca Foundation
Citigroup Foundation
Gill Foundation
Leo S. Guthman Fund
Levi Strauss Foundation
Merrill Lynch & Co., Inc.
Open Society Institute
The Scherman Foundation
Shaler Adams Foundation
Wells Fargo Foundation
The Mary Wohlford Foundation

\$25,000 - \$49,999

Amalgamated Bank of New York
American Express Foundation
AT&T Foundation
Goldman Sachs
Hearst Magazines
John M. Lloyd Foundation
Katten Muchin Rosenman LLP
KPMG LLP
The Tomorrow Foundation, Inc.
The Underdog Fund of the Tides Foundation

\$10,000 - \$24,999

The Loreen Arbus Foundation
Avon Products, Inc.
Annie E. Casey Foundation

Claire's Stores, Inc.
Dickler Family Fund
Dominick & Dominick Falcon Fund
Fannie Mae Foundation
Ford Motor Company
French American Charitable Trust
Wallace Alexander Gerbode Foundation
Girl's Best Friend Foundation and Cynthia McLachlan
Global Fund for Women
Hill-Snowdon Foundation
JetBlue Airways
J.P. Morgan Chase
Katz Media Group
The Klarman Family Foundation
Lehman Brothers
Leo Model Foundation
Macy's East
MetLife
MTV Networks
Neuberger Berman
Nokomis Foundation
Northrop Grumman
Patterson Belknap Webb & Tyler LLP
Albert Penick Fund
Quixote Foundation
Reebok Human Rights Foundation
Robert Wood Johnson Foundation
Sonya Staff Foundation
Threads for Humanity
Urgent Action Fund
Women's Funding Network

\$5,000 - \$9,999

The Isabel Allende Foundation
Anonymous Donors (2)
Deloitte & Touche
The Diller-von Furstenberg Family Foundation
Jacobs Family Foundation
Levine Plotkin & Menin, LLP
Morgan Lewis
Morris Family Foundation
Paul, Weiss, Rifkind, Wharton & Garrison LLP
SkinKlinik
Sundance Channel
Verizon

\$1,000 - \$4,999

ACLU Foundation, Inc.
ACLU of Northern California
Adelphi University
American Express Foundation
Matching Gifts Program
Anonymous Donor
BOSLEY
Broadthink
Caleo Resort & Spa
ChevronTexaco
Comedy Central
Daffy's Inc.

Domino's Pizza
Estée Lauder Companies, Inc.
Feminist Majority Foundation
Free Spirit Publishing
Grand Valley State University
H.A. Schupf & Co.
HarperCollins Publishers
The Hotchkiss School
Kasnachey Family Fund
Kimpton Hotel & Restaurant Group, LLC
Leader & Berkon, LLP
Michael Levine Search Consultants
Nordstrom
Ogilvy & Mather Worldwide
Oxygen Media LLC
People for the American Way Foundation
PepsiCo Foundation
Planned Parenthood Los Angeles and Mary Jane Waglé
Post Ranch Inn at Big Sur
Scripps Networks
Side by Side LLC
Silver Mountain Foundation for the Arts
Sokol Communications, Inc.
Trio Foundation
Turner Broadcasting System, Inc.
Twentieth Century Fox
Unleash, Inc.
Warner Brothers Entertainment Inc.
Winky Foundation
Women Donors Network
The Women's Foundation of California
The Women's Foundation of Colorado
The Women's Foundation of Minnesota
Zero Main

\$500 - \$999

The Astraea Lesbian Foundation for Justice
Cars4Charities
EuroAmerican Communication, Inc.
Hill, Betts & Nash LLP
Mandarin Oriental, New York
National Network to End Domestic Violence Fund
Northern Trust Company
The Praxis Project
Raising Change Tribe, Inc.
Unisys Corporation
Valley Women's Club
The White House Project
Working Assets

\$250 - \$499

Community Resource Exchange
Fleishman Hillard Inc.
Hudson-Webber Foundation
Matching Gifts Program
Lederer Foundation
The Manfred W. Ehrich Trust
Morgenthal Frederics
Network for Good
Professionals for Nonprofits
Stong Services
Stuart Weitzman

Representing contributions made between July 1, 2004 and June 30, 2006

Individual Donors

\$100,000 and above

Anonymous Donors (4)
Anne Delaney
Quinn Delaney and Wayne Jordan
Abigail E. Disney
Katherine Grover and Michael J. Campbell
Susan and Charles Knight
Lilo and Gerard Leeds
Lucia Woods Lindley
Sidne Long
Alida R. Messinger
Elizabeth Sawi

\$50,000 - \$99,999

Anonymous Donor
Irene and Jack Banning
Helen LaKelly Hunt
Nancy Meyer and Marc Weiss
Janet W. Prindle
Catherine Raphael
Lynne P. Rosenthal
Erin Rossitto
Deborah R. Salkind
Carol H. Tolan Fund of the New York Community Trust

\$25,000 - \$49,999

Nancy Aronson and Virginia Besthoff
Matt Groening
Caroline P. Hirsch
Polly H. Howells and Eric Wertham
Marion and Irwin Kaplan
Sandy Lerner/Ayrshire Farm
Emily A. Rosenberg
Estate of Barbara Sherman
Carolann Kelly Stiles, Esq.
Jenny Warburg

\$10,000 - \$24,999

Nancy and Douglas Abbey
Anonymous Donor
Freya and Richard Block
Dennis Burns
Susan Dickler

Mrs. Phyllis Friedman
Susan A. Grode
Leigh Hallingby
Karen and Steve Hillenburg
Graceva T. Howard
Kristina Kiehl and Robert Friedman
Rochelle Korman
Susan and Phillip Marineau
Friedrike Merck
Wenda Weekes Moore
Rebecca and Michael Neidorf
Yoko Ono Lennon
Susan Penick
Estate of Jane Sherwin Schwartz
Mary Lou and George Shott
Patricia J.S. Simpson
Ann and Andrew Tisch

\$5,000 - \$9,999

Anonymous Donors (3)
Patricia T. Carbine
Elizabeth Colton
Jeannie Diefenderfer
Terry Satinover Fagen
Allison Fine
William Goldman
Sara K. Gould and Rick Surpin
Catherine and John Grover
Susan Hessel
Kathryn S. Hirsch
Valerie Jacobs
Denise Kleis
Suzanne and Robert Levine
Margaret and Bill Lynch
Katharine B. Mountcastle
Carol Pencke
Alyce M. Russo and Steven M. Schall
Valerie Salenbier
Mary Beth Salerno
Susan Sandler
Ann and Herbert Siegel
Ashley H. Snowdon
Sara Stuart
Marlo Thomas and Phil Donahue
Diane von Furstenberg
Carolyn F. Webber
Carolyn Whittle
Margo and Irwin Winkler

\$1,000 - \$4,999

Estelle C. Adler
Emeline Sobieski Adwers
Alan and Arlene Alda
William and Barbara Alesi
Duff P. Anderson
Anonymous Donors (10)
Lorraine Antoniello
Loretta A. Barrett
Amy Batchelor and Bradley A. Feld
Laurie Beard
Marilyn and Alan Bergman
Nancy Bernstein
Jen Bilik
Eileen and Joel Birnbaum

Elizabeth T. Boris
Colette Brooks
Denise Scott Brown
Lucinda and Robert Bunnen
David Campbell
Helen Bill Casey
Denise E. Cavanaugh
Jennifer Chalsty
Jill and John Chalsty
Susan Nora Clark
Sheila Collins
Bernice Colman
Camille O. and William Cosby
Alan Croll
Annette P. Cumming
Suzanna M. deBaca
Astrid Delafield
Mr. and Mrs. Robert O. Delaney
Kathleen Dore and Keith Jepsen
Dina Dublon
Ingrid and Stephen Dyott
Debra Poretsky Ekman
Mrs. Eleanor Elliott
Letitia and William Ellis
Jonathan Estrin
Jane Forman
Judy Francis-Zankel
Eleanor Friedman and Jonathan Cohen
Jane Friedman
Suzanne Frye, M.D.
Nancy Hult Ganis
Adrienne Germain
Jill and James Gibson
Patricia L. Glaser and Sam Mudie
Deborah Goldberg and Thomas Bernhard
Sharna Goldseker
Lynda M. Goldstein
Monica Graham
Debra and Mark Green
Barbara Grodd
Nadine Hack
Susan Hanson, M.D.
Jean V. Hardisty
Fredda and Jay Harris
Lois Cowles Harrison
John Hartman
Margaret L. Hempel
Susan J. Herlin
Anne Helen Hess and Craig Kaplan
Esther B. Hewlett
Kevin Hogan and Tim Croak
Mary and James Hotaling
Gale Anne Hurd
Mary and Douglas Ireland
Bari S. Johnson
Joan and William Johnson
Judy M. Judd
Ann F. Kaplan
Carole and Mark Kaufmann
Gladys Kessler
Natalie and Arthur Kessler
Carol Freyn King
Robert King
Ann Kolker

Tamara J. Kreinin
Helen P. Ladd
Lorene S. Lamb
Deborah J. Landau
Deborah and Rocco Landesman
Marta Jo Lawrence
Barbara F. Lee
Mildred Robbins Leet
Elly Lessin
Andrea Levere and Michael Mazerov
Adam Levine
Amy C. Liss
Elizabeth S. and Richard W. Lyman
Dolly L. Maass
Nancy and Kevin McKay
Diana Meehan and Gary David Goldberg
Kathy and Craig Miller
Gail Milliken
Nancy Milliken
John Montgomery
Beth Moore
Jessica A. Neuwirth
Margaret Newell
Jessye Norman
Kay and Peter Nosler
Jane Orday
Richard Pechter
Iara Peng
Jill Perry
Sarah Peter
Rosemarie and Richard Petrocelli
Sally Pick
Marnie S. Pillsbury
Letty Cottin Pogrebin and Bert Pogrebin
Brette E. Popper
Amy K. Posner and Deborah Novak
Lynn Povich and Stephen Shephard
Mr. and Mrs. Robert I. Rafford
Jeanne Raisler and Jon Cohn
Nancy Raymond
Denise Rich
Susan Wood Richardson and Randy Richardson
Francine Rivkin
Debbie and Eric Robb
Eve S. Rosahn and Marion Banzhaf
Leonard Rosman, Esq.
Leigh Royer and Frank Scheuer
Nancy and Miles Rubin
Judith A. Ruskowski and Ken Regal
Sheri Sandler
Dorothy and Carl Schneider
Lois Severini
Lorraine and Sid Sheinberg
Gloria and Alan Siegel
Ann Singer
Janet Singer
Alison Sirkus Brody
Susan and Bruce Slater

Helen and Thomas Spiro
Dighton Spooner
Diane Steingart
Kathleen Stephansen and Andrew D. Racine
Phyllis W. Stevens
Jill Storey
Dorine Holsey Streeter
Barkley J. Stuart and Ann B. Glazer
Suzanne Sunshine
Marcy Syms
Dorothy Q. Thomas
Judith R. Thoyer, Esq.
Three Bridge Trust
Aaron Toso
Kathleen Turner
Alice Walker
Chanel L. Walker
Jean Anne Waterstradt
Richard Weinberg
N. Matthew Welton
Diane Jordan Wexler
Donna and Walter Wick
Joanne Widzer
Honorable Constance Hess Williams
Caroline and Robert Williamson
J. Christine Wilson and Mary K. Collins
Marie C. Wilson and Nancy Lee
Helen and Oliver Wolcott
Kristen Wolf
Joanne Woodward and Paul Newman
Judith and David Yamada
Judith P. Yeakel

\$500 - \$999

Katherine Acey
Anonymous Donors (3)
Kimberly A. Baer
Allison and David Barlow-Ochshorn
Judith and Thomas Beckmen
Judy Belk and Roger A. Peeks
Jack Berg
Noel Berry and Paul Bruno
Cathleen P. Black and Thomas E. Harvey
Deborah W. Brown
Elizabeth E. Bruton
Christine Chimera
Cynthia and Paul Cleveland
Virginia Privateer Corsi
Nina D'Ambrada and Martin Goldberg
Mona J.E. Danner
Nancy L. Davenport
Susan Deaver
Jill and Robert Delaney
Katharine B. DernocoEUR
K.D. Dickinson
Barbara Dinsmore
Lucie Y. DuHamel
Joanne Edgar
Eileen and Richard Ekstract

Garth Evans
 Lucinda B. Ewing
 Diane V. Feeney
 Mary Ford
 Susan P. Fryberger
 Brandon Frye
 Iwao Fusillo
 Nina Gregg and Doug Gamble
 Mr. and Mrs. Theodore D. Gelman
 Sarah B. Glickenhau
 Lynn Gordon
 Francie Gorowitz
 Patti Anne Gabel
 Carey Graeber-Kozinn
 Geeta Rao Gupta
 Donna Hall
 Deborah and Daniel Hargraves
 Jane B. Hart
 William M. Hawkins, Jr.
 Lynn M. Itagaki
 Carol E. Jaspin, D.M.D.
 Candie Jones
 Nancy Cushing Jones and
 Steve Moses
 Todd M. Joseph
 Mary Lou Kennedy
 Mrs. James N. Kennedy
 Kwanghee Kim Lee
 Senator Sheila Kuehl
 Lisa A. Kyle
 Antoinette LaBelle
 Ruth Lambert and
 Henry S. Harrison
 Sue Lampson
 Kathie G. Larsen, Ph.D.
 Mary Carolyn Lee
 Lynn Hershman Leeson
 Andy Lester
 Steven Levere
 Lesley R. Levine and
 Na'Ama Firestone
 Elsa Limbach
 Aileen Louik
 Adrienne Lurie
 Leslie R. Malcolmson
 Jayme McLellan
 Jacqueline and
 Richard Meisenberg
 Sara E. Meléndez
 Dennis M. Meyers
 Elizabeth H. Naumburg and
 Carl J. Hoffman
 Beatrice Nold
 P. Marie O'Brien
 Amy and J.R. Orton
 Olga Perkovic
 Rita Posschl and Teryl
 Springstead
 Melanie Puckett
 Bonnie Raitt
 Claudia and Henry Ramos
 Kathleen A. Ream
 Nancy and Marc Roberts
 Elizabeth and Felix Rohatyn
 Phyllis and William Rosser
 Patricia A. Samuel
 Elizabeth M. Schmitt

Ava Seave
 Sarina Shanahan
 Mark A. Shapiro and
 Roberta S. Goldberg
 Lori Sherman and
 Edward M. Weber
 Susan Lewis Solomont and
 Alan D. Solomont
 Ronna Stamm
 Susan L. Steinhauser and
 Daniel Greenberg
 Brande Stelling
 George Stephanopoulos
 Catharine R. Stimpson
 Lisa E. Stone and Scott Cantor
 Lois M. Sturm
 Bonnie Stylides
 Evelyn Swenson
 Winnie Tam
 Sherilyn Thomas
 Evie Trevethan
 Jennifer S. Vanica
 Barbara Manfrey Vogelstein
 Joan M. Warburg
 Susan Weinberg
 Juliana and David Wheeler
 Mia White
 Lois Q. Whitman
 Peter Wilderotter
 Helen Winkler
 Wendy M. Wolf
 Rhonda D. Wright, M.D.
 Barbara Brizzi Wynne
 Anna Yang
 Mary Ellen Zellerbach

\$250 - \$499
 Rosalind and Robert Abernathy
 Patricia A. Alexander
 Keira Alexandra and Toby Barlow
 Anonymous Donors (10)
 Sona Aronian
 Virginia H. Baker
 Judith G. Bayard
 Kristine A. Bertness
 Barbara M. Blount
 Minx Boren
 Eva and David Bradford
 Sara S. Brandston
 Ethel S. Brody
 Sheila Brog
 Penny Wise Budoff, M.D.
 Sally Belinda Burda and
 Leonard Burda
 Barbara Burnim
 Jane and Gilbert Burns
 Ray H. Burton
 Annabel Caner
 Yvette Chalom
 Martha Fuller Clark
 Ana Alvarez Conigliaro
 Janet M. Conn
 Justine and Joel Coopersmith
 Sandra F. Coran
 Thomas C. Cosgrove
 Lorie Cowen-Levy
 Nicole Cox

Deborah C. Davis
 Anke Dening
 Laura Dennison
 Ruth Dickler
 Judy and Matthew Donner
 Patricia M. Dorman
 Lois Kuznets Dowling
 Kathy H. Drazen
 Derek Drymon
 Elisabeth K. Ecke
 Ish Elmas
 Sue and Paul Errington
 Thelma Estrin
 Myra Marx Ferree and
 G. Donald Ferree
 Maureen Wilson Footer
 Adonal Foyle
 Jill B. Freeman
 Barbara Friedberg
 Alan Friel and TJ Prokop
 Hilda Paug Fu
 Dorothy J. Fulton
 Caryn M. Ganz
 Reide L. Garnett
 Jeffrey H. Gildersleeve
 Amy Glickman
 Muriel E. Goldman
 Zadelle Krasow Greenblatt
 Nina Gregg and Doug Gamble
 Janet S. Hadley
 Marina Hahn
 Carlina Hansen
 Linda Harris
 Mary Jean Hayden
 Anne Heller
 Carol S. Herman
 Barbara Hershey
 Eileen Madden Hilliker
 Debra Hirshberg
 Jean L. Holley
 Suzette Hooper
 Barbara L. Howe and
 Arthur Protin
 Jean Humez
 C. Hunziker
 Rona Jaffe
 Virginia Ryan Joffe
 Chris Johnson
 Susan E. Jones
 Jane G. Kamps
 Elaine Kant
 Carolyn Tyirin Kirk
 Alexandra Kofsky and
 Aaron Joshua
 Elaine Krauss
 Tina Kroot
 Mary Anne Krupsak
 Katherine J. Laffey
 Louise Lamphere
 Theresa M. Larson
 Anne Parson Lazar and
 Paul Lazar
 Shirley E. Leary
 Jessica Lefke
 Joyce and Philip Lockhart
 Victor Mailey
 Anna and George Mallouk

Deborah Marrow
 V.J. Mastrobuono
 Cindy Melter
 Anne Messer
 Sue Miess
 Joanne Miller
 Sarah Anne Minkin
 Florence M. Monroe
 Mary Babcock Mountcastle
 Randa Roen Nachbar
 Marysa Navarro
 Gloria S. Neuwirth
 Rita C. Newhouse
 Elise Newman and
 Noah Morgan
 Kathleen R. Noe
 Patricia H. Passer
 Libby Patterson
 Cynthia Payne
 Alan Friel and TJ Prokop
 Debbie and Scott Pianin
 Sharon Pikus
 David Puchkoff
 Pat Rabby
 Craig Readman
 Bernardine Rice
 Angela S. Rich
 Sarah Beinecke Richardson and
 Craig Richardson
 Patsy Rogers
 Mary Sue Rose
 Cathy Salser
 Joanne Sandler and Ray Tekosky
 Lois Dianne Sasson
 Martha S. Scheeren
 Helen D. Schotanus
 Vera and Gregory Seekins
 Eleanor Sellstrom
 Corinne A. Servily
 Jean L. Holley
 Barbara E. Smith
 Sandra F. Smith
 Carolyn Sonfield
 Carolyn Linares Spears and
 William Worthington
 Carol and Edgar Stix
 Paula S. Strickstein
 Rosalie B. Swedlin and
 Robert Cort
 Alyssa Swenson
 Mary L. Thom
 Leland Thompson
 Sally Thompson
 Yvonne Thorstenson
 Darrin Thurman
 Rick Trautner
 Alice F. Wallace
 Maria T. Vullo
 Elizabeth Wehrle
 Ellen Weiss
 Patricia W. White
 Beth J. Wickler
 Mary B. Williams
 Leslie Willper
 Marilyn Woolley
 Cora Wortman

Myrth York and David B. Green
 Ernestine Young

Endowment Donors

*Representing gifts made from
 July 1, 2001 to June 30, 2006*

Anonymous Donors (4)
 Judy Belk
 Pamela Bogart
 The Brico Fund
 Anne Delaney
 Abigail E. Disney
 The Ford Foundation
 Sara K. Gould and Rick Surpin
 Katherine Grover and
 Michael J. Campbell
 Leo S. Guthman Fund
 Geeta Rao Gupta
 Dagmar L. Kohring
 Deborah and Rocco Landesman
 Andrea Levere and
 Michael Mazerov
 Lucia Woods Lindley
 McKay Foundation
 Sara E. Meléndez
 Alida R. Messinger
 The Philanthropic Collaborative
 Wendy D. Puriefoy
 Catherine Raphael
 Yolonda C. Richardson
 Diana I. Rigg
 Rockefeller Family Fund
 Lynne P. Rosenthal
 Lauren Katzowitz Shenfield
 Mary Lou and George Shott
 Gloria Steinem

Linda B. Strumpf
 Andrea Leigh Taylor
 Three Bridge Trust
 Miriam and John Wazeter
 J. Christine Wilson and
 Mary K. Collins
 Marie C. Wilson and Nancy Lee

Donations have been made in honor of:
 Joe Adams
 Eloise Ruby Alderman
 Grace Anthony
 Janna Baker
 Jennifer Barley
 Patricia Bell-Scott
 Kathy Bernstein
 Pamela Bogart's mother
 Susan Boyd
 Gina Brown and Susan Garner
 Jennifer Bryant
 Emily Casnocha
 Susan Catterall
 Ann Cohen
 Sarah Shepard Cohen
 Mr. and Mrs. Charles Cope
 Anne Delaney
 Quinn Delaney
 Susan Dickler
 Zoe and Olivia Elmas
 Tracy Flanagan
 Laura Flynn
 Alice Ford
 Debra Gardner
 Sara K. Gould
 Sandy Greenlee
 Susan Grode
 Katherine Grover
 Alice M. Hague

John Hale
 Myrna and Burt Hockberg
 Graceva T. Howard
 Starr James
 Dawn Johnson
 Eliana Jofthus
 Shirley T. Joseph
 Isabel Kohout and Family
 Robert Kuc and Family
 Merrie Turner Lightner
 Amy Liss
 Barbara Martinez
 Hope Morrisett
 Eileen Suzanne Oleet
 Alice, Liz, Nancy, Regan and
 Sarah Perlman
 Wendy Phoenix
 Sarah Quintana
 Emily Rodman and
 Jason Bremner
 Elizabeth Rogers and
 Kevin Webb
 Lori Roney
 Dana Sadleir
 Jean Sanville's niece
 Bernice Satin
 Judith Selzer
 Eunice Shatz and Arlene Alligood
 Lisa D. Sisson
 Gloria Steinem
 Kara Swindell
 The Fabulous Women of Unity's
 Eating Disorder Program
 Meghan Toso
 Terri Utley
 Laine Weinberg
 Marie C. Wilson
 B. J. Wishinsky

Women's Community Clinic
 Susan Yawman
 Carol Yesalonis

*Donations have been made
 in memory of:*
 Mrs. Doris Berg
 Lisa Calandra
 Deone Culbary
 Joan Engelke
 Betty Friedan
 Robert C. Gould
 Carol Jenkins' mother,
 Elizabeth Gardner Jenkins
 Coretta Scott King
 Christopher H. Kissel
 Lenna McXarbery
 Sigrid Jarpe Okerlund
 Josephine Rice
 Ann L. Siegel
 Darlene Taylor
 Ellen Jarpe Trunnell

*Our special thanks to all of those
 individuals, corporations and founda-
 tions that provided us with talent,
 time, goods and services voluntarily,
 and to all who contributed to the
 Ms. Foundation for Women through
 the Combined Federal Campaign,
 United Way, workplace giving
 programs and through matching
 gift programs.*

Statements of Financial Position as of June 30, 2005 and June 30, 2006

	2006				2005			
	Unrestricted	Temporarily Unrestricted	Permanently Restricted	Total All Funds	Unrestricted	Temporarily Unrestricted	Permanently Restricted	Total All Funds
ASSETS								
Current Assets								
Cash and cash equivalents	\$ 649,694	\$ 3,934,636		\$ 4,584,330	\$ 2,000,103	\$ 2,266,852		\$ 4,266,955
Pledges, grants and contributions receivable	131,935	1,060,000	547,313	1,739,248	146,850	405,000	1,123,745	1,675,595
Accrued interest receivable	132,904	7,408		140,312	111,650	10,886		122,536
Inventories, prepaid expenses and other receivables	44,717			44,717	67,211			67,211
Short-term investments		3,099,389		3,099,389	31,229	3,865,510		3,896,739
Total Current Assets	959,250	8,101,433	547,313	9,607,996	2,357,043	6,548,248	1,123,745	10,029,036
Non-Current Assets								
Pledges, grants and contributions receivable		59,393	356,075	415,468		217,817	671,223	889,040
Furniture, equipment and leasehold improvements, at cost, less accumulated depreciation and amortization of \$1,224,336 (1,175,566 for '05)	112,802			112,802	158,381			158,381
Art work	77,000			77,000	77,000			77,000
Rent security deposits	54,321			54,321	54,321			54,321
Long-term investments	2,363,307	322,590	23,330,749	26,016,646	512,860	428,157	22,151,512	23,092,529
Total Assets	\$ 3,566,680	\$ 8,483,416	\$ 24,234,137	\$ 36,284,233	\$ 3,159,605	\$ 7,194,222	\$ 23,946,480	\$ 34,300,307
LIABILITIES AND NET ASSETS								
Current Liabilities								
Accounts and accrued expenses payable	\$ 340,412	\$ 53,551		\$ 393,963	\$ 384,706	\$ 22,142		\$ 406,848
Deferred revenue	2,100			2,100	6,500			6,500
Grants payable	300,000	1,872,000		2,172,000	300,000	1,330,000		1,630,000
Total Current Liabilities	642,512	1,925,551		2,568,063	691,206	1,352,142		2,043,348
Non-Current Liability								
Grants payable	270,888			270,888	538,642			538,642
Total Liabilities	913,400	1,925,551		2,838,951	1,229,848	1,352,142		2,581,990
Net Assets								
Net Assets	2,653,280	6,557,865	24,234,137	33,445,282	1,929,757	5,842,080	23,946,480	31,718,317
Total Liabilities and Net Assets	\$ 3,566,680	\$ 8,483,416	\$ 24,234,137	\$ 36,284,233	\$ 3,159,605	\$ 7,194,222	\$ 23,946,480	\$ 34,300,307

Statements of Activities as of June 30, 2005 and June 30, 2006

	2006				2005			
	Unrestricted	Temporarily Unrestricted	Permanently Restricted	Total All Funds	Unrestricted	Temporarily Unrestricted	Permanently Restricted	Total All Funds
Revenues, Gains, and Other Support								
Grants and contributions	\$ 1,071,422	\$ 6,133,842	\$ 372,965	\$ 7,578,229	\$ 1,358,593	\$ 2,965,810	\$ 704,088	\$ 5,028,491
Special events	746,875			746,875	483,901			483,901
Investment income	519,741	229,607		749,348	231,659	149,883		381,542
Net realized gains/(loss) on investment transactions	1,532,492	(350)	(734)	1,531,408	510,822	278,188	318	789,328
Product and publication sales	17,658			17,658	103,067			103,067
In-kind contributions	13,156			13,156				
Other income	5,084			5,084	6,835			6,835
Total Revenues, Gains, and Other Support	3,906,428	6,363,099	372,231	10,641,758	2,694,877	3,393,881	704,406	6,793,164
Net Assets released from restrictions	5,743,291	(5,668,291)	(75,000)	-	5,917,679	(5,917,679)	-	-
Total Revenues, Gains, and Other Support	9,649,719	694,808	297,231	10,641,758	8,612,556	2,523,798	704,406	6,793,164
Expenses								
PROGRAM SERVICES								
Economic Security	677,136			677,136	461,138			461,138
Health and Safety	2,024,977			2,024,977	2,685,895			2,685,895
Girls, Young Women & Leadership	197,596			197,596	462,620			462,620
Public Education	758,942			758,942	824,961			824,961
Katrina Women's Response Fund	1,336,469			1,336,469				
Cross-Cutting Program Work	852,752			852,752	1,708,967			1,708,967
Donor Advised Grantmaking	114,500			114,500	79,636			79,636
Total Program Services	5,962,372			5,962,372	6,223,217			6,223,217
ENDOWMENT CAMPAIGN	311,876			311,876	356,711			356,711
SUPPORTING SERVICES								
Administrative and General	1,217,751			1,217,751	1,409,015			1,409,015
Fund Raising	1,266,194			1,266,194	1,191,245			1,191,245
Total Supporting Services	2,483,945			2,483,945	2,600,260			2,600,260
Total Expenses	8,758,193			8,758,193	9,180,188			9,180,188
Change in Net Assets before Net unrealized gains/(loss) on investment transactions	891,526	694,808	297,231	1,883,565	(567,632)	(2,523,798)	(704,406)	(2,387,024)
Net unrealized gains/(loss) on investment transactions	(168,003)	20,977	(9,574)	(156,600)	586,752	28,392	50,696	665,840
Change in Net Assets	723,523	715,785	287,657	1,726,965	19,120	(2,495,406)	(755,102)	(1,721,184)
Net Assets as of June 30, 2004					1,910,637	8,337,486	23,191,378	33,439,501
Net Assets as of June 30, 2005	1,929,757	5,842,080	23,946,480	31,718,317	1,929,757	5,842,080	23,946,480	31,718,317
Net Assets as of June 30, 2006	\$ 2,653,280	\$ 6,557,865	\$ 24,234,137	\$ 33,445,282				

Foundation Staff



PHOTO CREDIT: DAINE GREENE LENT

The staff of the Ms. Foundation for Women.

PRESIDENT'S OFFICE

Sara K. Gould
President & CEO

Andrea L. Briscoe
Human Resources Director
Strategic Diversity Management
Coordinator

Caroline Hotaling
Executive Assistant
to the President & CEO

DEVELOPMENT

Mary Oberman
Vice President
Development

Erika Croxton
Grant Writer

Tierney Gleason
Research and Donor
Services Specialist

Renée Joslyn
Corporation and Foundation
Relations Officer

Adriana Londono
Major Gifts Director

Perrie Rizzo
Events Associate

Carol Yesalonis
Development Systems
and Reports Associate

COMMUNICATIONS

Ellen Braune
Vice President
Communications

Elizabeth Hines
Senior Communications Manager

Sarah Quintana
Web Manager

Lyndsay Roller
Communications Assistant

PROGRAM

Susan Wefald
Vice President
Program

Julia Beatty
Program Officer
Girls, Young Women and Leadership

Sarah Covert
Program Associate
Health and Safety/Girls, Young
Women and Leadership

Desirée Flores
Program Officer
Health and Safety

Yma Gordon
Program Officer
Economic Development

Purva Panday
Project Administrator

Bharathi Sethumadhavan
Grants Administrator

Mia White
Program Officer
Democracy and Power

FINANCE AND OPERATIONS

Evelyn Mendez
Vice President and
Chief Financial Officer

Donald Berman
Mailroom Clerk

Pilar Bernabe
Accounting Manager

Ana Lin
Senior Accountant

Marlene Martínez
Junior Accountant

Stacy Young
Front Desk Assistant

Founding Mothers and Board of Directors



MSF Board of Directors with Ms. Foundation President & CEO Sara K. Gould and Founder Gloria Steinem. Missing from photo: Anne Delaney, Phoebe Eng, Donald McPherson and Wenda Weekes Moore.

FOUNDING MOTHERS

Patricia T. Carbine
Ms. Foundation for Education
and Communication, Inc.

Letty Cottin Pogrebin
Author

Gloria Steinem
Author

Marlo Thomas
Actress and Producer

Marie C. Wilson
Honorary Founder and
President Emerita

BOARD OF DIRECTORS

Katherine Marsh Grover,
Chair

Elizabeth Sawi, Vice Chair
Executive Vice President (retired)
Charles Schwab & Co., Inc.

Rob McKay, Treasurer
President
McKay Foundation

Lindsay D. Shea, Secretary
Trustee, Three Bridge Trust Youth
Justice Funding Collaborative

Judy Belk
Vice President and Senior
Philanthropy Advisor
Rockefeller Philanthropy Advisors

Michael J. Campbell
President and CEO
Dominick & Dominick LLC

Anne Delaney
Founder
Starry Night Fund
of the Tides Foundation

Phoebe Eng
Creative Director and Co-Founder
The Opportunity Agenda

Donald McPherson
Executive Director
Sports Leadership Institute,
Adelphi University

Sara E. Meléndez
Professor of Nonprofit
Management (retired)
George Washington University

Wenda Weekes Moore
Board of Trustees
W.K. Kellogg Foundation

Kathleen Stephansen
Director of Global Economics
Credit Suisse Securities LLC

Dorothy Q. Thomas
Independent Consultant

Our Mission

The Ms. Foundation supports the efforts of women and girls to govern their own lives and influence the world around them. Through its leadership, expertise and financial support, the Foundation champions an equitable society by effecting change in public consciousness, law, philanthropy and social policy.

Our Beliefs and Values

The Foundation's work is guided by our vision of a just and safe world where power and possibility are not limited by gender race, class, sexual orientation, disability or age. The Foundation believes that equity and inclusion are the cornerstones of a true democracy in which the worth and dignity of every person are valued.

CONCEPT/DESIGN: SIVA DESIGN, NY/SIVADESIGN.COM ILLUSTRATION: JANET ATKINSON/IMAGES.COM WRITING: BROUGHTON STRATEGIES, BROUGHTONSTRATEGIES.COM



Ms. Foundation for Women

Ms. Foundation for Women
120 Wall Street, 33rd Floor
New York, NY 10005

P: (212) 742-2300 F: (212) 742-1653
www.ms.foundation.org