



Chicago Foundation for
women



Working at the Intersections

2011 Annual Report



THIS PAST YEAR...

We made
106 grants.

We hosted 53
public programs,
workshops and
fundraisers.

We sent
9,841 people
our email
newsletter
every month.

We engaged
397
volunteers.

WE WORKED HARD BECAUSE...

**2/3 OF POOR CHICAGO FAMILIES WERE
SINGLE WOMEN WITH CHILDREN**

**4 OUT OF 5 SEXUAL ASSAULTS WERE
COMMITTED BY SOMEONE THE VICTIM KNOWS**

**70% OF ILLINOIS WOMEN LIVING WITH
HIV/AIDS WERE AFRICAN AMERICAN**

That's why we will continue to **work at the intersections**
of women and girls' health, safety and security.

OUR MISSION

Chicago Foundation for Women is a grantmaking organization dedicated to increasing resources and opportunities for women and girls in the greater Chicago area. To support our philanthropy, the Foundation promotes increased investment in women and girls, raises awareness about their issues and potential, and develops them as leaders and philanthropists.

OUR VISION

Chicago Foundation for Women envisions a community and world in which all women and girls have the opportunity to achieve their full potential and live in safe, just, and healthy communities.

ON THE COVER

Top left: Grantees including Between Friends, Rape Victim Advocates and Chicago Alliance Against Sexual Exploitation distributed fans at the 2011 Pitchfork Music Festival in Chicago. The fans, which say "Cool It! Don't Be a Fan of Violence" and list anti-violence resources, helped create a dialogue about misogynistic lyrics by one of the featured acts, Odd Future.

Top right: With the help of grantee Chicago Public Art Group, a volunteer creates a mosaic tile for a mural honoring Jane Addams in Streeterville.

Bottom left: A Varsity Squad member of grantee Girls in the Game assists a youth participant at the annual Girls' Summit.

Bottom right: Tania Unzueta Carrasco (center), co-founder of grantee the Immigrant Youth Justice League, with friends at the 2011 Impact Awards, which honored her and nine additional Chicago-area leaders whose work has a global impact on women and girls.



Chicago Foundation for women

November 2011

Dear Friends,

Since 1985 Chicago Foundation for Women has improved the lives of millions of women and girls by supporting programs that serve their needs, advocating policies that serve their interests, and engaging women as philanthropists, leaders and decision makers.

To date, we have given nearly \$19 million through almost 3,000 grants, and we must continue to do this work—and much more—given today's harsh economic realities. Joblessness and financial insecurity affect women and girls profoundly, and CFW won't shy away from the complexity of women's lives. We support programs that tackle many issues simultaneously. **We work at the intersections of women's lives.**

We acknowledge demographics like age, race and income but we also focus on women's lived experiences: the barriers presented by domestic violence, homelessness and lack of health care, as well as the lessons gained through motherhood, immigration and education.

To ensure girls' future economic security, for example, we must examine **the intersection of education and gender-based violence**. When schools take dating violence, sexual assault and bullying seriously, they create safer classrooms where students can succeed.

Women at **the intersection of motherhood and incarceration** deserve community-based sentences instead of jail time for minor offenses. This way, we can keep families whole and stop the generational cycle of poverty.

Communities of color live at the **intersection of racial inequality and reproductive justice**, bearing the brunt of laws and policies restricting reproductive freedoms. To turn the tide we must invest in grassroots advocacy led by women of color, whose policy work is transforming the political landscape locally and nationally.

Chicago Foundation for Women will stand strong at these intersections—and many, many more—thanks to the generosity and dedication of thousands of donors who share our vision: a world in which all women and girls have the opportunity to achieve their full potential.

Thank you for your support.



Andrea Kramer

Andrea S. Kramer
Board Chair



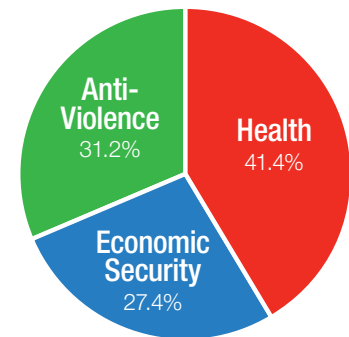
K. Sujata

K. Sujata
President/CEO

2011 Grants and Support

This fiscal year, we awarded more than \$850,000 through 106 grants and other support, bringing our historical total to more than 2,900 grants totaling nearly \$19 million.

Chicago Foundation for Women supports emerging and established nonprofit organizations throughout metropolitan Chicago and, through our donor advised funds, nationwide. Our funding focuses on three strategies to improve women's and girls' lives: expanding economic security, ensuring freedom from violence, and enhancing access to health services and information.



2011 GRANTS BY ISSUE AREA

GRANTS AWARDED, FALL 2010 AND SPRING 2011

Access Living of Metropolitan Chicago: \$15,000

The Sophia Fund for Advocacy and General Fund: The Empowered FeFes (ages 16-24) and the DIVAs (ages 25-40) are peer-support groups by and for women with disabilities, addressing self-esteem, body image, reproductive health, violence and other issues identified by participants.

Apna Ghar: \$20,000

General Fund: Apna Ghar (Our Home) provides culturally appropriate, multi-lingual services, including emergency shelter, to

survivors of domestic violence with a primary focus on the South Asian and other immigrant communities.

Arab American Action Network: \$20,000

General Fund: The Arab Women's Committee empowers women in Chicago's Arab community. Bridging cultural and generational gaps, its members engage in community organizing, leadership development and social networking in a safe space.

Beyondmedia Education: \$15,000

General Fund: In collaboration with The Dreamcatcher Foundation, the Girls!Action!Media! program works with

underserved and underrepresented women, girls and LGBTQ youth to tell their stories and organize for social justice through the creation and distribution of media arts.

Black Women for Reproductive Justice: \$35,000

Catalyst Fund: BWRJ trains and mobilizes a grassroots constituency of Black women in Illinois to carry out strategic advocacy and reproductive justice initiatives, both locally and nationally.

Centro Romero: \$15,000

General Fund: The Domestic Violence Project serves Latina survivors in the refugee immigrant population on Chicago's northeast side, offering individual counseling, support groups, court advocacy, case management services, and training on finances and job skills.

Chicago Abortion Fund: \$35,000

Catalyst Fund: The My Voice, My Choice Leadership Group engages and mobilizes the women CAF serves. By facilitating leadership development of the most marginalized women, CAF involves women of color in grassroots organizing to improve community systems.

Chicago Alliance Against Sexual Exploitation: \$20,000

The Sophia Fund for Advocacy: End Demand, Illinois is a grassroots campaign advocating that the most effective way to reduce violence against women and eliminate the sexual exploitation of prostituted and trafficked people is to address its root cause: the demand for the sex trade.

Coya Paz (left) and Marta Coronado, board members of grantee Amigas Latinas, at a Chicago rally for the DREAM Act.





FUNDS

THE SOPHIA FUND FOR ADVOCACY

From 1983 to 1991, The Sophia Fund was an independent foundation. It made more than 400 grants totaling \$1.8 million to organizations addressing reproductive rights, violence against women and economic justice. In 1992, Sophia's founder turned over part of the fund's work to Chicago Foundation for Women to continue its support of advocacy and social policy efforts to allow women and girls to live to their full potential.

THE GENERAL FUND AND THE IRENE BAYRACH ANTI-VIOLENCE LEGACY FUND

General Fund grants focus on Chicago Foundation for Women's three key issue areas: economic security, freedom from violence, and access to health services and information for women and girls. The Bayrach Fund, thanks to a donation from the estate of Irene Bayrach, supports services and advocacy projects that address family violence in all its

forms: domestic violence between partners in an intimate relationship, girls' exposure to violence at home, child abuse and elder women abuse.

CATALYST FUND: RESOURCES FOR WOMEN OF COLOR IN REPRODUCTIVE JUSTICE

Chicago Foundation for Women has always supported programs that improve women's access to health services and information. To build upon this work, for the third year in a row, CFW received a \$100,000 matching grant from the Catalyst Fund at Groundswell to support reproductive justice advocacy led by women of color. The reproductive justice movement addresses a full spectrum of issues that disproportionately affect communities of color, particularly in low-income neighborhoods, including the right to access reproductive health information and care; bear and parent children; access a safe and legal abortion; live free from violence; and live and work in a healthy environment.

DONOR ADVISED FUNDS

Donor advised funds can be established when a person or family donates \$5,000 or more to the fund. Chicago Foundation for Women assists the donor in awarding grants from that fund to support organizations helping women and girls.

LEADERSHIP COUNCIL FUNDS

Through our five Leadership Councils, Chicago Foundation for Women fosters a network of diverse leaders who raise funds for their communities. Each council's fund awarded grants this past year to organizations which work in the communities they represent.

CHAUNCEY AND MARION D. MCCORMICK FAMILY FOUNDATION HEALTH SERIES

Since January 2009, the Chauncey and Marion D. McCormick Family Foundation has provided funding to Chicago Foundation for Women to host events focused on the health needs and disparities of women of color.

Chicago Legal Advocacy for Incarcerated Mothers: \$25,000

Catalyst Fund: The Visible Voices program empowers formerly incarcerated women to support policy change, such as strengthening laws that prohibit the shackling of incarcerated women while pregnant or in labor.

Chicago Public Art Group: \$50,000

25th Anniversary Murals Fund: To transform and enhance the lives of Chicago residents, promote community engagement and mark Chicago Foundation for Women's 25th anniversary, CPAG designed and installed three murals celebrating the achievements and potential of women and girls.

Chicago Women's Health Center, Inc.: \$15,000

General Fund: Women and transgender people receive gynecological care, alternative insemination, health education,

acupuncture and counseling services in a respectful environment. The center also engages in community outreach and education on women's health in diverse communities.

Community Organizing and Family Issues: \$20,000

The Sophia Fund for Advocacy and The Berta Waese Endowed Fund: Parents Organized to Win, Educate and Renew—Policy Action Council (POWER-PAC), COFI's cross-neighborhood leadership group of grassroots women, addresses the root causes of family poverty and strengthens economic security for low-income women and their children.

Deborah's Place: \$15,000

General Fund: Teresa's Interim Housing: Breaking the Cycle of Homelessness for Women uses a continuum of housing options and comprehensive support

services to help women find permanent housing.

Illinois Caucus for Adolescent Health: \$25,000

Catalyst Fund: ICAH is a youth-led group that advocates for sound policies and practices that promote a positive approach to adolescent sexual health and parenting.

Illinois Maternal & Child Health Coalition: \$30,000

Catalyst Fund: The Englewood Women's Empowerment Project seeks to create accessible healthcare resources and services for women and girls in Englewood as well as engage them in reproductive justice advocacy.

Illinois Safe Schools Alliance: \$15,000

General Fund: The Alliance promotes the safety, support and healthy development of lesbian, gay, bisexual and transgender youth

2011 GRANTS AND SUPPORT (CONTINUED)

in Illinois schools and communities through advocacy, education, youth organizing and research—in particular anti-bullying work.

Korean American Community Services: \$15,000

The Irene Bayrach Anti-Violence Legacy Fund: The Domestic Violence Prevention and Family Support Program provides survivors with crisis intervention, emergency assistance and skill-building, and it also works to prevent abuse within Latino and Korean American immigrant communities.

Korean American Women in Need: \$20,000

General Fund: The Bilingual Domestic Violence Services program responds to the needs of Chicago-area Korean and Asian American women and children experiencing domestic violence by offering comprehensive services and engaging in organizing, community outreach and education.

Midwest Access Project: \$15,000

General Fund: Midwest Access Project seeks to expand women's access to a full range of reproductive health services by training health care providers on abortion care, working to expand the network of trainers across the Midwest and educating the health care community and the general public.

Mujeres Latinas en Acción: \$20,000

The Sophia Fund for Advocacy and General Fund: Mujeres Latinas stands as one of the oldest and largest organizations administered by, working with and on behalf of Latinas. It engages in advocacy and provides culturally sensitive services in the areas of domestic violence, sexual assault, parent support, homelessness prevention, economic security, youth-crisis intervention and Latina leadership.

Project Exploration: \$20,000

General Fund and The Berta Waese Endowed Fund: Services for Girls are science education programs designed specifically for girls. They merge research-based best practices for both youth development and science education into a model that engages girls and builds their capacity to pursue careers in science.

Rape Victim Advocates: \$15,000

The Sophia Fund for Advocacy and General Fund: Rape Victim Advocates provides non-judgmental crisis intervention counseling, individual and group counseling,

medical and legal advocacy, and public education and institutional advocacy on sexual violence.

Restaurant Opportunities Center of Chicago: \$15,000

The Sophia Fund for Advocacy and General Fund: The Women's Committee helps single mothers and undocumented female workers in the restaurant industry advance to living-wage jobs. It also addresses sexual harassment and gender discrimination through research, organizing and education.

Roger Baldwin Foundation of the ACLU, Inc.: \$22,500

The Sophia Fund for Advocacy and the Eleanor Petersen Legacy Fund: The Reproductive Rights Project defends and advances the rights of all women to decide freely, without government interference, whether and when to bear a child.

Sarah's Inn: \$15,000

The Irene Bayrach Anti-Violence Legacy Fund and General Fund: The Supportive Services program provides comprehensive domestic violence services, in English and Spanish, to women in the western suburbs of Chicago. The services are also offered at a new satellite location to reach Latina immigrant survivors.

Sargent Shriver National Center on Poverty Law: \$22,500

The Sophia Fund for Advocacy and the Eleanor Petersen Legacy Fund: The Women's Law and Policy Project creates and advocates for public policies that advance economic justice and personal security for women and girls, particularly those living in poverty in Illinois.

Young Women's Empowerment Project: \$25,000

Catalyst Fund: YWEP responds to the strengths, needs and concerns of young women in the sex trade by building their

self-care skills and engaging them in advocacy to change the institutions that affect their lives.

Youth Job Center of Evanston: \$17,000

General Fund and The Berta Waese Endowed Fund: The Women Invested in Learning and Livelihoods program provides job training and placement for women ages 18-25, mostly single mothers, who are trapped in 'working poor' jobs without the means or support to advance to economic self-sufficiency.

LEADERSHIP COUNCIL FUNDS

Lavender Fund of the Lesbian Leadership Council

Affinity Community Services: \$5,000

In fall 2011 Affinity Community Services, Amigas Latinas and Black Women for Reproductive Justice will share a new home on Chicago's South Side to address a lack of institutions and resources there, especially for lesbian, bisexual, transgender, queer, trans, gender non-confirming and genderqueer people.

Chicago Books to Women in Prison: \$3,030

This volunteer collective distributes books free of charge to women in prison nationwide, to offer women behind bars the opportunity for the self-empowerment, education and entertainment that reading provides. (Includes \$1,030 from the Polk Bros. Foundation Fund for Emerging Organizations)

Chicago Dyke March Collective: \$2,030

The collective is a grassroots mobilization and celebration of dyke, queer and transgender resilience that organizes the annual Chicago Dyke March, which in 2011 took place in the South Shore neighborhood. (Includes \$1,030 from the Polk Bros. Foundation Fund for Emerging Organizations)

"CFW funding helped us produce groundbreaking research on bankruptcy and its disproportionate impact on African American women."

DORY RAND, WOODSTOCK INSTITUTE



Working at the Intersections of... Science and Girls' Leadership

Each year CFW grantee **Project Exploration** takes girls, mostly African American and Latina, on a summer field trip to study geology, chemistry and biology in Yellowstone National Park. The high school girls who go on the All Girls Expedition might track collared coyotes and study geysers, but that's only part of the trip's purpose. Another is leadership development.

As with all its programming, Project Exploration doesn't choose girls who are already high achievers—they look for girls who just need an opportunity to fulfill their potential.

Constance Robinson, a 2011 Woodlawn Secondary School graduate, went on her second expedition this summer and took on the responsibility of team leader.

"I had to mentor the other girls who were coming in, with different backgrounds," Constance said. "Once you show you have confidence people are drawn to you. If a team leader isn't really out there, then the group won't be, so you have to be confident for your group."

The All Girls Expedition divides into groups to study topics of their choice, first for a week in the classroom and then for a week on-site in Wyoming. Constance's focus was geology, and she hopes to build that into her pre-med coursework at Penn State this fall.

More than 60% of Project Exploration participants choose college majors in science, but that's not the only goal, explained PE co-founder and executive director **Gabrielle Lyon**. "For students who are really disenfranchised because of the educational system, there's an incredibly important equity issue around not having the ability to develop the skills they need. Science gives girls fluency with analysis, with evidence. It can broaden their horizons."

Poignantly, Constance's favorite memory of the All Girls Expedition was literally the horizon. "Growing up in Chicago you don't get to see the stars," Constance said. "One night in Yellowstone, we gazed at the sky. We saw part of the Milky Way and shooting stars, and I was in awe."



Above: Constance Robinson (left) and University of Chicago biologist Heather King examine the vertebrae of an elk found on a wildlife hike during grantee Project Exploration's All Girls Expedition to Yellowstone National Park.

Inset: Attendees of Project Exploration's Girls' Health and Science Day receive accurate information on bodies, relationships, self-defense and sexuality.

2011 GRANTS AND SUPPORT (CONTINUED)

Chicago Women's Health Center, Inc.: \$4,000

The Trans Inclusion Program is committed to breaking down assumptions about gender and sex and offering affordable, respectful and accessible health care and education to the Chicago and vicinity trans communities.

Links – Northshore Youth Health Service: \$3,000

Sappho's Sisters provides a safe and confidential space for lesbian and bisexual young women in the north and northwest suburbs of Chicago. The program helps participants develop a positive sense of self and develop leadership and communication skills.

Maria Mangual Unidas Fund of the Latina Leadership Council

Latinos Progresando: \$5,000

The Violence Against Women Act (VAWA) Project provides immigrant victims of domestic abuse access to the public and legal benefits of VAWA so they can remain in the U.S. apart from abusive spouses who may control their immigrant status.

Telpochcalli Community Education Project: \$3,000

The Women's Cooperative (Servicios Hogarena) supports Latina women from the community to develop their own microenterprises, thus gaining economic independence.

WINGS Program Inc.: \$2,000

Suburban Latina Outreach provides individual mentoring to disadvantaged Latina women and raises awareness about domestic violence within the Latino community in Chicago's north and northwest suburbs.

Silk Fund of the Asian American Leadership Council

Arab American Family Services: \$5,000

The Domestic Violence Prevention and Intervention program serves Arab and Muslim women who are survivors of domestic violence and trains other service providers on best practices in working with Arab and Muslim women.

Chinese Mutual Aid Association: \$2,500

The Young Women Warriors program helps young Asian American women ages 12 to 19 develop leadership skills through peer group meetings and adult mentorship.



An intern at grantee Bright Endeavors carefully pours soy candles.

National Asian American Pacific Women Forum – Chicago Chapter: \$2,500

The forum will create a Community Reproductive Needs Assessment of Asian and Pacific Islander Women and Girls in Chicago, based on surveys of local organizations that provide reproductive justice services to the community.

Sojourner Fund of the African American Leadership Council

Primo Center for Women and Children: \$5,000

The center provides transitional housing, counseling and support services to homeless women and their children; supports mothers in their education and training efforts to find and retain employment; offers computer and GED classes; and operates a food pantry for the West Garfield Park neighborhood.

Women's Treatment Center: \$5,000

The center provides comprehensive treatment to chemically dependent women and their children in the Chicago area. It

houses five residential programs, outpatient treatment, medically supervised detoxification, on-site health care, daycare, nursery and pre-kindergarten care.

Young Women's Leadership Fund of the Young Women's Leadership Council

Girls Rock! Chicago: \$6,034.95

The Girls' Summer Camp motivates girls ages 8 through 16 through instrument instruction, music composition coaching, recording workshops, song-writing workshops, hands-on activities, technical equipment workshops, guest speakers, team-building activities and band performances. (Includes \$1,034.95 from the Polk Bros. Foundation Fund for Emerging Organizations)

Global Girls, Inc.: \$5,000

The Talk to Me Performance and Workshop Series are peer-led mother-daughter workshops that help facilitate open and informed discussions about sex, including a presentation on STIs and HIV as well as community resources.

STRATEGIC RESPONSE FUND

Black Women for Reproductive Justice: \$1,500

Chicago Area Women's History Council: \$5,000

Chicago Metropolitan Battered Women's Network: \$1,000

Ellen Stone Belic Institute for the Study of Women and Gender in the Arts and Media: \$5,000

Interfaith Worker Justice: \$500

Mujeres Latinas en Acción: \$2,500

Neighborhood Writing Alliance: \$3,000

Women & Girls Collective Action Network: \$5,075

Women's Issues Midlife & Beyond: \$1,000

POLK BROS. FOUNDATION FUNDS

Polk Bros. Foundation Fund for Emerging Organizations

Chicago Books to Women in Prison: \$1,030

Chicago Dyke March Collective: \$1,030

Gender JUST: \$5,000

Girls Rock! Chicago: \$1,034.95

POW-WOW, Inc.: \$2,500

Polk Bros. Foundation Capacity Building Scholarships

Black Women for Reproductive Justice: \$1,000

HEART Women & Girls Project: \$450

Illinois Caucus for Adolescent Health: \$650

Jane Addams Senior Caucus: \$1,950

Literature for All of Us: \$1,300

Metropolitan Chicago Breast Cancer Task Force: \$1,500

New Moms: \$500

Project Exploration: \$1,500

The Voices and Faces Project: \$750

CHAUNCEY AND MARION D. MCCORMICK FAMILY FOUNDATION HEALTH SERIES

Metropolitan Chicago Breast Cancer Task Force: \$5,000

"Screening Saves Lives!" Campaign Kickoff

National Immigrant Justice Center: \$2,500

"Barred from Access" Presentation and Panel Discussion

POW-WOW, Inc.: \$2,500

"Keeping It Real About STIs and HIV" Performance and Town Hall

WOMEN'S ECONOMIC SECURITY CAMPAIGN

Illinois Action for Children: \$5,000

Local launch of the WESC Child Care Brief

DONOR ADVISED FUNDS

The Berta Waese Endowed Fund

Community Organizing and Family Issues

Citywide Public Policy Leadership & Advocacy Project

Project Exploration

Services for Girls

Youth Job Center of Evanston

WILL (Women Invested in Learning and Livelihoods)

Eleanor Petersen Legacy Fund

Roger Baldwin Foundation of the ACLU, Inc.

Reproductive Rights Project

Sargent Shriver National Center on Poverty Law

Women's Law & Policy Project

Fay Clayton Donor Advised Fund

Black Women for Reproductive Justice

General Operating Support

Center on Halsted

General Operating Support

Chicago Abortion Fund

General Operating Support

Human Rights Watch

Defending Women's Rights Worldwide

Lambda Legal Defense and Education Fund, Inc.

General Operating Support

Mujeres Latinas en Acción

General Operating Support

NARAL Pro-Choice America Foundation

General Operating Support

NOW Foundation

General Operating Support

Planned Parenthood of Illinois

General Operating Support

Roger Baldwin Foundation of the ACLU, Inc.

Reproductive Rights Project

Women Employed Institute

General Operating Support

Women's Media Group

General Operating Support

Jo and Art Moore Family Donor Advised Fund

Literature for All of Us

General Operating Support

National Immigrant Justice Center

Counter-Trafficking Project

Sargent Shriver National Center on Poverty Law

Women's Law & Policy Project

Nancy M. Goodman Donor Advised Fund

Center on Halsted

General Operating Support, SAGE Women's Programming

Chicago Academy for the Arts

The Nancy Goodman Fund

CommunityHealth

General Operating Support, Well Women's Health Initiative

Lawyers' Committee for Better Housing

General Operating Support

Roslyn Fund for the Arts

The Dinner Party Project in Chicago

General Operating Support

Women's Self Worth Foundation (Donor Designated Fund)

ACCIÓN Chicago

Loans to Women in Chicago

"CFW allows us flexibility and provides technical assistance to help us do our work better."

JANINE H. LEWIS,
ILLINOIS MATERNAL AND
CHILD HEALTH COALITION

2011 Donors

Thank you to our 2011 donors for your generous support. It is thanks to contributions and grants made by individuals, corporations and foundations that Chicago Foundation for Women continues to improve the lives of women and girls throughout the Chicago area.

The following is a list of our donors from July 1, 2010 through June 30, 2011.

INDIVIDUAL DONORS

\$100,000+

Lucia Woods Lindley

\$20,000–\$99,999

Anonymous
Fay Clayton and
Lowell Sachnoff
Ginny Holt
D. Clifford Jensen
Nancy Juda and Jens Brasch
Gail and Harry Ludewig
Anita and Prabhakant Sinha

\$10,000–\$19,999

Marjorie Craig Benton
Conant Family Foundation
Mary Winton Green
Elizabeth S. Guenzel
Marcena W. and Norris Love
Susan E. Morrison
Debra Pizer
Janice E. Rodgers
Edna J. Schade
Anita K. Sinha
Laura A. Tucker

\$5,000–\$9,999

Jean Allard
Virginia T. Bartholomay
Queta Rodriguez Bauer
Ellen Benjamin and
Frederick Bates
Carol Lavin Bernick
Pamela Crutchfield
James and Brenda Grusecki
Susan S. Hassan
Millicent Holmes
Carol and Ed Kaplan
Kate and Michael Kennedy
Andrea S. Kramer
Patricia and Robert Moore
H. Gael Neeson
Grace Allen Newton and
David Weinberg
Carol Prins and John Hart/
The Jessica Fund

Barbara Rose and Neil Peck
Ellen A. Rosen
Leora and Mort Rosen
Sandra K. Rusnak
Margot Levin Schiff and
Harold Schiff
Carleen Schreder and
Ralph Musicant
Gabrielle Sigel
Donna M. and Thomas H. Stone
Sharmila Rao Thakkar
Aylice M. Toohey and
Eric Gorman
Gail Waller and
Timothy Schwertfeger
Wendy K. White Eagle/Native
Capital Investment, Inc.
Paula Wolff
Frances K. Zemans

\$2,500–\$4,999

Anonymous
Lucy and Peter Ascoli
Maria Bechily and Scott Hodes
Prudence and Francis Beidler
Kemery Bloom
Catherine and Addison Braendel
Marge and Lew Collens
Judy and Bill Cottle
Peg Duncan
Isa Ellis

Sondra Berman Epstein and
Sidney Epstein
Nancy Gidwitz
Marjorie Halperin
Irene M. Holmen
Barbara Levy Kipper
Frances H. Krasnow
Robert Lifton and
Carol Rosofsky
Krista K. Linn
Nina and Philip Martin
Dana M. Mikstay
Mary Morse and Jim McBride
Abby O'Neil and Carroll Joynes
Eva Janzen Powell and
Smith T. Powell IV
Margot L. Pritzker
Eleanor Revelle
Nicole R. Robinson
Nancy A. Ross
Esther S. Saks
Bettylu and Paul Saltzman
Barbara Stewart
Elizabeth Beidler Tisdahl
Mary L. Winburn
Miriam E. Wirt

\$1,000–\$2,499

Anonymous (4)
Jeannie Affelder
Susan Alberts

Bobbi Allen
Tianne Bataille
Ellen Stone Belic
Ellen Benninghoven
Jacqueline Quern Berry
Matt Bowen
Barbara Burrell
Evette Cardona and
Mona Noriega
Michelle S. Carr
David S. Chernoff
Marilyn T. Cohen
Lynn G. Cutler
Ruth Dunbar Davee
Barbara Engel and Jesse Hall
Merri Ex
Edith H. Falk
Sunny and Paul Fischer
Jean and James Foley
Elizabeth R. Foster
Jennifer Franklin
Susan and Paul Freehling
Meredith Conant George
Rita M. Glass, Ed.D.
Susan Goldschmidt
Marlene Gonzalez
Sapna Gupta
Mrs. Charles Haffner
Catherine Head and
Joe Ferguson
Susan Davis Heisler and
George Heisler

"We've shown that women
and girls are the best investment
anyone can make."

FAY CLAYTON, ALUMNAE COUNCIL MEMBER

2011 DONORS (CONTINUED)

INDIVIDUAL DONORS \$1,000–\$2,499

Sarai Hoffman
Mae P. Hong
Kristine Johnson
Loretta and Allan Kaplan
Rachel Kaplan and
Robert Riesman
Barbara and Kenneth Kaufman
Greg and Lynda Kolb
Sally Meyers Kovler and
Jon Kovler
Rachel E. Kraft
Roberta and Sam Kramer
Ngoan Thi Le
Barbara Macnider
Rocco and Roxanne Martino
Sara and Richard Mesirow
Lois Mills
Jo and Art Moore
Clare Muñana
Suzanne Musikantow
Sally Myers
Kate O'Malley/K.O.
Strategies LLC
Sara Paretsky
Jamie Phillippe
Jean Pogge
Gaye E. Preston
Kim Redding and
Missy Lavender
Kathleen Roseborough and
Al Lipton

Susie and Jeff Rubenstein
Carrie Ruzicka
Shirley and Patrick Ryan
Louise and Charles Saltzman
Linda Saranow
Andrew Solomon
Nancy Spore
Orli and Bill Staley
Ronna Stamm and
Paul Lehman
Fredric and Nikki Will Stein
Judith Becker Thomas
Margaret and Joseph Tilson
Chad and Heidi Tischer
Cindy Vogl
Patty Walsh
Vanessa J. Weathersby
Blair Wellensiek
Iris S. Witkowsky
Carol S. Wyant

\$500–\$999

Anonymous (2)
Gemma Allen
L. Ann Allison
David A. Ansell
Shelley Aron
Joan Truehart Bacon
Denise M. Baranowski, CTFA
Donna and Bill Barrows



In May 2011, CFW's Latina Leadership Council hosted a community conversation called *Mujeres del Cambio – Women of Change* featuring local Latina luminaries (left to right) Evette Cardona, Tanya Saracho, Marlene Gonzalez, Melba Lara and Olga Camargo.

Ruth K. Belzer
Kay Berkson
Susan Berman
Trina Bockus
Kay and Matthew Bucksbaum
Rebecca Cacayuran
Renée Caputo
Velaine V. Carnall
C.C. Carter
Kathleen Cheevers
Judy M. Chernick
Christina W. Chodos
Bernadette Chopra
Nancy L. Clark
Sherry Clayton
Eileen Clune
Gwen Gilbert Cohen
Ann Collins
Dolores Connolly
Barbara Flynn Currie
Michaela D'Arrigo
Trudy Davis
Sandra Desautels
Elizabeth Dietel
April Donnellan
Terri Drews and Ed Getz
Kimberly Duchossois
Meghan Duffy
Eliza and Timothy Earle

Sarah Heisler Eberhard
Harlene Ellin
Deborah Epstein
Terry Satinover Fagen
Sharon Feigon
Ellen and Matt Feldman
Sylvia Fergus
Fern and Sanford Finkel
Roselyn A. Ford
Susan and Sy Frolichstein
Lynn Gentleman
Kanwal Ghaey
Elizabeth L. Gracie
Lizzie Graham
Vesna Grbovic
Lora-Lee Hall
Janet and Michael Hanley
Tina E. Harlan
Harriet Hausman
Mary P. Hines
Debra Hoegemeyer
Kaethe Morris Hoffer
Caroline T. Huebner
Karen J. Hunt
Nicole R. Ingram
Lorraine and Jay Jaffe
Shirley H. Jaffee
Lynn Kamenitsa
Shara Kaplan

Ellen Kelleher
Sheila Berner Kennedy
Barbara Kessler
Helen J. Kessler
Nancy Kotler
Vivian and Loren Kramer
Paula Jill Krasny
Patricia Locke
Lori Lynch
Vida and Daniel Marks
Susan K. Marr
Karen May
Rosemary C. McDonnell
Christine Montenegro McGrath
Judith Hahn Meguire
Sheila M. Merry
Elaine Millsap-Parker
Judith E. Mitchell
Mary F. Morten
Michael Nameche
Suzu Neithercut
Dawn Clark Netsch
Wendy Pashman
Louise C. Pauly
Susan and Richard Petersen
Sylvia Pozarnsky and Tom Riley
Cheryl I. Procter-Rogers
Deborah L. Puntenney, Ph.D.
Anna M. Rappaport



Working at the Intersections of... **Friendship and Fundraising**

Above: Ginny Holt (center) welcomed more than 150 people to her home to hear about CFW's impact in the community. Grantee speakers were Keisha Farmer-Smith (left) of Alternatives, Inc. and Karen Singer (right) of YWCA Evanston/North Shore.

Inset: CFW board member Laura A. Tucker (right) greets Nancy Glick at Ginny Holt's house party. Laura hosted a north suburban house party for CFW the year before, in December 2009.

Ginny Holt, a longtime supporter of Chicago Foundation for Women, knew that many of her friends would be interested to learn about how CFW's grants help women and girls in suburban communities as well as in Chicago. That's why she hosted an intimate, high-energy party in December 2010 at her Kenilworth home.

"Asking for donations is difficult, especially the traditional one-on-one approach," Ginny said. "Hosting a party brings people together and helps everyone recognize that we're a community that can pool our resources to improve women's lives, and that's powerful."

That's why *Crain's Chicago Business* ran an article about Ginny's fundraiser and other creative tools that nonprofits are using to raise money in a difficult economic climate. In fact, including three additional events in the Loop, Hyde Park and Oak Park, the house parties raised more than \$50,000 last year.

Hosting house parties to raise funds isn't a new idea, but it's effective when done well, CFW President/CEO **K. Sujata** explains. "A recent study shows that women are the most generous with their money at nearly every income level, yet they rarely recognize themselves as philanthropists. Women are still the best champions for the issues that affect their lives, and those are the issues that CFW addresses."

Ginny continued, "Once you hear first-hand the stories of women and girls overcoming adversity, whether it's in Chicago or the suburbs, people can really see the difference their dollars can make. This is what makes philanthropy inspiring and empowering."

One grantee that shared its story was **Alternatives, Inc.**, whose Girl-Driven Research Project lets teen girls in Uptown research a social justice topic of their choice. It includes a philanthropic aspect: the teens get to choose local nonprofits that address the issue they're studying—recently, the negative depictions of youth of color in mainstream media—to receive small grants.

As Ginny said to her friends and neighbors, "These girls think big and envision a better world, and that's something I feel good about supporting."

2011 DONORS (CONTINUED)

INDIVIDUAL DONORS \$500-\$999

Marjorie L. Reed
Beth and Gabriel Rodriguez
Melba Rodriguez
Jill and Ron Rohde
Sheli Z. Rosenberg
Ruth M. Rothstein
Peg and Courtney Rowe
Carol Rubin
Heidi Rudolph
Joan H. and Robert R. Rudolph
Jane M. Saks
Carol Schroeder
Susan H. and
Charles P. Schwartz, Jr.
Douglas C. Scovil
Smita N. Shah
Aparna Sharma
Mary Simon
Unmi Song and Terry Whalen
Kathryn D. Sowle
Mr. and Mrs. James Spiotto
Margie and Bill Staples
Heather A. Steans
Paul A. Svoboda
Beth Tabak
Rona Talcott
Anne Coulter Tobey
Adrienne Troy-Hamilton
Linda Wagner and Janine Hoft
Lee-Lin Wang, MSW
Monica Weed
Barbara A. Weiner
Charles and Elizabeth Wheatley
Maria Whelan
Mary Wondolowski
Virginia Zagaja

\$250-\$499

Anonymous (4)
Amy Adams
Anu Aggarwal
Gaylon Alcaraz
Karen A. Allen
Peri Altan
Susan Altfeld
Anita Alvarez
Mary H. Anderson
Veronica I. Arreola and
Antonio Martinez Jr.
Doris and Larry Ashkin
Ozzie Badal
Mary Bahr/MAB Advertising
Katie and Wynn Bailey
Kaberi Banerjee-Murthy
Diana Beliard
Janice L. Benson
Patricia Berman
Kathleen Bickford Berzock
Lieselotte N. Betterman
Saundra Bishop
Virginia Bobins

Phyllis Bowen
Betsy Brill
Monique Brunson
Eileen Budde
Pamela A. Butler
Jean Butzen
Marion A. Cameron
Yolanda Cardenas
Betsy Carothers
Kath M. Carter
Jessica Chatman
Rebecca S. Chodes
Arianna Cisneros
Betty L. Cleeland
Christie Collins
Linda Corby
Regine Corrado
Ann Courter
Dr. Carroll Cradock
Deborah Danson
Anne and Scott Davis
Camille De Frank
Monique Brinson Demery
Lilliana DeSantiago-Cardenas
Jane S. Dewey
Nell Dickie
Regina B. Dickinson
Grace G. Dickler
Vicky DiProva
Josie Disterhoft
Laurinda Dodgen
Pat Doherty-Wildner
Sheila Dugan
Susan S. Duman
Joy DuPuis
Rachel Durchslag
Rachel Dvorken
Elissa Efroymsen
Karen Ehlers

Deborah W. Engle
Cody Engle
Phyllis Epstein
Roberta G. Evans
Pat G. Ewert
Susan Feibus
Kathy and Robert Fishman
Missy Fleming
Miriam and Bud Frankel
Adrienne and Bob Furniss
Janie Garcia
Maryellen Giger
Gail C. Ginsberg
Ethel and William Gofen
Joan Goldstein
Carol A. Gronlund
Joan and Guy Gunzberg
Venu Gupta
Elizabeth W. Halpern
Amy Halverson
Kathy Hanold

Caroline Harney
John F. Hartray, Jr.
Lois F. Hauselman
Janet W. Helman
Meg Herman
Julie Hesse
Susan Himmelfarb
Joyce and Rich Hirsch
Cindy Homan
Kimberly Hoopingarner
Pamela K. Hull
Kathleen and Jim Hurley
Cathy Jackson
Debra C. Jackson
Anne Jacobson and
Richard Kolsky
Shaquita M. Jarrett
Carol Johnson
Nancy W. Johnson
Paula R. Kahn
Gerri Kahnweiler

"I feel like I 'grew up' at CFW. It shaped so much of who I am and how I view the world."

MAE P. HONG, PAST BOARD CHAIR

The Women's Treatment Center, a grantee, breaks the cycle of addiction and mends the bonds of families by offering women the opportunity to bring their young children into residential treatment with them.



2011 DONORS (CONTINUED)

INDIVIDUAL DONORS \$250-\$499

Linda K. Kaplan
Megan Kashner
Dana Kelly
Miriam J. Kelm
Adrienne C. King
Beata Kirr
Carol and John Kloster
Tanya and Brad Knight
Robin Kornegay-Rougeau
Iris Krieg and James Hardy
Geeta Krishnamurthi
Sandhya Krishnan
Jill W. Landsberg
Kathryn Hart Lansing and
Robert Lansing

Avis LaVelle
Lisa Yun Lee
Lucy Lehman
Carolyn S. Levin
Rebekah Levin
Carole and Martin Levine
Sherry Liang
Juju Lien and Robert Cross
Ann L. Lindner
Katherine M. Lorenz
Allison Lowe-Fotos
Mary Ann Lukowicz
Anna Lunn
Suzanne J. Lynch
Meredith Mack
Judy MacLeod
Anne Mahoney
Katrina L. Malone
Susan and Philip Marineau
Anna Marks
Rachael Marusarz

Alicia K. Matthews
Suzanne McBride and
John O'Neill
Paula and Bill McMenamin
Patricia R. McMillen
Deborah Witter Mead
Swati Mehta
Barbara and Richard Melcher
Linda Garcia Merchant
Soo Ji Min
Melissa Mizel and
Michael Edwards/
Honeybee Foundation
Lauren E. Moltz
Virginia G. Monroe
Heather Moore
Kelly and Ted Moore
Jennifer Morehead
Mary Morrissette
Gail H. Morse
Maureen Mosh
Clio C. Mulryne
Anne Marie Murphy
Emily Koenig Neuberger and
Henry Neuberger
Crista E. Noel
Colleen O'Leary
Beth Pagnotta
Sheena Panoor and
Nikhil Trivedi
Susan Payne
Felicia Gerber Perlman
Irene S. Phelps
Elizabeth B. Phillips
Clare M. Pierce
Rhoda A. Pierce
Lauren Polite
Melba L. Poole
Elizabeth M. Postell
Lucia Boyden Prochnow
Lisa Radomski
Katherine Rahill
Dory Rand
Polly Rattner
Tim and Sarah Ratty
Sendhil Revuluri
Barbara Reynolds
Alison Rhoten
Christopher Richert
Marlene and Harold Richman
Amalia Rioja and Martin Castro
Miriam Roberts
Jean Hardy Robinson and
Bill Robinson
Victoria E. Rock
Eleanor K. Roemer
Audrey and Michael Rubinstein
Betsy Rubinstein
Mary Ann and Robert Savard
Parminder Sawhney
Denise Scherck
Cynthia S. Schilsky
Christopher C. Scovill
Mita D. Shah
Nancia M. Shawver
Suzanne L. Shier
Rose L. Shure

Lynn Siegel
Ada Skyles
Toni S. Smith
Mary Ellen Smyth
Ian Solomon
Judith E. Stein
Joanne Steinback
Laura Stempel
Judith Stockdale
Mary Stowell
Lauren Sugerma
Carolyn Tatar
Mary Taylor
Tina Tchen
Dolores Thibodeaux
Tracey Thomas
Kathy Tisdahl
Ms. Rhonda Tullis
Kerry Tulson
Joan Turk
Maria Finitzo
Damayanti Vasudevan
Liliana Velzaquez
Bryan Vrablik
Mr. and Mrs. Richard A. Waichler
Maggie Walker
Chris Ward
Elizabeth K. Ware
Patricia Watkins
Laurie Wettstead
Simone Wheeler
Lori Wittman
Steven Wohl
Tracey L. Wolfe
Chai Wolfman
Margarite Wypychowski
Cheryl Yakey
Angela and Martin Yorath
Lili Ann Zisook

\$100-\$249

Anonymous (2)
Shazia Abdullah
Thelma Stevenson Ablan
Rachel Abramson
Harriet Adelstein
Marcia K. Aduss
Neelum Aggarwal
Carla Michelle Agostinelli
Amie Alfe
Pamela Ambrose
Nancy E. Anderson
Robert S. Anderson
Stacy S. Anderson
Suzanne Armstrong
Jean Ashmore
Ann Ballard
Anita Banerji
Jane L. Barclay
Carol Ross Barney
Enid and Lewis Baron
Emily L. Barr and Scott Kane
Nataly Barrera
Molly Baskin
Jo Bauer and Hannah Gottschall
Shilpa Bavikatte
Kathy and Alan Bayert



The Legacy Circle is a special group of supporters who have made a commitment to Chicago Foundation for Women's vision by choosing to include the Foundation in their estate plans.

Anonymous (6)	Lois J. Lipton
The Estate of Irene Bayrach	Marcena W. Love
Ellen J. Benjamin and Frederick N. Bates	Norris "Mike" Love
Marjorie Craig Benton	Gail J. Ludewig
Fay Clayton	Jo and Art Moore
Marge and Lew Collens	Sally Myers
Jane S. Dewey	Beverly Nachtrieb
Edith H. Falk	Elizabeth B. Phillips
Sunny and Paul Fischer	The Estate of Sylvia M. Radow
Joan Goldstein	Hedy M. Ratner
Millicent and Thomas Holmes	Janice E. Rodgers
Nancy Juda	Barbara Rose
Polly B. Kawalek	Leora Rosen
Lucia Woods Lindley	The Estate of Miriam E. Wirt

List in formation

Laurie Beasley
 Diane Bednarczuk for Sophia
 Diane and Michael Beemer
 Anuradha Behari
 Judy Belk
 Jennifer Bell
 Kathy L. Berger
 Cynthia A. Bergmann and
 Anthony V. Stankevicius
 Mary Beth Berkoff
 Emily Berlinghof
 Joan and Julian Berman
 Monica Bhattacharya
 Margaret C. Bisberg
 Stella Carl Black
 Deanna Blair
 Angela Blaising
 Melinda and Benson Blake
 William J. Bleecker
 Lexis Blitstein
 Stacey Boeke
 Lorelei Joy Borland
 Deborah H. Bornstein
 John Bourman and
 Robin Schirmer
 Elizabeth Everett Brackett
 Dana Bradley
 Sue Brady
 Laura Bravo
 Ann Breen-Greco
 Belinda Bremner
 Nonie Brennan
 Terri Brieske
 Mary J. Brister
 Carole Brite
 Kathy L. Brock
 Matthew Brody
 Catherine Brown
 Consuella Brown

Deane B. Brown
 Deborah L. Brown
 Lyn Bruner
 Kathleen Buffington
 Amy Buonassisi
 Genevieve Burns
 Tom Bussler
 Veronica E.L. Byers
 Teresa Byrd
 Maggie and Barry Cain
 Sally Callander
 Wendy Calvert
 Monica P. Campbell
 Edith F. Canter
 Erika Carey
 Jessica Carrillo
 Ann S. Carton
 Tracy Carton
 Tracey Cascarano
 Shannon J. Cassell
 Elizabeth Cassidy

Norma G. Castrejon
 Perla J. Castro
 Gay-Young Cho
 Vicki Chou
 Sanjida Chowdhury
 Renee Citera
 Sally T. Clair
 Dee Clancy
 Princess Clark-Wendel
 Allison B. Clark
 Janice Clark
 Anna Clement
 Paula Cofresi-Silverstein
 Suzanne Cohan-Lange
 Andrea and
 Mitchell Cohen-Lewe
 Laurie Cohen
 Dr. Mardge H. Cohen
 Samantha Coleman
 Sandy Collins
 Joan E. Coogan

Tina Copeland
 Lindsay Corby
 Sophia Coronelli
 Cathleen Costello
 Suzanne Courtheoux
 Dan and Jayne Coyne
 Nancy Cunniff
 Lynne Cunningham
 Sara Curry
 Lori Darling
 Joy Daskal
 Fern Bomchill Davis
 Shelley A. Davis
 Nancy Day
 Helga de Bontin
 Carmen DeCarrier
 Thomas E. Deer
 Crister Delacruz
 Clare Kelly Delgado
 Nicole Dessain
 Amina J. Dickerson
 Anneke Diem and
 Natalie Moretz
 Emilia DiMenco
 Lisa Dinwiddie
 Mary Dolan and David Haracz
 Timafei Doliniak
 Arthur Don
 Lynn B. Donaldson
 Joyce L. Donaly
 Victoria Donati
 Helen Doria
 Jonathan S. Drage
 Mary Drish
 Shugin Du
 Dominique Dunigan
 Nora Dunlop
 Mirsada Durakovic
 Rochelle Dyme
 Carol Bernstein Eckstein
 Deborah and Jennifer Edidin
 Loraine E. Edwalds
 Angela R. Elbert
 Susan Eleuterio
 Lin Ellis
 Elizabeth A. Evans
 Elizabeth A. Fama
 Twinkie Fang
 Donald and Martha Farley

"CFW is one of the only funders of advocacy. At a time of terrible state budgets, this funding is ever more important."

ANNE MARIE MURPHY, METROPOLITAN CHICAGO BREAST CANCER TASK FORCE

Silvia Perez Manetti, board member of grantee WINGS, supports the Suburban Latina Outreach program by organizing trunk shows with fashions from WINGS resale shops.



2011 DONORS (CONTINUED)

INDIVIDUAL DONORS \$100-\$249

Daisy Feidt
Bette Feinerman
Elizabeth F. Feldman
Nancy Felton-Elkins
Sarah and Eric Ference
Denise Ferguson
Sally Csontos Filan
Tom Fink
Elizabeth Finlayson
Aurelia Fisher
Latehesha Fitch
Linda May Fitzgerald
Joan M. Flanagan
Julie Fleetwood
Valerie Fleming
Laura Fletcher
Marya Flood
Patrick and Meave Foley
Elizabeth Forbrich
Lucinda Fox
Joan A. Fragen
Franklin Group
Lynn Freitag
Sherry and Richard Frenzel
Katherine Frerichs
Roxane Friedman
Joan Frontczak
Madelon R. Fross
Rosalie K. Fruchter
Marlo J. Gaal
Carolyn Gable
Judith Gall
Susan Gallagher

Bryna and Edward Gamson
Terri Garland
Carolyn Garrett and
Ben Segedin
Sandra Gates
Susan J. Gault
Judy and Mickey Gaynor
Stella Gaytan-Jara
Patti Gerbie
Sandy Smith Gerding
Julia E. Getzels
Dr. Madhuvanti Ghose
Rebecca Girsch
Nancy Glick
Susanne K. Glink
Deidra D. Gold
Sarah S. Gold
Craig Golden
Clare Golla
Henrietta Gomez
Elizabeth Gonzalez
Debrah Goodman
Amy Gordon and Keith Kudla
Nicole Gotthelf
Jean and Harry Gottlieb
Kathleen Graffam
Dr. Karen L. Granda and
Mr. John S. Mrowiec
Jacalyn Grant
Emily J. Greenberg
Delta A. Greene
Margaret E. Grinnell
Rebecca Gruenspan
Donna Gutman
Sonya K. Guttman
Sharon Haar
Lindsay R. Hagan
Kelly Haley
Emily Halliday

David A. Handler
Dolores K. Hanna
Mary K. Hartigan
Deborah Minor Harvey
Kyle Harvey
Barbara Hausman
Sally Havlis
Rachel Hayman
Raynelle F. Heidrick
Tracy Heilman and Ray Macika
Maureen Hellwig
Charsetta M. Henderson
Roxanne E. Henry
Nicole Herbst
Elizabeth B. Herrington
Michael A. Herst
Helaine Heydemann
Katherine Hickman
Bette Cerf Hill and Bruce Sagan
Laura Hohnhold
Debbie Holm/Ted Studios, Inc.
Ruth Holst
Carol and Joel Honigberg
Mary Lou Horwat
Carrie Hall Horwitz
James and Nancy Hotchkiss
Cheryl Howard
Ora Howard
Heath Howe
Beverly B. Huckman
Lidia Huerta
Marcia Hundt
Jean S. Hunt
Laura Hutchison
Dr. Marie Iliescu-Levine
Jennifer K. Irwin
Lena Ismail
Deone Jackman
Chawn Jackson

Catherine Jacobi
Betty Jacobs
Mary Jaeger
Jennifer Jeffris
Bruce and Mary Sue Jensen
Kim R. Jenson
Jennifer Jobrack
Karen F. Johnson
Kellee Johnson
Sonia W. Jones
Laura Jordahl
Tammie Josifovic
Irene Juaniza
Herta Hess Kahn
Mary and Jerome Kaltman
Carol Kamin
Tara G. Kamradt
Karen A. Kane
Ethel R. Kaplan
Robin B. Katz
Jen and Catherine Kauper-Brown
Nina Kavin
Michelle Kavoosi
Latoria Haney Keith
Colleen Keleher
Rose Kennedy
Andi S. Kenney
Maureen Kenney
Teresa Grady Kerr
Rana J. Khan
Kelly Kleiman
Mary Klonowski
Claire Koeneman
Christine Kolb
Ellen Kollar
Sherry L. Koppel
Laura Kramer
Rebecca Kremin
Al and Dottie Kugel
Kim Kupferberg
Michele S. Kurlander
Nora Kyger
Carolyn Landwehr
Beth M. Lange
Marcella L. Lape
Patricia A. LaPointe
Katherine Lauterbach, DDS
Victoria Lautman
Catherine Gilmore Lawless
Debra and Henry Lawrie
Winfred M. Leaf
Nicole T. Lee
Susan M. Leinwohl
Sara J. Leonard
Linda L. Letcher
Jeryl D. Levin
Megan Levin
Susan Levine
Dana Levinson
Betsy Lehman Levisay
Kristin Lewis
Roslyn and Michael Lieb
Janice Linn and Richard Pincus
Susan Lipshutz
Linda Lipton
Lois Lipton and Richard Carey
Marcia A. Liss

Two young women sing at a preview showcasing their work-in-progress, as part of grantee Storycatchers Theatre's Fabulous Females program at the Illinois Youth Center at Warrenville.





Working at the Intersections of...

Diversity and Community Service

A nonprofit organization needs a strong board of directors to thrive—that’s something Chicago Foundation for Women hears from grantees all the time. It’s perhaps no coincidence that small nonprofits have difficulty recruiting dedicated board members from diverse backgrounds, and myriad women who support CFW—including members of the Leadership Councils—say they feel unprepared to step into that role. To close this gap, this year Chicago Foundation for Women launched the Board Boot Camp to train women for board service and then match them with Chicago’s most effective nonprofits.

Supported by Crown Family Philanthropies, the two-and-a-half day Board Boot Camp in June 2011 offered interactive workshops to 38 Chicago-area women from various professions, neighborhoods and backgrounds. The curriculum covered board roles and responsibilities, nonprofit financials, how to run effective meetings, and the basics of fundraising.

Although she had already served her first year on a board, African American Leadership Council member **Jennifer Franklin** said the training gave her the tools she didn’t realize she would need. “Although I got lucky with [CFW grantee] Rape Victim Advocates, had I realized how much I would need to know, I probably would’ve tried to seek out training before joining a board,” said Jennifer.

Likewise **Allison Lowe-Fotos**, a steering committee member of the Young Women’s Leadership Council, says the boot camp made her feel prepared for board service—and she was struck by the diversity of participants. “I was expecting, I don’t know why, mostly younger women,” Allison said, “but we were all there to learn, and we were learning so much, including from each other.”

“I was really impressed with all of the candidates’ preparation,” said **Kathy Miller**, director of communications and development at the Center for Tax and Budget Accountability, a CFW grantee. Kathy took part in an evening matchmaking reception sponsored by the Pierce Family Foundation, where dozens of nonprofits set up information tables for Board Boot Camp participants. Kathy said, “These women did their homework about CTBA, asked me good questions and knew concrete ways they could help us.”

Above: The graduates from Chicago Foundation for Women’s inaugural Board Boot Camp rated their experience highly, and CFW is planning a repeat of the successful program soon.

Inset: Kathy Miller (left) tells Jennifer Franklin about the mission and board member requirements of the Center for Tax and Budget Accountability at the Board Boot Camp’s networking night.



Working at the Intersections of...

Feminism and Philanthropy

Above: Nancy Juda (center) with her guest Morgan Weller (left) and CFW staff member Linda L. Wagner at the 2011 Impact Awards. Nancy co-nominated honoree Amy Maglio from the Women's Global Education Project.

Inset: Nancy Juda puts the finishing touches on her mosaic tile at a volunteer day for CFW's 25th anniversary murals project.

Nancy Juda can give you three good reasons why she supports Chicago Foundation for Women. First she points out that as a feminist she loves the mission of helping women and girls, and second she notes the importance of the local focus on the Chicago area. The third reason, however, sticks out.

"Laziness," laughed Nancy, a CFW board member. "Seriously, I can count on the fact that my dollars will go to the right places. The work has already been done to find strategic, effective organizations that can make a big difference."

Nancy's humility sells her short—she is the hard-working vice-chair of the Program Committee, which oversees CFW's volunteer-driven grantmaking process. Community volunteers and board members assist staff in reviewing grant applications, selecting which groups move forward and then visiting prospective grantees' program sites to learn more about their work.

Nancy has gone on at least a dozen site visits over the past few years, she said. "I'm really moved by the work these groups are doing with a minimum of resources," Nancy said. "Every community has different needs, stories and opportunities."

As an artist, Nancy enjoyed volunteering at a mosaic tile workshop as part of CFW's 25th anniversary celebration. The tiles are part of a mural honoring Jane Addams installed in Chicago's Streeterville neighborhood, a CFW-funded project of Chicago Public Art Group and lead artist Mirtes Zwierzynski.

Whether wearing the hat of artist, board member or donor, Nancy said she feels a connection to the Foundation. "I find that what I have to bring to the table is valued. My voice is valued. Frankly, if what we're about is empowering women and girls, I'm one of them. I get empowered by being here."

2011 DONORS (CONTINUED)

INDIVIDUAL DONORS \$100-\$249

Janice Liten
Chandra Littooy
Rose Lizarraga
Elaine Llerena
Elena Lojo
Maureen Loughnane
Louise and Ernie Love
Linda Loving
Mary B. Lubertozzi
Connie M. Luecke
Sandra S. Lund
Joan Garvey Lundgren
Heidi Lynch
Kim Lynch
Nancy J. Lynn
Wendy Lynn
Gabrielle H. Lyon
Michael Lyon
Daina Lyons
Deborah and David MacKenzie
Eva L. Maddox
James Madigan
Bertha G. Magaña
Amy Maglio
Kathleen Malinge
Marissa Manos
Maggie Marcus
The Mardie MacKimm Fund
Robert Marin
Katie Mark
Gina Marotta
Rosanna A. Marquez
Sandra and Peter Mars
Marisol Martinez
Sonja Martinez
Cynthia Mastbrook
Ulrika Mattsson
Christine Maxwell
Beatrice Cummings Mayer
Linda M. Mayer
Anya Sophia Maziak
Judith P. McBrien
Breeda McGrath
Jacqueline L. McKay
Diane M. McKeever
M. Julie McKinley
Lynne E. McNown
Cody McSellers-McCray
Cindy McSherry
Jean Meadows
Rupa Mehta
Sujata Mehta
Alice Meisels
Christopher Meister
Shana Melanson
Roberto Menjivar
Kerri Metcalf
Dorothy Meyer
Mari Meyer
Sheila Meyer
Pam and Charlie Meyerson

Carolyn and Robert Meza
Janet S. Migdow
Shirley Miller
Anne Simon Moffat
Honor B. Mogul
Joy L. Monahan
Mary Lee Montague
Angela Moody-Parker
Paula J. Morency
Patti Morrell
Elizabeth and Gareth Morris
Suzanne Morrison
Sarah Moskowitz
Bela Moté
Jeanette M. Moulthrop, MD
Mary Ellen Munley
Lynn H. Murray
Sameena Mustafa
Julie Nakagawa
Dr. Surinder Nand
Carolyn C. Narasimhan
Donsanell Nash
Tamara L. Nelson
Scott Nelson
Kelly Newhall
Tonya G. Newman
Carrie Newton
Suzanne Nicksic
Carolyn and Ken Nopar
Mona Noriega
Joan S. Nowicki
Patricia O'Brien, Ph.D., MSW
Ruth O'Brien
Mary O'Connell
Katherine P. O'Halleran
Linda and Mark Odegard
Camille Odeh
Sarah Ann Oliver
Maya Omar
Susan and Ted Oppenheimer
Rebecca Orozco
Kelly Ortega
Lynn J. Osmond
N. McGhee Osse
Meg Ostrom
Lori Ovitz
Geri L. Palmer
Jeanah Park
Parul M. Patel
Susan Patel

Ranjana Patnaik
Frankie J. Patterson
Nancy and Thomas Patterson
Lynn Pautler
Corella Payne, M.ED, MPH
Will Pearson
Jodi Patt Pellettiere
Adela Peña
Shari Pergricht
Personal Office Management, Inc.
Maria and David Pesqueira
Karen Peters and
Charles E. Frank, MD
Corinne Peterson
Celene Peurye-Hissong
Amy Phelan
Joan Pikas
Alex Piper
Renee A. Pleshar
Kali Plomin
Jeanie Pollack
Wendy Pollack
Martha B. Preiss
Carmen Prieto
Vicky Purnell
Tracy Quattrochi
Jennifer Rakstad
Sharmila Rao
Julie and John Rapisarda
Bryn Reese
Janet P. Remen
Sharon Repka
Amy Robbins, MD
Taryn J. Roch
Sheila Roche
Priscilla H. Rockwell
Jane B. Rodriguez
Pier C. Rogers
Julie Roin
Wendy Rosen
Linda Rosenblum and
Steven Swiryn
Sheryl Rubel
Joyce L. Ruben
Amy Gusinow Rubin
D. Katreina Ruffin
Ethel Russaw, Ed.D., R.N.
Chris Ruys
Scott Sachnoff and Dory Rand
Beth Saks and Scott Fithian

Kaarina Salovaara
Natalie Saltiel
Nina D. Sanchez
Cheryl Sandner
Regina S. Santanna
Kelly Suzanne Saulsbury
Deborah M. Sawyer
Kathy Schaeffer
Carole Schecter
Marcy D. Schlessinger
Jennifer Schlott
Karen M. Schneider
Leonard and Joyce Schragger
Brenda Schumacher and
Pat Standley
Muriel and Maurice Schwartz
Sally Schwartz
Jennifer Abman Scott
Phoebe B. Scott
Belinda J. Scrimanti
Reema Sebastian
Cheryl Segal
Leslie Sevcik
Joyce Shanahan
Angela Shansky
Wendy Berger Shapiro
Britt Shawver
Arlene Sheskin
Robin D. Shoffner
Elizabeth Siegel and
Greg Jacobs
Linda Soreff Siegel
Nancy Sergey Siegel and
Steven M. Siegel
Gustavo Siller
Lisa Simmons
Maria Simon
Karen Singer
Mary B. Singh
Namrata Singh
Maia Davis Singleton
Mary Ann Sisco
Kathy Slaughter
Emily A. Slavin
Patricia Costello Slovak
Arden and Charles Small
Heather Smedstad
Ann E. Smith
Deirdre Joy Smith

"Our first CFW grant was a stamp
of approval from women who looked closely
at where their funds were going."

KAREN THOMSON, LITERATURE FOR ALL OF US

2011 DONORS (CONTINUED)

INDIVIDUAL DONORS \$100-\$249

Leslie M. Smith
 Louise K. Smith
 Mary Anne Smith
 Shanel Smith
 Stephanie Smith
 Lisa Snow and Franco Turrinelli
 Lisa M. Soard
 Terese Sommer
 Carollina Song
 Sondra Sonneborn
 Wendy and Bill Spatz
 Julie Stagliano
 Trimmy Stamell
 Naomi M. Stanhaus
 Patricia Stankovic
 Anita E. Stauffer
 Carol K. Stein
 Sylvia Stein
 Paige Stenzel
 Lisa Stephens
 Andrea Stetz
 Melinda Stolley
 Susan Straus
 Deborah D. Strauss
 Lauren Streicher
 Susan Struve
 Sheeba Suhaskumar
 K.T. Sullivan
 Julia Suprock
 Emily Muskovitz Sweet
 Bintou Sy
 Gloria Jean Sykes
 Phyllis Tabachnick
 Vanessa Tanaka
 Rebecca Tancredi
 Margaret Tarkington
 Susan Tatnall
 Willa J. Taylor
 Lucy Tebbetts
 Abbe Temkin
 Sarah F. Terman
 Amy Terpstra
 Rebecca Ford Terry



Precious Cantrell Jones (left) and Delaiah Amerson-London both sang solos at the August 2011 "Victory Over Violence" performance by The Empowered Fe Fes, a program for young women with disabilities at grantee Access Living.

Lisa Tharpe
 Megan Thibert-Ind
 Kathy Tholin
 Karen and Doug Thomson
 Haley Thorpe
 Rekha Tobaccowala
 Lisa Tomscheck

Kathleen A. Toohill
 Lisa Torgerson
 Mary Torgerson
 Michelle Trotter
 Yale F. Trustin
 Janet M. Trzaska
 Mary Lee Turk
 Lisa Tylke
 K. Tyschper and C. Paret
 Christy Uchida
 Reven Uihlein-Fellars
 Eva and Alan Unikel
 Karie J. Valentino
 Robin Varnado
 Elizabeth J. Vastine
 Jennifer Vidis
 Ester C. Viti
 Robin Vogel
 Diane Vojtas
 Dr. Annabelle Volgman
 Sarah and Michael Wagner
 Ashley Walker
 Nancy Ward
 Chelsea Warren
 Sheri Warsh
 Roberta L. Washlow

Julia R. Weertman
 Susan J. Weingartner
 Marilyn Weissglass
 Barbara and Bert Weller
 Karen Wells
 Barbara Z. Wenk
 Mrs. Florence F. Wheeler
 Kelly White and Bill McLellan
 Elizabeth Whitehorn
 Stacia Whitmore
 Samantha Whitney
 Eugena A. Whitson-Owen
 The Williams Family
 Cheryl S. Wilson
 Cindy Wilson and Chip Peters
 Bernadine Wims
 Susan Winer
 Carolyn K. Winick
 Pamela Winthrop
 Susan and Bob Wislow
 Beth Wittbrodt
 Robin Wold/Robin's Food
 Distribution, Inc.
 Gretchen Wolf
 Sallie Wolf
 Ann S. Wolff

"I commend Chicago
 Foundation for Women for
 its commitment to women
 and our community."

CITY OF CHICAGO MAYOR RAHM EMANUEL

Connie S. Wood
 Diane P. Wood
 Maria E. Wynne
 Melinda Yachnin
 Caren Yanis
 Marisol Ybarra
 Doyoung Yong
 Virginia Young
 Denise Zaccardi
 Nannette V. Zander
 Laura Zuckerman
 Rhyan M. Zweifler

CORPORATIONS AND FOUNDATIONS

\$100,000+

Groundswell's Catalyst Fund of
 Tides Foundation
 Searle Funds at The Chicago
 Community Trust

\$50,000–\$99,999

The Libra Foundation
 Polk Bros. Foundation

\$25,000–\$49,999

Alphawood Foundation
 Leo S. Guthman Fund
 Louise H. Landau Foundation
 Macy's Foundation
 Chauncey and Marion D.
 McCormick Family
 Foundation
 Pierce Family Foundation
 The Richard H. Driehaus
 Foundation
 United Airlines

\$10,000–\$24,999

Bank of America
 Crown Family Philanthropies
 The Duchossois Family
 Foundation
 The Fairway Network
 Kraft Foods
 Prince Charitable Trusts
 Target Stores
 UBS

\$5,000–\$9,999

ABC 7 Chicago
 The Allstate Corporation
 Aon Foundation
 The Boeing Company
 The Chicago Community Trust
 Chicago Urban League
 CVS Caremark
 DePaul University
 The Female Health Company
 Goldman, Sachs & Co.
 Irving Harris Foundation
 The Johnson Foundation
 KPMG LLP
 Marineau Family Foundation

The Nielsen Company
 Peoples Gas
 RR Donnelley
 Schiff Hardin LLP
 Thanksgiving Fund
 U.S. Cellular

\$2,500–\$4,999

Abbott Laboratories
 Accenture
 Access Community Health
 Network
 Baker & McKenzie LLP
 Brinks Hofer Gilson & Lione
 The Coalition of Women's
 Initiatives in Law Firms
 Columbia College Chicago
 Deloitte.
 Emergency Fund
 Harris Bank
 Ho-Chunk Nation
 Jenner & Block LLP
 LUMA Loyola University
 Museum of Art
 McGladrey
 Motorola Solutions Foundation
 Navigant Consulting, Inc.
 Ogletree Deakins
 Quarles & Brady LLP
 RR Donnelley Foundation
 Rush University Medical Center
 Sahara Enterprises, Inc.

Skadden, Arps, Slate, Meagher
 & Flom LLP
 U.S. Equities Student Housing
 UnitedHealthcare
 University of Phoenix
 Wildman, Harrold, Allen &
 Dixon LLP

\$1,000–\$2,499

Baxter International Inc.
 Celebrated Chefs
 Cole Taylor Bank
 Conestoga-Rovers &
 Associates, Inc.
 Heartland Alliance For Human
 Needs & Human Rights
 Holland & Knight LLP
 Illinois Coalition for Immigrant &
 Refugee Rights
 LISC/Chicago
 The Osa Foundation

MATCHING GIFT COMPANIES

Anonymous
 Bank of America
 The Boston Consulting
 Group, Inc.
 The Chicago Community Trust
 Crown Family Philanthropies
 Gaylord & Dorothy Donnelley
 Foundation

Illinois Tool Works Foundation
 The John D. & Catherine T.
 MacArthur Foundation
 Kraft Foods
 McCormick Foundation
 Northern Trust Company
 Polk Bros. Foundation
 U.S. Cellular
 UBS

IN-KIND DONORS

Denise M. Baranowski, CTFA
 Michelle S. Carr
 Renee Citera
 The Drake Hotel
 Ginny Holt
 Hotel Palomar Chicago
 Jenner & Block LLP
 Kate and Michael Kennedy
 Andrea S. Kramer
 Marcena W. and Norris Love
 RHR International
 Rocket Ranch Productions
 Melba Rodriguez
 Rosebud Restaurants
 Leora and Mort Rosen
 T. Salon and Gallery
 Sharmila Rao Thakkar
 TotalWorks, Inc.
 United Airlines



Participants in the Peace Program at grantee Mujeres Latinas en Acción made signs for the agency's domestic violence march named "Not One More Victim."

Financial Statements

STATEMENT OF ACTIVITIES

For the fiscal year ended June 30, 2011

REVENUE

Individual Donations	\$ 672,203
Corporate and Foundation Grants	390,000
Special Events (net of direct benefit to donors)	640,604
Investment Return	1,027,680
In-Kind Donations	31,316
<hr/>	
Total Support and Revenue	\$ 2,761,803

EXPENSES

Program Services	1,672,979
Fundraising	257,660
Management and General	64,645
<hr/>	
Total Expenses	1,995,284
<hr/>	
Change in Net Assets	766,519
Net Assets Beginning of Year	5,470,235
<hr/>	
Net Assets End of Year	\$ 6,236,754

STATEMENT OF FINANCIAL POSITION

As of June 30, 2011

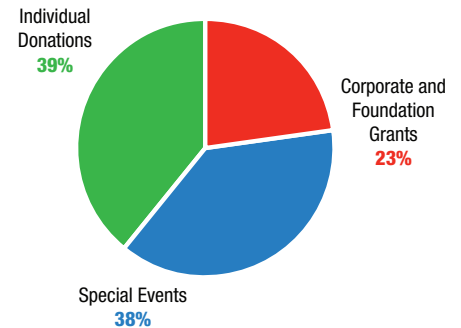
ASSETS

Cash	\$ 73,616
Investments	6,274,665
Receivables	71,000
Prepaid Expenses	74,011
Fixed Assets (net)	23,900
<hr/>	
Total Assets	\$ 6,517,192

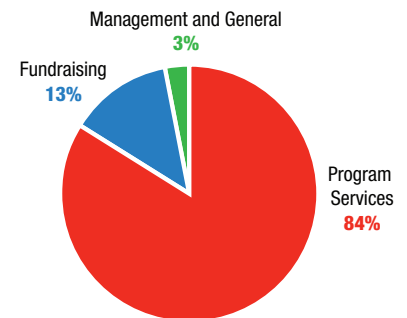
LIABILITIES AND NET ASSETS

Accounts Payable	\$ 4,287
Accrued Expenses	19,038
Deferred Revenue	257,113
Net Assets	6,236,754
<hr/>	
Total Liabilities and Net Assets	\$ 6,517,192

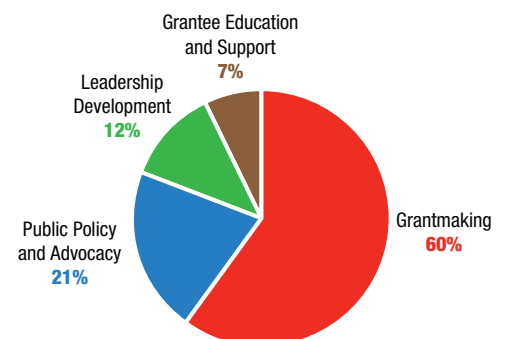
FUNDRAISING REVENUE



EXPENSES



PROGRAM SERVICES



To receive a copy of the audited financial statements, please visit www.cfw.org/publications or call Chicago Foundation for Women at 312.577.2801, TTY 312.577.2803.

BOARD OF DIRECTORS

Andrea S. Kramer
Chair

Gail Ludewig
Past Chair

Catherine Braendel
Secretary

Wendy K. White Eagle
Treasurer; Chair, Finance

Marjorie Halperin
Chair, Communications

Sharmila Rao Thakkar
Chair, Program

Aylice M. Toohey
Chair, Board Governance

Laura A. Tucker
Chair, Resource Development

Queta Rodriguez Bauer
Isa Ellis

Leslie G. Fenton

Trina M. Fresco

Nancy Juda

Kathryn G. Kennedy

Wendy Manning

Susan E. Morrison

Jean Pogge

Kathleen Johnson Pope

Cheryl I. Procter-Rogers

Nicole R. Robinson

Leora Rosen

Gabrielle Sigel

Anita K. Sinha

Barbara Stewart

Nannette V. Zander

Frances K. Zemans

STAFF

K. Sujata
President/CEO

Monique Brunson
Senior Program Officer

Emily Dreke
Director of Development and Communications

Laura Fletcher
Communications Manager

Elizabeth Hartig
Programs and Grantmaking Intern

Debbie H. Myung
Development Assistant

Meridel Thomson
Associate Program Officer

Linda L. Wagner
Vice President of Finance and Administration

Bernadine Wims
Executive Coordinator

FOUNDERS

Marjorie Craig Benton

Sunny Fischer

Iris J. Krieg

Lucia Woods Lindley

PROFESSIONAL ADVISORY COUNCIL

Janice E. Rodgers
Chair

Karim HK Ahamed, CFA

Patricia H. Besser

David Butts

Michelle S. Carr

Debra M. Doyle

Clare Golla

Marguerite H. Griffin

David A. Handler

James R. Hellige

Tiffany Irving

Neil T. Kawashima

Kathryn G. Kennedy

Paula Jill Krasny

H. Debra Levin

Deborah Moline

Donna E. Morgan

John Newlin

Rima D. Ports

Tom Schroeder

Patricia Costello Slovak

Paul A. Svoboda

Chad A. Tischer, CFP

Mary Lee Turk

Sally L. Venverloh

Kristin Carlson Vogen

Deborah Lust Zaluda, J.D.

LEADERSHIP COUNCIL CO-CHAIRS

African American

Cody McSellers-McCray

Elaine Millsap-Parker

Asian American

To be announced

Latina

Carla Agostinelli

Omayra Garcia

Lesbian

Evette Cardona

Jane M. Saks

Young Women's

Brady Donaldson

Dana Kelly

Allison Lowe-Fotos

Sonja Martinez

ALUMNAE COUNCIL

Audrey Rone Peebles

Co-Chair

Carleen Schreder

Co-Chair

Zully JF Alvarado

Antoinette M. Bailey

Coni Batlle

María C. Bechily

Ruth K. Belzer

Ellen J. Benjamin

Marjorie Craig Benton

Ida Bialik

Allegra E. Biery

Saundra Bishop

Jeanne M. Branson

Betsy Brill

Leontyne Brown

Mattie Butler

Dorian K. Carter

Gerri Cicchinelli

Dee Clancy

Fay Clayton

Carrie Cochran

Vickii Coffey

Gwen Gilbert Cohen

Marge Collens

Doris Conant

Judith S. Cottle

Susan Crown

Susan E. Davis

Barbara Dillard

Barbara Engel

Marlinda English

Sondra Berman Epstein

Edith H. Falk

Sunny Fischer

Polly A. Flinn

Rita M. Glass, Ed.D.

Judy Gold

Ann E. Goldman

Mary Gonzales

Radhika Sharma Gordon

Sandra B. Grear

Marguerite H. Griffin

Suzanne Gylfe

Trudy A. Hardin

Deborah Minor Harvey

Susan S. Hassan

Millicent Holmes

Mae P. Hong

Barbara Howard

Karen J. Howell

Elizabeth Huesemann

Kathy Hurley

Heather T. Hutchison, CFRE

Alejandra L. Ibañez

Angela Im

Katherine James

Laura A. Jibben

Jetta N. Jones

Polly B. Kawalek

Arlisha Kennedy

Kanta Khipple

Barbara Levy Kipper

Sally Meyers Kovler

Rachel E. Kraft

Iris J. Krieg

Leslie Landis

Judy Langford

Bobbie Craddock Lawrie

Suzanne B. Leonard

Juju Lien

Lucia Woods Lindley

Lois J. Lipton

Marcena W. Love

Challis M. Lowe

Bertha G. Magaña

Susan Graf Marineau

Patricia R. McMillen

Karen Meyer

Dana M. Mikstay

Jo Moore

Patty McDermott Moore

Joyce E. Moran

Mary F. Morten

Andrea Murphy

Yvonne Murray-Ramos

Suzanne Musikantow

Tamara L. Nelson

Grace Allen Newton

Achy Obejas

Darlene M. Oliver

Lisa C. Page

Cheryl Pearson-McNeil

Celene Peurye-Hissong

Marianne Philbin

Jamie Phillippe

Anita Pluta

Norma L. Polanco-Boyd

Gaye E. Preston

Carmen Prieto

Carol Prins

Susan Pritzker

Sylvia Puente

Carrie Pugh

Christine Redcloud

Tipawan Truong-Quan Reed

Beth E. Richie

Amalia S. Rioja

Janice E. Rodgers

Virginia H. Rogers

Ann Rohlen

Barbara Rose

Sheli Z. Rosenberg

Ruth M. Rothstein

Susan Rubenstein

Jane M. Saks

Juanita Salvador-Burris

Pat Pulido Sanchez

Terry Rose Saunders

Edna J. Schade

Margot Levin Schiff

Jace Schinderman

Diana Palomar Scott

Lisa T. Scruggs

Mita D. Shah

Rebecca Sive

Joan F. Small

Deirdre Joy Smith

Muriel F. Smith

Ana Maria Soto

Donna M. Stone

Jann Stulberg

Donna J. Thompson

Linda E. Traeger

Sarah Triano

Mary E. Tudela

Susana Vasquez

Gertie Washington

Vanessa J. Weathersby

Cynthia Williams

Paula Wolff

Patricia Yuzawa-Rubin

Lists are current as of September 27, 2011

PHOTO CREDITS:

Front cover, clockwise from top left: Between Friends, Nancy Juda, Girls in the Game, Kat Fitzgerald.

P. 1: McDermott Will & Emery (L), Kat Fitzgerald (R).

P. 2: Amigas Latinas.

P. 5: Project Exploration (L and R).

P. 6: Bright Endeavors, a social enterprise of New Moms, Inc.

P. 9: Marisol Ybarra.

P. 10: Laura Fletcher (L and R).

P. 11: Patricia Broughton.

P. 13: Tina Dravecky.

P. 14: Storycatchers Theatre.

P. 15: Marisol Ybarra (L and R).

P. 16: Shara Kaplin (L), Kat Fitzgerald (R).

P. 18: Evelyn Rodriguez.

P. 19: Mujeres Latinas en Acción.

Back cover, clockwise from top left: Camille Whitworth, Studio Starling, Lucky Mosqueda, Deborah's Place.

Upper left: While volunteering for grantee Chicago Books to Women in Prison, Jessica Black selects a book requested by an incarcerated woman.

Upper right: Tammie Ismail (second from left), principal of the all-girls Aqsa School, received a 2011 Breaking Barriers award from CFW's Asian American Leadership Council.

Lower left: The Divas of grantee Deborah's Place, a tenant leadership team of the Rebecca Johnson Apartments, dress up for a tea party to show their appreciation of and support for fellow tenants.

Lower right: Benjamin Perry, organizing fellow and member of grantee Gender JUST, speaks at a youth-led press conference about the criminalization of queer youth and youth of color.



Chicago Foundation for
women

One East Wacker Drive, Suite 1620

Chicago, Illinois 60601-3583

TEL: 312.577.2801 • FAX: 312.577.2802 • TTY: 312.577.2803

info@cfw.org • www.cfw.org

