



# Altgeld-Riverdale Consortium

## Outcome Findings

March 2015

# Report Information

---

The Social IMPACT Research Center thanks the Chicago Housing Authority staff, sub-grantees, partners, and residents, as well as residents of the Altgeld-Riverdale community who all set aside time in their busy days to participate in meetings, interviews, focus groups, and data collection for this evaluation.

This project was supported by Grant # 2009-DJ-BX-0023, awarded by the Bureau of Justice Assistance, Office of Justice Programs, U.S. Department of Justice, through the Illinois Criminal Justice Information Authority. Points of view or opinions contained within this document are those of the author and do not necessarily represent the official position or policies of the U.S. Department of Justice, or the Illinois Criminal Justice Information Authority.

**Report Authors:** Lindy Carrow

**Research Team:** Lindy Carrow, Suniya Farooqui, Amy Terpstra, Katharine Sidelnik, Katherine Stuehrk, and Jennifer Clary

**Suggested Citation:** Carrow, L. (2015, March). *Altgeld-Riverdale Consortium: Outcome Findings*. Chicago: Social IMPACT Research Center.

## **The Social IMPACT Research Center**

The Social IMPACT Research Center conducts applied research for nonprofits, foundations, advocacy groups, governments, coalitions, and the media to help them measure, inform and grow their social impact. IMPACT also regularly reports on key poverty trends to equip decision makers with sound data to inform public policy. Visit [www.socialimpactresearchcenter.org](http://www.socialimpactresearchcenter.org) to learn more.

Copyright © 2015 by the Social IMPACT Research Center at Heartland Alliance.

All rights reserved.

## Table of Contents

<b>Report Information</b> .....	<b>1</b>
<b>Executive Summary</b> .....	<b>3</b>
<b>1. Introduction</b> .....	<b>5</b>
1.1. ARC Overview .....	<b>5</b>
1.2. Evaluation Overview .....	<b>6</b>
<b>2. 2014 ARC Activities</b> .....	<b>8</b>
2.1. ARC Community Engagement and Communication .....	<b>8</b>
2.2. ARC Meetings .....	<b>8</b>
2.3. Community Events .....	<b>9</b>
<b>3. ARC's Impact on Feelings of Safety in the Community</b> .....	<b>10</b>
3.1. Safety in the Community .....	<b>11</b>
3.2. Impact of ARC's work on Feelings of Community Safety .....	<b>12</b>
3.3. Community Recommendations for ARC .....	<b>13</b>
<b>4. ARC's Impact on Crime Occurrences in the Community</b> .....	<b>15</b>
4.1. Change in Neighborhood Crime .....	<b>15</b>
4.2. Neighborhood Crime Hot Spots—Change Over Time .....	<b>19</b>
<b>5. Conclusion</b> .....	<b>22</b>
5.1. Recommendations Moving Forward .....	<b>22</b>
<b>Appendix A: Methods</b> .....	<b>25</b>
<b>Appendix B: Safety Survey</b> .....	<b>27</b>
<b>Appendix C: Focus Group Questions</b> .....	<b>33</b>
<b>Appendix D: ARC Meeting Notes</b> .....	<b>35</b>
<b>Appendix E: Safety Event Notes</b> .....	<b>38</b>
<b>Appendix F: Crime Hot Spot Maps</b> .....	<b>41</b>

# EXECUTIVE SUMMARY

## ARC'S GOALS

1. Improve and strengthen community safety
2. Create vehicles for consistent communication
3. Increase utilization of community resources

*This evaluation report focuses only on goal 1*

In 2014, the Altgeld-Riverdale Consortium (ARC) continued to work toward their goals of improving and strengthening community safety, creating vehicles for consistent communication, and increasing utilization of community resources. The ARC worked toward these goals by engaging in and supporting the following activities:

- In 2014, 700 newsletters were distributed, and 26 posts were made to the Community Beat website and/or calendar to share information about resources and activities in the community.
- 10 Safe Path workers patrolled the neighborhood at resident-identified trouble areas.
- ARC held 17 resident-driven community safety events with over 2,200 resident attendees (many likely attending multiple events, so double-counted in this total).
- ARC continued the development of a leadership structure and focused subcommittees, such as the Safety & Transportation Advisory Council (STAC) and a Youth Advisory Council.

This report serves as the second chapter of the evaluation that IMPACT conducted in 2013, *Altgeld-Riverdale Consortium: Evaluation Findings*, and focuses on the partnership's impacts on the community. This report evaluates the ARC's progress toward its first goal of improving and strengthening community safety. The research questions are as follows:

1. Has resident perception of safety and crime changed as a result of the ARC's work in the community?
2. Have crime patterns changed during the ARC's involvement in Altgeld-Riverdale community?

The ARC has been effective at improving feelings of safety within the community. Residents who attended ARC events and activities felt that they were useful and helped to make the community safer.

The ARC's efforts do not appear to have had a significant impact on crime rates in the community. And while there is no definitive evidence of the impact of ARC on neighborhood crime, there has been a reduction in crime incidents since the implementation of the new ARC model in 2013. The change is small, but coalition-building and community development can be a slow process, so it is unsurprising to see little change in crime data at this point. The ARC's impact on feelings of safety in the community supports the fact that they are on the path toward improving safety. However, since the beginning of ARC's involvement (and prior to involvement), crime rates in Altgeld-Riverdale have remained high in comparison with other Chicago Community Areas. And

though crime hot spots have shifted geographically over the years, large crime hot spots still remain within the community.

In order to build on progress to date and more fully realize its first goal of improving and strengthening community safety in the future, the ARC should consider the following recommendations:

- **Continue to strengthen community outreach and communications.** While there has been noted growth within the ARC, there is still little understanding within the community of what the ARC does or who they are. Once given information on the ARC, residents are often interested in getting involved and joining in the effort to strengthen the community.
- **Work to strengthen community relations with police.** There is a great deal of tension in the community between residents and the Chicago Police Department. The ARC can serve as an advocate or a collective voice for the community in any efforts toward systemic change.
- **Advocate for community resources.** The root cause of community-wide crime hot spots, as seen in the Altgeld-Riverdale community, is often systemic or economic in nature, generally pointing toward bigger-picture solutions, such as broad scale employment programs.
- **Continue or expand current efforts.** The ARC's efforts have been successful at improving feelings of safety in the community. Residents see the need for the ARC and suggested increasing current efforts: hosting more events, providing more activities, and expanding the Safe Path patrol program.

# 1. INTRODUCTION

## ARC GEOGRAPHY

*The Chicago Community Area of Riverdale includes Altgeld Gardens, as well as Golden Gates, Concordia Place, and Riverside Village apartment complexes. These complexes are sometimes referred to as different neighborhoods within the larger community. In this report, we refer to the community as a whole as Altgeld-Riverdale or simply Riverdale.*

## ARC SUB-GRANTEES

*The following sub-grantee partners were involved in the ARC effort and received grant funds to support their programs and services operated or provided within the Altgeld-Riverdale area during the 2014 grant period:*

*Chicago Police Department*

*Roseland Ceasefire*

*Social IMPACT Research  
Center*

*Community Justice for Youth  
Institute*

*Uhlich Children's Advantage  
Network (UCAN)*

The Social IMPACT Research Center was contracted by the Chicago Housing Authority in 2013 to conduct an evaluation of the Altgeld-Riverdale Consortium's efforts to improve community safety. This report serves as the second chapter of that evaluation and focuses on the partnership's impacts on the community. The first report, *Altgeld-Riverdale Consortium: Evaluation Findings*, serves as a program implementation documentation report and goes into more detail about the key stakeholders and partners, activities, and goals of the partnership. For more information on the history and past activities of the ARC, refer to that report. This report focuses on activities in 2014 and goes into more detail about some of the outcomes of that collaborative work.

### 1.1 ARC Overview

The Altgeld-Riverdale Consortium (ARC) is a partnership of community residents, social service agencies, community organizations, and government agencies who have come together to build community and increase safety in Riverdale, a neighborhood on the far south side of Chicago. The ARC has existed in the community since 2002 in some form and began in earnest in 2008, but its focus shifted in 2013 in response to community concern about youth crime. Prior to 2013, the ARC was more of a youth development model, and since 2013 has focused more squarely on safety and crime. The group's activities are supported by funding from the U.S. Department of Justice, Justice Assistance Program awarded by the Illinois Criminal Justice Information Authority. The Chicago Housing Authority (CHA) was the official grantee and fiscal agent for the project and continued to serve as one of the lead partners in the ARC's effort over this current grant period (January 2014 – March 2015).

In 2014, the ARC continued to evolve and develop, further solidifying an organizational structure, mission, and vision.

The ARC's Vision Statement is as follows (adopted 9/4/2014):

*A diverse and resident-engaged community that is safe and healthy and allows all to enjoy a high quality of life.*

The ARC's Mission Statement is as follows (adopted 9/4/2014):

*ARC is a neighborhood-driven initiative that aims to enhance quality of life for residents living in ARC neighborhoods through building awareness, facilitating safe passage, increasing peace, and respecting life. We do this by connecting neighborhoods and residents with one another, coordinating initiatives and activities, collaborating, communicating, and networking.*

The ARC's model of carrying out its work involves engaging a diverse group of sub-grantees and other community partners. There is one Partnership

## **ARC PARTNERS**

The ARC worked toward its goals in collaboration with the following community partners—service agencies, coalitions, schools, and individuals—which are located within or provide programs and services within and for the Altgeld-Riverdale area:

*Active Transportation Alliance*  
*Alderman Beale (9th Ward)*  
*Aldridge School*  
*Altgeld Gardens Local Advisory Council (LAC)*  
*Altgeld Gardens Tenant Patrol*  
*Altgeld-Riverdale Early Learning Coalition*  
*Business and Professional People for Public Interest (BPI)*  
*Carver Elementary School*  
*Carver Military High School*  
*Centers for New Horizons*  
*Chicago Housing Authority*  
*Chicago Park District—Carver Park*  
*Chicago Police Department (Central Office, District 5 Police, and CAPS)*  
*Chicago Public Library—Altgeld Branch*  
*Chicago Public Schools: School Safety & Security Department*  
*Community Justice for Youth Institute*  
*Cook County Forest Preserves (Beaubien Woods)*  
*Concordia Place Apartments*  
*Dorothy Gautreaux Child Development Center*  
*DuBois School*  
*East Lake Management Group*  
*George Washington Carver Farmers' Market*

Coordinator, a full-time employee of the ARC sub-grantee UCAN, who works to support the ARC's efforts, connect its members and residents, and to assist community partners to plan safety initiatives and be involved in the ARC's work. ARC funding also continued to support the work of Safe Path patrollers in 2014, as explained in the first report (p. 15).

In 2014, the ARC developed a Leadership/Coordinating Committee structure. Resident leaders from each neighborhood volunteered to be part of the committee, which is responsible for:

- Providing candidates for community coordinator
- Providing candidates for Safe Path and Outreach workers
- Approving projects
- Setting ARC meeting agendas
- Governing ad hoc activities
- Acting as liaisons to organizations
- Implementing trainings for new committee meetings
- Engaging members to join leadership

The Leadership/Coordinating Committee is still developing its structure but has already begun to lead the ARC and work closely with the ARC Coordinator to continue to move the partnership forward.

Since the prior evaluation report on the ARC, members also developed the Safety & Transportation Advisory Council (STAC) and are beginning to develop a Youth Advisory Council. The Community Justice for Youth Institute's work conducting and training in the use of Peace Circles has also expanded within schools in the community, with multiple principals embracing the concept and creating specific spaces to conduct the Circles. Safe Path workers have also continued to patrol the community and work to reduce crime. Safe Path Patrollers also had monthly trainings as Violence Interrupters in 2014 (beginning in June) by Roseland Cease Fire.

### **1.2 Evaluation Overview**

While the prior evaluation report documented program implementation and history, this report focuses more on the ARC's impact on the community and the outcomes of its activities. The ARC's goals have remained the same as they were in 2013:

1. Improve and strengthen community safety
2. Create vehicles for consistent communication
3. Increase utilization of community resources

Using local crime data, surveys of ARC community safety event attendees,

**ARC PARTNERS, continued**

*Golden Gate Homeowners Association*

*Golden Gates Community Foundation*

*Lloyd Bond School*

*Larry Hawkins School*

*TCA Health, Inc.*

*People for Community Recovery*

*Peters Rock Church*

*Prologue Schools*

*Riverside Village*

*Roseland Cease Fire Project*

*Safety Transportation Advisory Council*

*SGA Youth and Family Services*

*Social IMPACT Research Center*

*Youth Guidance*

and resident focus groups, the evaluation focuses primarily on the ARC's first goal. The research questions are as follows:

1. Has resident perception of safety and crime changed as a result of the ARC's work in the community?
2. Have crime patterns changed during the ARC's involvement in Altgeld-Riverdale community (which began in 2008 and was expanded in 2013)?



## 2. 2014 ARC ACTIVITIES

In 2014, the ARC continued much of its work from 2013. The individual work of each of the partners continued in 2014, as well as the ARC's joint efforts, discussed in turn below: community engagement and communication, monthly member meetings (referred to as ARC Forums in 2013), and community events (resident-driven safety initiatives).

### 2.1 ARC Community Engagement and Communication

The ARC Coordinator conducts the majority of member and community outreach communications by sending out quarterly newsletters, monthly invitations to ARC meetings, and regular posts to the Community Beat (an online community web portal run by the community and for the community; described more fully in prior report, p.25). Newsletters give an overview of ARC-hosted community events from the past quarter and highlight upcoming events. They include photos from events and information on the ARC. Community Beat posts serve a similar purpose but are more current and are updated on an ongoing basis. Community partners are also able to submit posts to the Community Beat. In 2014, there were 700 total newsletters distributed, and there were 26 posts to the community beat website and/or calendar.

### 2.2 ARC Meetings

The ARC holds monthly meetings that allow partner organizations to discuss progress toward the ARC's goals and challenges they are facing. The meetings also allow for planning, collaborating, and sharing information about community events, resources, and any issues in the community. Partners also used this convening time to further organize the ARC's structure and leadership.

In 2014, meetings generally had strong representation from partner organizations, but did not consistently have strong resident representation. Resident representation ranged anywhere from about half of the meeting's attendees to only one resident in attendance. Throughout the early summer months when most community activities were being planned, there was stronger resident representation. Meetings were held in public spaces throughout the community and were facilitated by either the ARC Coordinator or another ARC partner organization leader.

Most meetings focused on updating each other on activities and planning the development of the group. However, in late summer, shootings within the community became an important focus of discussion. Residents and partner organization leaders talked through the challenges of the violence in the community and relations with the police department. Representatives from the police department attended meetings and discussed some of the events that

had occurred, but there was still concern around controlling the tension in the community.

In addition to the ARC community meetings, smaller, more issue-focused meetings were also held. For example, members interested in developing the leadership structure met to solidify that plan. Members of the Altgeld Riverdale Early Learning Coalition also regularly met to do more focused work, and ARC members interested in developing a neighborhood youth council met to discuss that work.

For more detailed information about ARC meetings, see Appendix D.

### **2.3 Community Events**

There were many events throughout 2014 that the ARC and/or its partners held. The events focused on building community and increasing safety. The themes varied from water safety to addressing gun violence. Individual events had anywhere from 10 to 500 attendees and were hosted by various community partner organizations. In total, the ARC held 17 resident-driven community safety events with over 2,200 instances of attendance. (Many likely attended multiple events, so they are duplicated in this count. While there is a core group of community members who are very active with the ARC and regularly attend the various events hosted throughout the area, this number also includes the many additional residents who attended at least one event.)

Appendix E gives a brief description and estimate of attendance for each event held through the end of 2014.

### 3. ARC'S IMPACT ON FEELINGS OF SAFETY IN THE COMMUNITY

#### RESEARCH QUESTION #1

*Has resident perception of safety and crime changed as a result of the ARC's work in the community?*

Based on analysis of survey data and suggestions from residents in focus groups, the ARC's work in the community has positively impacted resident perception of safety, and the ARC is doing the kind of work that residents believe will continue to improve safety in the community.

Improving community safety is one of the ARC's three goals. Community safety is a multi-faceted concept that includes things as wide ranging as how safe people feel and criminal activity levels. These dimensions of safety are obviously related, but not necessarily in a lock-step manner. Furthermore, when residents' feelings of safety change or crime changes, it's difficult to attribute those changes to the ARC's work and ARC's work alone, for the community is influenced by many other factors both near home and farther away.

This is all to say that measuring the ARC's influence on community safety is a challenging effort, but an important effort nonetheless. Since community safety is so multi-faceted, this evaluation measures several different facets in a number of different ways:

- 99 attendees at ARC events completed a questionnaire about safety.
- 42 community residents participated in one of four focus groups focused on safety.
- The evaluators analyzed crime statistics from the Chicago Police Department.

This chapter focuses on the ARC's impact on feelings of safety, and the best information to understand this change comes from the first two methods—the safety questionnaire and the focus groups. In both instances, residents reflected on their feelings of safety and explained how the ARC's work had helped change those feelings. Community members were also asked about safety issues and for suggestions for increasing community safety, particularly activities that the ARC could help to facilitate.

For some of the more in-depth analysis, the 2013 and 2014 survey data were analyzed together to produce more reliable estimates because the ARC only collected 99 surveys from events in 2014, from only 4 events (compared with 370 surveys from approximately 10 events in 2013). We also did not find substantial differences between 2013 and 2014 data, so we only present analysis of both years' combined data.

We present data in this section in as much detail as possible. Where data are quantifiable (generally, survey questions that can be clearly analyzed), we provide the breakdown of that data. Much of the context and explanation behind those data summarized in this section come from written-in responses and the rich qualitative data gathered in focus groups, as well as from ARC meeting observations. Qualitative data were coded to find themes and are summarized here.

### 3.1 Safety in the Community

When it comes to how safe residents feel in their community, there appears to be a wide range of different feelings from feeling very safe in the community to very unsafe and everything in between. More residents report feeling safe in their homes (76%) than out in the neighborhood (55%) or traveling (62%). Only about half (49%) felt safe with their children or young relatives traveling around the neighborhood.

***Some of the most common safety concerns cited by community members in both 2013 and 2014 revolve around guns and shootings in the neighborhood.***

Some of the most common safety concerns cited by community members in both 2013 and 2014 revolve around guns and shootings in the neighborhood. There is also a great deal of concern around violence in general—being jumped, people fighting, or bullying and intimidation of youth. Many residents also worry about gang activity and drug dealing. Other crimes like break-ins and burglaries were mentioned as concerns, as well as environmental concerns, such as abandoned buildings and lots, speeding cars, and not enough lights.

Many residents were also concerned about the safety and well-being of seniors, many of whom they explained were scared to leave their homes. Another issue that many people brought up was around youth: a lack of parental engagement and cooperation or feeling of community with other parents, combined with a lack of safe activities for youth, have led many community members to both be fearful of and fearful for the young people in the community. Generally, compared with older residents, younger community members feel less safe in the community and feel that the police do not have a good relationship with the community.

Community members appear to have very complicated feelings toward the police. Most survey respondents thought that the police did not have a good relationship with people in their neighborhood (70%). While some residents feel that there should be much more police presence in the neighborhood, others feel that they can't trust the police. Some residents held both conflicting views, feeling torn about what could really help reduce crime. While they feel that more police could help, they also cited numerous incidents they had either witnessed or encountered themselves that deteriorated their trust in the police.

For many, trust in, or their feelings about, the police hinged on the police's interaction with community residents. Many felt that the police did not interact with the community much at all, and they therefore did not think the community had a good relationship with the police. The opposite was true as well—people who saw police interacting with community members felt that the community and police had a better relationship.

Others were just concerned with whether the police were enforcing the law: those who viewed the police as enforcing the law had positive feelings about the police, but those who felt that the police were not enforcing the law felt there was not a good relationship with the community. Residents reported witnessing

police not enforcing the community's curfew when there were children still out, not stopping fights that they saw happening, and taking too long to come when called in an emergency. Residents also mentioned on multiple occasions that when they make anonymous calls, they are not in fact anonymous—police come to the door of the home that called, so any protection that anonymity could have offered is gone. Some residents said they do not call for that reason.

Some residents had an even more negative view of police/community relations, actually viewing the police as a threat to the community. In both 2013 and 2014, some residents described the police presence as a negative in the community. This sentiment was shared in open-ended responses to survey questions at safety events, as well as in focus groups. Some view the police as corrupt and taking advantage of their power. Other residents mentioned profiling and mistreatment around arresting people “and asking questions later.” It is clear that there is a deep mistrust of police for many community members for a variety of reasons.

This issue impacted much of the ARC's work. One monthly ARC meeting in particular ended up shifting its primary focus to the community's relationship with the police after an incident occurred where an armed resident was shot and killed by a police officer. This occurred in the same summer as the community clash with police in Ferguson, Missouri, over the shooting of teenager Michael Brown, which garnered national attention. This climate increased tensions in the community, and ARC members felt pressure to help reduce that tension to help keep everyone safe. Representatives from the Chicago Police Department attended the monthly ARC meeting to discuss the situation, but it is unclear what additional next steps were taken on their part after the conversation. The ARC sponsored a “Village Take Back” community-based peace rally and march in response to the police violence taking place in the community. The event was hosted by the Altgeld Local Advisory Council and was part of a city-wide initiative to stop the violence.

***In both 2013 and 2014, the majority of respondents believed that ARC events helped increase safety in their neighborhood.***

### **3.2 Impact of ARC's work on Feelings of Community Safety**

Community members who attended ARC community events generally found them to be effective and helpful. The majority of respondents (77%) believed that ARC events such as the one they attended helped increase safety in their neighborhood, and the majority (94%) would recommend the event to someone else in their neighborhood. The majority (72%) also felt more aware of resources related to safety in the neighborhood after the event. Most respondents (76%) felt they were more likely to use resources and organizations addressing safety in the neighborhood and felt they were more likely to collaborate with others in the neighborhood on initiatives to increase safety after the event. Additionally, the majority (69%) felt more prepared to act, to avoid, or prevent an unsafe situation after the event.

***When ARC members explained the ARC's work, other residents agreed that those activities were needed in the community, but felt that efforts either needed to be expanded or outreach needed to be better so that more residents could participate.***

The majority of respondents felt that the ARC event that they attended was educational and assisted them in being more likely to respond in unsafe situations, but slightly fewer respondents in 2014 expressed feeling that the event informed them and prepared them to take action to increase safety in their community, as compared to 2013.

Many residents who were not as heavily involved in the ARC's work were not aware of what the ARC had done in the community or that some of the ARC's events were in fact hosted by the ARC. Since they were largely unaware of the ARC's efforts, they could not comment on how they impacted their feelings of safety. When ARC members explained the ARC's work, other residents agreed that those activities were needed in the community, but felt that efforts either needed to be expanded or outreach needed to be better so that more residents could participate.

### **3.3 Community Recommendations for ARC**

Riverdale community members have many ideas for ways to improve safety in the community. Most suggestions stem directly and logically from the cited community safety concerns. Residents noted that the community lacks resources like activities for youth. They felt that the community needs more afterschool programming and activities for days when school is closed. They also worried about children getting safely from place to place, so suggested more Safe Paths (e.g., more patrollers, additional routes). Job training and additional educational opportunities for young adults was also suggested.

Not all suggestions revolved around youth—a lack of jobs was identified as another root cause of community violence, so educational and training opportunities, as well as more job opportunities, were noted as important things that would reduce crime in the neighborhood. Residents also felt that there should be more police, better communication with police, or improved law enforcement (more strict enforcement of rules like curfew, but also more respectful treatment of residents when incidents occur).

Some community members also felt that there should be better security measures in place, like brighter lights, more cameras, and a neighborhood watch. Many expressed the perception that the security company in place is only employed to secure CHA property, not to ensure the safety of residents. They also mentioned incidents when security cameras were not functioning properly or did not deter crime. They felt that there could be much better measures in place.

Residents also had many suggestions for community-building activities or events that they felt would help to improve safety. They felt that more block parties, barbecues, or a neighborhood circus could be fun community-building events. They felt more community engagement and cooperation was needed to reduce crime and violence.

Some of these suggestions are beyond the ARC's current ability and others are creative new ideas that the ARC could use, but still others are things that the ARC are already doing. Most residents who were not engaged or involved in the ARC's work did not know what the ARC was or what they do. They suggested additional outreach efforts with clear reading materials, such as a brochure, to explain the group. They thought that posting more flyers in doors and in high-traffic areas, like grocery stores, might help increase awareness and visibility. More information at ARC community events about the ARC may also help with awareness and help people get involved.

## 4. ARC'S IMPACT ON CRIME OCCURRENCES IN THE COMMUNITY

### RESEARCH QUESTION #2

*Have crime patterns changed during the ARC's involvement in the Altgeld-Riverdale community (2008 and 2013, when efforts were expanded)?*

There have not been major shifts in crime around 2008 or 2013. With the myriad factors impacting crime in the community, it is nearly impossible to know the ARC's true impact on crime and safety, but crime data do not bear out any drastic changes since the ARC started or expanded its work.

### CRIME DATA

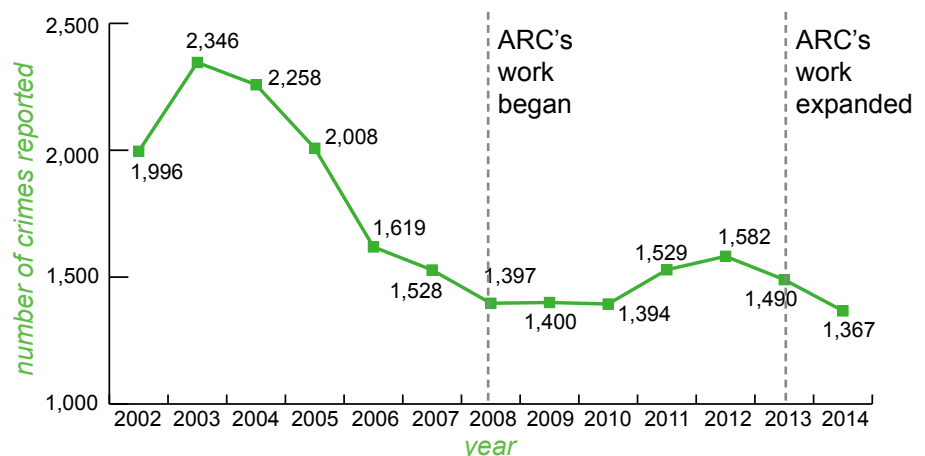
Crime analysis is based on data from the City of Chicago's open data portal, which is extracted from the Chicago Police Department's CLEAR (Citizen Law Enforcement Analysis and Reporting) system.

There are innumerable factors that play into crime levels in any community. It would be nearly impossible to control for the myriad variables affecting community crime to be able to definitively state the impact of one partnership's work. Still, tracking crime trends from before and since the ARC's involvement in the community helps paint a picture of the environment within which it exists and works and also helps begin to illuminate the initiative's impact on the broader problem of crime. Here we examine those crime trends to try to understand the ARC's impact on the community, as we outlined in the previous chapter.

#### 4.1 Change in Neighborhood Crime

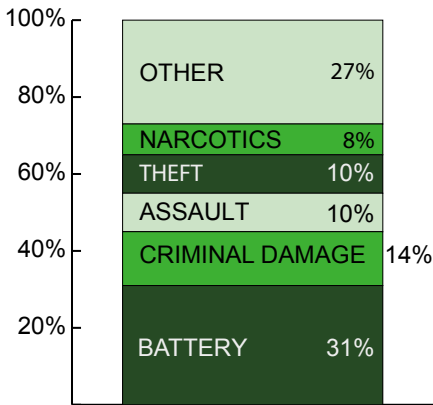
To understand the crime trends at work in the Riverdale area and to establish a solid baseline, evaluators looked back over the past 12 years to 2002—the earliest year for which data are publicly available. The number of reported crimes in the community peaked in 2003 at 2,346 crime incidents. Since 2003, reported crime incidents declined every year until 2008, when they appeared to level out before slowly rising again between 2010 and 2011, peaking again in 2012, but at a much lower number of 1,582 incidents (Figure 1). Crime then went down again between 2012 and 2014, with a total of 1,367 reported crimes in 2014. Since the ARC's work expanded in 2013, there has been a reduction in total crimes reported.

Figure 1. Total Crimes in Riverdale, 2002-2014



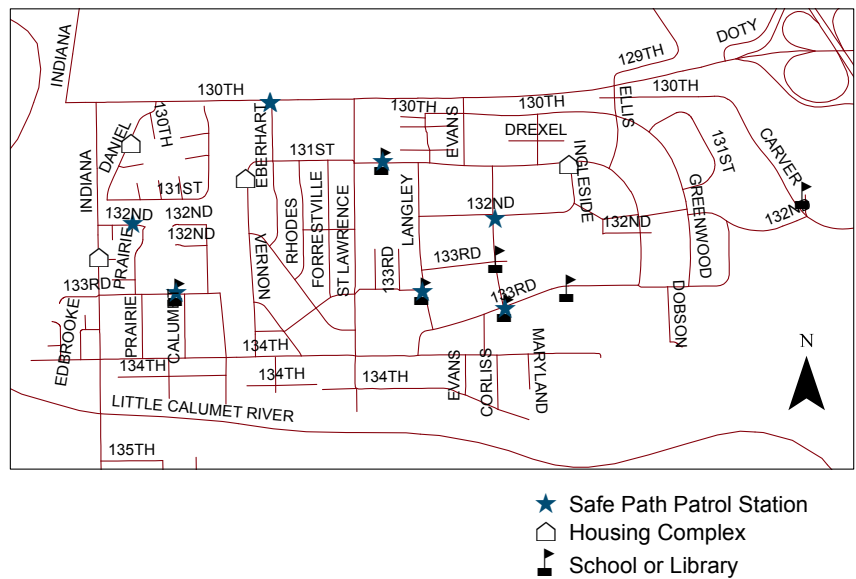


**Figure 2. Most commonly reported crime types, 2002-2014**



Between 2002 and 2014, battery has consistently been the most common type of crime incident, making up anywhere from 26% to 36% of all crimes in Riverdale. Criminal damage is consistently the second most common crime type, making up 12% to 17% of all crimes. Assault and theft are the next most common crime types, each making up 10% of crimes on average between 2001 and 2014. Figure 2 highlights the top five reported crime incidents in the Riverdale community between 2002 and 2014. Though numbers have changed, the most common crime types have remained relatively consistent.

**Figure 3. ARC Community**



*Data note: Crime data analyzed in this report are from the entire Riverdale Community Area (one of the 77 Chicago Community Areas), but ARC’s work focuses on the geographic area shown in the map in Figure 3; this geography is explained in further detail in the prior report.)*

**Arrests**

Not all reported crime incidents result in an arrest, so examining arrest rates helps give a fuller picture of crime and enforcement. Over the past decade or so, the percent of incidents in Riverdale that resulted in an arrest ranged between 21% and 28%. In 2003, when reported crime numbers were high, 28% of those incidents resulted in arrest. In 2008, when numbers were much lower, 22% resulted in arrest. In 2013, 25% resulted in arrest, and in 2014, 27% resulted in arrest.

The likelihood of arrest for different crime types varies quite a bit. For example, only 5% of burglaries resulted in arrest between 2002 and 2014, but 95% of narcotics crimes resulted in arrests (Figure 4). Only about one in five incidents of assault or battery result in arrest and less than one in ten criminal damage incidents resulted in arrest while nearly three quarters of criminal trespass did. Very small percentages of theft, robbery, and motor vehicle theft incidents

resulted in arrest. Some of these drastic differences are likely due to reporting method. Though there are not data on this, it seems logical to assume that theft and robbery incidents were reported by the victim, and that the perpetrator was not caught at the time that crime was reported. For other crimes, such as criminal trespass crimes, we can assume that the person trespassing was caught in the act, so an arrest was made.

Different types of crime do not result in the same arrest rates, and the crimes that are most likely to result in arrest have changed somewhat over the years. Between 2002 and 2014, crimes with the greatest share of arrests include those related to narcotics (33%), battery (26%), and criminal trespass (10%; Figure 5). Over that same time span, the largest number of crime incidents and arrests related to narcotics crimes were for possession of 30 grams or less of cannabis (45% of all narcotics arrests). One of the most notable changes over time was in 2013, when criminal trespass incidents made up 24% of arrests, where it previously had only made up anywhere from 6% to 12% of arrests.

**Figure 4. Crime types most likely to result in arrest in Riverdale community**

Crime type	Arrest rate
Obscenity*	100%
Prostitution*	100%
Public indecency*	100%
Gambling	95%
Narcotics	95%
Liquor law violation	92%
Interference with public officer	91%
Weapons violation	89%
Criminal trespass	72%
Public peace violation	63%

*\*Very small number of occurrences*

**Figure 5. Crime types making up most arrests in Riverdale community**

Crime type	% of all arrests
Narcotics	33%
Battery	26%
Criminal trespass	10%
Assault	8%
Weapons violation	5%
Criminal damage	4%
Other offense	3%
Theft	2%
Public peace violation	1%
Robbery	1%

***Though the number of reported crimes has gone down since 2003 in Riverdale and in Chicago as a whole, Riverdale has very high crime rates in comparison with other Chicago neighborhoods.***

## **Location**

Incidences of crime can vary considerably by location even within a small geographic area like a single city neighborhood. Understanding more specifically where crime occurs within Riverdale helps identify more targeted areas for crime prevention efforts. Looking at the most common types of reported crimes since 2002, we can note where crime most often takes place. Battery, the most common type of crime, was most often reported in people's homes (43%; CHA apartments, residences or other apartments, as coded by the Chicago Police data system) and CHA parking lots or grounds (21%). Criminal damage was also most commonly reported at people's homes (53%). Assault, like battery, was most often reported in people's homes or CHA parking lots or grounds (34% and 24%, respectively). Theft was most commonly reported in or around people's homes (38%) or on the street (19%). Narcotics crime incidents were most commonly reported in public places like CHA parking lots or grounds or on the street or sidewalk (87%).

It is also important to note that a large percentage of some crime incidents were categorized as domestic crimes. For instance, 21% of assault incidents were domestic crimes, and 41% of battery incidents were domestic. Over half (59%) of offenses involving children were domestic, and nearly a quarter (24%) of kidnapping cases were domestic. This is noteworthy when planning community responses to violence—domestic violence may require a different approach than other kinds of community violence.

## **Crime Rates**

Though the number of reported crimes has gone down since 2003 in Riverdale and in Chicago as a whole, Riverdale has very high crime rates in comparison with other Chicago neighborhoods (also called Chicago Community Areas or CCAs). In 2012, 2013, and 2014, the Riverdale community has had the 11th highest overall crime rate among all 77 CCAs, up from the 14th highest crime rate in 2011 (Figure 6). And while assault is only the 3rd or 4th most reported crime in Riverdale between 2011 and 2014, Riverdale had the highest crime rate for assault in 2011 and 2012, the 4th highest on 2013, and the 3rd highest in 2014.

Over the past few years, the Riverdale community has had one of the highest crime rates in the city for a number of different specific crime types. For example:

- Riverdale's crime rate for battery was the 2nd highest in 2014, and was the 3rd highest in 2012 and 2013.
- In 2012, Riverdale had the highest rate of sex offenses and criminal sexual assault.
- In 2014, Riverdale had the highest rate of weapons violations.

- In 2013, Riverdale had...
  - the 2nd highest homicide rate
  - the 2nd highest rate of criminal damage
  - the 3rd highest rate of criminal trespass

These high rates in comparison with other Chicago neighborhoods show that though the *number of crimes* has gone down over the past decade, Riverdale is still one of the city's most crime-impacted neighborhoods.

**Figure 6. Crime rate ranking for Riverdale among all 77 Chicago Community Areas (1=highest, or worst, rate)**

Crime type	2011	2012	2013	2014
Arson	69	4	4	11
Assault	1	1	4	3
Battery	4	3	3	2
Burglary	17	18	23	19
Criminal sexual assault	2	1	4	23
Criminal damage	5	4	2	3
Criminal trespass	9	7	3	3
Homicide	5	15	2	8
Motor vehicle theft	39	36	28	24
Narcotics	26	21	24	19
Offense involving children	12	14	12	7
Robbery	16	26	20	22
Sex offense	47	1	3	16
Weapons violation	10	11	21	1
Overall Crime Rate Ranking	14	11	11	11

#### 4.2 Neighborhood Crime Hot Spots—Change Over Time

Understanding the prevalence of crime and types of crime is essential, but in order to better prevent crime, it is also very important to know quite specifically where the crimes are happening in the neighborhood. A spatial statistical analysis of crime hot spots within the community show that the most common locations where crimes were reported changed somewhat over the years.

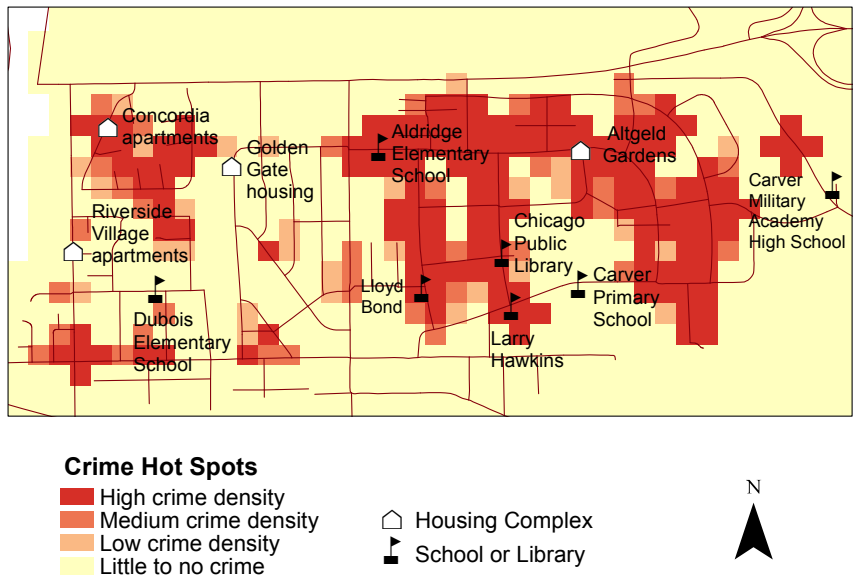
Maps of these crime hot spots, as can be seen in Appendix F, show that in 2002 and 2003, when crime numbers were very high, that crime incidents were mostly concentrated in the central and eastern region of the community (from around St. Lawrence all the way west to around Greenwood; 2003 hot spots shown in Figure 7). Between 2005 and 2009, the highest concentrations shift westward in the community (from Indiana to S. King Drive, but also a concentration from

## HOT SPOT ANALYSIS

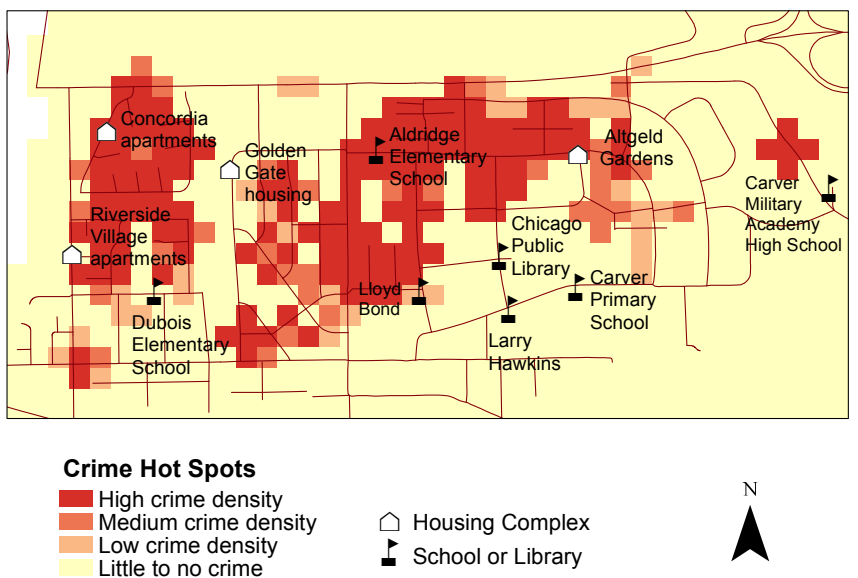
Though no common definition of the term hot spot of crime exists, the common understanding is that a hot spot is an area that has a greater than average number of criminal or disorder events, or an area where people have a higher than average risk of victimization. We have used mapping software to analyze and visually represent statistically significant clusters of crime incidents. Further details can be found in the methodology appendix.

Vernon westward to Ingleside or Ellis in 2009; 2009 hot spots shown in Figure 8). Then in 2010, the hot spots shift back eastward toward the center and east side of the community (Vernon westward to Ellis). In 2014, crime hot spots are seen both in the center and on the west side of the Riverdale community (from Indiana to S. King Drive and a concentration from Corliss westward to Forrestville, and more to the east between Ellis and Greenwood; Figure 9).

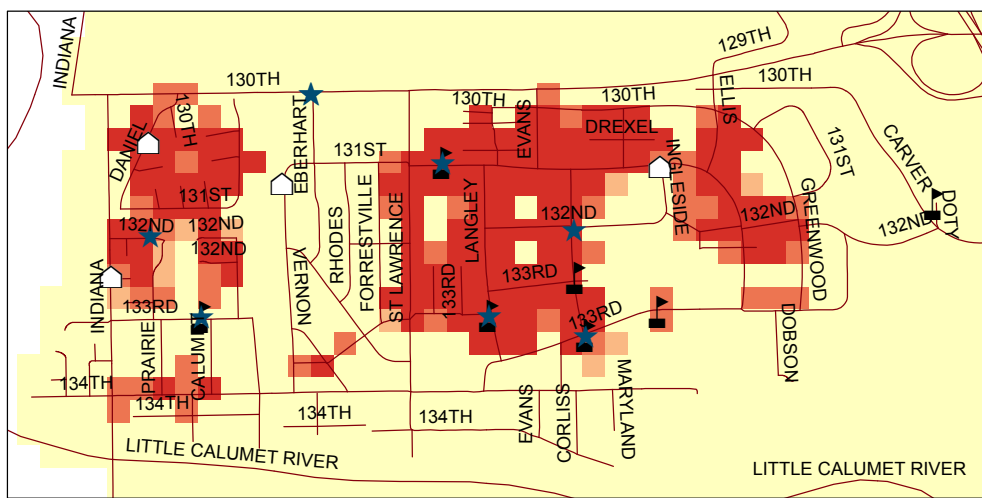
**Figure 7. 2003 Crime Hot Spots**



**Figure 8. 2009 Crime Hot Spots**



**Figure 9. 2014 Crime Hot Spots**



**Crime Hot Spots**

- High crime density
- Medium crime density
- Low crime density
- Little to no crime

- ★ Safe Path Patrol Station
- Housing Complex
- School or Library



From the maps, we can also observe that Safe Path Patrolers are often stationed in the heart of these crime hot spots. While hot spots generally have not dissipated or shifted away from these patrol stations, it is obvious that they are serving a very serious need. Since patrolers are generally only stationed for a few hours every morning and afternoon, it is likely that incidents are occurring when they are not on duty. Nevertheless, the hot spot maps illustrate the importance of having patrolers stationed at these locations.

Seeing these shifts in more crime-dense areas can, in theory, help the ARC to focus crime-prevention efforts in the areas where concentrations appear to be moving. For example, adding more Safe Path workers to blocks identified as hot spots or bringing more Ceasefire workers into that area could help to quell crime. However, assessing the direct impact of the ARC’s efforts on the changes in crime hot spots is challenging at best. Safe Path and Ceasefire workers are mobile and though they may have specific posts or areas to patrol, they are only there during certain hours and likely move between posts in order to escort residents or assist wherever they are needed. Additionally, since hot spots cover large swaths of the neighborhood, it would be challenging to hone in on specific locations to try to prevent additional crimes.

That is not to say that Safe Path and Ceasefire workers are not effective or helpful in the community. These efforts likely help to improve residents’ feelings of safety in the neighborhood, but the data do not show that they are making any significant impact on crime rates overall or on the dissipation of crime hot spots in general. According to crime hot spot analysis theory, crime at the multi-block neighborhood level like this generally points to more systemic, economic, or social causes and solutions. This supports many of the residents’ suggestions for investment in youth activities, jobs and training for adults, and the like.

## 5. CONCLUSION

***Community sentiment generally calls for more of what the ARC is already doing or striving to do.***

In its 6 year history in the Altgeld-Riverdale community and in the 2 years since these evaluation efforts have been underway, the ARC has made some very important and tangible contributions to how the community reacts to crime and violence and to how ARC-involved residents feel about their personal safety. Nonetheless, the neighborhood's challenges have had decades to take hold, and the ARC's relatively short existence in the community can't reasonably be expected to dramatically revert trends. Crime and violence continue to be pressing issues for the Altgeld-Riverdale community. Community sentiment generally calls for more of what the ARC is already doing or striving to do. Residents who took part in ARC events feel safer and more prepared, and even residents who had not heard of the ARC before agreed that such an organization is needed in the community. The continued work of the ARC will be an important contributor to increasing safety in the Riverdale community.

As with any research, this evaluation has its limitations; the evaluators attempted to mitigate them whenever possible. As noted previously, assessing the ARC's direct impact on crime is essentially a flawed effort by design—there are so many factors that play into community crime and violence that it should not be assumed that any anti-violence program is not a success based solely on crime data. We address this issue by also including information about the ARC's impact on feelings and perceptions of safety, which illustrate the important work they are doing to engage the community in improving safety. And certainly, coalition- and community-building is a long road. With the ARC's relatively short history (in its current form), it would be unreasonable to expect dramatic shifts in crime rates or even notable shifts in perception of safety. But the ARC's patient work bringing together social service agencies, residents, police, and community leaders to address safety issues is laying a solid foundation for making the necessary changes to substantially improve safety.

### 5.1 Recommendations Moving Forward

#### **Strengthen Community Outreach and Communications**

The ARC's first goal, and the one evaluated in this report, was to improve and strengthen community safety. However, another of the ARC's original goals was to create vehicles for consistent communication, which is related to the first goal and a way by which community safety can be improved. The group has made great strides in this area, but there is still much more that can be done. Residents are generally unaware of the ARC's work or how they can be involved. It would be helpful to have literature available, such a brochure, to give a clear explanation of the ARC's goals, activities, and key accomplishments. It would also likely be helpful to create a brand for the ARC—with a logo and brief description of the group; this would make the group more recognizable in the

community and help in any outreach efforts. The ARC should design a clear brand and use that to create literature for easier community outreach. Increasing awareness of the ARC and its activities among residents is key to facilitating the ARC's accomplishment of any of its other goals.

### **Strengthen Community Relations with Police**

Members of the Altgeld-Riverdale community have a complicated relationship with the police. This makes any efforts toward reducing crime and improving safety much more difficult. While some of the ARC's work is likely helping to improve the relationship (through CPD's involvement in the ARC's work through the G.R.E.A.T. program and other ARC activities such as Block Party meet and greets with the police), it is clear that there is still a very strained relationship between the community and the police. There is an opportunity for the ARC to take on a bigger role in this issue. The ARC already has relationships both within the community and with members of the Chicago Police Department and could make a more concerted effort to bridge the gap and help to improve relations. To do this, the ARC could first investigate the extent of the issue by gathering community input and looking into steps that can be taken with the CPD to give them the community's feedback and help the CDP plan to address it.

### **Advocate for Community Resources**

The ARC has done a great deal to strengthen the community with the resources available to them, but feedback from residents has made it very clear that much more is needed to make a substantial impact on the community. Residents have voiced the need for things like more afterschool programs, activities for kids on weekends and evenings, job training, job opportunities or broad scale employment programs for adults, and other resources for families within the community. Much of this is beyond the ARC's capacity to directly provide those services, but the ARC does have the capacity to bring the community's voices together in a more concerted advocacy effort. These investments would help improve community safety.

### **Continue or Expand Current Efforts**

The ARC's events and activities have a positive impact on residents' feelings of safety in their community. Residents agree that the community needs a group like the ARC to continue working to build community safety. They also suggested events and activities similar to what the ARC has been doing over the past year and voiced interest in being more involved in the future. The ARC should continue to host events and activities that both directly address safety issues in the community and that build community in the neighborhood by giving residents safe spaces to get to know their neighbors. The ARC could also expand efforts by inviting new partners to get involved in the effort. Since there appears to be a significant amount of domestic abuse, pulling in a domestic violence prevention service provider could be beneficial. It may also be advantageous to include

## **Recommendations Moving Forward:**

***Strengthen Community  
Outreach and  
Communications***

***Strengthen Community  
Relations with Police***

***Advocate for Community  
Resources***

***Continue or Expand  
Current Efforts***

***Continue Research and  
Evaluation***



a legal aid provider, as many crime victims and alleged perpetrators are likely struggling with court and legal systems.

### **Continue Research and Evaluation**

Moving forward, there are many things the ARC can do to continue to strengthen their work. As part of that effort, research and evaluation can play a key role in not only assessing progress but informing improvements and changes in the ARC's work. Depending on the direction the ARC decides to focus or expand its work, research could be done around best practices and most effective methods to reach that specific goal. For example, a deeper assessment of the ARC's communication and outreach efforts may help the group make strides toward that goal. More focused research could be done on the relationship between police and the community. It would be instructive to assess the relationship from both the community's and the police's perspective. Next steps in this research could also more deeply explore residents' personal experiences with crime in the community. Having this deeper understanding could help efforts to improve safety.

# APPENDIX A: METHODS

## Data Sources & Analysis Methods

Data analyzed and presented in this report come from three main sources: safety surveys, focus groups, and Chicago crime data. More information about these data sources and the analysis methods used are included here.

### 1. Safety Survey

In 2013, the Social IMPACT Research Center designed surveys to measure the impact of ARC events on residents' perceptions and feeling of safety in their community. These surveys were distributed and collected at ARC events by the Project Coordinator and community outreach workers. Surveys were then transferred to IMPACT, where we entered all data into a spreadsheet and analyzed the data in SPSS, focusing on basic descriptives. A copy of the safety survey is in Appendix B.

### 2. Focus Groups

Following similar protocol as 2013 focus groups, the Social IMPACT Research Center conducted a series of focus groups with community residents. A total of four focus groups were conducted on Saturday, September 13 and on Saturday, September 20. Two of the focus groups were held with residents who have been engaged with the ARC, meaning they had been to a meeting, received emails from the ARC, etc. The other two focus groups were with residents who were not already engaged with the ARC, meaning they might have heard of the ARC but had never taken part in any ARC-related meetings or activities. The focus groups were each two hours long and were held at the Community Youth Center (CYC) building at Altgeld Gardens. All focus group participants were compensated for their time in the form of a \$50 gift card.

In order to recruit participants for the focus groups, an ambassador strategy was utilized. With the help of the ARC coordinator, four residents—one for each focus group—were selected to do outreach and recruit individuals from the community to participate. Ambassadors received a \$50 gift card for their own participation in a focus group and an additional \$10 gift card for every community resident they recruited that showed up and participated.

Data collected from the focus groups were coded for general themes and summarized by issue area. A list of focus group questions is in Appendix C.

### 3. Chicago crime data (additional maps included in Appendix F)

Chicago crime data come from the Chicago Police Department's CLEAR

(Citizen Law Enforcement Analysis and Reporting) system, via Chicago Data Portal.

- To analyze crime totals, we ran calculations and cross-tab calculations on crime data that provided basic counts of different crimes by date and geography.
- To analyze crime rates and compare Riverdale's rates with other community areas, we also utilized analysis of the U.S. Census Bureau's 2008-2012 American Community Survey 5-year estimates program. We calculated rates based on reported crime incidents and community area population estimates.
- To analyze crime hot spots, we used ArcGIS software to conduct statistical analysis of crime clusters by year and crime type. ArcGIS's hot spot analysis function uses Z score and P value to assess statistically significant clusters, or hot spots.

## APPENDIX B: SAFETY SURVEY

FOR OFFICE USE ONLY date: \_\_\_\_\_ event name: \_\_\_\_\_

### **Please complete this short survey about the event you just attended.**

This event was organized by a group of community organizations and residents called the Altgeld-Riverdale Consortium or ARC. Your feedback will help ARC understand the impact of this event and how to improve events like this in the future.

Please do NOT put your name on this survey. Your responses are private and confidential.

If you have any questions about this survey, please contact Lindy Carrow, the researcher from the Social IMPACT Research Center who is working with ARC, at 312-870-4957 or [lcarrow@heartlandalliance.org](mailto:lcarrow@heartlandalliance.org).

*This project was supported by Grant # 2009-DJ-BX-0023, awarded by the Bureau of Justice Assistance, Office of Justice Programs, U.S. Department of Justice, through the Illinois Criminal Justice Information Authority. Points of view or opinions contained within this document are those of the author and do not necessarily represent the official position or policies of the U.S. Department of Justice, or the Illinois Criminal Justice Information Authority.*

*This page was intentionally left blank*

*This first set of questions is about how you feel in general about safety.*

**1. I feel safe in my neighborhood.**

- Strongly agree<sub>1</sub>
- Agree<sub>2</sub>
- Undecided<sub>3</sub>
- Disagree<sub>4</sub>
- Strongly disagree<sub>5</sub>

**2. I feel safe in my home.**

- Strongly agree<sub>1</sub>
- Agree<sub>2</sub>
- Undecided<sub>3</sub>
- Disagree<sub>4</sub>
- Strongly disagree<sub>5</sub>

**3. I feel safe traveling to and from school, work, and other places I have to go regularly.**

- Strongly agree<sub>1</sub>
- Agree<sub>2</sub>
- Undecided<sub>3</sub>
- Disagree<sub>4</sub>
- Strongly disagree<sub>5</sub>

**4. I feel safe with my children or young relatives (cousins, nieces, nephews) traveling about in my neighborhood.**

- Strongly agree<sub>1</sub>
- Agree<sub>2</sub>
- Undecided<sub>3</sub>
- Disagree<sub>4</sub>
- Strongly disagree<sub>5</sub>

**5. If you do not feel safe traveling or letting children travel about in your neighborhood, explain why.**

**6. What do you think is the most important safety concern in your neighborhood? Be as specific as possible.**

**7. List 3 things (specific changes, resources, or programs) you think would MOST improve safety in your neighborhood.**

**8. Do you think the police have a good relationship with people in your neighborhood?**

- Yes<sub>1</sub>
- No<sub>2</sub>
- Unsure<sub>3</sub>

**9. Please explain why you feel this way.**

-continued-

p. 3 of 6

*This next set of questions is specific to how you feel about today's event.*

**10. How did you learn about today's event?**

- I am an ARC member<sub>1</sub>
- Newsletter<sub>2</sub>
- Community calendar<sub>3</sub>
- Word of mouth<sub>4</sub>
- Other (describe):<sub>5</sub> \_\_\_\_\_

**11. Have you attended an ARC event before?**

- Yes<sub>1</sub>
- No<sub>2</sub>
- Unsure<sub>3</sub>

**12. What are the top 1 or 2 things you learned or will take away from today's event?**

**13. I am satisfied with the time of day/week this event was offered.**

- Strongly agree<sub>1</sub>
- Agree<sub>2</sub>
- Undecided<sub>3</sub>
- Disagree<sub>4</sub>
- Strongly disagree<sub>5</sub>

**14. I am satisfied with the location of this event.**

- Strongly agree<sub>1</sub>
- Agree<sub>2</sub>
- Undecided<sub>3</sub>
- Disagree<sub>4</sub>
- Strongly disagree<sub>5</sub>

**15. I feel more prepared to avoid or prevent an unsafe situation now than I did before attending today's event.**

- Strongly agree<sub>1</sub>
- Agree<sub>2</sub>
- Undecided<sub>3</sub>
- Disagree<sub>4</sub>
- Strongly disagree<sub>5</sub>

**16. I feel more prepared to act when confronted with an unsafe situation now than I did before attending today's event.**

- Strongly agree<sub>1</sub>
- Agree<sub>2</sub>
- Undecided<sub>3</sub>
- Disagree<sub>4</sub>
- Strongly disagree<sub>5</sub>

**17. I am more aware of resources related to safety in my neighborhood now than I was before attending today's event.**

- Strongly agree<sub>1</sub>
- Agree<sub>2</sub>
- Undecided<sub>3</sub>
- Disagree<sub>4</sub>
- Strongly disagree<sub>5</sub>

**18. I am more likely to use resources and organizations addressing safety in my neighborhood now than I was before attending today's event.**

- Strongly agree<sub>1</sub>
- Agree<sub>2</sub>
- Undecided<sub>3</sub>
- Disagree<sub>4</sub>
- Strongly disagree<sub>5</sub>

**19. I am more likely to collaborate with others in my neighborhood on initiatives to increase safety now than I was before attending today's event.**

- Strongly agree<sub>1</sub>
- Agree<sub>2</sub>
- Undecided<sub>3</sub>
- Disagree<sub>4</sub>
- Strongly disagree<sub>5</sub>

**20. I think events like this are effective at helping to make the neighborhood safer.**

- Strongly agree<sub>1</sub>
- Agree<sub>2</sub>
- Undecided<sub>3</sub>
- Disagree<sub>4</sub>
- Strongly disagree<sub>5</sub>

**21. Would you recommend today's event to other people in your neighborhood?**

- Yes<sub>1</sub>
- No<sub>2</sub>

**22. Why or why not?**

*These last questions will help us understand a little about who attended today's event.*

**23. Do you live in the Riverdale neighborhood?**

- Yes<sub>1</sub>
- No<sub>2</sub>
- Unsure<sub>3</sub>

**24. Do you live at any of the following places?**

- Altgeld Gardens/Phillip Murray Homes<sub>1</sub>
- Golden Gates<sub>2</sub>
- Eden Green<sub>3</sub>
- Concordia<sub>4</sub>
- I don't live in any of these places<sub>5</sub>

**25. What is your zip code?** \_\_\_\_\_

**26. How long have you lived in your neighborhood?**

- Less than 1 year<sub>1</sub>
- 1 to 5 years<sub>2</sub>
- 6 to 10 years<sub>3</sub>
- 11 to 15 years<sub>4</sub>
- More than 15 years<sub>5</sub>

**27. How old are you?** \_\_\_\_\_

**28. What is your gender?**

- Female<sub>1</sub>
- Male<sub>2</sub>
- Other<sub>3</sub>

**Thank you for completing this survey!**

If you have any questions about this survey, please contact Lindy Carrow, the researcher from the Social IMPACT Research Center who is working with ARC, at 312-870-4957 or [lcarrow@heartlandalliance.org](mailto:lcarrow@heartlandalliance.org).



*This page was intentionally left blank*

## APPENDIX C: FOCUS GROUP QUESTIONS

### ***Your community...***

1. Let's talk about safety in your community. How safe do you feel in your community, on a scale of 1 to 10 where 1 = not at all safe and 10 = very safe?
2. What are the things that make you feel unsafe? Or what are the biggest safety issues?
3. What sorts of things do you think help to make communities safer? It could be events, activities, resources, or strategies.

### **We are going to switch gears a little bit and think about involvement in community groups...**

4. Now we want you to think about any neighborhood groups or partnerships you have been involved with in your community.
5. How did you initially come to be involved in each of these groups? What interested you in participating in those particular groups?

### ***Your Engagement...***

#### **Discussion Groups for Community Residents Engaged in ARC:**

#### **Now we're going to talk about your involvement with ARC...**

6. In what ways are you involved with ARC?
7. How engaged and valued do you feel as a community resident? What methods has ARC used to engage you in the consortium?
8. What could ARC do to build stronger ties with community residents or otherwise increase the number of community residents involved?
9. Now I want you to think about ARC, what ARC does, and what the goals are. How would you describe ARC to someone who does not know anything about it?  
*Please write down 2 things that ARC does and 2 goals of ARC.*
10. By show of hands, how many of you feel like ARC has improved safety in the community?
11. The following are the three goals that ARC identified to work towards last year.
  - Improving community safety
  - Creating vehicles for consistent communication
  - Increasing utilization of community resourcesWhat do you think about these goals? Is ARC effective at working to meet its goals? How is ARC working towards these goals?

12. What could ARC do more effectively meet its goals?

13. What do you view as ARC's greatest accomplishment to date?

### ***Your Engagement...***

#### **Discussion Groups for Community Residents NOT Engaged in ARC:**

1. By a show of hands, before today, how many of you had heard of ARC – or the Altgeld-Riverdale Consortium?
2. By a show of hands, how many of you have seen or received information about ARC at some point? Maybe you got an email, saw a poster or flyer somewhere, had a conversation about it with someone...

*For those unfamiliar with ARC, the Altgeld-Riverdale Consortium is a partnership of residents and other stakeholders collaborating to address safety issues in the Altgeld-Riverdale community. The goals of ARC are to improve and strengthen community safety, create vehicles for consistent communication, and increase utilization of community resources.*

3. What do you think is the role of groups like this in the community? Do you think a group like this is needed here? Why or why not?
4. What sorts of things do you think a community group like this could do to improve community safety?
5. What sorts of things might a group like this to make more community residents aware of them?
6. Now I want you to think about how interested you might be in getting involved in a group like this – or maybe you're not interested, and that's okay too. What would make you interested in getting involved with a group like this? Or what makes you not interested?

## APPENDIX D: ARC MEETING NOTES

### 2014 ARC Meetings, notes provided by ARC Coordinator

**Meeting date:** 2/20/14

**Organizations represented/in attendance:** CHA, Golden Gates Homeowners Association, HRDI, 9th Ward Office, Roseland Ceasefire, UCAN, IMPACT, TCA Health, Carver Park, People for Community Recovery

**Attendance:** 19 total attendees, 3 residents (16%)

**Notes:** (no notes provided)

**Meeting date:** 3/20/14

**Organizations represented/in attendance:** TCA Health, UCAN, The Habitat Company, BPI, Chicago Police Department, 9th Ward Office, CHA, Roseland Ceasefire, IMPACT, People for Community Recovery

**Attendance:** 32 total, 13 res (40%)

**Notes:** (no notes provided)

**Meeting date:** 4/17/14

**Organizations represented/in attendance:** Chicago Police Department, IMPACT, BPI, Golden Gates Homeowners Association, CHA, TCA Health, Youth Experiment, The Habitat Company, Roseland Ceasefire, HRDI, People for Community Recovery, Peter Rock Church, Chicago Public Library

**Attendance:** 32 total, 7 residents (22%)

**Notes:** (no notes provided)

**Meeting date:** 5/15/14

**Organizations represented/in attendance:** CHA, UCAN, 9th Ward Office, Chicago Police Department, Golden Gates Homeowners Association, The Habitat Company, Chicago Public Library, TCA health, BPI

**Attendance:** 17 total, 7 residents (41%)

**Notes:** On May 15, 2014 there was an ARC monthly meeting at the Altgeld CYC building. Community partners and residents were in attendance. Topics from the meeting included ARC funding, leadership committee, safety events, and partner announcements. Several resident partners will meet to begin an ARC leadership committee to outline a new ARC mission and vision, as well as leadership roles for ARC 2015.

**Meeting date:** 6/19/14

**Organizations represented/in attendance:** Chicago Public Library, CHA, IMPACT, People for Community Recovery, 9th Ward Office, Golden Gates Homeowners Association, Chicago Police Department, UCAN

**Attendance:** 27 total, 13 residents (48%)

**Notes:** The monthly ARC meeting was held at the Altgeld CYC building on July 17, 2014. A resident leader from the LAC facilitated the meeting with support from Andy Teitelman and the ARC Coordinator. The July ARC meeting focused on creating a consensus about the ARC mission and vision statements. The group could not come to a consensus about the wording in the mission and vision statements. The ARC Coordinator will email the group with the various versions of each statement and the members will reply with any

changes they feel should be made. The group will finalize the statements at the next ARC meeting.

**Meeting date:** 7/17/14

**Organizations represented/in attendance:** UCAN, BPI, LAC, Chicago Police Department, CHA, TCA Health, The Habitat Company, 9th Ward Office, Golden Gates Homeowners Association, Roseland Ceasefire

**Attendance:** 27 total, 13 residents (48%)

**Notes:** On June 19, 2014 there was an ARC monthly meeting at the Altgeld branch of the Chicago Public Library. Community partners and residents were in attendance. The People for Community Recovery president facilitated the meeting. Topics from the meeting included Altgeld housing development, ARC funding, leadership committee proposals, safety events, and partner announcements. ARC partners will vote on the proposed 2015 vision and mission statements as well as the leadership structure. Several resident partners will meet to continue conversation around ARC leadership for 2015.

**Meeting date:** 8/21/14

**Organizations represented/in attendance:** CHA, TCA Health, Golden Gates Homeowners Association, Chicago Police Department, Roseland Ceasefire, BPI, The Habitat Company, IMPACT

**Attendance:** 15 total, 3 residents (20%)

**Notes:** The August ARC meeting was held at Riverside Village Community Room and focused on a recent community shooting. Several representatives from the police department attended to explain the circumstances around the shooting (police shot an armed resident). Partners and police had open dialogue about the role of the police and community in curbing violence. CeaseFire gave a brief presentation about the work they are doing in the community and gave partners a handout about gang recognition and resistance. ARC partners were scheduled to vote on the ARC mission and vision statements suggested by the leadership council and other partners but due to low resident turnout the vote was tabled until 9/4/14.

**Meeting date:** 9/18/14

**Organizations represented/in attendance:** The Habitat Company, Youth Guidance? IMPACT, Chicago Police Department, BPI, HRDI, TCA Health, UCAN

**Attendance:** 11 total, 1 resident (9%)

**Notes:** The September ARC meeting was held 9/18/14 at the Riverside Village community room. The meeting focused on the creation of a youth and young adult council to get the young people in the community to assist with tackling issues related to violence and positive youth engagement. Partners relayed that separating the very young in the council (ages 14-18) and the older (ages 19-27) would allow for more meaningful dialogue and creativity among the group. It was decided that there would be a youth council and a separate young adult council. The ARC coordinator has scheduled a planning committee meeting for 10/2/14 to begin forming the councils with ARC partners. There was also talk of an ARC resource and safety event that would include participation from all ARC partners. There will be more planning around this effort as well.

**Meeting date:** 10/16/14

**Organizations represented/in attendance:** (info needed from ARC Coordinator)

**Attendance:**

**Notes:**

**Meeting date:** 11/20/14

**Organizations represented/in attendance:**

**Attendance:**

**Notes:**

**Meeting date:** 12/18/14

**Organizations represented/in attendance:**

**Attendance:**

**Notes:**

TOTAL ATTENDEES: 180 (including duplicates)

## APPENDIX E: SAFETY EVENT NOTES

**Event:** CAPS Policing Block Club Meet and Greet

**Month:** June (5 events)

**Host Organization:** CAPS, Altgeld Local Advisory Council (LAC), and Eastlake Management

**Event notes:** CAPS, Altgeld Local Advisory Council (LAC), and Eastlake Management held Block Meet and Greet in Altgeld Gardens for residents and police to build rapport and encourage people to report crime for a safe summer.

**Number of attendees:** 239

**Event:** Beaubien Woods Celebration

**Month:** June

**Host Organization:** Cook County Forest Preserves

**Event notes:** The Illinois Forest Preserve along with the CHA held the annual Beaubien Woods Celebration on June 14th. Activities at the celebration included canoeing, archery, fishing, walking trails, flying kites, learning about animals and nature, and family fun.

**Number of attendees:** 250-300

**Event:** Village Take Back

**Month:** June

**Host Organization:** Altgeld LAC

**Event notes:** On June 17th, the LAC and Young Leaders Alliance hosted a Village Take Back in Altgeld. The event began with a peace rally followed by a peace march. There was a bouncy house for youth and hot dogs were donated by Ultra Foods.

**Number of attendees:** 60

**Event:** Luau-Pa-Looza (Water Safety Event)

**Month:** June

**Host Organization:** Golden Gates Homeowners Association

**Event notes:** Carver Park, in conjunction with the Golden Gate Homeowners Association, held the Luau-Pa-Looza event on June 21st. This event re-introduced residents to park programming while conducting a water safety presentation to keep park patrons safe.

**Number of attendees:** 100-125

**Event:** Unity in the Community

**Month:** July

**Host Organization:** Peter Rock Church

**Event notes:** Peter Rock Church hosted the Unity in the Community Day event. Community Day began with a short sermon and safety speech from Pastor Lane. The event was very family-centered and included activities such as horseback riding, a face painting clown, and a bouncy house for youth. There was also a game table, medical enrollment, and a dunk tank for adults. Pastor Lane was among the individuals who were dunked in the tank!

**Number of attendees:** 350

**Event:** UCAN Personal Safety Class

**Month:** August

**Host Organization:** UCAN

**Event notes:** UCAN held a personal safety class led by a 25-year veteran of martial arts training and competitions who showed the attendees basic self-defense moves. The class was extremely engaging and every participant received a personal safety alarm keychain.

**Number of attendees:** 9

**Event:** Back to School Safety Festival

**Month:** August

**Host Organization:** Riverdale Village Property Management

**Event notes:** The Riverside Village back to school event featured book bag giveaways and safety talks by a police representative on community and personal safety. The event was full of food, family, and fun!

**Number of attendees:** ~150

**Event:** LAC Back to School Safety Parade

**Month:** August

**Host Organization:** Altgeld LAC

**Event notes:** The Altgeld back to school event featured a parade with community and safety features (Ninja Turtle character talking to youth about safety and police presence) as well as book bag giveaways. The event was also full of food, family, and fun!

**Number of attendees:** ~500

**Event:** Community Safety Event & Camp Fit Kids Finale

**Month:** August

**Host Organization:** Altgeld Riverdale Early Learning Coalition (BPI)

**Event notes:** The Early Childhood Learning Coalition held a finale to the Camp Fit Kids summer camp that focused on health, wellness, and safety. The event featured stations where vendors held fun activities with families encouraging them to “Be calm, get strong, and stay safe.” Each child walked away with valuable information and a prize! There were demonstrations of martial arts, dance, art, and youth-created healthy snacks.

**Number of attendees:** ~160

**Event:** CPR, First Aid, AED Training

**Month:** August

**Host Organization:** People for Community Recovery (PCR)

**Event notes:** The People for Community Recovery held CPR classes for a week to encourage residents to learn life-saving skills. The classes were held at two locations: Riverside Village and Carver Park.

**Number of attendees:** 50

**Event:** Community Safety and Wellness Event

**Month:** September

**Host Organization:** TCA Health & Wellness Collaborative

**Event notes:** TCA Health held a Wellness and Safety event at their clinic to promote healthy and safe living. The event featured health and dental screenings, safety workshops, and interactive demonstrations in dance and aerobics. There were community partners showcased as vendors and the community showed up in large numbers.

**Number of attendees:** ~200



**Event:** STAC Senior Safety event

**Month:** November

**Host Organization:** ARC and STAC

**Event notes:** The ARC and STAC held a Senior Safety event in November for which there were approximately 55 participants to increase awareness of issues related to senior safety. The seniors made personal safety kits and heard information from TCA, the CDC, transportation, and other senior resources.

**Number of attendees:** 55

**Event:** Tournament of Peace

**Month:** December

**Host Organization:** Carver Park

**Event notes:** The ARC and Carver Park held a hugely successfully basketball/dance event called the Tournament of Peace. There were approximately 150 attendees (with about 110 being youth). This event was to assist youth in bringing the new year in peacefully and Cease Fire was on hand conducting conflict resolutions workshops.

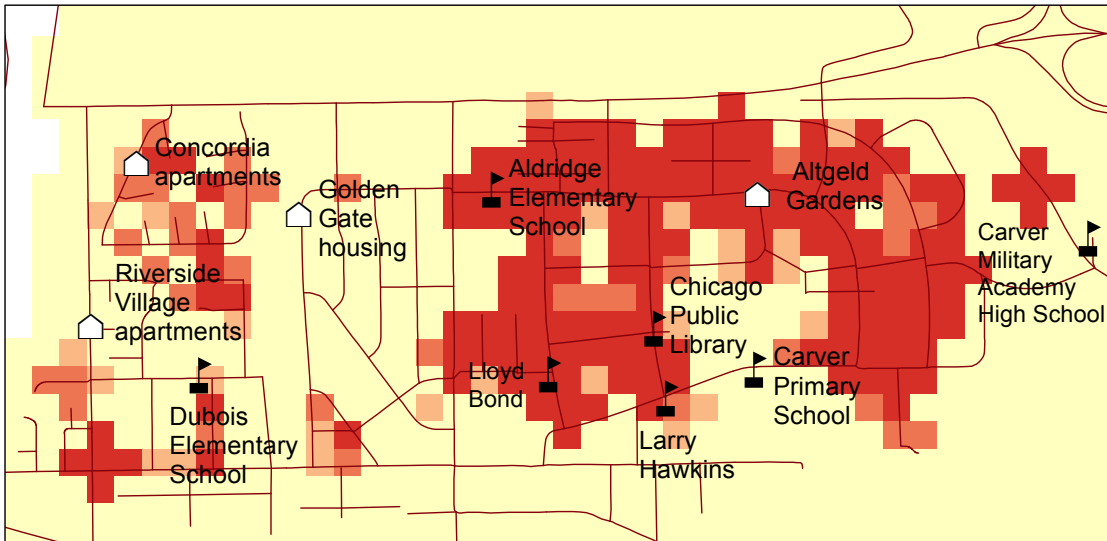
**Number of attendees:** 150

**TOTAL EVENTS:** 17

**TOTAL ATTENDEES:** 2273-2348 (including duplicate attendees)

# APPENDIX F: CRIME HOT SPOT MAPS

## 2002 Crime Hot Spots

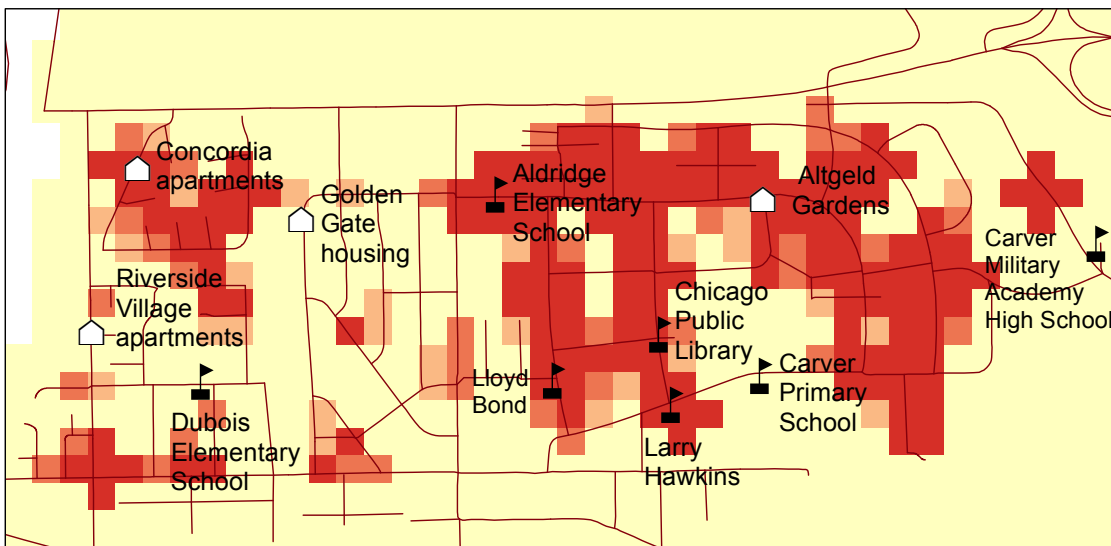


### Crime Hot Spots

- High crime density
  - Medium crime density
  - Low crime density
  - Little to no crime
- Housing Complex
  - School or Library



## 2003 Crime Hot Spots

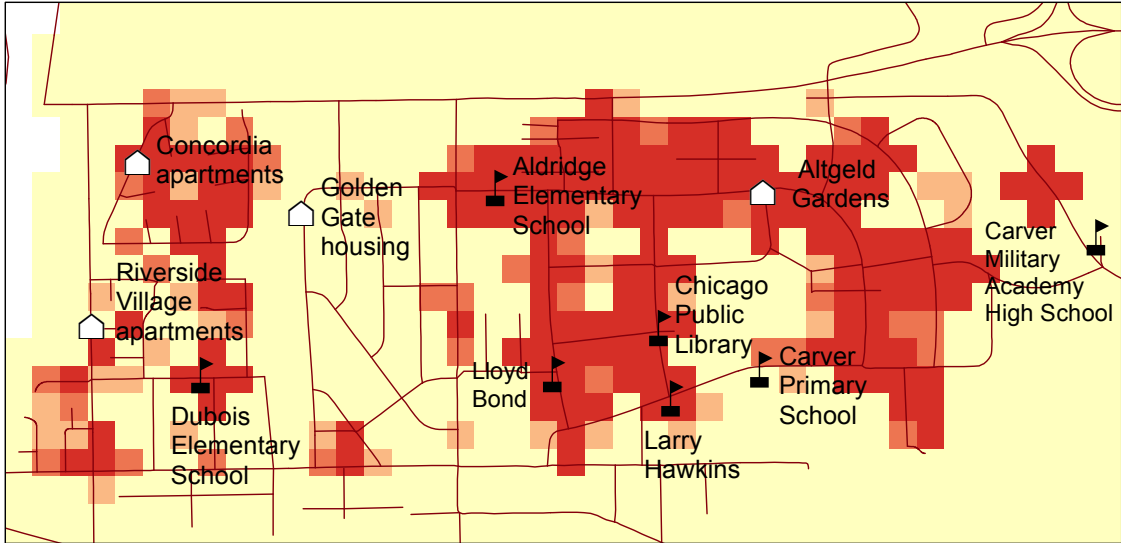


### Crime Hot Spots

- High crime density
  - Medium crime density
  - Low crime density
  - Little to no crime
- Housing Complex
  - School or Library



## 2004 Crime Hot Spots



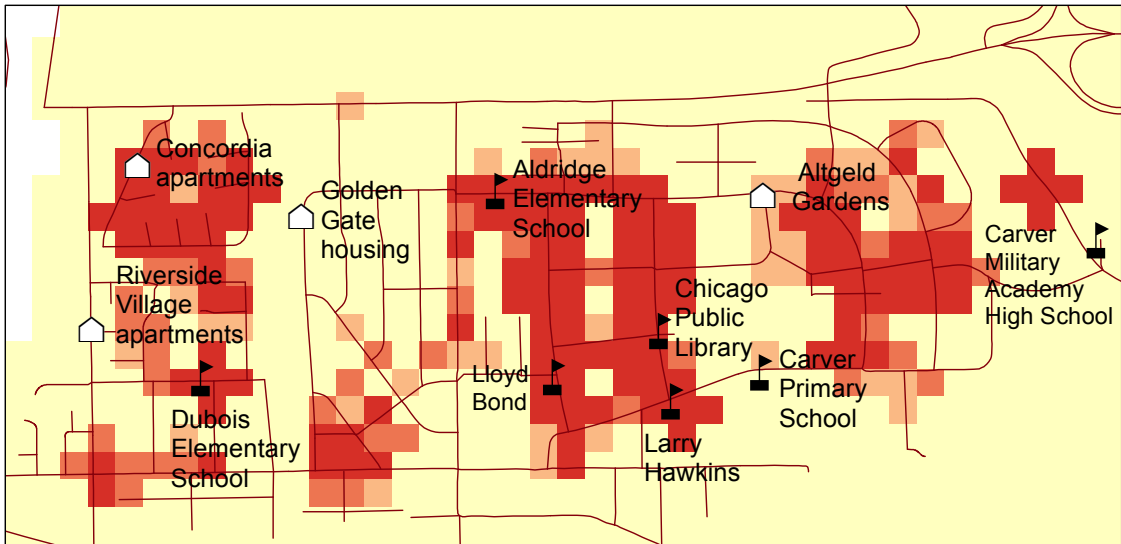
### Crime Hot Spots

- High crime density
- Medium crime density
- Low crime density
- Little to no crime

- Housing Complex
- School or Library



## 2005 Crime Hot Spots



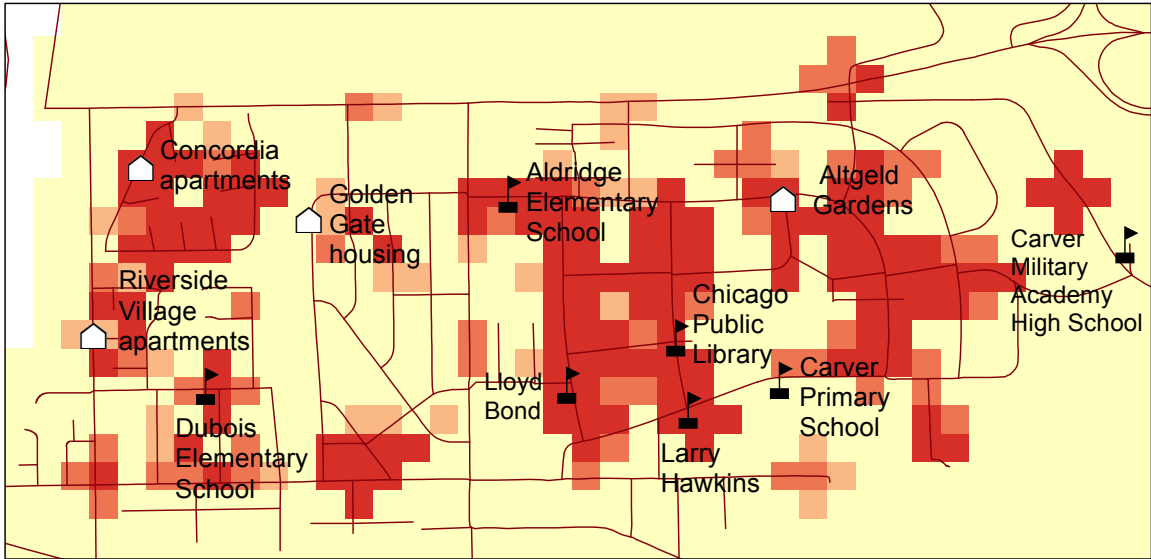
### Crime Hot Spots

- High crime density
- Medium crime density
- Low crime density
- Little to no crime

- Housing Complex
- School or Library



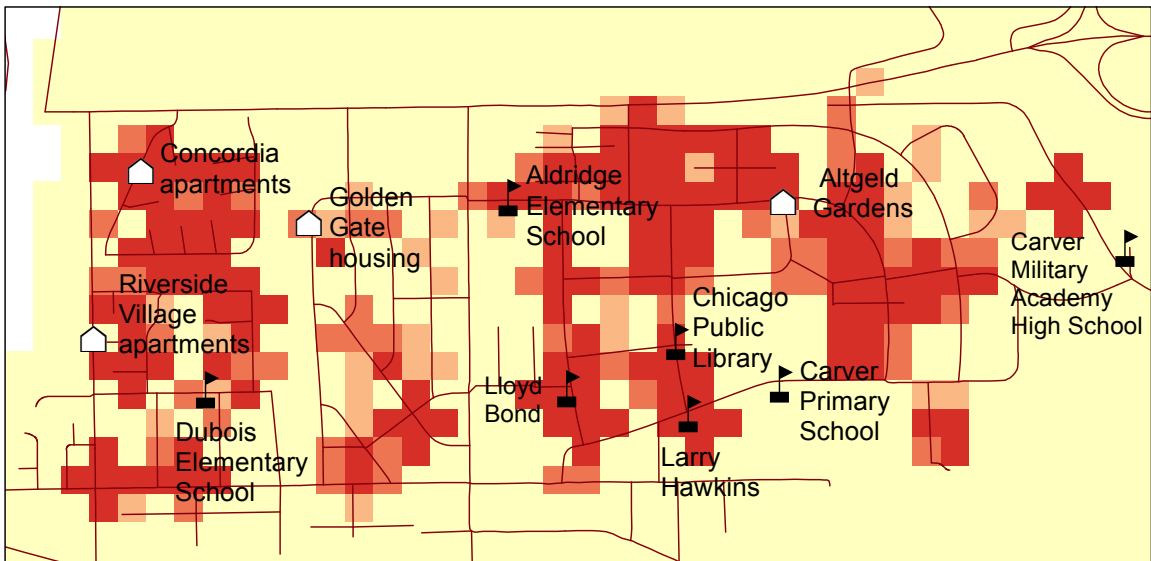
## 2006 Crime Hot Spots



### Crime Hot Spots



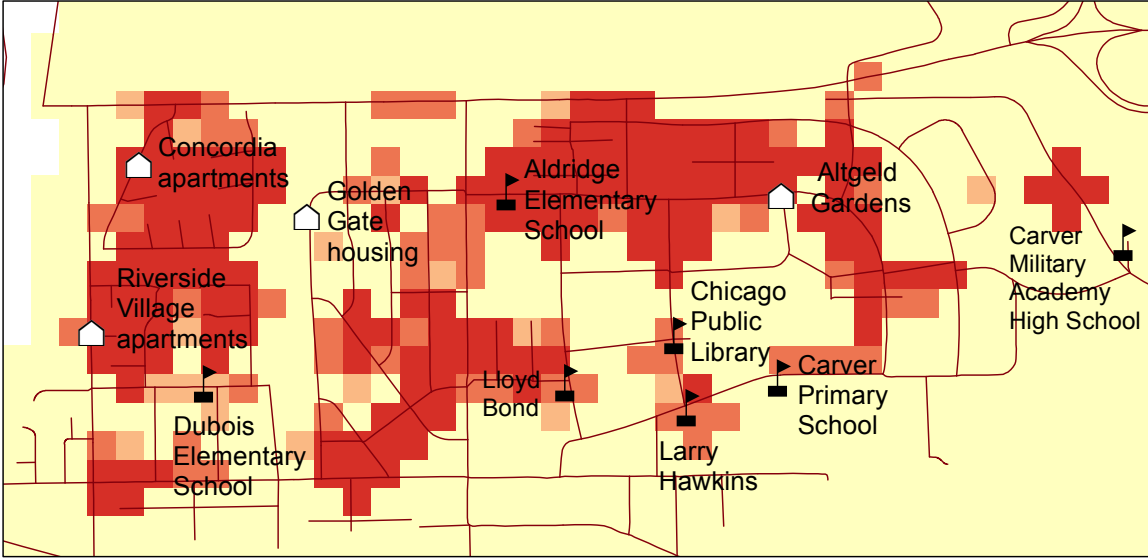
## 2007 Crime Hot Spots



### Crime Hot Spots



# 2008 Crime Hot Spots

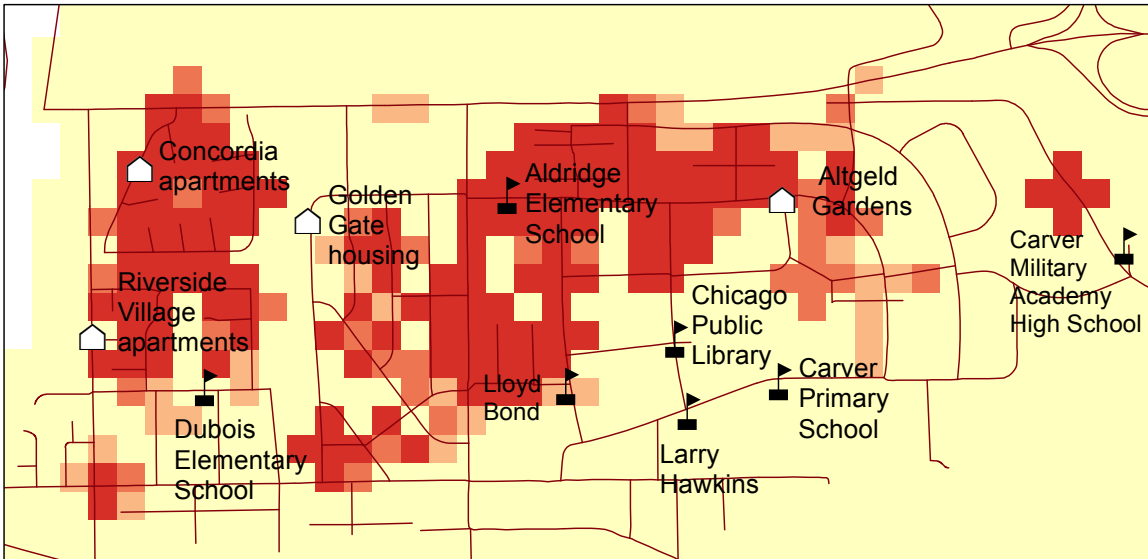


## Crime Hot Spots

- High crime density
- Medium crime density
- Low crime density
- Little to no crime
- Housing Complex
- School or Library



# 2009 Crime Hot Spots

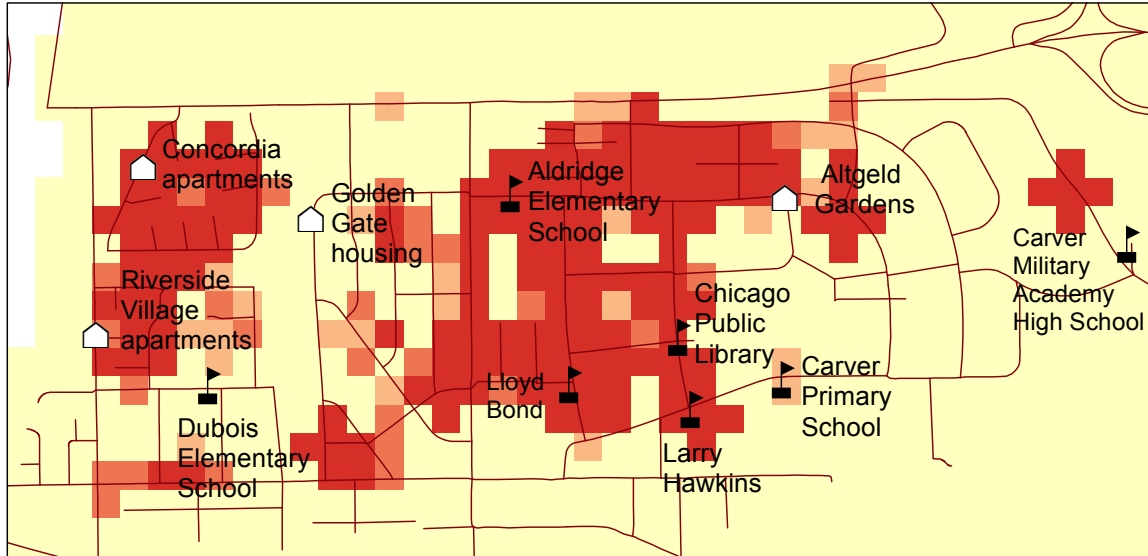


## Crime Hot Spots

- High crime density
- Medium crime density
- Low crime density
- Little to no crime
- Housing Complex
- School or Library



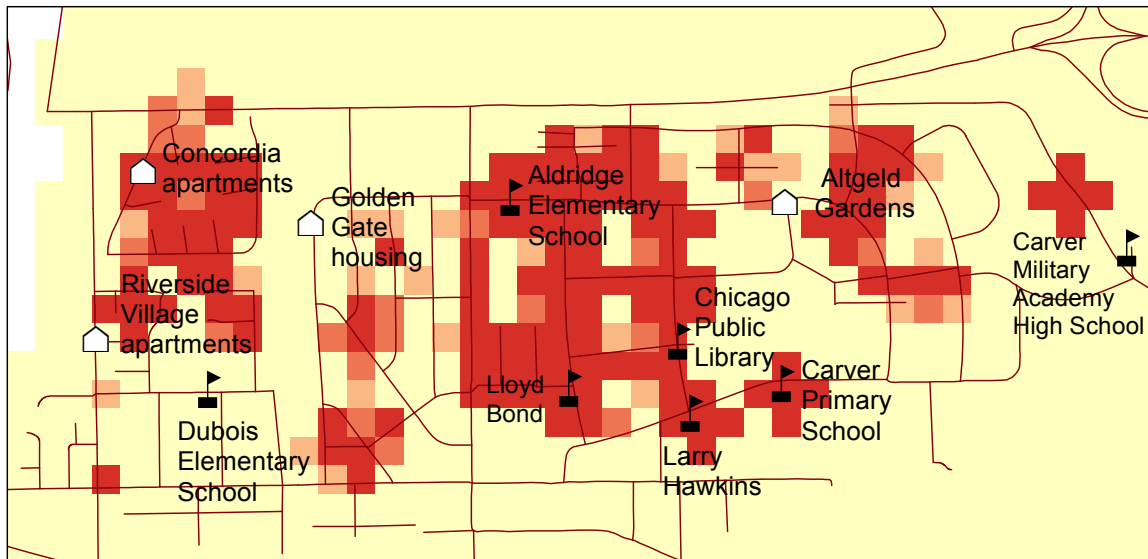
## 2010 Crime Hot Spots



### Crime Hot Spots



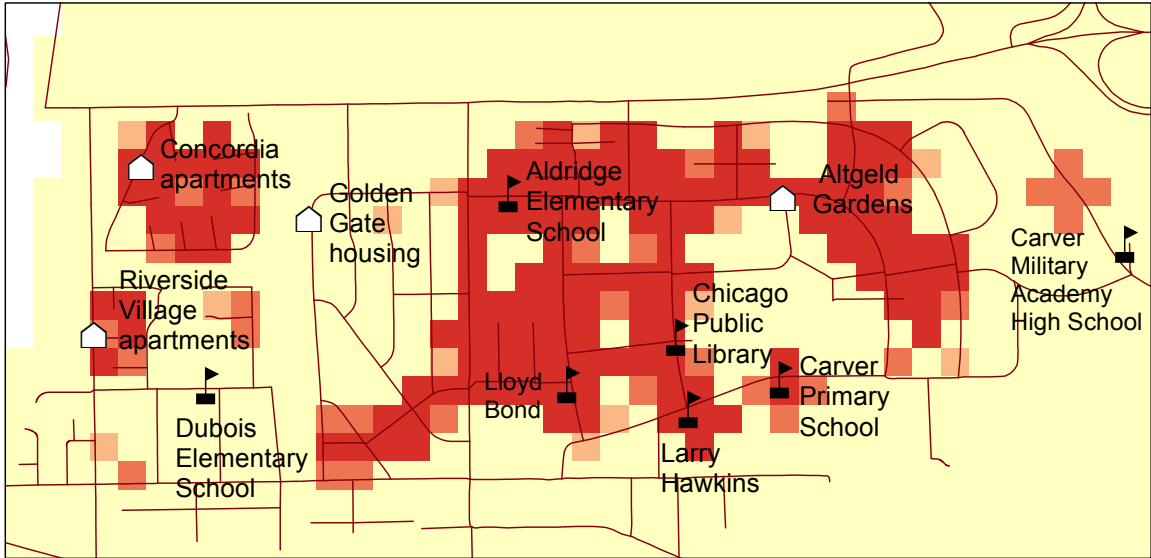
## 2011 Crime Hot Spots



### Crime Hot Spots



## 2012 Crime Hot Spots

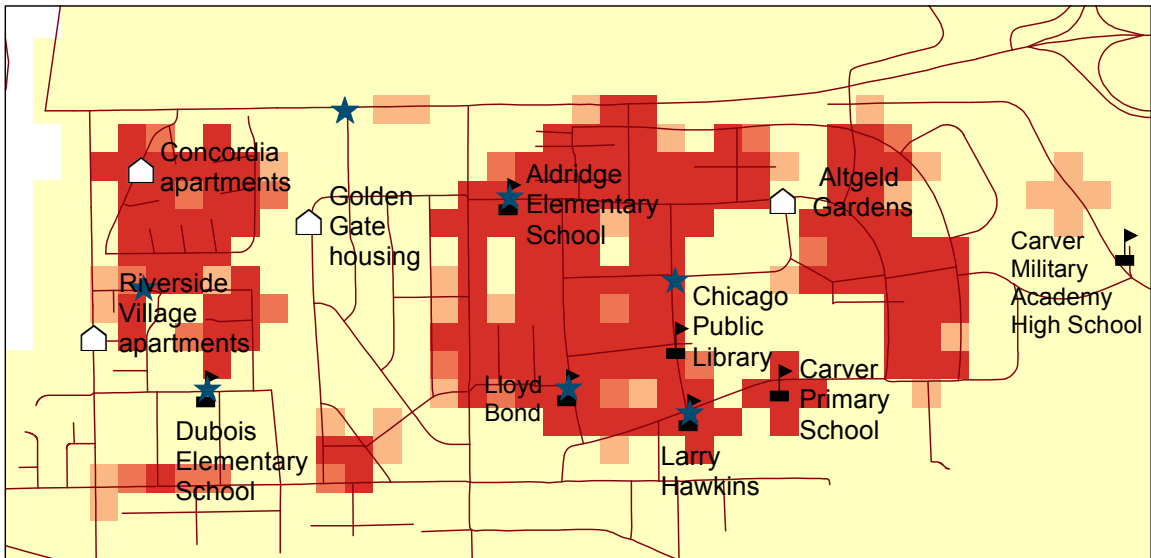


### Crime Hot Spots

- High crime density
- Medium crime density
- Low crime density
- Little to no crime
- Housing Complex
- School or Library



## 2013 Crime Hot Spots

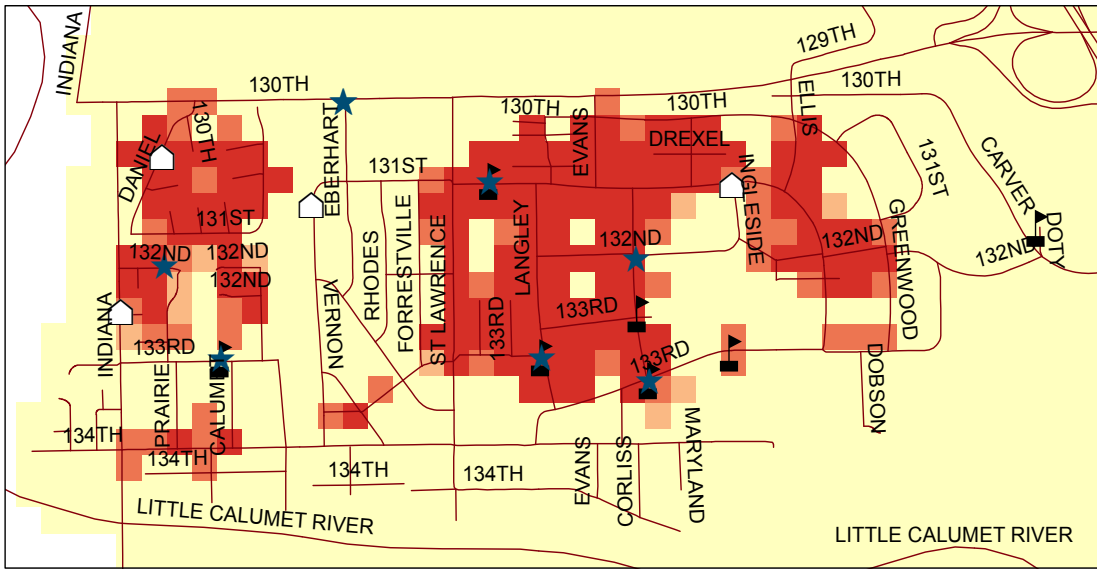


### Crime Hot Spots

- High crime density
- Medium crime density
- Low crime density
- Little to no crime
- Housing Complex
- School or Library
- Safe Path Patrol Station



# 2014 Hot Spots



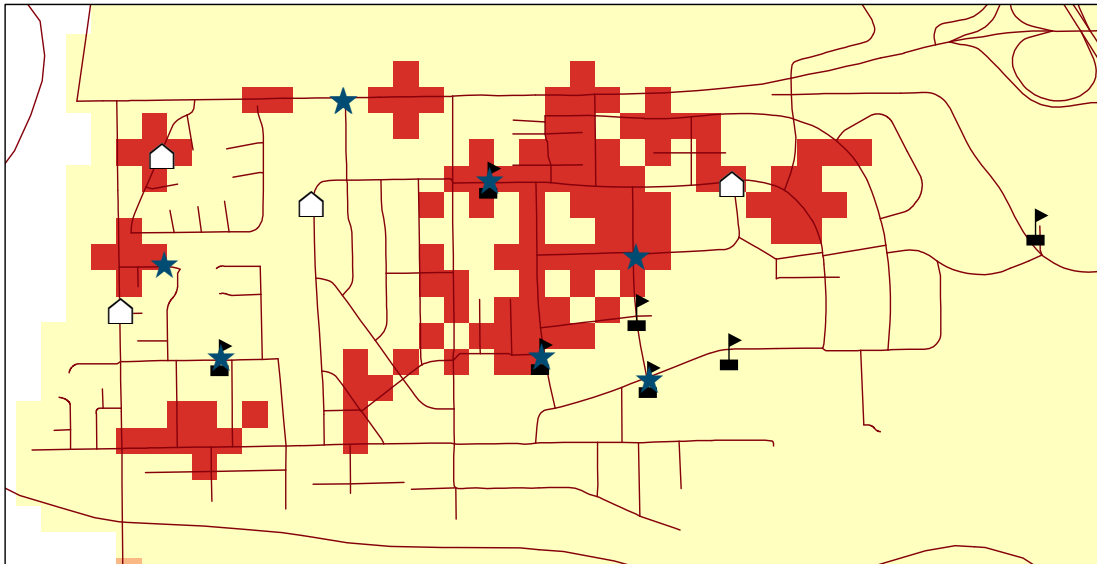
### Crime Hot Spots

- High crime density
- Medium crime density
- Low crime density
- Little to no crime

- ★ Safe Path Patrol Station
- Housing Complex
- School or Library



# 2014 Narcotics Hot Spots



### Crime Hot Spots

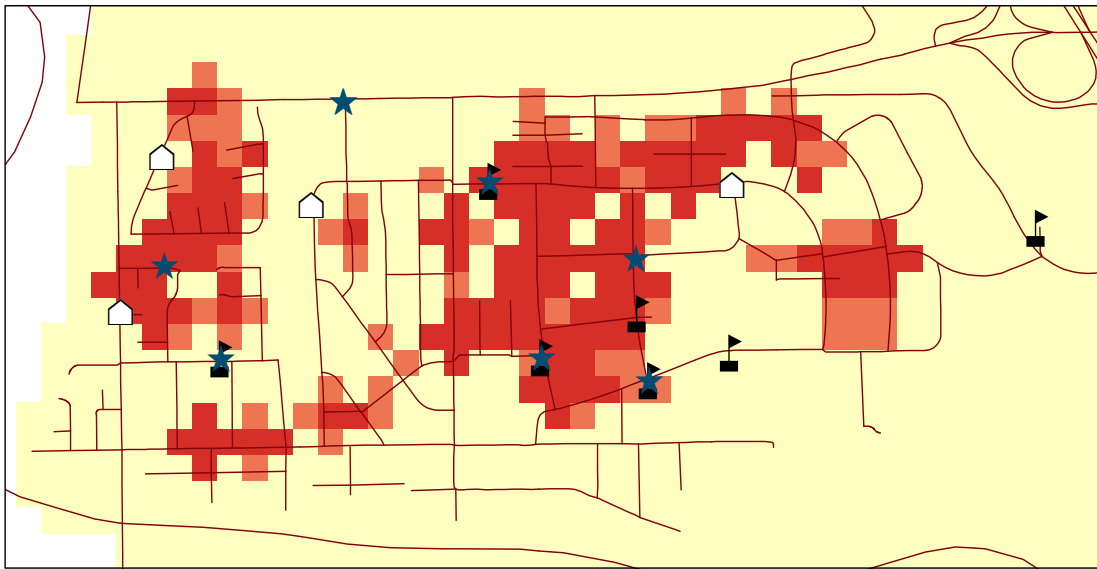
- High crime density
- Medium crime density
- Low crime density
- Little to no crime

- ★ Safe Path Patrol Station
- Housing Complex
- School or Library





# 2014 Criminal Damage Hot Spots



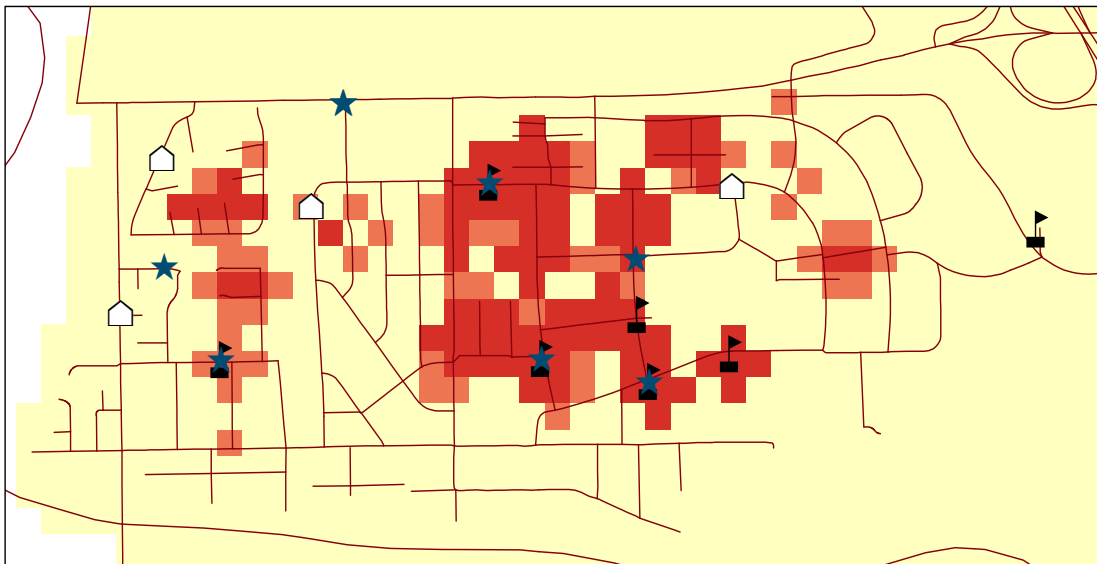
## Crime Hot Spots

- High crime density
- Medium crime density
- Low crime density
- Little to no crime

- Safe Path Patrol Station
- Housing Complex
- School or Library



# 2014 Assault Hot Spots



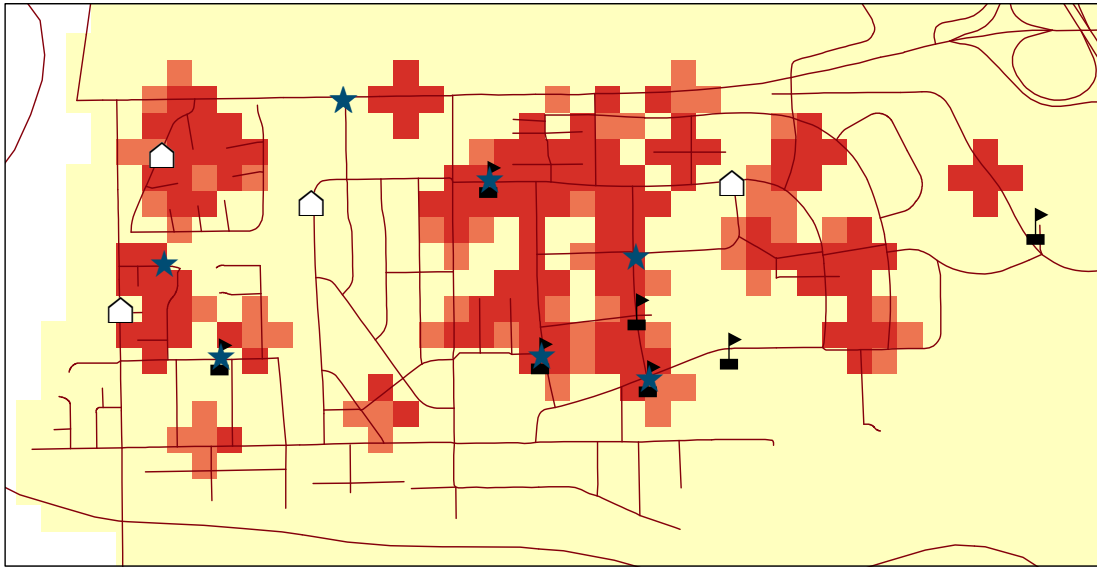
## Crime Hot Spots

- High crime density
- Medium crime density
- Low crime density
- Little to no crime

- Safe Path Patrol Station
- Housing Complex
- School or Library



# 2014 Theft Hot Spots



## Crime Hot Spots

- High crime density
- Medium crime density
- Low crime density
- Little to no crime

- Safe Path Patrol Station
- Housing Complex
- School or Library



33 West Grand Avenue, Suite 500 • Chicago, Illinois 60654  
socialimpactresearchcenter.org • ilpovertyreport.org • research@heartlandalliance.org  
312.870.4949