

## REVIEW ARTICLE

# Updating Biodiversity Studies in Loricated Protists: The Case of the Tintinnids (Alveolata, Ciliophora, Spirotrichea)

Luciana F. Santoferrara<sup>a,1</sup>, Charles Bachy<sup>b</sup>, Viviana A. Alder<sup>c,d</sup>, Jun Gong<sup>e</sup>, Young-Ok Kim<sup>f</sup>, Alessandro Saccà<sup>g</sup>, Inácio D. da Silva Neto<sup>h</sup>, Michaela C. Strüder-Kypke<sup>i</sup>, Alan Warren<sup>j</sup>, Dapeng Xu<sup>k</sup>, Zhenzhen Yi<sup>l</sup> & Sabine Agatha<sup>m,1</sup>

a Department of Marine Sciences, University of Connecticut, Groton, Connecticut 06340, USA

b Monterey Bay Aquarium Research Institute, Moss Landing, California 95039, USA

c Instituto de Ecología, Genética y Evolución de Buenos Aires (UBA-CONICET) y Departamento de Ecología, Genética y Evolución, Facultad de Ciencias Exactas y Naturales, Universidad de Buenos Aires, Buenos Aires, C1428EHA, Argentina

d Instituto Antártico Argentino, Dirección Nacional del Antártico, Buenos Aires C1010AAZ, Argentina

e Yantai Institute of Coastal Zone Research, Chinese Academy of Sciences, Yantai 264003, China

f South Sea Environment Research Division, Korea Institute of Ocean Science & Technology, Geoje 656-834, Korea

g Dipartimento di Scienze Biologiche e Ambientali, Università degli Studi di Messina, Messina 98166, Italy

h Departamento de Zoologia, Universidade Federal do Rio de Janeiro, Rio de Janeiro 21941-590, Brazil

i Department of Molecular and Cellular Biology, University of Guelph, Guelph, ON N1G2W1, Canada

j Department of Life Sciences, Natural History Museum, London SW75BD, United Kingdom

k State Key Laboratory of Marine Environmental Sciences, Institute of Marine Microbes and Ecospheres, Xiamen University, Xiamen 361102, China

l School of Life Science, South China Normal University, Guangzhou 510631, China

m Department of Ecology and Evolution, University of Salzburg, Salzburg A-5020, Austria

## Keywords

ciliates; DNA barcoding; ecology; morphology; phylogeny; taxonomy.

## Correspondence

S. Agatha, Department of Ecology and Evolution, University of Salzburg, Hellbrunnerstrasse 34, A-5020 Salzburg, Austria

Telephone number: +43 662 8044 5540;

FAX number: +43 662 8044 5698;

e-mail: [sabine.agatha@sbg.ac.at](mailto:sabine.agatha@sbg.ac.at)

and

L. Santoferrara, Department of Marine Sciences, University of Connecticut, 1080 Shennecossett Road, Groton, CT 06340, USA

Telephone number: +1 860 405 9232;

FAX number: +1 860 405 9153;

e-mail: [luciana.santoferrara@uconn.edu](mailto:luciana.santoferrara@uconn.edu)

<sup>1</sup>These authors contributed equally to this work.

Received: 30 December 2015; revised 3 February 2016; accepted February 3, 2016.

doi:10.1111/jeu.12303

ACCURATE species identification is critical to understand protist biodiversity in all its dimensions (taxonomic, genetic, and functional). It is also the only means to track species distributions and abundances, especially in

the context of potential shifts due to climate change. Recent developments in sequencing technologies have led to the discovery of novel lineages, life styles, and physiological traits, and are more and more integrated in

## ABSTRACT

Species determination is crucial in biodiversity research. In tintinnids, identification is based almost exclusively on the lorica, despite its frequent intraspecific variability and interspecific similarity. We suggest updated procedures for identification and, depending on the aim of the study, further steps to obtain morphological, molecular, and ecological data. Our goal is to help improving the collection of information (e.g. species re-/descriptions and DNA barcodes) that is essential for generating a natural tintinnid classification and a reliable reference for environmental surveys. These suggestions are broadly useful for protistologists because they exemplify data integration, quality/effort compromise, and the need for scientific collaborations.

the protistologist's tool box. It is thus pivotal to accompany such advances in molecular methods with updated views of the classical, morphology-based taxonomies that still prevail for several protist groups, especially those with shells or other hard structures that are relatively easy to collect, preserve, examine, and classify. One of those groups are the tintinnid ciliates (Spirotrichea, Tintinnida), which are characterized by a lorica. In contrast to the vast majority of ciliates described mainly by cell morphology, the taxonomy and classification of the more than 1,000 species and 75 genera of tintinnids are based almost exclusively on lorica features (Agatha and Strüder-Kypke 2013; Lynn 2008). Also, the study of the lorica has allowed the accumulation of diversity and distribution data for more than two centuries (Alder 1999; Dolan et al. 2013), and it has even been shown to relate to ecophysiological traits (Dolan 2010).

Despite the invaluable knowledge generated using lorica-based species identification, the power of this structure for taxa circumscription and genealogical reconstruction has long been questioned (Entz 1909), but rarely confirmed due to the paucity in the application of other criteria. Examples of phenotypic plasticity observed in cultures (Laval-Peuto 1981) and of cryptic species differentiated by their DNA sequences (Santoferrara et al. 2013, 2015) have shown that lorica taxonomy is partly artificial and that the actual tintinnid diversity is unknown.

Data on cell morphology, lorica ultrastructure, and DNA sequences have recently allowed some taxonomic rearrangements. For example, *Favella ehrenbergii*, an important model organism in plankton ecology, has actually included species from two different families (Agatha and Strüder-Kypke 2012). But a far-reaching revision of tintinnid systematics is currently impossible because cytological and molecular characters are known in less than 10% of the named species (Agatha and Strüder-Kypke 2014). Hence, the lorica is still the only key to the comprehensive, up to 240-yr-old body of literature, including almost all original descriptions.

We present an updated view on the use of the lorica for species identification and subsequent steps for taxonomic and ecological work (Fig. 1). We gathered the morphological, molecular, and ecological data that, according to our experience, provide the best compromise between data quality and work effort based on the desired aim of the study (Boxes S1–S3). Integrated approaches are needed to avoid old and recent concerns, such as the erection of insufficiently described taxa and the accumulation of inaccurately identified DNA sequences in public repositories (e.g. NCBI GenBank). These problems affect all aspects of biodiversity, from the establishment of a natural classification system and the elucidation of phylogenetic relationships to the exploration of community structure and function using environmental sequencing. We hope to improve data quality by guiding new generations of specialists and encouraging collaborations among researchers with different expertise.

## SPECIES IDENTIFICATION

Identification is based on lorica morphology (Box S1.1). The general lorica shape, the ability to adhere particles onto some parts or the entire lorica, and the diameter and characteristics of the lorica opening are the most reliable taxonomic characters (Laval-Peuto and Brownlee 1986). In contrast, the length and other lorica features are more variable, as they depend on the construction stage and are influenced by the cell cycle and environmental factors.

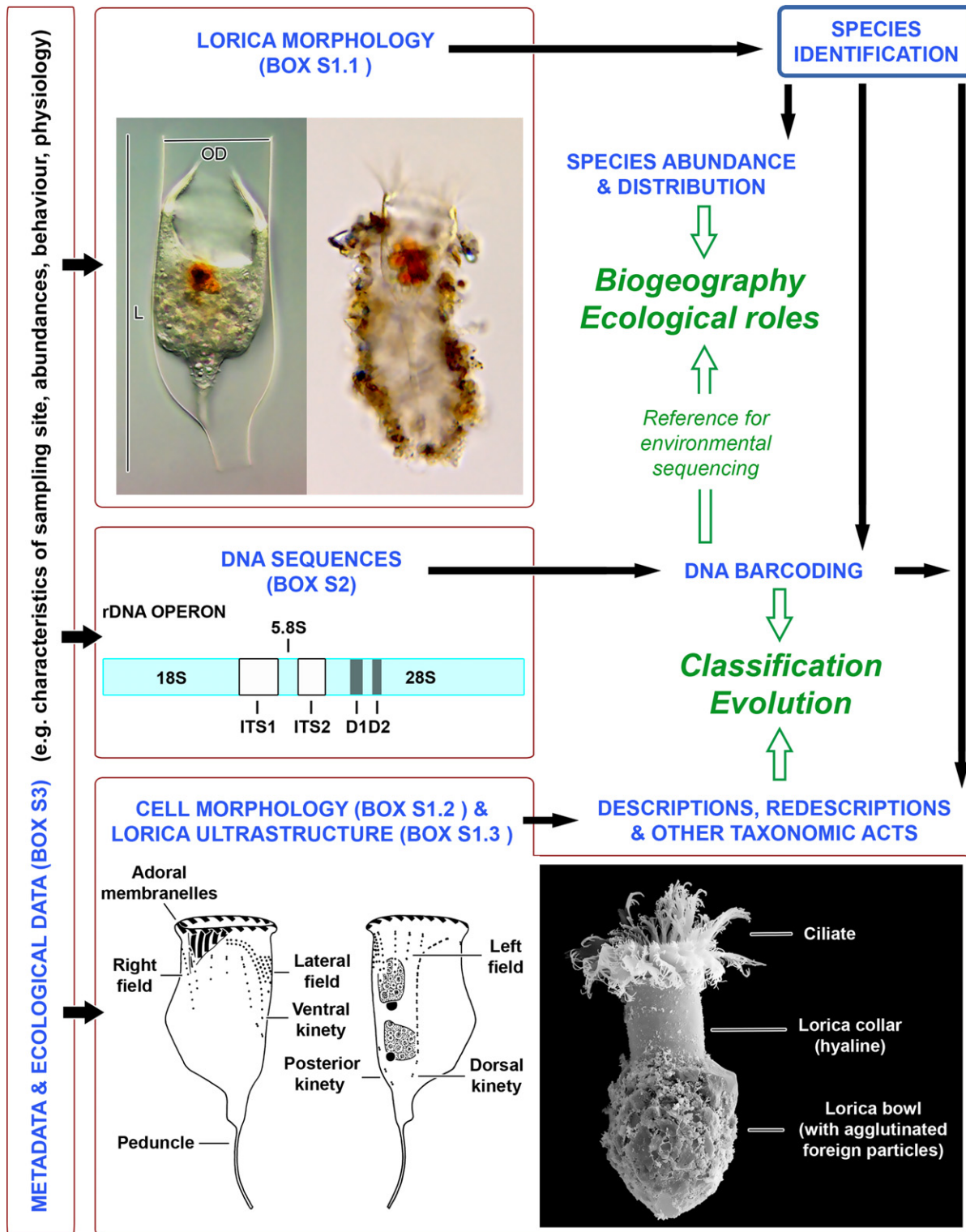
Documentation of lorica morphology and morphometry, as well as of the literature used for determination (including the discussion of observed deviations), is necessary for future comparisons. Monographs and revisionary taxonomic treatises are a very helpful starting point for identification (e.g. Kofoid and Campbell 1929, 1939; Zhang et al. 2012), but these works usually changed the original species circumscriptions (by “splitting” or “lumping” them artifactually), occasionally do not provide the relevant information in a suitable way, and sometimes even include mistakes. To overcome these difficulties, it is better to “go back to the roots” and rescue the old bibliography (e.g. Brandt 1906, 1907; Hada 1932; Jörgensen 1924). The usage of original descriptions or, under justified circumstances, authoritative redescriptions (those that allow an unequivocal identification in cases of insufficient original descriptions) helps to prevent mistakes in the final identifications. Consulting original descriptions is now feasible given that many of the older publications are freely available online (<https://archive.org>; <http://www.biodiversitylibrary.org>; <http://www.ioc-unesco.org>; <http://www.obs-vlfr.fr/LOV/aquaparadox/html/ClassicMonographs.php>).

## OTHER ASPECTS INVOLVED IN UNDERSTANDING TINTINNID BIODIVERSITY

### Species abundance and distribution

The classical approach of lorica-based identification (Box S1.1) combined with counts and measurements under the inverted microscope (Box S3) is currently the most accurate and simplest way to estimate abundance and biomass. This method is still widely used to study distribution over spatial and temporal scales (McManus and Santoferrara 2013).

More recently, the use of environmental sequencing (clone libraries and, lately, high-throughput sequencing, HTS) to study the diversity and distribution of tintinnid assemblages has become promising, for example, for the detection of rare or cryptic taxa not observed by microscopy (Bachy et al. 2013, 2014; Santoferrara et al. 2014, 2016). These methods generally use partial sequences of the small subunit ribosomal RNA gene (SSU rDNA) and involve several bioinformatic procedures (Bik et al. 2012; Logares et al. 2012). Sequences are clustered into operational taxonomic units (OTUs) based on their similarity (generally 99–100% for tintinnids). These OTUs may be identified using reference data-



**Figure 1** Biodiversity studies in tintinnid ciliates. Species identification is still based almost exclusively on lorica features, such as the structure, shape, and size, especially of the opening diameter. Accurate determination is fundamental for subsequent steps, such as (i) estimation of species abundance and distribution for ecological studies, (ii) linkage of DNA sequences to species for phylogenetic inference and the establishment of reference databases, and (iii) the re-/description of species based not only on lorica characters, but also on cell features recognizable in live and protargol-stained material. Integration of morphological, molecular, and ecological information (Boxes S1–S3) is needed to provide a natural classification system, a reliable evolutionary model, and a deep understating of biogeography and ecological roles. L, length; OD, opening diameter.

bases (see below), given the usual desire to link OTUs to traditional species in terms of morphology, behaviour, ecology and/or physiology (Caron 2013; Dolan 2015; McManus and Katz 2009). A limitation of environmental sequencing, however, is that it provides only relative abundances, which sometimes are inconsistent compared to cell counts (for example, due to biases during DNA extraction and PCR amplification or because of differences in the number of SSU rDNA gene copies among species; Medinger et al. 2010).

### DNA barcoding

Barcoding involves two stages. Its ultimate aim is to identify query DNA sequences (e.g. environmental OTUs) using reference DNA sequences. But first, reference DNA sequences from identified species have to be obtained. This stage requires accuracy in both species identification (Box S1.1) and molecular analyses (Box S2). For tintinnids, the sequencing of isolated single cells offers a direct link between lorica morphology and DNA sequence, and it is useful in field samples or species not amenable to clonal culture (Lynn and Pinheiro 2009). Given that single cell sequencing results in specimen destruction, published measurements and images are the accompanying evidence for the barcoded species (Pawlowski et al. 2012).

The SSU rDNA gene is the most commonly sequenced marker in tintinnids and has been very useful for phylogenetic inferences at family and genus levels (Agatha and Strüder-Kypke 2014). However, the differentiation of closely related species is better achieved by less conserved regions of the rDNA, such as the D1–D2 region of the large subunit rRNA gene (LSU rDNA) and the 5.8S rRNA gene combined with the internally transcribed spacers (ITS) 1 and 2 (Santoferrara et al. 2013, 2015; Xu et al. 2012). Most tintinnid species sequenced so far differ by at least 0.6% in the LSU rDNA and/or 1.5% in the ITS regions (Santoferrara et al. 2015). Analysing all the rDNA regions simultaneously improves phylogeny resolution and allows focusing on different systematic levels (species, genus, and above-genus) by creating sub-datasets of conserved and hypervariable regions (Bachy et al. 2012; Santoferrara et al. 2012). In contrast, the use of the ITS2 secondary structure and compensatory base changes for species separation is controversial and should be cautiously evaluated (Caisova et al. 2011; Coleman 2000). The proposed universal metazoan barcode, the mitochondrial cytochrome oxidase subunit I gene, has not been reliably amplified for tintinnids yet (Strüder-Kypke and Lynn 2010).

Building a reference database for molecular identification and phylogeny requires careful scrutiny of DNA sequences retrieved from public repositories (e.g. NCBI GenBank) given the proliferation of errors and misidentifications. An alternative starting point are public reference databases, in which the DNA sequences are (at least partially) curated based on taxonomic expertise (e.g. PR<sup>2</sup>, Guillou et al. 2013; EukRef, <http://eukref.org/>).

### Descriptions, redescrptions, and nomenclatural changes

Taxonomic acts are regulated by the International Code of Zoological Nomenclature (ICZN = International Commission of Zoological Nomenclature 1999). For the description of new species and the redescription of insufficiently known species of tintinnids, it is indispensable that the lorica information necessary for identification is complemented by additional lorica and cytological features as detailed as possible (Boxes S1.2 and S1.3). Permanent material must be deposited in an acknowledged collection, and at least SSU rDNA sequences should be submitted to public repositories (e.g. Lynn and Simpson 2009).

A combination of live observation and protargol staining reveals the majority of species-specific morphological features in most ciliate groups, and the latter provides permanent slides for deposition (Foissner 2014). Low numbers and/or poorly stained cells often prevent accurate descriptions and redescrptions. It is difficult to predetermine a number of specimens to study, yet morphometric data and statistical analyses should be grounded on enough specimens to grant the best compromise between effort and accuracy. An adequate sample size avoids the establishment of new species based on possibly atypical specimens and allows rough estimates of the intraspecific variability; in this sense, it is also important to study several populations.

Species under scrutiny need careful comparison with congeners and other similar species, including the discussion of resemblances and differences in morphological and molecular characters. Currently, the scarce knowledge on intraspecific and interspecific variability in cell morphology (only about 30 species have been studied cytologically, generally based on up to 30 individuals from single populations; Agatha and Strüder-Kypke 2013) and the lack of an absolute barcode gap in the commonly used molecular markers (Santoferrara et al. 2015) hamper unequivocal separation or lumping of species. Therefore, we encourage comparing as many features as possible (e.g. multiple morphological and molecular parameters, biogeography, ecophysiology), which also maximises the chance of identifying new diagnostic characters. Synonymizations and other nomenclatural changes should never be grounded on weak evidence (e.g. gene phylogenies of species potentially misidentified by their lorica). Taxa reclassifications should only be performed when the diagnoses can be improved by reliable morphological and/or genetic synapomorphies from accurately identified specimens.

### CONCLUSIONS

The “taxonomic impediment,” that is, the decline in taxonomic knowledge together with the number of classical taxonomists, limits the accuracy of species identification and the adequacy of species descriptions and redescrptions. At first glance, it seems desirable to accelerate the pace of species investigations by adopting a “turbo-taxonomy” approach, focussing on a few, easily accessible morphologi-

cal features, which is particularly tempting using the tintinnid lorica. However, in the long run, it might turn out that these rapidly produced data (e.g. during species discovery or DNA barcoding) lack relevant information or cause errors, thereby increasing confusion in taxonomic and ecological work.

Future directions in tintinnid studies should include the integral redescription of type species, which may be difficult to sample even in the type localities, but would enable taxonomic rearrangements needed in several families and genera (Agatha and Strüder-Kypke 2014). Other species of particular interest are the ones from comparatively less studied environments, such as the open ocean. These species are challenging as their low abundances hamper the collection of sufficient material and some of their features are difficult to study during oceanographic expeditions. But even the insufficiently known species that are abundant in coastal waters are worth examination, because they might possess surprising morphological features and can provide useful DNA barcodes. This information is crucial to build accurate, public databases of reference sequences, especially now that tintinnids have started to be tackled using HTS and “-omics” approaches (Bachy et al. 2013; Keeling et al. 2014).

Complementary morphological, molecular, and ecological data are needed to provide key insights, namely, a natural classification system, a reliable evolutionary model, and a deep understating of biogeography and ecological roles (Fig. 1). To facilitate this aim, we provide checklists and recommendations for data collection and evaluation (Boxes S1–S3). The collaboration of experts in different disciplines may be the most productive way to carry out such integrated biodiversity studies.

## ACKNOWLEDGMENTS

We specially thank John Dolan (Laboratoire d’Océanographie de Villefranche-sur-Mer, CNRS Université Paris, Station Zoologique, France) for initiating this paper and bringing together colleagues from different biological disciplines. We also thank George McManus (University of Connecticut, USA) for useful comments.

## LITERATURE CITED

- Agatha, S. & Strüder-Kypke, M. C. 2012. Reconciling cladistic and genetic analyses in choreotrichid ciliates (Ciliophora, Spirotricha, Oligotrichea). *J. Eukaryot. Microbiol.*, 59:325–350.
- Agatha, S. & Strüder-Kypke, M. C. 2013. Systematics and evolution of tintinnid ciliates. In: Dolan, J. R., Montagnes, D. J. S., Agatha, S., Coats, D. W. & Stoecker, D. K. (eds.), *The Biology and Ecology of Tintinnid Ciliates – Models for Marine Plankton*. John Wiley & Sons Ltd, Oxford, Chichester. p. 42–84.
- Agatha, S. & Strüder-Kypke, M. C. 2014. What morphology and molecules tell us about the evolution of Oligotrichea (Alveolata, Ciliophora). *Acta Protozool.*, 53:77–90.
- Alder, V. A. 1999. Tintinninoinea. In: Boltovskoy, D. (ed.), *South Atlantic Zooplankton I*. Backhuys Publishers, Leiden. 1: p. 321–384.
- Bachy, C., Dolan, J. R., López-García, P., Deschamps, P. & Moreira, D. 2013. Accuracy of protist diversity assessments: morphology compared with cloning and direct pyrosequencing of 18S rRNA genes and ITS regions using the conspicuous tintinnid ciliates as a case study. *ISME J.*, 7:244–255.
- Bachy, C., Gómez, F., López-García, P., Dolan, J. R. & Moreira, D. 2012. Molecular phylogeny of tintinnid ciliates (Tintinnida, Ciliophora). *Protist*, 163:873–887.
- Bachy, C., Moreira, D., Dolan, J. R. & López-García, P. 2014. Seasonal dynamics of free-living tintinnid ciliate communities revealed by environmental sequences from the North-West Mediterranean Sea. *FEMS Microbiol. Ecol.*, 87:330–342.
- Bik, H. M., Porazinska, D. L., Creer, S., Caporaso, J. G., Knight, R. & Thomas, W. K. 2012. Sequencing our way towards understanding global eukaryotic biodiversity. *Trends Ecol. Evol.*, 27:233–243.
- Brandt, K. 1906. Die Tintinnodeen der Plankton-Expedition. Tafelerklärungen nebst kurzer Diagnose der neuen Arten. *Ergebn. Plankton-Exped. Humboldt-Stiftung*, 3 La:1–33 + Plates 31–70.
- Brandt, K. 1907. Die Tintinnodeen der Plankton-Expedition. Systematischer Teil. *Ergebn. Plankton-Exped. Humboldt-Stiftung*, 3 La:1–488.
- Caisova, L., Marin, B. & Melkonian, M. 2011. A close-up view on ITS2 evolution and speciation – a case study in the Ulvophyceae (Chlorophyta, Viridiplantae). *BMC Evol. Biol.*, 11:1–24.
- Caron, D. A. 2013. Towards a molecular taxonomy for protists: benefits, risks, and applications in plankton ecology. *J. Eukaryot. Microbiol.*, 60:407–413.
- Coleman, A. W. 2000. The significance of a coincidence between evolutionary landmarks found in mating affinity and a DNA sequence. *Protist*, 151:1–9.
- Dolan, J. R. 2010. Morphology and ecology in tintinnid ciliates of the marine plankton: correlates of lorica dimensions. *Acta Protozool.*, 49:235–244.
- Dolan, J. R. 2015. Planktonic protists: little bugs pose big problems for biodiversity assessments. *J. Plankton Res.* doi: 10.1093/plankt/fbv079:1-8.
- Dolan, J. R., Montagnes, D. J. S., Agatha, S., Coats, D. W. & Stoecker, D. K. 2013. *The biology and ecology of tintinnid ciliates – Models for marine plankton*. Wiley-Blackwell, Chichester, West Sussex. p. 1–296.
- Entz, G. J. 1909. Studien über Organisation und Biologie der Tintinniden. *Arch. Protistenk.*, 15:93–226.
- Foissner, W. 2014. An update of ‘basic light and scanning electron microscopic methods for taxonomic studies of ciliated protozoa’. *Int. J. Syst. Evol. Microbiol.*, 64:271–292.
- Guillou, L., Bachar, D., Audic, S., Bass, D., Berney, C., Bittner, L., Boutte, C., Burgaud, G., de Vargas, C., Decelle, J., del Campo, J., Dolan, J. R., Dunthorn, M., Edvardsen, B., Holzmann, M., Kooistra, W. H. C. F., Lara, E., Le Bescot, N., Logares, R., Mahé, F., Massana, R., Montresor, M., Morard, R., Not, F., Pawlowski, J., Probert, I., Sauvadet, A.-L., Siano, R., Stoeck, T., Vaulot, D., Zimmermann, P. & Christen, R. 2013. The Protist Ribosomal Reference database (PR<sup>2</sup>): a catalog of unicellular eukaryote small sub-unit rRNA sequences with curated taxonomy. *Nucleic Acids Res.*, 41:D597–D604.
- Hada, Y. 1932. Report of the biological survey of Mutsu Bay. 24. The pelagic ciliat, suborder Tintinninoinea. *Sci. Rep. Tohoku Imp. Univ., Ser. 4 Biol.*, 7:553–573.
- ICZN = International Commission of Zoological Nomenclature 1999. International code of zoological nomenclature. Fourth edition adopted by the International Union of Biological Sciences. Tipografia La Garangola, Padova. p. 306.

- Jørgensen, E. 1924. Mediterranean Tintinnidae. *Rep. Danish Ocean. Exped., 1908-1910, Mediterr. Seas, Vol. II (Biol.)*, J3:1-110.
- Keeling, P. J., Burki, F., Wilcox, H. M., Allam, B., Allen, E. E., Amaral-Zettler, L. A., Armbrust, E. V., Archibald, J. M., Bharti, A. K., Bell, C. J., Beszteri, B., Bidle, K. D., Cameron, C. T., Campbell, L., Caron, D. A., Cattolico, R. A., Collier, J. L., Coyne, K., Davy, S. K., Deschamps, P., Dyhrman, S. T., Edvardsen, B., Gates, R. D., Gobler, C. J., Greenwood, S. J., Guida, S. M., Jacobi, J. L., Jakobsen, K. S., James, E. R., Jenkins, B., John, U., Johnson, M. D., Juhl, A. R., Kamp, A., Katz, L. A., Kiene, R., Kudryavtsev, A., Leander, B. S., Lin, S., Lovejoy, C., Lynn, D., Marchetti, A., McManus, G., Nedelcu, A. M., Menden-Deuer, S., Miceli, C., Mock, T., Montresor, M., Moran, M. A., Murray, S., Nadathur, G., Nagai, S., Ngam, P. B., Palenik, B., Pawlowski, J., Petroni, G., Piganeau, G., Posewitz, M. C., Rengefors, K., Romano, G., Rumpho, M. E., Rynearson, T., Schilling, K. B., Schroeder, D. C., Simpson, A. G., Slamovits, C. H., Smith, D. R., Smith, G. J., Smith, S. R., Sosik, H. M., Stief, P., Theriot, E., Twary, S. N., Umale, P. E., Vulot, D., Wawrik, B., Wheeler, G. L., Wilson, W. H., Xu, Y., Zingone, A. & Worden, A. Z. 2014. The Marine Microbial Eukaryote Transcriptome Sequencing Project (MMETSP): illuminating the functional diversity of eukaryotic life in the oceans through transcriptome sequencing. *PLoS Biol.*, 12:e1001889.
- Kofoid, C. A. & Campbell, A. S. 1929. A conspectus of the marine and fresh-water Ciliata belonging to the suborder Tintinninoidea, with descriptions of new species principally from the Agassiz Expedition to the eastern tropical Pacific 1904–1905. *Univ. Calif. Publ. Zool.*, 34:1–403.
- Kofoid, C. A. & Campbell, A. S. 1939. Reports on the scientific results of the expedition to the eastern tropical Pacific, in charge of Alexander Agassiz, by the U. S. Fish Commission Steamer "Albatross," from October, 1904, to March, 1905, Lieut.-Commander L. M. Garrett, U. S. N. Commanding. XXXVII. The Ciliata: The Tintinninoidea. *Bull. Mus. comp. Zool. Harv.*, 84:1-473 + Plates 471-436.
- Laval-Peuto, M. 1981. Construction of the lorica in Ciliata Tintinnina. In vivo study of *Favella ehrenbergii*: variability of the phenotypes during the cycle, biology, statistics, biometry. *Protistologica*, 17:249–272.
- Laval-Peuto, M. & Brownlee, D. C. 1986. Identification and systematics of the Tintinnina (Ciliophora): evaluation and suggestions for improvement. *Ann. Inst. Océanogr., Paris*, 62:69–84.
- Logares, R., Haverkamp, T., Kumar, S., Lanzén, A., Nederbragt, A., Quince, C. & Kausserud, H. 2012. Environmental microbiology through the lens of high-throughput DNA sequencing: synopsis of current platforms and bioinformatics approaches. *J. Microbiol. Methods*, 91:106–113.
- Lynn, D. H. 2008. The ciliated protozoa. Characterization, classification, and guide to the literature. Springer, Dordrecht. p. 1–605.
- Lynn, D. H. & Pinheiro, M. 2009. A survey of polymerase chain reaction (PCR) amplification studies of unicellular protists using single-cell PCR. *J. Eukaryot. Microbiol.*, 56:406–412.
- Lynn, D. H. & Simpson, A. G. B. 2009. From the editors: describing new taxa of unicellular protists. *J. Eukaryot. Microbiol.*, 56:403–405.
- McManus, G. B. & Katz, L. A. 2009. Molecular and morphological methods for identifying plankton: what makes a successful marriage? *J. Plankton Res.*, 31:1119–1129.
- McManus, G. B. & Santoferrara, L. F. 2013. Tintinnids in microzooplankton communities. In: Dolan, J. R., Montagnes, D. J. S., Agatha, S., Coats, D. W. & Stoecker, D. K. (eds.), *The Biology and Ecology of Tintinnid Ciliates – Models for Marine Plankton*. John Wiley & Sons Ltd, Oxford, Chichester. p. 198–213.
- Medinger, R., Nolte, V., Pandey, R., Jost, S., Ottenwälder, B., Schlötterer, C. & Boenigk, J. 2010. Diversity in a hidden world: potential and limitation of next-generation sequencing for surveys of molecular diversity of eukaryotic microorganisms. *Mol. Ecol.*, 19:32–40.
- Pawlowski, J., Audic, S., Adl, S., Bass, D., Belbahri, L., Berney, C., Bowser, S. S., Cepicka, I., Decelle, J., Dunthorn, M., Fiore-Donno, A. M., Gile, G. H., Holzmann, M., Jahn, R., Jirků, M., Keeling, P. J., Kostka, M., Kudryavtsev, A., Lara, E., Lukeš, J., Mann, D. G., Mitchell, E. A., Nitsche, F., Romeralo, M., Saunders, G. W., Simpson, A. G. B., Smirnov, A. V., Spouge, J. L., Stern, R. F., Stoeck, T., Zimmermann, J., Schindler, D. & de Vargas, C. 2012. CBOL protist working group: barcoding eukaryotic richness beyond the animal, plant, and fungal kingdoms. *PLoS Biol.*, 10:e1001419.
- Santoferrara, L. F., Grattepanche, J. D., Katz, L. A. & McManus, G. B. 2014. Pyrosequencing for assessing diversity of eukaryotic microbes: analysis of data on marine planktonic ciliates and comparison with traditional methods. *Environ. Microbiol.*, 16:2752–2763.
- Santoferrara, L. F., Grattepanche, J. D., Katz, L. A. & McManus, G. B. 2016. Patterns and processes in microbial biogeography: do molecules and morphologies give the same answers? *ISME J.*, doi: 10.1038/ismej.2015.224.
- Santoferrara, L. F., McManus, G. B. & Alder, V. A. 2012. Phylogeny of the order Tintinnida (Ciliophora, Spirotrichea) inferred from small- and large-subunit rRNA genes. *J. Eukaryot. Microbiol.*, 59:423–426.
- Santoferrara, L. F., McManus, G. B. & Alder, V. A. 2013. Utility of genetic markers and morphology for species discrimination within the order Tintinnida (Ciliophora, Spirotrichea). *Protist*, 164:24–36.
- Santoferrara, L. F., Tian, M., Alder, V. A. & McManus, G. B. 2015. Discrimination of closely related species in tintinnid ciliates: new insights on crypticity and polymorphism in the genus *Helicostomella*. *Protist*, 166:78–92.
- Strüder-Kypke, M. C. & Lynn, D. H. 2010. Comparative analysis of the mitochondrial cytochrome c oxidase subunit I (COI) gene in ciliates (Alveolata, Ciliophora) and evaluation of its suitability as a biodiversity marker. *Syst. Biodivers.*, 8:131–148.
- Xu, D., Sun, P., Shin, M. K. & Kim, Y. O. 2012. Species boundaries in tintinnid ciliates: a case study – morphometric variability, molecular characterization, and temporal distribution of *Helicostomella* species (Ciliophora, Tintinnina). *J. Eukaryot. Microbiol.*, 59:351–358.
- Zhang, W., Feng, M., Yu, Y., Zhang, C. & Xiao, T. 2012. An illustrated guide to contemporary tintinnids in the world. Science Press, Beijing. xvii + 499 p.

## SUPPORTING INFORMATION

Additional Supporting Information may be found in the online version of this article:

**Box S1.** Morphological data.

**Box S2.** Molecular data.

**Box S3.** Metadata and ecological data.