

1 This is a copy of the accepted paper as submitted for final publication. The final published version  
2 can be found at: <http://onlinelibrary.wiley.com/doi/10.1111/maec.12354/full>

3

4

5

6

7 Eva Cacabelos<sup>1\*</sup>, Gustavo M. Martins<sup>1,2</sup>, Richard Thompson<sup>3</sup>, Afonso C. L. Prestes<sup>1</sup>, José  
8 Manuel N. Azevedo<sup>1</sup>, Ana I. Neto<sup>1</sup>

9

10 **Material type and roughness influence structure of intertidal communities on coastal**  
11 **defences**

12

13 <sup>1</sup>cE3c - Centre for Ecology, Evolution and Environmental Changes / Azorean Biodiversity  
14 Group, and Universidade dos Açores, Departamento de Biologia, 9501-801 Ponta Delgada,  
15 São Miguel, Azores, Portugal.

16 <sup>2</sup>CIIMAR-Centro Interdisciplinar de Investigação Marinha e Ambiental, Rua dos Bragas  
17 289, Porto, Portugal

18 <sup>3</sup>Marine Biology and Ecology Research Centre, Plymouth University, Plymouth PL4 8AA,  
19 Devon, UK

20 \*Corresponding author: e-mail: [evacacabelos@yahoo.es](mailto:evacacabelos@yahoo.es), Tel +351 296 650 102, Fax: +351  
21 296 650 100

22 **Abstract**

23 On a global scale, urbanisation has resulted in substantial proportions of the coast being  
24 replaced by artificial structures such as marinas, breakwaters or seawalls. There is broad  
25 consensus that coastal defence structures are poor surrogates of the natural habitats they  
26 replace. Here we investigate the effect of the type and roughness of materials used for the  
27 construction of artificial structures on the biota by comparing abundances and distribution  
28 of key intertidal taxa between natural shores and coastal defences. Lower abundance of  
29 gastropods and barnacles were found on artificial coastal defence structures (regardless of  
30 the material type). At small–spatial scales, there was a significant effect of roughness which  
31 increased the abundances of key taxa. Results suggest that choice of materials used for the  
32 construction of coastal defence structures *per se* has little effect on community structure,  
33 but that enhanced roughness could make coastal defences better surrogates of natural  
34 habitats by supporting assemblages that are more similar to those found on natural shores.

35 **Keywords:** artificial structures, intertidal assemblages, marine biodiversity, urbanisation,  
36 macroalgae

## 37 **Introduction**

38 The extent of natural coastal habitats converted for urban use, including the construction of  
39 coastal defence structures such as seawalls, breakwaters or groynes, is increasing globally  
40 (Goodsell 2009; Firth *et al.* 2013). This trend is likely to continue, given predictions for sea  
41 level rise and increased storminess (Thompson *et al.* 2002; Wong *et al.* 2014). There is thus  
42 a clear interest in understanding the environmental consequences of these artificial habitats  
43 (Moschella *et al.* 2005), with several studies highlighting the importance of understanding  
44 the underlying ecological processes (Moreira *et al.* 2006; Munari 2013) when planning  
45 developments along shores (Chapman & Bulleri 2003).

46 Construction of artificial structures provides additional hard substrata for epibenthic  
47 organisms. These structures, however, can have a strong effect on the structure and  
48 functioning of flora and fauna assemblages in adjacent hard- or soft-bottom habitats (e.g.  
49 Martin *et al.* 2005; Martins *et al.* 2009; Bertasi *et al.* 2007). Moreover, although epibiotic  
50 communities on artificial structures can be qualitatively similar to those on natural rocky  
51 shores, differences in the diversity, abundance, behaviour and/or phenology of epibiota on  
52 breakwaters, seawalls or groynes have been reported by many authors (e.g. Chapman 2003;  
53 Chapman & Bulleri 2003; Bulleri *et al.* 2004; Moschella *et al.* 2005; Moreira 2006;  
54 Moreira *et al.* 2006; Martins *et al.* 2009; Firth *et al.* 2013). Collectively, these studies  
55 suggest that artificial structures cannot generally be considered surrogates of the natural  
56 habitats they replace.

57 Some studies consider that artificial structures built with locally quarried materials are  
58 likely to have minimal effect on intertidal assemblages, and therefore predict that the

59 epibiotic communities on those structures would be similar to those colonizing nearby  
60 natural rocky habitats (see Thompson *et al.* 2002; Branch *et al.* 2008). However, there is  
61 evidence that this is not always true and differences have been found between assemblages  
62 on natural habitats and artificial structures made of locally quarried rock (see Bulleri &  
63 Chapman 2010, for review). Moreover, current literature on the effects of coastal  
64 urbanisation includes ambiguous results, revealing both positive and negative effects on the  
65 maintenance of local populations. For instance, the outcomes of investigations on the  
66 effects of coastal urbanisation on the distribution of limpets have been variable. Some  
67 authors (Moreira *et al.* 2006; Díaz–Agras *et al.* 2010) found no differences in the  
68 abundance or frequency of occurrence of limpets inhabiting artificial substrata and rocky  
69 shores, while other authors reported greater numbers of limpets on either natural (e.g.  
70 Bulleri & Chapman 2004; Bulleri *et al.* 2004) or artificial structures (Guerra–García *et al.*  
71 2004).

72 Modification of artificial structures to make them better surrogates of natural habitats is a  
73 form of mitigation that is receiving increasing attention (Moreira *et al.* 2007; Chapman and  
74 Blockey 2009; Martins *et al.* 2010; Firth *et al.* 2013). Some attempts to reduce their  
75 ecological impacts have been addressed by adding elements (e.g. wetland vegetation) or  
76 features of habitat (e.g. rock-pools) that are absent from urban structures (Zedler & Leach  
77 1998; Bulleri & Chapman 2010). Natural rocky shores differ from artificial structures in a  
78 number of important features (Chapman and Blockey 2009; Firth *et al.* 2013) namely  
79 differences in material composition and structural roughness, and there is now a substantial  
80 body of work highlighting the important role of substratum heterogeneity in structuring  
81 intertidal communities (Thompson *et al.* 1996; Pinn *et al.* 2008; Griffin *et al.* 2009; Skov *et*

82 *al.* 2011; Gartner *et al.* 2013). Artificial structures generally fail to provide the array and  
83 diversity of habitat heterogeneity found on most natural shores (Chapman 2006; Firth *et al.*  
84 2013; Browne & Chapman 2014). For instance, seawalls generally lack microhabitats such  
85 as rock pools that retain water during low tide allowing the establishment specialist species  
86 (Chapman & Blockley 2009; Firth *et al.* 2013; Browne & Chapman 2014). Likewise,  
87 seawalls or groynes have steep inclinations, which reduce the areal extent of the intertidal  
88 zone compared to the generally gentler slope of natural habitats (Moreira *et al.* 2007;  
89 Bulleri & Chapman 2010). Therefore, we hypothesize that artificial structures with rougher  
90 surfaces, i.e., more similar to natural habitats, will benefit intertidal species, at least those  
91 small-sized which can easily find refuge from the harsh intertidal conditions.

92 The ecological impacts of coastal infrastructure in shallow coastal waters may vary  
93 accordingly with the nature of the surrounding habitat (Bulleri & Chapman 2010). Most of  
94 the research to date has considered coastal defences that lie behind soft sedimentary  
95 shorelines that are at risk from erosion (Gacia *et al.* 2007), thus providing additional hard  
96 surface for colonization by benthic organisms where it was previously absent (Chapman &  
97 Bulleri 2003; Moschella *et al.* 2005). This study was conducted in the Azores, an oceanic  
98 archipelago where volcanic rubble and steep cliffs constitute the most common marine  
99 habitats. In the Azores, most artificial structures are used to protect nearby towns from high  
100 sea levels during winter storms. In contrast to many other locations worldwide, coastal  
101 defences in the Azores are typically built on top of former natural stretches of rocky coasts,  
102 thus showing similarities in physical nature (i.e., hard substrate) to adjacent natural  
103 environments. Therefore, unlike areas where artificial structures are deployed on soft-  
104 bottom areas, we hypothesize that assemblages on most of the Azorean artificial structures

105 will be of similar composition to those found on adjacent natural environments. However,  
106 given the well known effect of substratum type in structuring intertidal assemblages (e.g.  
107 Connell & Glasby 1999; Glasby 1999), the first objective in this study was exactly to  
108 compare patterns of distribution and abundance of intertidal organisms on natural rocky  
109 shores with that of coastal defence structures (boulders and blocks) made of either basalt  
110 (locally quarried rock) or concrete (a non–natural substratum, and probably the most  
111 common material used in coastal urbanisation). We are interested in testing if using rocks  
112 that were locally quarried would somehow minimise the impacts of coastal urbanisation. In  
113 addition to this, we also investigated how natural small-scale variability in substratum  
114 topography (within artificial structures made of basalt) influences the structure of intertidal  
115 assemblages. We predict that areas of the substratum with rougher topography will support  
116 assemblages that differ from those found in areas of the substratum with smoother  
117 topography.

118 This information will help to understand the effects of hard defence structures, and may be  
119 potentially provide information that can be used to mitigate the ecological impacts of  
120 coastal urbanisation (e.g. Martin *et al.* 2005; Moschella *et al.* 2005; Martins *et al.* 2010).

## 121 **Material and Methods**

122 The study was conducted on São Miguel Island (Azores, Fig. 1), where maximum tidal  
123 range is approximately 2 m and the coast is exposed to medium to high levels of wave  
124 action. In general, three zones can be recognized in the São Miguel Island rocky intertidal,  
125 following classical zonation schemes (Stephenson & Stephenson 1972): the low–shore is  
126 characterized by a covering of coarsely branched, coralline and turf–forming species of

127 macroalgae; the mid–shore is dominated by the barnacle *Chthamalus stellatus*, whereas the  
128 gastropod littorinids *Tectarius striatus* and *Melarhaphé neritoides* usually inhabit in the  
129 upper–shore (Martins *et al.* 2008b).

130 To characterize the intertidal assemblage community composition and abundance, sampling  
131 was carried out on natural rocky shores of basaltic nature (hereafter referred to as Natural  
132 shore), and artificial coastal defence structures built of either basalt (hereafter Basalt  
133 artificial structures) or concrete (hereafter Concrete artificial structures) located along the  
134 coastline of São Miguel (176 km perimeter, length 65 km, width 8–15 km) (Fig. 1). Only  
135 the seaward sides of natural and artificial habitats were sampled to standardize for wave  
136 exposure. Five locations representative of the three habitat types (Natural shore, Basalt  
137 artificial structures and Concrete artificial structures) were randomly selected (Fig. 1). All  
138 locations were separated by tens of kilometers and similarly exposed to incoming oceanic  
139 swell. Within each location, five replicate quadrats (25x25 cm) were randomly placed at  
140 least 2 m apart on emergent substrata at low–, mid– and upper–shore levels, visually  
141 determined by the presence of macroalgae, barnacles and littorinid respectively. The  
142 assemblage structure was hence assessed at each level. Percentage cover of sessile  
143 organisms (e.g. macroalgae, barnacles) and bare rock (a measure of unoccupied space)  
144 were obtained following the methodology described in Dethier *et al.* (1993), in which the  
145 abundance of organisms within each of the 25 5x5 cm sub–quadrats (that add up a sampling  
146 quadrat) was assigned a score ranging between 0 (absent) and 4 (100% cover of the sub–  
147 quadrat). Total percentage cover is then estimated by summing the scores of all sub–  
148 quadrats (see Dethier *et al.* 1993 for further details). Macroalgae were identified and  
149 grouped into distinct morpho–functional groups (FGs), based on species’s morphology and

150 the way they compete for resources (Steneck & Dethier 1994; Arenas *et al.* 2006; Veiga *et*  
151 *al.* 2013). The selected FGs were: Ephemerals (considering first colonizers, including  
152 diatomaceous biofilms, microalgae and filamentous algae such as *Chaetomorpha*,  
153 *Cladophora*), Foliose (e.g. *Porphyra*, *Ulva rigida*), Coarsely branched (e.g. *Caulacanthus*  
154 *ustulatus*), Coenocytic (*Codium adhaerens*), Articulated calcareous (e.g. *Corallina*  
155 *elongata*), Leathery (e.g. *Fucus spiralis*), Calcified crustose (e.g. *Lithophyllum*), and Non-  
156 calcified crustose (e.g. *Nemoderma*). Taxa present within quadrats but not reaching a score  
157 of 1 were given a nominal value of 0.5%. Motile invertebrates were identified up to species  
158 level, counted and expressed as number of individuals per quadrat. All surveys were made  
159 between the 24<sup>th</sup> June and 4<sup>th</sup> August 2013, during low-water spring tides.

160 A complementary small-scale study investigated the role of substratum roughness in  
161 determining patterns of species distribution on coastal defence structures by comparing the  
162 abundance of organisms in blocks with smooth and rough surfaces visually selected *a*  
163 *priori* on a basalt seawall at two sites selected 10's of meters apart. Five replicate plots on  
164 smooth *vs.* rough blocks were sampled. In this case, only mid- and upper-shore was  
165 sampled in this survey, since low-shore roughness was hidden by dense macroalgal  
166 dominance. A pin-microrelief method (Vázquez *et al.* 2009) was adapted to measure  
167 substratum random roughness (RR) in the sampled plots. Differences in substratum surface  
168 height were recorded in 15 cm transects with spacing between readings of 2.5 mm, and RR  
169 index was calculated as the standard error among heights (Allmaras *et al.* 1966). This  
170 survey was made between August 12<sup>th</sup> and September 12<sup>th</sup> 2014, during low-water spring  
171 tides. Sampling of the biota was done as described above.

172 Data analysis



173 Multivariate analysis.

174 Differences in the structure of assemblages were investigated for each tidal height using a  
175 two-way permutational analysis of variance (PERMANOVA) with habitat (Ha, fixed, with  
176 three levels: Natural shores, Basalt artificial structures and Concrete artificial structures)  
177 and location (Lo, random, nested in habitat, with five levels) as factors. PERMANOVA  
178 analyses were run on Bray Curtis similarity matrix of both untransformed and presence–  
179 absence transformed complete epibenthic assemblage (i.e. including percentage cover of  
180 macroalgae/barnacles and abundance of gastropods). Pair-wise tests were used to compare  
181 the effects within significant factors.

182 Univariate analysis.

183 The numbers of macroalgal FGs as well as the relative abundance of taxa were compared  
184 among habitats following the same procedure as described before but using, in this case,  
185 traditional analysis of variance. Prior to analyses, Cochran's test was used to detect  
186 heterogeneity of variances and data were transformed where appropriate (Underwood  
187 1997). When homogeneity of data was not achieved after transformation, analyses were run  
188 on the untransformed data but using a more conservative significance level ( $P < 0.01$ )  
189 (Underwood 1997).

190 The role of roughness in determining small-scale patterns of species distribution in hard–  
191 defence structures, namely the abundance of gastropods and the percentage cover of  
192 barnacles, was also investigated using an approach similar to that described above, but  
193 including roughness (Ro, fixed, two levels: Smooth and Rough) and site (Si, random, two  
194 levels) as factors.

195 Multivariate analyses were run using PRIMER 6 statistical package with the  
196 PERMANOVA+ add-on (PRIMER-E, Plymouth Marine Laboratory, UK), whereas  
197 univariate analysis were run using GMAV5 (University of Sydney).

## 198 **Results**

199 Multivariate analysis.

200 Assemblage structure (both on the untransformed, Table 1a, and presence-absence data,  
201 Table 1b) did not differ significantly among habitats (i.e., Natural shore, Concrete and  
202 Basalt artificial structures) on the lower-shore. On the mid-shore, assemblage structure  
203 differed significantly between Natural and Basalt when considering abundance data (Table  
204 1a), but not when considering only compositional data (Table 1b). Significant differences  
205 on the assemblage structure were detected between Natural shores and both artificial  
206 habitats (Concrete and Basalt artificial structures) on the upper-shore, when considering  
207 abundance (Table 1a) but not presence-absence (Table 1b) data.

208 Univariate analysis.

209 The numbers of macroalgal FGs were generally similar among habitats at all tidal levels,  
210 although differences were found among locations ( $P < 0.001$ , Table 2, Fig. 2).

211 At low-shore level, the abundance of macroalgal FG showed no differences among habitats,  
212 although differences were found among locations ( $P < 0.001$ , Table 3, Fig. 3).

213 At mid-shore level, only coarsely branched algae were significantly more abundant on  
214 Natural shores than on artificial reefs (means of 6.0% on Natural vs. 0.8% on Basalt and  
215 0.7% on Concrete artificial structures; Table 3, Fig. 3). The abundance of the remaining

216 functional groups (coenocytic, foliose, articulated calcareous, leathery and calcified and  
217 non-calcified crusts) did not vary significantly among natural shores and basalt and  
218 concrete artificial habitats, although differences were always found among locations (Table  
219 3, Fig. 3). The number of both *M. neritoides* and *T. striatus* was significantly greater on  
220 natural shores than in artificial structures (Table 4, Fig. 4). Mean numbers of littorinids  
221 from 0.08 to 1.6 ind. 0.06 m<sup>-2</sup> were observed on coastal defences, while densities between  
222 10.9 and 12.8 ind. 0.06 m<sup>-2</sup> were observed on natural shores (Fig. 4). The abundance of  
223 *Patella* spp. did not significantly differ between habitats (Fig. 4, Table 4), while the cover  
224 of *C. stellatus*, was significantly greater on Natural shores compared to Basalt artificial  
225 structures (28.3 vs. 5.5 % respectively, Fig. 4, Table 4).

226 Regarding the upper-shore, significant differences were detected among habitats when  
227 considering the percent cover of ephemerals, more abundant on Basalt artificial structures  
228 (0.14%) than in Concrete artificial structures (0.04%, Table 3, Fig. 3). Articulated  
229 calcareous and calcified crusts showed differences among locations ( $P < 0.001$ , Table 3,  
230 Fig. 3), but not among habitats. The abundance of *T. striatus* significantly differed between  
231 habitats (Fig. 4, Table 4), with numbers of 11.8 ind. 0.06 m<sup>-2</sup> in natural shores and 1.5 in  
232 artificial structures. The numbers of the remaining faunal species were similar among  
233 habitats, although differences were found among locations ( $P < 0.05$ , Table 4, Fig. 4).

234 Small-scale effect of substratum roughness.

235 There were significant differences in substratum roughness between the *a priori* selected  
236 smooth vs. rough surfaces, with values of  $0.18 \pm 0.02$  mm (mean  $\pm$  SE,  $n = 20$ ) and  $0.05 \pm$

237 0.01 respectively (ANOVA, Mid-shore:  $F(1,17)$  (pooled) = 16.13,  $P < 0.001$ ; Upper-shore:  
238  $F(1,17)$  (pooled) = 16.22,  $P < 0.001$ ).

239 At mid-shore level, significant differences were found in the mean abundance of *M.*  
240 *neritoides* and *C. stellatus* between rough and smooth blocks although these effects were  
241 site-dependent. *M. neritoides* was significantly more abundant on rough blocks (mean  
242 values of 10.4 in rough vs. 0.10 ind.  $0.06 \text{ m}^{-2}$  in smooth surfaces) at site 1, while *C.*  
243 *stellatus* was significantly more abundant on smooth blocks on both sites (mean cover of  
244 39.4% in smooth vs. 6.8% in rough blocks; Fig. 5, Table 5). The littorinid *T. striatus* was  
245 significantly more abundant on rough surfaces at both the mid- and the upper-shore (mean  
246 number of 12.3 in rough vs. 0.2 ind.  $0.06 \text{ m}^{-2}$  in smooth surfaces on mid- and 16.7 vs. 1.0  
247 ind.  $0.06 \text{ m}^{-2}$  on upper-shore levels; Fig 5, Table 5).

## 248 **Discussion**

249 As we hypothesized, qualitatively similar assemblages of animals and plants were found on  
250 both the coastal defence structures and natural habitats. There were, however, relevant  
251 effects of urbanisation on the abundance of some intertidal organisms. For instance, the two  
252 littorinid species and the cirripid barnacle were substantially (and significantly) less  
253 abundant on the artificial structures. Moreover, this effect was generally similar on defence  
254 structures made of either concrete or basalt suggesting that they were not directly  
255 influenced by the material type of the substratum *per se*. Results from the small-scale study  
256 showed that these species were highly influenced by small-scale variation in roughness.  
257 The lower abundance of littorinids found on artificial structures may thus be related to the  
258 general lack of microtopographic features that are important as habitat for these molluscs.

259 This is in accordance with the wider literature showing that littorinids generally tend to  
260 aggregate around small-scale features of the substratum (Chapman 1995; Jones &  
261 Boulding 1999; Silva *et al.* 2014). Both the physical characteristics of the habitats  
262 (roughness; e.g. Gray and Hodgson 2004) and also the presence of *C. stellatus*, could  
263 provide refuges for this fauna. As observed by other authors (Silva *et al.* 2014), small  
264 gastropods were observed inhabiting the tests of dead barnacles, acting therefore as  
265 biogenic microhabitats (Aguilera *et al.* 2014), altering the complexity of the substratum and  
266 providing shelter and protection from physiological stress to intertidal organisms  
267 (Underwood *et al.* 1983; Jernakoff 1985). Roughness has been also considered an important  
268 variable on barnacle settlement (e.g. Chabot & Bourget 1988; Skinner & Coutinho 2005).  
269 Barnacles had lower abundance on artificial structures (as observed e.g. by Aguilera *et al.*  
270 2014), but in our case, within the artificial structures the effect of roughness contrasted that  
271 found for littorinids (i.e., lower abundance on smooth surfaces). Although we did not  
272 expect biotic or abiotic factors to differ between sites within the artificial shore, e.g.  
273 chemical cues generated by barnacle adults could be influencing our results, since barnacles  
274 are known to respond positively to the presence of conspecifics (Skinner & Coutinho  
275 2005), and we could not separate such effects from those related to roughness.

276 Due to their key role in intertidal assemblages, changes in limpet abundance among habitats  
277 may indirectly influence the distribution of other organisms (Hawkins *et al.* 1992). In the  
278 present study, and in contrast with Bulleri & Chapman (2004) or Bulleri *et al.* (2004),  
279 although natural habitats supported greater densities of limpets than basalt at low-shore  
280 levels, no differences were found on the mid-shore, where limpets are usually more  
281 abundant (Martins *et al.* 2010). In this and other systems (e.g. Oliva & Castilla 1986,

282 Branch & Moreno 1994, Moreno 2001) , substantial harvesting of limpets, a traditionally  
283 important source of income for many families (Ferraz *et al.* 2001; Martins *et al.* 2008a)  
284 may have masked natural patterns of distribution.

285 Generally, no differences were found in the number of macroalgal functional groups among  
286 habitats. However, a lower number of functional groups tended to be found on the upper–  
287 shore on natural shores. These macroalgae vary in consistent ways along physical gradients,  
288 including, e.g., wave exposure and desiccation (Menge 2000). Wave splash operates  
289 vertically, allowing organisms to extend upwards (Ballesteros & Romero 1988; Hobday  
290 1995). In the case of artificial structures, the steep slope may break waves violently against  
291 the artificial structures (Allsop *et al.* 2005), encompassing long–term exposure to waves  
292 (wetting gradient, Chappuis *et al.* 2014). This could directly affect the vertical distribution  
293 of some functional groups, such as calcified and non–calcified crustose algae. Only on the  
294 mid– and upper–shore was the epibenthic assemblage composition of coastal defences  
295 different from natural habitats. Unlike results from Bulleri & Chapman (2004) who found  
296 compositional differences (differences in species identities) in assemblages on seawalls and  
297 adjacent rocky shores, we did not find such compositional differences. In our study system,  
298 differences found between natural shores and artificial structures were largely restricted to  
299 changes in species abundances (not identity).

### 300 Conclusion

301 Information about patterns of distribution of species in natural and artificial habitats is  
302 essential in order to understand the ecological impacts of coastal infrastructures (Bulleri &  
303 Chapman 2010). Some studies have suggest that artificial structures provide habitat for

304 epibiotic communities that are qualitatively similar to those found inhabiting nearby natural  
305 reefs (e.g. Branch *et al.* 2008) but quantitative studies (e.g. Moschella *et al.* 2005; Firth *et*  
306 *al.* 2014), have shown artificial structures have significantly lower abundance of  
307 gastropods, barnacles and coarsely branched algae, indicating some lack of similarity with  
308 natural rocky shores. Our study indicates that roughness, rather than substratum type *per se*,  
309 can play a key role in determining the distribution of barnacles and littorinids. Our results  
310 indicate that selection of materials with rougher surfaces (i.e. enhanced roughness) when  
311 building hard-defence structures may be an effective way to make them more similar to  
312 natural substrata, enabling them to support taxa abundance more similar to those found on  
313 natural shores.

#### 314 **Acknowledgements**

315 Authors are grateful to Maria, Isadora, Cristina, Ruben, Eunice, Nuno, Carlos, Caroline,  
316 Carles, Andreia and Esteban, who helped in the fieldwork. Thanks are also due to Virginie  
317 for helping in both fieldwork and data treatment, and Nuno for his assistance on fieldwork  
318 and map provision. This research was partially supported by the European Regional  
319 Development Fund (ERDF) through the COMPETE – Operational Competitiveness  
320 Programme and national funds through FCT – Foundation for Science and Technology,  
321 under the project “PEst-C/MAR/LA0015/2013, by the Strategic Funding  
322 UID/Multi/04423/2013 through national funds provided by FCT and European Regional  
323 Development Fund (ERDF) in the framework of the programme PT2020, and by cE3c  
324 funding (Ref: UID/BIA/00329/2013). GMM was supported by a postdoctoral grant  
325 awarded by FCT (SFRH/BDP/63040/2009). ACLP was funded by a FRCT research grant  
326 M3.1.5/F/098/2012. Support was also provided by CIRN/UAc (Centre of Natural

327 Resources of University of the Azores). We are also grateful to two anonymous referees for  
328 all their helpful comments and suggestions.

329 **References** Aguilera M.A., Broitman B.R., Thiel M. (2014) Spatial variability in  
330 community composition on a granite breakwater versus natural rocky shores: Lack of  
331 microhabitats suppresses intertidal biodiversity. *Marine Pollution Bulletin*, **87**, 257-268.

332 Allmaras R.R., Burwell R.E., Larson W.E., Holt R.F. (1966) *Total porosity and random*  
333 *roughness of the interrow zone as influenced by tillage*. U.S. Departments of Agriculture.  
334 Conservation Research Report No. 7.

335 Allsop W., Bruce T., Pearson J., Besley P. (2005) Wave overtopping at vertical and steep  
336 seawalls. *Proceedings of the Institution of Civil Engineers Maritime Engineering*, **158**, 103-  
337 114.

338 Anderson M.J., Gorley R.N., Clarke K.R. (2008) *PERMANOVA+ for PRIMER: guide to*  
339 *software and statistical methods*. Primer-E Ltd, Plymouth: 214 pp.

340 Arenas F.A., Sánchez I., Hawkins S.J., Jenkins S.R. (2006) The invasibility of marine algal  
341 assemblages: Role of functional diversity and identity. *Ecology*, **87**(11), 2851-2861.

342 Ballesteros E., Romero J. (1988) Zonation patterns in tideless environments (Northwestern  
343 Mediterranean): looking for discontinuities in species distribution. *Investigación Pesquera*,  
344 **52**(4), 595-616.

345 Bertasi F., Colangelo M.A., Abbiati M., Ceccherelli V.U. (2007) Effects of an artificial  
346 protection structure on the sandy shore macrofaunal community: the special case of Lido di  
347 Dante (Northern Adriatic Sea). *Hydrobiologia*, **586**, 277–290.



348 Branch G.M., Moreno C.A. (1994) Intertidal and subtidal grazers. In: Rocky shores:  
349 exploitation in Chile and South Africa, W.R. Siegfried, ed. Berlin: Springer-Verlag, pp. 75–  
350 100.

351 Branch G.M., Thompson R.C., Crowe T.P., Castilla J.C., Langmead O., Hawkins S.J.  
352 (2008) Rocky intertidal shores: prognosis for the future. In: N.V.C. Polunin (Ed). *Aquatic*  
353 *Ecosystems. Trends and Global Prospects*. Cambridge University Press, Cambridge: 209–  
354 225.

355 Browne M.A., Chapman M.G. (2014) Mitigating against the loss of species by adding  
356 artificial intertidal pools to existing seawalls. *Marine Ecology Progress Series*, **497**, 119-  
357 129.

358 Bulleri F. (2005) Role of recruitment in causing differences between intertidal assemblages  
359 on seawalls and rocky shores. *Marine Ecology Progress Series*, **287**, 53-65.

360 Bulleri F., Chapman M.G. (2004) Intertidal assemblages on artificial and natural habitats in  
361 marinas on the north-west coast of Italy. *Marine Biology*, **145**, 381–391.

362 Bulleri F., Chapman M.G. (2010) The introduction of coastal infrastructure as a driver of  
363 change in marine environments. *Journal of Applied Ecology*, **47**, 26-35.

364 Bulleri F., Chapman M.G., Underwood A.J. (2004) Patterns of movement of the limpet  
365 *Cellana tramoserica* on rocky shores and retaining seawalls. *Marine Ecology Progress*  
366 *Series*, **281**, 121-129.

367 Chabot R., Bourget E. (1988) Influence of substratum heterogeneity and settled barnacle  
368 density on the settlement of cyprids larvae. *Marine Biology*, **97**, 45-56.

369 Chapman M.G. (1995) Aggregation of the littorinid snail *Littorina unifasciata* in New  
370 South Wales, Australia. *Marine Ecology Progress Series*, **126**, 191-202.

371 Chapman M.G. (2003) Paucity of mobile species on constructed seawalls: effects of  
372 urbanization on biodiversity. *Marine Ecology Progress Series*, **264**, 21-29.

373 Chapman M.G. (2006) Intertidal seawalls as habitats for molluscs. *Journal of Molluscan*  
374 *Studies*, **72**(July 2005), 247-257.

375 Chapman M.G., Blockey D.J. (2009) Engineering novel habitats on urban infrastructure to  
376 increase intertidal biodiversity. *Oecologia*, **161**, 625-635.

377 Chapman M.G., Bulleri F. (2003) Intertidal seawalls-new features of landscape in intertidal  
378 environments. *Landscape and Urban Planning*, **62**(3), 159-172.

379 Chappuis E., Terradas M., Cefali M.E., Mariani S., Ballesteros E. (2014) Vertical zonation  
380 is the main distribution pattern of littoral assemblages on rocky shores at a regional scale.  
381 *Estuarine, Coastal and Shelf Science*, **147**, 113-122.

382 Connell S.D., Glasby T.M. (1999) Do urban structure influence local abundance and  
383 diversity of subtidal epibiota? A case study from Sydney Harbour, Australia. *Marine*  
384 *Environmental Research*, **47**, 373-387.

385 Dethier M.N., Graham E.S., Cohen S., Tear L.M. (1993) Visual versus random-point  
386 percent cover estimations: 'objective' is not always better. *Marine Ecology Progress Series*,  
387 **96**, 93-100.

388 Díaz-Agras G., Moreira J., Tato R., García-Regueira X. (2010) Distribution and population  
389 structure of *Patella Vulgata* Linnaeus, 1758 (Gastropoda: Patellidae) on intertidal seawalls  
390 and rocky shores in the ría de Ferrol (Galicia, NW Iberian Peninsula). *Thalassas*, **26**(2), 79-  
391 91.

392 Ferraz R.R., Meneses G.M., Santos R.S. (2001) Limpet (*Patella* spp.) (Mollusca:  
393 Gastropoda) exploitation in the Azores during the period 1993–1998. *Arquipélago, Life and*  
394 *Marine Sciences Suppl. 2* (Part B), 59-65.

395 Firth L.B., Thompson R.C., Bohn K., Abbiati M., Airoidi L., Bouma T.J., Bozzeda F.,  
396 Ceccherelli V.U., Colangelo M.A., Evans A., Ferrario F., Hanley M.E., Hinz H., Hoggart  
397 S.P.G., Jackson J.E., Moore P., Morgan E.H., Perkol-Finkel S., Skov M.W., Strain E.M.,  
398 van Belzen J., Hawkins S.J. (2014) Between a rock and a hard place: Environmental and  
399 engineering considerations when designing coastal defence structures. *Coastal*  
400 *Engineering*, **87**, 122-135.

401 Firth L.B., Thompson R.C., White F.J., Schofield M., Skov M.W., Hoggart S.P.G., Jackson  
402 J., Knights A.M., Hawkins S.J. (2013) The importance of water-retaining features for  
403 biodiversity on artificial intertidal coastal defence structures. *Diversity and Distributions*,  
404 **19**(10), 1275-1283.

405 Gacia E., Satta M.P., Martin D. (2007) Low crested coastal defence structures on the  
406 Catalan coast of the Mediterranean Sea: how they compare with natural rocky shores.  
407 *Scientia Marina*, **71**(2), 259-267.

408 Gartner A., Tuya F., Lavery P.S., McMahon K. (2013) Habitat preferences of  
409 macroinvertebrate fauna among seagrasses with varying structural forms. *Journal of*  
410 *Experimental Marine Biology and Ecology*, **439**, 143-151.

411 Glasby T.M. (1999) Differences between subtidal epibiota on pier pilings and rocky reefs at  
412 marinas in Sydney, Australia. *Estuarine, Coastal and Shelf Science*, **48**, 281-290.

413 Goodsell P.J. (2009) Diversity in fragments of artificial and natural marine habitats. *Marine*  
414 *Ecology Progress Series*, **384**, 23-31.

415 Gray D.R., Hodgson A.N. (2004) The importance of a crevice environment to the limpet  
416 *Helcion pectunculus* (Patellidae). *Journal of Molluscan Studies*, **70**(1), 67-72.

417 Griffin J.N., Jenkins S.R., Gamfeldt L., Jones D., Hawkins S.J., Thompson R.C. (2009)  
418 Spatial heterogeneity increases the importance of species richness for an ecosystem  
419 process. *Oikos*, **118**, 1335-1342.

420 Guerra-García J.M., Corzo J., Espinosa F., Fa D., García-Gómez J.C. (2004) Extinction risk  
421 and harbours as marine reserves? *Journal of Molluscan Studies*, **70**, 96-98.

422 Hawkins SJ, Hartnoll RG, Kain JM, Norton TA (1992) Plant-animal interactions on hard  
423 substrata in the north-east Atlantic. In: D.M. John, S.J. Hawkins & J.H. Price (Eds). *Plant-*  
424 *animal interactions in the marine benthos*. Oxford University Press, Oxford: 1–32.

425 Hobday A. (1995) Body-size variation exhibited by an intertidal limpet: Influence of wave  
426 exposure, tidal height and migratory behavior. *Journal of Experimental Marine Biology*  
427 *and Ecology*, **189**, 29–45.

428 Jernakoff P. (1985) An experimental evaluation of the influence of barnacles, crevices and  
429 seasonal patterns of grazing on algal diversity and cover in an intertidal barnacle zone.  
430 *Journal of Experimental Marine Biology and Ecology*, **88**, 287–302.

431 Jones K.M.M., Boulding E.G. (1999) State-dependent habitat selection by an intertidal  
432 snail: the costs of selecting a physically stressful microhabitat. *Journal of Experimental*  
433 *Marine Biology and Ecology*, **242**(2), 149-177.

434 Martin D., Bertasi F., Colangelo M.A., de Vries M., Frost M., Hawkins S.J., Macpherson  
435 E., Moschella P.S., Satta M.P., Thompson R.C., Ceccherelli V.U. (2005) Ecological impact  
436 of coastal defence structures on sediment and mobile fauna: Evaluating and forecasting  
437 consequences of unavoidable modifications of native habitats. *Coastal Engineering*, **52**,  
438 1027–1051.

439 Martins G.M., Amaral A.F., Wallenstein F.M., Neto A.I. (2009) Influence of a breakwater  
440 on nearby rocky intertidal community structure. *Marine Environmental Research*, **67**, 237-  
441 245.

442 Martins G.M., Jenkins S.R., Hawkins S.J., Neto A.I., Thompson R.C. (2008a) Exploitation  
443 of rocky intertidal grazers: population status and potential impacts on community structure  
444 and functioning. *Aquatic Botany*, **3**, 1-10.

445 Martins G.M., Thompson R.C., Hawkins S.J., Neto A.I., Jenkins S.R. (2008b) Rocky  
446 intertidal community structure in oceanic islands: scales of spatial variability. *Marine*  
447 *Ecology Progress Series*, **356**, 15-24.

448 Martins G.M., Thompson R.C., Neto A.I., Hawkins S.J., Jenkins S.R. (2010) Enhancing  
449 stocks of the exploited limpet *Patella candei* d'Orbigny via modifications in coastal  
450 engineering. *Biological Conservation*, **143**, 203-211.

451 Menge B.A. (2000) Top-down and bottom-up community regulation in marine rocky  
452 intertidal habitats. *Journal of Experimental Marine Biology and Ecology*, **250**, 257-289.

453 Moreira J. (2006) Patterns of occurrence of grazing molluscs on sandstone and concrete  
454 seawalls in Sydney Harbour (Australia). *Molluscan Research*, **26**(1), 51-60.

455 Moreira J., Chapman M.G., Underwood A.J. (2006) Seawalls do not sustain viable  
456 populations of limpets. *Marine Ecology Progress Series*, **322**, 179-188.

457 Moreira J., Chapman M.G., Underwood A.J. (2007) Maintenance of chitons on seawalls  
458 using crevices on sandstone blocks as habitat in Sydney Harbour, Australia. *Journal of*  
459 *Experimental Marine Biology and Ecology*, **347**, 134-143.

460 Moreno C.A (2001) Community patterns generated by human harvesting on Chilean  
461 shores: a review. *Aquatic Conservation: Marine and Freshwater Ecosystems*, **11**, 19-30.

462 Moschella P.S., Abbiati M., Aberg P., Airolidi L., Anderson J.M., Bacchiocchi F., Bulleri  
463 F., Dinesen G.E., Frost M., Gacia E., Granhag L., Johnson P.R., Satta M.P., Sundelöf A.,  
464 Thompson R.C., Hawkins S.J. (2005) Low-crested coastal defence structures as artificial  
465 habitats for marine life: using ecological criteria in design. *Coastal Engineering*, **52**, 1053-  
466 1071.

467 Munari C. (2013) Benthic community and biological trait composition in respect to  
468 artificial coastal defence structures : A study case in the northern Adriatic Sea. *Marine*  
469 *Environmental Research*, **90**, 47-54.

470 Oliva D, Castilla JC. (1986) The effect of human exclusion on the population structure of  
471 key-hole limpets *Fissurella crassa* and *F. limbata* on the coast of Central Chile. *Marine*  
472 *Ecology*, **7(3)**, 201-217.

473 Pinn E.H., Thompson R.C., Hawkins S.J. (2008) Piddocks (Mollusca: Bivalvia:  
474 Pholadidae) increase topographical complexity and species diversity in the intertidal.  
475 *Marine Ecology Progress Series*, **355**, 173-182.

476 Silva A.C.F., Mendonça V., Paquete R., Barreiras N., Vinagre, C. (2014) Habitat provision  
477 of barnacle tests for overcrowded periwinkles. *Marine Ecology*, doi: 10.1111/maec.12161.

478 Skinner L.F., Coutinho R. (2005) Effect of Microhabitat Distribution and Substrate  
479 Roughness on Barnacle *Tetraclita stalactifera* (Lamarck, 1818) Settlement. *Brazilian*  
480 *Archives of Biology and Technology*, **48(1)**, 109-113.

481 Skov M.W., Hawkins S.J., Volkelt-Igoe M., Pike J., Thompson R.C., Patrick Doncaster C.  
482 (2011) Patchiness in resource distribution mitigates habitat loss: insights from high-shore  
483 grazers. *Ecosphere*, **2(5)**, 1-17.

484 Steneck R.S., Dethier M.N. (1994) A functional group approach to the structure of algal-  
485 dominated communities. *Oikos*, **69(3)**, 476-498.

486 Stephenson T.A., Stephenson A. (1972) *Life between tide marks on rocky shores*. WH  
487 Freeman (Ed). San Francisco: 425 pp.

488 Thompson R.C., Crowe T.P., Hawkins S.J. (2002) Rocky intertidal communities: past  
489 environmental changes, present status and predictions for the next 25 year. *Environmental*  
490 *Conservation*, **29**(2), 168-191.

491 Thompson R.C., Wilson B.J., Tobin M.L., Hill A.S., Hawkins S.J. (1996) Biologically  
492 generated habitat provision and diversity of rocky shore organisms at a hierarchy of spatial  
493 scales. *Journal of Experimental Marine Biology and Ecology*, **202**, 73-84.

494 Underwood A.J. (1997). *Experiments in ecology: their logical design and interpretation*  
495 *using analysis of variance*. Cambridge University Press, Cambridge: 509 pp.

496 Underwood A.J., Denley E.J., Moran M.J. (1983) Experimental analysis of the structure  
497 and dynamics of mid-shore rocky intertidal communities in New South Wales. *Oecologia*,  
498 **56**, 202-219.

499 Veiga P., Rubal M., Vieira P., Arenas F., Sousa-Pinto I. (2013) Spatial variability in  
500 intertidal macroalgal assemblages on the north Portuguese coast: consistence between  
501 species and functional group approaches. *Helgoland Marine Research*, **67**, 191-201.

502 Vázquez E.V., Vieira S.R., De Maria I.C., González A.P. (2009) Geostatistical analysis of  
503 microrelief of an oxisol as a function of tillage and cumulative rainfall. *Scientia Agricola*  
504 *(Piracicaba, Braz.)*, **66**(2), 225-232.

505 Wong P.P., Losada I.J., Gattuso J.-P., Hinkel J., Khattabi A., McInnes K.L., Saito Y.,  
506 Sallenger A. (2014) Coastal systems and low-lying areas. In: C.B. Field, V.R. Barros, D.J.  
507 Dokken, K.J. Mach, M.D. Mastrandrea, T.E. Bilir, M. Chatterjee, K.L. Ebi, Y.O. Estrada,  
508 R.C. Genova, B. Girma, E.S. Kissel, A.N. Levy, S. MacCracken, P.R. Mastrandrea, L.L.



509 White (Eds). Climate Change 2014: Impacts, Adaptation, and Vulnerability. Part A: Global  
510 and Sectoral Aspects. Contribution of Working Group II to the Fifth Assessment Report of  
511 the Intergovernmental Panel on Climate Change, Cambridge University Press, Cambridge,  
512 United Kingdom and New York, NY, USA: 361-409.

513 Zedler J.B., Leach M.K. (1998) Managing urban wetlands for multiple use: research,  
514 restoration, and recreation. *Urban Ecosystems*, 2, 189-204.

515

516

517

518

519

520

521

522

523

524

525

526

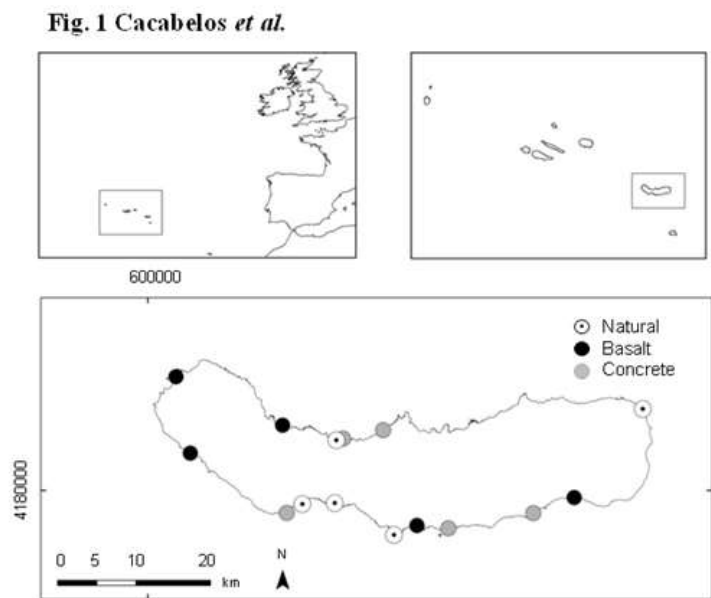
527

528

529

530 **Figures**

531 **Fig. 1** Sampling locations on Natural shores and Basalt and Concrete artificial structures  
532 around São Miguel (Azores).



533

534

535

536

537

538

539

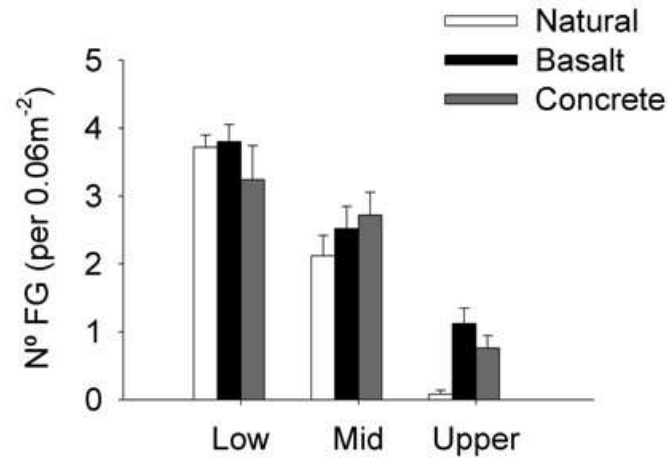
540

541

542

543 **Fig. 2** Macroalgal morpho-functional groups (mean number + SE,  $n = 25$ ) on Natural  
544 shores and Basalt and Concrete artificial structures at different intertidal levels.

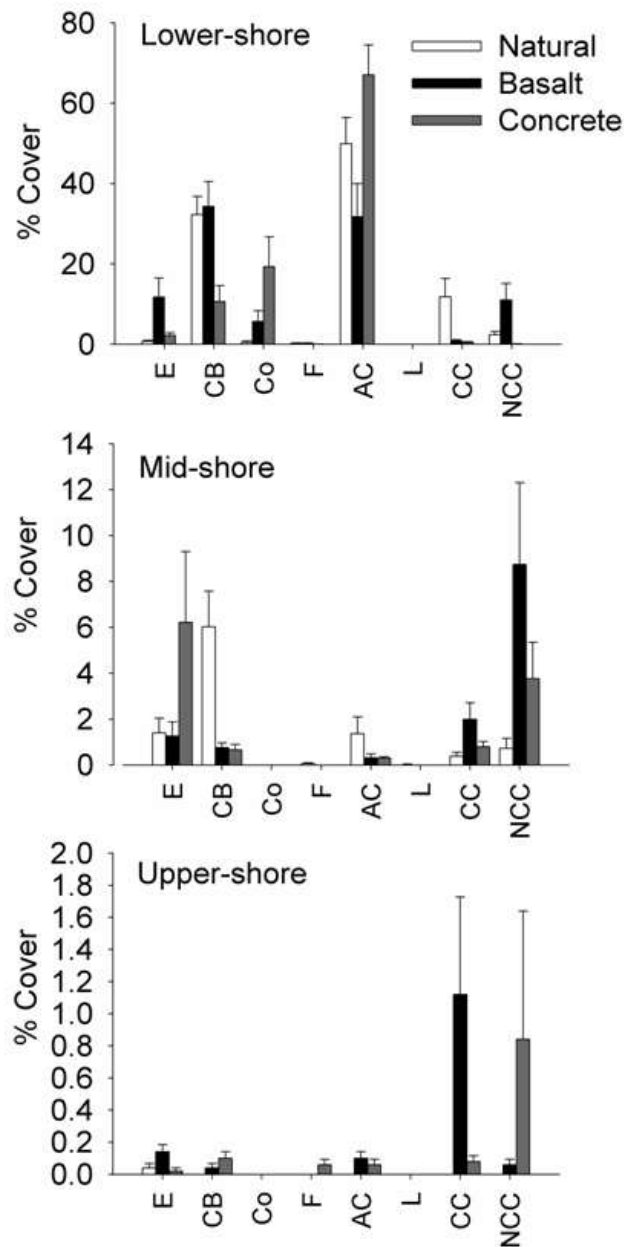
**Fig. 2. Cacabelos et al.**



545  
546  
547  
548  
549  
550  
551  
552  
553  
554  
555  
556  
557  
558

559 **Fig. 3** Covers of macroalgal morpho-functional groups (mean + SE,  $n = 25$ ) associated  
 560 with Natural shores and Basalt and Concrete artificial structures at different intertidal levels  
 561 (E, Ephemeral Algae; CB, Coarsely branched; Co, Coenocytic; F, Foliose; AC, Articulated  
 562 calcareous; L, Leathery; CC, Calcified crustose, NCC, Non-calcified crustose).

**Fig. 3. Cacabelos et al.**

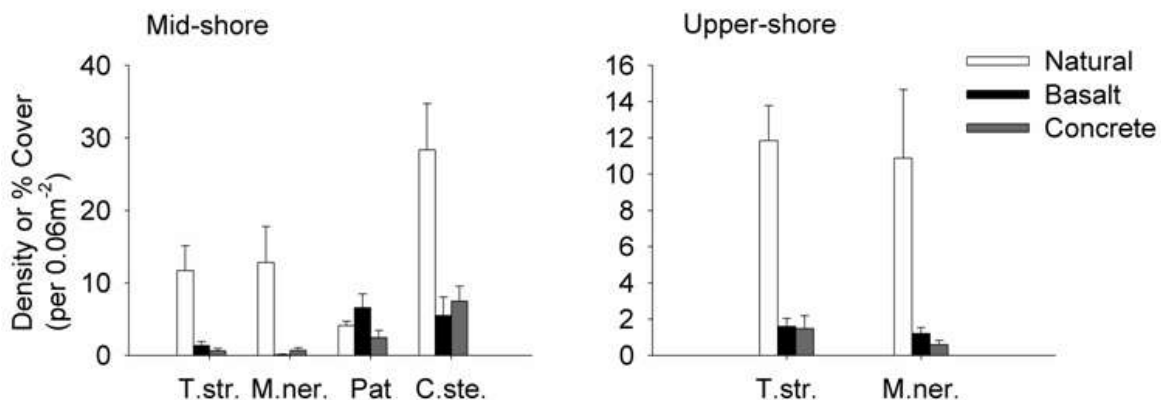


563

564

565 **Fig. 4** Gastropod (mean number + SE,  $n = 25$ ) and barnacle (percent cover + SE)  
 566 abundance associated with Natural shores and Basalt and Concrete artificial structures at  
 567 mid- and upper-shore (molluscs: T.str, *T. striatus*; M.ner., *M. neritoides*; Pat, *Patella* spp.;  
 568 barnacle *C. stellatus*, *C.ste.*).

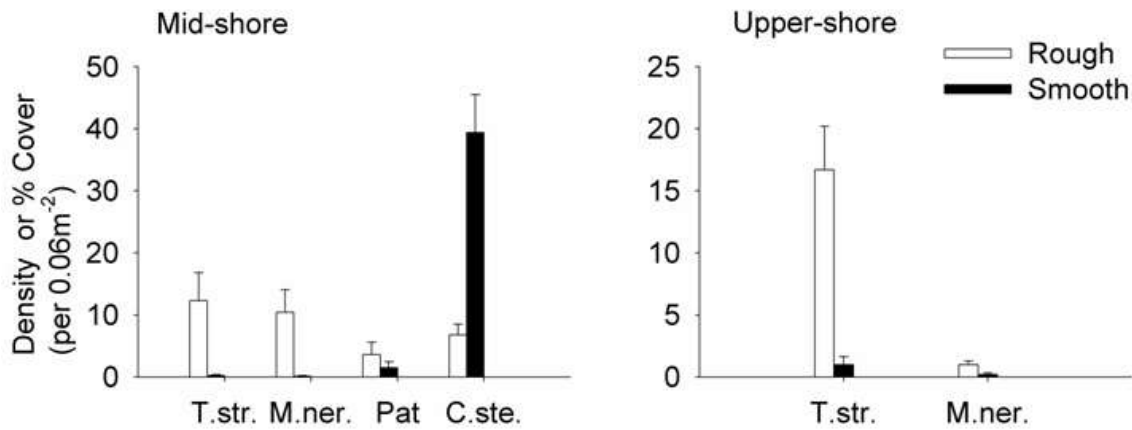
**Fig. 4. Cacabelos et al.**



569  
 570  
 571  
 572  
 573  
 574  
 575  
 576  
 577  
 578  
 579  
 580  
 581  
 582  
 583

584 **Fig. 5** Gastropod (mean number + SE,  $n = 10$ ) and barnacle (percent cover + SE)  
 585 abundance associated with rough and smooth surfaces at mid- and upper-shore (molluscs:  
 586 T.str, *T. striatus*; M.ner., *M. neritoides*; Pat, *Patella* spp.; barnacle *C. stellatus*, C.ste.).

**Fig. 5. Cacabelos et al.**



587  
 588  
 589  
 590  
 591  
 592  
 593  
 594  
 595  
 596  
 597  
 598  
 599  
 600

601 **Table 1** Two-way PERMANOVA comparing a) untransformed and b) presence/absence  
 602 transformed assemblage structure data (including numbers of gastropods and percentage  
 603 cover of macroalgal functional groups and *C. stellatus*) among habitats (N Natural shore, B  
 604 Basalt artificial structure, C Concrete artificial structure) and locations (five per habitat, see  
 605 in Fig. 1) at different intertidal levels.\*\*\*  $P < 0.001$ , \*\*  $P < 0.01$ , \*  $P < 0.05$ .

		Low-shore			Mid-shore		Upper-shore	
	Source	df	MS	<i>Pseudo-F</i>	MS	<i>Pseudo-F</i>	MS	<i>Pseudo-F</i>
	Habitat	2	13146.0	1.59	13478.0	1.74*	21666.0	4.15**
a)	Location(Habitat)	12	8291.0	12.47***	7730.1	4.03***	5218.8	4.62***
	Residual	60	665.2		1917.8		1130.4	
	Total	74						
	Pair-wise comparisons					N diff. B*		N diff. B** N diff. C**
	Habitat	2	9033.2	1.70	9687.7	1.77	8696.0	1.92
b)	Location(Habitat)	12	5321.2	6.74***	5480.6	5.25***	4525.9	4.95***
	Residual	60	789.9		1044.4		913.9	
	Total	74						

606

607

608

609

610

611

612

613

614

615

616

617

618

619

620 **Table 2** Two-way ANOVA comparing the numbers of macroalgal morpho-functional  
 621 groups among habitats (Natural shore, Basalt artificial structure, Concrete artificial  
 622 structure) and locations at different intertidal levels.\*\*\*  $P < 0.001$ , \*\*  $P < 0.01$ , \*  $P < 0.05$ .

Source	df	Low-shore		Mid-shore		Upper-shore	
		MS	<i>F</i>	MS	<i>F</i>	MS	<i>F</i>
Habitat	2	2.29	0.49	0.03	0.07	0.90	3.25
Location(Habitat)	12	4.63	4.96***	0.37	4.24***	0.28	5.16***
Residual	60	0.93				0.05	
Total	74						
Cochran's test		ns, 0.1786		ns, 0.2303		ns, 0.232	
Transformation		None		X <sup>0.1</sup>		Sqrt(X+1)	

623

624

625

626

627

628

629

630

631

632

633

634

635

636

637

638

639

640



641 **Table 3** Two-way ANOVA comparing the cover of macroalgal morpho-functional groups  
 642 among Habitats (Natural shores N, Basalt artificial structure B and Concrete artificial  
 643 structure C) at different intertidal levels. E, Ephemerals; CB, Coarsely branched; Co,  
 644 Coenocytic; F, Foliose; AC, Articulated calcareous; L, Leathery; CC, Calcified crustose,  
 645 NCC, Non-calcified crustose.\*\*\*  $P < 0.001$ , \*\*  $P < 0.01$ , \*  $P < 0.05$ . Natural (N).

		Low-shore		Mid-shore		Upper-shore		
		df	MS	<i>F</i>	MS	<i>F</i>	MS	<i>F</i>
	Habitat	2	0.56	0.50	0.39	0.45	0.10	4.77*
	Location(Habitat)	12	1.12	7.03***	0.85	4.04***	0.02	0.76
	Residual	60	0.16		0.19		0.03	
	Total	74						
	Cochran's test		ns, 0.1856		ns, 0.1425		ns, 0.1765	
E	Transformation		X <sup>0.1</sup>		X <sup>0.1</sup>		None	
	Pair-wise comparisons							B diff. C*
	Habitat	2	4320.10	2.93	8.11	7.82**	0.06	2.11
	Location(Habitat)	12	1473.90	3.27***	1.03	2.40*	0.03	1.64
	Residual	60	450.28				0.02	
	Total	74						
	Cochran's test		ns, 0.2037		ns, 0.2391		$P < 0.05$ , 0.2727	
CB	Transformation		None		Ln(X+1)		None	
	Pair-wise comparisons				N diff. B*			N diff. C*
	Habitat	2	2380.3	0.84				
	Location(Habitat)	12	2846.7	44.67***				
	Residual	60	63.7					
	Total	74						
	Cochran's test		$P < 0.01$ , 0.5898					
Co	Transformation		None					
	Habitat	2	0.24	0.40	0.03	1		
	Location(Habitat)	12	0.61	4.45***	0.03	6**		
	Residual	60	0.14		0.01			
	Total	74						
	Cochran's test		$P < 0.01$ , 0.6341		$P < 0.01$ , 1.000			
F	Transformation		None		None			
	Habitat	2	7816.6	1.16	0.44	0.67	0.06	0.79
AC	Location(Habitat)	12	6719.6	21.72***	0.66	4.61***	0.08	9.86***

	Residual	60		309.3		0.14		0.12
	Total	74						
	Cochran's test			ns, 0.2397		ns, 0.1543		$P < 0.01$ , 0.4286
	Transformation			None		$X^{0.1}$		None
	Habitat	2		13.52	1.02	17.67	2.15	9.76
	Location(Habitat)	12		13.23	98.5***	8.21	1.97*	6.50
	Residual	60		0.13		4.18		2.40
	Total	74						
	Cochran's test			ns, 0.2174		ns, 0.4581		$P < 0.01$ , 0.9806
CC	Transformation			Sqrt(X+1)		None		None
	Habitat	2		1.84	1.98	2.09	2.14	5.49
	Location(Habitat)	12		0.93	6.17***	0.98	6.43***	5.89
	Residual	60		0.15		0.15		5.22
	Total	74						
	Cochran's test			ns, 0.1427		ns, 0.1923		$P < 0.01$ , 0.9981
NCC	Transformation			$X^{0.1}$		$X^{0.1}$		None

646

647

648

649

650

651

652

653

654

655

656

657

658

659

660

661 **Table 4** Two-way ANOVA comparing the numbers of faunal species (density of *T.*  
662 *striatus*, *M. neritoides* and *Patella* spp. and percent cover of *C. stellatus*) among habitats  
663 (Natural shores N, Basalt artificial structure B and Concrete artificial structure C) and  
664 locations at different intertidal levels.\*\*\*  $P < 0.001$ , \*\*  $P < 0.01$ , \*  $P < 0.05$ .

		Mid-shore			Upper-shore	
		df	MS	<i>F</i>	MS	<i>F</i>
<i>T. striatus</i>	Habitat	2	15.96	6.89**	25.43	18.42**
	Location(Habitat)	12	2.32	3.30**	31.38	3.60**
	Residual	60	0.70		0.38	
	Total	74				
	Cochran's test		ns, 0.1918		ns, 0.2141	
	Transformation		Ln(x+1)		Ln(x+1)	
	Pair-wise comparisons			N diff. B* N diff. C*		N diff. B** N diff. C***
<i>M. neritoides</i>	Habitat	2	2.28	3.84*	0.91	0.79
	Location(Habitat)	12	0.60	3.57**	1.15	7.11***
	Residual	60	0.17		0.16	
	Total	74				
	Cochran's test		ns, 0.1905		ns, 0.1377	
	Transformation		X <sup>0.1</sup>		X <sup>0.1</sup>	
	Pair-wise comparisons			N diff. B* B diff. C*		
<i>C. stellatus</i>	Habitat	2	17.25	4.66*	0.11	0.16
	Location(Habitat)	12	3.70	5.39***	0.70	4.97***
	Residual	60	0.69		0.14	
	Total	74				
	Cochran's test		ns, 0.2250		ns, 0.1122	
	Transformation		Ln(X+1)		X <sup>0.1</sup>	
	Pair-wise comparisons			N diff. B*		
		Mid-shore			Low-shore	
		df	MS	<i>F</i>	MS	<i>F</i>
<i>Patella</i> spp.	Habitat	2	3.07	0.94	0.05	0.17
	Location(Habitat)	12	3.28	4.52***	0.31	2.57*
	Residual	60	0.73		0.12	
	Total	74				
	Cochran's test		ns, 0.1873		ns, 0.1866	
	Transformation		Ln(X+1)		X <sup>0.1</sup>	

665

666

667 **Table 5** Two-way ANOVA comparing the numbers of faunal species (density of *T.*  
 668 *striatus*, *M. neritoides* and *Patella* spp. and percent cover of *C. stellatus*) between  
 669 roughness (Smooth surface S, Rough surface R) and sites (Site 1, S1; Site 2, S2) at different  
 670 intertidal levels.\*\*\*  $P < 0.001$ .

	Source	df	Mid-shore		Upper-shore	
			MS	<i>F</i>	MS	<i>F</i>
<i>T. striatus</i>	Roughness	1	17.02	18.35***	35.81	28.84***
	Site	1	0.84	0.91	0.27	0.22
	Pooled Data	17	0.93		1.24	
	Total	19				
	Cochran's test		ns, 0.5710		ns, 0.5099	
	Transformation		Ln(x+1)		sqrt(x+1)	
<i>M. neritoides</i>	Roughness	1	3.98	4.46		
	Site	1	0.25	1.67		
	Roughness x Site	1	0.89	6.05*		
			(S1, R>S***; S2, R=S)			
	Residual	16	0.15			
	Total	19				
	Cochran's test		ns, 0.4034			
	Transformation		X <sup>0.1</sup>			
<i>Patella</i> spp.	Roughness	1	22.05	0.84		
	Site	1	4.05	0.15		
	Pooled Data	17	26.40			
	Total	19				
	Cochran's test		ns, 0.4715			
	Transformation		None			
<i>C. stellatus</i>	Roughness	1	5313.80	6.69		
	Site	1	405.00	2.71		
	Roughness x Site	1	793.80	5.32*		
			(S1, R<S*; S2, R<S***)			
	Residual	16	149.20			
	Total	19				
	Cochran's test		ns, 0.4871			
	Transformation		None			

671