

The impact of CO₂ emissions on ‘nuisance’ marine species

Jason M Hall-Spencer
Ro Allen

Marine Biology and Ecology Research
Centre, School of Marine Science
and Engineering, Plymouth University,
Plymouth, Devon, UK



Correspondence: Jason M Hall-Spencer
Marine Biology and Ecology Research
Centre, Plymouth University, Plymouth,
Devon PL4 8AA, UK
Email jason.hall-spencer@plymouth.ac.uk

Abstract: Anthropogenic CO₂ emissions are being taken up from the atmosphere by the oceans, increasing the availability of dissolved inorganic carbon but reducing both the carbonate saturation and pH of seawater. This ocean acidification affects biological processes in a wide range of marine taxa. Here, we assess the likely responses of ‘nuisance’ species to ocean acidification, meaning those organisms that have undesirable effects from a human perspective. Based on a synthesis of evidence available to date, we predict increased growth and toxicity in harmful algal bloom species, and a significant increase in invasive algae in response to increased CO₂ availability. Blooms of stinging jellyfish are also expected to increase since they are highly resilient to acidification. The effects of ocean acidification on invasive molluscs (eg, oyster drills), damaging echinoderms (eg, crown-of-thorns starfish), and a wide range of nuisance taxa will vary depending on species and location. In the USA, for example, the invasive crab *Carcinus maenas* is resilient to projected increases in CO₂ and its impact on marine communities is expected to increase since it feeds on organisms that respond to ocean acidification with weaker defensive traits and lower recruitment. Conversely, the Red King Crab, *Paralithodes camtschaticus*, is adversely affected by acidification and so is expected to die back in the Barents Sea which it has invaded. Overall, we suspect that there will be an increase in nuisance species, as many have traits that are resilient to the combined warming and acidification caused by rising CO₂ levels; region-specific assessments are needed to understand responses of nuisance species in local habitats. Finally, we highlight the need for targeted studies of the effects of global change on particularly harmful marine taxa such as the seaweed *Caulerpa taxifolia*, the starfish *Asterias amurensis*, several invasive ascidians, and the lionfish *Pterois volitans*.

Keywords: ocean acidification, anthropocene, multiple impacts, harmful algal blooms, invasive species

Introduction

In 2013, atmospheric carbon dioxide reached 400 ppm at the long-term monitoring station of Mauna Loa, higher than at any time in the past 800,000 years and up from 280 ppm in the pre-industrial period of the 1700s.¹ This rapid increase in atmospheric CO₂ levels is causing ocean acidification, since 30% of human CO₂ emissions have been absorbed by surface waters, driving down seawater pH and making it increasingly corrosive to calcium carbonate.²

A rapidly growing body of research indicates that ocean acidification will severely disrupt marine ecosystems, since it alters the balance of success between competing organisms.³ Ocean acidification can impact a wide range of processes across marine taxa, including photosynthesis, acid-base homeostasis, calcification, and behavior.⁴⁻⁷

Dissolved inorganic carbon is a resource for photosynthesis, and so increases in CO_2 can benefit groups such as diatoms, brown algae, and seagrasses.^{8,9} Falling carbonate saturation is expected to degrade biogenic reef habitats and negatively impact calcified organisms.^{10–13} Organisms incapable of acid-base homeostasis may suffer metabolic depression, while those that are capable of regulation incur associated energetic costs.⁵ Observations show that there will be winners as well as losers as the oceans acidify, just as there were in previous high- CO_2 mass extinction events.^{6,14} There is also a growing realization that secondary effects, mediated through changes in habitat and species' interactions, will drive ecosystem change.¹⁵

Syntheses of the effects of ocean acidification have focused on key groups, such as photosynthetic organisms or on commercially important species, and show that even closely related species can have very different responses to ocean acidification.^{9–16} Over-arching meta-analyses conclude that ocean acidification will drive substantial changes in marine ecosystems and cause long-term biogeographic shifts because some organisms gain a competitive advantage over others.^{5,13} We were prompted to undertake this review since we have noticed that invasive algae and jellyfish thrive as CO_2 levels ramp up around volcanic seeps in the Mediterranean (Figures 1 and 2). Here, we consider the possibility that ocean acidification may preferentially benefit 'nuisance' organisms, ie, those organisms that have undesirable effects from a human perspective. Such organisms include invasive species, which are ecologically disruptive non-native organisms, as well as native organisms such as harmful algal blooms, jellyfish swarms, and crown-of-thorn starfish outbreaks. Given that ocean acidification is occurring alongside other stressors, such as global warming and eutrophication,¹⁷ we

include those investigations that consider these combined drivers of global change.

Algae

Algae can benefit from ocean acidification since increased availability of CO_2 and HCO_3^- can stimulate photosynthesis.¹⁸ As some primary producers are better able to capitalize on increasing carbon availability than others, this is expected to alter marine communities.^{15,19} Invasive algae are expected to benefit in competitive interactions under acidified conditions since they tend to be non-calcareous, have wide thermal and salinity tolerances, are highly fecund, grow rapidly, and are often parthenogenic.⁹ As an example, elevated CO_2 is expected to extend the range of the invasive warm water alga *Neosiphonia harveyi* since experiments have shown that the increased availability of dissolved inorganic carbon allows this seaweed to cope with colder temperatures, so it is expected to extend into higher latitude regions where native species die back due to warming.⁹ This carbon-boost to invasive algae may be coupled with temperature-driven range extensions of warm water herbivorous fish that can remove temperate macroalgae, facilitating the spread of warm water invasive species, such as *N. harveyi*.²⁰

Surveys of Mediterranean CO_2 seeps have repeatedly shown that coralline algae become less common as CO_3^{2-} levels fall, whereas brown seaweeds and invasive *Asparagopsis taxiformis* (Figure 1) and *Caulerpa* spp. proliferate as CO_2 and HCO_3^- levels rise.^{21,22} A strength of using these natural analogs for the effects of ocean acidification is that they reveal the long-term response of marine communities in areas where CO_2 levels have been elevated for 100s of years. Shorter term mesocosm experiments (<1 year) allow tighter control of CO_2 doses and have shown that *Caulerpa taxifolia*

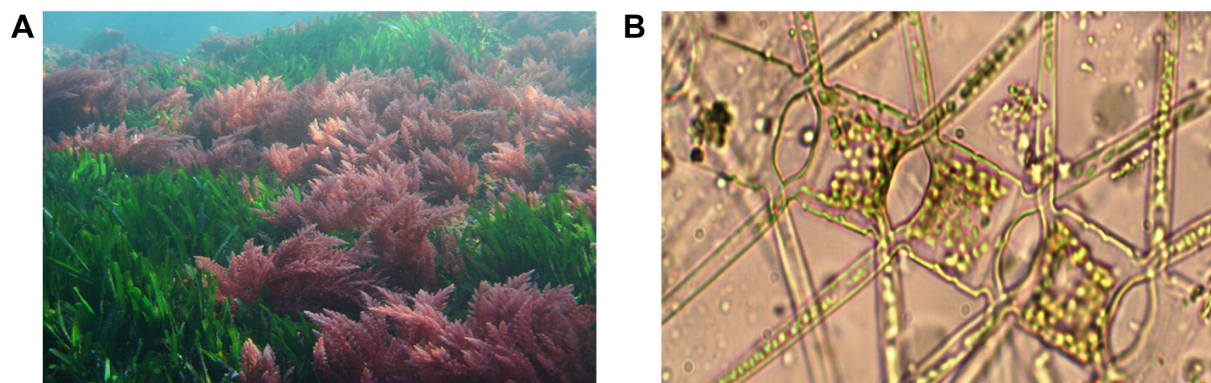


Figure 1 Invasive *Asparagopsis taxiformis* thrive in endemic *Posidonia oceanica* seagrass beds at CO_2 seeps in the Mediterranean (**A**). Fish farmers are facing increased losses due to blooms of spiky phytoplankton, such as this *Chaetoceros* sp., which are resilient to rising CO_2 levels but damage gills and can kill fish (**B**).

Note: Image **B** courtesy of Gemma Brice at The Sir Alister Hardy Foundation for Ocean Science.

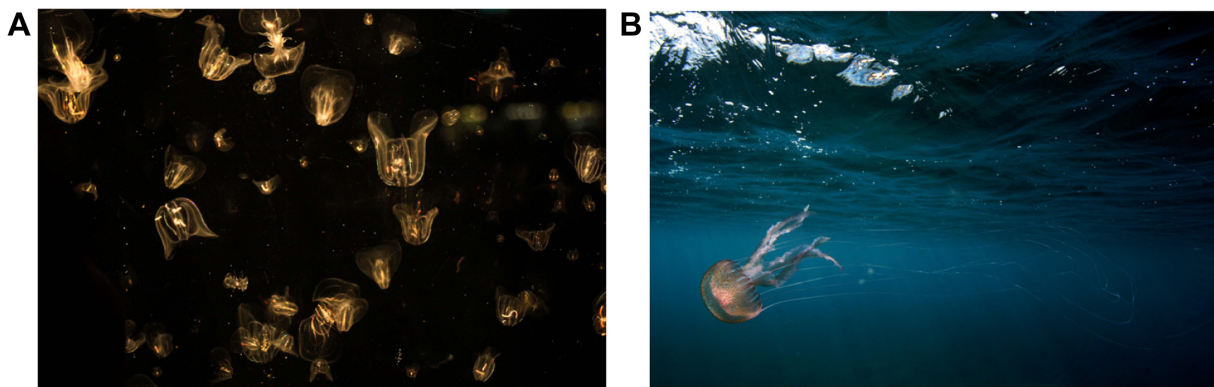


Figure 2 Invasive *Mnemiopsis* contributed to the collapse of Black Sea and Caspian Sea pelagic fisheries (A). Native *Pelagia noctiluca* at CO₂ seeps off Vulcano; jellyfish and anemones thrive where the water is too corrosive for hard corals (B).

Note: Image A courtesy of Renee Blunden.

are resilient to simulated acidification. This is a concern as *C. taxifolia* has spread rapidly causing significant alterations to native algal communities worldwide.²³ Mesocosm work on the ocean acidification response of invasive canopy-forming algae such as *Sargassum muticum* and *Undaria*

pinnatifida (Table 1) also raises concerns since they may benefit from increased CO₂ levels thereby decreasing native algal species' richness and altering communities.²⁴ *S. muticum* settlement increases when algal diversity is low, suggesting that less diverse communities will be more vulnerable to

Table 1 Algal responses to ocean acidification

Species	Condition	Parameter	Effect
<i>Undaria pinnatifida</i> ⁴⁵	pH 5.9–6.5	Photosynthetic cost	↓
<i>Sargassum muticum</i> ²¹	1,000 ppm CO ₂	High temp survival (3 d)	↓
	1,000 ppm CO ₂	Low temp survival (3 d)	↑
	1,000 ppm CO ₂	High temp survival (10 d)	↑
	1,000 ppm CO ₂	Low temp survival (10 d)	=
	1,000 ppm CO ₂	Recruitment	↓
	1,000 ppm CO ₂	Percentage cover	↓
<i>Neosiphonia harveyi</i> ⁴⁵	pH 7.6	Low temp photosynthetic efficiency	↑
	pH 7.6	Net photosynthesis	↑
	pH 7.6	Growth	↑
<i>Ulva prolifera</i> ³⁰	1,000 μatm CO ₂	Growth	↑
	1,000 μatm CO ₂	Net photosynthetic rate	=
<i>Pseudo-nitzschia fraudulenta</i> ³⁴	pH 7.9 + Si(OH) ₄ limited	Cellular toxicity	↑
<i>Pseudo-nitzschia multiseriata</i> ³²	pH 7.9 + P-replete	Cellular toxicity	↑
	pH 7.9 + P-limited	Cellular toxicity	↑
	pH 7.9 + P-replete	Growth	↑
	pH 7.9 + P-limited	Growth	↑
<i>Karenia brevis</i> ³⁵	1,000 ppm CO ₂	Growth	↑
	1,000 ppm CO ₂	Cellular toxicity	=
	1,000 ppm CO ₂	Total toxin production	↑
<i>Phaeocystis globosa</i> ³⁹	pH 7.9	Colony formation	↑
	pH 7.9	Maximum colony growth rate	↑
<i>Alexandrium fundyense</i> ⁴¹	pH 7.5–7.8	Growth	↑
	pH 7.5–7.8	Cellular toxicity	=
	pH 7.6–7.7	Density	↑
<i>Alexandrium tamarense</i> ⁴⁷	800 μatm CO ₂	Cellular toxicity	=
	1,200 μatm CO ₂	Growth	=
<i>Dolichospermum</i> spp. ⁴⁸	pH 7.5	Growth	=
	pH 7.5	Cellular toxicity	=

Notes: ↑ indicates increase, ↓ indicates decrease, = indicates no significant difference. Refer to individual studies for full details, such as duration of experiments, as these can affect the results.

Abbreviations: temp, temperature; d, days.

species' invasions.²⁵ Field sites with the elevated CO₂ levels predicted this century show approximately 5% reduction in algal community diversity accompanied by wholesale shifts in community structure due to losses of calcified algal cover, with invasive algae look set to fill niches left by intolerant native species.^{21,26} Mesocosm work shows that the physiological performance of macroalgal assemblages invaded by *S. muticum* under near-future conditions may be superior to non-invaded assemblages, potentially accelerating the proliferation of the invasive species.²⁷

Ulva spp. have become notorious in recent years as they have started to regularly form green tides that rot and kill marine life, reducing the amenity value of beaches.²⁸ In the Yellow Sea, for example, blooms of *Ulva prolifera* are causing large-scale disruption;²⁹ experiments show that ocean acidification is likely to increase *U. prolifera* growth, with rising atmospheric CO₂ levels expected to increase the intensity of green tide events.³⁰

Harmful algal blooms cause significant problems through mechanical damage (such as to fish gills), toxic effects, and competition for resources. Increased availability of dissolved inorganic carbon risks increasing the toxicity of harmful algal blooms.³¹ Tests show that the *Pseudo-nitzschia* diatoms produce more of the toxins that cause amnesic shellfish poisoning with increases in pCO₂ in nutrient limited conditions.^{32–34} Similarly, *Karenia brevis*, which causes neurotoxic shellfish poisoning, grew significantly faster and maintained the same toxin production per cell in laboratory simulations of ocean acidification.³⁵ As increased growth rates increase the likelihood of blooms becoming nutrient limited, ocean acidification is expected to increase *K. brevis* bloom toxicity and the severity of its mechanical effects.³⁶

Simulated acidification benefits *Alexandrium minutum* which can form harmful blooms,³⁷ and genetic adaptation accentuates their positive responses to reduced pH.³⁸ In the harmful algal bloom forming alga *Phaeocystis globosa*, elevated CO₂ stimulates colony formation and increases maximal colonial growth rates although this may render them more susceptible to viral infection.^{39,40} Despite widespread inter- and intra-specific variability in responses (Table 1),⁴¹ trends of increased growth, toxicity, and synergistic effects are likely to increase the severity of future harmful algal bloom events. Furthermore, temperature stratification induced nutrient scarcity and elevated CO₂ may interact to increase the likelihood of blooms becoming nutrient limited, subsequently leading to increased toxin production.³⁶ This has implications for aquaculture and fisheries; the synergistic effects of simulated harmful algal bloom exposure and

elevated CO₂ resulted in increased mortality and decreased development and growth in the scallop *Argopecten irradians*, versus exposure to these stressors independently.³⁷ The relationship between harmful algal blooms and climate change remains a research priority.^{42,43} Overall, ocean acidification is expected to profoundly alter benthic and pelagic algal communities,^{21,44} and is expected to benefit invasive species, increasing their range, diversity, and abundance.^{9,45–48}

Jellyfish

'Jellyfish' refers to gelatinous zooplankton, including scyphozoans, cubozoans, and ctenophores. Many scientists are convinced that they are on the increase due to marine ecosystem degradation, for example due to eutrophication and overfishing.⁴⁹ Jellyfish stings can be painful and even fatal to humans, impacting tourism and fish farm industries.^{50,51} Blooms of the invasive ctenophore *Mnemiopsis* coincided with the collapse of Black Sea and Caspian Sea pelagic fisheries,^{52–54} and may play a role in suppressing the population recovery of fish planktivores.⁵² Although anemones and soft corals are thought to be resilient to ocean acidification, to date little research effort has been committed to investigating the responses of jellyfish,^{55–57} which is surprising considering their economic impact.

Aurelia labiata is highly resilient to acidification in culture conditions, although the acidification slows statolith development.⁵⁸ A similar study also found smaller statoliths and retarded asexual polyp reproduction at pH 7.6 in *Alatina nr mordens*.⁵⁹ As statoliths are not exposed to seawater, it is likely that reduced statolith size results from the stress of living in high CO₂ waters which alters energy budgets in many marine taxa.^{3,60} Attrill et al linked ocean acidification to increased jellyfish nematocyst abundance in the North Sea in plankton surveys, suggesting negative impacts on calcareous plankton as the indirect cause of the increase.⁶¹ A follow-up study analyzed coelenterate tissue occurrence instead of nematocyst presence and did not find a significant relationship between pH and jellyfish abundance.⁶² The contribution of ocean acidification to jellyfish blooms is clearly a matter of debate,⁶³ yet as a group they seem resilient to the levels of acidification expected this century (Table 2). Our own observations show jellyfish can survive well in high abundance at CO₂ seeps in the Mediterranean (Figure 2).

Invasive molluscs

Laboratory studies show that calcifying marine molluscs are predominantly negatively affected by ocean acidification, with adverse effects spanning calcification, growth,

Table 2 Jellyfish responses to ocean acidification parameters

Taxa	Stage	Condition	Parameter	Effect
Jellyfish spp. ⁶¹		Reduced pH	Abundance	↑
Jellyfish spp. ⁶²		Reduced pH	Abundance	=
<i>Aurelia labiata</i> ⁵⁸	Polyp/ephyra	pH 7.5/7.2	Polyp survival	=
		pH 7.5/7.2	Ephyra/polyp ⁻¹	=
		pH 7.5/7.2	Statolith/statocyst ⁻¹	=
		pH 7.5/7.2	Statolith size	↓
<i>Alatina nr mordens</i> ⁵⁹	Polyp/ephyra	pH 7.6	Polyp survival	=
		pH 7.6	Statolith width	↓

Notes: ↑ indicates increase, ↓ indicates decrease, = indicates no significant difference.

respiration, and survival (Table 3).^{5,64,65} Field observations in the Mediterranean show that mollusc recruitment and shell thickness are significantly reduced across a range of taxa under acidified conditions.^{12,66–68} In 2006, the oyster farming industry in the Northeast Pacific struggled to cope with the adverse effects of CO₂-rich upwelling waters and now have to manipulate the carbonate chemistry of their hatcheries to help the spat survive.¹⁶ So what evidence is there for the effects of ocean acidification on highly invasive marine molluscs?

The American slipper limpet, *Crepidula fornicata*, is now widespread in Europe and is considered one of the 100 worst invasive species.⁶⁹ In the Atlantic it can reduce growth and survival in *Mytilus edulis*.⁷⁰ Ocean acidification may benefit adult *C. fornicata* since calcification increased at 606 ppm and 903 ppm CO₂, with negative responses only observed at 2,856 ppm.⁷¹ However, larval shell growth was significantly reduced at 750 ppm CO₂.⁷² As delayed larval development increases vulnerability to predation this may reduce recruitment. So it is hard to predict how ocean acidification

Table 3 Responses of invasive molluscs to ocean acidification

Species	Stage	Condition	Parameter	Effect
<i>Urosalpinx cinerea</i> ⁷¹	Adult	606/903 ppm	Calcification	↓
<i>Crepidula fornicata</i> ⁷²	Larval	750 ppm	Shell size	↓
		1,400 ppm	Normal development	↓
	Adult ⁷¹	606/903 ppm	Calcification	↑
	Adult ⁸⁶	1,000 μatm	Thermal tolerance	=
<i>Crassostrea gigas</i> ⁷⁵	Fertilization	pH 7.8	Sperm motility	=
		pH 7.8	Sperm velocity	=
		pH 7.8	Fertilization	=
	Fertilization ⁷⁶	pH 7.8	Fertilization	=
	Larval	pH 7.8	Survival	↓
		pH 7.8	Normal development	↓
		pH 7.8	Shell length	↓
		pH 7.8	Shell height	↓
	Larval ⁸⁷	pH 7.75/7.65	Survival	=
		pH 7.65	Full shell development	↓
		pH 7.65	Size	↓
	Larval ⁷⁷	Ωaragonite 2.2–0.8	Early growth	=
		Ωaragonite 2.2–0.8	Midstage growth	↓
		Ωaragonite 2.2–0.8	Larval production (biomass)	↓
	Larval ⁸⁸	pH 7.4	Normal development	↓
		pH 7.4	Shell length	↓
		pH 7.4	Shell height	↓
		pH 7.4	Full shell development	↓
	Larval ⁷⁸	1,000 ppm	Shell height	↓
		1,000 ppm	Growth	↓
		1,000 ppm	Shell strength	↑
<i>Mya arenaria</i> ⁷¹	Adult	606/903 ppm	Calcification	↓

Notes: ↑ indicates increase, ↓ indicates decrease, = indicates no significant difference.

will affect the spread of *C. fornicata*, it is a very robust organism as an adult yet the costs of coping with hypercapnia at the larval stage may impair recruitment.

The invasive NE Pacific oyster *Crassostrea gigas* has been introduced for aquaculture worldwide and has subsequently spread, becoming a threat to native bivalves such as the Sydney Rock oyster *Saccostrea glomerata* in Southern Australia.^{73,74} The fertilization of an invasive strain of *C. gigas* was not affected at pH 7.8,^{75,76} but larval mortality increased dramatically in acidified treatments with larval developmental abnormalities increasing from <20% in normal conditions to 54% at pH 7.8 and significantly reduced larval shell growth after 6 days.⁷⁶ Natural reductions in carbonate saturation correlate with decreases in larval production, suggesting that ocean acidification may reduce *C. gigas* recruitment.⁷⁷ In aquaria, juvenile and adult growth rates of the invasive oyster also decrease.⁷⁸ However, the direct responses of *C. gigas* to ocean acidification vary as resilient genotypes are present in current populations which may facilitate adaptation to future ocean acidification.⁷⁸ *S. glomerata* fertilization and early life history are more severely impacted than in *C. gigas* so the impact of invasive species on native oysters may increase due to ocean acidification.⁷⁹

An invasive predatory snail from the Northwest Atlantic (*Urosalpinx cinerea*) is spreading in the Northeast Atlantic and the Northeast Pacific where it is impacting oyster and scallop aquaculture.^{80,81} Ries et al found a linear reduction in calcification in *U. cinerea* in response to rising $p\text{CO}_2$ with significantly reduced adult growth at 606 ppm.⁷¹ Yet although it appears to respond negatively to ocean acidification in aquaria, its harmful effects in the wild may increase. Sanford et al found that ocean acidification caused a 29%–40% reduction in growth of the native oyster *Ostrea lurida* and that *U. cinerea* ate significantly more oysters in acidified treatments.⁸² This effect may be the result of reduced energetic value in prey species, increased energetic requirement in the predator, reduced prey handling time, or any combination of these points.⁸³

The role of invasive predatory gastropods may increase in response to ocean acidification if recruitment rates are maintained as per capita consumption rates can increase.^{78,82,83} This may enhance disruption to bivalve fisheries and the destruction of native biogenic habitats by invasive snails.⁸⁴ Indeed, bivalve aquaculture may increase in importance as global fish landings are expected to decrease significantly in response to climate stressors.⁸⁵ Literature is lacking regarding the effect of ocean acidification in predatory gastropod recruitment, and this gap should be filled.⁶⁵

Invasive crustaceans

Laboratory experiments indicate that although crustaceans may be one of the most resilient animal taxa to ocean acidification, ~30% of species studied to date are negatively impacted,^{5,13} which helps explain reduced crustacean diversity in acidified conditions at CO_2 seeps.^{10,66,89} The resilience of certain crustaceans to near-future ocean acidification has been attributed to their high capacity for extracellular pH regulation.^{13,90}

The barnacle *Amphibalanus improvisus* is native to the Atlantic Ocean, but has spread through fouling of artificial structures,⁹¹ vessels,⁹² and larval transport in ballast water, leading to a global distribution. It competes with native organisms for space, and may alter habitats since it promotes macroalgal colonization and creates refugia in empty shells.^{93,94} Furthermore, the species can foul native or co-invasive bivalves, altering predator-prey interactions.⁹⁵ This barnacle is particularly resilient to the effects of ocean acidification, with no significant effects observed on larval growth and development, or juvenile growth and shell strength, even at pH conditions far below 2100 projections.^{96–98} Furthermore, intra-specific variability in response exists, suggesting populations are genotypically diverse, which may increase adaptive capacity in response to ocean acidification.⁹⁷ The studies demonstrate the exceptional capacity of *A. improvisus* to persist under near-future acidified conditions. Contrastingly, *Semibalanus balanoides* show retarded embryonic development and reduced adult survival at pH 7.7.⁹⁹ Thus, in certain situations, invasive barnacles may gain a competitive advantage over native barnacles due to ocean acidification.

The crab *Carcinus maenas* is native to the Northeast Atlantic but has established populations in Australia, Southern Africa, and North America where it has disrupted native communities and impacted mollusc fisheries.^{100–103} These crabs cope well with elevated CO_2 by regulating extracellular pH, although the associated energetic costs,^{90,104,105} may have knock-on effects.¹⁰⁶ Chemoreception may be impaired and limit predation in decapods as a result of ocean acidification,¹⁰⁷ and mollusc prey may be less well defended due to ocean acidification.^{71,108,109} Despite this, no response in prey handling time or per capita consumption rate has been observed in *C. maenas* in response to ocean acidification,^{105,106} so we expect the impact of this invasive crab will increase as they are remarkably resilient.

The Red King Crab, *Paralithodes camtschaticus*, has invaded the Barents Sea, where it has disrupted native benthic communities.^{110–112} It is not as resilient as *C. maenas* to ocean acidification since larval survival and growth are reduced

at pH 7.7 and juvenile survival and growth are dramatically reduced at pH 7.8.^{113,114} Thus, ocean acidification may have severe effects on *P. camtschaticus* populations, which would alleviate its effects in its invasive range but could also negatively impact crab fisheries in its native range, although the role of adaptation remains to be considered.¹¹⁴

Despite crustaceans being one of the most resilient taxonomic groups to near-future ocean acidification, there is such a high level of inter-specific variance in responses that the effects of ocean acidification on invasive crustaceans should be considered on a case-by-case basis (Table 4).

Echinoderms

Sea urchins appear to be especially vulnerable to ocean acidification, as demonstrated in laboratory and field studies.^{115–117} *Centrostephanus rodgersii* (Figure 3) recently spread to Tasmania due to a temperature-driven range extension. It is a prolific algal grazer, creating and maintaining coralline algal dominated ‘barrens’ with reduced biodiversity such that it now threatens commercially impor-

tant abalone.^{118,119} Although acidification impedes embryo development, temperature appears to have a stronger effect on the early life history of *C. rodgersii* so the benefits of rising ocean temperature may outweigh the negative effects of acidification,¹²⁰ as shown in other sea urchins.¹²¹ Thus, the impact of *C. rodgersii* in Tasmania is likely to be maintained, despite ocean acidification, since genotypes resilient to both acidification and warming are present in *C. rodgersii* populations of Southeast Australia.¹²² Sticking with Tasmania for a moment, the invasive cushion star *Patiriella regularis* may recede from this island as the oceans acidify, since its growth and survival are impaired in mesocosm experiments with elevated CO₂ (Table 5).

Crown-of-thorns starfish, *Acanthaster planci*, eat coral and their outbreaks can cause >50% coral mortality at affected sites;¹²³ they also increase coral vulnerability to disease (Katz et al).¹²⁴ Uthicke et al found that elevated CO₂ reduced *A. planci* sperm motility and estimated that fertilization success reduced by 29% at pH 7.8 and by 75% at pH 7.6.¹²⁵ The rates of larval development and growth are

Table 4 Responses of invasive crustaceans to ocean acidification

Species	Stage	Condition	Parameter	Effect
<i>Carcinus maenas</i> ¹⁰⁶	Adult	pH 7.7	Claw strength	=
		pH 7.7	Prey choice	=
		pH 7.7	Prey handling time	=
	Adult ¹⁰⁵	pH 7.84	Feeding rate	=
		pH 7.84	Hemolymph pH	=
<i>Amphibalanus improvisus</i> ⁹⁶	Larval	pH 7.7–7.8/7.3–7.4	Survival (nauplii)	=
		pH 7.7–7.8/7.3–7.4	Survival (cyprid)	↑
		pH 7.7–7.8/7.3–7.4	Metamorphosis	=
		pH 7.7–7.8/7.3–7.4	Development rate	=
		pH 7.7–7.8/7.3–7.4	Settlement	=
	Larval ⁹⁷	pH 7.8/7.6	Survival	=
		pH 7.8/7.6	Development rate	=
	Juvenile ^{*,98}	pH 7.4	Basal diameter	=
		pH 7.4	Dry weight	=
		pH 7.4	Break resistance	↓
		pH 7.4	Shear force resistance	=
	Juvenile ^{**,98}	1,930 μatm	Basal diameter	↓
		1,930 μatm	Dry weight	↓
		1,930 μatm/2,870 μatm	Break resistance	=
		1,930 μatm	Shear force resistance	↓
<i>Paralithodes camtschaticus</i>	Adult ¹¹³	pH 7.7	Survival	↓
	Larval	pH 7.7	Survival	↓
		pH 7.7	Hatch duration	↑
		pH 7.7	Size	↑
	Juvenile ¹¹⁴	pH 7.8	Survival	↓
		pH 7.8	Growth	↓
		pH 7.8	Calcification	=

Notes: ↑ indicates increase, ↓ indicates decrease, = indicates no significant difference. *indicates the a study with 8 week batch culture. **indicates a 12 week water flow through.

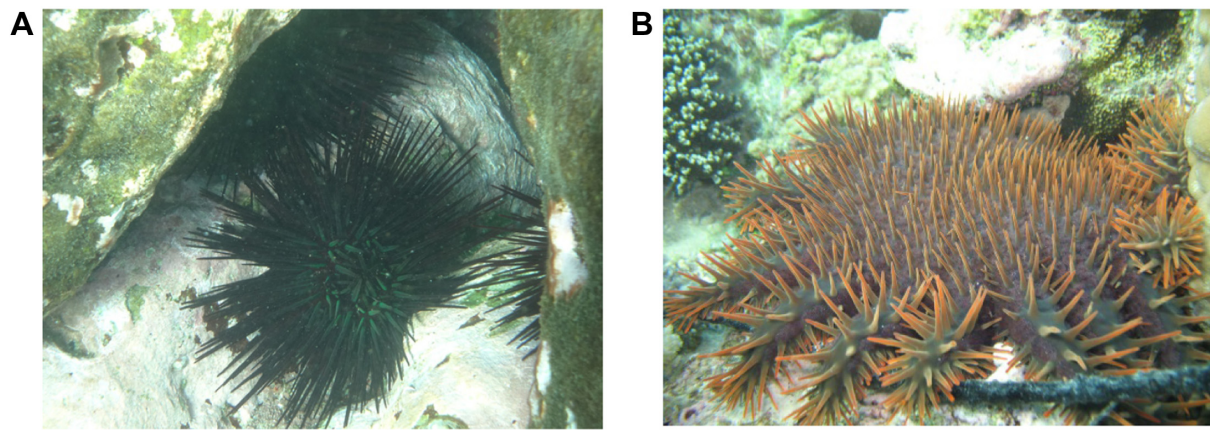


Figure 3 The spread of *Centrostephanus rodgersii* sea urchins due to sea surface warming has created 'Barrens' in Tasmania (A).¹¹⁹ *Acanthaster planci* starfish seem resilient to rising CO₂ levels but their outbreaks result in mass coral mortality on the Australian Great Barrier Reef (B).¹²³

Notes: Image A courtesy of Natalie Soars. Image B courtesy of Sven Uthicke.

also reduced under near-future acidified conditions.^{125,126} Retarded development led to an extended duration in the plankton, where larvae were vulnerable to predation, likely reducing recruitment.¹²⁵ Compounding the effect of ocean acidification on *A. planci* early life history stages, near-future acidified conditions affect crustose coralline algae and biofilms, reducing the successful settlement of *A. planci* on these substrata by an average of 36%.¹²⁵ Based on the effects

of fertilization and settlement alone, *A. planci* recruitment is projected to reduce by approximately 50% under near-future acidified conditions.¹²⁵

Thus, ocean acidification may reduce the impact of echinoderm outbreaks (Table 5); however, responses must be considered in conjunction with other factors such as food availability and temperature, which may be more influential than *p*CO₂ levels in seawater in determining the response

Table 5 Examples of responses of echinoderms to ocean acidification

Species	Stage	Condition	Parameter	Effect
<i>Acanthaster planci</i> ¹²⁵	Fertilization	pH 7.9	Sperm motility	↓
		pH 7.9	Sperm velocity	↓
		pH 7.9	Fertilization	↓
	Larval	pH 7.6	Normal development	↓
		pH 7.8	Development rate	↓
		pH 7.9	Overall recruitment	↓
	Fertilization ¹²⁶	pH 7.8/7.6	Fertilization (direct contact)	=
	Larval	pH 7.8/7.6	Growth	↓
		pH 7.8/7.6	Normal development	↓
<i>Patiriella regularis</i> ¹³³		Fertilization	pH 7.8/7.6	Fertilization (direct contact)
	Larval	pH 7.8/7.6	Normal development	↓
		pH 7.6	Survival	↓
pH 7.8		Size	↓	
<i>Asterias rubens</i> ¹³⁰	Juvenile	pH 7.64	Consumption	↓
		pH 7.64	Growth	↓
<i>Centrostephanus rodgersii</i> ¹³⁴	Fertilization	pH 7.6	Fertilization	=
	Fertilization ¹²⁰	pH 7.6	Fertilization	↓
	Larval	pH 7.6	Cleavage	↓
		pH 7.6	Hatching	↓
		pH 7.6	Gastrulation	↓
		pH 7.6	Normal development	↓
	Larval ¹³⁵	pH 7.8	Normal development	↓
		pH 7.6	Growth	↓
	Larval ¹²²	pH 7.8/7.6	Cleavage	↓
		pH 7.8/7.6	Gastrulation	=

Notes: ↑ indicates increase, ↓ indicates decrease, = indicates no significant difference.

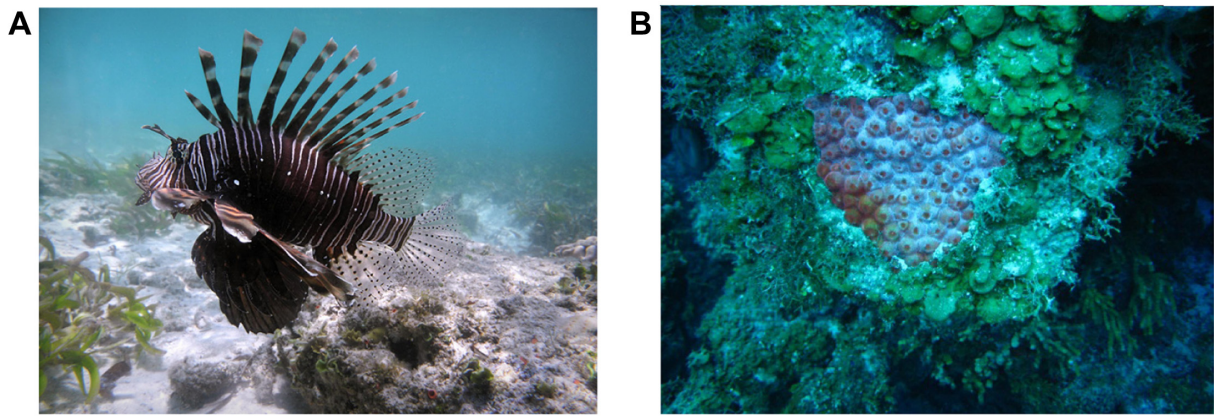


Figure 4 The invasive lionfish *Pterois volitans* eats native fish in the Caribbean (A). Caribbean reefs are shifting toward algal dominance, partially through the suppression of herbivorous fish (B).

Notes: Figure A courtesy of Renee Blundon. Figure B courtesy of Michel Lesser.

of *A. planci* outbreaks in future.^{127,128} There is clearly room for further investigation – for example, the starfish *Asterias rubens* is a significant pest to Irish bivalve fisheries,¹²⁹ and responds to ocean acidification with reduced consumption, growth,¹³⁰ and increased vulnerability to pathogens.¹³¹ But, little work has been conducted on the congeneric North Pacific seastar, *Asterias amurensis*, despite the fact that it is considered to be one of the most disruptive invasive species in the world.¹³²

Ascidians

Invasive ascidians are having significant impacts worldwide, outcompeting native species, smothering benthic habitats, and biofouling maritime infrastructure such as vessels, marinas, and aquaculture facilities.^{136–138} Few studies have investigated the impact of ocean acidification on ascidians. *Ciona intestinalis* and *Asciidiella aspersa* appear to benefit from increased larval development rates and survival under near-future acidified conditions,¹³⁹ which could enhance their recruitment. Field data from CO₂ seep studies describe variable responses. Fabricius et al found that ascidian abundance decreased at elevated CO₂ conditions in Papua New Guinea.¹⁰ At comparable CO₂ seeps in Italy, Donnarumma et al found that ascidians dominated faunal assemblages at extremely low pH sites (6.57) on seagrass beds.¹⁴⁰ Peck et al investigated biofouling communities and found ascidian abundance dramatically increased in response to a 100-day exposure to pH 7.7.¹⁴¹ Thus, certain ascidians can be expected to benefit from ocean acidification,¹³⁹ although competitive interactions will determine their site-specific success. As with other invasive groups of organisms, there is significant scope for further investigation of ascidian responses to ocean acidification, due to their environmental impacts and threats to aquaculture.

Fish

Fish have high metabolic rates and a well-developed capacity for extracellular pH regulation.⁵ Their early life stages are often resilient to elevated CO₂ and adult fish survive well in tests.^{13,142} However, ocean acidification has significant behavioral and sensory impacts attributed to impacts on the nervous system of several species of fish.^{143,144} Dixon et al (2010) found that settlement-stage larvae could not discriminate between predator and non-predator chemical cues at pH 7.8,¹⁴⁵ and studies at CO₂ seeps demonstrate altered predator cue responses in juvenile fish,¹⁴⁶ increasing vulnerability to predation. Visual and auditory predator cue responses can also be compromised by near-future ocean acidification.^{144,147,148}

Although no work on ocean acidification has been carried out on invasive fish, we can consider what current knowledge might mean for *Pterois volitans*, a lionfish native to the Indo-Pacific that has invaded the Atlantic coast of North America.¹⁴⁹ *P. volitans* has had profound impacts on food webs and on prey fish populations in the Caribbean.^{150,151} Lesser and Slattery consider the invasive lionfish has played a key role in shifting benthic communities from coral to algal dominance by reducing herbivorous fish populations (Figure 4).¹⁵² On balance, negative effects on tropical coral reef prey species are expected to outweigh effects on predatory species.¹⁵³

We fear that predation pressure from *P. volitans* could maintain low populations of herbivorous fish.^{151,154} This could combine with the adverse effects of ocean acidification on grazing sea urchins and the benefits of elevated CO₂ on fleshy seaweeds and contribute to an ongoing decline in coral reefs due to algal overgrowth, especially in areas affected by eutrophication.¹⁵⁵ Studies of the effects of ocean acidification on

P. volitans and its ecological interactions would be worthwhile considering the rapid spread of this species.

Conclusion

There is plenty of evidence that ocean acidification can be expected to exacerbate the problems associated with ‘nuisance’ species thereby degrading ecosystem services. The traits that help many invasive organisms succeed, such as wider physiological tolerance and a reproductive advantage in the face of multiple stressors,¹⁵⁶ are traits that look set to help them in an acidifying ocean.

We expect that the impacts of harmful bloom-forming algae and invasive seaweeds will increase as oceans acidify, although responses in other groups are less predictable. Inter-specific variance in responses to near-future ocean acidification is prevalent, with even closely related species showing very different responses.^{115,157} This highlights the importance of species-specific investigations, as extrapolations from similar organisms could be inaccurate. It will be important to consider the limitations in applying organism responses from laboratory experiments to predictive modeling of natural habitats, as laboratory responses will not necessarily translate to the wild. The effect of ocean acidification on nuisance species must be considered in the context of their community, as their impact will largely depend on the relative responses of surrounding organisms.^{15,158}

Invasive species are, by nature, adaptable and this will play an important role in determining their success as the chemistry of the oceans continues to change.¹⁵⁹ The role of adaptation has not been explored extensively with regard to ecologically harmful marine species, however, the increasing rate of ocean acidification is narrowing the time window available for marine organisms to adapt,¹⁷ thus organisms with resilient genotypes present in current populations have an advantage.^{97,122} Some invasive species have strains that are particularly resilient to ocean acidification, for example the invasive *C. gigas* may adapt more readily to ocean acidification than its native competitor *S. glomerata* in Southern Australia.⁷⁸

Although this review focuses on ocean acidification, multiple drivers of global change such as warming, eutrophication, overfishing, and oxygen depletion will determine the prevalence of outbreaks of nuisance marine organisms. For example, ocean acidification can enhance the success of invasive marine organisms near their thermal limits at the same time as causing a decline in native marine organisms.^{9,120,160} Indeed, strong variability in responses to multiple climatic stressors have been identified in marine

taxa, and moving forward, these stressors should be considered synergistically wherever possible.¹⁶¹ In carrying out this review we found a few instances where invasive or harmful marine organisms might be negatively affected by ocean acidification, but far more instances in which ocean acidification can be reasonably expected to make matters worse. This highlights the necessity of regional studies of the responses of harmful marine taxa (e.g. *C. taxifolia*, *A. amurensis*, invasive ascidians, *P. volitans*) to rising CO₂ levels. This review also reinforces the overall imperative to reduce CO₂ emissions, since they may be opening the door to the spread of harmful marine organisms.

Acknowledgment

This review contributes to the EU FP7 project ‘Mediterranean Sea Acidification under a changing climate’ (grant agreement no. 265103) and to the UK Ocean Acidification research programme, co-funded by NERC, Defra and DECC (Grant: NE/H016996/1 “Ocean acidification impacts on sea-surface biogeochemistry and climate”).

Disclosure

There are no conflicts of interest to disclose in this work.

References

1. Hoegh-Guldberg OR, Cai R, Poloczanska ES, et al. The Ocean. In: Turley C, Omar L, editors. *Climate Change 2014: Impacts, Adaptation, and Vulnerability. Part B: Regional Aspects. Contribution of Working Group II to the Fifth Assessment Report of the Intergovernmental Panel on Climate Change*. Cambridge, UK and New York, NY, USA: Cambridge University Press; 2014:1655–1731.
2. Feely RA, Sabine C, Lee K, et al. Impact of anthropogenic CO₂ on the CaCO₃ system in the oceans. *Science*. 2004;305(5682):362–366.
3. Barry JP, Widdicombe S, Hall-Spencer JM. Effects of ocean acidification on marine biodiversity and ecosystem function. In: Gattuso JP, Lansson L, editors. *Ocean Acidification*. Oxford: Oxford University Press; 2011:192–209.
4. Harley CDG, Anderson K, Demes K, et al. Effects of climate change on global seaweed communities. *J Phycol*. 2012;48(5):1064–1078.
5. Wittmann AC, Pörtner HO. Sensitivities of extant animal taxa to ocean acidification. *Nature Climate Change*. 2013;3(11):995–1001.
6. Garilli V, Rodolfo-Metalpa R, Scuderi D, et al. Physiological advantages of dwarfing in surviving extinctions in high-CO₂ oceans. *Nature Climate Change*. 2015;5(7):678–682.
7. Welch MJ, Watson SA, Welsh JQ, McCormick MI, Munday PL. Effects of elevated CO₂ on fish behaviour undiminished by transgenerational acclimation. *Nature Climate Change*. 2014;4(12):1086–1089.
8. Connell SD, Kroeker KJ, Fabricius KE, Kline DI, Russell BD. The other ocean acidification problem: CO₂ as a resource among competitors for ecosystem dominance. *Philos Trans R Soc Lond B Biol Sci*. 2013; 368(1627):20120442.
9. Brodie J, Williamson C, Smale D, et al. The future of the northeast Atlantic benthic flora in a high CO₂ world. *Ecol Evol*. 2014;4(13): 2787–2798.
10. Fabricius KE, De’ath G, Noonan S, Uthicke S. Ecological effects of ocean acidification and habitat complexity on reef-associated macro-invertebrate communities. *Proc Biol Sci*. 2014;281(1775):20132479.

11. Jackson EL, Davies AJ, Howell KL, Kershaw PJ, Hall-Spencer JM. Future-proofing marine protected area networks for cold water coral reefs. *ICES J Mar Sci*. 2014;71(9):2621–2629.
12. Milazzo M, Rodolfo-Metalpa R, Chan V, et al. Ocean acidification impairs vermetid reef recruitment. *Sci Rep*. 2014;4:4189.
13. Kroeker KJ, Kordas R, Crim R, et al. Impacts of ocean acidification on marine organisms: quantifying sensitivities and interaction with warming. *Glob Chang Biol*. 2013;19(6):1884–1896.
14. Fabricius KE, Langdon C, Uthicke S, et al. Losers and winners in coral reefs acclimatized to elevated carbon dioxide concentrations. *Nature Climate Change*. 2011;1(3):165–169.
15. Gaylord B, Kroeker K, Sunday J. Ocean acidification through the lens of ecological theory. *Ecology*. 2015;96(1):3–15.
16. Branch TA, DeJoseph BM, Ray LJ, Wagner CA. Impacts of ocean acidification on marine seafood. *Trends Ecol Evol*. 2013;28(3):178–186.
17. Gattuso JP, Magnan A, Billé R, et al. Contrasting futures for ocean and society from different anthropogenic CO₂ emissions scenarios. *Science*. 2015;349(6243):aac4722.
18. Cornwall CE, Revill AT, Hurd CL. High prevalence of diffusive uptake of CO₂ by macroalgae in a temperate subtidal ecosystem. *Photosynth Res*. 2015;124(2):181–190.
19. Koch M, Bowes G, Ross C, Zhang XH. Climate change and ocean acidification effects on seagrasses and marine macroalgae. *Glob Chang Biol*. 2013;19(1):103–132.
20. Vergés A, Steinberg PD, Hay ME, et al. The tropicalization of temperate marine ecosystems: climate-mediated changes in herbivory and community phase shifts. *Proc Biol Sci*. 2014;281(1789):20140846.
21. Porzio L, Buia MC, Hall-Spencer JM. Effects of ocean acidification on macroalgal communities. *Journal of Experimental Marine Biology and Ecology*. 2011;400(1–2):278–287.
22. Baggini C, Salomidi M, Voutsinas E, Bray L, Krasakopoulou E, Hall-Spencer JM. Seasonality affects macroalgal community response to increases in pCO₂. *PLoS One*. 2014;9(9):e106520.
23. Grant WM. *Molecular Phylogeography and Climate Change Biology of the Invasive Green Marine Macroalgae Caulerpa Taxifolia and Caulerpa Cylindracea in Australia* [PhD thesis]. Australia: The University of Adelaide; 2015.
24. Britton-Simmons KH. Direct and indirect effects of the introduced alga *Sargassum muticum* on benthic, subtidal communities of Washington State, USA. *Marine Ecology Progress Series*. 2004;277:61–78.
25. Vaz-Pinto F, Olabarria C, Gestoso I, et al. Functional diversity and climate change: Effects on the invasibility of macroalgal assemblages. *Biological Invasions*. 2013;15(8):1833–1846.
26. Porzio L, Garrard SL, Buia MC. The effect of ocean acidification on early algal colonization stages at natural CO₂ vents. *Marine Biology*. 2013;160(8):2247–2259.
27. Olabarria C, Arenas F, Viejo R, et al. Response of macroalgal assemblages from rockpools to climate change: Effects of persistent increase in temperature and CO₂. *Oikos*. 2013;122(7):1065–1079.
28. Scherner F, Horta PA, Oliveira EC, et al. Coastal urbanization leads to remarkable seaweed species loss and community shifts along the SW Atlantic. *Mar Pollut Bull*. 2013;76(1–2):106–115.
29. YeXiao-wen NH, Zhang XW, Mao YZ, et al. ‘Green tides’ are overwhelming the coastline of our blue planet: Taking the world’s largest example. *Ecological Research*. 2011;26(3):477–485.
30. Xu J, Gao K. Future CO₂ Induced ocean acidification mediates the physiological performance of a green tide alga. *Plant Physiol*. 2012;160(4):1762–1769.
31. Fu FX, Tatters AO, Hutchins DA. Global change and the future of harmful algal blooms in the ocean. *Mar Ecol Prog Ser*. 2012;470:207–233.
32. Sun J, Hutchins D, Feng Y, et al. Effects of changing pCO₂ and phosphate availability on domoic acid production and physiology of the marine harmful bloom diatom *Pseudo-nitzschia multiseries*. *Limnol Oceanogr*. 2011;56(3):829–840.
33. Lelong A, Hégaret H, Soudant P, Bates SS. *Pseudo-nitzschia* (Bacillariophyceae) species, domoic acid and amnesic shellfish poisoning: revisiting previous paradigms. *Phycologia*. 2012;51(2):168–216.
34. Tatters AO, Fu FX, Hutchins D. High CO₂ and silicate limitation synergistically increase the toxicity of *Pseudo-nitzschia fraudulenta*. *PLoS One*. 2012;7(2):e32116.
35. Errera RM, Yvon-Lewis S, Kessler JD, Campbell L. Responses of the dinoflagellate *Karenia brevis* to climate change: PCO₂ and sea surface temperatures. *Harmful Algae*. 2014;37:110–116.
36. Harder DR, Sunda WG, Tester P, Shea D, Litaker RW. Increased cellular brevetoxins in the red tide dinoflagellate *Karenia brevis* under CO₂ limitation of growth rate: Evolutionary implications and potential effects on bloom toxicity. *Limnol Oceanogr*. 2014;59(2):560–577.
37. Hwang DF, Lu YH. Influence of environmental and nutritional factors on growth, toxicity, and toxin profile of dinoflagellate *Alexandrium minutum*. *Toxicon*. 2000;38(11):1491–1503.
38. Flores-Moya A, Rouco M, García-Sánchez M, et al. Effects of adaptation, chance, and history on the evolution of the toxic dinoflagellate *Alexandrium minutum* under selection of increased temperature and acidification. *Ecol Evol*. 2012;2(6):1251–1259.
39. Wang Y, Smith WO, Wang X, Li S. Subtle biological responses to increased CO₂ concentrations by *Phaeocystis globosa* Scherffel, a harmful algal bloom species. *Geophys Res Lett*. 2010;37(9):1–5.
40. Chen S, Gao K, Beardall J. Viral attack exacerbates the susceptibility of a bloom-forming alga to ocean acidification. *Glob Chang Biol*. 2014;21(2):629–636.
41. Hattenrath-Lehmann TK, Smith J, Wallace R, et al. The effects of elevated CO₂ on the growth and toxicity of field populations and cultures of the saxitoxin – producing dinoflagellate, *Alexandrium fundyense*. *Limnol Oceanogr*. 2014;60(1):198–214.
42. Talmage SC, Gobler CJ. Effects of CO₂ and the harmful alga *Aureococcus anophagefferens* on growth and survival of oyster and scallop larvae. *Mar Ecol Prog Ser*. 2012;464:121–134.
43. Fleming L, McDonough N, Austen M, et al. Oceans and human health: a rising tide of challenges and opportunities for Europe. *Mar Env Res*. 2014;99:16–19.
44. Hall-Spencer JM, Rodolfo Metalpa R, Martin S, et al. Volcanic carbon dioxide vents show ecosystem effects of ocean acidification. *Nature*. 2008;454:96–99.
45. Olischläger M, Wiencke C. Ocean acidification alleviates low-temperature effects on growth and photosynthesis of the red alga *Neosiphonia harveyi* (Rhodophyta). *J Exp Bot*. 2013;64(18):5587–5597.
46. Carvalho M, Hayashizaki K, Ogawa, H. Effect of pH on the carbon stable isotope fractionation in photosynthesis by the kelp *Undaria pinnatifida*. *Coastal Marine Science*. 2010;34(1):135–139.
47. Van de Waal DB, Eberlein T, John U, Wohlrab S, Rost B. Impact of elevated pCO₂ on paralytic shellfish poisoning toxin content and composition in *Alexandrium tamarense*. *Toxicon*. 2014;78:58–67.
48. Brutemark A, Engström-Öst J, Vehmaa A, Gorokhova E. Growth, toxicity and oxidative stress of a cultured cyanobacterium (*Dolichospermum* sp.) under different CO₂/pH and temperature conditions. *Phycol Res*. 2015;63:56–63.
49. Brotz L, Cheung WWL, Kleisner K, Pakhomov E, Pauly D. Increasing jellyfish populations: trends in Large Marine Ecosystems. *Hydrobiologia*. 2012;690(1):3–20.
50. Purcell JE, Yye SI, Lo WT. Anthropogenic causes of jellyfish blooms and their direct consequences for humans: A review. *Mar Ecol Prog Ser*. 2007;350:153–174.
51. Richardson AJ, Bakun A, Hays GC, Gibbons MJ. The jellyfish joyride: causes, consequences and management responses to a more gelatinous future. *Trends Ecol Evol*. 2009;24(6):312–322.
52. Roohi A, Kideys A, Sajjadi A, et al. Changes in biodiversity of phytoplankton, zooplankton, fishes and macrobenthos in the Southern Caspian Sea after the invasion of the ctenophore *Mnemiopsis leidyi*. *Biol Invasions*. 2010;12(7):2343–2361.
53. Condon RH, Steinberg D, del Giorgio PA, et al. Jellyfish blooms result in a major microbial respiratory sink of carbon in marine systems. *Proc Natl Acad Sci U S A*. 2011;108(25):10225–10230.

54. Daskalov G, Grishin A, Rodionov S, Mihneva V. Trophic cascades triggered by overfishing reveal possible mechanisms of ecosystem regime shifts. *Proc Natl Acad Sci U S A*. 2007;104(25):10518–10523.
55. Olariaga A, Guallart E, Fuentes V, et al. Polyp flats, a new system for experimenting with jellyfish polyps, with insights into the effects of ocean acidification. *Limnol Oceanogr Methods*. 2014;12(4):212–222.
56. Lacoue-Labarthe T, Nunes PALD, Cinar M, et al. Mediterranean and the Black Seas region. In: Hilmi N, Allemand D, Kavanagh C, Laffoley D, Metian M, Osborn D, Reynaud S, editors. Bridging the gap between ocean acidification impacts and economic valuation: regional impacts of ocean acidification on fisheries and aquaculture. IUCN 2015 DOI: 10.2305/IUCN.CH.2015.03.en.
57. Suggett DJ, Hall-Spencer JM, Rodolfo-Metalpa R, et al. Sea anemones may thrive in a high CO₂ world. *Glob Chang Biol*. 2012;18(10):3015–3025.
58. Winans AK, Purcell JE. Effects of pH on asexual reproduction and statolith formation of the scyphozoan, *Aurelia labiata*. *Hydrobiologia*. 2010;645(1):39–52.
59. Klein SG, Pitt K, Rathjen K, Seymour JE. Irukandji jellyfish polyps exhibit tolerance to interacting climate change stressors. *Glob Chang Biol*. 2014;20(1):29–37.
60. Melzner F, Stange P, Trübenbach K, et al. Food supply and seawater pCO₂ impact calcification and internal shell dissolution in the blue mussel *Mytilus edulis*. *PLoS One*. 2011;6(9):e24223.
61. Attrill MJ, Wright J, Edwards M. Climate-related increases in jellyfish frequency suggest a more gelatinous future for the North Sea. *Limnol Oceanogr*. 2007;52:480–485.
62. Richardson AJ, Gibbons MJ. Are jellyfish increasing in response to ocean acidification? *Limnol Oceanogr*. 2008;53(5):2040–2045.
63. Duarte CM, Fulweiler R, Lovelock C, et al. Reconsidering Ocean Calamities. *Bioscience*. 2014;65(2):130–139.
64. Gazeau F, Parker L, Comeau S, et al. Impacts of ocean acidification on marine shelled molluscs. *Mar Biol*. 2013;160:2207–2245.
65. Parker LM, Ross P, O'Connor W, et al. Predicting the response of molluscs to the impact of ocean acidification. *Biology*. 2013;2(2):651–692.
66. Cigliano M, Gambi MC, Rodolfo-Metalpa R, Patti FP, Hall-Spencer JM. Effects of ocean acidification on invertebrate settlement at volcanic CO₂ vents. *Mar Biol*. 2010;157(11):2489–2502.
67. Rodolfo-Metalpa R, Houlbreque F, Tambutte E, et al. Coral and mollusc resistance to ocean acidification adversely affected by warming. *Nat Clim Chang*. 2011;1(6):308–312.
68. Basso L, Hendriks IE, Rodríguez-Navarro AB, Gambi C, Duarte CM. Extreme pH Conditions at a Natural CO₂ Vent System (Italy) Affect Growth, and Survival of Juvenile Pen Shells. *Estuaries Coasts*. 2015;1.
69. Streftaris N, Zenetos A. Alien marine species in the Mediterranean – the 100 ‘worst invasives’ and their impact. *Mediterr Mar Sci*. 2006;7(1):87–118.
70. Thielges DW. Impact of an invader: Epizootic American slipper limpet *Crepidula fornicata* reduces survival and growth in European mussels. *Mar Ecol Prog Ser*. 2005;286:13–19.
71. Ries JB, Cohen AL, McCorkle DC. Marine calcifiers exhibit mixed responses to CO₂-induced ocean acidification. *Geology*. 2009;37(12):1131–1134.
72. Noisette F, Comtet T, Legrand E, et al. Does encapsulation protect embryos from the effects of ocean acidification? The example of *Crepidula fornicata*. *PLoS One*. 2014;9(3):e93021.
73. Nell J. The history of oyster farming in Australia. *Mar Fish Rev*. 2001;63(3):14–25.
74. Diederich S. Differential recruitment of introduced Pacific oysters and native mussels at the North Sea coast: coexistence possible? *J Sea Res*. 2005;53(4):269–281.
75. Havenhand JN, Schlegel P. Near-future levels of ocean acidification do not affect sperm motility and fertilization kinetics in the oyster *Crassostrea gigas*. *Biogeosciences Discuss*. 2009;6(12):3009–3015.
76. Barros P, Sobral P, Range P, Chicharo L, Matias D. Effects of sea-water acidification on fertilization and larval development of the oyster *Crassostrea gigas*. *J Exp Mar Bio Ecol*. 2013;440:200–206.
77. Barton A, Hales B, Waldbusser GG, Langdon C, Feely R. The Pacific oyster, *Crassostrea gigas*, shows negative correlation to naturally elevated carbon dioxide levels: Implications for near-term ocean acidification effects. *Limnol Oceanogr*. 2012;57(3):698–710.
78. Wright JM, Parker L, O'Connor W, et al. Populations of pacific oysters *Crassostrea gigas* respond variably to elevated CO₂ and predation by *Morula marginalba*. *Biol Bull*. 2014;226(3):269–281.
79. Parker LM, Ross PM, O'Connor WA. Comparing the effect of elevated pCO₂ and temperature on the fertilization and early development of two species of oysters. *Mar Biol*. 2010;157(11):2435–2452.
80. Ordzie CJ, Garofalo GC. Predation, attack success, and attraction to the bay scallop, *Argopecten irradians* (Lamarck) by the oyster drill, *Urosalpinx cinerea* (Say). *J Exp Mar Bio Ecol*. 1980;47(1):95–100.
81. Buhle ER, Ruesink JL. Impacts of invasive oyster drills on olympia oyster (*Ostrea lurida* Carpenter 1864) Recovery in Willapa Bay, Washington, United States. *J Shellfish Res*. 2009;28(1):87–96.
82. Sanford E, Gaylord B, Hettinger A, et al. Ocean acidification increases the vulnerability of native oysters to predation by invasive snails. *Proc Biol Sci*. 2014;281(1778):20132681.
83. Kroeker K, Sanford E, Jellison B, Gaylord B. Predicting the effects of ocean acidification on predator-prey interactions: a conceptual framework based on coastal molluscs. *Biol Bull*. 2014;226(3):211–222.
84. Kimbro DL, Grosholz E, Baukus A, et al. Invasive species cause large-scale loss of native California oyster habitat by disrupting trophic cascades. *Oecologia*. 2009;160(3):563–575.
85. iddri.org [homepage on the Internet]. Weatherdon L, Rogers A, Sumaila R, Magnan A, Cheung W. The Oceans 2015 Initiative, Part II: An updated understanding of the observed and projected impacts of ocean warming and acidification on marine and coastal socioeconomic activities/sectors. Available from: <http://www.iddri.org/Publications/The-Oceans-2015-Initiative,Part-II-An-updated-understanding-of-the-observed-and-projected-impacts-of-ocean-warming-and-acidific>. Accessed September 7, 2015.
86. Noisette F, Richard J, Le Fur I, et al. Metabolic responses to temperature stress under elevated pCO₂ in *Crepidula fornicata*. *Journal of Molluscan Studies*. 2014;81(2).
87. Timmins-Schiffman E, O'Donnell MJ, Friedman CS, Roberts SB. Elevated pCO₂ causes developmental delay in early larval Pacific oysters, *Crassostrea gigas*. *Mar Biol*. 2013;160(8):1973–1982.
88. Kurihara H, Kato S, Ishimatsu A. Effects of increased seawater pCO₂ on early development of the oyster *Crassostrea gigas*. *Aquat Biol*. 2007;1(1):91–98.
89. Garrard SL, Gambi M, Scipione M, et al. Indirect effects may buffer negative responses of seagrass invertebrate communities to ocean acidification. *J Exp Mar Bio Ecol*. 2014;461:31–38.
90. Whiteley NM. Physiological and ecological responses of crustaceans to ocean acidification. *Mar Ecol Prog Ser*. 2011;430:257–271.
91. Foster BA, Willan RC. Foreign barnacles transported to New Zealand on an oil platform. *NZ J Mar Freshw Res*. 1979;13:143–149.
92. Zvyagintsev AY. Fouling of ocean-going shipping and its role in the spread of exotic species in the seas of the Far East. *Sessile Org*. 2000;17:31–43.
93. Kotta J, Kotta I, Simm M, et al. Ecological consequences of biological invasions: Three invertebrate case studies in the north-eastern Baltic Sea. *Helgol Mar Res*. 2006;60(2):106–112.
94. Olenin S, Leppäkoski E. Non-native animals in the Baltic Sea: Alteration of benthic habitats in coastal inlets and lagoons. *Hydrobiologia*. 1999;393:233–243.
95. Laudien J, Wahl M. Indirect effects of epibiosis on host mortality: seastar predation on differently fouled mussels. *Mar Ecol*. 1999;20(1):35–47.
96. Pansch C, Nasrolahi A, Appelhans YS, Wahl M. Impacts of ocean warming and acidification on the larval development of the barnacle *Amphibalanus improvisus*. *J Exp Mar Bio Ecol*. 2012;420:48–55.

97. Pansch C, Schlegel P, Havenhand J. Larval development of the barnacle *Amphibalanus improvisus* responds variably but robustly to near-future ocean acidification. *ICES J Mar Sci.* 2013;70(4): 805–811.
98. Pansch C, Nasrolahi A, Appelhans YS, Wahl M. Tolerance of juvenile barnacles (*Amphibalanus improvisus*) to warming and elevated pCO₂. *Mar Biol.* 2013;160(8):2023–2035.
99. Findlay HS, Kendall M, Spicer JI, Widdicombe S. Future high CO₂ in the intertidal may compromise adult barnacle *Semibalanus balanoides* survival and embryonic development rate. *Mar Ecol Prog Ser.* 2009;389:193–202.
100. Grosholz ED, Ruiz GM. Predicting the impact of introduced marine species: lessons from the multiple invasions of the European Green Crab *Carcinus maenas*. *Biol Conserv.* 1996;78:59–66.
101. Thresher R, Proctor C, Ruiz G, et al. Invasion dynamics of the European shore crab, *Carcinus maenas*, in Australia. *Mar Biol.* 2003; 142(5):867–876.
102. Walton WC, MacKinnon C, Rodriguez LF, Proctor C, Ruiz GM. Effect of an invasive crab upon a marine fishery: green crab, *Carcinus maenas*, predation upon a venerid clam, *Katebysia scalarina*, in Tasmania (Australia). *J Exp Mar Bio Ecol.* 2002;272(2):171–189.
103. Murray LG, Seed R, Jones T. Predicting the impacts of *Carcinus maenas* predation on cultivated *Mytilus edulis* beds. *J Shellfish Res.* 2007;26(4):1089–1098.
104. Fehsenfeld S, Kiko R, Appelhans Y, et al. Effects of elevated seawater pCO₂ on gene expression patterns in the gills of the green crab, *Carcinus maenas*. *BMC Genomics.* 2011;12:488.
105. Appelhans YS, Thomsen J, Pansch C, Melzner F, Wahl M. Sour times: Seawater acidification effects on growth, feeding behaviour and acid-base status of *Asterias rubens* and *Carcinus maenas*. *Mar Ecol Prog Ser.* 2012;459:85–97.
106. Landes A, Zimmer M. Acidification and warming affect both a calcifying predator and prey, but not their interaction. *Mar Ecol Prog Ser.* 2012;450:1–10.
107. De la Haye KL, Spicer JI, Widdicombe S, Briffa M. Reduced pH sea water disrupts chemo-responsive behaviour in an intertidal crustacean. *J Exp Mar Bio Ecol.* 2012;412:134–140.
108. Bibby R, Cleall-Harding P, Rundle S, Widdicombe S, Spicer J. Ocean acidification disrupts induced defences in the intertidal gastropod *Littorina littorea*. *Biol Lett.* 2007;3(6):699–701.
109. Melatunan S, Calosi P, Rundle SD, Widdicombe S, Moody J. Effects of ocean acidification and elevated temperature on shell plasticity and its energetic basis in an intertidal gastropod. *Mar Ecol Prog Ser.* 2013;472:155–168.
110. Britayev T, Rzhavsky V, Pavlova LV, Dvoretiskij G. Studies on impact of the alien Red King Crab (*Paralithodes camtschaticus*) on the shallow water benthic communities of the Barents Sea. *J Appl Ichthyol.* 2010;26(Suppl 2):66–73.
111. Falk-Petersen J, Renaud P, Anisimova N. Establishment and ecosystem effects of the alien invasive red king crab (*Paralithodes camtschaticus*) in the Barents Sea – A review. *ICES J Mar Sci.* 2011;68(3): 479–488.
112. Oug E, Cochrane SKJ, Sundet JH, Norling K, Nilsson HC. Effects of the invasive red king crab (*Paralithodes camtschaticus*) on soft-bottom fauna in Varangerfjorden, northern Norway. *Mar Biodivers.* 2011;41(3):467–479.
113. Long WC, Swiney KM, Foy RJ. Effects of ocean acidification on the embryos and larvae of red king crab, *Paralithodes camtschaticus*. *Mar Pollut Bull.* 2013;69(1–2):38–47.
114. Long WC, Swiney KM, Harris C, Page HN, Foy RJ. Effects of ocean acidification on juvenile Red King Crab (*Paralithodes camtschaticus*) and Tanner Crab (*Chionoecetes bairdi*) growth, condition, calcification, and survival. *PLoS One.* 2013;8(4):e60959.
115. Byrne M, Lamare M, Winter D, Dworjanyn SA, Uthicke S. The stunting effect of a high CO₂ ocean on calcification and development in sea urchin larvae, a synthesis from the tropics to the poles. *Philos Trans R Soc Lond B Biol Sci.* 2013;368(1627):20120439.
116. Johnson VR, Russell BD, Fabricius KE, Brownlee C, Hall-Spencer JM. Temperate and tropical brown macroalgae thrive, despite decalcification, along natural CO₂ gradients. *Glob Chang Biol.* 2012;18(9): 2792–2803.
117. Calosi P, Rastrick SPS, Graziano M, et al. Distribution of sea urchins living near shallow CO₂ vents is dependent on species acid-base and ion-regulatory abilities. *Mar Pollut Bull.* 2013;73(2): 470–484.
118. Strain EM, Johnson CR. Competition between an invasive urchin and commercially fished abalone: effect on body condition, reproduction and survivorship. *Mar Ecol Prog Ser.* 2009;377:169–182.
119. Byrne M, Andrew N. *Centrostephanus rodgersii*. In: Lawrence JM, editor. *Sea Urchins: Biology and Ecology*. San Diego: Academic Press; 2013:243–254.
120. Pecorino D, Barker MF, Dworjanyn S, Byrne M, Lamare MD. Impacts of near future sea surface pH and temperature conditions on fertilisation and embryonic development in *Centrostephanus rodgersii* from northern New Zealand and northern New South Wales, Australia. *Mar Biol.* 2014;161:101–110.
121. Byrne M, Foo S, Soars N, et al. Ocean warming will mitigate the effects of acidification on calcifying sea urchin larvae (*Heliocidaris tuberculata*) from the Australian global warming hot spot. *J Exp Mar Bio Ecol.* 2013;448:250–257.
122. Foo SA, Dworjanyn SA, Poore AG, Byrne M. Adaptive capacity of the habitat modifying sea urchin *Centrostephanus rodgersii* to ocean warming and ocean acidification: Performance of early embryos. *PLoS One.* 2012;7(8):e42497.
123. Baird AH, Pratchett MS, Hoey AS, Herdiana Y, Campbell SJ. *Acanthaster planci* is a major cause of coral mortality in Indonesia. *Coral Reefs.* 2013;32(3):803–812.
124. Katz SM, Pollock FJ, Bourne DG, Willis BL. Crown-of-thorns starfish predation and physical injuries promote brown band disease on corals. *Coral Reefs.* 2014;33(3):705–716.
125. Uthicke S, Pecorino D, Albright R, et al. Impacts of ocean acidification on early life-history stages and settlement of the coral-eating sea star *Acanthaster planci*. *PLoS One.* 2013;8(12):e82938.
126. Kanya PZ, Dworjanyn SA, Hardy N, et al. Larvae of the coral eating crown-of-thorns starfish, *Acanthaster planci* in a warmer-high CO₂ ocean. *Glob Chang Biol.* 2014;20(11):3365–3376.
127. Fabricius KE, Okaji K, De'ath G. Three lines of evidence to link outbreaks of the crown-of-thorns seastar *Acanthaster planci* to the release of larval food limitation. *Coral Reefs.* 2010;29(3):593–605.
128. Uthicke S, Logan M, Liddy M, et al. Climate change as an unexpected co-factor promoting coral eating seastar (*Acanthaster planci*) outbreaks. *Sci Rep.* 2015;5:8402.
129. Calderwood J, O'Connor N, Roberts D. The effects of transportation stress and barnacle fouling on predation rates of starfish (*Asterias rubens*) on mussels (*Mytilus edulis*). *Aquaculture.* 2015;444: 108–113.
130. Appelhans Y, Thomsen J, Opitz S, et al. Juvenile sea stars exposed to acidification decrease feeding and growth with no acclimation potential. *Mar Ecol Prog Ser.* 2014;509:227–239.
131. Hernroth B, Baden S, Thorndyke M, Dupont S. Immune suppression of the echinoderm *Asterias rubens* (L.) following long-term ocean acidification. *Aquat Toxicol.* 2011;103(3–4):222–224.
132. Lowe S, Browne M, Boudjelas S, De Poorter M. 100 of the world's worst invasive alien species. *Aliens.* 2000;12:12.
133. Byrne M, Gonzalez-Bernat M, Doo S, Foo S, Soars N, Lamare M. Effects of ocean warming and acidification on embryos and non-calcifying larvae of the invasive sea star *Patiriella regularis*. *Mar Ecol Prog Ser.* 2013;473:235–246.
134. Byrne M, Soars N, Ho M, et al. Fertilization in a suite of coastal marine invertebrates from SE Australia is robust to near-future ocean warming and acidification. *Mar Biol.* 2010;157:2061–2069.
135. Doo SS, Dworjanyn S, Foo S, Soars N, Byrne M. Impacts of ocean acidification on development of the meroplanktonic larval stage of the sea urchin *Centrostephanus rodgersii*. *ICES J Mar Sci.* 2011;69: 460–464.

136. Lengyel NL, Collie JS, Valentine PC. The invasive colonial ascidian *Didemnum vexillum* on Georges Bank – Ecological effects and genetic identification. *Aquat Invasions*. 2009;4(1):143–152.
137. Bock DG, Zhan A, Lejeune C, MacIsaac HJ, Cristescu ME. Looking at both sides of the invasion: patterns of colonization in the violet tunicate *Botrylloides violaceus*. *Mol Ecol*. 2011;20(3):503–516.
138. Bullard SG, Davis CV, Shumway SE. Seasonal patterns of ascidian settlement at an aquaculture facility in the Damariscotta River, Maine. *J Shellfish Res*. 2013;32(2):255–264.
139. Dupont S, Thorndyke MC. Impact of CO₂-driven ocean acidification on invertebrates early life-history – What we know, what we need to know and what we can do. *Biogeosciences Discuss*. 2009;6(2):3109–3131.
140. Donnarumma L, Lombardi C, Cocito S, Gambi MC. Settlement pattern of *Posidonia oceanica* epibionts along a gradient of ocean acidification: an approach with mimics. *Mediterr Mar Sci*. 2014;15(3):498–509.
141. Peck LS, Clark M, Power D, et al. Acidification effects on biofouling communities: winners and losers. *Glob Chang Biol*. 2015;21(5):1907–1913.
142. Munday PL, Donelson JM, Dixon DL, Endo GG. Effects of ocean acidification on the early life history of a tropical marine fish. *Proc Biol Sci*. 2009;276(1671):3275–3283.
143. Nilsson GE, Dixon D, Domenici P, et al. Near-future carbon dioxide levels alter fish behaviour by interfering with neurotransmitter function. *Nat Clim Chang*. 2012;2(3):201–204.
144. Chung WS, Marshall JN, Watson S, Munday PL, Nilsson G. Ocean acidification slows retinal function in damselfish through interference with GABAA receptors. *J Exp Biol*. 2014;217:323–326.
145. Dixon DL, Munday PL, Jones GP. Ocean acidification disrupts the innate ability of fish to detect predator olfactory cues. *Ecol Lett*. 2010;13(1):68–75.
146. Munday PL, Cheal AJ, Dixon DL, Rummer JL, Fabricius KE. Behavioural impairment in reef fishes caused by ocean acidification at CO₂ seeps. *Nat Clim Chang*. 2014;4(6):487–492.
147. Simpson SD, Munday PL, Wittenrich ML, et al. Ocean acidification erodes crucial auditory behaviour in a marine fish. *Biol Lett*. 2011;7(6):917–920.
148. Ferrari MC, McCormick M, Munday P, et al. Effects of ocean acidification on visual risk assessment in coral reef fishes. *Funct Ecol*. 2012;26(3):553–558.
149. Whitfield PE, Gardner T, Vives S, et al. Biological invasion of the Indo-Pacific lionfish *Pterois volitans* along the Atlantic coast of North America. *Mar Ecol Prog Ser*. 2002;235:289–297.
150. Arias-González JE, González-Gándara C, Luis Cabrera J, Christensen V. Predicted impact of the invasive lionfish *Pterois volitans* on the food web of a Caribbean coral reef. *Environ Res*. 2011;111(7):917–925.
151. Green SJ, Akins JL, Maljković A, Côté JM. Invasive lionfish drive Atlantic coral reef fish declines. *PLoS One*. 2012;7(3):e32596.
152. Lesser MP, Slattery M. Phase shift to algal dominated communities at mesophotic depths associated with lionfish (*Pterois volitans*) invasion on a Bahamian coral reef. *Biol Invasions*. 2011;13(8):1955–1868.
153. Cripps IL, Munday PL, McCormick MI. Ocean acidification affects prey detection by a predatory reef fish. *PLoS One*. 2011;6(7):e22736.
154. Albins M, Hixon M. Invasive Indo-Pacific lionfish *Pterois volitans* reduce recruitment of Atlantic coral-reef fishes. *Mar Ecol Prog Ser*. 2008;367:233–238.
155. Celis-Plá PS, Hall-Spencer JM, Horta P, et al. Macroalgal responses to ocean acidification depend on nutrient and light levels. *Front Mar Sci*. 2015;2:26.
156. Lenz M, daGama BAP, Gerner NV, et al. Non-native marine invertebrates are more tolerant towards environmental stress than taxonomically related native species: Results from a globally replicated study. *Environ Res*. 2011;111(7):943–952.
157. Freider CA. Present-day nearshore pH differentially depresses fertilization in congeneric sea urchins. *Biol Bull*. 2014;226(1):1–7.
158. Kroeker KJ, Micheli F, Gambi MC. Ocean acidification causes ecosystem shifts via altered competitive interactions. *Nat Clim Change*. 2012;3:156–159.
159. Sunday JM, Calosi P, Dupont S, et al. Evolution in an acidifying ocean. *Trends Ecol Evol*. 2014;29(2):117–125.
160. Poloczanska ES, Brown CJ, Sydeman WJ, et al. Global imprint of climate change on marine life. *Nat Clim Chang*. 2013;3(10):919–925.
161. iddri.org [homepage on the Internet]. Howes EL, Joos F, Eakin M, Gattuso J. The Oceans 2015 Initiative, Part I: An updated synthesis of the observed and projected impacts of climate change on physical and biological processes in the oceans. Available from: <http://www.iddri.org/Publications/The-Oceans-2015-Initiative,Part-I-An-updated-synthesis-of-the-observed-and-projected-impacts-of-climate-change-on-physical-and>. Accessed September 7, 2015.

Research and Reports in Biodiversity Studies

Publish your work in this journal

Research and Reports in Biodiversity Studies is an international, peer-reviewed, open access journal publishing original research, reports, reviews and commentaries on all areas of biodiversity research. The manuscript management system is completely online and includes a

very quick and fair peer-review system. Visit <http://www.dovepress.com/testimonials.php> to read real quotes from published authors.

Submit your manuscript here: <http://www.dovepress.com/research-and-reports-in-biodiversity-studies-journal>

Dovepress