

PHYSICAL REVIEW E **94**, 062705 (2016)

Viscoelastic nematodynamics

Stefano S. Turzi*

Dipartimento di Matematica, Politecnico di Milano, Piazza Leonardo da Vinci 32, 20133 Milano, Italy

(Received 12 July 2016; revised manuscript received 23 November 2016; published 27 December 2016)

Nematic liquid crystals exhibit both crystallike and fluidlike features. In particular, the propagation of an acoustic wave shows an interesting occurrence of some of the solidlike features at the hydrodynamic level, namely, the frequency-dependent anisotropy of sound velocity and acoustic attenuation. The non-Newtonian behavior of nematics also emerges from the frequency-dependent viscosity coefficients. To account for these phenomena, we put forward a viscoelastic model of nematic liquid crystals, and we extend our previous theory to fully include the combined effects of compressibility, anisotropic elasticity, and dynamic relaxation, at any shear rate. The low-frequency limit agrees with the compressible Ericksen-Leslie theory, while at intermediate frequencies the model correctly captures the relaxation mechanisms underlying finite shear and bulk elastic moduli. We show that there are only four relaxation times allowed by the uniaxial symmetry.

DOI: [10.1103/PhysRevE.94.062705](https://doi.org/10.1103/PhysRevE.94.062705)

I. INTRODUCTION

For nematics made of small molecules, viscoelastic effects and nonlinear effects are usually believed not to be important. Hence, the flow of nematics can be described by the Ericksen-Leslie theory [1], where the dissipative part of the stress tensor depends linearly on the strain rate. In this approximation, nematic liquid crystals (NLCs) are non-Newtonian fluids only because of their anisotropic dissipation, while they show no static elastic anisotropy or shear stiffness and their viscous coefficients do not depend on the frequency. The dissipation function is thus quadratic in the velocity gradient, as in ordinary fluids. Elasticity appears only when director distortions are taken into account and the free energy is then supplemented with Frank's elastic energy.

However, this description is correct only at low frequencies, i.e., for low strain rates. Actual soft matter is usually viscoelastic: it has both viscosity and bulk elasticity, and the relation between stress and strain (or strain rate) is nonlinear. Viscoelastic features emerge also in nematic liquid crystals at ultrasonic frequencies. For instance, the anisotropy of sound speed and attenuation and their frequency dependence is often described in terms of an elastic material response and relaxation dynamics [2–6]. Structural relaxation processes are also explicitly mentioned in order to justify the frequency dependence of the viscosity coefficients [7–12]. Recent papers even report the measurement of a viscoelastic response in low molecular weight liquid crystals, in either the nematic or the isotropic phase, when they are subjected to low-frequency mechanical sinusoidal deformations [13,14].

While these ideas seem to be in good agreement with experiments they do not fit well with the existing hydrodynamic theories [15]. A comprehensive description of these phenomena along these lines of thought has only recently appeared [16–18]. The theory put forth in [16–18] has the merit to enable a smooth transition from a liquidlike to a solidlike response. It is characterized by an anisotropic neo-Hookean contribution to the strain energy and an evolution of the relaxed (shear-stress-free) configuration. In two earlier papers

[16,17], we have constructed a simplified theory for (slightly) compressible NLCs and applied it, with fair success, to explain quantitatively the anisotropy of sound velocity [2] and sound attenuation [19] in *N*-(4-methoxybenzylidene)-4-butylaniline (MBBA) over the range 2–14 MHz. In a subsequent paper [18], we have refined our theory to include the anisotropy of the dissipation tensor. The low-frequency and incompressible limit of our theory reproduces the classical Ericksen-Leslie theory but delivers, in addition, a new Parodi-like relation among the viscosity coefficients.

Although it has long been recognized that sound propagation is affected by the orientational order [2,19], the study of acoustic phenomena in NLCs is still an active field of research [20–24]. To some extent, this is due to the potential theoretical implications, as there is not broad agreement about the theoretical explanation of the interaction of sound and nematic order. Some time ago, a theory of sound propagation was proposed by Selinger and coworkers to explain their experimental results [25–28]. They postulated that the sound-speed anisotropy is due to a direct coupling between the nematic director and the density gradient. Later, this idea was refined by Virga [29], who has developed a thorough theory of anisotropic Korteweg (or second-gradient) fluids. However, here we do not share the point of view reported in [25,29] and we have expressed our concerns in Ref. [16]. Furthermore, the second-gradient theory does not seem to predict the correct frequency dependence of the sound speed [21].

In this paper, we reconsider and extend the model put forth in [16–18], to include the combined effects of (i) compressibility, (ii) an anisotropic neo-Hookean contribution to the strain energy, and (iii) an anisotropic gradient flow dynamics for the relaxed configuration. In so doing, we are now able to analyze a number of peculiar phenomena observed in the propagation of sound in NLCs that were only partially investigated in our previous works. Specifically, the acoustic approximation allows us to show that there are only four independent relaxation times. We calculate how the sound speed and the acoustic attenuation depend on these characteristic times and on the angle between the director and the direction of propagation. We also derive how the viscosity coefficients are affected by the relaxation dynamics. The weak-flow approximation yields the explicit dependence

*stefano.turzi@polimi.it

of the viscosity coefficients (including the bulk viscosities) on the parameters of the model.

II. DYNAMICS

We now review the main features of the theory presented in [18]. We revise it and extend it to take explicitly into account compressibility and the full spectrum of possible shear rates. Furthermore, we analyze more carefully the relaxation modes allowed by symmetry.

The first key idea is to decouple the contribution of elasticity and dissipation by writing a multiplicative decomposition of the deformation gradient \mathbf{F} (with respect to an arbitrarily chosen reference configuration, \mathcal{B}_0):

$$\mathbf{F} = \mathbf{F}_e \mathbf{G}. \quad (1)$$

The *effective deformation tensor*, \mathbf{F}_e , will measure the elastic response of the NLC, from an *evolving equilibrium configuration*, \mathcal{B}_{rel} (Fig. 1). The *relaxing deformation tensor*, \mathbf{G} , determines how this configuration locally departs from the reference configuration. Since the elastic response is determined by \mathbf{F}_e , only the effective deformation appears explicitly in the strain energy. By contrast, energy dissipation (entropy production) is only associated with the evolution of \mathbf{G} .

In order to account for anisotropic elasticity, we introduce the compressible anisotropic neo-Hookean *strain energy density* per unit mass,

$$\begin{aligned} \sigma(\rho, \mathbf{B}_e, \mathbf{n}) = & \sigma_0(\rho) + \frac{1}{2} \mu(\rho) (\text{tr}(\Psi^{-1} \mathbf{B}_e - \mathbf{I}) \\ & - \log \det(\Psi^{-1} \mathbf{B}_e)), \end{aligned} \quad (2)$$

where ρ is the density, $\rho\mu(\rho)$ is the shear modulus, $\mathbf{B}_e = \mathbf{F}_e \mathbf{F}_e^\top$ is the effective left Cauchy-Green deformation tensor, and \mathbf{I} is the identity tensor. The isotropic contribution $\sigma_0(\rho)$ penalizes density (and volume) variations and it is assumed to dominate the elastic energy. This term depends on ρ and is thus not affected by stress relaxation. By contrast, the second term in (2) depends on the evolution of \mathcal{B}_{rel} . It couples the elastic

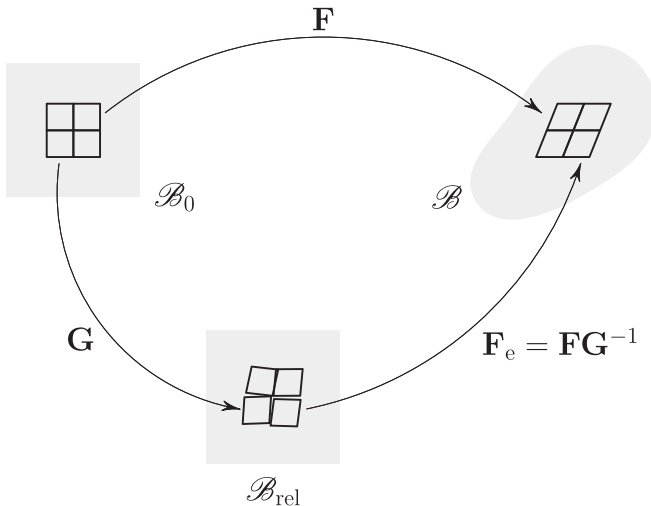


FIG. 1. Decomposition of the deformation gradient into its relaxing and effective parts.

properties of the material with the nematic director and it is minimum if and only if \mathbf{B}_e coincides with the *energetic shape tensor* [16]

$$\Psi(\rho, \mathbf{n}) = a(\rho)^2 (\mathbf{n} \otimes \mathbf{n}) + a(\rho)^{-1} (\mathbf{I} - \mathbf{n} \otimes \mathbf{n}), \quad (3)$$

where \mathbf{n} is the nematic director and $a(\rho) > 0$ is a density-dependent aspect ratio. The shape tensor Ψ is symmetric, positive definite, and with unit determinant. If nematic distortions have to be included in the model, Eq. (2) must be supplemented with the classical Oseen-Frank free-energy density [1]. For simplicity, we assume that the director field, \mathbf{n} , is uniform and fixed by some external action.

A standard procedure [16–18] then yields the Cauchy stress tensor

$$\mathbf{T} = -p(\rho, \mathbf{B}_e, \mathbf{n}) \mathbf{I} + \rho \mu(\rho) (\Psi^{-1} \mathbf{B}_e - \mathbf{I}), \quad (4)$$

where the pressurelike function is

$$\begin{aligned} p = & \rho^2 \left[\frac{\partial \sigma_0}{\partial \rho} + \frac{1}{2} \mu'(\rho) (\text{tr}(\Psi^{-1} \mathbf{B}_e - \mathbf{I}) - \log \det(\Psi^{-1} \mathbf{B}_e)) \right. \\ & \left. - \mu(\rho) \frac{3a'(\rho)}{2a(\rho)} \left(\mathbf{n} \otimes \mathbf{n} - \frac{1}{3} \mathbf{I} \right) \cdot \Psi^{-1} \mathbf{B}_e \right]. \end{aligned} \quad (5)$$

As expected, when $\mathbf{B}_e = \Psi$, the shear stress vanishes and \mathbf{T} is spherical.

The dynamics of the liquid crystal is governed by the balances of mass, momentum, and angular momentum at each point in the system. Given our assumption on the director field, the macroscopic motion of the NLC is completely described by the balance of mass and the balance of momentum. In the absence of body forces and body couples these two equations are

$$\dot{\rho} + \rho \text{div } \mathbf{v} = 0, \quad \rho \dot{\mathbf{v}} = \text{div } \mathbf{T}. \quad (6)$$

Here, an overdot indicates the material time derivative and \mathbf{v} is the velocity field.

However, a full description of the dynamics requires an evolution equation for the relaxing deformation [30,31]. Any relaxation dynamics necessarily obeys a dissipation inequality, ensuring a nonnegative entropy production. It is convenient to introduce the *codeformational derivative*

$$\mathbf{B}_e^\nabla = \dot{\mathbf{B}}_e - (\nabla \mathbf{v}) \mathbf{B}_e - \mathbf{B}_e (\nabla \mathbf{v})^\top, \quad (7)$$

where $\nabla \mathbf{v} = \dot{\mathbf{F}} \mathbf{F}^{-1}$ is the spatial velocity gradient. The quantity \mathbf{B}_e^∇ can be interpreted as the time rate of change of \mathbf{B}_e relative to a convected coordinate system that moves and deforms with the flowing liquid crystal. In this respect, \mathbf{B}_e^∇ vanishes whenever the deformation is purely elastic and there is no evolution of the natural configuration (the system does not dissipate). In this notation, the dissipation inequality for an isothermal process simply reads

$$-\frac{\partial \sigma}{\partial \mathbf{B}_e} \cdot \mathbf{B}_e^\nabla \geq 0. \quad (8)$$

When Eq. (2) is substituted into (8) this inequality takes the form

$$(\Psi^{-1} - \mathbf{B}_e^{-1}) \cdot \mathbf{B}_e^\nabla \leq 0. \quad (9)$$

It is customary, when dealing with irreversible processes near equilibrium, to interpret the rate of entropy production as

the product of “fluxes” and “forces” and to assume a linear coupling between them. If we further assume the Onsager reciprocal relations, we obtain that the evolution of the natural configuration is governed by the gradient-flow equation

$$\mathbb{D}(\mathbf{B}_e^\nabla) + \Psi^{-1} - \mathbf{B}_e^{-1} = 0, \quad (10)$$

where \mathbb{D} is a symmetric positive definite fourth-rank tensor, called the *dissipation tensor*.

III. IDENTIFICATION OF THE RELAXATION TIMES

It is natural to assume that the dissipation tensor shares the uniaxial symmetry of the shape tensor. The structure of the most general fourth-rank tensor compatible with a given material symmetry is a classical problem in linear elasticity. It is found that the most general matrix representation of a symmetric fourth-rank tensor that is transversely isotropic about \mathbf{n} has five independent parameters [32]. We interpret $\mathbb{D} : \text{Sym} \rightarrow \text{Sym}$ as an automorphism of the space of symmetric second-rank tensors, Sym . It is then natural to choose the following basis of Sym :

$$\mathbf{E}_1 = \frac{1}{\sqrt{2}}(\mathbf{e}_2 \otimes \mathbf{n} + \mathbf{n} \otimes \mathbf{e}_2), \quad (11a)$$

$$\mathbf{E}_2 = \frac{1}{\sqrt{2}}(\mathbf{e}_1 \otimes \mathbf{n} + \mathbf{n} \otimes \mathbf{e}_1) \quad (11b)$$

$$\mathbf{E}_3 = \frac{1}{\sqrt{2}}(\mathbf{e}_1 \otimes \mathbf{e}_2 + \mathbf{e}_2 \otimes \mathbf{e}_1), \quad (11c)$$

$$\mathbf{E}_4 = \frac{1}{\sqrt{2}}(\mathbf{e}_1 \otimes \mathbf{e}_1 - \mathbf{e}_2 \otimes \mathbf{e}_2) \quad (11d)$$

$$\mathbf{E}_5 = \sqrt{\frac{3}{2}}\left(\mathbf{n} \otimes \mathbf{n} - \frac{1}{3}\mathbf{I}\right), \quad \mathbf{E}_6 = \frac{1}{\sqrt{3}}\mathbf{I}, \quad (11e)$$

which is constructed from the orthonormal standard basis $(\mathbf{e}_1, \mathbf{e}_2, \mathbf{n})$ of \mathbb{R}^3 , where the z axis is chosen along the director: $\mathbf{e}_3 \equiv \mathbf{n}$. The basis $\{\mathbf{E}_i\}$ is orthonormal with respect to the dot product between second-rank tensors, defined as

$$\mathbf{L} \cdot \mathbf{M} = \text{tr}(\mathbf{M}^\top \mathbf{L}) \quad (12)$$

for any \mathbf{L}, \mathbf{M} in Sym .

It is apparent, when we study the propagation of an acoustic wave, that the relaxation times are not directly related to \mathbb{D} but rather to the eigenvalues of the fourth-rank tensor \mathbb{T} , defined as

$$\mathbb{T} = (\Psi \otimes \Psi)\mathbb{D}, \quad (13)$$

where the tensor (or Kronecker) product between two second-rank tensors is a fourth-rank tensor such that

$$(\mathbf{L} \otimes \mathbf{M})\mathbf{X} = \mathbf{L}\mathbf{X}\mathbf{M}^\top \quad \text{for all } \mathbf{L}, \mathbf{M}, \mathbf{X}, \quad (14)$$

$$(\mathbf{L} \hat{\boxtimes} \mathbf{M})\mathbf{X} = \mathbf{L} \langle \mathbf{M}, \mathbf{X} \rangle \quad (19)$$

holds for any \mathbf{L}, \mathbf{M} , and \mathbf{X} in Sym . The matrix entries in \mathbb{T} with respect to $\{\mathbf{E}_i\}$ are derived from Eqs. (18) and (19) and Eqs. (11) and (16):

$$[T_{ij}]_{\mathbf{E}} = \mathbf{E}_i \cdot \mathbb{T}\mathbf{E}_j = \sum_{p,q} (\mathbf{E}_i \cdot \mathbf{L}_p) [T_{pq}]_{\mathbf{L}} \langle \mathbf{L}_q, \mathbf{E}_j \rangle. \quad (20)$$

and then we extend its definition by linearity. The tensor \mathbb{T} should be compatible with the uniaxial symmetry about \mathbf{n} , but in general it is not symmetric with respect to the scalar product (12). However, \mathbb{T} is symmetric with respect to the scalar product $\langle \cdot, \cdot \rangle$ defined as

$$\langle \mathbf{L}, \mathbf{M} \rangle = \mathbf{L} \cdot (\Psi^{-1} \otimes \Psi^{-1})\mathbf{M} = \mathbf{L} \cdot \Psi^{-1}\mathbf{M}\Psi^{-1} \quad (15)$$

for any \mathbf{L}, \mathbf{M} in Sym [33]. In fact, it is easy to check that $\langle \mathbf{L}, \mathbb{T}\mathbf{M} \rangle = \langle \mathbb{T}\mathbf{L}, \mathbf{M} \rangle$. Therefore, we can apply the spectral theorem to diagonalize \mathbb{T} . The eigenvectors of \mathbb{T} are orthogonal with respect to $\langle \cdot, \cdot \rangle$. To further illustrate this point, let us introduce a $\langle \cdot, \cdot \rangle$ -orthonormal basis, derived from $\{\mathbf{E}_i\}$, which explicitly employs the shape tensor Ψ :

$$\mathbf{L}_1 = \sqrt{a(\rho)}\mathbf{E}_1, \quad \mathbf{L}_2 = \sqrt{a(\rho)}\mathbf{E}_2, \quad (16a)$$

$$\mathbf{L}_3 = a(\rho)^{-1}\mathbf{E}_3, \quad \mathbf{L}_4 = a(\rho)^{-1}\mathbf{E}_4, \quad (16b)$$

$$\mathbf{L}_5 = \sqrt{\frac{2}{3}}\left(a(\rho)^2\mathbf{n} \otimes \mathbf{n} - \frac{1}{2a(\rho)}(\mathbf{I} - \mathbf{n} \otimes \mathbf{n})\right), \quad (16c)$$

$$\mathbf{L}_6 = \frac{1}{\sqrt{3}}\Psi. \quad (16d)$$

The most general relaxation tensor \mathbb{T} that shares the symmetry of the shape tensor Ψ may be parameterized by five scalar coefficients: $\tau_1, \tau_2, \tau_3, \tau_4$, and Θ . Its matrix representation, in the basis $\{\mathbf{L}_i\}$, is conveniently written as

$$[\mathbb{T}]_{\mathbf{L}} = \begin{pmatrix} \tau_1 & 0 & 0 & 0 & 0 & 0 \\ 0 & \tau_1 & 0 & 0 & 0 & 0 \\ 0 & 0 & \tau_2 & 0 & 0 & 0 \\ 0 & 0 & 0 & \tau_2 & 0 & 0 \\ 0 & 0 & 0 & 0 & \tau_s + \tau_d \cos(2\Theta) & \tau_d \sin(2\Theta) \\ 0 & 0 & 0 & 0 & \tau_d \sin(2\Theta) & \tau_s - \tau_d \cos(2\Theta) \end{pmatrix},$$

where for compactness we have introduced the notation

$$\tau_s = \frac{1}{2}(\tau_3 + \tau_4), \quad \tau_d = \frac{1}{2}(\tau_3 - \tau_4). \quad (17)$$

The relaxation times τ_1, τ_2, τ_3 , and τ_4 are the eigenvalues of \mathbb{T} , while Θ is the angle between the eigenspace associated with τ_3 and \mathbf{L}_5 . If $\Theta = 0$, $[\mathbb{T}]_{\mathbf{L}}$ is diagonal. However, in general, Θ is an additional parameter of the model.

The spectral decomposition of \mathbb{T} is

$$\mathbb{T} = \sum_{p,q=1}^6 [T_{pq}]_{\mathbf{L}} \mathbf{L}_p \hat{\boxtimes} \mathbf{L}_q, \quad (18)$$

where the outer product $\hat{\boxtimes}$ is such that the identity

After some algebraic simplifications, which we omit for brevity, we finally obtain the expression of \mathbb{T} that is convenient to use during the calculations:

$$[\mathbb{T}]_{\mathbf{E}} = \begin{pmatrix} \tau_1 & 0 & 0 & 0 & 0 & 0 \\ 0 & \tau_1 & 0 & 0 & 0 & 0 \\ 0 & 0 & \tau_2 & 0 & 0 & 0 \\ 0 & 0 & 0 & \tau_2 & 0 & 0 \\ 0 & 0 & 0 & 0 & \tau_s + \frac{\tau_d((4a^6+a^3+4)\cos(2\Theta)-\sqrt{2}(a^3-1)^2\sin(2\Theta))}{9a^3} & \frac{\tau_d((2a^6+8a^3-1)\sin(2\Theta)+2\sqrt{2}(-2a^6+a^3+1)\cos(2\Theta))}{9a^3} \\ 0 & 0 & 0 & 0 & \frac{\tau_d((-a^6+8a^3+2)\sin(2\Theta)+2\sqrt{2}(a^6+a^3-2)\cos(2\Theta))}{9a^3} & \tau_s + \frac{\tau_d(\sqrt{2}(a^3-1)^2\sin(2\Theta)-(4a^6+a^3+4)\cos(2\Theta))}{9a^3} \end{pmatrix}$$

Equation (13) can then be inverted to yield the dissipation tensor

$$\mathbb{D} = (\Psi^{-1} \otimes \Psi^{-1})\mathbb{T}. \quad (21)$$

The mathematical structure described above shows that \mathbb{D} is positive definite if and only if \mathbb{T} is positive definite, i.e., if all the relaxation times are strictly greater than 0,

$$\tau_1 > 0, \quad \tau_2 > 0, \quad \tau_3 > 0, \quad \tau_4 > 0, \quad (22)$$

a condition that it is very natural to take for granted.

IV. WEAK-FLOW APPROXIMATION

When the relaxation mechanisms are much faster than the macroscopic dynamics, the material effectively behaves as an ordinary fluid and the model is expected to reduce to the compressible Ericksen-Leslie theory. An analysis of this approximation in the incompressible case has been presented in [18]. Here, we revise it to include the compressibility.

The characteristic time of deformation is related to the velocity gradient, so that we posit $\tau_{\text{def}} = 1/\|\nabla\mathbf{v}\|$. This must be compared with the overall relaxation time, which we can define as $\tau_{\text{rel}} = \|\mathbb{T}\|$. We want to study the asymptotic approximation of the model in the limit $\tau_{\text{rel}} \ll \tau_{\text{def}}$, i.e.,

$$\tau_{\text{rel}}\|\nabla\mathbf{v}\| = \varepsilon \ll 1,$$

where ε is a small parameter. This is a “weak-flow approximation,” where the material reorganization is much faster than the deformation. Therefore, the effective tensor \mathbf{B}_e differs from its equilibrium value by only a small amount:

$$\mathbf{B}_e = \Psi + \mathbf{B}_1, \quad \text{with} \quad \|\mathbf{B}_1\| = O(\varepsilon). \quad (23)$$

By inserting (23) into the evolution equation (10), to first order we find

$$\Psi^{-1}\mathbf{B}_1 = -\mathbb{D}(\Psi^{\nabla})\Psi, \quad (24)$$

which yields the following approximation for the stress tensor:

$$\mathbf{T} = -p\mathbf{I} - \rho\mu(\rho)\mathbb{D}(\Psi^{\nabla})\Psi, \quad (25)$$

with

$$p = \rho^2 \frac{\partial\sigma_0}{\partial\rho} + \rho^2\mu(\rho) \frac{3a'(\rho)}{2a(\rho)} \text{dev}(\mathbf{n} \otimes \mathbf{n}) \cdot (\mathbb{D}(\Psi^{\nabla})\Psi). \quad (26)$$

The codeformational derivative of the shape tensor is

$$\begin{aligned} \Psi^{\nabla} &= \frac{\rho a'(\rho)}{a(\rho)^2} (\text{tr } \mathbf{D})(\mathbf{I} - (1 + 2a(\rho)^3)(\mathbf{n} \otimes \mathbf{n})) \\ &+ (a(\rho)^2 - a(\rho)^{-1})(\dot{\mathbf{n}} \otimes \mathbf{n} + \mathbf{n} \otimes \dot{\mathbf{n}} \\ &- \mathbf{D}\mathbf{n} \otimes \mathbf{n} - \mathbf{n} \otimes \mathbf{D}\mathbf{n}) - 2a(\rho)^{-1}\mathbf{D}, \end{aligned} \quad (27)$$

where $\dot{\mathbf{n}} = \dot{\mathbf{n}} - \mathbf{W}\mathbf{n}$ is the corotational derivative of the nematic director, $\mathbf{D} = \text{sym}(\nabla\mathbf{v})$ is the stretching, and $\mathbf{W} = \text{skw}(\nabla\mathbf{v})$ is the spin. We are now in a position to compare our result, (25), with the most general linear viscous stress compatible with the nematic structure, as given in the compressible Ericksen-Leslie theory, namely,

$$\begin{aligned} \mathbf{T}_{\text{EL}} &= -p_{\text{iso}}\mathbf{I} + \alpha_1(\mathbf{n} \cdot \mathbf{D}\mathbf{n})(\mathbf{n} \otimes \mathbf{n}) + \alpha_2(\dot{\mathbf{n}} \otimes \mathbf{n}) \\ &+ \alpha_3(\mathbf{n} \otimes \dot{\mathbf{n}}) + \alpha_4\mathbf{D} + \alpha_5(\mathbf{D}\mathbf{n} \otimes \mathbf{n}) + \alpha_6(\mathbf{n} \otimes \mathbf{D}\mathbf{n}) \\ &+ \alpha_7((\text{tr } \mathbf{D})(\mathbf{n} \otimes \mathbf{n}) + (\mathbf{n} \cdot \mathbf{D}\mathbf{n})\mathbf{I}) + \alpha_8(\text{tr } \mathbf{D})\mathbf{I}, \end{aligned} \quad (28)$$

where $p_{\text{iso}}(\rho) = \rho^2\sigma'_0(\rho)$ is the isotropic pressure function. After some algebra, the Leslie coefficients are identified as

$$\alpha_1 = \rho\mu \left(\tau_2 - \frac{(a^3+1)^2}{a^3}\tau_1 + 3\tau_3(\cos\Theta)^2 + 3\tau_4(\sin\Theta)^2 \right), \quad (29a)$$

$$\alpha_2 = -\rho\mu(a^3-1)\tau_1, \quad (29b)$$

$$\alpha_3 = -\rho\mu(1-a^{-3})\tau_1, \quad (29c)$$

$$\alpha_4 = 2\rho\mu\tau_2, \quad (29d)$$

$$\alpha_5 = \rho\mu((1+a^3)\tau_1 - 2\tau_2), \quad (29e)$$

$$\alpha_6 = \rho\mu((1+a^{-3})\tau_1 - 2\tau_2), \quad (29f)$$

$$\begin{aligned} \alpha_7 &= \rho\mu(\tau_2 + \tau_3 \cos\Theta((3\kappa-1)\cos(\Theta) + \sqrt{2}\sin\Theta) \\ &+ \tau_4 \sin\Theta((3\kappa-1)\sin(\Theta) - \sqrt{2}\cos\Theta)), \end{aligned} \quad (29g)$$

$$\begin{aligned} \alpha_8 &= \rho\mu \left(-\tau_2 + \frac{1}{6}\tau_3((9\kappa^2-6\kappa-1)\cos(2\Theta)) \right. \\ &+ 9\kappa^2 + 2\sqrt{2}(3\kappa-1)\sin(2\Theta) - 6\kappa + 3 \\ &- \frac{1}{6}\tau_4((9\kappa^2-6\kappa-1)\cos(2\Theta)) \\ &\left. - 9\kappa^2 + 2\sqrt{2}(3\kappa-1)\sin(2\Theta) + 6\kappa - 3 \right), \end{aligned} \quad (29h)$$

where we have defined $\kappa(\rho) = \rho a'(\rho)/a(\rho)$. These viscosity coefficients satisfy identically the well-known Parodi relation [34],

$$\alpha_2 + \alpha_3 = \alpha_6 - \alpha_5, \quad (30)$$

and the nonlinear identities [18],

$$\frac{\alpha_2}{\alpha_3} = \frac{\alpha_4 + \alpha_5}{\alpha_4 + \alpha_6} = a^3. \quad (31)$$

V. ACOUSTIC APPROXIMATION

In Sec. IV we have studied the approximation of our model for weak flows and large deformations. We now analyze the “dual” approximation, where the deformations are small and the NLC is only weakly compressible, but the shear rates are virtually high. In Refs. [16,17] we have studied a similar problem, under the simplifying assumption of a single relaxation time and nearly isotropic shape tensor, i.e., $a(\rho) \approx 1$. Here, we reconsider the nematoacoustic problem we tackled in [16] but in the more general framework of Sec. II, with the four relaxation times allowed by symmetry and arbitrary high anisotropies of the shape tensor.

A plane-wave solution is represented by a displacement field of the form

$$\mathbf{u}(\mathbf{x}, t) = \varepsilon \mathbf{a} \operatorname{Re}\{e^{i\phi(\mathbf{x}, t)}\}, \quad (32a)$$

$$\phi(\mathbf{x}, t) = \hat{\mathbf{k}} \cdot \mathbf{x} - \omega t, \quad \hat{\mathbf{k}} = \mathbf{k} + i\ell, \quad (32b)$$

where $\phi(\mathbf{x}, t)$ is a complex phase, $\hat{\mathbf{k}}$ is a complex wave vector, ω is the angular frequency, $\varepsilon \ll 1$ is a dimensionless small parameter that scales the amplitude of the wave, and the vector \mathbf{a} determines the amplitude and the polarization of the wave (e.g., longitudinal or transversal if \mathbf{a} is parallel or orthogonal to \mathbf{k}). The real part of $\hat{\mathbf{k}}$ is the ordinary wave vector $\mathbf{k} = k\mathbf{e}$, with \mathbf{e} a unit vector along the propagation direction. The imaginary part of $\hat{\mathbf{k}}$ determines the attenuation of the wave. For later convenience in calculations, we retain the complex notation with the implicit understanding that only the real part of the equations has a physical meaning.

To order $O(\varepsilon)$, ansatz (32) implies

$$\mathbf{v} = -i\omega\varepsilon\mathbf{a}e^{i\phi}, \quad \dot{\mathbf{v}} = -\omega^2\varepsilon\mathbf{a}e^{i\phi} \quad (33a)$$

$$\mathbf{F} = \mathbf{I} + \varepsilon\mathbf{F}_1 = \mathbf{I} + i\varepsilon e^{i\phi}(\mathbf{a} \otimes \hat{\mathbf{k}}), \quad (33b)$$

$$\rho = \rho_0 + \varepsilon\rho_1 = \rho_0(1 - i\varepsilon e^{i\phi}(\mathbf{a} \cdot \hat{\mathbf{k}})), \quad (33c)$$

$$a(\rho) = a_0 + \varepsilon \frac{a_1}{\rho_0} \rho_1, \quad a'(\rho_0) = a_1/\rho_0. \quad (33d)$$

The density-dependent shape tensor and dissipation tensor are perturbed analogously. We omit their explicit expressions, which can be easily calculated from Eqs. (33), but we write formally $\Psi = \Psi_0 + \varepsilon\Psi_1$ and $\mathbb{D} = \mathbb{D}_0 + \varepsilon\mathbb{D}_1$.

Our perturbative approach based on small density variations is particularly suited to analysis of the quasi-incompressible response of liquids. In this approximation, tiny density variations should imply fairly large pressure changes. Specifically, the isotropic pressure function $p_{\text{iso}}(\rho) = \rho^2\sigma'_0(\rho)$ is expanded as

$$p_{\text{iso}}(\rho_0 + \varepsilon\rho_1) = p_0 + \varepsilon p_1 \rho_1,$$

with $p_0 = p_{\text{iso}}(\rho_0)$ and $p'_{\text{iso}}(\rho_0) = p_1$. We recall that $v_0 = \sqrt{p_1}$ is the (isotropic) sound speed in ordinary liquids, and $\rho_0 p_1$ is usually referred to as the bulk modulus. It measures the material response to compression. The pressure variations are $\Delta p \approx p_1 \Delta\rho$ and quasi-incompressibility implies that $\Delta p/p_0 \gg \Delta\rho/\rho_0$, i.e., $\rho_0 p_1 \gg p_0$. On the other hand, for the asymptotic procedure to be successful, it is required that $p_0 \gg \varepsilon p_1 \rho_1$. Hence, we assume that

$$\rho_0 p_1 \gg p_0 \gg \varepsilon p_1 \rho_1. \quad (34)$$

The evolution equation, (10), controls the relaxation mechanisms of the fluids. Its asymptotic analysis is best studied by means of the inverse relaxing strain $\mathbf{H} = (\mathbf{G}^\top \mathbf{G})^{-1}$, so that the effective strain can be written as $\mathbf{B}_e = \mathbf{F}\mathbf{H}\mathbf{F}^\top$. To order $O(\varepsilon)$, we find

$$\mathbf{H} = \Psi_0 + \varepsilon(\mathbf{H}_1 + \Psi_1), \quad (35)$$

$$\mathbf{B}_e^\nabla = \mathbf{F}\dot{\mathbf{H}}\mathbf{F}^\top = \varepsilon(\dot{\mathbf{H}}_1 + \dot{\Psi}_1), \quad (36)$$

where \mathbf{H}_1 is an unknown tensor to be determined by solving Eq. (10). To first order, and after the transient has died out, this equation yields

$$\begin{aligned} (\mathbb{I} - i\omega(\Psi_0 \otimes \Psi_0)\mathbb{D}_0)\mathbf{H}_1 \\ = -\mathbf{F}_1\Psi_0 - \Psi_0\mathbf{F}_1^\top + i\omega(\Psi_0 \otimes \Psi_0)\mathbb{D}_0(\Psi_1), \end{aligned} \quad (37)$$

where \mathbb{I} is the fourth-rank identity tensor. This equation clearly shows that the relaxation dynamics is governed by the inversion of the tensor $\mathbb{I} - i\omega(\Psi_0 \otimes \Psi_0)\mathbb{D}_0$. Hence, the normal modes of relaxation are related to the eigenmodes of $(\Psi_0 \otimes \Psi_0)\mathbb{D}_0$. The fourth-rank time relaxation tensor is then found to be $\mathbb{T} = (\Psi \otimes \Psi)\mathbb{D}$, in agreement with Eq. (13).

From Eqs. (3)–(5), and Eqs. (35)–(37) we readily obtain the stress tensor \mathbf{T} . The calculations are straightforward but very lengthy, so they are not reported here. They are best automated with a computer algebra software such as MATHEMATICA. However, it is interesting to observe that by comparing the stress tensor \mathbf{T} with \mathbf{T}_{EL} as given in Eq. (28), we derive the frequency dependence of the Leslie viscosities predicted by our model. The low-frequency limit ($\omega = 0$) coincides with the previous result, (29), which was obtained by quite a different procedure. We find

$$\begin{aligned} \alpha_1 = \rho_0\mu_0 \left(-\frac{(a_0^3 + 1)^2}{a_0^3} \frac{\tau_1}{1 + (\omega\tau_1)^2} + \frac{\tau_2}{1 + (\omega\tau_2)^2} \right. \\ \left. + C_{13} \frac{\tau_3}{1 + (\omega\tau_3)^2} + C_{14} \frac{\tau_4}{1 + (\omega\tau_4)^2} \right), \end{aligned} \quad (38a)$$

$$\alpha_2 = -\rho_0\mu_0(a_0^3 - 1) \frac{\tau_1}{1 + (\omega\tau_1)^2}, \quad (38b)$$

$$\alpha_3 = -\rho_0\mu_0(1 - a_0^{-3}) \frac{\tau_1}{1 + (\omega\tau_1)^2}, \quad (38c)$$

$$\alpha_4 = \rho_0\mu_0 \frac{2\tau_2}{1 + (\omega\tau_2)^2}, \quad (38d)$$

$$\alpha_5 = \rho_0\mu_0 \left(\frac{(a_0^3 + 1)\tau_1}{1 + (\omega\tau_1)^2} - \frac{2\tau_2}{1 + (\omega\tau_2)^2} \right), \quad (38e)$$

$$\alpha_6 = \rho_0\mu_0 \left(\frac{(1 + a_0^{-3})\tau_1}{1 + (\omega\tau_1)^2} - \frac{2\tau_2}{1 + (\omega\tau_2)^2} \right), \quad (38f)$$

$$\begin{aligned} \alpha_7 = \rho_0\mu_0 \left(\frac{\tau_2}{1 + (\omega\tau_2)^2} + C_{73} \frac{\tau_3}{1 + (\omega\tau_3)^2} + C_{74} \frac{\tau_4}{1 + (\omega\tau_4)^2} \right), \\ (38g) \end{aligned}$$

$$\alpha_8 = \rho_0\mu_0 \left(-\frac{\tau_2}{1 + (\omega\tau_2)^2} + C_{83} \frac{\tau_3}{1 + (\omega\tau_3)^2} + C_{84} \frac{\tau_4}{1 + (\omega\tau_4)^2} \right), \quad (38h)$$

where

$$C_{13} = 3(\cos \Theta)^2, \quad C_{14} = 3(\sin \Theta)^2, \quad (39a)$$

$$C_{73} = \cos \Theta((3\kappa_0 - 1) \cos \Theta + \sqrt{2} \sin \Theta), \quad (39b)$$

$$C_{74} = \sin \Theta((3\kappa_0 - 1) \sin \Theta - \sqrt{2} \cos \Theta), \quad (39c)$$

$$C_{83} = (2\sqrt{2}(3\kappa_0 - 1) \sin(2\Theta) + (9\kappa_0^2 - 6\kappa_0 - 1) \cos(2\Theta) + 9\kappa_0^2 - 6\kappa_0 + 3)/6, \quad (39d)$$

$$C_{84} = (-2\sqrt{2}(3\kappa_0 - 1) \sin(2\Theta) - (9\kappa_0^2 - 6\kappa_0 - 1) \cos(2\Theta) + 9\kappa_0^2 - 6\kappa_0 + 3)/6, \quad (39e)$$

and $\mu_0 = \mu(\rho_0)$, $\kappa_0 = a_1/a_0$. The identities, (30) and (31), still hold true at any frequency.

Solution of the Christoffel equation

In order to investigate the propagation of sound we have to solve the balance of momentum equation (6b). In the acoustic approximation, to first order this reads

$$-\rho_0 \omega^2 \mathbf{a} e^{i\phi} = i \mathbf{T} \hat{\mathbf{k}}. \quad (40)$$

The unknowns of this complex equation are the amplitude vector \mathbf{a} , which determines the polarization of the sound wave, the sound phase velocity $v_s = \omega/k$, and the attenuation vector ℓ . However, the solution of Eq. (40) is obscured by the fact that the amplitude vector \mathbf{a} is implicitly contained in the stress tensor. To make the mathematical structure of Eq. (40) more transparent, we observe that \mathbf{T} depends linearly on \mathbf{a} so that we can define two second-rank tensors, \mathbf{A}_r and \mathbf{A}_i , such that

$$-\frac{e^{-i\phi}}{\rho_0} i \mathbf{T} \hat{\mathbf{k}} = (\mathbf{A}_r + i \mathbf{A}_i) \mathbf{a}. \quad (41)$$

Equation (40) can now be recast in the form of a complex eigenvalue problem, whose real and imaginary parts are

$$\begin{cases} \mathbf{A}_r \mathbf{a} = \omega^2 \mathbf{a}, \\ \mathbf{A}_i \mathbf{a} = 0. \end{cases} \quad (42)$$

Equation (42) is known as the Christoffel equation in the theory of acoustic propagation in solids [35]. Its real part, Eq. (42a), determines the direction of polarization of the wave and the sound speed. The imaginary part, Eq. (42b), identifies the attenuation.

The Christoffel equation is still too complicated to be solved directly. One simplifying assumption, very natural in our context, is that the stored energy density, (2), is only weakly anisotropic and it is dominated by its first term [16]. In mathematical terms, we posit that the shear modulus $\rho_0 \mu_0$ is much smaller than the bulk modulus $\rho_0 p_1$, so that their ratio is low:

$$\eta = \mu_0/p_1 \ll 1. \quad (43)$$

1. Sound speed

According to Eq. (42a), the amplitude vector \mathbf{a} must be an eigenvector of \mathbf{A}_r . Since the matrix \mathbf{A}_r depends on the wave number k , we can determine the sound speed $v_s = \omega/k$ by imposing that ω^2 is an eigenvalue of \mathbf{A}_r . Hence, the equation

for the sound speed is

$$\det(\mathbf{A}_r - \omega^2 \mathbf{I}) = 0, \quad (44)$$

which can be solved without prior knowledge of the polarization \mathbf{a} . Given the weak anisotropy assumption, (43), we look for a solution of Eq. (44) in the form of an asymptotic expansion, $v_s = v_0 + \eta v_1 + o(\eta)$, where $v_0 = \sqrt{p_1}$. After some algebra, we find

$$v_s = v_0 + \eta v_0 \left[A_0^{(0)} + \sum_{i=1}^4 \frac{A_i^{(0)}}{1 + (\omega \tau_i)^2} + \left(A_0^{(2)} + \sum_{i=1}^4 \frac{A_i^{(2)}}{1 + (\omega \tau_i)^2} \right) \cos(2\theta) + \left(A_0^{(4)} + \sum_{i=1}^4 \frac{A_i^{(4)}}{1 + (\omega \tau_i)^2} \right) \cos(4\theta) \right], \quad (45)$$

with

$$A_0^{(0)} = (a_0^3 + a_0^{-3} + 8\kappa_0(3\kappa_0 + 1) + 14)/16, \quad (46a)$$

$$A_1^{(0)} = -(a_0^3 + 1)^2/(16a_0^3), \quad (46b)$$

$$A_2^{(0)} = -3/16, \quad (46c)$$

$$A_3^{(0)} = (-8\sqrt{2}(6\kappa_0 + 1) \sin(2\Theta) + (5 - 24\kappa_0(3\kappa_0 + 1)) \cos(2\Theta) - 3(8\kappa_0(3\kappa_0 + 1) + 9))/96, \quad (46d)$$

$$A_4^{(0)} = (8\sqrt{2}(6\kappa_0 + 1) \sin(2\Theta) - (5 - 24\kappa_0(3\kappa_0 + 1)) \cos(2\Theta) - 3(8\kappa_0(3\kappa_0 + 1) + 9))/96, \quad (46e)$$

$$A_0^{(2)} = 3\kappa_0/2, \quad A_1^{(2)} = 0, \quad A_2^{(2)} = 1/4, \quad (46f)$$

$$A_3^{(2)} = -\cos \Theta((6\kappa_0 + 1) \cos \Theta + 2\sqrt{2} \sin \Theta)/4, \quad (46g)$$

$$A_4^{(2)} = -\sin \Theta((6\kappa_0 + 1) \sin \Theta - 2\sqrt{2} \cos \Theta)/4, \quad (46h)$$

$$A_0^{(4)} = -(a_0^3 - 1)^2/(16a_0^3), \quad (46i)$$

$$A_1^{(4)} = (a_0^3 + 1)^2/(16a_0^3), \quad (46j)$$

$$A_2^{(4)} = -1/16, \quad (46k)$$

$$A_3^{(4)} = -3(\cos \Theta)^2/16, \quad A_4^{(4)} = -3(\sin \Theta)^2/16. \quad (46l)$$

The amplitude vector \mathbf{a} is the eigenvector of \mathbf{A}_r relative to the eigenvalue ω^2 . It is noteworthy that the matrix \mathbf{A}_r depends on the wave number $k = \omega/v_s$, with v_s as given in Eq. (45). To leading order, we obtain, as expected, purely longitudinal waves, i.e., $\mathbf{a} = A_0 \mathbf{e}$. The small $O(\eta)$ correction to the polarization is orthogonal to \mathbf{e} and can be calculated explicitly, but its long awkward expression is not particularly illuminating and is not reported here for brevity.

2. Sound attenuation

Finally, the attenuation vector is found by solving Eq. (42b), where ℓ enters implicitly into the definition of \mathbf{A}_i . Since the wave is longitudinal to leading order, the attenuation vector ℓ

is such that $\mathbf{A}_i \mathbf{e} = 0$. This equation yields

$$\begin{aligned} \frac{\ell}{\eta k_0} = & \sum_{i=1}^4 \frac{\omega \tau_i}{1 + (\omega \tau_i)^2} (B_i^{(0)} + B_i^{(2)} \cos(2\theta) + B_i^{(4)} \cos(4\theta)) \mathbf{e} \\ & + \sum_{i=1}^4 \frac{\omega \tau_i}{1 + (\omega \tau_i)^2} (C_i^{(2)} \sin(2\theta) + C_i^{(4)} \sin(4\theta)) \mathbf{t}, \end{aligned} \quad (47)$$

where $k_0 = \omega/v_0$, and \mathbf{t} is the unit vector orthogonal to \mathbf{e} , which belongs to the plane $\text{span}\{\mathbf{e}, \mathbf{n}\}$, such that $\mathbf{n} = \cos \theta \mathbf{e} + \sin \theta \mathbf{t}$. The coefficients are

$$B_i^{(h)} = -A_i^{(h)}, \quad h = 0, 2, 4, \quad i = 1, 2, 3, 4; \quad (48)$$

$$C_1^{(2)} = -(a_0^6 - 1)/(4a_0^3), \quad (49a)$$

$$C_i^{(2)} = -A_i^{(2)}, \quad i = 2, 3, 4, \quad (49b)$$

$$C_i^{(4)} = -2A_i^{(4)}, \quad i = 1, 2, 3, 4. \quad (49c)$$

VI. DISCUSSION

We have developed a viscoelastic theory of nematic liquid crystals that accounts for both elastic and relaxation effects, based only on material symmetry requirements, compatibility with thermodynamics, and Onsager reciprocal relations. The uniaxial symmetry implies that there are only four possible relaxation times. Using a weak-flow approximation, we are able to predict how the eight viscosities of the compressible Ericksen-Leslie model depend on these relaxation times. The acoustic approximation of our theory provides a number of further interesting results. First, we have obtained the frequency dependence of the eight viscosity coefficients, the sound speed, and the attenuation. We have seen that each of these quantities is a superposition of relaxing terms, each of which is associated with a single relaxation time. In particular, according to Eqs. (38), we have modeled NLCs as *shear-thinning* fluids: at low shear rates, the shear stress is proportional to $\nabla \mathbf{v}$, and the viscosity approaches a constant value. At higher shear rates the viscosity decreases with increasing shear rate. This behavior is observed in most (but not all) polymeric liquids [36]. Second, we have found how the sound speed and the acoustic attenuation depend on the frequency of the sound wave and on the angle between the director and the wave vector.

Finally, it is noteworthy that our theory should be able to cover with continuity a broad spectrum of possible behaviors, from isotropic viscous fluids to nematic elastomers. In particular, it should equally well be applicable to polymeric anisotropic fluids, i.e., macromolecular liquid crystalline polymers.

A. Relaxation times for MBBA

In principle, our results are in good qualitative agreement with experiments. In order to make this comparison quantitatively precise, it is desirable to fit the experimental measures and thus find the parameters of our model. However, at present, this seems to be an intractable task and only a rough estimate of the parameters can be aimed at. There are three main reasons for this.

The first reason is theoretical: our theory does not account for partial order and temperature effects. By contrast, relaxation times, viscosity coefficients, and acoustic properties are known to depend on the temperature and degree of order. We plan to extend our theory in a future paper to include the effects of partial order. For the present purposes, we try to select the experimental data sharing the same degree of order and we obtain a crude reconstruction of the nominal values of nematic viscosities at perfect order $S = 1$ from values measured for partially ordered NLCs by replacing each $\mathbf{n} \otimes \mathbf{n}$ term in the Cauchy stress tensor with the corresponding second-moment $S(\mathbf{n} \otimes \mathbf{n})$.

The second reason is that the experimental data at our disposal are scattered in the literature among various sources from the early 1970s. Therefore, the experimental settings that we have to cope with may differ with respect to temperature, sample purity, material degradation, and accuracy of the experimental techniques.

The final reason is that ultrasonic measurements are usually performed on a limited range of frequencies, typically below 100 MHz. However, to be able to determine the relaxation times associated with the fast relaxation modes ($< 10^{-9}$ s), we need to study the propagation of sound in the gigahertz range. Modern techniques based on Brillouin scattering seem to enable the analysis of sound propagation up to tens of gigahertz. However, we were not able to find such measurements for MBBA in the right temperature range.

Consistently with what is done in Refs. [16,18,29,37], we use what seems to be a reasonably coherent set of data for MBBA: (i) the shear viscosities as suggested in Ref. [38] (except for α_3 ; see [18]), at $T = 25^\circ\text{C}$, corresponding to a degree of order $S = 0.66$, according to [18]; (ii) the anisotropic profile of the sound speed at 2, 6, 10, and 14 MHz and $T = 25^\circ\text{C}$ as given in Fig. 3 in Ref. [2]; and (iii) the attenuation anisotropy as given in Fig. 2 in Ref. [19].

There are eight unknown parameters specific to our model: the shear modulus $\rho_0 \mu_0$ (or, equivalently, η), the aspect ratio a_0 , its compressibility $\kappa_0 = a_1/a_0$, four relaxation times, τ_1, τ_2, τ_3 , and τ_4 , and the angle Θ . In order to simplify the fitting procedure, we have to reduce the dimension of the parameter space. To this end, we evaluate the aspect ratio a_0 by means of Eq. (31), using the experimental measure [38] of α_4 and the extrapolated values of α_5 and α_6 from $S = 0.66$ to $S = 1$. The values of α_4 and α_5 are also used to determine the products of the shear modulus, $\rho_0 \mu_0$, with τ_1 and τ_2 . A further equation linking τ_3, τ_4 , and Θ is obtained from the S^2 -rescaled value of α_1 .

We are now able to determine the remaining parameters, namely, $\rho_0 \mu_0, \kappa_0, \tau_4$, and Θ , by fitting the functional dependence of the velocity on the angle θ at four frequencies [2]. The best estimated model parameters are reported in Table I. It is clear in Fig. 2 that the fit describes the velocity data quite well. The velocity anisotropy is defined as $\Delta v/v = (v_s(\theta = 0) - v_s(\theta = \pi/2))/v_s(\theta = \pi/2)$.

Despite the unrefined data at hand and the necessary simplifying assumptions in the fitting procedure, the values in Table I have some predictive power. For example, α_2 (which was not part of the optimization procedure) is found to be -0.096 Pa s, against an experimental value of -0.11 Pa s. The values of the bulk viscosities, α_7 and α_8 , are predicted to be 0.056

TABLE I. Values of the model parameters identified by the experimental MBBA viscosity coefficients [38] and a best fit of the velocity anisotropy [2]. See the text for details. The temperature of the samples is in all cases 25°C, corresponding to a degree of order $S \approx 0.66$. Standard values for the density ($\rho_0 = 10^3 \text{ kg/m}^3$) and the isotropic sound speed ($v_0 = 1540 \text{ m/s}$) are used.

a_0	η	κ_0	τ_1 (ns)	τ_2 (ns)	τ_3 (ns)	τ_4 (ns)	Θ
1.85	1.22×10^{-3}	0.628	9.42	14.2	17.1	32.9	0.0

and 0.035 Pa.s, respectively. Furthermore, we compare the theoretical attenuation anisotropy (in decibels per unit flight time) with the measured data in Ref. [19], which were not included in the fit. The remarkable agreement of theory and experiment in this case is clearly displayed in Fig. 3. The velocity and attenuation anisotropies show a similar functional dependence on the frequency. However, by contrast with [16], they are not exactly equivalent. The universal character of the frequency dependence of the relaxation processes that was observed in [16] is a consequence of the single-relaxation-time approximation.

Interestingly, the four relaxation times are roughly of the same order of magnitude, in the range of tens of nanoseconds. These values are consistent with the relaxation time ($\approx 20 \text{ ns}$) estimated on different grounds by Mullen *et al.* [2] and with Refs. [7–12] where only one or two relaxation times are used to fit the frequency profile of the viscosity coefficients. Furthermore, it provides an *a posteriori* justification of the validity of the one-time approximation employed in [16].

B. The effects of temperature

The extension of our theory to include the effects of partial order and temperature comprises a deep review of the whole model and its assumptions. Therefore, it is better postponed to a future paper. However, some of the key ingredients of such an extension can already be identified. The temperature dependence is obviously caused by a superposition of two effects: first, the influence of the degree of order below the

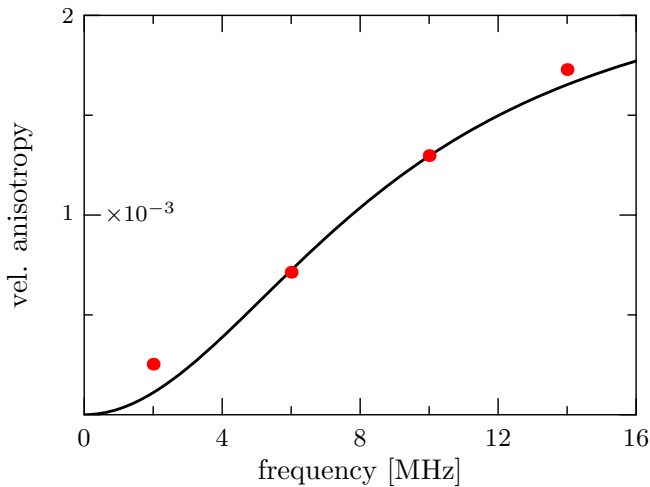


FIG. 2. Frequency dependence of the velocity anisotropy. The solid line represents our fit to the four relaxation times and the model parameters listed in Table I. Experimental points are taken from [2].

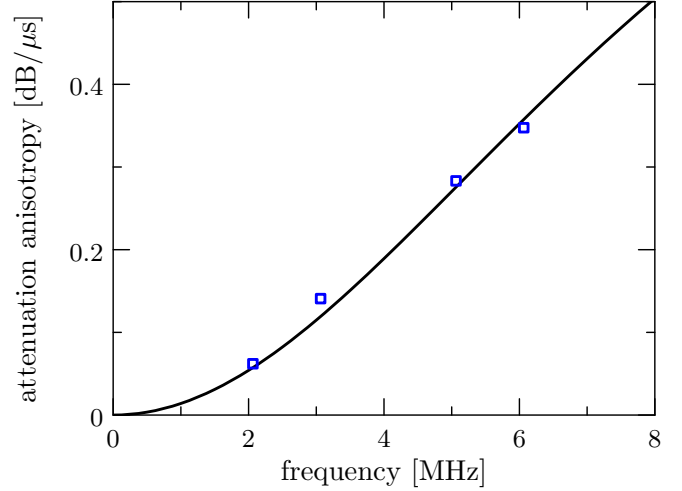


FIG. 3. Frequency dependence of the attenuation anisotropy. The solid line represents our theoretical estimate obtained with the model parameters listed in Table I. Experimental points are taken from [19].

transition nematic-isotropic temperature T_{NI} . This implies the introduction in the theory of the de Gennes ordering tensor \mathbf{Q} . One way to get around this is simply to relate the orientational order to the positional order of the molecules. Specifically, we may assume that the degree of order S is related to the shape aspect ratio by the identity $a = e^{bS/3}$, where b is a phenomenological parameter that describes the coupling strength between orientational order and shape tensor. In the isotropic phase, when $S = 0$, this relation yields $a = 1$, i.e., $\Psi = \mathbf{I}$, which consistently corresponds to an isotropic distribution for both the orientation and the intermolecular distance of the molecules.

Second, another important effect is that also the relaxation times depend on the temperature. A standard assumption in this respect is to assume a nearly exponential temperature

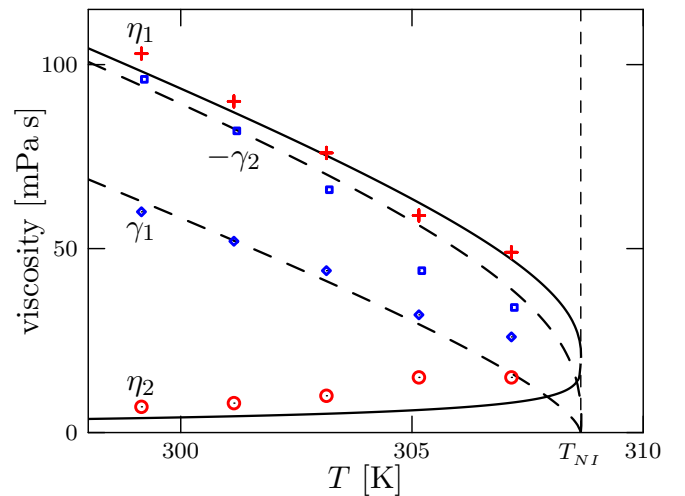


FIG. 4. Temperature dependence of the Miesowicz coefficients for 5CB. Solid lines represent the theoretical estimates of η_1 and η_2 ; the dashed lines show γ_1 and $-\gamma_2$. Experimental values are extracted from [40]. The isotropic viscosity α_4 is taken from [41]. The isotropic-nematic transition temperature is $T_{NI} = 35.5^\circ\text{C}$.

dependence, which is known from isotropic liquids (Arrhenius-type law) [36,38,39]. Therefore, we posit

$$\tau_1 = \tau_{01} \exp\left(\frac{A}{T - T_0}\right), \quad (50)$$

where A , T_0 , and τ_{01} are empirical model parameters.

It is instructive to compare these assumptions with the recent experimental data, reported in Ref. [40], on the classical 5CB liquid crystal compound. With the aid of Eqs. (29), the Miesowicz viscosities are found to be

$$\gamma_1 = \alpha_3 - \alpha_2 = 2\mu\rho\tau_1(\cosh(bS) - 1), \quad (51a)$$

$$\gamma_2 = \alpha_2 + \alpha_3 = -2\mu\rho\tau_1 \sinh(bS), \quad (51b)$$

$$\eta_1 = (\alpha_4 + \alpha_5 - \alpha_2)/2 = \mu\rho\tau_1 e^{bS}, \quad (51c)$$

$$\eta_2 = (\alpha_4 + \alpha_6 + \alpha_3)/2 = \mu\rho\tau_1 e^{-bS}. \quad (51d)$$

Furthermore, the functional dependence of the degree of order on the temperature is assumed to be $S = (1 - T/T_{\text{NI}})^\beta$, where $T_{\text{NI}} = 35.5^\circ\text{C}$ is the isotropic-nematic transition temperature for 5CB and β is a fitting parameter. The good agreement of Eqs. (51) with the experimental data taken from [40] is shown in Fig. 4. The fitting was obtained with $\mu\rho\tau_{01} \approx 19.83 \text{ mPa} \cdot \text{s}$, $A \approx 0.1926 \text{ K}$, $b \approx 5.031$, $\beta \approx 0.3276$, and $T_0 \approx 321 \text{ K}$. Equations (51) imply that, at the transition to the isotropic phase ($T = T_{\text{NI}}$), all the anisotropic features vanish and the Miesowicz viscosities η_1 and η_2 converge to a common value, η_{iso} . Likewise, γ_1 and γ_2 are predicted to vanish at $T = T_{\text{NI}}$.

ACKNOWLEDGMENT

It is a pleasure to thank Antonio Di Carlo and Paolo Biscari for many stimulating and helpful discussions.

-
- [1] P. de Gennes and J. Prost, *The Physics of Liquid Crystals*, 2nd ed. (Oxford University Press, Oxford, UK, 1995).
- [2] M. E. Mullen, B. Lüthi, and M. J. Stephen, *Phys. Rev. Lett.* **28**, 799 (1972).
- [3] K. Miyano and J. B. Ketterson, *Phys. Rev. A* **12**, 615 (1975).
- [4] C. Grammes, J. K. Krüger, K.-P. Bohn, J. Baller, C. Fischer, C. Schorr, D. Rogez, and P. Alnot, *Phys. Rev. E* **51**, 430 (1995).
- [5] J. K. Krüger, C. Grammes, R. Jiménez, J. Schreiber, K.-P. Bohn, J. Baller, C. Fischer, D. Rogez, C. Schorr, and P. Alnot, *Phys. Rev. E* **51**, 2115 (1995).
- [6] J. H. Kim, T. H. Kim, J.-H. Ko, and J.-H. Kim, *J. Korean Phys. Soc.* **61**, 862 (2012).
- [7] G. C. Wetsel, Jr., R. S. Speer, B. A. Lowry, and M. R. Woodard, *J. Appl. Phys.* **43**, 1495 (1972).
- [8] F. Jähnig, *Z. Phys.* **258**, 199 (1973).
- [9] D. Eden, C. W. Garland, and R. C. Williamson, *J. Chem. Phys.* **58**, 1861 (1973).
- [10] K. A. Kemp and S. V. Letcher, in *Liquid Crystals and Ordered Fluids*, edited by J. F. Johnson and R. S. Porter (Springer US, Boston, MA, 1974), Vol. 2, pp. 351–356.
- [11] S. E. Monroe, Jr., G. C. Wetsel, Jr., M. R. Woodard, and B. A. Lowry, *J. Chem. Phys.* **63**, 5139 (1975).
- [12] V. Blandin, A. Larionov, and S. Pasechnik, *Zh. Eksp. Teor. Fiz.* **83**, 2121 (1982) [*J. Exp. Theor. Phys.* **56**, 1230 (1982)].
- [13] P. Oswald, *Phys. Rev. E* **92**, 062508 (2015).
- [14] P. Kahl, P. Baroni, and L. Noirez, *Phys. Rev. E* **88**, 050501 (2013).
- [15] H. S. Sellers, T. Margulies, and W. H. Schwarz, *Mol. Cryst. Liq. Cryst.* **162B**, 185 (1988).
- [16] P. Biscari, A. DiCarlo, and S. S. Turzi, *Soft Matter* **10**, 8296 (2014).
- [17] S. S. Turzi, *Eur. J. Appl. Math.* **26**, 93 (2015).
- [18] P. Biscari, A. DiCarlo, and S. S. Turzi, *Phys. Rev. E* **93**, 052704 (2016).
- [19] A. E. Lord, Jr. and M. M. Labes, *Phys. Rev. Lett.* **25**, 570 (1970).
- [20] O. A. Kapustina, *Crystallogr. Rep.* **49**, 680 (2004).
- [21] E. N. Kozhevnikov, *Acoust. Phys.* **51**, 688 (2005).
- [22] O. A. Kapustina, *Acoust. Phys.* **54**, 778 (2008).
- [23] E. N. Kozhevnikov, *Acoust. Phys.* **56**, 24 (2010).
- [24] O. A. Kapustina, E. N. Kozhevnikov, and S. P. Chumakova, *Acoust. Phys.* **60**, 269 (2014).
- [25] J. V. Selinger, M. S. Spector, V. A. Greanya, B. T. Weslowski, D. K. Shenoy, and R. Shashidhar, *Phys. Rev. E* **66**, 051708 (2002).
- [26] V. A. Greanya, M. S. Spector, J. V. Selinger, B. T. Weslowski, and R. Shashidhar, *J. Appl. Phys.* **94**, 7571 (2003).
- [27] A. P. Malanoski, V. A. Greanya, B. T. Weslowski, M. S. Spector, J. V. Selinger, and R. Shashidhar, *Phys. Rev. E* **69**, 021705 (2004).
- [28] V. A. Greanya, A. P. Malanoski, B. T. Weslowski, M. S. Spector, and J. V. Selinger, *Liq. Cryst.* **32**, 933 (2005).
- [29] E. G. Virga, *Phys. Rev. E* **80**, 031705 (2009).
- [30] A. DiCarlo and S. Quiligotti, *Mech. Res. Commun.* **29**, 449 (2002).
- [31] K. R. Rajagopal and A. R. Srinivasa, *Z. Angew. Math. Phys.* **55**, 861 (2004).
- [32] P. Podio-Guidugli and E. G. Virga, *Proc. R. Soc. London A* **411**, 85 (1987).
- [33] The scalar product $\langle \cdot, \cdot \rangle$ is well defined when $a(\rho) > 0$ since the tensor $\Psi^{-1} \otimes \Psi^{-1}$ is then positive definite and symmetric.
- [34] O. Parodi, *J. Phys. (France)* **31**, 581 (1970).
- [35] F. Fedorov, *Theory of Elastic Waves in Crystals* (Plenum Press, New York, 1968).
- [36] R. B. Bird, R. C. Armstrong, and O. Hassager, *Dynamics of Polymeric Liquids, Vol. 1: Fluid Mechanics*, 2nd ed. (Wiley, New York, 1987).
- [37] G. De Matteis and E. G. Virga, *Phys. Rev. E* **83**, 011703 (2011).
- [38] H. Knepe, F. Schneider, and N. K. Sharma, *J. Chem. Phys.* **77**, 3203 (1982).
- [39] R. A. L. Jones, *Soft Condensed Matter, Oxford Master Series in Physics* (Oxford University Press, Oxford, UK, 2002).
- [40] P. Patrício, C. R. Leal, L. F. V. Pinto, A. Boto, and M. T. Cidade, *Liq. Cryst.* **39**, 25 (2012).
- [41] A. G. Chmielewski, *Mol. Cryst. Liq. Cryst.* **132**, 339 (1986).