



Cite this article: Hochegger H, Hégarat N, Pereira-Leal JB. 2013 Aurora at the pole and equator: overlapping functions of Aurora kinases in the mitotic spindle. *Open Biol* 3: 120185.
<http://dx.doi.org/10.1098/rsob.120185>

Received: 20 December 2012

Accepted: 21 February 2013

Subject Area:

cellular biology/genetics/molecular biology

Keywords:

Aurora kinases, microtubules, chromosome segregation, kinesin, Aurora evolution

Author for correspondence:

Helfrid Hochegger

email: hh65@sussex.ac.uk

Aurora at the pole and equator: overlapping functions of Aurora kinases in the mitotic spindle

Helfrid Hochegger¹, Nadia Hégarat¹ and Jose B. Pereira-Leal²

¹Genome Damage and Stability Centre, University of Sussex, Falmer, Brighton BN21AU, UK

²Instituto Gulbenkian de Ciência, Rua da Quinta Grande, 6, Apartado 14, Oeiras 2781-901, Portugal

1. Summary

The correct assembly and timely disassembly of the mitotic spindle is crucial for the propagation of the genome during cell division. Aurora kinases play a central role in orchestrating bipolar spindle establishment, chromosome alignment and segregation. In most eukaryotes, ranging from amoebas to humans, Aurora activity appears to be required both at the spindle pole and the kinetochore, and these activities are often split between two different Aurora paralogues, termed Aurora A and B. Polar and equatorial functions of Aurora kinases have generally been considered separately, with Aurora A being mostly involved in centrosome dynamics, whereas Aurora B coordinates kinetochore attachment and cytokinesis. However, double inactivation of both Aurora A and B results in a dramatic synergy that abolishes chromosome segregation. This suggests that these two activities jointly coordinate mitotic progression. Accordingly, recent evidence suggests that Aurora A and B work together in both spindle assembly in metaphase and disassembly in anaphase. Here, we provide an outlook on these shared functions of the Auroras, discuss the evolution of this family of mitotic kinases and speculate why Aurora kinase activity may be required at both ends of the spindle microtubules.

2. Introduction

Each time a cell divides, it risks losing or gaining chromosomes. The resulting cellular aneuploidy can be detrimental and is a prominent cause of cancer formation [1]. The main task during mitosis is to ensure that the replicated sister chromatids are segregated with ultimate accuracy among the daughter cells. This is, in principle, a mechanical problem of generating force to segregate the two sister chromatids of each chromosome and move them to the opposite ends of the cell division plane. The mitotic spindle (figure 1*a*) provides the platform for accurate alignment of the condensed chromosomes and constitutes the molecular machine that segregates the sister chromatids [8,9]. It is crucial that the segregation process is only initiated when each chromosome is aligned in the centre of the spindle and bioriented, so that the sister chromatids in each chromosome are connected to opposite spindle poles. A complex signalling network that involves various checkpoints ensures this accurate timing [10–12]. Mitotic kinases constitute a key element of this regulatory network. More than 1000 proteins display mitosis-specific phosphorylation [13,14], and a growing number of kinases are implicated in executing these signalling events. Among them, Aurora kinases play a prominent role as essential regulators of the mitotic spindle and have been attributed a wide range of functions in mitotic control [15,16].

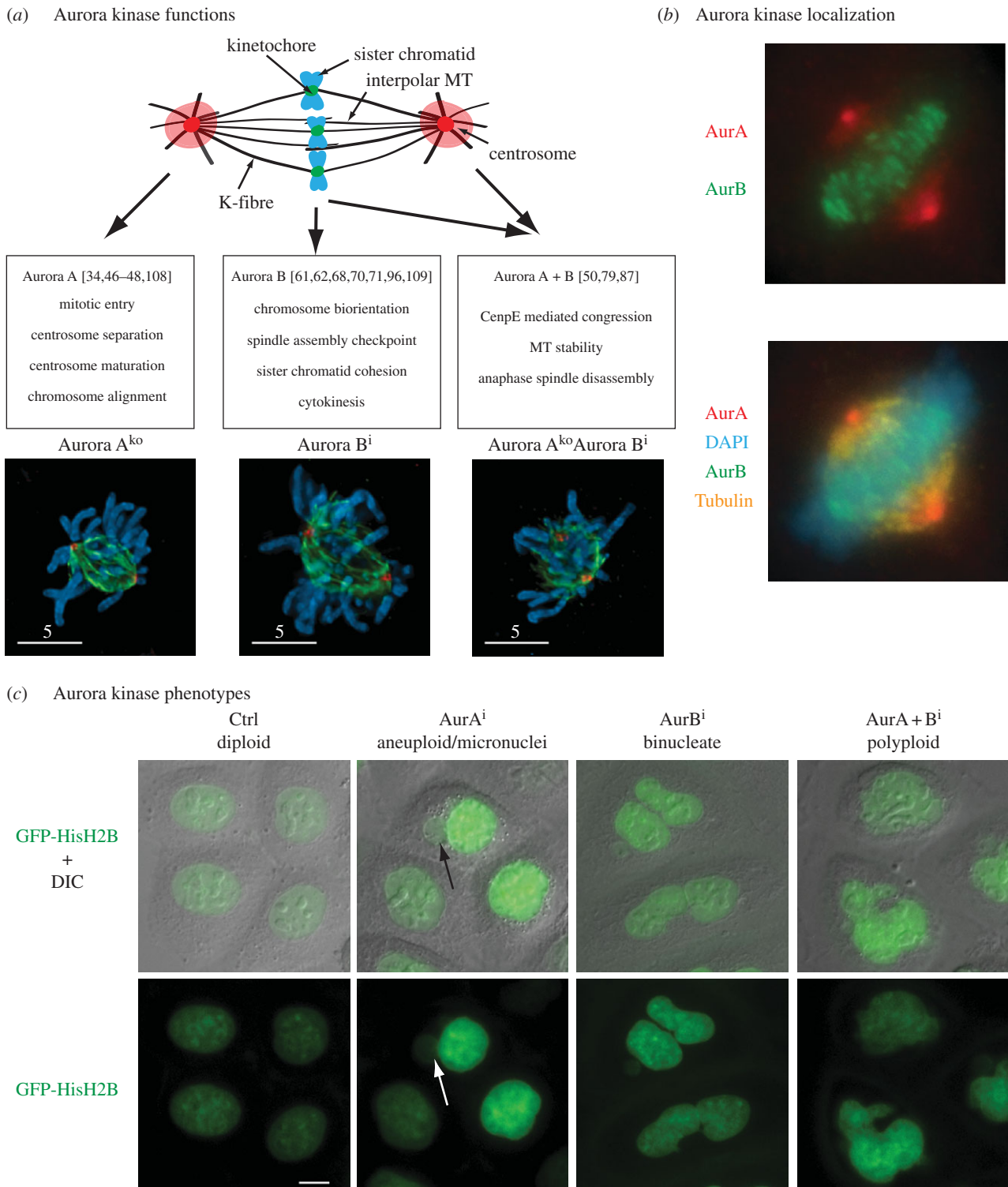


Figure 1. Specific and combined Aurora kinase functions. (a) Overview of functions of Aurora kinases in the mitotic spindle and images of cells lacking Aurora A, Aurora B and Aurora A + B activity [2]. (b) Centrosomal and centromeric localization of A and B-type Aurora in human *HeLa* cells. Immuno-fluorescent image of a formaldehyde fixed metaphase cell. (c) Nuclear phenotypes of *HeLa* cells expressing GFP-Histone H2B following 24 h incubation with Aurora A inhibitor (500 nM MLN8237), Aurora B inhibitor (60 nM AZD 1152) and Aurora A + B inhibitors (500 nM MLN8237 + 60 nM AZD1152). Aurora A inhibition causes micronuclei formation (see arrow) and aneuploidy [3,4], Aurora B inhibition results in a cytokinesis defect leading to binucleate cells [5,6], whereas inactivation of both Aurora A and B causes an abrogation in chromosome segregation and mitotic exit with a single tetraploid nucleus [2,7].

Glover and colleagues [17] discovered the first Aurora kinase in a screen for genes required to maintain the centrosome cycle in *Drosophila*. Mutant alleles in Aurora cause monopolar spindles [17]. A related budding yeast kinase, termed increased ploidy 1 (Ipl1) was later described to be required for chromosome segregation [18]. Orthologues of Aurora kinase were subsequently discovered in human cells [19,20] and in a variety of other model organisms [21–23].

It appears that in most unikonts Aurora kinase activity is required at both the spindle pole and the centromere. In higher eukaryotes, centrosome-associated Aurora kinases are now generally termed Aurora A, to distinguish them from the Ipl1-related Aurora B kinases that are a component of the chromosome passenger complex (CPC) [24]. A third mammalian Aurora paralogue, Aurora C [25], is functionally related to Aurora B [26,27] and thought to play a role in the

meiotic cell cycle, but does not seem to be essential for cell divisions in somatic cells [28–30].

The Auroras are serine/threonine kinases with a highly conserved C-terminal kinase domain (Aurora A and B share 70% identity in their catalytic domain), but are found in separate protein complexes that determine their divergent localization and function. These distinctive interactions are mediated by a highly divergent N-terminus. The similarities between the paralogues are highlighted by the fact that a single amino acid change can turn Aurora A in a functional B-type Aurora that can replace endogenous Aurora B function [31,32]. Aurora A activation requires autophosphorylation of the activation loop [33,34], which is facilitated by forming a complex with the microtubule (MT)-binding protein Tpx2 [35,36] and counteracted by protein phosphatase 6 [37]. In addition, a variety of other proteins, such as Ajuba, Bora and Pak1 bind to and activate Aurora A at the centrosome [38–40]. Similar to Aurora A, activation of Aurora B requires autophosphorylation of the T-loop, which is, in this case, facilitated by the other members of the CPC, which are in turn also phosphorylated by Aurora B [41–45]. Inactivation of Aurora B is mediated by PP1 and PP2A phosphatases [46,47].

Thus, Aurora A and B interact with different sets of proteins, are differentially localized at the poles and the centromeres of the spindle, and are activated by separate mechanisms. These observations have led to the common notion that Aurora A and B function in unrelated and distinct aspects of mitotic control. Alternatively, these kinases could be required to work in the same signalling pathways from their respective residence at the opposite ends of the spindle MTs. Indeed, recent evidence suggests that Aurora A and B cooperate closely in regulating chromosome congression and alignment, metaphase spindle stability and anaphase MT dynamics.

This review aims to summarize the current knowledge on the concerted action of centrosomal and centromeric Aurora activity. Detailed overviews of individual Aurora A and B structure, functions, interactions and activation mechanisms have been given in excellent recent reviews [15,16,48,49]. Below, we will give a brief summary on the specific roles of these kinases, and then review recent evidence on functions and substrates shared between A and B-type Aurora kinases in more detail. Figure 1*a,b* gives a general overview of functions and localization of Aurora kinases.

3. Aurora A

The hallmark phenotype of Aurora A mutations in flies is a centrosome separation defect resulting in monopolar spindles [17]. This has led to the common notion that Aurora A is a major driver of centrosome separation. However, depletion or inactivation of Aurora A in mammalian cells only results in a modest increase in monopolar spindles [3,50], although other studies report more severe defects in centrosome separation after Aurora A inactivation using antibodies and in mouse embryonic fibroblast knockouts [51,52]. We recently reported that a conditional deletion of Aurora A in chicken DT40 cells causes chromosome alignment defects as well as a reduction in spindle MTs, but does not interfere with spindle bipolarity [2]. These differences between model systems could be reconciled by the recent descriptions of separate Plk1- and Cdk1-dependent control pathways for centrosome separation [53–55]. Aurora A may act together with Plk1, but

seems to be dispensable for Cdk1-driven centrosome separation [2]. The impact of these pathways could vary among cell types and organisms, explaining the divergent extent of monopolar spindle phenotypes caused by Aurora A inactivation in different systems.

Another major mitotic defect in vertebrate cells lacking Aurora A activity is chromosome misalignment (figure 1*a*), resulting in defective chromosome segregation and aneuploidy. It is not self-evident how a centrosomal kinase coordinates the congression and segregation of chromosomes at the metaphase plate. The answer to this problem probably lies in functions of Aurora A in the control of spindle dynamics. This could be caused by defects in centrosome maturation leading to diminished mitotic MT polymerization. Aurora A has been shown to contribute to centrosome maturation in a variety of systems [38,56,57], and has been linked to this process via targets such as centrosomin and NDEL1 [58,59]. Aurora A also acts on other aspects of MT dynamics, and has been implicated in regulating a variety of MT-associated proteins that are involved in MT stabilization, destabilization and chromosome movement [50,60–63]. Most likely, the spindle defects and chromosome misalignment in Aurora A defective cells are the result of a complex interplay of various substrates. Functional relevance for most of these potential phosphorylation events is still lacking, and we are far from understanding the crosstalk between various Aurora A targets.

4. Aurora B

Aurora B is partnered with Incenp, Survivin and Borealin in the CPC, named after its transient localization to the chromosomes and inner centromere from pro- to metaphase, the central spindle in anaphase and the cleavage furrow during cytokinesis [24,64]. A critical function of Aurora B and the CPC is the control of chromosome biorientation [65]. The kinase destabilizes incorrectly attached MT–kinetochore connections via the MT depolymerase mitotic centromere-associated kinesin (MCAK) [66,67], and by targeting kinetochore components in the KNL1/Mis12/Ndc80 network and the Ska complex [68,69]. These phosphorylations are removed by PP1, once tension is established and the outer kinetochore is separated from the centromeric Aurora B [70–72]. By generating unattached kinetochores during error correction, Aurora B intrinsically impacts on the spindle assembly checkpoint (SAC), but a more direct involvement of Aurora B in the SAC has also been proposed [73]. Thus, Aurora B inhibition does affect SAC maintenance in response to loss of attachment [5,6] or when the SAC is caused by constitutive tethering of Mad1 to the kinetochore [74]. This could be explained by a possible role for Aurora B to recruit SAC components such as Mad2 and BubR1 to the kinetochore [6]. Furthermore, Aurora B plays a role in sister chromatid cohesion [75,76], spindle disassembly [77] and cytokinesis [78], and has meiosis-specific functions in regulating the synaptonemal complex [79]. These various roles reflect the differential localization of Aurora B at the chromosome arms, centromeres, central spindle and midbody during mitotic progression [80]. Cell division in the absence of Aurora B activity results in chromosome missegregation. However, the major consequence of Aurora B inhibition in mammalian cells is a cytokinesis failure resulting in binucleate daughter cells [64,81–83]. This suggests that Aurora B is not strictly essential for chromosome

segregation and that the dominant Aurora B phenotype lies with its telophase functions in controlling abscission. As for Aurora A, the major task ahead in studying Aurora B lies in cataloguing and characterizing the functions of Aurora B-dependent phosphorylation of its various substrates.

5. Overlapping roles of centromeric and centrosomal aurora kinases

In summary, the major consequence of Aurora A inactivation in mammalian cells appears to be spindle pole separation defects, chromosome alignment defects and aneuploidy. Aurora B inhibition results in chromosome missegregation, cytokinesis defects and binucleated cells. Does this mean that these kinases work separately in unrelated compartments of mitotic control, or are there areas where these kinases work together, or have overlapping functions? What is the actual phenotypic consequence of combined inactivation of Aurora A and B? If these kinases were to have entirely non-related functions, one would expect a combination of chromosome segregation defects and the dominant Aurora B cytokinesis failure giving rise to binucleated cells. This would imply that defects in Aurora A and B signalling are completely separate without impact on each other. Given that these kinases play an important role in chromosome alignment and segregation, this is unlikely. Accordingly, we have recently demonstrated that inactivation of both Aurora A and B in chicken DT40 cells causes a much more severe defect in sister chromatid segregation, resulting in mitotic exit with a single tetraploid nucleus [2]. The same appears to be true if Aurora A and B are concomitantly inactivated in human cells [7] (figure 1c). This segregation failure could be caused by mitotic slippage owing to a SAC defect in response to Aurora B inactivation. This is, however, unlikely because SAC inactivation in Aurora A defective cells by other means (Mps1 inhibition, Mad2 depletion) does not interfere with chromosome segregation [2].

A complete failure in chromosome segregation could be the consequence of persistent sister chromatid cohesion, defective force generation in the mitotic spindle or a synergistic failure in chromosome congression. Aurora B is involved in the control of sister chromatid cohesion, but does not play an essential role in removing cohesin from the centromeres prior to anaphase [75,76]. To our knowledge, there is no evidence that Aurora A plays a role in cohesion. It does not act in the vicinity of the metaphase chromosomes and is unlikely to further contribute to the removal of cohesins during anaphase. Thus, it is more likely that failure of sister chromatid segregation in the absence of Aurora A and B kinase activity is an additive effect in the control of chromosome alignment, or MT dynamics that results in a failure to pull the sister chromatids apart.

How could A- and B-type Aurora kinases act together in the control of chromosome segregation? There could be cases of substrate redundancy, if Aurora A and B share a common substrate that both can phosphorylate. Alternatively, the observed additive effect could be the result of pathway redundancy, where separate centrosomal and centromeric Aurora substrates work in parallel at their respective ends. Proteomic data are available to compare specific and overlapping substrates of Aurora kinases [84]. The majority of Aurora substrates in this study appeared to be highly specific to either Aurora A or B, matching also in their respective localization to the centrosome

and centromere. However, a number of proteins were clearly phosphorylated by both kinases. These double targets were mostly localized on the mitotic spindle, where they could meet either kinase from the centrosomal or centromeric ends. Recent studies have started to shed light on common substrates and functions of Aurora A and B kinases, and point to a complex interplay between the centromeric and centrosomal Aurora activity in coordinating mitotic spindle function. An overview of shared Aurora A and B targets is given in table 1.

5.1. Coordinated action of Aurora A and B in the control of CenpE

One prominent mitotic player that is a target of both Aurora A and B is the plus-end-directed motor protein CenpE [85]. This kinesin is required for congression of chromosomes from the spindle poles to the equator [86,87]. MTs emanating from the spindle poles often capture chromosomes by lateral attachment of the kinetochore to the MT surface [88]. These captured chromosomes are transported towards the spindle pole by the minus-end-directed motor protein dynein [89–91]. In this way, kinetochores are exposed to an MT-dense area in vicinity of the spindle pole, increasing the chance of efficient MT attachment. CenpE is essential for transporting these polar chromosomes to the spindle equator, and removal of CenpE does result in a chromosome alignment failure, with chromosomes remaining at the spindle poles [92–94]. Given its function as a transporter of chromosomes from the pole to the equator, it makes sense that this protein is exposed to both Aurora A at the centrosome and Aurora B at the kinetochore. In an elegant study, Kim *et al.* [85] mapped an essential Aurora phosphorylation site in CenpE at Thr422, downstream of the coiled-coil neck that follows the kinesin motor domain. This site is indeed targeted by both Aurora A and B, and is essential for efficient chromosome congression. The authors demonstrated that Thr422 phosphorylation decreases the affinity of CenpE to MTs and reduces the motor's processivity. The site is also located within a docking motive for PP1 and opposes PP1 binding. This suggests a model whereby Aurora A phosphorylates CenpE on laterally attached chromosomes that have been transported to the spindle pole by dynein. The destabilizing effect of the Thr422 phosphorylation would inhibit tethering of CenpE to individual astral MTs, but would have little consequence for tethering to K-fibres, where it is more likely to rapidly re-bind a neighbouring MT, because of the high density of parallel MT bundles. This 'kinetic proofreading mechanism' (figure 2a) would thus ensure that CenpE transports the polar chromosomes towards the spindle equator along a preformed K-fibre of an already bioriented chromosome. Once CenpE has lost contact with Aurora A, PP1 removes the Thr422 phosphorylation and binds to CenpE to allow transport towards the midzone and enable end-on attachment by the kinetochore proteins Ndc80 and KNL1. One problem with this model is that it does not explain why both Aurora A and B are needed to phosphorylate CenpE at Thr422. The localization of Aurora A at the spindle poles brings it close to CenpE, which is loaded with laterally attached chromosomes. However, Aurora B is already in close proximity to CenpE, being enriched at the centromere. Aurora B-dependent Thr422 phosphorylation may allow reduction of CenpE processivity on incorrectly attached kinetochores in the metaphase plate, but this does not explain why Aurora A is needed to phosphorylate CenpE at laterally attached kinetochores at the poles. Possibly, an

Table 1. Overlapping substrates of Aurora A and Aurora B [84]. *Italic*, different sites phosphorylated by either Aurora A (MLN1 + MLN5) or Aurora B (MLN5 + AZDZM). **Bold**, same sites phosphorylated by Aurora A and B (inhibited by MNL1 and AZDZM). Remaining names, sites phosphorylated by either Aurora A or Aurora B (inhibition by MLN5).

categories	gene names
cytoskeleton-associated processes	
spindle organization/orientation	HAUS6, HAUS8, KIF23, SPAG5, <i>GPSM1</i> , <i>RANBP2</i> , TPX2, PARD3 ^a , TCOF1, KIF4A, DLGAP5, NUMA1
centrosome cycle	NPM1, CC2D1A, OFD1
attachment of spindle microtubules to kinetochore	CASC5, SPAG5, CENPF, <i>CENPE</i> [92]
microtubule polymerization or depolymerization	ARHGEF2, SLAIN2, MAPRE3 ^a , KIF18B, CEP170, KIF2A [63,138], <i>KIF2C</i> [95]
actin filament organization/ actin-associated proteins	ARHGEF2, LATS1, ZYX , PDLIM5, STK10, SSFA2, BAG3, ARHGEF18, DIAPH3, MYO9B, ABLIM3, PALLD, PLA2G4A, CAMSAP1
other microtubule-based processes	MACF1 , SPAST , GPHN , NEK4, MAP7, ATL1, CLIP2
other microtubule-associated proteins with unknown functions	KLC1, MAP4, ASPM, <i>MAP1B</i> , MAP7D3, KLC2, MAP7D1, MAP7D2
present at centrosome but uncharacterized proteins/unknown functions	SYTL4, PRKAR2A , CEP170, WDR62
other cytoskeleton proteins/associated processes	KRT17 , LMNA, LMNB1, SYNC, PLEC
DNA-associated processes	
other kinetochore/centromere proteins	CENPV , CENPC1, DSN1
chromosome condensation/sister chromatin cohesion	ACIN1, CDCA5, NCAPD2, NCAPG, NCAPH, TOP2A, GSG2, PDS5B, KIF4A
nucleosome organization	BAZ1B, HJURP, NPM1, <i>HIST1H3A</i> ^a
response to DNA damage stimulus	ATR, BAZ1B, CDCA5, NPM1, RASSF1 ^a , SETMAR, TERF2IP, TP53 ^a , TRIP12, UBR5
regulation of gene expression	ARHGEF2, CENPF, DAXX, MAP3K2, PSIP1, RBM14, RBMX, RNF25, RTF1, PPP1R8 , SUPT6H , RBM17 , LMO7 , TAF15, ZFH3, GTF2, RREB1, KDM3B, RDBP
present on chromosomes with other functions	CDCA2, TMPO, BAZ1A
present on chromosomes with unknown functions	MKI67 , MKI67IP
other processes	
G2/M transition of mitotic cell cycle	CENPF, LATS1, NES, CDC25B, MELK
regulation of cytokinesis	CDC25B, CENPV , KIF23, PRPF40A, SPAST , ATXN10 , KIF4A, DIAPH3
others functions	TBC1D4, ARFGAP3, RCHY1, WWC1 ^a , RTKN , GRWD1 , EIF4ENIF1, RFC1, ANAPC7, AHNAK, CAD, NT5C2, PFKFB2, CDK16, PI4KB, AP4B1, NUP50, SIK1, DENND4C
uncharacterized proteins	LUZP1 , NUCKS1, KCMF1, PDXDC1, CCDC86, TBC1D12, BOD1L, ZC3H11A, CDK17, MINA, MCTP2, CDK18, RPRD2, LIMCH1, C17orf59

^aFrom phosphositeplus.org [139].

increase in Aurora kinase activity is needed at the poles to overcome PP1 activity and to displace the phosphatase from CenPE. It is also not clear whether CenPE is the only target through which Aurora A controls chromosome alignment, and to what extent Aurora A and B actually synergize in chromosome congression and biorientation. Double inactivation of Aurora A and B does not result in an obvious increase in alignment defects (figure 1*b*), arguing against a strong synergy. However, a more careful analysis of chromosome congression and biorientation in single and double Aurora A- and B-inactivated cells will be necessary to address this question.

5.2. Shared functions of Aurora kinases in the inhibition of microtubule depolymerases

Another function shared between Aurora A and B in the control of mitotic spindle dynamics is the inhibition of MT

depolymerization in metaphase spindles. Kif18B and MCAK are two other kinesins that appear to be targets of Aurora A and B in this pathway [95]. The starting point of this discovery was an analysis of spindle morphology after Aurora A, Aurora B and Aurora A + B inactivation. Joint inactivation of both Auroras led to a dramatic loss of MTs. This could be reversed by co-depletion of the MT depolymerases Kif18B and MCAK, suggesting that these two enzymes are deregulated in the absence of Aurora kinase activity. The authors went on to show that Kif18B and MCAK directly interact at the plus end of MTs, guided by the MT plus-end-binding protein EB1. According to their model, Kif18B is required to transport MCAK along the MTs towards the very tip of the MT end (figure 2*b*). This is where MCAK acts as a depolymerase [98], although Kif18B may itself also contribute to MT depolymerization [99]. How Aurora kinases suppress MT depolymerization activity of these two enzymes remains unclear. Kif18B is a substrate for both Aurora A and B

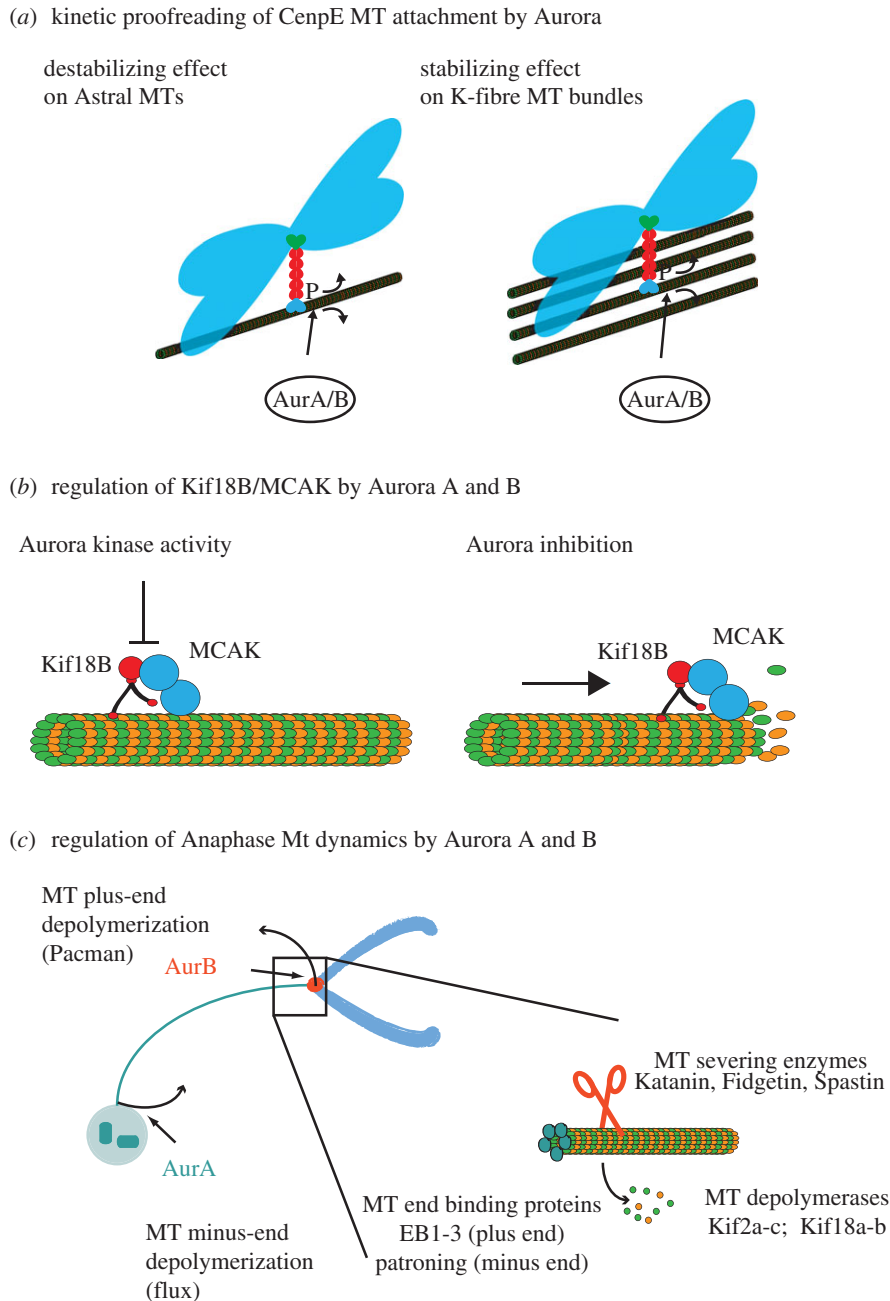


Figure 2. Aurora A and B kinase synergies. (a) CenpE phosphorylation by Aurora kinases results in kinetic proofreading (model adapted from Kim *et al.* [92]). Aurora kinase phosphorylation destabilizes CenpE binding to MTs. The protein is more likely to re-attach to a neighbouring MT in the dense K-fibre bundles than on single astral MTs. (b) Control of Kif18b/MCAK interaction by Aurora- kinases (model adapted from Tanenbaum *et al.* [95]). The plus-ended motor Kif18b transports MCAK to the MT tip, where it depolymerizes the tubulin polymers. Aurora kinases jointly negatively regulate this interaction by an unknown mechanism. (c) Aurora controlled MT depolymerization in anaphase (model adapted from Hegarat *et al.* [2]). In metaphase, the kinetochores are attached to kinetochore MT fibres (K-fibres) that reach to the spindle poles. Minus-end depolymerization causes a constant flux of tubulin towards the spindle poles that is counteracted by plus-end MT polymerization at the kinetochore to achieve constant spindle length. In anaphase K-fibres are rapidly depolymerized at both plus and minus ends. This MT depolymerization releases energy that is used to pull the kinetochores along the shrinking K-fibre. Possible targets in this pathway are proteins that regulate MT stability. Among these, the end-binding proteins have been shown to be Ipl1 substrates in yeast, and this phosphorylation is linked to spindle disassembly [96]. MT-severing enzymes and MT depolymerases have also been shown to be targeted by Aurora kinases, but these phosphorylations are thought to negatively regulate their enzymatic activities [66,67,97].

in vitro, but mutation of the identified phosphorylation sites did not have any effect on Kif18B localization and activity [95]. MCAK regulation by Aurora kinases is well documented, but its impact on MCAK function is complex [100]. There is a cluster of Aurora B kinase sites in the MCAK neck domain. Phosphorylation of S192 (S196 in *Xenopus*) is thought to reduce the affinity of the protein to MTs and does inhibit its MT depolymerization activity [66,67,101]. Moreover, N-terminal Aurora B phosphorylation sites in MCAK are thought to regulate its affinity to the centromere, but these

can have both negative and positive impacts on centromere binding, suggesting a complex regulatory interplay between MCAK and Aurora B [66,67,101,102]. In fact, Aurora B and MCAK are supposed to work together in the correction of attachment errors by destabilizing synthetic attachments. Thus, differential effects of individual phosphorylation sites may allow specific modulation of MCAK activity by Aurora B with both negative and positive impacts, depending on the circumstance. Aurora A has also been reported to phosphorylate MCAK on S196, thereby further contributing to inhibition

of depolymerase activity [62]. There is another Aurora site in the C-terminus that is required for localization of MCAK to the spindle poles and for Ran-dependent bipolar spindle formation in centrosomeless *Xenopus* egg extracts [62]. Moreover, Aurora A appears to be required for MCAK localization to centrosomes in mammalian cells [50]. Thus, Aurora A and B act as both positive and negative regulators of MCAK in a complex interplay of various phosphorylation sites.

Based on these data, we cannot as yet build a clear model to explain Tanenbaum *et al.*'s [95] observation that double inhibition of Aurora A and B causes a dramatic loss of spindle MTs owing to unchecked activation of MCAK and Kif18B. We need to determine which of these phosphorylation sites in Kif18B and/or MCAK are responsible for this effect, and how these sites contribute to MCAK/Kif18B complex formation and inhibition of MT depolymerization activity.

5.3. Shared functions of Aurora A and B in controlling anaphase microtubule depolymerization

Redundancy in CenpE and MCAK/Kif18B phosphorylation could be sufficient to explain the specific failure in chromosome segregation in cells lacking Aurora A and B. Alternatively, Aurora A and B could also collaborate in other aspects of mitotic MT dynamics. When studying Aurora function in DT40 cells, we discovered a synergistic effect of Aurora A and B inactivation in anaphase MT depolymerization resulting in a persistence of long spindle MTs following Cdk inactivation [2]. This was a truly synergistic effect and did not occur in cells lacking either Aurora A or B activity, but only after inactivation of both kinases. Rapid depolymerization of K-fibre MTs is thought to be a major contributor to force generation in spindle in anaphase that is required to pull the sister chromatids apart [9,103]. MT depolymerization can occur at both the MT plus and minus ends (figure 2c). Minus-end depolymerization causes the so-called flux movement of tubulin subunits along kinetochore fibres towards the spindle pole [104,105]. MT depolymerization at the plus end results in a release of energy from MT bending at the depolymerizing tip that could drag along the attached kinetochore [106]. The actual impact of MT Flux and/or Pacman on chromatid segregation is still under debate, and may vary among cell lines and organisms [105]. The respective localization of Aurora A and B at the centrosome (MT minus end) and kinetochore (MT plus end) points to a role for these kinases in plus- and minus-end MT depolymerization. The synergy in cells lacking both Aurora A and B could suggest that either minus- or plus-end depolymerization is sufficient to drive spindle disassembly and chromosome segregation in DT40 cells, and only inactivation of both pathways results in effective stabilization of anaphase MTs and failure in chromosome segregation. These hypotheses need to be addressed by measuring plus- and minus-end depolymerization directly in cells lacking Aurora A, B or both kinases.

The precise mechanisms of this regulatory pathway remain to be determined (figure 2c). One problem with this hypothesis is that Aurora B kinase as part of the CPC actually leaves the centromere and remains in the spindle midzone as the kinetochores are travelling with the shrinking K-fibres. The critical Aurora B-dependent phosphorylation event must therefore already happen in metaphase before the K-fibre MTs depolymerize. The real trigger of anaphase spindle disassembly is more likely to be a drop in Cdk activity, anaphase-promoting

complex/cyclosome (APC/C)-mediated proteolysis and the activation of mitotic exit phosphatases. The impact of these factors on Aurora functions in MT dynamics remains to be determined. It also appears paradoxical that Aurora kinases should cooperate to stabilize the metaphase spindle and then be required for MT depolymerization in anaphase. A dual role of Aurora kinases as enhancers and suppressors of MT depolymerization already becomes apparent in the regulation of the MT depolymerase MCAK. Aurora kinase-dependent phosphorylation has both positive and negative effects on MCAK by localizing it to the right place while reducing its activity. The balance of this regulation may be changed in anaphase by the specific activation of phosphatases that remove the inhibitory phosphorylation, whereas the activating sites remain untouched. MCAK itself may, in fact, not be involved in anaphase K-fibre depolymerization. This function has been attributed to other members of the kinesin 13 family, namely Kif2a and Kif2b [107,108]. Aurora A appears to inhibit the MT depolymerase activity of Kif2a and also suppresses its binding to MTs, but not the spindle poles [63]. Regulation of Kif2b by Aurora kinases has, to our knowledge, not been reported. MT depolymerases are not the only conceivable targets of Aurora kinase to trigger anaphase MT depolymerization. MTs are stabilized by end-binding proteins, and in yeast, Ipl1 triggers spindle disassembly by phosphorylating Bim1, a member of the plus-end-binding proteins [77,98,109]. A minus-end-binding protein, patronin, has been recently discovered in *Drosophila* [110], but its mammalian homologues and its regulation by mitotic kinases remain unknown. A third class of proteins that play a role in anaphase MT dynamics are the MT-severing enzymes, including Katanin, Spastin and Fidgetin [111]. Studies in *Drosophila* have implicated these enzymes in triggering both plus- and minus-end destabilization of anaphase K-fibres [112]. Katanin appears to be negatively regulated by Aurora B in *X. laevis*, and this phosphorylation contributes to spindle size control [97]. A positive regulation of MT-severing enzymes by Aurora kinases has so far not been observed. Overall the changes in MT dynamics between metaphase and anaphase will require intensive investigation. These are likely to consist of a complex interplay of mitotic kinases to maintain positive regulatory phosphorylation. Moreover, local activation of specific phosphatases is also likely to play an important role to remove inhibitory phosphorylation sites that are required to maintain the steady state of metaphase MTs. Aurora kinases contribute to these phosphorylation events from both the minus and plus ends of the spindle MTs and coordinate the intricate regulatory network that controls mitotic spindle function.

6. Evolution of the Aurora kinase family

One possible way to learn about the functional split of Aurora kinases at the spindle pole and equator lies in studying the evolution of this kinase family. When considering Aurora evolution an immediate question arises: which form of Aurora constitutes the ancestral form? The fact that fungi only contain a single predominantly centromeric Aurora could suggest that this is the original orthologue, while Aurora A could have evolved later, in parallel with changes in the spindle pole structure and the occurrence of the centrosome. Alternatively, yeast could have lost the polar form of Aurora. However, even invertebrate and vertebrate Aurora kinases carry too little phylogenetic signal to conclude their

multiple independent taxon-specific duplications giving rise to the extant constellation of Auroras, reaching three and four paralogues in some organisms. A phylogenetic analysis (figure 3*d*) further supports the notion that independent duplications have occurred in several branches, for example giving rise to Aurora C in mammals, or the multiple plant and moss Auroras. However, Aurora kinase sequences proved very resistant to phylogenetic analysis, a fact already noted by others [113], which makes the assignment of orthology relationships based on this method impossible over even very short evolutionary distances. This means that while the vertebrate signal is still clear and the monophyly of each group of Auroras is well established, this relationship is lost when invertebrates such as *Caenorhabditis elegans* or *Drosophila melanogaster* are included in the analysis (figure 3*d*). This method does not allow us to establish that Aurora in the fruitfly is the orthologue of the mammalian Aurora A, nor the nature of the evolutionary relationship between the well-studied animal kinases and their counterparts in other groups, including fungi. Thus, it is unclear which one may have been the ancestral Aurora function. It is also noteworthy that Aurora kinases have gained lineage-specific functions. Examples are their role in defining flagellar length in the *Chlamydomonas reinhardtii* [133], and the coupling of cytokinesis with kinetoplastid and nuclear division in *Trypanosoma brucei* [134–136]. These functional specializations are also reflected by the dramatic variation in the domain architectures of Auroras. For example, *C. reinhardtii* possesses a C-terminal extension, containing a MT-binding domain and a PEST motif [137].

Considering the sparse functional evidence currently available in non-model organisms (figure 3*c*), it appears that single paralogue Aurora kinases are either bifunctional or have solely an equatorial localization. This suggests that the equatorial B-type Aurora constitutes the ancestral form. This speculation is further supported by the fact that the structures at the poles of the spindle show considerable variation among different species, whereas the kinetochore is a common feature among eukaryotic chromosomes (figure 3*d*). In animals the spindle poles are associated with the centrosome and the Aurora A subfamily appears intimately linked to it. Accordingly, most organisms that have ninefold symmetrical centrioles do have both a polar and an equatorial Aurora, whereas species with centriole-less spindle pole bodies, such as yeast, generally have a single Aurora orthologue. One could thus hypothesize that the A-type Aurora kinase family coevolved with the centrosome. However, this is unlikely, because some organisms that contain centriole-less spindle pole bodies (such as *Dictyostelium* and

Plasmodium) have a polar Aurora kinase. It will be important to analyse the Aurora kinase subcellular localization in species that contain centrosomes but only have a single Aurora kinase and in species that have centriole-less spindle pole bodies other than yeast. By comparing MT dynamics and chromosome segregation mechanism in organisms with and without polar Aurora activity, we may be able to determine why the polar version of Aurora kinase has evolved.

7. Conclusions and outlook

This review has emphasized a view on Aurora kinases focusing on concerted functions of the polar and equatorial forms of this kinase family. Even though the individual roles for A- and B-type Auroras are well studied, their combined functions in mitotic progression will need to be further elucidated. The molecular targets that lie beneath the synergistic effects on sister chromatid segregation and anaphase K-fibre depolymerization remain to be understood, and the list of overlapping substrates needs to be analysed for further evidence of functional redundancy. From an evolutionary perspective, a fascinating picture of a highly dynamic Aurora kinase family emerges. If equatorial B-type Aurora constitutes the ancestral form and polar Aurora A-type kinases have indeed evolved in parallel in different species both in the presence and absence of centrosomes, we really need to know what constitutes the selection pressure for this functional split. It will also be necessary to address why A-type Auroras are so divergent among relatively closely related phyla such as arthropods and vertebrates. If these kinases have indeed evolved separately, one could conclude that the evolutionary requirement for a separate polar Aurora has occurred relatively recently. Studying the conservation of overlapping and specific functions of Aurora A and B in different species will help to answer these questions. Given that large investments have been made to develop Aurora kinase inhibitors as cancer therapeutics, these questions gain an immediate urgency. The outcome of inhibiting Aurora A and B individually, or in combination on cellular ploidy, is clearly very different, and it will be important to determine how these different states of ploidy affect tumours of varying genetic make-up. It is conceivable that these differential consequences of specific inhibitors against each Aurora kinase, as well as pan-Aurora inhibitors, could be exploited separately in different cancer types, and could also provide potent synergies with other cancer drugs.

References

1. Kops GJ, Weaver BA, Cleveland DW. 2005 On the road to cancer: aneuploidy and the mitotic checkpoint. *Nat. Rev. Cancer* **5**, 773–785. (doi:10.1038/nrc1714)
2. Hegarat N, Smith E, Nayak G, Takeda S, Evers PA, Hochegger H. 2011 Aurora A and Aurora B jointly coordinate chromosome segregation and anaphase microtubule dynamics. *J. Cell Biol.* **195**, 1103–1113. (doi:10.1083/jcb.201105058)
3. Hoar K, Chakravarty A, Rabino C, Wysong D, Bowman D, Roy N, Ecsedy JA. 2007 MLN8054, a small-molecule inhibitor of Aurora A, causes spindle pole and chromosome congression defects leading to aneuploidy. *Mol. Cell Biol.* **27**, 4513–4525. (doi:10.1128/MCB.02364-06)
4. Scutt PJ, Chu MLH, Sloane DA, Cherry M, Bignell CR, Williams DH, Evers PA. 2009 Discovery and exploitation of inhibitor-resistant aurora and polo kinase mutants for the analysis of mitotic networks. *J. Biol. Chem.* **284**, 15 880–15 893. (doi:10.1074/jbc.M109.005694)
5. Hauf S *et al.* 2003 The small molecule Hesperadin reveals a role for Aurora B in correcting kinetochore-microtubule attachment and in maintaining the spindle assembly checkpoint. *J. Cell Biol.* **161**, 281–294. (doi:10.1083/jcb.200208092)
6. Ditchfield C, Johnson VL, Tighe A, Ellston R, Haworth C, Johnson T, Mortlock A, Keen N, Taylor SS. 2003 Aurora B couples chromosome alignment

- with anaphase by targeting BubR1, Mad2, and CenpE to kinetochores. *J. Cell Biol.* **161**, 267–280. (doi:10.1083/jcb.200208091)
7. Tyler RK, Shpiro N, Marquez R, Evers PA. 2007 VX-680 inhibits Aurora A and Aurora B kinase activity in human cells. *Cell Cycle* **6**, 2846–2854. (doi:10.4161/cc.6.22.4940)
 8. Rieder CL. 2011 Mitosis in vertebrates: the G2/M and M/A transitions and their associated checkpoints. *Chromosome Res.* **19**, 291–306. (doi:10.1007/s10577-010-9178-z)
 9. Maiato H, Lince-Faria M. 2010 The perpetual movements of anaphase. *Cell Mol. Life Sci.* **67**, 2251–2269. (doi:10.1007/s00018-010-0327-5)
 10. Mikhailov A, Shinohara M, Rieder CL. 2005 The p38-mediated stress-activated checkpoint: a rapid response system for delaying progression through antephasis and entry into mitosis. *Cell Cycle* **4**, 57–62. (doi:10.4161/cc.4.1.1357)
 11. Musacchio A, Salmon ED. 2007 The spindle-assembly checkpoint in space and time. *Nat. Rev. Mol. Cell Biol.* **8**, 379–393. (doi:10.1038/nrm2163)
 12. Sullivan M, Morgan DO. 2007 Finishing mitosis, one step at a time. *Nat. Rev. Mol. Cell Biol.* **8**, 894–903. (doi:10.1038/nrm2276)
 13. Dephoure N, Zhou C, Villen J, Beausoleil SA, Bakalarski CE, Elledge SJ, Gygi SP. 2008 A quantitative atlas of mitotic phosphorylation. *Proc. Natl Acad. Sci USA* **105**, 10 762–10 767. (doi:10.1073/pnas.0805139105)
 14. Olsen JV *et al.* 2010 Quantitative phosphoproteomics reveals widespread full phosphorylation site occupancy during mitosis. *Sci. Signal.* **3**, ra3. (doi:10.1126/scisignal.2000475)
 15. Lens SM, Voest EE, Medema RH. 2010 Shared and separate functions of polo-like kinases and aurora kinases in cancer. *Nat. Rev. Cancer* **10**, 825–841. (doi:10.1038/nrc2964)
 16. Vader G, Lens SM. 2008 The Aurora kinase family in cell division and cancer. *Biochim. Biophys. Acta* **1786**, 60–72.
 17. Glover DM, Leibowitz MH, McLean DA, Parry H. 1995 Mutations in aurora prevent centrosome separation leading to the formation of monopolar spindles. *Cell* **81**, 95–105. (doi:10.1016/0092-8674(95)90374-7)
 18. Francisco L, Wang W, Chan CS. 1994 Type 1 protein phosphatase acts in opposition to Ipl1 protein kinase in regulating yeast chromosome segregation. *Mol. Cell Biol.* **14**, 4731–4740.
 19. Kimura M, Kotani S, Hattori T, Sumi N, Yoshioka T, Todokoro K, Okano Y. 1997 Cell cycle-dependent expression and spindle pole localization of a novel human protein kinase, Aik, related to Aurora of *Drosophila* and yeast Ipl1. *J. Biol. Chem.* **272**, 13 766–13 771. (doi:10.1074/jbc.272.21.13766)
 20. Kimura M, Matsuda Y, Yoshioka T, Sumi N, Okano Y. 1998 Identification and characterization of STK12/Aik2: a human gene related to aurora of *Drosophila* and yeast IPL1. *Cytogenet. Cell Genet.* **82**, 147–152. (doi:10.1159/000015089)
 21. Schumacher JM, Golden A, Donovan PJ. 1998 AIR-2: an Aurora/Ipl1-related protein kinase associated with chromosomes and midbody microtubules is required for polar body extrusion and cytokinesis in *Caenorhabditis elegans* embryos. *J. Cell Biol.* **143**, 1635–1646. (doi:10.1083/jcb.143.6.1635)
 22. Giet R, Uzbekov R, Kireev I, Prigent C. 1999 The *Xenopus laevis* centrosome aurora/Ipl1-related kinase. *Biol. Cell* **91**, 461–470.
 23. Giet R, Glover DM. 2001 *Drosophila* aurora B kinase is required for histone H3 phosphorylation and condensin recruitment during chromosome condensation and to organize the central spindle during cytokinesis. *J. Cell Biol.* **152**, 669–682. (doi:10.1083/jcb.152.4.669)
 24. Adams RR, Wheatley SP, Gouldsworthy AM, Kandels-Lewis SE, Carmena M, Smythe C, Gerloff DL, Earnshaw WC. 2000 INCENP binds the Aurora-related kinase AIRK2 and is required to target it to chromosomes, the central spindle and cleavage furrow. *Curr. Biol.* **10**, 1075–1078. (doi:10.1016/S0960-9822(00)00673-4)
 25. Kimura M, Matsuda Y, Yoshioka T, Okano Y. 1999 Cell cycle-dependent expression and centrosome localization of a third human aurora/Ipl1-related protein kinase, AIK3. *J. Biol. Chem.* **274**, 7334–7340. (doi:10.1074/jbc.274.11.7334)
 26. Fernandez-Miranda G *et al.* 2011 Genetic disruption of aurora B uncovers an essential role for aurora C during early mammalian development. *Development* **138**, 2661–2672. (doi:10.1242/dev.066381)
 27. Slattery SD, Mancini MA, Brinkley BR, Hall RM. 2009 Aurora-C kinase supports mitotic progression in the absence of Aurora B. *Cell Cycle* **8**, 2984–2994. (doi:10.4161/cc.8.18.9591)
 28. Yang KT, Li S-K, Chang C-C, Tang C-JC, Lin Y-N, Lee S-C, Tang TK. 2010 Aurora-C kinase deficiency causes cytokinesis failure in meiosis I and production of large polyploid oocytes in mice. *Mol. Biol. Cell* **21**, 2371–2383. (doi:10.1091/mbc.E10-02-0170)
 29. Kimmins S, Crosio C, Kotaja N, Hirayama J, Monaco L, Hoog C, van Duin M, Gossen JA, Sassone-Corsi P. 2007 Differential functions of the Aurora B and Aurora-C kinases in mammalian spermatogenesis. *Mol. Endocrinol.* **21**, 726–739. (doi:10.1210/me.2006-0332)
 30. Dieterich K *et al.* 2007 Homozygous mutation of AURKC yields large-headed polyploid spermatozoa and causes male infertility. *Nat. Genet.* **39**, 661–665. (doi:10.1038/ng2027)
 31. Hans F, Skoufias DA, Dimitrov S, Margolis RL. 2009 Molecular distinctions between Aurora A and B: a single residue change transforms Aurora A into correctly localized and functional Aurora B. *Mol. Biol. Cell* **20**, 3491–3502. (doi:10.1091/mbc.E09-05-0370)
 32. Fu J, Bian M, Liu J, Jiang Q, Zhang C. 2009 A single amino acid change converts Aurora A into Aurora B-like kinase in terms of partner specificity and cellular function. *Proc. Natl Acad. Sci. USA* **106**, 6939–6944. (doi:10.1073/pnas.0900833106)
 33. Littlepage LE, Wu H, Andresson T, Deanehan JK, Amundadottir LT, Ruderman JV. 2002 Identification of phosphorylated residues that affect the activity of the mitotic kinase Aurora A. *Proc. Natl Acad. Sci. USA* **99**, 15 440–15 445. (doi:10.1073/pnas.202606599)
 34. Walter AO, Seghezzi W, Korver W, Sheung J, Lees E. 2000 The mitotic serine/threonine kinase Aurora2/AIK is regulated by phosphorylation and degradation. *Oncogene* **19**, 4906–4916. (doi:10.1038/sj.onc.1203847)
 35. Evers PA, Erikson E, Chen LG, Maller JL. 2003 A novel mechanism for activation of the protein kinase Aurora A. *Curr. Biol.* **13**, 691–697. (doi:10.1016/S0960-9822(03)00166-0)
 36. Bayliss R, Sardon T, Vernos I, Conti E. 2003 Structural basis of Aurora A activation by TPX2 at the mitotic spindle. *Mol. Cell* **12**, 851–862. (doi:10.1016/S1097-2765(03)00392-7)
 37. Zeng K, Bastos RN, Barr FA, Gruneberg U. 2010 Protein phosphatase 6 regulates mitotic spindle formation by controlling the T-loop phosphorylation state of Aurora A bound to its activator TPX2. *J. Cell Biol.* **191**, 1315–1332. (doi:10.1083/jcb.201008106)
 38. Hirota T, Kunitoku N, Sasayama T, Marumoto T, Zhang D, Nitta M, Hatakeyama K, Saya H. 2003 Aurora A and an interacting activator, the LIM protein Ajuba, are required for mitotic commitment in human cells. *Cell* **114**, 585–598. (doi:10.1016/S0092-8674(03)00642-1)
 39. Hutterer A, Berdnik D, Wirtz-Peitz F, Žigman M, Schleiffer A, Knoblich JA. 2006 Mitotic activation of the kinase Aurora A requires its binding partner Bora. *Dev. Cell* **11**, 147–157. (doi:10.1016/j.devcel.2006.06.002)
 40. Zhao ZS, Lim JP, Ng YW, Lim L, Manser E. 2005 The G1T-associated kinase PAK targets to the centrosome and regulates Aurora A. *Mol. Cell* **20**, 237–249. (doi:10.1016/j.molcel.2005.08.035)
 41. Bishop JD, Schumacher JM. 2002 Phosphorylation of the carboxyl terminus of inner centromere protein (INCENP) by the Aurora B kinase stimulates Aurora B kinase activity. *J. Biol. Chem.* **277**, 27 577–27 580. (doi:10.1074/jbc.C200307200)
 42. Sessa F, Mapelli M, Ciferri C, Tarricone C, Areces LB, Schneider TR, Stukenberg PT, Musacchio A. 2005 Mechanism of Aurora B activation by INCENP and inhibition by hesperadin. *Mol. Cell* **18**, 379–391. (doi:10.1016/j.molcel.2005.03.031)
 43. Kelly AE, Sampath SC, Maniar TA, Woo EM, Chait BT, Funabiki H. 2007 Chromosomal enrichment and activation of the aurora B pathway are coupled to spatially regulate spindle assembly. *Dev. Cell* **12**, 31–43. (doi:10.1016/j.devcel.2006.11.001)
 44. Jelluma N, Brenkman AB, van den Broek NJF, Crujnsen CWA, van Osch MHJ, Lens SMA, Medema RH, Kops GJPL. 2008 Mps1 phosphorylates Borealin to control Aurora B activity and chromosome alignment. *Cell* **132**, 233–246. (doi:10.1016/j.cell.2007.11.046)
 45. Bolton MA, Lan W, Powers SE, McClelland ML, Kuang J, Stukenberg PT. 2002 Aurora B kinase exists in a complex with survivin and INCENP and its kinase activity is stimulated by survivin binding and phosphorylation. *Mol. Biol. Cell* **13**, 3064–3077. (doi:10.1091/mbc.E02-02-0092)

46. Sugiyama K, Sugiura K, Hara T, Sugimoto K, Shima H, Honda K, Furukawa K, Yamashita S, Urano T. 2002 Aurora B associated protein phosphatases as negative regulators of kinase activation. *Oncogene* **21**, 3103–3111. (doi:10.1038/sj.onc.1205432)
47. Sun L *et al.* 2008 EB1 promotes Aurora B kinase activity through blocking its inactivation by protein phosphatase 2A. *Proc. Natl Acad. Sci. USA* **105**, 7153–7158. (doi:10.1073/pnas.0710018105)
48. Carmena M, Ruchaud S, Earnshaw WC. 2009 Making the Auroras glow: regulation of Aurora A and B kinase function by interacting proteins. *Curr. Opin. Cell Biol.* **21**, 796–805. (doi:10.1016/j.ceb.2009.09.008)
49. Lampson MA, Cheeseman IM. 2011 Sensing centromere tension: Aurora B and the regulation of kinetochore function. *Trends Cell Biol.* **21**, 133–140. (doi:10.1016/j.tcb.2010.10.007)
50. De Luca M, Brunetto L, Asteriti IA, Giubertini M, Lavia P, Guarguaglini G. 2008 Aurora A and ch-TOG act in a common pathway in control of spindle pole integrity. *Oncogene* **27**, 6539–6549. (doi:10.1038/onc.2008.252)
51. Marumoto T, Honda S, Hara T, Nitta M, Hirota T, Kohmura E, Saya H. 2003 Aurora A kinase maintains the fidelity of early and late mitotic events in HeLa cells. *J. Biol. Chem.* **278**, 51 786–51 795. (doi:10.1074/jbc.M306275200)
52. Cowley DO *et al.* 2009 Aurora A kinase is essential for bipolar spindle formation and early development. *Mol. Cell Biol.* **29**, 1059–1071. (doi:10.1128/MCB.01062-08)
53. Smith E *et al.* 2011 Differential control of Eg5-dependent centrosome separation by Plk1 and Cdk1. *EMBO J.* **30**, 2233–2245. (doi:10.1038/emboj.2011.120)
54. Mardin BR, Lange C, Baxter JE, Hardy T, Scholz SR, Fry AM, Schiebel E. 2011 Components of the Hippo pathway cooperate with Nek2 kinase to regulate centrosome disjunction. *Nat. Cell Biol.* **12**, 1166–1176. (doi:10.1038/ncb2120)
55. Bertran MT, Sdelci S, Regu e L, Avruch J, Caelles C, Roig J. 2011 Nek9 is a Plk1-activated kinase that controls early centrosome separation through Nek6/7 and Eg5. *EMBO J.* **30**, 2634–2247. (doi:10.1038/emboj.2011.179)
56. Berdnik D, Knoblich JA. 2002 *Drosophila* Aurora A is required for centrosome maturation and actin-dependent asymmetric protein localization during mitosis. *Curr. Biol.* **12**, 640–647. (doi:10.1016/S0960-9822(02)00766-2)
57. Hannak E, Kirkham M, Hyman AA, Oegema K. 2001 Aurora A kinase is required for centrosome maturation in *Caenorhabditis elegans*. *J. Cell Biol.* **155**, 1109–1116. (doi:10.1083/jcb.200108051)
58. Mori D *et al.* 2007 NDEL1 phosphorylation by Aurora A kinase is essential for centrosomal maturation, separation, and TACC3 recruitment. *Mol. Cell Biol.* **27**, 352–367. (doi:10.1128/MCB.00878-06)
59. Terada Y, Uetake Y, Kuriyama R. 2003 Interaction of Aurora A and centrosomin at the microtubule-nucleating site in *Drosophila* and mammalian cells. *J. Cell Biol.* **162**, 757–763. (doi:10.1083/jcb.200305048)
60. Barros TP, Kinoshita K, Hyman AA, Raff JW. 2005 Aurora A activates D-TACC-Msps complexes exclusively at centrosomes to stabilize centrosomal microtubules. *J. Cell Biol.* **170**, 1039–1046. (doi:10.1083/jcb.200504097)
61. Kinoshita K, Noetzel TL, Pelletier L, Mechtler K, Drechsel DN, Schwager A, Lee M, Raff JW, Hyman AA. 2005 Aurora A phosphorylation of TACC3/maskin is required for centrosome-dependent microtubule assembly in mitosis. *J. Cell Biol.* **170**, 1047–1055. (doi:10.1083/jcb.200503023)
62. Zhang X, Ems-McClung SC, Walczak CE. 2008 Aurora A phosphorylates MCAK to control ran-dependent spindle bipolarity. *Mol. Biol. Cell* **19**, 2752–2765. (doi:10.1091/mbc.E08-02-0198)
63. Jang CY, Coppinger JA, Seki A, Yates 3rd JR, Fang G. 2009 Plk1 and Aurora A regulate the depolymerase activity and the cellular localization of Kif2a. *J. Cell Sci.* **122**, 1334–1341. (doi:10.1242/jcs.044321)
64. Terada Y. 2001 Role of chromosomal passenger complex in chromosome segregation and cytokinesis. *Cell Struct. Funct.* **26**, 653–657. (doi:10.1247/csf.26.653)
65. Tanaka TU, Rachidi N, Janke C, Pereira G, Galova M, Schiebel E, Stark MJR, Nasmyth K. 2002 Evidence that the Ipl1-Sli15 (Aurora kinase-INCENP) complex promotes chromosome bi-orientation by altering kinetochore-spindle pole connections. *Cell* **108**, 317–329. (doi:10.1016/S0092-8674(02)00633-5)
66. Lan W, Zhang X, Kline-Smith SL, Rosasco SE, Barrett-Wilt GA, Shabanowitz J, Hunt DF, Walczak CE, Stukenberg PT. 2004 Aurora B phosphorylates centromeric MCAK and regulates its localization and microtubule depolymerization activity. *Curr. Biol.* **14**, 273–286.
67. Andrews PD, Ovechkina Y, Morrice N, Wagenbach M, Duncan K, Wordeman L, Swedlow JR. 2004 Aurora B regulates MCAK at the mitotic centromere. *Dev. Cell* **6**, 253–268. (doi:10.1016/S1534-5807(04)00025-5)
68. Welburn JP, Vleugel M, Liu D, Yates III JR, Lampson MA, Fukagawa T, Cheeseman IM. 2010 Aurora B phosphorylates spatially distinct targets to differentially regulate the kinetochore-microtubule interface. *Mol. Cell* **38**, 383–392. (doi:10.1016/j.molcel.2010.02.034)
69. Chan YW, Jeyaprakash AA, Nigg EA, Santamaria A. 2012 Aurora B controls kinetochore-microtubule attachments by inhibiting Ska complex-KMN network interaction. *J. Cell Biol.* **196**, 563–571. (doi:10.1083/jcb.201109001)
70. Emanuele MJ, Lan W, Jwa M, Miller SA, Chan CSM, Stukenberg PT. 2008 Aurora B kinase and protein phosphatase 1 have opposing roles in modulating kinetochore assembly. *J. Cell Biol.* **181**, 241–254. (doi:10.1083/jcb.200710019)
71. Liu D, Vleugel M, Backer CB, Hori T, Fukagawa T, Cheeseman IM, Lampson MA. 2010 Regulated targeting of protein phosphatase 1 to the outer kinetochore by KNL1 opposes Aurora B kinase. *J. Cell Biol.* **188**, 809–820. (doi:10.1083/jcb.201001006)
72. Liu D, Vader G, Vromans MJ, Lampson MA, Lens SM. 2009 Sensing chromosome bi-orientation by spatial separation of aurora B kinase from kinetochore substrates. *Science* **323**, 1350–1353. (doi:10.1126/science.1167000)
73. Nezi L, Musacchio A. 2009 Sister chromatid tension and the spindle assembly checkpoint. *Curr. Opin. Cell Biol.* **21**, 785–795. (doi:10.1016/j.ceb.2009.09.007)
74. Maldonado M, Kapoor TM. 2011 Constitutive Mad1 targeting to kinetochores uncouples checkpoint signalling from chromosome biorientation. *Nat. Cell Biol.* **13**, 475–482. (doi:10.1038/ncb2223)
75. Losada A, Hirano M, Hirano T. 2002 Cohesin release is required for sister chromatid resolution, but not for condensin-mediated compaction, at the onset of mitosis. *Genes Dev.* **16**, 3004–3016. (doi:10.1101/gad.249202)
76. Gimenez-Abian JF, Sumara I, Hirota T, Hauf S, Gerlich D, de la Torre C, Ellenberg J, Peters J-M. 2004 Regulation of sister chromatid cohesion between chromosome arms. *Curr. Biol.* **14**, 1187–1193. (doi:10.1016/j.cub.2004.06.052)
77. Buvelot S, Tatsutani SY, Vermaak D, Biggins S. 2003 The budding yeast Ipl1/Aurora protein kinase regulates mitotic spindle disassembly. *J. Cell Biol.* **160**, 329–339. (doi:10.1083/jcb.200209018)
78. Ruchaud S, Carmena M, Earnshaw WC. 2007 Chromosomal passengers: conducting cell division. *Nat. Rev. Mol. Cell Biol.* **8**, 798–812. (doi:10.1038/nrm2257)
79. Jordan P, Copsley A, Newnham L, Kolar E, Lichten M, Hoffmann E. 2009 Ipl1/Aurora B kinase coordinates synaptonemal complex disassembly with cell cycle progression and crossover formation in budding yeast meiosis. *Genes Dev.* **23**, 2237–2251. (doi:10.1101/gad.536109)
80. Carmena M, Earnshaw WC. 2003 The cellular geography of aurora kinases. *Nat. Rev. Mol. Cell Biol.* **4**, 842–854. (doi:10.1038/nrm1245)
81. Honda R, Korner R, Nigg EA. 2003 Exploring the functional interactions between Aurora B, INCENP, and survivin in mitosis. *Mol. Biol. Cell* **14**, 3325–3341. (doi:10.1091/mbc.E02-11-0769)
82. Hardwicke MA *et al.* 2009 GSK1070916, a potent Aurora B/C kinase inhibitor with broad antitumor activity in tissue culture cells and human tumor xenograft models. *Mol. Cancer Ther.* **8**, 1808–1817. (doi:10.1158/1535-7163.MCT-09-0041)
83. Yang J *et al.* 2007 AZD1152, a novel and selective aurora B kinase inhibitor, induces growth arrest, apoptosis, and sensitization for tubulin depolymerizing agent or topoisomerase II inhibitor in human acute leukemia cells in vitro and in vivo. *Blood* **110**, 2034–2040. (doi:10.1182/blood-2007-02-073700)
84. Kettenbach AN, Schweppe DK, Faherty BK, Pechenik D, Pletnev AA, Gerber SA. 2011 Quantitative phosphoproteomics identifies substrates and functional modules of Aurora and Polo-like kinase activities in mitotic cells. *Sci. Signal.* **4**, rs5. (doi:10.1126/scisignal.2001497)

85. Kim Y, Holland AJ, Lan W, Cleveland DW. 2010 Aurora kinases and protein phosphatase 1 mediate chromosome congression through regulation of CENPE. *Cell* **142**, 444–455. (doi:10.1016/j.cell.2010.06.039)
86. Wood KW, Sakowicz R, Goldstein LS, Cleveland DW. 1997 CENPE is a plus end-directed kinetochore motor required for metaphase chromosome alignment. *Cell* **91**, 357–366. (doi:10.1016/S0092-8674(00)80419-5)
87. Schaar BT, Chan GK, Maddox P, Salmon ED, Yen TJ. 1997 CENPE function at kinetochores is essential for chromosome alignment. *J. Cell Biol.* **139**, 1373–1382. (doi:10.1083/jcb.139.6.1373)
88. Tanaka TU, Stark MJ, Tanaka K. 2005 Kinetochore capture and bi-orientation on the mitotic spindle. *Nat. Rev. Mol. Cell Biol.* **6**, 929–942. (doi:10.1038/nrm1764)
89. Rieder CL, Alexander SP. 1990 Kinetochore are transported poleward along a single astral microtubule during chromosome attachment to the spindle in newt lung cells. *J. Cell Biol.* **110**, 81–95. (doi:10.1083/jcb.110.1.81)
90. Savoian MS, Goldberg ML, Rieder CL. 2000 The rate of poleward chromosome motion is attenuated in *Drosophila zw10* and rod mutants. *Nat. Cell Biol.* **2**, 948–952. (doi:10.1038/35046605)
91. Sharp DJ, Rogers GC, Scholey JM. 2000 Cytoplasmic dynein is required for poleward chromosome movement during mitosis in *Drosophila* embryos. *Nat. Cell Biol.* **2**, 922–930. (doi:10.1038/35046574)
92. Kim Y, Heuser JE, Waterman CM, Cleveland DW. 2008 CENPE combines a slow, processive motor and a flexible coiled coil to produce an essential motile kinetochore tether. *J. Cell Biol.* **181**, 411–419. (doi:10.1083/jcb.200802189)
93. Kapoor TM, Lampson MA, Hergert P, Cameron L, Cimini D, Salmon ED, McEwen BF, Khodjakov A. 2006 Chromosomes can congress to the metaphase plate before biorientation. *Science* **311**, 388–391. (doi:10.1126/science.1122142)
94. Tanudji M, Shoemaker J, L'Italien L, Russell L, Chin G, Schebye XM. 2004 Gene silencing of CENPE by small interfering RNA in HeLa cells leads to missegregation of chromosomes after a mitotic delay. *Mol. Biol. Cell* **15**, 3771–3781. (doi:10.1091/mbc.E03-07-0482)
95. Tanenbaum ME, Macurek L, vanÂderÂvaart B, Galli M, Akhmanova A, Medema R. 2011 A complex of Kif18b and MCAK promotes microtubule depolymerization and is negatively regulated by Aurora kinases. *Curr. Biol.* **21**, 1356–1365. (doi:10.1016/j.cub.2011.07.017)
96. Zimniak T, Stengl K, Mechtler K, Westermann S. 2009 Phosphoregulation of the budding yeast EB1 homologue Bim1p by Aurora/Ipl1p. *J. Cell Biol.* **186**, 379–391. (doi:10.1083/jcb.200901036)
97. Loughlin R, Wilbur JD, McNally FJ, Nedelec FJ, Heald R. 2011 Katanin contributes to interspecies spindle length scaling in *Xenopus*. *Cell* **147**, 1397–1407. (doi:10.1016/j.cell.2011.11.014)
98. Hunter AW, Caplow M, Coy DL, Hancock WO, Diez S, Wordeman L, Howard J. 2003 The kinesin-related protein MCAK is a microtubule depolymerase that forms an ATP-hydrolyzing complex at microtubule ends. *Mol. Cell* **11**, 445–457. (doi:10.1016/S1097-2765(03)00049-2)
99. Weaver LN, Walczak C. 2011 Kinesin-8s hang on by a tail. *Bioarchitecture* **1**, 236–239. (doi:10.4161/bioa.18427)
100. Tanenbaum ME, Medema RH, Akhmanova A. 2011 Regulation of localization and activity of the microtubule depolymerase MCAK. *Bioarchitecture* **1**, 80–87. (doi:10.4161/bioa.1.2.15807)
101. Ohi R, Sapra T, Howard J, Mitchison TJ. 2004 Differentiation of cytoplasmic and meiotic spindle assembly MCAK functions by Aurora B-dependent phosphorylation. *Mol. Biol. Cell* **15**, 2895–2906. (doi:10.1091/mbc.E04-02-0082)
102. Zhang X, Lan W, Ems-McClung SC, Stukenberg PT, Walczak CE. 2007 Aurora B phosphorylates multiple sites on mitotic centromere-associated kinesin to spatially and temporally regulate its function. *Mol. Biol. Cell* **18**, 3264–3276. (doi:10.1091/mbc.E07-01-0086)
103. Rath U, Sharp DJ. 2011 The molecular basis of anaphase A in animal cells. *Chromosome Res.* **19**, 423–432. (doi:10.1007/s10577-011-9199-2)
104. Mitchison TJ. 2005 Mechanism and function of poleward flux in *Xenopus* extract meiotic spindles. *Phil. Trans. R. Soc. B* **360**, 623–629. (doi:10.1098/rstb.2004.1616)
105. Rogers GC, Rogers SL, Sharp DJ. 2005 Spindle microtubules in flux. *J. Cell Sci.* **118**, 1105–1116. (doi:10.1242/jcs.02284)
106. Joglekar AP, Bloom KS, Salmon ED. 2010 Mechanisms of force generation by end-on kinetochore-microtubule attachments. *Curr. Opin. Cell Biol.* **22**, 57–67. (doi:10.1016/j.cub.2009.12.010)
107. Ganem NJ, Upton K, Compton DA. 2005 Efficient mitosis in human cells lacking poleward microtubule flux. *Curr. Biol.* **15**, 1827–1832. (doi:10.1016/j.cub.2005.08.065)
108. Manning AL, Ganem NJ, Bakhoum SF, Wagenbach M, Wordeman L, Compton DA. 2007 The kinesin-13 proteins Kif2a, Kif2b, and Kif2c/MCAK have distinct roles during mitosis in human cells. *Mol. Biol. Cell* **18**, 2970–2979. (doi:10.1091/mbc.E07-02-0110)
109. Zimniak T, Fitz V, Zhou H, Lampert F, Opravil S, Mechtler K, Stolt-Bergner P, Westermann S. 2012 Spatiotemporal regulation of Ipl1/Aurora activity by direct Cdk1 phosphorylation. *Curr. Biol.* **22**, 787–793. (doi:10.1016/j.cub.2012.03.007)
110. Goodwin SS, Vale RD. 2010 Patronin regulates the microtubule network by protecting microtubule minus ends. *Cell* **143**, 263–274. (doi:10.1016/j.cell.2010.09.022)
111. Roll-Mecak A, McNally FJ. 2010 Microtubule-severing enzymes. *Curr. Opin. Cell Biol.* **22**, 96–103. (doi:10.1016/j.cub.2009.11.001)
112. Zhang D, Rogers GC, Buster DW, Sharp DJ. 2007 Three microtubule severing enzymes contribute to the 'Pacman-flux' machinery that moves chromosomes. *J. Cell Biol.* **177**, 231–242. (doi:10.1083/jcb.200612011)
113. Brown JR, Koretke KK, Birkeland ML, Sanseau P, Patrick DR. 2004 Evolutionary relationships of Aurora kinases: implications for model organism studies and the development of anti-cancer drugs. *BMC Evol. Biol.* **4**, 39. (doi:10.1186/1471-2148-4-39)
114. Shirk K, Jin H, Giddings Jr TH, Winey M, Yu HG. 2011 The Aurora kinase Ipl1 is necessary for spindle pole body cohesion during budding yeast meiosis. *J. Cell Sci.* **124**, 2891–2896. (doi:10.1242/jcs.086652)
115. Demidov D, Van Damme D, Geelen D, Blattner FR, Houben A. 2005 Identification and dynamics of two classes of aurora-like kinases in *Arabidopsis* and other plants. *Plant Cell* **17**, 836–848. (doi:10.1105/tpc.104.029710)
116. Abe Y, Okumura E, Hosoya T, Hirota T, Kishimoto T. 2010 A single starfish Aurora kinase performs the combined functions of Aurora A and Aurora B in human cells. *J. Cell Sci.* **123**, 3978–3988. (doi:10.1242/jcs.076315)
117. Li H, Chen Q, Kaller M, Nellen W, Graf R, De Lozanne A. 2008 Dictyostelium Aurora kinase has properties of both Aurora A and Aurora B kinases. *Eukaryot. Cell* **7**, 894–905. (doi:10.1128/EC.00422-07)
118. James TY *et al.* 2006 Reconstructing the early evolution of Fungi using a six-gene phylogeny. *Nature* **443**, 818–822. (doi:10.1038/nature05110)
119. Telford MJ, Bourlat SJ, Economou A, Papillon D, Rota-Stabelli O. 2008 The evolution of the Ecdysozoa. *Phil. Trans. R. Soc. B* **363**, 1529–1537. (doi:10.1098/rstb.2007.2243)
120. Kuo CH, Wares JP, Kissinger JC. 2008 The Apicomplexan whole-genome phylogeny: an analysis of incongruence among gene trees. *Mol. Biol. Evol.* **25**, 2689–2698. (doi:10.1093/molbev/msn213)
121. Baldauf SL. 2008 An overview of the phylogeny and diversity of eukaryotes. *J. Syst. Evol.* **46**, 263–273.
122. Egger B *et al.* 2009 To be or not to be a flatworm: the acoele controversy. *PLoS ONE* **4**, e5502. (doi:10.1371/journal.pone.0005502)
123. Schmitt N, Nick P. 2008 Microtubules and the evolution of mitosis. *Plant Microtubules*, 233–266. (doi:10.1007/7089_2007_161)
124. Carvalho-Santos Z, Azimzadeh J, Pereira-Leal JB, Bettencourt-Dias M. 2011 Evolution: tracing the origins of centrioles, cilia, and flagella. *J. Cell Biol.* **194**, 165–175. (doi:10.1083/jcb.201011152)
125. Terada Y, Tatsuka M, Suzuki F, Yasuda Y, Fujita S, Otsu M. 1998 AIM-1: a mammalian midbody-associated protein required for cytokinesis. *EMBO J.* **17**, 667–676. (doi:10.1093/emboj/17.3.667)
126. Gopalan G, Chan CS, Donovan PJ. 1997 A novel mammalian, mitotic spindle-associated kinase is related to yeast and fly chromosome segregation regulators. *J. Cell Biol.* **138**, 643–656. (doi:10.1083/jcb.138.3.643)
127. Schumacher JM, Ashcroft N, Donovan PJ, Golden A. 1998 A highly conserved centrosomal kinase, AIR-1, is required for accurate cell cycle progression and segregation of developmental factors in *Caenorhabditis elegans* embryos. *Development* **125**, 4391–4402.
128. Roghi C *et al.* 1998 The *Xenopus* protein kinase pEg2 associates with the centrosome in a cell

- cycle-dependent manner, binds to the spindle microtubules and is involved in bipolar mitotic spindle assembly. *J. Cell Sci.* **111**, 557–572.
129. Biggins S, Severin FF, Bhalla N, Sassoon I, Hyman AA, Murray AW. 1999 The conserved protein kinase lpl1 regulates microtubule binding to kinetochores in budding yeast. *Genes Dev.* **13**, 532–544. (doi:10.1101/gad.13.5.532)
130. Petersen J, Paris J, Willer M, Philippe M, Hagan IM. 2001 The *S. pombe* aurora-related kinase Ark1 associates with mitotic structures in a stage dependent manner and is required for chromosome segregation. *J. Cell Sci.* **114**, 4371–4384.
131. Reininger L, Wilkes JM, Bourgade H, Miranda-Saavedra D, Doerig C. 2010 An essential Aurora-related kinase transiently associates with spindle pole bodies during *Plasmodium falciparum* erythrocytic schizogony. *Mol Microbiol* **79**, 205–221. (doi:10.1111/j.1365-2958.2010.07442.x)
132. Li Z, Umeyama T, Wang CC. 2009 The Aurora kinase in *Trypanosoma brucei* plays distinctive roles in metaphase-anaphase transition and cytokinetic initiation. *PLoS Pathog.* **5**, e1000575. (doi:10.1371/journal.ppat.1000575)
133. Luo M, Cao M, Kan Y, Li G, Snell W, Pan J. 2011 The phosphorylation state of an aurora-like kinase marks the length of growing flagella in *Chlamydomonas*. *Curr. Biol.* **21**, 586–591. (doi:10.1016/j.cub.2011.02.046)
134. Tu X, Kumar P, Li Z, Wang CC. 2006 An aurora kinase homologue is involved in regulating both mitosis and cytokinesis in *Trypanosoma brucei*. *J. Biol. Chem.* **281**, 9677–9687. (doi:10.1074/jbc.M511504200)
135. Li Z, Umeyama T, Wang CC. 2008 The chromosomal passenger complex and a mitotic kinesin interact with the Tousled-like kinase in trypanosomes to regulate mitosis and cytokinesis. *PLoS ONE* **3**, e3814. (doi:10.1371/journal.pone.0003814)
136. Li Z, Wang CC. 2006 Changing roles of Aurora B kinase in two life cycle stages of *Trypanosoma brucei*. *Eukaryot. Cell* **5**, 1026–1035. (doi:10.1128/EC.00129-06)
137. Pan J, Snell WJ. 2000 Regulated targeting of a protein kinase into an intact flagellum. An aurora/lpl1p-like protein kinase translocates from the cell body into the flagella during gamete activation in *Chlamydomonas*. *J. Biol. Chem.* **275**, 24 106–24 014. (doi:10.1074/jbc.M002686200)
138. Knowlton AL, Vorozhko VV, Lan W, Gorbysky GJ, Stukenberg PT. 2009 ICIS and Aurora B coregulate the microtubule depolymerase Kif2a. *Curr. Biol.* **19**, 758–763. (doi:10.1016/j.cub.2009.03.018)
139. Hornbeck PV, Kornhauser JM, Tkachev S, Zhang B, Skrzypek E, Murray B, Latham V, Sullivan M. 2012 PhosphoSitePlus: a comprehensive resource for investigating the structure and function of experimentally determined post-translational modifications in man and mouse. *Nucl. Acids Res.* **40**, D261–D270. (doi:10.1093/nar/gkr1122)