

# ASSESSMENT OF THE POSSIBILITY TO REMOTELY MONITOR AND CONTROL A pH PROCESS: AN EXPERIMENTAL STUDY

Nayeem N. Karnachi Geoff Waterworth and Karl Darbyshire

Faculty of Information and Engineering Systems  
Leeds Metropolitan University  
City Campus, Leeds LS1 3HE  
United Kingdom

[n.karnachi@leedsmet.ac.uk](mailto:n.karnachi@leedsmet.ac.uk), [g.waterworth@leedsmet.ac.uk](mailto:g.waterworth@leedsmet.ac.uk), [k.darbyshire@leedsmet.ac.uk](mailto:k.darbyshire@leedsmet.ac.uk)

## ABSTRACT

The control of pH is important in many processes including wastewater treatment, chemical processes and biological processes. This paper considers a model reference non-linear control scheme. The method is tested using a 7-litre continuously stirred tank reactor to neutralise a strong acid using a strong alkaline solution. The method is first realised using a simulation of the process. Subsequently, it is demonstrated on an experimental rig using real-time control. Furthermore, the process is monitored remotely and controlled with a software using e-Technology. Experimental results confirm that a robust control and remote monitoring of the process is achievable.

## 1 INTRODUCTION

In many processes, pH neutralisation is a very fast and simple reaction. In terms of practical control, it is recognised as a difficult control problem (1), (2), (3). The difficulties arise from high process nonlinearity (the process gain can change tens or hundreds of times over a small pH range) and from changes in the pH characteristics due to changes in influent concentration. Various techniques have been developed to control process pH. Young and Rao (4) presented a variable structure controller (“sliding mode control for a neutralisation process”) involving strong acids and bases. Parrish and Brosilow (5) used non-linear inferential control in a simple simulated neutralisation process, using static estimation of the concentration of a single monoprotic weak acid. Kulkarni et al. (6) presented non-linear internal model control for a simulated system of sodium hydroxide (NaOH) and hydrochloric acid (HCl). Li et al. (7) and Li and Biegler (8) presented non-linear feedback methods for a simulated neutralisation process. In the present work, a non-linear controller design is implemented. It uses a design procedure presented by Jayadeva et al. (9). The controller is implemented practically on a 7-litre reactor.

## 2 THEORY

In the present work, the design of a robust non-linear controller is introduced. It considers a model reference controller developed by Jayadeva et al. (10). The method is taken originally from a paper by Yuocef -Toumi and Ito (11). The control scheme is non-linear model reference (12).

### 2.1 Controller Design

Consider a single input and single output (SISO) state variable system of the form

$$\begin{aligned} \dot{x}_1 &= f_1(x_1, x_2, \dots, x_n) + g_1(x_1, x_2, \dots, x_n)u + d_1(x, t) \\ &\vdots \\ \dot{x}_n &= f_n(x_1, x_2, \dots, x_n) + g_n(x_1, x_2, \dots, x_n)u + d_n(x, t) \end{aligned} \quad [1]$$

$$y = c_1x_1 + c_2x_2 \dots + c_nx_n \quad [2]$$

where,  $u$  is a scalar manipulative input,  $x_1, x_2, \dots, x_n$  are the states and  $y$  is a scalar output.  $f_i$  and  $g_i$  are nonlinear functions of state variables.  $d_1, d_2, \dots, d_n$  represent general disturbances. The output variable  $y$  is a linear function of the state variable.  $c_1, c_2, \dots, c_n$  are constant scalars. Yuocef-Toumi and Ito presented a robust nonlinear feedback controller design for a general nonlinear multi-input state variable system, from which a least square solution for the manipulative variable was obtained. The method is applied to the specific form of Equation [1] and [2] to obtain an exact solution for the manipulative variable. Equation [1] and [2] can be written in vector form as

$$\dot{x} = f + gu + d \quad [3]$$

$$y = cx \quad [4]$$

where the vectors  $f$  and  $g$  are functions of  $x$ , and  $c$  is a constant row vector. Let us assume the reference model in the scalar output  $y_m$  is given by

$$\dot{y}_m = \lambda_m y_m + b_m r \quad [5]$$

where,  $\lambda_m$  is the eigen value of reference model. The scalar  $e$  is defined as the difference between reference value and the process output. Therefore,

$$e = y_m - y \quad [6]$$

The control objective is to force the error to vanish with a desired dynamics:

$$\dot{e} = \lambda e \quad [7]$$

Where,  $\lambda$  is the eigen value for the error system. By combining Equations [3] – [7] we obtain the equation that governs the error dynamics. Therefore,

$$\begin{aligned}\dot{e} &= \dot{y}_m - \dot{y} \\ &= \lambda_m y_m + b_m r - cf - cgu - cd\end{aligned}\quad [8]$$

as  $\lambda_m e = \lambda_m (y_m - y)$  therefore,

$$= \lambda_m e + (\lambda_m y + b_m r - cf - cgu - cd) \quad [9]$$

It is possible to determine the manipulative variable  $u$  in Equation [9] such that

$$(\lambda_m y + b_m r - cf - cgu - cd) = ke \quad [10]$$

From which we have the manipulative variable

$$u = (cg)^{-1} [b_m r - cf - cd - ke + \lambda_m y] \quad [11]$$

Therefore Equation [9] becomes

$$\begin{aligned}\dot{e} &= (\lambda_m + k) e \\ \dot{e} &= \lambda e\end{aligned}\quad [12]$$

Where,  $k$  is a scalar error feedback gain. The error system eigen value  $\lambda$  can be assigned arbitrarily through proper choice of the error feedback gain  $k$ . The control law in Equation [11] is used to calculate  $u$  in order to get the desired error dynamics (10).

Now consider the application of the above control design to the model for the pH process described by McAvoy et al. (13). The process consists of a strong acid flowing into a constant volume tank which is thoroughly mixed with a strong base. The feed flow rate of the base is to be controlled in such a way as to produce a neutral outlet from the tank. The equation describing this process is given by

$$\dot{x} = a_1 x - a_2 u(x + a_2) + a_1 D \quad [13]$$

Where,  $x$  is the deviation from neutrality. Note that,  $x$  and the pH value  $y$ , are related by the non-linear equation:

$$x(t) = 10^{-y(t)} - 10^{y(t)} K_w \quad [14]$$

Where  $K_w$  = water equilibrium constant =  $10^{-14}$ ,  $a_1 = F_1/V$ ,  $F_1$  is the acid flow in litres and  $V$  the volume of the mixing tank;  $a_2 = C_{\text{base}}$  = concentration of base;  $a_3 = 1/V$  are constant parameters;  $u = F_2$ , is the manipulative variable, base flow control in litres;  $D = C_{\text{acid}}$  = concentration of acid = the disturbance variable. It is to be noted that Equation [14] is valid for the strong acid / strong base case only. For the general case, there are two model equations [1], [3].

Now, comparing Equation [13] with [3], we have,

$$f(x) = -a_1 x; \quad g(x) = -a_2(x + a_2); \quad d(t) = a_1 D$$

And the output equation,

$$h(x, y) = x + 10y - 14 - 10^{-y} = 0 \quad [15]$$

The control objective is to keep pH,  $y(t) = 7 = \text{constant}$  in the presence of disturbances occurring in the process in general, making  $y(t)$  follow a given reference trajectory. In the control design, the output equation is a linear function of the state variables. But, Equation [15] is a non-linear implicit output equation. Hence, for this nonlinear process, the controller design procedure requires to be suitably modified. Therefore we apply the following partial differentiation identity to Equation [15]:

$$\frac{\partial h}{\partial y} \dot{y} + \frac{\partial h}{\partial x} \dot{x} = 0 \quad [16]$$

hence

$$\dot{y} = - \left\{ \frac{\frac{\partial h}{\partial x}}{\frac{\partial h}{\partial y}} \right\} \dot{x} \quad [17]$$

Using Equations [3], [6], [8] and [17] we get:

$$\begin{aligned} \dot{e} &= \lambda_m y_m + b_m r + \left[ \frac{\partial h}{\partial x} / \frac{\partial h}{\partial y} \right] [f(x) + g(x)u + d(t)] \\ &= \lambda_m y_m + b_m r + J [f(x) + g(x)u + d(t)] \end{aligned} \quad [18]$$

$$\text{where } J = \left( \frac{\partial h}{\partial x} \right) / \left( \frac{\partial h}{\partial y} \right) \quad [20]$$

If we make,

$$\lambda_m y_m + b_m r + J [f(x) + g(x)u + d(t)] = ke \quad [21]$$

then the control law is calculated as:

$$u = -(Jg)^{-1} (\lambda_m y + b_m r - ke + Jf + Jd) \quad [22]$$

Equation [19] becomes:

$$\dot{e} = (\lambda_m + k) e \quad [23]$$

$$= \lambda e \quad [24]$$

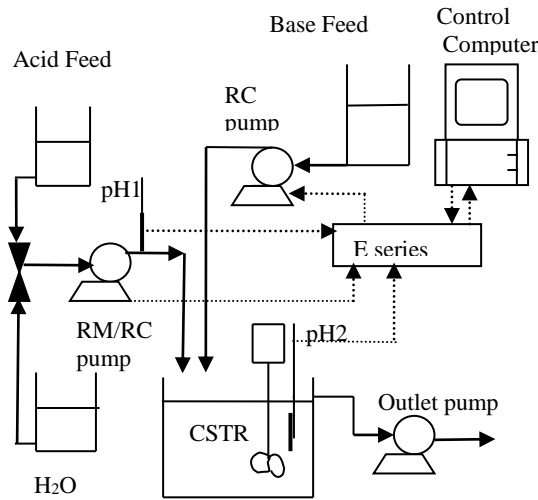
It is to be noted that since the disturbance term  $d(t)$  appears in the control law, it is essentially a combined feedback-feedforward control action (10). The expression for the control law of Equation [22] in terms of the plant variable  $y$  only is given by

$$u(t) = \frac{[(10^{y-14} + 10^{-y})(2.303)(\lambda_m r + b_m r - ke) - a_1(-10^{y-14} + 10^{-y}) + a_1 D]}{[a_3(-10^{y-14} + 10^{-y}) + a_3 a_2]} \quad [25]$$

### 3 EXPERIMENTAL SET UP

Figure 2 shows the experimental set up for the pH neutralisation system. The process stream (influent) consists of a diluted strong acid (HCl) and the titrating stream is a more concentrated strong base (NaOH). Table 1 consists of typical operating conditions. The process stream is fed through two feed tanks, and a 3-way valve is placed in the feed line, which allows switching between two different feed concentrations. A remote control peristaltic pump (RM pump) is used

to control the flow rate of the titrating stream. The volume of the reactor vessel is kept constant at 5-litres with an over flow system. An agitator is used to ensure proper mixing. The pH of the influent, the pH of the mixture in Continuously Stirred Tank Reactor (CSTR) and the influent flow are measured by a data acquisition system (National Instruments E series I/O card and a PC with LabVIEW Instrumentation package). The control objective is to maintain the pH value at the set point = 7. The control output is calculated according to the non-linear model reference control law (Equation [25]). The digital output is converted to an analogue output, and the signal is transmitted to a remote control peristaltic pump (RC pump) that controls the base flow rate. The sampling time for the measurements is 0.1 of a second and the control law is executed at approximately the same time (considering the time taken for control computation by the package and the operating system).



**Fig 2 Laboratory set-up of the pH Neutralisation Process**

**Table 1- Typical operating conditions for the pH neutralisation process**

Parameters	Values
Acid Flow ( $F_1$ )	Variable
Base Flow ( $u$ ) variable	Manipulative
Conc. Of acid ( $D$ )	0.01M – 0.005M
Conc. Of base ( $a_2$ )	0.2M

### 4 SIMULATIONS

A continuous time simulation of the controller was undertaken to confirm the results obtained by Jayadeva et al. (10). Open loop response of the process was considered for a disturbance of

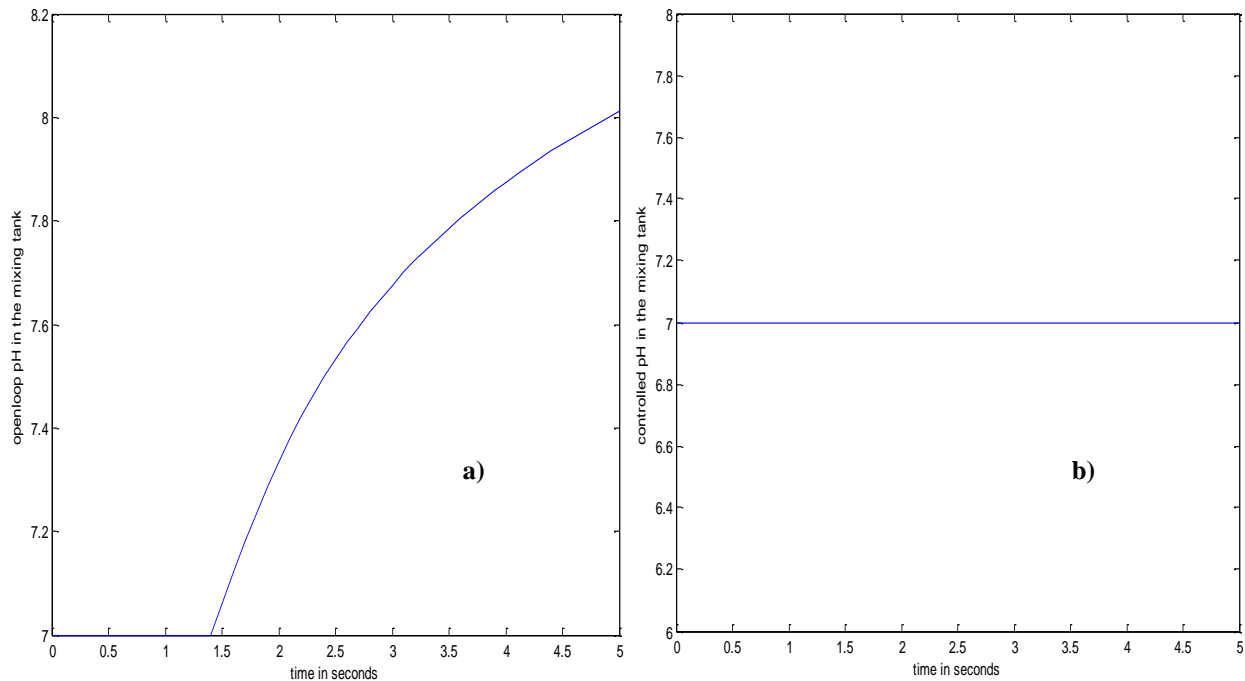
100% reduction in the concentration of influent by diluting the influent and effectively reducing the concentration from 0.01M to 0.005M at 1.4 seconds. Figure 3a shows the open loop response of the plant. With the non-linear model reference controller, the closed loop response of the plant is as shown in Figure 3b. The corresponding change in the control action is shown in Figure 3c.

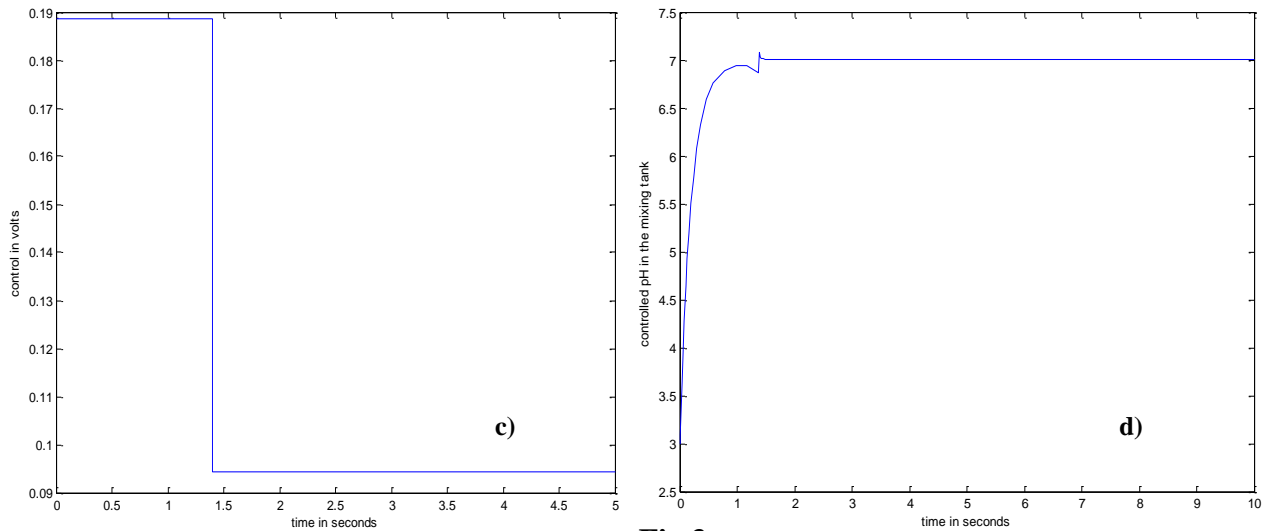
The above simulations assumed steady conditions while the above disturbance occurred. Therefore the controller was tested for a change in operating point by simulating the process at different initial conditions. Figure 3d is the simulation response of the plant for a change in the operating point from pH 7 to pH 3 along with the disturbance in concentration at 1.4 seconds. The controller responds robustly to both the disturbances as a glitch can be observed at 1.4 second interval in Figure 3d. The controller was also successfully tested for disturbances both in the flow of the influent and concentration. Finally, the continuous controller is studied with sampled input and output signals before practical implementation. Hence zero order holds are applied to model this effect on the continuous process (Figure 4). The Simulink model incorporates the change in disturbance with respect to time as shown in Figure 4. The effect due to the change in influent flow was also studied with slight modification in the model.

Analysis was done for the allowable sampling time for real-time implementation with Zero-order hold at both input source and output sampling.

## 5 REAL TIME IMPLEMENTATION OF THE CONTROLLER

The pH sensor is assumed to be linear and the temperature is assumed to be constant (1). pH sensors have very high source impedance and it is therefore necessary to use a high input impedance buffer amplifier. A low pass filter is used to reject AC mains 50Hz. Differential



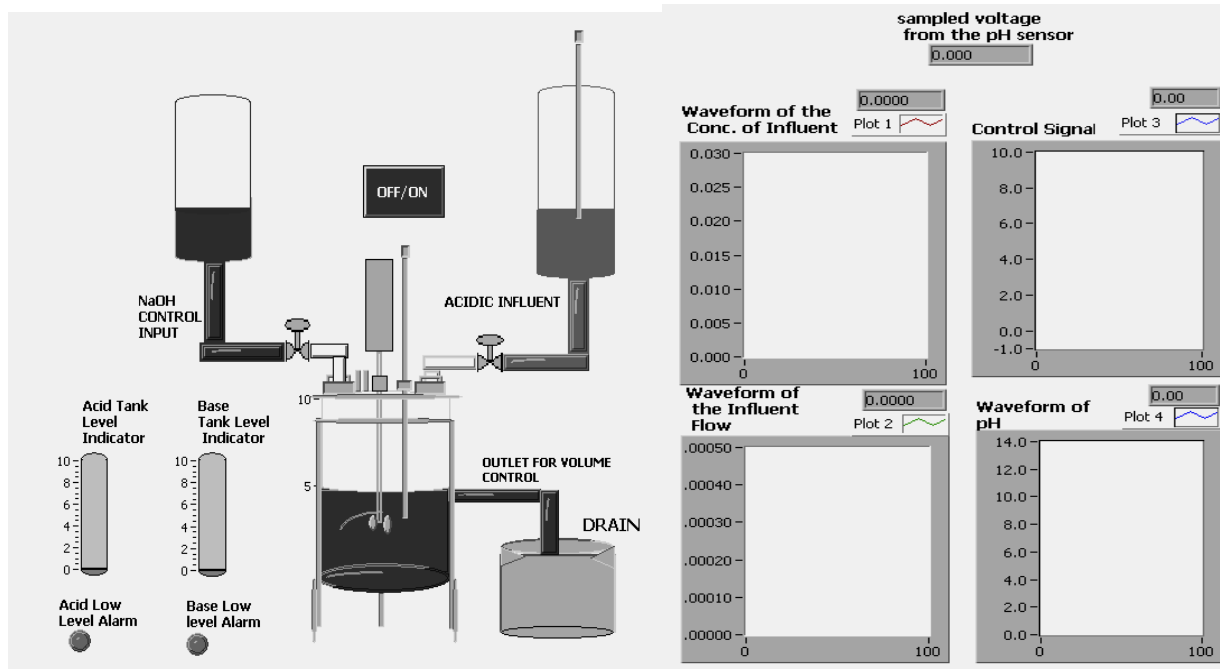


**Fig 3**

- a) Step response simulation of the plant for a disturbance of 100% reduction in influent concentration.
- b) Controlled pH value for the same disturbance at 1.4 seconds as in a).
- c) Controller in action for the disturbance of 100% reduction in the influent concentration.
- d) Controlled pH for a simulation of the controller at different operating point along

analogue input mode is preferred to single channel analogue input of the I/O card for sensor signal feed, as Common Mode Rejection Ratio (CMRR) is very high in this mode. The control signal range for the pump so that it responds linearly is 0-10 volts. The concentration of the solutions is accordingly chosen considering the constraint.

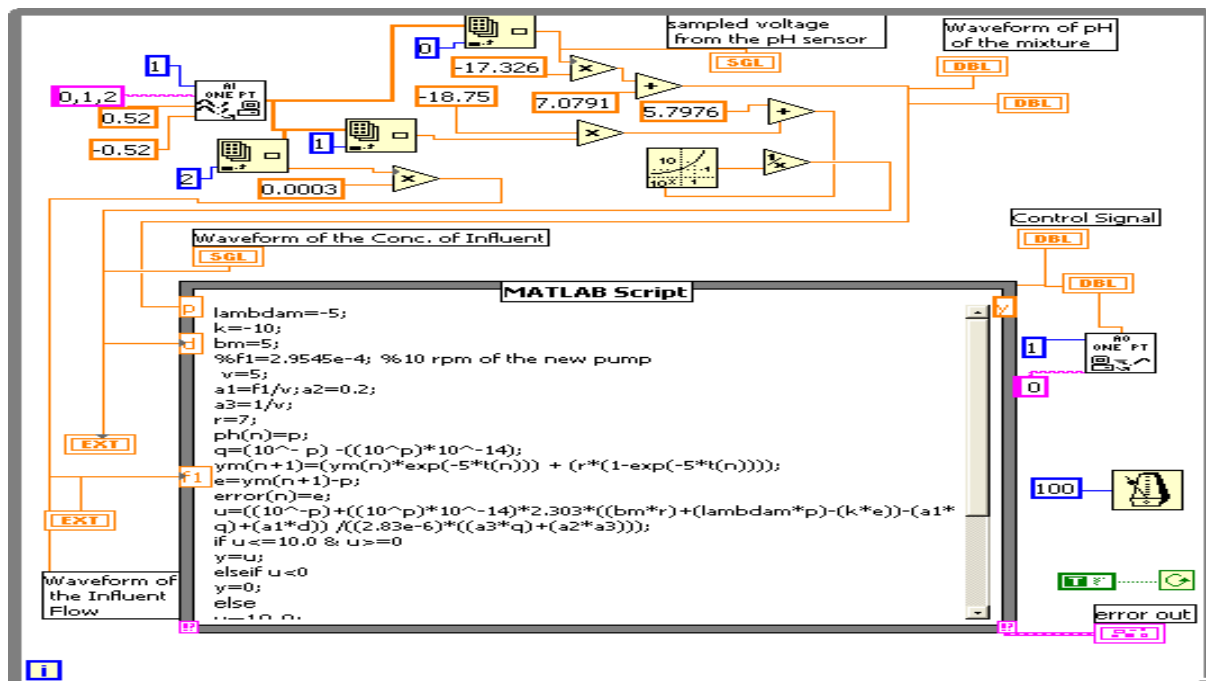
### 5.1 Software Platform



**Fig 5 Pictorial view of the front panel of a VI to control the pH process**

LabVIEW, a real-time virtual instrument package, is used to implement the control strategy. This is a development environment based on a graphical programming language. A LabVIEW file is called Virtual Instrument (VI). Each VI consists of two items: a block diagram (Figure 6) and a front panel (Figure 5). The front panel is the graphical user interface where the user can enter commands, values, and manipulate objects such as knobs and buttons to control the application. The front panel is also where results from the execution of the application are presented through indicators, charts, and many other graphical displays. We can drop objects in the front panel, which in turn create terminals in the block diagram. The data can be wired in or out of these objects, and pass it back and forth between the front panel and the code in the block diagram. The easy accessibility of Matlab code within the LabVIEW environment is utilised for complete implementation and data retrieval and remote monitoring of hazardous processes. Figure 6 partly shows the VI diagram of the program for 0.1 of a second sampling delay.

While remotely monitoring the process, front panel of the VI can be programmed to generate specific alarms such as one for low level of control reagent. The process can be completely shut through the Front panel in case of emergencies. The alkalinity of the mixture in the CSTR can be gauged by using logical operatives to indicate this by changing the colour of the solution in the front panel along with graphical representation. Figure 7 further illustrates the possibility of monitoring and controlling the process using the internet.



**Fig 6 Pictorial VI block diagram to control and monitor the pH process**

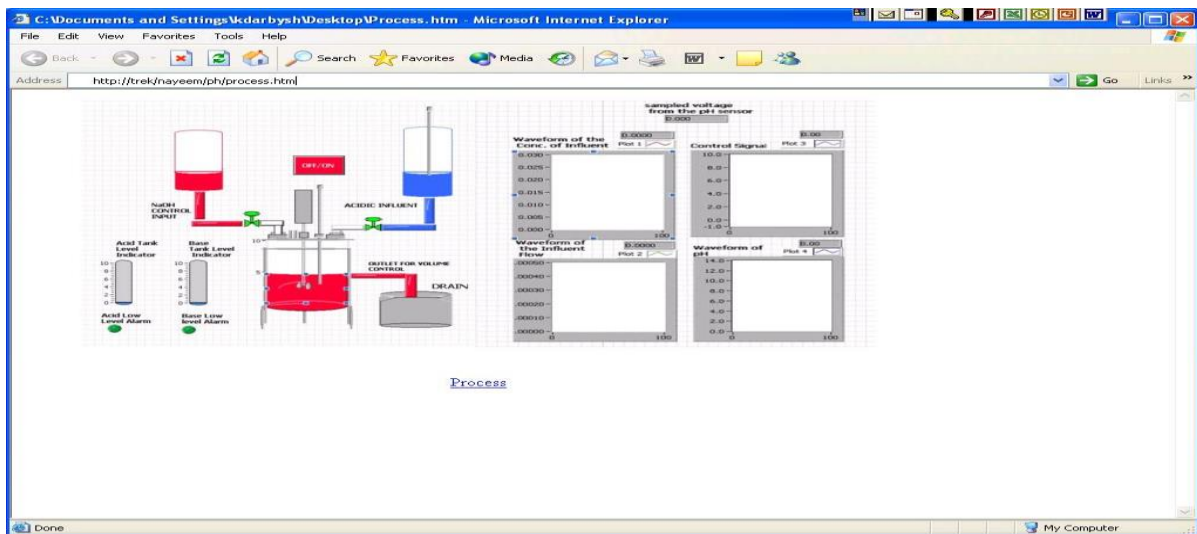


## 6 ANALYSIS

The controller is tested for the most common of the disturbances, which are the changes in the flow of the influent and the concentration. The experiment is conducted approximately for 3 minutes with the change in concentration after 1 minute (Figure 8) and then the change in flow after 2 minutes. The controller robustly responds for the disturbances with no apparent change in the pH of the mixture. It was inferred during simulation that, the maximum sampling time can be 0.2 second. But the response of the plant was not as quite the continuous time response (Figure 3). One of the reasons is the limitation of the control pump. The instantaneous control values were noted to be the same as the continuous time values.

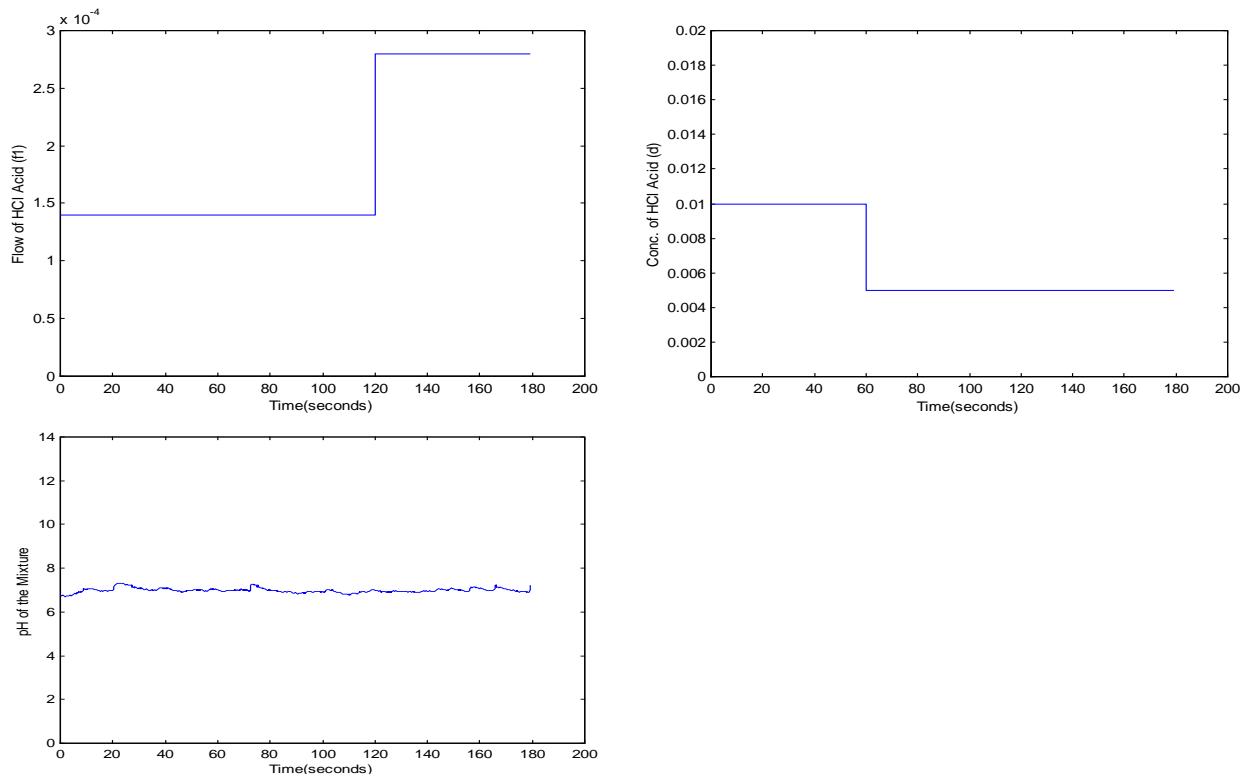
## 7 CONCLUSIONS

This study is a part of the research to propose a non-linear adaptive control scheme for pH control of wastewater and implement it on an industrial scale for a water company in the United Kingdom. A lot of research is only simulation based, understandably, due to many factors such as cost etc. Therefore, the importance of real-time implementation has also been



**Fig 7 Browser window to monitor and control the process using the internet**

emphasised in this study. This study has opened doors for further investigation into simulation, real-time implementation and remote monitoring. As this study aimed at exploring requirements to liaise software with hardware, the experimentation has been successful in doing so.



**Fig 8 pH response of the mixture in the CSTR for the disturbances in the influent flow (after 2mins and concentrations (after 1min))**

## REFERENCES

- 1) Shinsky, F.G. 1973. "pH and pION Control in Process and Waste Streams". John Wiley & Sons, New York, USA.
- 2) Pishvaie, M. R. and M. Shahrokhi. 2000. "pH Control using Non-linear Multiple Models, Switching and Tuning Approach." *Ind. Eng. Chem. Res.*, 39, 1311.
- 3) Wright, R. A., M. Soroush and C. Kravaris. 1991. "Strong acid equivalent control of pH processes: An experimental study." *Ind. Eng. Chem. Res.*, 30, 2437.
- 4) Young, G. E. and S. Rao. 1986. "Robust control of a Non-linear Process with System Uncertainty and Delay using Variable Structure," *Proc. Am. Control Conf.*, 1210.
- 5) Parrish, J. R. and C. B. Brosilow. 1988. "Non-linear Inferential Control." *AICHE Journal*, 34, 633.
- 6) Kulkarni, B. D., S. S. Tambe, N. V. Shukla and P. B. Deshpande. 1991. "Non-linear pH Control." *Chem. Eng. Sci.*, 46, 995.
- 7) Li, W. C., L. T. Biegler, C. G. Economou, and M. A. Morari. 1990a. "Constrained Pseudo-Newton Control Strategy for Non-linear Systems." *Comput. Chem. Engg.*, 14, 451.
- 8) Li, W. C. and L. T. Biegler. 1990b. "Newton-type Controllers for Constrained Non-linear Processes with Uncertainty." *Ind. Eng. Chem. Res.*, 29, 1647.
- 9) Jayadeva, B. J., M. Chidambaram and K. P. Madhavan. 1990b. "Robust Control of Batch Reactors." *Chem. Engng. Commun.* 87, 195.

- 10) Jayadeva, B. J., Y. S. N. M. Rao, M. Chidambaram and K. P. Madhavan. 1990a. "Nonlinear Controller for A pH Process." *Computers chem. Engng.*, 14(8), 917.
- 11) Yuocef-Toumi, K. and O. Ito. 1987. "Controller Design for Systems with Unknown Nonlinear Dynamics." Proc. Am. Control Conf. Minneapolis, 836.
- 12) Karnachi, N. N. and Waterworth, G. October, 2003. "Non-linear Model Reference Control of a pH Process: An Experimental Study." 15<sup>th</sup> European Simulation Symposium, Delft, The Netherlands, 430.
- 13) McAvoy, T. J., E. Hsu and S. Lowenthal. 1972. "Dynamics of pH in a Controlled Stirred Tank Reactor." *Ind. Eng. Chem. Process Des. Dev.*, 11(1), 68.