



Mutual information as a measure of reconstruction quality in 3D dynamic lung EIT

DOI:

[10.1088/1742-6596/434/1/012082](https://doi.org/10.1088/1742-6596/434/1/012082)

[Link to publication record in Manchester Research Explorer](#)

Citation for published version (APA):

Crabb, M. G., Davidson, J. L., Little, R., Wright, P., Naish, J. H., Parker, G. J. M., Kikinis, R., McCann, H., & Lionheart, W. R. B. (2013). Mutual information as a measure of reconstruction quality in 3D dynamic lung EIT. In *Journal of Physics: Conference Series* | *J. Phys. Conf. Ser.* (Vol. 434). IOP Publishing Ltd. <https://doi.org/10.1088/1742-6596/434/1/012082>

Published in:

Journal of Physics: Conference Series | *J. Phys. Conf. Ser.*

Citing this paper

Please note that where the full-text provided on Manchester Research Explorer is the Author Accepted Manuscript or Proof version this may differ from the final Published version. If citing, it is advised that you check and use the publisher's definitive version.

General rights

Copyright and moral rights for the publications made accessible in the Research Explorer are retained by the authors and/or other copyright owners and it is a condition of accessing publications that users recognise and abide by the legal requirements associated with these rights.

Takedown policy

If you believe that this document breaches copyright please refer to the University of Manchester's Takedown Procedures [<http://man.ac.uk/04Y6Bo>] or contact uml.scholarlycommunications@manchester.ac.uk providing relevant details, so we can investigate your claim.



Mutual information as a measure of image quality for 3D dynamic lung imaging with EIT

M G Crabb¹, J L Davidson², R Little³, P Wright²,
A R Morgan³, C A Miller³, J H Naish³, G J M Parker³,
R Kikinis⁴, H McCann^{2,5} and W R B Lionheart¹

¹ School of Mathematics, University of Manchester, UK

² School of Electrical and Electronic Engineering, University of Manchester, UK

³ Centre for Imaging Sciences, Biomedical Imaging Institute,
University of Manchester, UK

⁴ Surgical Planning Laboratory, Brigham and Women's Hospital,
Harvard Medical School, Boston, USA

E-mail: Michael.Crabb@manchester.ac.uk

Received 25 October 2013, revised 11 February 2014

Accepted for publication 14 March 2014

Published DD MMM 2014

Abstract

We report on a pilot study of dynamic lung electrical impedance tomography (EIT) at the University of Manchester. Low-noise EIT data at 100 frames per second were obtained from healthy male subjects during controlled breathing, followed by magnetic resonance imaging (MRI) subsequently used for spatial validation of the EIT reconstruction. The torso surface in the MR image and electrode positions obtained using MRI fiducial markers informed the construction of a 3D finite element model extruded along the caudal-distal axis of the subject. Small changes in the boundary that occur during respiration were accounted for by incorporating the sensitivity with respect to boundary shape into a robust temporal difference reconstruction algorithm. EIT and MRI images were co-registered using the open source medical imaging software, 3D Slicer. A quantitative comparison of quality of different EIT reconstructions was achieved through calculation of the mutual information with a lung-segmented MR image. EIT reconstructions using a linear shape correction algorithm reduced boundary image artefacts, yielding better contrast of the lungs, and

⁵ Present address: School of Engineering, University of Edinburgh, UK.



Content from this work may be used under the terms of the [Creative Commons Attribution 3.0 licence](https://creativecommons.org/licenses/by/3.0/). Any further distribution of this work must maintain attribution to the author(s) and the title of the work, journal citation and DOI.

had 10% greater mutual information compared with a standard linear EIT reconstruction.

Keywords: 3D lung EIT, MRI, mutual information, image co-registration

(Some figures may appear in colour only in the online journal)

Q1

1. Introduction

Electrical impedance tomography (EIT) is a non-invasive technique that aims to reconstruct the internal conductivity distribution of a given subject from electrical measurements obtained on the periphery. Since the development of the technique in the early 1980s by Barber and Brown (1984), there has been widespread interest in the clinical application of thoracic EIT. Several review articles by Muders *et al* (2010), Bodenstein *et al* (2009), Costa *et al* (2009a), Adler *et al* (2012), Lundin and Stenqvist (2012), Frerichs (2000) provide the reader with the current status of clinical activity and also detail the broad spectrum of specific thoracic EIT application areas. Applications include the assessment of pulmonary ventilation (Frerichs 2000, Zhao *et al* 2010), lung perfusion (Frerichs *et al* 2009), pulmonary oedema (Kunst *et al* 1999), emphysema (Smit *et al* 2003) and lung injury (Hinz *et al* 2007). These studies demonstrate that thoracic EIT promises to become a routine bedside monitoring tool for critically ill patients who undergo mechanical ventilation, and is already beginning to play an important role in optimizing ventilator settings for such patients.

The majority of EIT image reconstruction systems, however, still do not exhibit a consistent level of performance across different patients, or for the same patient at different data acquisition times. This is clearly an essential ingredient for the technique to gain credibility across the medical community as a bedside monitoring tool. A major contributing factor behind poor reproducibility is a result of inadequate modelling approximations that are used in the reconstruction algorithm. Additionally, virtually all EIT systems still deploy a single ring of 16 electrodes placed on a transverse plane around the thorax and perform reconstructions onto a 2D transverse slice, and operate at a modest 40 fps (a single frame corresponds to collection of all measurements for a specific protocol.) Physically, current cannot be constrained to lie in the 2D plane, and mathematically the potential from a point current source has different decay rates in 2D and 3D (Lionheart 1999). Inaccurately known boundary shape and electrode positions are also known to result in major artefacts in image reconstruction (Adler *et al* 2006, Zhang and Patterson 2005, Lionheart 1998). Many EIT systems assume the boundary shape is circular, elliptical, or at best a generic thorax shape, which can be a rather crude approximation to a genuine thorax cross section. The difficulty of obtaining a sufficiently accurate approximation to the shape is amplified for temporal reconstructions. During respiration the expansion and contraction of the rib cage causes the displacement of thoracic tissues, the external shape and the attached electrodes. This movement creates EIT measurements which appear spurious, with the measured voltage signals often being dominated by movement effects and not the underlying tissue conductivity changes. This effect can result in large boundary artefacts in reconstructed images if such measurement data are used on a static geometrical model which can render the overall reconstruction meaningless.

A crucial step towards EIT reproducibility is to perform a quantitative assessment of the spatial resolution obtainable for different EIT reconstruction algorithms and to compare EIT with complementary imaging modalities. The spatial resolution of EIT has been assessed in several experimental and clinical studies involving spontaneous and artificial ventilation

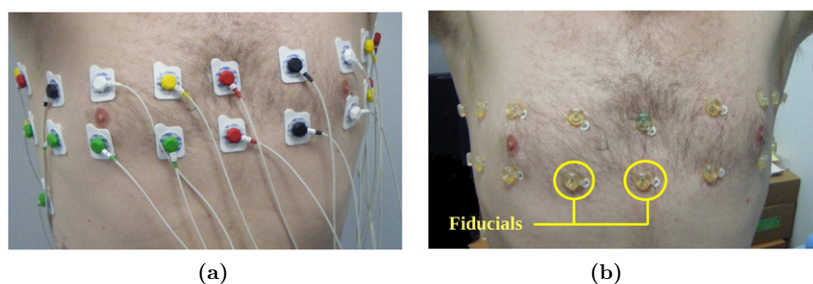


Figure 1. Electrode arrays; (a) electrodes attached during EIT data acquisition and (b) MRI fiducial markers to inform electrode positions.

against well established imaging techniques e.g. x-ray computed tomography (CT), positron emission tomography and single photon emission CT (Victorino *et al* 2004, Costa *et al* 2009b, Kunst *et al* 1998, Richard *et al* 2009, Hinz *et al* 2003, Frerichs *et al* 2002). However, none of these studies have made direct comparisons, or quantitative assessments, of the spatial accuracy of EIT with a second high resolution modality using image co-registration and mutual information as we will present here.

The aim of this paper is to systematically address the problems associated with image reproducibility outlined above, by describing a methodology for 3D thoracic EIT reconstruction. We report on a study at the University of Manchester involving two healthy subjects who had MR scans in the supine position, in addition to EIT data acquired with the Manchester fEITER system (McCann *et al* 2011) in the supine and seated positions. Potential reconstruction artefacts associated with inaccurate model dimension, boundary shape and electrode positions are addressed by using an MR image of the subject to inform the external shape of a 3D EIT reconstruction model of the thorax. Similarly, magnetic resonance imaging (MRI) fiducial markers placed at the electrode positions aided electrode positioning within the model. Small changes in the boundary and electrode positions during the breathing cycle are addressed by calculating the sensitivity of the EIT forward model with respect to the boundary shape, and incorporating this into a robust 3D temporal difference image reconstruction algorithm. Qualitative comparisons are made between the spatial resolution obtained using both the standard and boundary movement difference reconstruction algorithms on the MRI-informed reconstruction model, via co-registration with the original MR image. We also implement a simple and novel performance criterion which enables a quantitative measure of EIT reconstruction quality by calculating the mutual information of the EIT images with a lung-segmented MR image of the subject, as discussed in section 2.4.

2. Methods

2.1. EIT and MRI data acquisition

An array of 32 electrodes was arranged on the subject as two transverse planes of 16 electrodes equidistantly spaced around the chest at approximately the fourth and sixth intercostal spaces, along with an abdominal reference electrode, as illustrated in figure 1. EIT measurements were acquired using the EIT sub-system of the biomedical fEITER instrument (McCann *et al* 2011), which offers not only a high signal-to-noise ratio approaching 80 dB on bench-top phantoms, but has also been designed to meet the IEC 60601-1 patient safety requirements. In this study, a nearest-neighbour current injection protocol was used with a total of 20 current

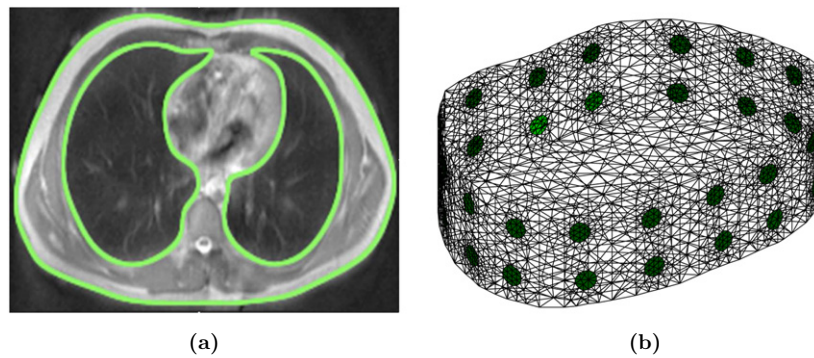


Figure 2. FE model generation; (a) segmented MR slice with thorax and lung shapes highlighted and (b) extruded '2.5D' FE model generated in EIDORS.

patterns which included eight independent horizontal injections per transverse electrode plane. Sinusoidal current injections of 0.5 mA amplitude at 10 kHz frequency were input and the EIT instrument recorded nearest-neighbour voltage pairs at 100 fps. EIT data were recorded whilst the subject carried out basic breathing procedures in 1 min blocks. Breathing procedures involved normal and progressively deeper tidal breathing regimes interspaced with reference conditions of typically 5 s breath-holds at both inspiration and expiration. MRI fiducial markers were substituted for the EIT electrodes at all electrode locations immediately after the last EIT data collection, before carrying out an MRI scan using a T2-weighted half-Fourier acquired single-shot turbo spin-echo (HASTE) protocol on a 1.5 T Philips Achieva scanner (Philips Healthcare, Best, the Netherlands) under the same breathing procedures as used during the EIT tests. The MR scans consisted of 1 cm thick contiguous axial slices, which were cardiac gated and tuned for the conditions of normal breath-holding, at maximum inspiration and expiration. The whole procedure was approved by the local ethics committee and the subjects gave written, informed consent.

2.2. Finite element modelling of the human torso

The external boundary shape of the subject was obtained from a transverse MR image slice at the fifth intercostal spacing at a breath-hold at maximum inspiration. The contour of the external shape was defined by 50 equispaced points and the contour of each lung by approximately 25 equispaced points. A 3D finite element (FE) forward model extruded along the caudal-distal axis was then generated using EIDORS 3.6 (Adler and Lionheart 2006⁶) calling the Netgen mesh generator (Schöberl 1997). Ider *et al* (1990) have previously performed a mathematical analysis of extruded models with a single transverse plane of electrodes. The present methodology is an extension of their approach because multiple planes of electrodes can be incorporated into the model. The method of extrusion has been applied to swine data as described by Grychtol *et al* (2011). The FE forward model consisted of 32 electrodes with typically 20 000 tetrahedral elements and 5000 vertices, modelled to a depth of 10 cm. The transverse MR image slice and surface mesh of a typical forward model is shown in figure 2. All electrodes were modelled to a diameter of 1 cm, which is consistent with those applied to the subject. A high mesh density was chosen in the vicinity of each electrode where the electric field is largest. The lungs segmented from the MR image were also included in the forward model and used as prior information in the forward problem. A 3D FE model was generated

⁶ The library function `ng_mk_extruded_model.m`

with the same boundary shape as the forward model, but with no electrodes and a lower mesh density, for the reconstruction problem. A reconstruction model typically consisted of 10 000 tetrahedral elements and 2500 vertices. From the forward and reconstruction models a mapping matrix was generated to transform between the coarse and fine discretizations, as described by Adler *et al* (2008), allowing one to solve the forward problem sufficiently accurately on the fine model as well as representing the reconstructed conductivity on the coarse model.

2.3. Image reconstruction with shape corrections

As previously discussed, a major source of artefacts in thoracic EIT reconstructions is due to an inaccurately known boundary shape. Given full knowledge of the Neumann-to-Dirichlet (NtD) on the true domain, with conductivity assumed *a priori* to be isotropic, it was shown by Lionheart (1998) that the data measured on the true domain will only be consistent with an isotropic conductivity in the model domain if the true domain and model domain are related by a conformal map. Reconstruction algorithms have been proposed that rely on the conformal structure of a deformed conductivity. It has been shown by Kolehmainen *et al* (2013), that the shape and conductivity in 2D can be determined using techniques from quasi-conformal maps and minimally anisotropic conductivities. Lastly, it has been shown by Kolehmainen *et al* (2007) that the shape and conductivity of an isotropic conductivity in 3D can be determined up to a rigid motion. Specifically, when the metric corresponding to an isotropic conductivity is pushed forward by a domain distortion it is conformally flat and this is equivalent to the vanishing of the Cotton–York tensor. A reconstruction algorithm including a penalty term on this tensor has been proposed.

Alternative reconstruction algorithms to estimate the shape and conductivity from knowledge of the NtD map have recently been proposed in the literature. Firstly, a Bayesian approximation error approach has been proposed by Nissinen *et al* (2011) to reconstruct the conductivity and a low rank estimate of the shape. This approach treats all sources of modelling error such as the FE discretization and the boundary shape, but not the unknown conductivity, as ‘nuisance’ parameters. The modelling error covariance is estimated from an ensemble of 150 CT images of thorax shapes and this covariance is then incorporated into a standard regularized Gauss–Newton method to reconstruct the conductivity. Secondly it has been shown by Dardé *et al* (2013) that the forward operator $F(h)$, now operating on a C^1 perturbation of the boundary given by a function h , with σ fixed, is also Fréchet differentiable at the origin. That is, given $h \in C^1(\partial\Omega, \mathbb{R}^3)$, and let $D_h(x) = x + h(x)$, $x \in \partial\Omega$, represent a perturbation of the boundary, then $F(h) = F(0) + F'_0 h + O(\|h\|_{C^1(\partial\Omega, \mathbb{R}^3)}^2)$ and an explicit form for the derivative operator, F'_0 , is calculated. The weak formulation for the derivative falls just short of the conventional H^1 Sobolev space desired for a FE method, but a dual formulation is derived and a sampling method proposed to estimate the derivative and an iterative algorithm outlined to estimate the shape and conductivity distribution.

The approach outlined here is to calculate the Gâteaux derivative of the forward problem with respect to the boundary shape at the electrodes, leaving the rest of the boundary fixed. This method could equally be applied to other boundary locations, but since the largest sensitivity of measured data to shape changes will be at the electrodes, we only calculate this at the electrode positions. In effect we are assuming the shape has been sufficiently well approximated from the MR image and are only accounting for small corrections from electrode movement due to breathing. We denote the domain $\Omega \subset \mathbb{R}^3$ with boundary $\partial\Omega$, and the isotropic, real and positive conductivity $\sigma : \Omega \rightarrow \mathbb{R}^+$. The boundary has L well separated electrodes, $E_l \subset \partial\Omega$, $l = 1 : L$, attached with centre of mass positions $v_l \in \mathbb{R}^3$. We consider a prescribed electrode current vector, $I = [I_l]_{l=1}^L$, with $\sum_l I_l = 0$, with the resulting electrode potential vector,

$U = [U_l]_{l=1}^L$, and internal potential u (defined up to a constant). Let $z = [z_l]_{l=1}^L \geq 0$, denote the vector of contact impedances present at the electrode-domain interfaces. A finite difference method on the FEM formulation of the forward problem is used, and an approximate derivative with respect to electrode movement, $J^m : \mathbb{R}^{3L} \rightarrow \mathbb{R}^m$, is calculated, which can be considered as the first partial derivative of the forward problem with respect to each coordinate of each electrode (Soleimani *et al* 2006, Crabb *et al* 2012). To calculate this derivative we need some modelling assumptions on the behaviour of electrode movement. Firstly, the shape of the electrode can conceivably deform as it moves along the boundary if flexible ‘elastic’ electrodes were used. We use an identical perturbation for each node of a given electrode and so we are assuming the electrodes move along the boundary rigidly without changing shape. Secondly, to calculate the normal component of electrode movement in the finite difference approximation, a small piece of conductivity has to be added under each electrode. We assume the conductivity is constant in a neighbourhood of the electrode, and so the conductivity of the small additional piece of tissue added is the same as under the unperturbed electrode. The GREIT reconstruction algorithm (Adler *et al* 2009), engineered for 2D linear reconstructions, includes a variation on the algorithm discussed in this section to compensate for electrode movement. The array of 32 electrodes, and flexible current injection capability of the fEITER system, allow us to explore the effectiveness of 2.5D reconstructions.

Denote the forward operator $F_{\sigma,v} : \mathbb{R}^L \rightarrow \mathbb{R}^L/\mathbb{R}$, mapping a given current pattern applied to the electrodes to the measured voltages on the electrodes. The vector of measured voltages over all current patterns can then be written as $\mathbf{V} = Z_l F_{\sigma,v} I$, where $Z \in \mathbb{R}^{m \times L}$ is a linear measurement operator mapping the boundary voltages over all current patterns, $I \in \mathbb{R}^L$, to the specific measurement protocol. The forward problem is modelled through the complete electrode model, considered the most physically accurate forward model for EIT (Somersalo *et al* 1992). We discretize the domain into N elements and V nodes and choose a piecewise constant and piecewise linear basis to represent the conductivity and interior potential respectively. The conventional EIT reconstruction problem is to determine σ stably from knowledge of \mathbf{V} . It is well known that the forward problem in EIT is Fréchet differentiable with respect to L^∞ conductivity perturbations (Kaipio *et al* 2000). If there are a total of m measurements over all input current stimulations, and using a piecewise constant representation of the conductivity, the Fréchet derivative simplifies to a Jacobian matrix $J^c : \mathbb{R}^N \rightarrow \mathbb{R}^m$, readily calculated via a piecewise linear FEM (see Polydorides (2002) for details.) The forward problem can now be linearized through a Taylor series expansion as

$$\mathbf{V}_{\sigma+\delta\sigma, \mathbf{v}+\delta\mathbf{v}} = \mathbf{V}_{\sigma, \mathbf{v}} + J_{\sigma, \sigma}^c(\delta\sigma) + J_{\mathbf{v}, \sigma}^m(\delta\mathbf{v}) + O(\|(\delta\sigma, \delta\mathbf{v})\|^2), \quad (1)$$

where $\|(\sigma, v)\| := \|\sigma\|_\infty + \|v\|_\infty$. The estimation of conductivity and electrode positions $\mathbf{x} := (\sigma, v)$ from the data is approached from a probabilistic viewpoint. The voltages are assumed to be related by $\mathbf{V} = Z_l F(\sigma, v)I + n$, where $n \in \mathbb{R}^m$ represents the measurement channel noise. We assume mean zero Gaussian noise with covariance matrix $\Gamma_e \in \mathbb{R}^{m \times m}$ and a Gaussian smoothness prior on the conductivity and electrode positions, with covariance matrix $\Gamma_{\sigma, \mathbf{v}} \in \mathbb{R}^{3L+N \times 3L+N}$ and mean $\mathbf{x}_r := (\sigma_r, v_r)$. The measurement noise is also assumed to be independent and identically distributed (i.i.d) and the conductivity and electrode position changes are assumed to be independent from one another and separately i.i.d. These assumptions imply that $\Gamma_e^{-1} = I \in \mathbb{R}^{m \times m}$ and $\Gamma_{\sigma, \mathbf{v}}^{-1}$ is a diagonal matrix with entries $\Gamma_{\sigma, \mathbf{v}}^{-1}(i, i) = \alpha^2$ if $i \leq N$ and $\Gamma_{\sigma, \mathbf{v}}^{-1}(i, i) = \beta^2$ if $N < i \leq N + 3L$. Physically α and β can be interpreted as the ratios of expected changes of conductivity and electrode position to the measurement noise standard deviation.

The maximum *a posteriori* (MAP) estimate of \mathbf{x}^i , at the i th temporal data frame, \mathbf{V}_i , is equivalent to

$$\mathbf{x}_i = \arg \min_{\mathbf{y}} \{ (Z_I F(\mathbf{y})I - \mathbf{V}_i)^T \Gamma_e^{-1} (Z_I F(\mathbf{y})I - \mathbf{V}_i) + (\mathbf{y} - \mathbf{x}_r)^T \Gamma_{\sigma,v}^{-1} (\mathbf{y} - \mathbf{x}_r) \}. \quad (2)$$

The minimizer of the functional is approached via a linearized Gauss–Newton method to compute an update $\mathbf{x}_i^{(1)}$ at the i th measured temporal data frame. The initial guess is chosen here as the prior distribution, \mathbf{x}_r , and we denote $\mathbf{V}_r = Z_I F(\mathbf{x}_r)I$ and $\delta \mathbf{V}_{ir} = \mathbf{V}_i - \mathbf{V}_r$. The gradient, $\mathbf{g}_{ri} \in \mathbb{R}^{N+3L}$, of the functional (2), at the point \mathbf{x}_r and i th temporal data frame is

$$\mathbf{g}_{ri} = 2[J^c(\mathbf{x}_r)|J^m(\mathbf{x}_r)]^T \delta \mathbf{V}_{ir} =: 2J_r^T \delta \mathbf{V}_{ir}. \quad (3)$$

The Gauss–Newton method assumes all second order partial derivatives of forward problem F_i with respect to σ and v can be neglected. This, and the assumption that the prior covariance matrix is diagonal, allows us to write the Hessian matrix, $H_r \in \mathbb{R}^{N+3L \times N+3L}$, of the functional (2) at the point \mathbf{x}_r , as a 2×2 block matrix of the form

$$H_r = 2 \begin{bmatrix} J^c(\mathbf{x}_r)^T J^c(\mathbf{x}_r) + \alpha^2 I & J^c(\mathbf{x}_r)^T J^m(\mathbf{x}_r) \\ J^m(\mathbf{x}_r)^T J^c(\mathbf{x}_r) & J^m(\mathbf{x}_r)^T J^m(\mathbf{x}_r) + \beta^2 I \end{bmatrix} \quad (4)$$

The first update of the Gauss–Newton scheme is then

$$\mathbf{x}_i^{(1)} = \mathbf{x}_r - \tau^{(1)} H_r^{-1} \mathbf{g}_{ri}, \quad (5)$$

where $\tau^{(1)}$ is a linesearch parameter. We are only interested in the linearized difference between two data frames \mathbf{V}_i and \mathbf{V}_j , and so just set $\tau^{(1)} = 1$. The linearized reconstruction, $\delta \mathbf{x}_{ij}$, between two data frames \mathbf{V}_i and \mathbf{V}_j is then

$$\delta \mathbf{x}_{ij} := \mathbf{x}_i^{(1)} - \mathbf{x}_j^{(1)} = -H_r^{-1} J_r^T (\mathbf{V}_i - \mathbf{V}_j). \quad (6)$$

This solution was computed in EIDORS via the following procedure. Firstly the extruded mesh was generated as described previously and a constant conductivity assigned to the model. Simulated boundary voltages were acquired from this model using the same measurement protocol as the experiment, and in order to get a consistent scaling between the simulated and measured voltages, V_s and V_m respectively, a best fit homogeneous reference conductivity, σ_r , was computed using a formula derived by Kaipio *et al* (2000). The prior information of the lungs was then included by assigning the conductivity in the lung regions as $0.3\sigma_r$. Using this reference conductivity the movement Jacobian, J^m , was calculated in EIDORS 3.6⁷ along with the standard conductivity Jacobian, J^c , using the default Jacobian function⁸. Image reconstructions were performed using two linear difference imaging methods. Firstly, using the described shape derivative method and secondly, a standard EIDORS method using a one-step linearized Gauss–Newton technique with standard Tikhonov regularization. In the following section we discuss how optimal regularization parameters α and β have been chosen using a mutual information technique.

2.4. EIT-MR image co-registration and mutual information

In this section we describe the EIT and MR image co-registration process, and the method used to calculate the mutual information between the EIT and MR images. The image co-registration process and mutual information calculation provides both a qualitative and quantitative measure of EIT reconstruction performance. Although mutual information techniques have been used in previous multimodal imaging studies (see Plum *et al* (2003) for a review) such techniques have yet to be applied in the area of lung imaging using EIT.

⁷ The library function `jacobian_movement_perturb.m`

⁸ The library function `jacobian_adjoint.m`

The Manchester Confeitir software (McCormick *et al* 2007) was used to convert the reconstructed EIT data from the irregular tetrahedral mesh into a matrix with 2 mm-cubic isotropic voxels each representing a conductivity change and the coordinates of each voxel were then transformed so that they were in the same space as the MRI data. The software efficiently identifies the tetrahedron whose centroid is closest to the centre of any given voxel. Additionally, the application of a small threshold to the EIT data aided improved clarity of the subsequent visualizations. This typically involved discarding 5% of extreme points from the visualization. The EIT images were transformed to the Nifti data format for subsequent importing into 3D Slicer (Pieper *et al* 2004). The MRI data were imported into 3D Slicer separately and co-registered using methods validated with bench-top phantoms by Davidson *et al* (2012). This involved marking up a set of control points around the outside of the torso on both the EIT and MRI data using the fiducial registration module of 3D Slicer, followed by least squared minimization of the distance between the two sets of data in space.

We denote two images A and B , each with N cubic voxels, and each voxel having a positive greyscale value. The probability distribution of A , $p_A(a)$, is defined as the number of voxels in image A that have pixel value a , normalized by N . The joint probability distribution of A and B , denoted $p_{A,B}(a, b)$, is then calculated as the number of times out of N that pixel in A contains a and the same pixel in B contains b normalized by N . The Shannon entropy, in the imaging context, is a measure of the information content of an image, measured in *bits*. The information content of a single event, that is a particular greyscale value of an image, is proportional to the log of the inverse of the probability of an event. The total information content of an image, or entropy, is the information content of a single event, weighted by the probability that the event occurs, summed over all events. The total entropy of A , and the joint entropy of A and B , are thus expressed as

$$\begin{aligned} H_A &= - \sum_a p_A(a) \log(p_A(a)), \\ H_{A,B} &= - \sum_a \sum_b p_{A,B}(a, b) \log(p_{A,B}(a, b)), \end{aligned} \quad (7)$$

respectively. The mutual information of A and B , $I_{A,B}$, is defined as the total entropy of A and B minus the joint entropy, $I_{A,B} = H_A + H_B - H_{A,B}$, which equates to

$$I_{A,B} = \sum_a \sum_b p_{A,B}(a, b) \log \frac{p_{A,B}(a, b)}{p_A(a)p_B(b)}. \quad (8)$$

It can be shown that $0 \leq H_A \leq \log(N)$, where $H_A = 0$ when the image conveys no information i.e. it is featureless or homogeneous, and $H_A = \log(N)$ for white noise. It is also true that $0 \leq I_{A,B} \leq H_A$, where $I_{A,B} = 0$ when A and B have no features in common and $I_{A,B} = H_A = H_B = H_{A,B}$ when A and B are the same. Thus, the larger the mutual information between two images, the more similarities the two images share.

To calculate the mutual information, a threshold is first applied to the MR image to generate a binary image representing just lungs and chest, similar to the segmentation show in figure 2(a). The intensity values of the cubic voxel based EIT image are then scaled linearly so they lie within the same range as the binary MR image. Both images have a finite number of voxels, and the probabilities in (7) are interpreted as histograms with 256 equispaced bins. If a bin is empty, $0 \times \log(0)$ is interpreted as 0. The MR and EIT images are both sampled at their voxel centres to estimate H_A , H_B and $H_{A,B}$, and hence $I_{A,B}$ via (8). This calculation is therefore solely measuring how well a linearized EIT reconstruction is able to find the *overall shape* of the lungs. We perform the mutual information calculation over a range of regularization parameters, (α, β) , for both a standard ($\beta = 0$) and shape corrected reconstruction algorithm.

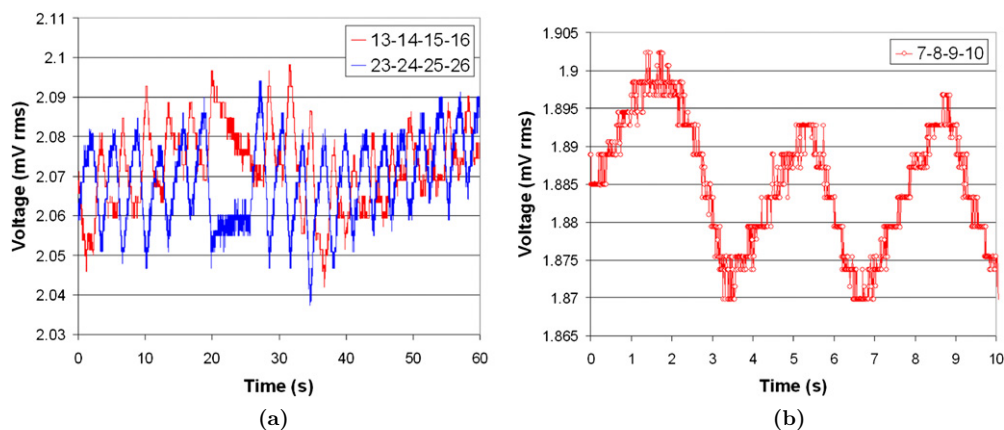


Figure 3. Voltage measurement sites for a seated subject; (a) two diametrically opposed sites with large breathing signal and (b) higher temporal resolution of large breathing signal.

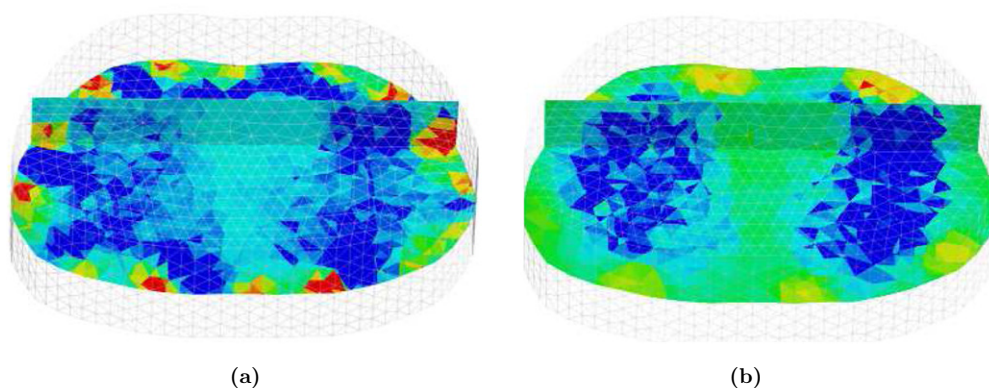


Figure 4. Reconstructions in 3D rendered in MayaVi software (Ramachandran 2001); (a) and (b) are conductivity changes at max inhalation for a standard and shape corrected reconstruction respectively. The front of the chest is in the background, and transverse and coronal scalar-cut planes are shown within the 3D volume.

This effectively results in a numerical parameter study to maximize the mutual information between MRI and EIT as a function of the parameters α and β .

3. Results and discussion

3.1. Typical raw EIT measurements

Figure 3(a) shows typical voltage measurement data for two measurement sites, where $i-j-k-l$ means current injection between electrodes i and j , and voltage measurement between electrodes k and l ; site 13-14-15-16 refers to voltages at an anterior right-hand side (RHS) location at the fourth intercostal space, whilst site 23-24-25-26 refers to a posterior left-hand side (LHS) location at the sixth intercostal space. The effect of a brief breath-hold at approximately $t = 20$ s can be clearly seen along with periodic changes consistent with the

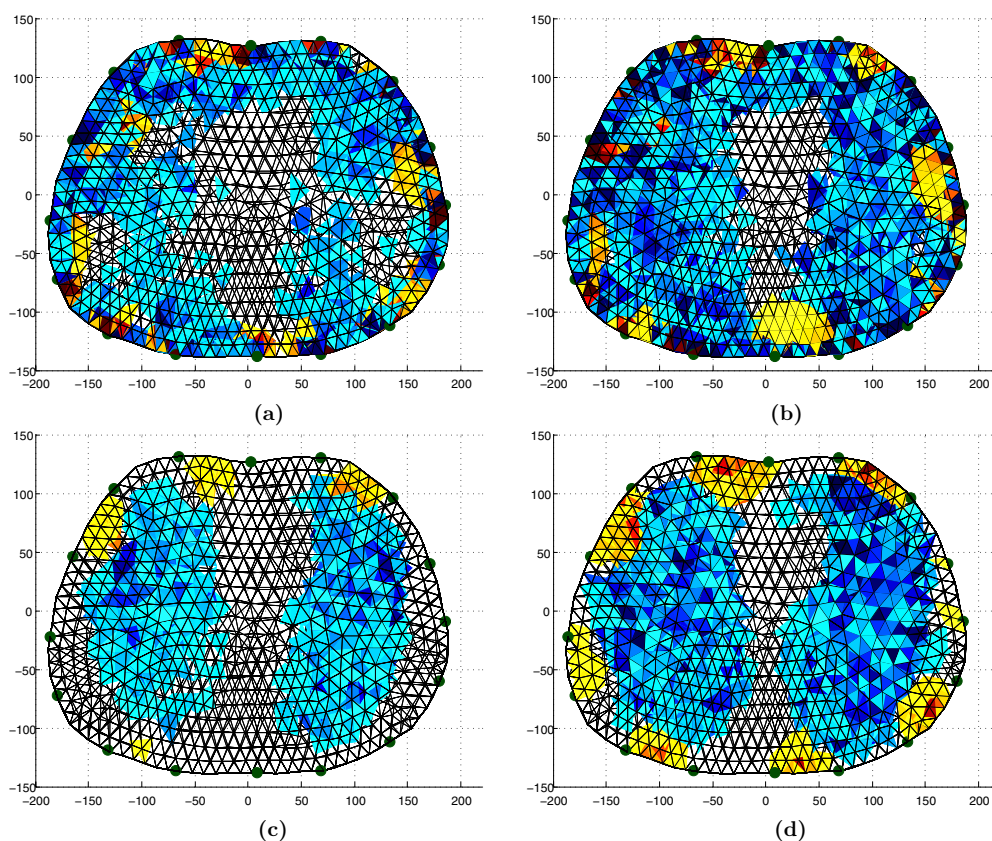


Figure 5. Image reconstructions viewed down the caudal-distal axis. Left and right: mid inhalation ($t = 1.50$ s) and max inhalation ($t = 3.00$ s). Top and bottom: standard algorithm and shape correction algorithm. (a) Standard method at $t = 1.50$ s. (b) Standard method at $t = 3.00$ s. (c) Shape correction at $t = 1.50$ s. (d) Shape correction at $t = 3.00$ s.

breathing rate of the subject. Additionally, the significant differences in the phase of the voltage changes for the two different sites suggests spatial differences of the underlying conductivity distribution within the lungs. Figure 3(b) illustrates raw measurement data from a fourth intercostal LHS posterior site (7-8-9-10) over a 10 s period with data points marked every 10 ms. The observations illustrate the excellent low-noise characteristics ($<6 \mu\text{V}$ rms in recorded human lung data) of the raw human EIT data from the fEITER system at 100 fps. (Note that, despite its visual prominence, the approximate $1.5 \mu\text{V}$ rms quantization noise level evident in figure 3(b) contributes less than 10% of the total noise power.)

3.2. Comparison of standard and shape correction algorithms

Figures 4 and 5 are typical of the 3D EIT image reconstructions acquired at 100 fps using the fEITER system. All images displayed in this paper are difference images relative to a maximum exhalation data frame, and blue and red indicate negative and positive conductivity changes respectively. Figures 4(a) and (b) illustrate difference images for a subject sitting upright at maximum (max) inhalation with the standard and shape correction reconstruction

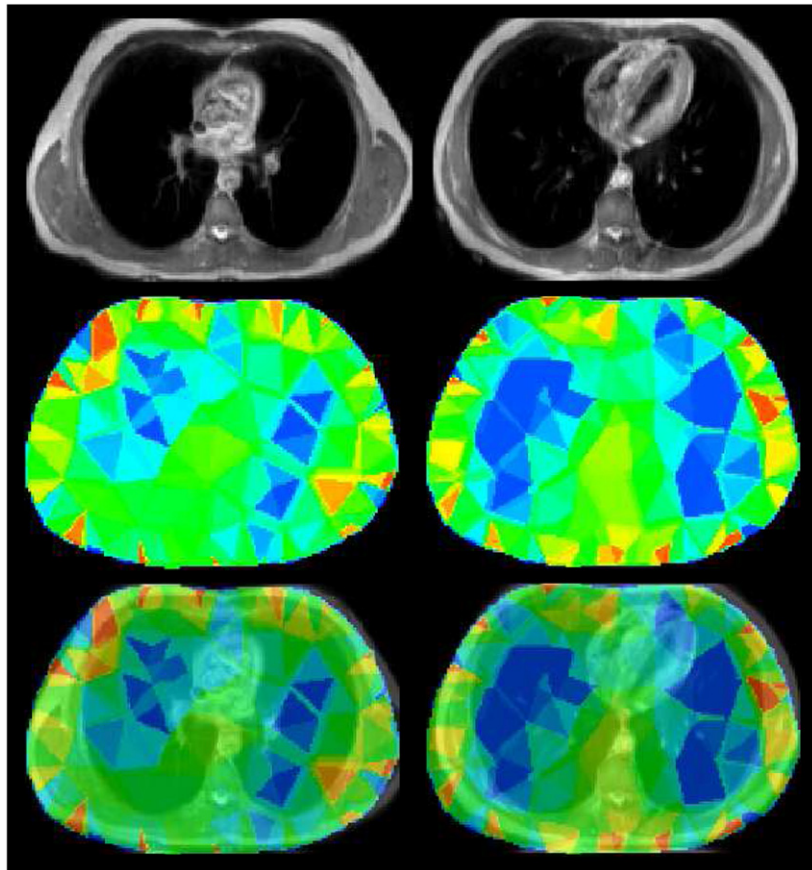


Figure 6. MRI and EIT image co-registration. Left to right columns: superior and inferior transverse planes. Top to bottom rows: MRI image, EIT image and co-registered EIT and MRI images at the transverse slice.

algorithms respectively. It can be clearly seen that the shape correction algorithm yields fewer boundary artefacts and sharper contrast between the lungs and background compared with the standard algorithm. These effects are also clearly visible in the 2D slices from the 3D image reconstructions for a second data set shown in figure 5. Figures 5(a) and (b) correspond to the standard method, $\alpha = 10^{-2}$, and the bottom figures 5(c) and (d) correspond to the perturbed method, $(\alpha, \beta) = (10^{-2}, 4 \times 10^{-2})$. Compensating for movement results in largely lateral changes in the electrode positions as well as a large reduction in boundary artefacts. This is promising as we do not expect any physiological mechanisms to produce large conductivities changes near the boundary.

3.3. EIT-MR image co-registration and mutual information

Figure 6 shows an image co-registration example of MRI and EIT using 3D Slicer, for the subject in the sitting position at maximum inhalation. The left and right column are superior and inferior transverse planes respectively. The top row is the original MR image, the middle row the EIT reconstruction and the bottom row is the resultant image co-registration. From the images, it can be seen that the EIT reconstruction typically underestimates the physiological

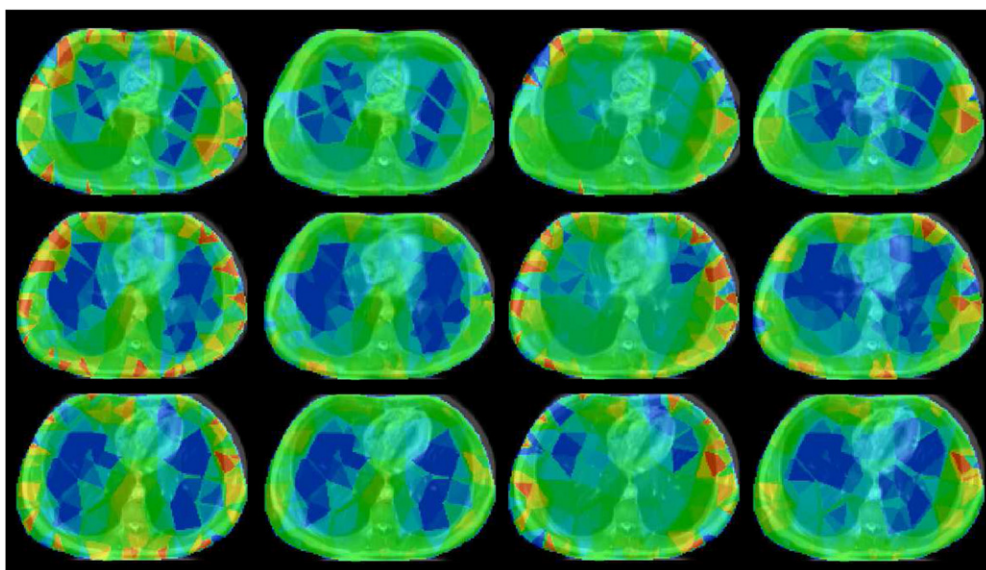


Figure 7. MRI and EIT image co-registration. Left to right columns: sitting standard reconstruction, sitting shape correction reconstruction, supine standard reconstruction and supine shape correction reconstruction. Top to bottom rows: transverse slices from superior to inferior.

size of the actual cross-sectional areas of the lung. Inspection of the complete 3D data along the caudal-distal axis showed this to be true for the entire scanned lung volume.

Another observation to note is that the conductivity distribution exhibits a significant twisting effect in the superior transverse slice consistent with the 2D linear image reconstructions obtained by Bikker *et al* (2011) using the Dräger system. This is likely to be an artefact resulting from the inadequacies of the simple 2.5D extruded model used in the reconstruction. These inadequacies include the lack of inclusion of the heart in the model and possibly the model cut-off height along the caudal-distal axis being too small.

Figure 7 shows EIT and MRI co-registration examples for the subject in the seated and supine positions for the two reconstruction algorithms. The images clearly show that the shape correction algorithm decreases the boundary artefacts, and the EIT reconstructions again are typically found to underestimate the total lung volume. The shape correction algorithm also has an increased tolerance to positional changes of the subject in the supine position. Additionally, moving towards the superior position, the reconstructed lung regions tend to decrease in contrast to that of inferior slices, and we believe this could be due to the natural tapering of the lungs as we move in a superior direction. Three-dimensional ‘image fusion’ video clips created in 3D Slicer show that the shape correction algorithm provides a more physiologically meaningful reconstruction compared with the standard algorithm for all the data along the caudal-distal axis.

Figure 8 shows the mutual information with a lung-segmented MR image as a function of the parameter α , for the shape corrected and standard reconstruction in both the sitting and supine positions at maximum inspiration. For comparison, the maximum possible mutual information, that is the mutual information of the lung-segmented MR image with itself, was 1.51 bits. From figure 8 it can be seen for the subject in the sitting position, there is a maximum of mutual information at approximately 1.11 bits for the standard reconstruction

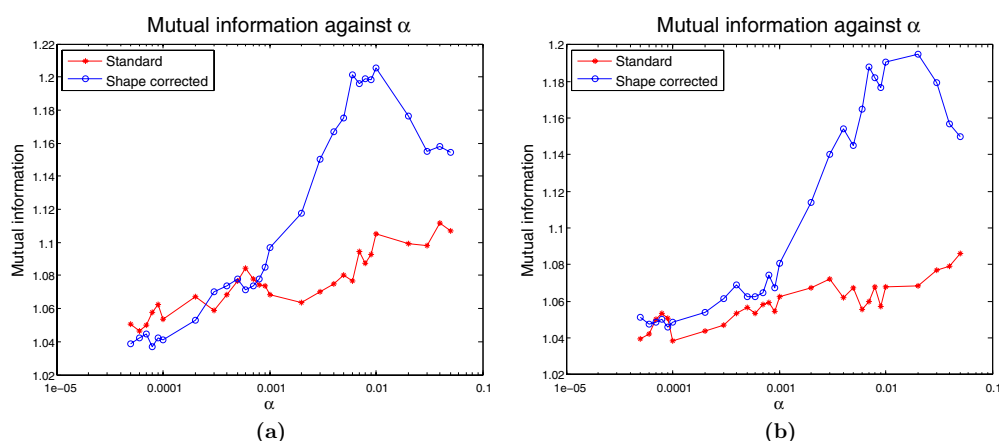


Figure 8. Mutual information parameter study as a function of α ; (a) and (b) are for the subject in the sitting and supine position respectively with a shape corrected ($\beta = 4 \times 10^{-2}$) and standard ($\beta = 0$) reconstruction.

algorithm, with $\alpha = 3 \times 10^{-2}$, and 1.21 bits for the shape corrected reconstruction, with $(\alpha, \beta) = (10^{-2}, 4 \times 10^{-2})$. In the supine position, there is a maximum of mutual information of approximately 1.09 bits for the standard reconstruction algorithm, with $\alpha = 3 \times 10^{-2}$, and 1.20 bits for the shape corrected reconstruction algorithm, with $(\alpha, \beta) = (2 \times 10^{-2}, 4 \times 10^{-2})$. This corresponds to an approximate 10% increase in the maximal mutual information with the shape correction algorithm. It can also be seen at this particular value of β that the shape corrected reconstruction generally has increased mutual information with the standard reconstruction over a wide range of α . The increase in mutual information from a standard to shape correction reconstruction is also visually evident in the images of figures 4 and 5 (which are reconstructions at (α, β) corresponding to the maximum mutual information), when compared to figure 2(a).

4. Conclusions and future work

This paper demonstrates results of 3D EIT dynamic lung imaging at Manchester using an array of 32 electrodes with the fEITER system. The implemented shape correction algorithm explicitly accounts for small changes in the boundary shape which occur when the subject breathes. This novel algorithm yields a reduction of boundary artefacts and improved contrast of the lungs when compared to a standard reconstruction algorithm without shape correction. The co-registration process and the use of a mutual information performance criterion presented here provides an effective and practical method of directly comparing the spatial fidelity of EIT images with those obtained from MRI. The shape correction algorithm increased the maximum mutual information with a lung-segmented MR image by approximately 10% for both a subject in the sitting and supine positions and we believe this is the first time mutual information has been used to assess the quality of lung EIT reconstructions. Our findings suggest that shape correction would be a valuable enhancement to the reconstruction algorithms used in existing commercial EIT instruments applied to lung imaging, such as the PulmoVista[®] 500 system, developed by Dräger (Teschner and Imhoff).

Previous multiple electrode plane studies, such as those by Nebuya *et al* (2006), Bikker *et al* (2011), have typically only used successive EIT data collection at different electrode planes of the chest, resulting in 2D reconstructions of each plane, at low frame rates. One notable

exception to this trend is the tomography systems of the Rensselaer group (Cook *et al* 1994, Saulnier *et al* 2007) which have previously provided 3D lung and pulmonary images, albeit using only generic reconstruction models. Although the MRI-informed 3D reconstruction and high frame rate of our present study address these issues, the use of non-simultaneous data acquisition across the imaging modalities remains a shortcoming as it requires the subject to achieve repeatable breathing and posture for the separate data captures. For better model generation and validation of EIT using MRI, it is thus most attractive to perform simultaneous data acquisition. If EIT were to be routinely used as a bedside monitoring tool, optical tracking techniques could plausibly be used to inform electrode positions and an approximate boundary shape such as those by Forsyth *et al* (2011) in breast imaging. However, the strength of using MRI to inform the shape is that we can also assess the spatial resolution of EIT after post processing using, for example, mutual information as presented here. Additionally, we note that many patients with serious lung injuries in intensive care units have had MR and/or CT scans during their course of treatment, and so if this information is available it is logical to use this as prior information of the external shapes for the EIT forward and reconstruction finite element models as we have described here.

The present methodology could benefit significantly from improvements in the generation of the thorax model. Firstly, it was found that the resulting image reconstructions were sensitive to the somewhat arbitrary caudal and distal cut-off heights chosen for the model. If the model cut-off height chosen is too small, a non-physical zero current flux boundary condition is set at the caudal and distal ends of the model and the simulated voltages have logarithmic decays associated with a 2D model. We believe this is a major contribution to the twisting effects seen in some image reconstructions, as noted in section 3.3. Choosing a larger cut-off height resulted in little qualitative change in the reconstruction in the electrode planes, and unrealistic conductivity changes far away from the electrode planes. A possible way to compensate for this is to use infinite elements to model the voltage decay at the caudal and distal ends of the model such as by Vauhkonen *et al* (2000). Secondly, the image reconstructions presented here are 2.5D, in the sense that the model cross section did not vary along the caudal-distal axis. This could be addressed by generating fully 3D models incorporating the electrodes, from either commercial meshing packages such as Simpleware (2013) or open source projects such as iso2mesh (Fang and Boas 2009). Although demonstrated here for the MRI case, the use of imaging-informed EIT modelling and subsequent co-registration are directly transferable to other high resolution tomographic modalities, most notably CT.

The problems of model dimension and shape described here need to be resolved adequately before repeatable absolute imaging becomes a realistic possibility in thoracic EIT. With the introduction of fully 3D thorax models, we can envisage incorporating more spatial prior information of human tissue and anatomy, such as the liver, heart, ribs and spine into patient-specific thorax reconstruction models, as well as their *in vivo* conductivity values (Faes *et al* 1999). This would be a further development of the finite difference models developed by Zhang *et al* (2005). However, these high resolution modelling approaches have not yet had a significant impact in clinical lung EIT. Fully 3D thorax models with anatomy such as the heart included would not only improve the forward problem in lung EIT, but also be important to further improve the image co-registration and mutual information techniques outlined in this work. An assessment of the best prior smoothness constraints on the conductivity, and the voltage data, to offset the ill-posedness of EIT reconstruction, is another topic of paramount importance for absolute lung imaging. The use of classical Tikhonov regularization presented here, which in the Bayesian viewpoint assumes conductivity changes for all pixels are independent and identically distributed, is somewhat unrealistic and we feel this could be significantly improved by using generalized Tikhonov regularization and non-smooth penalization norms.

Acknowledgments

This work is funded via the RCUK Science Bridges award, EPSRC Ref: EP/G041733/1, and MIRAN, EPSRC Ref: EP/K00428X/1. Michael Crabb is funded through a Philips Industrial CASE Studentship, EPSRC Ref: EP/H50141X/1. Ron Kikinis is funded through the NIH grants: P41-EB015898, P41-RR013218 and U54-EB005149. All EIT and MRI data collections were performed at the Wolfson Molecular Imaging Centre (WMIC) of the University of Manchester.

References

Q2

- Adler A *et al* 2009 GREIT: a unified approach to 2D linear EIT reconstruction of lung images *Physiol. Meas.* **30** S35–55
- Adler A *et al* 2012 Whither lung EIT: where are we, where do we want to go and what do we need to get there? *Physiol. Meas.* **33** 679–94
- Adler A, Borsic A, Polydorides A and Lionheart W R B 2008 Simple FEMs aren't as good as we thought: experiences developing EIDORS v3.3 *Proc. 9th Int. Conf. EIT (Dartmouth College, New Hampshire)*
- Adler A, Guardo R and Berthiaume Y 1996 Impedance imaging of lung ventilation: do we need to account for chest expansion? *IEEE Trans. Biomed. Eng.* **43** 414–20
- Adler A and Lionheart W R B 2006 Uses and abuses of EIDORS: an extensible software base for EIT *Physiol. Meas.* **27** S25–42
- Barber D C and Brown B H 1984 Applied potential tomography *J. Phys. E* **17** 723–33
- Bikker I G, Preis C, Egal M, Bakker J and Gommers D 2011 Electrical impedance tomography measured at two thoracic levels can visualize the ventilation distribution changes at the bedside during a decremental positive end-expiratory lung pressure trial *Crit. Care* **15** R193
- Bodenstein M, David M and Markstaller K 2009 Principles of electrical impedance tomography and its clinical application *Crit. Care Med.* **37** 713–24
- Cook R D, Saulnier G J, Gisser D G, Goble J C, Newell J C and Isaacson D 1994 ACT3: a high-speed, high-precision electrical impedance tomograph *IEEE Trans. Biomed. Eng.* **41** 713–22
- Costa E L V, Lima R G and Amato M B P 2009a Electrical impedance tomography *Curr. Opin. Crit. Care* **15** 18–24
- Costa E L, Borges J B, Melo A, Suarez-Sipmann F, Toufen C, Böhm S H and Amato M B 2009b Bedside estimation of recruitable alveolar collapse and hyperdistension by electrical impedance tomography *Intensive Care Med.* **35** 1132–37
- Crabb M G, Davidson J L, Little R, Wright P, Naish J H, Parker G J M, McCann H and Lionheart W R B 2012 Accounting for electrode movement in MRI-informed functional EIT lung imaging *100 years of electrical imaging* (Paris: Presses des MINES) pp 83–86
- Dardé J, Hybönen N, Seppänen A and Staboulis S 2013 Simultaneous reconstruction of outer boundary shape and admittivity distribution in electrical impedance tomography *SIAM J. Imaging Sci.* **6** 176–98
- Davidson J L, Little R A, Wright P, Naish J, Kikinis R, Parker G J M and McCann H 2012 Fusion of images obtained from EIT and MRI *Electron. Lett.* **48** 617–18
- Faes T J C, van der Meij H A, de Munck J C and Heethaar R M 1999 The electrical resistivity of human tissues (100Hz–10MHz): a meta-analysis of review studies *Physiol. Meas.* **20** R1–10
- Fang Q and Boas D 2009 Tetrahedral mesh generation from volumetric binary and gray-scale images *Proc. 6th IEEE Int. Symp. on Biomedical Imaging: From Nano to Macro (Boston)* pp 1142–45
- Forsyth J, Borsic A, Halter R J, Hartov A and Paulsen K D 2011 Optical breast shape capture and finite-element mesh generation for electrical impedance tomography *Physiol. Meas.* **32** 797–809
- Frerichs I 2000 Electrical impedance tomography (EIT) in applications related to lung and ventilation: a review of experimental and clinical activities *Physiol. Meas.* **21** R1–21
- Frerichs I, Hinz J, Herrmann P, Weisser G, Hahn G, Dudykevych T, Quintel M and Hellige G 2002 Detection of local air content by electrical impedance tomography with electron beam CT *J. Appl. Physiol.* **93** 660–6

- Frerichs I, Pullett S, Elke G, Reifferscheid F, Schädler D, Scholz J and Weiler N 2009 Assessment of changes in distribution of lung perfusion by electrical impedance tomography *Respiration* **77** 282–91
- Grychtol B, Lionheart W R B, Bodenstern M, Wolf G K and Adler A 2012 Impact of model shape mismatch on reconstruction quality in electrical impedance tomography *IEEE Trans. Med. Imaging* **31** 1754–60
- Hinz J, Gehoff A, Moerer O, Frerichs I, Hahn G, Hellige G and Quintel M 2007 Regional filling characteristics of the lungs in mechanically ventilated patients with acute lung injury *Eur. J. Anaesthesiol.* **24** 414–24
- Hinz J, Neumann P, Dudykevych T, Andersson L G, Wrigge H, Burchardi H and Hedenstierna G 2003 Regional ventilation by electrical impedance tomography: a comparison with ventilation scintigraphy in pigs *Chest* **124** 314–22
- Ider Y Z, Gencer N G, Atalar E and Tosun H 1990 Electrical impedance tomography of translationally uniform cylindrical objects with general cross-sectional boundaries *IEEE Trans. Med. Imaging* **9** 49–59
- Kaipio J P, Kolehmainen V, Somersalo E and Vauhkonen M 2000 Statistical inversion and Monte Carlo sampling methods in electrical impedance tomography *Inverse Problems* **16** 1487–522
- Kolehmainen V, Lassas M and Ola P 2007 The inverse conductivity problem with an imperfectly known boundary in three dimensions *SIAM J. Appl. Math.* **67** 1440–52
- Kolehmainen V, Lassas M, Ola P and Siltanen S 2013 Recovering boundary shape and conductivity in electrical impedance tomography *Inverse Problems Imaging* **7** 217–42
- Kunst P W, Noordegraaf A V, Raaijmakers E, Bakker J, Groeneveld A B, Postmus P E and de Vries P M 1999 Electrical impedance tomography in the assessment of extravascular lung water in noncardiogenic acute respiratory failure *Chest* **116** 1695–702
- Kunst P W A, Noordegraaf A V, Hoekstra O S, Postmus P E and de Vries P M J M 1998 Ventilation and perfusion imaging by electrical impedance tomography: a comparison with radionuclide scanning *Physiol. Meas.* **19** 481–90
- Lionheart W R B 1998 Boundary shape and electrical impedance tomography *Inverse Problems* **14** 139–47
- Lionheart W R B 1999 Uniqueness, shape and dimension in EIT *Ann. New York Acad. Sci.* **873** 466–71
- Lundin S and Stenqvist O 2012 Electrical impedance tomography: potentials and pitfalls *Curr. Opin. Crit. Care* **18** 35–41
- McCann H, Ahsan S T, Davidson J L, Robinson R L, Wright P and Pomfrett C J D 2011 A portable instrument for high-speed brain function imaging: fEITER *Conf. Proc. IEEE Engineering in Medicine and Biology Society* pp 7029–32
- McCormick D, Davidson J L and McCann H 2007 Conversion of EIT brain images for co-registration *Proc. 8th Int. Conf. EIT (Graz)* pp 384–87
- Muders T, Luepschen H and Putensen C 2010 Impedance tomography as a new monitoring technique *Curr. Opin. Crit. Care* **16** 269–75
- Nebuya S, Noshiro M, Yonemoto A, Tateno S, Brown B H, Smallwood R H and Milnes P 2006 Study of the optimum level of electrode placement for the evaluation of absolute lung resistivity with the Mk3.5 EIT system *Physiol. Meas.* **27** S129–37
- Nissenen A, Kolehmainen V and Kaipio J P 2011 Reconstruction of domain boundary and conductivity in electrical impedance tomography using the approximation error approach *Int. J. Uncertain. Quantification* **1** 203–22
- Pieper S, Halle M and Kikinis R 2004 3D SLICER *Proc. 1st IEEE Int. Symp. on Biomedical Imaging: From Nano to Macro* vol 1 pp 632–35
- Pluim J P W, Antoine-Maintz J B and Viergever M A 2003 Mutual-information-based registration of medical images: a survey *IEEE Trans. Med. Imaging* **22** 986–1004
- Polydorios N 2002 Image reconstruction algorithms for soft-field tomography *Thesis* University of Manchester
- Ramachandran P 2001 Mayavi: A free tool kit for CFD data visualization *4th Annu. CFD symp.* (Aeronautical Society of India) <http://mayavi.sourceforge.net>
- Richard J C, Pouzot C, Gros A, Tourevielle C, Lebars D, Lavenne F, Frerichs I and Guérin C 2009 Electrical impedance tomography compared to positron emission tomography for the measurement of regional lung ventilation: an experimental study *Crit. Care* **13** R82
- Saulnier G J, Liu N, Tamma C, Xia H, Kao T J, Newell J C and Isaacson D 2007 An electrical impedance spectroscopy system for breast cancer detection *Conf. Proc. IEEE Engineering in Medicine and Biology Society* pp 4154–57

Q3

- Schöberl J 1997 NETGEN—An advancing front 2D/3D-mesh generator based on abstract rules *Comput. Vis. Sci.* **1** 41–52
- Simpleware Ltd 2013 ScanIP, + ScanFE and +ScanCAD software v. 6.0 reference guide *Exeter UK: Innovation Centre* www.simpleware.com
- Smit H J, Noordegraaf A V, Marcus J T, van der Weijden A, Postmus P, de Vries P M and Boonstra A 2003 Pulmonary vascular responses to hypoxia and hyperoxia in healthy volunteers and COPD patients measured by electrical impedance tomography *Chest* **123** 1803–9
- Soleimani M, Gómez-Laberge C and Adler A 2006 Imaging of conductivity changes and electrode movement in EIT *Physiol. Meas.* **27** S103–13 **Q4**
- Somersalo E, Cheney M and Isaacson D 1992 Existence and uniqueness for electrode models for electric current computed tomography *SIAM J. Appl. Math.* **52** 1023–40
- Teschner E and Imhoff M Electrical impedance tomography: the realization of regional ventilation monitoring (Lübeck: Dräger) www.draeger.com **Q5**
- Vauhkonen P J, Vauhkonen M and Kaipio J P 2000 Errors due to the truncation of the computational domain in static three-dimensional electrical impedance tomography *Physiol. Meas.* **21** 125–35
- Victorino J A *et al* 2004 Imbalances in regional lung ventilation: a validation study on electrical impedance tomography *Am. J. Respir. Crit. Care Med.* **169** 791–800 **Q6**
- Zhang J and Patterson R P 2005 EIT images of ventilation: what contributes to the resistivity changes? *Physiol. Meas.* **26** S81–92
- Zhao Z, Steinmann D, Frerichs I, Guttman J and Möller K 2010 PEEP titration guided by ventilation homogeneity: a feasibility study using electrical impedance tomography *Crit. Care* **14** R8

QUERIES

Page 2

Q1

Author: Please be aware that the colour figures in this article will only appear in colour in the Web version. If you require colour in the printed journal and have not previously arranged it, please contact the Production Editor now.

Page 15

Q2

Author: Please check the details for any journal references that do not have a blue link as they may contain some incorrect information. Pale purple links are used for references to arXiv e-prints.

Page 16

Q3

Author: Please provide the page number(s) in reference 'Ramachandran (2001)'.

Page 17

Q4

Author: Please check whether the first name of the second author in reference 'Soleimani *et al* (2006)' is okay as included.

Q5

Author: Please provide the year in reference 'Teschner and Imhoff'.

Q6

Author: Please check whether the first name of the author in reference 'victorino *et al* (2004)' is okay as included.