



## Health e-records and the Obesity Epidemic

[Link to publication record in Manchester Research Explorer](#)

### **Citation for published version (APA):**

Buchan, I. (2006). *Health e-records and the Obesity Epidemic*. British Computer Society Seminar, Manchester.

### **Citing this paper**

Please note that where the full-text provided on Manchester Research Explorer is the Author Accepted Manuscript or Proof version this may differ from the final Published version. If citing, it is advised that you check and use the publisher's definitive version.

### **General rights**

Copyright and moral rights for the publications made accessible in the Research Explorer are retained by the authors and/or other copyright owners and it is a condition of accessing publications that users recognise and abide by the legal requirements associated with these rights.

### **Takedown policy**

If you believe that this document breaches copyright please refer to the University of Manchester's Takedown Procedures [<http://man.ac.uk/04Y6Bo>] or contact [uml.scholarlycommunications@manchester.ac.uk](mailto:uml.scholarlycommunications@manchester.ac.uk) providing relevant details, so we can investigate your claim.



The University of Manchester  
MANCHESTER 1824


## Health e-records and the obesity epidemic

**Iain Buchan**  
The University of Manchester  
[buchan@manchester.ac.uk](mailto:buchan@manchester.ac.uk)  
BCS Seminar May 2006


## Presentation

- Obesity – ‘heads up’ the evidence production line is out of date
- Health e-records feeding discoveries
- Need e-records to support metabolic health
  - Population
  - Clinical
  - Personal


## Health evidence journey



Circa 1800: Laplace then Louis apply **probability theory to medical data, showing some treatments to be ineffective** - rebuked by medical profession – Quetelet’s concept of ‘the average man’ adds fuel to the fire




Mid 1600s: John Graunt used **death and tax data to inform civil action as plague swept London**

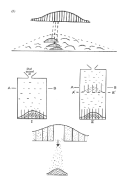


Mid-late 1800s: Lister uses **statistical arguments** and Pasteur’s germ theory to **revolutionise surgery** with carbolic spray

## Health evidence journey



Circa 1900: Galton, Pearson, Edgeworth and Yule establish **Statistics as a discipline**




Early/mid 1900s: Fisher advances statistical method and experimental philosophy as Greenwood and Bradford-Hill push **Statistics into medical research**



Mid-late 1900s: Cochrane pushes for the routine application of randomised **clinical trials** and leaves the **evidence based medicine** movement in his wake

## Evidence limits showing

- Epidemiology has exhausted the big simple causes of ill health
- Many trials have weak external validity
- Public health interventions unstudied

Many patterns of ill health in society remain unexplained via conventional studies

## Meanwhile...

- **Biology** becoming an **information science**
- **E-Science** (integration of data, methods and investigators)
- **More data**, with more **structure**
- **Inductive** ‘mining’ approaches rising
- **Triage** & brain vs. silicon priorities

## Solution?: Health Informatics partnership to build a new biomedical evidence production line

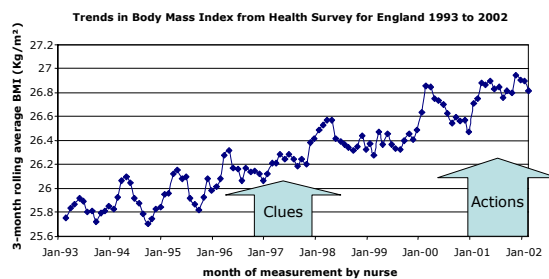
Lets consider the obesity epidemic...

## Body Mass Index (BMI)

- Weight for height
- An easy measure of adiposity
- BMI = Weight (Kg) / Height (m<sup>2</sup>)
- Not ideal for measuring individual adiposity but good for monitoring change over time in populations.



## Early warning of rising adiposity of English adults



## Complex biology

- big mass heart works harder changes of hypertension
- high cholesterol and low HDL:LDL ratio
- insulin resistance
- altered hormone metabolism e.g. oestrogens
- altered liver function
- damaging stresses on joints, ligaments, tendons and muscles
- breathing impairment
- altered intestinal function
- Just starting to understand the interaction of these factors in pathologies such as metabolic syndrome:
  - central obesity + dyslipidaemia + hypertension + diabetes
  - causes early death & strongly predicted by childhood obesity

## Personal health impact

- Early death 'from all causes'
  - obesity takes around a decade off your life
    - more if you smoke
    - less if you take regular exercise
- Suffering and disability through:
  - cardiovascular disease
  - diabetes
  - osteoarthritis
  - low self-esteem and social functioning
  - some cancers (colorectal, ovarian, endometrial)
  - liver and intestinal disorders
  - sexual dysfunction
  - sleep apnoea

## Population health impact

Estimate for the obesity impact in the Northwest:

Bringing everyone in the **Northwest**

to a body mass index less than 30,

i.e. eliminating obesity,

would result in **7,000 fewer deaths per year**

(95% CI = 2,000 to 14,000)

## Extraordinary social problem

Energy balance

in (eating)

out (physical activity)

depends on families, friends, co-workers etc.

can't be isolated and treated in individuals

'passive obesity'



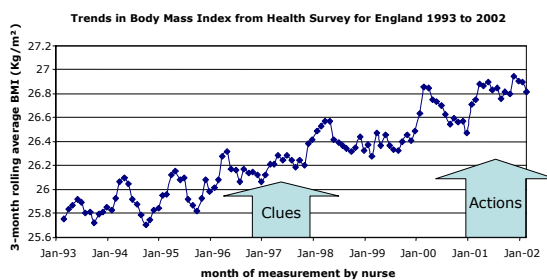
## Discovery from e-records

Where are the signals coming from?

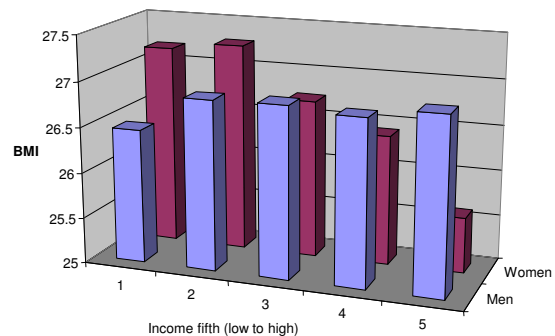
## Research archives

Health Survey for England...

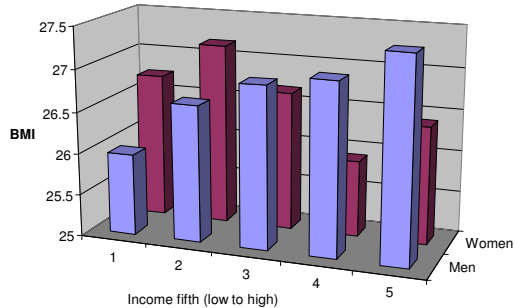
### Early warning of rising adiposity of English adults



### Women and not men from low-income households are fatter in England



Women from low-income households and men from high-income households are fatter in Greater Manchester



Data from Health Survey for England

## Information utility

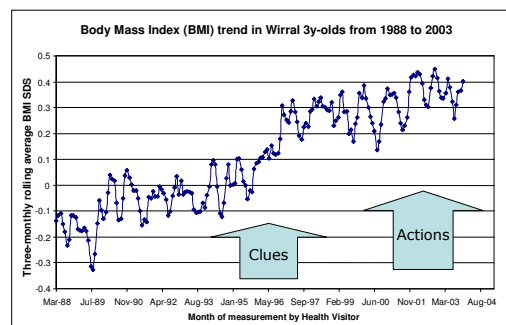
- E-records in UK Data Archive
  - But: wait 2+ years after collection
- Large national sample
  - But: only 0.02% of population therefore difficult to study small areas/sub-groups
  - sampling of children not random
- Some objective measurements by nurse
  - But: non-validated questionnaires lead to unexpected results that might reflect response bias more than real trends

Intelligence from routinely-collected but *not routinely analysed* data:

Obesity in Wirral 3-yr-olds, 88 to 03...



Rising fatness of Wirral 3yr olds from 1988 to 2003

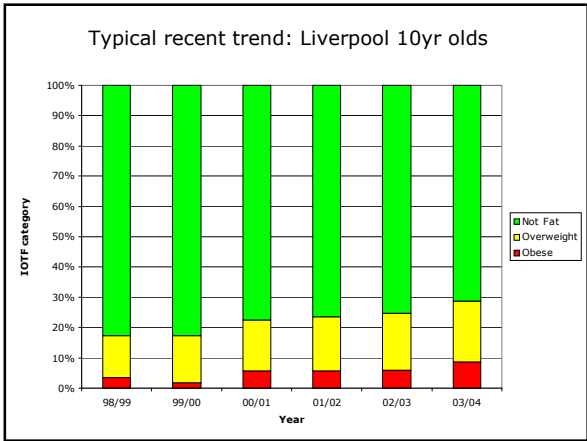
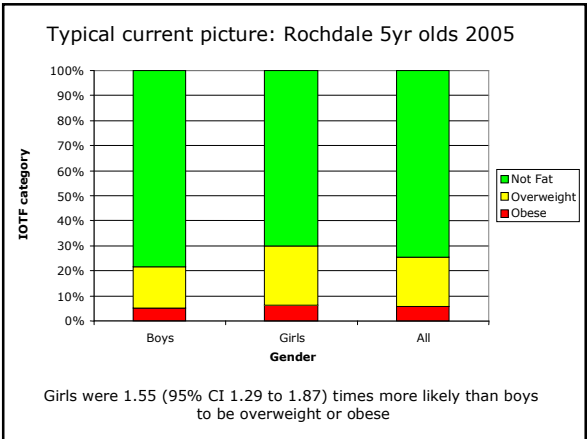
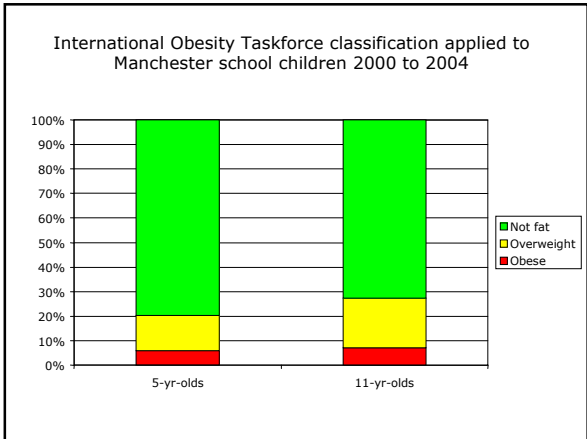


SDS = standard deviation score from 1990 British Growth Reference charts - adjusts for age and sex of the child

## Information Utility

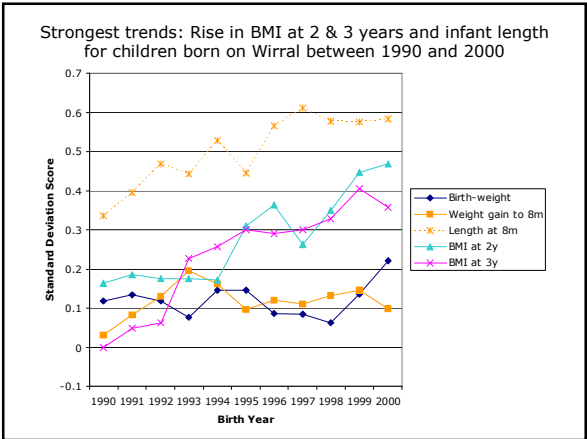
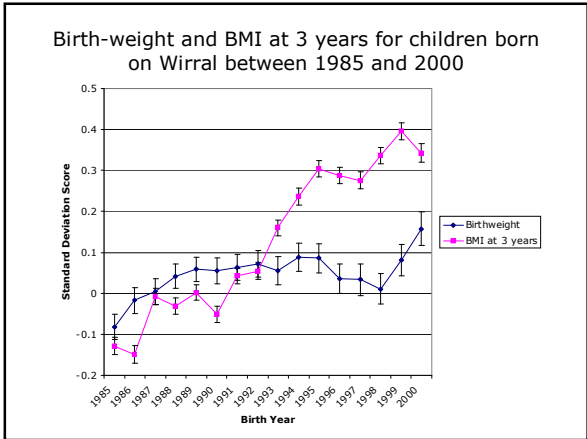
- Large samples
  - Approx. 30-75% coverage of population
- Data quality varies
  - Health visiting and school sources
  - Careful cleaning & interpretation
  - Corroborate findings across localities

There are similar child health data in other localities...



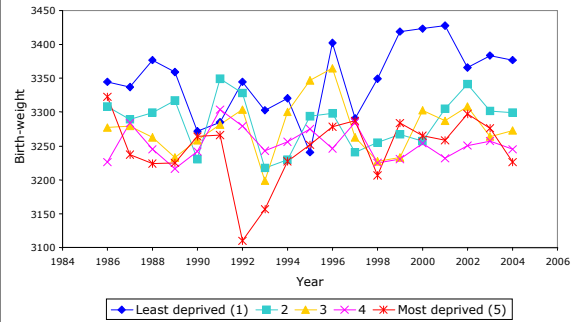
Routine data - stimulating science:

At what age do signs of the obesity epidemic appear?

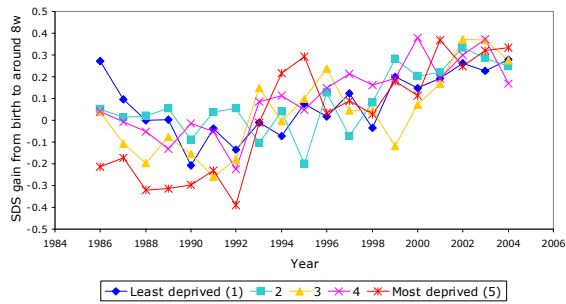


Are some social groups affected more than others?

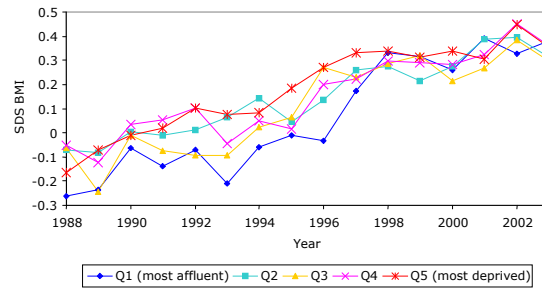
Babies of affluent families are born heavier in Manchester still



Vanishing social trends in early infant weight gain in Manchester from 1986 to 2004

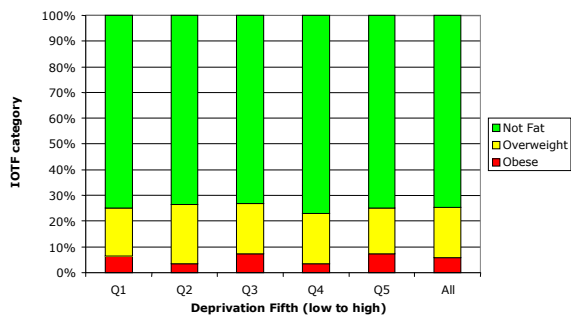


Decreasing inequalities in BMI at 3 years on Wirral



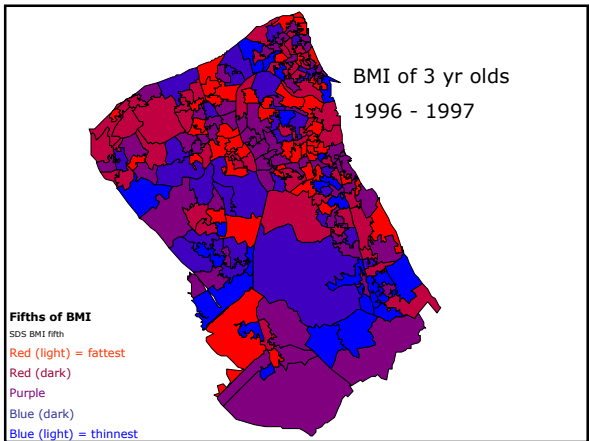
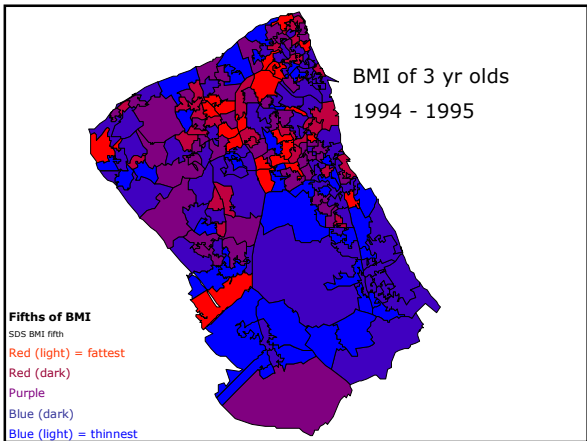
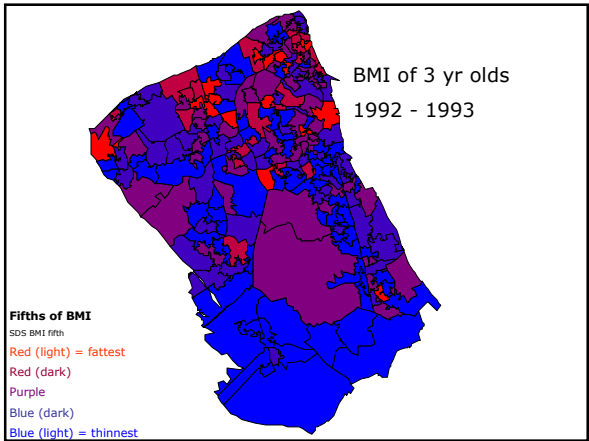
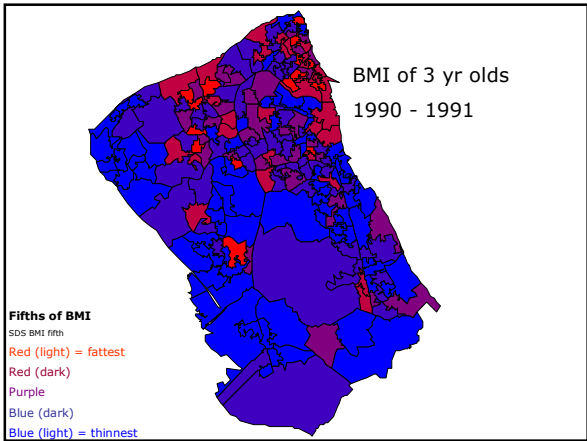
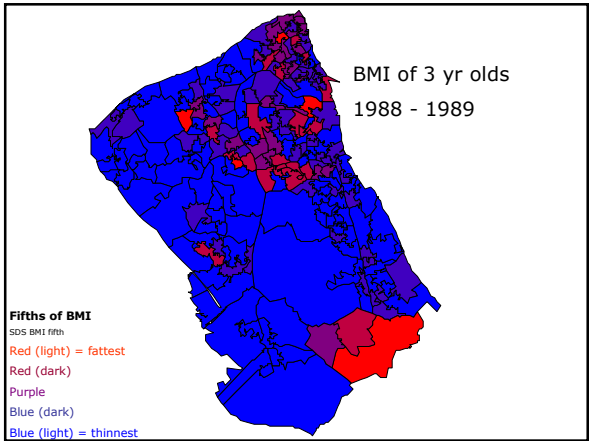
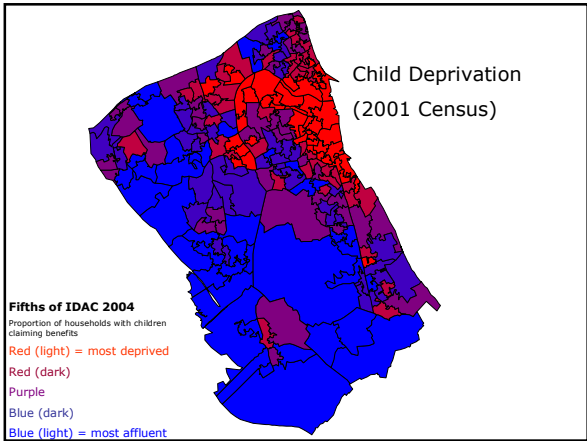
1988-1998:  $r = 0.039$  (95% CI: 0.028 to 0.050)  
 1998-2003:  $r = 0.008$  (95% CI: -0.008 to 0.024)

Rochdale 5yr old obesity by deprivation in 2005

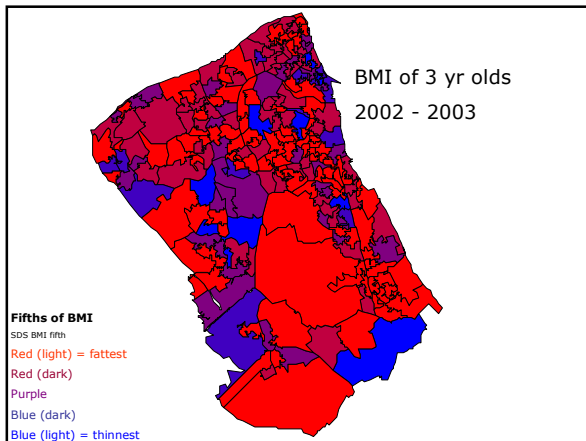
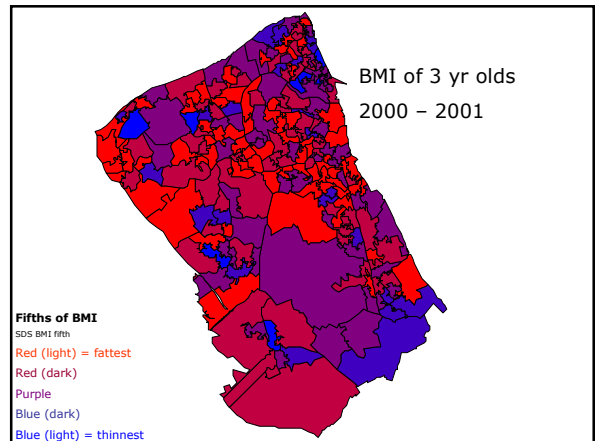
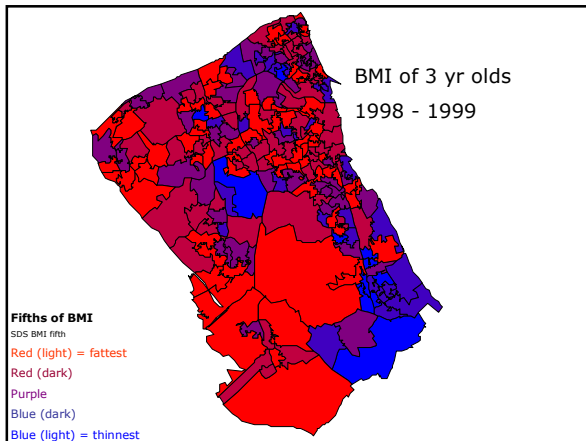


No correlation with deprivation (IDAC 2004):  $r = -0.04$  (-0.08 to 0.05)

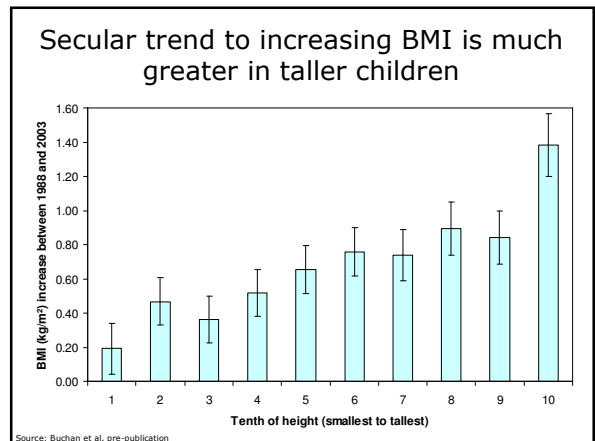
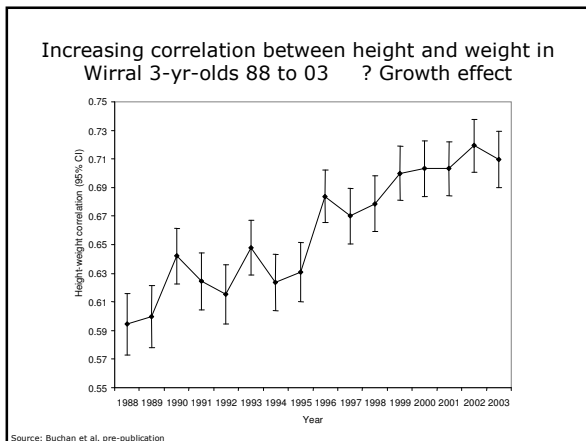
...was there a spatial as well as a social diffusion pattern of obesity across the 1990s?...



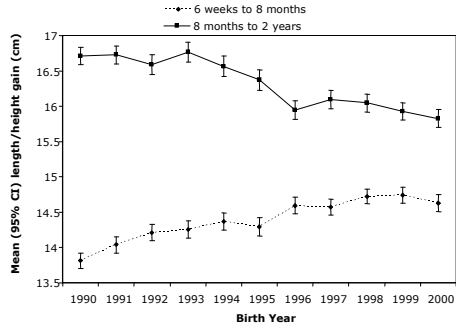




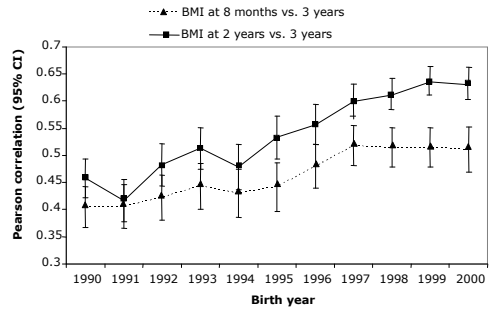
...height and linear growth are socially sensitive, so how did they change with BMI across the 1990s?...



### Faster infant growth and slower early child growth

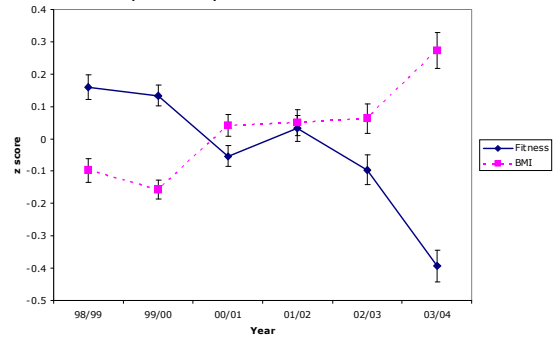


### Adiposity fluctuates less in young children than it used to

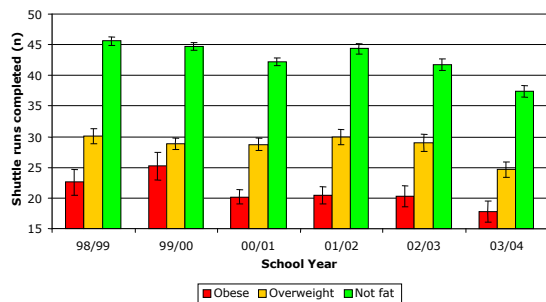


...if fat is sticking more through childhood what is happening to physical fitness?...

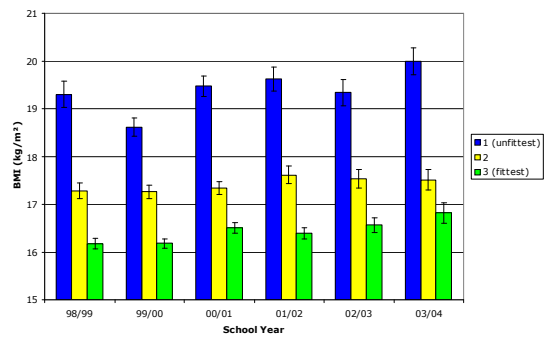
### Rise in BMI and fall in cardio-respiratory endurance of Liverpool 10 year olds from 1998 to 2004



### Cardio-respiratory endurance levels of Liverpool 10 year olds fell in all BMI groups



### BMI of Liverpool 10 year olds rose irrespective of cardio-respiratory endurance



## Discoveries from service e-records

The obesity epidemic in children:

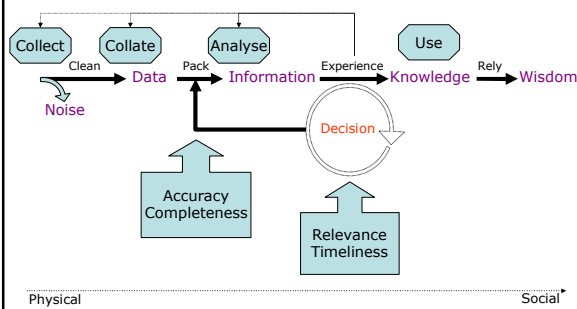
- Concurred with accelerating infant growth
- Showed a temporo-spatial spread pattern
- Ignored socio-economic groups
- Affected the physically fit and unfit alike

## Evidence Based Practice Needs Practice Based Evidence



## Informatics challenges in tackling obesity...

### Intelligence to support decisions

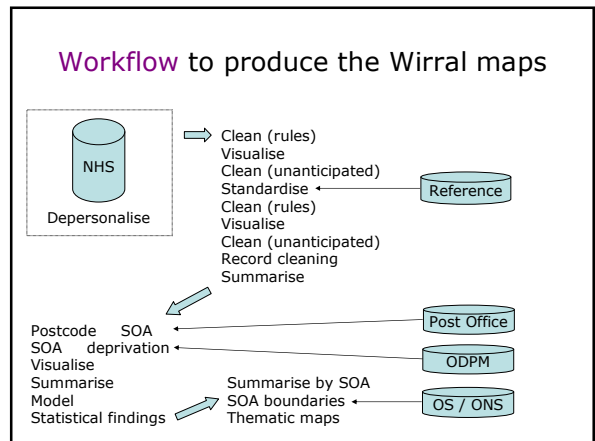
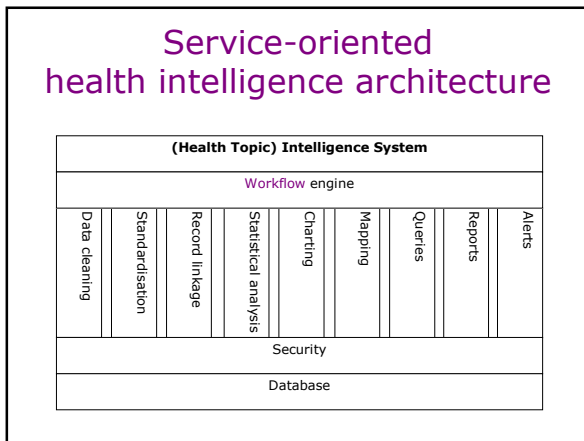
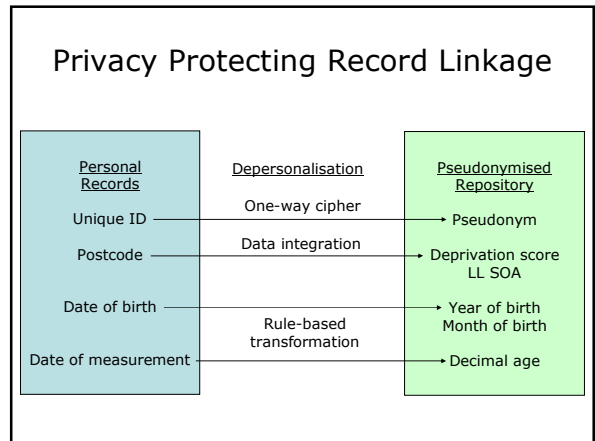
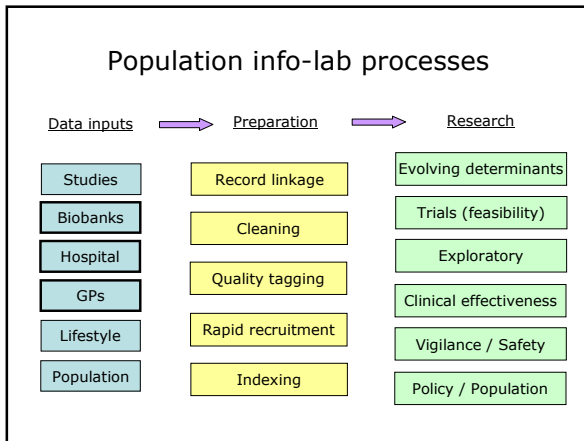
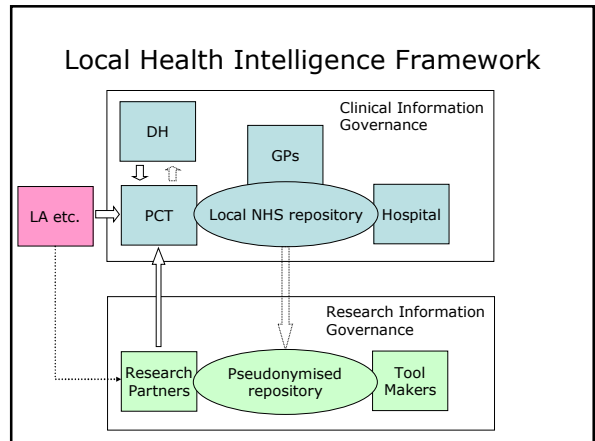
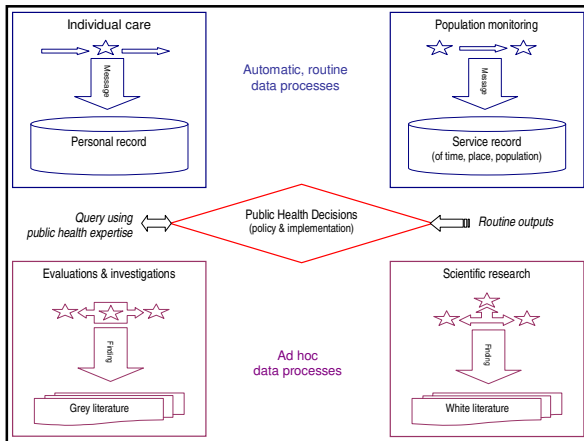


## Future decision support

- Personal
  - "what activities and diet do I need to combat the past 48h of metabolic stress my biosensors report?"
- Clinical
  - "what dose adjustment should I make to match my patient's adiposity?"
- Population
  - "what is the obesity-related health gain for every pound we invest in green transport?"

## Information culture shifting

- ↓ Report cycles → ↑ surveillance
- ↑ tactical service responses
- More personal health systems:
  - ↑ co-ordination (individual & societal) of preventive healthcare





... Turning bio-health information  
into discoveries



M.C. Escher  
Order and Chaos, 1959