



Chin, W. H., Fan, Z., & Haines, R. (2014). Emerging Technologies and Initiatives in R&D on 5G Networks. In *Proceedings of 2014 IEICE ICTF IEICE*.

Publisher's PDF, also known as Version of record

[Link to publication record in Explore Bristol Research](#)  
PDF-document

This is the final published version of the article (version of record). It first appeared online via IEICE at <http://iscover.ieice.org/iscover/page/ARTICLE-0836C88F-7763-55DB-D6E4-0436E2608742>.

## University of Bristol - Explore Bristol Research

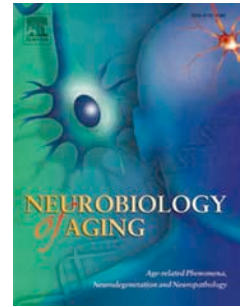
### General rights

This document is made available in accordance with publisher policies. Please cite only the published version using the reference above. Full terms of use are available:  
<http://www.bristol.ac.uk/pure/about/ebr-terms>

# Accepted Manuscript

Screening Exon 16 and 17 of the Amyloid Precursor Protein Gene in Sporadic Early-Onset Alzheimer's Disease (sEOAD)

Imelda S. Barber, Jennyfer M. García-Cárdenas, Chidchanok Sakdapanichkul, Christopher Deacon, Gabriela Zapata Erazo, Rita Guerreiro, Jose Bras, Dena Hernandez, Andrew Singleton, Tamar Guetta-Baranes, Anne Braae, Naomi Clement, Tulsi Patel, Keeley Brookes, Christopher Medway, Sally Chappell, David M. Mann, ARUK Consortium



PII: S0197-4580(15)00615-6

DOI: [10.1016/j.neurobiolaging.2015.12.011](https://doi.org/10.1016/j.neurobiolaging.2015.12.011)

Reference: NBA 9481

To appear in: *Neurobiology of Aging*

Received Date: 1 July 2015

Revised Date: 3 November 2015

Accepted Date: 20 December 2015

Please cite this article as: Barber, I.S., García-Cárdenas, J.M., Sakdapanichkul, C., Deacon, C., Zapata Erazo, G., Guerreiro, R., Bras, J., Hernandez, D., Singleton, A., Guetta-Baranes, T., Braae, A., Clement, N., Patel, T., Brookes, K., Medway, C., Chappell, S., Mann, D.M., ARUK Consortium, Screening Exon 16 and 17 of the Amyloid Precursor Protein Gene in Sporadic Early-Onset Alzheimer's Disease (sEOAD), *Neurobiology of Aging* (2016), doi: 10.1016/j.neurobiolaging.2015.12.011.

This is a PDF file of an unedited manuscript that has been accepted for publication. As a service to our customers we are providing this early version of the manuscript. The manuscript will undergo copyediting, typesetting, and review of the resulting proof before it is published in its final form. Please note that during the production process errors may be discovered which could affect the content, and all legal disclaimers that apply to the journal pertain.

## **Screening Exon 16 and 17 of the Amyloid Precursor Protein Gene in Sporadic Early-Onset Alzheimer's Disease (sEOAD)**

Imelda S. Barber<sup>1</sup>, Jennyfer M. García-Cárdenas<sup>1</sup>, Chidchanok Sakdapanichkul<sup>1</sup>, Christopher Deacon<sup>1</sup>, Gabriela Zapata Erazo<sup>1</sup>, Rita Guerreiro<sup>2</sup>, Jose Bras<sup>2</sup>, Dena Hernandez<sup>3</sup>, Andrew Singleton<sup>3</sup>, Tamar Guetta-Baranes<sup>1</sup>, Anne Braae<sup>1</sup>, Naomi Clement<sup>1</sup>, Tulsi Patel<sup>1</sup>, Keeley Brookes<sup>1</sup>, Christopher Medway<sup>1</sup>, Sally Chappell<sup>1</sup>, David M. Mann<sup>4</sup>, ARUK Consortium and Kevin Morgan<sup>1</sup>

Details for ARUK Consortium:-

Peter Passmore<sup>5</sup>, David Craig<sup>5</sup>, Janet Johnston<sup>5</sup>, Bernadette McGuinness<sup>5</sup>, Stephen Todd<sup>5</sup>, Reinhard Heun<sup>6</sup>, Heike Kölsch<sup>7</sup>, Patrick G. Kehoe<sup>8</sup>, Emma R.L.C. Vardy<sup>9</sup>, Nigel M. Hooper<sup>4</sup>, Stuart Pickering-Brown<sup>4</sup>, Julie Snowden<sup>10,4</sup>, Anna Richardson<sup>10,4</sup>, Matt Jones<sup>10,4</sup>, David Neary<sup>10,4</sup>, Jenny Harris<sup>10,4</sup>, Christopher Medway<sup>1</sup>, James Lowe<sup>1</sup>, A. David Smith<sup>11</sup>, Gordon Wilcock<sup>11</sup>, Donald Warden<sup>11</sup> & Clive Holmes<sup>12</sup>

1. Schools of Life Sciences and Medicine, University of Nottingham, Nottingham, NG7 2UH, UK
2. Department of Molecular Neuroscience, Institute of Neurology, University College London, Queen Square, London, WC1N 1PJ, UK
3. Laboratory of Neurogenetics, National Institute on Aging, National Institutes of Health, Bethesda, MD, USA
4. Institute of Brain, Behaviour and Mental Health, Faculty of Medical and Human Sciences, University of Manchester, Manchester, M13 9PT, UK
5. Centre for Public Health, School of Medicine, Queen's University Belfast, BT9 7BL, UK
6. Royal Derby Hospital, Derby, DE22 3WQ, UK
7. Department of Psychiatry, University of Bonn, Bonn 53105, Germany
8. School of Clinical Sciences, John James Laboratories, University of Bristol, Bristol, BS16 1LE, UK
9. Ageing and Complex Medicine, Salford Royal NHS foundation trust, Stott Lane, Salford, M6 8HD, UK
10. Cerebral Function Unit, Greater Manchester Neurosciences Centre, Salford Royal NHS Foundation Trust, Stott Lane, Salford, M6 8HD, UK
11. OPTIMA, Nuffield Department of Clinical Neurosciences, Level 6, West Wing, John Radcliffe Hospital, University of Oxford, Oxford, OX3 9DU, UK
12. Clinical and Experimental Science, University of Southampton, Southampton, SO17 1BJ, UK

Corresponding author:

Professor Kevin Morgan

Professor of Human Genomics and Molecular Genetics

Institute of Genetics

School of Molecular Medical Sciences

A Floor, West Block, Room 1306

Queens Medical Centre

Nottingham NG7 2UH

United Kingdom

Tel: +44 115 8230724

Fax: +44 115 9709167

E-mail: [kevin.morgan@nottingham.ac.uk](mailto:kevin.morgan@nottingham.ac.uk)

## **Abstract**

ACCEPTED MANUSCRIPT

Early-onset Alzheimer's disease (EOAD) can be familial (FAD) or sporadic (sEOAD); both have a disease onset  $\leq$  65 years of age. 451 sEOAD samples were screened for known causative mutations in exon 16 and 17 of the Amyloid Precursor Protein gene (*APP*). Four samples were shown to be heterozygous for one of three known causative mutations: p.A713T, p.V717I and p.V717G, this highlights the importance of screening EOAD patients for causative mutations. Additionally, we document an intronic 6 base pair (bp) deletion located 83 bp downstream of exon 17 (rs367709245, IVS17 83-88delAAGTAT), which has a non-significantly increased minor allele frequency in our sEOAD cohort (0.006) compared to LOAD (0.002) and controls (0.002). To assess the effect of the 6 bp deletion on splicing, COS-7 and BE(2)-C cells were transfected with a minigene vector encompassing exon 17. There was no change in splicing of exon 17 from constructs containing either wild type or deletion inserts. Sequencing of cDNA generated from cerebellum and temporal cortex of a patient harbouring the deletion found no evidence of transcripts with exon 17 removed.

**Keywords**

ACCEPTED MANUSCRIPT

Alzheimer's disease; early-onset; sporadic; screening; *APP*; rs367709245;

ACCEPTED MANUSCRIPT

Alzheimer's disease (AD) was estimated to cause 500,000 deaths in the U.S. in 2010 (Alzheimer's Association, 2014), and this number is steadily increasing with the aging population. Sporadic early-onset Alzheimer's disease (sEOAD) patients have a disease onset  $\leq 65$  years of age and do not harbour a known causative mutation; the remaining sporadic cases are classified as late-onset Alzheimer's disease (LOAD). Both sporadic forms have a complex aetiology, with LOAD estimated to be 70% heritable. Patients with a causative mutation are classified as Familial Alzheimer's disease (FAD) or autosomal dominant Alzheimer's disease (ADAD). Since the 1990's many causative mutations have been identified, all located in one of three genes; Amyloid Precursor Protein (*APP*), Presenilin 1 (*PSEN1*) and Presenilin 2 (*PSEN2*) (Goate et al., 1991; Levy-lahad et al., 1995; Sherrington et al., 1995). Studies have found that mutations in *PSEN1* and *APP* account for the majority of FAD cases, approximately 55% and 13% respectively (Janssen et al., 2003). The remainder are caused by mutations in *PSEN2* and duplications in *APP*. The median age of onset for all these variants is between 45 and 55 years of age, with onset presenting as early as the mid 20's or as late as the mid 70's (Ryman et al., 2014). Given their similar clinical presentation it is highly likely that FAD patients have been misclassified as sEOAD (or vice versa) if a proband's family history has not been documented, or genetic screening of the proband has not been conducted.

Screening sEOAD patients for causative mutations would help prevent introduction of FAD into sEOAD cohorts and thereby increase the power to detect true genetic loci associated with sEOAD. Causative mutations in *APP*, *PSEN1* and *PSEN2* are documented in the AD&FTD mutation database (Cruts et al., 2012). Unlike *PSEN1* and *PSEN2*, causative *APP* mutations are clustered into just two exons (16 and 17), both of which are less than 500 base pairs (bp) and therefore amenable to screening via Sanger sequencing.

In this paper we report on screening of 451 sEOAD samples from the ARUK DNA Resource for causative mutations in exon 16 and 17 of *APP* using a sequencing reaction for each exon. Additionally there is a documented 6 bp deletion (rs367709245; IVS17 83-88delAAGTAT) located downstream of exon 17 and the design of this PCR product also permitted genotyping of this variant. As rs367709245 occurs near an intron/exon boundary we have also investigated its possible effect on splicing and generation of potential alternative isoforms of *APP*.

## 2 **Materials and Methods**

All methods were conducted according to the manufacturer's instructions unless otherwise stated. sEOAD samples were screened for causative mutations by Sanger sequencing. In addition, the sequencing of exon 17 permitted genotyping of rs367709245 (*APP* 6 bp intronic deletion, 83 bp downstream of exon 17). Further genotyping of rs367709245 in LOAD and controls was achieved via a custom designed KASP genotyping assay.

### 2.1 **Samples**

The 451 sEOAD samples had an age of disease onset (AAO)  $\leq$  65 years of age (Table 1A), the 584 LOAD samples had an AAO  $>$  65 years of age (Table 1B) and the 528 controls had an age at death (AAD)  $>$  65 years of age (Table 1C). Where AAO was not documented, it was derived assuming 8 years disease duration from age at death (Brookmeyer et al., 2002), or age at sampling (AAS) was used with the understanding it would approximate to disease onset.

All case samples were diagnosed as either definite (post mortem confirmed) or probable Alzheimer's disease (AD) according to National Institute of Neurological and Communicative Disorders and Stroke and the Alzheimer's Disease and Related Disorders Association (NINCDS-ADRDA), and the Consortium to Establish a Registry for Alzheimer's Disease (CERAD) guidelines. All samples used in this study were received with informed consent and were approved by the local Ethics Committee.

DNA was extracted from blood or brain tissue using a standard phenol chloroform extraction method. DNA quality and quantity was assessed via gel electrophoresis and NanoDrop™ 3300 spectrometer respectively.

### 2.2 **Sequencing of APP**

*APP* exon 16 (485bp) was amplified using primers E16F 5' CAG-GTT-TCC-CTT-ACC-CTT-TC 3' and E16R 5' GCG-CTC-AGC-CTA-GCC-TAT-TT 3' (Eurogenomics). *APP* exon 17 (482 bp) was amplified using primers E17F 5' CAA-CCA-GTT-GGG-CAG-AGA-AT 3' and E17R 5' CAC-GGT-AAG-TTG-CAA-TGA-ATG 3' (Eurogenomics). Both amplicons were sequenced in the forward direction using primer E17F or E16F, those found to harbour a causative mutation were validated by sequencing in the reverse direction using reverse primer E16R or E17R.

Genomic DNA was amplified using 2 ng/ $\mu$ l gDNA, 1 pM forward primer, 1 pM reverse primer, 1x Buffer (BioLabs), 0.2 mM dNTPs (Thermo Scientific), 0.1 U/ $\mu$ l LongAmp Taq DNA polymerase (New England Biolabs). The reaction was subjected to the following conditions: initial denaturation step of 94°C for 2 min, followed by 35 cycles of 94°C for 30 sec, 58°C (exon 16) or 61°C (exon 17) for 15 sec, and 72°C for 45 sec, with a final extension step at 72°C for 7 min. PCR products were cleaned using ExoSAP-IT (Affymetrix) and Sanger sequenced using BigDye Terminator v3.1 (ThermoFisher Scientific). The reactions were cleaned using Performa DTR Gel filtration Cartridges (Edge Biosystems) and sequenced on the ABI 3130.

### 2.3.1 TA Cloning

gDNA was amplified for exon 17 using the method described in section 2.2, but with primer E17SF 5' CAA-ATA-GTC-GAC-CAA-CCA-GTT-GGG-CAG-AGA-AT 3' (Eurogenomics) which has a Sall restriction site at position 7 to 12 of the primer, and E17SR 5' GAG-CAG-TCT-AGA-CAC-GGT-AAG-TTG-CAA-TGA-ATG 3' (Eurogenomics) which has a Xbal restriction site at position 7 to 12 of the primer. The product was 494 bp in length and contained exon 17 (147 bp) along with 167 bp upstream and 192 bp downstream intronic sequence.

Amplicon DNA ligated with the pCR 2.1-TOPO vector (Invitrogen) was transformed into One Shot TOP10 Chemically Competent *E. coli* cells (Invitrogen). Colonies harbouring insert were selected and DNA extracted from liquid bacterial cultures using the QIAprep Spin Miniprep Kit (QIAGEN) and sequenced to confirm the presence/absence of the deletion. The APP insert for each allele was then subcloned into the Exon-trap vector pET01 (MoBiTech) using Sall and Xbal digestion followed by ligation with T4 Ligase.

### 2.3.2 pET01 Cloning and COS-7 and BE(2)-C Cell Culture

Plasmids were sequenced to confirm successful cloning using primer pET01S 5' GAT-CGA-TCC-GCT-TCC-TG 3' or pET01AS 5' GTC-ATA-GCT-GTT-TCC-TG 3' (Eurofin Genomics). The NucleoBond® Xtra Midi EF/Maxi EF kit (Macherey-Nagel) was used to extract pET01 plasmids free of endotoxins and suitable for transfection.

COS-7 and BE(2)-C cells were obtained from the European Collection of Cell Cultures (ECACC). COS-7 cells were cultured in Dulbecco's modified eagle medium (Sigma) with 10% foetal bovine serum (Gibco), 2mM L-Glutamine, 100 U/ml penicillin (Gibco), 100 µg/ml streptomycin (Gibco) and 2.5 µg/ml fungizone. BE(2)-C were cultured with 50% of eagle's minimum essential medium and 50% Ham's F12 supplement with additional components 1% of non-essential amino acids, 2 mM L-Glutamine, 1 mM Sodium Pyruvate, 10% foetal bovine serum, 100 U/ml penicillin, 100 µg/ml streptomycin and 100 U/ml fungizone.

Cells were incubated at 37°C in a humidified atmosphere containing 5% carbon dioxide and split when they reached 90% confluence. Cells were detached by trypsinisation at 37°C for 2-5 minutes and once detached complete medium was added.

Cells were plated for transfection using  $3.5 \times 10^5$  COS-7 cells or  $6 \times 10^5$  BE(2)-C cells per 6cm dish.

### 2.3.3 Transfection and cDNA Sequencing

COS-7 and BE(2)-C cells were transfected following overnight incubation at 37°C using 1 µg of DNA, 9 µl of transfast (Promega), and 2ml of serum free medium. The mixture was added to the cells and incubated for 1 hour. Finally, 4 ml of complete medium was added and the cells were incubated for a further 24 hours before cells were harvested by trypsinisation. The experiment was repeated a minimum of three times for each cell line.



Total RNA was extracted using an RNeasy mini kit (Qiagen). RNA was treated with DNase (Ambion® TURBO DNA-free Kit) and cDNA was synthesised in duplicate using the AffinityScript Multi Temperature cDNA Synthesis Kit (Agilent) with either 0.3 µg random primer (Agilent) or 0.5 µg Oligo(dT) primers (Agilent), along with 2 µg of RNA. Reactions containing no enzyme were included as a negative control.

cDNA was amplified in a final volume of 30 µl using 500ng of cDNA, 0.5 pM primer pET01S (Eurofins Genomics), 0.5 pM primer pET01AS (Eurofins Genomics), 1x Buffer (Roche), 1.5 mM MgCl<sub>2</sub> (Roche), 0.2 mM dNTPs (Thermo Scientific), 5 U/µl High Fidelity Taq DNA polymerase (Roche), and molecular grade water to the required volume. The product was predicted to be 389 bp in length if exon 17 was retained or 242 bp if exon 17 was removed. The reaction was subjected to the following conditions: initial extension at 94°C for 2 min followed by 35 cycles of 94°C for 30 sec, 58°C for 30 sec and 72°C for 1 min, with a final extension step of 72°C for 7 min. PCR product (5 µl) was cleaned and sequenced using primer pET01S/pET01AS.

#### **2.4 Patient tissue cDNA analysis**

Brain tissue from the cerebellum and temporal cortex from a patient who harboured the *APP* 6bp deletion was obtained from our collaborators (Oxford OPTIMA Study); tissue was homogenised using liquid nitrogen prior to RNA extraction and cDNA synthesis.

cDNA was amplified using 1ul cDNA, forward primer E16SF 5' TGG-ATG-CAG-AAT-TCC-GAC-ATG 3' (Eurofins Genomics) and reverse primer E18SR 5' TTC-TGC-TGC-ATC-TTG-GAC-AG 3' (Eurofins Genomics). The product was predicted to be 253 bp in length if exon 17 was retained or 106 bp if exon 17 was removed and this was verified by sequencing. Reactions containing no RNA or enzyme (RT minus) were included as negative controls.

#### **2.5 Genotyping assay**

Reactions were conducted in a final volume of 8ul using 1x MasterMix (KASP), 1x Assay (KASP), 2.5 ng/µl gDNA and molecular grade water to the required volume. Reactions were thermally cycled with an initial step of 94°C for 15 min, followed by 10 cycles of 94°C for 20 sec, 61°C (decreasing 0.6°C every cycle) for 60 sec, 32 cycles of 94°C for 20 sec, 55°C for 60 sec, and a final step of 30°C for 60 sec. A further 6 cycles of 94°C for 20 sec and 55°C for 60 sec was conducted to generate tighter clusters where appropriate. All samples positive for the deletion were confirmed by Sanger sequencing.

#### **2.6 Statistical analyses**

Power calculations were completed in Quanto using a 'gene-only' hypothesis and 'log-additive' model.

**3.1 Screening exon 16 and exon 17 of *APP* in sEOAD**

From our cohort of 451 sEOAD samples, all samples were successfully Sanger sequenced with good coverage of all causative mutations in exon 16 and 17. None of the samples carried a causative mutation in exon 16; however we did identify four samples (9%) (Table 2) heterozygous for one of three known causative mutations in exon 17; p.A713T (two samples), p.V717I (one sample) and p.V717G (one sample), all were verified by sequencing in both directions as shown in Figure 1. In addition to the above; unpublished data has successfully genotyped 408 of the 451 sEOAD samples using the NeuroChip (NeuroX) version 1 (Nalls et al., 2015). Included on the NeuroX are 82 of the 222 causative mutations from the AD&FTD mutation database ([www.molgen.vib-ua.be/ADMutations/](http://www.molgen.vib-ua.be/ADMutations/)) (Cruts et al., 2012), this includes 24 in *APP*, 185 in *PSEN1* and 13 in *PSEN2*. In our data, 80 of these mutations passed quality control; 6 in *APP*, 68 in *PSEN1* and 6 in *PSEN2*. The NeuroX data confirmed 2/3 *APP* causative mutations found during Sanger sequencing, the third was not present on the NeuroX. All 408 samples were wild type for the 68 *PSEN1* and 6 *PSEN2* causative mutations genotyped on the NeuroX.

Sassi *et al* (Sassi et al., 2014) previously screened 47 EOAD samples and found one sample (2%) heterozygous for a causative *APP* mutation and four samples (8.5%) heterozygous for one of four *PSEN1* mutations, two were causative and the remaining two were novel variants which are probably pathogenic. Nicolas *et al* (Nicolas et al., 2015) screened 264 EOAD samples and found three samples (1%) heterozygous for one of three *PSEN1* variants that are possibly or probably pathogenic; they also found one sample (0.4%) heterozygous for a causative *PSEN2* mutation. None of the patients in this study harboured *APP* mutations. In comparison to these studies we have identified a higher frequency of samples harbouring a causative *APP* mutation (9% compared with 2% and 0%), a lower frequency of *PSEN1* mutations (0% compared to 8.5% and 1%) with a similar frequency for *PSEN2* mutations. Our screening for *PSEN1/PSEN2* mutations was not exhaustive, as the NeuroX genotyped under half of the causative *PSEN1/PSEN2* mutations. Given this data and the fact causative *PSEN1* mutations account for the majority of EOAD our cohort are likely to harbour causative *PSEN1* mutations and possibly a causative *PSEN2* mutation.

74% of our cohort (335 samples) were clinically diagnosed as probable AD, thus it is possible that a proportion of these samples have mixed dementia or a different type of dementia, further screening of our sEOAD samples for mutations that cause or are associated with other dementias would shed some light on this, and would also investigate genetic crossover between different types of neurodegeneration.

This data demonstrates the need to screen sEOAD cohorts for causative mutations as there are likely to be a low frequency of such changes present due to their similar clinical presentation. There is currently no rapid method to screen for all causative mutations simultaneously, typically this is done via Sanger or targeted next generation sequencing. The NeuroX (Nalls et al., 2015) is a customised Illumina HumanExome genotyping chip and the first version genotypes just under half of the currently known *APP/PSEN1/PSEN2* causative mutations (Cruts et al., 2012). In the light of emerging data demonstrating the role of rare

variants a successful genotyping array needs to contain all documented mutations. Updated versions of NeuroX will need to be more exhaustive before they can be used as a screening tool in both the research and clinical setting.

### 3.2 Genotyping rs367709245 in LOAD and controls

Screening of exon 16 and exon 17 of *APP* in 451 sEOAD identified five samples (Table 2) heterozygous for a 6 base pair (bp) intronic deletion (rs367709245, IVS17 83-88delAAGTAT) located downstream of exon 17 with a minor allele frequency (MAF) of 0.006. To assess the function of rs367709245 in other cohorts we genotyped 584 LOAD and 528 control samples, and identified four samples heterozygous for rs367709245, 2 in LOAD and 2 in control, both with a MAF of 0.002. Interestingly, this variant is 83 bp downstream of exon 17 and the A $\beta$  peptide is coded by exon 16 and 17 of *APP*; which are always retained during mRNA splicing. The deletion has only ever been seen in a heterozygous form and was first reported in 1992 (Kamino et al., 1992) in 3/98 LOAD families (MAF 0.02) where it co-segregated with AD in 2 of the LOAD families. It was also found in 1/207 age matched controls (MAF 0.002); however, it was not seen in 29 FAD families or 153 sporadic cases. It has since been identified by phase 3 of the 1000 genome project (1000 Genomes Project Consortium et al., 2012), where it was seen in 1/661 individuals of African ancestry (MAF 0.002) and in 2/346 individuals of Puerto Rican ancestry (MAF 0.006). rs367709245 has recently been seen in an exome sequencing project (n=11) conducted on individuals with schizophrenia who are of South African ancestry (MAF 0.05) (Drogemoller et al., 2014). It is clear that this is a rare variant (MAF < 0.01) and in order to have power to detect any association with disease or potentially age of onset, thousands of samples would need to be screened. Our study has 13% and 14% power for sEOAD and LOAD respectively, to achieve a power of 80% a total of over 10,000 samples would be needed (assuming a MAF of 0.002 and an odds ratio of 2).

### 3.3 Effect of rs367709245 on *APP* transcripts in COS7 and Be(2)-C cell lines

It is interesting to note that Human Splicing Finder 2.4.1 (Desmet et al., 2009) predicts rs367709245 to almost completely overlap (5 out of 6 bp) a consensus binding site for the splicing protein SRp55 (SFRS6), and that this protein is thought to promote exclusion of exon 10 in the gene *MAPT* (Yu et al., 2004), although its exact binding site has not yet been determined. It is well documented that deletions and single nucleotide polymorphisms (SNPs) at exon 10's acceptor or donor site in *MAPT* are sufficient to alter the splicing ratio of exon 10 and cause Frontotemporal Dementia with Parkinsonism linked to chromosome 17 (FTDP-17) (Liu and Gong, 2008), though none of these variants are located as far downstream as rs367709245 (83 bp). Given this we wanted to test if rs367709245 would affect splicing of exon 17 in *APP*. COS7 cells and Be(2)-C cells were transfected with minigene constructs with either rs367709245 or wild type insert. PCR of cDNA from these cells showed no alternative isoforms; a single amplicon was obtained of expected size in all instances (389 bp - Figure 2), and sequencing of all constructs confirmed exon 17 was retained. Additionally, PCR of cDNA from cerebellum and temporal cortex from a patient harbouring this deletion (rs367709245) showed no alternative isoforms; a single amplicon was obtained of expected size in both instances (253 bp - Figure 3) and sequencing of both cDNAs verified exon 17 was retained. Both approaches indicate a lack of alternative splicing in

the presence of rs367709245; given its location from the exon intron boundary (83 bp), it could be too far away to influence splicing.

ACCEPTED MANUSCRIPT

ACCEPTED MANUSCRIPT

#### 4 Conclusion

ACCEPTED MANUSCRIPT

We have highlighted the need to screen sEOAD cohorts for FAD patients who harbour exon 16/17 *APP* causative mutations; this holds especially true for sEOAD cohorts over LOAD; due to similar clinical presentation there is a greater chance of misclassification. Screening will help increase power to detect true genetic loci associated with the sporadic form of the disease. In addition, we identified a 6 bp deletion (rs367709245; IVS17 83-88delAAGTAT) in our sEOAD cohort with a non-significant increased MAF when compared to LOAD and controls. Due to lack of power we cannot say if rs367709245 is associated with disease; a much larger study with samples in the thousands would be needed to establish this. Minigene assays provided no evidence to suggest rs367709245 affects exon 17 splicing; however, we cannot rule out that it may have alternative functional effects on *APP* e.g. via gene regulation.

## **Acknowledgments**

ACCEPTED MANUSCRIPT

The University of Nottingham lab is funded by Alzheimer's Research UK and the Big Lottery Fund. IB's PhD studentship is jointly funded by Alzheimer's Research UK and the School of Life Sciences at The University of Nottingham. JB and RG's Fellowships are funded by The Alzheimer's Society.

ACCEPTED MANUSCRIPT

## References

- 1000 Genomes Project Consortium, Abecasis, G., Auton, A., Brooks, L., DePristo, M., Durbin, R., Handsaker, R., Kang, R., Marth, G., McVean, G., 2012. An integrated map of genetic variation from 1,092 human genomes. *Nature* 491, 56–65. doi:10.1038/nature11632
- Alzheimer's Association, 2014. 2014 Alzheimer's Disease Facts and Figures. *Alzheimer's Dement.* 10, e47–92.
- Brookmeyer, R., Corrada, M.M., Curriero, F.C., Kawas, C., 2002. Survival following a diagnosis of Alzheimer disease. *Arch. Neurol.* 59, 1764–1767.
- Cruts, M., Theuns, J., Van Broeckhoven, C., 2012. Locus-specific mutation databases for neurodegenerative brain diseases. *Hum. Mutat.* 33, 1340–1344. doi:10.1002/humu.22117
- Desmet, F., Hamroun, D., Lalande, M., Collod-Bérout, G., Claustres, M., Bérout, C., 2009. Human Splicing Finder: an online bioinformatics tool to predict splicing signals. *Nucleic Acids Res.* 37, e67. doi:doi: 10.1093/nar/gkp215
- Drogemoller, B., Niehause, D., Chiliza, B., Merwe, L., Asmal, L., Malhotra, A., Emsley, R., Warnich, L., 2014. Pattern of variation influencing antipsychotic treatment outcomes in South African first-episode schizophrenia patients. *Pharmacogenomics.* doi:doi: 10.2217/pgs
- Goate, A., Chartier-Harlin, M.-C., Mullan, M., Brown, J., Crawford, F., Fidani, L., Guiffra, L., Haynest, A., Irving, N., James, L., Mant, R., Newton, P., Rooke, K., Roques, P., Talbot, C., Pericak-Vance, M., Roses, A., Williamson, R., Rosser, M., Owen, M., Hardy, J., 1991. Segregation of a missense mutation in the amyloid precursor protein gene with familial Alzheimer's disease. *Nat. Lett.*
- Janssen, J.C., Beck, J.A., Campbell, T.A., Dickinson, A., Fox, N.C., Harvey, R.J., Houlden, H., Rossor, M.N., Collinge, J., 2003. Early onset familial Alzheimer's disease: Mutation frequency in 31 families. *Neurology* 60, 235–239.
- Kamino, K., Orr, H., Payami, H., Wijsman, M., Olson, M., Pulst, S., Anderson, L., O'dahl, S., Nemens, E., White, J., 1992. Linkage and Mutational Analysis of Familial Alzheimer Disease Kindreds for the APP Gene Region. *Am. J. Hum. Genet.* 51, 998–1014.
- Levy-lahad, E., Wasco, W., Poorkaj, P., Romano, D.M., Oshima, J., Pettingell, W.H., Yu, C., Jondro, P.D., Schmidt, S.D., Wang, K., Crowley, A.C., Fu, Y., Guenette, S.Y., Galas, D., Nemens, E., Wijsman, E.M., Bird, T.D., Schellenberg, G.D., Tanzi, R.E., 1995. Candidate Gene for the Chromosome 1 Familial Alzheimer ' s Disease Locus. *Science* (80- ).
- Liu, F., Gong, C.-X., 2008. Tau exon 10 alternative splicing and tauopathies. *Mol. Neurodegener.* 3, 8. doi:10.1186/1750-1326-3-8
- Nalls, M.A., Bras, J., Hernandez, D.G., Keller, M.F., Majounie, E., Renton, A.E., Saad, M., Jansen, I., Guerreiro, R., Lubbe, S., Plagnol, V., Gibbs, J.R., Schulte, C., Pankratz, N., Sutherland, M., Bertram, L., Lill, C.M., DeStefano, A.L., Faroud, T., Eriksson, N., Tung, J.Y., Edsall, C., Nichols, N., Brooks, J., Arepalli, S., Pliner, H., Letson, C., Heutink, P., Martinez, M., Gasser, T., Traynor, B.J., Wood, N., Hardy, J., Singleton, A.B., 2015. NeuroX, a fast and efficient genotyping platform for investigation of neurodegenerative diseases. *Neurobiol. Aging* 36, 1605.e7–1605.e12. doi:10.1016/j.neurobiolaging.2014.07.028
- Nicolas, G., Wallon, D., Charbonnier, C., Quenez, O., Rousseau, S., Richard, A., Rovelet-Lecrux, A., Coutant, S., Le Guennec, K., Bacq, D., Garnier, J., Olasso, R., Boland, A., Meyer, V., Deleuze, J., Munter, H., Bourque, G., Auld, D., Montpetit, A., Lathrop, M., Guyant-Maréchal, L., Martinaud, O., Pariente, J., Rollin-Sillaire, A., Pasquier, F., Le Ber, I., Sarazin, M., Croisile, B., Boutoleau-Bretonnière, C., Thomas-Antérion, C., Paquet, C., Sauvée, M., Moreaud, O., Gabelle, A., Sellal, F., Ceccaldi, M., Chamard, L., Blanc, F., Frebourg, T., Campion, D., Hannequin, D., 2015. Screening of dementia genes by whole-exome sequencing in early-onset Alzheimer's disease: input and lessons. *Eur J Hum Genet.* doi: 10.1038/ejhg.2015.173
- Ryman, D.C., Acosta-Baena, N., Aisen, P.S., Bird, T., Danek, A., Fox, N.C., Goate, A., Frommelt, P., Ghetti, B., Langbaum, J.B.S., Lopera, F., Martins, R., Masters, C.L., Mayeux, R.P., McDade, E., Moreno, S., Reiman, E.M., Ringman, J.M., Salloway, S., Schofield, P.R., Sperling, R., Tariot, P.N., Xiong, C., Morris, J.C., Bateman, R.J., 2014. Symptom onset in autosomal dominant Alzheimer disease: a systematic review and meta-analysis. *Neurology* 83, 253–60. doi:10.1212/WNL.0000000000000596

Sassi, C., Guerreiro, R., Gibbs, R., Ding, J., Lupton, M.K., Troakes, C., Lunnon, K., Al-Sarraj, S., Brown, K.S., Medway, C., Lord, J., Turton, J., Mann, D., Snowden, J., Neary, D., Harris, J., Bras, J., Morgan, K., Powell, J.F., Singleton, A., Hardy, J., 2014. Exome sequencing identifies 2 novel presenilin 1 mutations (p.L166V and p.S230R) in British early-onset Alzheimer's disease. *Neurobiol. Aging* 35, 2422.e13–2422.e16. doi:10.1016/j.neurobiolaging.2014.04.026

Sherrington, R., Rogaev, E., Liang, Y., Rogaeva, E., Levesque, G., Ikeda, M., Chi, H., Li, G., Holman, K., Tsuda, T., Mar, L., J, F., Bruni, A., Mentesi, M., Sorbi, S., Raino, I., Pinessi, L., Nee, L., Chumakov, I., Pollen, D., Brookes, A., Sanseau, P., Polinsky, R., Wasco, W., Silva, H., Haines, J., Pericak-Vance, M., Tanzi, R., Roses, A., Fraser, P., Rommens, J., St George-Hyslop, P., 1995. Cloning of a gene bearing missense mutations in early-onset familial Alzheimer's disease. *Nature*.

Yu, Q., Guo, J., Zhou, J., 2004. A minimal length between tau exon 10 and 11 is required for correct splicing of exon 10. *J. Neurochem.* 90, 164–172.

ACCEPTED MANUSCRIPT



**Tables**

**A. Sporadic early-onset Alzheimer’s disease (sEOAD)**

	N	Mean age at onset (±SD)	Females (%)	<i>APOE</i> ε4+ (%)	<i>APOE</i> ε4ε4 (%)	<i>APOE</i> ε4 MAF	Definite	Probable
Bristol	24	53.5 (5.3)	11 (45.8)	12 (50.0)	3 (12.5)	0.31	24	0
Manchester	356	57.3 (5.4)	171 (48.0)	211 (59.3)	49 (13.8)	0.56	61	295
Nottingham	37	58.5 (6.1)	18 (48.6)	17 (45.9)	2 (5.4)	0.26	7	30
Oxford	34	55.5 (4.2)	19 (55.9)	20 (58.8)	4 (11.8)	0.35	24	10
All	451	57.0 (5.5)	219 (48.6)	260 (57.6)	58 (12.9)	0.51	116	335

**B. Late-onset Alzheimer’s disease (LOAD)**

	N	Mean age at onset (±SD)	Females (%)	<i>APOE</i> ε4+ (%)	<i>APOE</i> ε4ε4 (%)	<i>APOE</i> ε4 MAF	Definite
Belfast	295	78.1 (6.3)	187 (63.4)	162 (54.6)	24 (8.1)	0.31	295
Bonn	115	75.6 (6.4)	84 (73.0)	69 (60.0)	19 (16.5)	0.38	115
Leeds	103	79.4 (6.1)	55 (53.4)	67 (65.0)	0 (0.0)	0.40	103
Nottingham	71	78.1 (6.0)	48 (67.6)	40 (56.3)	3 (4.2)	0.30	71
All	584	77.8 (6.4)	374 (63.9)	338 (57.8)	61 (10.4)	0.34	584

**C. Control**

	N	Mean age at death (±SD)	Females (%)	<i>APOE</i> ε4+ (%)	<i>APOE</i> ε4ε4 (%)	<i>APOE</i> ε4 MAF
Belfast	47	73.8 (5.3)	33 (70.2)	9 (19.1)	0 (0.0)	0.10
Bonn	134	74.9 (7.6)	74 (55.2)	41 (30.6)	3 (2.2)	0.16
Leeds	191	78.4 (5.7)	98 (51.3)	39 (20.4)	4 (2.1)	0.11
Manchester	3	83.7 (6.1)	2 (66.7)	0 (0.0)	0 (0.0)	0.00
Nottingham	111	77.4 (7.5)	41 (36.9)	22 (19.8)	0 (0.0)	0.10
Oxford	15	81.5 (6.3)	11 (73.3)	3 (20.0)	0 (0.0)	0.10
Southampton	27	77.1 (5.5)	12 (44.4)	6 (22.2)	0 (0.0)	0.11
All	528	76.9 (6.8)	271 (51.3)	120 (22.7)	7 (1.3)	0.12

**Table 1**

**Sample Demographics**

Sample demographics of each cohort; sporadic early-onset Alzheimer’s disease (sEOAD) (A), late-onset Alzheimer’s disease (LOAD) (B), and control (C). Each cohort contains samples from multiple centres with each centre represented one per row. The number of samples from each centre (N) is given along with the mean age of onset with standard deviation (Mean age at onset (±SD)), the number and percentage of female samples per centre (Females (%)), the number and percentage of samples harbouring at least one *APOE* ε4 allele (*APOE* ε4 + (%)), the number and percentage of samples with *APOE* ε4ε4 genotype (*APOE* ε4ε4 (%)), the minor allele frequency of the *APOE* ε4 allele (*APOE* ε4 MAF), and finally the number of samples classed as post mortem confirmed Alzheimer’s disease (Definite) or probable Alzheimer’s disease (Probable). Key: N, number of samples; SD, standard deviation.

Sample	Origin	Gender	Diagnosis	AAO	APOE $\epsilon$	Cohort	Variant
M562	Manchester, UK	Female	Definite AD	62	33	sEOAD	p.A713T
MRC045	Nottingham, UK	Female	Probable AD	61	34	sEOAD	p.A713T
O0691	Oxford, UK	Male	Probable AD	50	44	sEOAD	p.V717I
M758	Manchester, UK	Female	Probable AD	61	33	sEOAD	p.V717G
O0483	Oxford, UK	Male	Definite AD	51	34	sEOAD	rs367709245
M111	Manchester, UK	Female	Probable AD	54	33	sEOAD	rs367709245
M200	Manchester, UK	Female	Probable AD	63	33	sEOAD	rs367709245
M400	Manchester, UK	Female	Probable AD	50	34	sEOAD	rs367709245
M461	Manchester, UK	Female	Probable AD	64	44	sEOAD	rs367709245
LE328	Leeds, UK	Male	Definite AD	70	34	LOAD	rs367709245
LE431	Leeds, UK	Female	Definite AD	76	34	LOAD	rs367709245
BN1842	Bonn, Germany	Female	Non-diseased	68	33	Control	rs367709245
BN0424	Bonn, Germany	Female	Non-diseased	84	33	Control	rs367709245

**Table 2**

**Information of 13 individuals harbouring a causative mutation or the variant rs367709245**

Sample ID is given (Sample) along with the sample origin (Origin), gender (Gender), diagnosis (Diagnosis), age at onset of disease (AAO), APOE  $\epsilon$  status (APOE  $\epsilon$ ), the cohort the sample is from (Cohort), and finally the variant present (Variant) given as the protein change or reference SNP ID. Key: AAO, age at onset; sEOAD, sporadic early onset Alzheimer's disease; LOAD, late onset Alzheimer's disease.

**Figure 1****Sequence chromatograms from individuals harbouring known causative APP mutations**

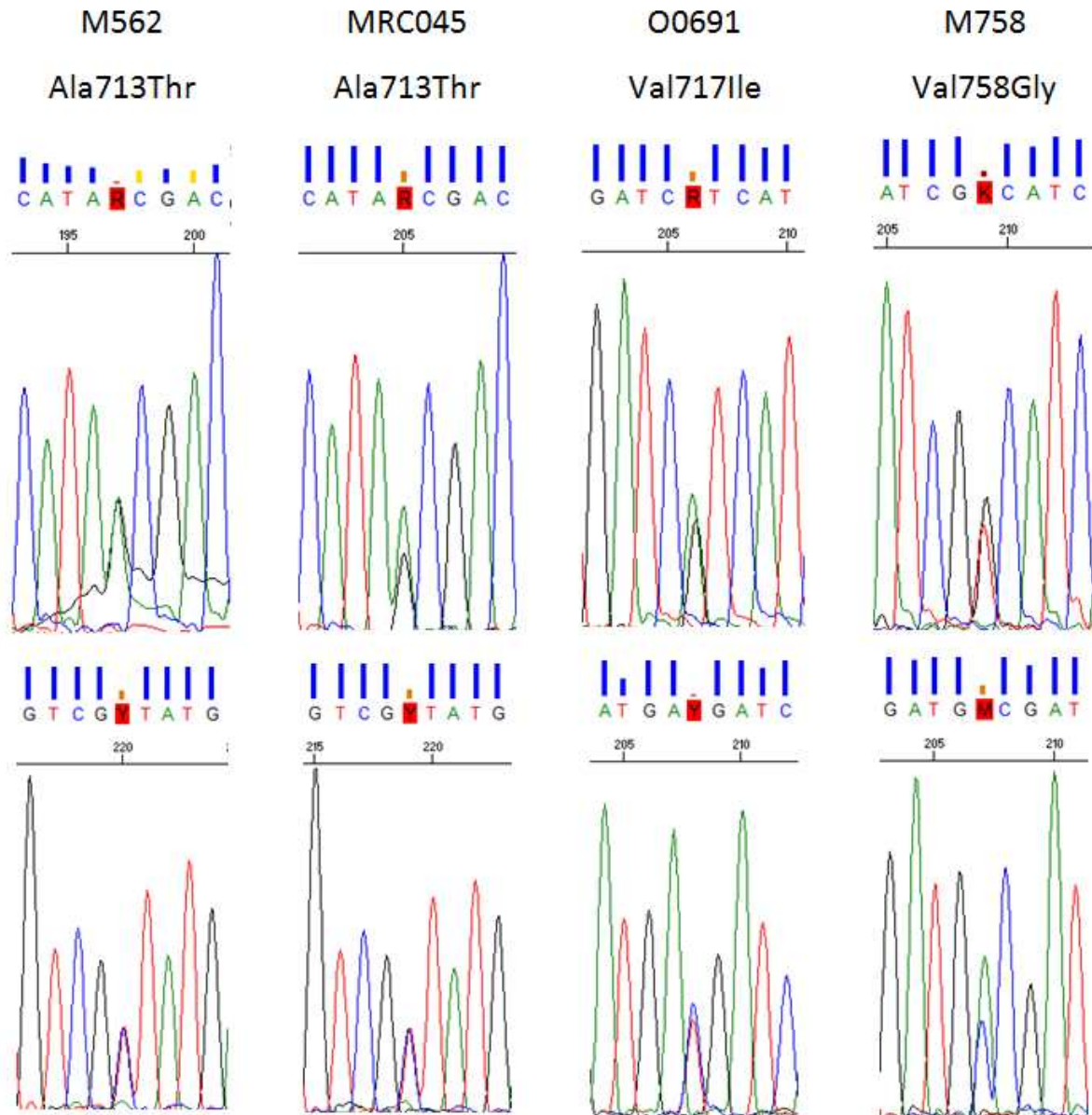
Each sample is presented one per column, with sample ID and mutation ID stated at the top and sequence chromatographs underneath. The chromatograms were generated using Sequence Scanner version 2 (Applied Biosystems) and show the heterozygous causative mutation at the centre with 8 surrounding bases. The top image in each column shows the sequence in the forward direction using primer E17F and the bottom image sequence in the reverse direction using primer E17R.

**Figure 2****RT-PCR products from cells transfected with vector containing wild type or variant insert (rs367709245)**

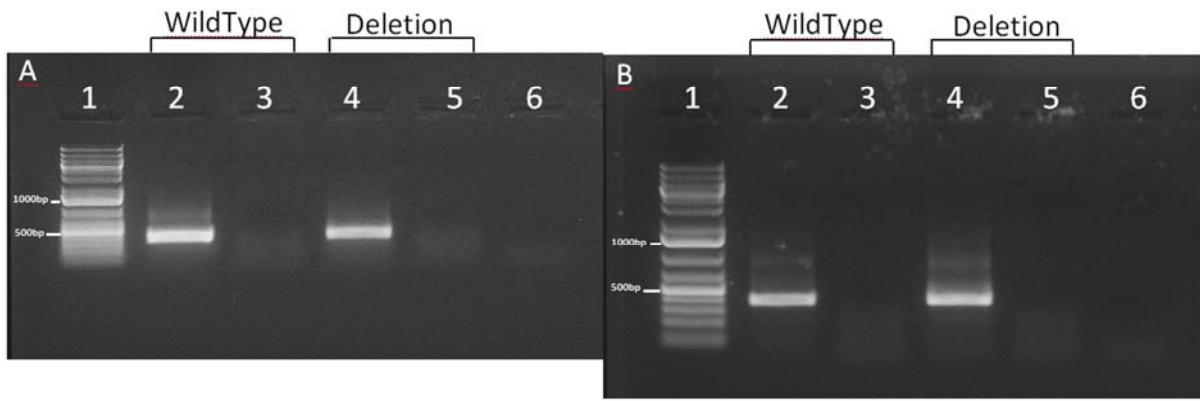
RT-PCR products from COS7 cells (A) and Be(2)-C cells (B) transfected with pET01 vector containing wild type or variant insert (rs367709245). Lane 1 contains the DNA ladder GeneRuler 1 kb Plus (Life Technologies) which has two reference bands; 1000 bp (top) and 500 bp (bottom). Lanes 2 contains the RT-PCR product from a colony harbouring vector with wild type insert, lane 3 being its respective RT-PCR negative control (no enzyme). Lanes 4 contains the RT-PCR product from a colony harbouring a variant insert (rs367709245) with lane 5 being its respective RT-PCR negative control (no enzyme). Lane 6 contains the RT-PCR negative control (no RNA).

**Figure 3****RT-PCR products from individual O0483 who harbours rs367709245.**

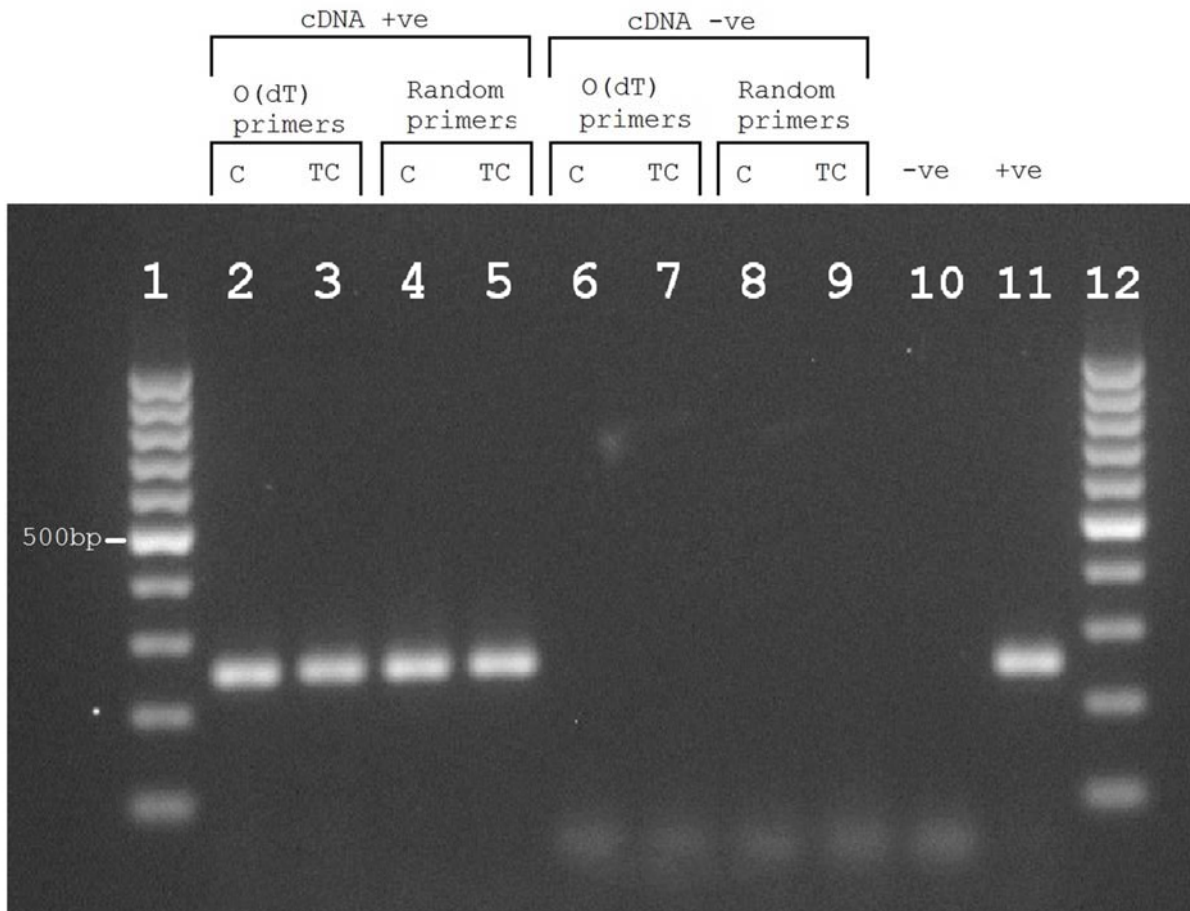
Reverse transcriptase polymerase chain reaction (RT-PCR) products generated using Oligo(dT) or random primers and RNA from individual (O0483) cerebellum (C) and Temporal cortex (TC). Lanes 1 and 12 contain GeneRuler 100 bp Plus DNA ladder (ThermoFisher Scientific) containing one reference band marked at 500bp. Lanes 2 and 3 contain the RT-PCR products generated using Oligo(dT) primers. Lanes 4 and 5 contain the RT-PCR product generated using random primers. Lanes 6 to 9 are the same as lanes 2 to 5 but with no reverse transcriptase enzyme (cDNA -ve). Lane 10 contains an RNA negative control (-ve) and lastly lane 11 contains a PCR positive control (+ve), which was cDNA generated from Lymphoblastoid cell lines from two individuals obtained from the NHGRI sample repository.



ACCEPTED



ACCEPTED MANUSCRIPT



ACCEPTED

We screened 541 sEOAD samples for familial mutations in *APP*

We found 4 sEOAD samples with known familial mutations

A 6bp deletion in *APP* intron 17 has a non-significant increased MAF in sEOAD cohort

We found no evidence to suggest the 6bp deletion effects exon 17 splicing

We highlight the importance to genetically screen sEOAD samples

ACCEPTED MANUSCRIPT