



Jones, C. R., Greenhalgh, M. D., Bame, J. R., Simpson, T. J., Cox, R. J., Marshall, J. W., & Butts, C. P. (2016). Subtle temperature-induced changes in small molecule conformer dynamics-observed and quantified by NOE spectroscopy. *Chemical Communications*, 52(14), 2920-2923. DOI: 10.1039/c5cc10509a

Publisher's PDF, also known as Version of record

Link to published version (if available):

[10.1039/c5cc10509a](https://doi.org/10.1039/c5cc10509a)

[Link to publication record in Explore Bristol Research](#)

PDF-document

This is the final published version of the article (version of record). It first appeared online via Royal Society of Chemistry at DOI: 10.1039/c5cc10509a. Please refer to any applicable terms of use of the publisher.

## University of Bristol - Explore Bristol Research

### General rights

This document is made available in accordance with publisher policies. Please cite only the published version using the reference above. Full terms of use are available:  
<http://www.bristol.ac.uk/pure/about/ebr-terms.html>



Cite this: *Chem. Commun.*, 2016, 52, 2920

Received 23rd December 2015,  
Accepted 15th January 2016

DOI: 10.1039/c5cc10509a

www.rsc.org/chemcomm

## Subtle temperature-induced changes in small molecule conformer dynamics – observed and quantified by NOE spectroscopy†

C. R. Jones,<sup>a</sup> M. D. Greenhalgh,<sup>a</sup> J. R. Bame,<sup>a</sup> T. J. Simpson,<sup>a</sup> R. J. Cox,<sup>ab</sup>  
J. W. Marshall<sup>a</sup> and C. P. Butts\*<sup>a</sup>

**NOE–distance relationships are shown to be sufficiently accurate to monitor very small changes in conformer populations in response to temperature (<0.5%/10 °C) – in good agreement with Boltzmann-predictions, illustrating the effectiveness of accurate NOE–distance measurements in obtaining high quality dynamics as well as structural information for small molecules.**

The measurement of solution-state conformational dynamics of small molecules is a challenging problem for numerous fields. Drug-design, mechanistic studies and understanding of intermolecular interactions are all reliant on the assessment of dynamic behaviour of flexible molecules in the solution state. Nuclear Overhauser effect (NOE) measurements in NMR spectroscopy are well established as a tool to determine stereochemical and conformational details of molecular structure.<sup>1</sup> We and others have recently defined the accuracy of quantitative NOE–distance analysis in both small molecules<sup>2–4</sup> and proteins,<sup>5–7</sup> thus providing more precise methods for probing the details of these. Herein, we report that even very small changes in small molecule conformational dynamics – such as those caused by temperature – can be quantified accurately in solution by NOE techniques.

Traditionally, NMR data for small molecules from solution-state measurements *e.g.* chemical shifts, coupling constants and NOEs, have been used to elucidate gross conformation. However, they have been considered less useful for drawing detailed structural conclusions such as the small population changes engendered by conformational dynamics in response to stimuli *e.g.* binding or changes in temperature, solvent, *etc.* Instead, such analyses rely on computation – specifically calculated conformer energies (and thus populations) in order to interpret results. While often applied, this reliance on energy

calculations is ultimately unsatisfactory. Energies (and thus populations) calculated by standard computational methods, *e.g.* molecular mechanics or Density Functional Theory (DFT), struggle to achieve chemical accuracy. Indeed, only the most advanced composite computational methods, such as Gaussian-4,<sup>8</sup> can obtain energies considered to be accurate to much less than 1 kcal mol<sup>-1</sup> and these can take days-to-weeks to complete and require high levels of expertise. This inaccuracy is a severe impediment for conformational analysis as even optimistic assumptions of accuracy in computed energies, say, ±2 kJ mol<sup>-1</sup>, could accommodate a range of conformer populations *e.g.* it could accommodate two conformers with 30:70 or 70:30 population ratios at room temperature, *i.e.* the population of each conformer could more than double or halve depending on the error in calculation. This has led to the use of quantitative NMR-based population analysis, exemplified by the NAMFIS (NMR Analysis of Molecular Flexibility In Solution)<sup>9</sup> approach exploited in the DISCON software package.

With this in mind, we have recently demonstrated that interproton distance information obtained from NOE experiments in NMR spectroscopy can accurately assess the population of small molecule conformers in solution without relying on accurately calculated conformer energies.<sup>3,4</sup> Indeed, in these cases conformer populations can be accurately refined on the basis of NOE-derived distances and calculated conformer geometries (which are computationally inexpensive) alone. We have further demonstrated the potential of high accuracy NOE–distance analysis for solving intractable stereochemical problems *e.g.* a doubly quaternary epoxide in the marine natural product conicasterol,<sup>10</sup> and conformational challenges such as highly flexible conformationally biased synthetic homologated alkanes.<sup>11</sup>

Herein we extend the limits of high accuracy NOE–distance determination in conformational analysis of small molecules by observing subtle temperature-induced changes in conformer populations in solution (<0.5%/10 °C).

The temperature dependence of NOE measurements in proteins, corresponding to substantial conformational changes, is well established in semi-quantitative fashion in a range of systems.<sup>12</sup>

<sup>a</sup> School of Chemistry, University of Bristol Cantocks Close, Bristol, BS8 1TS, UK.  
E-mail: Craig.Butts@bristol.ac.uk

<sup>b</sup> Leibniz Universität Hannover, Institut für Organische Chemie, Schneiderberg 1B,  
30167 Hannover, Germany

† Electronic supplementary information (ESI) available. See DOI: 10.1039/c5cc10509a



Leitz *et al.* have shown recently that the temperature dependence of  $^1\text{H}_\text{N}-^1\text{H}_\text{N}$  distances can be quantitatively analysed using NOE/cross-relaxation rates (based on fitting of the NOE build-up curves to derivations of the Solomon equation for three dipolar-coupled spins) in a deuterated example of the protein ubiquitin.<sup>13</sup> While highly accurate, these methods are complex both experimentally, requiring high levels of deuteration, and in terms of data analysis. They also rely heavily on the established nature of protein dynamics which is not conveniently or generally applicable to small molecules.

In the realm of small molecules, there has been very little high accuracy NOE-assessment of temperature on conformational behaviour. Urakawa *et al.* reported on the effect of temperature on NOE-distance analysis of the conformational behaviour of the alkaloid cinchonidine,<sup>14</sup> however the data presented was not consistent with Boltzmann behaviour. Their NOESY-DFT fit analysis on increasing the temperature from 280 to 320 K suggested a decrease in “open” conformer populations from 83 to 70%, and a concomitant doubling of “closed” conformer populations from 17 to 30%. This is somewhat surprising as a simple Boltzmann analysis suggests that this 40 K temperature range should only change the populations from  $\sim 78\%$  to  $\sim 73\%$  (open) and  $\sim 22\%$  to  $\sim 27\%$  (closed) given the NOESY-DFT fit at 300 K (75% open, 25% closed) and whether this small effect should even be observable in the NOE data (which is only sensitive to short distances) of cinchonidine is not discussed.

To test the sensitivity of high-accuracy NOE-distance analysis to changes in small molecule conformational dynamics, we re-examined the report of Urakawa *et al.* 1D-NOESY spectra were acquired at 298 K and 323 K on quinine, which differs from cinchonidine only by the addition of a methoxy group, and has been shown to yield an analogous distribution of open and closed conformers.<sup>15,16</sup> In line with our expectations, the changes in NOE intensities for protons in the conformationally mobile portions of quinine from spectra at 298 K and 323 K were minimal and no greater than those between protons in immobile portions, *e.g.*  $\text{CH}_2$  units. This strongly suggests that the time-averaged interproton distances change by much less than the inherent error in the NOE measurements and any temperature effects reported for cinchonidine previously were within experimental error of the NOE analysis performed (Urakawa *et al.* themselves suggest distance errors of  $\pm 10\%$  for their data, which corresponds to  $\sim 75\%$  errors in NOE intensity). Consequently, it seems appropriate to apply high accuracy NOE-distance analysis to small molecule examples where temperature should be expected (*vide infra*) to induce measurable changes in the conformational distribution, in this case two examples – a synthetic lactone (5-methyl-4(*E*)-styryl)dihydrofuran-2(3*H*)-one) **1** and strychnine.

Lactone **1** (Fig. 1) is a secondary metabolite produced by the Gammaproteobacterium *Photorhabdus luminescens*<sup>17</sup> but was generated by synthesis for this study. Rotation around the C4–C6 bond of **1** results in a number of conformers where the interproton distance between the ring proton H5 and the alkene proton H7 is either  $\sim 4.0$  Å or  $\sim 2.2$  Å. We have shown previously that this situation can give rise to very sensitive NOE-detection of conformer populations at room temperature.<sup>4</sup>

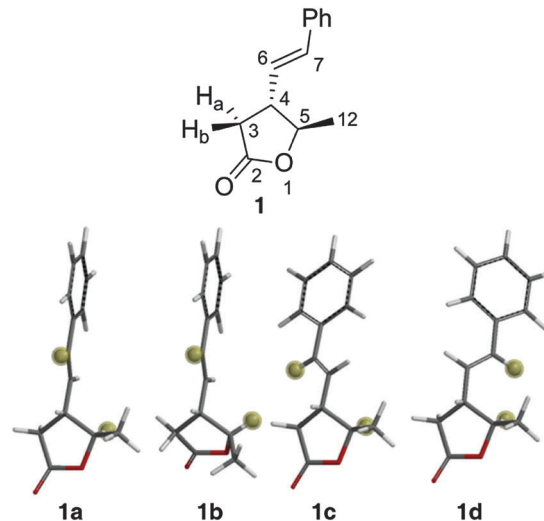


Fig. 1 Labeled structure of lactone **1** (above) and low energy conformers (below) with H5 and H7 highlighted for clarity.

A conformational search<sup>18</sup> at the MMFFs level found 12 conformers of **1** within  $50 \text{ kJ mol}^{-1}$  of the global minimum. After DFT geometry optimisation (B3LYP/6-31g\*)<sup>19</sup> 6 conformers remained within  $50 \text{ kJ mol}^{-1}$  – differing in their torsion angles around the C4–C6 bond and the conformation of the 5-membered ring. The energies of these conformers were then subjected to zero-point, thermal and entropic corrections and inclusion of solvation free energies (see ESI† for details). At this point only four of the conformers, **1a**, **1b**, **1c** and **1d** (Fig. 1) were found to have energies within  $15 \text{ kJ mol}^{-1}$  ( $>0.2\%$  population) of the global minimum conformer (**1a**) – the other two conformers were thus not considered further. **1a**, **1c** and **1d** have the same ring conformation, but **1b** (and the two excluded high-energy conformers) have a second envelope ring conformation. The relative calculated free energies of **1a**, **1b**, **1c** and **1d**, along with their corresponding (Boltzmann) populations at  $25^\circ\text{C}$  are shown (labelled ‘DFT’) in Table 1.

NOE-derived  $^1\text{H}-^1\text{H}$  distances<sup>‡</sup> for all protons of **1** were first obtained at  $25^\circ\text{C}$  from 1D-NOESY spectra. NOE build-up curve analysis using the PANIC method<sup>20</sup> showed linear build-up to around 800 ms, and therefore a mixing time of 500 ms was deemed sensible. We have previously demonstrated that NOE-distance analysis, using PANIC to correct for external relaxation effects, provides very accurate assessments of conformer populations at room temperature<sup>3</sup> – with equal or greater accuracy than standard DFT computational methods – hence, the populations of conformers **1a**, **1b**, **1c** and **1d** were recalculated

Table 1 DFT and NOE-derived relative free energies for **1** in solution of the lactone conformers and their corresponding populations at  $25^\circ\text{C}$

	H5–H7 distance/Å	DFT $\Delta G_{\text{soliv}}/\text{kJ mol}^{-1}$	DFT popul./%	NOE $\Delta G_{\text{soliv}}/\text{kJ mol}^{-1}$	NOE popul./%
<b>1a</b>	4.34	0.0	89.3	0.0	79.3
<b>1b</b>	3.90	6.9	5.6	6.4	6.0
<b>1c</b>	3.92	8.1	3.4	4.7	11.9
<b>1d</b>	2.16	10.3	1.4	8.3	2.8



(labelled 'NOE' in Table 1) so that the conformer-weighted NOEs fitted best with the NOE-derived distances at 25 °C (Table S6, ESI,† Mean Absolute Error = 2.7%). The effective relative energies derived from the NOE-populations are also shown in Table 1 and all subsequent discussion and temperature analyses were performed using these NOE-derived relative energies and populations.

Interproton distances for H5 were then examined across a temperature range of −15 °C to +45 °C by measuring the relative NOE intensities from H5 to H7, H6, Me12 and H3a at each temperature. The average H5–H7, H5–H6 and H5–H3a NOE-derived distances were calculated relative to the H5–Me12 distance (2.88 Å) which is constant in all conformers and is temperature-insensitive.

Based on the room temperature NOE-derived populations (and thus relative energies) in Table 1, then increasing the temperature from −15 °C to +45 °C will change the populations for **1a**, **1b**, **1c** and **1d** from 84.5/4.2/9.5/1.8% to 76.8/6.8/13.0/3.4% respectively and thus decrease the time-averaged interproton distance between H5 and H7 from 3.78 Å to 3.55 Å (a change of 6.2%). On the other hand, the average H5–H3a and H5–H6 distances should be substantially less sensitive to temperature effects, with predicted changes of +0.01 Å and +0.02 Å (<1%) respectively.

In the event, the NOE-derived interproton distances for H5 of lactone **1** (Fig. 2) fit extremely well with the predicted trend, with the average H5–H7 distance decreasing by ~5% from 3.74 Å to 3.55 Å as temperature increases from −15 °C to +45 °C. Meanwhile the H5–H3a and H5–H6 NOE-derived distances vary very little (<0.06 Å, <2%) across the same temperature range, within the expected 3% error bounds of each NOE-distance measurement – supporting the proposal that the H5–H7 NOE-distance changes are indeed derived from the perturbation of conformer populations.

Further confirmation of the sensitivity of NOE-distance analysis to subtle changes in conformer populations is provided by applying this same analysis to temperature effects on the interproton

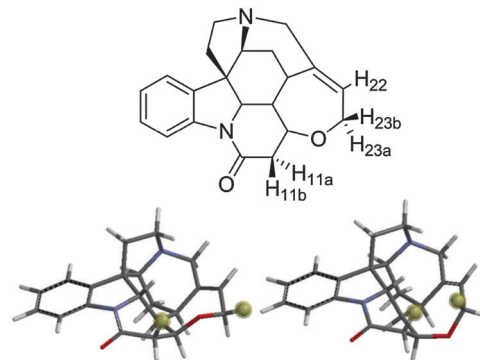


Fig. 3 Strychnine with key protons labelled (above) with major (~98%, lower left) and minor (~2%, lower right) conformers with H11b and H23b highlighted for clarity.

distances of strychnine. We recently reported a very low level second conformer of strychnine (Fig. 3)<sup>4</sup> based on the observation that the H11b–H23b intra-ring NOE-distance was ~0.6 Å (15%) shorter than expected on the basis of X-ray crystallographic results<sup>21</sup> and DFT calculations.<sup>22</sup> The H11b–H23b distance for the minor conformer of strychnine was approximately half that of the major conformer (2.11 Å vs. 4.10 Å), and was assessed to have a population of ~2% (corresponding to a 9–10 kJ mol<sup>−1</sup> free energy difference) compared to the major conformer (Fig. 3). This situation mirrors that of the lactone **1** example, *vide supra*, so increasing temperature should also cause a shortening of the H11b–H23b NOE-derived distance for strychnine.

1D-NOESY spectra were obtained across a temperature range of −30 °C to +45 °C for H23b of strychnine in toluene-*d*<sub>8</sub>, and measuring the relative NOE intensities for H11b and H22.

The H11b–H23b NOE-derived distance was calculated relative to the H23b–H22 distance, which is ~2.39 Å for all temperatures studied. § The populations of the major and minor conformers were recalculated to give the best fit to the NOE-derived distances at 5 °C (98.0:2.0%) and all temperature analyses were subsequently performed on this basis. Increasing the temperature from −30 °C to +45 °C should thus correspond to a Boltzmann population change from 98.9/1.1% to 95.9/4.1%. This would decrease the NOE-observed interproton distance between H11b and H23b by 10.1% from 3.79 Å to 3.38 Å. Experimentally the NOE-derived distances across the temperature range of −30 °C to +45 °C (Fig. 4) fit very well with this predicted trend, falling by 11.8% from 3.80 Å to 3.35 Å over the 75 K temperature range, corresponding to a predicted population change of 99.2/0.8% to 96.6/3.4%. Due to the limited solubility of strychnine in toluene-*d*<sub>8</sub> and the increasing losses from relaxation at high temperatures, the H11b–H23b NOE data became very weak at the highest temperatures however the distance measured at each temperature was still reliably within the 3–4% error limits we have observed in studies of static molecular examples.

It is important to consider that the relative intensities of the NOEs also depend on the relative rates of molecular tumbling and conformer exchange (and both change with temperature). However, this will only substantially affect the experimental

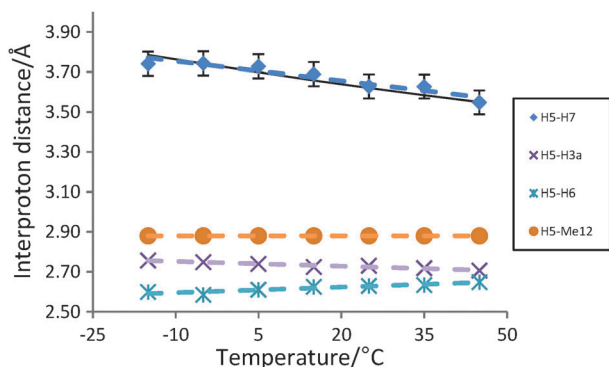


Fig. 2 NOE-derived interproton distances for **1** over the temperature range −15 to +45 °C. Lines of best fit are represented by dashed lines. Expected Boltzmann-derived distances for H5–H7 are illustrated with the thick black line (based on NOE-predicted populations). Error bars for the H5–H7 distance represent the reproducibility of the NOE measurements over triplicate repeats at each temperature.



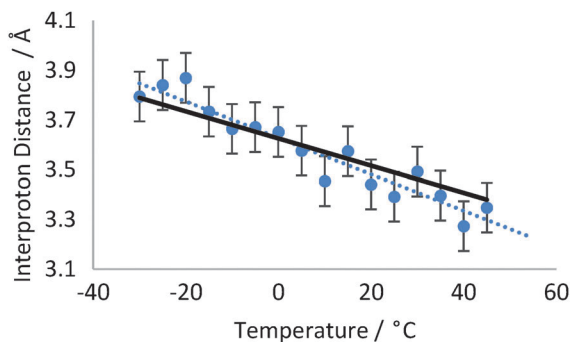


Fig. 4 NOE-derived distances for H23b–H11b over the temperature range  $-15$  to  $+65$  °C. Expected Boltzmann-derived distances are illustrated with the thick black line (based on NOE-derived populations) and error bars represent the reproducibility of the distance measurement.

NOE–distance relationship if the conformer exchange rate is fast relative to the tumbling rate at some temperatures.  $^{13}\text{C}$   $T_1$  measurements and molecular dynamics simulations were used to estimate the rate of molecular tumbling and conformer exchange rates respectively, for both **1** and strychnine, and suggest that conformer exchange is occurring substantially slower than overall molecular tumbling across all temperatures (see ESI,<sup>†</sup> for full details). Hence, the effects of the temperature change on the kinetics of the internal motion are not treated further here. Another source of potential perturbation by temperature is its effect on external relaxation for each NOE, however the use of PANIC-corrected,<sup>20</sup> rather than absolute, NOE intensities here implicitly largely corrects for external relaxation effectively minimising any temperature-induced contributions.

In conclusion, measurement of high accuracy NOE–distances allows the observation of very small temperature-induced conformational changes in solution, in good agreement with the expected Boltzmann behaviour. Such discrimination could have potential applications in examining detailed changes in molecular conformation in solution under a variety of circumstances *e.g.* intermolecular binding and changes in external conditions (solvent, temperature, pH). For fast tumbling small molecules, the limitations of this technique are primarily based in describing the conformational space of the molecule to be examined *i.e.* ensuring that conformational searching captures all contributing conformers, however this method has the substantial advantage that high accuracy energy calculations are not required in order to make quantitative interpretations of the populations of identified species.

We thank the University of Bristol for funding for CRJ, BBSRC and Mark Evans Scholarship for funding JWM and the

Bristol Chemical Synthesis Doctoral Training Centre, funded by EPSRC(EP/G036764/1) for a studentship for MDG.

## Notes and references

‡ The determination of interproton distances from NOE data is based on comparison of relative NOE intensities for pairs of spins in 1D-transient experiments. Full details of the method and analysis can be found in the ESI.<sup>†</sup>

§ The H23b–H22 distance is 2.39 Å in the major conformer and 2.51 Å in the minor conformer, but the contribution of the minor isomer affects the NOE-observed distance by  $<0.01$  Å over the temperature range studied, hence is considered insensitive to temperature herein.

- D. Neuhaus and M. P. Williamson, *The Nuclear Overhauser Effect in Structural and Conformational Analysis*, Wiley-VCH, New York, 2 edn, 2000.
- C. P. Butts, C. R. Jones, E. C. Towers, J. L. Flynn, L. Appleby and N. J. Barron, *Org. Biomol. Chem.*, 2011, **9**, 177–184.
- C. R. Jones, C. P. Butts and J. N. Harvey, *Beilstein J. Org. Chem.*, 2011, **7**, 145–150.
- C. P. Butts, C. R. Jones and J. N. Harvey, *Chem. Commun.*, 2011, **47**, 1193–1195.
- B. Vogeli, M. Friedmann, D. Leitz, A. Sobol and R. Riek, *J. Magn. Reson.*, 2010, **204**, 290–302.
- B. Vogeli, S. Kazemi, P. Guntert and R. Riek, *Nat. Struct. Mol. Biol.*, 2012, **19**, 1053–1057.
- B. Vogeli, S. Olsson, R. Riek and P. Guntert, *J. Struct. Biol.*, 2015, **191**, 306–317.
- L. A. Curtiss, P. C. Redfern and K. Raghavachari, *J. Chem. Phys.*, 2007, **126**, 084108.
- D. O. Cicero, G. Barbato and R. Bazzo, *J. Am. Chem. Soc.*, 1995, **117**, 1027–1033.
- M. G. Chini, C. R. Jones, A. Zampella, M. V. D'Auria, B. Renga, S. Fiorucci, C. P. Butts and G. Bifulco, *J. Org. Chem.*, 2012, **77**, 1489–1496.
- M. Burns, S. Essafi, J. R. Bame, S. P. Bull, M. P. Webster, S. Balieu, J. W. Dale, C. P. Butts, J. N. Harvey and V. K. Aggarwal, *Nature*, 2014, **513**, 183–188.
- See for example: M. Iwadata, T. Asakura and M. P. Williamson, *Eur. J. Biochem.*, 1998, **257**, 479–487; S. L. Chang, A. Szabo and N. Tjandra, *J. Am. Chem. Soc.*, 2003, **125**, 11379–11384; S. Ramboarina and C. Redfield, *J. Am. Chem. Soc.*, 2008, **130**, 15318–15326.
- D. Leitz, B. Vogeli, J. Greenwald and R. Riek, *J. Phys. Chem. B*, 2011, **115**, 7648–7660.
- A. Urakawa, D. M. Meier, H. Rugger and A. Baiker, *J. Phys. Chem. A*, 2008, **112**, 7250–7255.
- H. Caner, P. U. Biedermann and I. Agranat, *Chirality*, 2003, **15**, 637–645.
- T. H. A. Silva, A. B. Oliveira and W. B. DeAlmeida, *Struct. Chem.*, 1997, **8**, 95–107.
- R. Kontnik, J. M. Crawford and J. Clardy, *Chem. Biol.*, 2010, **5**, 659.
- (a) *MacroModel, version 8.5*, Schrödinger LLC, New York, 2003; (b) F. Mohamadi, N. G. Richards, W. C. Guida, R. Liskamp, M. Lipton, C. Caufield, G. Chang, T. Hendrickson and W. C. Still, *J. Comput. Chem.*, 1990, **11**, 440.
- M. J. Frisch, *et al.*, *Gaussian 09, Revision A1*, Gaussian, Inc., Wallingford CT, 2009. See ESI,<sup>†</sup> for full reference.
- H. T. Hu and K. Krishnamurthy, *J. Magn. Reson.*, 2006, **182**, 173–177.
- M. Messerschmidt, S. Scheins and P. Luger, *Acta Crystallogr., Sect. B: Struct. Sci.*, 2005, **61**, 115–121.
- A. Bagno, F. Rastrelli and G. Saielli, *Chem. – Eur. J.*, 2006, **12**, 5514–5525.

