

Evolution of Magnetic Helicity During Eruptive Flares and Coronal Mass Ejections

E.R. Priest¹ · D.W. Longcope² · M. Janvier^{3,4}

Received: 12 December 2015 / Accepted: 14 July 2016

© The Author(s) 2016. This article is published with open access at Springerlink.com

Abstract During eruptive solar flares and coronal mass ejections, a non-potential magnetic arcade with much excess magnetic energy goes unstable and reconnects. It produces a twisted erupting flux rope and leaves behind a sheared arcade of hot coronal loops. We suggest that the twist of the erupting flux rope can be determined from conservation of magnetic flux and magnetic helicity and equipartition of magnetic helicity. It depends on the geometry of the initial pre-eruptive structure. Two cases are considered, in the first of which a flux rope is not present initially but is created during the eruption by the reconnection. In the second case, a flux rope is present under the arcade in the pre-eruptive state, and the effect of the eruption and reconnection is to add an amount of magnetic helicity that depends on the fluxes of the rope and arcade and the geometry.

Keywords Sun: flares · Sun: magnetic topology · Magnetic reconnection · Helicity

1. Introduction

The standard understanding of eruptive solar flares (*e.g.*, Schmieder and Aulanier, 2012; Priest, 2014; Aulanier, 2014; Janvier, Aulanier, and Démoulin, 2015) is that excess magnetic energy and magnetic helicity build up until a threshold is reached at which point the magnetic configuration either goes unstable or loses equilibrium, either by breakout (Antiochos, DeVore, and Klimchuk, 1999; DeVore and Antiochos, 2008) or magnetic catastrophe (Démoulin and Priest, 1988; Priest and Forbes, 1990; Forbes and Isenberg, 1991; Lin and Forbes, 2000; Wang, Shen, and Lin, 2009) or kink instability (Hood and Priest, 1979) or by

✉ E.R. Priest
erp@st-andrews.ac.uk

¹ School of Mathematics and Statistics, University of St. Andrews, Fife KY16 9SS, Scotland, UK

² Dept. of Physics, Montana State University, Bozeman, MT, USA

³ School of Science and Engineering, University of Dundee, DD1 4HN, Dundee, UK

⁴ Institut d'Astrophysique Spatiale, UMR8617, Univ. Paris-Sud-CNRS, Université Paris-Saclay, Bâtiment 121, 91405 Orsay Cedex, France

torus instability (Lin *et al.*, 1998; Kliem and Török, 2006; Démoulin and Aulanier, 2010; Aulanier *et al.*, 2010; Aulanier, Janvier, and Schmieder, 2012).

Some solar flares (known as *eruptive flares*) are associated with the eruption of a magnetic structure containing a prominence (observed as a coronal mass ejection) and typically produce a two-ribbon flare, with two separating H α ribbons joined by a rising arcade of flare loops. Others are contained and exhibit no eruptive behaviour. While some coronal mass ejections are associated with eruptive solar flares, others occur outside active regions and are associated with the eruption of a quiescent prominence. Coronal mass ejections outside active regions do not produce high-energy products, because their magnetic and electric fields are much smaller than in eruptive solar flares, but their magnetic origin and evolution may well be qualitatively the same.

Magnetic helicity is a measure of the twist and linkage of magnetic fields, and its basic properties were developed by Woltjer (1958), Taylor (1974), Moffatt (1978), Berger and Field (1984), Berger and Ruzmaikin (2000) and Demoulin, Pariat, and Berger (2006). It was first suggested to be important in coronal heating, solar flares and coronal mass ejections by Heyvaerts and Priest (1984), who proposed that, when the stored magnetic helicity is too great, it may be ejected from the Sun in an erupting flux rope (see also Rust and Kumar, 1994; Low and Berger, 2003; Kusano *et al.*, 2002). The flux of magnetic helicity through the photosphere, its buildup in active regions and its relation to sigmoids has been studied by Pevtsov, Canfield, and Metcalf (1995), Canfield and Pevtsov (1998), Canfield, Hudson, and McKenzie (1999), Canfield, Hudson, and Pevtsov (2000), Pevtsov and Latushko (2000), Pevtsov (2002), Green *et al.* (2002), Pariat *et al.* (2006), and Poisson *et al.* (2015).

Indeed, the measurement of magnetic helicity in the corona is now a key topic with regard to general coronal evolution (Chae, 2001; Démoulin *et al.*, 2002; Mandrini *et al.*, 2004; Zhang, Flyer, and Low, 2006; Zhang and Flyer, 2008; Mackay, Green, and van Ballegoijen, 2011; Mackay, DeVore, and Antiochos, 2014; Gibb *et al.*, 2014). Also, since magnetic helicity is well conserved on timescales smaller than the global diffusion time, measuring it in interplanetary structures such as flux ropes and magnetic clouds (Gulisano *et al.*, 2005; Qiu *et al.*, 2007; Hu *et al.*, 2014; Hu, Qiu, and Krucker, 2015) allows us to link the evolution of CMEs in the solar wind with their source at the Sun (Nindos, Zhang, and Zhang, 2003; Luoni *et al.*, 2005).

The common scenario described above for an eruptive solar flare or coronal mass ejection is that, after the slow buildup of magnetic helicity in a magnetic structure, the eruption is triggered and drives three-dimensional reconnection which adds energy to post-flare loops. Originally, it was thought that all of the magnetic energy stored in excess of potential would be released during a flare, and therefore that the final post-flare state would be a potential magnetic field. However, the modern realisation is that magnetic helicity conservation provides an extra constraint, which produces a different final state. It is also observed that flare loops in an eruptive flare do not relax to a potential state, since the low-lying loops remain quite sheared (Asai *et al.*, 2004; Warren, O'Brien, and Sheeley, 2011; Aulanier, Janvier, and Schmieder, 2012). Our aim in this paper is to determine two key observational consequences of the reconnection process, namely, the amount of magnetic helicity, and therefore twist, in the erupting flux rope, and in the shear of the underlying flare loops.

We determine the magnetic helicity in the erupting flux rope and underlying flare loops in two cases. In the first (Figure 1), no flux rope is present in the initial arcade, but a flux rope is created during the process of the reconnection. In the second case (Figure 2), the initial state consists of a magnetic arcade that overlies a flux rope, and the effect of the eruption and reconnection is to enhance the flux and twist of the flux rope. Our aim is to produce the simplest model that preserves the core physics of the process. For example, we

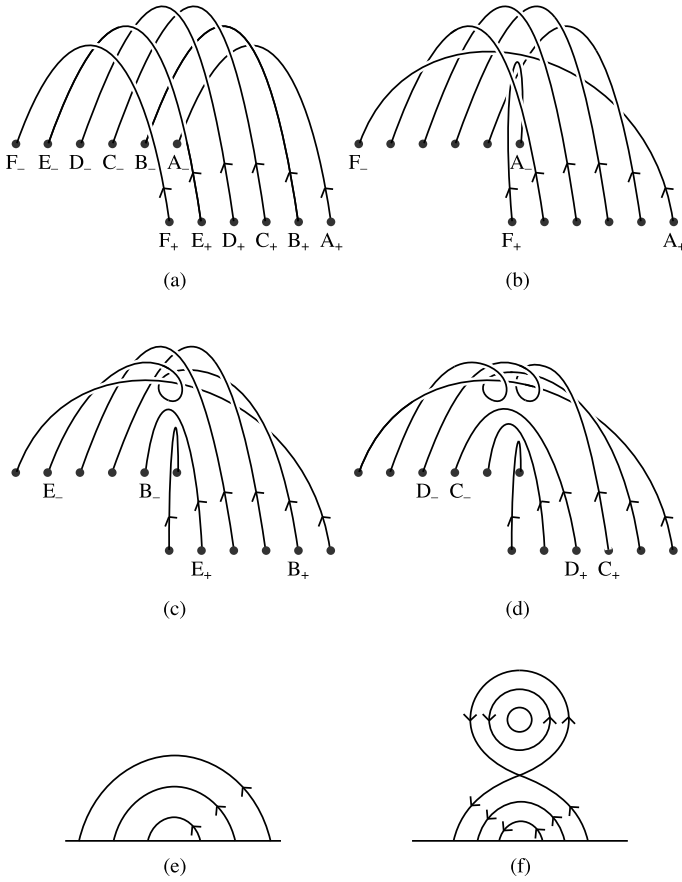


Figure 1 (a) A simple sheared arcade that reconnects to produce (d) an erupting flux rope plus an underlying less-sheared arcade. In the initial state (a), footpoints A_+ , B_+ , C_+ , D_+ , E_+ , F_+ , are joined to footpoints A_- , B_- , C_- , D_- , E_- , F_- , respectively. In the first stage, shown in (b), loops A_+A_- and F_+F_- have reconnected to give new loops A_+F_- and F_+A_- . In the second stage, shown in (c), loops B_+B_- and E_+E_- have reconnected to give new loops B_+E_- and E_+B_- . Then in the final stage, shown in (d), loops C_+C_- and D_+D_- have reconnected to give a twisted flux rope C_+D_- that may erupt and a set of underlying loops D_+C_- . (e) and (f) show a projection of the field lines onto a vertical section through the configuration, looking from the left, in the initial (left) and final state (right) during the eruption.

neglect the internal structure of the coronal arcade and model it simply as a flux rope whose photospheric footpoints are stretched out in two lines either side of the polarity inversion line. The second case (with the initial flux rope) is much more likely to go unstable and erupt.

We calculate the twist in the erupting flux rope from the properties of the initial pre-eruptive state by making three assumptions, namely:

- i) conservation of magnetic flux;
- ii) conservation of magnetic helicity;
- iii) and equipartition of magnetic helicity.

The third assumption implies that the same amount of magnetic helicity is transferred by reconnection to the erupting flux rope and underlying arcade (Wright and Berger, 1989). We

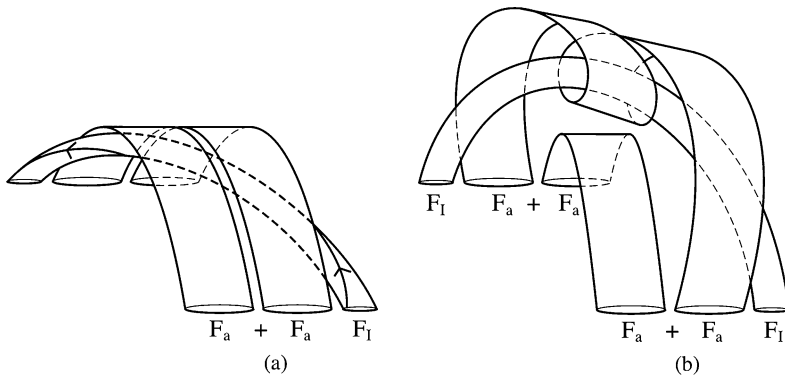


Figure 2 (a) A sheared arcade overlying a flux rope reconnects to produce (b) an erupting flux rope plus an underlying less-sheared arcade.

have considered an alternative possibility, namely, preferential transfer of magnetic helicity to the flux rope during the reconnection, which would imply the flaring loops have vanishing self-helicity. However, this seems less likely, because, although the flare loops are generally seen as non-twisted structures, they are also observed to be non-potential, since the low-lying loops appearing early in the flare possess more shear than the high-lying loops (Aulanier, Janvier, and Schmieder, 2012).

The reconnection of twisted tubes has been studied in landmark papers by Linton, Dahlburg, and Antiochos (2001), Linton and Antiochos (2002, 2005), Linton and Priest (2003), in which they consider also the extra constraint of energy both numerically and analytically. Straight tubes of a variety of twists and inclinations are brought together by an initial stagnation-point flow and they are allowed to reconnect self-consistently by either bouncing, slingshot, merging or tunnelling reconnection. Although energy is not considered in detail here, we make initial comments about energy considerations in Section 3.3 and hope to develop them further in future numerical treatments.

The structure of the paper is as follows. In Section 2 we summarise the basic properties of magnetic helicity that are needed for our analysis. Then in Section 3 we present our simple model for a sheared magnetic arcade in which no flux rope is present initially but is created during the eruption by the reconnection. This is followed in Section 4 by a different model in which the initial arcade contains a flux rope, which erupts and leaves behind a less-sheared arcade. Finally, suggestions for follow-up are given in Section 5.

2. Magnetic Helicity Preliminaries

Magnetic helicity is a topological quantity that comprises two parts: the *self-helicity* measures the twisting and kinking of a flux tube, whereas the *mutual helicity* refers to the linkage between different flux tubes (Berger, 1986, 1999). Their sum, the relative helicity, is a global invariant that is conserved during ideal evolution and that decays extremely slowly (over the global magnetic diffusion time, τ_d) in a weakly resistive medium – *i.e.*, one for which the global magnetic Reynolds number is large ($R_m \gg 1$). Thus, during magnetic reconnection in the solar atmosphere over a timescale $t \ll \tau_d$, the total magnetic helicity is approximately conserved, but it may be converted from one form to another, say, from mutual to self.

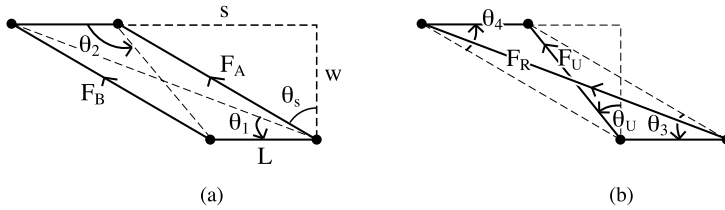


Figure 3 The basic configurations seen from above: (a) two flux tubes of flux F_A and F_B side by side and (b) one flux tube of flux F_R crossing over another underlying tube of flux F_U .

If a magnetic configuration consists of N flux tubes, its total magnetic helicity may be written in terms of the self-helicity (H_s) of each tube due to its own internal twist and the mutual helicity (H_m) due to the linking of the tubes as

$$H = \sum_{i=1}^N H_{si} + 2 \sum_{i < j=1}^N H_{mij}.$$

The basic configurations used in this paper are a single flux rope of magnetic flux F , say, and a pair of flux tubes side by side with fluxes F_A and F_B . The twist $\Phi(F)$ of the flux rope is in general not uniform, but a mean twist $\bar{\Phi}(F)$ may be defined in an appropriate way (see Section 3.2.2). Then the self-helicity of the flux rope is

$$H_s = \frac{\bar{\Phi}}{2\pi} F^2, \tag{1}$$

while the mutual helicity of the two tubes side by side is

$$H_m = \frac{\theta_2 - \theta_1}{2\pi} F_A F_B, \tag{2}$$

where the angles θ_1 and θ_2 depend on the geometry shown in Figure 3(a) (Berger, 1998; Demoulin, Pariat, and Berger, 2006). In contrast, a pair of crossing flux tubes, one of which has flux F_R overlying the other underlying tube of flux F_U , say, possesses mutual helicity

$$H_m = -\frac{\theta_3 + \theta_4}{2\pi} F_R F_U, \tag{3}$$

where the angles θ_3 and θ_4 depend on the geometry of the footpoints in Figure 3(b). In the models that follow, the overlying tube will represent an erupting flux rope, whereas the underlying tube will model an arcade of flare loops, which is why we have used the notations F_R and F_U . Also, for simplicity, the footpoints will form a parallelogram shape and so $\theta_4 = \theta_3$. Note that the sign in Equation (3) is determined by a right-hand rule in the sense that, if the fingers of the right hand are directed along the overlying tube, then the sign is positive if the underlying tube is in the direction of the thumb or, as in the case of Figure 3(b), the sign is negative if the underlying tube is in the opposite direction. Thus, if the direction of flux in either tube is reversed, the helicity is multiplied by -1 . If the tube of flux F_R passes under the other tube rather than over it, then $\theta_3 + \theta_4$ is replaced by $\theta_3 + \theta_4 - 2\pi$.

3. Modelling the Eruption of a Simple Magnetic Arcade with no Flux Rope

Consider a simple sheared arcade (Figure 1(a)), which reconnects and produces an erupting flux rope together with an underlying arcade (Figure 1(b)). Our aim is to deduce the helicity in the flux rope (and so its twist) in terms of the shear and helicity of the initial arcade. In addition, we shall deduce the distribution of twist within the flux rope.

3.1. Overall Process

We first consider the overall process and model the configuration in the simplest way by treating the initial arcade as two untwisted flux tubes side by side. We compare the initial state in Figure 3(a) having two untwisted flux tubes (of equal flux $F_A = F_B = F_a$) side by side with the reconnected state in Figure 3(b) having a twisted erupting flux rope (of mean twist $\bar{\Phi}$, say) overlying flare loops.

The initial configuration possesses mutual helicity (H^i), which may be calculated from Equation (2) as

$$H^i = \frac{\theta_2 - \theta_1}{\pi} F_a^2, \quad (4)$$

where the angles θ_1 and θ_2 can be written in terms of the width (w), length (L) and shear (s) of the arcade as

$$\tan \theta_1 = \frac{w}{L+s} = \frac{1}{\bar{L} + \bar{s}}, \quad \tan \theta_2 = \frac{w}{L-s} = \frac{1}{\bar{L} - \bar{s}}, \quad (5)$$

with dimensionless length and shear being defined as

$$\bar{L} = \frac{L}{w} \quad \text{and} \quad \bar{s} = \frac{s}{w}.$$

As the shear \bar{s} increases from zero to infinity, θ_1 decreases from $\pi/4$ (when $\bar{L} = 1$) to zero, while θ_2 increases from $\pi/4$ to π .

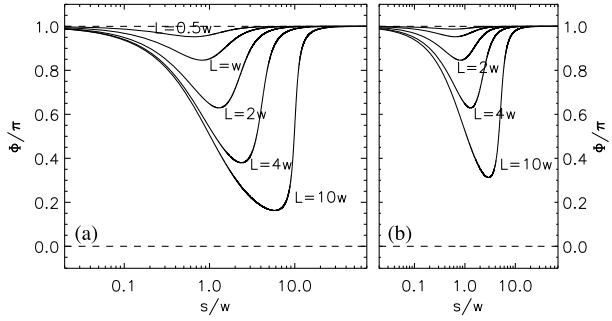
During the reconnection process we assume *flux conservation*, so that the total final flux ($F_R + F_U$) equals the total initial flux ($2F_a$). We also assume that reconnection feeds flux simultaneously and equally into the rope and underlying loops, so that $F_R = F_U$. The net result is that in the reconnected configuration (Figure 3(b)) the fluxes of the erupting flux rope and underlying loops are both equal to half the initial total flux ($F_R = F_U = F_a$). We also assume *helicity equipartition*, so that the released mutual helicity is added equally to the erupting flux rope and underlying loops. Then the magnetic helicity in the reconnected state, namely, the sum of the self-helicities and mutual helicity of the flux rope and the underlying sheared loops, may be written for simplicity (assuming $\theta_4 = \theta_3$) as

$$H^r = \frac{\bar{\Phi}}{\pi} F_a^2 - \frac{2\theta_3}{\pi} F_a^2, \quad (6)$$

where

$$\tan \theta_3 = \frac{1}{\bar{s}},$$

Figure 4 The mean twist ($\bar{\Phi}$) of the erupting flux rope as a function of dimensionless shear $\bar{s} = s/w$ for several values of the dimensionless arcade length $\bar{L} = L/w$ in terms of the arcade width (w) for (a) the simple overall model and (b) for the evolutionary model (Section 3.2) when a fraction $F/F_a = \frac{1}{2}$ of the initial flux F_a has reconnected.



while the self-helicity of the underlying sheared loops is written for simplicity in the same form as that of a twisted structure, namely,

$$H_{sU} = \frac{\bar{\Phi}}{2\pi} F_a^2.$$

As the shear \bar{s} increases from zero to infinity, θ_3 decreases from $\frac{1}{2}\pi$ to zero.

Then magnetic helicity conservation (equating H^i from Equation (4) with H^r from Equation (6)) determines the mean flux-rope twist as

$$\bar{\Phi} = \theta_2 - \theta_1 + 2\theta_3, \tag{7}$$

or, after substituting for the angles and manipulating,

$$\tan \bar{\Phi} = -\frac{2\bar{s}\bar{L}^2}{(1 + \bar{s}^2)^2 - (\bar{s}^2 - 1)\bar{L}^2}. \tag{8}$$

If instead the released mutual helicity is added preferentially to the flux rope, then this value of $\bar{\Phi}$ is doubled.

The way in which the twist varies with shear (\bar{s}) and arcade length (\bar{L}) is shown in Figure 4(a). Thus, for example, when $s \ll L = w$, then $\theta_1 \approx \theta_2 = \pi/4$ and $\theta_3 = \pi/2$ and so $\bar{\Phi} = \pi$, whereas, when $s = w \ll L$, then $\theta_1 \approx \theta_2 \approx \pi/8$ and $\theta_3 = \pi/4$ and so $\bar{\Phi} \approx \frac{1}{2}\pi$. On the other hand, when $s \gg w = L$, then $\theta_1 \approx \theta_3 \approx 0$ and $\theta_2 \approx \pi$ and so $\bar{\Phi} \approx \pi$.

Note that the initial mutual helicity (Equation (4)) is positive, since $\theta_2 > \theta_1$, whereas the final mutual helicity (the second term in Equation (6)) is negative. Thus, equating the initial and final helicities to give Equation (7) implies that the self-helicity of the flux rope must be positive and so the twist has to be positive as indicated in Figures 1 and 5(c) (see also Figures 2 and 9(a)). In other words, the effect of the reconnection is to decrease the mutual helicity and increase the self-helicity.

The shear angles of the initial arcade (θ_s) and of the underlying flare loops (θ_U) are given by

$$\tan \theta_s = \frac{s}{w} \quad \tan \theta_U = \frac{s - L}{w},$$

so that the flare loop shear is smaller than the initial loop shear (Figure 3). If this were applied to a sequence of reconnecting arcade loops that are progressively further and further apart, it can be seen that the flare loop shear angle θ_U decreases as w increases.

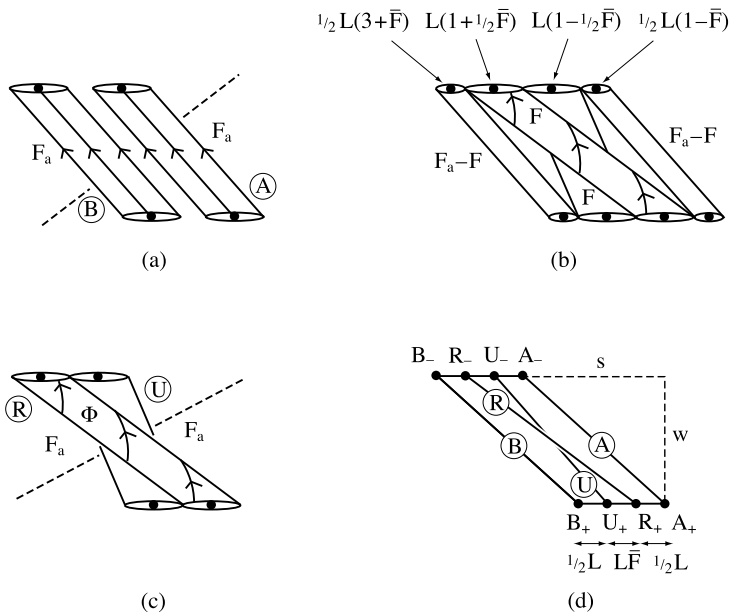


Figure 5 The notation for our model of two untwisted flux tubes (A and B, both of flux F_a) side by side that produce an erupting flux rope (R) of flux F and twist $\bar{\Phi}$ together with an underlying arcade of loops (U) of flux F . (a) shows the initial state, (b) an intermediate reconnected state, (c) the final reconnected state and (d) the notation of the geometry.

3.2. Evolution of the Process

3.2.1. Using Helicity Conservation to Deduce the Mean Flux Rope Twist

Next, we consider the evolution of the process by again supposing the initial configuration consists of two untwisted flux tubes stretching from fixed photospheric flux sources to sinks (Figure 5(a)). The reconnected state again consists of an erupting twisted flux rope (R) and underlying arcade of loops (U) (Figure 5(c)).

During reconnection, in going from Figure 5(a) to Figure 5(c) via intermediate states of the form Figure 5(b), we assume *conservation of magnetic flux*, so that, if the new flux rope (R) joining A_+ to B_- gains flux F , then so does the underlying arcade (U) joining B_+ to A_- , while both flux tubes (A) and (B) of flux F_a lose flux F so that their fluxes both become $F_a - F$. We suppose the footpoints form a parallelogram, so that $\theta_3 = \theta_4$. Initially, the arcade is modelled as consisting of two flux tubes (A and B) side by side, the centres of whose footpoints are indicated by large dots separated by a distance L (Figure 5(a)). During the course of the reconnection (Figure 5(b)), when a fraction $\bar{F} = F/F_a$ of the flux has been reconnected, there is an overlying flux rope (R) of flux F , the centres of whose footpoints are located at R_+ and R_- , together with a underlying flux loop (U) with footpoints at U_+ and U_- (Figure 5(d)). Also, the remaining unreconnected flux consists of two flux tubes (A and B) whose footpoints are located at A_+ , A_- and B_+ , B_- , respectively (Figure 5(d)). The centres of the upper ends of the four flux tubes are located at distances $\frac{1}{2}L(1 - \bar{F})$, $L(1 - \frac{1}{2}\bar{F})$, $L(1 + \frac{1}{2}\bar{F})$ and $\frac{1}{2}L(3 + \bar{F})$, respectively, from the right-hand end of the arcade (Figure 5(c)), and so they are separated by distances $\frac{1}{2}L$, $L\bar{F}$ and $\frac{1}{2}L$, as shown in Figure 5(d). The edges

of the upper ends of the tubes are located at distances $L(1 - \bar{F})$, L , $L(1 + \bar{F})$ and $2L$ from the right-hand end of the arcade.

The second assumption is *magnetic helicity conservation*, so that the total magnetic helicity (*i.e.*, the sum of self and mutual helicity) is conserved during the reconnection process, namely,

$$H_{ARUB}^i = H_{ARUB}^r,$$

where H_{ARUB}^i and H_{ARUB}^r are the initial and reconnected helicities when a fraction \bar{F} of flux has been reconnected, which are calculated below. Initially, we assume two untwisted flux tubes side by side (or equivalently four untwisted flux tubes A, R, U and B), which possess mutual helicity (given by sums of terms of the form Equation (2)) but no self-helicity. During and after reconnection, the flux rope (R) and underlying loops (U) possess self-helicity (H_{SR} and H_{SU}), but also there are mutual helicities (H_{AB} , H_{AR} , H_{AU}) between loop A and loops R and U, (H_{BR} , H_{BU}) between loop B and loops R and U, and (H_{RU}) between R and U, so that the magnetic helicity after reconnection has the form

$$H_{ARUB}^r = H_{SR} + H_{SU} + 2H_{AB} + 2H_{AR} + 2H_{AU} + 2H_{BR} + 2H_{BU} + 2H_{RU}. \tag{9}$$

The initial helicity is given by assuming the initial situation consists of four flux tubes of fluxes $F_a - F$, F , F and $F_a - F$ aligned parallel to one another and stretching between A_+ and A_- , R_+ and U_- , U_+ and R_- , B_+ and B_- in Figure 5(d). Thus, it consists of the sums of the mutual helicities of these tubes, namely,

$$H_{ARUB}^i = 2H_{AB}^i + 2H_{AR}^i + 2H_{AU}^i + 2H_{BR}^i + 2H_{BU}^i + 2H_{RU}^i. \tag{10}$$

The third assumption is *magnetic helicity equipartition*, so that the effect of reconnection of A and B is to give self-helicity equally to the flux rope (R) and underlying loops (U), *i.e.*,

$$H_{SU} = H_{SR} = \frac{\bar{\Phi}}{2\pi} F^2. \tag{11}$$

The expressions for the mutual helicities are given in the [Appendix](#). By substituting them into the expressions for initial and post-reconnection helicity, helicity conservation determines the flux rope self-helicity (and therefore its mean twist, $\bar{\Phi}$). It transpires that, although all of the mutual helicities change during the course of the reconnection, the sums $H_{AR} + H_{AU}$ and $H_{BR} + H_{BU}$ remain the same. In other words, the unreconnected parts of flux tubes A and B are spectators, since they have not taken part in the reconnection, and we just need to take account of the other parts and the way they reconnect to give flux tubes R and U in Figure 5(d). But this process is exactly what we have already considered in Section 3.1 with one difference, namely, that the length \bar{L} is replaced by $\bar{L}\bar{F}$ and the angles θ_1 and θ_2 are replaced by θ_1^{RU} and θ_2^{RU} , respectively.

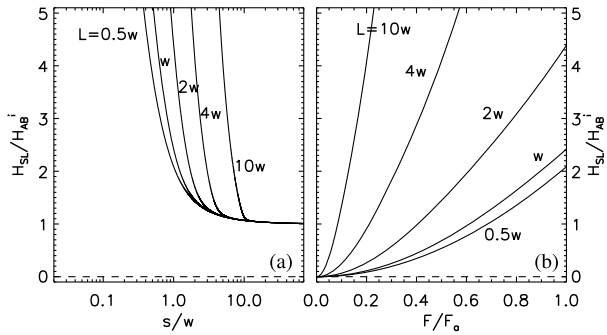
By using Equations (5), (7) and (8), the resulting mean twist therefore becomes (see the [Appendix](#))

$$\bar{\Phi} = \theta_2^{RU} - \theta_1^{RU} + 2\theta_3, \tag{12}$$

where

$$\tan \theta_1^{RU} = \frac{1}{\bar{L}\bar{F} - \bar{s}}, \quad \tan \theta_2^{RU} = \frac{1}{\bar{L}\bar{F} + \bar{s}}, \quad \tan \theta_3 = \frac{1}{\bar{s}}. \tag{13}$$

Figure 6 The magnetic helicity of the underlying arcade of loops (a) as a function of shear (s) when the reconnection is complete and (b) as a function of reconnected flux for several arcade geometries when $s = w$.



After manipulating this gives

$$\tan \bar{\Phi} = - \frac{2\bar{s}\bar{L}^2\bar{F}^2}{(1 + \bar{s}^2)^2 - (\bar{s}^2 - 1)\bar{L}^2\bar{F}^2}. \tag{14}$$

The mean twist is plotted in Figure 4(b). When $\bar{F} \ll 1$ this reduces to

$$\bar{\Phi} = - \frac{2\bar{s}\bar{L}^2\bar{F}^2}{(1 + \bar{s}^2)^2},$$

whose magnitude increases with \bar{s} from zero to a maximum of $12\sqrt{3}\bar{L}^2\bar{F}^2/16$ at $\bar{s} = 1/\sqrt{3}$ (corresponding to a shear angle of $\pi/3$) and then declines to zero.

For complete reconnection, the flux tube has eaten its way right through the overlying arcade and so $\bar{F} = 1$ ($F = F_a$). The resulting final mean flux rope twist ($\bar{\Phi}_f$) is given by

$$\tan \bar{\Phi}_f = - \frac{2\bar{s}\bar{L}^2}{(1 + \bar{s}^2)^2 - (\bar{s}^2 - 1)\bar{L}^2}, \tag{15}$$

which is the same as Equation (8) and is plotted as a function of shear for various arcade aspect ratios in Figure 4(a).

Another quantity of interest is the magnetic helicity of the underlying flare loops [$H_{SU} = \bar{\Phi}F^2/(2\pi)$] as a fraction of the initial helicity [$H_{AB}^i = (\theta_2^i - \theta_1^i)F_a^2/(2\pi)$] given by Equation (4). After using Equation (12) for $\bar{\Phi}$, this may be written

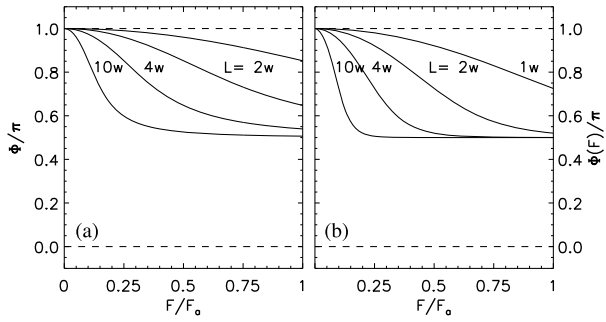
$$\frac{H_{SU}}{H_{AB}^i} = \frac{(\theta_2^{RU} - \theta_1^{RU} + 2\theta_3)\bar{F}^2}{(\theta_2 - \theta_1)},$$

which is plotted in Figure 6(a) as a function of reconnected flux (F) for a unit shear ($s = w$) and several arcade aspect ratios (L/w), showing how the arcade helicity increases with reconnected flux. An alternative to assuming helicity equipartition would be to suppose the self-helicity is transferred preferentially to the flux rope, so that the self-helicity (H_{SU}) of the underlying loops vanishes. The effect of this would be to double the value of the flux rope twist.

3.2.2. Deducing the Distribution of Twist Within the Flux Rope

Using the dependence of mean twist ($\bar{\Phi}$) of a flux rope on flux (F) it is possible to deduce the dependence of the twist itself (Φ) on flux. The mean twist is defined in such a way that

Figure 7 (a) The mean flux rope twist ($\bar{\Phi}$) as a function of reconnected flux ($\bar{F} = F/F_a$) and (b) flux rope twist as a function of flux (\bar{F}) for a shear value $s/w = 1$ and several values of the ratio (L/w) of arcade length to width.



the self-helicity of the flux rope satisfies Equation (1), namely,

$$H_s = \frac{\bar{\Phi}}{2\pi} F^2.$$

Suppose the rope consists of a set of nested flux surfaces and F is the axial flux within a particular flux surface. If the twist is not uniform but varies with flux or with distance from the rope axis, the self-helicity of the flux rope may be written (Berger, 1998)

$$H_s = \frac{1}{\pi} \int_0^F \Phi(F) F dF,$$

which reduces to $H_s = \Phi F^2/(2\pi)$ for a uniform twist. Equating these two expressions for H_s , we find

$$\bar{\Phi} = \frac{2}{F^2} \int \Phi(F) F dF, \tag{16}$$

which gives the definition of average twist. It may be inverted to give the twist as a function of flux in terms of the mean twist, namely,

$$\Phi(F) = \frac{1}{2F} \frac{d}{dF} (F^2 \bar{\Phi}).$$

In terms of \bar{F} , this becomes

$$\Phi(\bar{F}) = \frac{1}{2\bar{F}} \frac{d}{d\bar{F}} (\bar{F}^2 \bar{\Phi}) = \bar{\Phi} + \bar{F}^2 \frac{d\bar{\Phi}}{d\bar{F}^2}. \tag{17}$$

By assuming that the average twist and enclosed axial flux obey Equation (14) at every flux surface within the flux rope, we may substitute for $\Phi(\bar{F})$ from Equation (14) and deduce the distribution of twist within the erupting flux rope as

$$\begin{aligned} \Phi(\bar{F}) = \tan^{-1} & \left[-\frac{2\bar{s}\bar{L}^2\bar{F}^2}{(1+\bar{s}^2)^2 - (\bar{s}^2-1)\bar{L}^2\bar{F}^2} \right] \\ & - \frac{2\bar{s}\bar{L}^2\bar{F}^2}{(1+\bar{s}^2)^2 - 2(\bar{s}^2-1)\bar{L}^2\bar{F}^2 + \bar{L}^4\bar{F}^4}, \end{aligned} \tag{18}$$

which is plotted in Figure 7(b). From Figure 7(a) we can see that the mean twist ($\bar{\Phi}$) decreases with reconnected flux \bar{F} from π to a value at $\bar{F} = 1$ that lies between π and $\frac{1}{2}\pi$, and

that this fully reconnected value decreases with increasing arcade length \bar{L} . Equation (17) and Figure 7(b) show that the twist itself (Φ) also starts from π at $\bar{F} = 0$ and lies between π and $\frac{1}{2}\pi$. Furthermore, since $d\Phi/d\bar{F}^2 < 0$, Φ is smaller than $\bar{\Phi}$ and is roughly constant over most of the flux rope cross-section, especially when $\bar{L} > 4$.

3.3. Energy Considerations

If the initial state is driven to reconnect by footpoint motions, then there is no need for the initial magnetic energy to exceed the final energy, since any change in energy could come from the work done by the footpoints. If, however, the reconnection arises from some kind of instability, then an extra constraint, which we have not considered so far, arises from the condition that the magnetic energy of the initial state must exceed that of the final state. This will then rule in some of the changes we have considered and rule out others. We do not here give a definitive answer to which changes are allowed, but only undertake a preliminary investigation. In Section 3.3.1 we first consider a general expression for the free energy and demonstrate that there is indeed energy release during reconnection to start with, which implies that the magnetic helicity transfers we have been considering so far provide an upper limit on what will happen in reality. Then in Section 3.3.2 we describe a simple model for calculating the free energy and again demonstrate that in some cases the free energy is indeed positive. In future, we look to a full numerical solution to provide a more in-depth account of the constraints produced by energy considerations.

Two minor points are worth making first. It may naturally be thought that two parallel untwisted tubes side by side (with flux going from footpoints A_+ and B_+ to A_- and B_- , respectively) will not reconnect. This is indeed true if the initial state is potential and the footpoints form a rectangle, with reflectional symmetry, since the initial field is in a state of minimum possible energy (*e.g.*, Longcope, 1996). In our case, however, the footpoints form a non-rectangular parallelogram lacking this symmetry and the initial state is force-free (Figure 3(a)), so there exists a lower-energy (potential) state with the same footpoints but with flux going from A_+ to B_- as well as to B_+ ; some reconnection is therefore likely to occur. However, the minimum-energy state that has given footpoint fluxes and given total magnetic helicity is not the potential state but a piecewise linear force-free field (*e.g.*, Longcope and Malanushenko, 2008). So, provided the initial state is a nonlinear force-free field, there will certainly exist a lower-energy state with the latter connections that preserves magnetic helicity.

The second minor point is that, since the initial states are untwisted and the final states are twisted, it may be thought at first that the final state must have a higher energy than the initial state. But that conclusion is valid only for tubes of a given constant cross-sectional radius, and it will not necessarily hold for tubes that are allowed to expand as they arch up from their footpoints.

3.3.1. General Aspects

The free magnetic energy (*i.e.*, the energy above potential) can be written as a sum over terms involving the total currents, I_i , flowing along their paths (Jackson, 1999, §5.17),

$$\Delta W = W - W_0 = \frac{1}{2\mu} \int |\mathbf{B} - \mathbf{B}_0|^2 d^3x = \frac{1}{2} \sum_i L_i I_i^2 + \frac{1}{2} \sum_i \sum_{j \neq i} M_{ij} I_i I_j,$$

where the coefficients L_i and M_{ij} depend on the current paths and the distribution of current therein. Non-negativity of this energy requires that $L_i \geq 0$, for each current system i , and that $|M_{ij}| \leq \sqrt{L_i L_j}$ for all pairs i and j .

In the initial configuration, shown schematically in Figure 3(a), separating domains F_A from F_B is a single current sheet carrying current I_{cs} . There is, at this time, no current flowing through the domains, which are assumed untwisted. As reconnection proceeds, current does increase in domains F_R and F_U , which were also current-free before reconnection. Changes δI_{cs} , δI_R , and δI_U , to those currents change the free energy by an amount which is, to leading order,

$$\delta(\Delta W) = (L_{cs}\delta I_{cs} + M_{cs,U}\delta I_U + M_{cs,R}\delta I_R)I_{cs}.$$

Reconnection will decrease the current in the sheet, so $\delta I_{cs} I_{cs} < 0$. At the same time the new domains, U and R, are created with twisted flux, and so they have current. It is because the coefficients $M_{cs,R}$ and $M_{cs,U}$ are so much smaller than L_{cs} that the process of reconnection at a current sheet is energetically favourable ($\delta(\Delta W) < 0$). This state of affairs obtains during the initial phase, where contributions from $L_R I_R \delta I_R$ and $L_U I_U \delta I_U$ are negligible. After a significant period of reconnection, however, these contributions, both necessarily positive, will eventually balance the negative contribution from the diminishing current sheet. Reconnection will cease at such a point, with some portion of flux unconnected, and a current sheet remaining. We have not been able to determine this point in our simple model, and so instead have considered the limiting case where reconnection proceeds to completion. This therefore provides an upper bound on helicity transfer.

3.3.2. Simple Model

Consider the two flux tubes in Figure 3(a) stretching from A_+ to A_- and B_+ to B_- , say, and suppose the flux tubes expand into the corona from small sources at these footpoints. A cylindrical tube of uniform twist Φ , length l , radius a and central axial field B_0 , will have an equilibrium field of the Gold–Hoyle form (Priest, 2014). The field components in cylindrical polar coordinates (R, ϕ, z) are

$$B_z = \frac{B_0}{1 + q^2 R^2}, \quad B_\phi = \frac{B_0 q R}{1 + q^2 R^2}, \tag{19}$$

where q is a constant such that the twist is $\Phi = lq$. The net magnetic flux in such a tube is

$$F_0 = \frac{\pi B_0}{q^2} \log(1 + q^2 a^2), \tag{20}$$

while the magnetic energy is

$$W = \frac{l B_0 F_0}{2\mu}. \tag{21}$$

We shall suppose for simplicity that our flux tubes expand rapidly up to form relatively uniform tubes in the corona, for which the flux (F_0) and twist (Φ) are given. If these are held constant, then, as the radius a increases and the tube expands more into the corona, so the central axial field B_0 decreases and the energy W decreases.

For the initial state in Figure 3(a), the length of the coronal part of each uniform untwisted flux tube is roughly $l_T = \sqrt{(s^2 + w^2)}$ and the central axial field is $B_{0T} = F_0/(\pi a_T^2)$,

where the geometry of the situation with its similar triangles implies that the radius of the tube (namely, half the perpendicular distance between the axes of the two tubes) is $a_T = \frac{1}{2}wL/\sqrt{(s^2 + w^2)}$. Thus, the central axial field can be written

$$B_{0T} = \frac{4F_0(w^2 + s^2)}{\pi w^2 L^2}. \tag{22}$$

For the final state in Figure 3(b), we suppose the tubes are twisted, with the value of q and therefore the twist $\Phi = lq$ given by helicity conservation, so that in this case the axis field is given from Equation (20) by the form

$$B_0 = \frac{F_0 q^2}{\pi \log(1 + q^2 a^2)}. \tag{23}$$

For the overlying flux rope the length is given by roughly $l_R = \sqrt{\{(L + s)^2 + w^2\}}$, while the geometry of the configuration implies that the radius of the tube (namely, roughly the perpendicular distance between the tube axis and the footpoint of the underlying tube) has increased to $a_R = Lw/\sqrt{\{(L + s)^2 + w^2\}}$. The central axial field then becomes

$$B_{0R} = \frac{F_0 q_R^2}{\pi \log\{1 + q_R^2 L^2 w^2 / [(L + s)^2 + w^2]\}}. \tag{24}$$

The underlying flux loop has a rough length of $l_U = \sqrt{\{(L - s)^2 + w^2\}}$ and a radius (namely, roughly half the perpendicular distance between the tube axis and the footpoint of the overlying tube) that has increased to $a_U = Lw/\sqrt{\{(L - s)^2 + w^2\}}$, so that its central axial field becomes

$$B_{0U} = \frac{F_0 q_U^2}{\pi \log\{1 + q_U^2 L^2 w^2 / [(L - s)^2 + w^2]\}}. \tag{25}$$

Thus, using Equation (21), the initial energy becomes

$$W_T = \frac{4F_0^2(w^2 + s^2)^{3/2}}{\pi \mu w^2 L^2}, \tag{26}$$

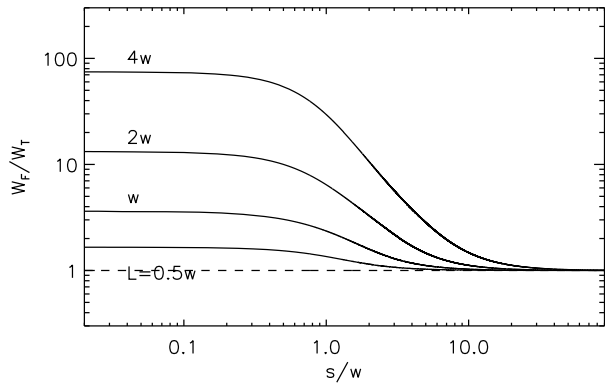
while the final energy is the sum of the energies of the overlying flux rope and underlying loops, namely,

$$\begin{aligned} W_F \equiv W_R + W_U &= \frac{\{(L + s)^2 + w^2\}^{1/2} F_0^2 q_R^2}{2\pi \mu \log\{1 + q_R^2 L^2 w^2 / [(s + L)^2 + w^2]\}} \\ &+ \frac{\{(L - s)^2 + w^2\}^{1/2} F_0^2 q_U^2}{2\pi \mu \log\{1 + q_U^2 L^2 w^2 / [(s - L)^2 + w^2]\}}. \end{aligned} \tag{27}$$

The ratio (W_F/W_T) of final to initial energy is plotted as a function of s/w for varying L/w in Figure 8, which shows that, when s/w is large enough, $W_F/W_T < 1$, so that the initial magnetic energy does indeed exceed the final energy, as required for an accessible state. In particular case when $sL \ll w$ and $qL \ll 1$, the initial and final energies are

$$W_T = \frac{4F_0^2 w}{\pi \mu L^2} \quad \text{and} \quad W_F = \frac{F_0^2 w}{\pi \mu L^2}, \tag{28}$$

Figure 8 The ratio (W_F/W_T) of the final to the initial energy for the loops shown in Figure 3 as a function of s/w for varying L/w , where s is the shear, while w and L are the separations shown in Figure 3 between sources of opposite and like polarity, respectively.



so that $W_F/W_T = 1/4$. In the future we plan to improve upon this energy calculation by considering partial reconnection and also taking account of the current sheet that is likely to be present, but both of those are outside the scope of the present paper.

4. Modelling the Eruption of a Magnetic Arcade Containing a Flux Rope

Consider next a twisted magnetic flux rope of initial twist Φ_{Ri} and flux F_l situated under a coronal arcade of flux $2F_a$, and suppose that it reconnects with the arcade to produce an erupting flux rope whose core is the original flux rope, but which is now enveloped by a sheath of extra flux F_a and twist Φ_R , as sketched in Figure 2. We here develop a simple model to determine Φ_R in terms of the geometry of the initial state.

Suppose the magnetic flux ($F_{13} = F_l$) of the flux rope stretches from a positive source P_1 to a negative source N_3 , while the overlying arcade has two parts of flux $F_{21} = F_a$ and $F_{32} = F_a$ linking positive sources P_2 and P_3 to negative sources N_1 and N_2 , respectively (Figure 9(a)). The arcade sources lie at the vertices of a parallelogram, with angles $\theta_1, \theta_2, \theta_3$ (equal to the angles $N_2P_2P_3, N_2N_1P_3, N_1P_2P_3$, respectively), while the flux-rope source P_1 subtends angles θ_5 and θ_6 , as indicated in Figure 9. After reconnection, the original flux rope still links P_1 and N_3 , while the initial arcade has now reconnected, so that P_2 now joins to N_2 to give flux that winds round (with twist Φ_R) and enhances the original flux rope, while P_3 now joins to N_1 to give an underlying set of loops with self-helicity $\Phi_U F_{31}^2/(2\pi)$, say (Figure 9(b)).

The initial self-helicity of the flux rope is $\Phi_{Ri} F_{13}^2/(2\pi)$ and is preserved as the self-helicity of the core of the erupting flux rope after reconnection. The final self-helicity of the new part P_2N_2 of the erupting flux rope is $\Phi_R F_{22}^2/(2\pi)$, while the final self-helicity of the underlying loops P_3N_1 is $\Phi_U F_{31}^2/(2\pi)$.

The initial mutual helicity has three parts, namely: $[1 - \frac{1}{2}(\theta_6 + \theta_7)/\pi]F_{13}F_{21}$ due to P_1N_3 lying under P_2N_1 , where θ_6 is the angle $N_1P_1P_2$ and θ_7 is the angle $P_2N_3N_1$; $[1 - \frac{1}{2}(\theta_5 + \theta_8)/\pi]F_{13}F_{32}$ due to P_1N_3 lying under P_3N_2 , where θ_5 is the angle $N_2P_1P_3$ and θ_8 is the angle $P_3N_3N_2$; and $[(\theta_2 - \theta_1)/\pi]F_{21}F_{32}$ due to P_3N_2 lying alongside P_2N_1 , where θ_1 is the angle $P_3P_2N_2$ and θ_2 is the angle $P_3N_1N_2$.

After reconnection, the mutual helicity decreases to the sum of three parts, namely: $-\frac{1}{2}(\theta_6 + \theta_7)/\pi]F_{13}F_{31}$ due to the initial flux rope P_1N_3 now lying over the underlying arcade of loops P_3N_1 ; $-\frac{1}{2}(\theta_5 + \theta_8)/\pi]F_{13}F_{22}$ due to the initial flux rope P_1N_3 lying un-

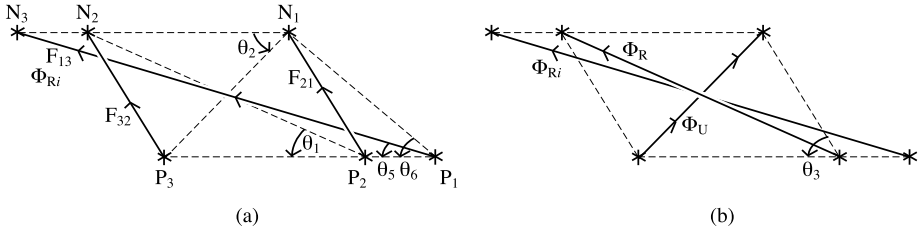


Figure 9 A simple model for the eruption and reconnection of a flux rope (of flux F_{12} and mean twist $\bar{\Phi}_{Ri}$) through an overlying coronal arcade (of flux F_{21}), showing (a) the pre-reconnection and (b) the post-reconnection configuration.

der the new part P_2N_2 of the erupting flux rope; and $-(\theta_3/\pi)F_{31}F_{22}$ due to the underlying arcade of loops P_3N_1 lying under the new part P_2N_2 of the erupting flux rope.

We first assume *magnetic helicity equipartition*, so that the self-helicities added to the underlying arcade and flux rope are equal and the released mutual helicity is shared equally between the two flux tubes, *i.e.*,

$$\frac{\Phi_U}{2\pi} F_{31}^2 = \frac{\Phi_R}{2\pi} F_{22}^2. \tag{29}$$

We also assume *magnetic helicity conservation* so that the initial and final helicities (self plus mutual) are the same, namely

$$\begin{aligned} & \frac{\Phi_{Ri}}{2\pi} F_{13}^2 + \left(1 - \frac{\theta_6 + \theta_7}{2\pi}\right) F_{13}F_{21} + \left(1 - \frac{\theta_5 + \theta_8}{2\pi}\right) F_{13}F_{32} + \frac{\theta_2 - \theta_1}{\pi} F_{21}F_{32} \\ &= \frac{\Phi_{Ri}}{2\pi} F_{13}^2 + \frac{\Phi_R}{2\pi} F_{22}^2 + \frac{\Phi_U}{2\pi} F_{31}^2 - \frac{\theta_6 + \theta_7}{2\pi} F_{13}F_{21} - \frac{\theta_5 + \theta_8}{2\pi} F_{13}F_{32} - \frac{2\theta_3}{\pi} F_{21}F_{32}. \end{aligned}$$

After substituting for Φ_U from Equation (29) and putting $F_{32} = F_{21} = F_{31} = F_{22} = F_a$, $F_{13} = F_I$, this reduces to

$$\Phi_R = 2\pi \frac{F_I}{F_a} + \theta_2 - \theta_1 + 2\theta_3. \tag{30}$$

Thus, by comparison with the case where there is no initial flux rope, the reconnection enhances the new flux rope twist by $2\pi F_I/F_a$.

5. Discussion

We have set up a simple model for estimating the twist in erupting prominences, in association with eruptive two-ribbon flares and/or with coronal mass ejections. It is based on three simple assumptions, namely, conservation of magnetic flux, conservation of magnetic helicity and equipartition of magnetic helicity. While the first and second are well established, the third is more of a reasonable conjecture. In future, it would be interesting to test the model and the conjecture with both observations and computational experiments.

During the main phase of a flare, the shear of the flare loops is observed to decrease in time, so that they become oriented more perpendicular to the polarity inversion line. This is a natural consequence of our model, where flux is added to the flux rope first from the

innermost parts of the arcade (*i.e.*, closest to the polarity inversion line), so that, as can be seen in Figures 1(b), 2(b) and 9(b), the final shear of the arcade is smaller than the initial shear. In other words, the change in shear is a consequence of the geometry of the three-dimensional reconnection process.

The cause of the eruption is a separate topic that has been discussed extensively elsewhere (*e.g.*, Priest, 2014), and it includes either nonequilibrium, kink instability, torus instability or breakout. One puzzle is what happens with confined flares, where the flare loops and H α ribbons form but there is no eruption. A distinct possibility is that the overlying magnetic field and flux are too strong to allow the eruption, but this needs to be tested by comparing nonlinear force-free extrapolations with observations (*e.g.*, Wiegelmann, 2008; Mackay, Green, and van Ballegooijen, 2011; Mackay and Yeates, 2012). Another puzzle is the cause of preflare heating. One possibility is the slow initiation of reconnection before a fast phase (Yuhong Fan, private communication), but another is that the flux rope goes unstable to kink instability which spreads the heating nonlinearly throughout the flux rope in a multitude of secondary current sheets (Hood, Browning, and van der Linden, 2009); if the surrounding field is stable enough, such an instability can possibly occur without an accompanying eruption.

The present simple model can be developed in several ways, which we hope to pursue in the future. One is to conduct computational experiments, in which the energies before and after reconnection will be calculated in order to check which states are energetically accessible. A second way is to extend the model to more realistic initial configurations with more elements, in which the reconfiguration is by quasi-separator or separator reconnection (Priest and Titov, 1996; Longcope, 1996; Longcope *et al.*, 2005; Longcope and Malanushenko, 2008; Parnell, Maclean, and Haynes, 2010) and the internal structure of the flux rope and arcade are taken into account. In particular, the distribution of magnetic flux within the arcade will be included, both normal to and parallel to the polarity inversion line.

Acknowledgements We are grateful to Mitch Berger, Pascal Démoulin, Alan Hood and Clare Parnell for helpful comments and suggestions and to the UK STFC, High Altitude Observatory and Montana State University for financial support.

Disclosure of Potential Conflicts of Interest The authors declare that they have no conflicts of interest.

Open Access This article is distributed under the terms of the Creative Commons Attribution 4.0 International License (<http://creativecommons.org/licenses/by/4.0/>), which permits unrestricted use, distribution, and reproduction in any medium, provided you give appropriate credit to the original author(s) and the source, provide a link to the Creative Commons license, and indicate if changes were made.

Appendix: Details of Magnetic Helicity Conservation

In Equation (9), the mutual helicities may be written using Equation (2) as

$$\begin{aligned} H_{AB} &= \frac{(\theta_2^{AB} - \theta_1^{AB})}{2\pi} (F_a - F)^2, \\ H_{AR} &= \frac{(\theta_2^{AR} - \theta_1^{AR})}{2\pi} (F_a - F)F, \\ H_{AU} &= \frac{(\theta_2^{AU} - \theta_1^{AU})}{2\pi} (F_a - F)F, \end{aligned} \quad (31)$$

$$\begin{aligned}
 H_{BR} &= \frac{(\theta_2^{BR} - \theta_1^{BR})}{2\pi} (F_a - F)F, \\
 H_{BU} &= \frac{(\theta_2^{BU} - \theta_1^{BU})}{2\pi} (F_a - F)F, \\
 H_{RU} &= \frac{-\theta_3}{\pi} F^2,
 \end{aligned}$$

where the angles may be written in terms of the angles between various lines joining the footpoints A_+ , R_+ , U_+ , B_+ , A_- , R_- , U_- and B_- in Figure 5(d), namely, $\theta_1^{AB} = \angle B_+A_+B_-$, $\theta_2^{AB} = \angle B_+A_-B_-$, $\theta_1^{AR} = \angle B_+A_+R_-$, $\theta_2^{AR} = \angle R_+A_-B_-$, $\theta_1^{AU} = \angle B_+A_+U_-$, $\theta_2^{AU} = \angle U_+A_-B_-$, $\theta_1^{BR} = \angle B_+R_+B_- = \theta_1^{AR}$, $\theta_2^{BR} = \angle B_+R_-B_- = \theta_2^{AR}$, $\theta_1^{BU} = \angle B_+U_+B_- = \theta_1^{AU}$, $\theta_2^{BU} = \angle B_+U_-B_- = \theta_2^{AU}$ and $\theta_3 = \angle B_+A_+A_-$.

In a similar way to Equation (5) for θ_1 and θ_2 , these angles may also be written in terms of \bar{F} and the geometrical parameters \bar{L} and \bar{s} as

$$\begin{aligned}
 \tan \theta_1^{AB} &= \frac{w}{L + L\bar{F} + s} = \frac{1}{\bar{L} + \bar{L}\bar{F} + \bar{s}}, \\
 \tan \theta_2^{AB} &= \frac{w}{L + L\bar{F} - s} = \frac{1}{\bar{L} + \bar{L}\bar{F} - \bar{s}}, \\
 \tan \theta_1^{AR} &= \frac{w}{s + (\frac{1}{2} + \bar{F})L} = \frac{1}{\bar{s} + (\frac{1}{2} + \bar{F})\bar{L}}, \\
 \tan \theta_2^{AR} &= \frac{w}{\frac{1}{2}L - s} = \frac{1}{\frac{1}{2}\bar{L} - \bar{s}}, \\
 \tan \theta_1^{AU} &= \frac{w}{\frac{1}{2}L + s} = \frac{1}{\frac{1}{2}\bar{L} + \bar{s}}, \\
 \tan \theta_2^{AU} &= \frac{w}{-s + (\frac{1}{2} + \bar{F})L} = \frac{1}{-\bar{s} + (\frac{1}{2} + \bar{F})\bar{L}}, \\
 \tan \theta_3 &= \frac{w}{s} = \frac{1}{\bar{s}}.
 \end{aligned} \tag{32}$$

In Equation (10) for the initial helicity, the mutual helicities are

$$\begin{aligned}
 H_{AB}^i &= \frac{(\theta_2^{AB} - \theta_1^{AB})}{2\pi} (F_a - F)^2, \\
 H_{AR}^i &= \frac{(\theta_2^{AR} - \theta_1^{AR})}{2\pi} (F_a - F)F, \\
 H_{AU}^i &= \frac{(\theta_2^{AU} - \theta_1^{AR})}{2\pi} (F_a - F)F, \\
 H_{BR}^i &= \frac{(\theta_2^{BU} - \theta_1^{BR})}{2\pi} (F_a - F)F, \\
 H_{BU}^i &= \frac{(\theta_2^{BR} - \theta_1^{BU})}{2\pi} (F_a - F)F, \\
 H_{RU}^i &= \frac{(\theta_2^{RU} - \theta_1^{RU})}{2\pi} F^2.
 \end{aligned} \tag{33}$$

Thus, we note that, although all of the mutual helicities change during the course of the reconnection, the sums $H_{AR} + H_{AU}$ and $H_{BR} + H_{BU}$ remain the same.

By substituting these into the expressions for initial and final helicity (Equations (9) and (10)), helicity conservation gives the mean flux-rope twist in Equation (12), as required.

References

- Antiochos, S.K., DeVore, C.R., Klimchuk, J.A.: 1999, *Astrophys. J.* **510**, 485. DOI.
- Asai, A., Yokoyama, T., Shimojo, M., Shibata, K.: 2004, *Astrophys. J. Lett.* **605**, L77. DOI.
- Aulanier, G.: 2014, In: Schmieder, B., Malherbe, J.-M., Wu, S.T. (eds.) *IAU Symposium, IAU Symposium* **300**, 184. DOI.
- Aulanier, G., Janvier, M., Schmieder, B.: 2012, *Astron. Astrophys.* **543**, A110. DOI.
- Aulanier, G., Török, T., Démoulin, P., DeLuca, E.E.: 2010, *Astrophys. J.* **708**, 314. DOI.
- Berger, M.A.: 1986, *Geophys. Astrophys. Fluid Dyn.* **34**, 265.
- Berger, M.A.: 1998, In: Webb, D.F., Schmieder, B., Rust, D.M. (eds.) *IAU Colloq. 167: New Perspectives on Solar Prominences, Astronomical Society of the Pacific Conference Series* **150**, 102.
- Berger, M.A.: 1999, In: Brown, M.R., Canfield, R.C., Pevtsov, A.A. (eds.) *Magnetic Helicity in Space and Laboratory Plasmas*, I. Washington, DC. DOI.
- Berger, M.A., Field, G.: 1984, *J. Fluid Mech.* **147**, 133. DOI.
- Berger, M.A., Ruzmaikin, A.: 2000, *J. Geophys. Res.* **105**, 10481. DOI.
- Canfield, R.C., Pevtsov, A.A.: 1998, In: Balasubramaniam, K.S., Harvey, J.W., Rabin, M. (eds.) *Synoptic Solar Physics, A.S.P. Conf. Series* **140**, ASP, San Francisco, 131.
- Canfield, R.C., Hudson, H.S., McKenzie, D.E.: 1999, *Geophys. Res. Lett.* **26**, 627. DOI.
- Canfield, R.C., Hudson, H.S., Pevtsov, A.A.: 2000, *IEEE Trans. Plasma Sci.* **28**, 1786. DOI.
- Chae, J.: 2001, *Astrophys. J.* **560**, L95. DOI.
- Démoulin, P., Priest, E.R.: 1988, *Astron. Astrophys.* **206**, 336.
- Démoulin, P., Aulanier, G.: 2010, *Astrophys. J.* **718**, 1388. DOI.
- Démoulin, P., Mandrini, C.H., van Driel-Gesztelyi, L., Thompson, B.J., Plunkett, S., Kővári, Z., Aulanier, G., Young, A.: 2002, *Astron. Astrophys.* **382**, 650. DOI.
- Démoulin, P., Pariat, E., Berger, M.A.: 2006, *Solar Phys.* **233**, 3. DOI.
- DeVore, C.R., Antiochos, S.K.: 2008, *Astrophys. J.* **680**, 740. DOI.
- Forbes, T.G., Isenberg, P.: 1991, *Astrophys. J.* **373**, 294. DOI.
- Gibb, G.P.S., Mackay, D.H., Green, L.M., Meyer, K.A.: 2014, *Astrophys. J.* **782**, 71. DOI.
- Green, L.M., López Fuentes, M.C., Mandrini, C.H., Démoulin, P., Van Driel-Gesztelyi, L., Culhane, J.L.: 2002, *Solar Phys.* **208**, 43. DOI.
- Gulisano, A.M., Dasso, S., Mandrini, C.H., Démoulin, P.: 2005, *J. Atmos. Solar-Terr. Phys.* **67**, 1761. DOI.
- Heyvaerts, J., Priest, E.R.: 1984, *Astron. Astrophys.* **137**, 63.
- Hood, A.W., Browning, P.K., van der Linden, R.: 2009, *Astron. Astrophys.* **506**, 913. DOI.
- Hood, A.W., Priest, E.R.: 1979, *Solar Phys.* **64**, 303. DOI.
- Hu, Q., Qiu, J., Dasgupta, B., Khare, A., Webb, G.M.: 2014, *Astrophys. J.* **793**, 53. DOI.
- Hu, Q., Qiu, J., Krucker, S.: 2015, *J. Geophys. Res.* **120**, 5266. DOI.
- Jackson, J.: 1999, *Classical Electrodynamics*, 3rd edn. Wiley, Hoboken.
- Janvier, M., Aulanier, G., Démoulin, P.: 2015, *Solar Phys.*, 1. DOI.
- Kliem, B., Török, T.: 2006, *Phys. Rev. Lett.* **96**, 255002. DOI.
- Kusano, K., Maeshiro, T., Yokoyama, T., Sakurai, T.: 2002, *Astrophys. J.* **577**, 501. DOI.
- Lin, J., Forbes, T.G.: 2000, *J. Geophys. Res.* **105**, 2375. DOI.
- Lin, J., Forbes, T.G., Isenberg, P.A., Démoulin, P.: 1998, *Astrophys. J.* **504**, 1006. DOI.
- Linton, M.G., Antiochos, S.K.: 2002, *Astrophys. J.* **581**, 703. DOI.
- Linton, M.G., Antiochos, S.K.: 2005, *Astrophys. J.* **625**, 506. DOI.
- Linton, M.G., Dahlburg, R.B., Antiochos, S.K.: 2001, *Astrophys. J.* **553**, 905. DOI.
- Linton, M.G., Priest, E.R.: 2003, *Astrophys. J.* **595**, 1259. DOI.
- Longcope, D.W.: 1996, *Solar Phys.* **169**, 91. DOI.
- Longcope, D.W., Malanushenko, A.: 2008, *Astrophys. J.* **674**, 1130. DOI.
- Longcope, D.W., McKenzie, D., Cirtain, J., Scott, J.: 2005, *Astrophys. J.* **630**, 596. DOI.
- Low, B.C., Berger, M.A.: 2003, *Astrophys. J.* **589**, 644. DOI.
- Luoni, M.L., Mandrini, C.H., Dasso, S., van Driel-Gesztelyi, L., Démoulin, P.: 2005, *J. Atmos. Solar-Terr. Phys.* **67**, 1734. DOI.
- Mackay, D., Yeates, A.: 2012, *Living Rev. Solar Phys.* **9**, 6. DOI.

- Mackay, D.H., DeVore, C.R., Antiochos, S.K.: 2014, *Astrophys. J.* **784**, 164. DOI.
- Mackay, D.H., Green, L.M., van Ballegoijen, A.A.: 2011, *Astrophys. J.* **729**, 97. DOI.
- Mandrini, C.H., Démoulin, P., van Driel-Gesztelyi, L., López Fuentes, M.C.: 2004, *Astrophys. Space Sci.* **290**, 319. DOI.
- Moffatt, H.K.: 1978, *Magnetic Field Generation in Electrically Conducting Fluids*, Cambridge University Press, Cambridge.
- Nindos, A., Zhang, J., Zhang, H.: 2003, *Astrophys. J.* **594**, 1033. DOI.
- Pariat, E., Nindos, A., Démoulin, P., Berger, M.A.: 2006, *Astron. Astrophys.* **452**, 623. DOI.
- Parnell, C.E., Maclean, R.C., Haynes, A.L.: 2010, *Astrophys. J. Lett.* **725**, L214. DOI.
- Pevtsov, A.A.: 2002, *Solar Phys.* **207**, 111. DOI.
- Pevtsov, A.A., Canfield, R.C., Metcalf, T.R.: 1995, *Astrophys. J.* **440**, L109. DOI.
- Pevtsov, A.A., Latushko, S.M.: 2000, *Astrophys. J.* **528**, 999. DOI.
- Poisson, M., Mandrini, C.H., Démoulin, P., López Fuentes, M.: 2015, *Solar Phys.* **290**, 727. DOI.
- Priest, E.R.: 2014, *Magnetohydrodynamics of the Sun*, Cambridge University Press, Cambridge.
- Priest, E.R., Forbes, T.G.: 1990, *Solar Phys.* **126**, 319. DOI.
- Priest, E.R., Titov, V.S.: 1996, *Phil. Trans. Roy. Soc. London* **355**, 2951.
- Qiu, J., Hu, Q., Howard, T.A., Yurchyshyn, V.B.: 2007, *Astrophys. J.* **659**, 758. DOI.
- Rust, D.M., Kumar, A.: 1994, *Solar Phys.* **155**, 69. DOI.
- Schmieder, B., Aulanier, G.: 2012, *Adv. Space Res.* **49**, 1598. DOI.
- Taylor, J.B.: 1974, *Phys. Rev. Lett.* **33**, 1139. DOI.
- Wang, H., Shen, C., Lin, J.: 2009, *Astrophys. J.* **700**, 1716. DOI.
- Warren, H.P., O'Brien, C.M., Sheeley, N.R. Jr.: 2011, *Astrophys. J.* **742**, 92. DOI.
- Wiegelmann, T.: 2008, *J. Geophys. Res.* **113**, A03S02. DOI.
- Woltjer, L.: 1958, *Proc. Natl. Acad. Sci. USA* **44**, 489. DOI.
- Wright, A.N., Berger, M.A.: 1989, *J. Geophys. Res.* **94**, 1295. DOI.
- Zhang, M., Flyer, N.: 2008, *Astrophys. J.* **683**, 1160. DOI.
- Zhang, M., Flyer, N., Low, B.C.: 2006, *Astrophys. J.* **644**, 575. DOI.